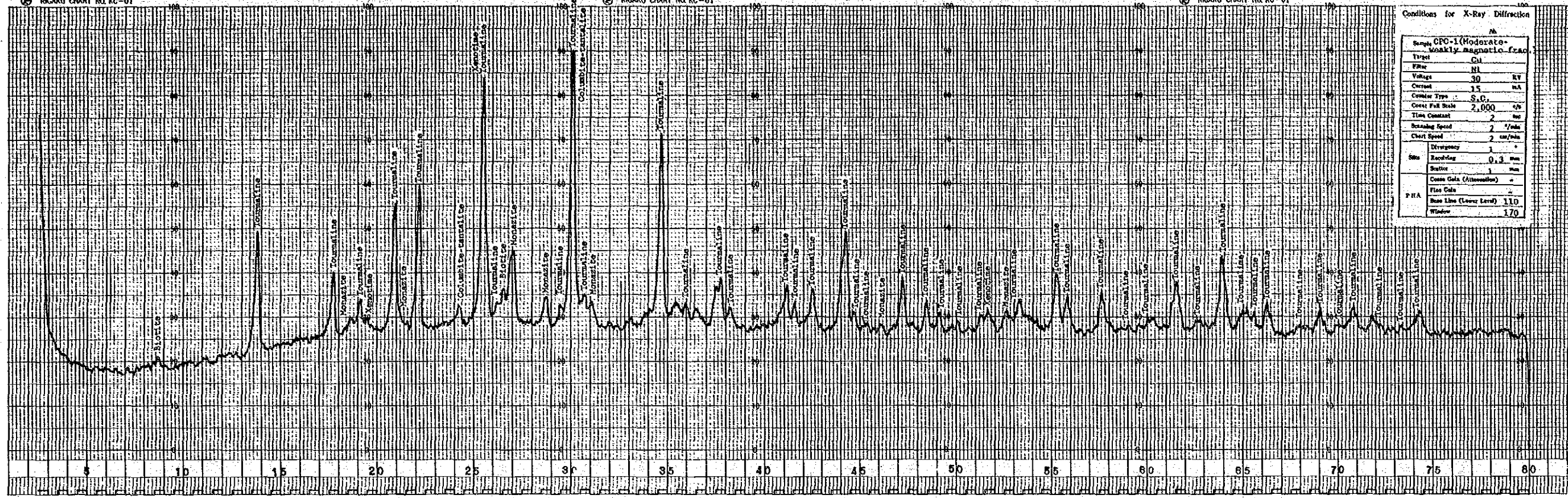


Conditions for X-Ray Diffraction

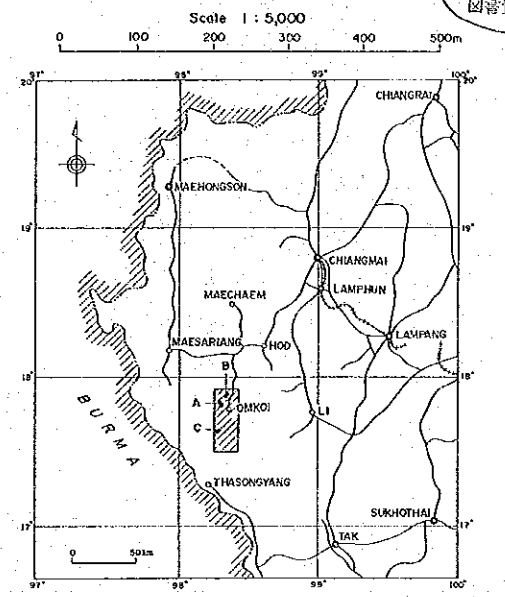
Sample	CPC-1 (Moderate-weakly magnetic phase)
Type	CU
Voltage	30 KV
Current	15 mA
Counter Type	S.G.
Coaxial Full Scale	2,000 c/s
Time Constant	2 sec
Scanning Speed	2 °/min
Chart Speed	2 cm/min
Slit	3 mm
Scatterer	0.3 mm
Crack Gals (Attenuator)	+
Fluor Gals	-
Base Line (Lower Level)	110
Window	170



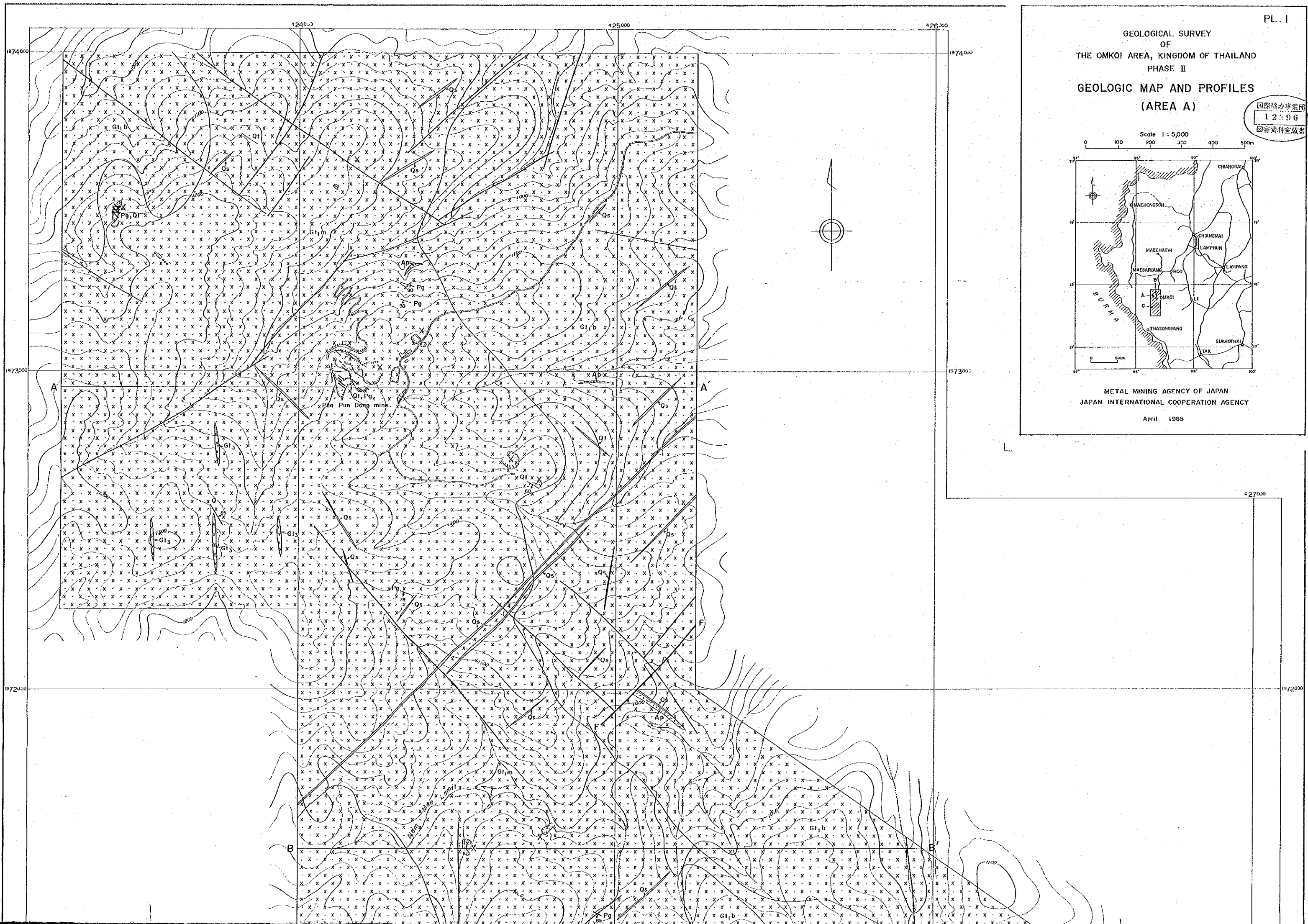


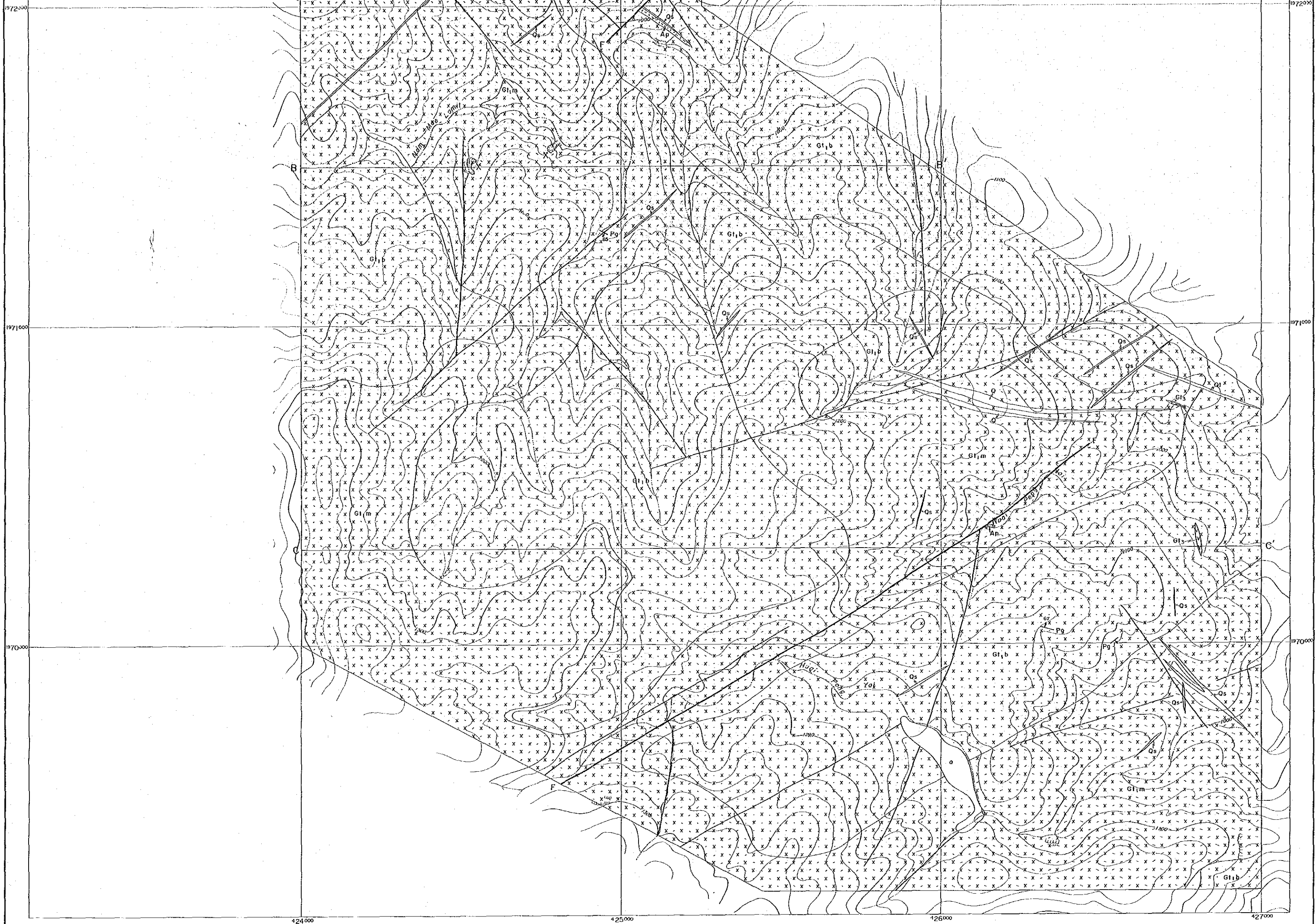
GEOLOGICAL SURVEY OF THE OMKOI AREA, KINGDOM OF THAILAND PHASE II GEOLOGIC MAP AND PROFILES (AREA A)

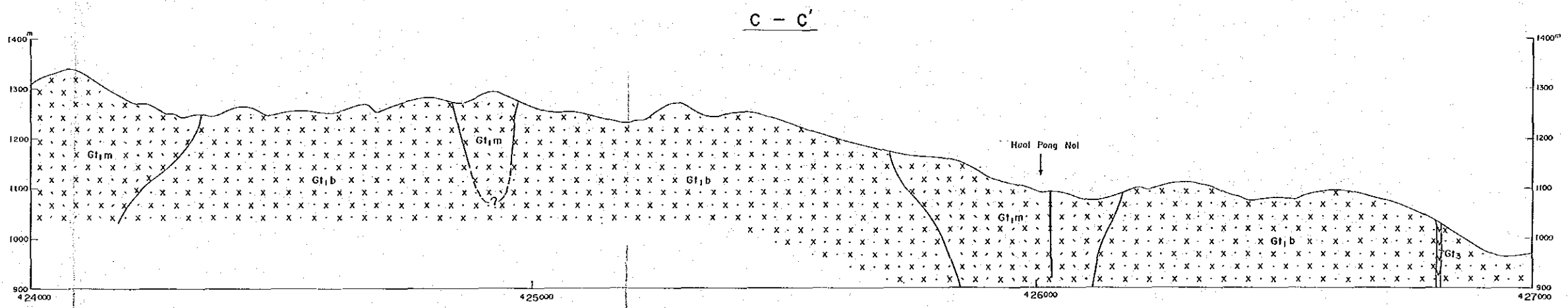
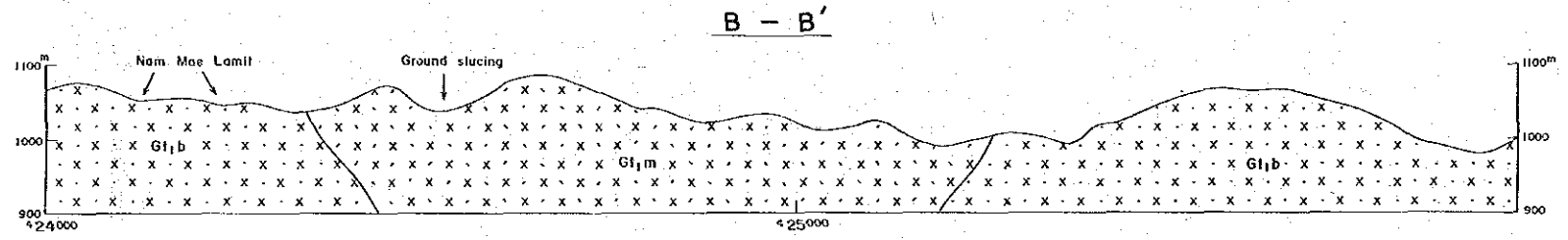
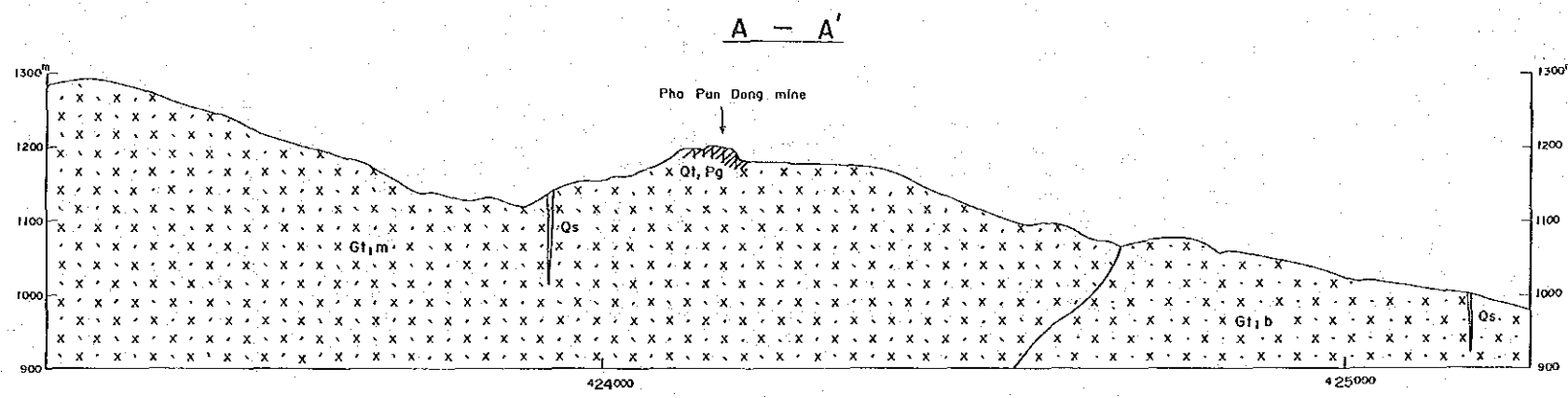
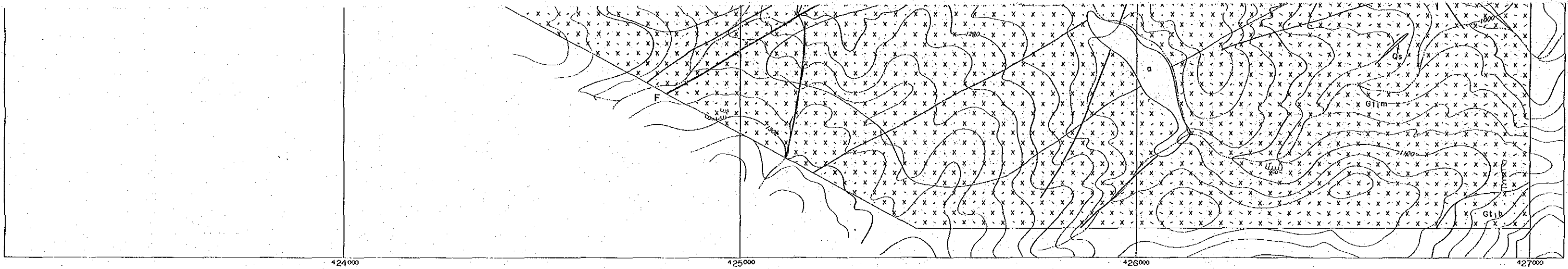
国際協力事業団 12796 図書資料室蔵書



METAL MINING AGENCY OF JAPAN JAPAN INTERNATIONAL COOPERATION AGENCY April 1985





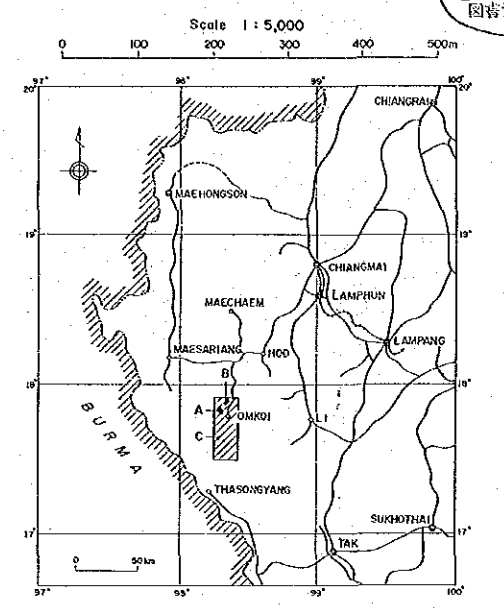


**LEGEND**

Age	Symbol	Rock facies
Quaternary	[Box with 'a']	a Gravel and sand
Triassic	[Box with diagonal lines /]	Qs Quartz vein (low temperature, silicifying)
	[Box with diagonal lines \]	Q Quartz vein (high temperature, barren)
	[Box with diagonal lines / and dots]	Qt Quartz vein (high temperature, tourmaline-bearing)
	[Box with diagonal lines /]	Pg Pegmatite vein
	[Box with diagonal lines \]	Ap Aplite vein
	[Box with diagonal lines / and dots]	Gt <sub>3</sub> Fine-grained biotite granite
	[Box with 'x' pattern]	G1 <sub>m</sub> Medium- to coarse-grained, foliated, porphyritic muscovite-biotite granite
	[Box with 'x' pattern]	G1 <sub>b</sub> Medium- to coarse-grained, foliated, porphyritic biotite granite
	[Line with 'F']	Fault
	[Line]	Photo lineament
	[Circle with 'X']	Mine works (active, inactive)

GEOLOGICAL SURVEY  
OF  
THE OMKOI AREA, KINGDOM OF THAILAND  
PHASE II  
GEOLOGIC MAP AND PROFILES  
(AREA B)

国際協力事業団  
12.96  
図書資料室蔵書

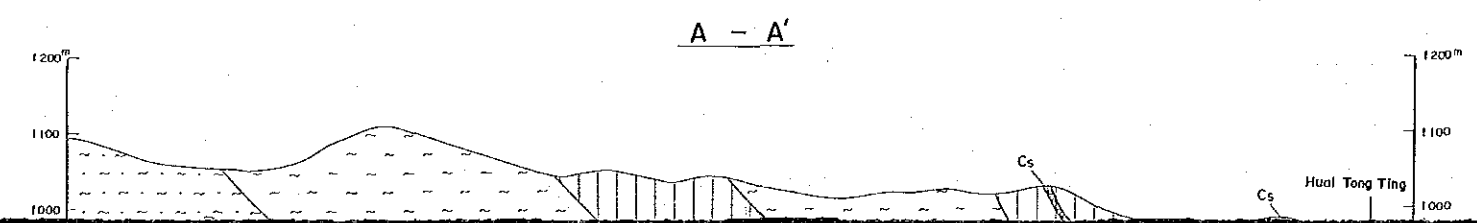


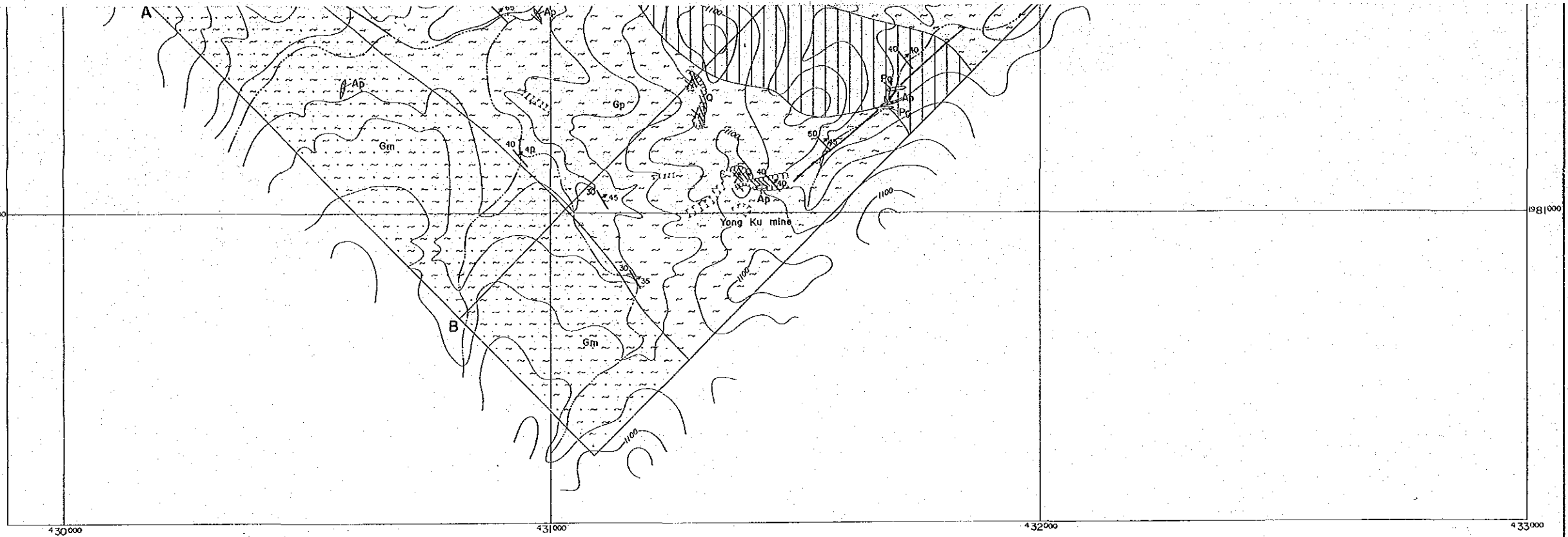
METAL MINING AGENCY OF JAPAN  
JAPAN INTERNATIONAL COOPERATION AGENCY  
April 1985



LEGEND

Age	Symbol	Rock facies
Quaternary	□	a Gravel and sand
Cretaceous(?)	▨	Q Quartz vein
	▨	Pg Pegmatite vein
	▨	Ap Aplite vein
Precambrian	▨	Ls Fine - banded gray limestone
	▨	Cs Calc - silicate rock
	▨	Qs Quartz schist, pelitic schist and quartzite
	▨	Gp Fine - to coarse - grained, porphyritic biotite paragneiss
	▨	Gm Fine - to medium - grained, partly porphyritic, migmatitic biotite paragneiss
	↗	Gneissosity
	—	Photo lineament
	⊗	Mine works (active, inactive)

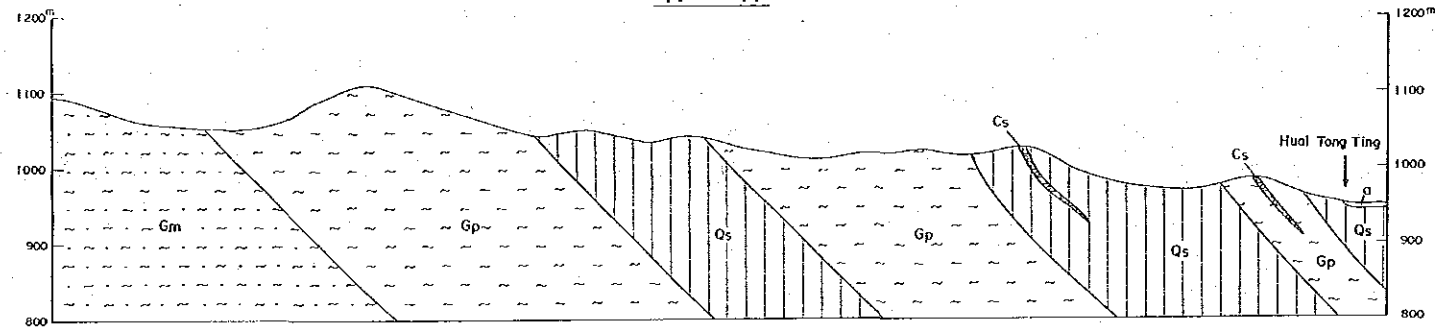




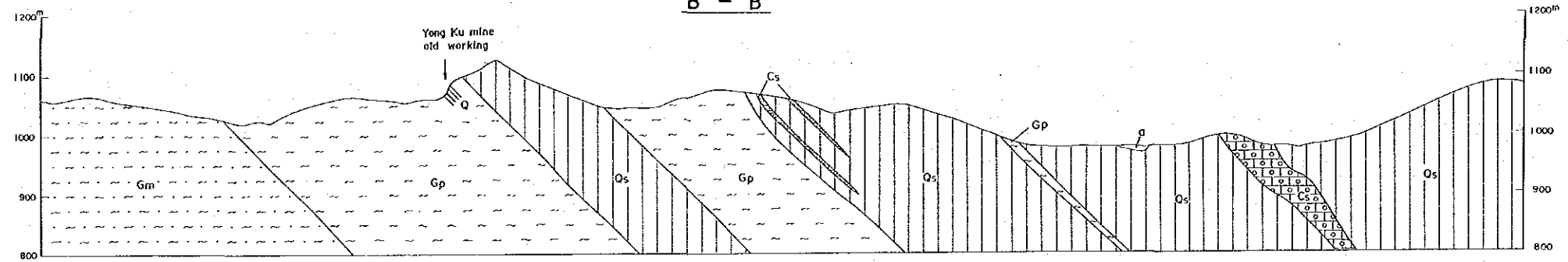
**LEGEND**

Age	Symbol	Rock facies
Quaternary		a Gravel and sand
Cretaceous(?)		Q Quartz vein
		Pg Pegmatite vein
		Ap Aplite vein
Precambrian		Ls Fine-banded gray limestone
		Cs Calc-silicate rock
		Qs Quartz schist, pelitic schist and quartzite
		Gp Fine- to coarse-grained, porphyritic biotite paragneiss
		Gm Fine- to medium-grained, partly porphyritic, migmatitic biotite paragneiss
		Photo lineament
		Mine works (active, inactive)

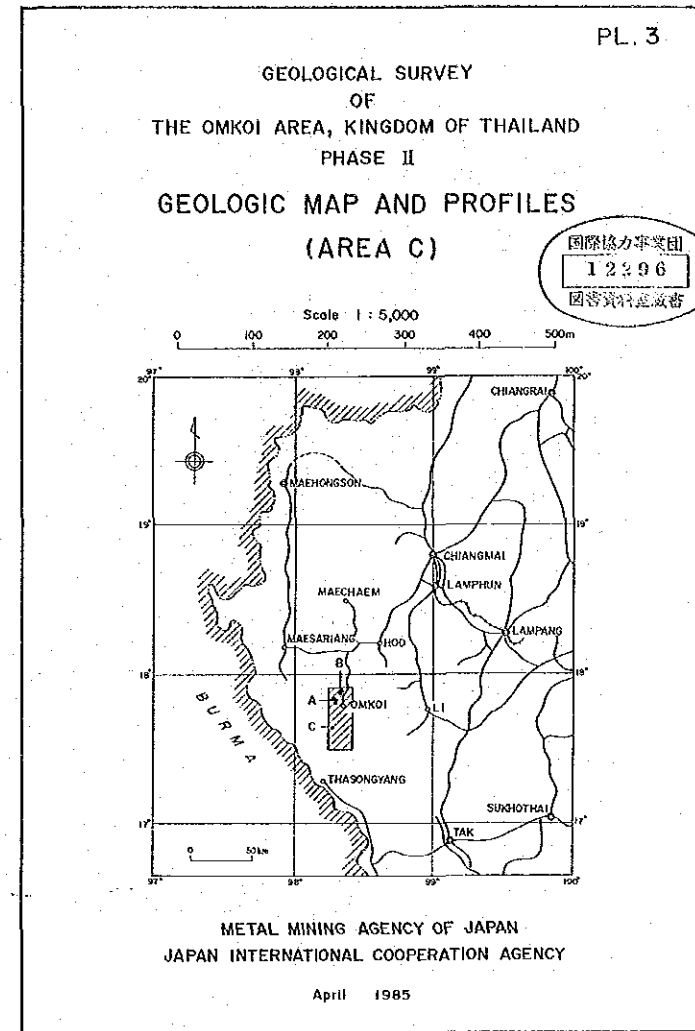
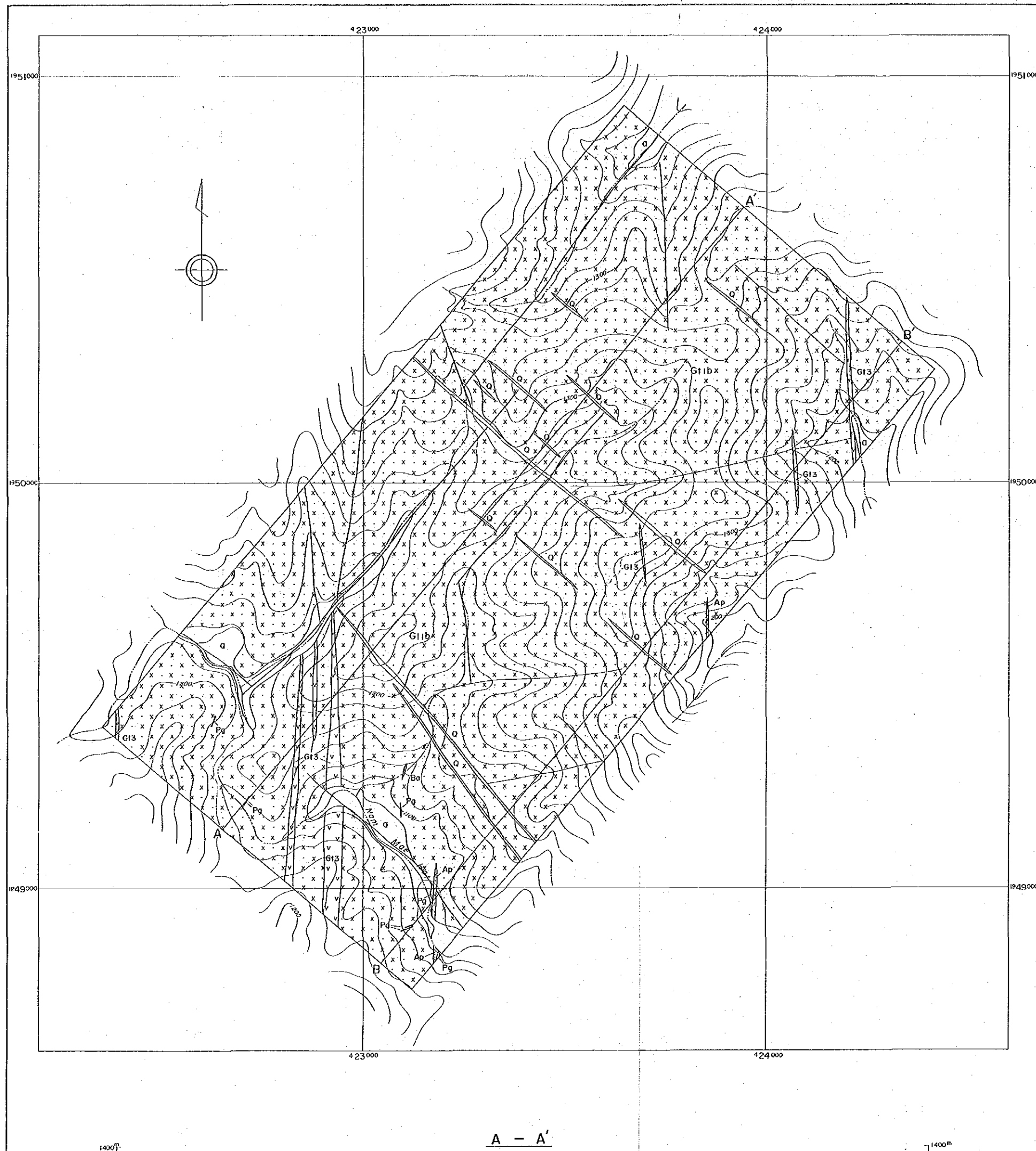
**A - A'**



**B - B'**







**LEGEND**

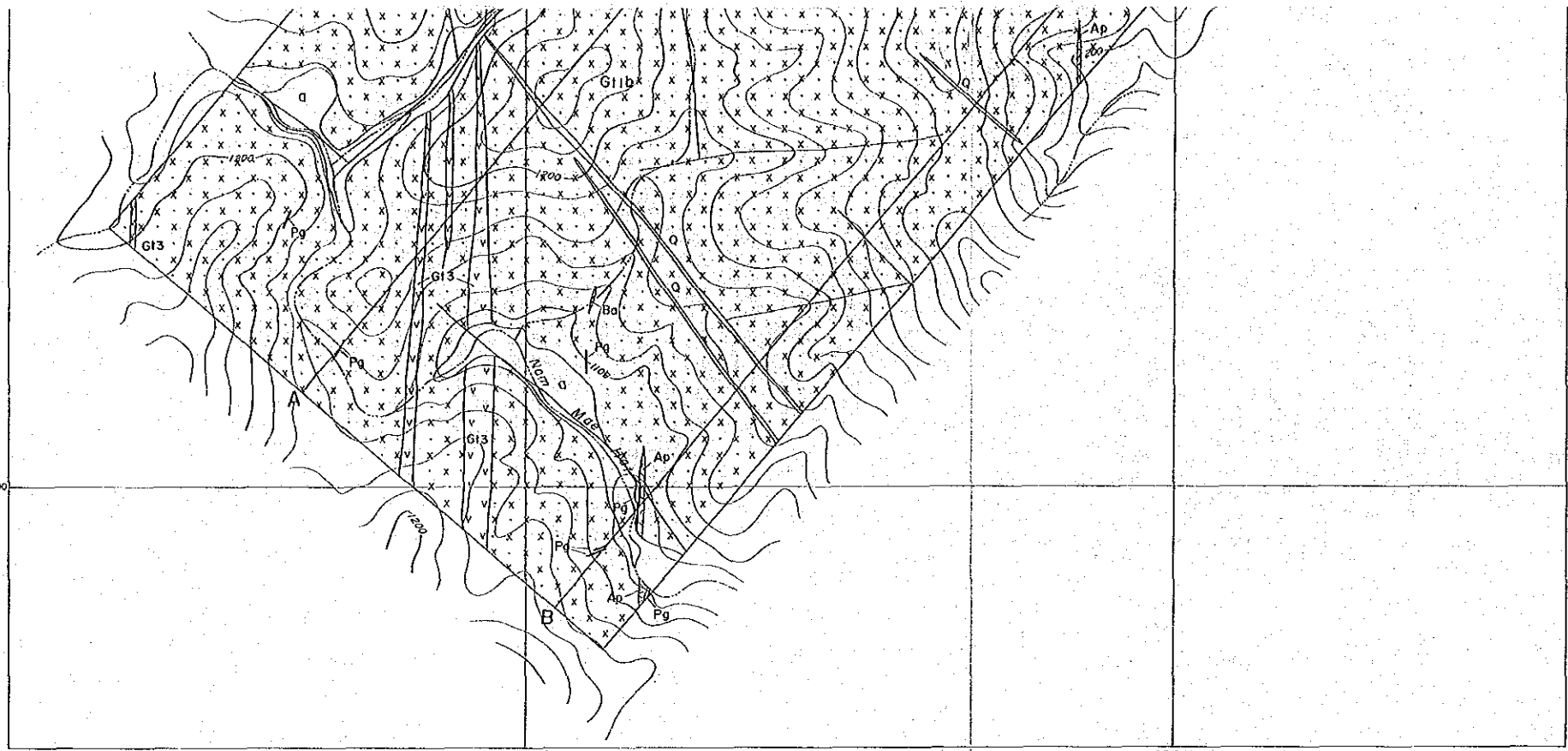
Age	Symbol	Rock facies
Quaternary	□	Q Gravel and sand
	▨	Pg Pegmatite vein
Triassic	▨	Q Quartz vein
	▨	Pg Pegmatite vein
	▨	Ba Basalt dike
	▨	Ap Aplite dike
	▨	G13 Fine-grained, porphyritic biotite granite
	▨	G1b Medium- to coarse-grained, foliated, porphyritic biotite granite
	—	Photo lineament

A - A'

1400m

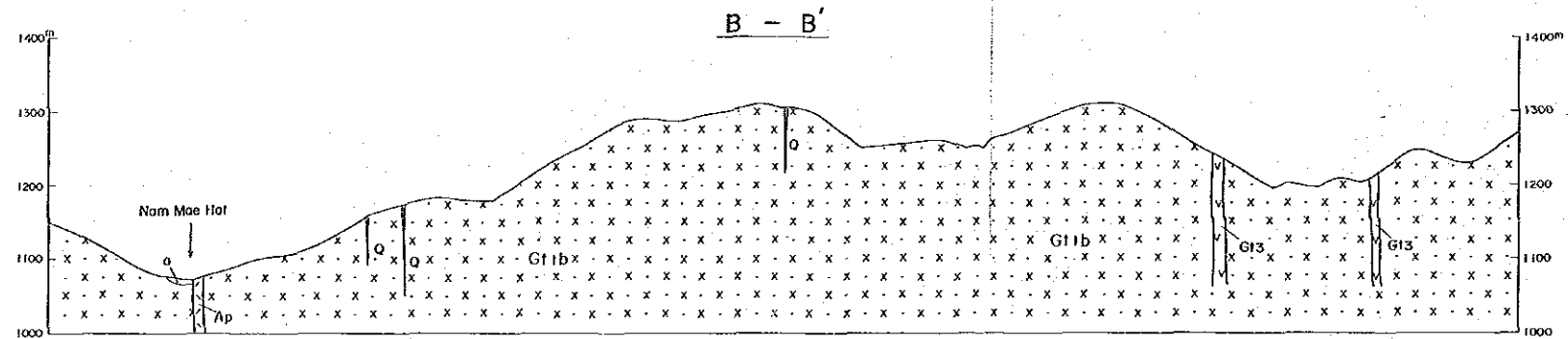
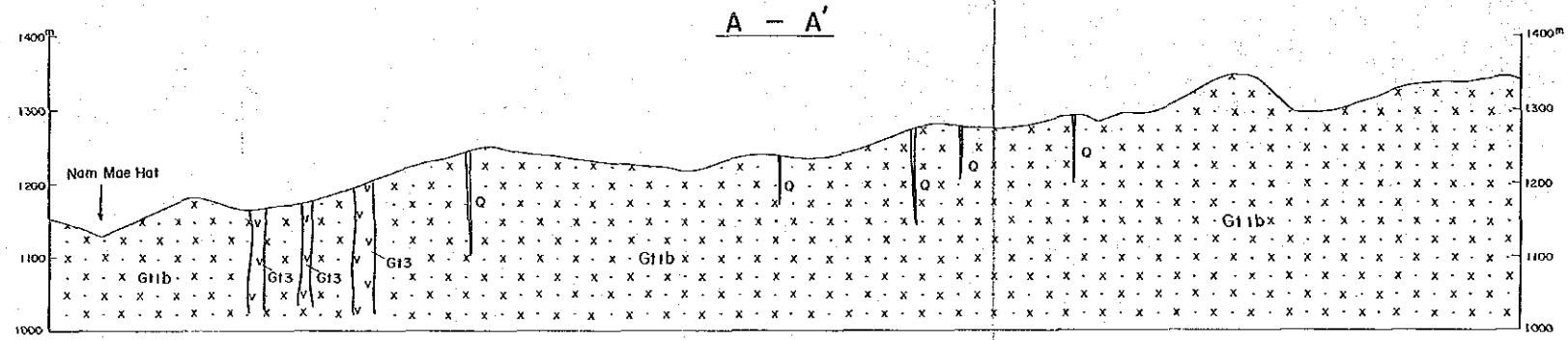
1400m



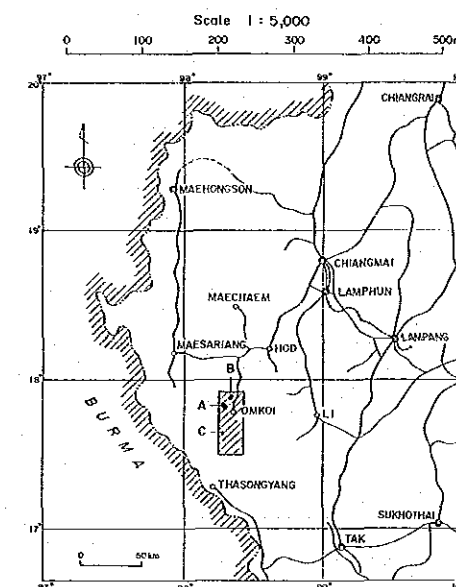


**LEGEND**

Age	Symbol	Rock facies
Quaternary	a	Gravel and sand
	Q	Quartz vein
Triassic	Pg	Pegmatite vein
	Ba	Basalt dike
	Ap	Aplite dike
	G13	Fine-grained, porphyritic biotite granite
	G11b	Medium- to coarse-grained, foliated, porphyritic biotite granite
	(dashed line)	Photo lineament



GEOLOGICAL SURVEY  
OF  
THE OMKOI AREA, KINGDOM OF THAILAND  
PHASE II  
LOCATION MAP OF ROCK, ORE AND  
GEOCHEMICAL SOIL SAMPLES (AREA A)



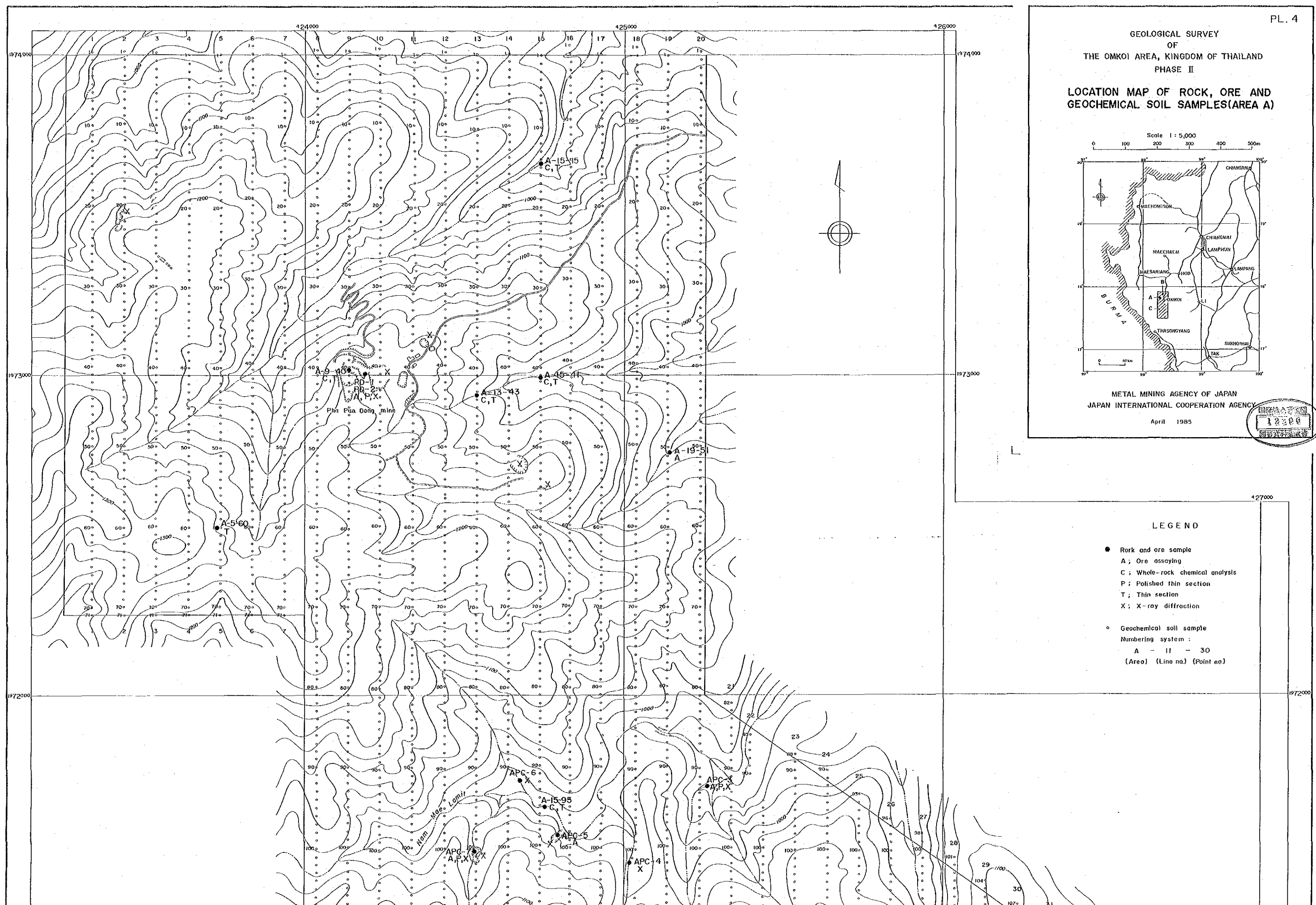
METAL MINING AGENCY OF JAPAN  
JAPAN INTERNATIONAL COOPERATION AGENCY

April 1985



LEGEND

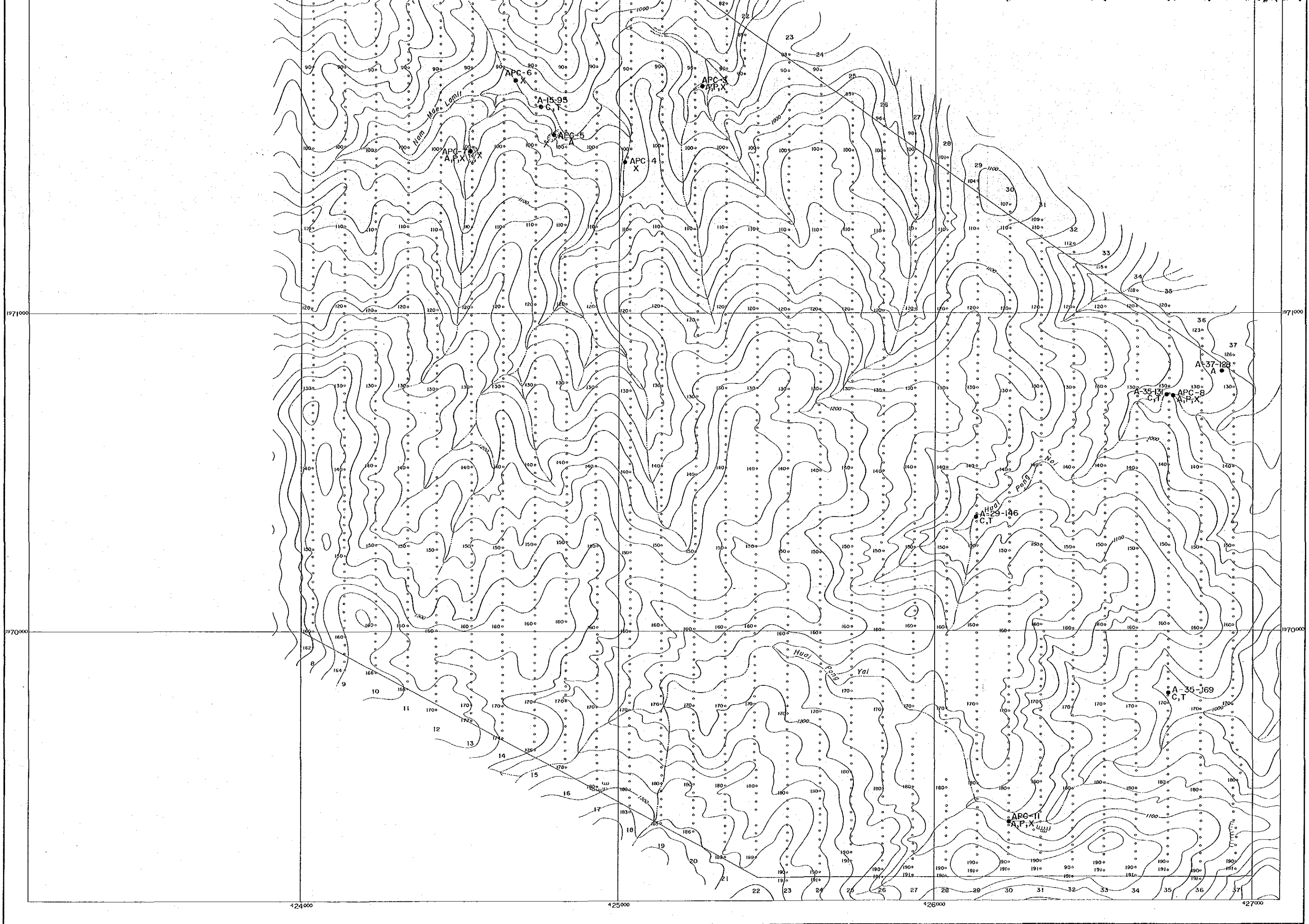
- Rock and ore sample
    - A; Ore assaying
    - C; Whole-rock chemical analysis
    - P; Polished thin section
    - T; Thin section
    - X; X-ray diffraction
  - Geochemical soil sample
- Numbering system:  
A - II - 30  
(Area) (Line no.) (Point no.)



### LEGEND

- Rock and ore sample
- A ; Ore assaying
- C ; Whole-rock chemical analysis
- P ; Polished thin section
- T ; Thin section
- X ; X-ray diffraction
  
- Geochemical soil sample
- Numbering system :
- A - II - 30
- (Area) (Line no.) (Point no.)

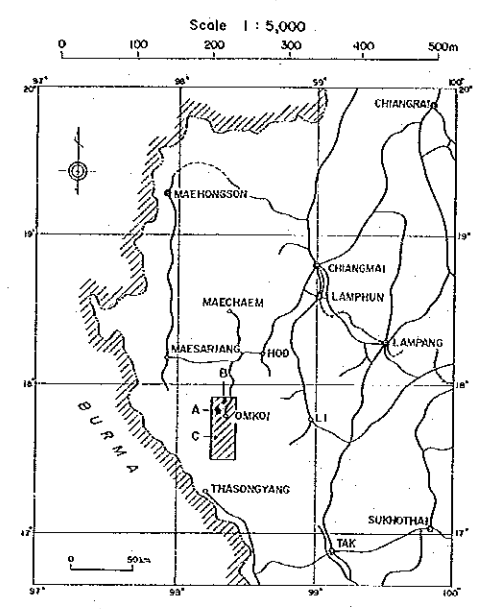






GEOLOGICAL SURVEY  
OF  
THE OMKOI AREA, KINGDOM OF THAILAND  
PHASE II

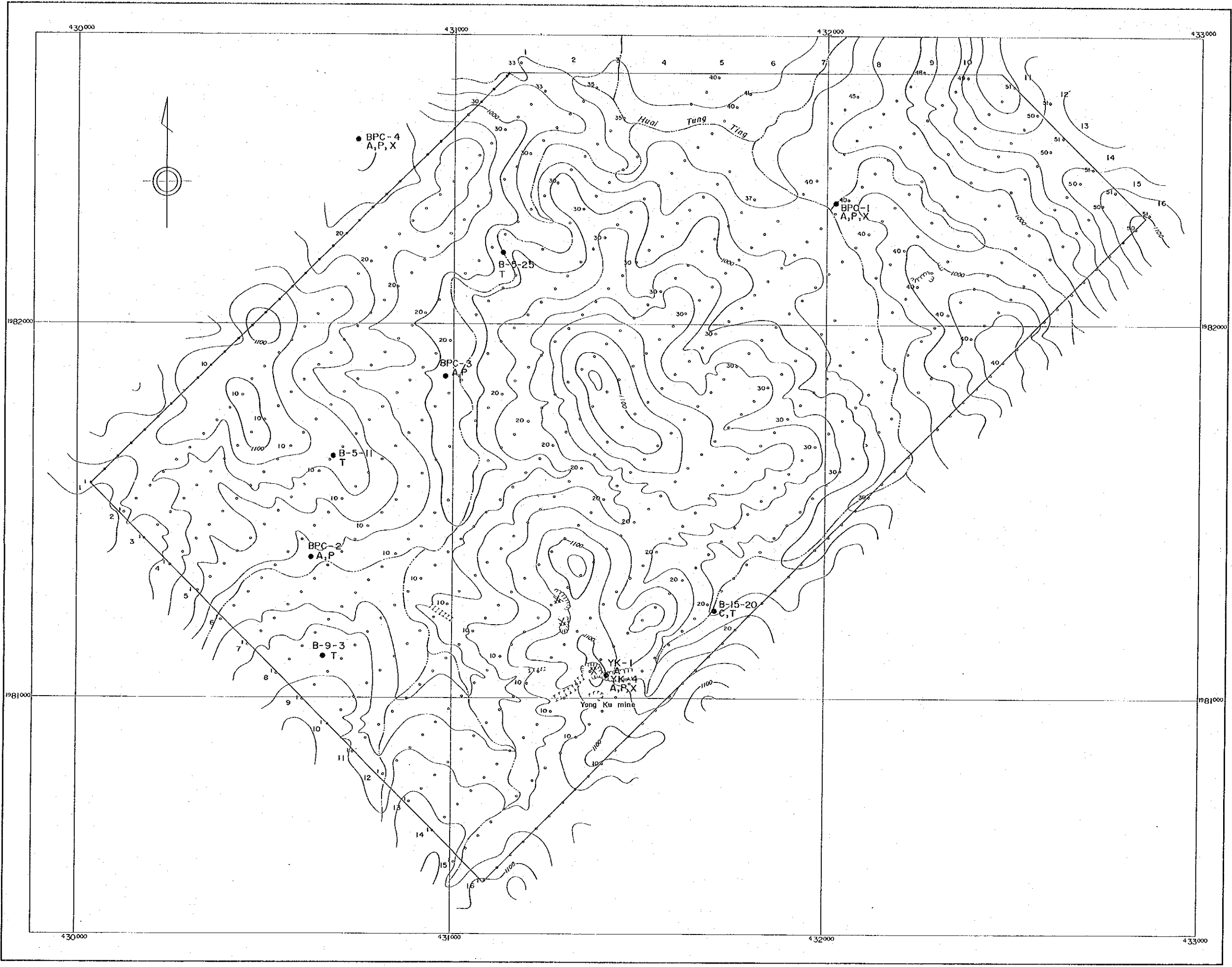
LOCATION MAP OF ROCK, ORE AND  
GEOCHEMICAL SOIL SAMPLES (AREA B)



METAL MINING AGENCY OF JAPAN  
JAPAN INTERNATIONAL COOPERATION AGENCY

April 1985

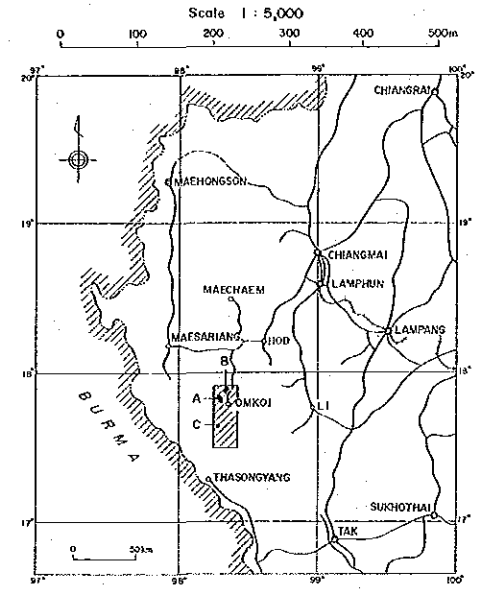
国際協力事業団  
12296  
図書資料室蔵



LEGEND

- Rock and ore sample
    - A; Ore assaying
    - C; Whole-rock chemical analysis
    - P; Polished thin section
    - T; Thin section
    - X; X-ray diffraction
  - Geochemical soil sample
- Numbering system :  
B - II - 30  
(Area) (Line no.) (Point no.)

GEOLOGICAL SURVEY  
OF  
THE OMKOI AREA, KINGDOM OF THAILAND  
PHASE II  
LOCATION MAP OF ROCK, ORE AND  
GEOCHEMICAL SOIL SAMPLES (AREA C)

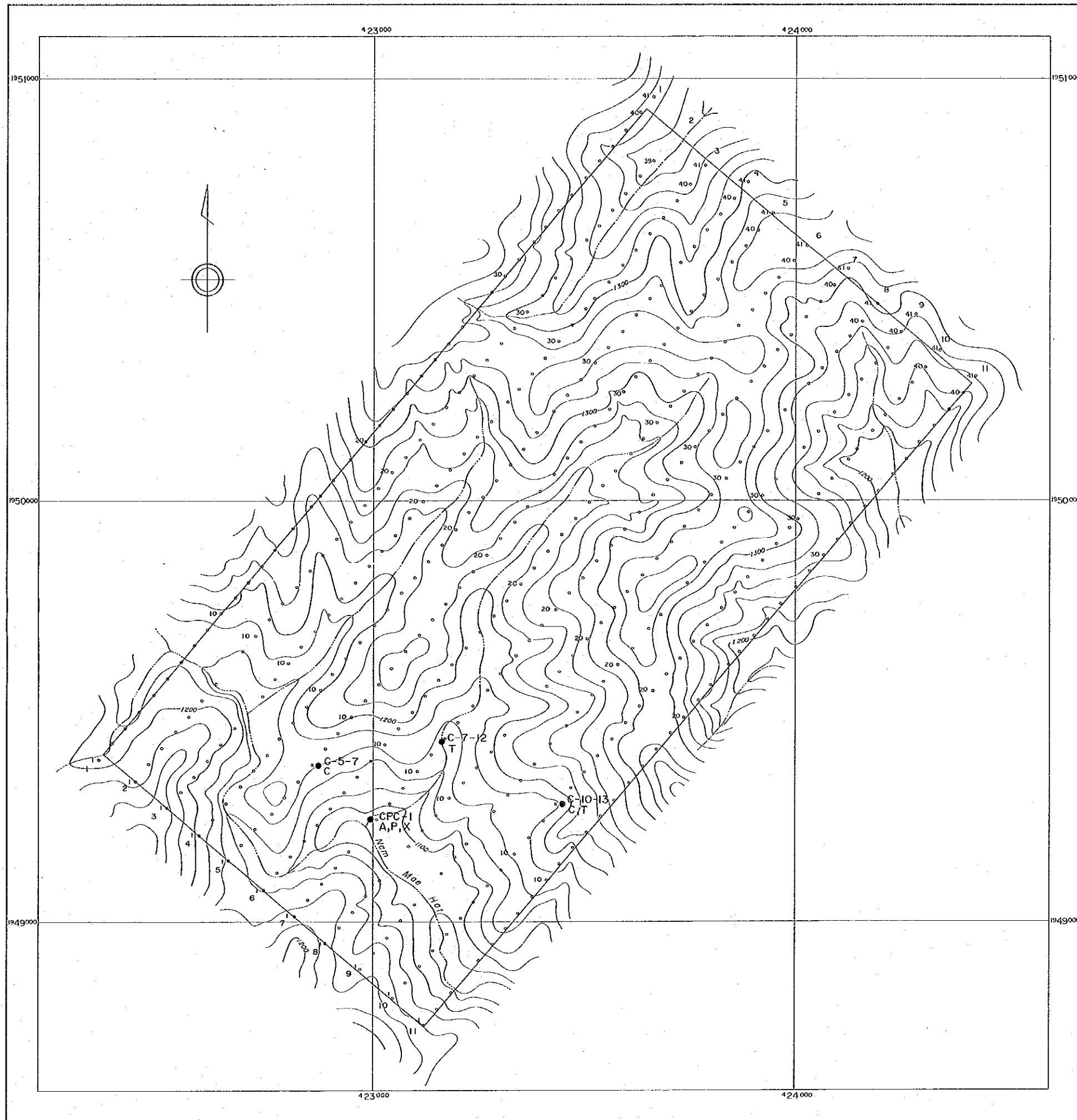


METAL MINING AGENCY OF JAPAN  
JAPAN INTERNATIONAL COOPERATION AGENCY  
April 1985

司 務 局  
1 2 2 9 6  
図 書 資 料 室 蔵 書

LEGEND

- Rock and ore sample
  - A; Ore assaying
  - C; Whole-rock chemical analysis
  - P; Polished thin section
  - T; Thin section
  - X; X-ray diffraction
- Geochemical soil sample  
Numbering system :  
C - 11 - 30  
(Area) (Line no) (Point no)



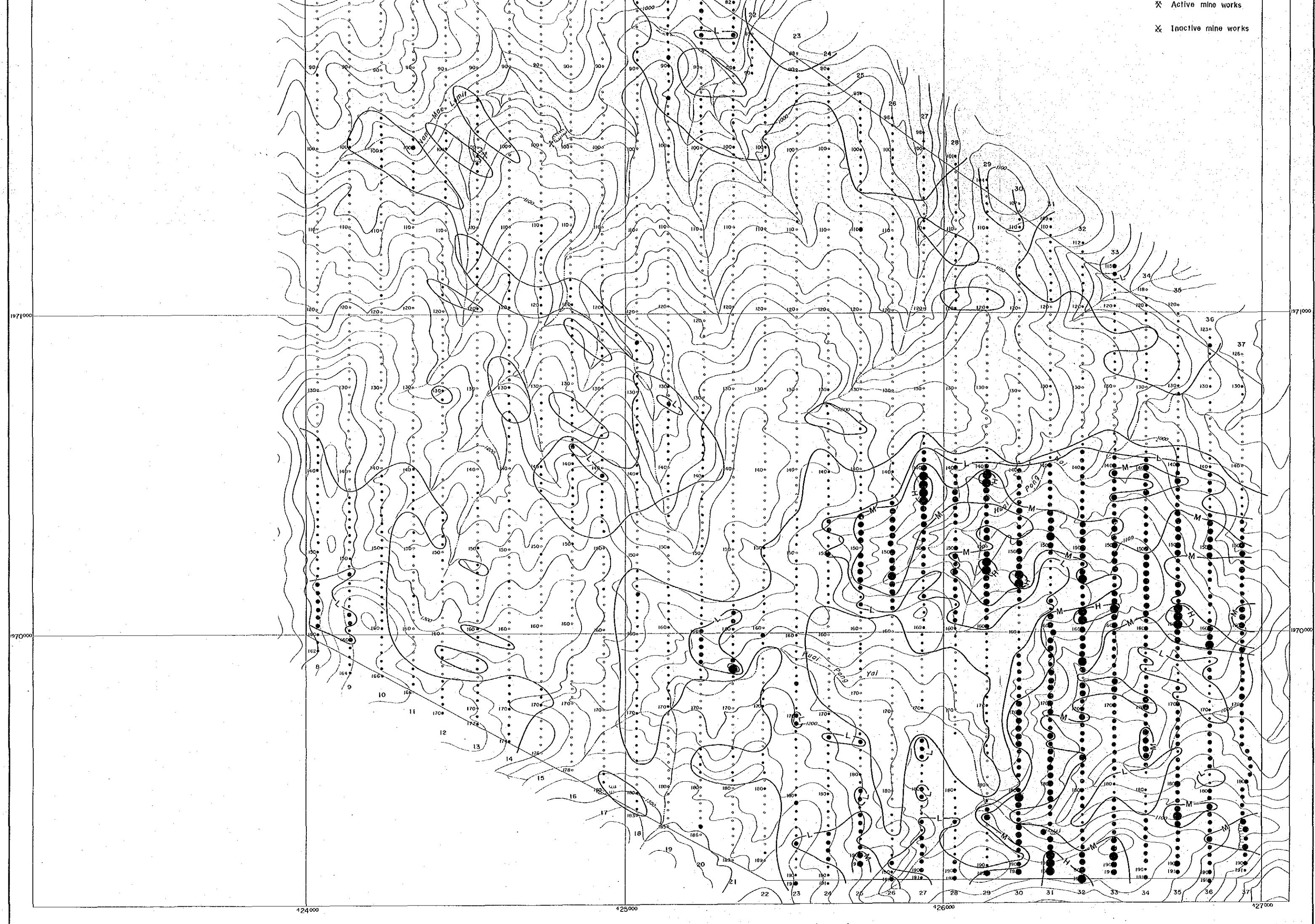






× Active mine works

⊗ Inactive mine works



124000

125000

126000

127000

197000

197000

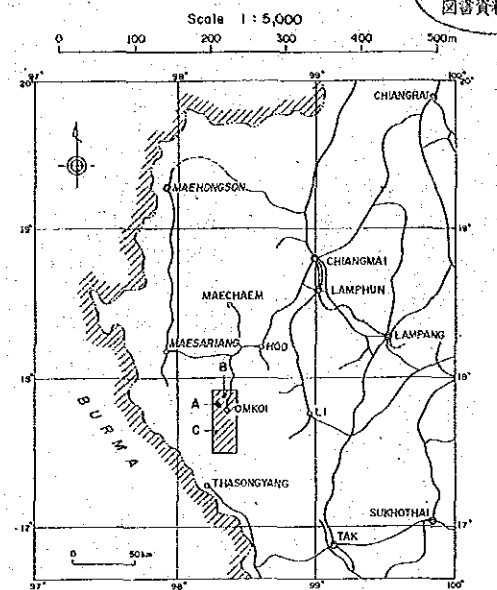
197000

197000

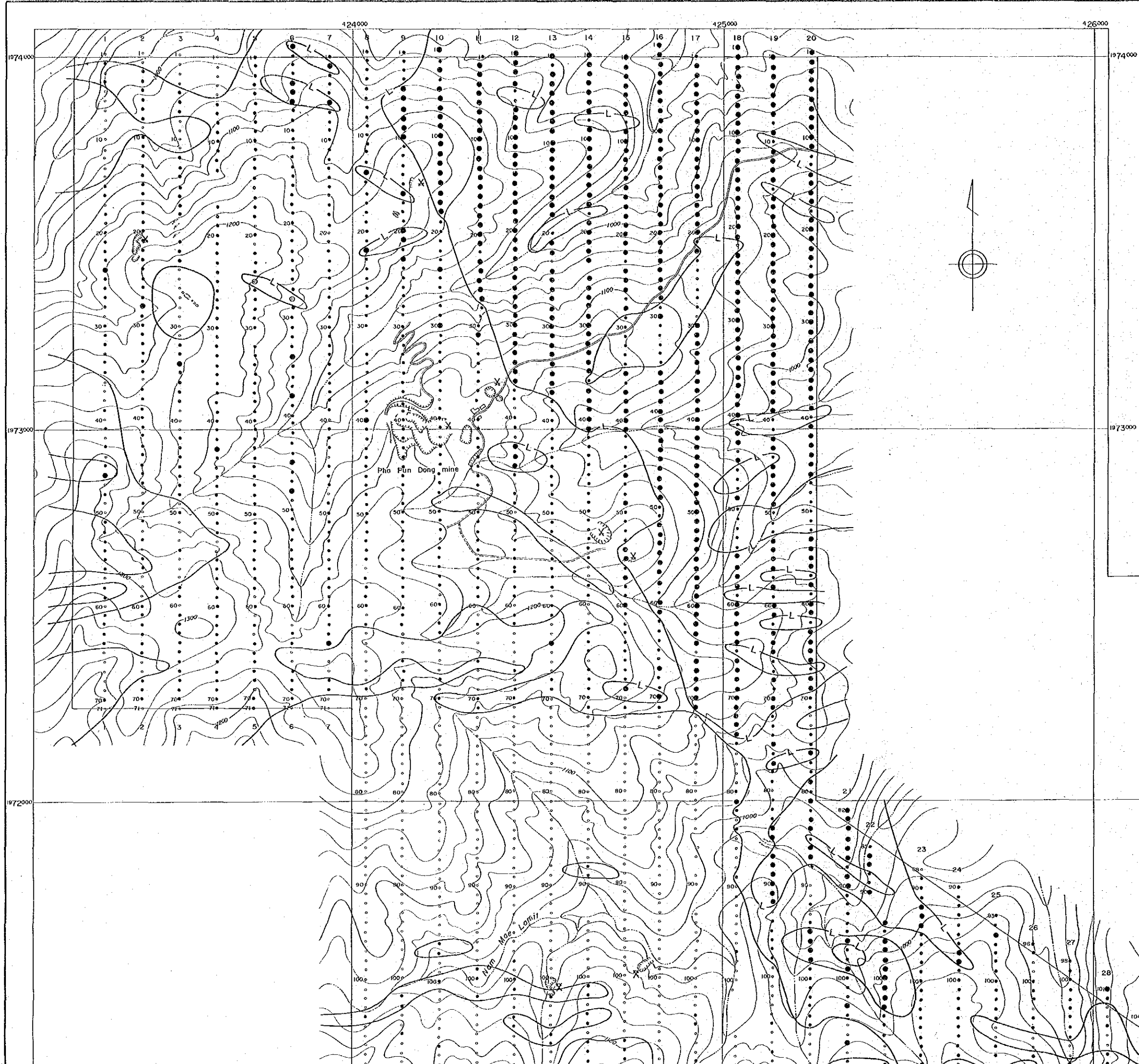
GEOLOGICAL SURVEY OF THE OMKOI AREA, KINGDOM OF THAILAND PHASE II

Ta CONTENT DISTRIBUTION MAP (AREA A)

国際協力事業団 12296 図書資料室蔵書



METAL MINING AGENCY OF JAPAN JAPAN INTERNATIONAL COOPERATION AGENCY April 1985



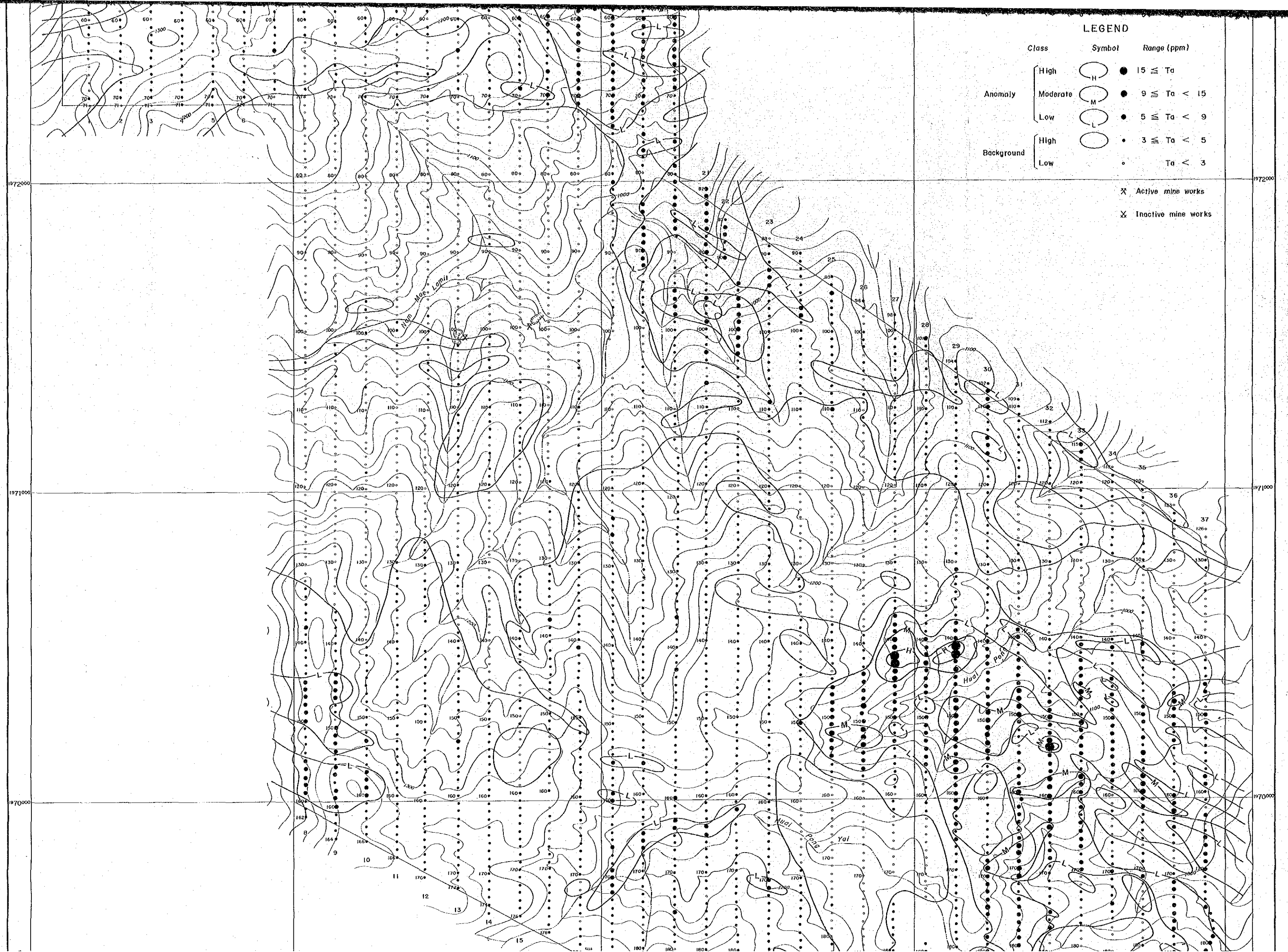
**LEGEND**

Class	Symbol	Range (ppm)
Anomaly	High (H) ●	15 ≤ Ta
	Moderate (M) ●	9 ≤ Ta < 15
	Low (L) ●	5 ≤ Ta < 9
Background	High (○)	3 ≤ Ta < 5
	Low (◦)	Ta < 3

X Active mine works  
 X Inactive mine works

427000

1972000



LEGEND

Class	Symbol	Range (ppm)
Anomaly	High (H)	15 $\geq$ Ta
	Moderate (M)	9 $\geq$ Ta < 15
	Low (L)	5 $\geq$ Ta < 9
Background	High	3 $\geq$ Ta < 5
	Low	Ta < 3

X Active mine works  
 X Inactive mine works



✕ Active mine works  
✕ Inactive mine works

