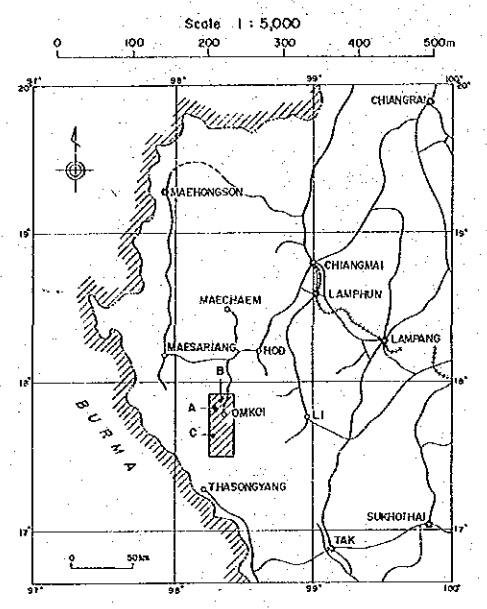
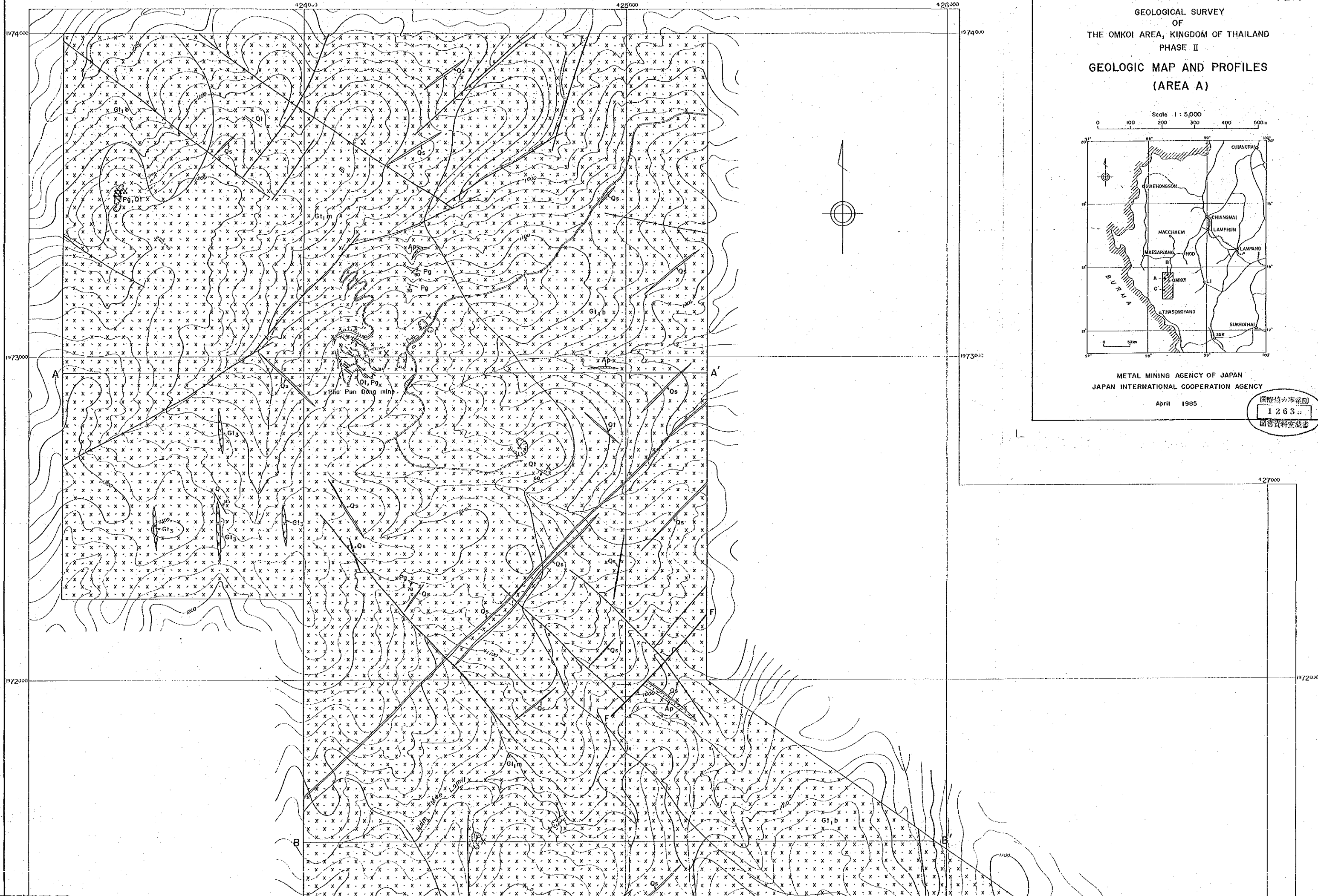


GEOLOGICAL SURVEY
OF
THE OMKOI AREA, KINGDOM OF THAILAND
PHASE II
GEOLOGIC MAP AND PROFILES
(AREA A)



METAL MINING AGENCY OF JAPAN
JAPAN INTERNATIONAL COOPERATION AGENCY
April 1985

国際協力事業団
1263
図書資料室蔵書



1972000

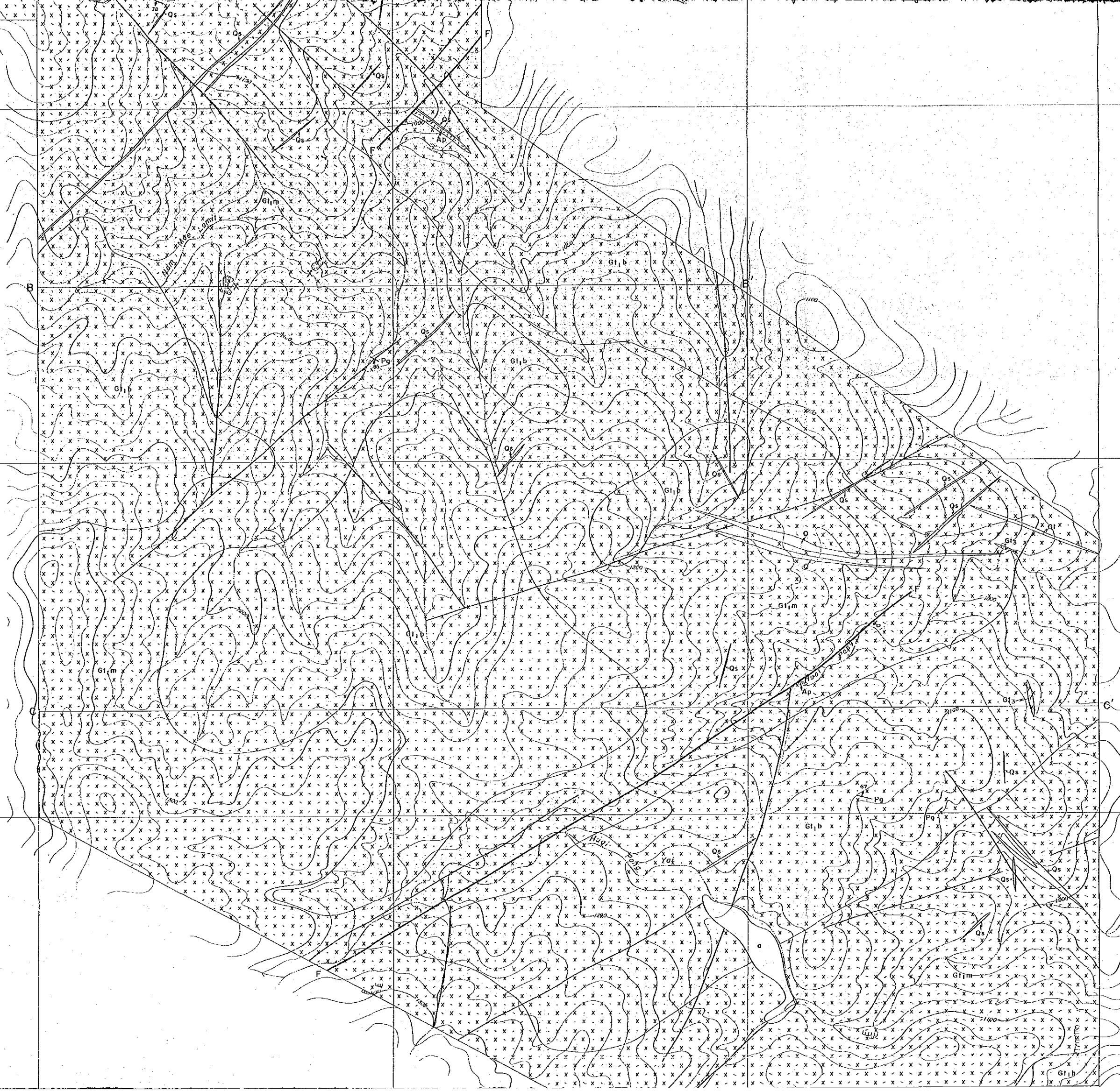
1972000

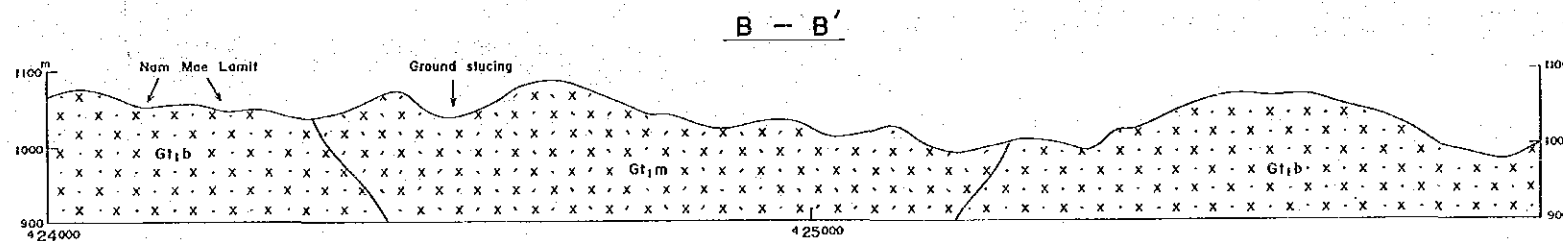
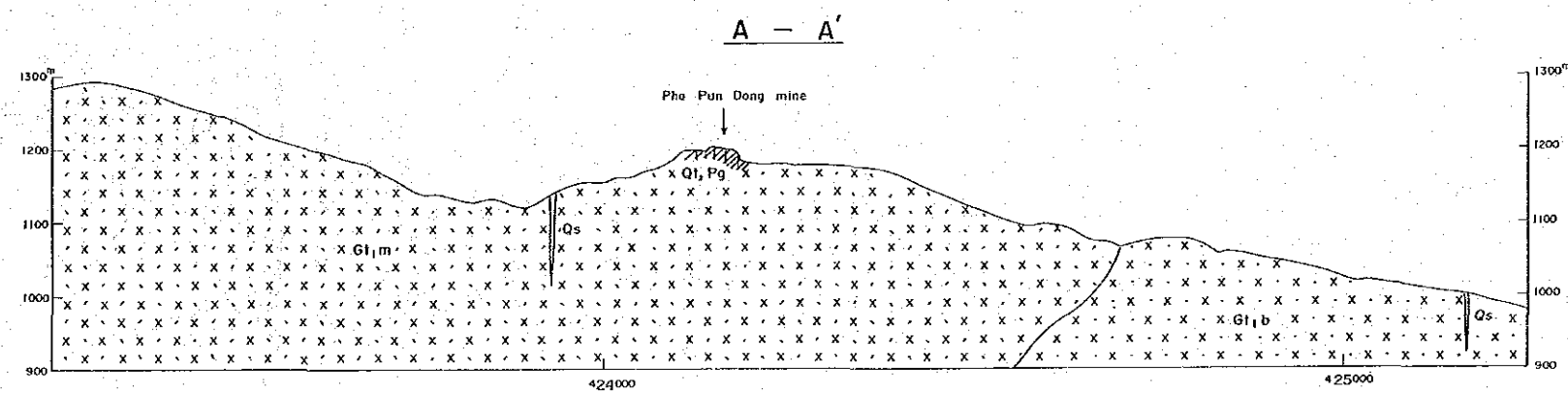
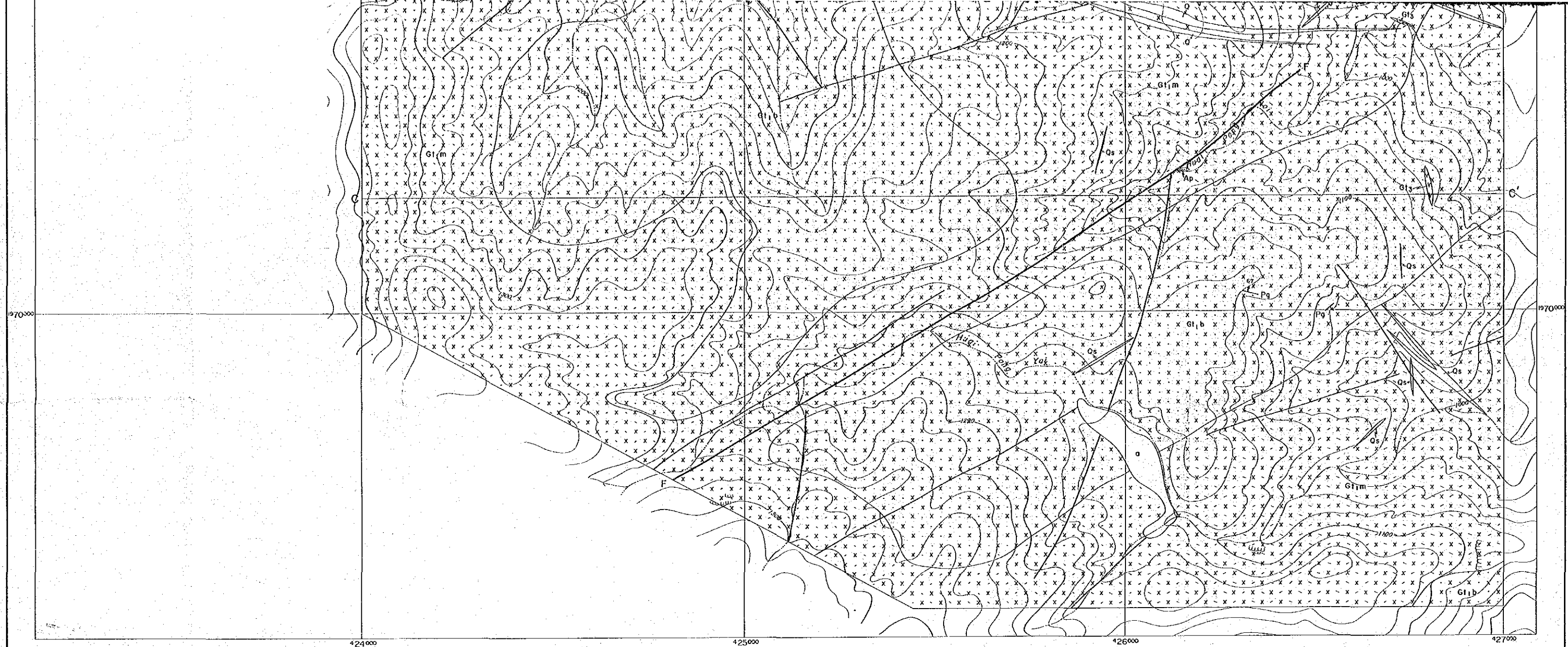
1971000

1971000

1970000

1970000





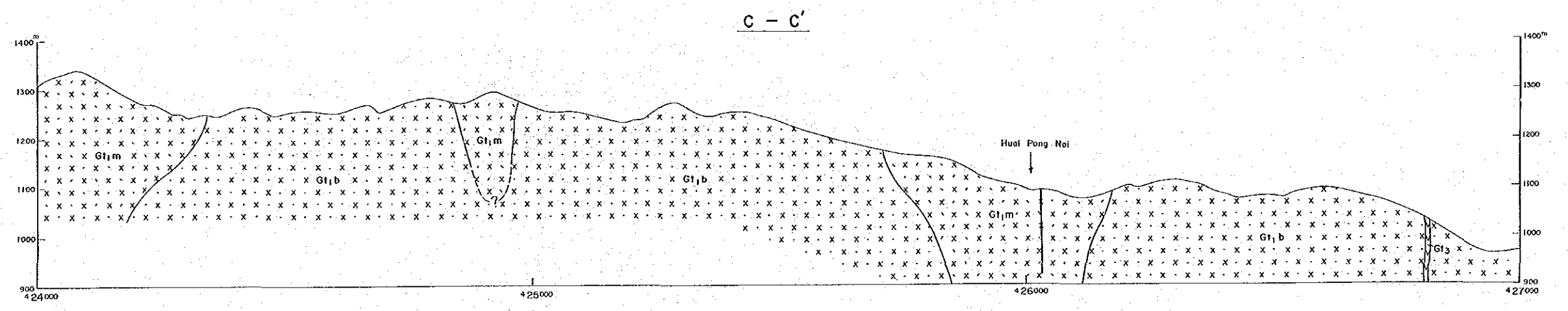
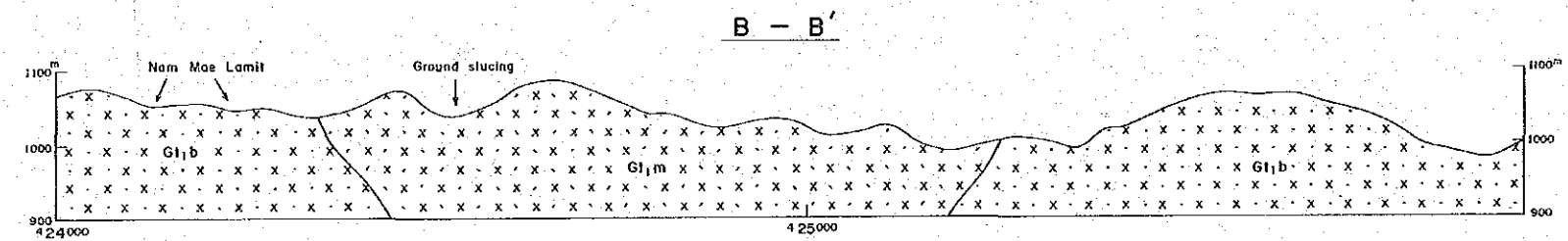
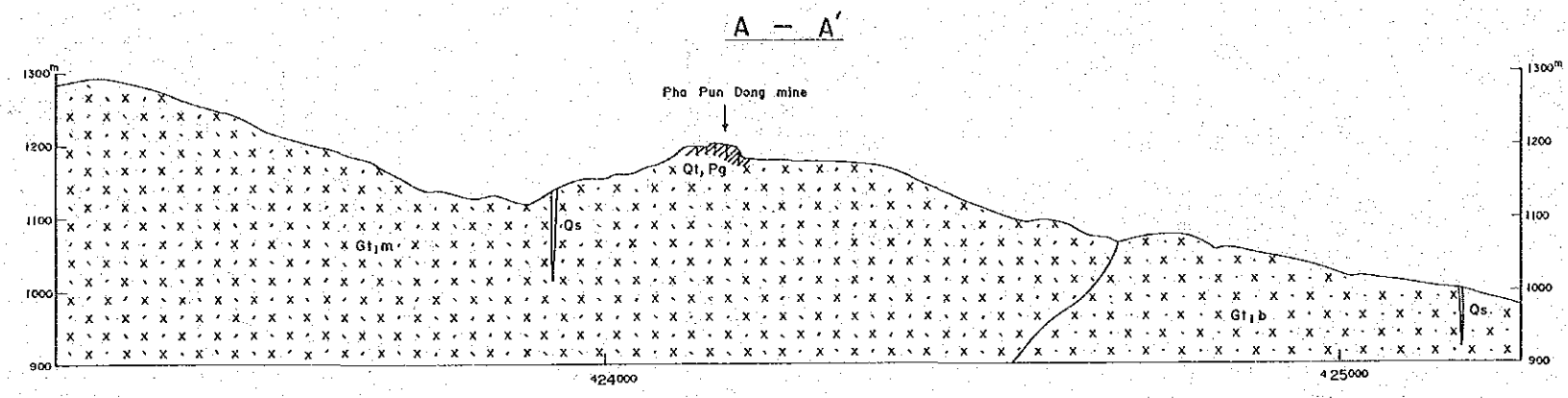
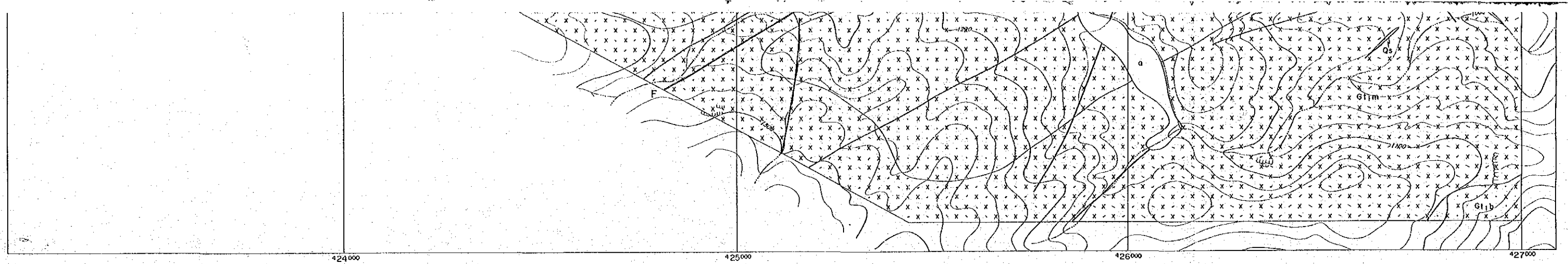
LEGEND

Age	Symbol	Rock facies
Quaternary		o Gravel and sand
		Qs Quartz vein (low temperature, silicifying)
		Q Quartz vein (high temperature, barren)
		Qt Quartz vein (high temperature, tourmaline-bearing)
Triassic		Pg Pegmatite vein
		Ap Aplite vein
		Gt3 Fine-grained biotite granite
		Gt1m Medium- to coarse-grained, foliated, porphyritic muscovite-biotite granite
		Gt1b Medium- to coarse-grained, foliated, porphyritic biotite granite
		F Fault
		Photo lineament
		Mine works (active, inactive)

C - C'

1400m

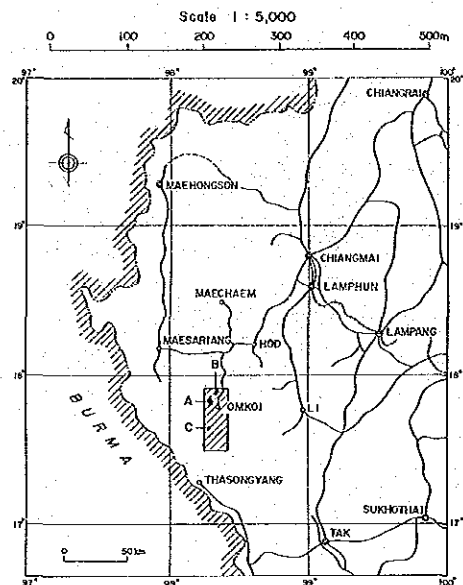
1400m



LEGEND

Age	Symbol	Rock facies
Quaternary	[Blank box]	a Gravel and sand
Triassic	[Diagonal lines /]	Qs Quartz vein (low temperature, silicifying)
	[Diagonal lines \]	Q Quartz vein (high temperature, barren)
	[Diagonal lines / with dots]	Qt Quartz vein (high temperature, tourmaline-bearing)
	[Diagonal lines / with circles]	Pg Pegmatite vein
	[Diagonal lines / with triangles]	Ap Aplite vein
	[Diagonal lines / with stars]	G13 Fine-grained biotite granite
	[Cross-hatched box]	G1m Medium- to coarse-grained, foliated, porphyritic muscovite-biotite granite
	[Cross-hatched box with dots]	G1b Medium- to coarse-grained, foliated, porphyritic biotite granite
	[Line with 'F']	Fault
	[Dashed line]	Photo lineament
	[Mine symbol]	Mine works (active, inactive)

GEOLOGICAL SURVEY
OF
THE OMKOI AREA, KINGDOM OF THAILAND
PHASE II
GEOLOGIC MAP AND PROFILES
(AREA B)

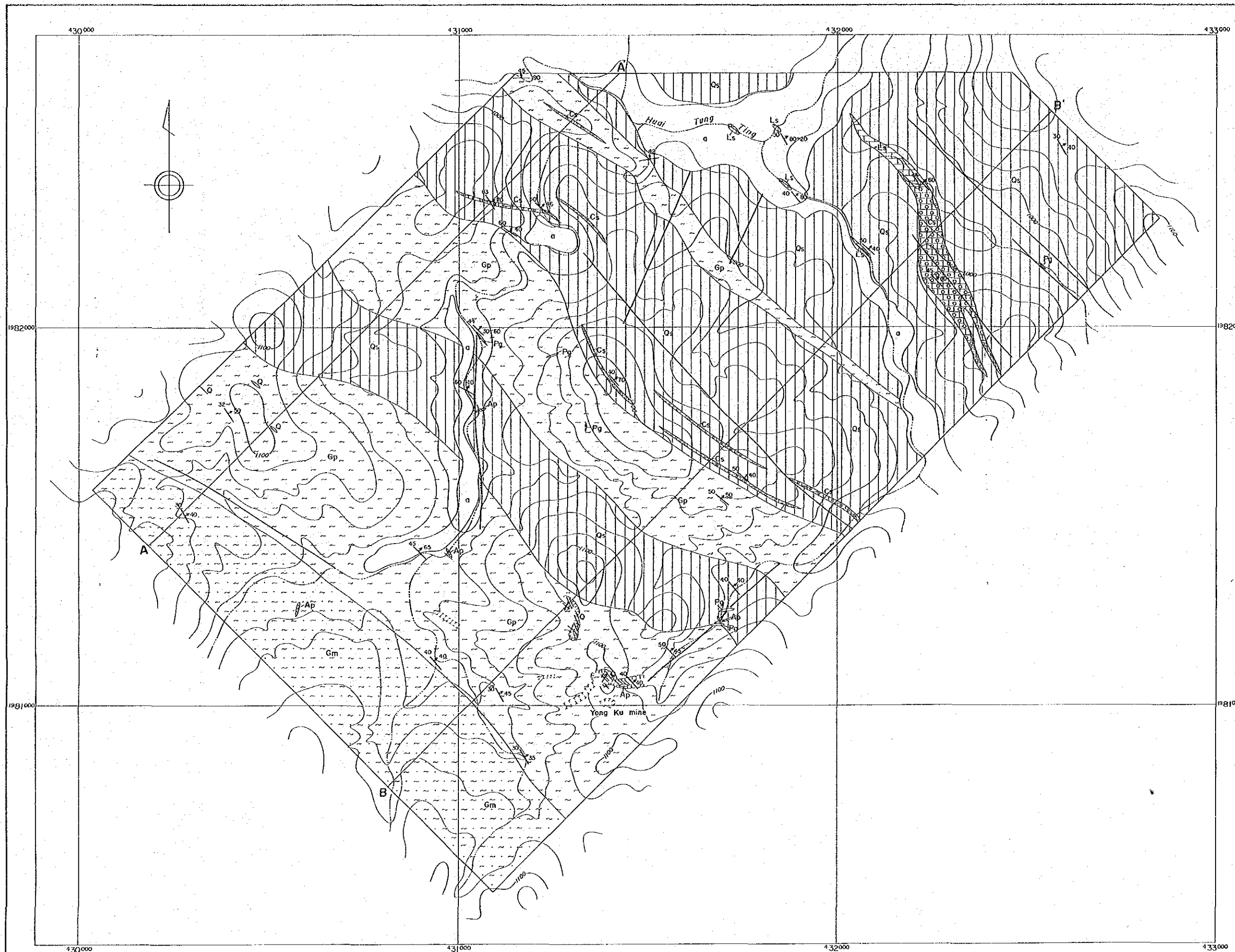


METAL MINING AGENCY OF JAPAN
JAPAN INTERNATIONAL COOPERATION AGENCY
April 1985

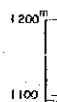
国際協力事業団
12635
図書資料室蔵書

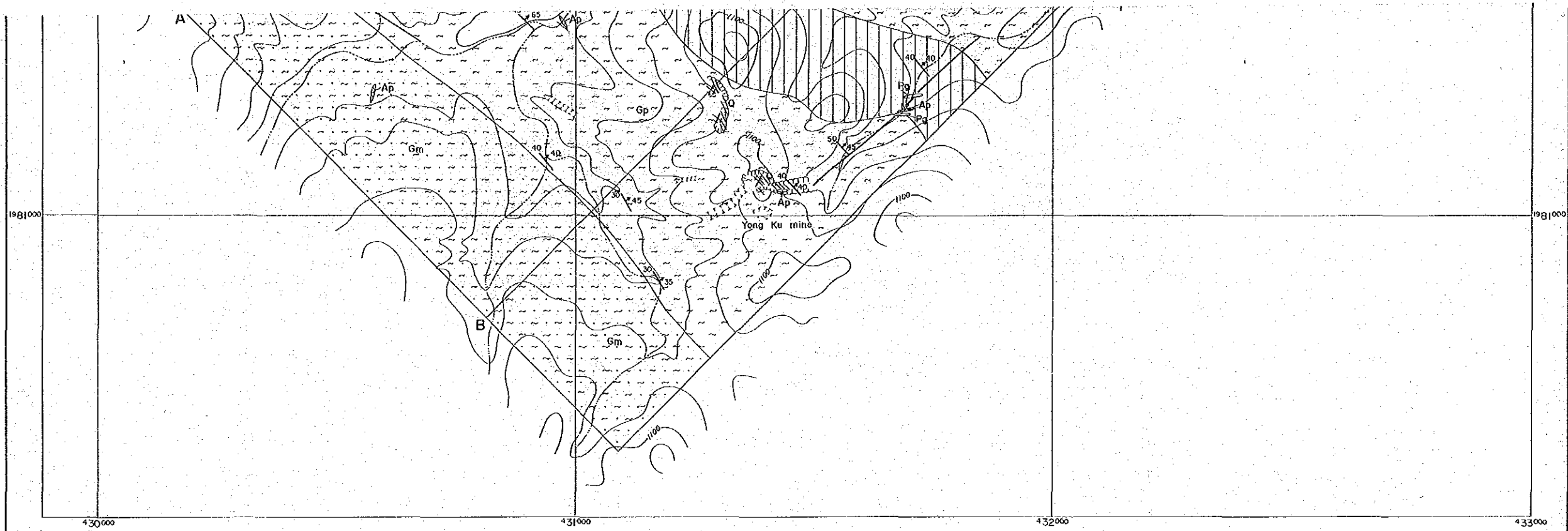
LEGEND

Age	Symbol	Rock facies
Quaternary	[White box]	a Gravel and sand
Cretaceous (?)	[Diagonal lines /]	Q Quartz vein
	[Diagonal lines \]	Pg Pegmatite vein
	[Diagonal lines / and \]	Ap Aplite vein
Precambrian	[Horizontal lines]	Ls Fine - banded gray limestone
	[Vertical lines]	Cs Calc - silicate rock
	[Wavy lines]	Qs Quartz schist, pelitic schist and quartzite
	[Dotted pattern]	Gp Fine - to coarse - grained, porphyritic biotite paragneiss
	[Cross-hatched pattern]	Gm Fine - to medium - grained, partly porphyritic, migmatitic biotite paragneiss
	[Wavy line symbol]	Gneissosity
	[Thin line symbol]	Photo lineament
	[Circle with 'X' symbol]	Mine works (active, inactive)



A - A'

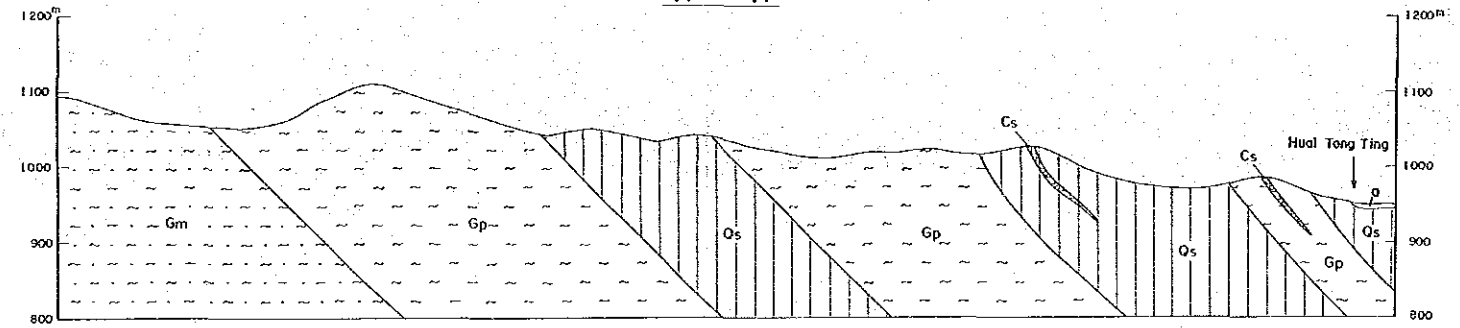




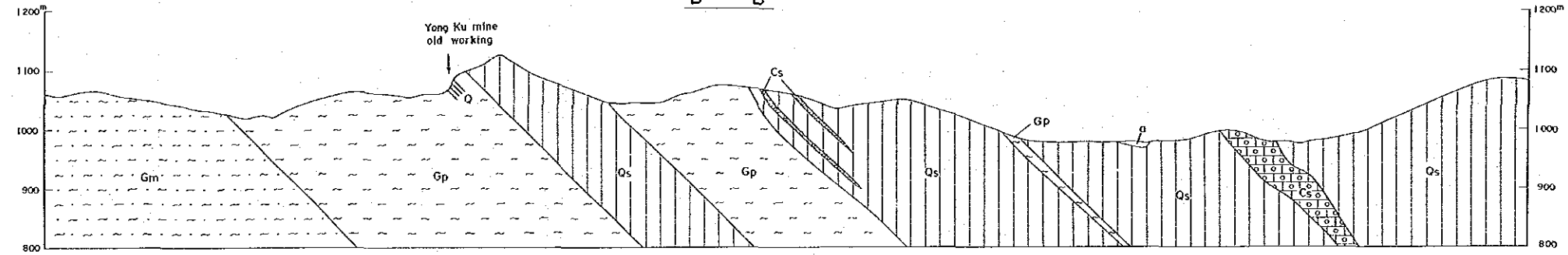
LEGEND

Age	Symbol	Rock facies
Quaternary		a Gravel and sand
Cretaceous(?)		Q Quartz vein
		Pg Pegmatite vein
		Ap Aplite vein
Precambrian		Ls Fine-banded gray limestone
		Cs Calc-silicate rock
		Qs Quartz schist, pelitic schist and quartzite
		Gp Fine- to coarse-grained, porphyritic biotite paragneiss
		Gm Fine- to medium-grained, partly porphyritic, migmattic biotite paragneiss
		Gneissosity
		Photo lineament
		Mine works (active, inactive)

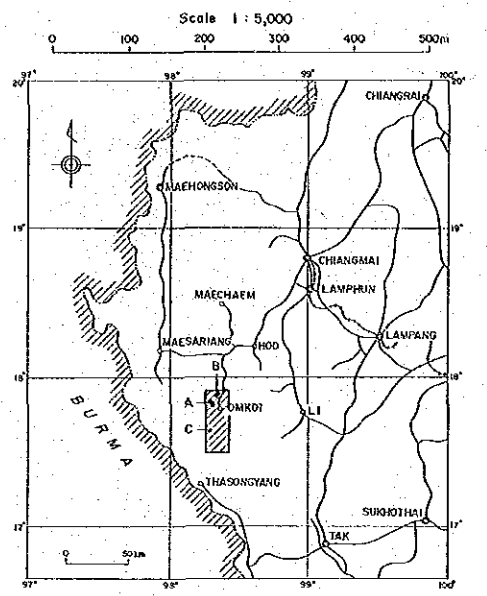
A - A'



B - B'



GEOLOGICAL SURVEY OF THE OMKOI AREA, KINGDOM OF THAILAND PHASE II GEOLOGIC MAP AND PROFILES (AREA C)

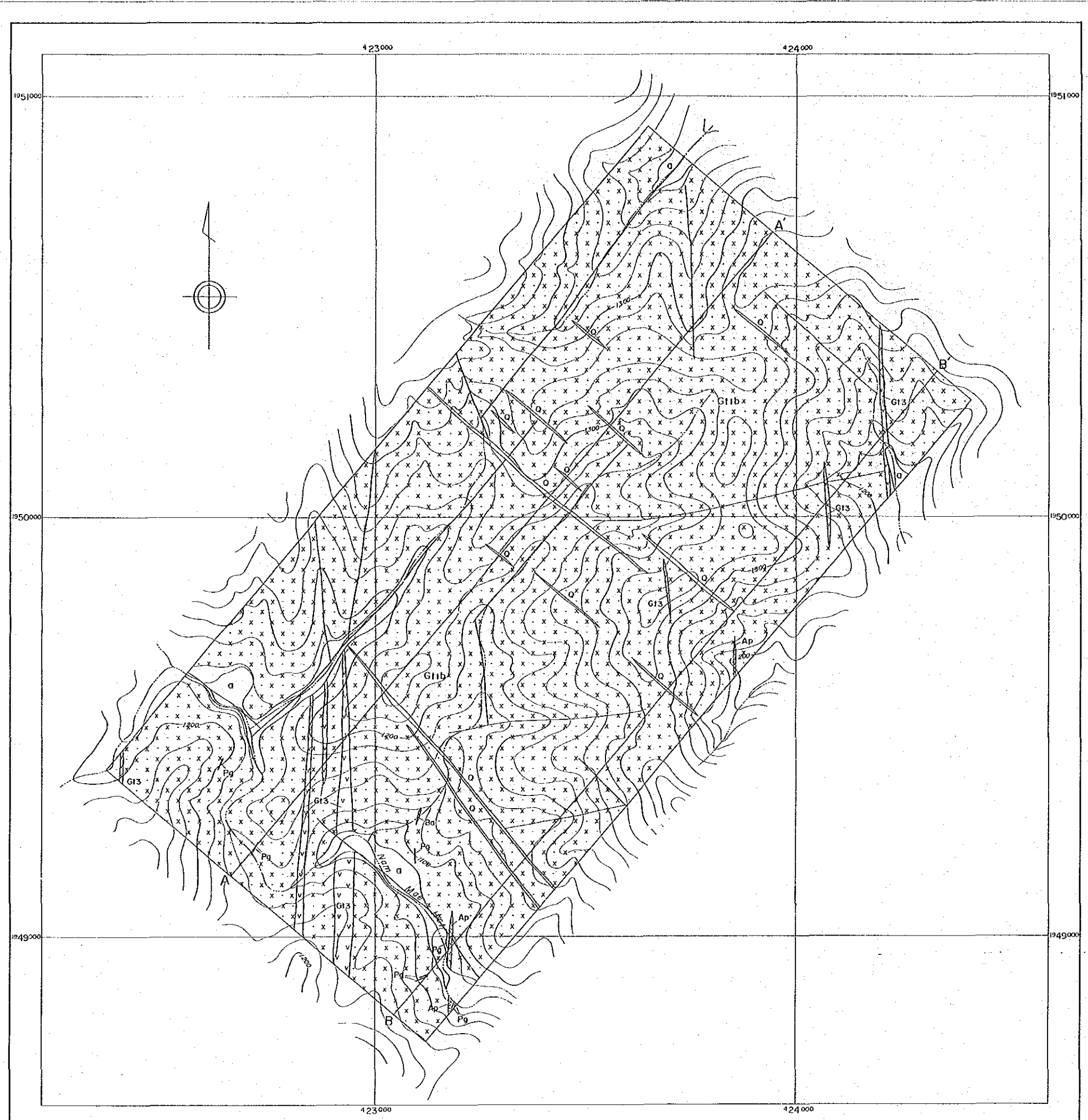


METAL MINING AGENCY OF JAPAN JAPAN INTERNATIONAL COOPERATION AGENCY April 1965

国際協力事業団 12635 図書資料室蔵書

LEGEND

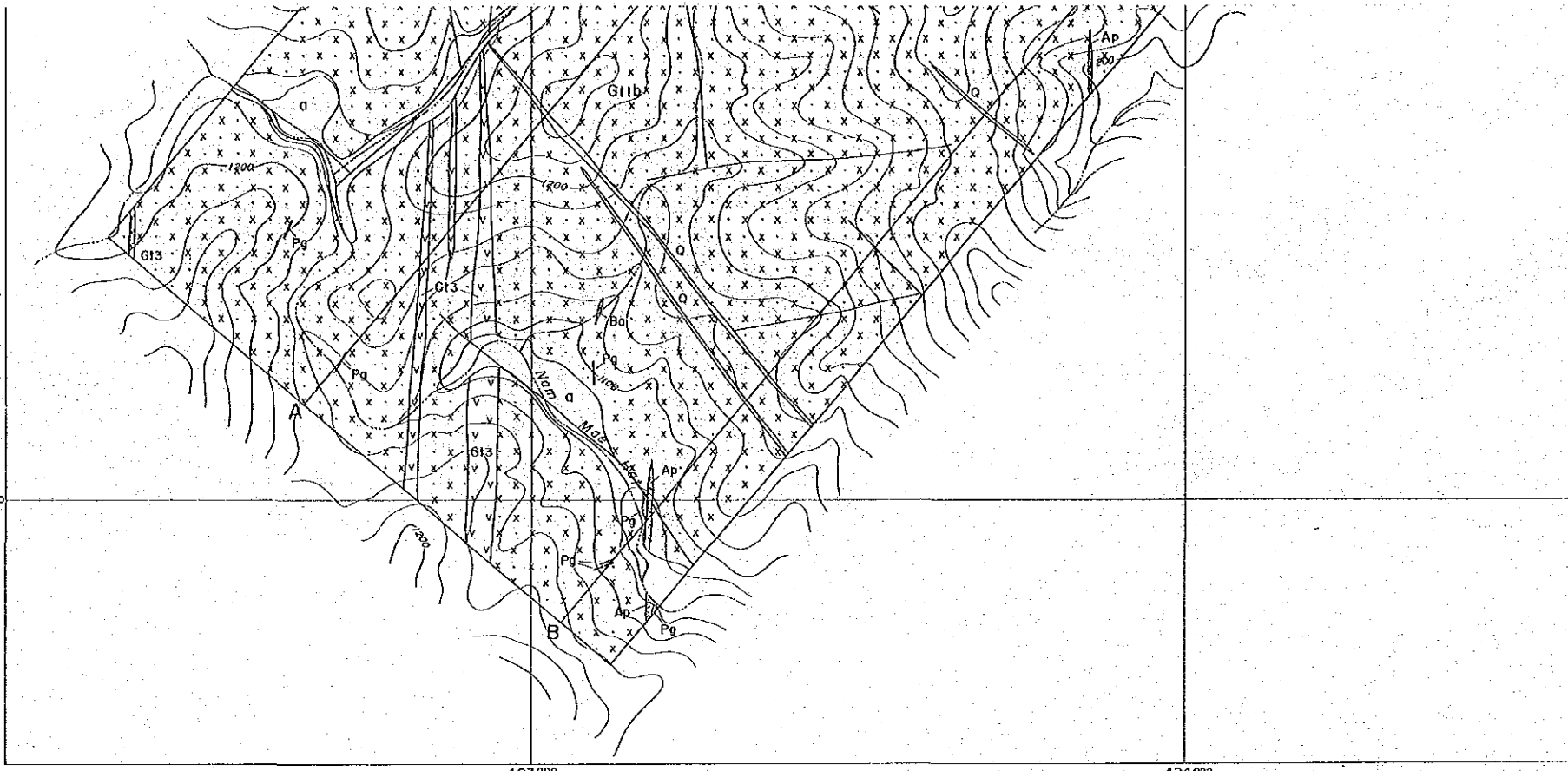
Age	Symbol	Rock facies
Quaternary	□	a Gravel and sand
Triassic	▨	Q Quartz vein
	▩	Pg Pegmatite vein
	▧	Ba Basalt dike
	▦	Ap Aplite dike
	▤	G13 Fine-grained, porphyritic biotite granite
	▣	G1b Medium- to coarse-grained, foliated, porphyritic biotite granite
	—	Photo lineament



A - A'

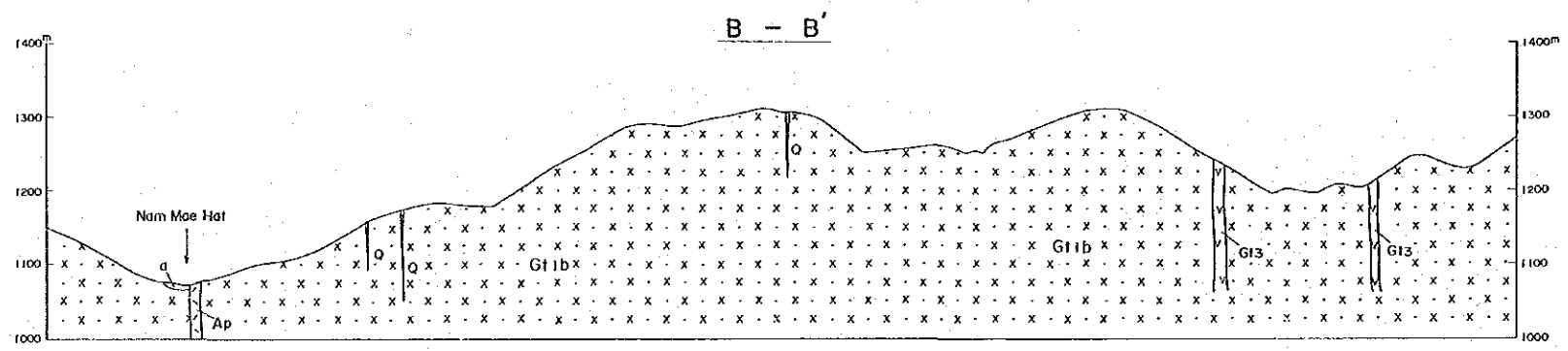
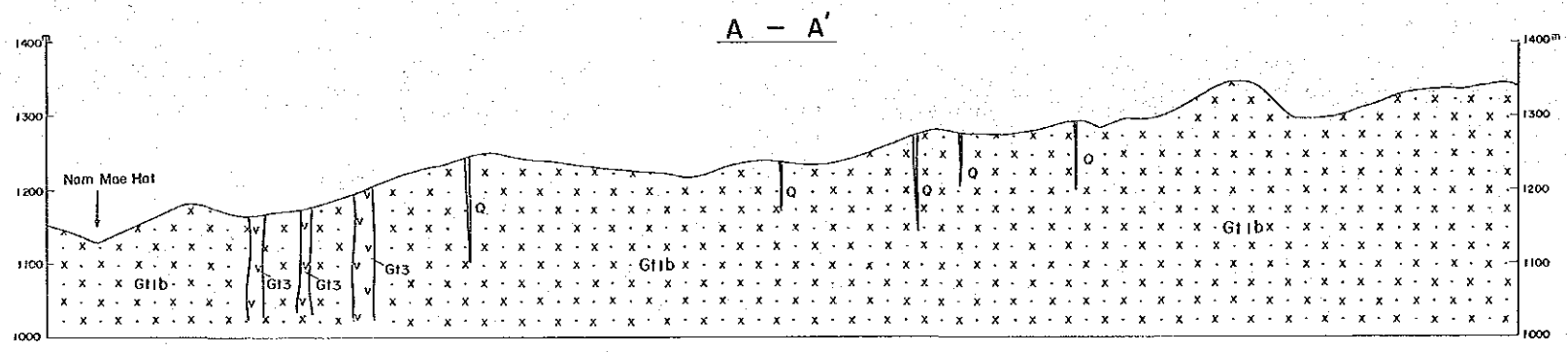
1400m

1400m

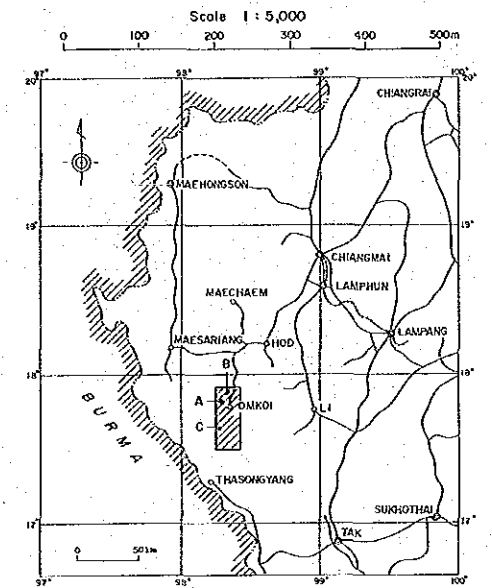


LEGEND

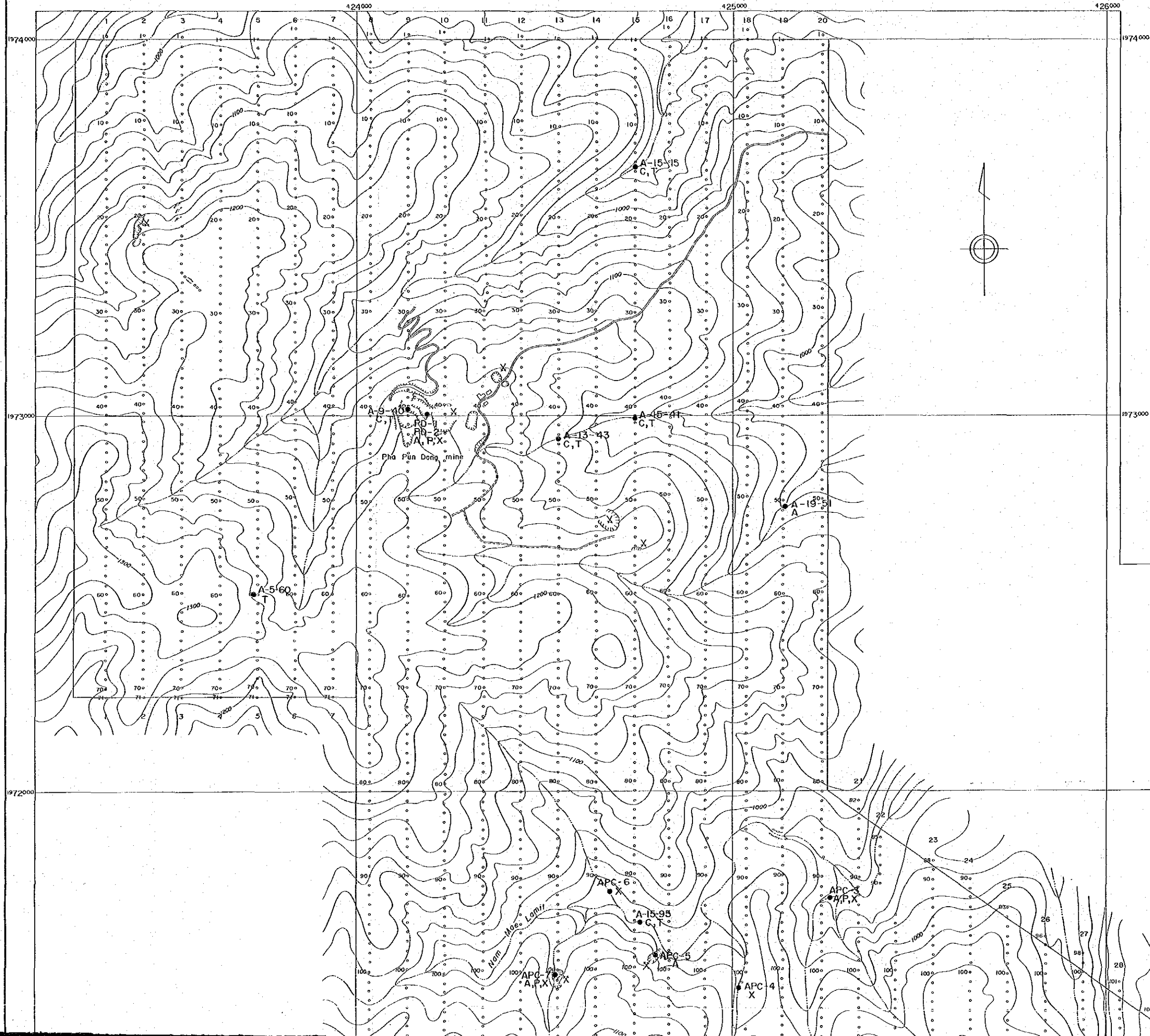
Age	Symbol	Rock facies
Quaternary	□	a Gravel and sand
	▨	Q Quartz vein
Triassic	▨	Pg Pegmatite vein
	▨	Ba Basalt dike
	▨	Ap Aplite dike
	▨	G13 Fine-grained, porphyritic biotite granite
	▨	G1b Medium- to coarse-grained, foliated, porphyritic biotite granite
	—	Photo. lineament



GEOLOGICAL SURVEY
OF
THE OMKOI AREA, KINGDOM OF THAILAND
PHASE II
LOCATION MAP OF ROCK, ORE AND
GEOCHEMICAL SOIL SAMPLES (AREA A)

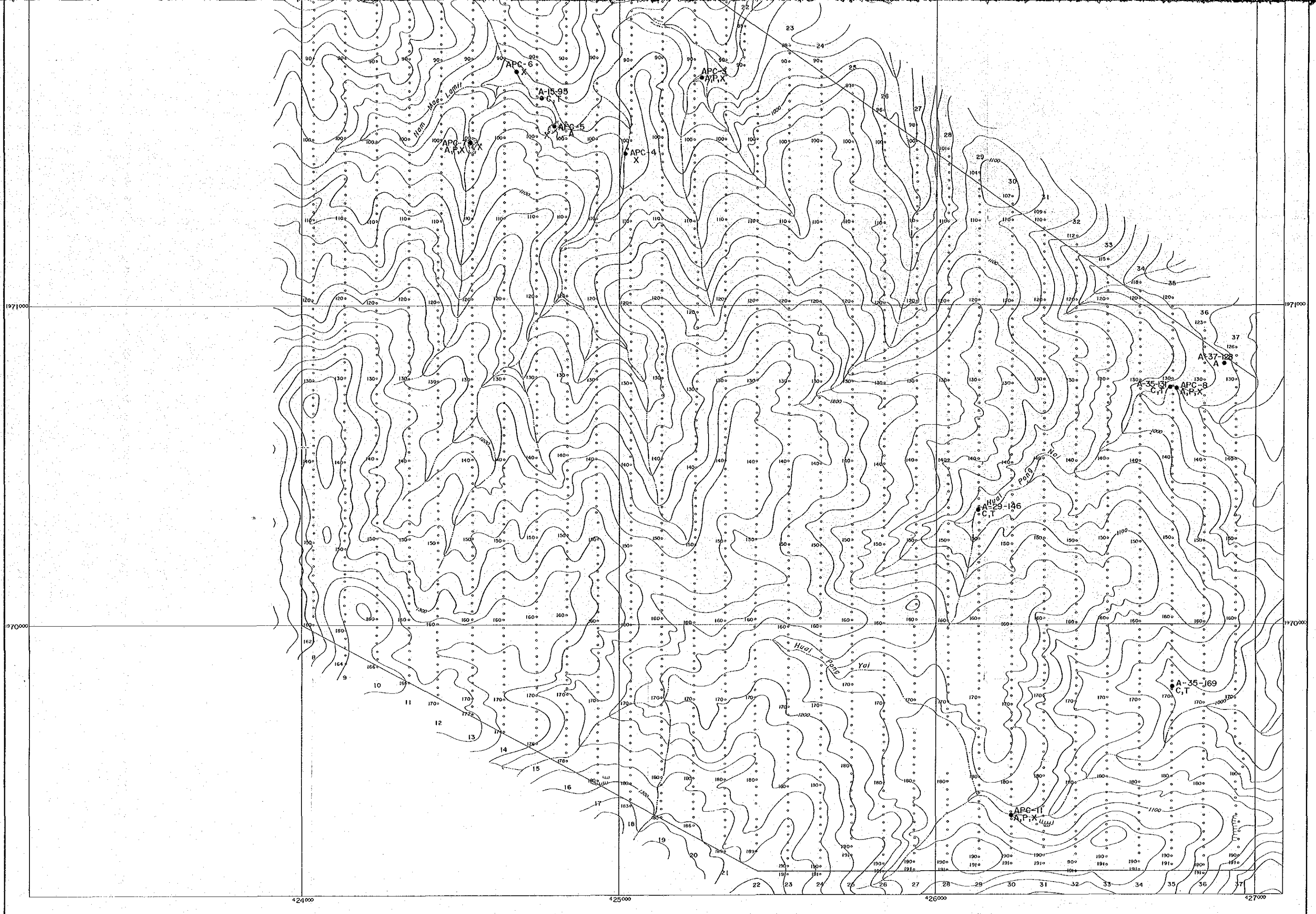


METAL MINING AGENCY OF JAPAN
JAPAN INTERNATIONAL COOPERATION AGENCY
国際協力事業団
12635
図書資料室蔵書
April 1985

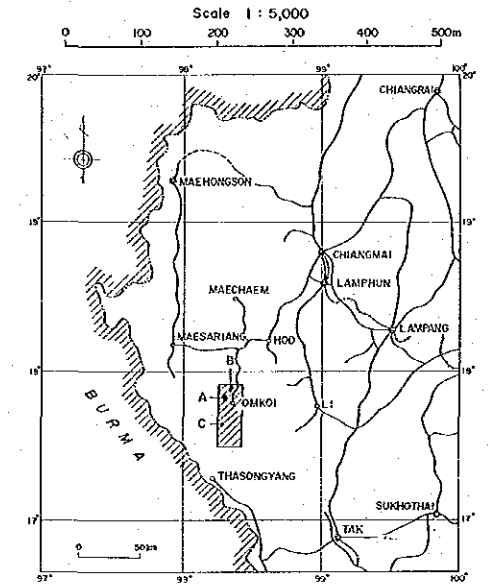


LEGEND

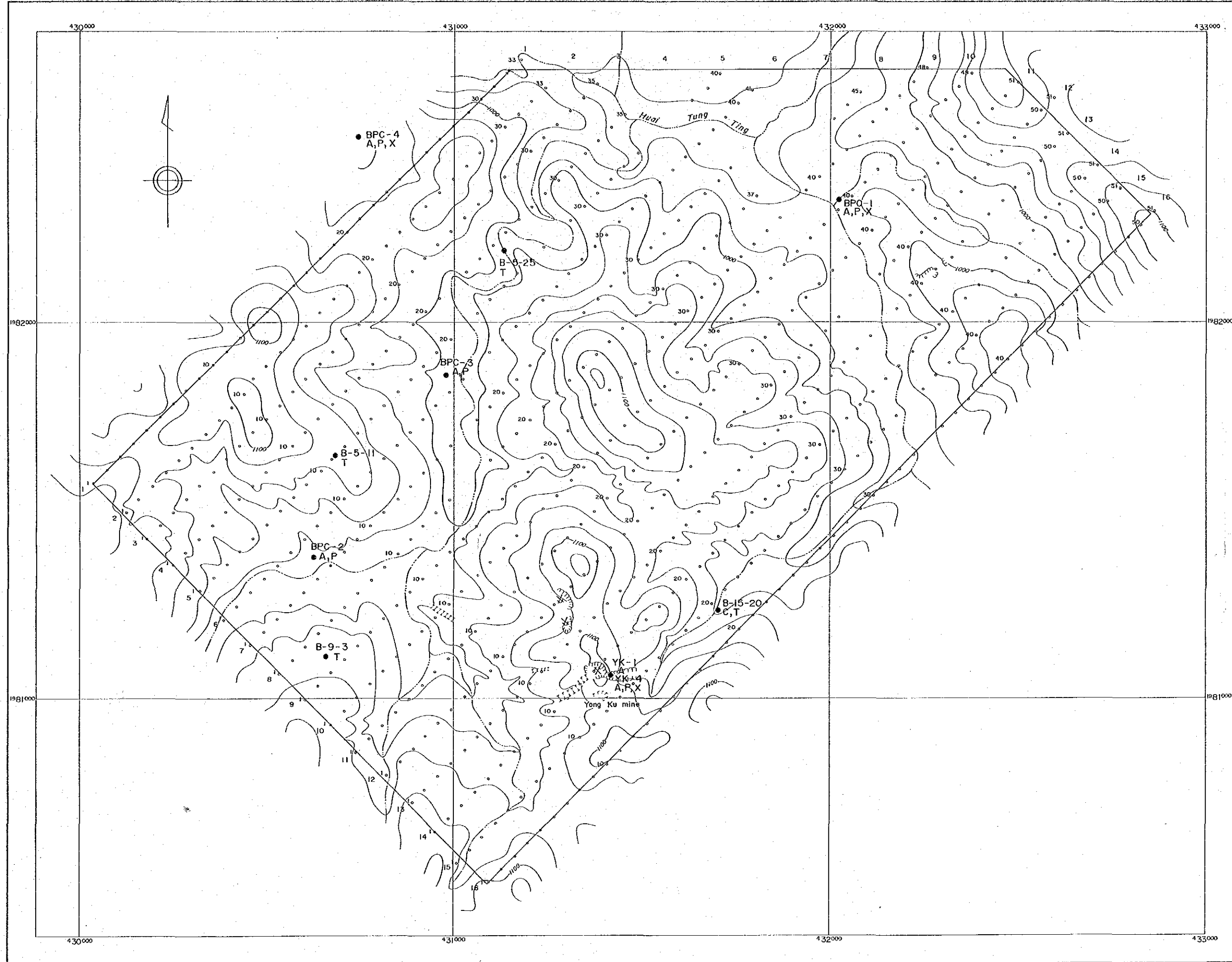
- Rock and ore sample
 - A ; Ore assaying
 - C ; Whole-rock chemical analysis
 - P ; Polished thin section
 - T ; Thin section
 - X ; X-ray diffraction
 - Geochemical soil sample
- Numbering system :
- A - 11 - 30
(Area) (Line no.) (Point no.)



GEOLOGICAL SURVEY
OF
THE OMKOI AREA, KINGDOM OF THAILAND
PHASE II
LOCATION MAP OF ROCK, ORE AND
GEOCHEMICAL SOIL SAMPLES (AREA B)

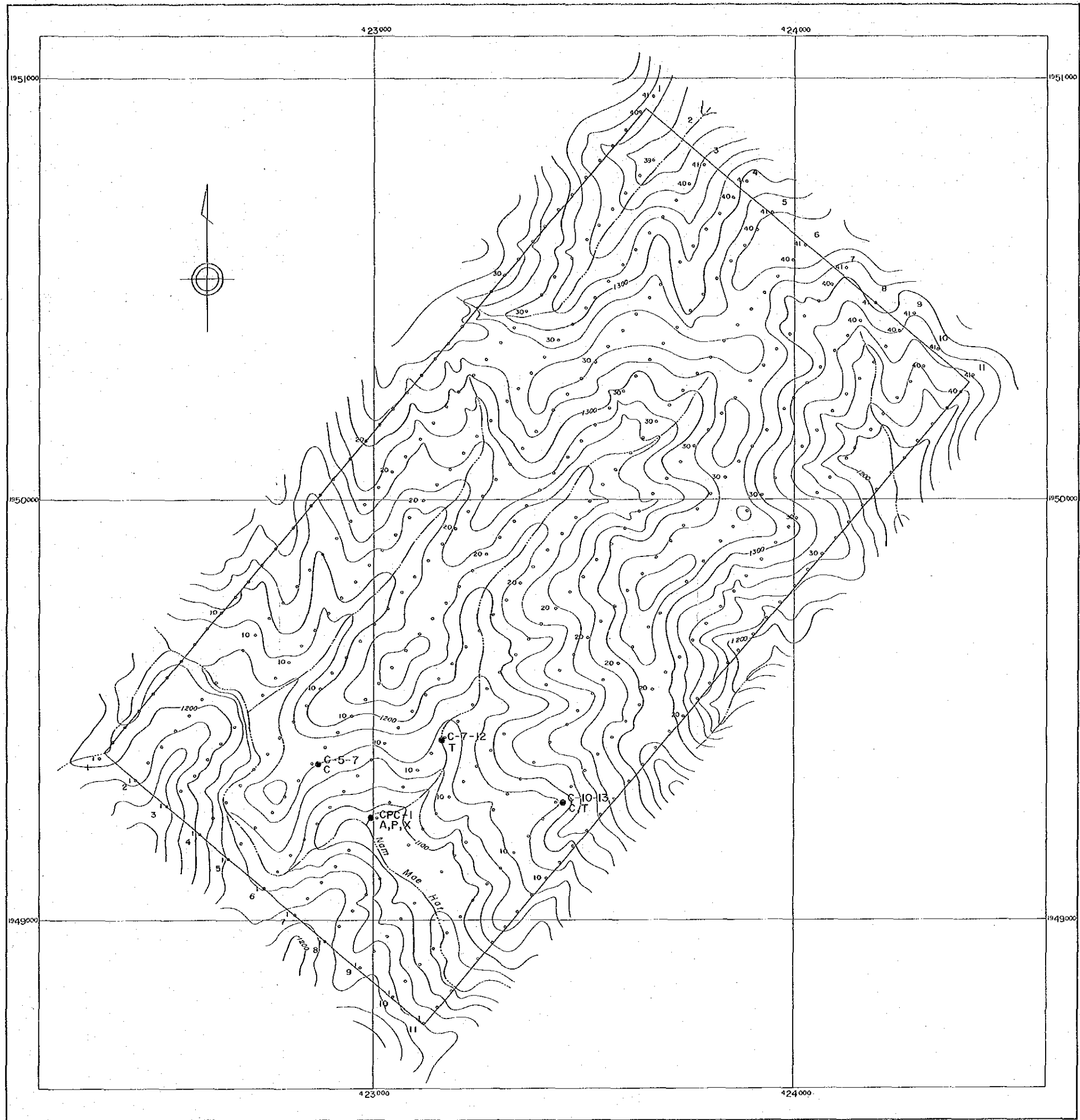


METAL MINING AGENCY OF JAPAN 国際協力事業団
JAPAN INTERNATIONAL COOPERATION AGENCY 12635
April 1985 図資資料室蔵書



LEGEND

- Rock and ore sample
 - A; Ore assaying
 - C; Whole-rock chemical analysis
 - P; Polished thin section
 - T; Thin section
 - X; X-ray diffraction
- Geochemical soil sample
Numbering system :
B - 11 - 30
(Area) (Line no.) (Point no.)



PL. 6

GEOLOGICAL SURVEY
OF
THE OMKOI AREA, KINGDOM OF THAILAND
PHASE II

LOCATION MAP OF ROCK, ORE AND
GEOCHEMICAL SOIL SAMPLES (AREA C)

Scale 1 : 5,000

METAL MINING AGENCY OF JAPAN
JAPAN INTERNATIONAL COOPERATION AGENCY

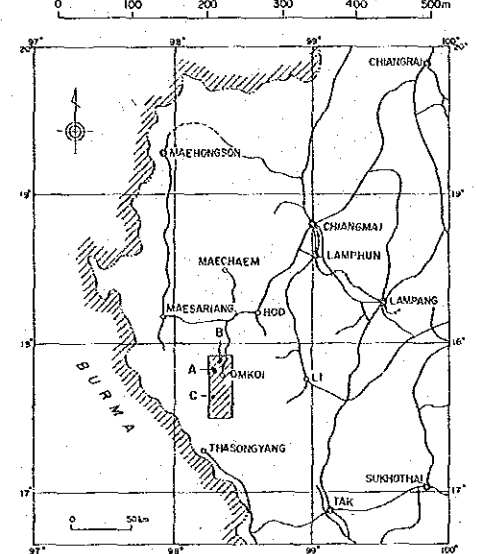
April 1985

国際協力事業団
12635
図書資料室蔵書

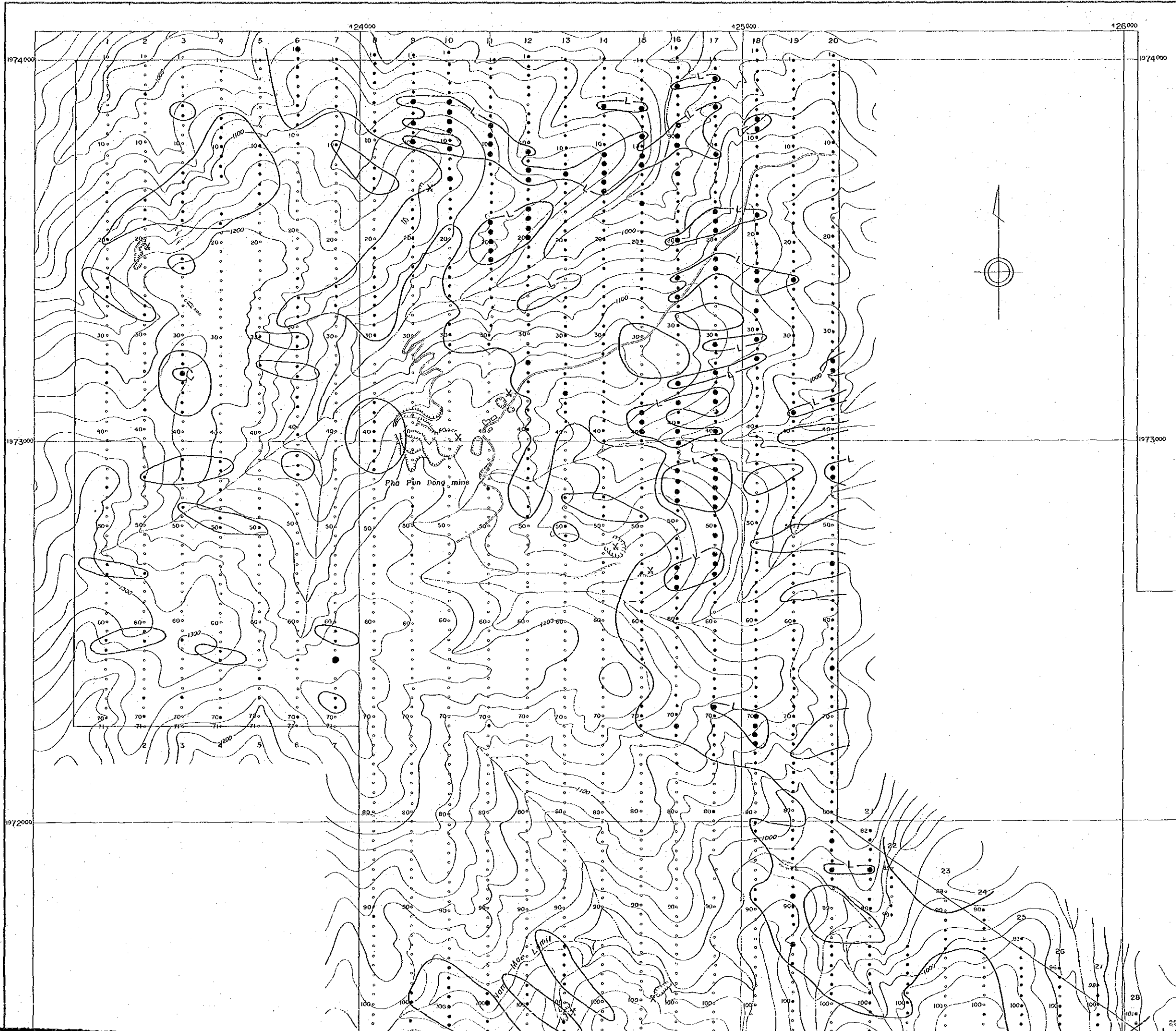
- LEGEND
- Rock and ore sample
 - A; Ore assaying
 - C; Whole-rock chemical analysis
 - P; Polished thin section
 - T; Thin section
 - X; X-ray diffraction
 - Geochemical soil sample
- Numbering system :
- C - 11 - 30
- (Area) (Line no) (Point no)

GEOLOGICAL SURVEY
OF
THE OMKOI AREA, KINGDOM OF THAILAND
PHASE II
Nb CONTENT DISTRIBUTION MAP
(AREA A)

Scale 1 : 5,000



METAL MINING AGENCY OF JAPAN
JAPAN INTERNATIONAL COOPERATION AGENCY
12635
April 1965
国際協力事業団
図書資料室蔵書



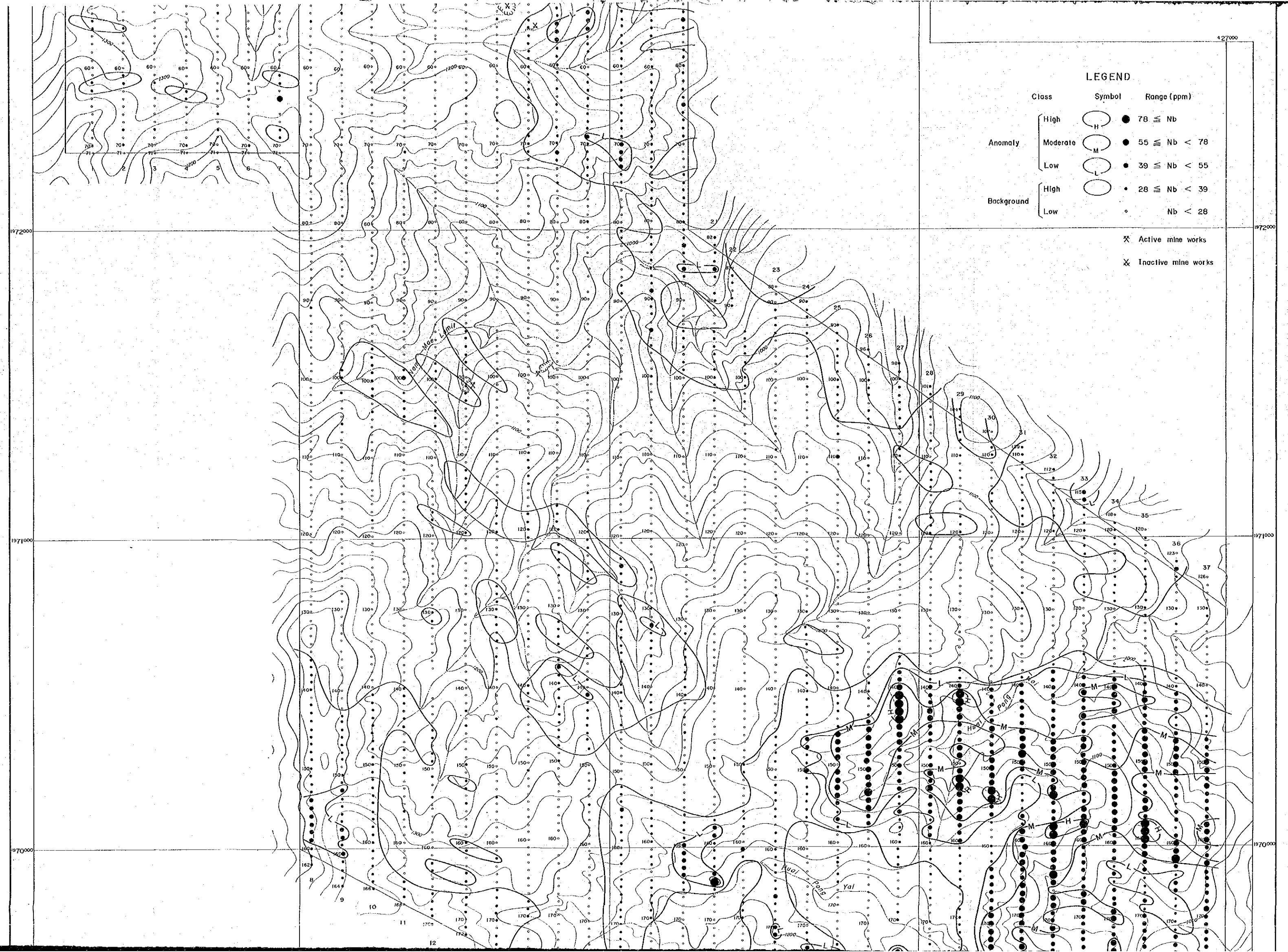
LEGEND

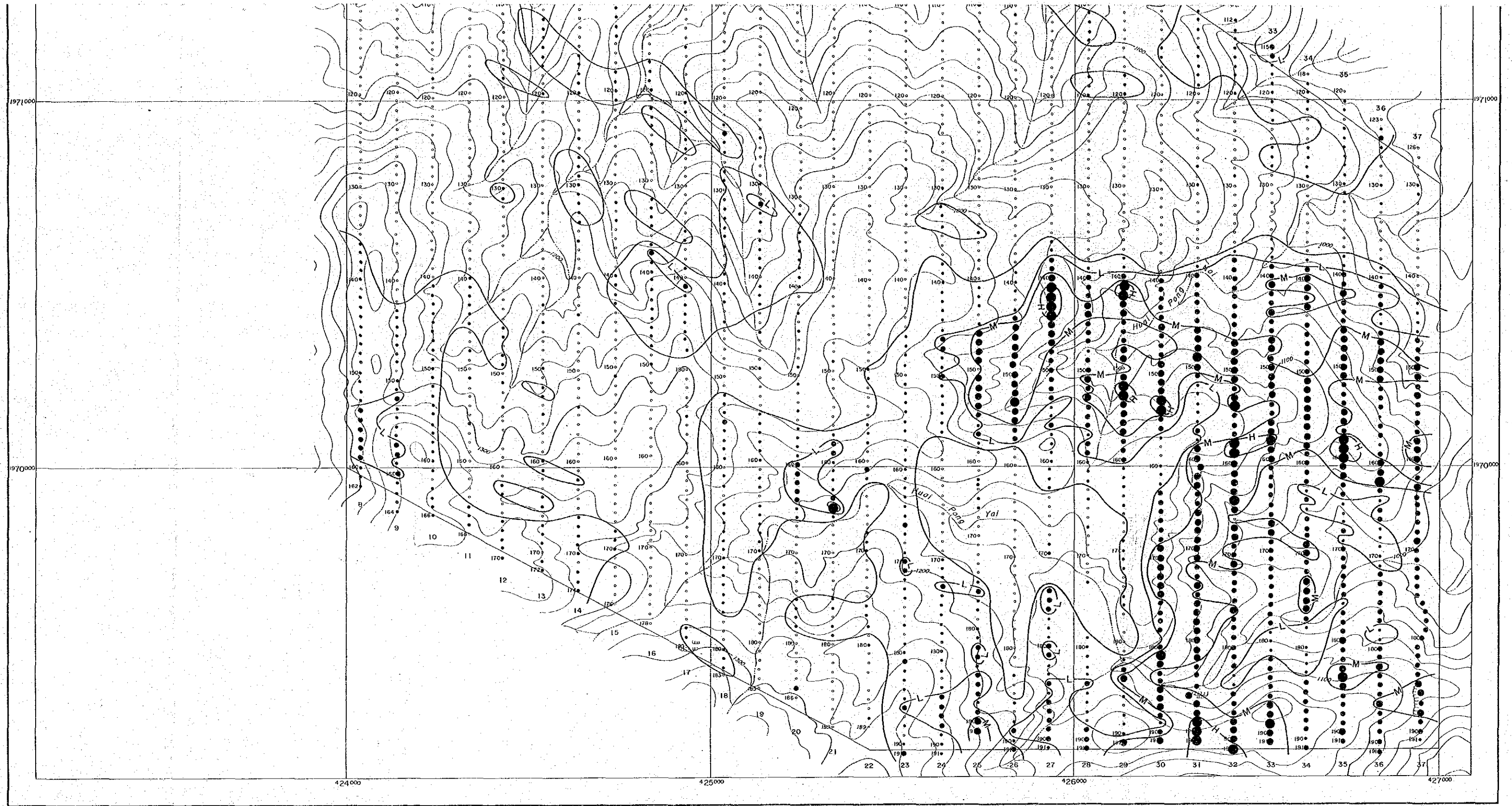
Class	Symbol	Range (ppm)
Anomaly	High (H)	78 ≧ Nb
	Moderate (M)	55 ≧ Nb < 78
	Low (L)	39 ≧ Nb < 55
Background	High	28 ≧ Nb < 39
	Low	Nb < 28
		Active mine works
		Inactive mine works

LEGEND

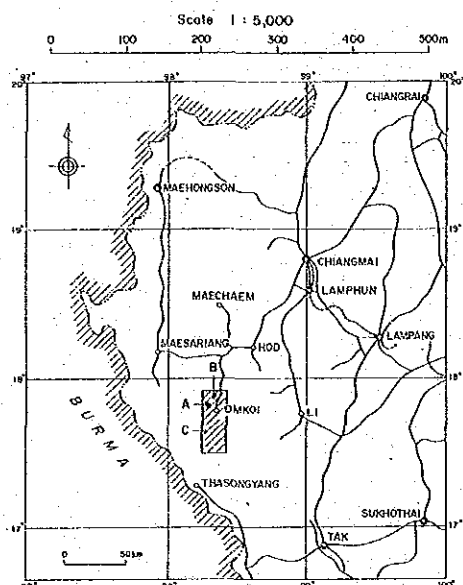
Class	Symbol	Range (ppm)
Anomaly	High (H)	78 ≤ Nb
	Moderate (M)	55 ≤ Nb < 78
	Low (L)	39 ≤ Nb < 55
Background	High (O)	28 ≤ Nb < 39
	Low (o)	Nb < 28

- ⊗ Active mine works
- ⊗ Inactive mine works

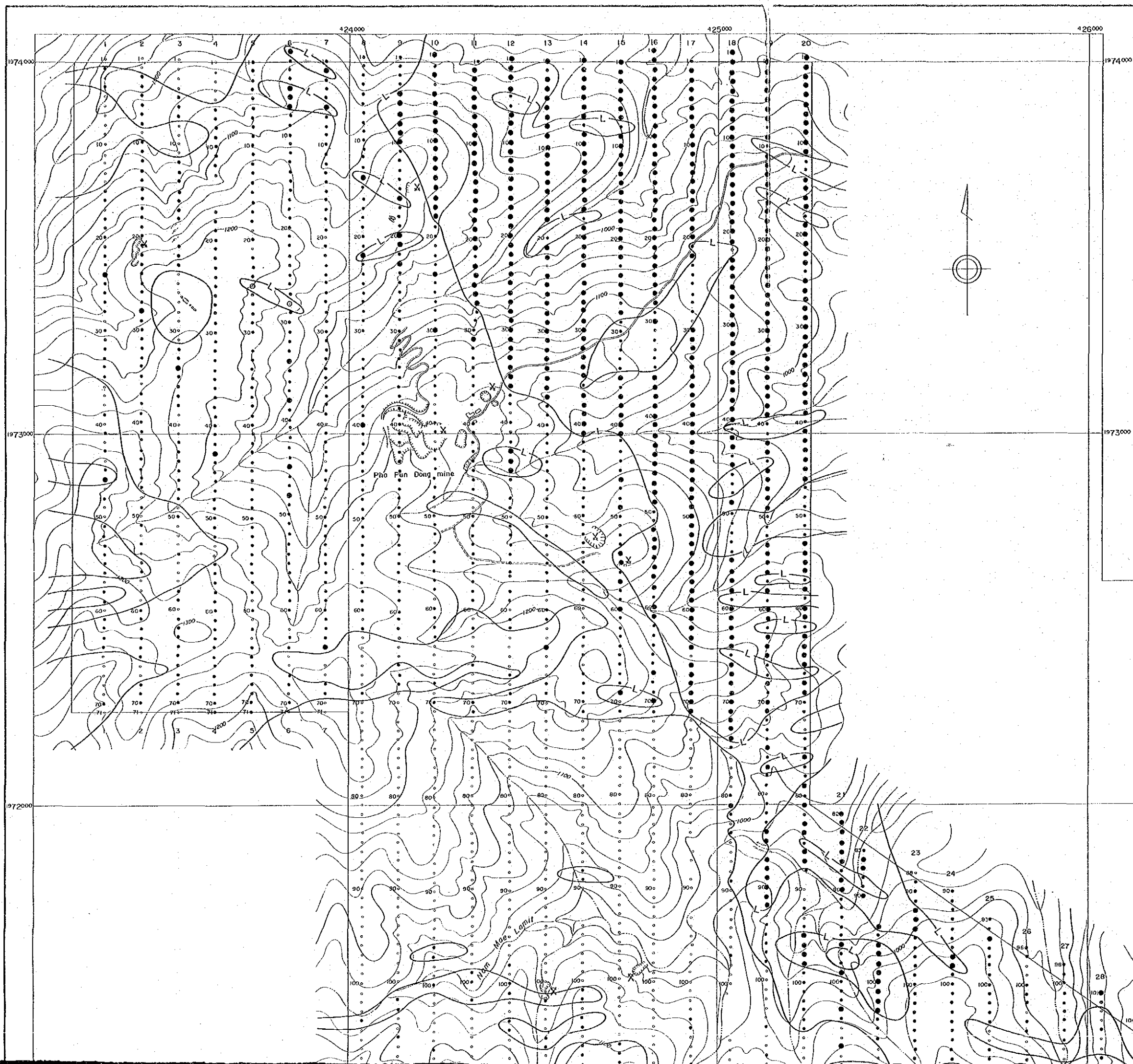




GEOLOGICAL SURVEY
OF
THE OMKOI AREA, KINGDOM OF THAILAND
PHASE II
Ta CONTENT DISTRIBUTION MAP
(AREA A)



METAL MINING AGENCY OF JAPAN 国際協力事業団
JAPAN INTERNATIONAL COOPERATION AGENCY 12635
April 1985 図書資料室蔵書



LEGEND

Class	Symbol	Range (ppm)
Anomaly	High (H)	● 15 ≧ Ta
	Moderate (M)	● 9 ≧ Ta < 15
	Low (L)	● 5 ≧ Ta < 9
Background	High (○)	• 3 ≧ Ta < 5
	Low (○)	○ Ta < 3

X Active mine works
X Inactive mine works

LEGEND

Class	Symbol	Range (ppm)
Anomaly	High (H)	15 \geq Ta
	Moderate (M)	9 \geq Ta < 15
	Low (L)	5 \geq Ta < 9
Background	High	3 \geq Ta < 5
	Low	Ta < 3

X Active mine works
 X Inactive mine works

1972000

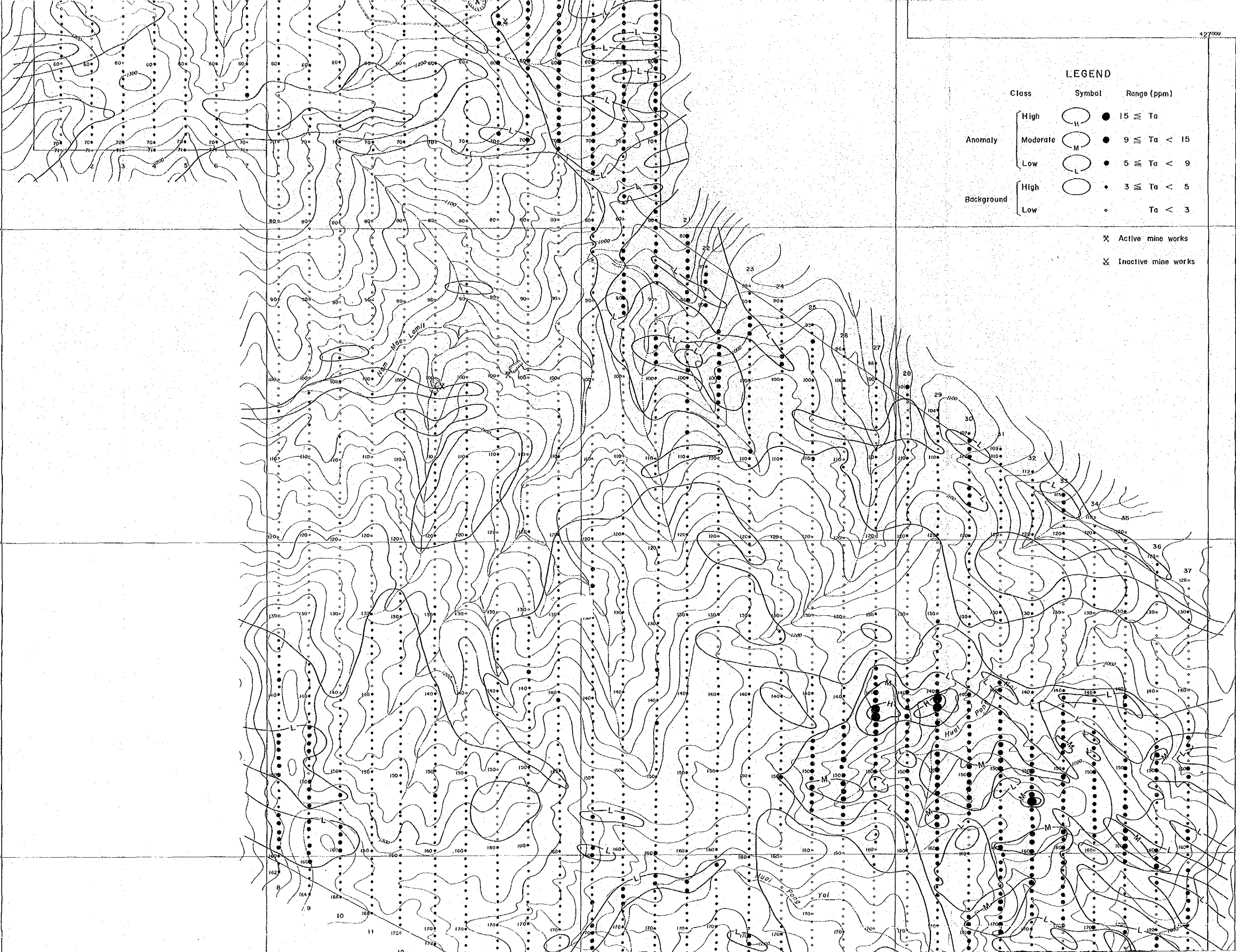
1972000

1971000

1971000

1970000

1970000



x Inactive mine works

