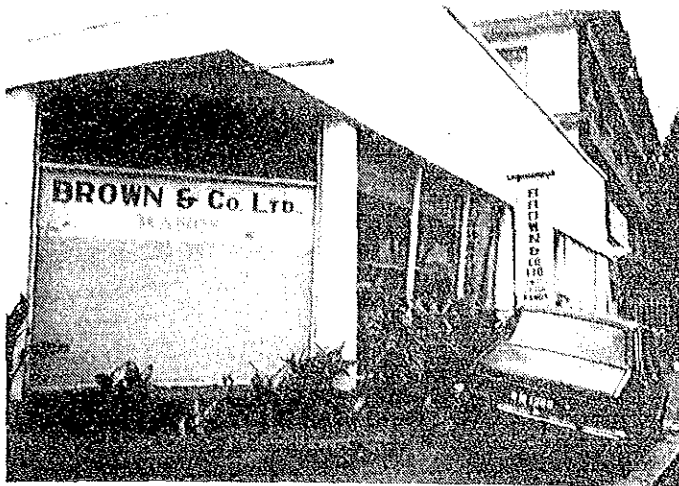
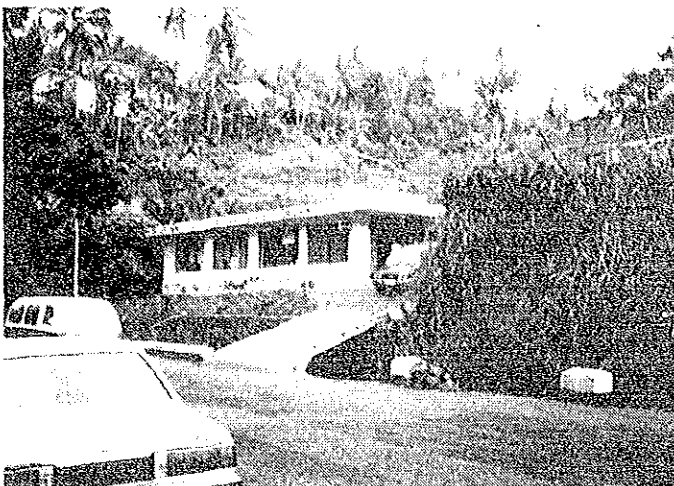


・ Browns Co.Ltd.キャンディ支店



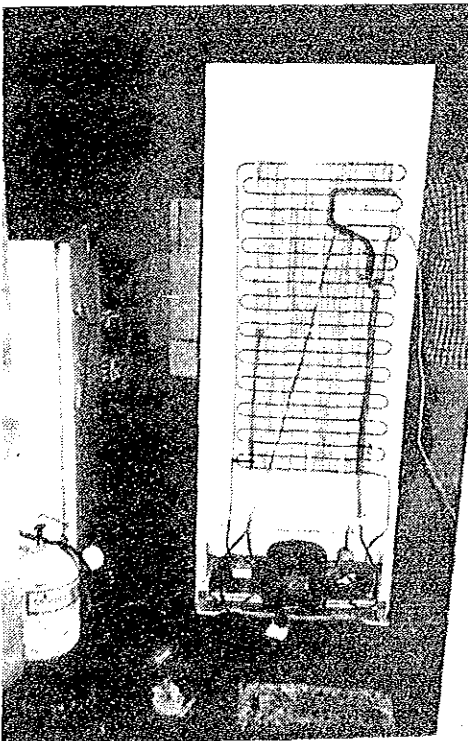
Browns Co.Ltd.キャンディ支店

主な販売、修理は、電気の制御盤・機械部品
・鉄鋼製作品を扱っている。コロンボコマー
シャルと同様紅茶工場の機器修理が主である。



USHA Agent Co.Ltd.

冷蔵庫・冷凍庫の販売、修理が専門の店であ
る。従業員は3人で行なっている。修理の技
術水準は高く、現地製放熱器やデンマーク製
膨脹弁の取替え修理を行なっている。

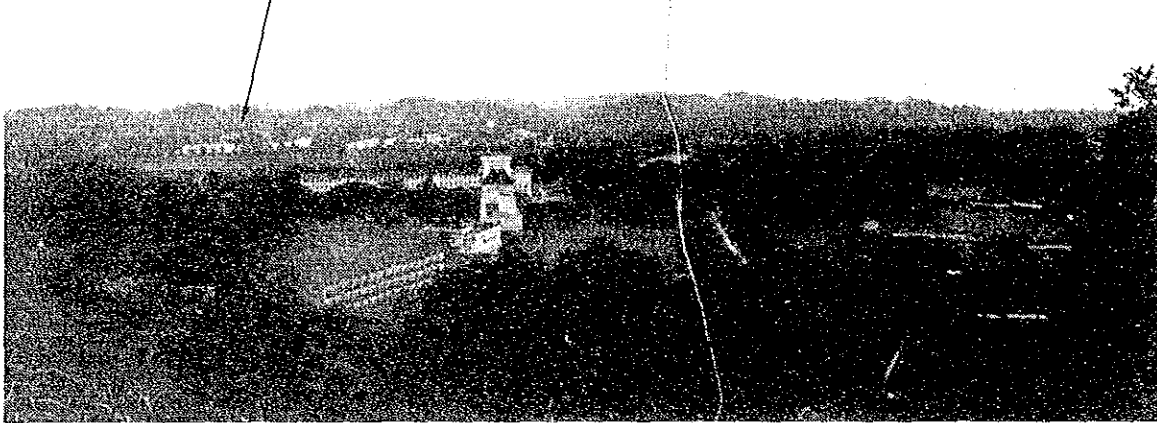


University of Peradeniya (ペラデニヤ大学)

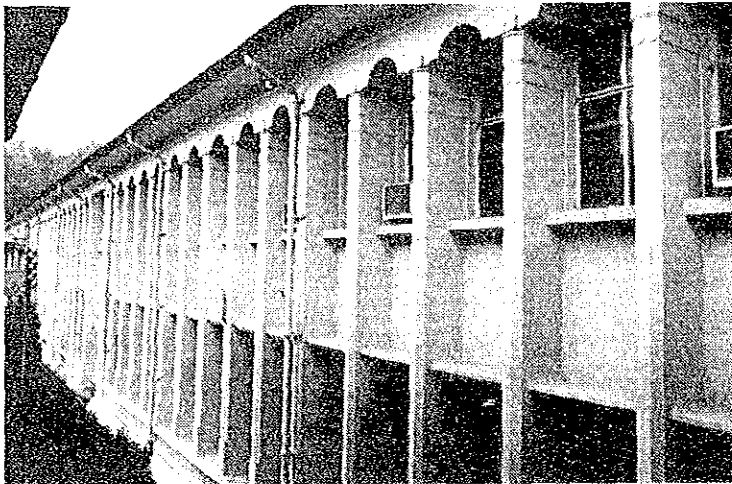
セイロン大学ペラデニヤキャンパスとして1924年に設立された。スリランカ国においてはコロンボ大学以上に施設・設備の整った由緒ある大学である。

現在文学部、理学部、獣医学部、工学部、農学部、医科・歯科学部の6学部を有し、1981/1982年の全学部の学生数は5,159人を数える。

工学部



大学本部及び文学部棟



理学部棟



農学部実験講義棟

資料編 III

資料編 III

資料目次

1. 1985, 1986, 1987, 1990年の産業別総生産量
2. 1970年貨幣価値を基準とした実質成長率
3. 1970-1985年の余裕金および投資
4. 1970年の貨幣価値を基準とした1970-1985年のGDPの推移
5. 産業別就業人口
6. 1978-1985年の金融収支
7. 1984-1988年の政府財政支出の配分
8. 年度別歳出入
9. 留保及び投資実績
10. 1985年度以降の輸出入予測
11. 米の高収量品種作付面積
12. 米の作付面積、単収及び生産量
13. 米の作期別平均単収
14. その他輸出農産物の輸出動向
15. 砂糖の生産量及び輸入量
16. 主要農産物の輸出動向
17. 主要農産物の輸出動向
18. 乾燥地帯/中間地帯における可耕地
19. 土地利用内訳
20. 作物別作付面積及び生産量(1982-83)
21. 米の作付面積/単収/生産量
22. 米の需要予測
23. 米を除く主要作物の作付面積
24. スリランカ国側の施設・機材要請内容
25. 助成金付食用作物の生産量

26. その他畑作物の作付面積
27. 研究機関別の研究物数・研究支出額('83)
28. 農業局所属研究所の職員配置内訳
29. 1983年度農作者別研究費の支出内訳
30. 米新品種の血統一覧
31. 食用豆及び雑穀の遺伝資源収集状況
32. 豆類及び雑穀の収量試験
33. トウモロコシ在来種8品種の収量及び栽培学的データ
34. 豆類及び雑穀の共同試験計画に参加している試験所
35. 根茎作物の個体件数
36. イネ遺伝資源の評価
37. 雑穀及び豆の改良品種
38. 稲栽培品種(1984-85)の実態
39. 遺伝資源収集及び評価活動の進歩
40. 1986-1990年政府財政支出計画(A)概要
41. 1986-1990年政府財政支出計画(B)部門別概要(進行中プロジェクト)
42. 1986-1990年政府財政支出計画(C)進行中プロジェクト、農業、マイ
ナー輸出作物
43. 中央農業研究所の年度別支出明細
44. 植物遺伝資源センター(PGRC)の研究活動計画
 - 遺伝資源の収集
45. 植物遺伝資源センター(PGRC)の研究活動計画
 - 遺伝資源の保存
46. 植物遺伝資源センター(PGRC)の研究活動計画
 - 遺伝資源の評価
47. 植物遺伝資源センター(PGRC)の研究活動計画
 - 作物別遺伝資源評価項目
48. 植物遺伝資源センター(PGRC)の研究活動計画
 - 組織培養

49. 植物遺伝資源センター (PGR C) の研究活動計画
 - 情報管理
50. 関連資料
 - スリランカ国における農業に関する文献名
51. 農業局所属農業研究機関の所在地
52. 9ヶ所の地域農業センターの所在地とその管轄地域
53. 1984年MAHA期に野生種の米を収集した地域
54. 1984年MAHA期に在来品種を収集した地域
55. 気候区分

資料 1. 1985, 1986, 1987, 1990年の産業別総生産量

	1985	1986	1987	1990	Average Annual growth rate 1985-1990
1. Tea growing ...	6.5	6.5	6.5	6.8	0.7
2. Rubber growing ..	1.1	1.1	1.1	1.1	0.7
3. Coconut growing ...	6.2	6.0	5.4	6.0	-0.6
4. Paddy inclusive of processing	9.1	9.4	9.7	10.1	2.1
5. Other agriculture ...	20.7	21.7	22.8	26.9	5.4
6. Total Agriculture	43.6	44.7	45.5	50.9	3.2
7. Mining and Quarrying	3.3	3.5	3.7	4.4	5.7
8. Tea, Rubber and Coconut processing	6.4	6.4	6.4	6.6	0.6
9. Other industries	15.5	16.1	16.7	18.8	4.0
10. Total Industries	21.9	22.5	23.1	25.4	3.1
11. Construction	11.2	11.7	12.2	13.7	4.1
12. Services	67.3	71.0	74.9	88.6	5.7
13. GDP at constant factor cost prices	147.3	153.4	159.4	183.0	4.4

資料 2. 1970年貨幣価値を基準とした実質成長率

	1977	1978	1979	1980	1981	1982	1983	1984	1985
1. Agriculture, Forestry and Fishing	10.4	5.4	2.0	3.1	6.9	2.6	5.0	-0.2	8.4
1.1 Agriculture	11.4	5.0	1.5	2.6	6.6	2.5	5.3	2.2	
1.1.1 Tea	6.1	-4.3	3.5	-7.5	10.0	-10.7	-4.5	10.2	
1.1.2 Rubber	-8.2	5.6	-0.9	-13.0	-6.7	0.6	12.1	2.0	
1.1.3 Coconut	-7.0	1.5	6.4	-11.0	11.5	11.3	8.4	-14.3	
1.1.4 Paddy	3.7	12.7	1.4	11.9	3.6	-3.4	15.2	-2.4	
1.1.5 Other	9.2	0.7	0.2	4.7	8.0	6.7	6.2	7.2	
1.2 Forestry	-6.5	8.4	7.1	9.0	3.9	3.7	6.2	3.0	
1.3 Fishing	5.3	12.3	8.0	9.2	15.2	2.9	1.8	-35.7	
2. Mining and Quarrying	-9.8	20.2	5.3	4.9	4.2	4.1	7.8	1.5	5.0
3. Manufacturing	9.9	7.8	4.6	0.8	5.2	4.8	0.8	12.3	4.7
3.1 Export Processing	-4.3	2.1	4.4	-9.8	7.6	-5.3	-4.6	9.9	5.2
3.2 Factory Industry	1.1	11.0	4.0	5.0	4.0	8.9	2.0	15.0	
3.3 Small Industry	2.2	13.2	9.8	0.0	5.1	10.1	4.0	4.2	4.5
3.4 Other	4.4	5.9	4.0	28.5	4.2	9.8	2.6	3.1	
4. Construction	-9.6	28.3	20.9	11.0	-3.0	-2.0	1.0	-0.1	0.5
5. Electricity Gas Water and Sanitary Services	7.4	20.6	20.2	10.0	12.0	9.8	6.6	6.6	
6. Transport, Storage and Communication	5.1	7.3	8.8	7.1	6.5	6.2	4.5	10.2	
7. Wholesale and Retail Trade	2.4	8.9	8.7	8.4	4.8	6.0	5.3	6.2	
7.1 Imports	28.0	36.8	23.1	14.0	2.0	2.1	1.9	2.0	
7.2 Exports	-7.4	5.7	1.1	0.0	2.0	9.8	-2.6	11.6	
7.3 Domestic	0.6	2.2	6.1	8.9	7.0	6.5	10.5	9.0	4.0
8. Banking Insurance and Real Estate	19.9	7.8	10.1	14.9	14.9	11.9	21.5	11.0	
9. Ownership of Dwellings	1.7	5.1	3.8	6.0	5.5	5.5	2.0	2.1	
10. Public Administration and Defence	4.1	8.0	6.0	6.0	4.0	10.5	30.6	10.0	
11. Services (n.e.s.)	7.0	5.4	7.5	8.2	8.0	7.0	-0.3	1.0	
12. G.D.P.	4.2	8.2	6.3	5.8	5.8	5.1	5.0	5.1	5.1

Sources : Public Investment 1986 - 1990
 National Planning Division
 Ministry of Finance and Planning
 May 1986

資料 3. 1970-1985年の余裕金および投資

				Annual Average				Annual Average		
				1970	1977	1970-1977	1978	1984	1985	1978-1985
Gross Domestic Investment	Rs. Million	2589	5259	3523	8554	38162	41364	26974
National Savings	Rs. Million	1930	6539	2799	6622	31644	26094	16209
Percentages of G.D.P. at Current Market Prices.										
Gross Domestic Investment	18.9	14.4	16.0	20.0	20.0	25.7	27.3
Private Investment	10.7	7.2	8.3	8.1	10.2	10.8	11.0
Public Investment	8.2	7.2	7.7	11.9	14.8	14.9	16.3
Of which Budgetary	-	-	-	10.9	13.5	13.6	14.0
Financed by-										
Foreign Savings	4.8	-3.6	3.3	4.5	4.3	9.5	10.5
National Savings	14.1	18.0	12.7	15.5	20.7	16.2	16.8
Private	-	-	-	12.1	14.7	13.7	14.1
Public	-	-	-	3.4	6.0	2.6	2.7
Of which Budgetary	-	-	-	2.4	5.6	1.8	1.6

Sources : Public Investment 1986 - 1990
National Planning Division
Ministry of Finance and Planning
May 1986

資料 4. 1970年の貨幣価値を基準とした1970-1985年のGDPの推移

	Values Rs. Million				Average Rate of Growth		Contribution to Change in GDP		Percentage Shares of increase -	
	1970	1977	1978	1985	1971-77	1978-85	1971-77	1978-85	1971-77	1978-85
GDP	13187	16078	17401	25383	2.9	5.87	2891	9305	100	100
GDP per Capita	1054	1153	1226	1592	1.3	4.12	99			
Value Added in Agriculture	3732	4299	4532	5840	2.1	3.90	567	1541	19.8	16.56
of which										
(a) Tea, Rubber & Coconut	1191	1052	1111	1217	-1.7	1.84	-139	165	-4.8	1.77
(b) Paddy & Other	2541	3247	3421	4623	3.5	4.52	706	1376	24.4	14.79
Mining & Quarrying	95	515	619	820	27.1	5.99	420	305	14.5	3.28
Manufacturing	2193	2357	2541	3513	1.0	5.12	160	1156	5.5	12.42
of Which										
Industries other than Tea, Rubber and Coconut Processing	1304	1534	1701	2584	2.3	6.74	230	1050	7.9	11.28
Construction	744	619	794	1020	-2.8	6.44	-125	401	-4.3	4.31
Services	6419	8288	8915	14190	3.7	6.95	1869	5902	64.6	63.43

Source, Annual Reports of the Central Bank.
Public Investment 1986 -1990
National Planning Division
Ministry of Finance and Planning
May 1986

資料 5. 産業別就業人口

Socio-Economic Survey 1980/81

Industry (Major Division)	Number (Thousands)			Percentage		
	Total	Male	Female	Total	Male	Female
Total employed	4,737.7	3,555.9	1,181.8	100.0	75.0	24.9
Agriculture, hunting, forestry and fishing	2,172.7	1,570.4	602.3	45.8	33.1	12.7
Mining and quarrying	63.7	58.7	4.9	1.3	1.2	0.1
Manufacturing	568.2	381.4	186.8	12.0	8.0	3.9
Electricity, gas and water	18.0	16.2	1.9	0.4	0.3	-
Construction	229.1	216.3	12.8	4.8	4.6	0.3
Wholesale and retail trade and restaurants and hotels	490.8	405.6	85.2	10.4	8.6	1.8
Transport, storage and communications	197.4	189.1	8.3	4.2	4.0	0.2
Financing, insurance, real estate and business	52.9	38.4	14.5	1.1	0.8	0.3
Community, social and personal services	648.1	430.3	217.9	13.7	9.1	4.6
Activities not adequately defined	296.7	249.5	47.2	6.3	5.3	1.0

Source: Dept. of Census and Statistics,
Ministry of Planning Implementation
SRI LANKA, 1985

資料 6. 1978-1985年の金融収支

	1978	1979	1980	1981	1982	1983	1984	1985
Exports ...	675	795	818	903	981	993	1439	1284
Imports ...	819	1121	1596	1596	1794	1984	1864	1981
Trade Balance ...	-144	-362	-752	-693	-890	-801	-425	-697
Services ...	6	37	40	10	-16	-57	-60	-127
Receipts ...	99	149	214	261	303	320	330	325
Payments ...	93	112	174	251	319	377	390	452
Goods and Services ...	-138	-325	-718	-638	-906	-857	-485	-824
Private Transfers ...	17	37	105	172	240	256	270	265
Current Account Balance ...	-121	-288	-613	-511	-666	-602	-215	-559
Financing								
Grants ...	46	111	106	136	147	160	150	140
Direct Investment ...	1	36	33	42	58	35	35	29
Other private Long Term (Net) ...	7	7	33	66	182	-125	-29	37
Central Government (Net) ...	125	121	125	225	231	260	321	272
Short Term (Net) ...	0	0	115	8	0	0	0	0
SDR Allocations ...	0	12	12	12	0	0	0	0
Errors & Omissions ...	7	36	23	-4	24	22	35	-30
Overall Balance ...	65	35	-166	-26	-24	0	297	-111
Monetary Movements ...	-65	-35	166	26	24	0	-297	111

Sources : Public Investment 1986 - 1990
National Planning Division
Ministry of Finance and Planning
May 1986

資料 7. 1984-1988年の政府財政支出の配分

(A) Summary - All Sectors

(Rs. Million at current Prices)

	1984		1985		1986		1987		1988		1984-1988			
	T	FA	T	FA	T	FA	T	FA	T	FA	F	L	T	FA
1. Total Public Investment	20959	—	22232	—	21976	—	20477	—	20663	—	—	—	106307	—
2. Add Adjustment for Capital Transfers	340	—	378	—	411	—	399	—	387	—	—	—	1916	—
3. Total Capital Expenditure (Public Sector) of Which	21299	—	22610	—	22387	—	20876	—	21050	—	—	—	108222	—
(i) Extra Budgetary Resources	3900	—	4095	—	4320	—	4450	—	4585	—	—	—	21330	—
(ii) Non Expansionary Resources available to the Govt. Budget	18842	—	18515	—	18067	—	16426	—	16485	—	—	—	88335	—
(iii) Supplementary financing required for investment programme	13	—	—	—	—	—	—	—	—	—	—	—	1443	—
4. Total Budgetary Provision after adjustments	17399	—	18515	—	18067	—	16426	—	16485	—	—	—	86892	—
5. Sector Summary														
(i) Agriculture	9028	6628	10572	7008	9263	6103	4779	3018	2688	1490	16986	19344	36330	24245
(1) Mahaweli	6017	4900	6845	4570	5672	3979	1919	1442	734	479	11862	9325	21187	15370
(2) Other Irrigation	632	405	718	505	707	483	538	338	155	110	1080	1670	2750	1841
(3) Field & Minor Crops	859	413	1019	559	987	358	790	183	554	86	1370	2830	4200	1599
(4) Forestry & Lands	316	114	308	151	301	154	296	146	254	120	533	942	1475	685
(5) Plantations	883	587	1295	955	1209	847	864	646	806	589	1301	3756	5057	3624
(6) Animal Husbandry	122	84	174	124	188	135	195	151	23	3	378	324	702	497
(7) Fisheries	199	123	213	144	208	147	177	112	162	103	462	497	959	629
(ii) Industry	125	36	54	14	35	2	33	—	33	—	108	172	280	51
(iii) Housing, Water Supply & Urban Development	2057	460	2315	711	1440	326	1069	134	915	99	2758	5038	7796	1730
(1) Housing	584	2	592	3	583	3	583	3	583	3	600	2325	2925	14
(2) Other Construction	368	40	466	51	291	—	255	—	185	—	464	1101	1565	91
(3) Water Supply	1105	418	1257	657	566	323	231	131	147	96	1694	1612	3306	1625
(iv) Economic Overheads	4168	1955	6291	2659	7640	3585	6528	2978	5073	2189	16623	13077	29700	13366
(1) Transport	650	250	1218	145	1091	—	1217	—	1329	—	2476	3029	5505	395
(2) Power	747	657	1674	1553	2464	2398	2202	2185	1950	1933	6991	2046	9037	8726
(3) Posts & Telecom.	497	258	700	299	848	363	346	145	80	—	1766	705	2471	1065
(4) I.R.D. & Others	—	—	—	—	—	—	—	—	—	—	—	—	—	—
M/P.I.	441	327	543	421	527	417	476	370	268	226	730	1525	2255	1761
(5) Other Programmes	1348	463	1710	241	2236	407	1759	278	830	30	3327	4556	7883	1419
(6) Administrative Overheads	485	202	446	403	474	215	528	109	616	51	1333	1216	2549	979
(v) Social Overheads	962	202	1503	403	1224	215	1100	109	1105	50	2417	3477	5894	979
(1) Education	642	81	849	262	587	85	480	15	488	11	1174	1872	3046	454
(2) Health	244	96	517	85	501	76	532	60	519	5	1008	1296	2304	322
(3) Others	76	25	137	56	136	54	97	34	98	34	235	309	544	203
(vi) HD. Miscellaneous (M/F & P)	3149	53	2000	41	2000	18	2000	—	2000	11	123	11026	11149	123
(vii) New Projects (Unidentified)	—	—	956	—	1729	—	915	—	4661	—	—	—	18261	—
6. Sector Total of which	19493	9332	23681	10836	23189	10250	16426	6239	16485	3839	—	—	99274	40496
(i) On going Capital Projects	19493	9332	21259	10292	18923	9620	12707	5615	9302	3250	—	—	81684	38109
7. Recurrent Provision	28650	—	30400	—	32300	—	34000	—	36000	—	—	—	161350	—
8. 10% reduction on ongoing capital and recurrent provision 1985 & 1986	—	—	5166	—	5122	—	—	—	—	—	—	—	—	—
9. Total Capital on-going after above reduction	19493	9332	16093	10292	13801	9620	12707	5615	9302	3250	—	—	71396	38109
10. New Projects	—	—	1476	644	2679	630	2804	624	2522	589	—	—	9481	2387
(1) Approved	—	—	948	—	1587	—	915	—	4661	4661	—	—	8109	—
(2) Unidentified	—	—	—	—	—	—	—	—	—	—	—	—	—	—
(3) Total provision new Projects	—	—	2422	544	4266	630	3719	624	7183	589	—	—	17590	2387

T = Total Cost

FA = Foreign Aid

F = Foreign Cost

L = Local Cost.

Explanatory Note:

1. Allocation from 1985 onwards have been worked out on the basis of an exchange rate of US \$ 1 = Rs. 25/-. Figures from 1985 onwards are at 1984 constant prices. The Committee of Development Secretaries has decided that an overall reduction of 10% should be made on the 1985 and 1986 budgetary expenditure (capital and recurrent). The allocation of this 10% cut will be decided by the line Ministries before 31st May, 1984.

2. New Projects Provision has been made to accommodate new projects from the Plantation and Power Sector Programmes starting in 1985. Other new projects to be admitted from 1985 will be decided by the Committee of Development Secretaries taking into account the resource position after the 10% reduction is effected.

資料 8. 年度別歳出入

Fiscal Performance 1978-1985
(Rs. Million at current Prices)

	1978	1979	1980	1981	1982	1983	1984	1985
1. Current Receipts ...	10979	11816	13155	15073	15493	22806	33475	32923
2. Current Expenditure ...	9967	10887	12730	15253	18907	20654	25143	30004
3. Current A/c Surplus (+) Deficit (-) ...	1012	929	425	-180	-2414	2152	8332	2919
4. Capital Receipts ...	153	213	107	186	117	159	538	290
5. Advances A/c net out payments ...	1742	1021	3040	1488	-879	12120	2632	2014
6. Capital Expenditure net of repayment of Public Debt ...	5266	7347	12860	11757	15886	16708	19562	23575
Of which Investment ...	(4640)	(7120)	(12604)	(11500)	(15580)	(15870)	(20648)	(21919)
7. Overall surplus (+)/Deficit (-) ...	-5843	-7226	-15368	-13239	-17304	-15517	-13324	-22380
8. Financing								
8.1 Net foreign financing ...	3953	3738	6136	7602	8121	9748	9760	11600
8.2 Net domestic non bank financing ...	1717	2854	2203	1790	5508	3055	4710	6967
8.3 Administrative Borrowing ...	0	0	0	0	0	2239	820	0
8.4 Borrowing from monetary system ...	173	634	7029	3847	3675	474	-1966	3813
9. GDP at market price ...	42665	52387	66527	85005	100140	121664	152615	160893
As percentage of GDP at current market prices								
1. Current Receipts ...	25.73	22.56	19.77	17.73	16.47	18.75	21.93	20.46
2. Current Expenditure ...	23.36	20.78	19.14	17.94	18.88	16.98	16.47	18.65
3. Current A/c Surplus (+) Deficit (-) ...	2.37	1.77	.64	-21	-2.41	1.77	5.46	1.81
4. Capital Expenditure net of repayment of public debt ...	12.34	14.02	19.33	13.83	15.86	13.73	12.82	14.65
5. Overall surplus/Deficit ...	13.70	-13.79	-23.10	-15.57	-17.28	-12.75	-8.73	-13.91
6. Financing								
6.1 Net foreign financing ...	9.27	7.14	9.22	8.94	8.11	8.01	6.40	7.21
6.2 Net domestic non bank financing ...	4.02	5.45	3.31	2.11	5.50	2.51	3.09	4.33
6.3 Borrowing from monetary system41	1.21	10.57	4.53	3.67	.39	-1.29	2.37

資料 9. 留保及び投資実績

Savings And Investment 1970-1985

				Annual Average			Annual Average			
				1970	1977	1970-1977	1978	1984	1985	1978-1985
Gross Domestic Investment	Rs. Million	2589	5259	3523	8554	38162	41364	26974
National Savings	Rs. Million	1930	6539	2799	5622	31644	26094	16209
Percentages of G.D.P. at Current Market Prices.										
Gross Domestic Investment	18.9	14.4	16.0	20.0	20.0	25.7	27.3
Private Investment	10.7	7.2	8.3	8.1	10.2	10.8	11.0
Public Investment	8.2	7.2	7.7	11.9	14.8	14.9	16.3
Of which Budgetary	-	-	-	10.9	13.5	13.6	14.0
Financed by-										
Foreign Savings	4.8	-3.6	3.3	4.5	4.3	9.5	10.5
National Savings	14.1	18.0	12.7	15.5	20.7	16.2	16.8
Private	-	-	-	12.1	14.7	13.7	14.1
Public	-	-	-	3.4	6.0	2.5	2.7
Of which Budgetary	-	-	-	2.4	5.6	1.8	1.6

資料 10. 1985年度以降の輸出入予測

Exports and Imports 1985, 1986, 1987 and 1990
(SDR Million)

		1985	1986	1987	1990
(A) Exports					
1. Tea	- Volume Ml. kg.	198	200	200	206
	- Value	433.6	342.0	356.0	432.6
2. Rubber	- Vol. Ml. kg.	120	126	126	128
	- Value	93.6	98.3	95.8	112.6
3. Coconut	- Vol. Ml. Nuts	935	1075	770	960
	- Value	86.0	48.4	60.8	96.0
4. Gems	32.0	35.0	40.0	55.0
5. Petroleum Products	- Value	140.1	96.0	109.7	120.3
6. Industrial Goods	- Value	366.2	380.2	407.5	543.3
7. Minor Agricultural Products	...	75.2	83.2	96.9	129.2
8. Other Exports	...	83.6	45.1	49.6	49.6
9. Statistical discrepancy...	...	-27.0	0.0	0.0	0.0
Total Exports f.o.b.	...	1283.3	1128.2	1216.2	1538.6
(B) Imports					
1. Rice	- Vol. Th. Mt.	211	190	0	0
	- Value	39.2	28.1	0	0
2. Sugar	- Vol. Th. Mt.	388	240	225	180
	- Value	72.2	43.9	43.2	40.0
3. Wheat	- Vol. Th. Mt.	665	605	600	550
	- Value	103.7	79.9	79.2	79.2
4. Fertilizer	- Vol. Th. Mt.	434	435	462	552
	- Value	57.3	47.9	50.8	64.6
5. Petroleum i. Crude Oil	- Vol. Th. Mt.	1661	1648	1852	2043
	- Value	343.0	193.6	236.7	313.4
ii. Products	- Value	53.9	40.1	26.8	29.7
6. Other Consumer Goods	- Value	267.7	265.4	273.4	289.5
Other Intermediate Goods	- Value	541.3	561.0	587.0	668.0
8. Investment Goods	- Value	376.1	354.2	360.4	400.6
9. Unclassified	- Value	99.0	65.0	49.9	50.1
10. Statistical discrepancy	...	27.0	0	0	0
Total Imports C.I.F.	...	1980.4	1679.0	1707.4	1935.1

Sources: Public Investment 1986 - 1990
National Planning Division
Ministry of Finance and Planning
SRI LANKA, May 1986

資料 11. 米の高収量品種作付面積 (%)

Area planted in high yielding varieties (as % of total rice area)

Year	- Length of cropping season -		Total
	3-3 1/2 months (early maturing)	4-4 1/2 months (late maturing)	
1975	30	42	72
1976	30	43	73
1977	38	37	75
1978	43	40	83
1979	38	34	72
1980	49	31	80
1981	59	26	85
1982	68	30	98
1983	65	32	97

Source: Department of Agriculture, Sri Lanka
Ministry of Agricultural Development and Research
SRI LANKA, 1985

資料 12. 米の作付面積、単収及び生産量

Area and production of rice in Sri Lanka

Year	Area sown (1000 ha)	Production (1000 mt)	Average yield mt/ha
1975	6.96	1.18	2.27
1976	7.24	1.28	2.31
1977	8.30	1.71	2.52
1978	8.72	1.93	2.61
1979	8.40	1.96	2.75
1980	8.45	2.18	2.93
1981	8.77	1.58	3.00
1982	8.45	2.20	3.26
1983	8.25	2.54	3.60
1984	9.90	2.41	3.07

Source: Department of Census and Statistics,
Ministry of Planning Implementation
SRI LANKA, 1985

- | | |
|-----------------------------------|------------------------------------------------|
| 1. Increased area planted in rice | 2. Adoption of high yielding varieties (HYV's) |
| 3. Increased use of fertilizer | 5. A broadly based extension service |
| 4. A favourable guaranteed price | |

資料 13. 米の作期別平均単収

National Average Yields of Paddy

(Mt/ha)

Year	Maha	Yala	Agriculture Year
1960/61	1.9	1.9	1.8
61/62	1.9	1.9	1.9
62/63	2.0	2.0	1.9
63/64	2.0	2.1	2.0
64/65	1.8	1.8	1.7
65/66	1.9	1.8	1.8
66/67	2.1	2.2	2.1
67/68	2.5	2.3	2.4
68/69	2.7	2.5	2.5
69/70	2.7	2.6	2.6
70/71	2.3	2.5	2.3
71/72	2.5	2.3	2.4
72/73	2.4	2.2	2.3
73/74	2.5	2.2	2.3
74/75	2.4	2.1	2.2
75/76	2.4	2.1	2.3
76/77	2.7	2.3	2.5
77/78	2.7	2.4	2.6
78/79	2.8	2.6	2.7
79/80	3.0	2.9	2.9
80/81	3.0	3.0	2.9
81/82	3.2	3.4	3.2
82/83	3.7	3.7	3.5
83/84	3.0	3.1	3.1

Source: Department of census and statistics.

Ministry of Planning Implementation

SRI LANKA 1985

資料 14. その他輸出農産物の輸出動向

Trends in Volume of Export of Minor Export Crops
(Mn. kg)

Crop	1976	1980	1981	1982	1983	1984	1985
Pepper	0.10	0.95	2.22	1.30	1.29	2.77	1.12
Cinnamon	6.80	7.94	9.16	6.26	5.65	8.89	6.85
Cardamom	0.16	0.16	0.21	0.21	0.13	0.18	0.19
Coffee	1.71	0.91	2.03	2.92	3.12	3.65	3.90
Cocoa	1.11	0.90	0.90	0.14	0.73	0.62	0.97
Clove	0.48	1.19	1.34	0.97	1.77	0.97	0.27
Arecanuts	2.37	5.48	2.10	2.41	3.26	2.20	0.29

Sources: Public Investment 1986 - 1990
National Planning Division
Ministry of Finance and Planning
SRI LANKA
May 1986

資料 15. 砂糖の生産量及び輸入量

Trends in Sugar Production and Imports

	1970	1975	1980	1981	1982	1983	1984	1985
Extent Planted under Estate ('000 ha)	4.3	5.9	6.0	5.7	5.4	5.7	4.7	4.5
Factory Production ('000 tons)	8.5	18.0	23.5	23.7	22.7	21.5	18.3	19.5
Imports ('000 tons)	...	240	56	209	238	133	315	26.3
Imports Value (Mn. \$)	...	29	38	122	147	45	79	51
Per Capita availability (kg.) ...	19.6	5.5	15.9	17.6	10.3	21.8	18.0	24.5

Sources: Public Investment 1986 - 1990
National Planning Division
Ministry of Finance and Planning
SRI LANKA, May 1986

資料 16. 主要農産物の輸出動向

Trade of Major Agricultural Products

Unit: Quantity: 1,000 M/T
Value : US\$1,000,000

(1) Export

Item	1981		1982		1983		1984		1985	
	Quantity	Value	Quantity	Value	Quantity	Value	Quantity	Value	Quantity	Value
Tea	183.4	313.6	181.0	297.5	157.8	331.8	204.0	601.7	198.0	438.1
Rubber	132.5	140.6	131.3	108.9	125.2	114.1	126.2	126.0	120.2	93.7
Coconut in shell	NA	NA	8.2	1.3	5.8	0.9	4.1	1.1	9.3	1.3
Desicated Coconut	NA	NA	41.7	28.0	42.0	36.1	31.8	44.9	53.0	48.7
Copra	2.1	2.1	3.5	2.7	4.1	3.0	2.4	2.8	7.1	3.6
Sesame Seeds	2.0	6.2	2.3	11.0	5.5	2.7	0.6	0.4	2.3	1.1
Caster seed	NA	NA	2.9	0.9	2.5	0.8	2.5	1.1	1.9	0.6
Cocoa Beans	NA	NA	-	-	0.4	0.5	0.1	0.3	0.1	0.2
Coffee	NA	NA	2.9	5.2	3.1	6.5	3.7	8.9	0.0	0.0
Total	320.0	462.5	373.8	455.5	346.4	496.4	375.4	787.2	391.9	587.3

資料 17. 主要農産物の輸入動向

Trade of Major Agricultural Products

Unit: Quantity: 1,000 M/T
Value : US\$1,000,000

(2) Import

Item	1981		1982		1983		1984		1985	
	Quantity	Value	Quantity	Value	Quantity	Value	Quantity	Value	Quantity	Value
Rice	157.0	45.5	160.9	38.5	123.2	24.3	26.5	4.9	182.4	33.9
Suger	168.3	101.1	11.6	22.0	170.3	39.5	95.7	17.5	161.3	30.2
Wheat	510.0	91.1	365.5	61.8	423.6	64.9	615.1	58.2	226.3	41.3
Chillies	0.6	0.5	3.4	2.7	9.3	6.5	8.2	9.7	4.1	4.3
Potatoes	1.0	0.1	0.1	0.5	0.9	0.2	0.2	0.1	-	-
Onion	4.0	0.7	6.1	1.7	7.7	1.9	47.6	11.3	61.6	12.9
Maize	2.0	0.5	2.5	0.6	2.1	0.3	4.2	0.7	11.3	1.7
Pulses	-	-	9.2	6.6	22.5	6.7	57.2	2.6	32.9	2.2
Corriander	3.3	3.1	4.3	3.0	8.2	4.7	7.7	3.8	5.3	2.1
Garlic	2.1	0.6	2.7	1.3	3.0	1.2	4.6	1.8	3.7	1.4
Total	848.3	243.2	566.3	138.7	770.8	150.2	867.0	110.6	688.9	130.0

Remark: NA --- No static Figures.
Sources: Custum Statistics, Sri Lanka, 1986

資料 18. 乾燥地帯 / 中間地帯における可耕地

Extent of Available Rainfed Lands in the Dry and Intermediate Zone
('000 acres)

District	Lands with immediate potential	Lands under forests with good soils	Future potential lands with technical advances	Lands with low agricultural potential	Irrigated lands	Permanent Crops
Anuradhapura ...	395	232	12	353	198	324
Amparai ...	143	163	12	464	54	156
Badulla ...	124	—	—	180	111	185
Batticaloa ...	111	50	74	188	111	185
Hambantota ...	148	14	5	173	74	198
Jaffna ...	40	15	222	10	27	148
Kurunegala ...	235	—	—	54	25	662
Mannar ...	62	67	230	49	20	30
Matale ...	188	—	—	89	10	161
Moneragala ...	277	173	—	524	7	79
Mullaitivu ...	44	218	128	96	12	74
Polonnaruwa ...	27	97	—	346	198	86
Puttalam ...	198	53	180	188	7	230
Ratnapura ...	143	—	—	49	25	420
Trincomalee ...	99	177	20	116	62	94
Vavunnya ...	128	260	—	20	12	74
Total ...	<u>2363</u>	<u>1519</u>	<u>884</u>	<u>2899</u>	<u>953</u>	<u>3105</u>

Sources : National Agriculture, Food and Nutrition

National Planning Division
Ministry of Finance and Planning
June 1984

資料 19. 土地利用内訳

DISTRIBUTION OF LAND USE

Land Use	Hectars ha	Percent %
1. Settlement and associated non-agricultural land	19,534	0.3
2. Horticulture	586,309	9.0
3. Tea and other crops:		
a) Tea	259,473	3.9
b) Rubber 1)	227,373	3.5
c) Coconut 1)	250,464	3.8
d) Other	54,029	0.7
4. Cropland :		
a) Paddy	510,677	7.3
b) Land under development	43,412	0.7
c) Other	1,009,704	15.3
5. Improved permanent pasture	2,492	—
6. Grassland and scrubland	425,733	6.4
7. Woodland	2,899,457	44.2
8. Swamp and marsh	32,787	0.5
9. Unused land	43,147	0.7
10. Inland waters including salterns	204,734	3.2

Sources : Aerial survey based on a Canada-Colombo Plan Project-1961

Remarks : 1) It is possible that small holdings and mixed plantations have been included under items 2,3(d) and 4(c). The aerial survey figures may, therefore, differ from the figures obtained at the Census of Agriculture-1962.

Sources : Statistical Pocket Book of the Democratic Socialist Republic of SRI LANKA-1985.

資料 20. 作物別作付面積及び生産量(1982-83)

Crop Cultivated Area and Production in Sri Lanka (1982-1983)

Crop	Cultivated Area (Ha)	Production (M/T)
Paddy	856,665	2,580,346
Tea	242,130	179,287
Rubber	205,640	139,997
Coconut	451,472	22,362 Mn.nut
Chili	26,582	28,179
Red onion	11,416	132,260
Sorghum	18,640	12,865
Maize	47,040	51,268
Cow pea	45,606	40,290
Blackgram	17,476	12,897
Greengram	26,759	20,484
Peanut	15,177	20,099
Sesame	35,770	27,863
Soyabean	12,889	8,657
Manioc	44,853	717,846
Sweet potato	9,630	86,366
Potato	5,712	71,637

Remarks: *Tea, rubber and coconut are indicated the produced figures in 1983.

*Cultivated area of coconut is estimated from the figure of sensus in 1973.

Sources : Statistical Pocket Book of the Democratic Socialist Republic of Sri Lanka.

資料 21. 米の作付面積/単収/生産量

Paddy : Trends in Area, Yield and Production

	1970	1977	1979	1980	1981	1982	1983
Area (,000 acres)	1876	2046	2072	2087	2166	2086	2037
Yield (Bushels/acre)	50.9	47.7	52.3	56.5	57.6	62.8	69.7
Production (Mn Bushels)	77.3	80.3	91.8	102.1	106.7	103.2	118.7

Sources : National Agriculture, Food and Nutrition Strategy

National Planning Division

Ministry of Finance and Planning, Sri Lanka
June 1984

資料 22. 米の需要予測

Item	1985	1990	2000
Population (millions)	15.0	17.0	20.0
Per. capita demand (bu.)	8.5	8.5	8.5
Consumption requirement (bu. million)	127.5	144.5	170.5
Seed requirement (bu. million)	4.0	4.5	5.0
Waste 2% (bu. million)	2.5	2.9	3.4
Total requirement (bu. million)	134.0	151.9	178.4

資料 23. 米を除く主要作物の作付面積

AREA OF LAND UNDER PRINCIPAL CROPS (EXCLUDING PADDY) (1)

	(Hectares)						
	1977	1978	1979	1980	1981	1982	1983
Tea	242,012	242,899	244,099	244,710	244,918	242,141	242,130
Rubber	226,563	226,323	226,599	222,312	230,451	205,606	205,645
Coconut (2)	451,472	451,472	451,472	451,472	451,472	451,472	451,472
Kurakkan	34,600	32,500	23,200	21,400	19,600	20,400	19,700
Maize	27,500	24,800	19,500	19,400	24,000	26,700	26,200
Chillies	51,700	50,200	36,000	38,300	40,900	37,100	34,800
Red Onions	8,400	8,300	9,000	8,700	8,700	9,100	9,600
Potatoes	3,100	2,900	4,100	4,500	5,300	6,200	6,800
Manioc	95,800	74,300	53,600	51,000	56,100	59,100	55,400
Sweet Potatoes	27,700	20,700	16,300	14,300	16,600	16,300	14,400

Source: Dept. of Census and Statistics.

(1) The annual extent under other crops except tea, rubber and coconut was arrived at by adding together area under cultivation during Maha and Yala Seasons. These figures are rounded off to the nearest hundred hectares.

(2) Estimated from the 1973 Agricultural Census.

資料 24. スリランカ国側の施設・機材要請内容

TOTAL FLOOR AREA 2400 M²

TOP FLOOR

* <u>Tissue Culture and Genetic Engineering Lab.</u>	<u>M² Floor Area</u>		
Washing Room (Brick Walls)	35	} → 445	
Sterilization Room (Brick Walls)	30		
Preparation Room (See Through Type)	30		
▲ Media Storage (" " ")	10		
▲ Inoculation Work (" " ")	20		
Incubation Room	80		
Partitions for the Staff (See Through Type) (Number of partitions 3)	60		
▲ Partion for Electron microscopy and Photomicrography Work	50		} → Common Facility
▲ Analytical Work 3 Partitions 30 M ² , 30 M ² , 40 M ²	100		
Store Room	30		
* <u>Biochemistry Lab.</u>			
Working space with washing facilities	60	} → 170	
Partitions for the staff (See through' type) (Number of partitions 3)	50		
▲ Partition for special type of work	30		
Store Room	30		
* <u>Administration Office</u>			
Room for the Botanist	40	} → 205	
Room for the Assistants (See through type) (Number of partitions 4)	75		
Store-Room	30		
Visitors Room	60		
* <u>Musium and Demonstration Room</u>			
(Number of partitions 3 (see through type)	140	> 140	

<u>Plant Breeding Lab.</u>	<u>M² Floor Area</u>
Work Space with washing facility	50
Space for the staff 2 Partitions (See through type)	35
Space for induce mutation technology (For the preparatory work)	40
Store Room	30
	} 155
* Reading and Lecture room	140 > 140
Partitions 2, 50M ² , 90M ²	
* Auditorium with 2 ante rooms, 1 stage and veranda	700 > 700
Bath Rooms for the Floor	100 > 100
Other Space for Corridors, Balcony, Lobby and a Level Path From the Ground to the Top Floor.	} 345

*** Note: The Symbol A- indicate Air-conditioning.
All other rooms need adequate ventilation.

TOTAL FLOOR AREA 2400 M²

<u>Ground Floor</u>	<u>M² Floor Area</u>
* <u>Plant Physiology Lab.</u>	
Washing Room	35
Working Space for general work	50
Room for large apparatus	60
A Working space for special type of work	50
Store Room	40
Partitions for the Staff 3	50
	} 285

	<u>M² Floor Area</u>
* <u>Photography Unit</u>	
A Dark Room	30
Ante Room	15
Store Room	20
	} → 65
* <u>Germ Plasm Lab.</u>	
Space for the Staff (3 partitions)	60
Working space with washing facility	80
	} → 140
* <u>Agronomy Lab.</u>	
Space for the Staff (3 partitions)	60
Lab space for analytical work with washing facility	40
Space for general work with washing facility	40
A Space for special work	35
Crop storage facility	35
Store Room	40
	} → 250
* <u>Meteorology Unit</u>	
Room with 2 partitions 30m ² Each	60
Room for the staff 2 Partitions	40
	} → 100
* <u>Computer Data Bank</u>	
A - Room with 3 Partitions	80 > 80
* <u>Weed Science Unit</u>	
Space for the staff (2 partitions)	40
Working space with washing facility	40
Herbarium	40
Store Room	30
	} → 190
* <u>Micro Biology Unit</u>	
Space for the Staff (2 partitions)	40
Washing Room	30
A Culture room with 3 partitions	60
Store Room	30
	} → 160

	<u>M² Floor Area</u>	
* <u>Laboratory for the Visiting Scientists</u>		
Space for the staff (2 partitions)	40	} → 160
Room with washing facility	50	
▲ Space for the special work	40	
Store Room	30	
* <u>Central Stores (2 Rooms annexed)</u>	100	> 100
Bath rooms for the Floor	90	> 80
* <u>Radio Isotope Unit</u>		
Space for the staff (3 rooms)	60	} → 255
Preparation room	60	
Room for other work	40	
▲ Room for special Work	35	
Store Room	30	
Waste disposal purposes	30	
* <u>Laboratory space for future expansion</u>		
Space for the staff (3 partitions)	60	} → 200
General Laboratory	80	
Washing Room	30	
Store Room	30	
Other space for Corridors, Lobby and etc.	335	> 335

- Annexure 1 -

Structural works and Utilities

1. Main research building:

a two storied complex on a building area of 2400 m² with a total floor area of 4800 m², housing fully furnished and appropriately fitted and equipped laboratories and other facilities as indicated below:

- Germplasm laboratory - air conditioned;
- Tissue culture and Genetic engineering laboratory - air conditioned;
- Plant breeding laboratory;
- Plant physiology laboratory - air conditioned;
- Biochemistry laboratory - air conditioned;
- Agronomy laboratory;
- Isotope laboratory;
- Computer data bank - air conditioned;
- Meteorology recording systems unit;
- Photography unit - air conditioned;
- Auditorium - air conditioned;
- Reading and lecture room;
- Museum and demonstration room;
- Administration office.

2. Germplasm conservation Centre:

Designed, constructed and equipped to include the following:

- long term storage unit, (-10°C, 35% RH);
- Medium term storage unit, (2 to 3°C, 40% RH);
- Short term storage unit, (19°C, 50% RH);
- Air conditioned and dehumidified buffer area;
- Germination test room;
- Drying and packing area - low humidity and dust free;
- Processing area - low humidity area,
- Tumber room,
- refrigeration and machinery unit,
- stand by refrigeration facilities.

Annexure I continued...

3. Green house, screen house and phytotron complex:
 - Green houses for plant physiology research-3 units, each unit 4m X 8m X 2.5m high, galvanized light-gauge steel/aluminium alloy structured, with ferroconcrete foundation, concrete flooring, acrylic sheet roofing, light and heat interception and insulation, central partition to provide two separate compartments. Equipped with ventilation control, over head misting system and facilities for recording temperature, air humidity and light influx;
 - General research purpose green houses - 4 units, each unit 4m X 16m X 3m high;
 - Screen houses - 2 units, each unit 4m X 16m X 2.5m high with facilities for Pests and diseases screening.
 - n -- Dome shaped green house - one unit;
 - Phytotron.
4. Research field management buildings:
 - Seed processing shed;
 - Sampling room;
 - Storage room with shelves;
 - Agrochemical storage room;
 - Farm Machinery and Garage.
5. Supporting services unit:
 - equipment maintenance unit;
 - stand by generator unit;
 - Pumphouse and over head tank etc.
6. Staff housing :
 - Housing for the officers - 3 units;
 - Housing for Japanese consultants expected in phase II of the project - 2 units;
 - Circuit bungalow to accommodate Japanese engineers during construction phase and subsequently to be utilised as bachelors quarters.
7. Irrigation facilities for research fields:
 - construction of channel net work;
 - Sprinkler hydrant system.
8. Water electricity, Communications out lay:
 - I. Water supply:
 - Water intake, filtration and treatment plant, storage and hydrants system.

Annexure 1 continued....

ii. electricity supply:

- Strengthening of the transformer and cable system:
- Extension of electrical supply to research fields:
- Installation of stand by generator, complete with change over switch gear and circuit breakers, cross connecting cable systems etc.

iii. communications:

- Telephone exchange system PABX with 5 lines capacity and extension to laboratories.

9. Waste disposal system:

- Restructure the present sewage disposal system inclusive of a bio-gas production unit, treatment plant, disposal pumps etc;
- treatment & disposal of chemical and other toxic effluents from laboratories;
- Wood fired incinerator of brick and Mortar construction.

10. Road way:

- Connecting laboratories, and research fields.

11. Recreational facilities:

- health club facilities;
- indoor and out door games facilities.

Annexure II

I. LABORATORY INSTRUMENTS AND EQUIPMENT REQUISITES.

I.1. Germplasm collection, conservation, evaluation:

- Field collectors kit including cameras, altimeter, cassette recorders, camping equipment etc.
- Seed material cleaning, processing equipment including separators, graders, scarifiers etc.
- Automatic seed counters, electronic balances, seed moisture meters etc.
- Drying equipment - vacuum drying, drying with dehumidified and chilled air draughts, freeze drying etc.
- Sealing equipment - vacuum sealers, can sealers, poly sealers etc.
- Labelling equipment.
- Germination, viability testing equipment, incubators.
- Plant growth cabinets.
- Portable dehumidifiers, dessicating cabinets.
- Storage cans (non rusting), glass Jars (1 gallon capacity) with metal screw caps and rubber seals, laminated aluminium foil envelops, coin envelops etc.
- Color charts, silica gel with color indicators measuring tapes, vernier calipers.
- Refrigerators, deep freezers.
- Portable humidity, temperature measurement meters, potable pH meter, Salinity meters, Portable leafarea meters etc.
- Microscopes, Magnifiers etc.
- Electronic typewriter.

I.2. Tissue culture & genetic engineering:

- | | |
|------------------------------------------------------------------|--------------------------------------------|
| --Photomicrographic system; | - Platforms for orbit shaker, |
| --Cooled incubator, with interior illumination and time cycling, | - Plant growth cabinet |
| --Incubator, cooled, | ---Refrigerator, 15 cu.ft. |
| --Oven, sterilizer (small), | - Refrigerator (low-temp.) |
| --Microscope inverted, | - Autoclave (large) direct steam |
| --Microscope with illuminator, | - Centrifuge with tubes (various capacity) |
| --Still, double distillation, | - Drying cabinet, glassware (large) |
| --Orbit shaker, | - Clean bench (Laminar flow work bench) |
| --Incubating orbit shaker, environ. | - Laboratory air cleaner, |
| --Ultra centrifuge, | - Stereo zoom microscope, with graticules |
| --Electronic top loading balance | - Electronic analytical balance. |
| | ---Camera, with stands & close-up lens, |

Annexure II continued...

- Incubator, (Solution warming & Storage cabinet).
- Micro wave oven,
- Flask shaker
- Salinity meter.
- Roller tube incubator,
- Water still

- Spatula, 180mm
- Scalpel,
- Pipet cans, 60 x 75 x 400,
- Automatic dispenser,

- Hemacytometer,
- Cupboard, wall storage,
- Stand with clamps,
- Mini dispenser, 0.2 - 0.8ml
 , 0.8 - 3.0ml
 , 3.0 - 10.0ml
- Dispenser pipettes with adaptors for 50, 100, 200ul
- Interval timer,

- Filter holder micro syringe,
- Tank, polyethylene, 50
- Cork borers set, for 12 pcs.
- Petridish illuminator
- Aluminium foils,
- Magnifier, x4, x10, x15, x22
- Selection filter membrane, pH type
 100 pcs/pkt,
- Gloves,
- Bacteriometer,
- Dish, aluminium with cover,

- ~~Analytical balance,~~
- pH Meter
- Incubator (Propagator)
- Ultrasonic cleaner,
- Magnetic stirrer with Hot plate,
- Needles, stainless steel, 5 kinds
 1ml, 2ml, 3ml, 5ml, 10ml,
- Forceps, 180, stainless steel,
- Dish aluminium, 100mm depth = 22mm
- Slant ruler (Measures tilting with heads)
- Syringe pipettes, 0 - 1ml
 0 - 4ml
 0 - 10ml
- Blender,
- Drawer unit,
- Air pump (small) 5 /min.
- Micro pipettes with dispensable tips
 5 - 20ul 5 pcs.
 25 - 100ul = 5 pcs.
 tip, 5 - 100ul = 1,000 pcs.
- Timer,
- Filter holders, stainless steel & Funnel, stainless steel for 25 mm/filter,
- Monitor matched with aerosol filter,
- Stirrer (spin mix)
- Shelf, stainless steel,
- Plant pot, polypropylene 2520 x 300 mm
- Trolley,
- Test tube rack aluminium for 50

- Tweezers pick up triceps,
- Brushes, test tube,
- Cabinet (large),
- Scissors, 180 mm, SUS

Annexure II continued...

- Trays, enameled, 320 x 370 x 60
- Dissecting set micro
- Ultra microtome with knife maker for electron microscope,
- Knife & hone for Microtome,
- Floating out bath,
- Microscope with closed circuit television
- Test tube rack, aluminium for 50 pcs,
- Typewriter English,
- Microhammer cutter mill,
- Kjeldahl apparatus scrubber distillation and titrator
- Atomic absorption spectrophotometer
- Electron Microscope
- Oxygen meter, digital
- Illuminator, dual goose neck
- Illuminometer, single head,
- High intensity magnifier, 100x
- Ultraviolet water sterilizer,
- Tubing connector, straight type, PP Tubing polyethylene, ID 13 mm, 10m
- Student microscope
- Small table microtome swift, for general microscope,
- Macerator,
- "L" could with plate,
- Test tube rack, plastic for 12 pcs.
- Water Bath,
- Forcep warmer,
- Muffle furnace,
- Spectrophotometer UV-VIS, dig-tal
- Etraction apparatus,
- Infrared theromometer,
- Illuminator,
- Table top magnifier,
- Cold plate with stirrer,
- Turbidimeter triple range,
-

1.3. Plant breeding:

- Vacume emasculator,
- Refrigerator 15 cu.ft.
- Seed counting machine, electronic,
- pH meter,
- Infrared thermometer,
- Top loading electronic balance, cap. 5,000g, 1g
- Balance-compression spring
- Porometer,
- Incubator,
- Threshing machine,
- Dessicator center plate dia. 210 mm
- Leaf area meter,
- Balance-spring dial (50kg x 100g),
- Dryer,

Annexure II continued...

I.4. Plant physiology:

- Seed testing bath,
- Microscope student type portable
- Microscope large,
- High pressure sterilizer,
- Oven,
- Sprayer,
- Infrared thermometer,
- Refrigerator,
- Magnetic stirrer with hot plate,
- Blender,
- Analytical balance 4 decimals
- Constant temp. shaking bath,
- Ultrasonic cleaner,
- Salinity meter,
- Digital thermometer,
- Vacuum pump,
- Safety cabinet,
- Fume absorber,
- Water bath, temp. controlled,
- Shaker (flask),,
- Centrifuge table model,
- UV-VIS Spectrophotometer,
- High performance liquid chromatograph,
-
- Polarimeter,
- Microscope large,
- Microscope stereo,
- Oxygen meter,
- Dryer,
- Incubator (light & timecycling)
- Light intensity meter,
- pH meter,
- Rotary evaporator,
- Microhammer cutter mill,
- Balance top loading,
- Psychrometer assmann,
- Distil apparatus,
- Precision magnifier, x4, x10, x15, x22,
- Colorimeter,
- Air pump,
- Leak proof safety can, 10 SUS,
- Pipette dispensers,
- Water bath with a shaker,
- Horizontal orbit shaker,
- Leaf area meter,
- Gas analyzer,
- Thin layer chromatography unit,

I.5. Biochemistry:

- Balances, semimicro,
- Micro balance electronic,
- Cooling water circulator,
- Chromatography apparatus
- Electrophoresis apparatus,
- Pipette basket,
- Metabolic shaking incubator,
- Micropipette, autoclavable,
1, 2, 5, 10, 20, 25, 50, &
100 μ l
- Balance top loading,
- Vibrospatula,
- Centrifuge hand driver,
- Distillary apparatus, glass,
- Support pipettes,
- Thermostatic water bath,
- Ultrasonic cleaner,
- Repetitive dispenser,

Annexure II continued ...

- Micro syringe dispenser, 10, 25 & 100 μ l with spare syringe & tip,
- Lab-line anaerobic chamber,
- Fraction collector,
- Fume absorber replicant filter
- Thermometer digital
- Silicone rubber extruded tapes portable heat sealer operating temp. 180 $^{\circ}$ c, max. 240 $^{\circ}$ c, 5m
- 6-unit heating and extraction rack,
- Cold plate stirrer,
- storage cabinet,
- Spectrophotometer, digital,
- Autoclave (Digesdahl apparatus)
- Rotary evaporator,
- Disperser (Vortex mixture)
- Oven constant temp. with blower,
- pH meter, digital,
- Microwave oven,
- Jet-pipet small volume repetitive dispenser sample Cap. 10 - 100 μ l,
- Rotary vacuum evaporator,
- Fume hood 1,200mm width,
- Single block heater, Triple block heater,
- Flexible electric heating tubes max. 230 $^{\circ}$ c. 1m
- Single head illuminator,
- Glassware cart,
- Bench stirrer,
- Gas chromatograph, TCD & FID,
- Centrifuge,
- Amino acid analyzer,
- Oven gravity convection,
- Incubator,
- Drying cabinet,
- Freeze dryer with stoppering chamber,

I.6. Agronomy:

- Hand held anemometer,
- Maximum & minimum thermometer,
- Actinograph (Albedometer),
- Hygrograph,
- Micro hammer cutter mill,
- Leaf area meter,
- Sieve shaker portable,
- Porometer,
- Sensitive anemometer,
- Pyrheliometer,
- Sunshine recorder (Solar integrater),
- Oven,
- Portable leaf area meter,
- Hygrometer/Psychrometer,
- Transducer for hygrometer and psychrometer,
- Grain moisture meter,

Annexure II continued...

- Soil thermometer 0 -300 mm
- Hygograph,
- 5 pcs/set,
- Soil moisture tester and
- Auto analyzer,
- tensiometer with insertion
- tool (augh)
- Balance top loading electronic,
- Balance heavy duty, 50kg - 100g,
- Light weight platform truck,
- Hand truck,
- cap. 1,000kg
- Air conditioner,
- Magnetic stirrer,
- Chemicals,
- Water bath,
- Refrigerator, 15 cu.ft.
- Muffle furnace,
- Mortar and pestle,
- High pressure, vacuum rubber tubing
- o.D. 240 mm
- I,D, 12 mm, 10 m.

I.7 Isotope studies:

- Necessary equipment for radio isotope research in crop science.

I.8 Meteorology:

Automatic weather station complete with all sensors, data logger and mast
- operating on a solar panel generator, 12v battery, system and comprising:

- cup anemometer,
- wind direction sensor,
- Net radio-meter,
- Solarimeter,
- Tipping bucket raingauge,
- Thermal radiation screen,
- Thermister,
- solid state relative humidity sensor,
- Barometer,

I.9 Photography:

- Camera with a stand & flash light system,
- Camera with wide angle, close up, telephoto lenses and filters,
- Enlarger and the Easel 14" x 17",
- Lamp red, yellow white,
- Aristo magic light box,

Annexure II continued...

- Paper trimmer,
- Glazer dryer,
- facilities for colour photography, processing,
- I.19 Museum:
 - specimenbottles 210 dia x 300 mm,
 - Cylinders, 1,000 l,
 - tanks glass,
 - slide projector with stand,
 - other furniture,
 - wall cupboards see through type,
 - Epidias-cope,
 - Calculator,
 - Other facilities,
 - vacuum cleaner,
- II Computer system:
 - II.1 Hardware:
 - Central processor 16 bit address capacity, minimum memory capacity 1 MB with multiuser capacity/ 32 bit data pulse.
 - 20 MB of hard Disk storage,
 - 1 MB of floppy Disk storage,
 - 3 terminals 1 terminal having graphics capacity,
 - 1 printer - 150 CPS (able to handle graphics)
 - II.2 Software:
 - UNIX or variant of UNIX operating system,
 - language FORTRAN 77, PASCAL,
 - Data base management system,
 - Graphics software,
 - Word processing software,
- III Calculators:
 - calculators, with scientific/statistical functions, programable, both portable and desk top models for all divisions,
- IV Office equipment;
 - Electric type writers,
 - Furniture,

Annexure II continued...

- Steel cupboards (small and large)
- Drawer units,
- Tray units,
- Wall clocks
- photocopiers (with reduction and Enlargement facilities),
- Graphic Arts supplies,
- off-set printer,
- Vacuum cleaner,
- Floor polisher,
- Micro filing system,
- Automatic duplicating machine,
- Book binding machines,
- V. Vehicals & Farm machinery:
 - Land cruiser 4WD diesel, air conditioned and equipped for germplasm collection purpose - 2 Nos. - 2 Nos.
 - Jeeps 4WD diesel - 2 Nos.
 - Double cab pickup - 2 Nos.
 - Minibus (30 seater) - 1 Nos.
 - Cars diesel - 3 Nos.
 - Mobile laboratory vehicle - 1 Nos.
 - Tractor 4 wheels with accessories - 2 Nos.
 - Tractor 2 wheels " " - 2 Nos.
 - Motorbikes - 5 Nos.
 - Other machinery,
- Vi. Workshop tools:
 - For maintenance of
 - Mechanical equipment;
 - Electrical equipment;
 - Electronic equipment;
 - Refrigeration and air conditioning.
- Vii. Field equipment :
 - Knapsack, power, ULV sprayers & dusters,
 - Field preparation, levelling equipment.

Annexure II continued...

Vii. Audio-Visual Equipment (Auditorium):

- Fully air conditioned,
- Moviefilm projectors,
- Screen,
- Slide projectors,
- TV colour with video cassettes,
- Microphones speakers Amplifiers etc.
- Electric type writers,
- Tape recorders,
- Electric wall clocks,
- Epidiascope,
- Over head projector,
- Vacuum cleaner,
- Floor polisher,

資料 25. 助成金付食用作物の生産量

Crops	1974	1975	1976	1977	1978	1979	1980	1981	1982	1983
Cowpea	2.02	7.56	11.9	21.13	22.51	18.77	23.51	39.32	37.68	26.12
Green gram	5.89	5.93	9.70	7.80	8.40	9.68	12.93	18.90	18.99	15.13
Ground nuts	7.36	7.61	6.09	6.56	7.47	5.40	14.05	14.48	14.79	17.27
Black gram	0.65	1.05	2.36	11.7	8.64	6.05	5.51	7.35	9.23	12.86
Soya bean	1.0	1.15	6.77	1.11	2.87	1.33	1.08	2.39	11.14	10.61
Pigeon pea	1.662	0.227	0.041	0.001	0.038	0.054	-	-	-	-
Maize	23.85	34.55	31.07	41.95	35.20	26.03	31.37	35.30	45.00	51.02
Kurakkan	19.56	20.56	15.59	22.72	14.61	10.76	6.74	62.52	13.31	11.67
Sorghum	3.13	6.40	1.66	2.00	0.54	0.18	0.08	0.16	-	-
Meneri	n.a.	0.49	0.84	1.08	0.52	0.10	0.79	0.78	1.29	-

Source: Agric. Implementation Programme, Ministry of Agricultural Development & Research.

資料 26. その他畑作物の作付面積

('000 ha)

Crop	1976	1982	1983	1984	1985	Growth Rate (%) 1976-85		
Coarse Grains								
Maize	30.4	49.9	47.3	45.4	34.8	1.4	
Kurakkan	...	n.a.	16.1	19.9	11.3*	n.a.	-1.5	
Pulses								
Greengram	...	8.4	21.2	28.6	29.6	21.3	10.9	
Blackgram	...	5.1	9.9	17.5	33.4	12.5	10.5	
Cowpea	19.2	38.8	45.0	31.3	29.3	4.8	
Oil Seeds								
Sesame	19.0	32.7	31.6	5.0	14.3	-3.2	
Ground Nuts	...	6.7	14.4	13.8	7.6	8.3	2.4	
Soya Bean	...	0.7	17.4	14.6	11.8	2.3	15.3	
Spices								
Chillies...	...	43.3	28.4	32.1	30.8	23.5	-6.8	
Onions	7.7	8.2	11.7	8.3	5.9	-3.0	
Root & Tubers								
Manioc	69.4	52.9	37.8	38.3	22.6	-13.5	
Sweet Potatoes	...	15.0	9.1	1.0	9.6*	4.9*	-13.3	
Potatoes...	...	2.8	5.7	6.6	7.9	8.3	12.8	
Total ...	12.8	...	227.7	304.7	307.5	270.3	208.9	-0.9

* shifting cultivation

Sources: Public Investment 1986 - 1990
National Planning Division
Ministry of Finance and Planning
SRI LANKA, May 1986.

資料 27 研究機関別の研究者数・研究支出額 (83) (単位:人、千ルピー)

研究機関等	研究者数			研究支出額	
	PLO	Master	BS	資本支出	経常支出
農業局研究部 (注1)	29	74	155	16,891	31,979
中央農業研究所	6	21	17		
中央イネ育種試験場	1	4	6		
地域農業研究センター	17	52	74		
その他	3	11	10		
さとうきび研究所	1	2	8	3,045	9,453
マイナー輸出作物研究所	1	8	14	5,777	3,177
農地研究訓練研究所	4	15	18	75	12,562
ココナッツ研究所	6	14	17	11,492	21,833
茶研究所	9	7	15	3,466	21,399
ゴム研究所	10	10	11	965	11,962
獣医学研究所	11	10	9	4,921	3,826
森林・かんがい関係	2	3	10	2,120	3,853
国立水産資源研究所	5	10	18	5,000	4,000
大学関係 (注2)	22	27	28		2,250
計	78	153	275	53,752	124,040
総計	506			177,792 千RB	
				≒7,408 千US\$	

(注) 1. 研究者数の内訳とは年次が異なるため合計は一致しない。

2. 大学全てを含むものではない。

3. 林業、水産関係も含む。

4. 研究努力としては、研究者のほかに技術者(Experimental Officer)及び研

究助手があり農業局研究部ではそれぞれ102人、115人となっている
(年次不明)。

資料 28. 農業局所属研究所の職員配置内訳

Staff Allocation of the Existing Research Facilities
under the Department of Agriculture

Research Centre/Station	Staff Strength			
	RO	EO	RA	Total
1. CARI-Peradeniya	55	21	45	121
Plant Quarantine	3	2	-	5
2. RARC - M.I.	34	12	15	61
3. RARC - Bombuwela	16	7	9	32
PRS - Bentota	1	2	1	4
ARS - Labuduwa	-	-	1	1
4. RARC - Angunakola				
- Pelessa	20	5	11	36
PRS - Amblantota	1	2	1	4
5. RARC - Kilinochchi	14	11	5	30
ARS - Tinnevely	3	2	2	7
PRS - Paranthan	3	-	-	3
PRS - Murunkan	1	1	-	2
6. PARC - Bandarawela	13	7	2	22
ARS - Rahangala	1	2	-	3
ARS - Moneragala	2	2	-	4
ARS - Sitaeliya	5	6	4	15
7. RARC - Mahakandura	8	9	-	17
ARS - Eluvankulam	2	2	-	4
ARS - Kandakuliya	1	-	-	1
ARS - Kalpitiya	-	1	-	1
8. RARC -				
9. CRSS - Batalagoda	10	1	-	11
10. DDA (R) Office	2	1	-	3
Land & Water use	4	1	3	8
Soil conservation	3	-	-	3
Under training	-	-	14	14
11. Floriculture	1	1	1	3
12. Systematic Botany	2	1	1	4
13. Seed certification service	-	1	-	1
Total	205	100	115	420

R.O. = Research Officers

E.O. = Experimental Officers

R.A. = Research Assistants

- BSc or MSc or PhD qualified

- BSc or MSc qualified

- Two years special training after high school.

* The total approved cadres of RO and EO, and RA up to 1990 are 577 and 160 respectively. Annual recruitments will be done according to requirements and provisions available.

資料 29. 1983年度農作物別研究費の支出内訳

Recurrent Research Expenditure on Agricultural Commodities in 1983

	Production value (million Rs) A)	Percentage of total production value	Research D) Expenditure (thousand Rs)	Percentage of total research expenditure	Congruence Ratio C)	Research expenditure per thousand Rs production value (Rs)
Food crops research						
Paddy	5,482	23.3				
Other food crops	2,409 ^{D)}	10.3	26,547	20.6	0.88	4.84
Sugarcane	1,299	5.5	3,032	2.4	0.23	1.26
Resource management ^{E)}			9,455	7.3	1.33	7.28
Socio-economic ^{F)}			2,749	2.1		
Total food crops	9,190	39.1	13,821	10.7		
			55,604	43.1	1.10	6.05
Export crops research						
Coconut	3,283	14.0				
Tea	2,302	9.7	21,833	16.9	1.21	7.65
Rubber	1,024	4.4	21,399	16.6	1.71	9.30
Minor export crops	1,645	7.0	11,962	9.3	2.11	11.68
Other grants ^{G)}			3,177	2.5	0.36	1.93
Total export crops	8,254	35.1	6,000	4.7		
			64,371	49.9	1.42	7.80
Total all crops	17,444	74.2	119,975	93.1	1.25	6.88
Livestock^{H)}						
Livestock ^{H)}	1,455	6.2	3,826	3.0	0.48	2.15
Fisheries	2,903	12.3	4,000	3.1	0.25	1.38
Forestry	1,710	7.3	1,104	0.9	0.12	0.65
Total all commodities	23,512	100.0	128,905	100.0	1.00	5.48

NOTES:

- A) Value in 1983 constant prices. Source of most data, Department of Agricultural Economics, MAOE.
 B) Research expenditure based on recurrent costs only. Capital costs add at least Rs 50 million, to the total Rs. 130 million recurrent costs. The total expenditure for agricultural research would thus be about Rs 180 million or about US\$7.5 million. This is 0.77% of gross production value.
 C) The congruence ratio is the ratio of the percentage of research expenditure on a commodity of the total research budget to the percentage of the production value of that commodity of the total value of agricultural production. A perfect match of research expenditure to production value is 1.00.
 D) Value estimated.
 E) Land and Water Management, HLLD.
 F) Includes economic research at ANRI, and Irrigation/Survey Research.
 G) Includes cashew, silk, and also some university grants.
 H) Value of livestock production includes sales of meat, milk, eggs, hides and skins, and estimated value animal draft, and manure.

Sources: ISNAR (International Service for National Agricultural Research The Hague, Netherland), June 1984

資料 30. 米新品種の血統一覽

Genealogy of Newly Bred Rice Varieties

<u>Year *</u>	<u>Variety</u>	<u>Age class</u>	<u>Pedigree</u>
1958	H ₄	4 - 4 1/2	M 302/Mas
1960	H ₆	4 - 4 1/2	
1964	H ₇	3 1/2	PP/Max/H ₅
1968	H ₉	5 - 6	CI04/Max/Panduruwee
1969	62-355	3	PP/H ₅
1970	Bg 11-11	4 - 4 1/2	Engatek *2/H ₆
1970	Bg 34-6	3 1/2	IR8-246//PP/Mas///H501
1970	LD 66	4 - 4 1/2	H501/DGWC
1971	Bg 34-8	3	IR8-246//PP/Mas///H501
1971	H ₄ mutant	4 1/2	
1973	Bg 3-5	5-6	Panduruwee/Mas/Engatek
1975	Bg 90-2	4 - 4 1/2	IR262/Remadja
1975	Bg 94-1	3 1/2	IR262/LD66
1975	AT 16	3 1/2	IR8/H ₄
1975	Bw 78	4 - 4 1/2	
1978	Bg 94-2	3 1/2	IR262/LD66
1979	Bg 400-1	4 - 4 1/2	ob678//IR20/H ₄
1979	Bg 276-5	3	ob678*2/Bg 34-8
1979	Bw 100	4 - 4 1/2	H ₅₀₁ /podiwee A8/H ₅ *2
1979	Bg 12-1	4 - 4 1/2	ob678/Bg 11-11
1979	Bg 304-1	3 1/2	Bg 94-1*2/ob678
1980	Bg 379-2	4 - 4 1/2	Bg 96-3*2/Ptb33
1981	Bw 267-3	3 1/2	LD125/Bw248-1
1981	Bw 266-7	3 1/2	Bw 242-5-5/ob677/Bg 902*2
1981	Bw 272-6b	3	Bw 259-3/Bw 242-5-5
1981	Bg 750	2 - 2 1/2	Ainansao//75-1870/PP
1981	Bg 407	6	IR5/Panduru wee
1982	Bg 745	6	71-554/Podiwee A-8
1982	Bg 380	4	Bg 90-2*2/ob677
1986	Bg 573	4 - 4 1/2	Bg 12-1*2/IR42
1986	Bg 94-IR	3 1/2	Bg 94-1//Bg 401-1/ 80-3717(F ₂)//Bg 94-1
1986	Bw 288-1-3	3 1/2	Bg 90-2/Bg 401-1

Sources: Questionnaires, witten by CARI, Peradeniya

資料 31. 食用豆及び雑穀の遺伝資源収集状況

AVAILABLE GERmplasm COLLECTION IN FOOD LEGUMES
AND COARSE GRAINS

Crop	Germpiasm	Number of Varieties cultivated
Mungbean	225	4
Cowpea	220	4
Black gram	34	2
Groundnut	132	4
Pigeon pea	38	1
Soybean	300	4
Maize	98	3
Sorghum	118	1
Kurakkan	12	3
Minor millets	15	5

Sources: Conservation of Food Crop Genetic Resources in
SRI LANKA

By S.D.G. Jayawardene etc. CARI, 1985

資料 32. 豆類及び雑穀の収量試験

YIELDS OF GRAIN LEGUMES AND COARSE GRAINS OBTAINED
BY AN AVERAGE FARMER AND POTENTIAL YIELDS UNDER HIGH
MANAGEMENT

Crop	Average Farmer Kg/ha	High Management Kg/ha
Green gram	850	2200
Cowpea	1000	2500
Groudnut	1000	3000
Black gram	650	2000
Soybean	1000	3500
Pigeon pea	800	1200
Maize	1000	5600
Sorghum	1200	3500
Kurakkan	900	2900

Sources: Conservation of Food Crop Genetic Resources
in SRI LANKA

By S.D.G. Jayawardene etc.

資料 33. トウモロコシ在来種8品種の収量及び栽培学的データ

Grain Yield and Agronomic Data of Eight Local Varieties of Maize

Evaluated during the Rainy season of 1981/82

Variety	Days to 50% Silking	Plant Ht. cms.	Ear Ht. cms.	Lodging %		Yield Kg/ha
				Root	Stalk	
Local 1 (Mahiyangana)	71	247	156	20	0	4470
Local 2 (Walapane)	68	320	155	7	1	4800
Local 3 (Nildandahinna)	69	236	129	10	2	3867
Local 4 (Mapakada)	68	358	164	13	1	3841
Local 5 (Tabbowa)	62	203	121	21	1	3339
Local 6 (Moneragala)	62	254	151	15	0	3779
Local 7 (Masspanna)	62	257	159	8	2	4369
Local 8 (Anuradhapura)	66	191	93	19	7	2332
Bhadra 1 (Check)	64	195	104	0	10	4972
C.V.%						22.65
L.S.D. (P=0.05)						352 Kg/ha

Sources: Experimental Data of CARI 1983

資料 34. 豆類及び雑穀の共同試験計画に参加している試験所

THE STATIONS PARTICIPATING IN THE ON-GOING NATIONAL
CO-ORDINATED RESEARCH PROGRAMMES FOR GRAIN LEGUMES
AND COARSE GRAINS

Crop	Aralaganwila	Angunakolapelessa	Canoruwa	Cirandurukotta	Karadiyan Aru	Killinochchilli	Maha Illuppallama	Makandure	Moneragala	Thirunelvely	Vanathavillu
Green gram	*	*		*	*	*	**	*	*	*	*
Cowpea	*	*		*	*	*	**	*	*	*	*
Groundnut	*	**		*	*	*	*	*	*		*
Soybean	*	*	*	*	*	*	**	*		*	
Maize	*	*		*			**		*		*
Kurakkan	*	*		*	**	*	*				

* Participating Station ** Co-ordinating Station

資料 35. 根茎作物の個体件数

Number of original accessions, duplicates and distinct accessions of Tropical root & tuber crops.

Source of Origin	Ca ^a	Number of Acquired Materials				
		Sp	Di	Co.	In.	etc.
<u>Sri Lanka</u>						
Kalutara District	9	11	12	10	9	2
Galle District	11	16	20	9	2	2
Nuwara Eliya District	4	1	-	-	-	3
Kegalle District	3	-	4	1	-	-
Monaragala District	-	-	5	2	-	-
Bataloa District	5	-	-	-	-	-
Anuradhapura District	1	-	-	-	-	-
Kurunegala District	-	-	5	-	-	-
Badulla District	-	-	3	2	-	-
Kandy District	90	48	10	10	1	4
CIAT (Colombia)	50	-	-	-	-	-
AVRDC (Taiwan)	-	10	-	-	-	-
IITA (Nigeria)	-	3	-	-	-	-
VISCA (Philippines)	-	3	-	-	-	-
Indunisia	-	-	-	-	01	-
Total	190	97	65	38	20	11
No. of duplicates	? ^b	-	26	14	?	3
No. of distinct	?	97	39	24	?	3

a - Ca - Cassava, Sp - Sweet potato

Di - Dioscorea, Co - Co (yam) & other Aroids.

In - Innala (Coleus)

etc. - Ginger, Turmeric, Artichoke, canna spps.

b - Not catergorised.

Sources: Conservation of Food Crop Genetic Resources in SRI LANKA.

By S.D.G. Jayawardene etc.

Rice Germplasm Evaluations

Character/Problem traits	Varieties with high degree of Tolerance/Resistance.
Brown Planthopper	Ptb 33, MR 1523, Suduru Samba, Heen Rathkunda, Sudu Heenetti.
Gall midge	Ob 677, Ob 678, Leauung 152, Ptb. 18, Ptb 21.
Thrips	Dhanala.
Green Leafhopper	Bg line (on going screening)
Blast	Murungakayan 302, Tadukan, Tetep, Tres Marias, Carreon Dissi Hatif, DNJ 129, Ta-poo-cho-z, Engatek, Remadja, C46-15.
Bacterial leaf blight	Bj-1, DZ 192, Malagkit Sung Song, RL Gophar, Zenith.
Submergence at Seedling stage	Karammana, Soola, Maduluwa, Molligoda, Dewareddiri.
Salinity	Pokkali, Bw 272-8.
Iron Toxicity	H ₄ , Dewareddiri, Bw 267-3, Bw 78, Bw 100.

資料 37. 雑穀及び豆の改良品種

Improved Varieties of Coarse Grain & Grain Legumes

<u>Year</u>	<u>Crop</u>	<u>Variety</u>	<u>Parents</u>	<u>Age(months)</u>
1977	Maize	Bhadra-1	composite of 35 varieties	3 1/2
	Finger millet	Co-10		
	Green gram	Local varieties selections		2 1/2
1982	Green gram	Type 77	Eg-Mg-16/ML3// Eg-Mg-16	2-2 1/2
1982	Green gram	MI-4		2-2 1/2
1982	Green gram	MI-5	Eg3/MI 2	2-2 1/2
1982	Cowpea	IITA	TV/930-01B	2-2 1/2
1982	Cowpea	Selection 75	Arlington/Floriceam	2-2 1/2
1982	Cowpea	Bombay	introduction	3
1982	Cowpea	MI-35	Arlington/floriceam	2
1982	Cowpea	Arlington	introduction	2 1/2-3
1982	Groundnut	X-14	Introduction KRISAT	3-3 1/2
1961	Groundnut	Red spanish	introduction	3-4
1982	Groundnut	MI-1		3-3 1/2
1982	Gro-ndnut	No.45		3-3 1/2

Sources: Questionnaires at CARI, 1986

資料 38. 稲栽培品種(1984-85)の実態

<u>Rice Variety</u>	<u>Cultivated Area (ha)</u>	<u>Ratio (%)</u>	
BG 94-1	224,210	22.9	88.6%
BG 34-8	155,000	15.8	
BG 400-1	143,355	14.7	
BG 276-5	106,745	10.9	
BG 34-6	91,005	9.3	
BG 11-11	68,035	6.9	
BG 379-2	38,375	3.9	
BW 272-6B	13,185	1.3	
BG 380	12,190	1.2	
BW 100	4,775	0.5	
BG 90-2	4,510	0.4	
BW 267-3	4,005	0.4	
BG 3-5	2,575	0.3	
BG 94-2	1,390	0.1	
BW 266-7	420	0.04	
BW 78	215	0.02	88.66%
H 4	48,550	4.9	
62-355	7,285	0.7	5.6%
Tradit ional Var.	49,695	5.1	5.1%
Total			99.36%

資料 39. 遺伝資源収集及び評価活動の進歩

Crop	Accessions Assembled	Characters/Problem Traits evaluated	Accessions screened	Sources identified	Utilization	Problems
1. Rice	2745	Resistance to Pests.				
		1a. Brown plant hopper.	600	5	3 used as donor parents.	
		1b. Gall midge	450	8	5 used as donor parents.	
		1c. Thrips	250	7	Poor combining ability.	
		1d. Stem borer	280	-		
		1e. Green leaf hopper	250	1	Utilized in breeding programs.	Lack of suitable techniques to evaluate & select for desired characters in segregating populations.
		Resistance to Diseases.				
		2a. Blast	850	11	Utilized in breeding programs.	
		2b. Bacterial leaf blight	800	5	Utilized in breeding programs.	
		Eco-edaphic stresses				
		3a. Submergence tolerance	80	6	3 used as donor parents.	
		3b. Cold tolerance at seedling stage	95	13	To be included in breeding programs.	
		3c. Salinity	150	1	Poor combining ability.	
		3d. Phosphorus deficiency	346	4		
		3e. Iron toxicity	350	6	2 used as donor parents.	
2. Root & Tuber						
a. Cassava	190	Preliminary evaluations				
b. Sweet potato	97	on yield performance.				
c. Dioscorea	65					
d. Aroids	38					
e. Others	31					
3. Other crops						
a. Minor cereals						
b. Legumes						
c. Horticultural Crops		Systematic conservation efforts needs to be implemented.				
d. Spices.						

資料 40. 1986-1990年政府財政支出計画

(A) 概要

ALLOCATION OF GOVERNMENT CAPITAL EXPENDITURE 1986-1990

(A) Summary
(Rs. Million)

	1986	1987	1988	1989	1990	1986-90
1. Total Public Investment	24850	24883	26573	28190	29920	134416
2. Add Adjustment for Capital Transfers	1987	920	692	342	330	4271
3. Total Capital Expenditure (Public Sector)	26837	25803	27265	28532	30250	138687
of which						
(i) Extra Budgetary Resources	2260	2415	2585	2765	2960	12985
(ii) Non Expansionary Resources available to Government Budget	21457	20288	23243	25767	26619	117374
(iii) Supplementary financing required for investment programme	3120	3100	1487	-	671	8326
4. Total Budgetary Provision after adjustments	24577	23388	24680	25767	27290	125702
of which						
(i) Ongoing Projects	22990	21234	21361	18948	14105	98638
(ii) New Projects	11587	2154	3319	6819	13185	27064

(i) Includes items for which supplementary provision will be required.

Sources: Public Investment 1986 - 1990
National Planning Division
Ministry of Finance and Planning
SRI LANKA, May 1986

資料 41. 1986-1990年政府財政支出計画

(B) 部門別概要(進行中プロジェクト)

ALLOCATION OF GOVERNMENT CAPITAL EXPENDITURE 1986-1990

(B) Sector Summary, Ongoing Projects
(Rs. Million)

Item	1986		1987		1988		1989		1990		1986-90			
	FA	FC	FA	LC	FA	LC	FA	LC	FA	LC	FA	LC	FA	
Ongoing	22990	8974	21334	7877	21458	7602	19028	5459	14369	2651	99177	43168	56009	33756
Agriculture														
(1) Mahaweli	3450	1982	3653	1857	3299	2334	2408	1271	2341	1238	15151	6405	8746	8681
(2) Other Irrigation	1005	549	645	309	465	220	376	139	355	115	2846	825	2021	1332
(3) Field & Minor Export Crops	554	208	640	264	548	198	454	195	213	3	2409	781	1628	868
(4) Forestry & Lands	371	189	367	202	402	209	349	130	272	109	1761	674	1087	839
(5) Plantations	665	345	452	191	457	131	238	1	258	1	2070	614	1456	669
(6) Animal Husbandry	127	68	136	93	176	123	160	109	70	39	669	432	237	432
(7) Fisheries	234	145	212	108	249	135	159	84	186	111	1040	471	569	583
Industry	101	8	94	3	87	3	86	1	84	1	452	13	439	16
Housing, Water Supply and Urban Development														
(1) Housing	500	-	450	23	600	23	610	20	630	-	2790	539	2251	6
(2) Other Construction	400	5	365	53	400	28	425	11	400	1	1990	666	1324	9
(3) Water Supply	823	423	800	300	276	42	70	31	-	-	1969	1004	965	79
Economic Infrastructure														
(1) Transport	1711	424	1817	275	2807	200	2540	2	756	2	9631	4662	4969	90
(2) Power	1190	1014	1373	1350	2442	2419	2325	2300	330	305	7660	7428	232	738
(3) Posts & Telecommunications	714	338	955	334	934	441	683	316	448	79	3734	2399	1335	150
(4) Airports and Ports	1594	1377	767	728	362	211	176	64	40	-	2919	2919	2113	238
Other														
(1) I.R.D.P.	427	343	635	540	933	737	845	689	759	611	3599	1080	2519	292
(2) Ad. Overheads and Other Programmes	2626	180	2083	-	2288	-	2354	-	2425	-	11776	6549	5227	18
Social Infrastructure														
(1) Education	1140	378	1139	121	899	-	947	-	1005	-	5130	1532	3598	49
(2) Health	552	172	1031	262	779	146	738	95	698	35	3798	1516	2282	71
(3) Others	235	18	220	8	75	2	85	1	99	1	714	31	683	3
Hd. Miscellaneous	4569	808	3500	856	3000	630	3000	563	3000	-	17609	3414	13655	285
Of which HTIP Plantations	(748)	(748)	(822)	(822)	(630)	(630)	(563)	(563)	-	-	-	-	-	-

資料 42. 1986-1990 年政府財政支出計画

(C) 進行中プロジェクト、農業、マイナー輸出作物 (輸出作物)

ALLOCATION OF GOVERNMENT CAPITAL EXPENDITURE 1986-1990
(C) Ongoing Projects, Agriculture, Field & Minor Export Crops
(Rs. Million)

Item	1986		1987		1988		1989		1990		1986-1990			
	FA	FC	FA	LC	FA	LC	FA	LC	FA	LC	FC	LC	FA	
Field & Minor Export Crops	354.3	208.3	640.0	263.7	547.8	197.8	653.9	195.3	212.7	3.0	2408.7	781.1	1627.6	868.1
(1) Land Reform Commission	(200)	-	(190)	-	(260.0)	-	(350.0)	-	-	-	(1000.0)	-	(1000.0)	-
(2) Anuradhapura Dry Zone Project	50	45.0	105.0	80.0	100.0	89.0	125.0	115.0	-	-	380.0	170.1	209.9	329.0
(3) N.A.D.S.A.	7.0	-	5.0	-	5.0	-	-	-	-	-	17.0	-	17.0	-
(4) Savanagala Sugar Project	150.0	100.0	225.0	115.0	135.0	50.0	82.0	28.0	-	-	592.0	375.7	216.3	293.0
(5) Paddy Marketing Board (Rice Hill Stores)	10.0	10.0	-	-	-	-	-	-	-	-	10.6	6.0	4.0	10.0
(6) Contribution to Sugar Project	100.0	-	45.0	-	60.0	-	-	-	-	-	205.0	-	205.0	-
(7) Contribution to C.F.C	3.0	-	21.9	12.0	-	-	-	-	-	-	24.9	14.4	10.5	12.0
(8) Agriculture Extension and Adaptive Research Project	17.0	4.2	-	-	-	-	-	-	-	-	17.0	7.3	9.7	4.2
(9) Fruit Crop Assistance Scheme	8.0	-	10.0	-	15.0	-	16.0	-	15.0	-	64.0	-	64.0	-
(10) Other Projects	65.9	17.1	51.4	35.4	49.3	39.0	43.0	39.0	36.0	-	245.6	111.0	134.6	130.5
(11) Diversified Agriculture Research Project	38.6	20.2	17.0	10.0	19.0	11.0	11.0	4.0	-	-	85.6	54.4	10.9	45.2
(12) Financial Assistance to M.E.C.	18.0	-	16.0	-	22.0	-	26.0	-	26.0	-	108.0	-	108.0	-
(13) Ministry	1.4	1.0	0.4	-	0.3	-	0.3	-	0.3	-	2.7	7	2.0	1.0
(14) A.R.T.L.	1.4	1.1	0.2	-	0.2	-	0.2	-	0.2	-	2.2	1.4	8	1.1
(15) A.D.A.	0.5	-	5.0	3.5	4.0	2.5	5.5	5.5	1.0	-	16.0	9.6	6.4	11.5
(16) Sugar Cane Research Institute	5.0	4.0	7.0	6.0	8.0	5.0	4.0	3.0	4.0	3.0	26.0	16.9	9.1	21.0
(17) Agriculture Insurance Board	0.2	-	76.5	-	76.4	-	75.0	-	75.0	-	303.1	-	303.1	-
(18) Freedom from Hunger Campaign Board	3.0	3.0	0.8	0.8	0.8	0.8	0.8	0.8	-	-	5.4	4.8	6	5.4
(19) Rehabilitation and Maintenance of Capital Assets	58.4	-	49.3	-	50.3	-	61.1	-	51.2	-	270.3	-	270.3	-
(20) Acquisition of Equipments	16.9	2.7	4.5	1.0	4.5	0.5	4.0	-	4.0	-	33.9	8.5	25.4	4.2

Provided under the votes of the President

資料 43. 中央農業研究所の年度別支出明細

Annual Expenditure of CARI

(1) Recurrent Expenditure

Unit: Rs. 1,000

Items	1982	1983	1984	1985	1986
1) Establishment					
Salary and Allowances for Labourers, etc.	5556.66	6057.96	5928.30	6716.66	6832.00
Travelling & Subsistence	202.80	188.43	160.00	237.00	232.00
Telephone & Postage	19.19	32.74	31.63	35.35	45.70
Electricity	240.71	279.43	221.67	309.60	400.35
Furnace Oil					
Liquefied Petroleum Gas					
Security Service					
Sectional Total	6019.36	6558.56	6341.60	7298.61	7510.05
2) Secretary					
Board Meeting					
Printing Cost					
Others					
Sectional Total					
3) Supplies					
Stationary	54.95	38.96	43.00	54.50	64.00
Fuel	186.10	215.26	200.53	225.57	250.91
Repairs to Vehicle	71.41	99.14	96.69	116.49	183.96
Building Repair	15.05	15.95	10.83	250.00	500.00
Repairs to Furniture & Office Equipment	4.95	5.71	16.52	17.25	26.33
Others					
4) Others	241.88	274.43	134.25	132.02	161.80
Sectional Total	574.34	649.45	501.82	795.83	1187.00
Total	6593.70	7208.01	6843.2	8094.44	8697.05

(2) Capital Expenditure

Unit: Rs. 1,000

Items	1982	1983	1984	1985	1986
1. Furniture, Office, Equipment, Household items, Books, Exhibits etc.	19.40	-	-	40.75	155.50
2. Vehicles *	-	-	-	-	-
3. Equipment, Machinery and Consumables **	46.35	128.50	160.56	46.00	180.00
4. Farm tools, and other related equipment	101.00	-	32.00	22.00	35.00
5. Buildings and Land development	281.00	542.62	558.80	73.69	115.00
6. Infrastructure and road repairs	-	-	43.68	520.06	25.00
7. Other	210.00	-	-	265.34	366.40
* Money for this item is from the general vote of the Director of Agriculture and Foreign aid Program.					
** Major part was under the Foreign aid and not mentioned here.					
Total	657.75	671.12	795.04	967.84	876.90

資料 44. 植物遺伝資源センター(PGRC)の研究活動計画
● 遺伝資源の収集

Plan of Research Activity of PGRC

Collection of Germplasm

	Main Subjects	Activity
1st Stage (2 years)	Paddy, Coarse grains Grain } Legumes, Root and Tuber } - Gp I Crops, Chillies, Vegetables }	1. Collection of all the recommended varieties and varieties maintained by the local breeders. 2. Collection of indigenous varieties and wild types from different Agro-ecological regions. Most of the indigenous varieties of rice, root and tuber crops have already being collected.
2nd Stage (2 years)	Fiber Crops } Medicinal plants } - Gp II Horticultural Crops } Oil seed Crops }	Continuation of the collection of indigenous varieties of Gp I crops and introduction of germplasm from other countries. Collection of indigenous and presently cultivated varieties. (Gp. II Crops)
3rd Stage (2 years)	Green Manure Crops } Spice Crops, Plantation } - Gp III Crops and other useful crops }	Continuation of the collection of Gp II Crops. Collection of cultivated and wild types. (Gp. III Crops)

資料 45. 植物遺伝資源センター(PGRC)の研究活動計画
● 遺伝資源の保存

Plan of Research Activity of PGRC

Germplasm Preservation

	Main Subjects	Activity
1st Stage (years)	Seeds } Vegetatively } propagated Crops }	Long term storage (30 years) at 1°C Medium term storage (10 years) at 10°C short term storage (5 years) at 15-20°C
2nd Stage (years)		Tissue culture
3rd Stage (years)		(At all stages)

資料 46. 植物遺伝資源センター(PGRC)の研究活動計画

● 遺伝資源の評価

Plan of Research Activity of PGRC

Evaluation of Germplasm

	Main Subjects	Activity
1st Stage (2 years)	Preliminary evaluation	- Formation of working groups to evaluate germplasm. - Morphological characterization of germplasm based on F.A. O. descriptors (Gp. 1 - Crops)
2nd Stage (2 years)	1. Preliminary evaluation 2. Evaluation for specific characteristics	- Morphological characterization of germplasm (Gp. I, II, III crops) - Chemo taxonomic studies. - Evaluation for disease and insect resistance, tolerant to drought, low temperature, salinity, photosynthetic efficiency, Nitrogen fixing ability of grain legumes, quality and nutritive value (evaluation will be done with close co-operation of different divisions of 'C.A.R.I.' and other research Centres.)
3rd Stage (2 years)	"	- Technical meetings to exchange information on germplasm and their use in crop improvement programmes.

資料 47. 植物遺伝資源センター(PGRC)の研究活動計画

● 作物別遺伝資源評価項目

Items of Genetic Evaluation

Crops	Evaluation Items
1. Rice	Yield, resistance to pest and diseases, tolerance to low T°, drought, salinity, grain quality and photosynthetic efficiency.
2. Coarse grains	Yield, resistance to pest and diseases, tolerance to drought and ill drained condition, and grain quality
3. Grain legumes	Yield, plant type resistance to pest and diseases, drought tolerance, nitrogen fixation ability, photosynthetic efficiency and quality.
4. Root and Tuber Crops	High protein and starch, adaptability, high yield, pest and diseases resistance, acceptable quality, photosynthetic efficiency under shade.
5. Vegetables	Specific adaptabilities to different growing environments, insect and disease resistance, medicinal properties of local vegetables, keeping and eating quality.
6. Chillies	Resistance to pest and diseases, specific adaptation to stress environments, quality.
7. Oil Crops	Oil content, yield, drought tolerance, pest and disease resistance.
8. Industrial Crops	Yield and adaptability
9. Fruit crops	Quality, keeping quality, resistance to pests and diseases etc.

資料 48. 植物遺伝資源センター(PGRC)の研究活動計画

●組織培養

Plan of Research Activity of PGRC

Tissue Culture

	Main Subjects	Activity
1st Stage (2 years)		<ul style="list-style-type: none"> * Perfection of cell tissue and organ culture technology for multiplication of crop species. * Perfection of methods for <u>in vitro</u> preservation (short term, medium term and long term) of tissue cultures, meristem tips etc.
2nd Stage (2 years)	TISSUE CULTURE (Cells, tissues & organs)	<ul style="list-style-type: none"> * Elimination of virus through meristem culture technology. * Development and utilization of <u>in vitro</u> culture technology for international exchange of germplasm (specially vegetatively propagated crops) under disease free conditions.
3rd Stage (2 years)		<ul style="list-style-type: none"> * Application of tissue culture technology for crop improvement. (through mutagenic sources, haploid technique etc.)

資料 49. 植物遺伝資源センター(PGRC)の研究活動計画

●情報管理

Plan of Research Activity of PGRC

Data & Information Recording and Processing

	Main Subjects	Activity
1st Stage (2 years)		<p>All Data on germplasm stored in the Bank will be computerised. Data will also be recorded and stored in File Cards.</p> <p>Publication of Bulletins indicating important characteristics of germplasm stored in the Genebank for use by Breeders and other researchers.</p>
2nd Stage (2 years)		(at all stages)
3rd Stage (2 years)		(at all stages)

資料 50. 関連資料

- スリランカ国における農業に関する文献名

References:

References materials related to Agriculture in Sri Lanka

<u>(1) Agricultural Development Strategy</u>	<u>Writer or Publisher</u>
1) Public Investment 1986-1990	National Planning Division Ministry of Finance and Planning, SRI LANKA May 1986
2) Public Investment 1984-1988	National Planning Division, Ministry of Finance and Planning, SRI LANKA May 1984
3) National Agriculture, Food and Nutrition Strategy 1984	National Planning Division, Ministry of Finance and Planning, SRI LANKA June 1984
4) Crop Agriculture Development Strategy: Policy Issues and Implementation Measures.	Mr. N.V.K.K. Weragoda Secretary of Ministry of Agriculture Development and Research.
5) Nutrition Strategy: A contribution to the National Agriculture, Food and Nutrition Strategy.	Ministry of Plan Implementation Oct. 1984
6) Irrigation, Land and Forestry Development Strategy: A contribution to the National Agriculture, Food and Nutrition Strategy.	Ministry of Lands and Land Development Oct. 1984
7) Rice Self-Sufficiency and Beyond: Export Prospects: National Agriculture, Food and Nutrition Strategy, Special Report 1.	National Planning Division, Ministry of Finance and Planning. Nov. 1984
8) Agricultural Production and Future Strategy:	World Bank Research Proposals - Draft
<u>(2) Agricultural Research</u>	
1) Report to the Government of Sri Lanka.	Agricultural Research Group: ISNAR June 1984
2) Report on the Establishment of the National Agricultural Science Center.	Ministry of Planning Implementation Oct. 1984
3) Sri Lanka Agricultural Research Project:	National Planning Division, Ministry of Finance and Planning. June 1984

(3) Present Situation of Agricultural Research

- 1) Agricultural Research Organization and Priorities. Dr. H.M.H. Herath
Depty Director of Agriculture
Department: Ministry of Agricultural Development and Research.
- 2) Linkages of Agricultural Extension with Research and Agricultural Education: Mr. N.V.K.K. Weragoda
Secretary of Ministry of Agricultural Development and Research.
Oct. 1985
- 3) Rice Research & Production and Strategy for Development in Sri Lanka. Dr. G.W.E. Fernando
Director of Department of Agriculture, Ministry of Agricultural Development and Research.
Jan. 1985
- 4) Problems and Potentials of Rice Cultivation in the Wet Zone. Dr. S.D.G. Jayawardene
Regional Agricultural Research Centre,
Ministry of Agricultural Development and Research.
- 5) An Analysis of the Problems in the Transfer of Technology of High Yielding Varieties in Sri Lanka. Mr. N.F.C. Ranaweera
Division of Agricultural Economics and Projects Department of Agriculture.
- 6) Research and Development Strategy for Increased Production of Food Legumes and Coarse Grain in Sri Lanka. (Country Report) Mr. M.H.J.P. Fernando
Depty Director of Agricultural Research Station, Maha Illuppallama.
1984
- 7) Sri Lanka Journal of Agricultural Sciences: Special Issue on Winged Bean. National Agricultural Society of Sri Lanka
Vol. 23, No.1
1986
- 8) Research Highlights
 - a) No.10 August, 1982
 - b) No.11 September, 1982
 - c) No.12 February, 1983
 - d) No.13 April, 1983
 - e) No.14 June, 1983
 - f) No.15 October, 1983
 - g) No.16 1983
 - h) No.18 May, 1984
 - i) No.19 1984
 - j) No.20 1984
 - k) No.22 1985
 - l) No.25 1986

- | | |
|------------------------------------------------------------------------------|-------------------------|
| 9) a) National Co-ordinated Rice
Varietal Trials 3 Month Age class | March 1986 |
| b) National Co-ordinated Rice
Variety Trials 4 - 4-1/2
Month Age class | March 1986 |
| 10) Grain Yield and Agronomic Data
of Eight Local Varieties of Maize. | Rainy Season of 1981/82 |

(4) Present Situation of Genetic Resources

- | | |
|---------------------------------------------------------------------------------------------------------------------------------------------------------------------------------------|--------------------------------------------------------------------------------------------------------|
| 1) Progress of Rice Varieties
Improvement in the Dry and Inter-
mediate Zones of Sri Lanka. | D. Senadhira et.al.
Central Rice Breeding Station,
Bathalagoda. |
| 2) Development of Rice Varieties:
Rice Research & Production and
Strategies for Development in
Sri Lanka. | Dr. G.W.E. Fernando
Director of Department of
Agriculture.
June 1985 |
| 3) Rice Breeding Objectives for the
Respective Edaphic Regimes,
Agricultural Extension and
Adaptive Research Project. | Research Division
Department of Agriculture |
| 4) Problems of Evaluating and
Utilizing Crop Genetic Resources
to meet Specific Breeding
Objectives. | G. Jayawardena et.al.
Central Agricultural Research
Institute, Department of
Agriculture. |
| 5) Conservation of Food Crop Genetic
Resources: | S.D.G. Yayawardena et.al.
Central Agricultural Research
Institute, Department of
Agriculture. |
| 6) National Germplasm Bank, Germplasm
Preservation, Conservation and
Utilization: Extracted from Report
on the Establishment of the National
Agricultural Service Center. | 1984 |

(5) Overseas Corporation on Genetic Resources

- | | |
|----------------------------------------------------------------------------------------------------------------------------------------------------|----------------------------------|
| 1) Contract between the Government
of Sri Lanka through its Department
of External Resources and Inter-
national Rice Research Institute. | May 19, 1977 & May 23, 1977 |
| 2) Rice Germplasm Collection in
Sri Lanka. | S. Balendira
IRRI, March 1979 |
| 3) List of Accession in the IRRI
Germplasm Bank | IRRI Germplasm Centre. |

4) Report of Trip to Sri Lanka

I.R. Denton, IRRI
1984

(6) Statistics

1) Sri Lanka Census of Agriculture
1982.

Department of Census and
Statistics, Ministry of Plan
Implementation.

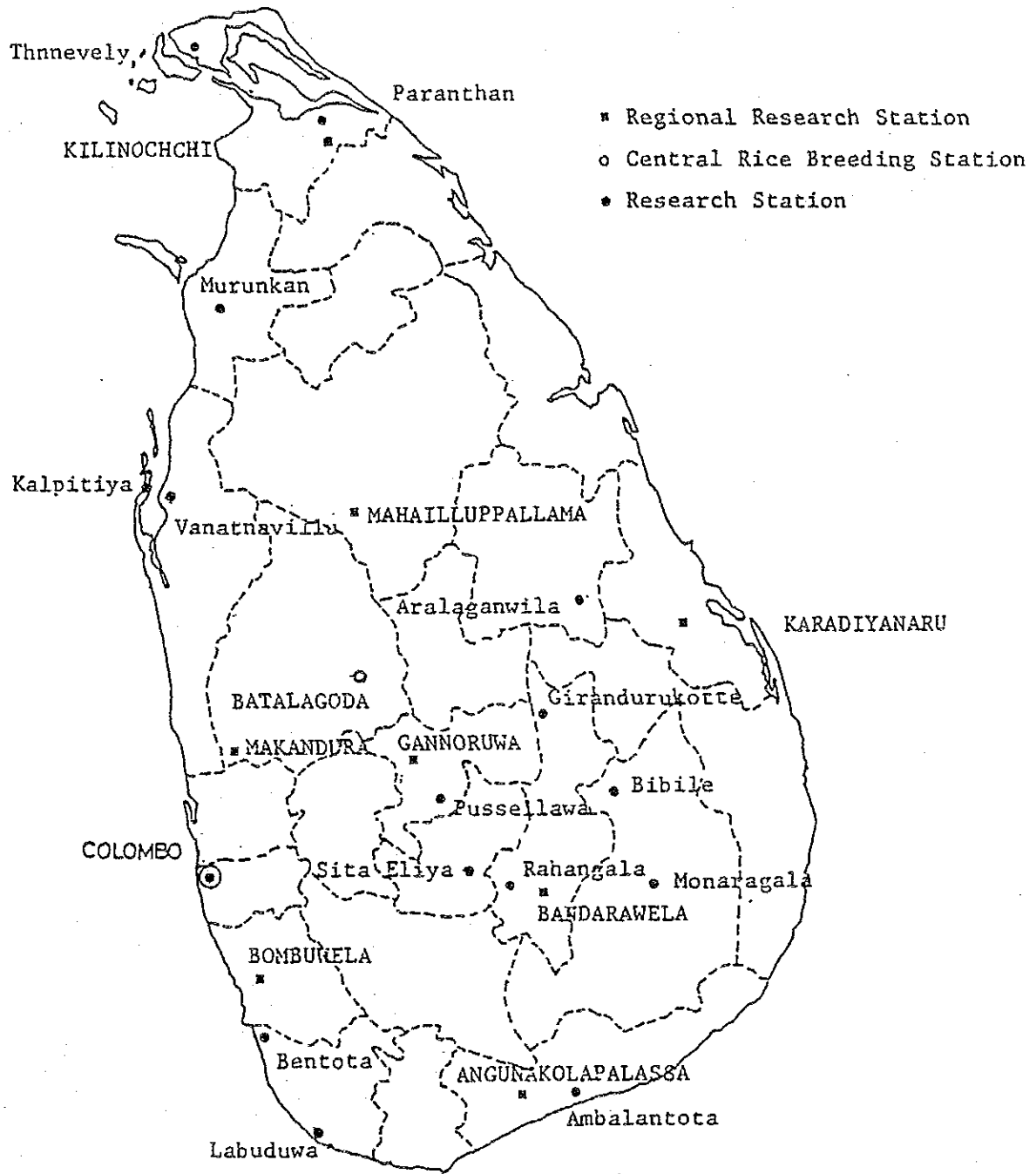
2) Statistical Pocket Book of the
Democratic Socialist Republic
of Sri Lanka 1985

Department of Census and
Statistics, Ministry of Plan
Implementation.

3) Agricultural Statistics of
Sri Lanka
1951/52 - 1980/81

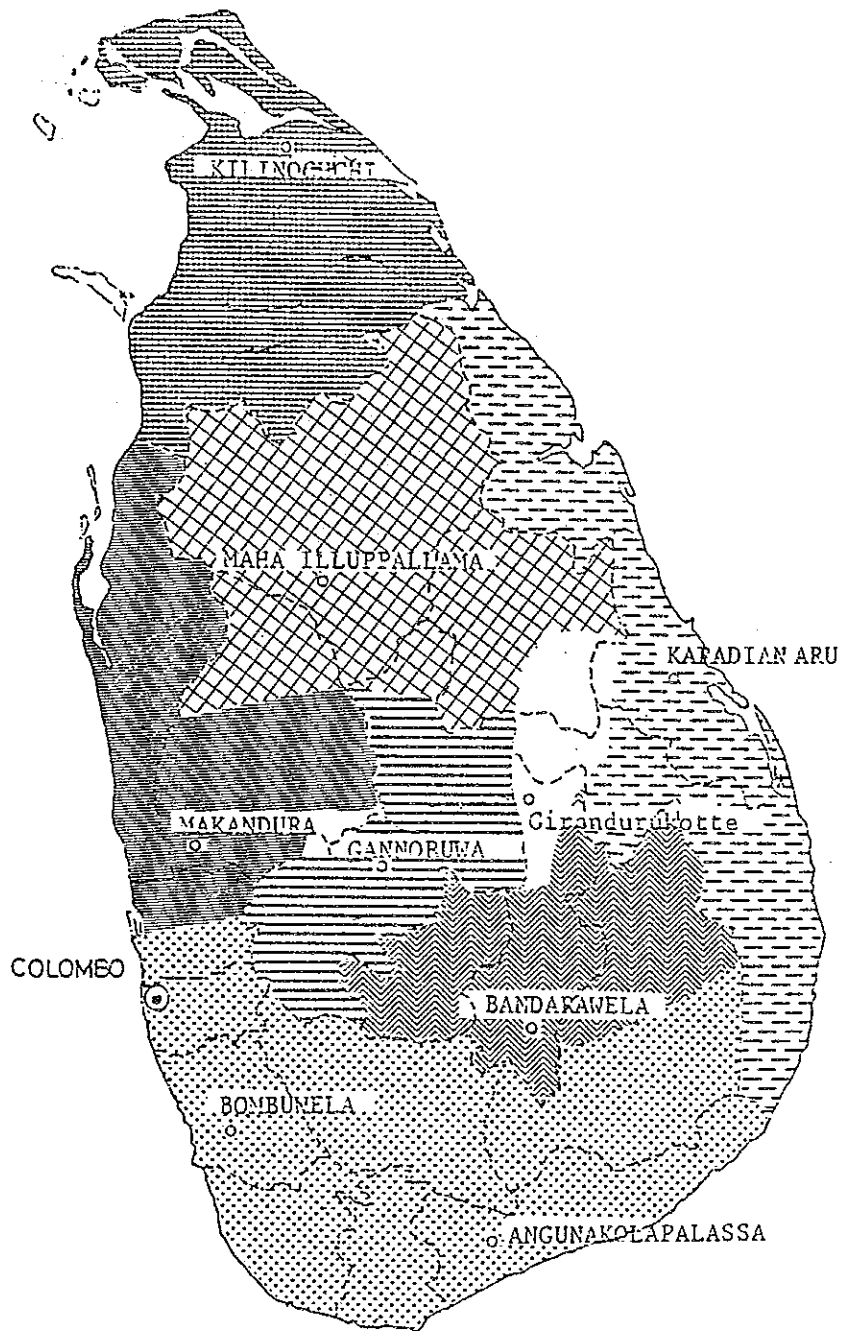
Ministry of Agricultural
Development and Research.
Aug. 1981

資料 51. 農業局所属農業研究機関の所在地

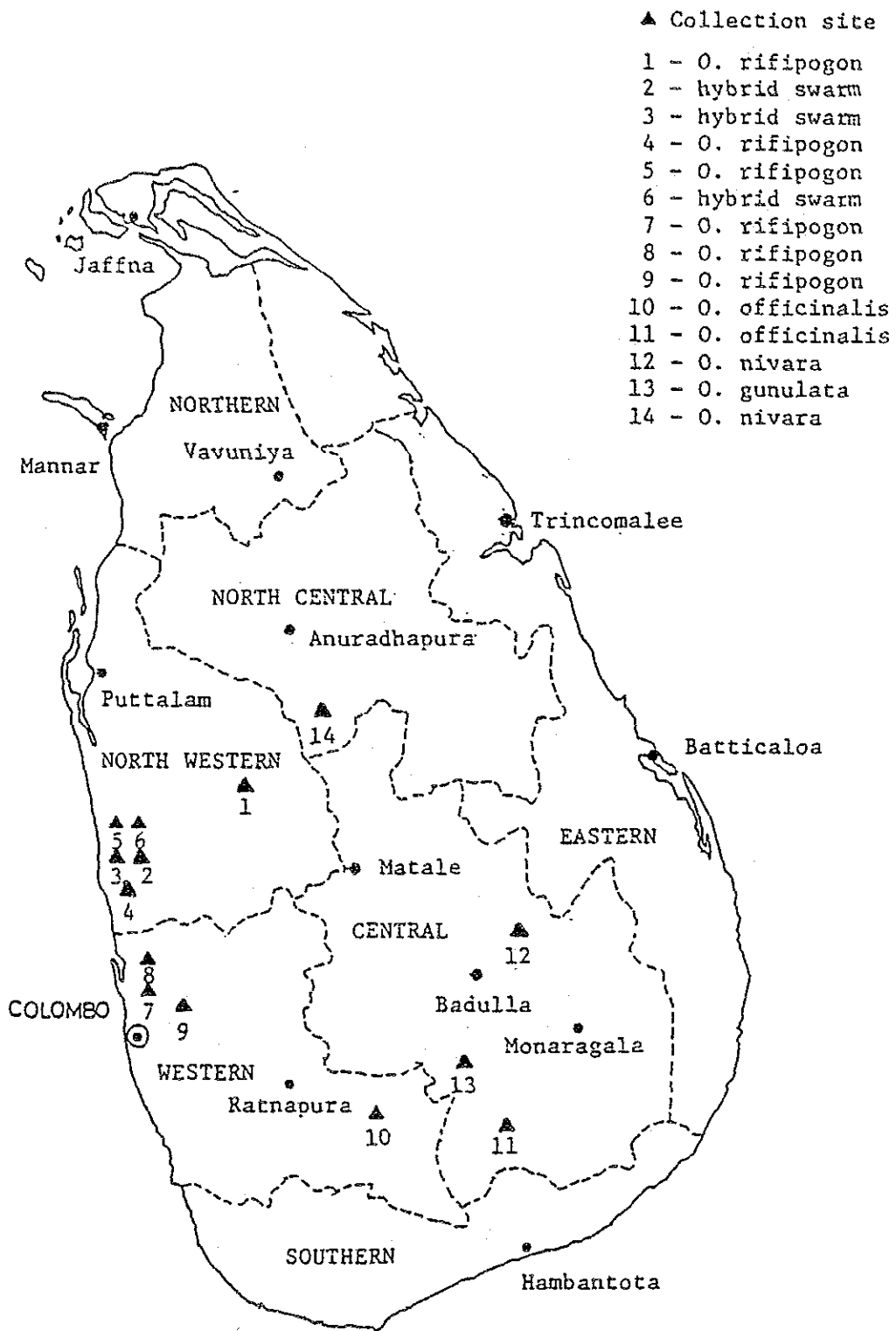


AGRICULTURAL RESEARCH STATIONS
 DEPARTMENT OF AGRICULTURE
 SRI LANKA

資料 52. 9ヶ所の地域農業センターの所在地とその管轄地域

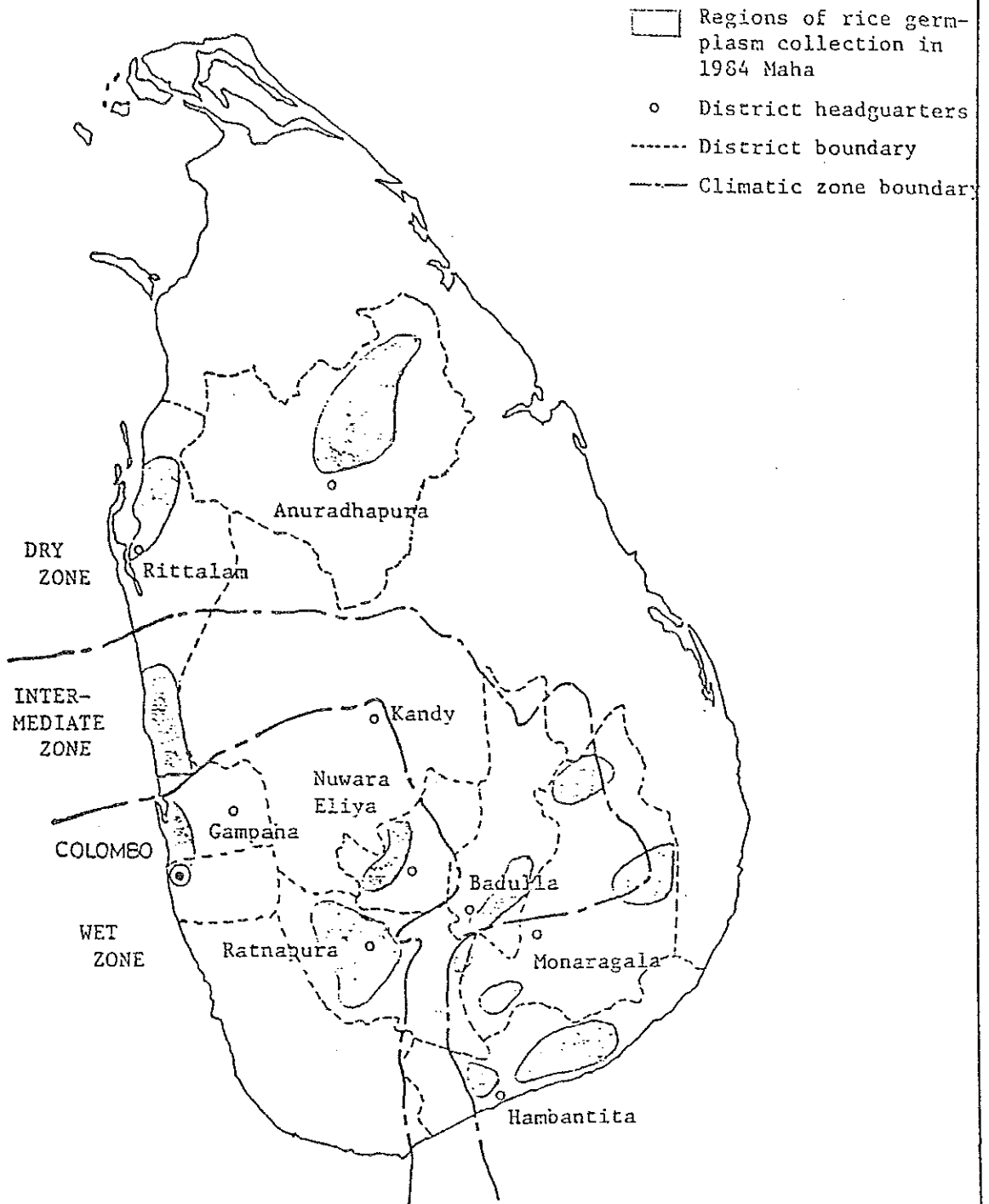


MAP SHOWING NINE REGIONAL RESEARCH CENTRES
AND THEIR AREA OF OPERATION

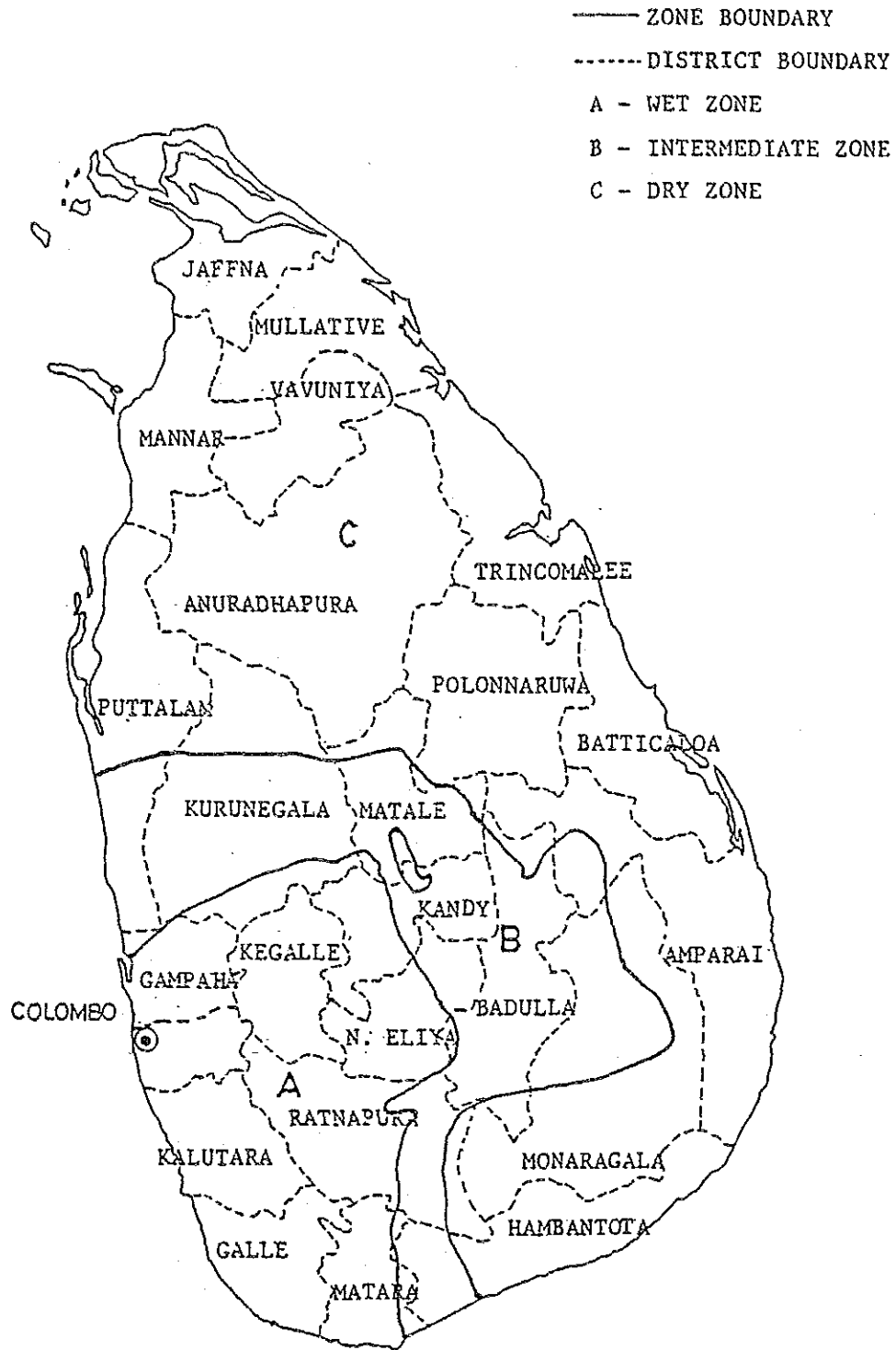


Map of Sri Lanka showing collection sites of wild *Oryza* species during 1984 Maha.

資料 54. 1984年MAHA期に在来品種を収集した地域



Map of Sri Lanka showing areas of collection of traditional varieties during 1984 Maha.



ZONAL AND DISTRICT BOUNDARIES OF SRI LANKA

JICA