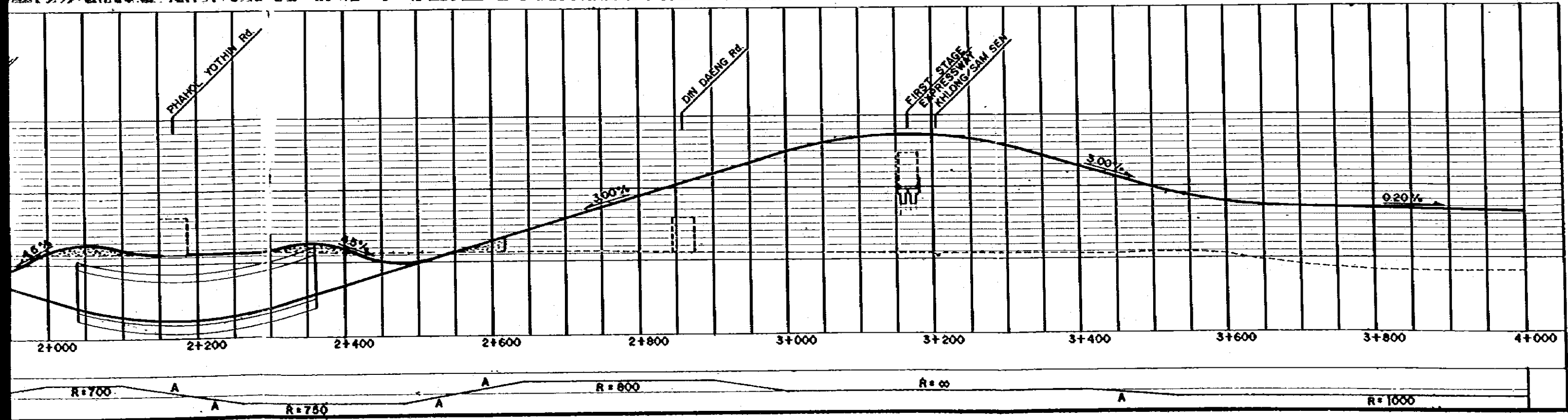
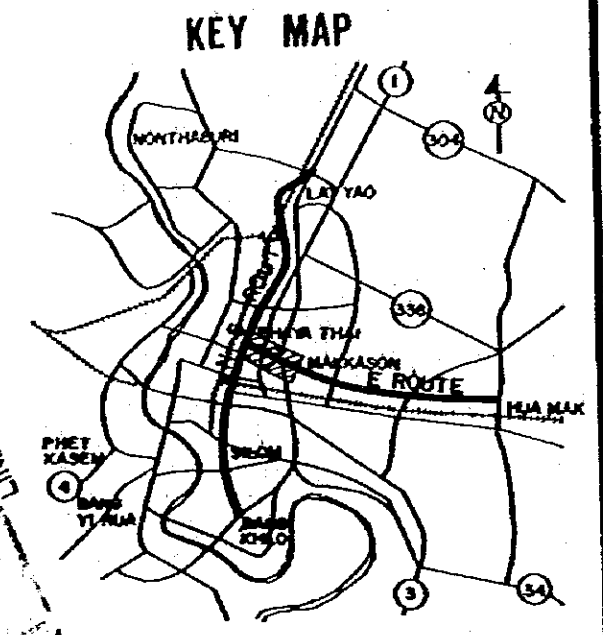
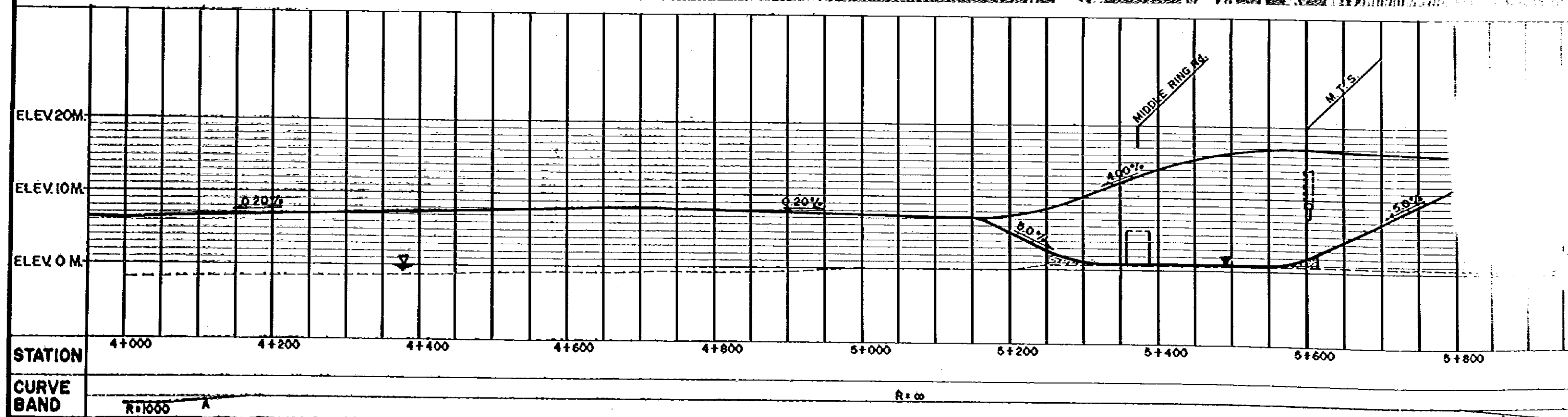
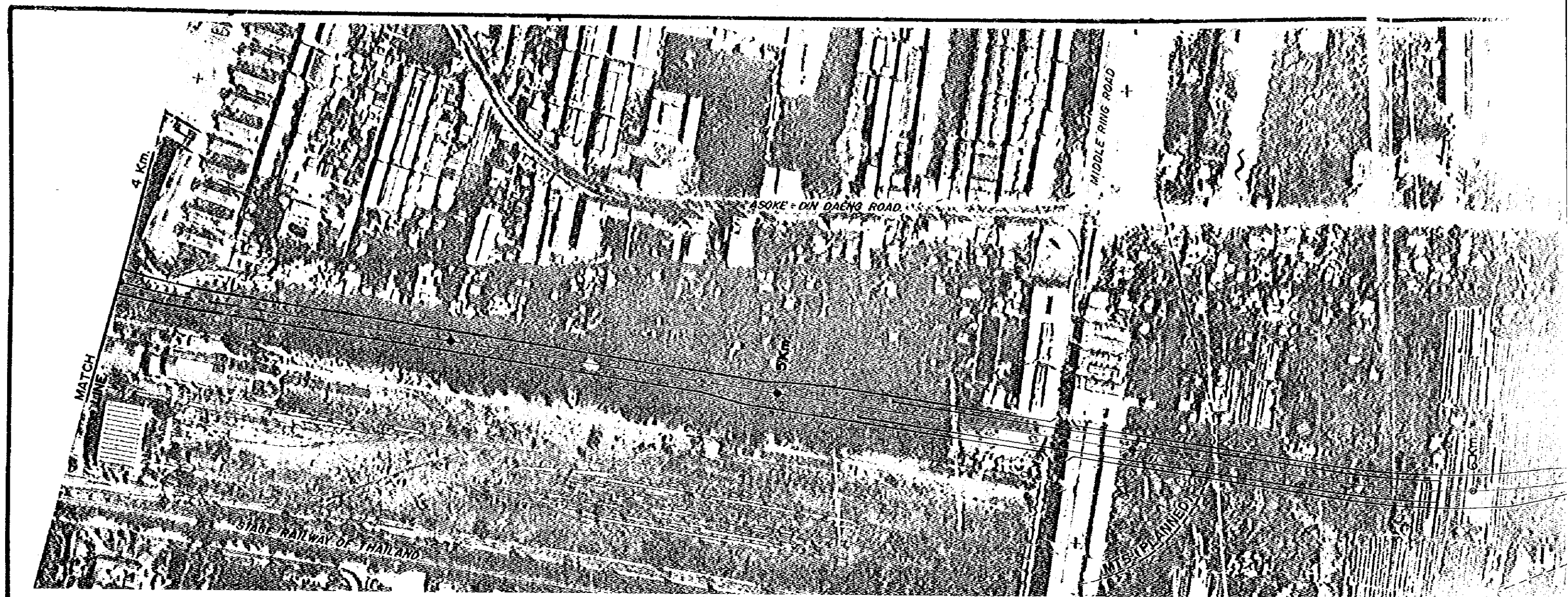
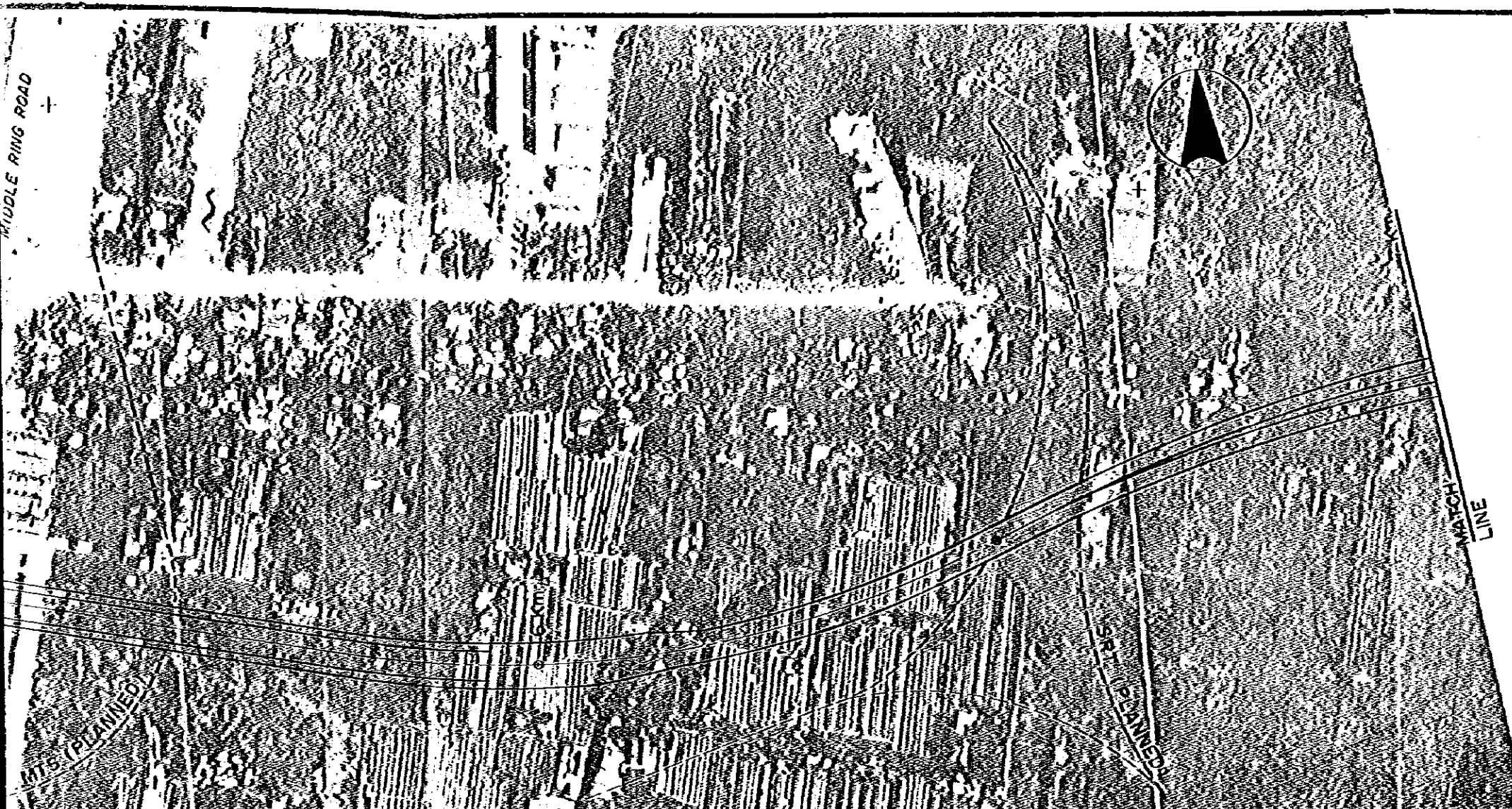


THE SECOND STAGE EXPRESSWAY SYSTEM
IN THE GREATER BANGKOK

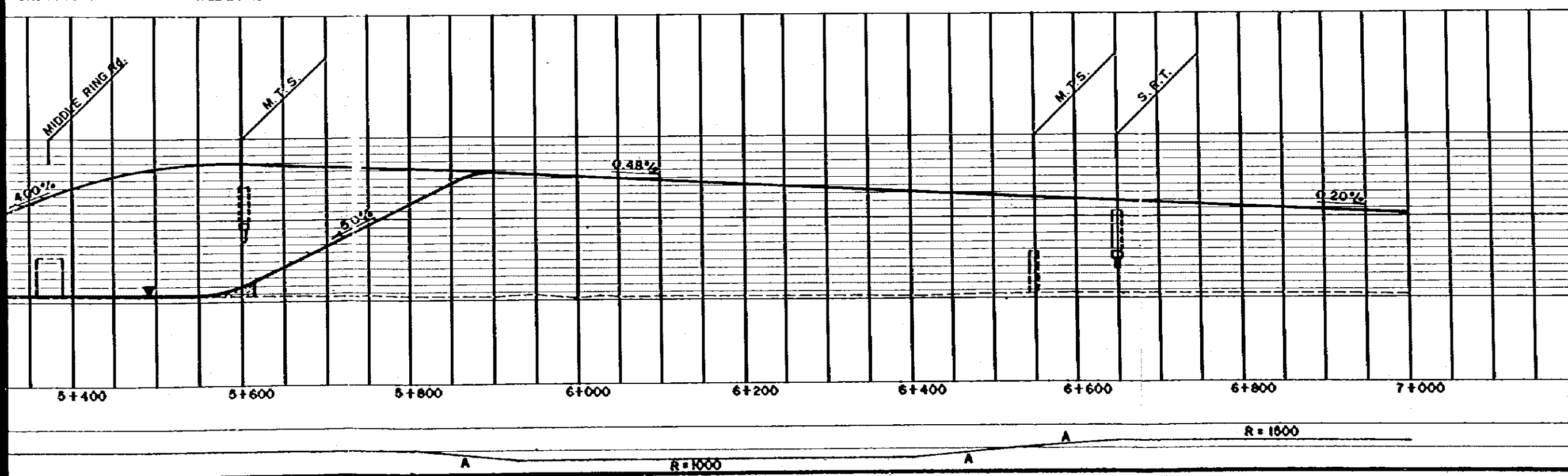
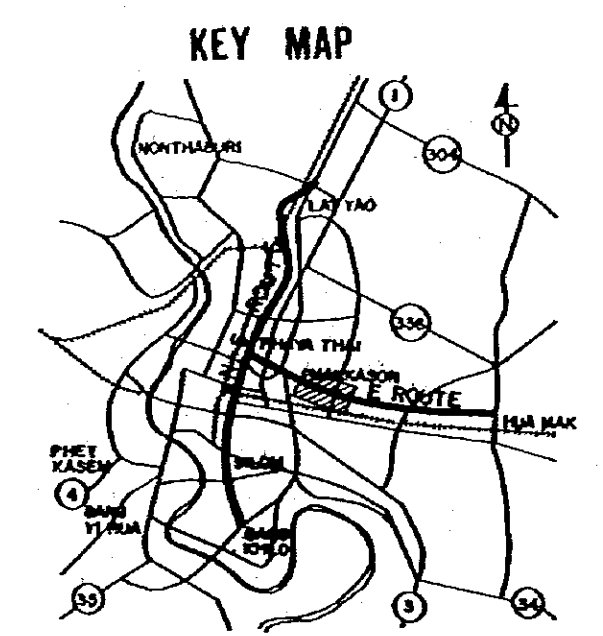
SCALE 1: 600 1: 6000	E ROUTE, PLAN AND PROFILE (STA. + 800 - STA. 4+000)	Dwg. No. 11
----------------------------	--	----------------

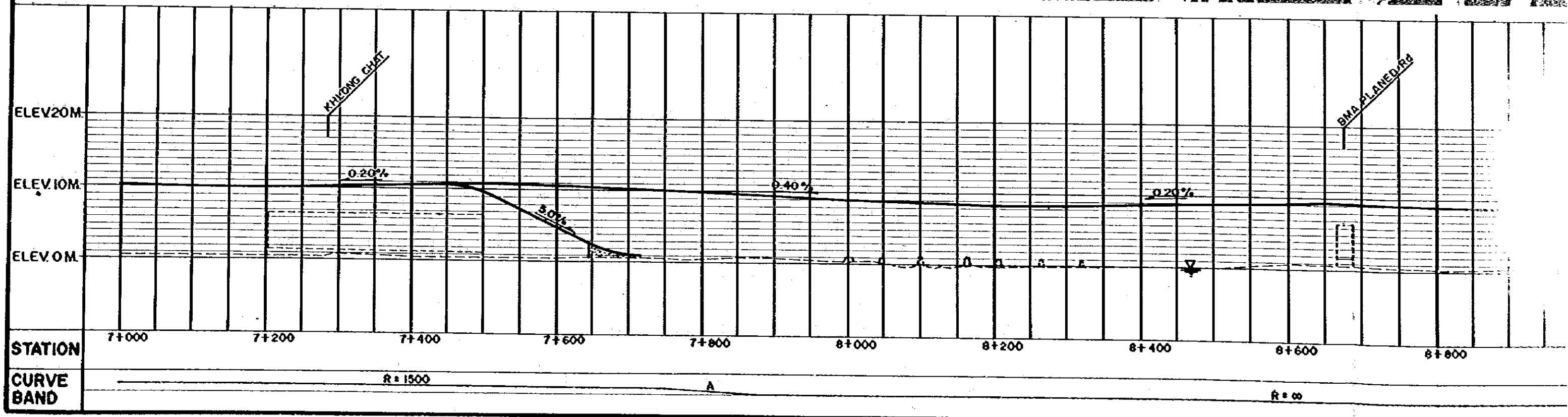
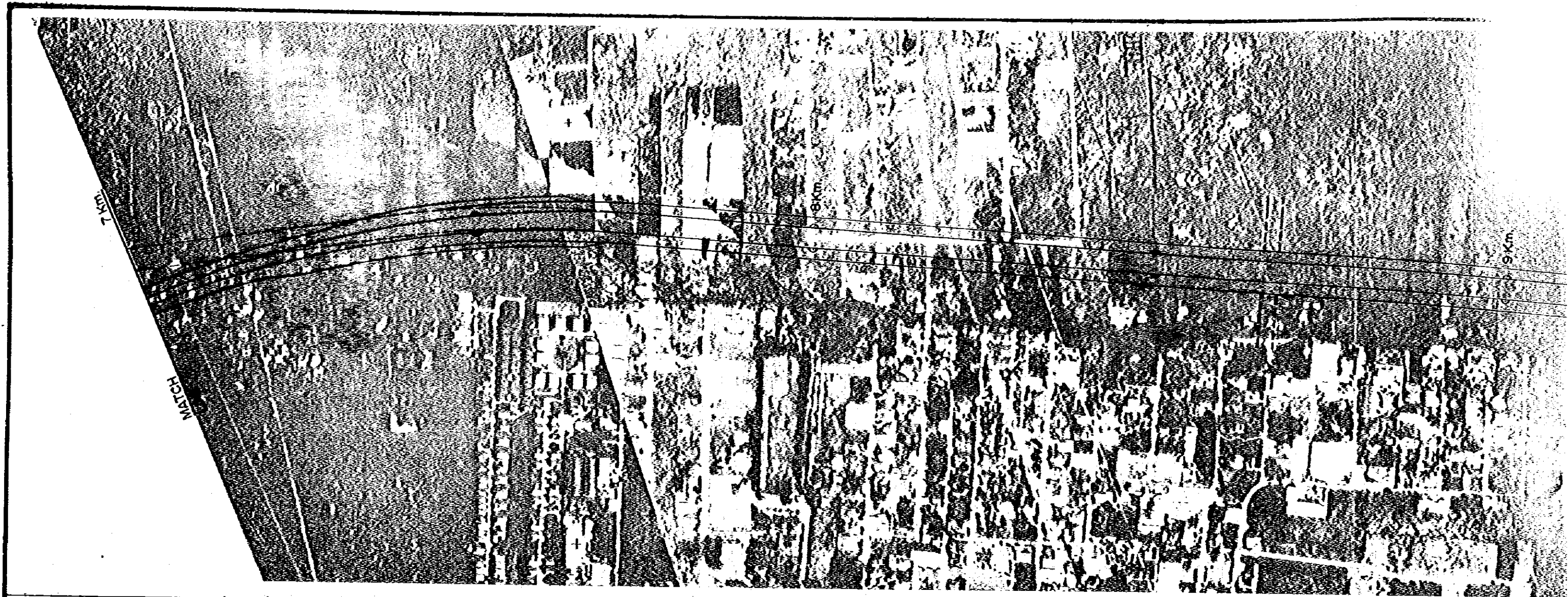


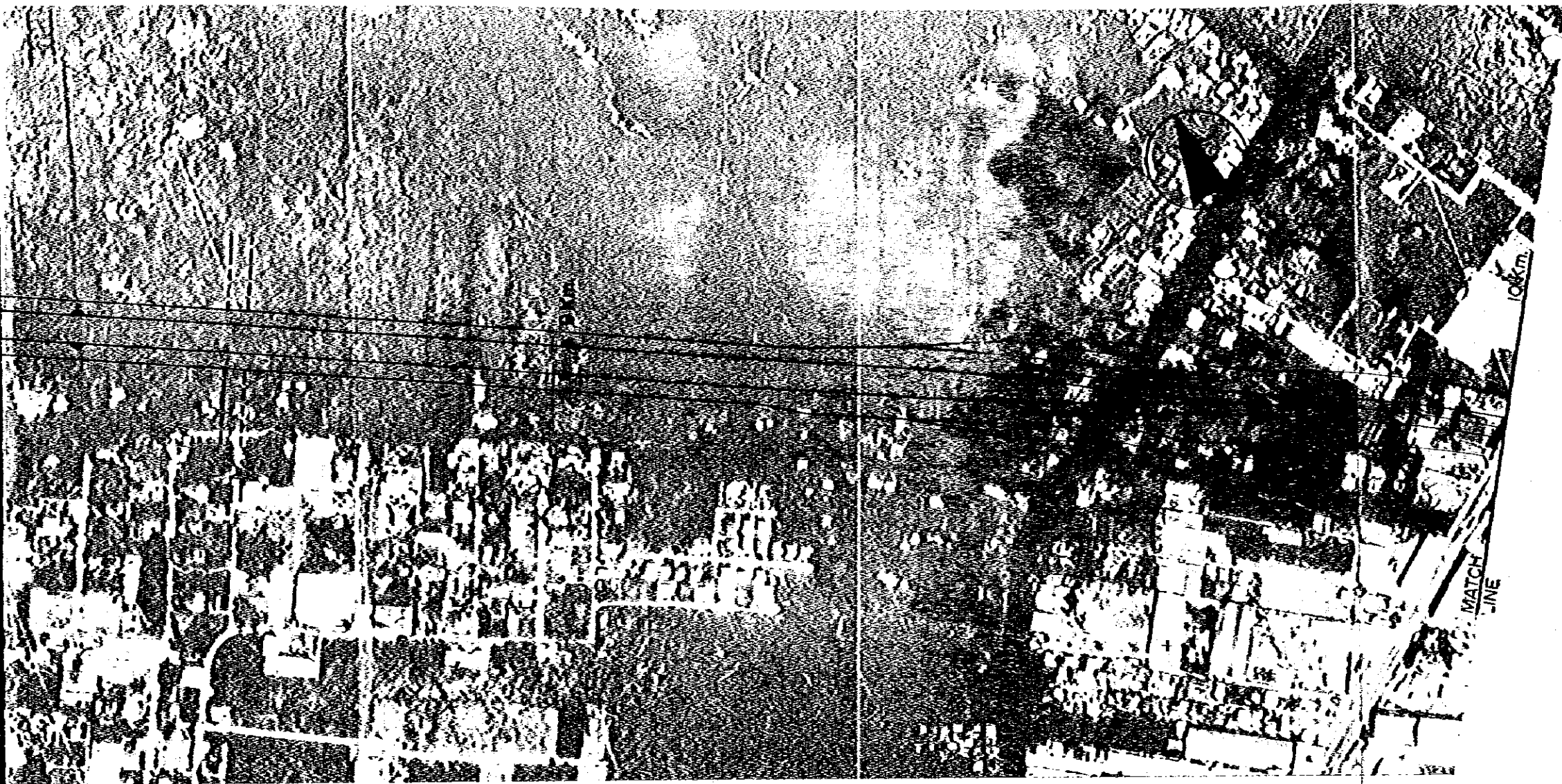




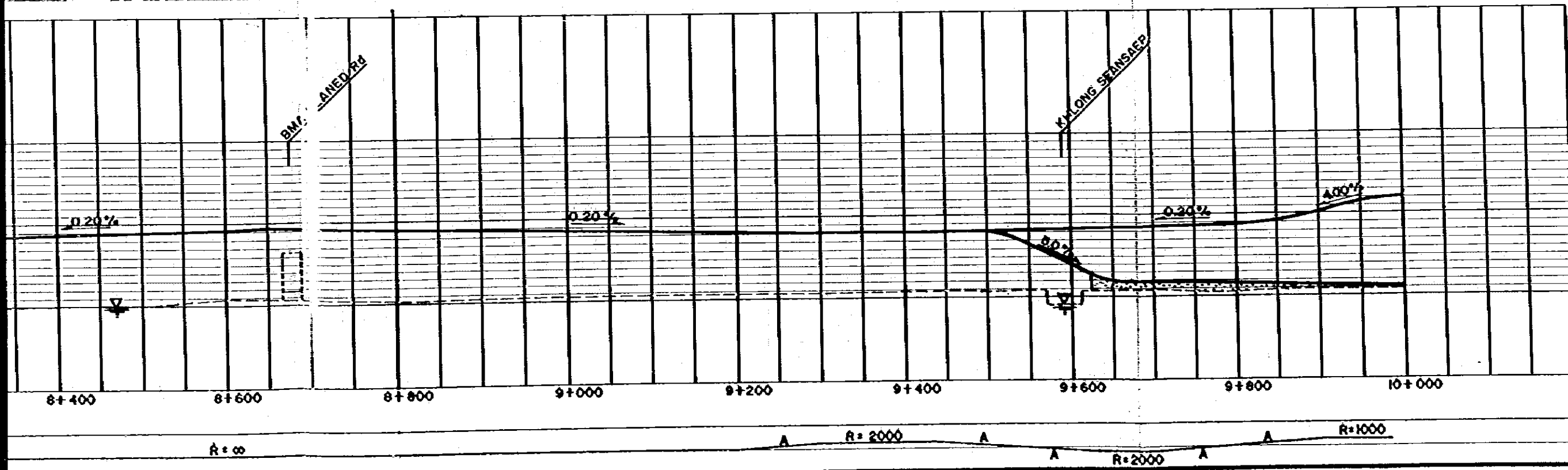
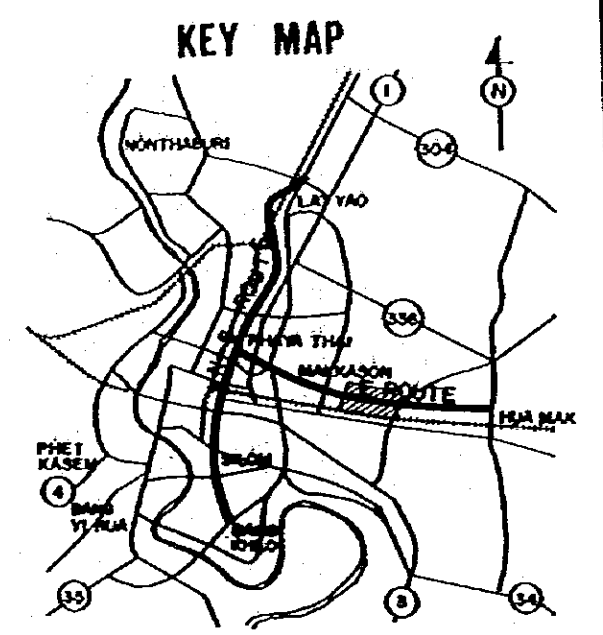
THE SECOND STAGE EXPRESSWAY SYSTEM IN THE GREATER BANGKOK		
SCALE 1:500 1:6000	E ROUTE, PLAN AND PROFILE (STA. 4+000 - STA. 7+000)	Dwg. No. 12

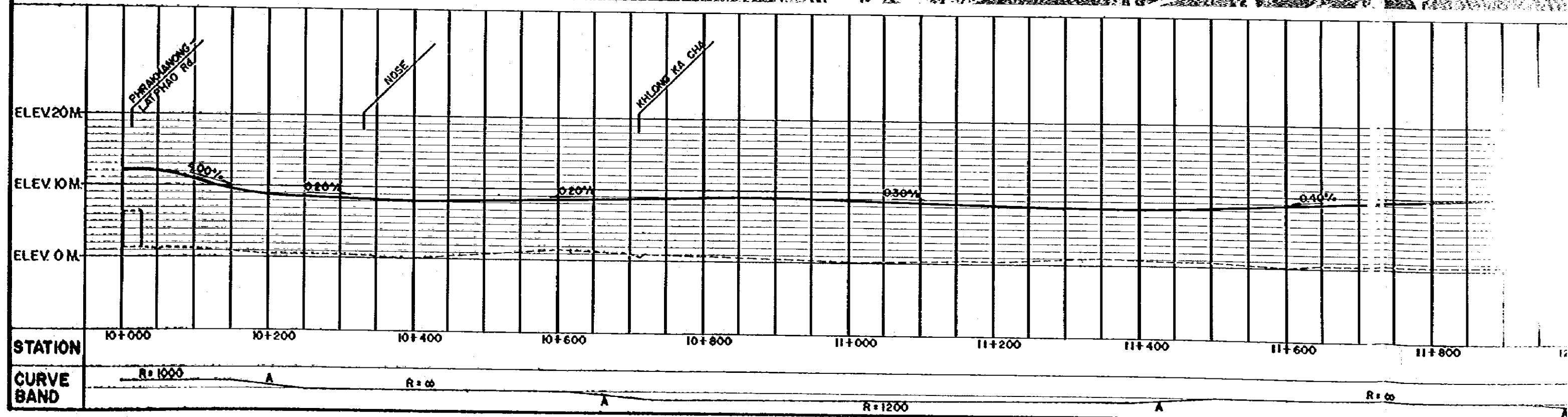
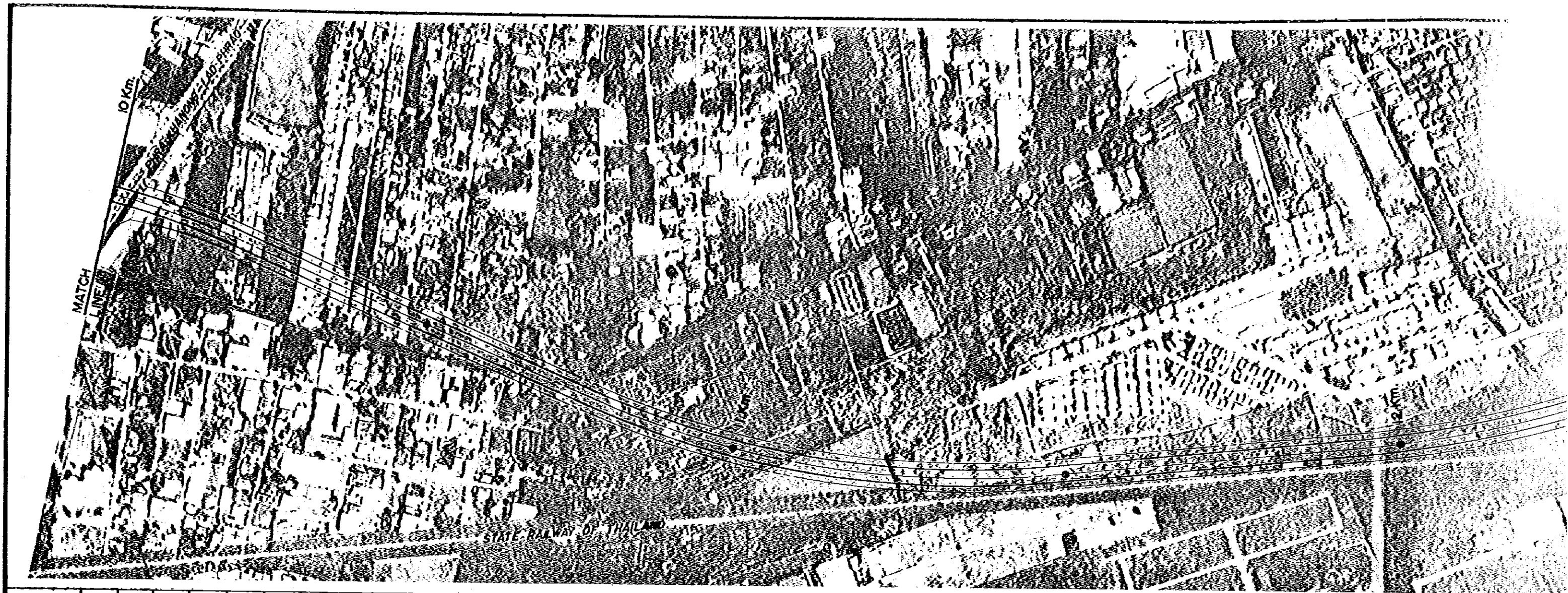




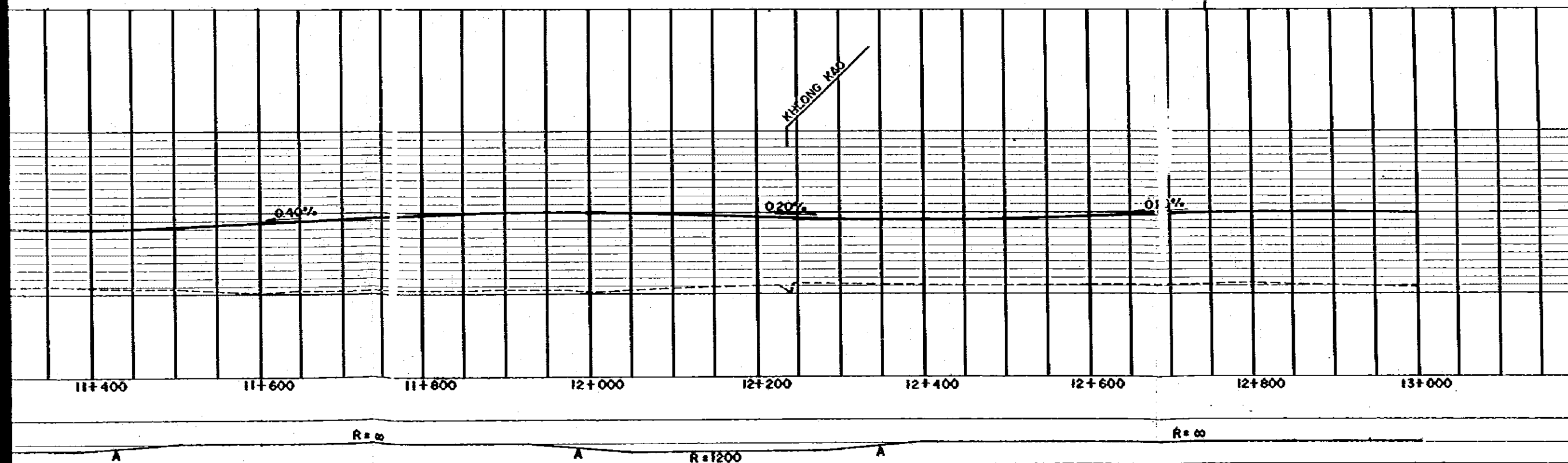
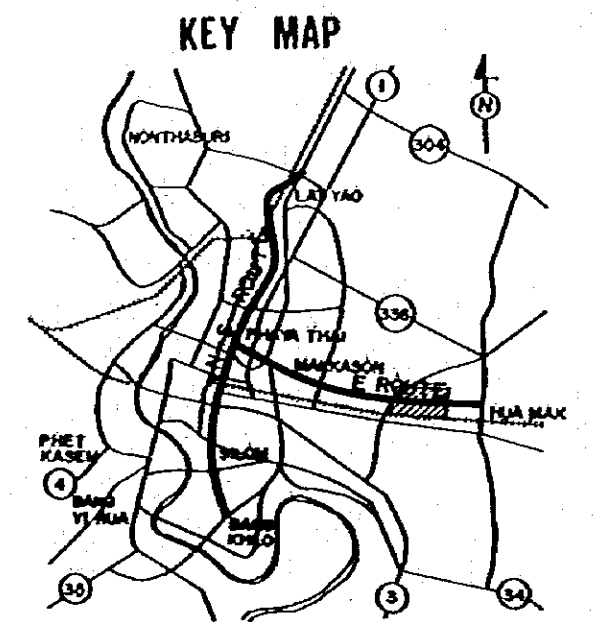


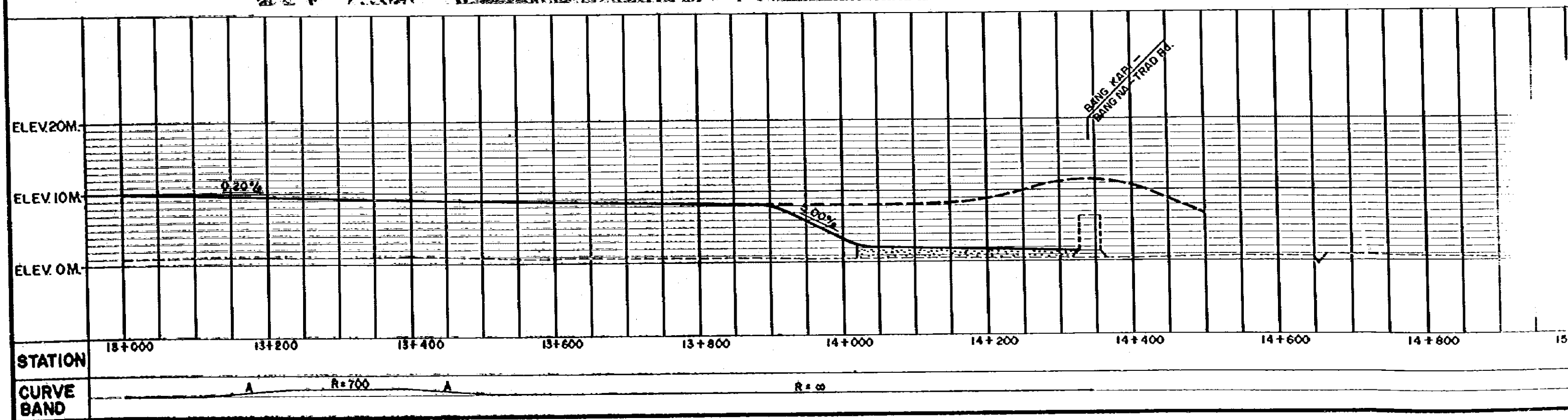
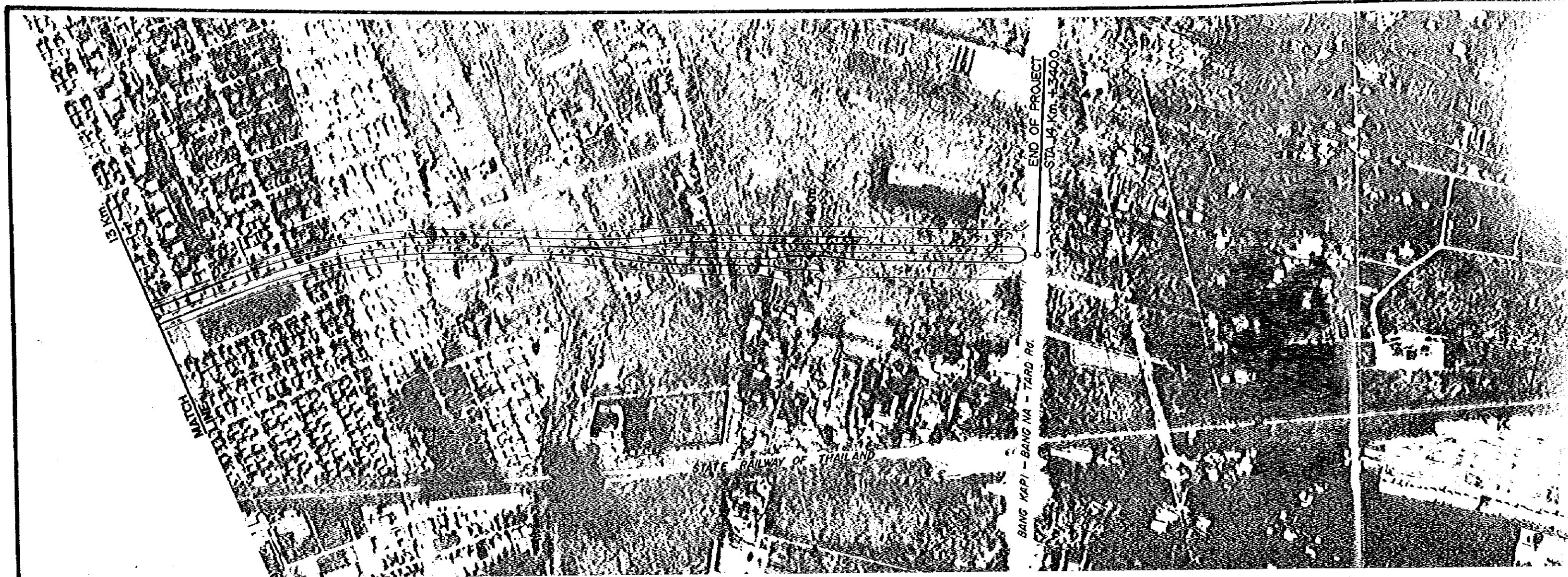
THE SECOND STAGE EXPRESSWAY SYSTEM IN THE GREATER BANGKOK		
SCALE 1:500 1:6000	E ROUTE, PLAN AND PROFILE (STA. 7+000 STA. 10+000)	Dwg. No. 13

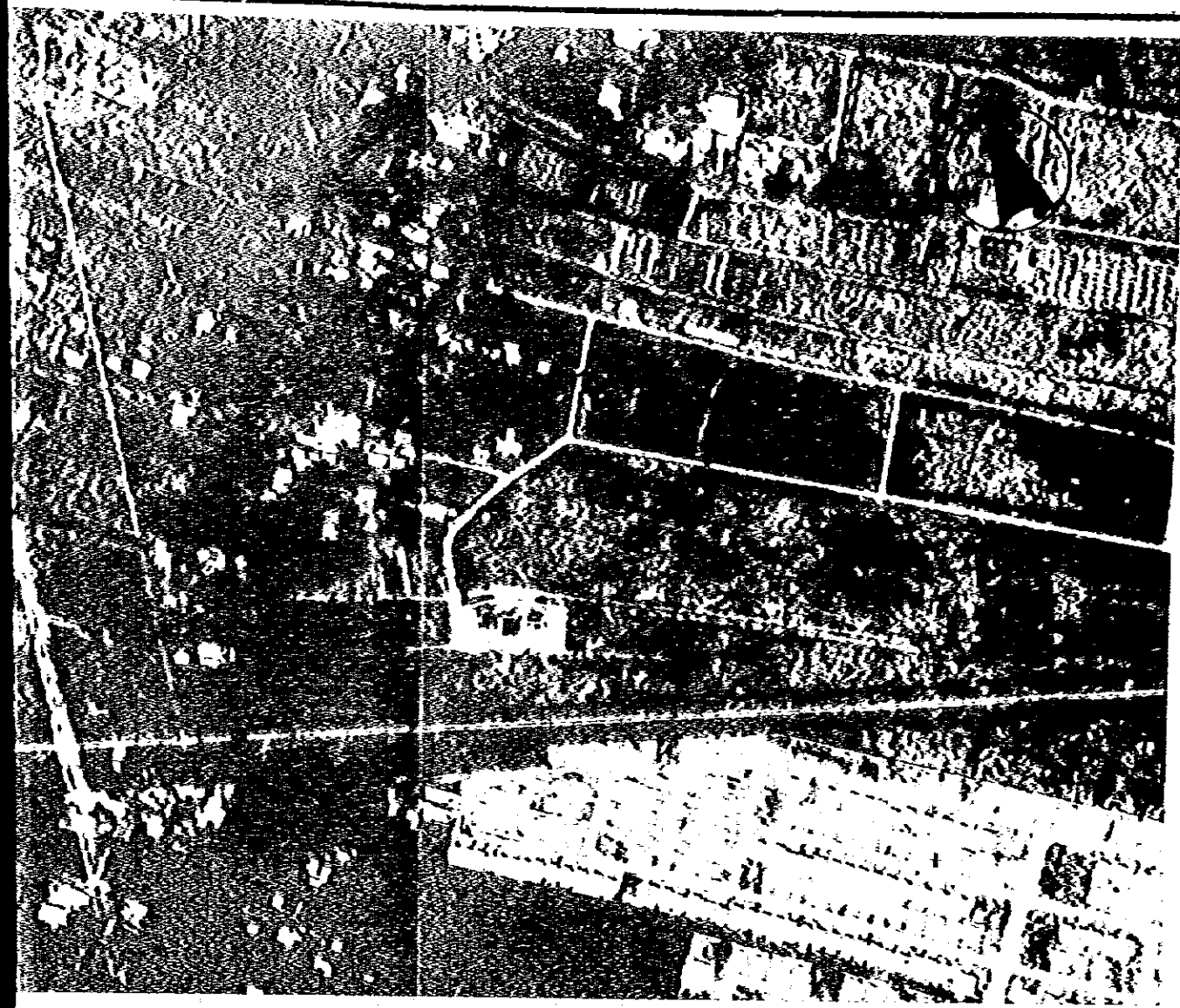




SCALE	E ROUTE, PLAN AND PROFILE (STA. 10 + 000 STA. 13 + 000)	Dwg. No. 14
-------	--	----------------







THE SECOND STAGE EXPRESSWAY SYSTEM IN THE GREATER BANGKOK		
SCALE 1:500 1:5000	E ROUTE, PLAN AND PROFILE (STA. 13+000 - STA. 15+050)	Dwg. No. 15

