

# タイ国バンコック高速道路建設計画調査

## 報告書

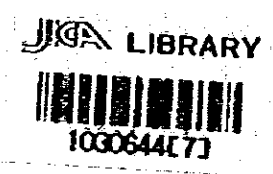
### 図面集

昭和58年11月

国際協力事業団

W22  
61.4  
SDF-3  
LIBRARY

86-  
83-135(3/3)



# タイ国バンコック高速道路建設計画調査

## 報告書

### 図面集

昭和58年11月

国際協力事業団

国際協力事業団	
受入'84.3.-8 月日	L/22
登録No. 10003	61.4 SDF-3

## DRAWING SCHEDULE

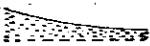
INDEX OF SHEETS	SCALE	TOTAL NUMBER OF SHEET
MAP OF PROJECT AREA AND LOCATION	1 : 100,000	1
TYPICAL CROSS SECTIONS	1 : 200	2
PLANS AND PROFILES	H = 1 : 5,000 V = 1 : 500	12
INTERCHANGE	1 : 3,000 1 : 500	2
TYPICAL ARRANGEMENT OF ON OFF RAMPS	1 : 2,000 1 : 200	1
AT-GRADE INTERSECTIONS	1 : 1,000 1 : 200	4
TOLL PLAZA	1 : 1,000 1 : 200	1
STANDARD VIADUCT ARRANGEMENT	1 : 300 1 : 200	2
TYPICAL STRUCTURES	1 : 300 1 : 200	2
	TOTAL	27

### LEGEND :

PLAN

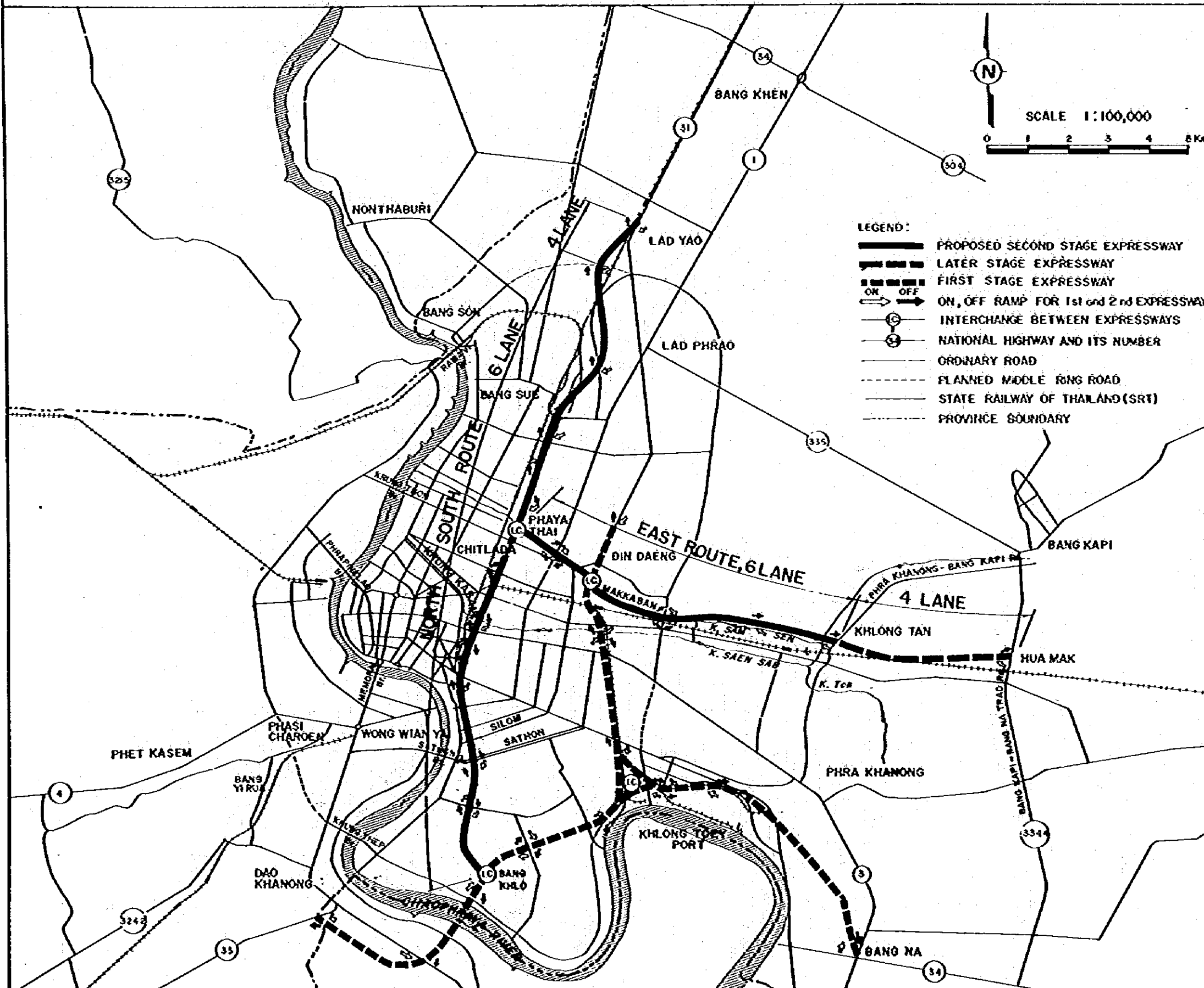
- Center Line of Project Road
- Boundary Line of Right of Way
- ⊕ Station ( Every Five Hundred Meters)

### PROFILE

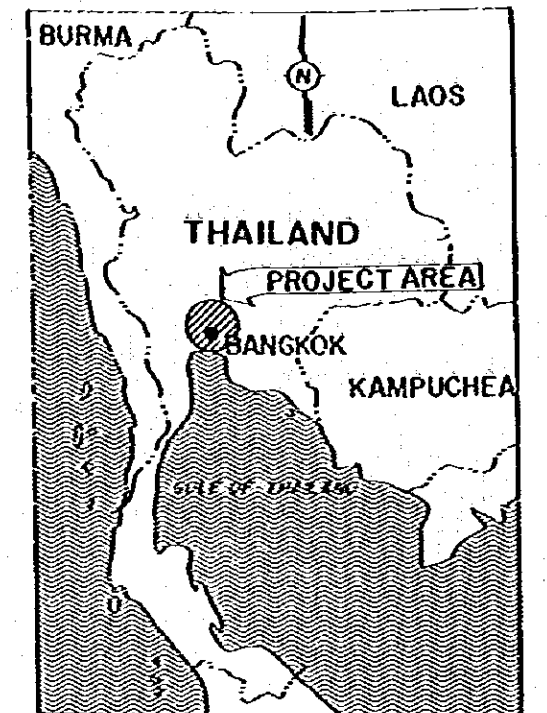
- Proposed Gradient Line
- Existing Ground Height
-  Ground Level Section
- ▼ Toll Gate
- R Radius
- A Parameter of Clothoid Curve

# MAP OF PROJECT AREA

THE SECOND STAGE EXPRESSWAY SYSTEM IN GBA		
SCALE 1:100,000	MAP OF PROJECT AREA AND LOCATION	Dwg. No 1



## LOCATION MAP (THAILAND)

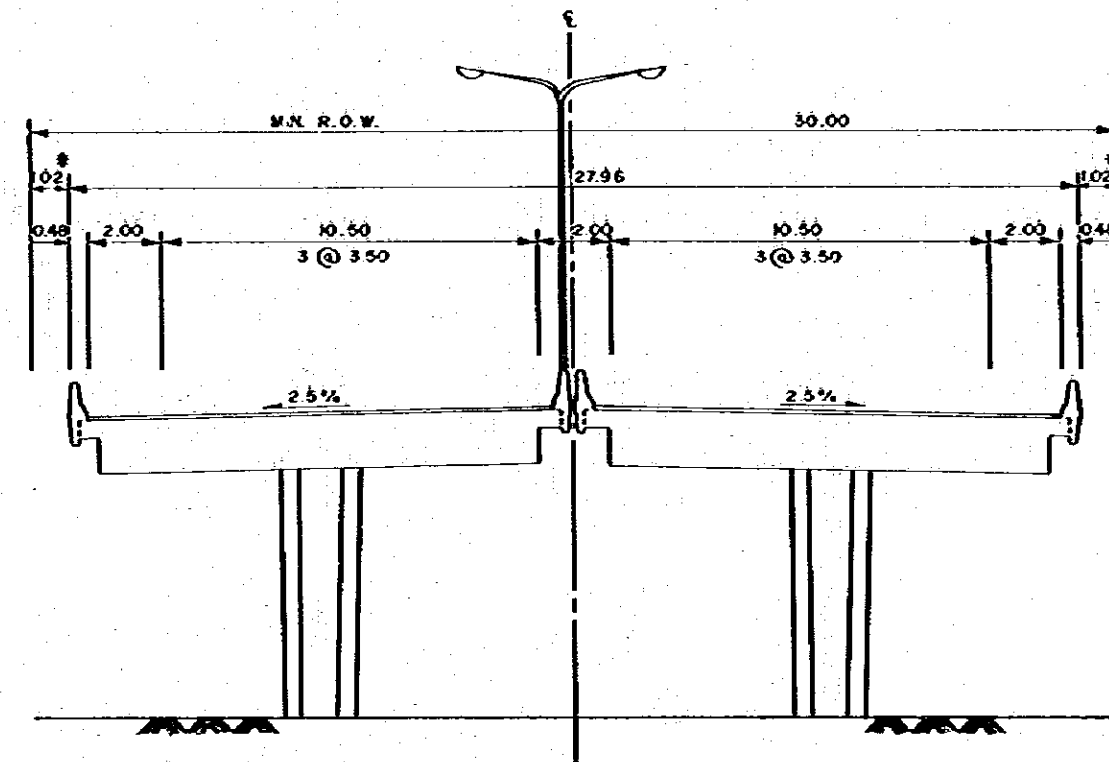


## LOCATION MAP (BANGKOK)

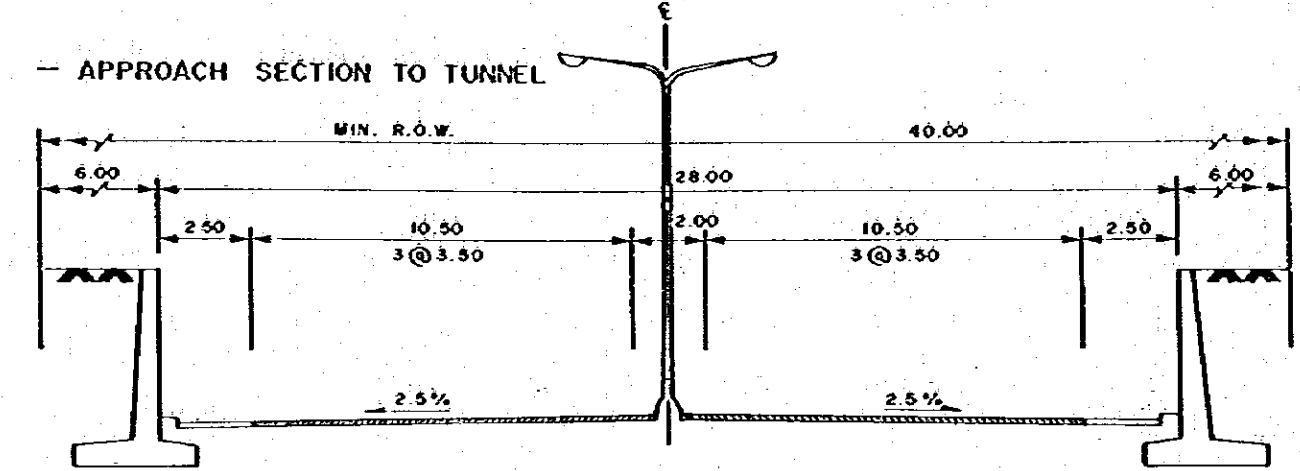


## TYPICAL CROSS SECTIONS OF THE EXPRESSWAY

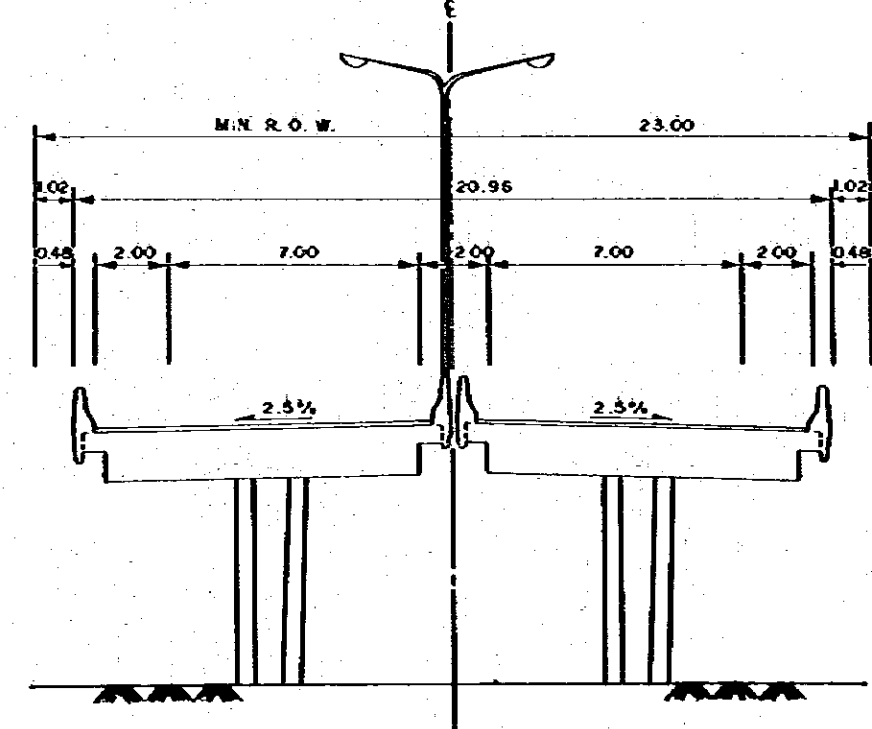
6 - LANE ROAD OF ELEVATED SECTION



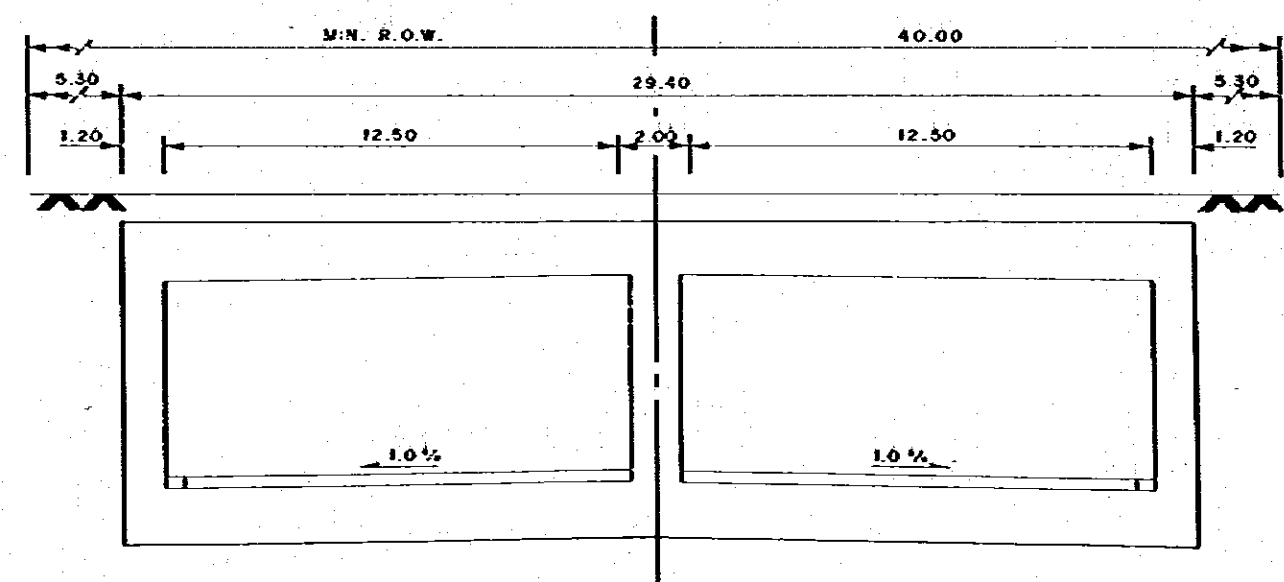
6 - LANE ROAD OF UNDERCROSSING SECTION



4 - LANE ROAD OF ELEVATED SECTION



- TUNNEL SECTION



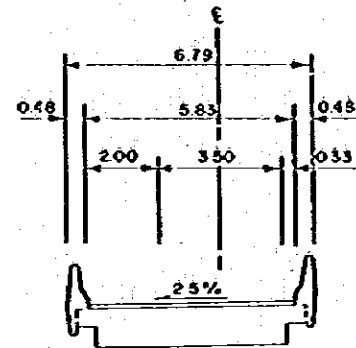
**NOTE :**

THE FIGURES WITH ASTERISK SHOW ABSOLUTE MINIMUM VALUES. THEY SHALL BE SUBSTITUTED BY 5 METERS OF DESIRABLE MINIMUM VALUES TO PROVIDE SET BACK DISTANCE WHERE THE VIADUCTS ARE PLANNED WITHIN THE ROW OF THE EXISTING OR PLANNED STREETS.

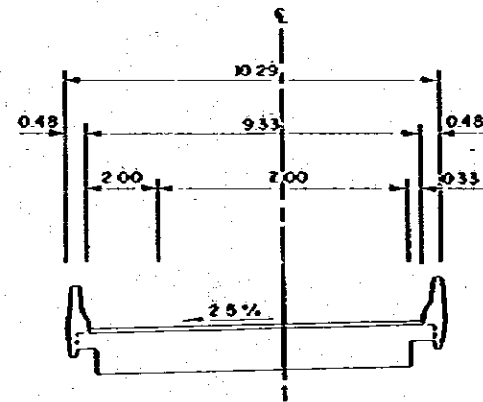
# TYPICAL CROSS SECTIONS OF INTERCHANGES AND ON - OFF RAMPs

THE SECOND STAGE EXPRESSWAY SYSTEM IN THE GREATER BANGKOK		
SCALE 1 : 200	TYPICAL CROSS SECTIONS (2)	Dwg. No. 3

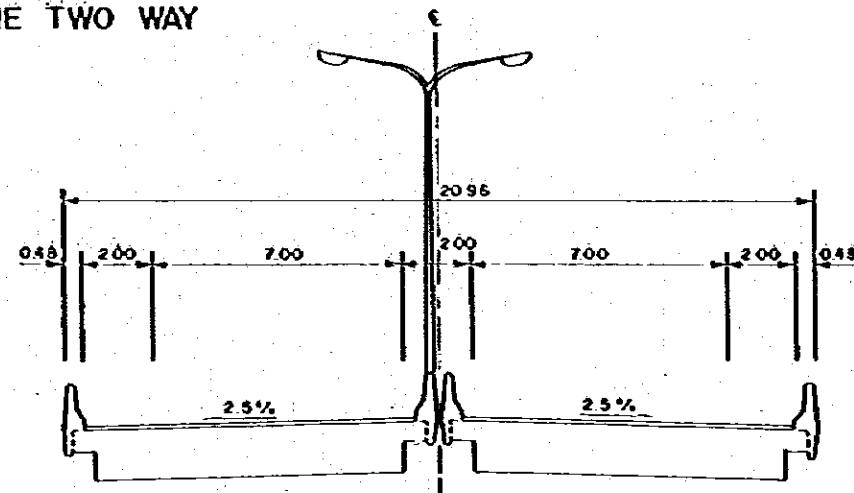
1 - LANE ONE WAY



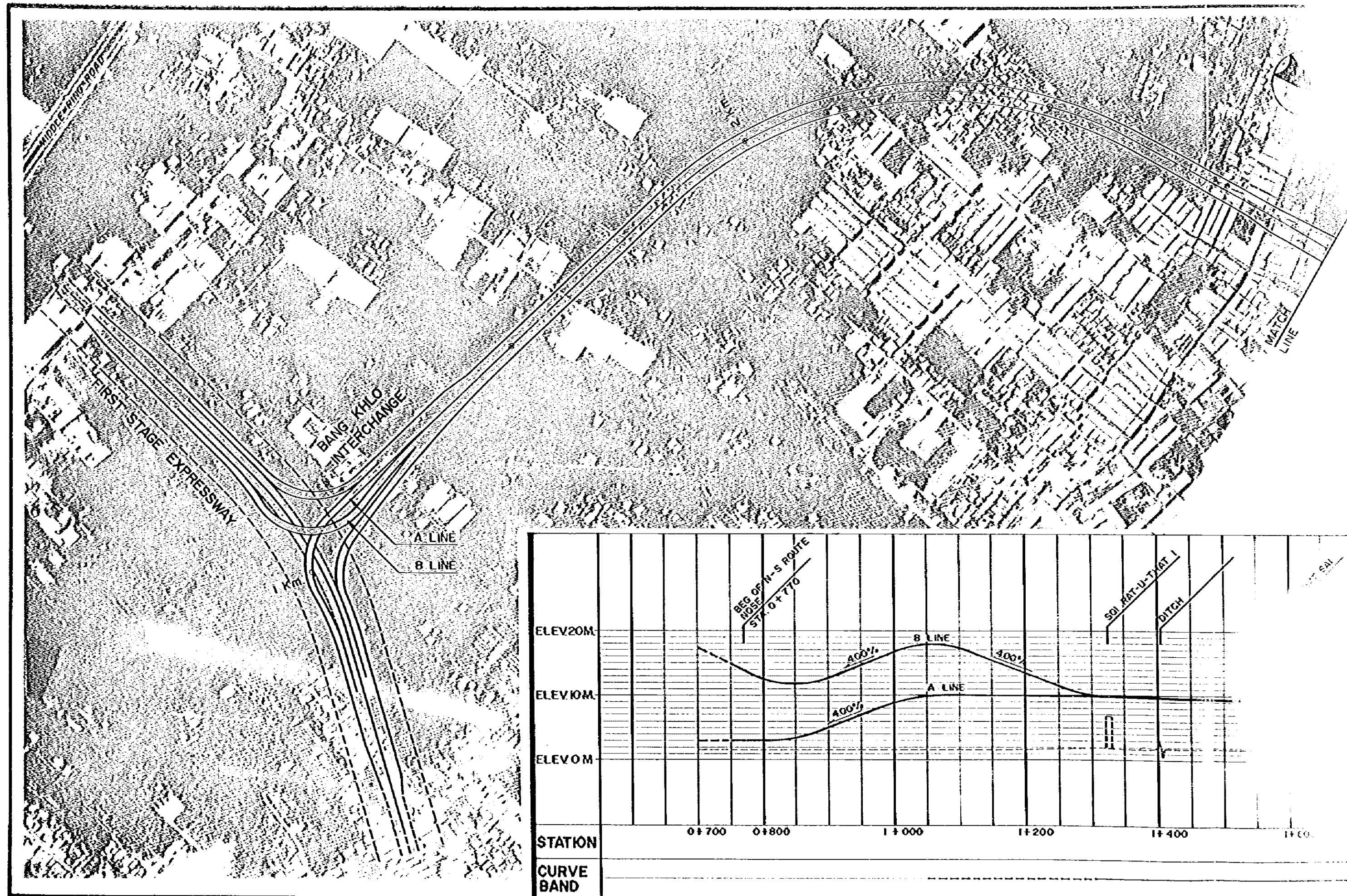
2 - LANE ONE WAY



2 - LANE TWO WAY

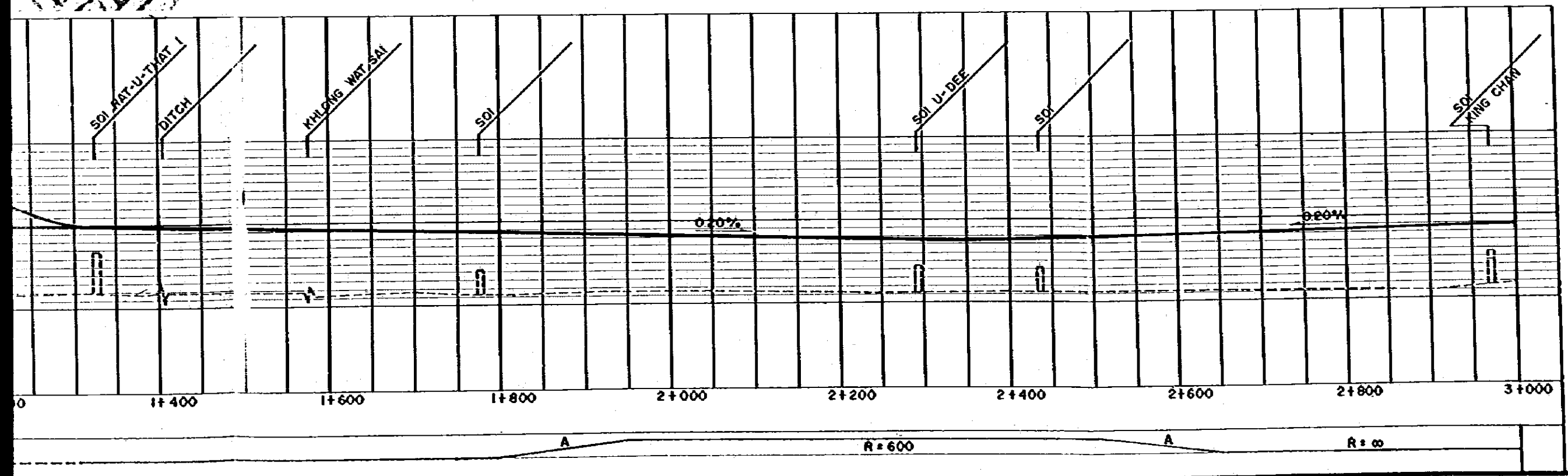
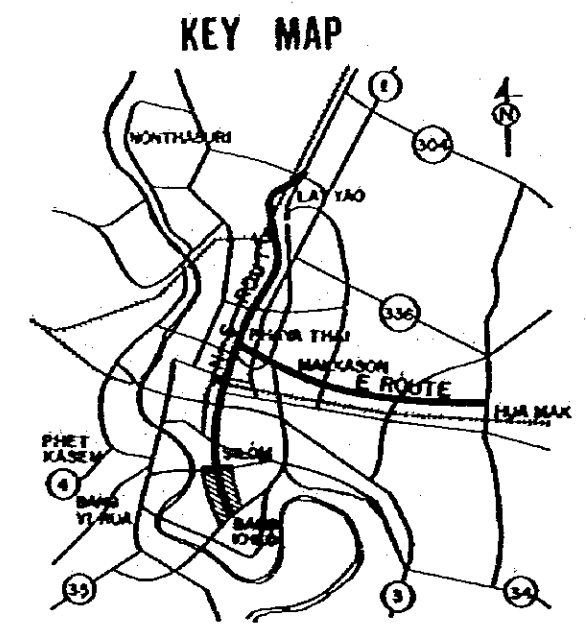


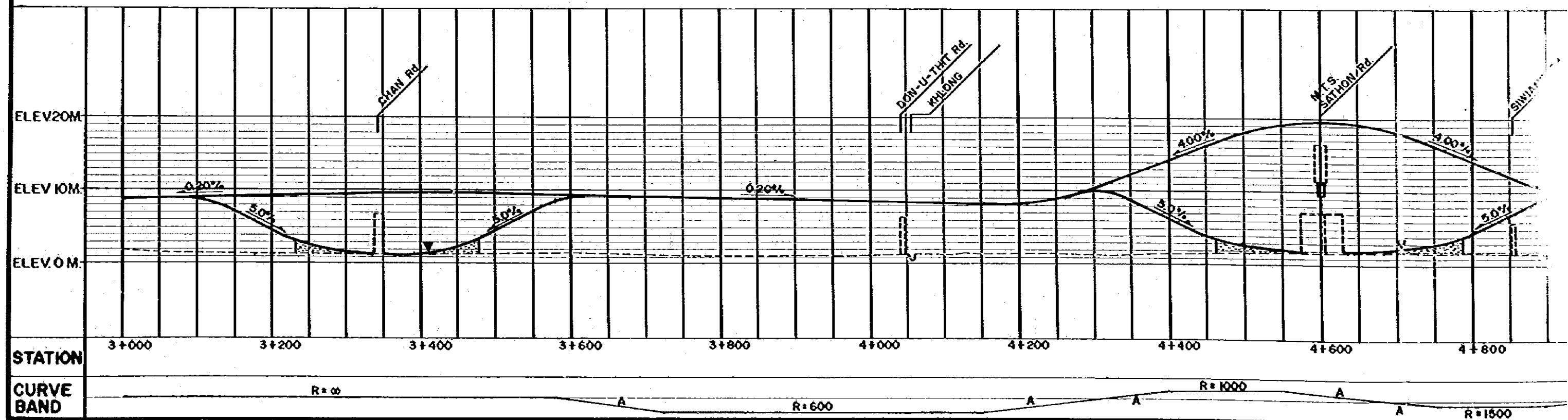




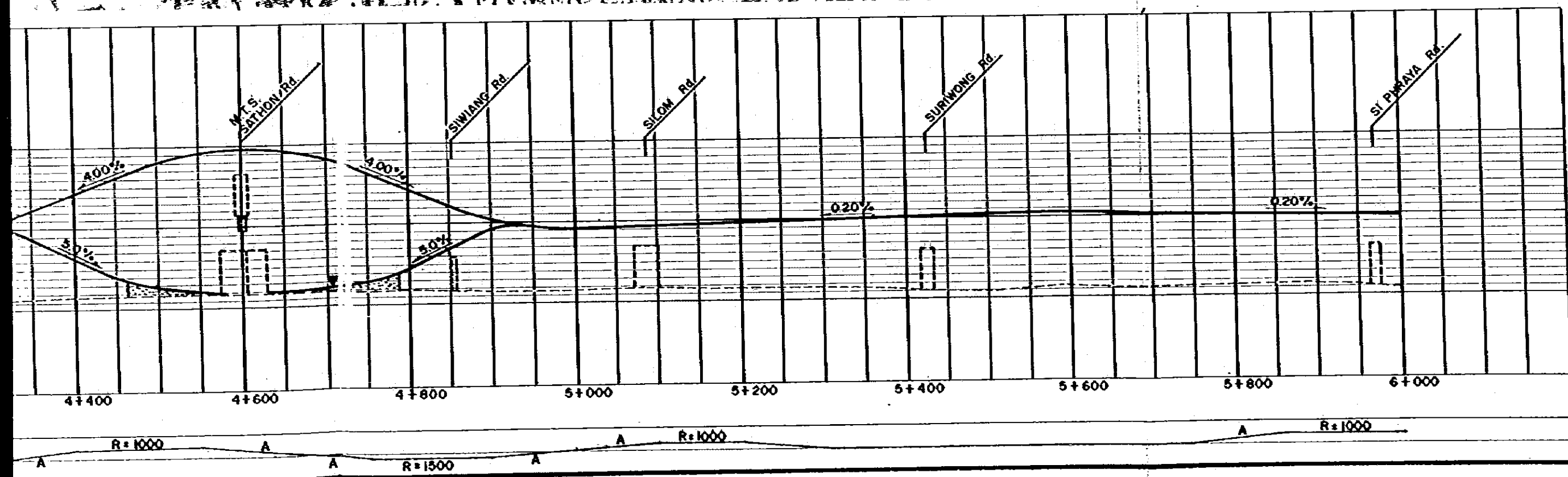
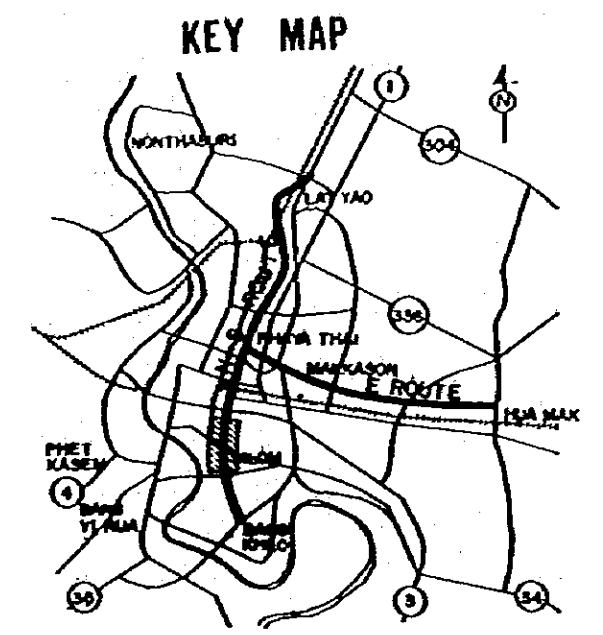


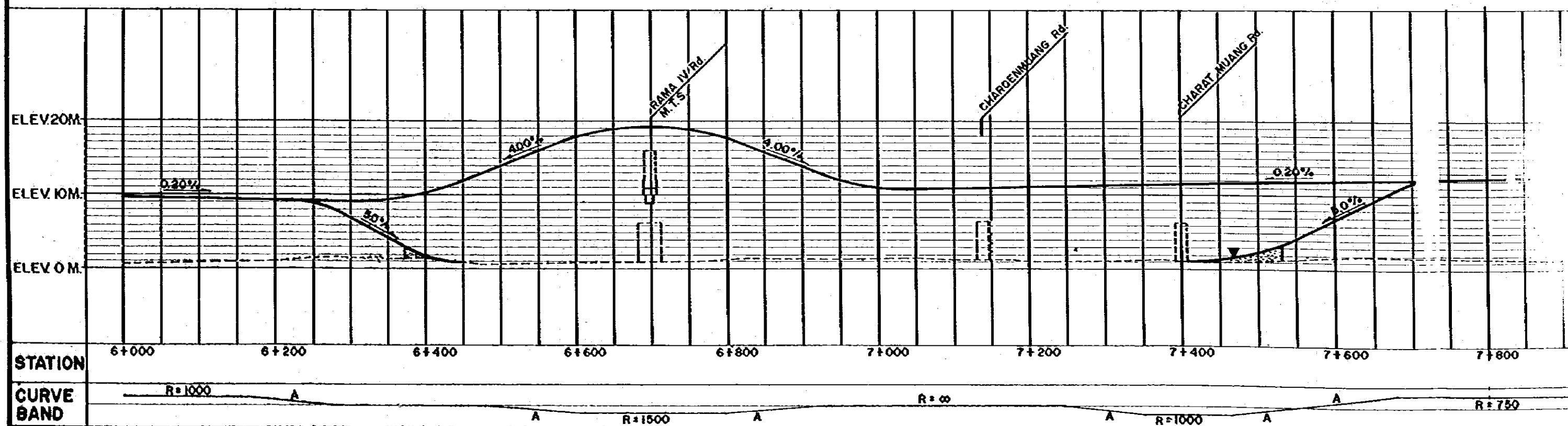
THE SECOND STAGE EXPRESSWAY SYSTEM IN THE GREATER BANGKOK		
SCALE 1: 600 1: 6000	N - S ROUTE, PLAN AND PROFILE (STA. 0 + 770 - STA. 3 + 000)	Dwg. No. 4









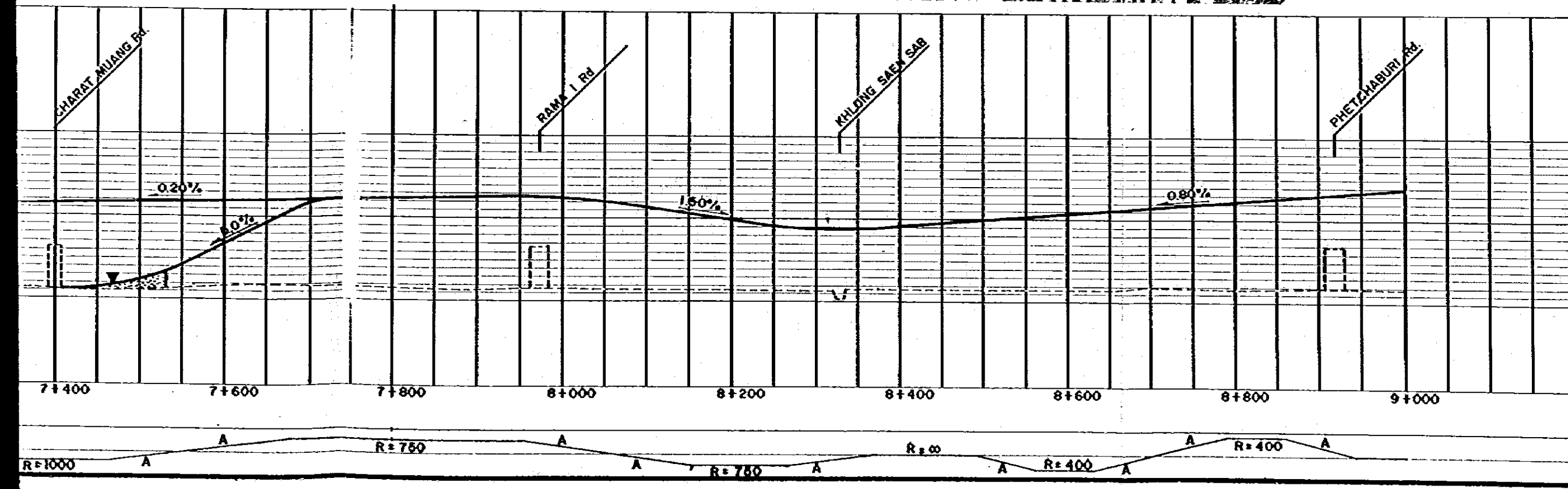
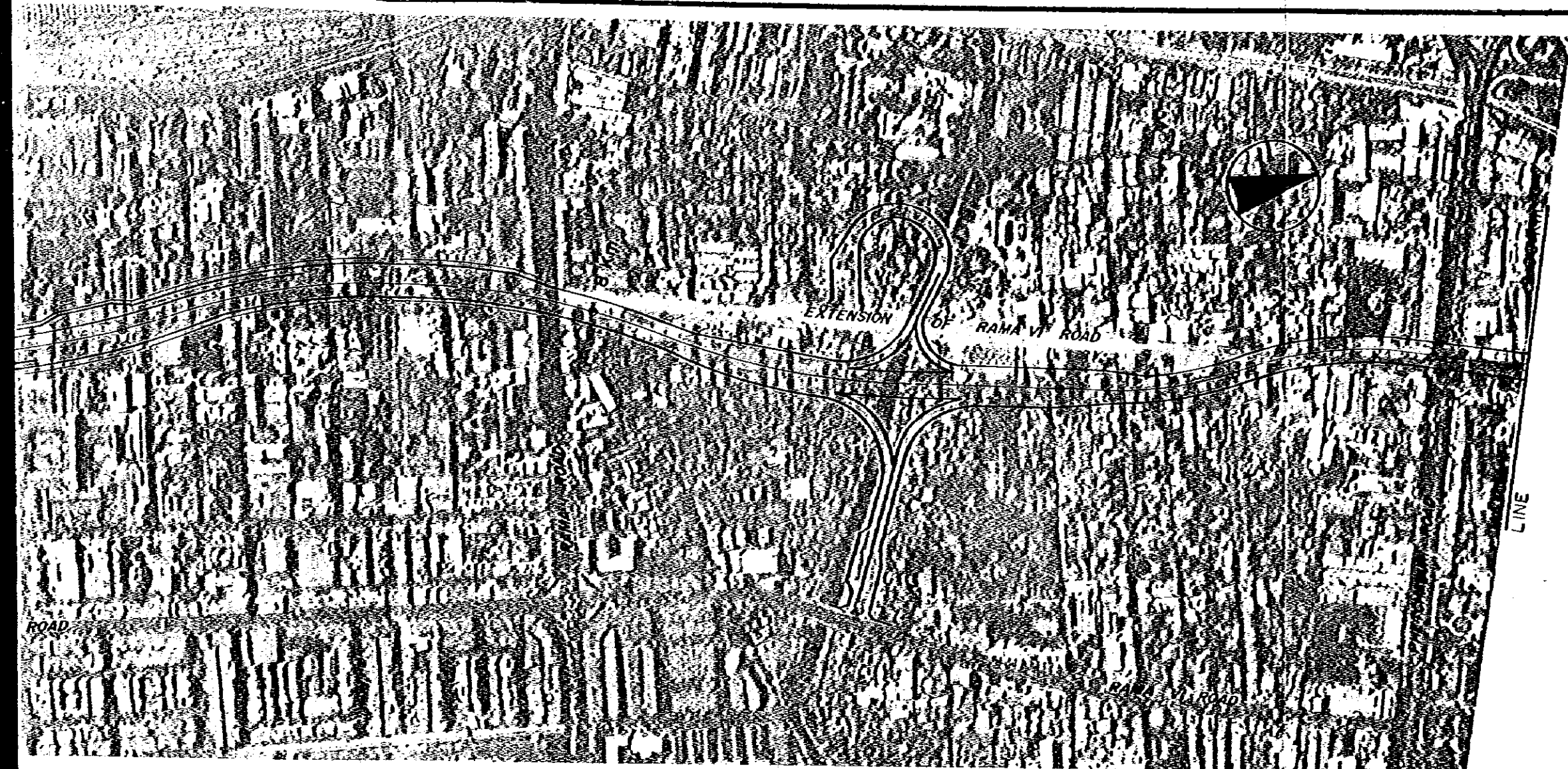
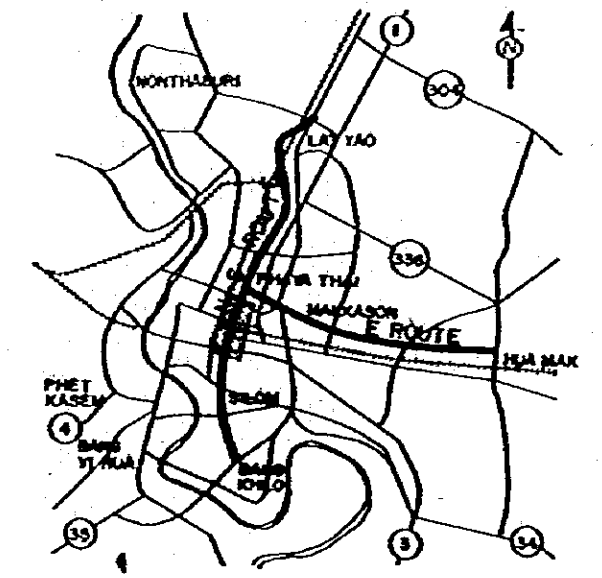


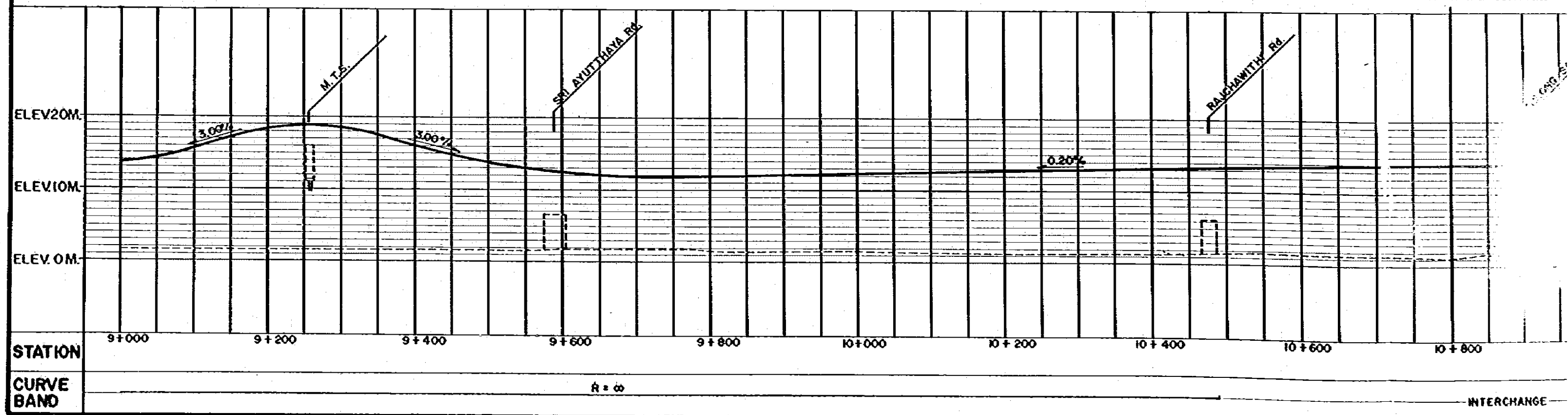
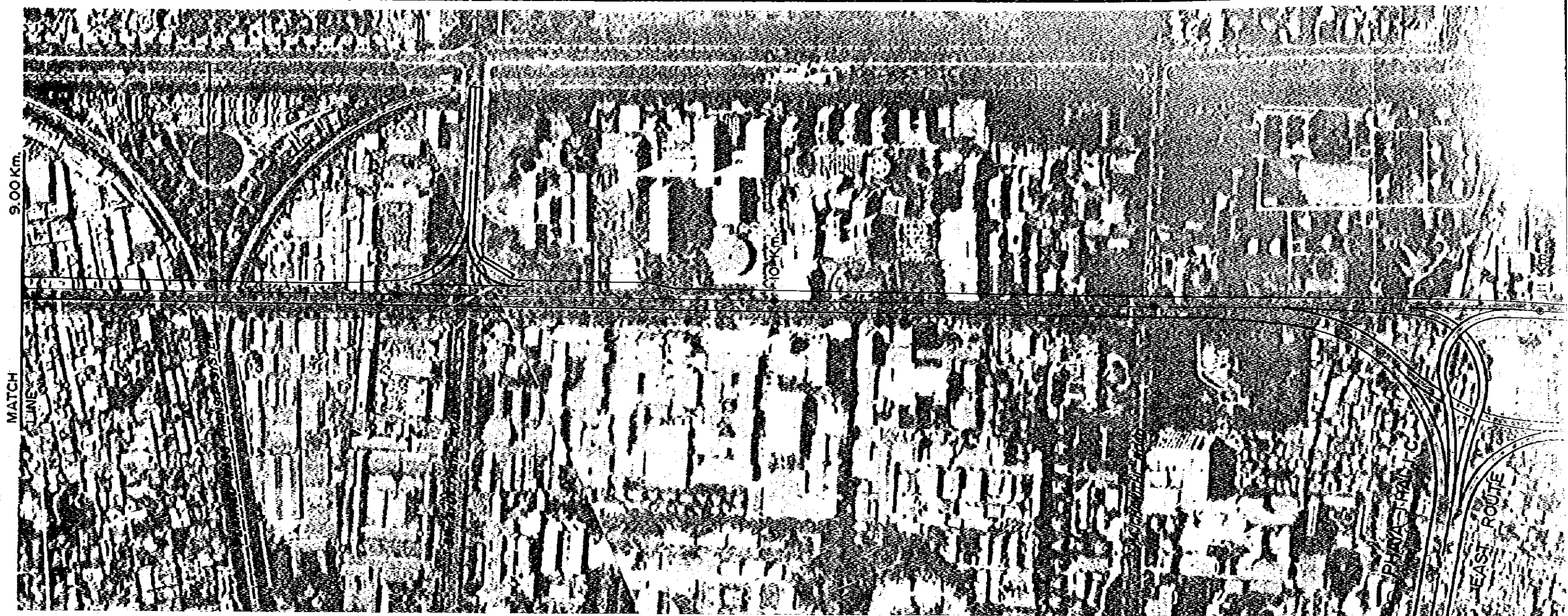


THE SECOND STAGE EXPRESSWAY SYSTEM  
IN THE GREATER BANGKOK

SCALE 1:500 1:6000	N-S ROUTE, PLAN AND PROFILE (STA. 6+000 - STA. 9+000)	Dwg. No. 6
--------------------------	--	---------------

KEY MAP

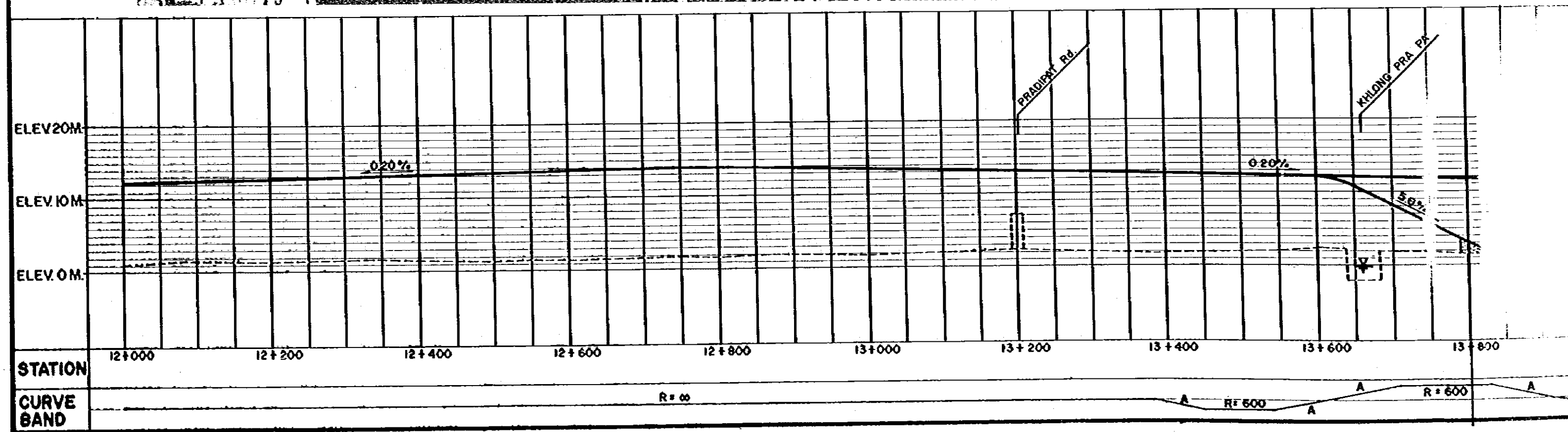
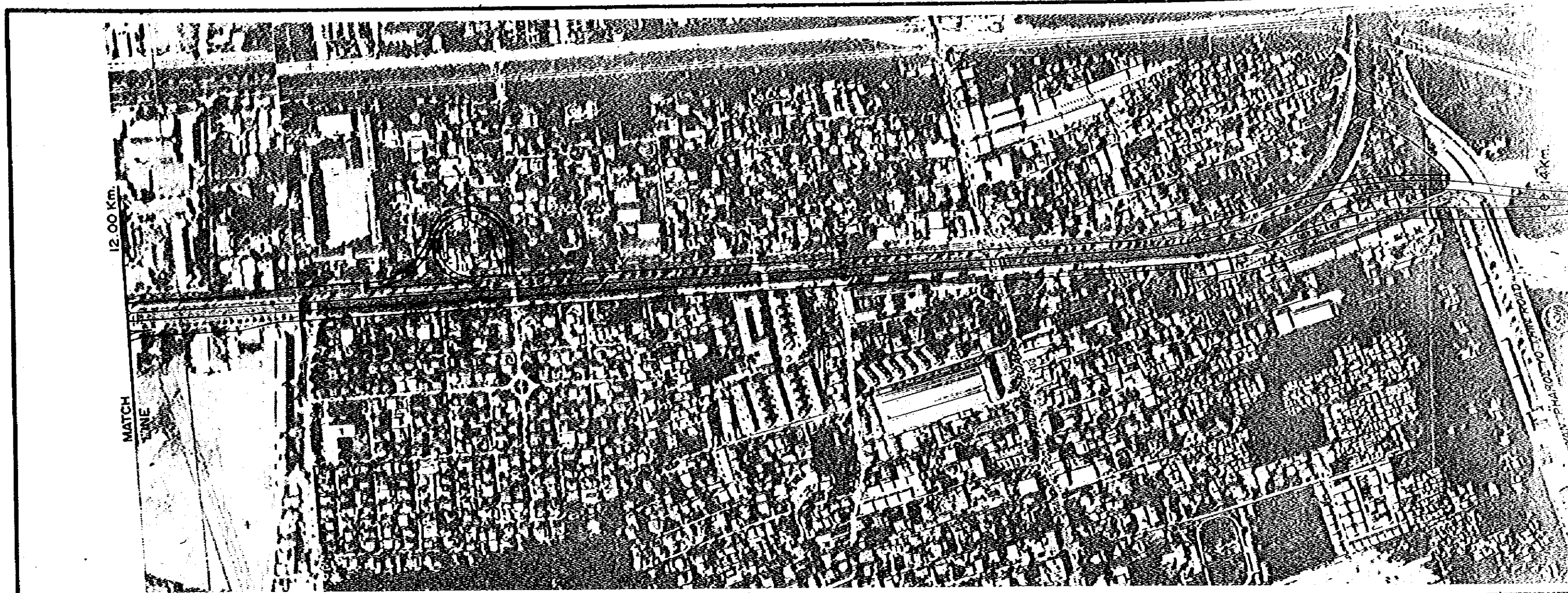


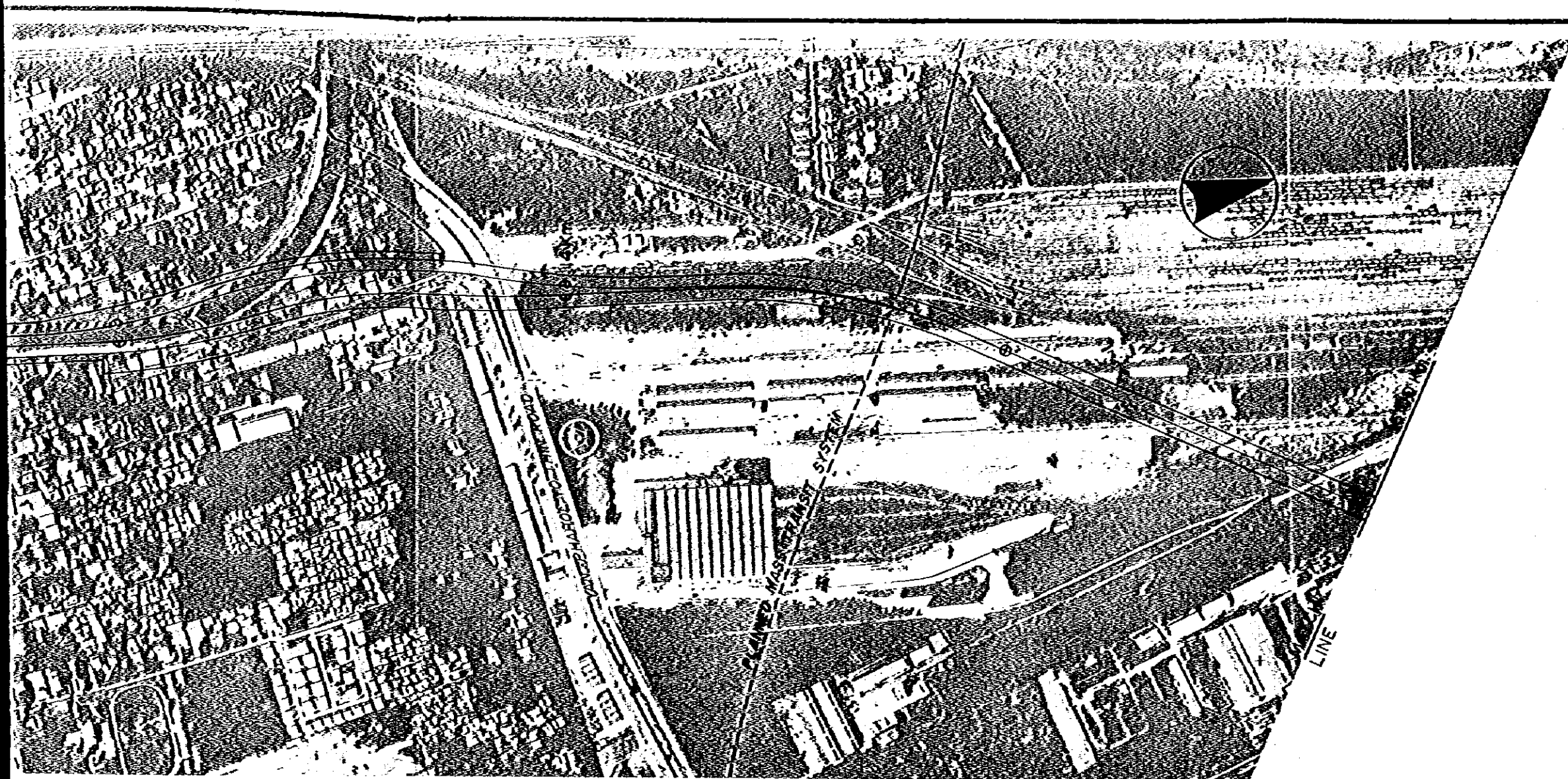












THE SECOND STAGE EXPRESSWAY SYSTEM IN THE GREATER BANGKOK		
SCALE 1:6000 1:8000	N-S ROUTE, PLAN AND PROFILE (STA. 12+000 - STA. 16+000)	OWG. No. 8

