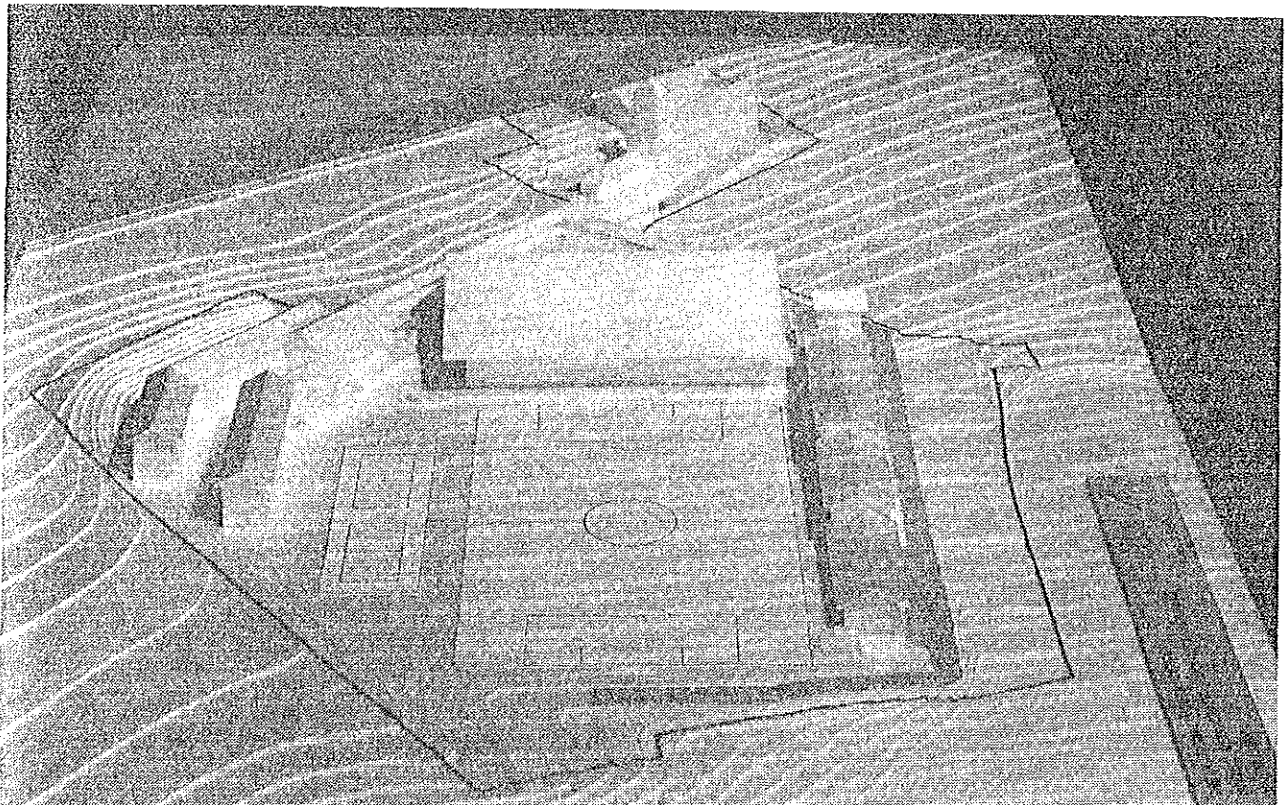
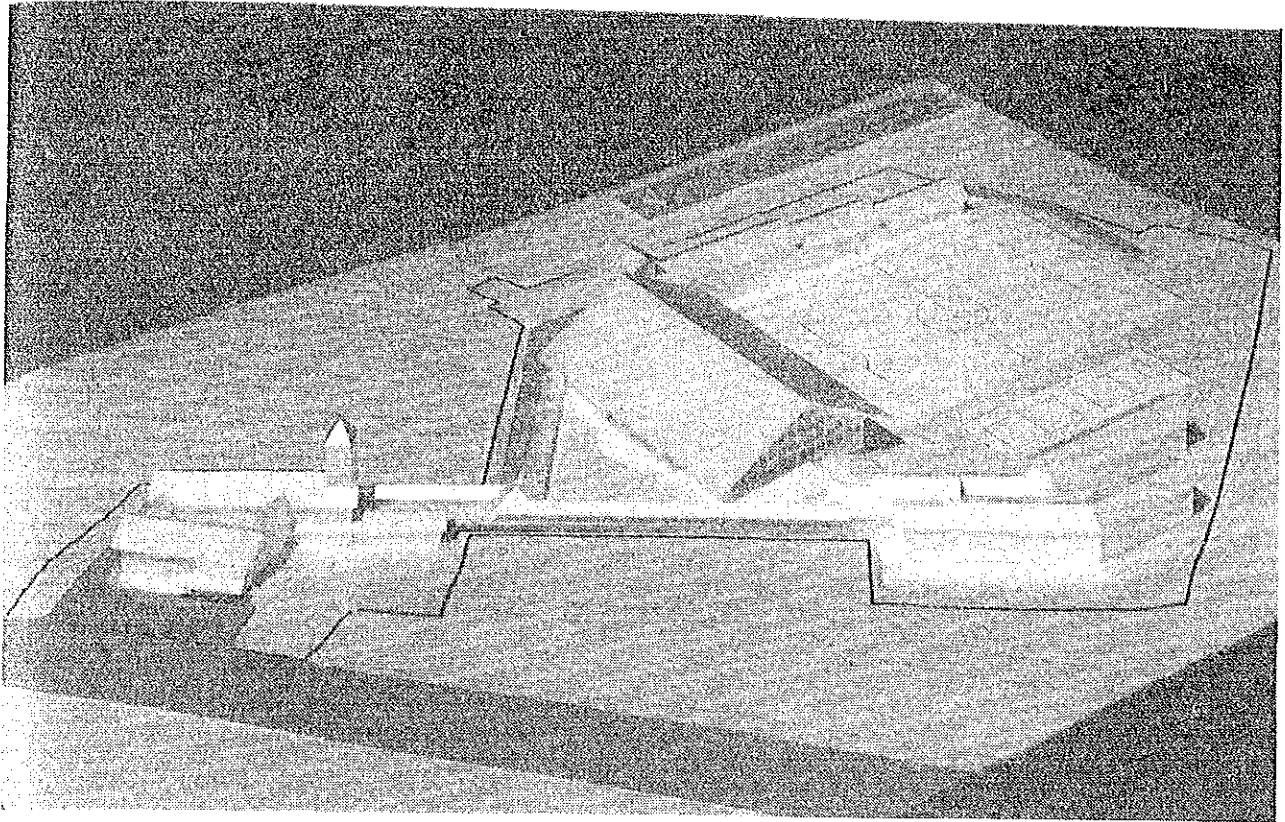
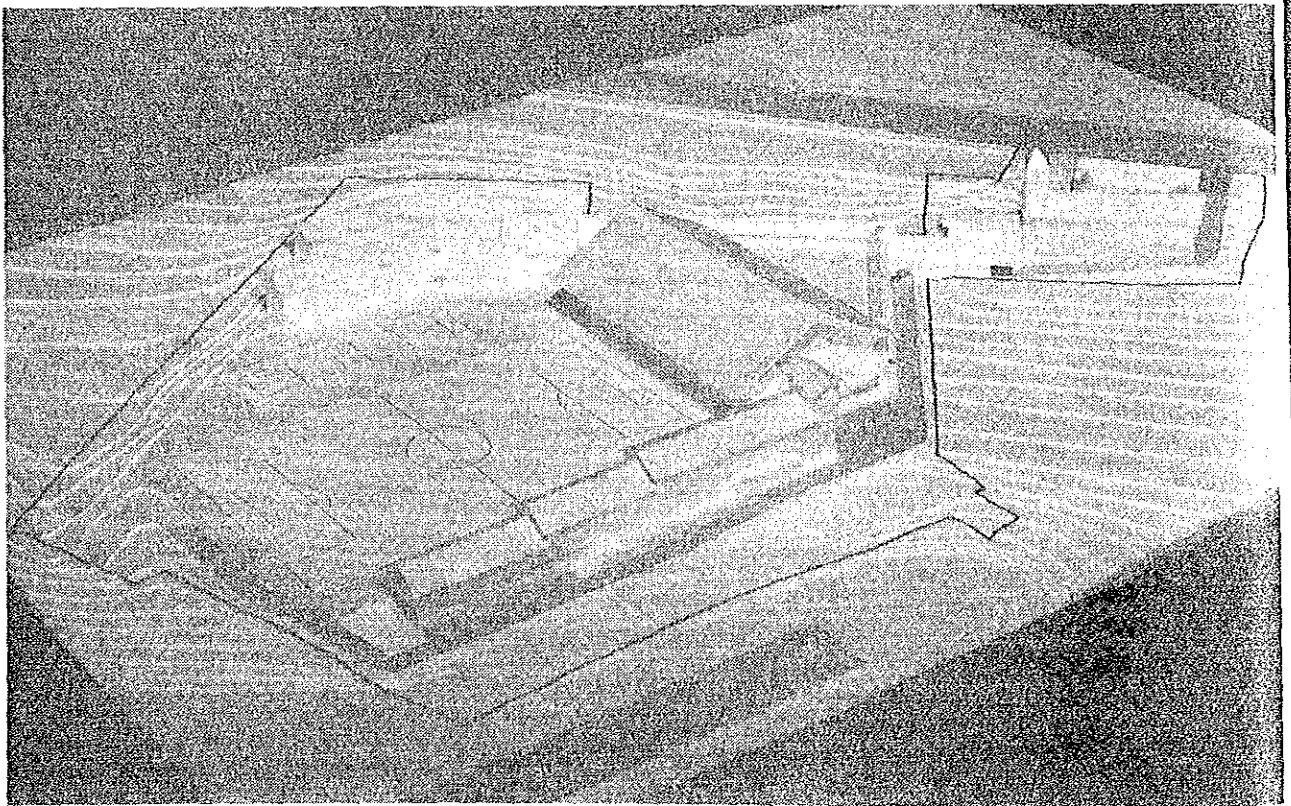
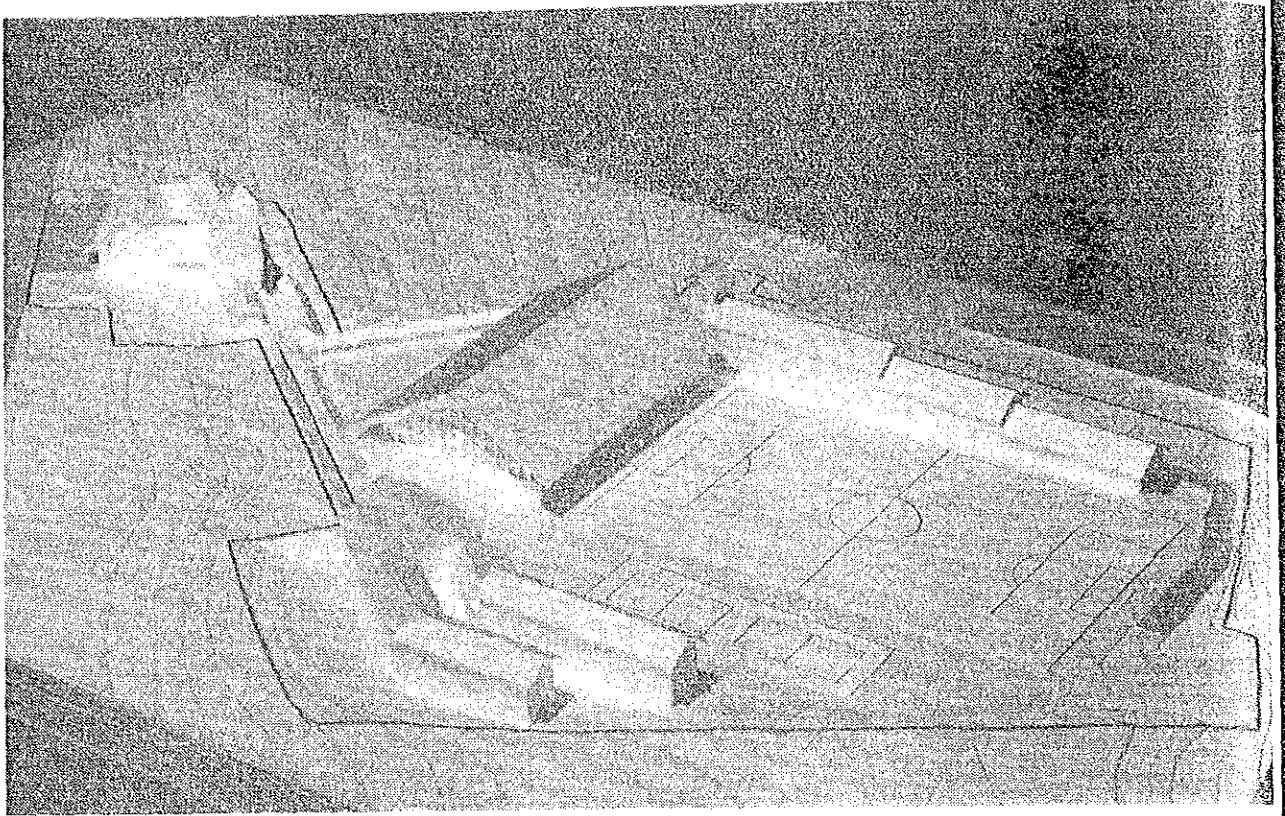
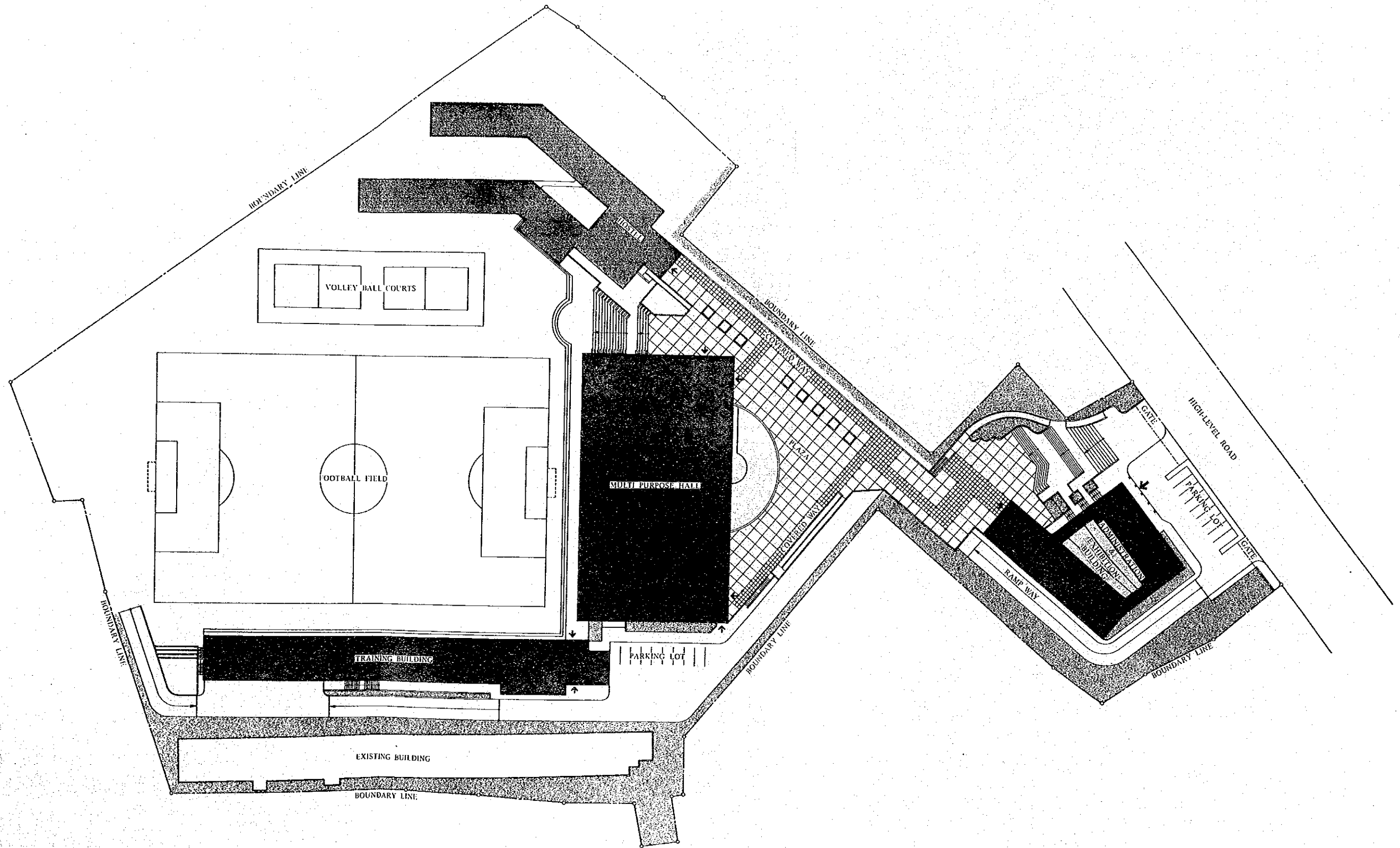


5-9. Basic design

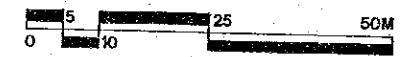
1. SITE PLAN
2. GROUND FLOOR PLAN
3. FIRST FLOOR PLAN
4. SECOND FLOOR PLAN
5. ROOF PLAN
6. FLOOR PLAN (ADMIN. & EXHIBITION BLDG.)
7. ELEVATION, SECTION
8. ELEVATION, SECTION
9. ELEVATION, SECTION (ADMIN. & EXHIBITION BLDG.)
10. WATER SUPPLY SYSTEM
11. DRAINAGE SYSTEM
12. ELECTRICITY & TELEPHONE SYSTEM



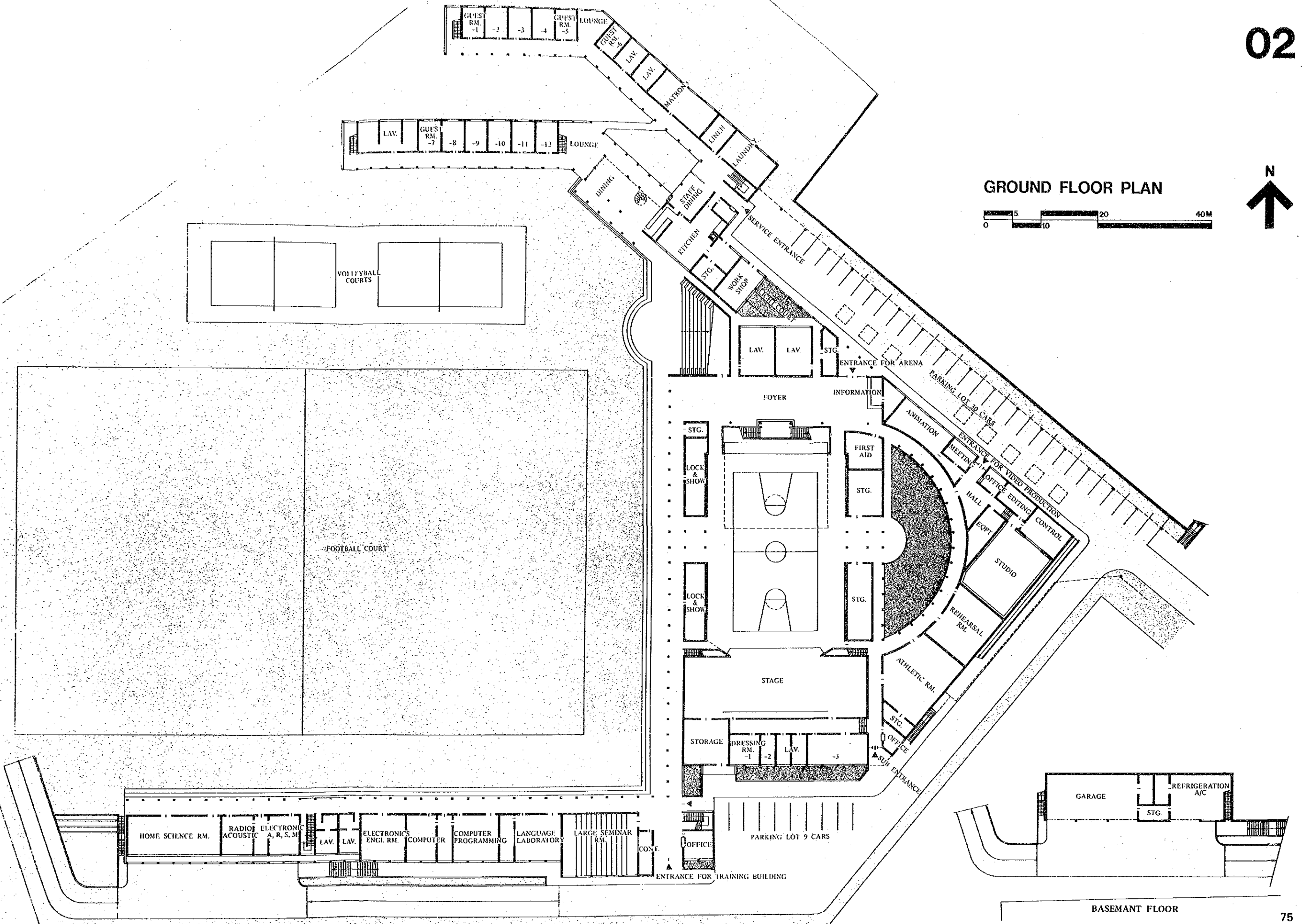
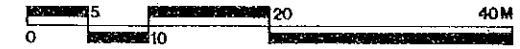




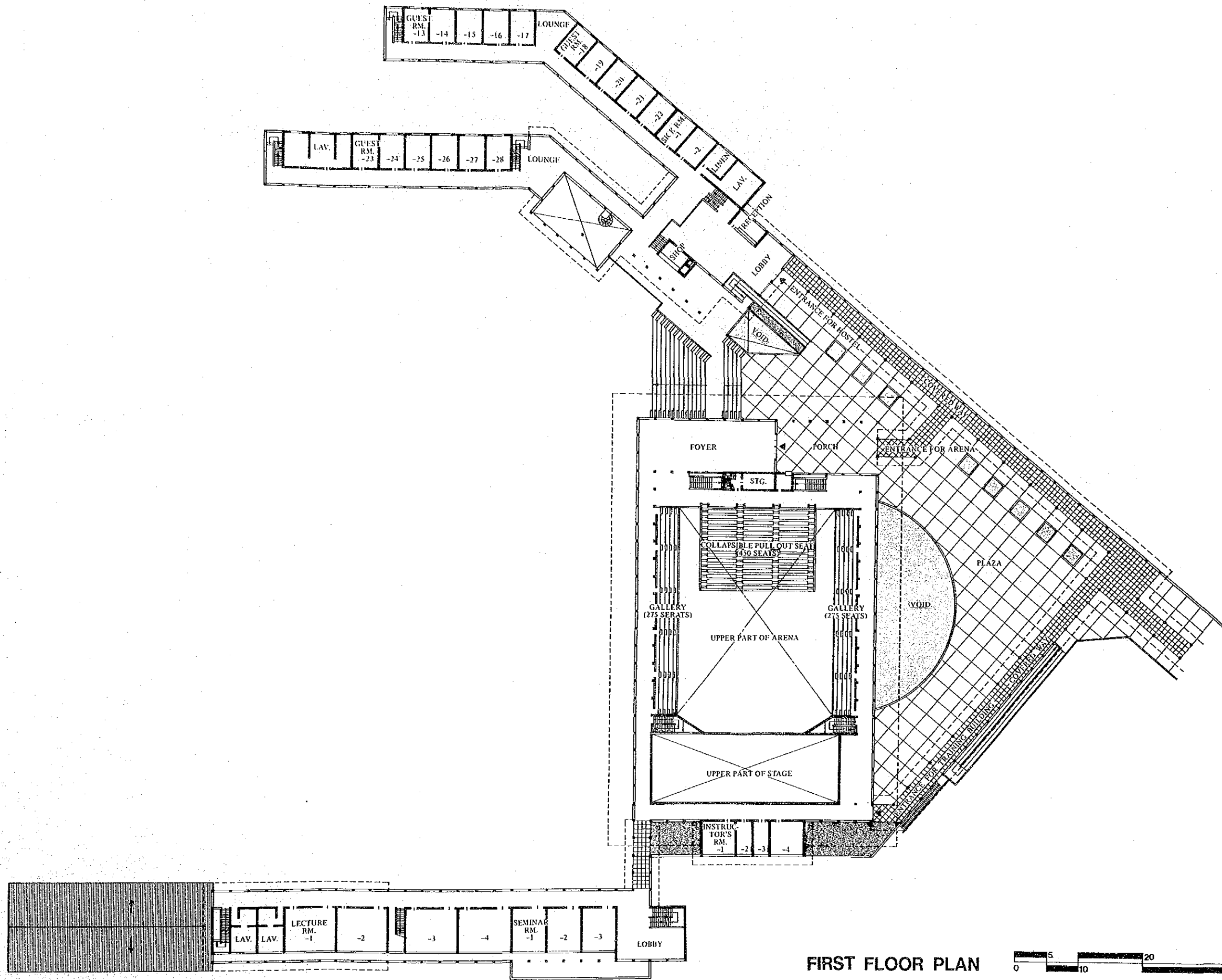
SITE PLAN



GROUND FLOOR PLAN

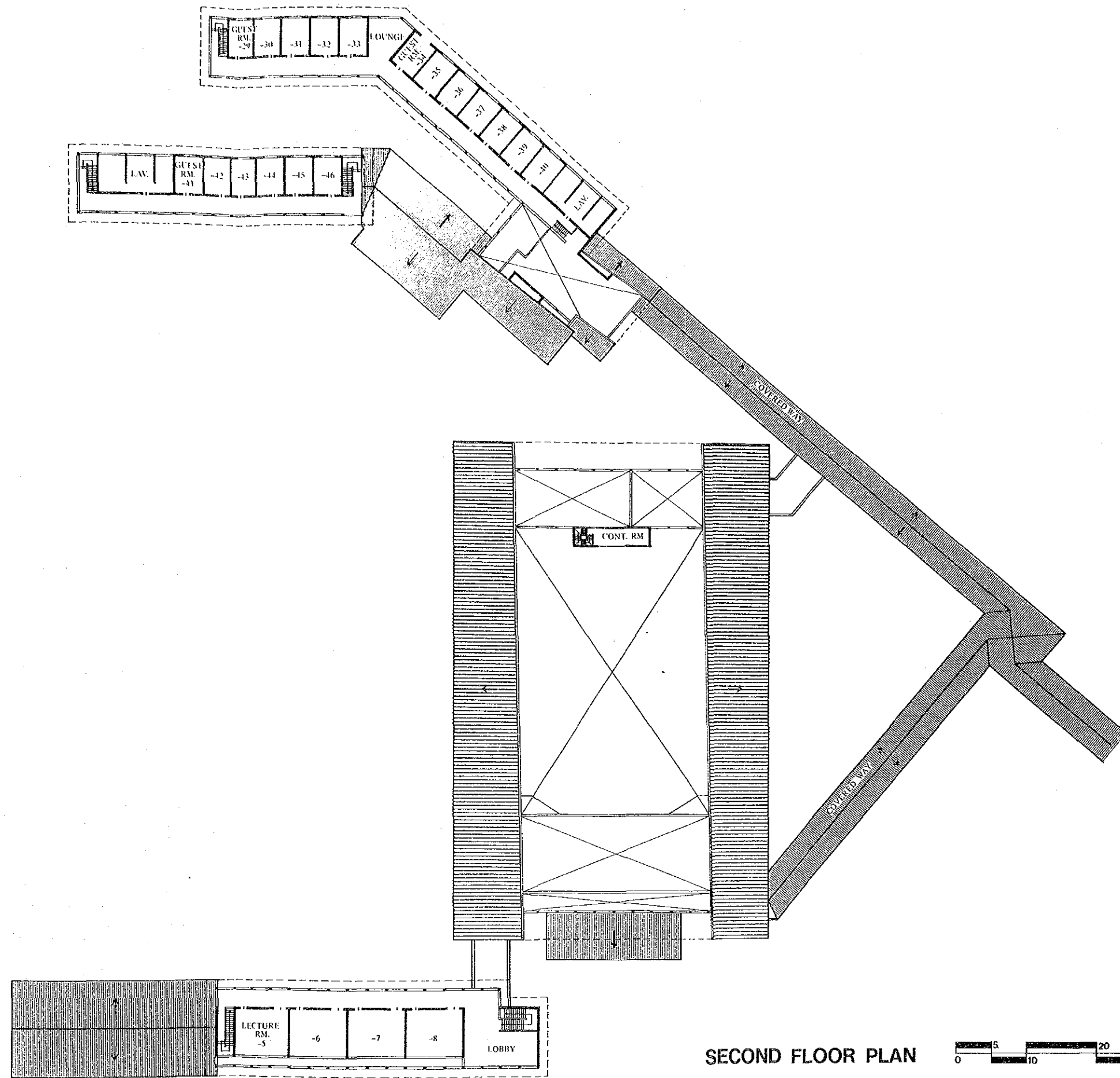


BASEMANT FLOOR

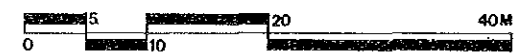


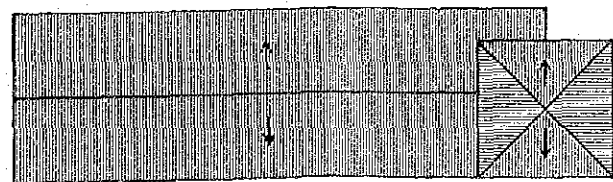
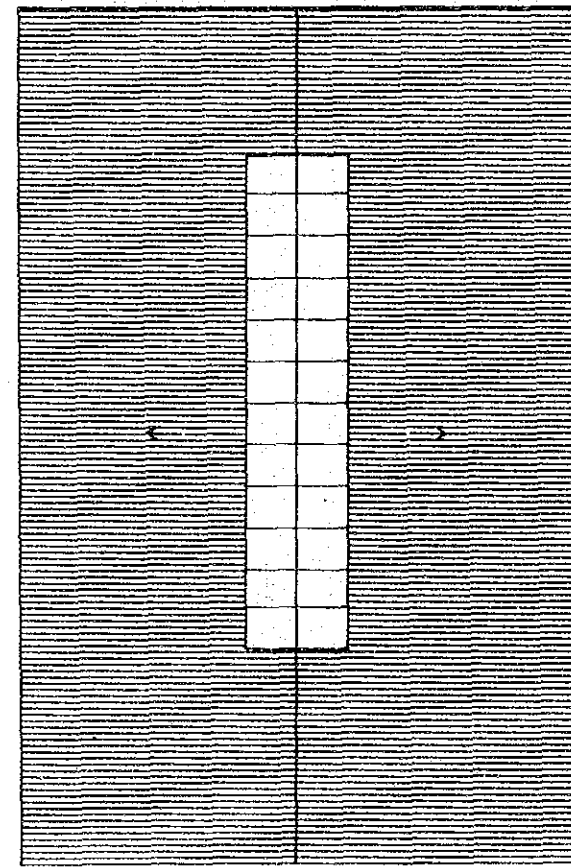
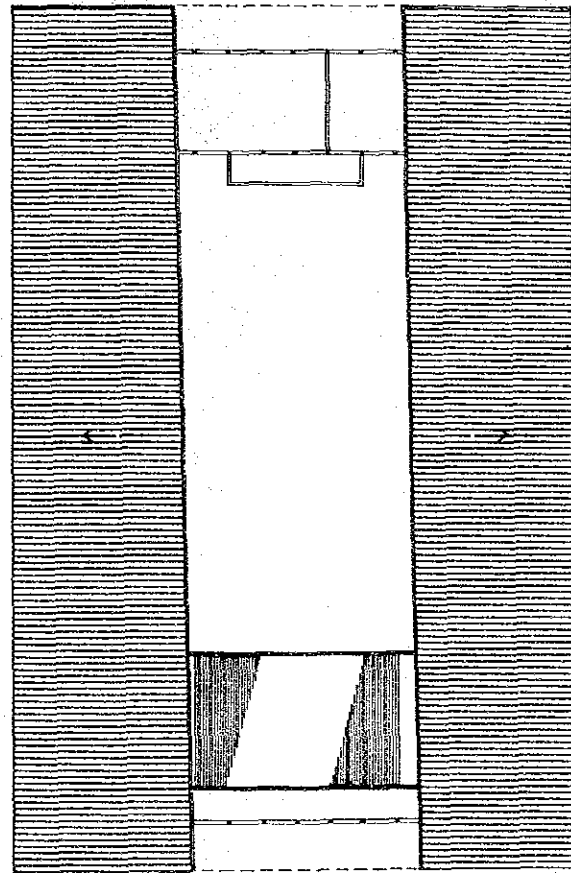
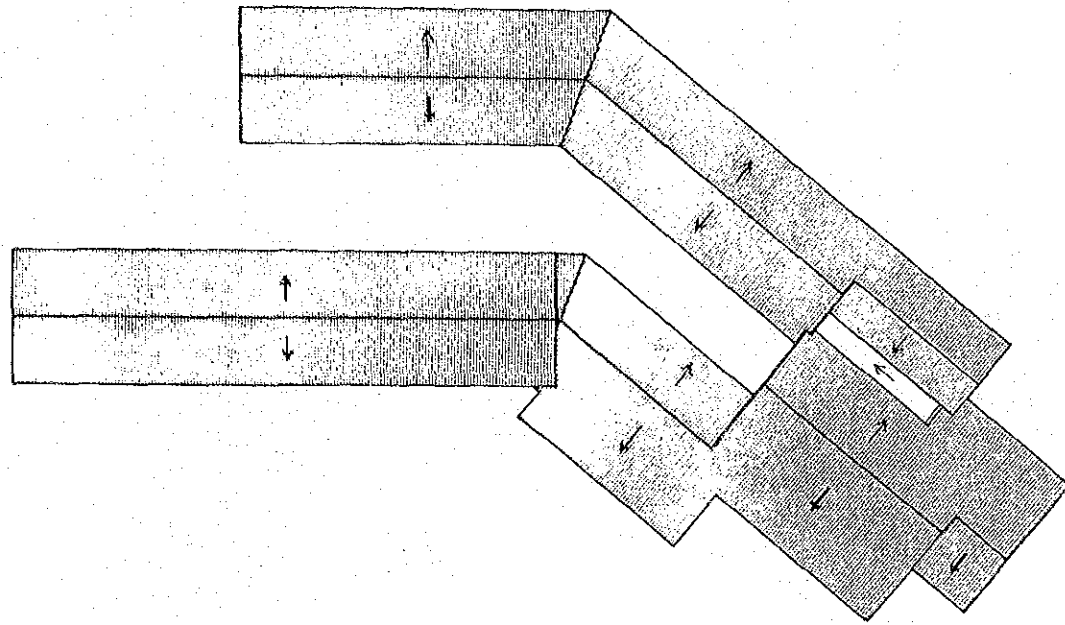
FIRST FLOOR PLAN





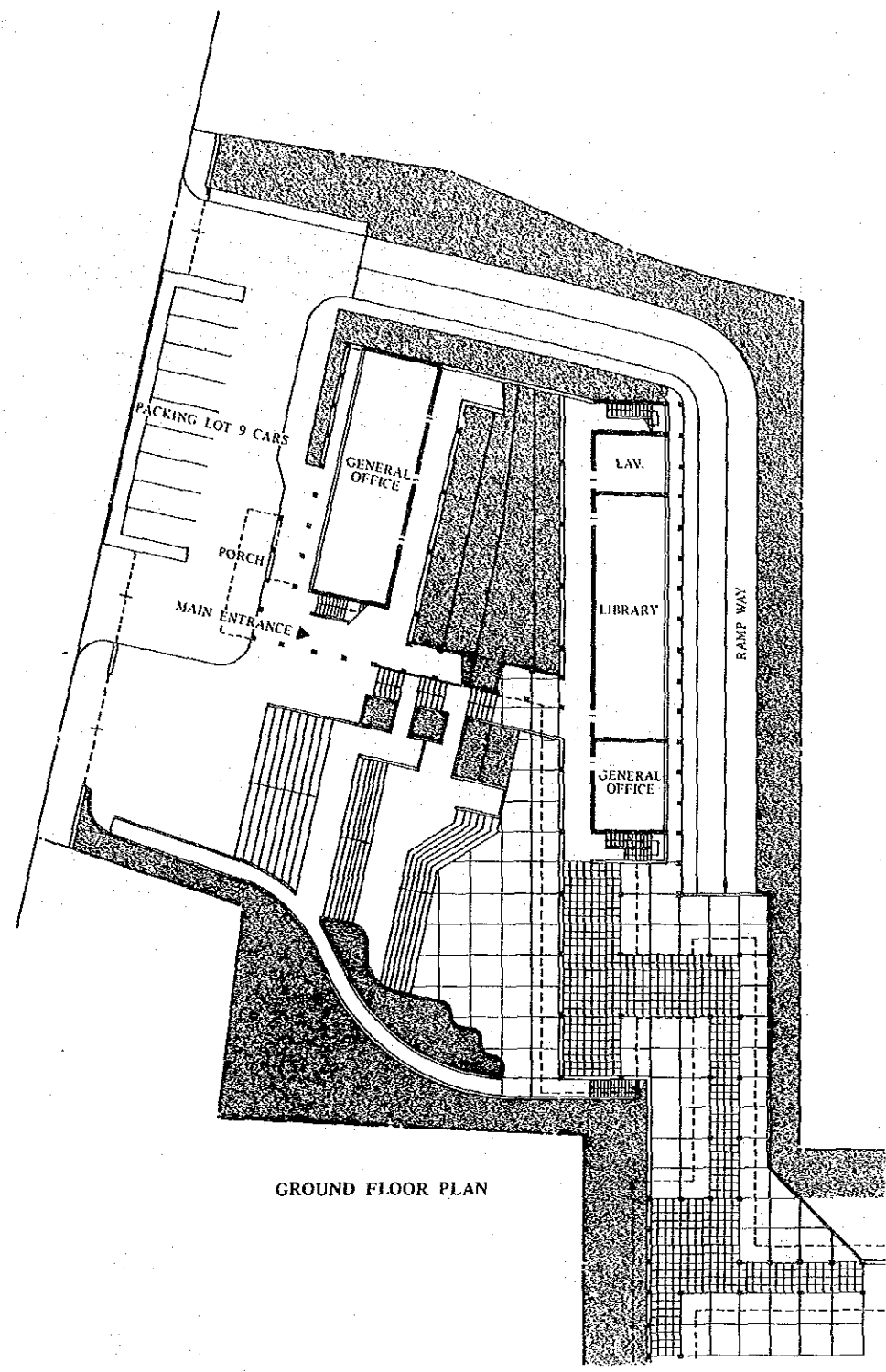
SECOND FLOOR PLAN



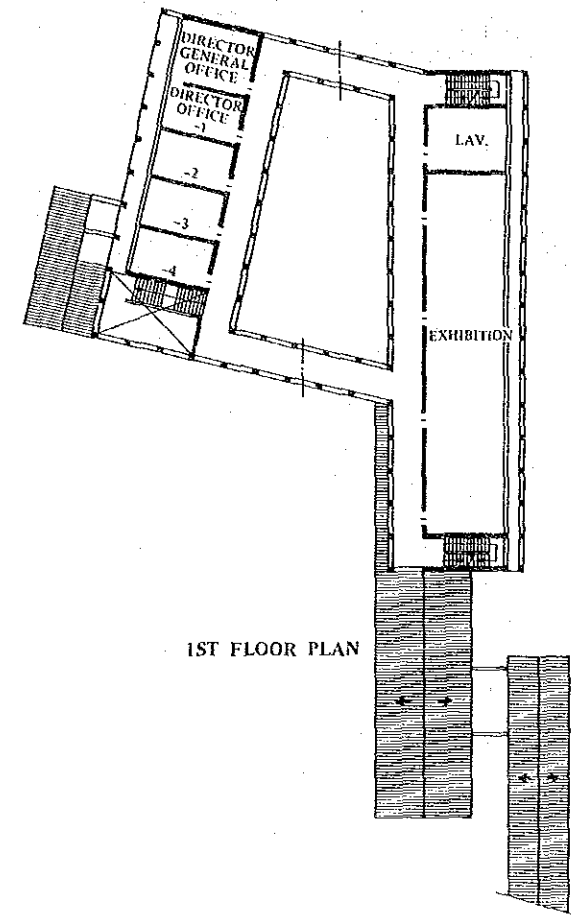


ROOF PLAN

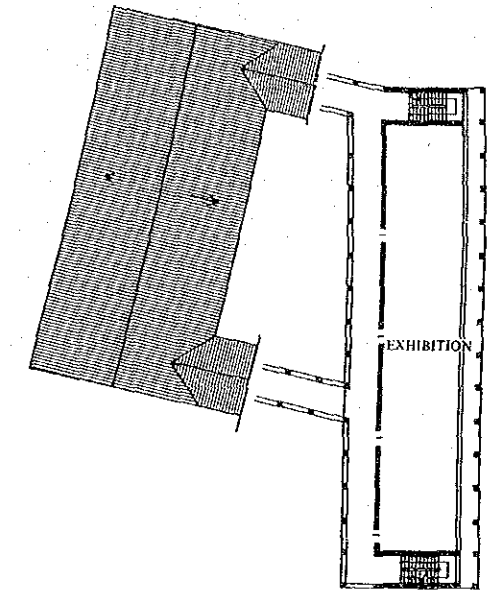




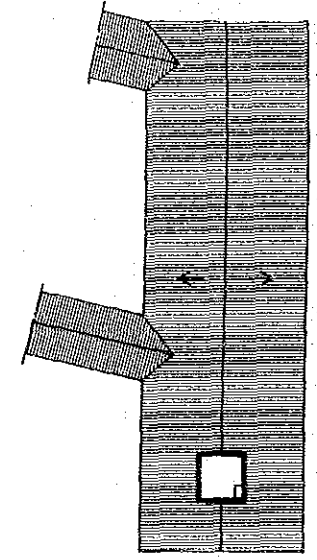
GROUND FLOOR PLAN



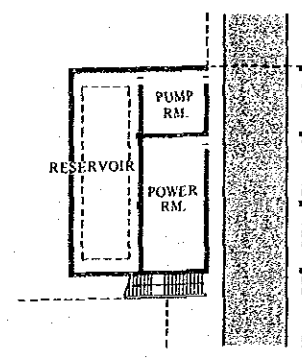
1ST FLOOR PLAN



2ND FLOOR PLAN

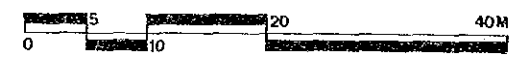


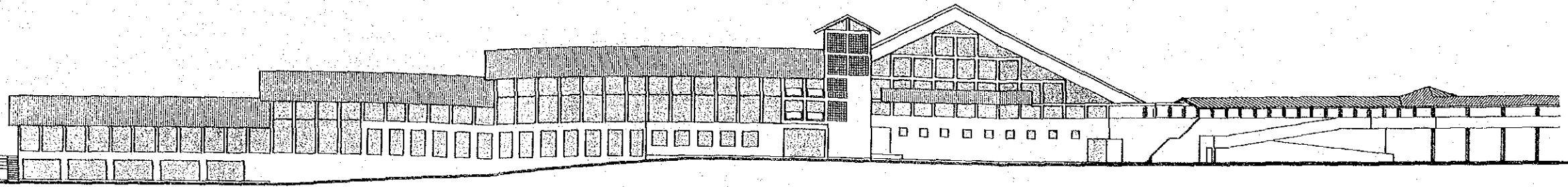
ROOF PLAN



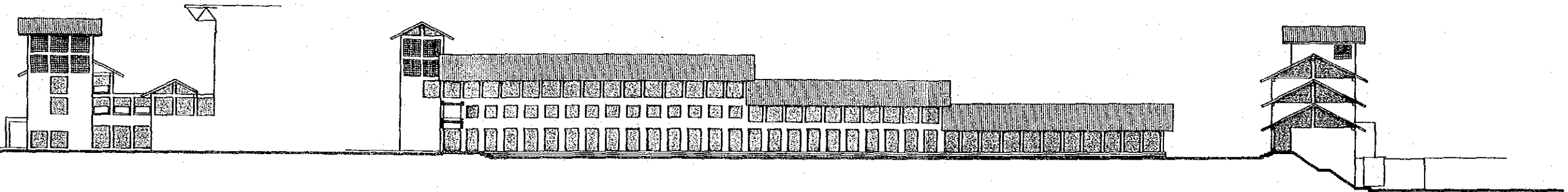
BASEMENT FLOOR PLAN

FLOOR PLAN (ADMINISTRATION AND EXHIBITION BLDG.)





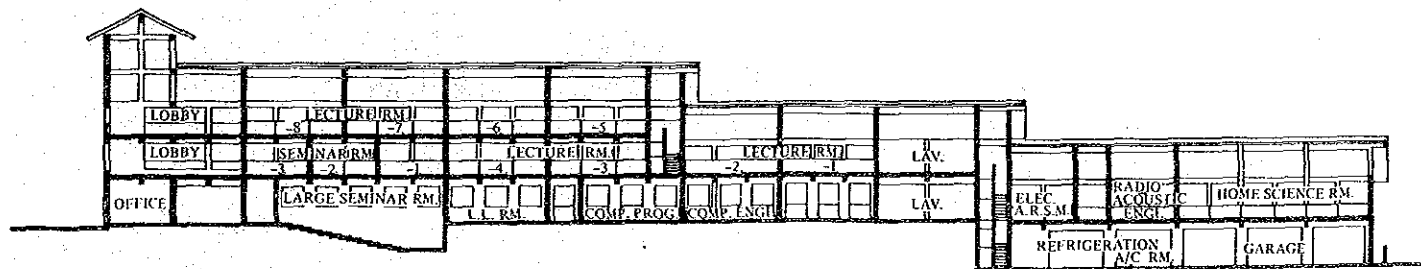
TRAINING BUILDING SOUTH ELEVATION



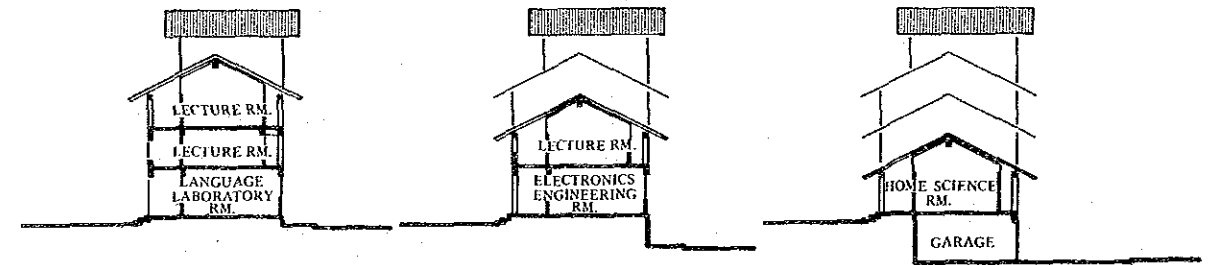
TRAINING BUILDING EAST ELEVATION

TRAINING BUILDING NORTH ELEVATION

TRAINING BUILDING WEST ELEVATION



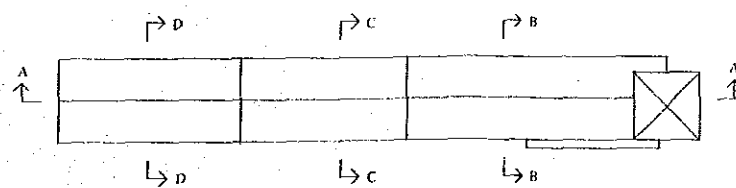
A ~ A SECTION
TRAINING BUILDING



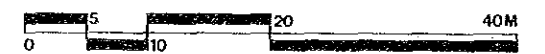
B ~ B SECTION

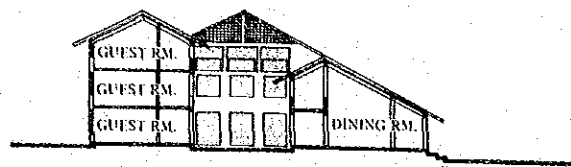
C ~ C SECTION
TRAINING BUILDING

D ~ D SECTION

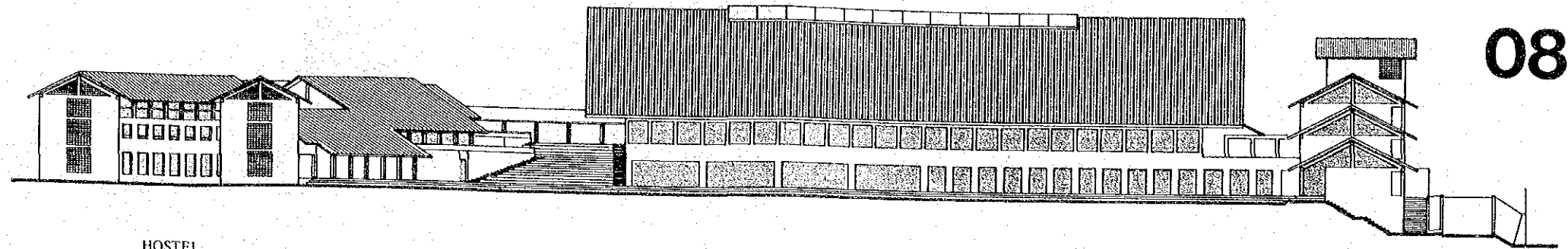


ELEVATION, SECTION





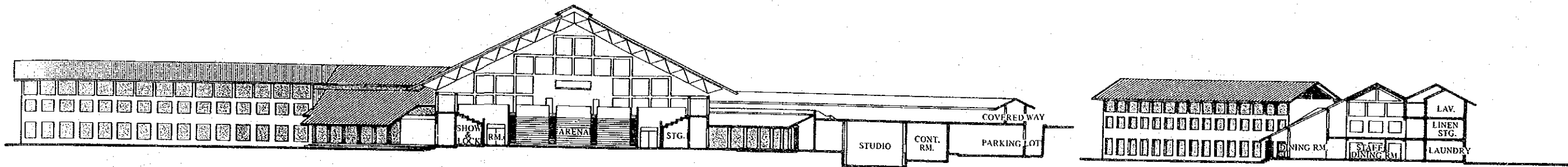
HOSTEL D~D SECTION



HOSTEL

MULTI PURPOSE HALL WEST ELEVATION

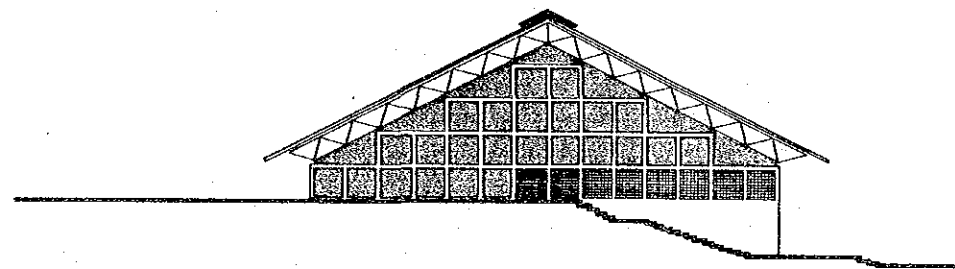
TRAINING BUILDING



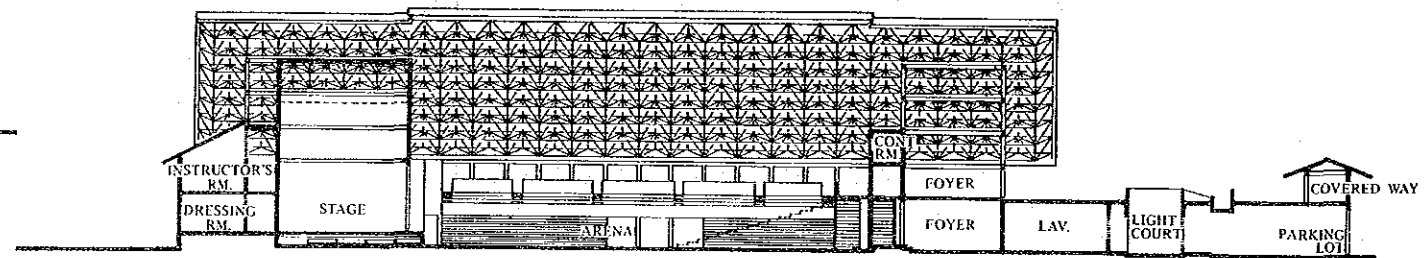
HOSTEL SOUTH ELEVATION

MULTI PURPOSE HALL A~A SECTION

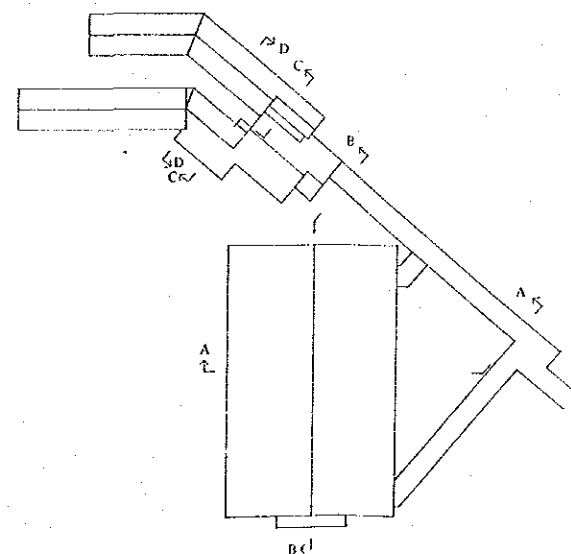
HOSTEL C~C SECTION



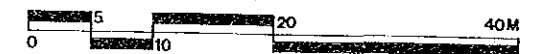
MULTI PURPOSE HALL NORTH ELEVATION 1:300

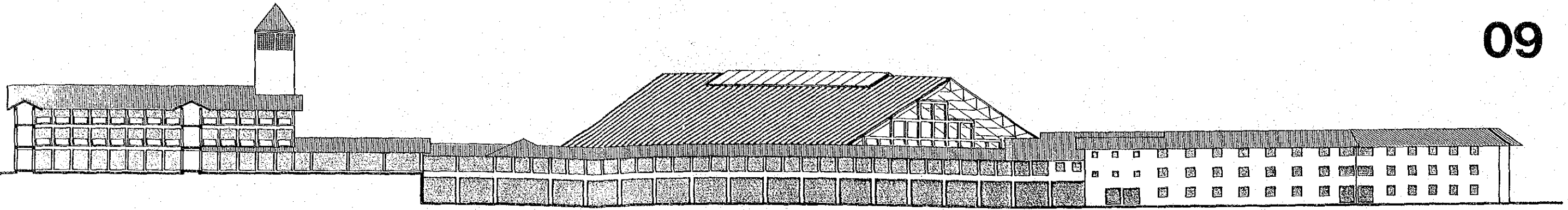


MULTI PURPOSE HALL B~B SECTION



ELEVATION, SECTION

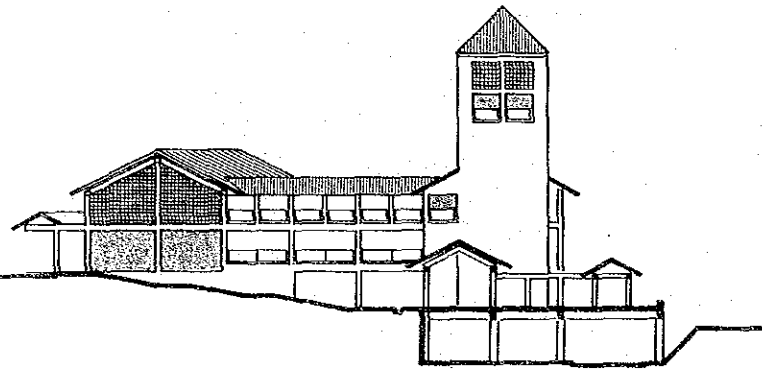




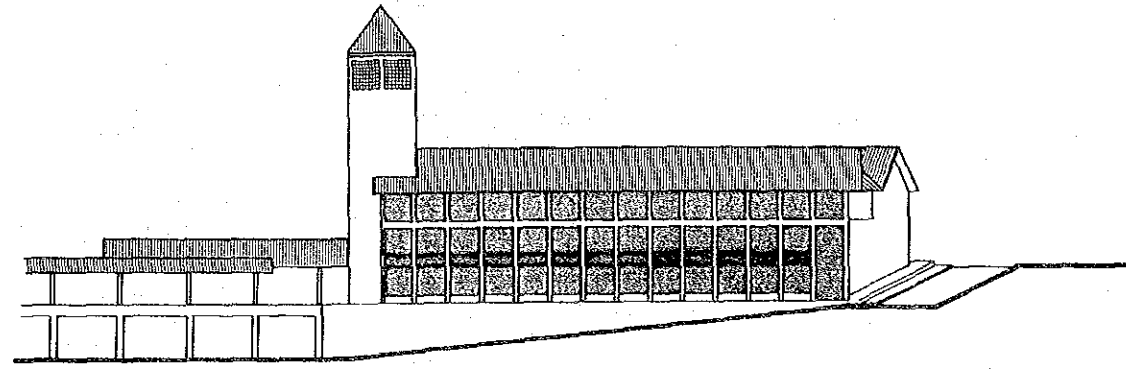
ADMINISTRATION & EXHIBITION BUILDING

MULTI PURPOSE HALL
NORTH ELEVATION

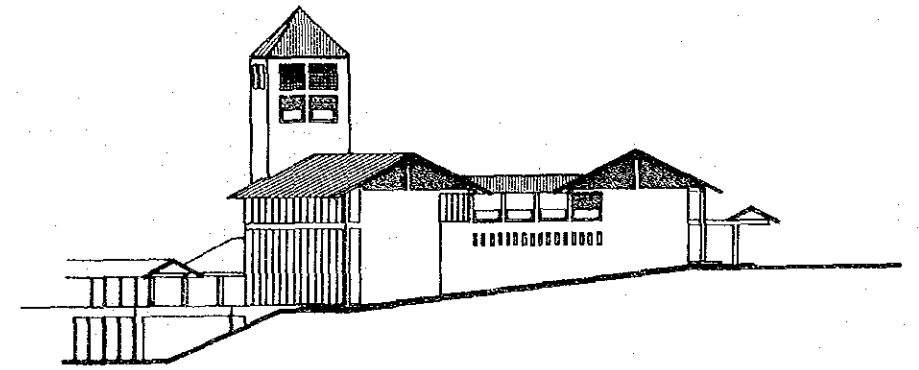
HOSTEL



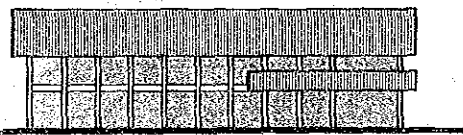
ADMINISTRATION & EXHIBITION BUILDING WEST ELEVATION



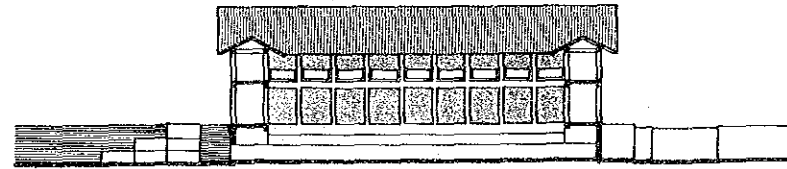
ADMINISTRATION & EXHIBITION BUILDING SOUTH ELEVATION



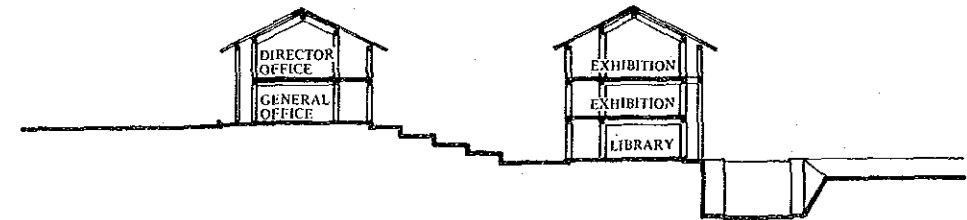
ADMINISTRATION & EXHIBITION BUILDING



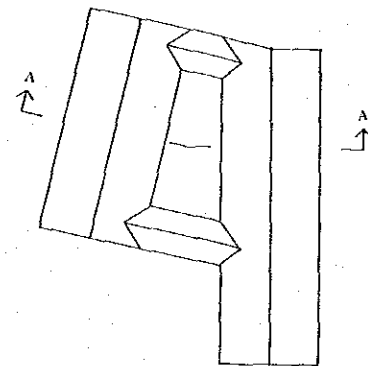
ADMINISTRATION & EXHIBITION BUILDING NORTH ELEVATION



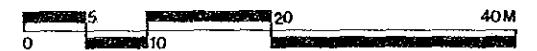
ADMINISTRATION & EXHIBITION BUILDING SOUTH ELEVATION

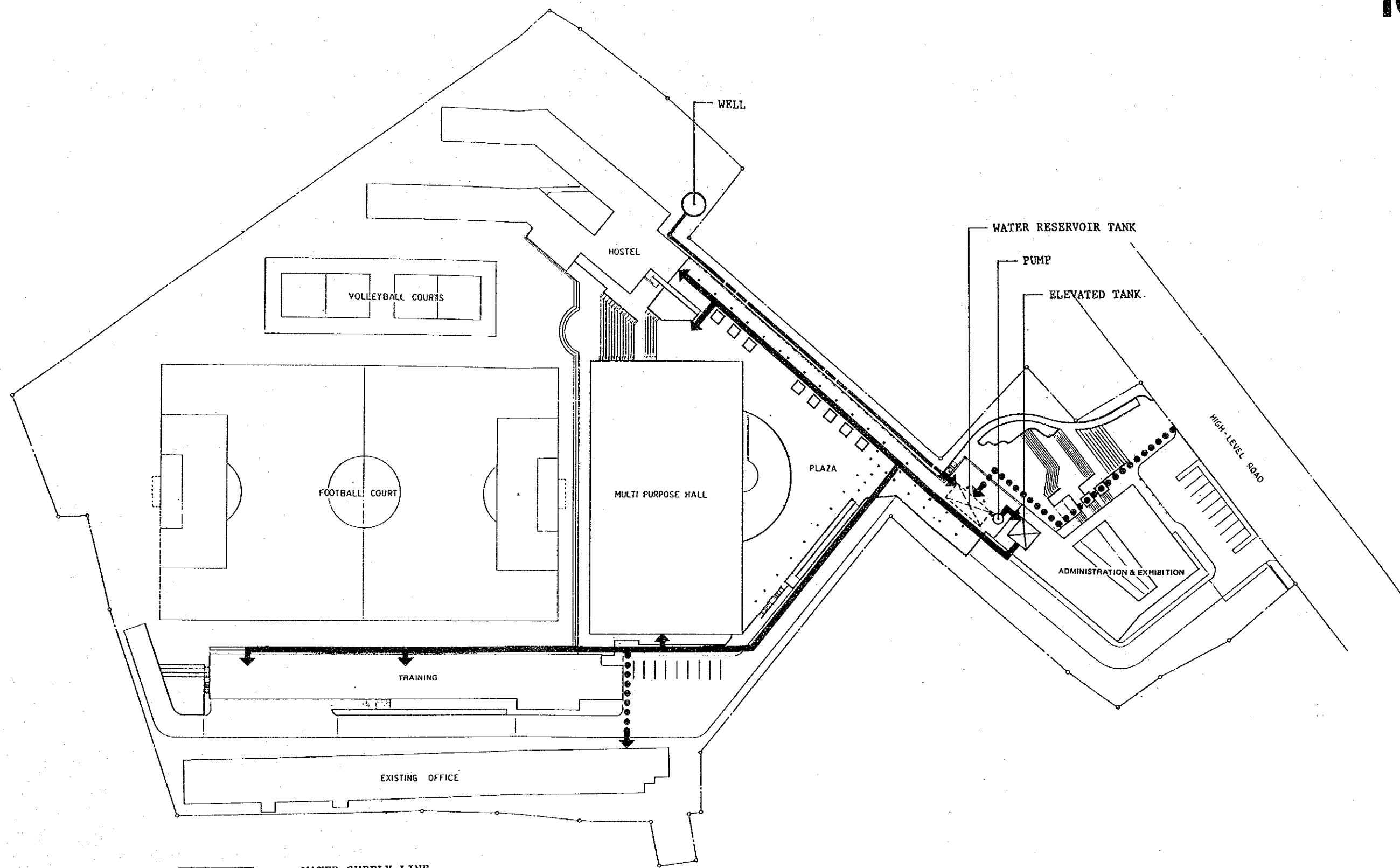


ADMINISTRATION & EXHIBITION BUILDING
A ~ A SECTION



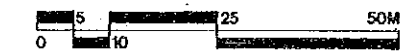
ELEVATION, SECTION
(ADMINISTRATION AND EXHIBITION BLDG.)

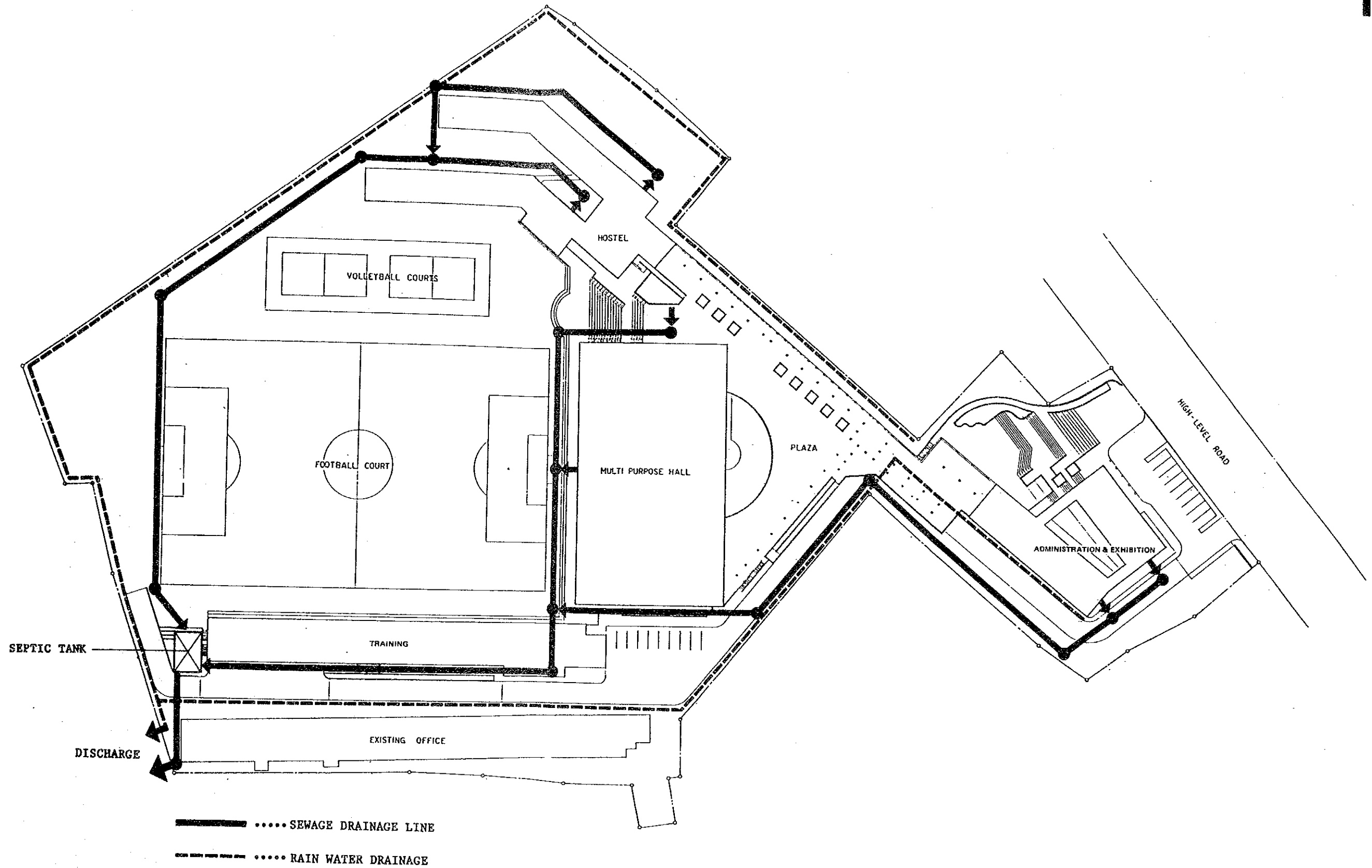




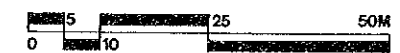
- WATER SUPPLY LINE
- - - - WATER MAIN FROM WELL
- EXTENSION LINE (SRI LANKAN SIDE)

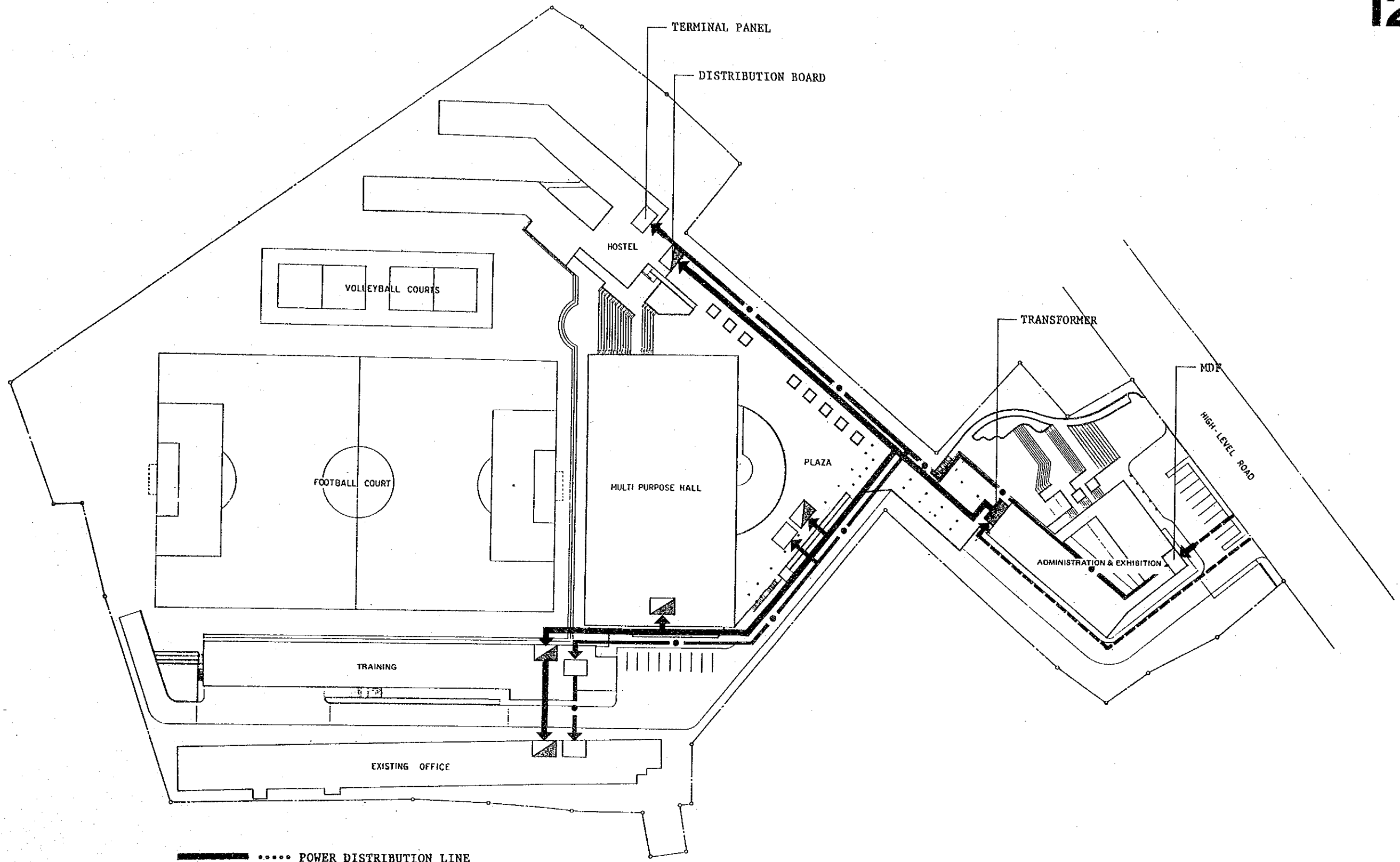
WATER SUPPLY SYSTEM





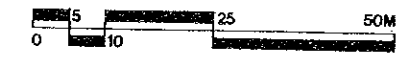
DRANAGE SYSTEM





- POWER DISTRIBUTION LINE
- TELEPHONE MAIN LINE
- - - - - EXTENSION LINE (BY SRI LANKAN SIDE)

ELECTRICITY AND TELEPHONE SYSTEM



CHAPTER 6. PROJECT EXECUTION

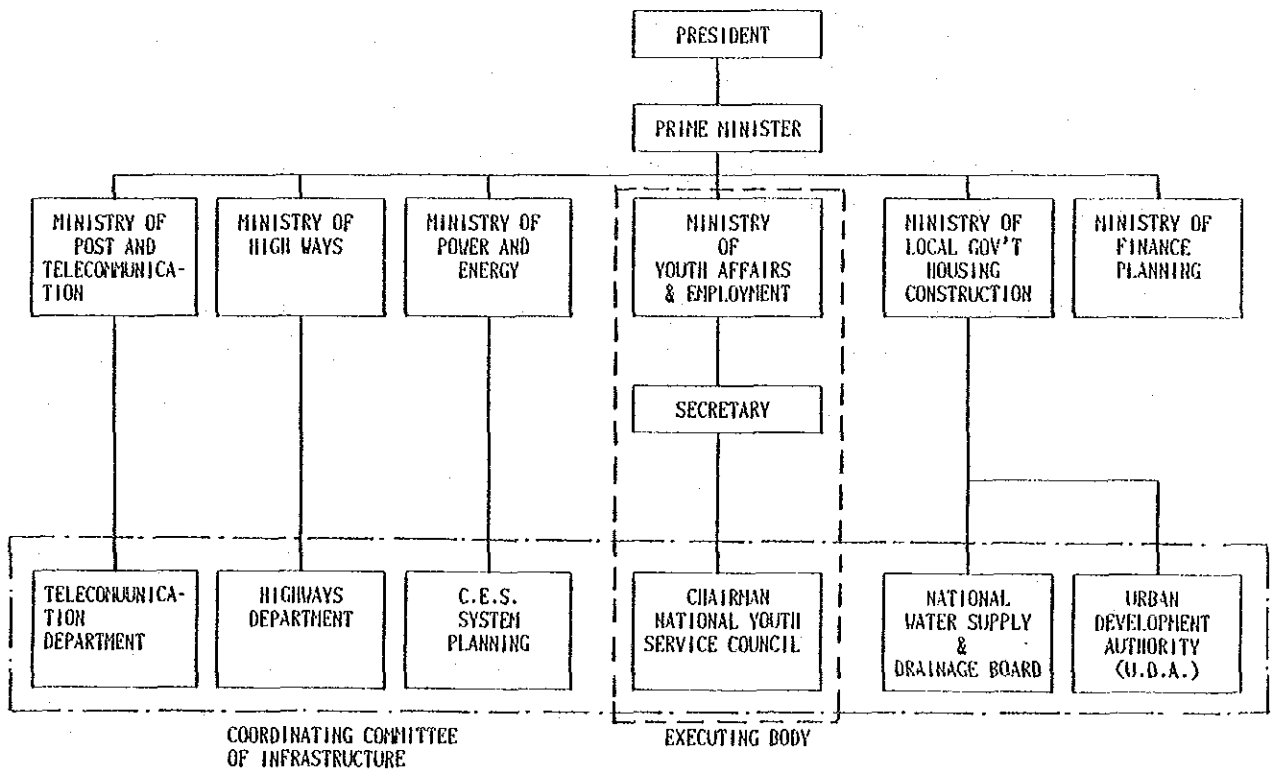
6-1. Execution body

The competent agency of the Government of Sri Lanka for the planning and execution of this project is the National Youth Services Council (NYSC) which is under the jurisdiction of the Ministry of Youth Affairs and Employment. The NYSC is headed by Mr. J.C. Ratwatte, who is the Secretary of the Ministry of Youth Affairs and Employment and is concurrently serving as the Chairman of the NYSC. The governmental agencies concerned will participate in this project by organizing an implementation committee to promote the smooth construction of the facilities.

The Department of External Resources of the Ministry of Finance and Planning (MOFP), which handles the matter with regard to the acceptance of foreign aid to Sri Lanka, is responsible for the procedures of the grant aid agreement for this project between Japan and Sri Lanka. (Fig. 6.1)

The Chairman of the NYSC is responsible for the various procedures for the project execution which includes design and supervisory service agreement, construction contract and banking arrangement.

Fig. 6-1 Executing body of the project



6-2. Construction execution plan

6-2-1 Execution plan

After the conclusion of the E/N (Exchange of Notes) agreeing the execution of the project, appointed design consultant and the NYSC will conclude the design and supervisory agreement. Subsequently, the consultant will discuss in detail the procedure concerning design, tender, award of construction contract and construction with the execution body in accordance with the basic design policy. The consultant and the execution body must clarify and acknowledge the works of the both parties, the Sri Lankan and the Japanese ensure that each party's construction work will be started as scheduled and proceeded smoothly.

The existing capacity of power supply and water supply will be sufficient to meet the needs of construction work. However, the Sri Lankan party must complete this work in regard to the permanent supply of power and telephone line installation before the completion of construction of this Centre.

It is necessary to determine the construction execution plan;

- 1) which will not force a contractor to remain without work or force it to rework by taking account of the period required for deliveries of procured equipment and materials to the site and sequence of various works to be executed as well as the time to assign technicians specific works.
- 2) which allows well balanced inputs of manpower and construction materials to the work.

6-2-2 Supervisory services plan

In accordance with the policy of the grant aid assistance by the Government of Japan, and based on the principle of the basic design, the consultant shall organize a project execution team to be in charge throughout the project period regarding the detailed design and supervisory works to carry out the construction smoothly toward the completion of construction of facilities.

During the execution and supervisory process, the consultant shall station a supervisor with proper technical ability on the construction work and to communicate with the concerned parties. In addition, the consultant shall dispatch engineers from time to time for a short term according to the progress of the work for spot inspection, attendance and direction of the construction execution.

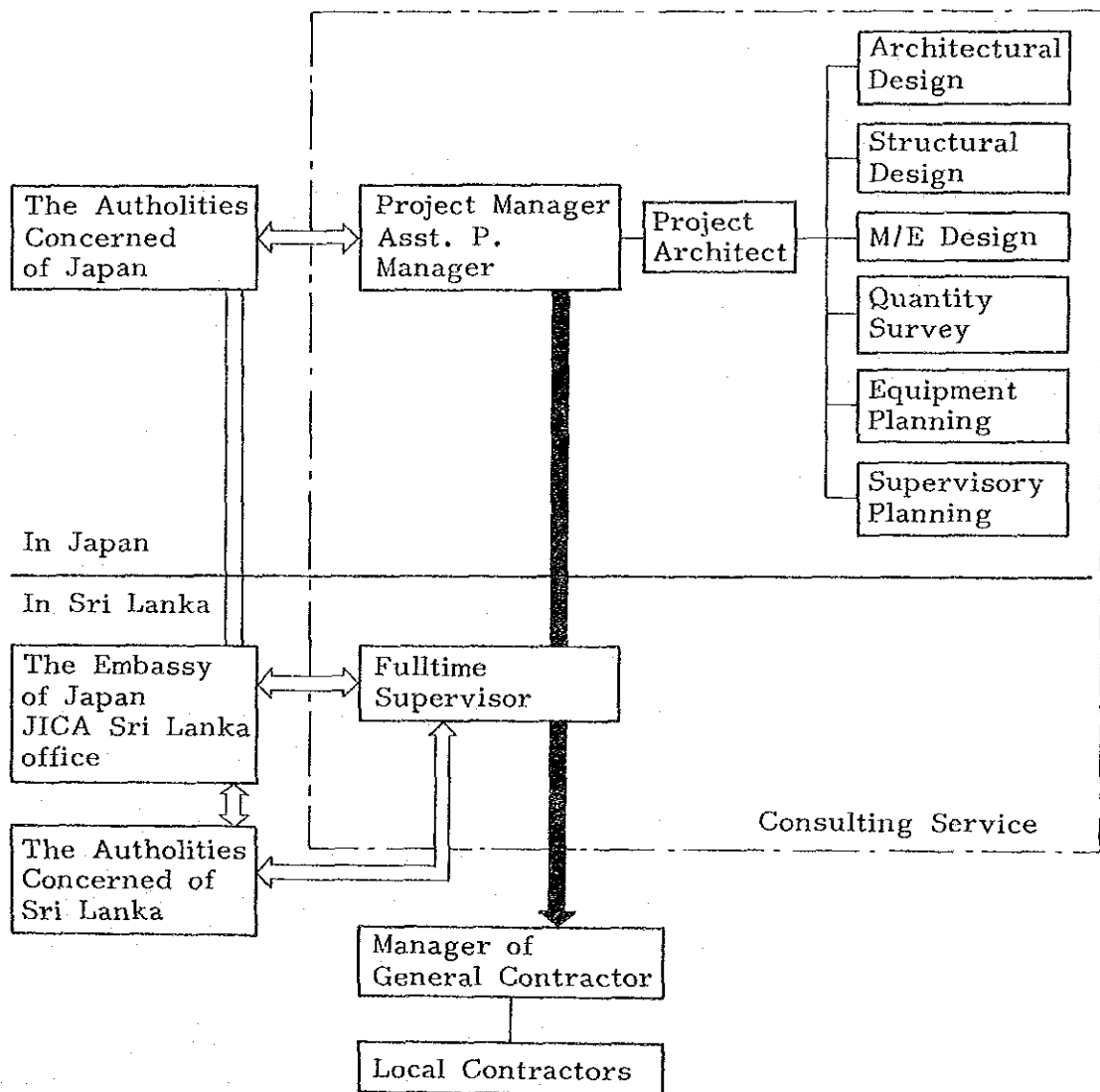
1) Principal policies of the supervisory plan:

The consultant shall

- o attempt the smooth completion of construction of the facilities in accordance with to the predetermined construction process while maintaining close communications with the parties concerned of both countries,
- o provide proper and prompt instructions and advices to the contractor for the construction of the facilities strictly in accordance with the design documents,
- o adopt the construction method which allows the utilization of the locally available materials and equipment as much as possible,
- o adopt the construction methods and techniques currently applied in Japan and aim at the technical transfer to Sri Lanka so as to enhance the significance of this grant aid project, and

- o give proper guidances and instructions for the administration and maintenance of facilities after the completion of delivery to the concerned party of Sri Lanka in order to facilitate smooth operations of the Centre.
- 2) Details of the supervisory work;
- (1) Assistance in making construction contract;
Selecting contractors, determining the method of contract, preparation of the contract documents, study of the construction schedule, and attendance at the conclusion of the contract.
 - (2) Inspections and approvals on the shop drawings and others;
Inspecting and approving the shop drawings, the construction materials, the samples of finished materials and equipment to be submitted, used and installed by the contractor.
 - (3) Instruction of the construction work;
Examination of the construction plan and process, giving guidance and instructions to the contractors, and reporting the progress of construction work to the owner.
 - (4) Approval for payment
Checking and approving the contents of the payment requisition notes submitted by the contractor, concerning the interim and final payments.

Fig. 6-2-2 Supervisory system



(5) Attendance in inspection;

The consultant shall inspect the progress of work from commencement to completion, and shall properly instruct the contractors. The consultant shall attend at the time of the delivery and acceptance of the contracted items after the consultants acknowledgement that the construction had been completed in accordance with the terms and conditions of the contract. On the delivery and the acceptance, the consultant receives the approval of acceptance from the owner so as to accomplish the consultant's duty. The consultant also reports to the relevant agencies of the Government of Japan in regard to the progress of the construction of facilities, procedures of payments, and delivery and acceptance of the facilities.

6-3. Scope of works

The responsibilities of both countries in regard to the scope of the construction works are as follows:

6-3-1 Works to be done by the Government of Japan

1) Facilities

a) Training facilities

1. Workshops and laboratories

Electronics

Electric appliances assembly, repairing, servicing and maintaining

Refrigeration and air conditioning

Computer engineering and programming

Video production

Radio and acoustic engineering

Home science

2. Lecture rooms 8 rooms
3. Seminar rooms 4 rooms (Including large seminar room)
4. Language laboratory 1 room
5. Library 1 room

- b) Multi-purpose hall (Gymnasium), Seating capacity of 1,500 persons
Cafeteria and auxiliary facilities
 - c) Hostels for 200 residents, canteen and auxiliary facilities
 - d) Exhibition hall of 500 m² approximately
 - e) Administration office of the Centre
 - f) Out door facilities
Foot ball field, volleyball courts
- 2) Infrastructural works
- a) Water supply facility (within the boundary of the premise)
 - b) Borehole work
 - c) Power substation facilities (on the premise)
 - d) Telephone exchange facilities
- 3) External works
- a) Road within the premise
 - b) Drainage and sewage disposal facilities
 - c) External lighting
- 4) Equipment for training activities

- 5) Supplementary works related to the project
 - a) Transportation of the equipment and construction materials from Japan to Sri Lanka.
 - b) Inland transportation of the equipment and materials from the unloading port to the proposed project site.

6-3-2 Works to be executed by the Government of Sri Lanka

- 1) Construction site and external work
 - o Acquisition of the site required for the construction of the Centre and the execution of clearing, leveling and reclamation of the ground.
 - o Construction of the parking area
 - o Construction of the gate and fence in and around the site
 - o Landscaping and tree planting
- 2) Infrastructural work
 - o Connecting power line and city water supply line to the facilities on the site.
 - o Connecting the telephone trunk line to the main distribution frame/panel (MDF) of the building.
 - o The drainage city main (for storm, sewer and others) to the site.
- 3) General furniture, equipment, and miscellaneous items which are not included in the provision by the Japanese side.
- 4) Arrangement and payment of expenses
 - a) To bear the following expenses;
 - o Expenses incurred to make banking arrangements
 - o Expenses incurred in connecting the incoming power, water and telephone lines.
 - o Expenses incurred in arranging the tax and duty exemption procedures

- b) To take prompt arrangements in regard to custom clearance and inland transportation
- c) To take necessary exemption procedures in regard to the duties, domestic taxes, and other surcharges and levies imposed on the Japanese engaging in the execution of the project in Sri Lanka based on the verified contract.
- d) To provide the necessary conveniences for the above Japanese in regard to their entry into and stay in Sri Lanka for the accomplishment of their duties.
- e) To place the staff required for the management and implementation of this project under the careful personnel placement plan.

6-4. Schedule of execution

After the conclusion of the Exchange of Notes (E/N) by the both governments regarding the grant aid assistance system by the Government of Japan, the construction of facilities shall be carried out through three stages namely; the preparation of detailed design documents; conclusion of the contract through the tender; and the execution of the construction work.

The competent authority of the Government of Sri Lanka to make the Exchange of Notes shall be the Department of the External Resources of the Ministry of Finance and Planning.

1) Detailed design

The construction contract documents shall be prepared based on the basic design. The documents consist of detailed design drawings, specifications, calculation sheets, and cost estimation, etc. The percentage of error between the basic design and the detailed design is limited to within 10%. During the detailed design stage, discussion and acknowledgement shall be made between the consultant and the relevant Sri Lankan party at each of preliminary, intermediary and final stages. Tender will be held after final approval is given by the Sri Lankan party through the final arrangement mentioned above. The period required for the detailed design is estimated to be five months.

2) Tender

After the completion of detailed design, and pre-qualification (P/Q) of Japanese general contractors to be invited to participate in the tender, the tender shall be held through public announcement. As a result of evaluation, selected tenderers will be invited to participate in the tender by the implementation body, and the results of the tender will be opened in Japan. The officers in charge of this project from Sri Lanka may present themselves at the time of the tender opening.

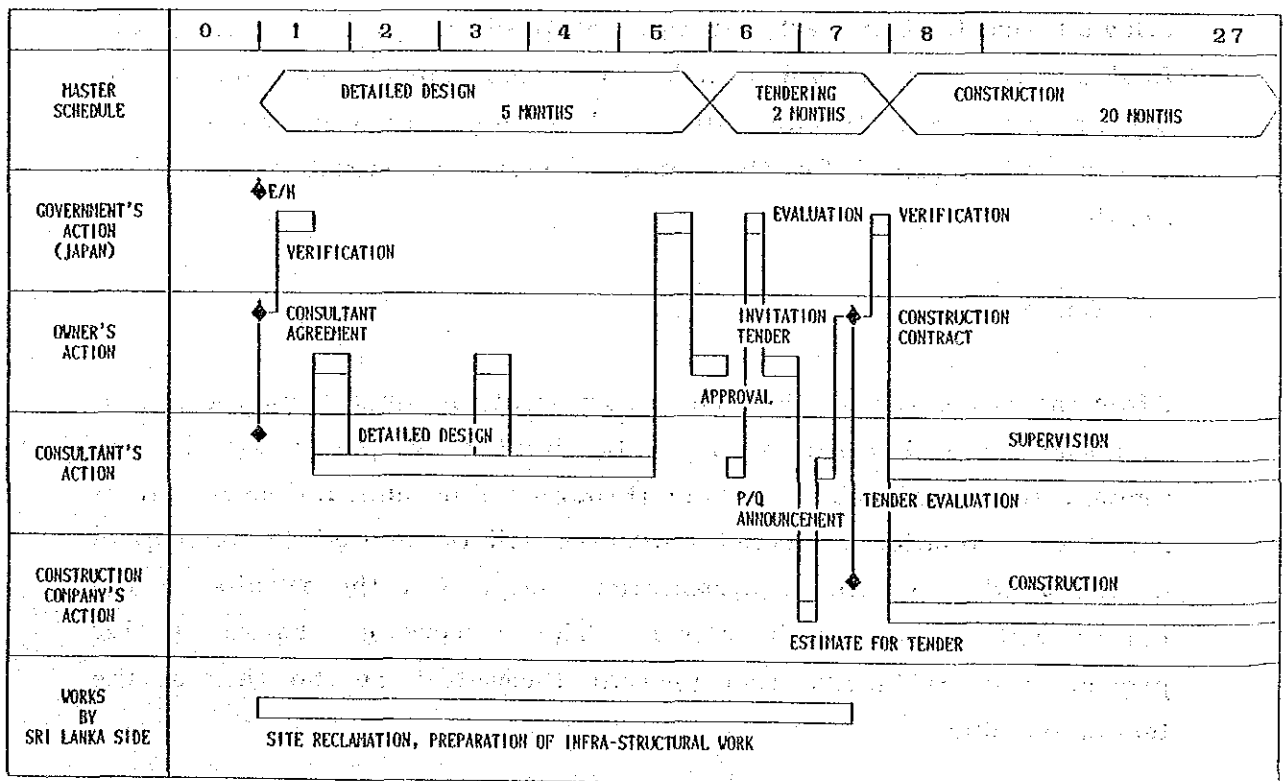
The tenderer submitting the lowest price in the general competitive tender will make a contract with the NYSC. The time required for the tendering and contracting is estimated to be two months.

3) Construction

The construction work will be commenced after the construction contract is signed by the parties concerned followed by the verification on the contract by the Government of Japan.

Judging from the scale and contents of the facilities, the time required for the construction of this Centre is expected to be about 20 months provided that the procurements of the required equipment and materials have been carried out smoothly, and the preliminary preparation work to be performed by the Sri Lankan government has progressed smoothly.

Fig. 6-4 Execution schedule



6-5. Procurement of construction materials

Taking the account of reduction in costs, maintainability of the facilities, and the contents of facilities, the construction equipment and materials shall be locally procured as much as possible. The equipment and materials procured locally and from Japan or other countries that can be used for the construction of this Centre are as follows:

	Equipment and materials procured in Sri Lanka	Equipment and materials procured in Japan and other countries
Architectural work	Aggregate (Sand, crash stone) Cement (for masonry, finishing) Concrete block Brick Stone, tile Terrazzo tile Corrugated slate Roof tile Timber	Cement (for structure) Steel bar Structure steel Plywood for form work Waterproof material Metal fittings Wooden fittings Glass Paint
Ventilation work	PVC pipe	Ventilation fan Steel pipes, steel sheets
Plumbing work	PVC pipe Concrete pipe Sanitary fixture (partially)	Sanitary fixture Valves, pipes Pump
Electrical work	PVC pipe	Transformer Distributing board Telephone exchange Wire, cable Lighting fixture Electrical appliances

6-6. Plan for operation, management and maintenance

The major sections of the headquarters of NYSC, which is the implementation body of the National Youth Centre, are in operation in a privately owned building in Colombo while other sections of it are in operation in the buildings situated at the proposed project site as the floor area of the said building in Colombo is not large enough to accommodate all of the sections of NYSC headquarters.

As the execution and promotion of the educational training projects are the objectives of the NYSC's activities, the realization of the National Youth Centre will provide a base for nationwide activities of the NYSC.

The operation of the National Youth Centre itself will become consequently the main task of the NYSC headquarters and the NYSC is planning to shift the said major sections of headquarters from the present office in Colombo to the facilities of the National Youth Centre upon completion of the construction in order to improve the efficiency and integrate all of the works which are carried out individually at the said two places at present. The NYSC headquarters, therefore, becomes fully and directly responsible in the operation, management and maintenance of the National Youth Centre. As a result of the above arrangement, the number of new employees to be recruited for the Centre will be minimized. At the same time it relieves the NYSC from the burden of the current payment of the rent in Colombo.

The Centre's hostel facility will be utilized, according to the NYSC's plan, for the training not only to the youth, but also to the NYSC's regional staff coming from various districts. The staff training program, therefore, literally can be implemented at the central facilities of the NYSC thereafter, and the outcome of further improved efficiency in the training activities will be expected.

The above concept of the NYSC concerning the operation, administration and maintenance after the completion of the Centre's construction is realistic and practical for the implementation of smooth operation and maintenance and for the execution of the activities in line with the objectives.

6-6-1 System of operation, management and maintenance

A total of 70 persons including the Chairman will move to the facilities of the National Youth Centre from the existing headquarters in Colombo upon the completion of the Centre, and will manage the facilities thereafter.

Apart from the above, a total of 54 new employees, including vocational training staff, maintenance staff and other service staff will be recruited for the Centre. A total number, therefore, will be 124 as the employed staff for the Centre. (Fig. 6.6.1)

6-6-2 Operation and Maintenance

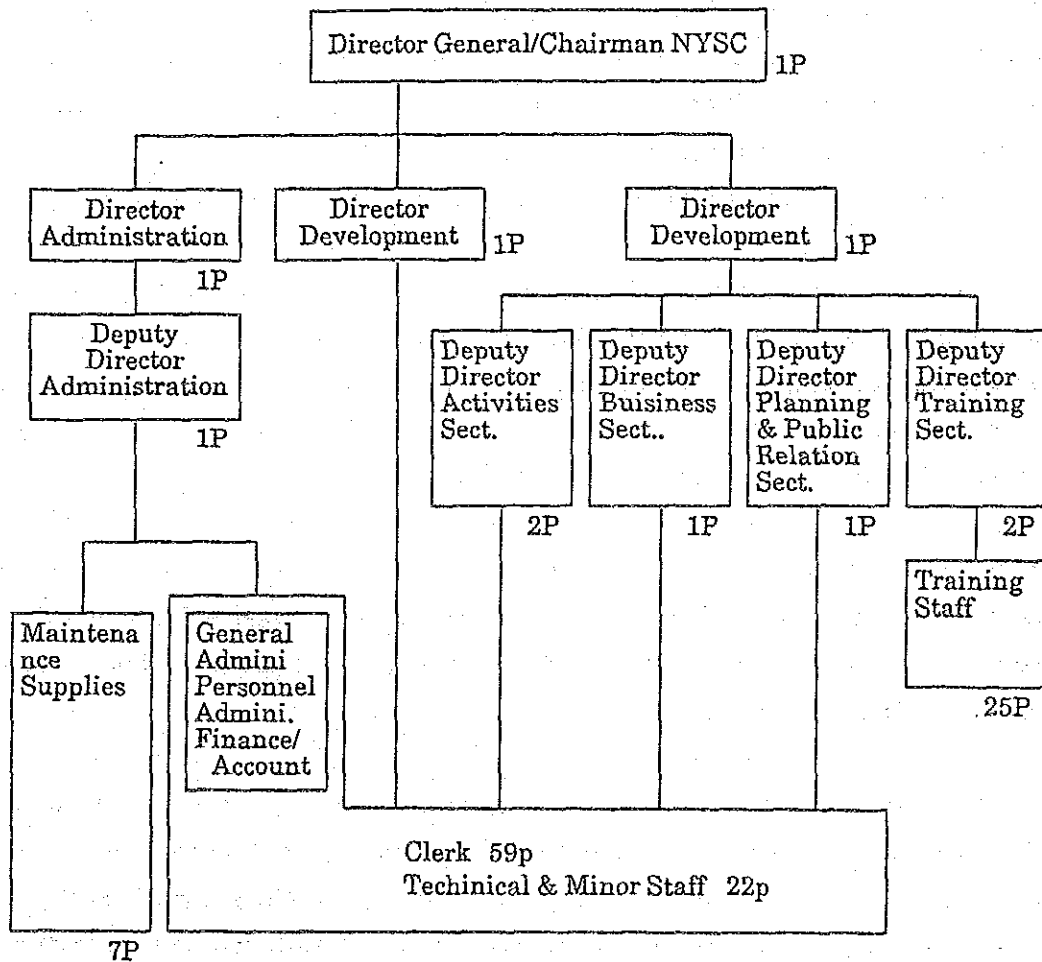
The building shall be basically designed for the ease of maintenance. Explanation of operation, administration and maintenance of buildings and equipment installed, and training equipment and materials will be made at the time of delivery. Proper maintenance method will be proposed and explained to the personnel in charge of maintenance of each section and maintenance engineers for the Centre by using the instruction and maintenance manuals and by means of demonstration.

As for the management of the buildings, guidance and instructions will be made in regard to the operation and maintenance methods. The said personnel will also be instructed for the operating method, proper operating time and maintenance method as to the equipment installed and training equipment and materials.

The names of persons to be in charge of maintenance and construction or the names of distributors, to be contacted in case of the needs for repair or procurement after the delivery of the facilities, will be given to the Sri Lankan party.

An appropriate maintenance plan, capable of utilizing the functions of this Centre effectively, needs be determined by taking into account the time spent for using the curriculum, facilities and equipment based on the above maintenance methods. Further, the Ministry of Youth Affairs and Employment needs to provide sufficient budget for the expenses annually to do so.

Fig. 6-6-1 Staff organization chart for the Centre



6-6-3 Operation and maintenance costs

The expenses required for management, maintenance and operation of the facilities of this Centre will be covered by the budget of the Ministry of Youth Affairs and Employment.

Based on the study and the analysis of the collected data maintenance expenses are estimated as follows;

Personnel expenses

(Wage and salary for 54 person to be newly recruited)

Rs. 500,000.-

Facility operation, lighting and heat expenses

Rs.1,400,000.-

Maintenance expenses for the facilities, equipment and materials

Rs. 500,000.-

Education and training material and activity expenses

Rs. 800,000.-

Total

Rs.3,200,000.-

CHAPTER 7. PROJECT EVALUATION

1) Socioeconomic evaluation

The positive economic development policy promoted by the Government led by President Jayewardene since 1978, has focused on large scale public investments in the Mahaveli scheme, free trade zone, and the urban housing construction project.

It intends to grow out Sri Lanka from the monoculture economy and to break away from the stagnation of productive activities. These projects will also have great impact on creating employment, preserving water resources as well as the increment of agricultural production, industrial production and exports or the development of villages and urban areas.

It achieved positive results as exemplified in the high economic growth rates since 1978. However, not all the people desiring to enter newly into the labor market every year and the remained unemployed can find their jobs. Furthermore, it is also an undeniable fact that the violent destructive activities caused by extremists and racial antagonism have resulted in social distortion. Although social unrest has hindered the economic development policy of the present Government, the Government has been attempting strengthening its policy aiming at further economic development while solidifying its long term stable administration.

Because of the present situation, it has become extremely important to lead the young generation and to concentrate their power on the development of the nation. Thus, the Government of Sri Lanka has continued to place great importance on improving and expanding school education and cultivation and training of the youth.

Today, it is said that the greatest dissatisfaction of Sri Lanka's youth is their inability and lack of technical eligibility to find jobs and this dissatisfaction is especially serious among the educated youth as they still remain unemployed.

The efforts are being made to resolve the youth's various desires or subconscious dissatisfaction, and to make the youth participate in the nation's development with their recognition and realization for such needs through the focus on promoting employment projects in parallel with the strong promotion of cultural, sports and recreational activities.

The NYSC under the Ministry of Youth Affairs and Employment has continuously promoted cultural and sport activities as a central agency for the youth services. Recently these activities have expanded throughout Sri Lanka through the youth's participation in the local youth clubs.

However, the total number of facilities at present for the social education and cultural activities is definitely insufficient, and it is being an obstacle in promoting and developing youth activities.

Upon completion of this project, the youth of Sri Lanka will have a central facility for educational and cultural activities for the first time. This should definitely result in further development of activities. Furthermore, demands have increased for those vocational training courses which will be provided by this Centre. From this standpoint, this Centre will be expected to respond to the needs of young generation in Sri Lanka effectively. In addition, it is significant that not only the young generation, but a large number of citizens from various levels can benefit from this project as the common place for social education.

The newly constructed Centre will rank with two other significant facilities that are used as the social, educational and cultural facilities. The Bandaranaike Memorial International Conference Hall (BMICH) was built with the assistance from the People's Republic of China, and Sri Lanka Foundation Institute (SLFI) was built with the assistance from the Federal Republic of Germany. It is significant that this Centre will become the third facility of this kind with its value of the contribution to the country. These facilities contribute to youth activities although their field of activities are different.

2) Financial evaluation

Development Costs

The total expense for the execution of this project is the sum of the construction costs to be borne by both Japan and Sri Lanka. And the amount to be borne by Sri Lanka is estimated 2.5 million rupees including 1.5 million rupees of the cost for infrastructure work and 1 million rupees of the cost for procurement of furniture and miscellaneous items.

As for the cost for infrastructure work, the total amount is supposed to be paid by the decentralized budget for the district of Maharagama basically.

The total budget given to the NYSC for the fiscal year of 1985 is Rs. 36,000,000 (Approx. J. Yen 350 million). This amount includes Rs. 4,000,000 (Less than J. Yen 40 million) for expansion or development of the NYSC's facilities. Because of the insufficient annual budget of Sri Lanka, the NYSC has had a great difficulty in expanding and constructing a new facility needed for developing activities for the young generation. It seems impossible to develop and expand youth education and cultural activities considering the capacity of the existing facilities.

The fact that this facility can be used by the young generation throughout Sri Lanka as a lodging facility, a multipurpose hall capable of accommodating 1,500 persons and serving as an indoor gymnasium, may substantially increase the effectiveness of this Centre. Thus, the costs required for the construction are justified in that the Centre will be capable of producing the desired effects and results.

Operation Costs

The facilities of this center are designed to be operated at the minimum maintenance costs by taking the natural conditions of the site into account. The annual total operating cost of this center is expected to be Rs. 3,200,000. A break-down of costs is as follows: personnel expense for technical and service staff newly employed, Rs. 500,000; operation costs including heating and lighting expenses, Rs. 1,400,000; facilities and equipment maintenance expenses, Rs. 500,000; teaching materials and activity expenses, Rs. 800,000.

The head quarter of the NYSC currently spends the total amount of Rs. 1,900,000 for the expenses of the rental and maintenance of the present office in Colombo and activities conducted in Colombo area. Therefore, this amount of Rs. 1,900,000 should be used to pay a part of the total required amount of operation and maintenance expenses of the National Youth Centre after the shifting of the major sections of the NYSC from the said office in Colombo to the Centre. The balance of Rs. 1,300,000 is the newly required amount which the NYSC will secure for the operation of this Centre upon completion.

3) Management system

This Centre will be administrated and managed without requiring a new staff except the staff for the maintenance and operation of the facilities. The Chairman of the NYSC will be the responsible person for the Centre. The plannings and operations of the relevant divisions of the Centre are also under the control of the Directors of each division of the NYSC. These operation and management systems are considered to be appropriate if the present various educational and training activities of the NYSC should be performed with this Centre as their central facilities in the future.

CHAPTER 8. CONCLUSION AND PROPOSITION

8-1. Conclusion

Educating and cultivating the young generation toward socioeconomic development of the country is an extremely important task for Sri Lanka. This project is intended to contribute greatly to the promotion of employment of the youth in Sri Lanka, and to the development of social education for the youth. By providing training courses for the kinds of jobs having high demands for employment and by responding to the needs for social educational facilities that are now absolutely insufficient in number, the result of this grant aid may be extremely practical and effective.

It is greatly significant that the Government of Japan is assisting Sri Lanka in both aspects, institutional education and social education, together with the implementation of the project of the Matara College of Education, which is currently under construction through the grant aid provided by the Government of Japan.

This Centre, therefore, is expected to lead and activate the youth activities throughout Sri Lanka as a long-term central facility for the activities of education, culture and sports for the youth.

8-2. Proposition

1) Establishing a system for planning and evaluating the activities for youth education

In view of the great development in the youth activities in Sri Lanka and of the serious shortage of facilities to respond to such activities, the facilities of this project may surely be used effectively. However, it is important that the Centre will be operated aiming at the daily promotion of youth education for execution in more effective ways to meet the social demands.

For this purpose, the Centre must make daily study to execute planning which permits to grasp the trend of the young generation and to act properly to respond to the needs. Also, a system capable of evaluating in detail the activities and planning executed is indispensable. The basic design study team made the study in Sri Lanka and the study revealed that Sri Lanka lacks comprehensive information in regard to the projects and activities that have been executed for the youth. It is recommended that the NYSC carries out study and evaluation on the subjects, levels and objectives of the previous activities and results of those activities so as to develop more effective execution of such project in the future.

2) Establishing the project execution system

It is agreed that a committee including all persons, in charge at the government agencies concerned with the execution of this project, will be established to promote the construction of this Centre.

The NYSC is expected to play the role of a coordinator among various government agencies concerned in order to make the said committee to fully function during the implementation for the smoother progress of the construction work.

3) Securing budget

For the implementation of the project, it is essential to secure the necessary budgets for the construction, administration, management, operation and maintenance of this Centre. It is, therefore, indispensable that the NYSC secures all the necessary budgets for the Centre in advance without any failure in so doing.

4) Maintenance system of the facilities

Under the existing maintenance system for a public facility of Sri Lanka, technicians of the government agencies and ministries related to electricity and equipment are called to perform the necessary maintenance work whenever such necessity arises. In view of the large scale of this Centre, it is desirable that full-time maintenance technicians with proper ability be stationed and the maintenance should be made to suit the occasion continuously. The maintenance staff should be selected at an early stage prior to the completion of the construction of the Centre.

5) Securing teaching staff

Although the administration of these facilities was described in the foregoing paragraphs, the teaching staff for training courses and other necessary staff to be employed should be secured in advance. Especially, not many instructors are available for electronics and computer technology because Sri Lanka has only recently started its efforts to increase the number of expert engineers in these fields. Consequently, it is strongly desired that the sufficient number of staff be secured so that the courses can be opened when the construction of the Centre are completed.

APPENDIX

- 1. Dispatch of the Study Team**
- 2. Minutes of Discussions**
- 3. Reference Data of Construction Site**
- 4. Data for Maintenance and Management Cost**
- 5. List of Training Equipment**

APPENDIX 1. Dispatch of Study Team

The study team noted below was sent to carry out the basic design study and draft report study for the of the National Youth Centre.

1) Members of Basic Design Study Team

o Basic Design Study Team (from June 18 to July 8, 1985)

Name	Designation
Mr. Hideo ENDO	Team Leader Director Grant Aid Planning and Survey Dept. Japan International Cooperation Agency
Mr. Junzo SAGO	Grant Aid Policy Grant Aid Division Economic Cooperation Bureau Ministry of Foreign Affairs
Mr. Osamu MATSUMURA	Projector Manager Kume Architects-Engineers
Mr. Akihiko TAKEUCHI	Architectural Designer Kume Architects-Engineers
Mr. Shigeru NAKABAYASHI	M & E Engineer Kume Architects-Engineers
Mr. Koji KODAMA	Equipment Planner Kume Architects-Engineers
Mr. Takashi UMENO	Structural Engineer Kume Architects-Engineers

o Draft Report of Basic Design Study Team (from Sept. 28 Oct. 7, 1985)

Mr. Hideo ENDO	Team Leader Director Grant Aid Planning and Survey Dept. Japan International Cooperation Agency
Mr. Osamu MATSUMURA	Projector Manager Kume Architects-Engineers
Mr. Akihiko TAKEUCHI	Architectural Designer Kume Architects-Engineers
Mr. Koji KODAMA	Equipment Planner Kume Architects-Engineers

2) Cooperative officials in the survey

o Sri Lanka Authorities Concerned

- Ministry of Finance & Planning

Mr. A. Mohamed: Director,
Department of External Resources

Mr. Senarat Weerapana: Asst. Director,
Department of External Resources

- Ministry of Youth Affairs and Employment

Mr. Ranil Wickremesinghe: Hon. Minister

Mr. J. Charitha Retwatte: Secretary (NYSC Chairman)

Mr. Lalith Weeratunga: Asst. Secretary

- National Youth Services Council (NYSC)

Mr. J. Charitha Ratwatte: Chairman

Mr. S. M. Weerasena: Deputy Director (Administration)

Mr. Benedict Kumaraage: Deputy Director (Development I)

Mr. P.D. Jayaweera: Deputy Director (Development III)

Mr. C.R. Ekanayake: Deputy Director (Technical Service)

- NYSC Gangamaya Training Centre

Mr. G. Nanisara: Director of Centre

- NYSC Belwood Training Centre

Mr. M.M. Somadasa Napa: District Youth Service Officer

- Maharagama Town Council

Mr. Sarath Kamarasiri: Electrical Forman

Mr. L.H.M. Dayananda: Superintendent of Work

- U.D.A (Urban Development Authority)

Mr. Prasona Gunawardene: Deputy Director

Mr. K.V. Dharumasiri: Architect & Planner

- C.E.B (Ceylon Electricity Board) Western Div.
Mr. N. Wickramasuriya: Divisional Development Engineer

- National Water Supply & Drainage Board
Mrs. H.S.V. Wickramage: Asst. General Manager
(Plan & Design)

- o Japanese Officials Concerned in Sri Lanka
 - The Embassy of Japan
 - H.E. Hiroshi OTAKA: Ambassador extraordinary and plenipotentiary
 - Mr. Mitsuaki KOJIMA: Councillor
 - Mr. Mitsunori ITAMI: First secretary

 - JICA Colombo office
 - Mr. Jiro HASHIGUCHI: Director
 - Mr. Minoru SASAGO: Resident officer of JOCV
 - Mr. Kiyoshi SHIRATORI: Coordinator of JOCV

APPENDIX 2. Minutes of Discussions

Minutes-1 on Basic Design Study (June 28, 1985 signed)

Minutes-2 on Draft Report of Basic Design Study (October 4, 1985 signed)

MINUTES OF DISCUSSIONS
ON
BASIC DESIGN STUDY
ON
THE ESTABLISHMENT OF
THE NATIONAL YOUTH CENTRE
IN THE DEMOCRATIC SOCIALIST REPUBLIC OF
SRI LANKA

Japan International Co-operation Agency (JICA), an official agency responsible for implementation of technical co-operation programme of the Government of Japan, has conducted the basic design study on the National Youth Centre Project (the Project) in close consultation with the Sri Lankan authorities concerned, from June, 19th to July 7th, 1985. The team headed by Mr. Hideo Endo, Director, Grant Aid Planning and Survey Department, JICA, carried out a field survey, held a series of discussions and exchanged views with the Sri Lankan delegation, authorized by the Government of the Democratic Socialist Republic of Sri Lanka, headed by Mr. J. Charitha Ratwatte, Secretary, Ministry of Youth Affairs & Employment and Director General of Youth Services.

Both parties confirmed the result of the discussions attached herewith.

28th June, 1985

Colombo

Hideo Endo

Mr. Hideo ENDO

Leader

Japanese Study Team

J. Charitha Ratwatte

Mr. J. Charitha Ratwatte

Secretary, Ministry of

Youth Affairs & Employment and
Director General of Youth Services

*Chairman, National Youth
Services Council.*

1. The objective of the Japanese Grant Aid Programme is to provide necessary building, facilities and equipment for the establishment of the National Youth Centre. (hereinafter referred to as "the Centre").
2. The proposed site of the Project is the land acquired by the Government of Sri Lanka (hereinafter referred to as "the Project Site"). The Project Site is shown in Annex I.
3. The objectives of the activities of the Centre are:
 - to promote goodwill and mutual understanding between youth in Sri Lanka and in other countries;
 - to widen the knowledge of youth and to give training in fields relevant to development;
 - to encourage cultural, literary and artistic activities among youth;
 - to provide recreational facilities for youth;
 - to provide opportunities for the participation of youth in the formulation and implementation of policy;
 - to develop the inherent characteristics of the individual youth.
4. The Japanese Study Team will convey to the Government of Japan the desire of Sri Lanka Government that the former takes necessary measures to co-operate by providing the building and other items listed in Annex II within the scope of Japanese economic co-operation programme in grant form.
5. The Sri Lankan side has understood Japan's grant aid system explained by the Team which includes a principle of use of a Japanese consultant firm and a Japanese general constructor for the construction of the Centre.

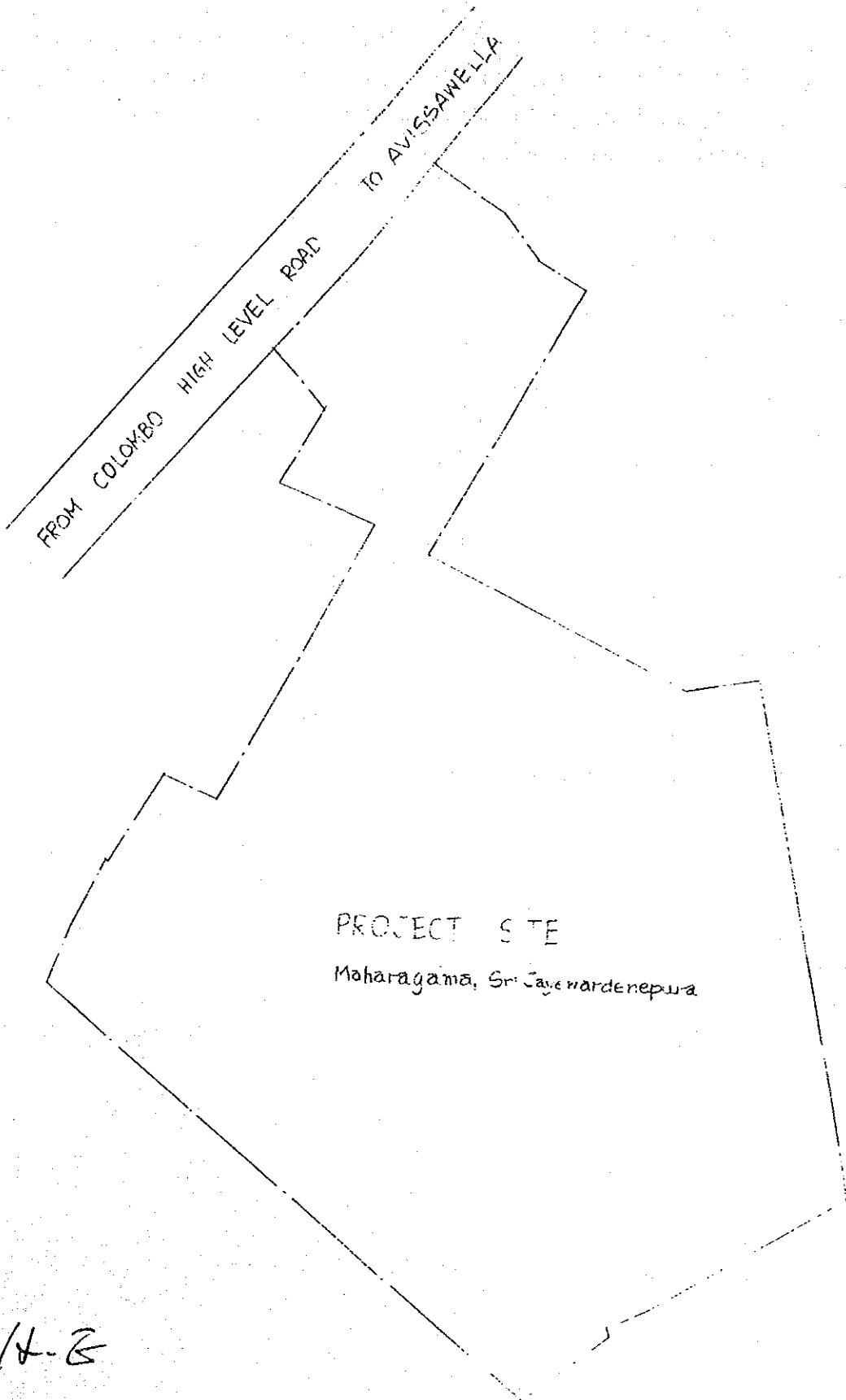
6. Major undertakings to be taken by both Governments for construction of the Centre are shown in Annex III.
7. The Japanese side will prepare the Conceptual Design of the Centre based on the study and the discussions made with the Sri Lankan authorities to be allocated under the Japanese Grant Aid Programme.

H.E

W

ANNEX I

Project Site



H.B

RW

ANNEX II

Items confirmed by both sides:

1. Facilities :

a. Training facilities:

Workshops and Laboratories for:

- Electronics
- Electronic appliances assembly, repairing, servicing and maintaining
- Refrigeration and Air conditioning
- Computer engineering and programming
- Video production
- Radio and Acoustic engineering
- Home Science

10 Lecture rooms

04 Seminar rooms

01 Language laboratory

01 Library

b. Multi-purpose hall (Gymnasium)

Seating capacity of 1,500

Cafeteria and auxiliary facilities

c. Hostels for 200 residents

Canteen and auxiliary facilities

d. Exhibition hall of 500m² approximately

e. Administration office for the Centre

f. Out door facilities

Foot ball field, Volleyball courts

- * Sri Lankan side has requested to have a smaller size of tartan track instead of a 400m track due to the limited available land.

2. Related equipment for training activities:

H-E

QW

ANNEX III

Major undertakings to be taken by both Governments

	Japanese Side	Sri Lankan Side
1. To secure a lot of land		○
2. To clear, level and reclaim the site when needed		○
3. To construct the gate and fence in and around the site		○
4. To construct the parking lot and develop the landscape in the site		○
5. To construct the road		
1) Within the site	○	
2) Outside the site		○
6. To construct the building	○	
7. To provide facilities for distribution of electricity, water supply, drainage and other incidental facilities		
1) Electricity		
a. Distributing line to the site		○
b. Drop wiring and internal wiring within the site	○	
c. Main circuit breaker and transformer	○	

14-8

	Japanese Side	Sri Lankan Side
2) Water Supply		
a. City water distribution main to the site		○
b. Supply system within the site (receiving and elevated tanks)	○	
3) Drainage		
a. Drainage city main (for storm, sewer and others) to the site		○
b. Drainage system (for toilet sewer, ordinary waste, storm drainage and others) within the site	○	
4) Telephone System		
a. Telephone trunk line to the main distribution frame/panel (MDF) of the building		○
b. MDF and the extension after the frame/panel	○	
5) Furniture and Equipment		
a. Furniture for office		○
b. Project equipment and furniture for public facilities and rooms	○	

M.E

QW

	Japanese Side	Sri Lankan Side
8. To bear the following commissions to the Japanese foreign exchange bank for the banking services based upon the B/A.		
1) Advising commission of A/P		<input type="radio"/>
2) Payment commission		<input type="radio"/>
9. To ensure unloading and customs clearance at port of disembarkation in recipient country		
1) Marine (Air) transportation of the products from Japan to the recipient country	<input type="radio"/>	
2) Tax exemption and customs clearance of the products at the port of disembarkation		<input type="radio"/>
3) Internal transportation from the port of disembarkation to the project site	<input type="radio"/>	
10. To accord Japanese nationals whose services may be required in connection with the supply of the products and the services under the verified contract such facilities as may be necessary for their entry into recipient country and stay therein for the performance of their work		<input type="radio"/>
11. To maintain and use properly and effectively that the facilities constructed and equipment purchased under the Grant		<input type="radio"/>
12. To bear all the expenses other than these to be borne by the Grant.		<input type="radio"/>

H-Z

2

MINUTES OF DISCUSSIONS
ON
THE DRAFT FINAL REPORT OF BASIC DESIGN STUDY
ON
THE NATIONAL YOUTH CENTRE PROJECT
THE DEMOCRATIC SOCIALIST REPUBLIC OF SRI LANKA

In response to the request of the Government of the Democratic Socialist Republic of Sri Lanka to the Establishment Project of the National Youth Centre (the Project) under Japan's Grant Aid, The Japan International Co-operation Agency (JICA) despatched a mission to Sri Lanka to conduct the basic design study on the Project from 19th June to 7th July 1985.

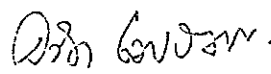
The mission carried out field survey and held a series of discussions with the authorities concerned of the Government of Sri Lanka.

As a result of the survey and discussions JICA prepared a Draft Final Report on the Study and despatched a mission to discuss on the Report with the Sri Lankan side from 28th September to 7th October, 1985.

Both parties have confirmed the result of discussions attached herewith.

4th October, 1985


.....
HIDEO ENDO
LEADER - DRAFT FINAL REPORT TEAM
OF BASIC DESIGN STUDY


.....
MR. J. CHARITHA RATWATTE
SECRETARY - MINISTRY OF
YOUTH AFFAIRS & EMPLOYMENT
CHAIRMAN - NATIONAL YOUTH
SERVICES COUNCIL

Handwritten initials

ATTACHMENT

MAJOR POINTS OF UNDERSTANDING

1. The following activities will be provided, in addition to those confirmed in the Minutes of Discussions dated 28th June, 1985, in the National Youth Centre.

1.1 Cultural Activities

The multi-purpose hall will provide facilities for dramatic and musical performances and theatrical rehearsing.

In 1985 NYSC has a plan to hold dramatic and musical performances in Colombo area as shown in the attached sheet.

1.2 Sports Activities

1.2.1 Training

Following training courses will be organized and NYSC has a desire that the instructors be provided by JOCV when necessary.

14-3.

Training courses in Volley Ball

Training courses in Basketball

Training courses in Judo

Training courses in Karate

Training courses in Wrestling

1.2.2 Matches of the above-mentioned games and arts will be organized.

1.3 At the exhibition hall

1.3.1 Permanent exhibition of the history of the people of Sri Lanka, their life styles, cultural heritage and the development plan and process of the country will be provided.

1.3.2 Changing exhibition of painting, sculpture, handicraft; etc. by the youth will be provided, which are held regularly by NYSC using various places in Colombo at high rental.

2. The Sri Lankan side has principally agreed to the basic design proposed in the Draft Report.

3. The Final Report (10 copies in English) will be submitted to the Sri Lankan side by the end of November 1985.

4. The Sri Lankan side understood the system of Japan's Grant Aid Programme and the undertakings to be taken by both Governments for realization of the Project as shown in the following list.

Major undertakings to be done by both Governments

	Japanese Side	Sri Lankan Side
1. Acquisition of construction land area		o
2. To construct the buildings Administration and exhibition building, Training building, Multi Purpose Hall, Hostel	o	
3. Outdoor facilities Football field Volleyball courts	o	
4. To construct the parking lot		o
5. To construct the gate and fence around the site		o
6. To develop the		

- landscape and planting
in the site 0
- 7. Related equipment for
training activities
and furniture
 - 1) Related equipment for
training activities 0
 - 2) General furniture 0
- 8. To provide facilities
for distribution on
electricity, drainage
and other incidental
facilities
 - 1) Electricity
 - a Distributing line to
the site 0
 - b Internal wiring 0
 - 2) Drilling well and
water supply 0
 - 3) Drainage within
the site 0
 - 4) Telephone System
 - a Telephone line incoming
to the main distribution
panel in the building 0
 - b MDF and the extension
after the main
distribution panel 0

14

CULTURAL & YOUTH FESTIVALS

Project	No. of Projects	Period	Duration	District Code	Allocation
New Year - Sinhala & Hindu	01	April	1 day	02	Rs. 10,000.00
Deepavali	01	November	1 day	15	Rs. 1,000.00
Easter Sunday	01	April	1 day	01	Rs. 1,000.00
Vesak	01	May	1 day	13	Rs. 1,000.00
Poson	01	June	1 day	20	Rs. 1,000.00
Hadji	01	September	1 day	24	Rs. 1,000.00
Thai Pongal	01	January	1 day	15	Rs. 1,000.00
Christmas	01	December	1 day	02	Rs. 1,000.00
Exhibition of Arts, Crafts and Sculpture	01	July	4 days	01	Rs. 25,000.00
Youth Award Festival	01	December	1 day	01	Rs. 50,000.00
Year-End Festival	01	December	1 day	01	Rs. 10,000.00
Youth Days	25	--	1 day	(in 25 districts)	Rs. 50,000.00
Youth Festivals	24	--	3 days	(in 24 districts)	Rs. 148,000.00
Repairs to Stages	--	--	--	--	Rs. 10,000.00
Hiring of Stages	--	--	--	--	Rs. 20,000.00
Cultural Unit (Horana Sripali)	--	--	--	--	Rs. 5,000.00
Drama Festivals	--	--	--	--	Rs. 5,000.00
T O T A L					Rs. 340,000.00