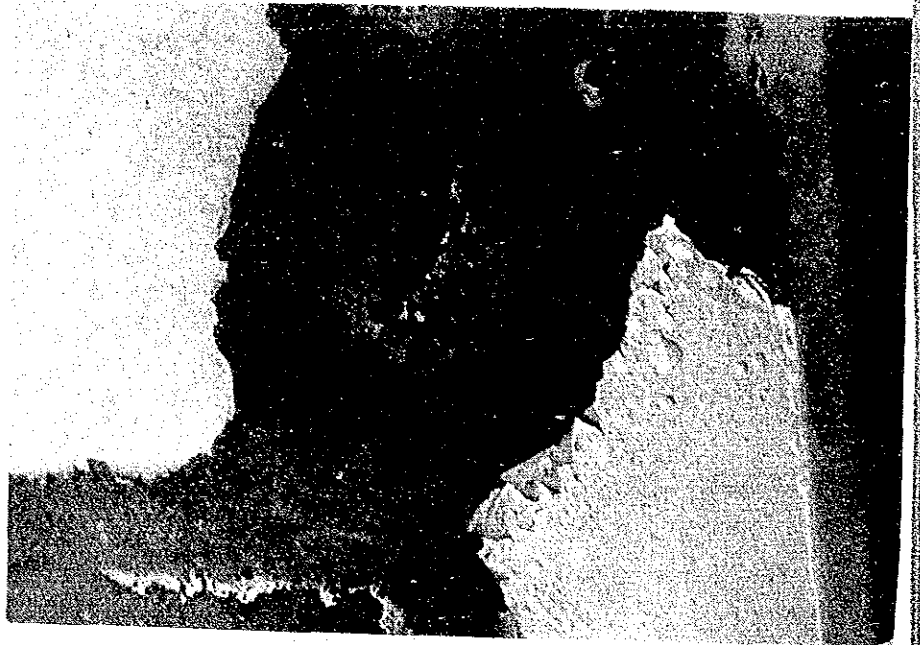
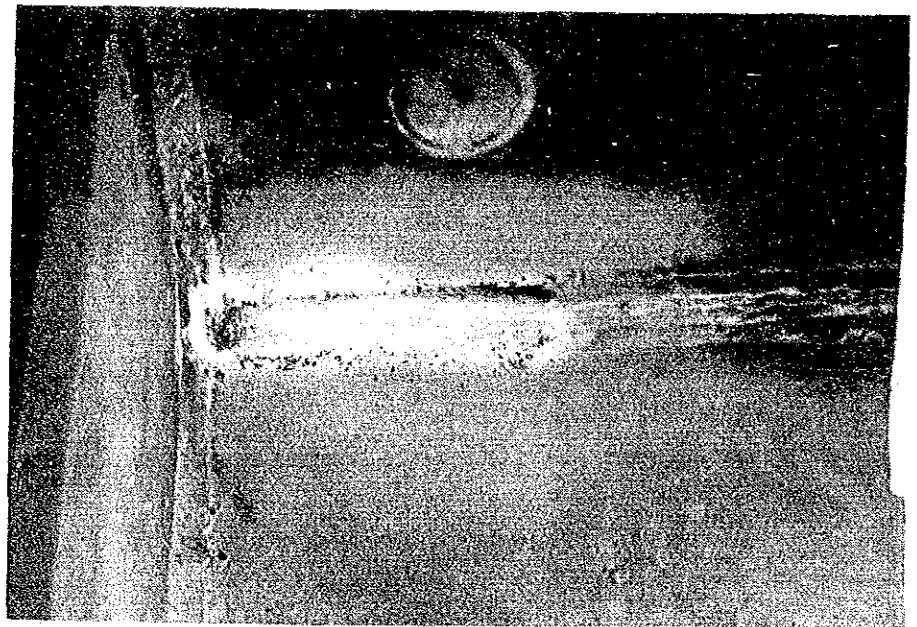


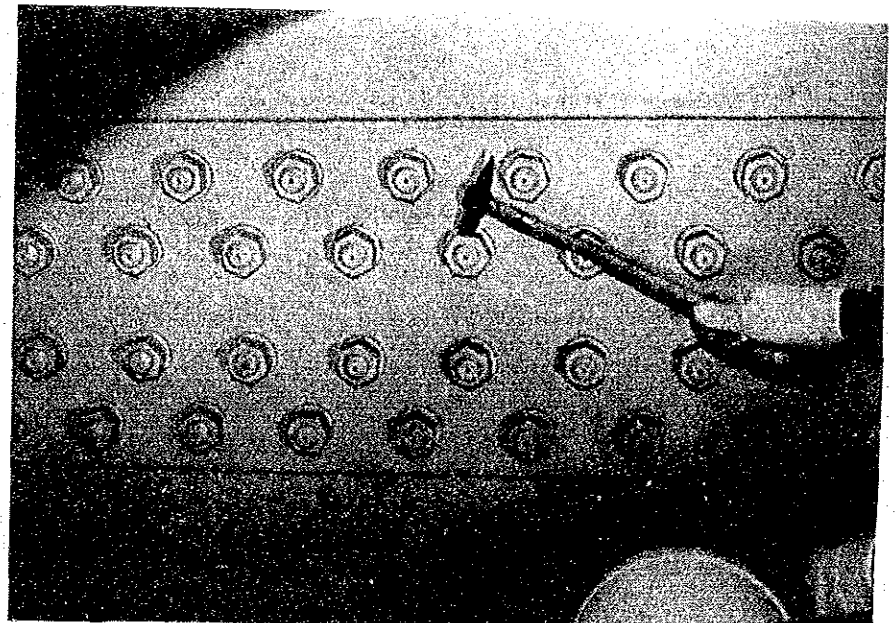
FILM NO.		MEGA NO.	19
DATE		DATA	1.9.2
PLACE	Yoke		
Inside of yoke			



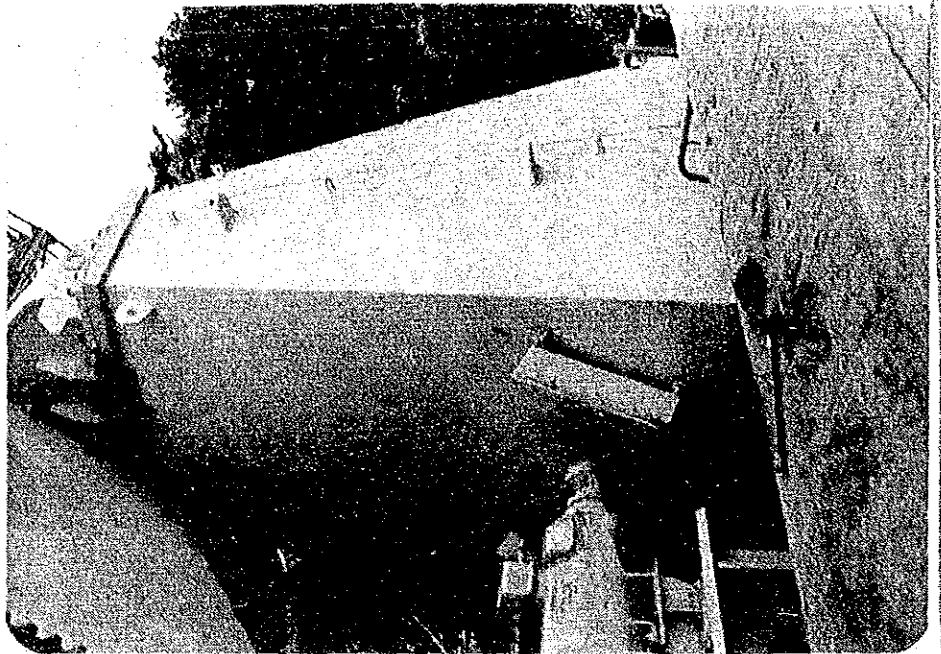
FILM NO.		MEGA NO.	4
DATE		DATA	1.9.3
PLACE	Yoke		
Dye penetrant test at weld zone of inside of yoke			



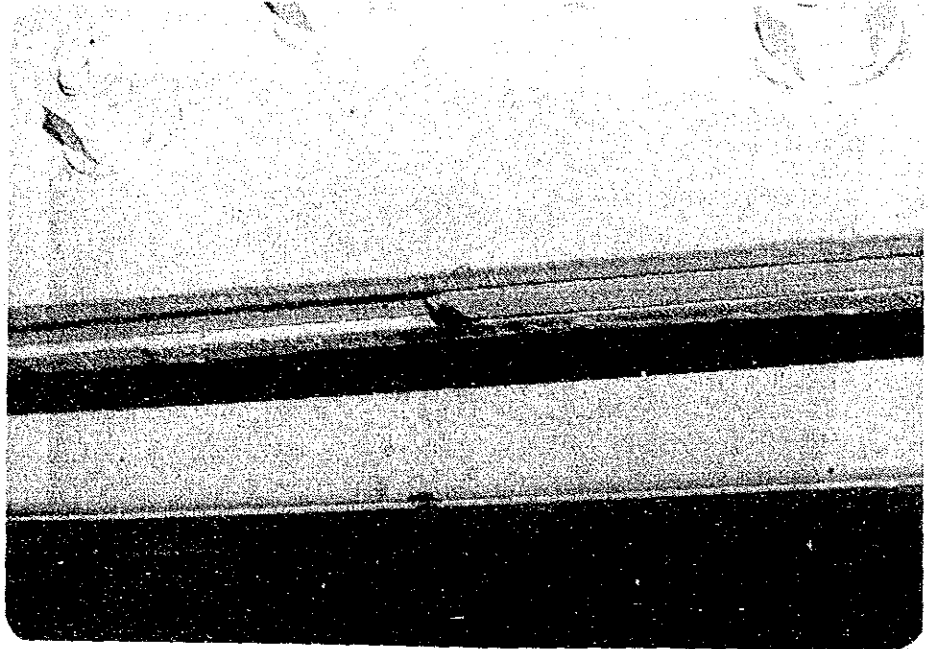
FILM NO.		MEGA NO.	13
DATE		DATA	1.9.4
PLACE	Yoke		
Connection area of inside of yoke			



FILM NO.		MEGA NO.	
DATE	22	DATA	1.9.5
PLACE	Yoke		
Outside of Yoke			



FILM NO.		MEGA NO.	9
DATE		DATA	1.9.6
PLACE	Yoke		
Connection area of inside of yoke			



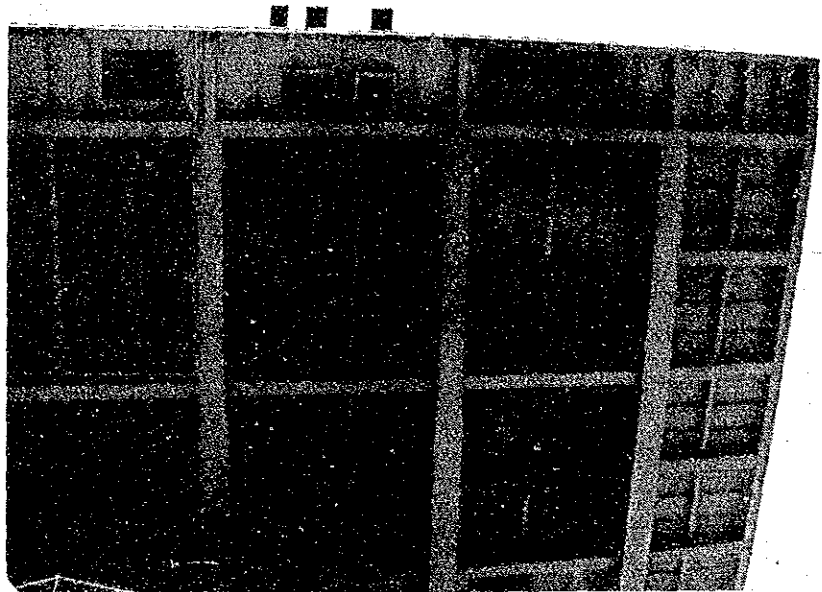
FILM NO.		MEGA NO.	31
DATE		DATA	1.9.7
PLACE	Yoke		
Connection area with AZ Bearing			



FILM NO.		MEGA NO.	13
DATE		DATA	1.9.8
PLACE	Yoke		
Cover of AZ bearing			



FILM NO.		MEGA NO.	26
DATE		DATA	1.10.1
PLACE	HPA Room		
Bottom surface of floor			

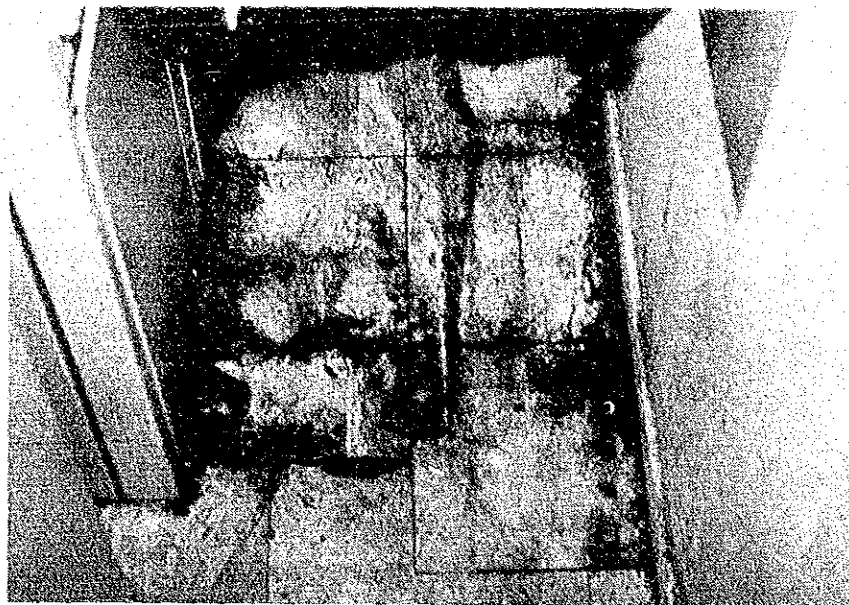


FILM NO.		MEGA NO.	25
DATE		DATA	1.10.2
PLACE	HPA Room		
Bottom surface of floor			



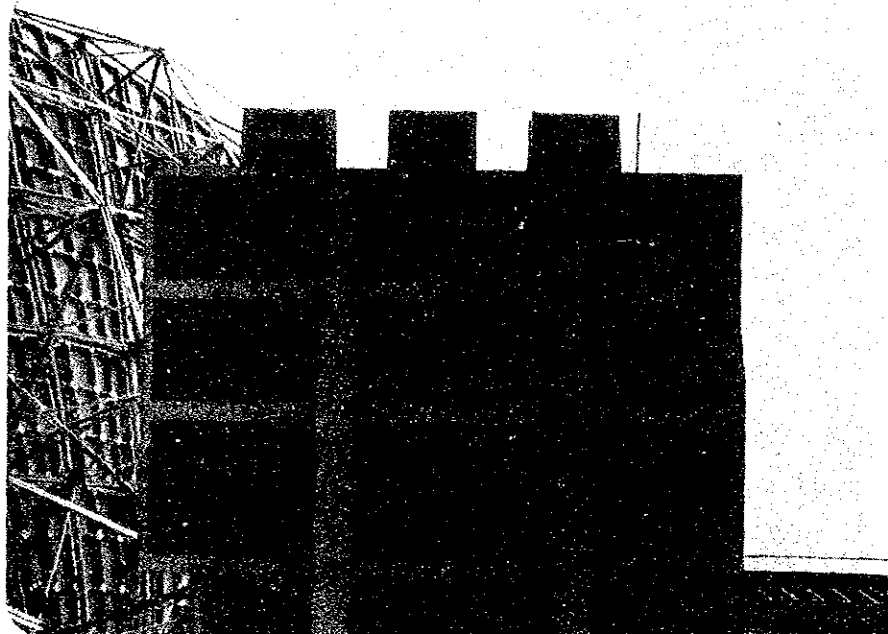
FILM NO.		MEGA NO.	20
DATE		DATA	1.10.3
PLACE	HPA Room		

Inside of floor



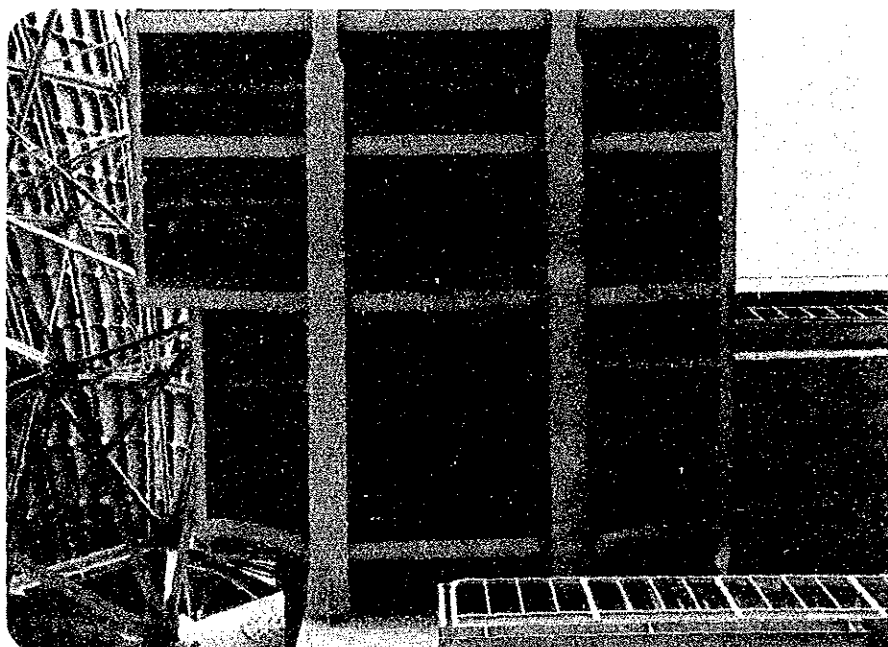
FILM NO.		MEGA NO.	19
DATE		DATA	1.11.1
PLACE	Feed Room		

Bottom surface of floor

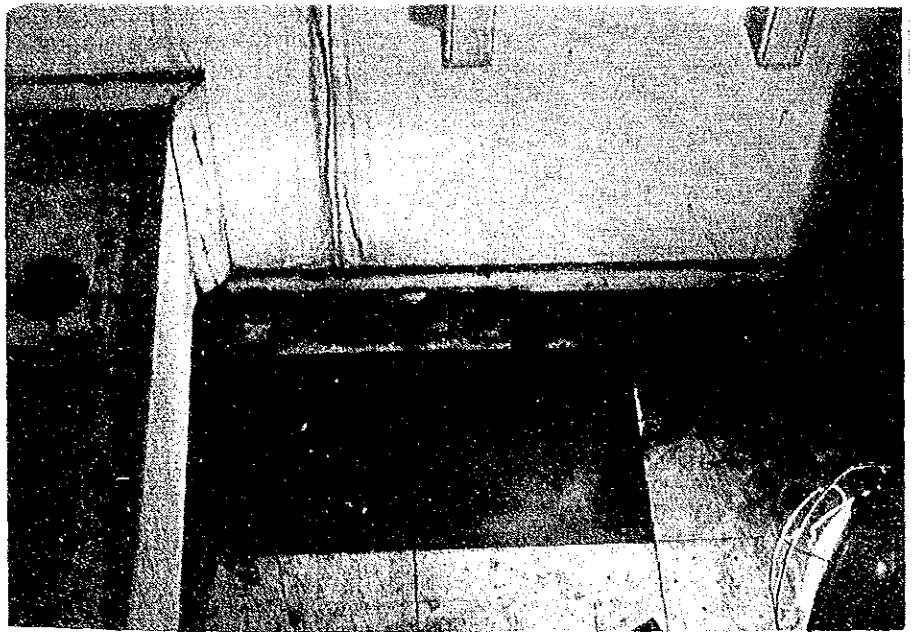


FILM NO.		MEGA NO.	20
DATE		DATA	1.11.2
PLACE	Feed Room		

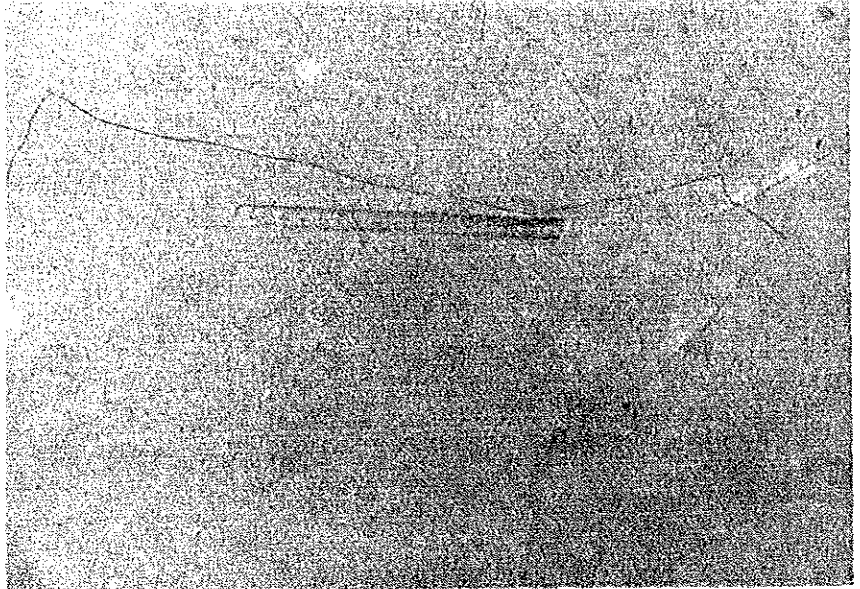
Bottom surface of floor



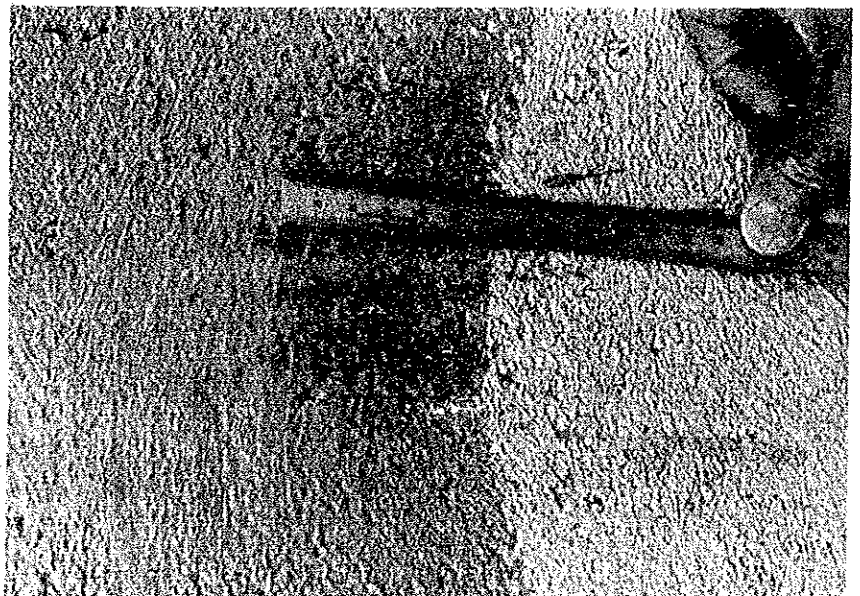
FILM NO.		NEGA NO.	6
DATE		DATA	1.11.3
PLACE	Feed Room		
Top surface of floor			



FILM NO.		NEGA NO.	25
DATE		DATA	1.12.1
PLACE	Concrete Tower		
Hair crack on floor			



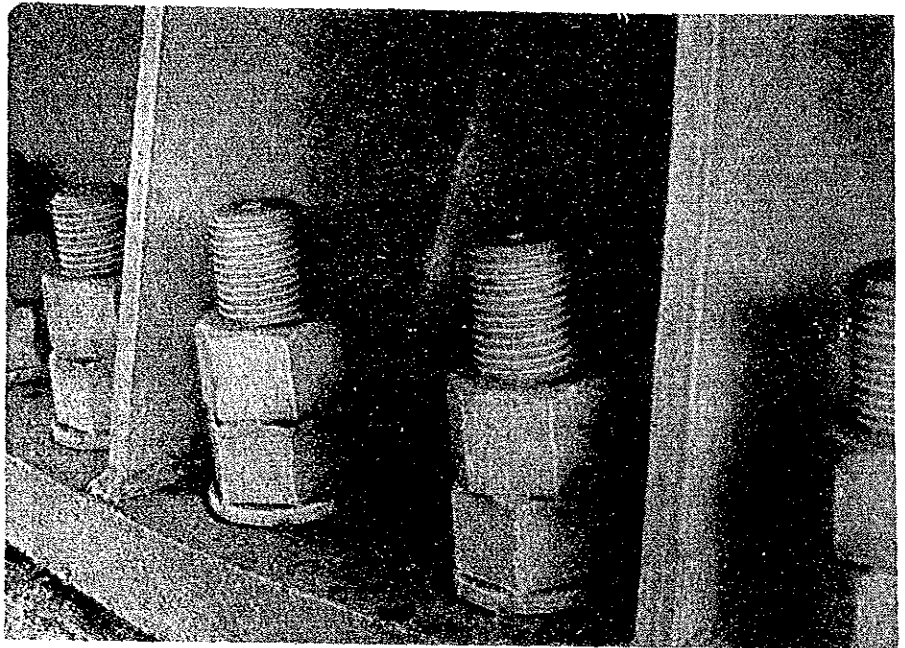
FILM NO.		NEGA NO.	4
DATE		DATA	1.12.2
PLACE	Concrete Tower		
Hair crack on wall			



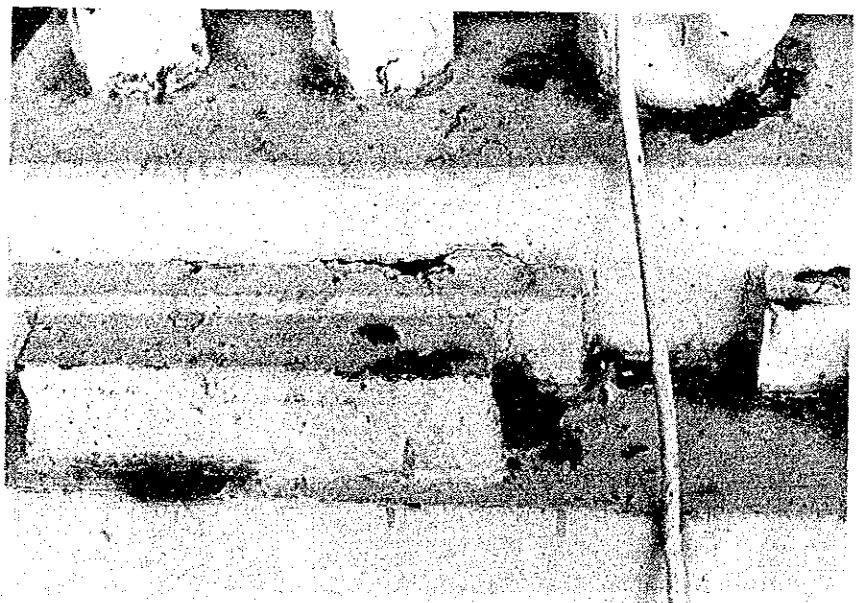
FILM NO.		MEGA NO.	11
DATE		DATA	1.12.3
PLACE	Concrete Tower		
Top of concrete tower			



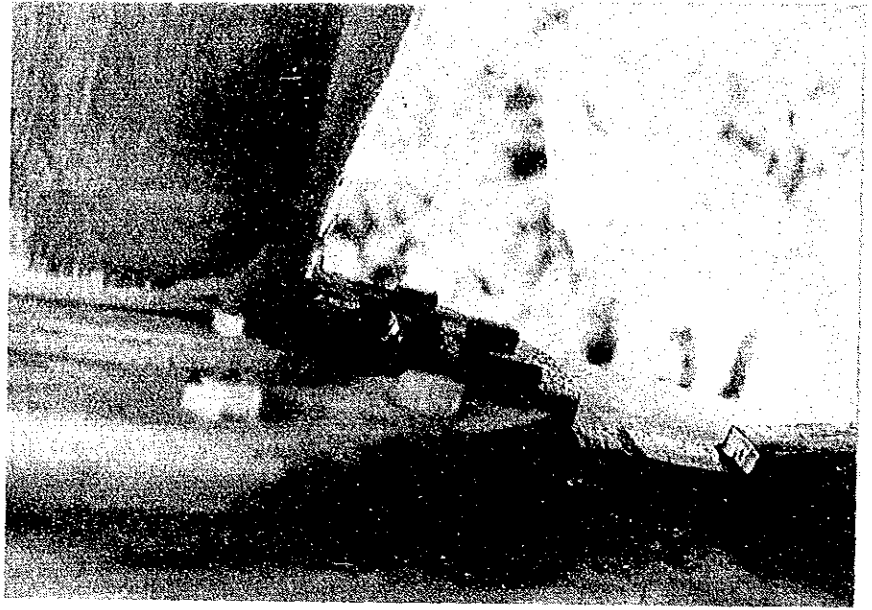
FILM NO.		MEGA NO.	15
DATE		DATA	1.12.4
PLACE	AZ Bearing base		



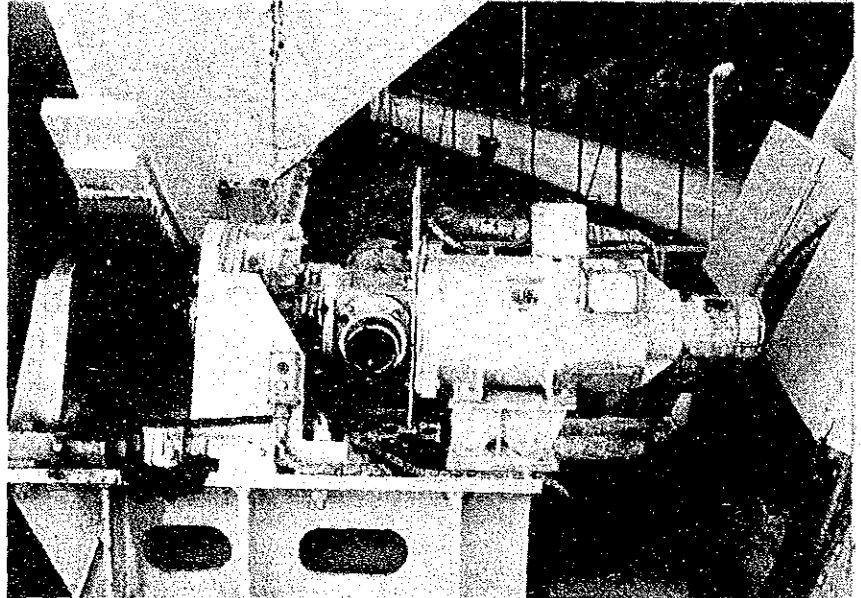
FILM NO.		MEGA NO.	29
DATE		DATA	1.13.1
PLACE	EL Bearing & Plummer Block		
Plummer Block			



FILM NO.		NEGA NO.	30
DATE		DATA	1.13.2
PLACE	EL Bearing		
Oil leakage from oil seal			



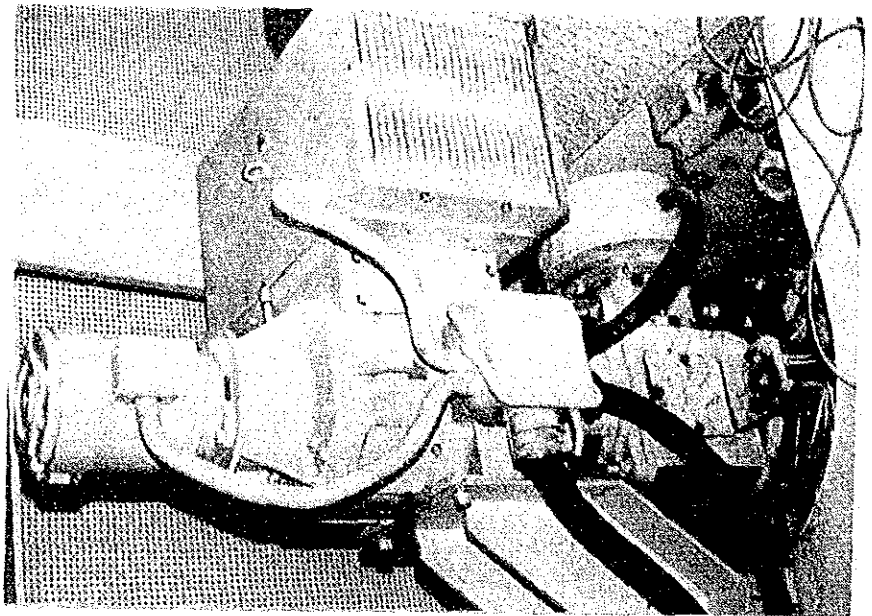
FILM NO.		NEGA NO.	17
DATE		DATA	1.15.1
PLACE	EL Speed Reducer		



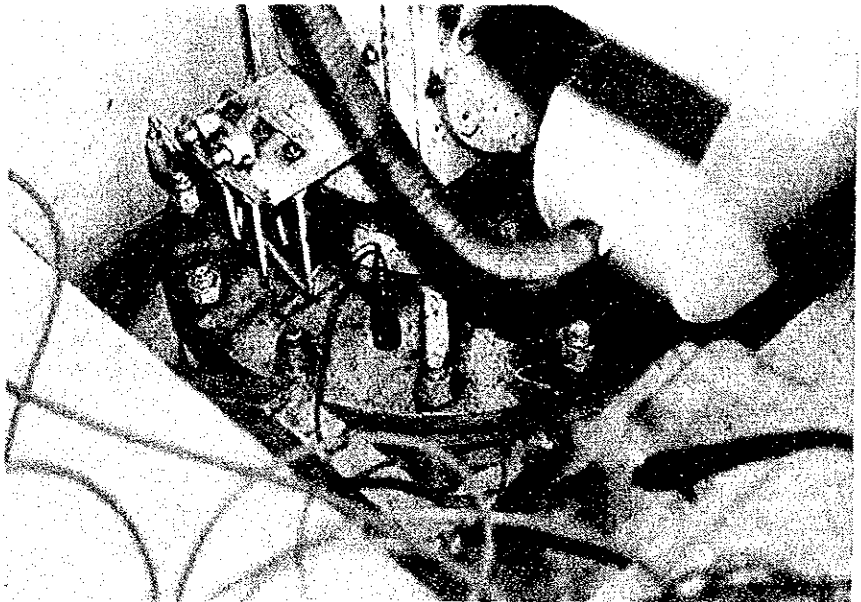
FILM NO.		NEGA NO.	15
DATE		DATA	1.15.2
PLACE	EL Speed Reducer		
Distortion of cover			



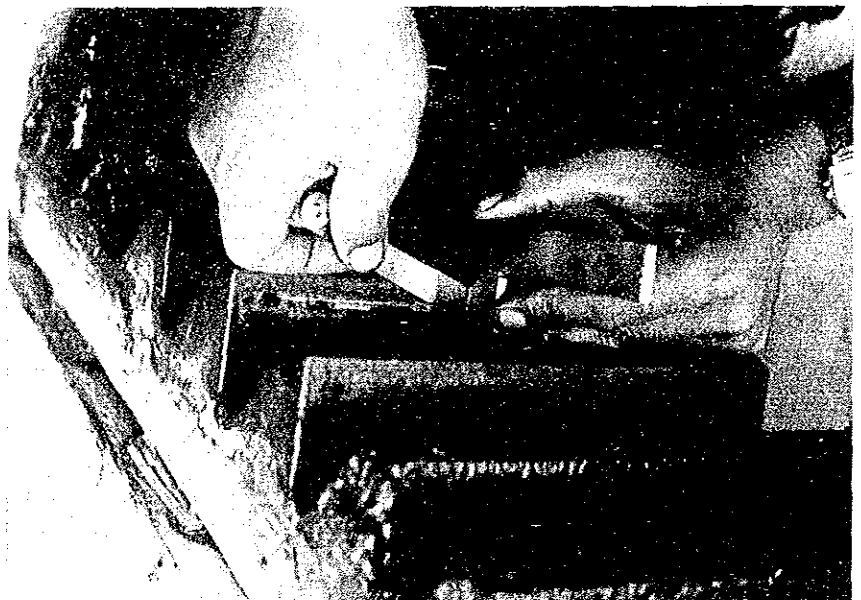
FILM NO.		MEGA NO.	4
DATE		DATA	1.16.1
PLACE	AZ Speed Reducer		



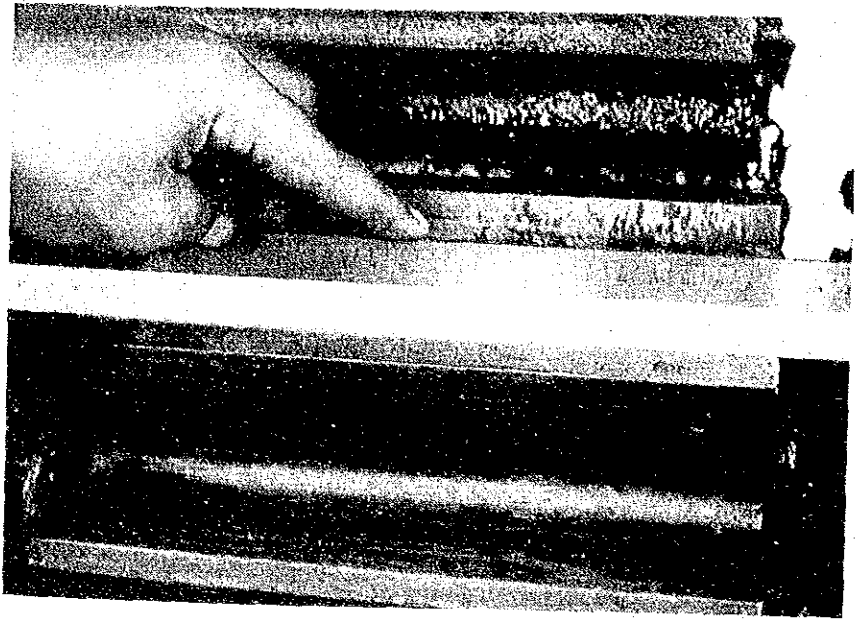
FILM NO.		MEGA NO.	5
DATE		DATA	1.16.2
PLACE	AZ Speed Reducer		



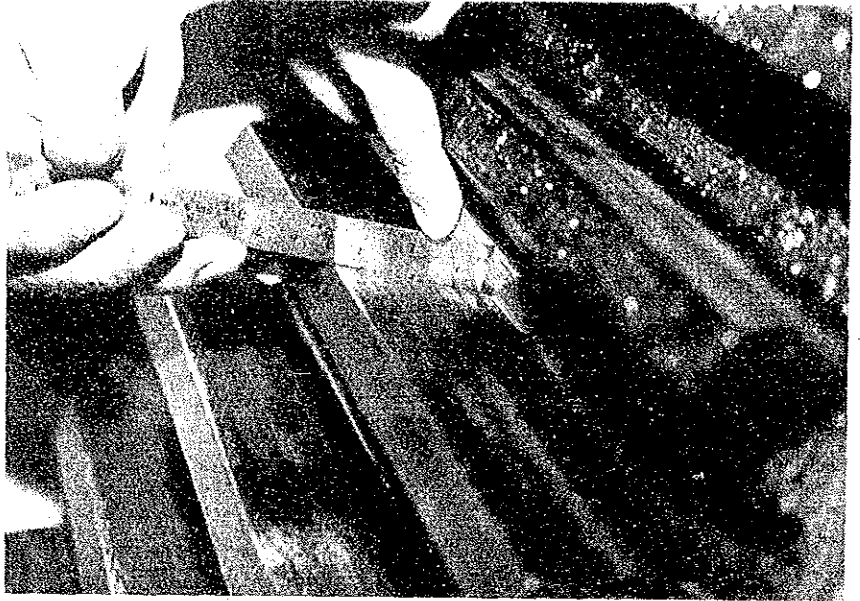
FILM NO.		MEGA NO.	4
DATE		DATA	1.17.1
PLACE	EL Bullgear		



FILM NO.		MEGA NO.	3
DATE		DATA	1.17.2
PLACE	Pinion for EL Bullgear		



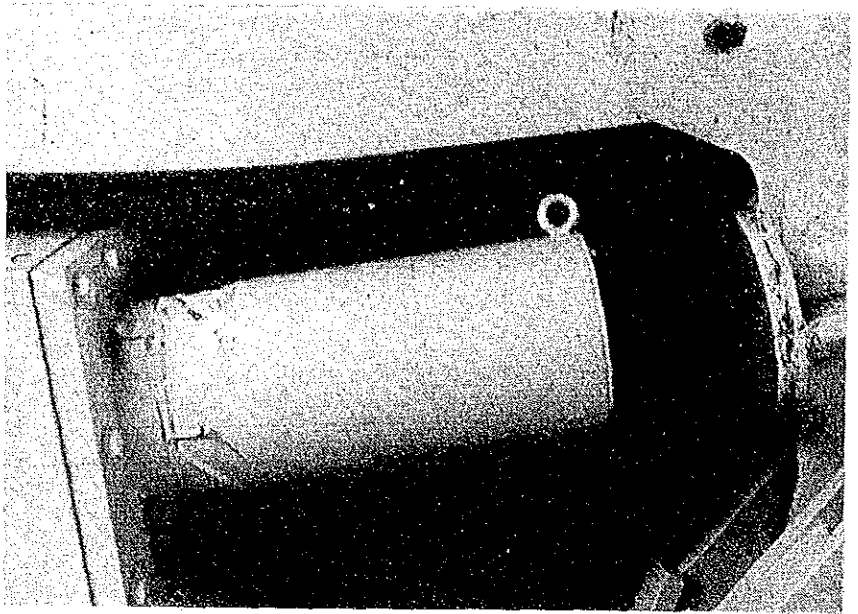
FILM NO.		MEGA NO.	26
DATE		DATA	1.18.1
PLACE	AZ gear		



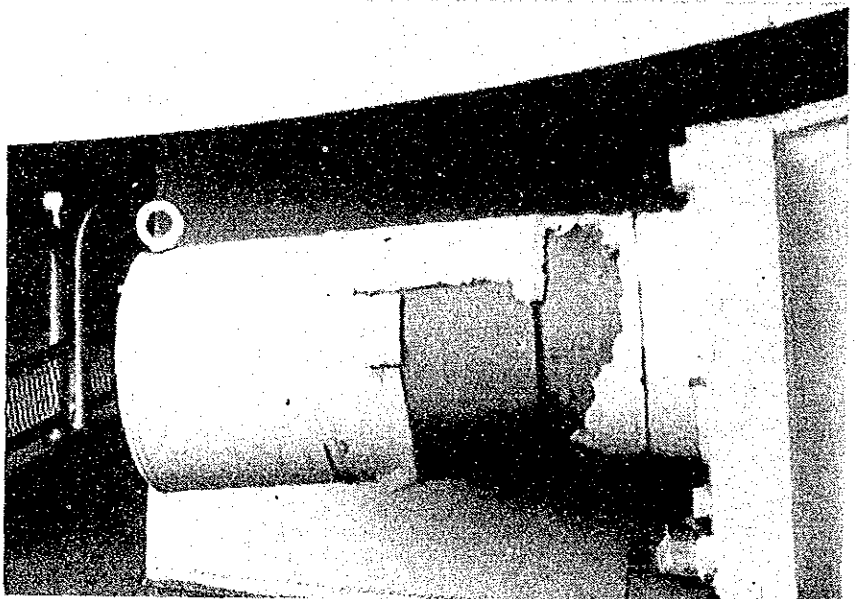
FILM NO.		MEGA NO.	33
DATE		DATA	1.18.2
PLACE	Pinion for AZ gear		



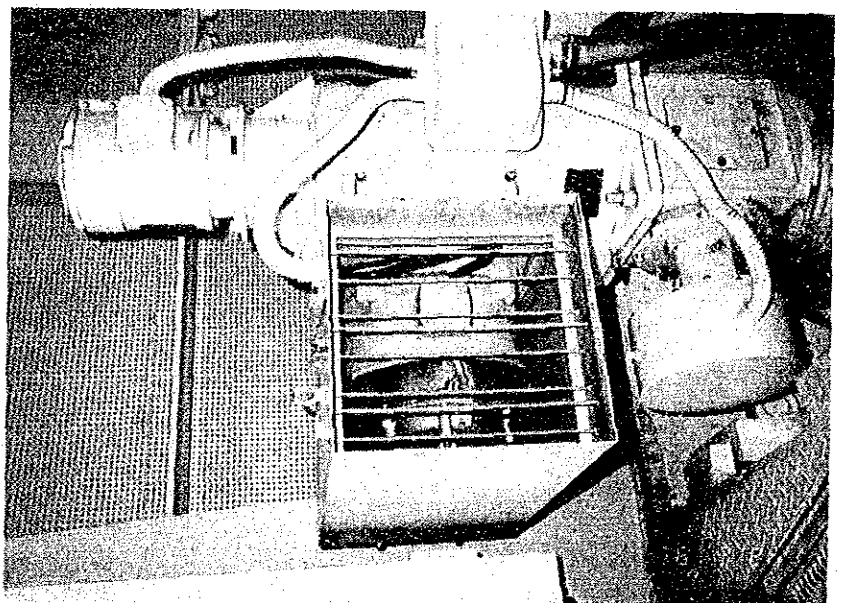
FILM NO.		MEGA NO.	7
DATE		DATA	1.21.1
PLACE	Buffer		



FILM NO.		MEGA NO.	6
DATE		DATA	1.21.2
PLACE	Buffer		

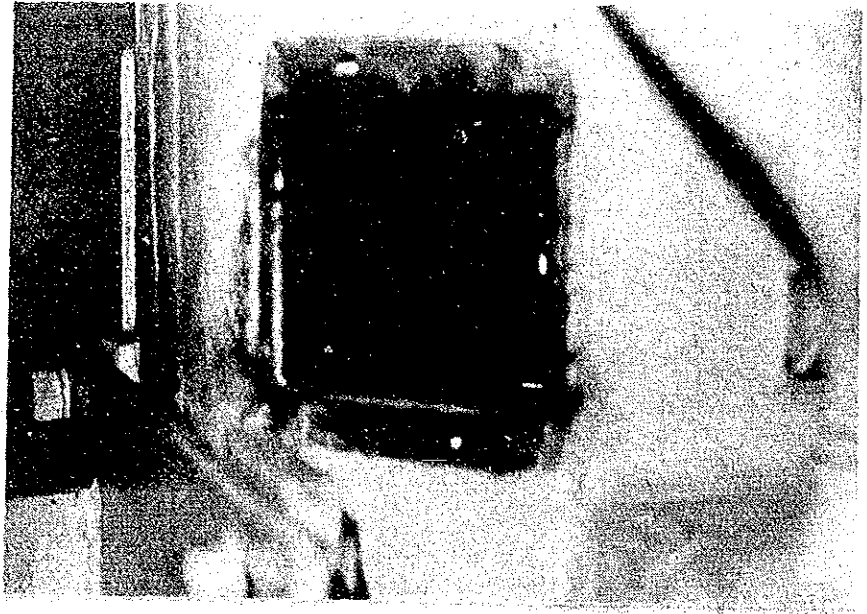


FILM NO.	M	3	MEGA NO.	1
DATE			DATA	2.1.1
PLACE				
AZ Drive Motor				

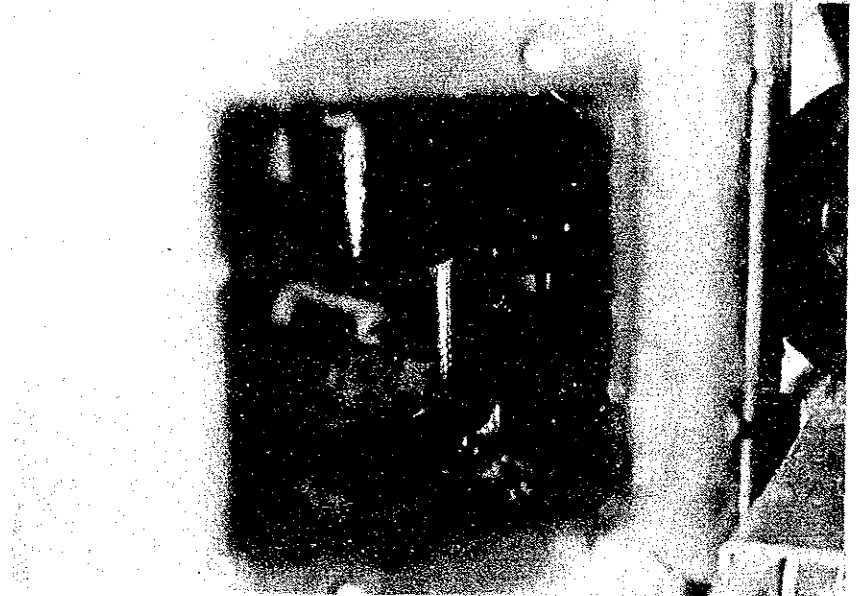


2. Drive and Servo System

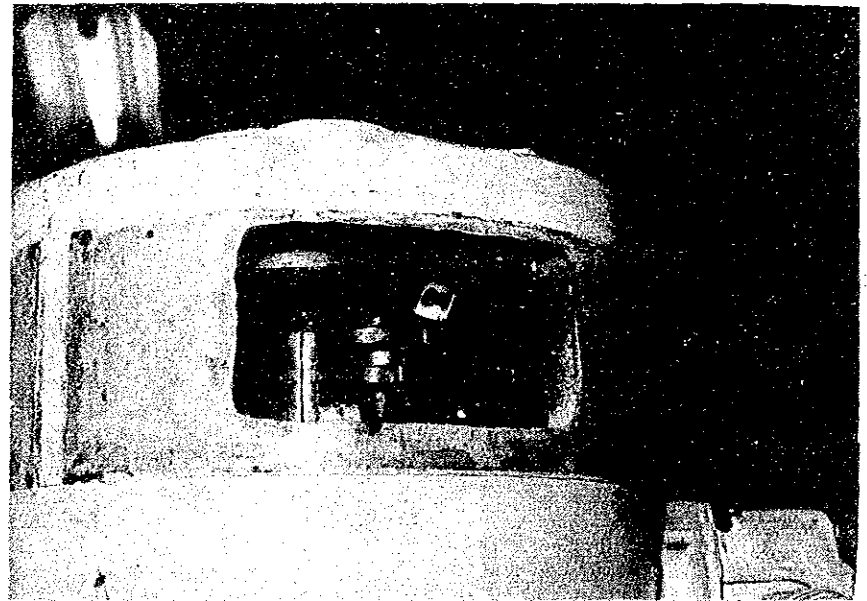
FILM NO.	Y	3	MEGA NO.	20
DATE			DATA	2.1.2
PLACE				
<p>Commutator surface AZ No. 1 Motor</p>				



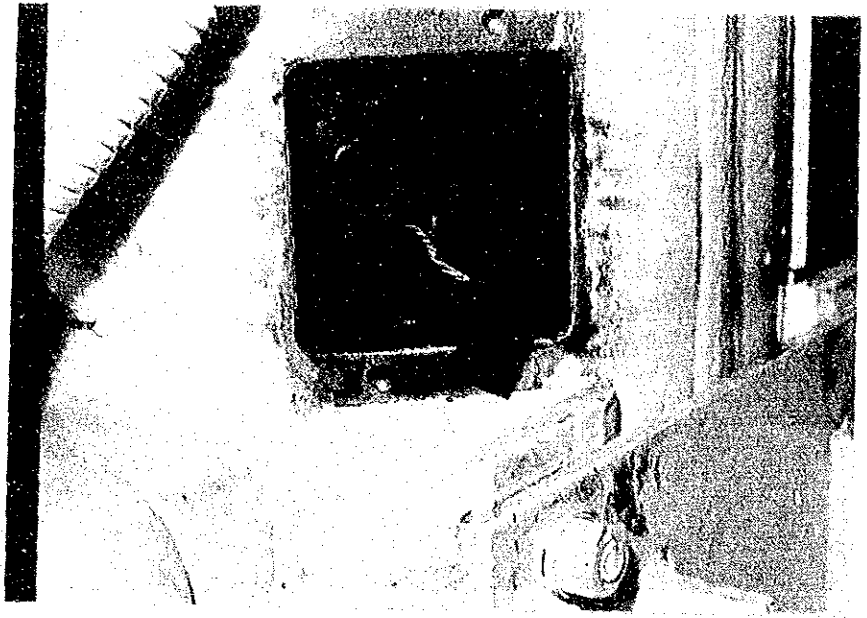
FILM NO.	Y	2	MEGA NO.	10
DATE			DATA	2.1.3
PLACE				
<p>AZ No. 4 Motor</p>				



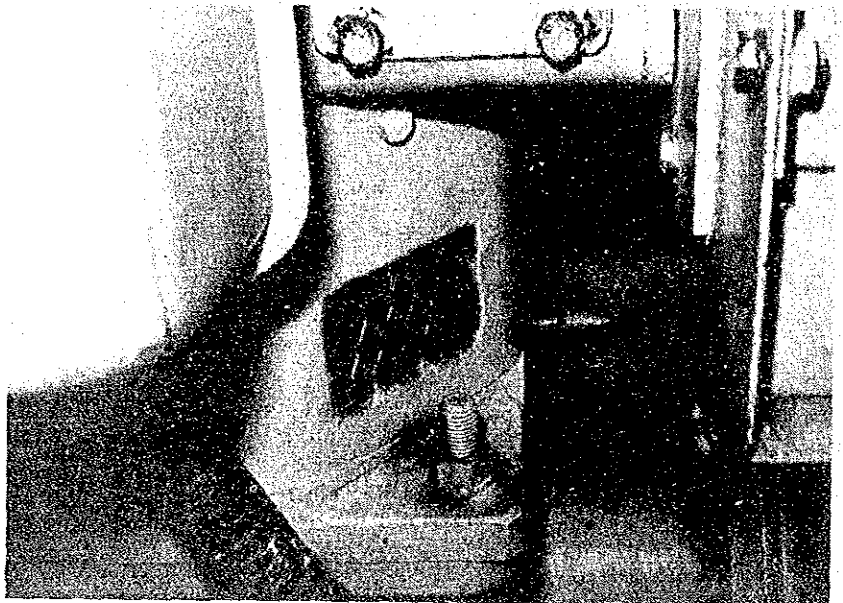
FILM NO.	Y	4	MEGA NO.	5
DATE			DATA	2.1.4
PLACE				
<p>TG Brush for AZ No. 4 Motor</p>				



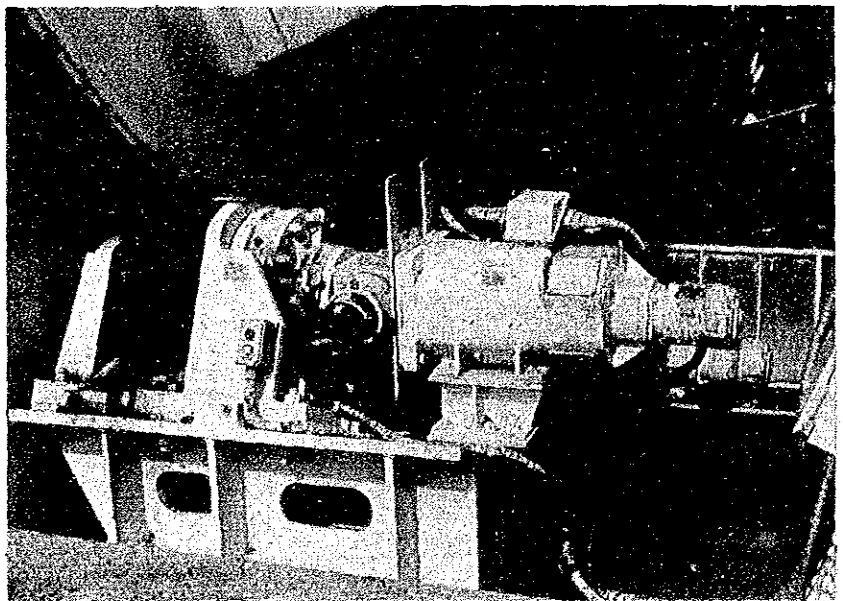
FILM NO.	Y	3	NEGA NO.	34
DATE			DATA	2.1.5
PLACE				
<p>TG Brush for AZ No. 3 Motor</p>				



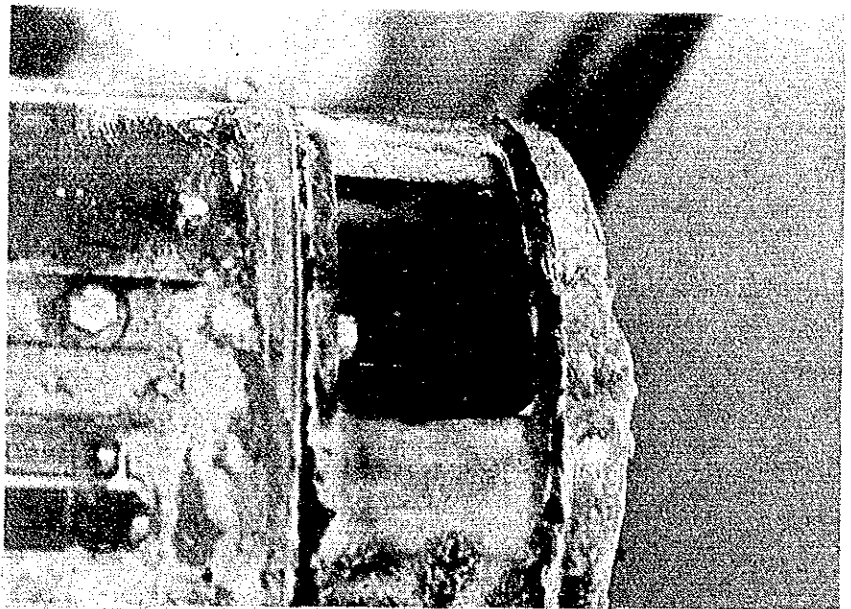
FILM NO.	Y	2	NEGA NO.	30
DATE			DATA	2.1.6
PLACE				
<p>Lower Part of AZ Motor</p>				



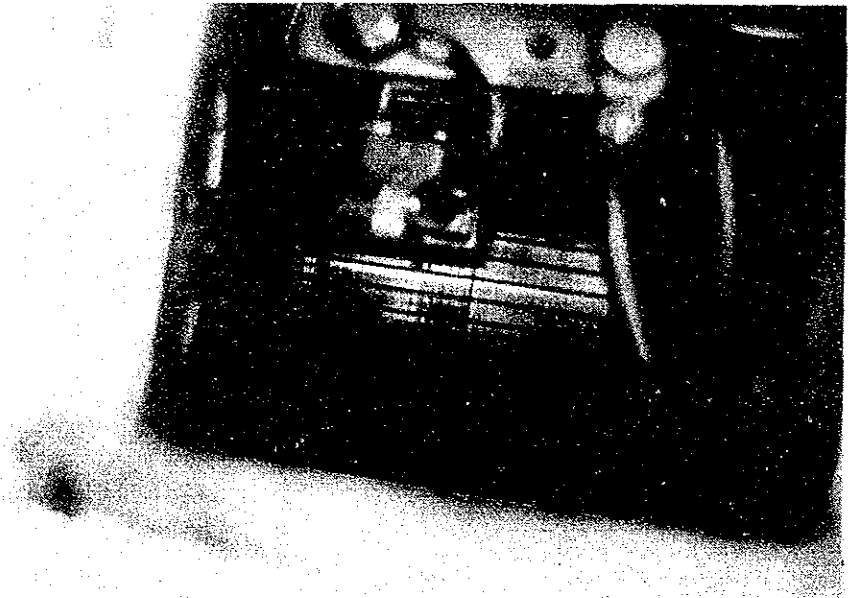
FILM NO.	Y	2	NEGA NO.	31
DATE			DATA	2.2.1
PLACE				
<p>EL Drive Motors</p>				



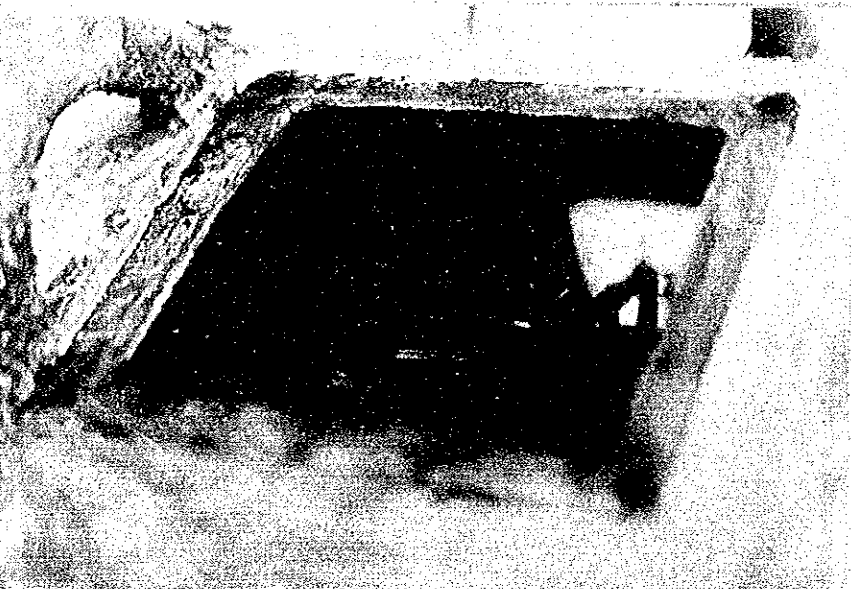
FILM NO.	Y	3	MEGA NO.	26
DATE			DATA	2.2.2
PLACE				
<p>TG Frush for EL Drive Motor</p>				



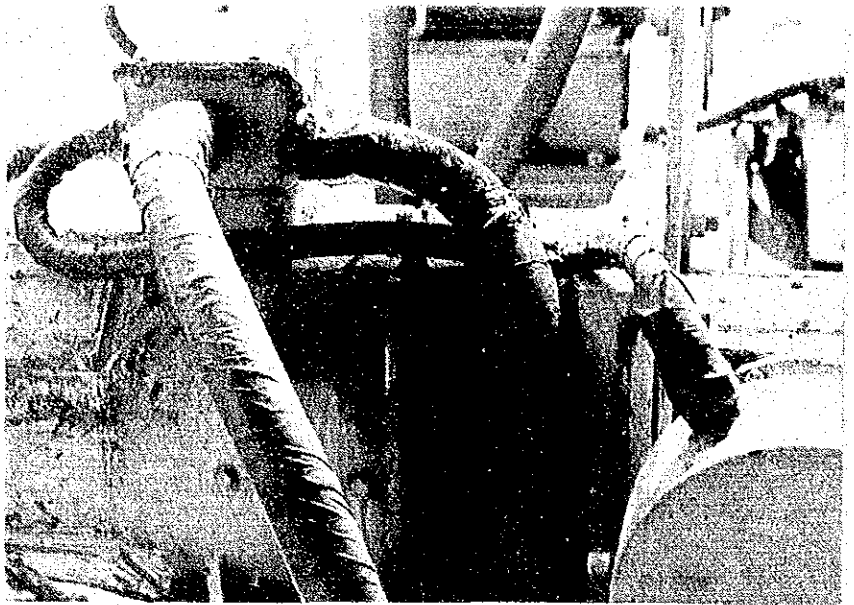
FILM NO.	Y	3	MEGA NO.	29
DATE			DATA	2.2.3
PLACE				
<p>Commutator Surface of EL No. 2 Motor</p>				



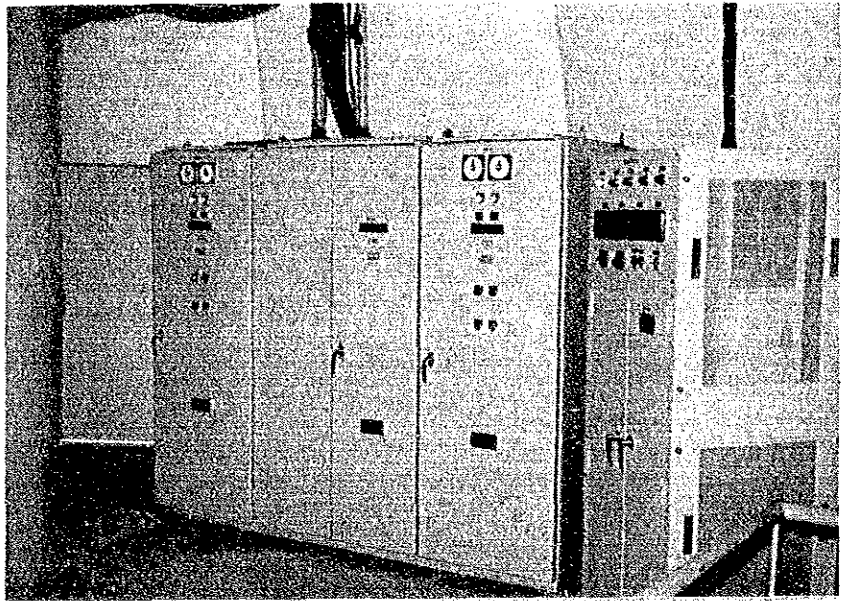
FILM NO.	Y	3	MEGA NO.	30
DATE			DATA	2.2.4
PLACE				
<p>EL Motor Carbon Brush</p>				



FILM NO.	Y	2	MEGA NO.	37
DATE			DATA	2.2.5
PLACE				
<p>EL No. 2 Motor (rust from Prica tube)</p>				



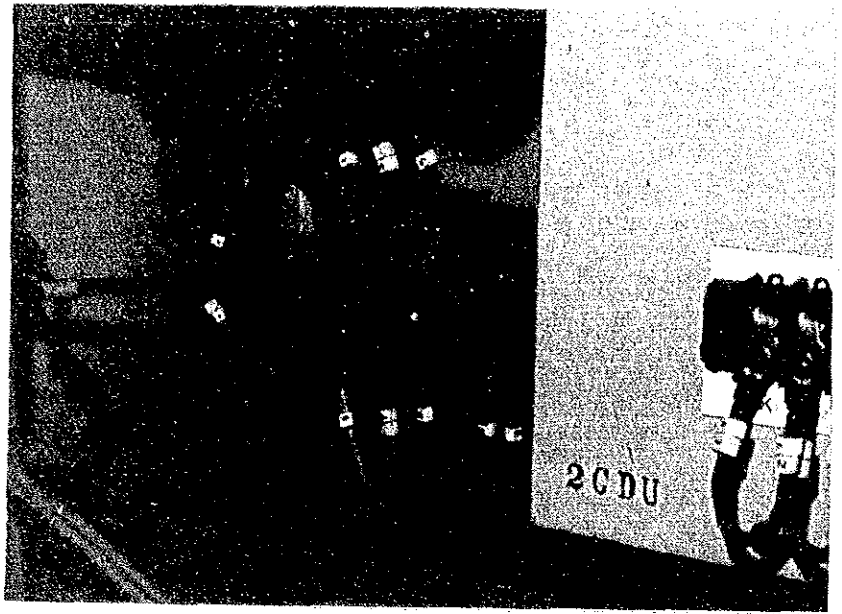
FILM NO.	M	2	MEGA NO.	24
DATE			DATA	2.3.1
PLACE				
<p>DCPA (EL panel)</p>				



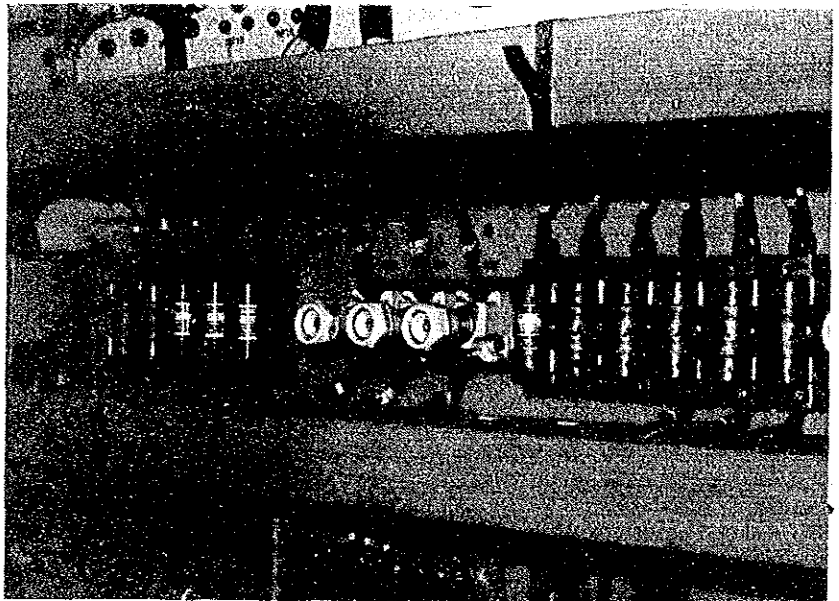
FILM NO.	Y	1	MEGA NO.	37
DATE			DATA	2.3.2
PLACE				
<p>Inside view of DCPA</p>				



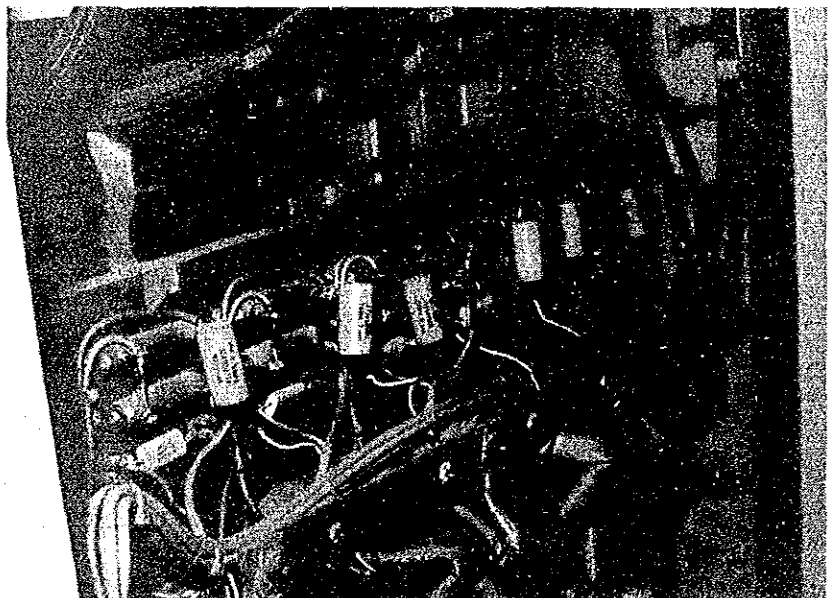
FILM NO.	Y	2	MEGA NO.	3
DATE			DATA	2.3.3
PLACE				
<p>Thermal Relay 2 OL of AZ DCPA</p>				



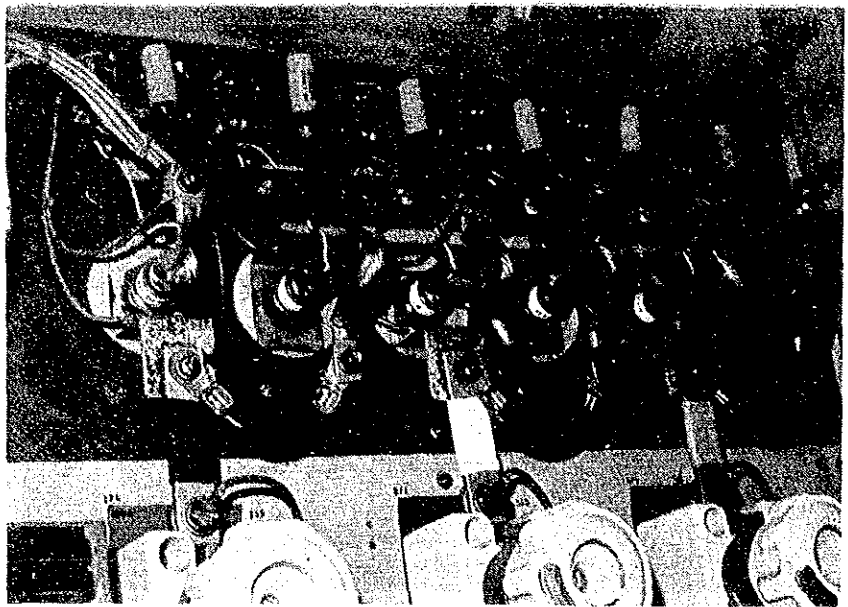
FILM NO.	Y	2	MEGA NO.	5
DATE			DATA	2.3.4
PLACE				
<p>Fuses on the DCPA Rear part</p>				



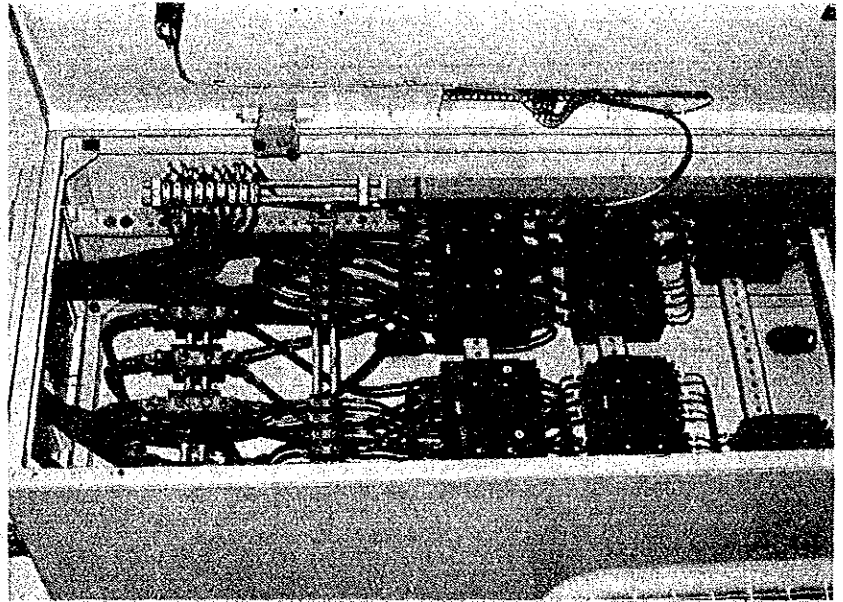
FILM NO.	Y	2	MEGA NO.	1
DATE			DATA	2.3.5
PLACE				
<p>AZ 3/4 DCPA Rear Part</p>				



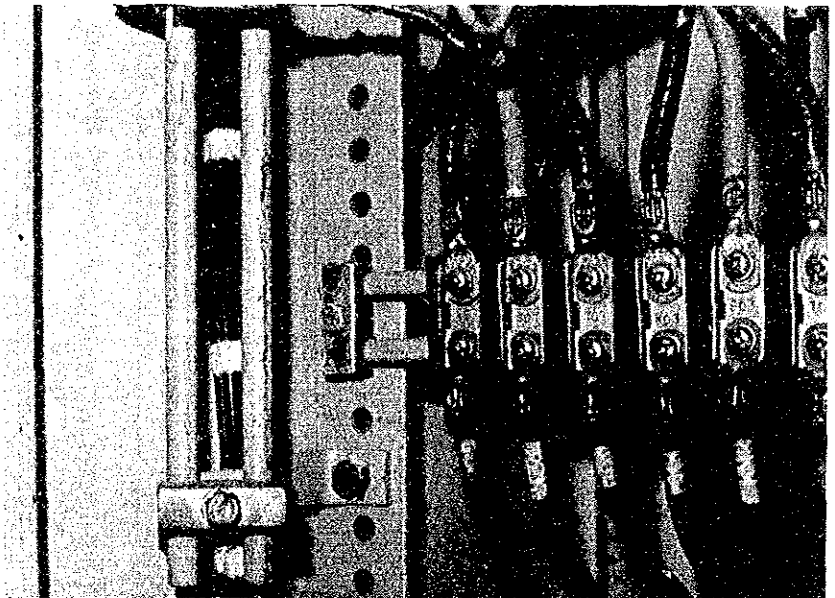
FILM NO.	Y	2	MEGA NO.	7
DATE			DATA	2.3.6
PLACE				
Thyristors of AZ No. 1/2 DCPA				



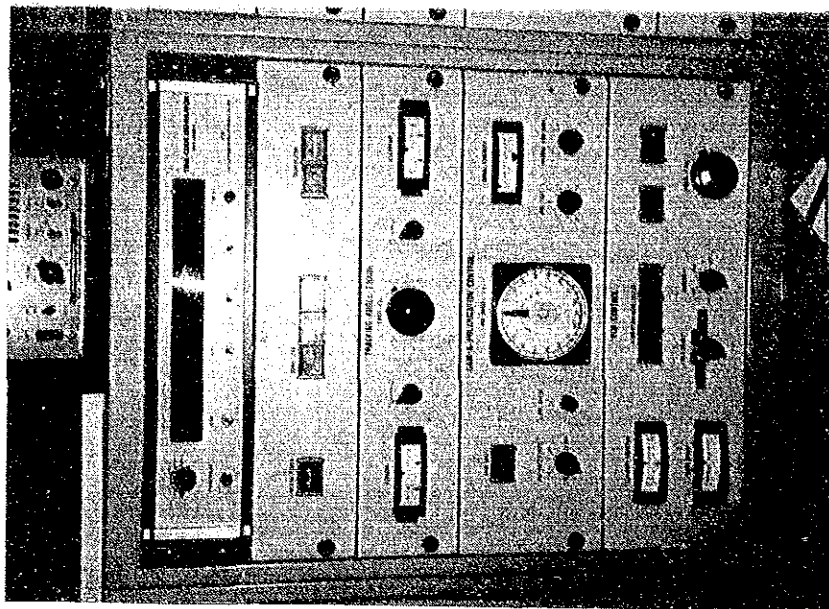
FILM NO.	Y	2	MEGA NO.	8
DATE			DATA	2.4.1
PLACE				
Feeder Panel				



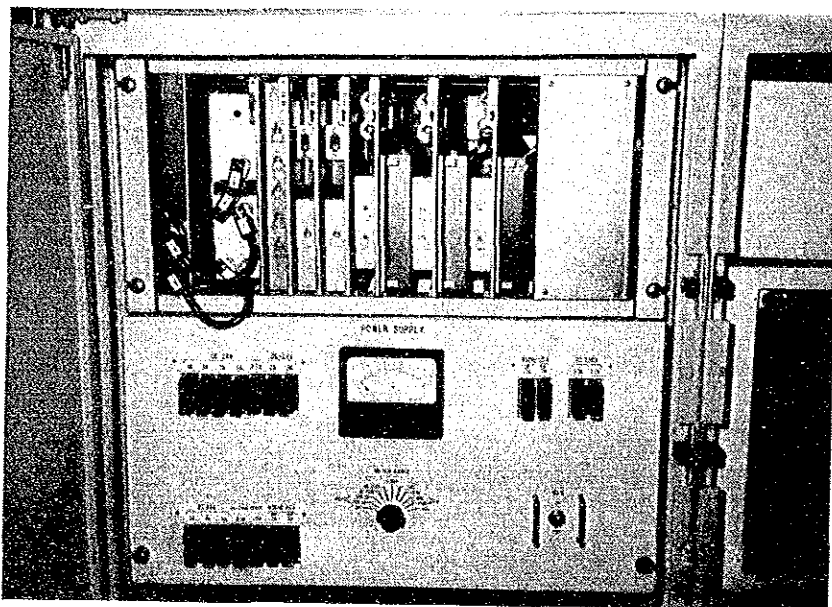
FILM NO.	Y	2	MEGA NO.	10
DATE			DATA	2.4.2
PLACE				
Terminals of Feeder Panel				



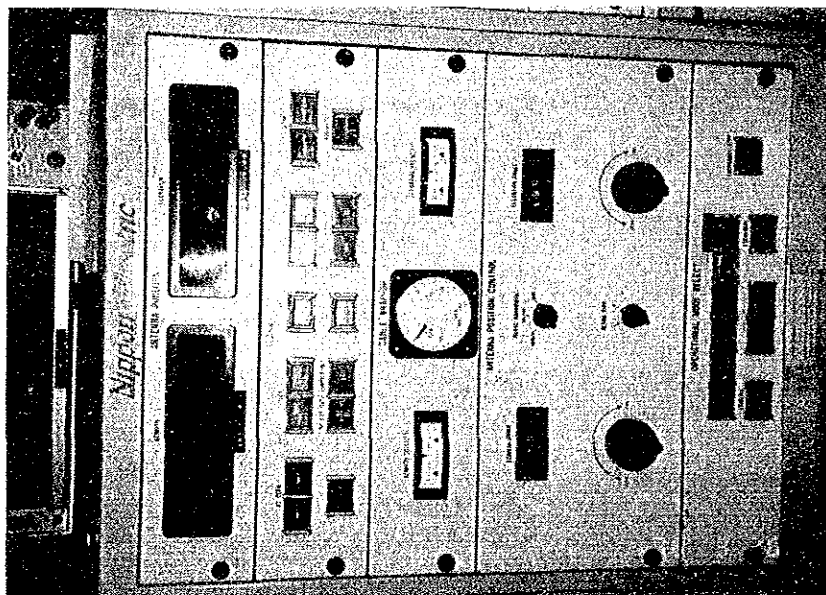
FILM NO.	M	1	MEGA NO.	23
DATE			DATA	2.5.1
PLACE				
Ant. Cont. Console				



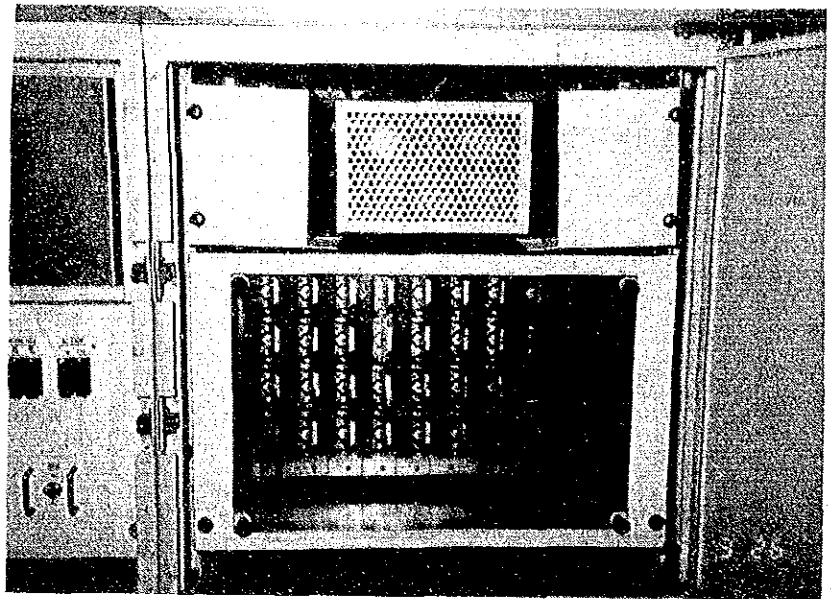
FILM NO.	M	1	MEGA NO.	25
DATE			DATA	2.5.2
PLACE				
Ant. Cont. Console				



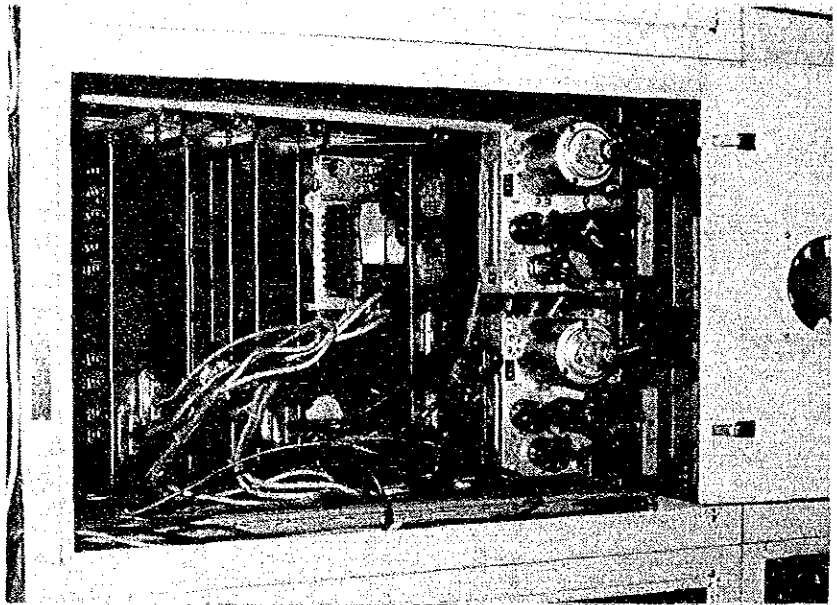
FILM NO.	M	1	MEGA NO.	22
DATE			DATA	2.5.3
PLACE				
Ant. cont. Console				



FILM NO.	M	1	MEGA NO.	26
DATE			DATA	2.5.4
PLACE				
Ant. Cont. Console				



FILM NO.	Y	4	MEGA NO.	18
DATE			DATA	2.5.5
PLACE				
Rear View of Ant. Cont. Console				



FILM NO.	Y	4	MEGA NO.	21
DATE			DATA	2.5.6
PLACE				
Rear view of Ant. Cont. Console				

