

STUDY REPORT
ON
PLANT RENOVATION PROJECT OF
THE SENTOSA-1 EARTH STATION
IN
THE REPUBLIC OF SINGAPORE

Vol. 2

(PHOTOGRAPHS)

JULY 1986

JAPAN INTERNATIONAL COOPERATION AGENCY (JICA)

SDS

86-82

JICA LIBRARY



1030619[9]

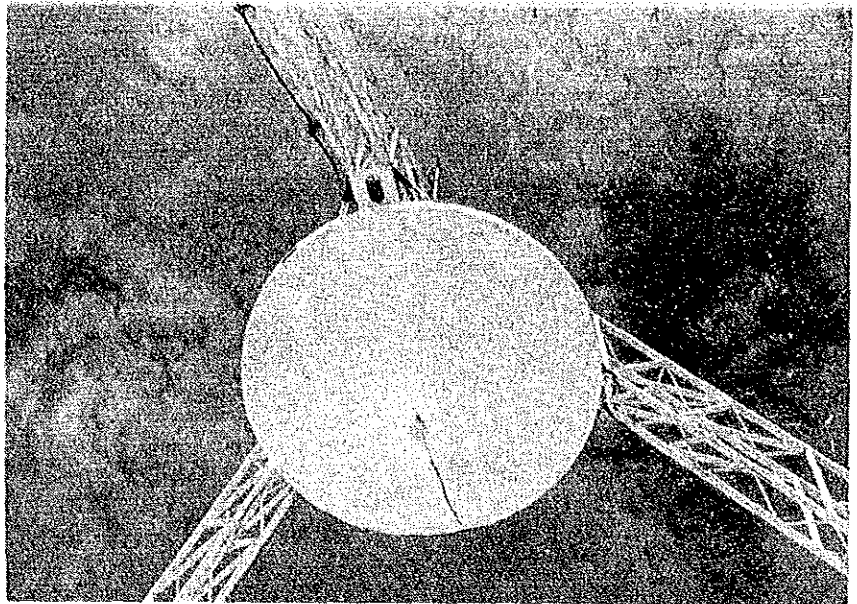
国際協力事業団			
受入 月日	86. 9. 24	119	
		64.7	
登録No.	15430	SDS	

CONTENTS

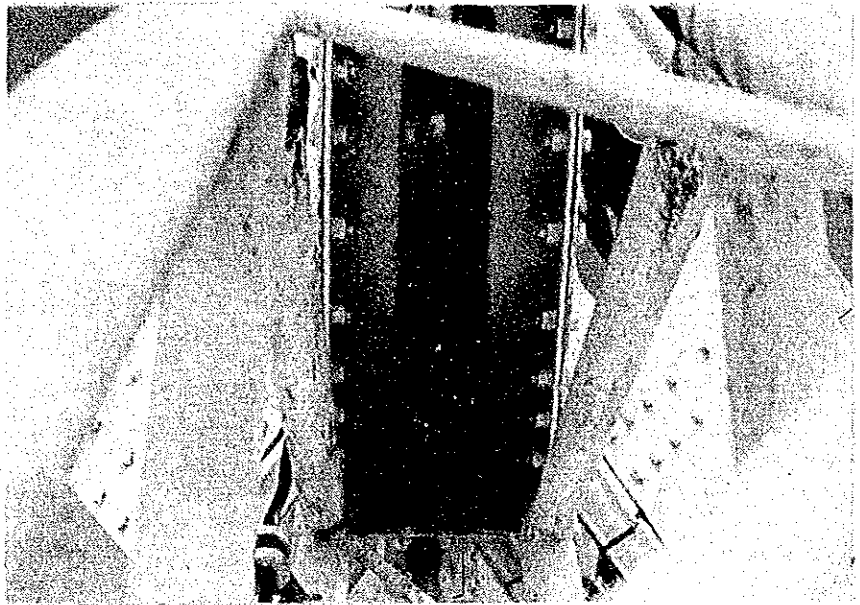
	Page
1. Antenna Structure	P1 ~P22
2. Drive and Servo System	P23~P43

1. Antenna Structure

FILM NO.		MEGA NO.	15
DATE		DATA	1.1.1
PLACE	Subreflector		



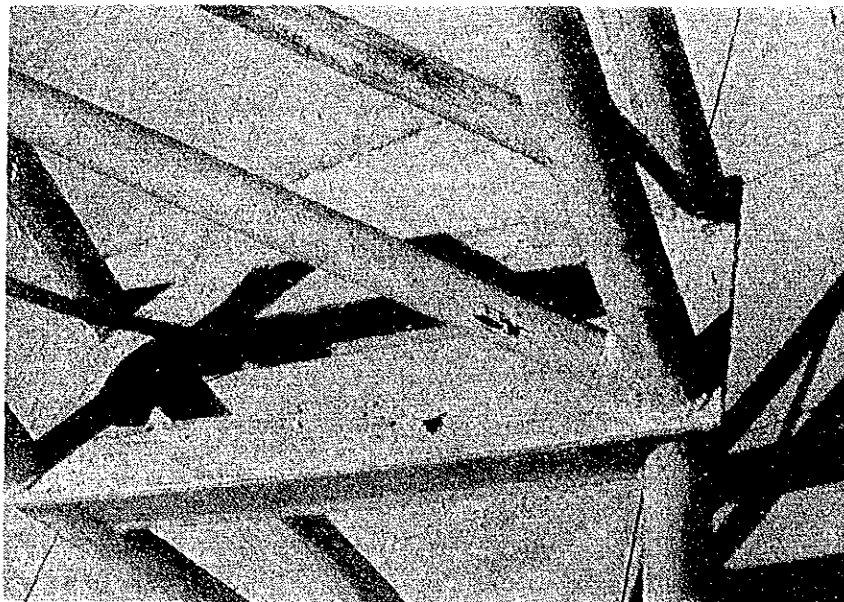
FILM NO.		MEGA NO.	11
DATE		DATA	1.2.1
PLACE	Tripod		
<p>Corrosion and rust at connection area</p>			



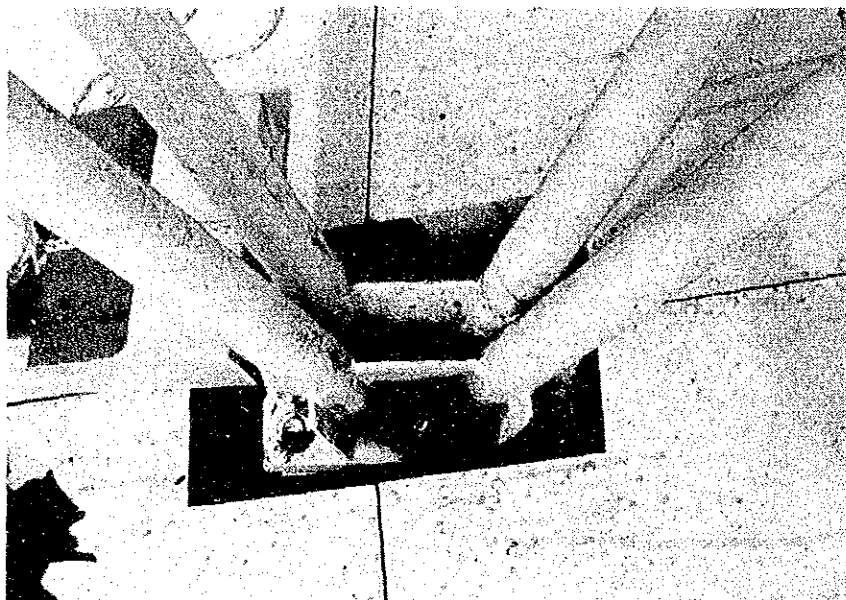
FILM NO.		MEGA NO.	9
DATE		DATA	1.2.2
PLACE	Tripod		
<p>Corrosion and rust at connection area</p>			



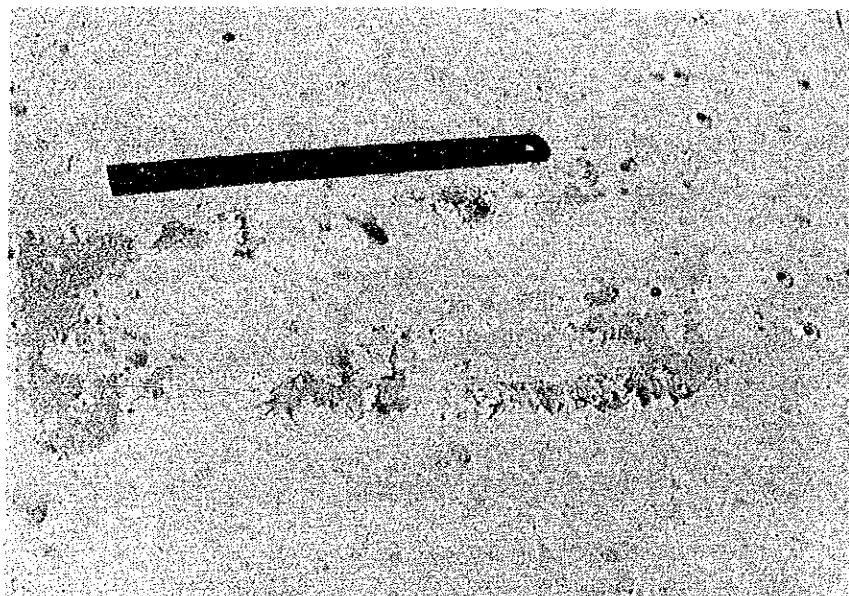
FILM NO.		MEGA NO.	18
DATE		DATA	1.2.3
PLACE	Tripod		
Members			



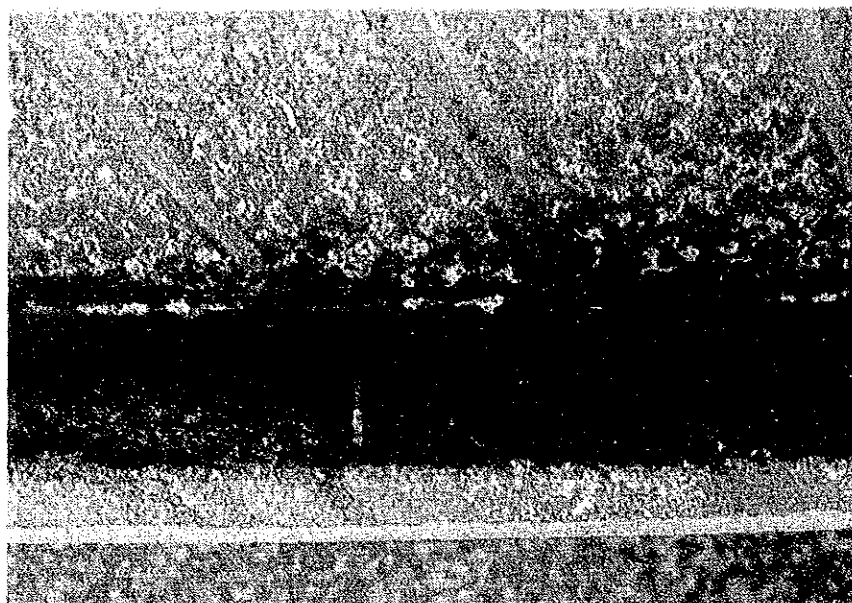
FILM NO.		MEGA NO.	32
DATE		DATA	1.2.4
PLACE	Tripod		
Connection area			



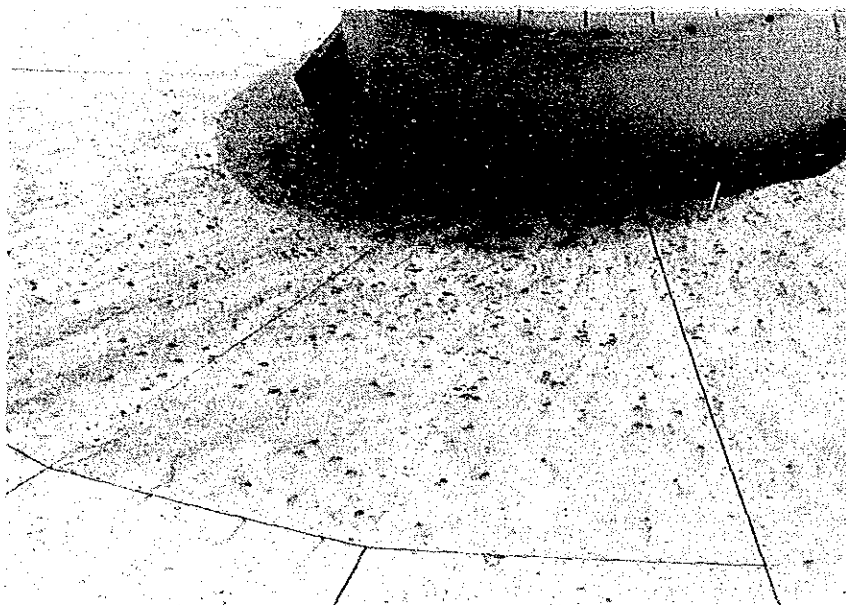
FILM NO.		MEGA NO.	2
DATE		DATA	1.3.1
PLACE	Panel (Front face)		
Paint peeling off			



FILM NO.		MEGA NO.	25
DATE		DATA	1.3.2
PLACE	Panel (Rear face)		
Rust on aluminum surface			



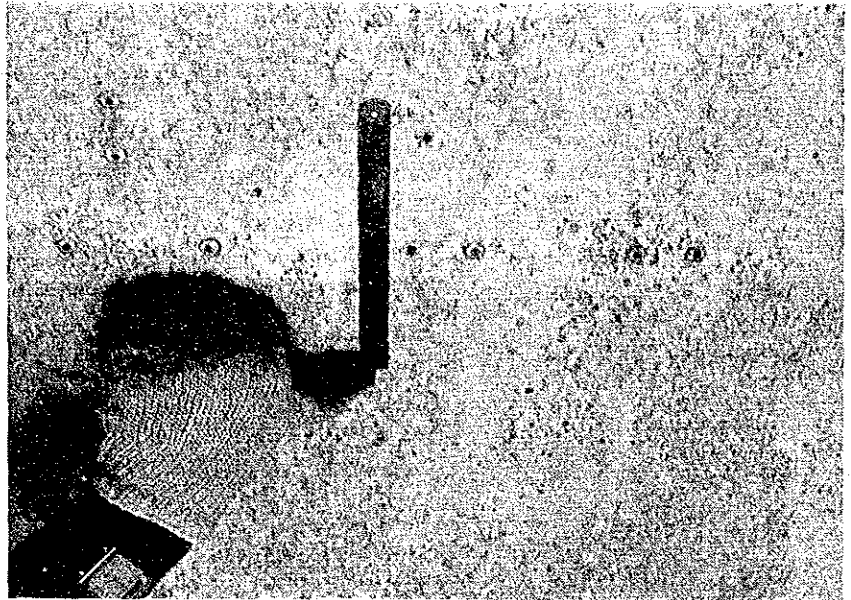
FILM NO.		MEGA NO.	5
DATE		DATA	1.3.3
PLACE	Panel		
Dirty by rust from tripod			



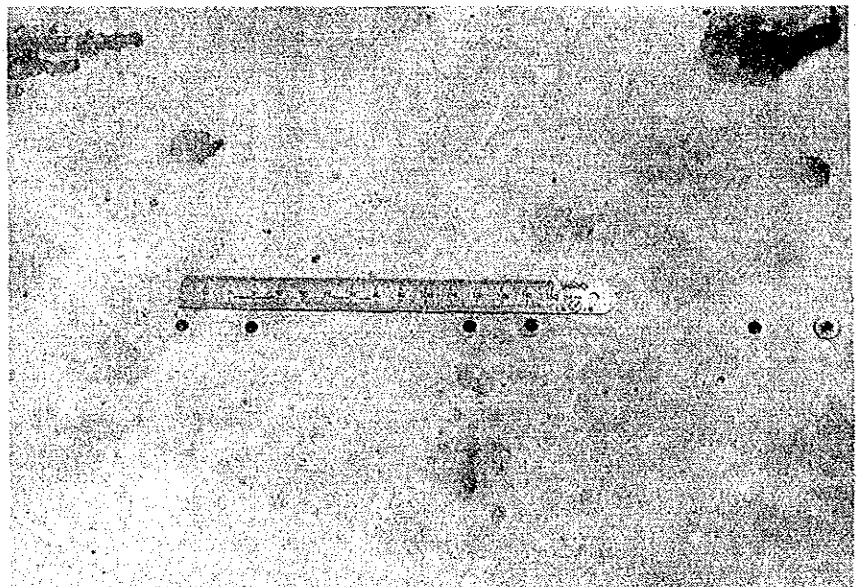
FILM NO.		MEGA NO.	27
DATE		DATA	1.3.4
PLACE	Panel		
Distorsion of panel			



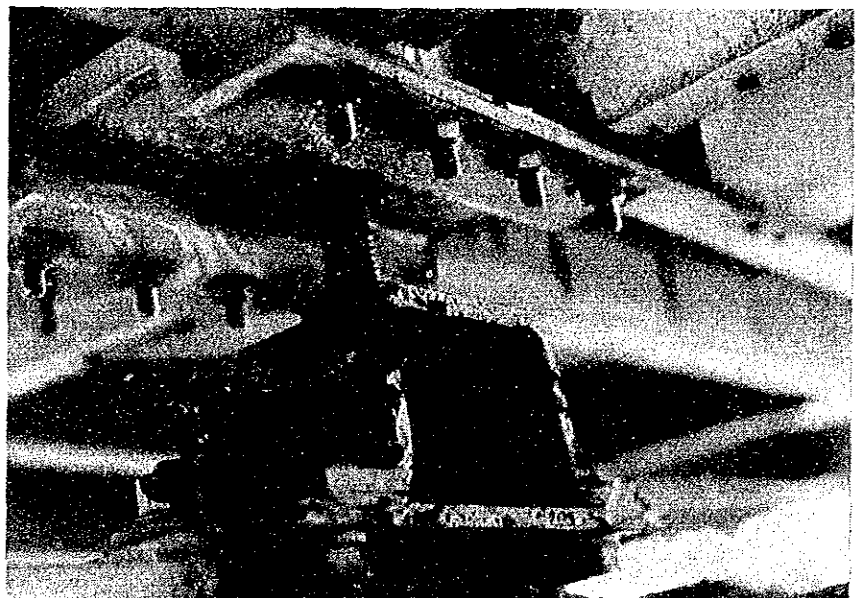
FILM NO.		MEGA NO.	29
DATE		DATA	1.3.5
PLACE	Panel		
<p>Rivet fall off and moss</p>			



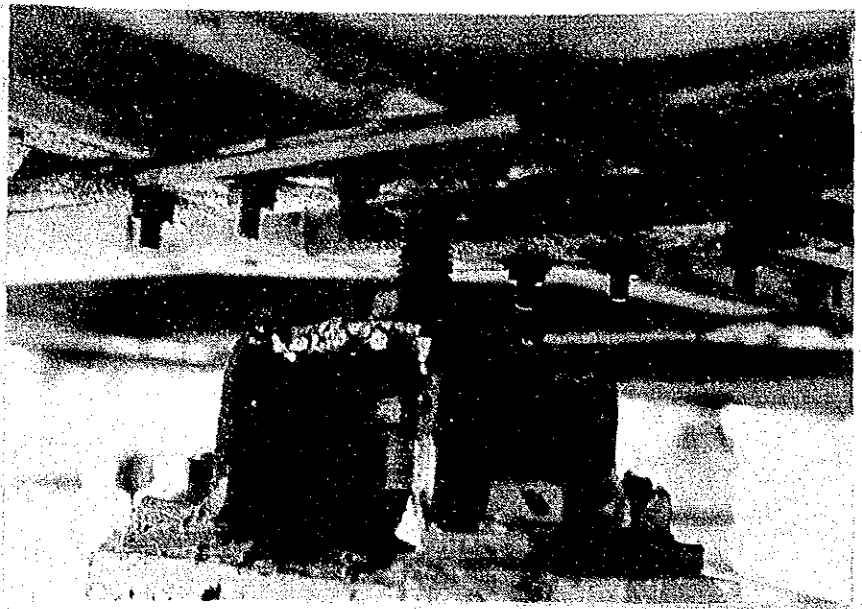
FILM NO.		MEGA NO.	28
DATE		DATA	1.3.6
PLACE	Panel		
<p>Rivet fall off</p>			



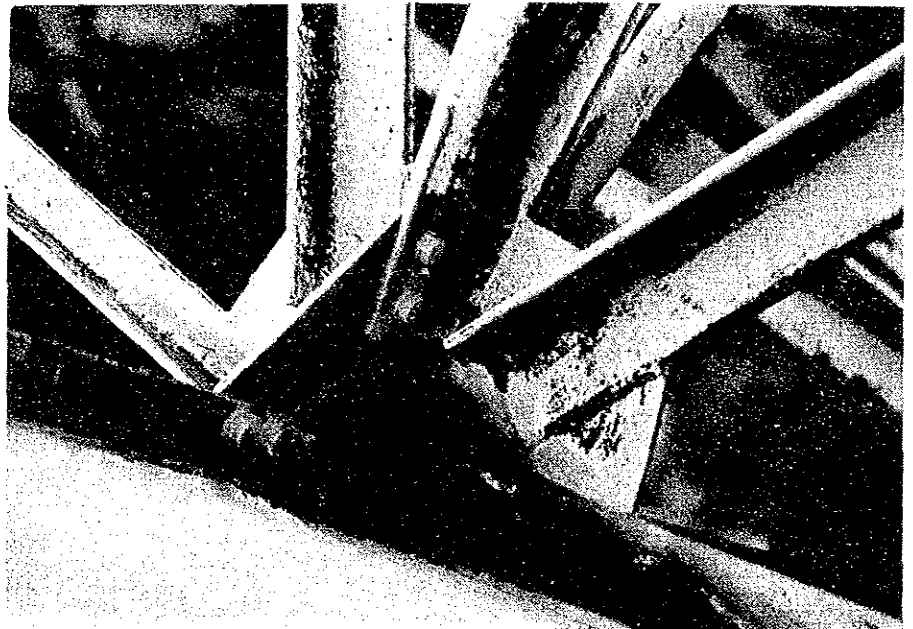
FILM NO.		MEGA NO.	18
DATE		DATA	1.4.1
PLACE	Panel Support		



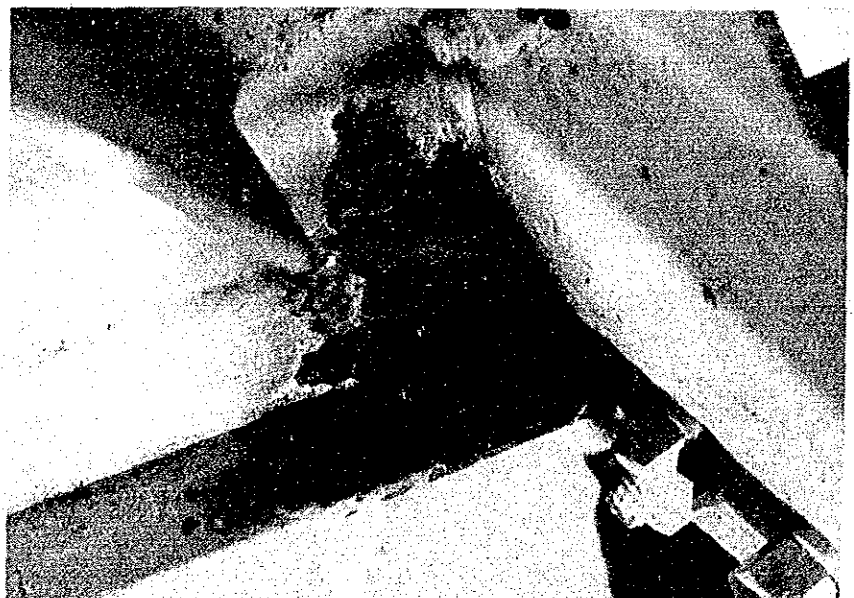
FILM NO.		MEGA NO.	21
DATE		DATA	1.4.2
PLACE	Panel Support		



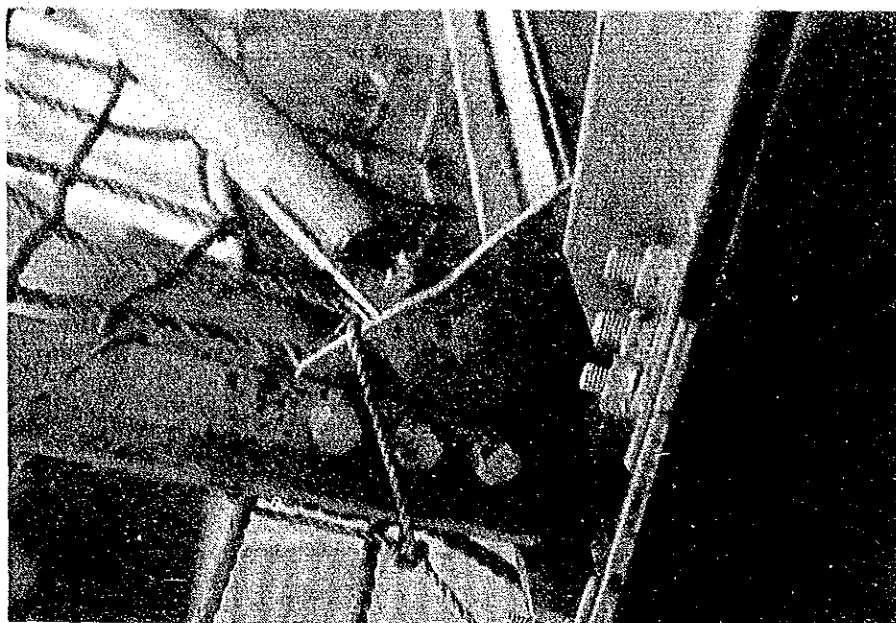
FILM NO.		MEGA NO.	12
DATE		DATA	1.5.1
PLACE	Backup Structure		
<p>Water pooling at connection area</p>			



FILM NO.		MEGA NO.	15
DATE		DATA	1.5.2
PLACE	Backup Structure		
<p>Water pooling place at connection area</p>			



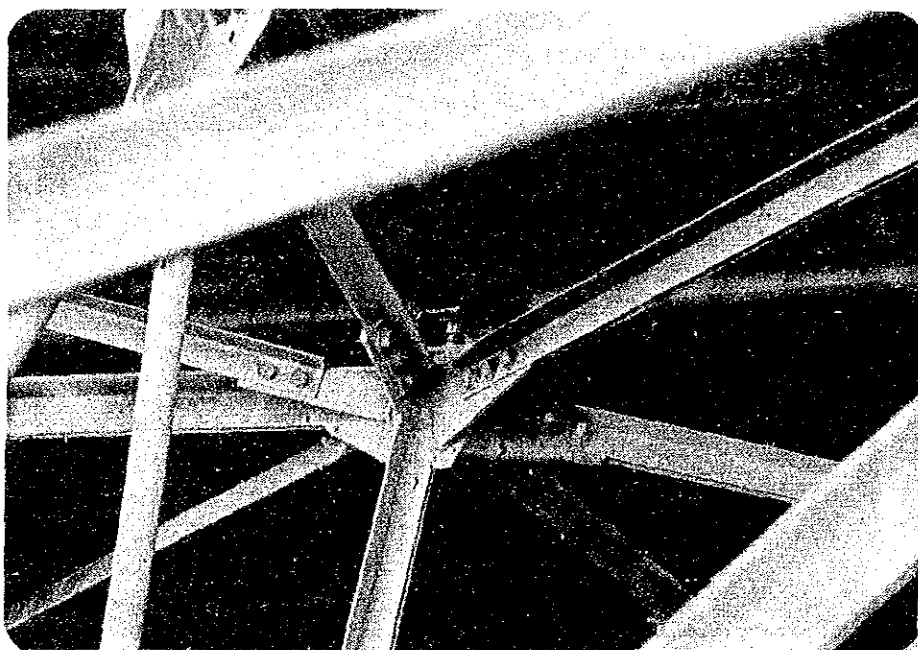
FILM NO.		MEGA NO.	32
DATE		DATA	1.5.3
PLACE	Backup Structure		
Connection area			



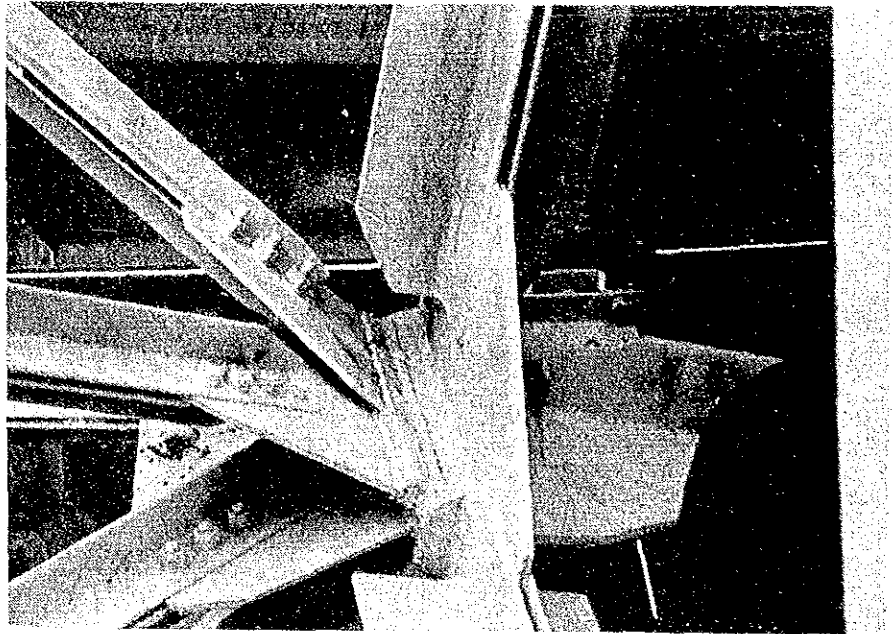
FILM NO.		MEGA NO.	17
DATE		DATA	1.5.4
PLACE	Backup Structure		
Connection area			



FILM NO.		MEGA NO.	15
DATE		DATA	1.5.5
PLACE	Backup Structure		
Connection area			



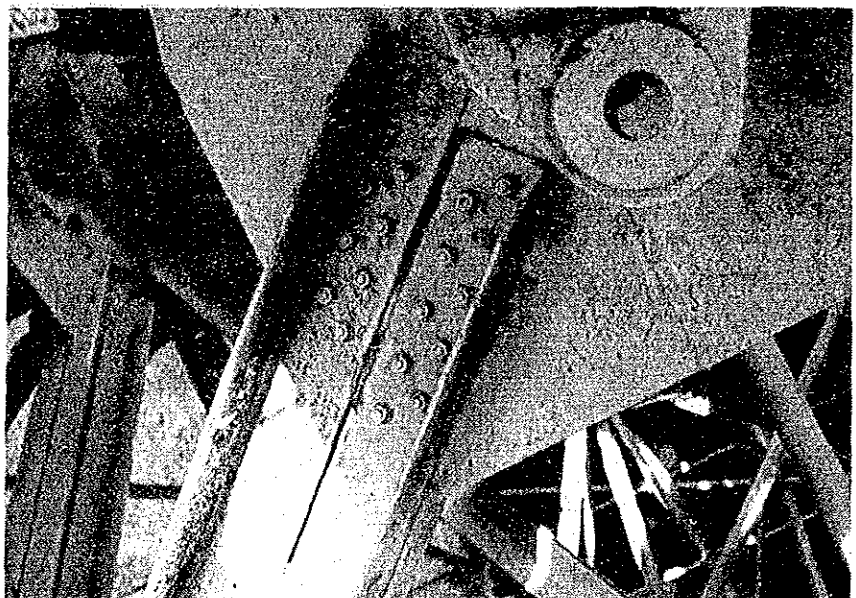
FILM NO.		MEGA NO.	10
DATE		DATA	1.6.1
PLACE	Center Hub		
<p>Connection area with backup structure</p>			



FILM NO.		MEGA NO.	23
DATE		DATA	1.6.2
PLACE	Center Hub		
<p>Connection area with bullgear mount</p>			



FILM NO.		MEGA NO.	34
DATE		DATA	1.6.3
PLACE	Center Hub		
<p>Connection area with bullgear mount</p>			



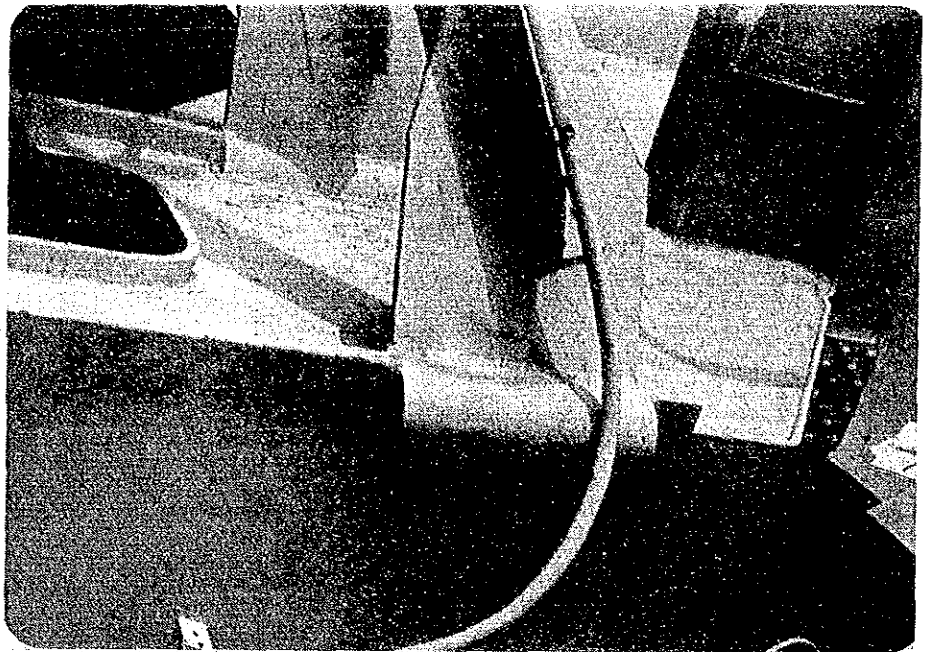
FILM NO.		NEGA NO.	29
DATE		DATA	1.6.4
PLACE	Center Hub		
<p>Dye penetrant test at weld zone between conter hub and backup structure</p>			



FILM NO.		NEGA NO.	34
DATE		DATA	1.6.5
PLACE	Center Hub		
<p>Dye penetrant test at weld zone between center hub and bullgear mount</p>			



FILM NO.		MEGA NO.	33
DATE		DATA	1.6.6
PLACE	Center Hub		
<p>Dye penetrant test at weld zone between center hub and EL shaft box</p>			



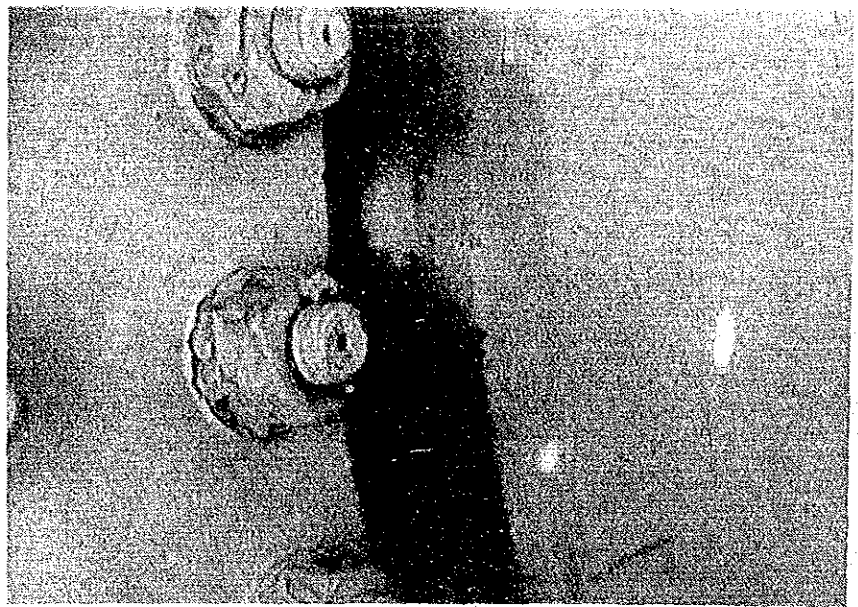
FILM NO.		MEGA NO.	14
DATE		DATA	1.6.7
PLACE	Center Hub		
<p>Dye penetrant test at weld zone between center hub and EL shaft box</p>			



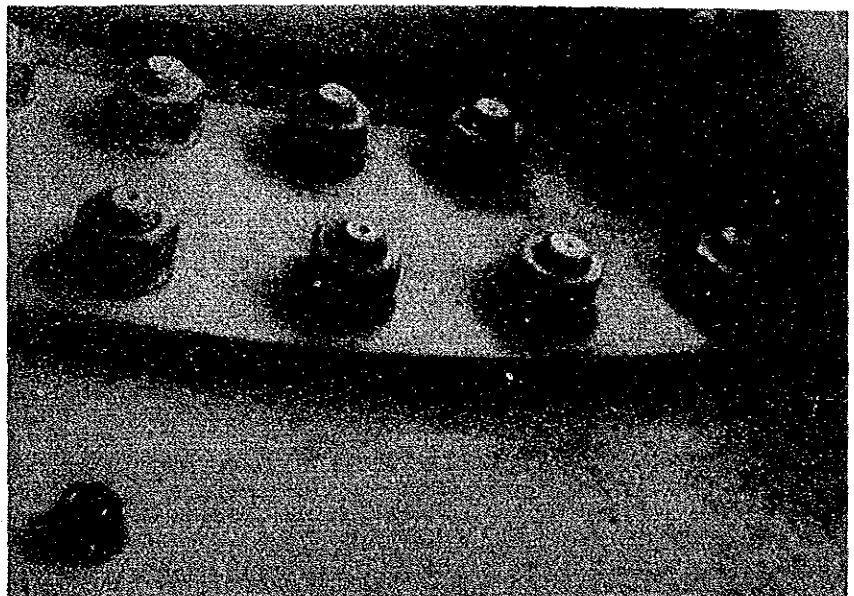
FILM NO.		MEGA NO.	19
DATE		DATA	1.7.1
PLACE	EL Shaft		
<p>Dye penetrant test</p>			



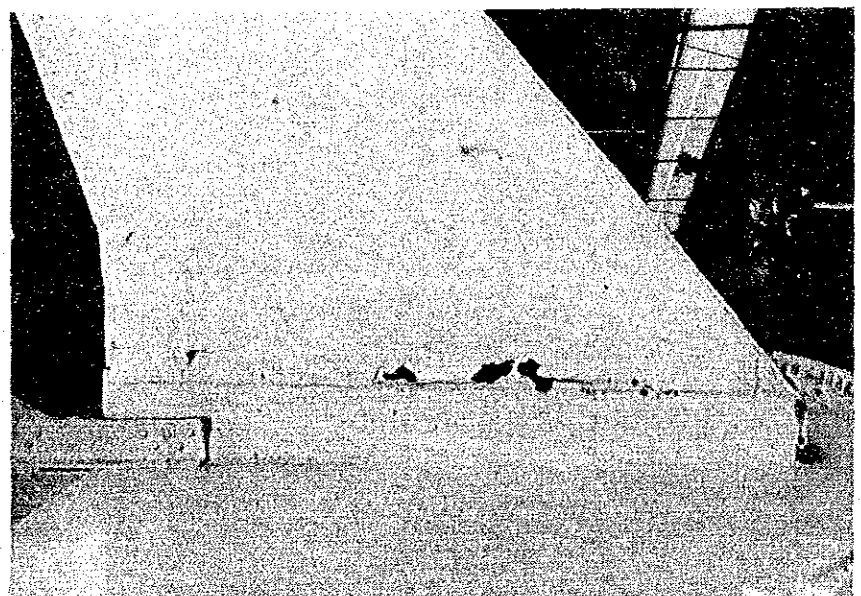
FILM NO.		MEGA NO.	8
DATE		DATA	1.7.2
PLACE	EL Shaft		
<p>Dye penetrant test at weld zone between EL shaft and shaft box</p>			



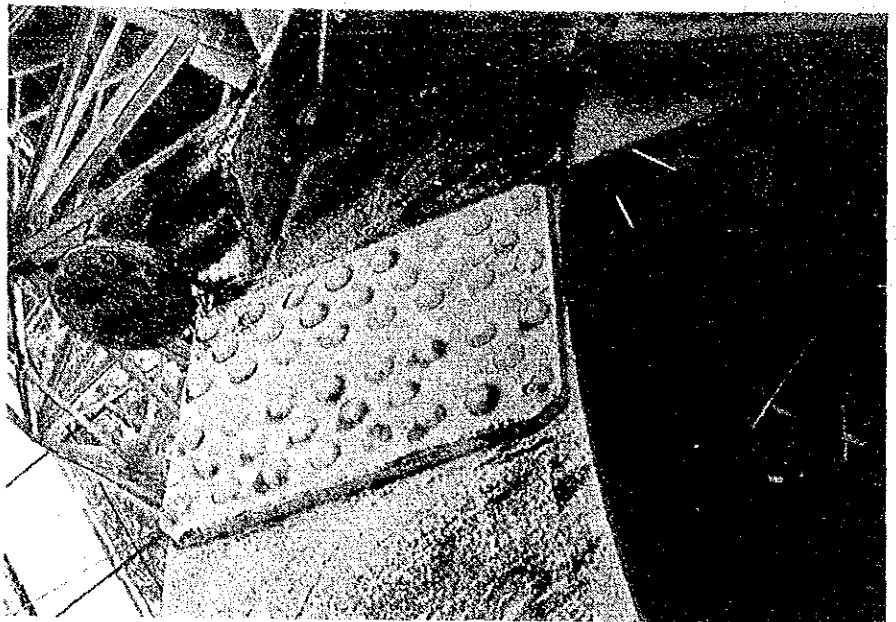
FILM NO.		MEGA NO.	23
DATE		DATA	1.7.3
PLACE	EL Shaft		
<p>Joint plate for EL shaft</p>			



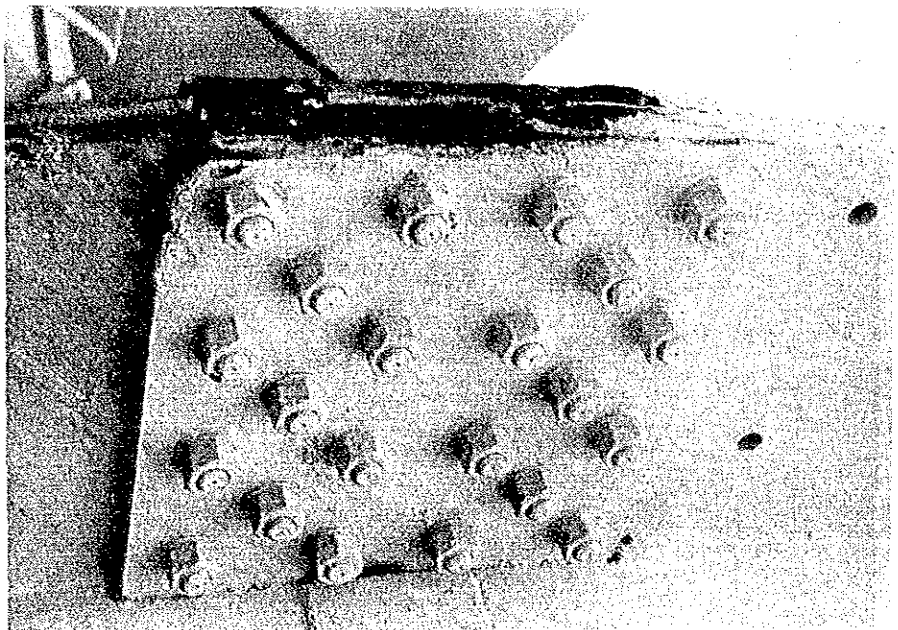
FILM NO.		MEGA NO.	15
DATE		DATA	1.8.1
PLACE	Bullgear Mount		



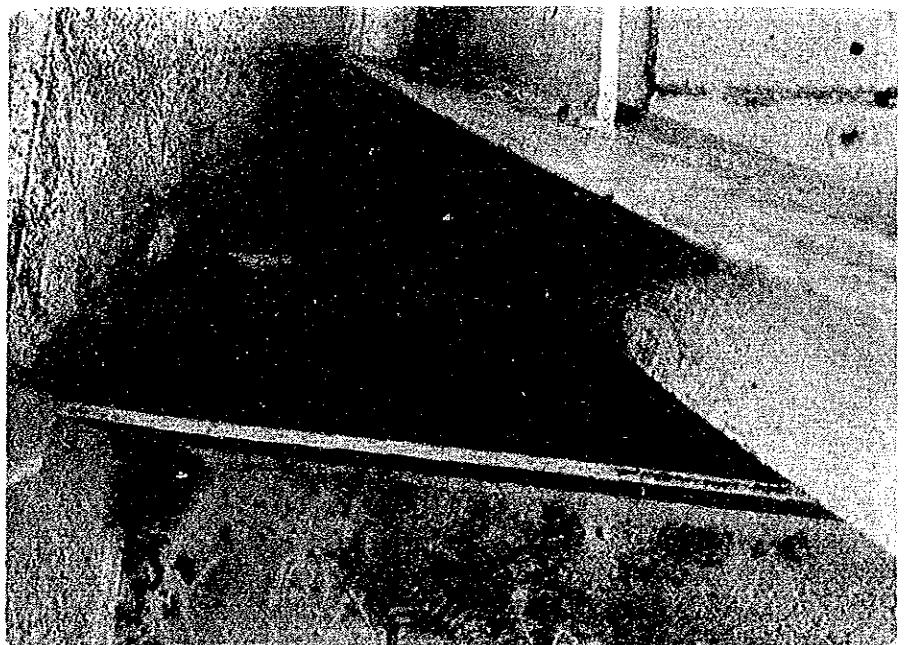
FILM NO.		MEGA NO.	1
DATE		DATA	1.8.2
PLACE	Bullgear Mount		
Connection area			



FILM NO.		MEGA NO.	10
DATE		DATA	1.8.3
PLACE	Bullgear Mount		
Connection area			



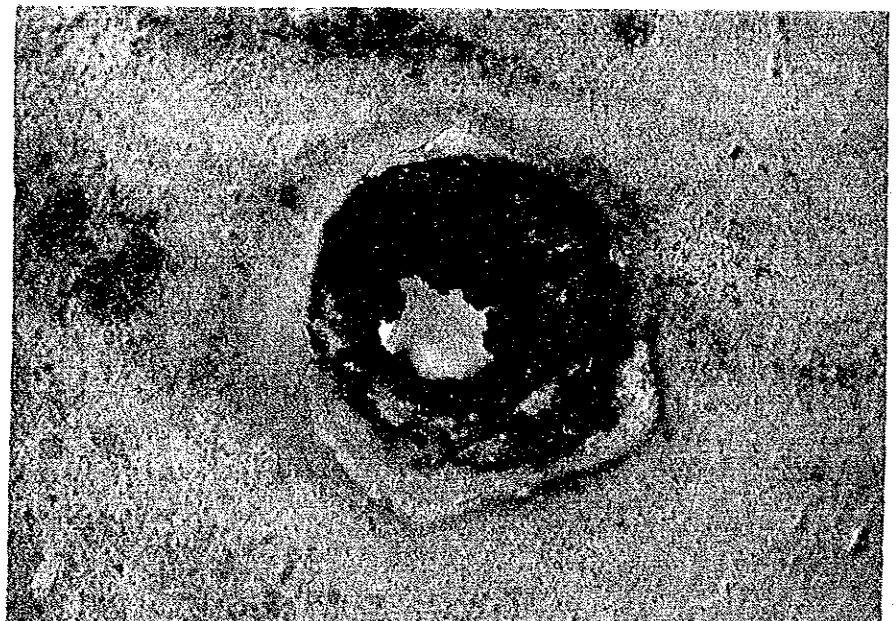
FILM NO.		MEGA NO.	12
DATE		DATA	1.8.4
PLACE	Bullgear Mount		
Water pooling			



FILM NO.		MEGA NO.	11
DATE		DATA	1.8.5
PLACE	Bullgear Mount		
Plants on concrete			



FILM NO.		MEGA NO.	9
DATE		DATA	1.8.6
PLACE	Bullgear Mount		
Drain hole			



FILM NO.		MEGA NO.	
DATE		DATA	1.9.1
PLACE	Yoke		
Plummer Block and top of Yoke			

