

付 図

图1(1) District概要图  
- District I -

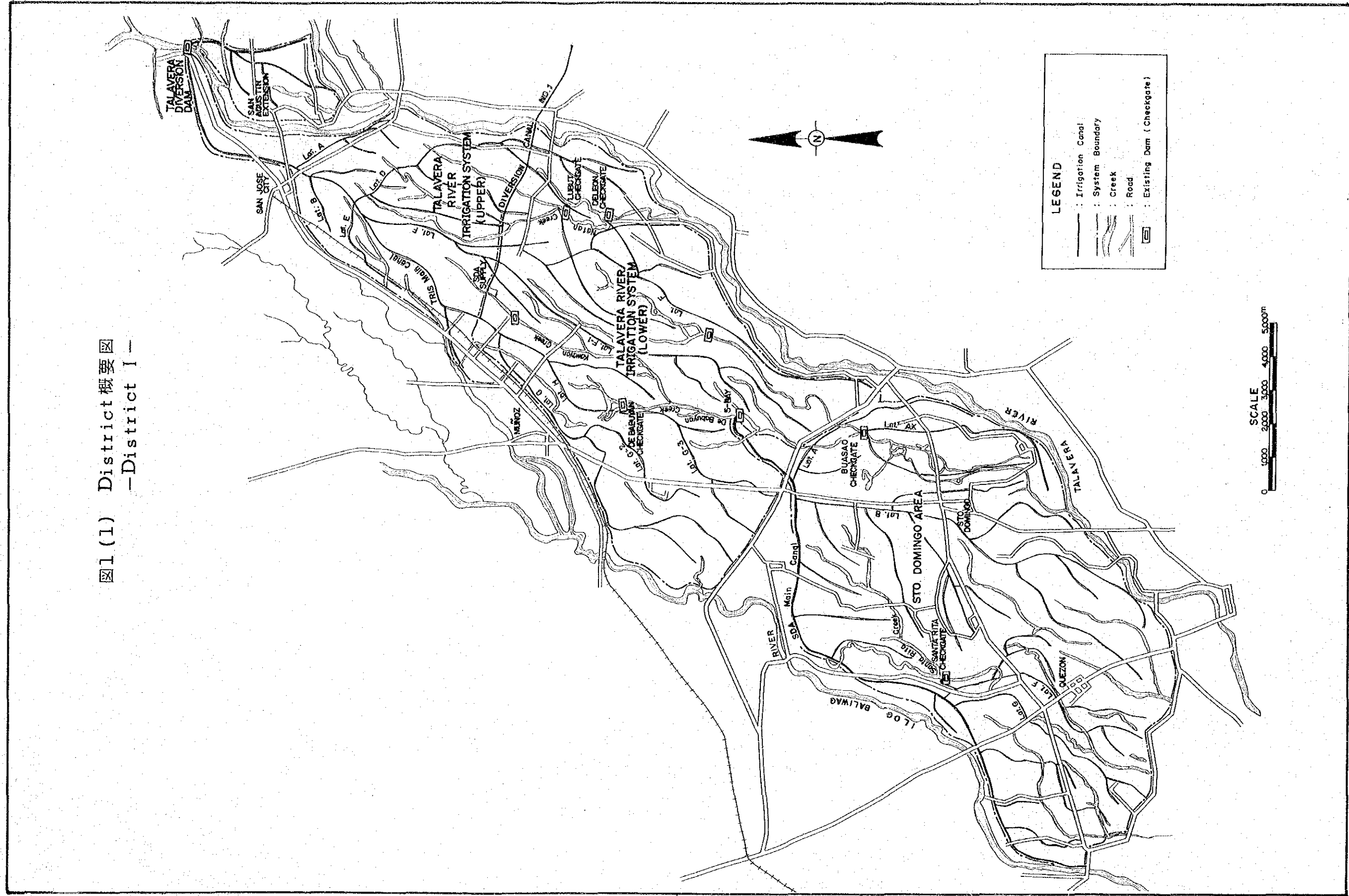



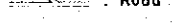



図1 (2) District 概要図  
-District II-

**LEGEND**

-  : Irrigation Canal
-  : System Boundary
-  : Creek
-  : Road
-  : Existing Dam (Checkgate)

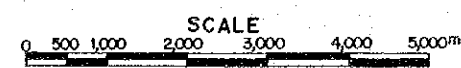
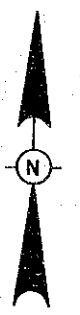
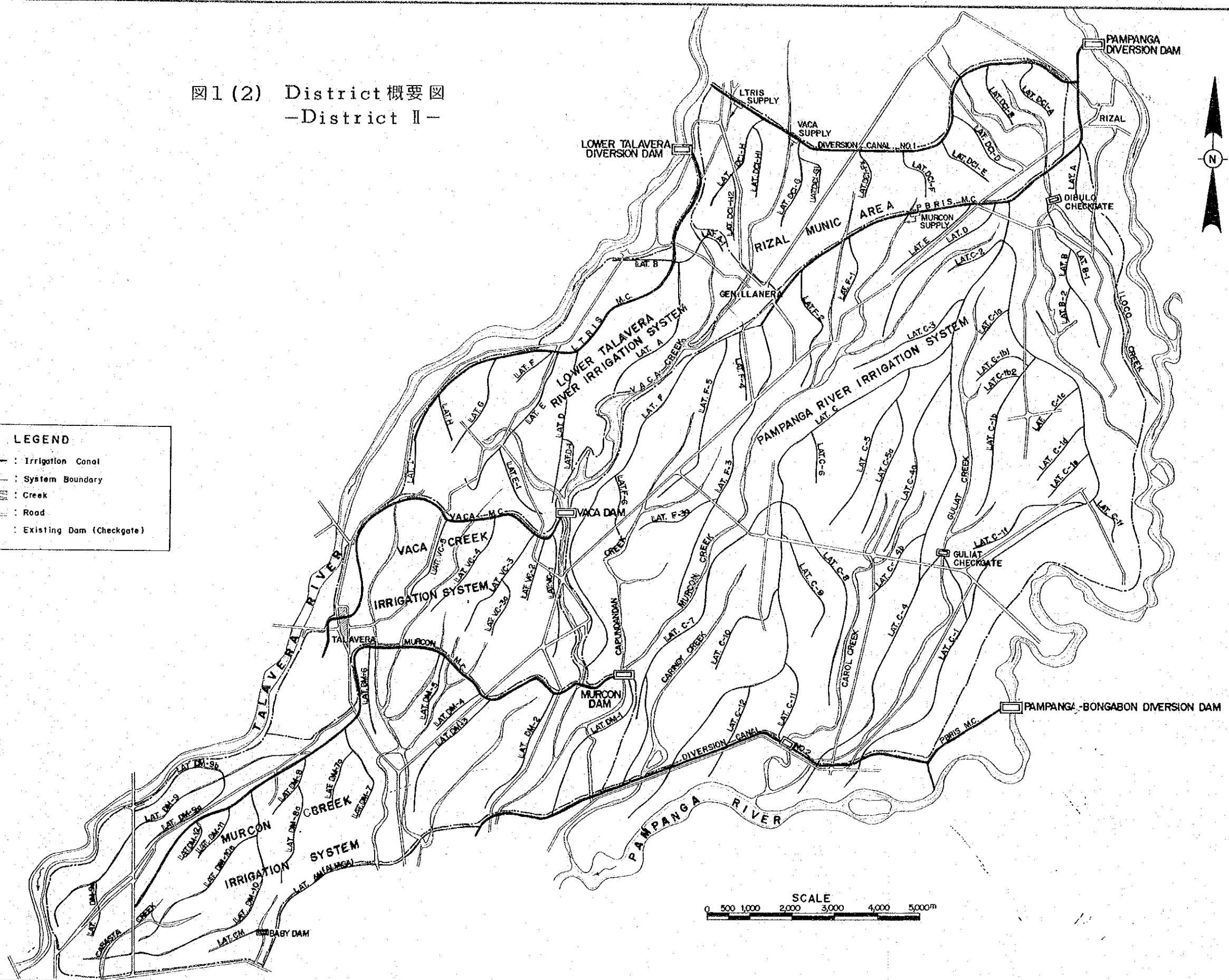


図1 (3) District概要図  
-District III-

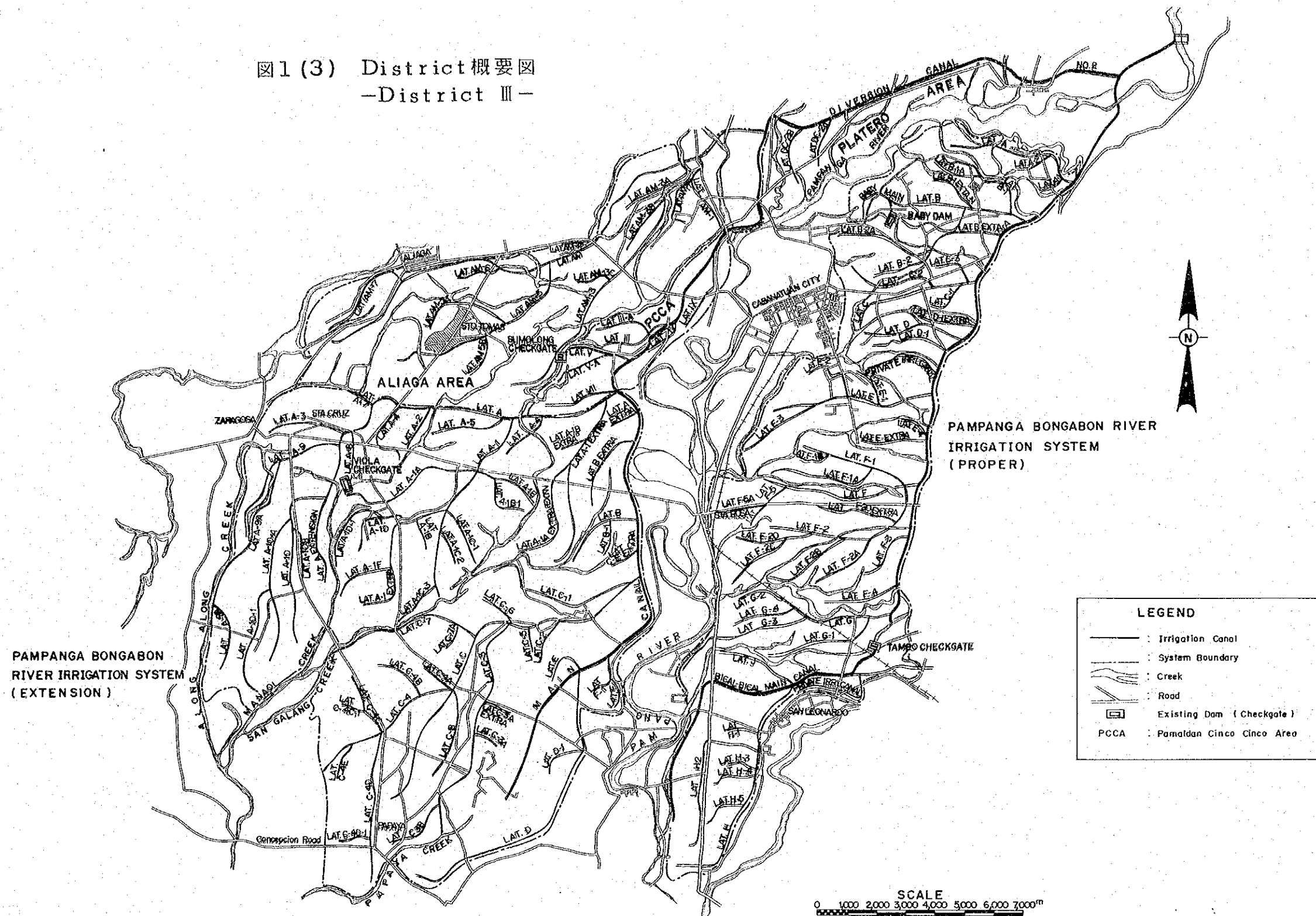


图1(4) District概要图  
-District IV-

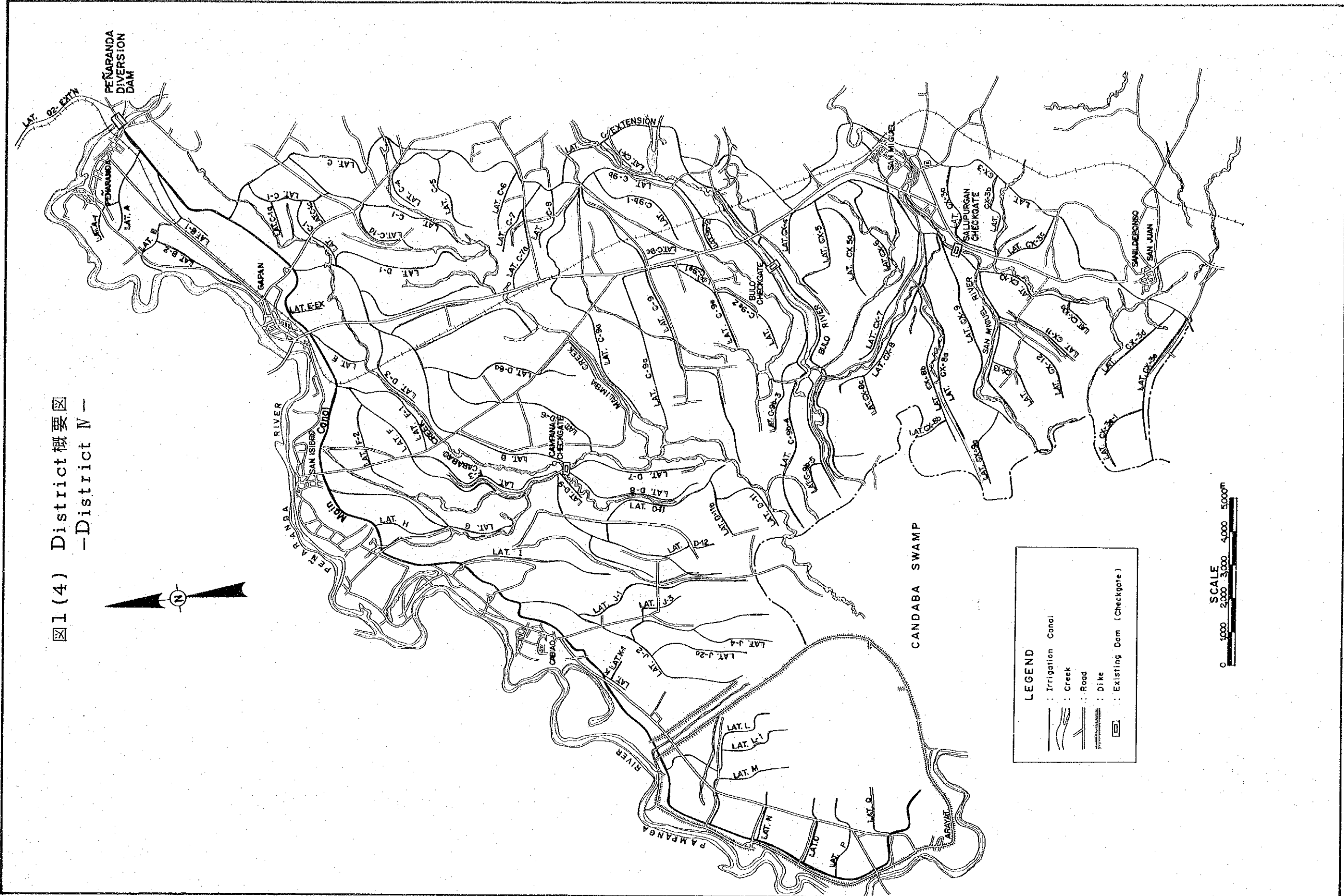
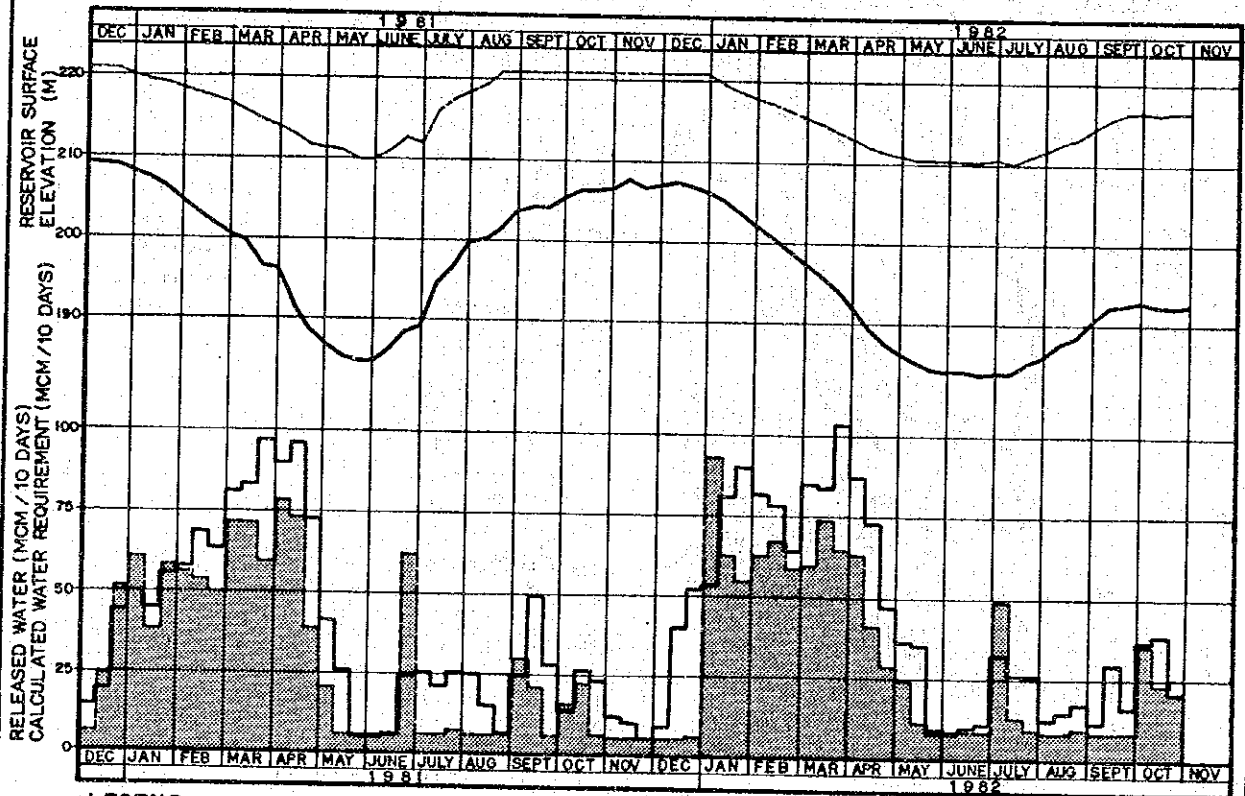
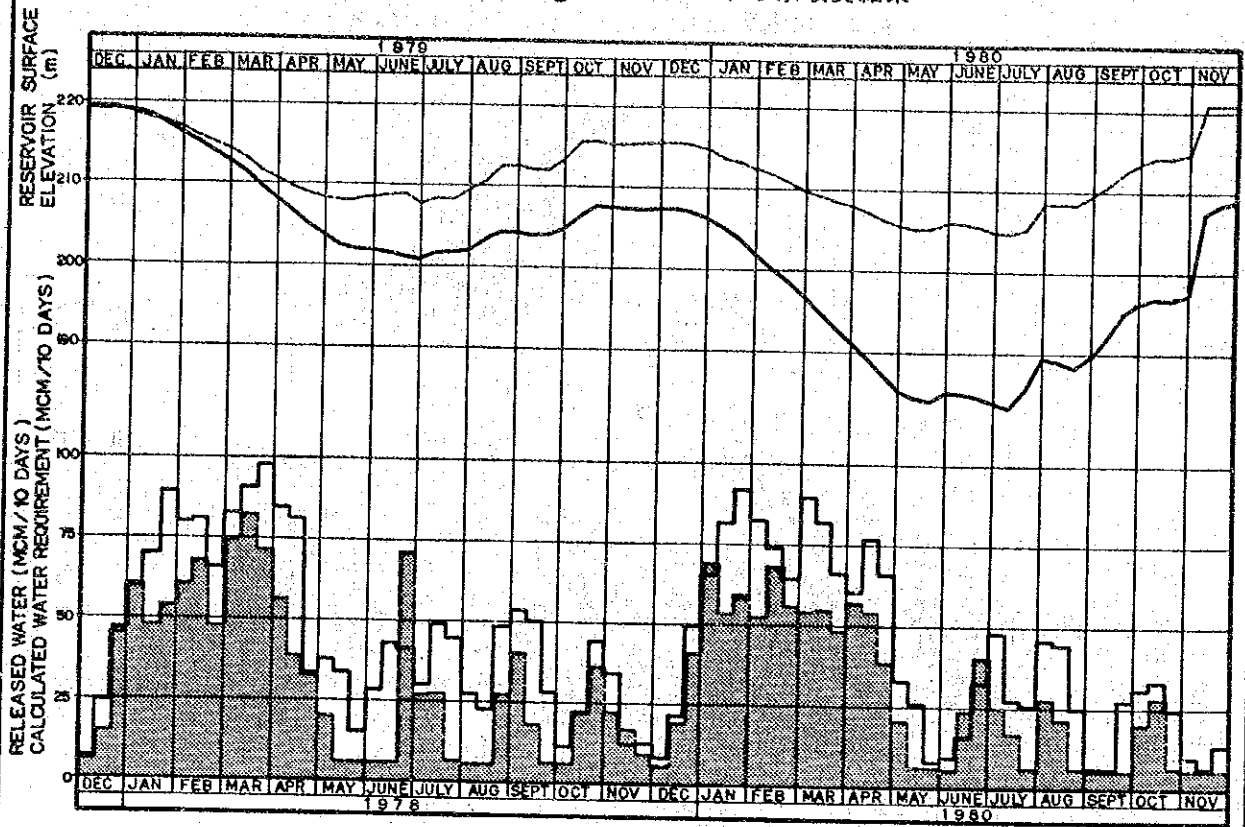


図2 Pantabanganダムにおける水収支結果



LEGEND

- : RELEASED WATER
- : CALCULATED WATER REQUIREMENT
- : RECORDED RESERVOIR SURFACE ELEVATION
- : RESERVOIR SURFACE ELEVATION BASED ON CALCULATED WATER REQUIREMENT

図3 用水到達時間のシミュレーション結果

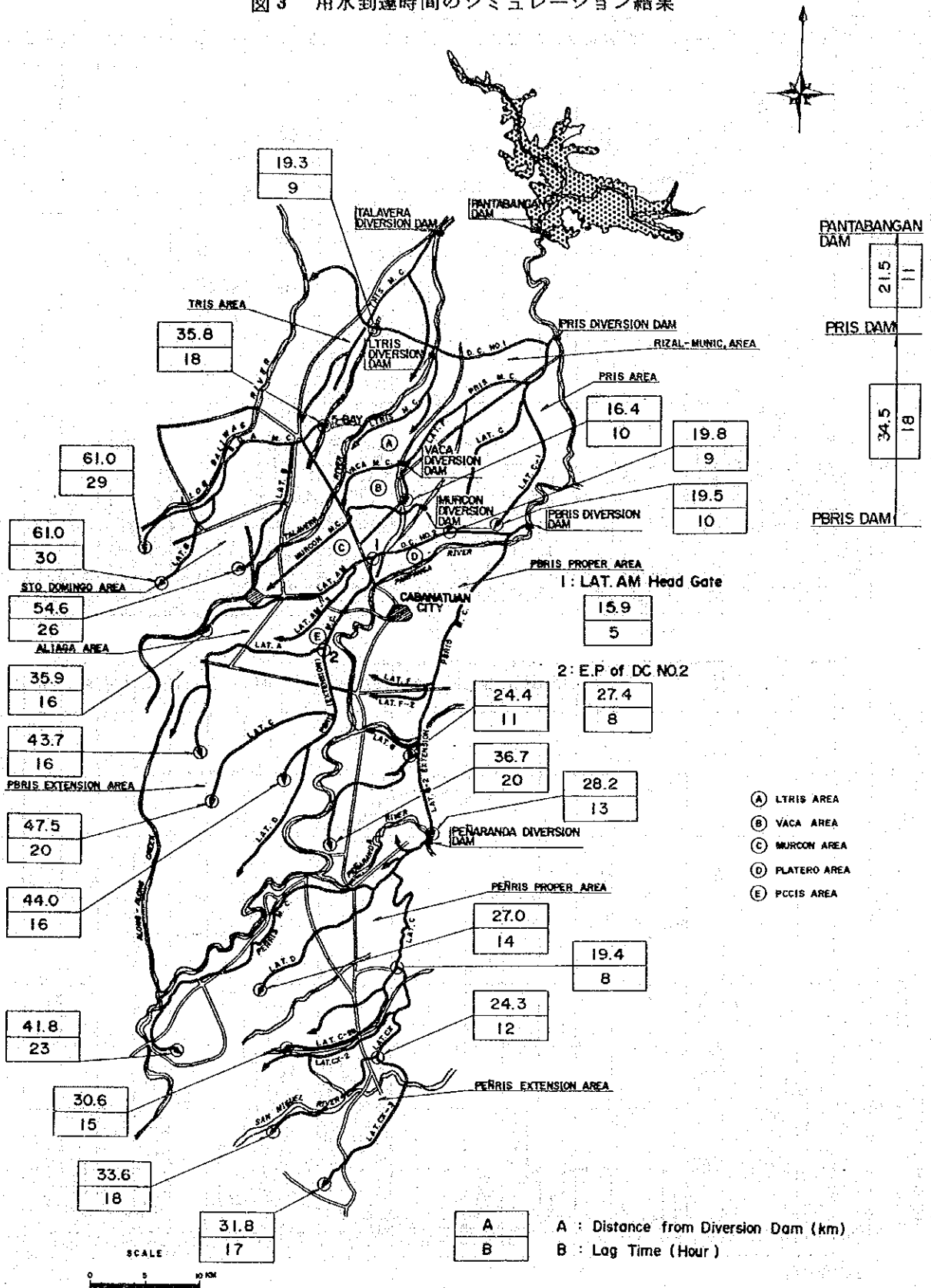
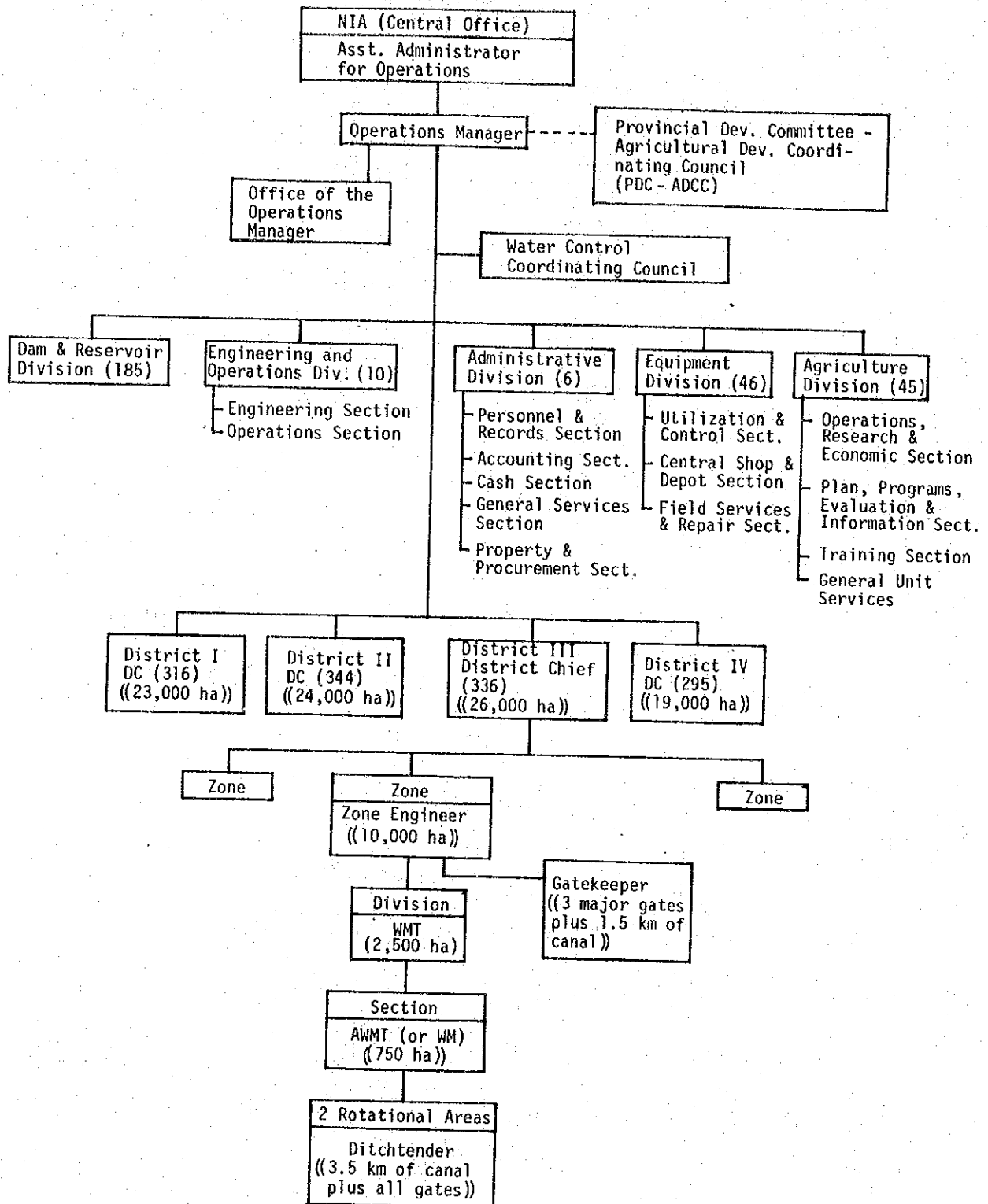


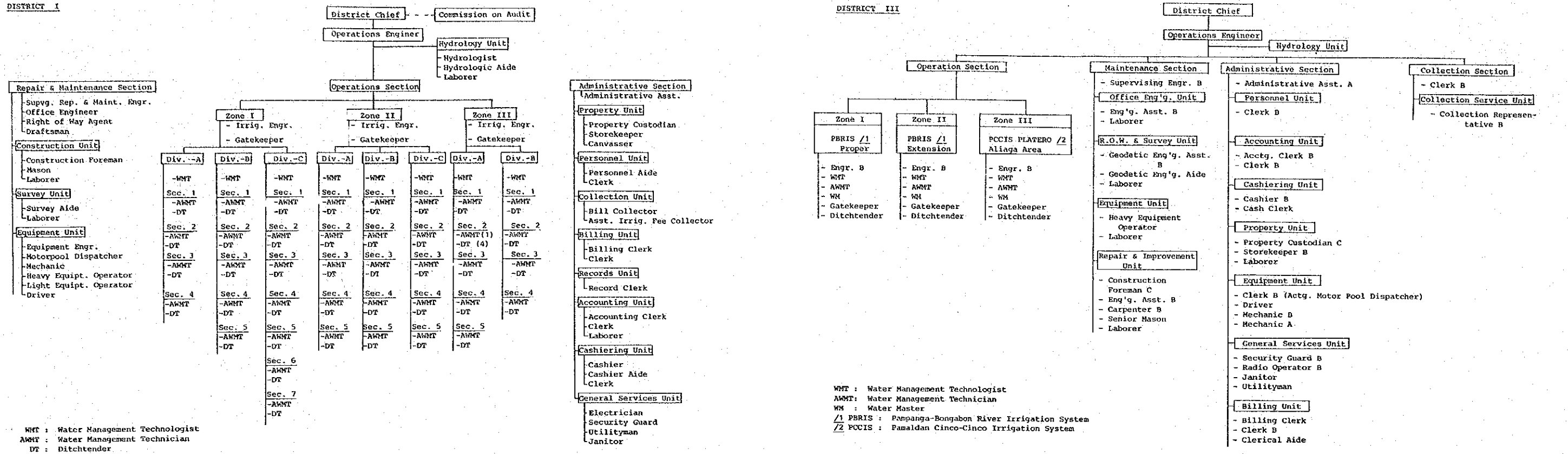
図4 UPR IIS事務所の組織図



Remarks: Figures in ( ) are numbers of staff including permanent, temporary and daily personnel (as of July 1983).  
 Figures in ( ) are planted area (ha) and work standards.



図5 District I, II, III & IVの組織図



WMT: Water Management Technologist  
AMWT: Water Management Technician

図6 運営・管理上の問題

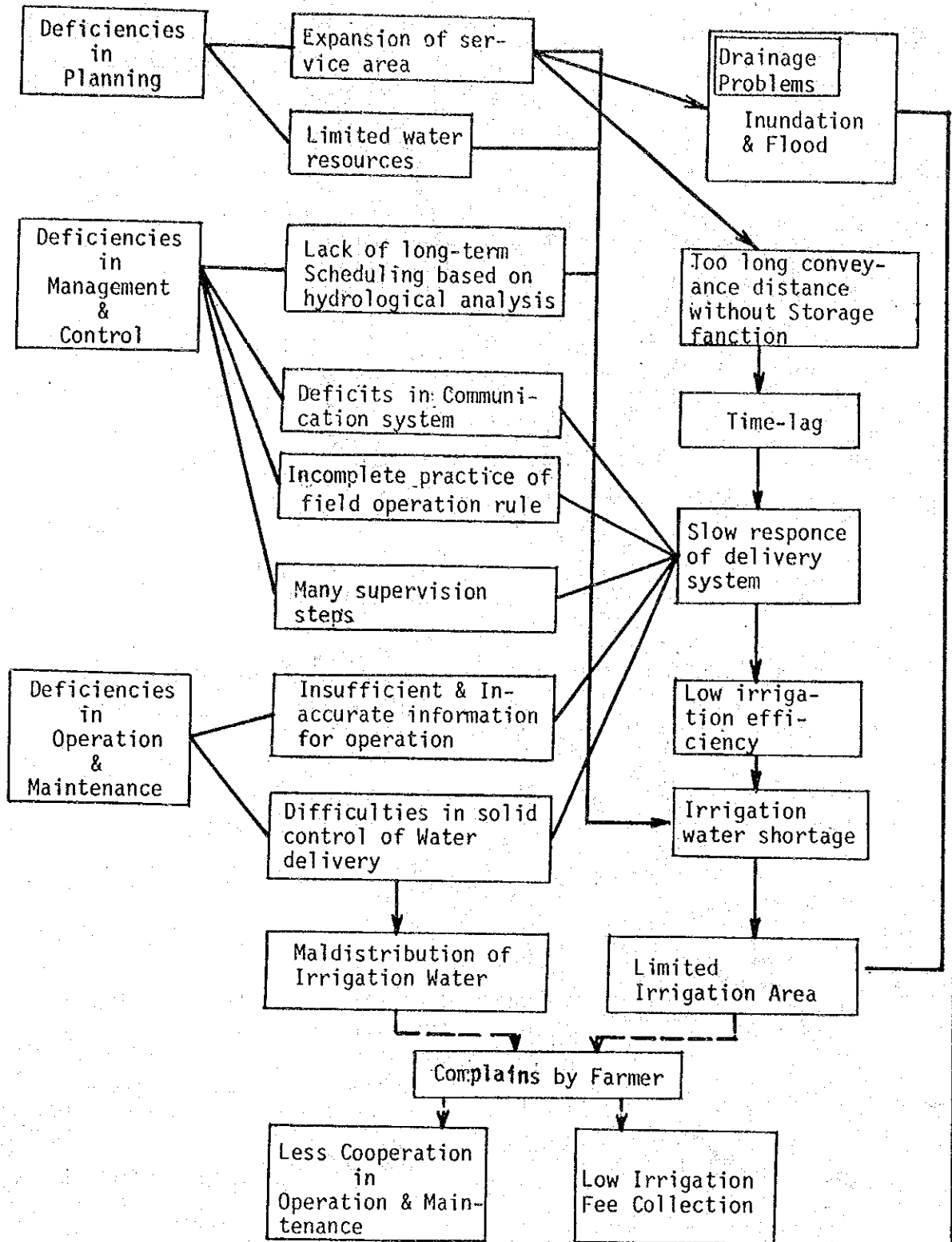
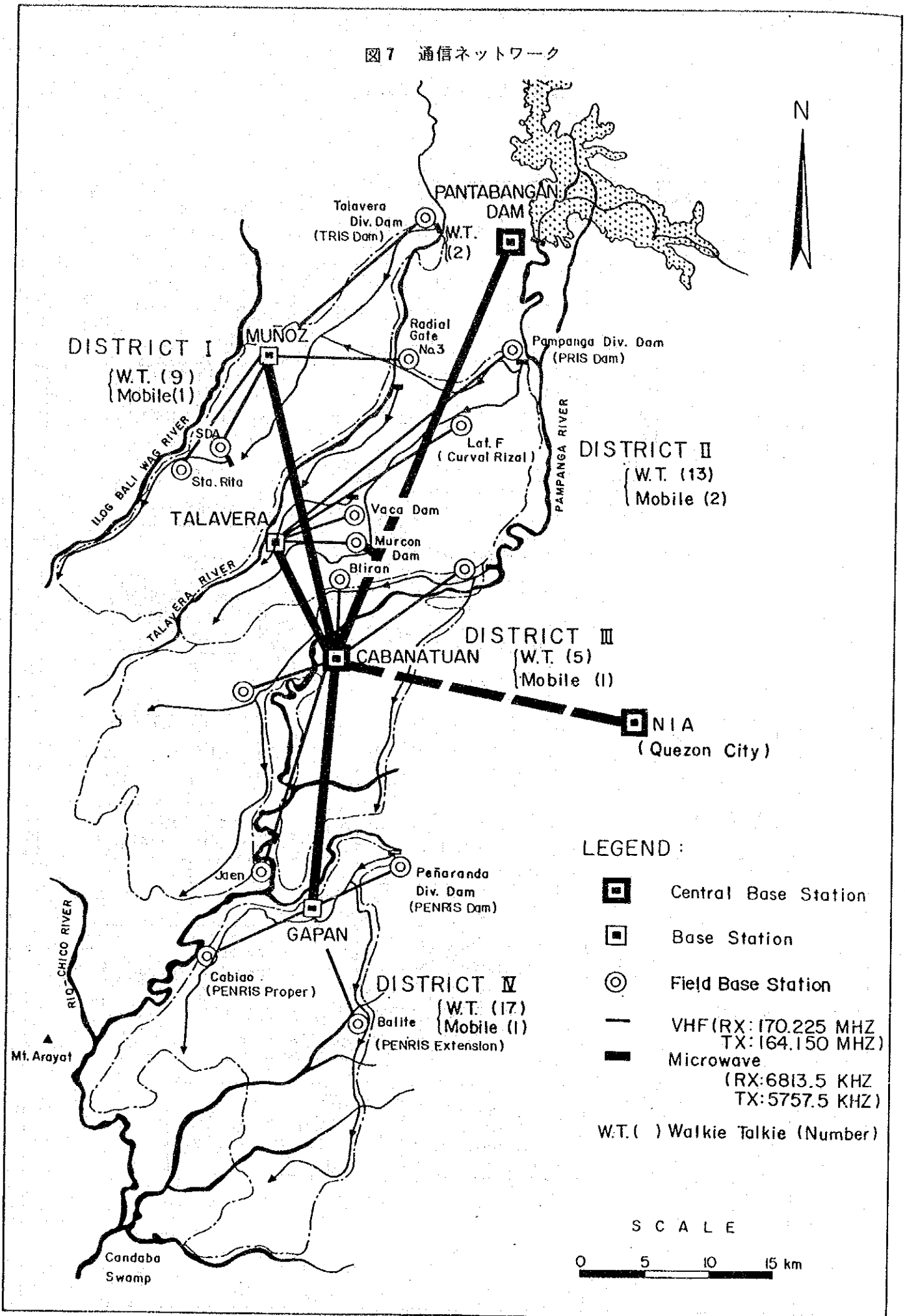


図7 通信ネットワーク

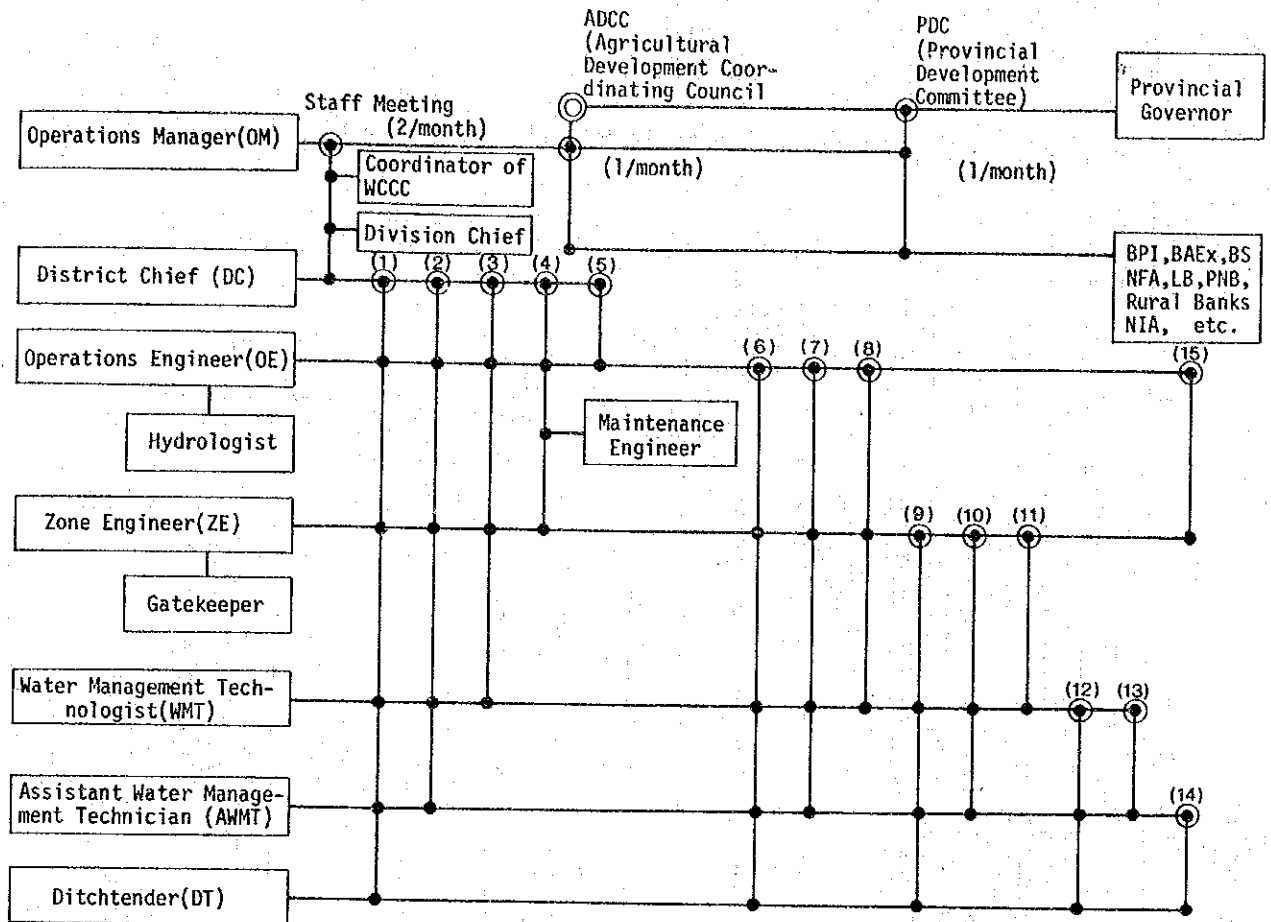


**LEGEND :**

- ☐ Central Base Station
- ◻ Base Station
- ⊙ Field Base Station
- VHF (RX: 170.225 MHZ  
TX: 164.150 MHZ)
- Microwave  
(RX: 6813.5 KHZ  
TX: 5757.5 KHZ)
- W.T.( ) Walkie Talkie (Number)

**S C A L E**  
0 5 10 15 km

図8 維持管理のためのミーティングシステム



Remarks: (1) - (15) Kinds of meeting/● Chairman/◎ Honorable Chairman/  
● Attendant

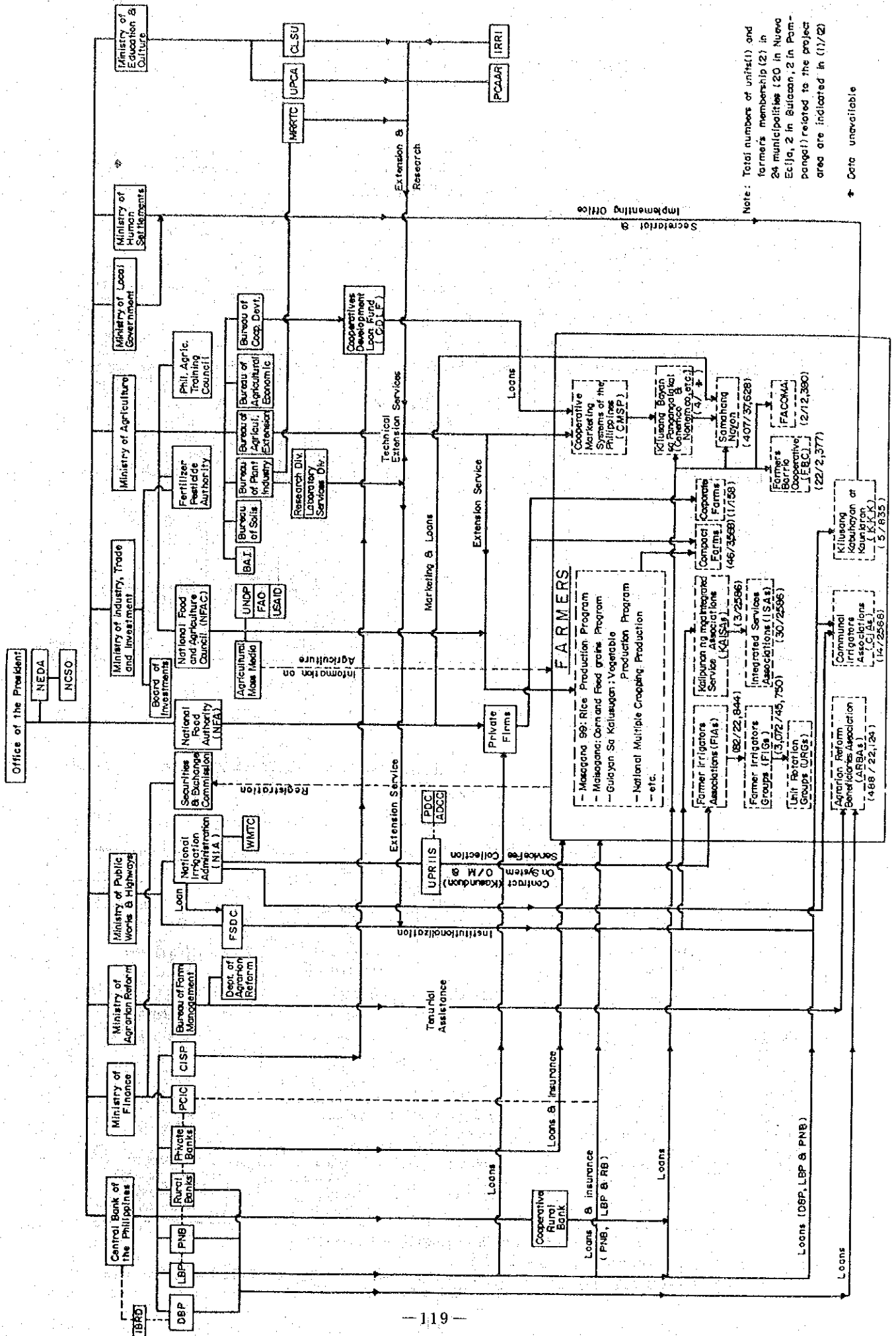
Meeting	FREQUENCY OF THE MEETING			
	I	II	III	IV
(1)	2/month	4/year	Occasional	Occasional (min. 2/year, Collection season)
(2)	2/week + 2/month (Pay day)	Occasional	1/month + occasional	2/month (Pay day)
(3)	-do-	1/month	2/month (Pay day)	2/month 2nd 84 monday)
(4)	2/week	1/week	1/week	2/month
(5)	Occasional	Occasional	Occasional	Occasional
(6)	"	4/month	"	"
(7)	2/week	Occasional	1/month	"
(8)	Occasional	"	2/month (Pay day)	"
(9)	4/month	1/month	1/month	"
(10)	Occasional	Occasional	"	2/month
(11)	"	"	2/month (Pay day)	"
(12)	2-3/month	4/month	4/month	1 or 2/month
(13)	Occasional	"	Occasional	Occasional
(14)	"	Occasional	4/month	1 or 2/month
(15)	"	"	4/month	Occasional*

\* Including Hydrologist and Gatekeeper

N.B. - In principle, meeting places are as follows:

- OM & DC Level - Office
- OE, ZE & WMT Level - Office or field
- WMT, AWMT & DT Level - Field

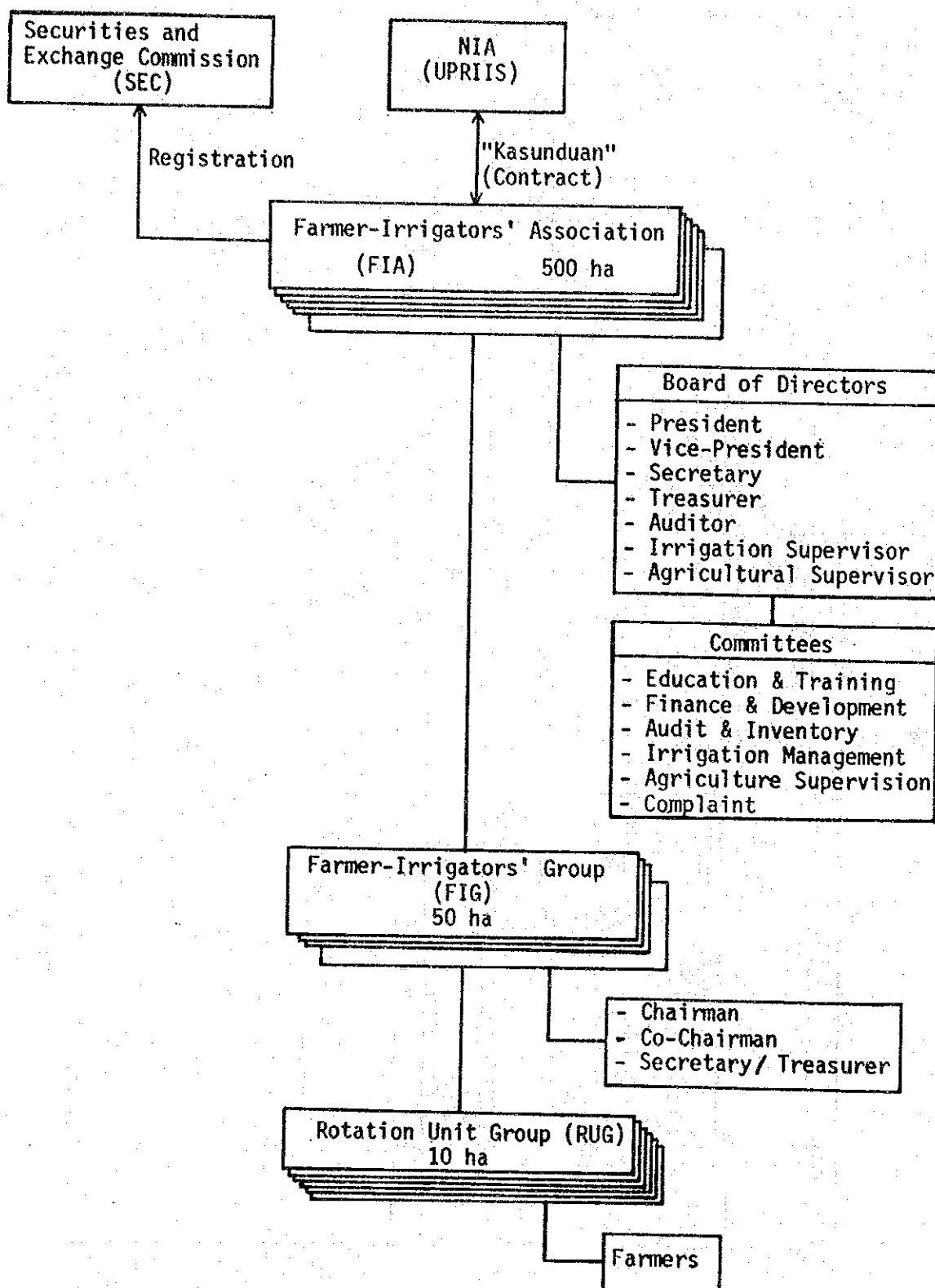
図9 農業および食糧開発計画に関する政府の開発組織



Note: Total numbers of units(1) and farmers membership (2) in 24 municipalities (20 in Nueva Ecija, 2 in Sulayan, 2 in Pampanaga) related to the project area are indicated in (1)/(2)

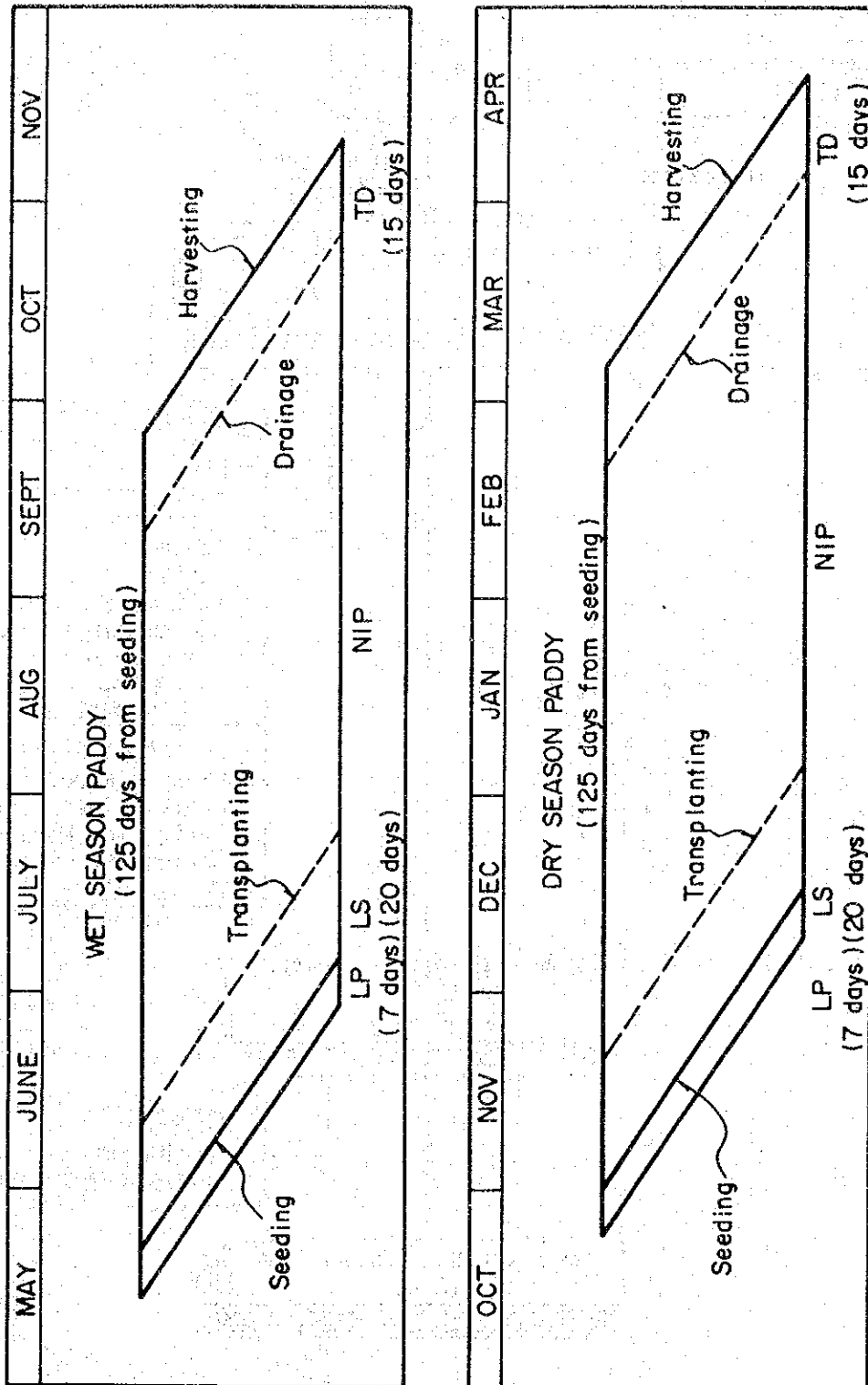
\* Data unavailable

図10 既存農民かんがい組合組織図



Remarks: One FIA consists of 8 to 10 FIGs in general.  
One FIG consists of 4 to 5 RUGs in general.

図11 計画作付体系



LP : Land Preparation, NIP : Normal Irrigation Period  
 LS : Land Soaking, TD : Terminal Drainage

Note : Seeding in District IV is started 15 days before commencement of seeding in other District.

図 1 2 Re-use 堰を含むかんがい用水系統図

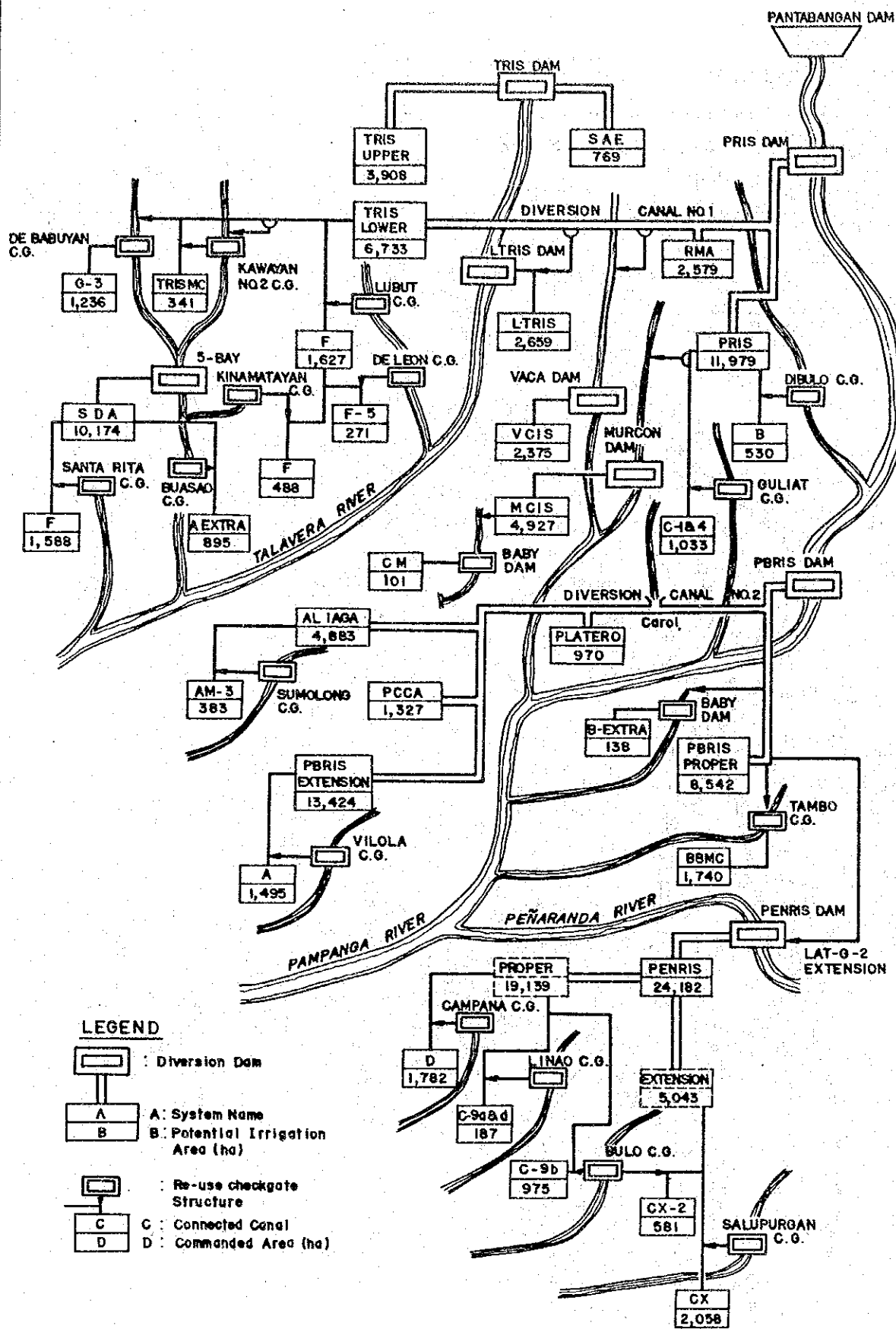




図 1.3 San Antonio地区の洪水地域



LEGEND

- Boundary of catchment area
- - - - - Boundary of PBRIS PROPER
- ~~~~~ Contour
- ③ River block No.
- ← Overflow point
- ▨ Inundation Area (Present condition)
- ▤ Inundation Area (Improved condition)

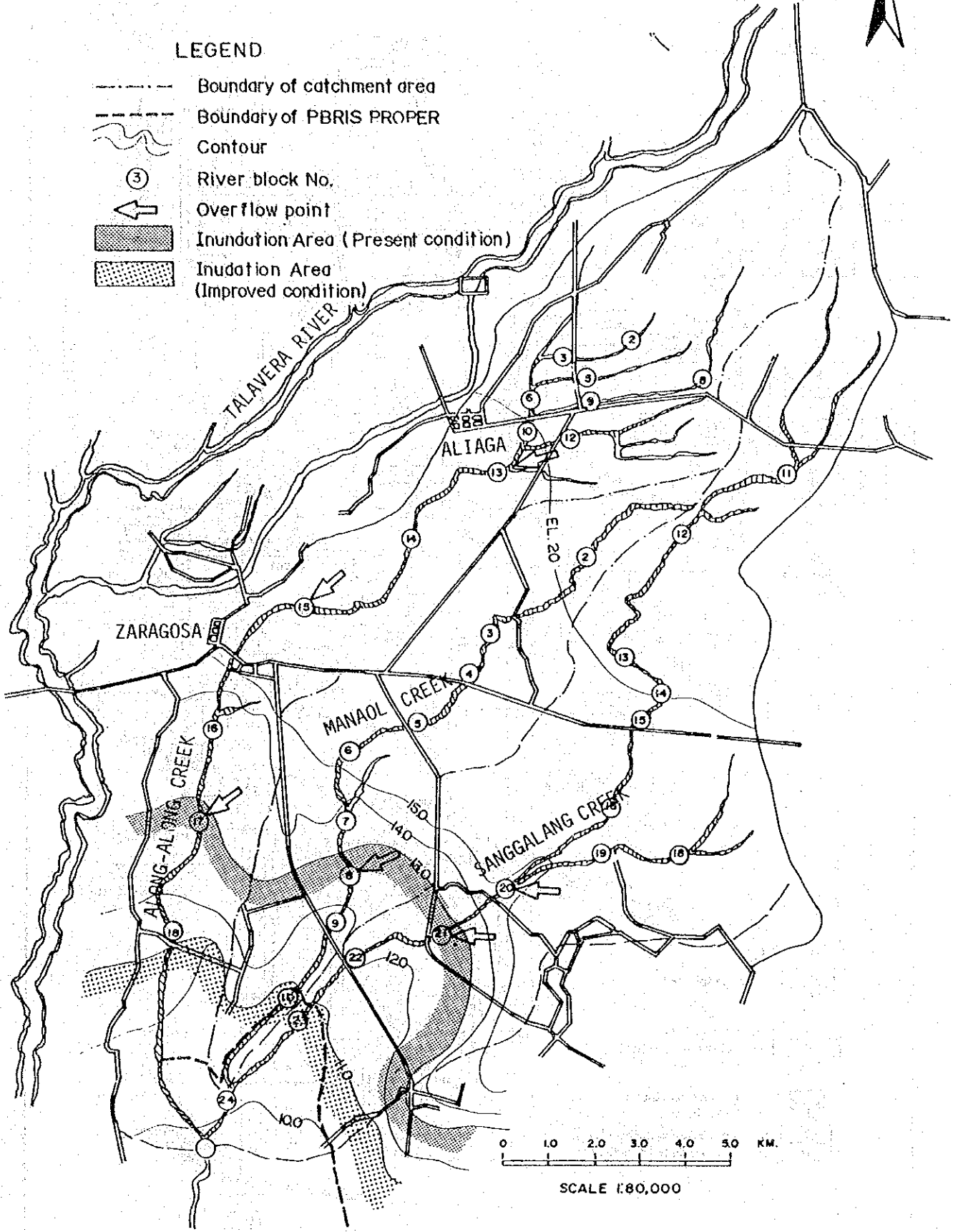


図14 北 Candaba 地区の湛水地域

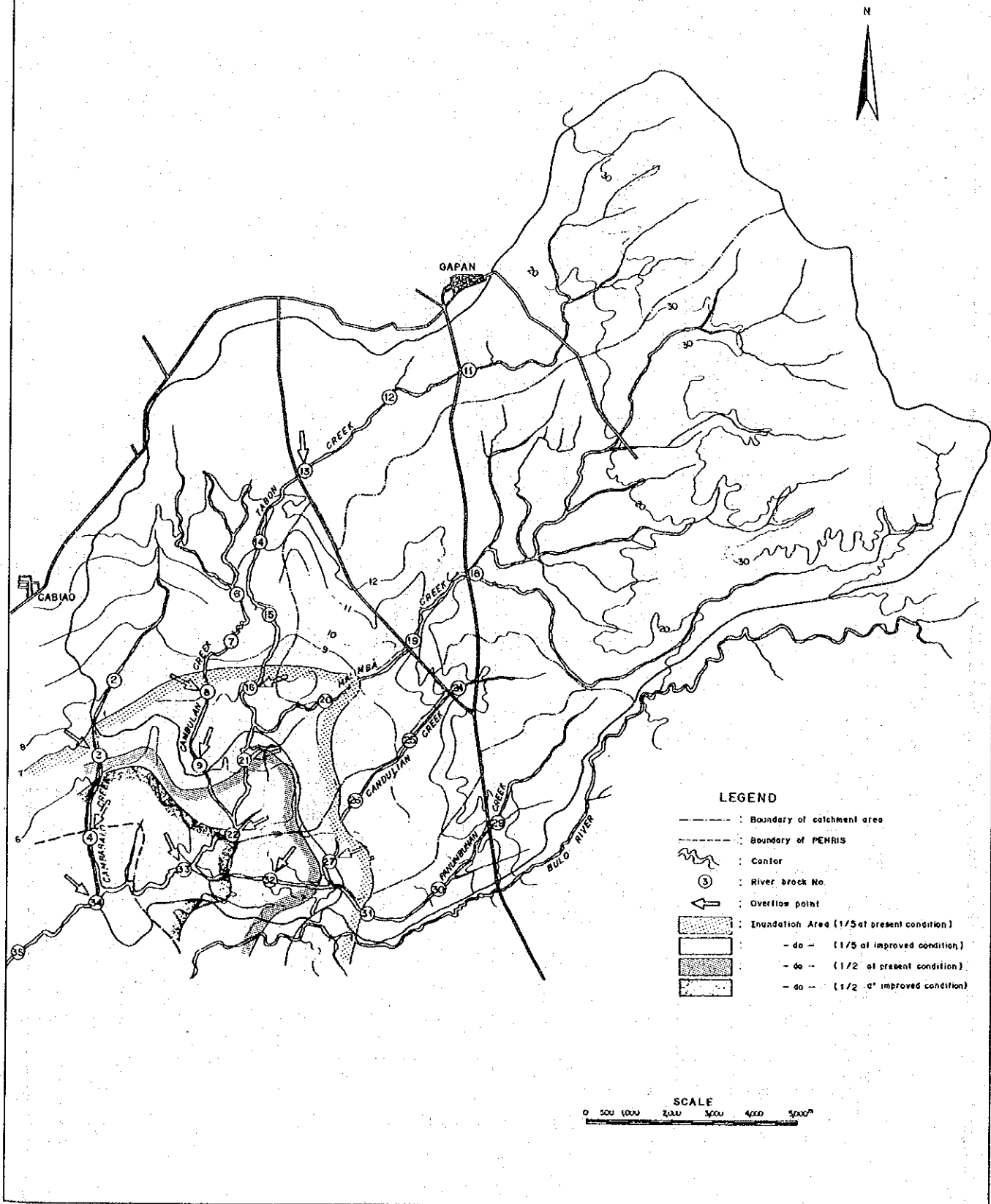


図 15 Talavera 川計画縦断面図 (10年)

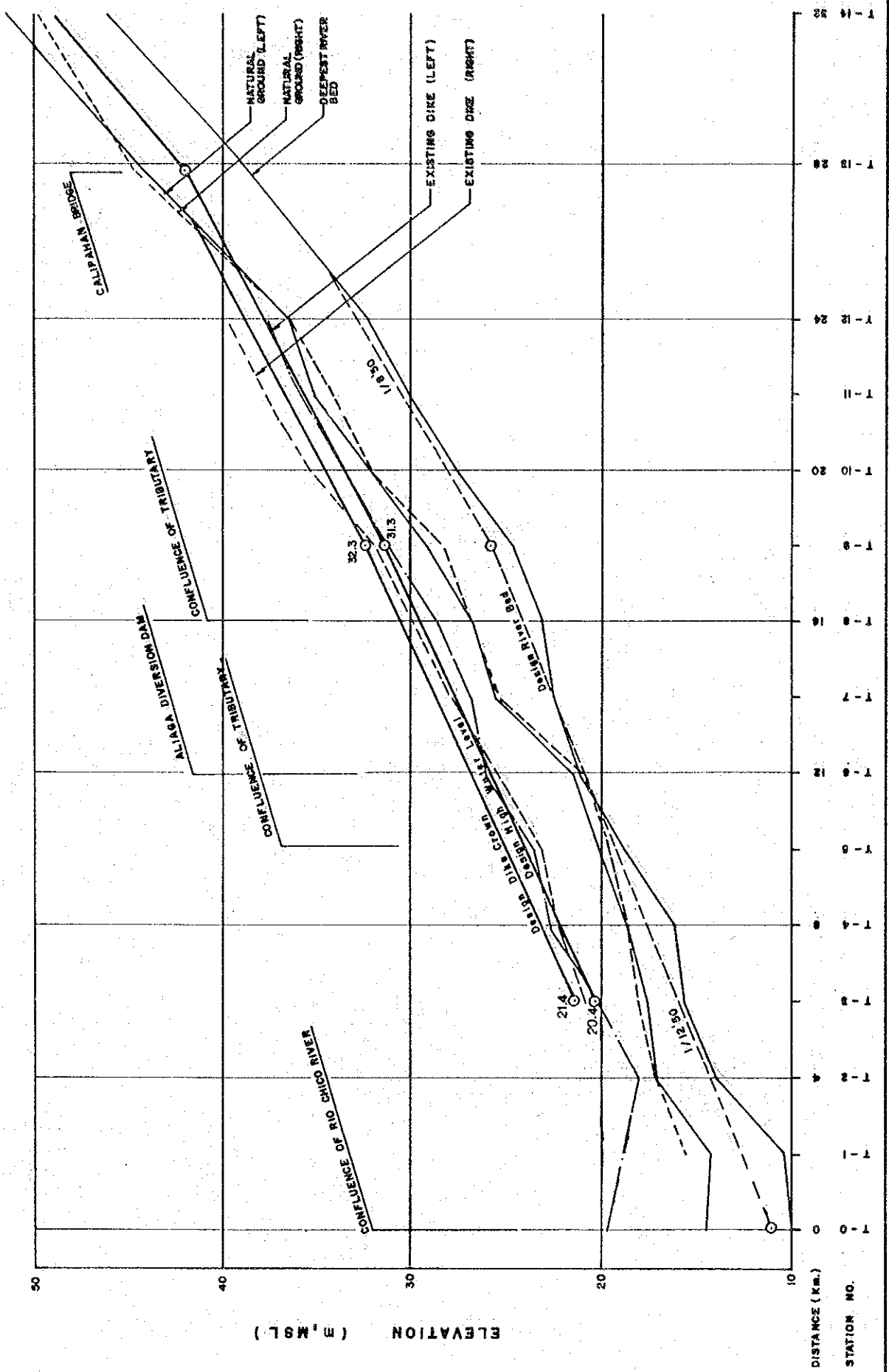


図 1 6 Talavera 川計画横断面図

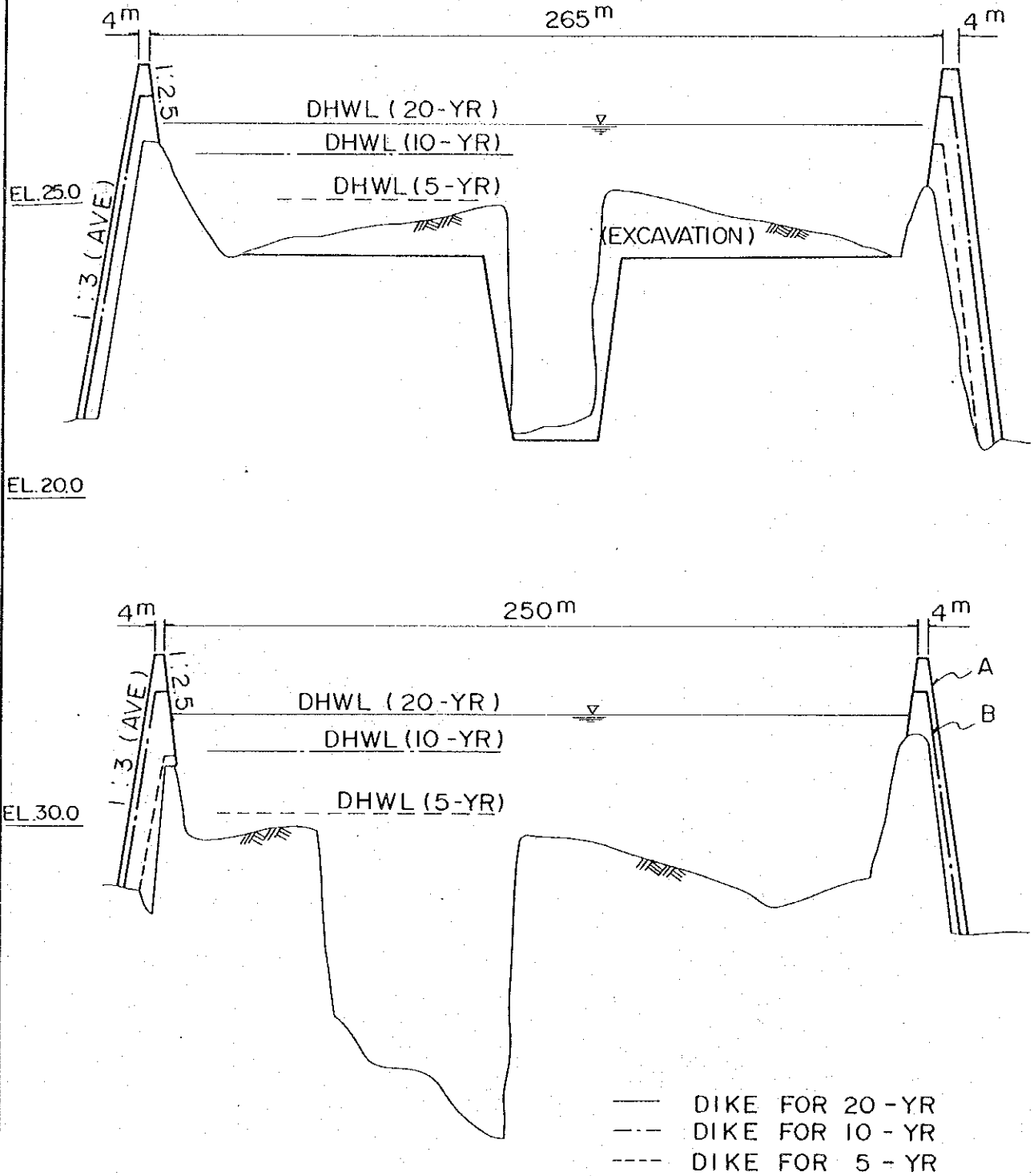


图 17 堤防標準横断面图

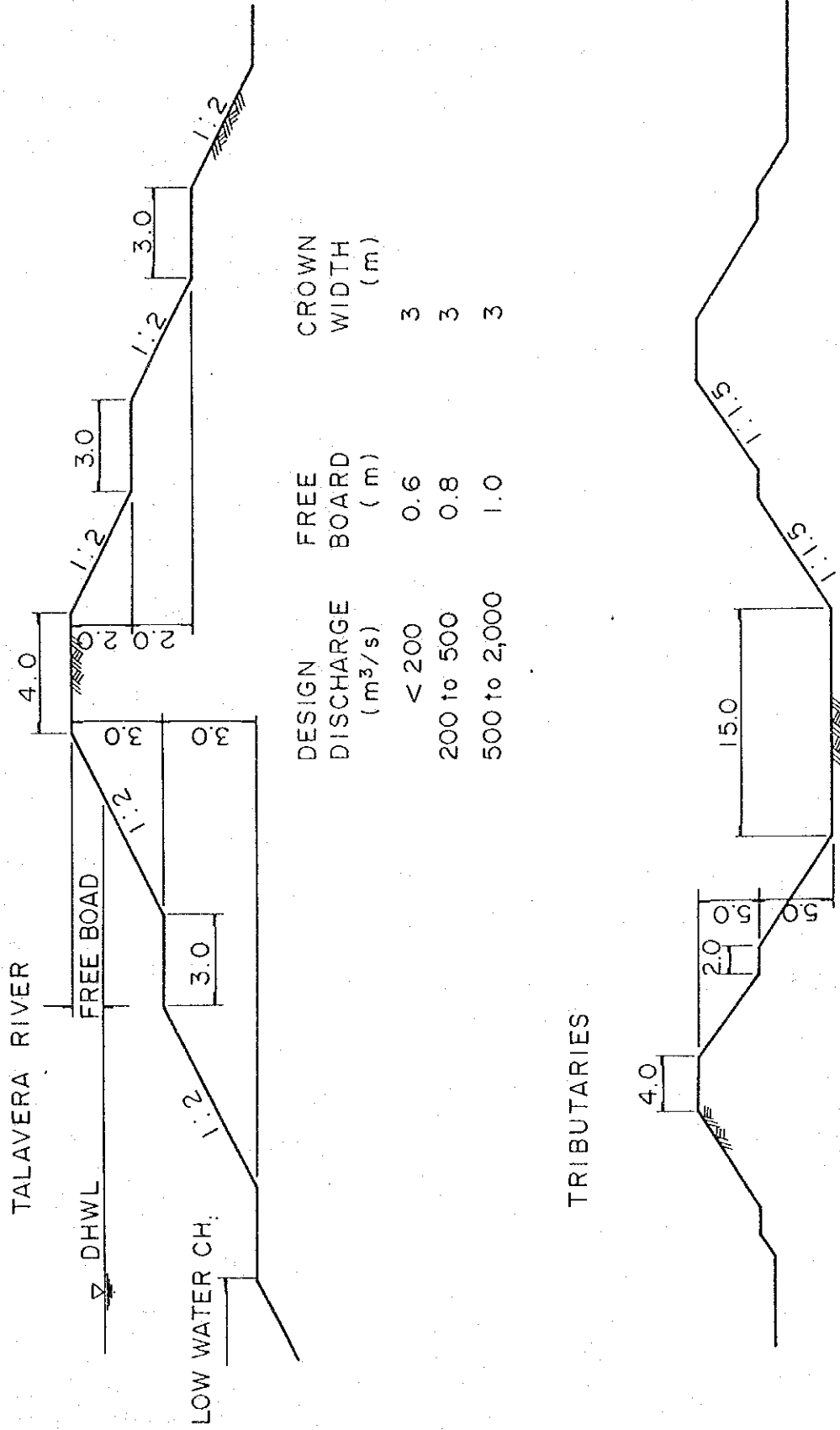


図 18 Talavera 川支川の計画縦断面図

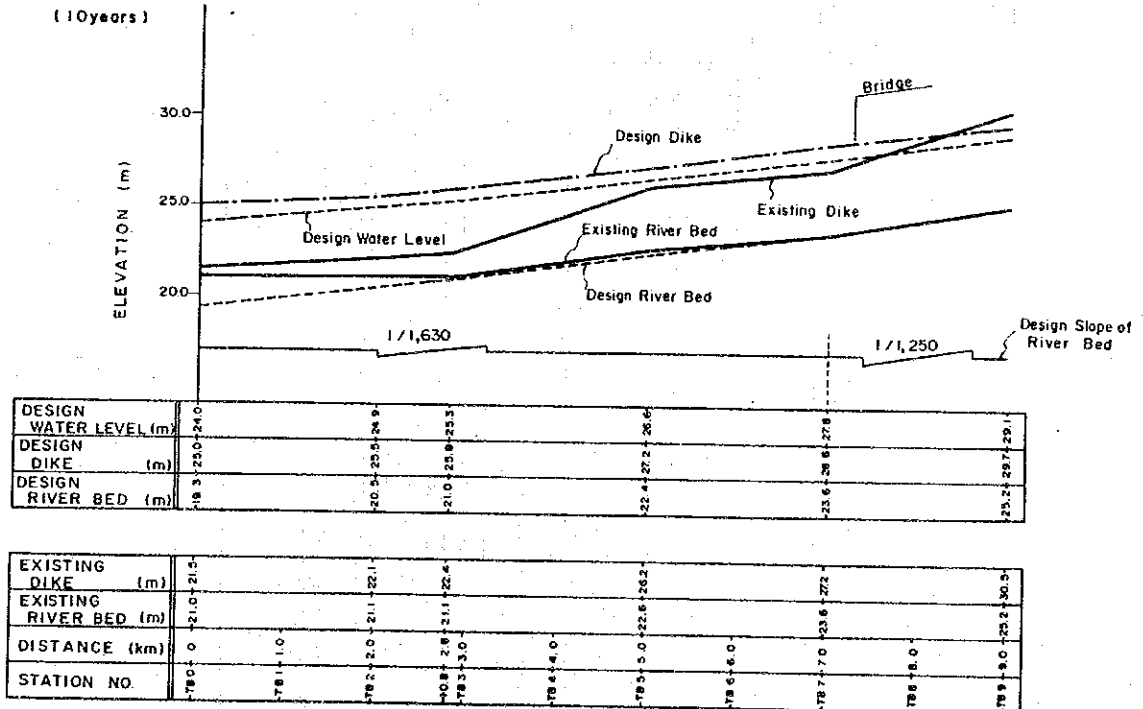
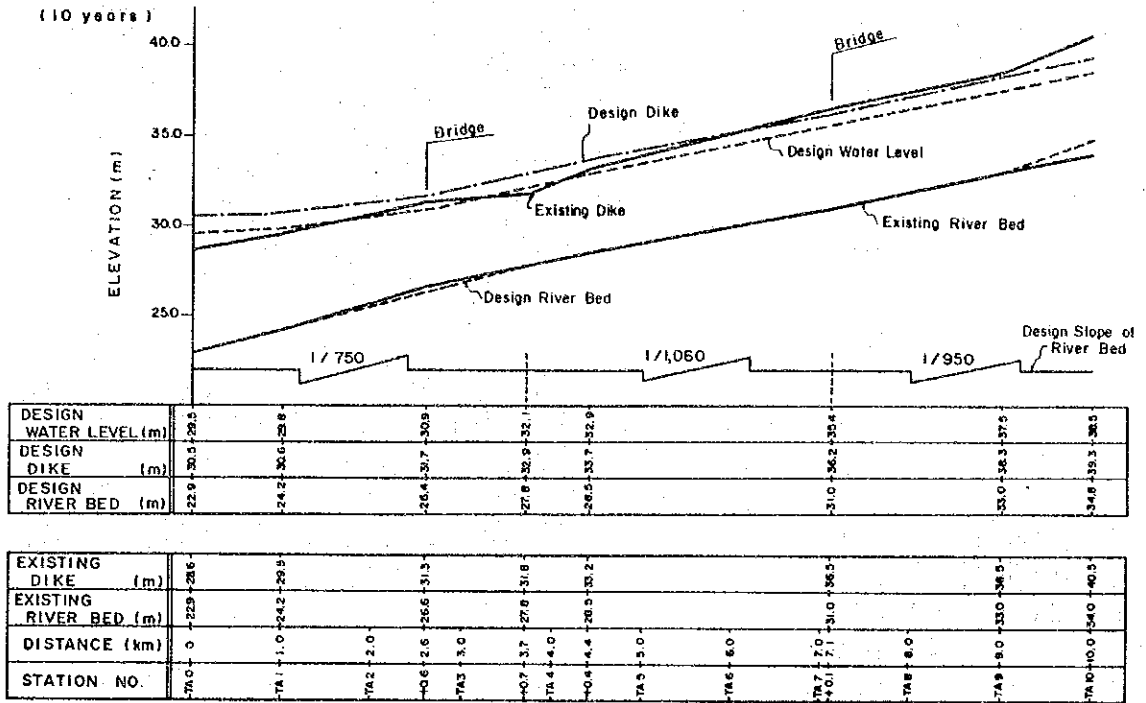


圖 19 計畫UPRIS本部事務所組織圖

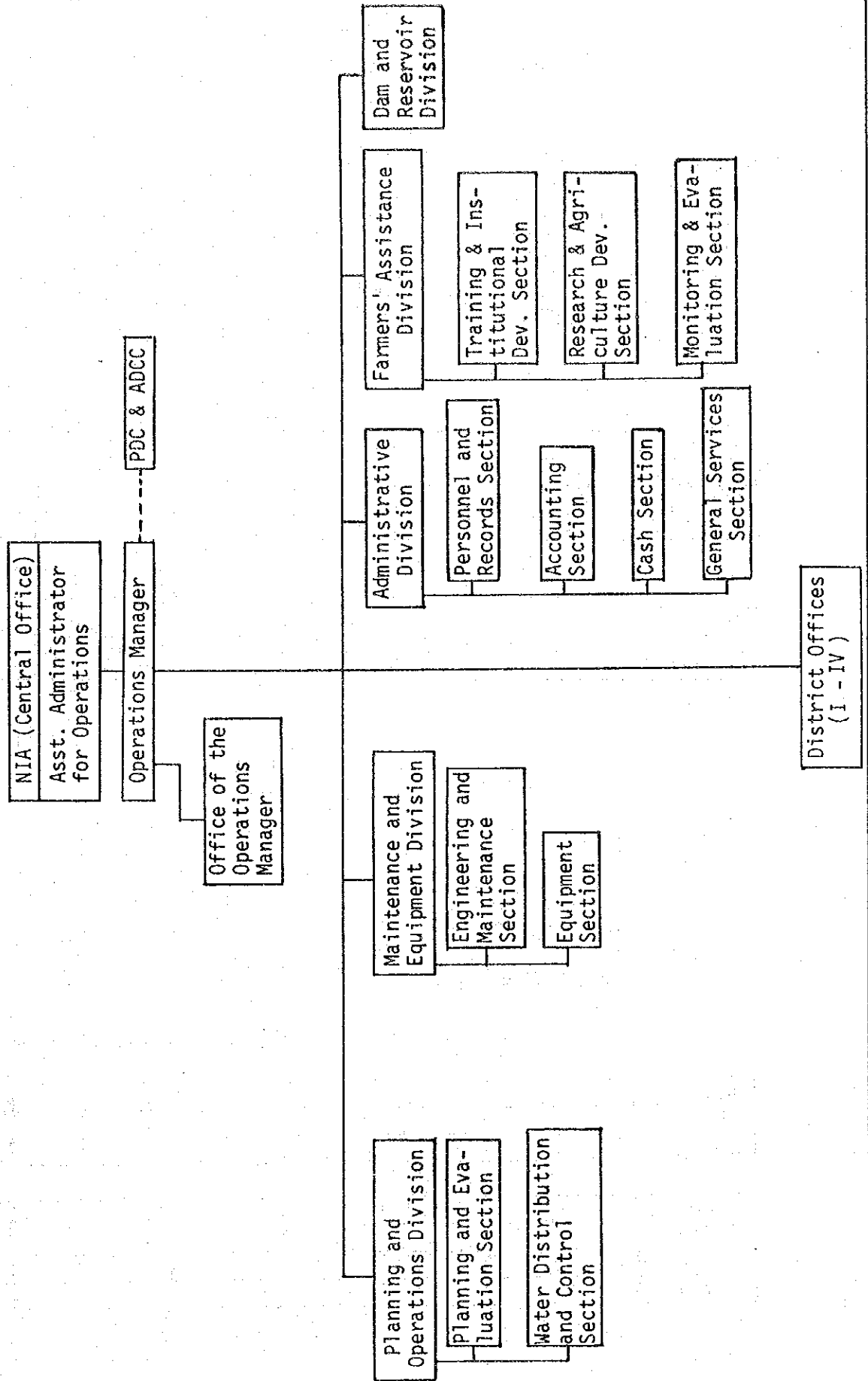


圖 20 計畫UPR I I S現場事務所組織圖

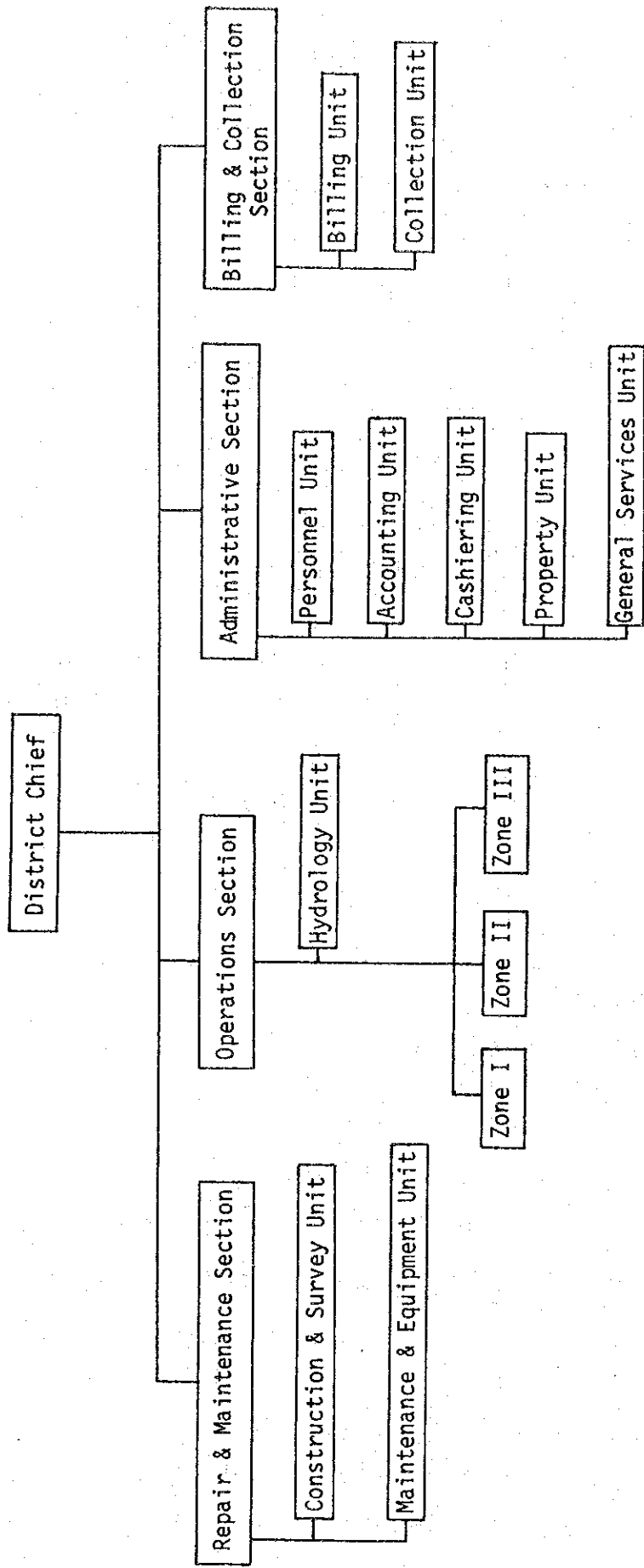




図 2 1 中央監視システム概要図

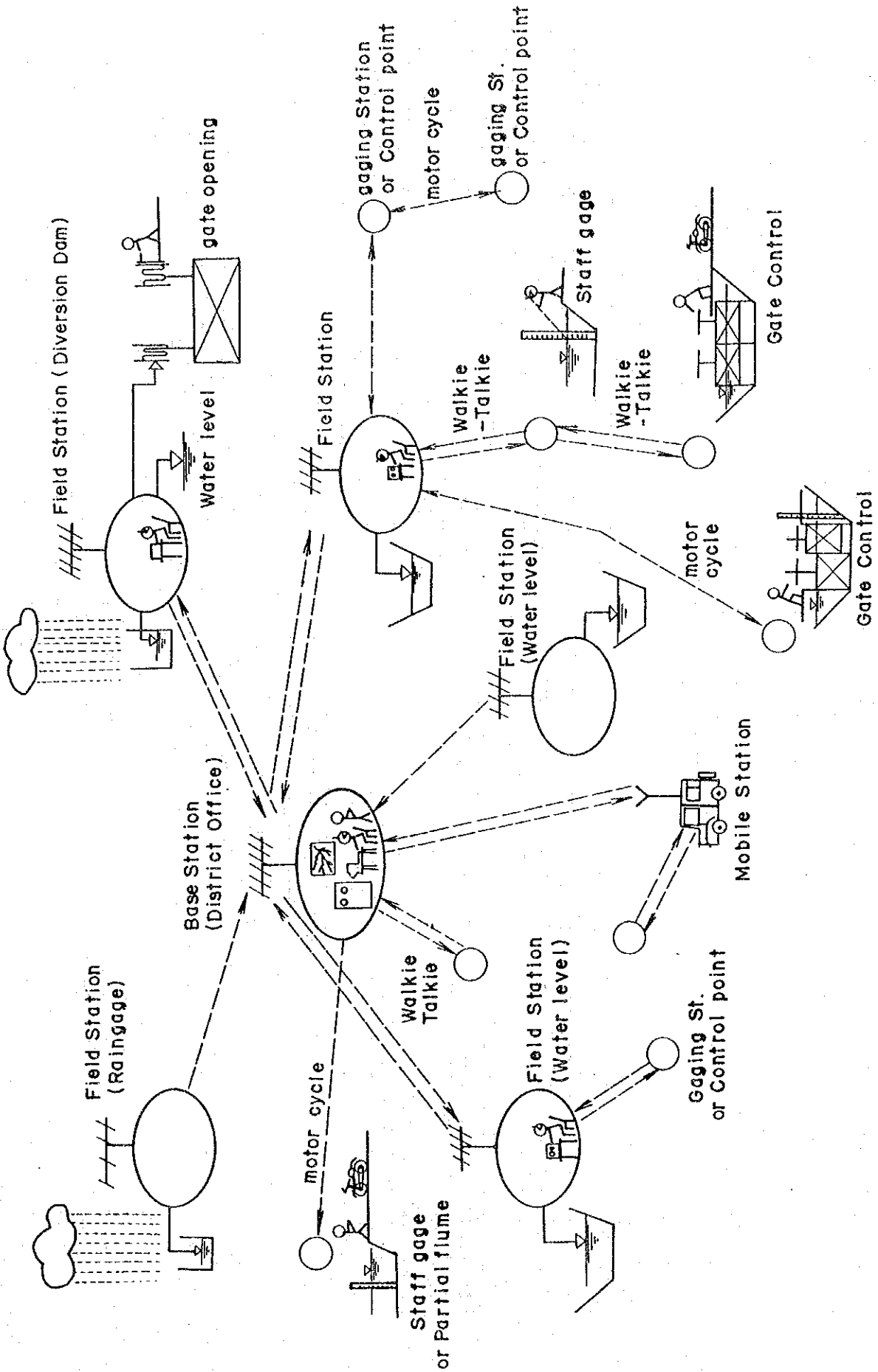
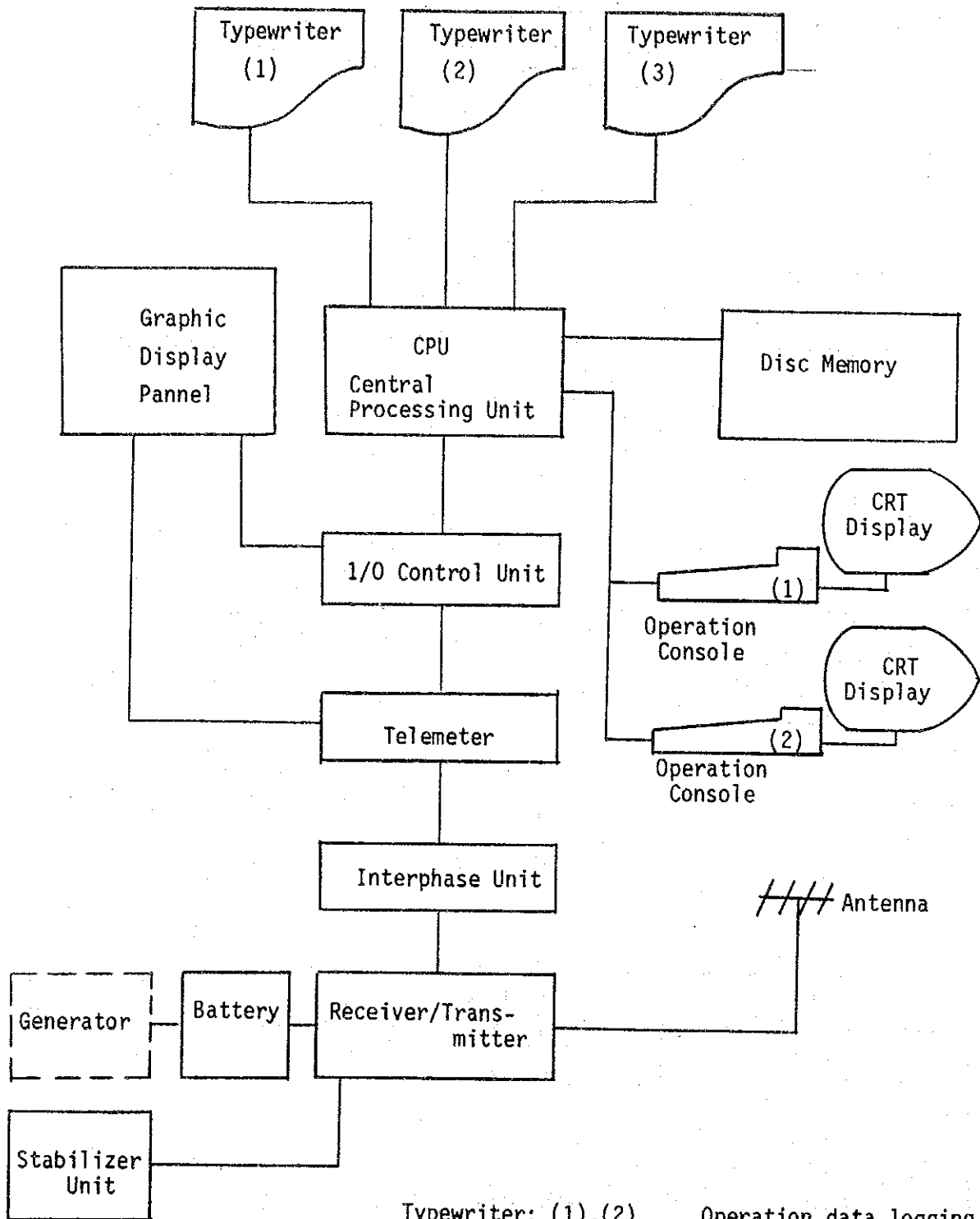


図 2 2 ( 1 ) 中央監視システム各局の装置概要

CENTRAL STATION

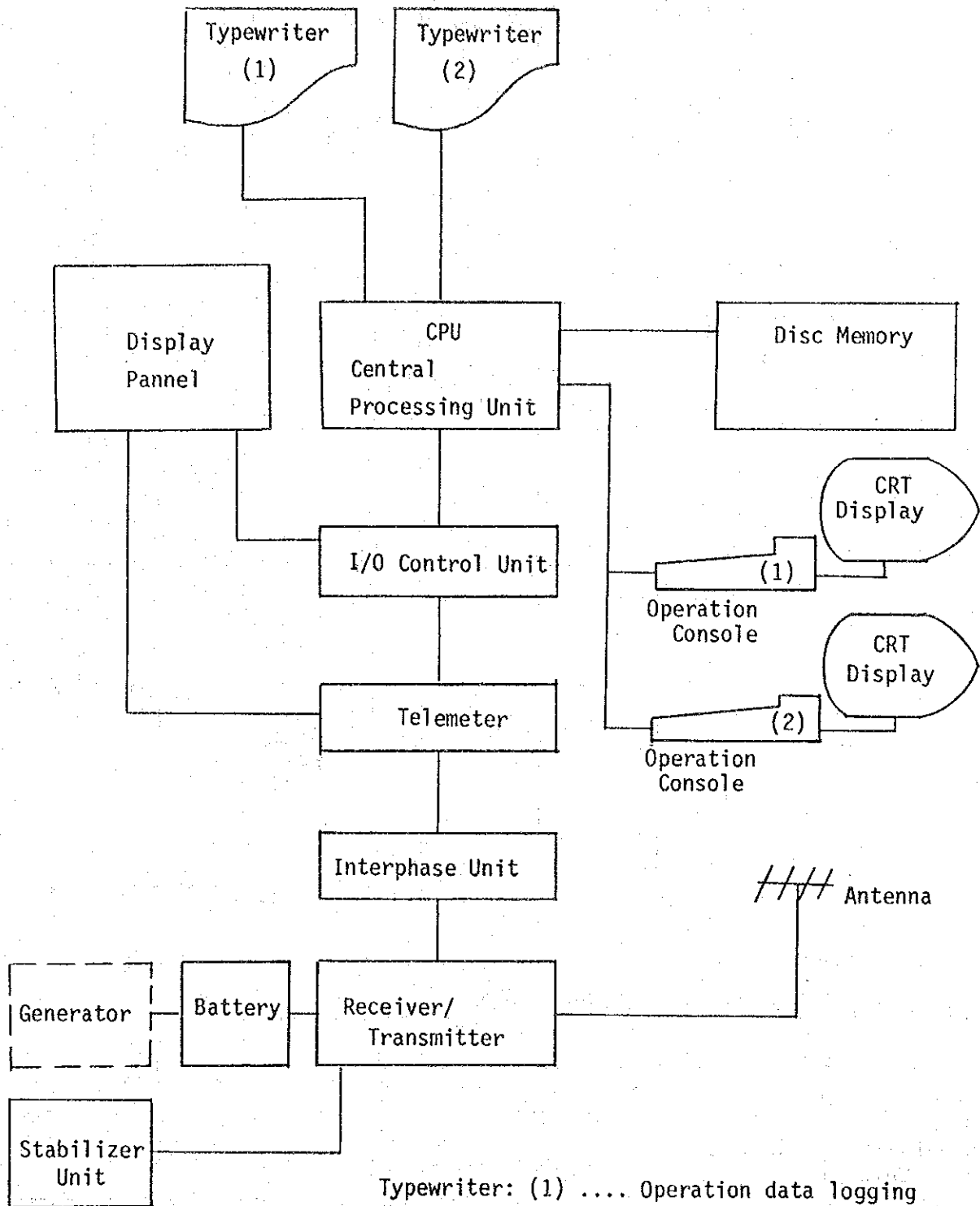


Typewriter: (1),(2) ... Operation data logging  
 (3) ..... Administrative data logging

Operation Console: (1) ..... Water management use  
 (2) ..... Administrative use

図 2 2 ( 2 ) 中央監視システム各局の装置概要

BASE STATION (District Office)



Typewriter: (1) .... Operation data logging  
 (2) .... Administrative data logging

Operation Console : (1) .... Water management use  
 (2) .... Administrative use

図 2 2 ( 3 ) 中央監視システム各局の装置概要

BASE STATION (Dam & Reservoir)

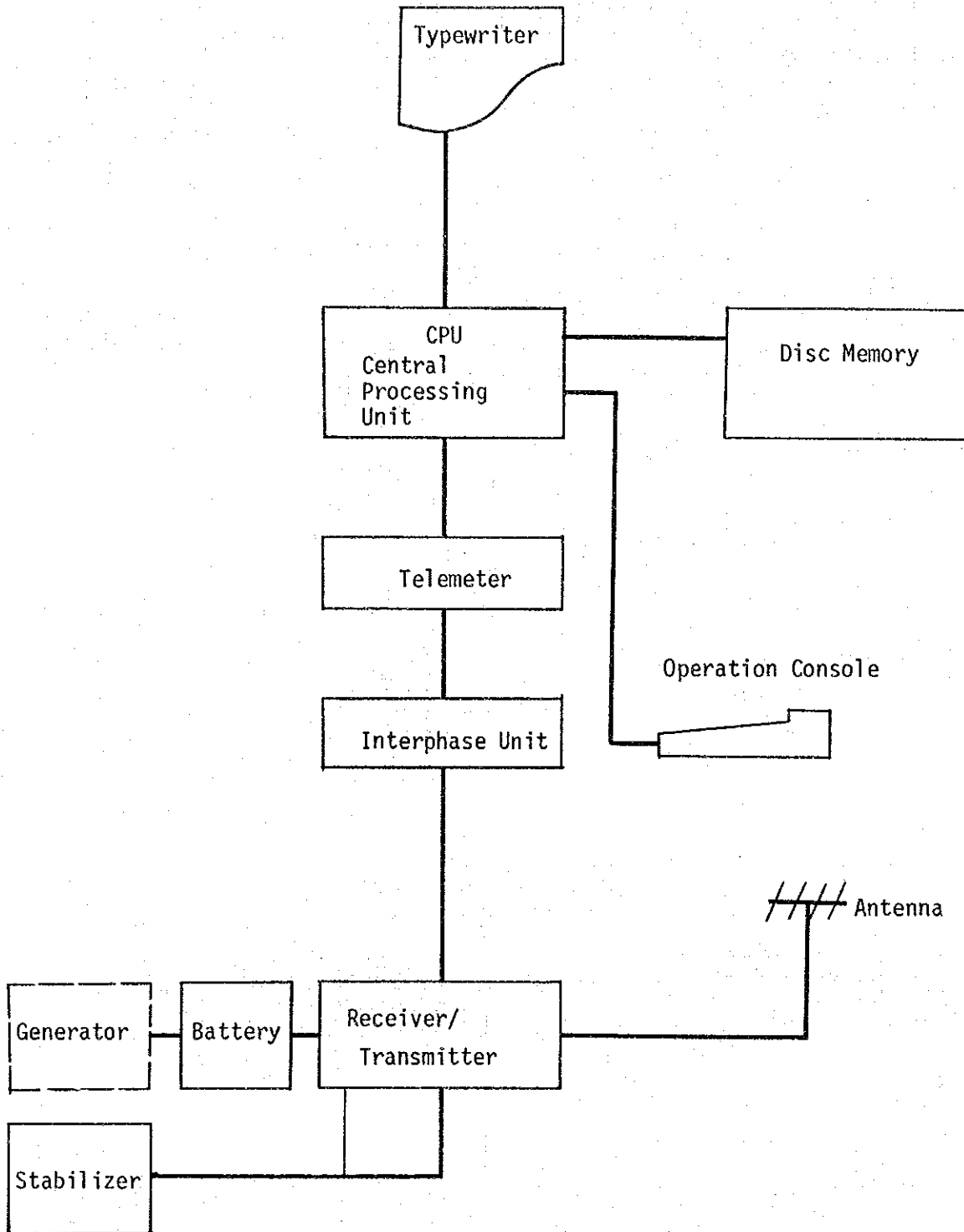
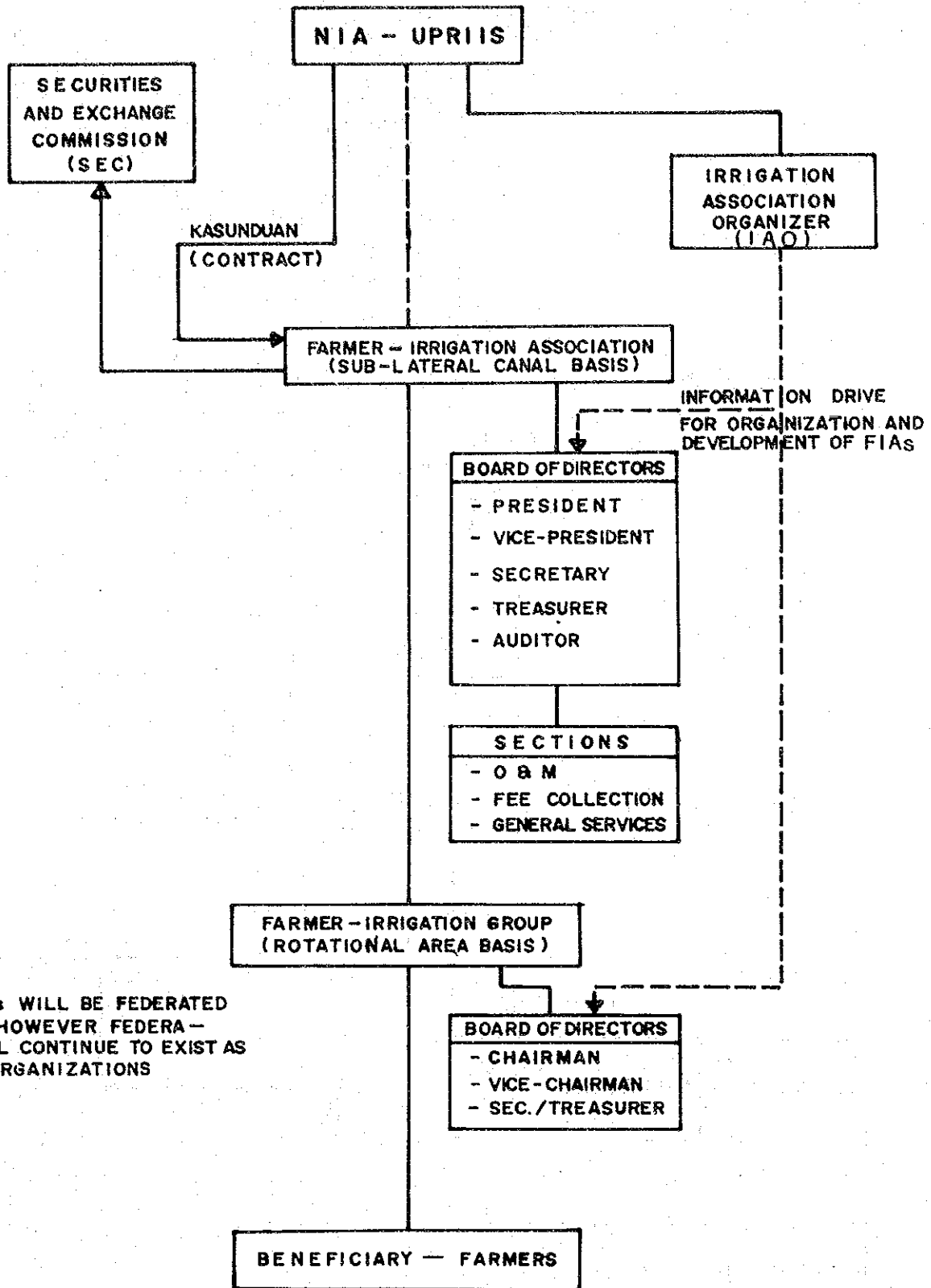


図 2 3 計画農民かんがい組合組織図



**NOTE:**

FIGs WILL BE FEDERATED INTO FIA. HOWEVER FEDERATED FIGs WILL CONTINUE TO EXIST AS "LOOSE" ORGANIZATIONS

图 2 4 事業実施計画表

PREPARATORY WORKS	District	Project Name	Area (x10 <sup>3</sup> ha)	Length (km)	1985	1986	1987	1988	1989	1990	1991	1992	1993	1994	
					Start	Start	Start	Start	Start	Start	Start	Start	Start	Start	Start
District I	SAE TRIS Upper TRIS Lower	AREA	0.8												
		CANAL	3.9												
		AREA	9.8												
		AREA	12.2												
District II	RMA LTRIS VGIS MCIS PRIS	CANAL	2.6												
		AREA	2.7												
		AREA	2.4												
		AREA	5.0												
		AREA	13.6												
District III	PBRIS Pro PLATERO ALIAGA PCCA PBRIS Ext'n	CANAL	10.4												
		CANAL	1.0												
		AREA	5.3												
		CANAL	1.3												
		CANAL	13.1												
		CANAL	25.6												
		AREA	15.8												
District IV	PENRIS Pro. PENRIS Ext'n	CANAL	41.9												
		CANAL	13.8												
		AREA	21.6												
		AREA	5.5												
River Improvement Drainage Improvement	TALAVERA		43.5												
	SAN ANTONIO		53.0												
Central Monitoring System	Control Office & Diversion Dam District I District II District III District IV	NORTH CANDABA		46.0											
		Control Office													
		& Diversion													
		Dam													







JICA