

## ***FIGURES***

Fig. 1(1) GENERAL LAYOUT OF DISTRICT  
DISTRICT I

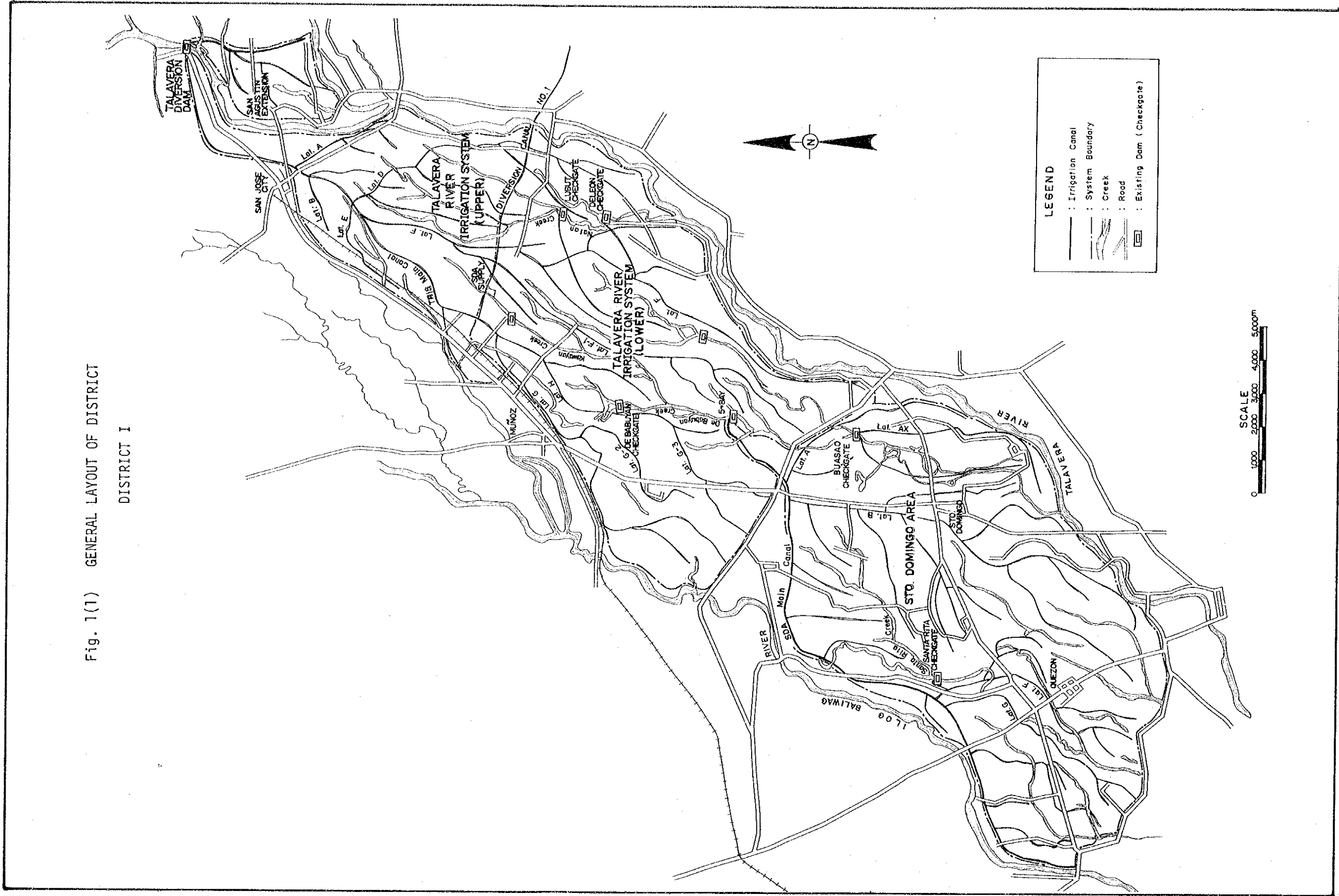


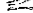




Fig. 1(2) GENERAL LAYOUT OF DISTRICT  
DISTRICT II

**LEGEND**

-  : Irrigation Canal
-  : System Boundary
-  : Creek
-  : Road
-  : Existing Dam (Checkgate)

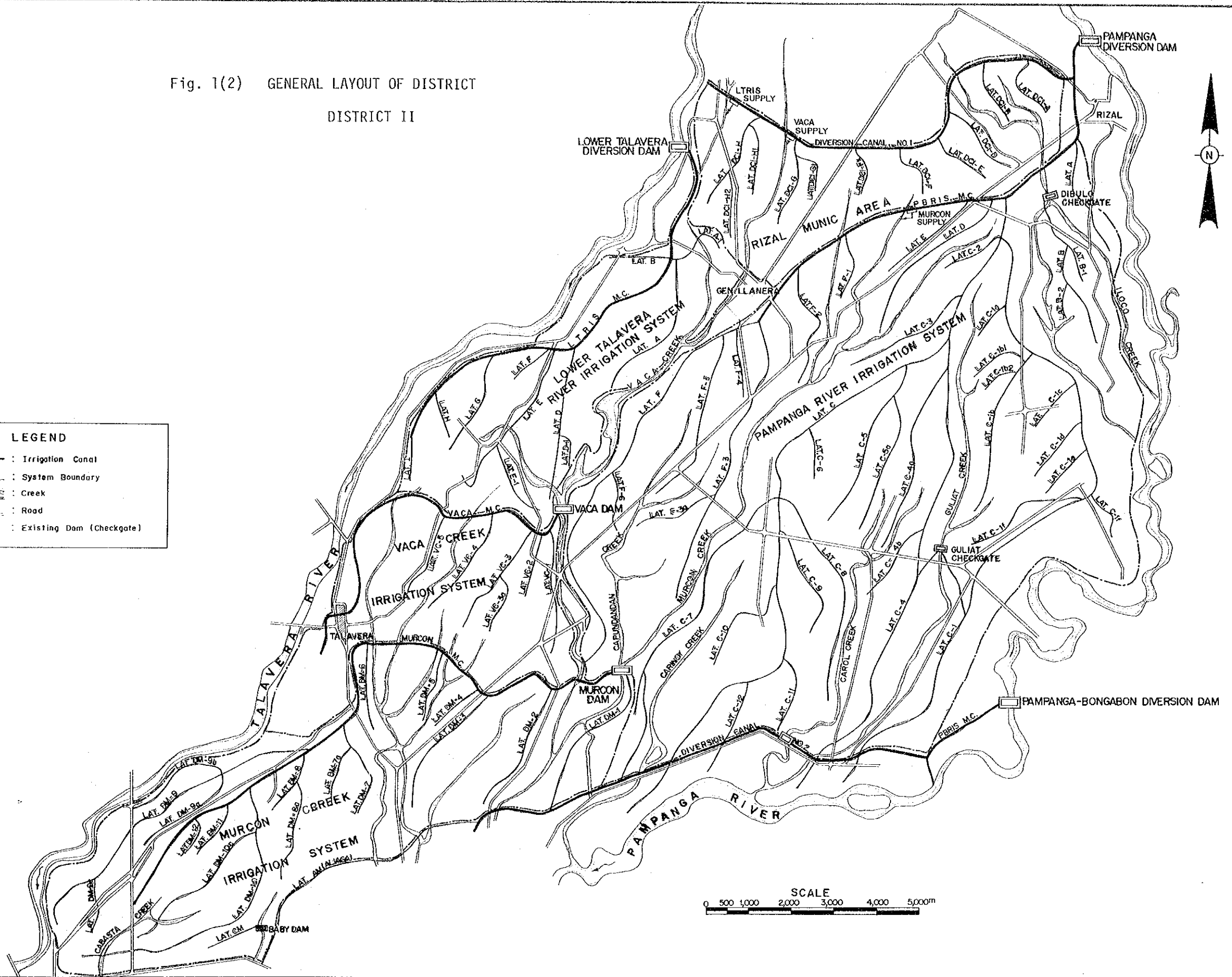


Fig. 1(3) GENERAL LAYOUT OF DISTRICT  
DISTRICT III

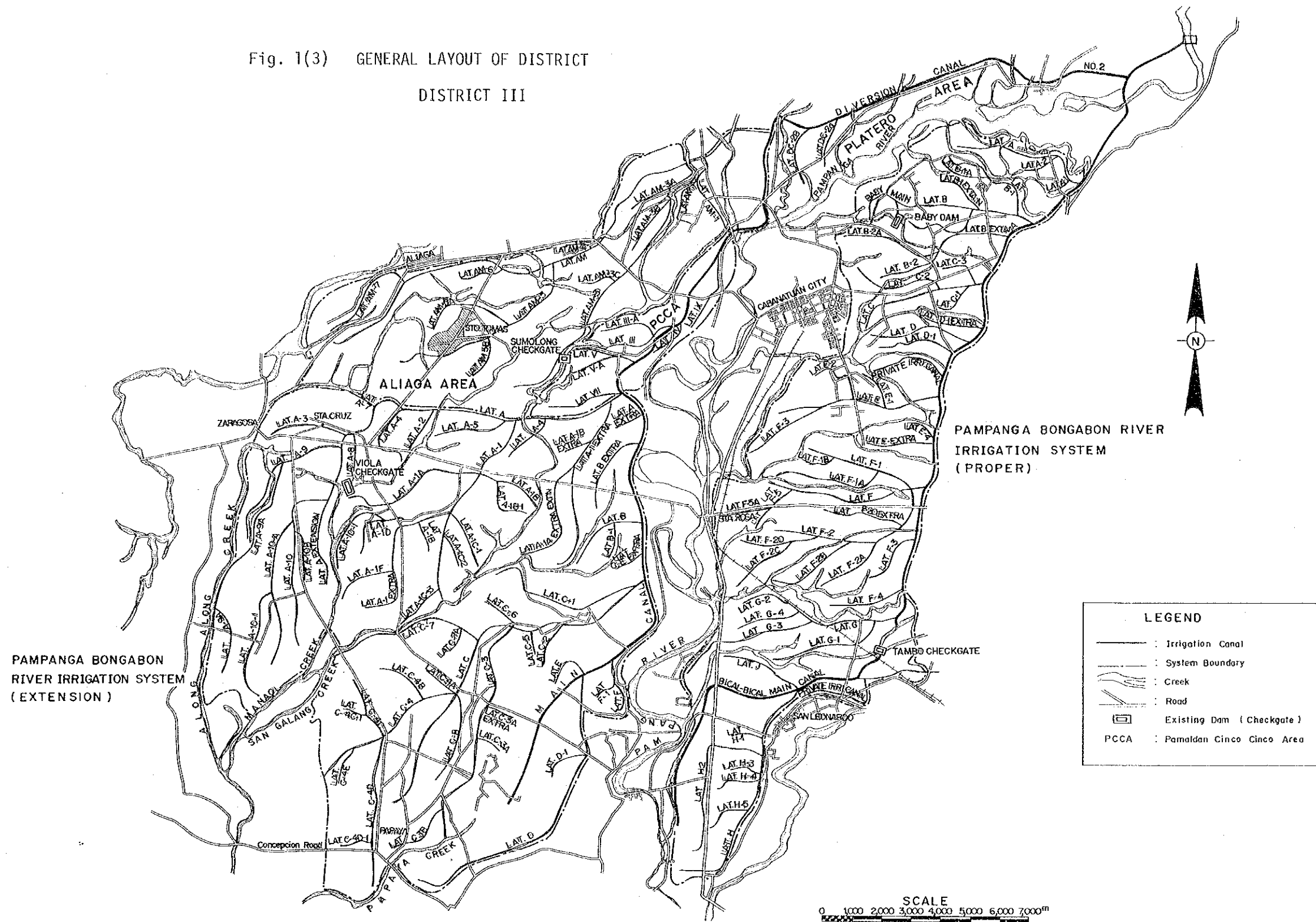


Fig. 1(4) GENERAL LAYOUT OF DISTRICT  
DISTRICT IV

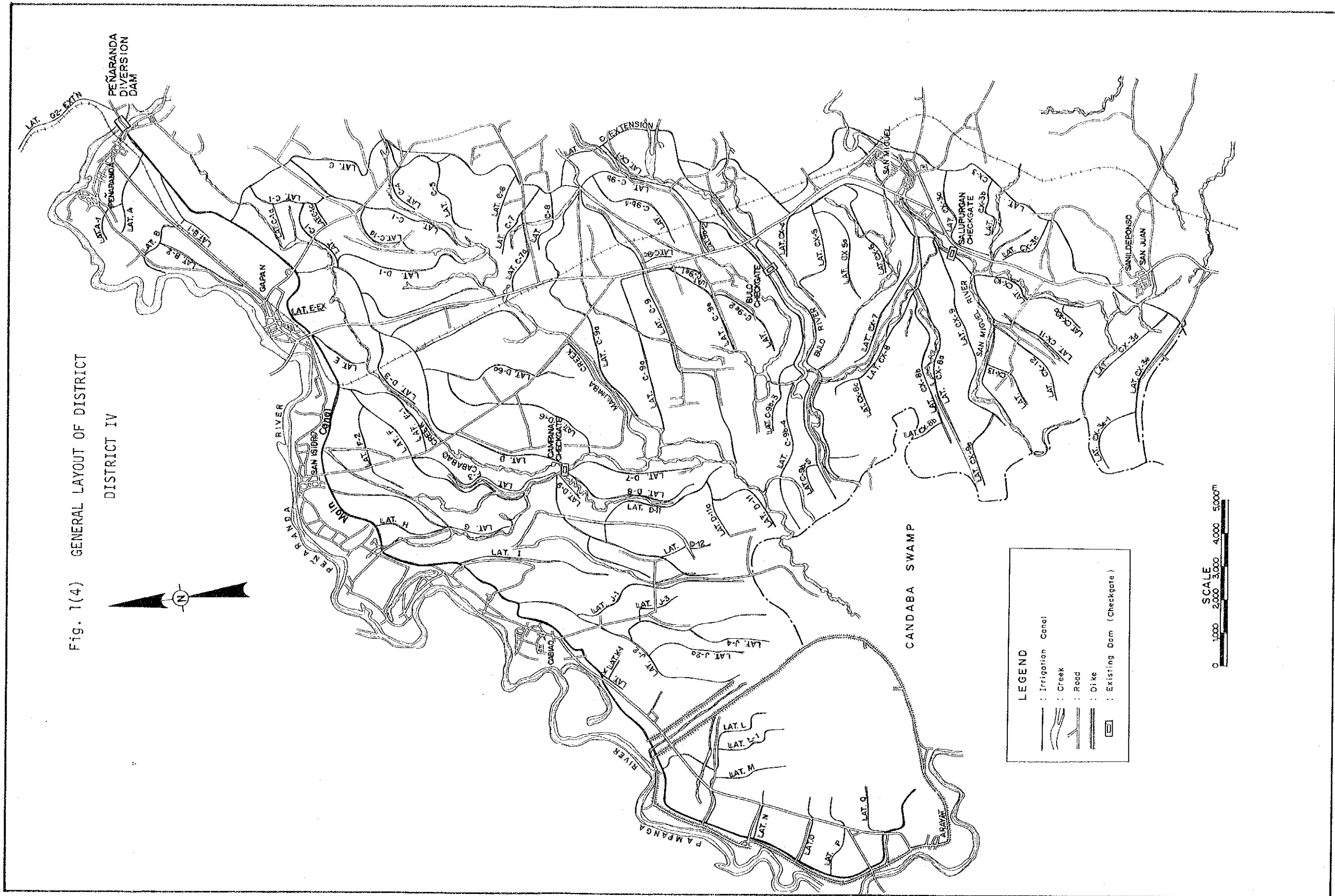


Fig. 2 WATER BALANCE AT PANTABANGAN DAM

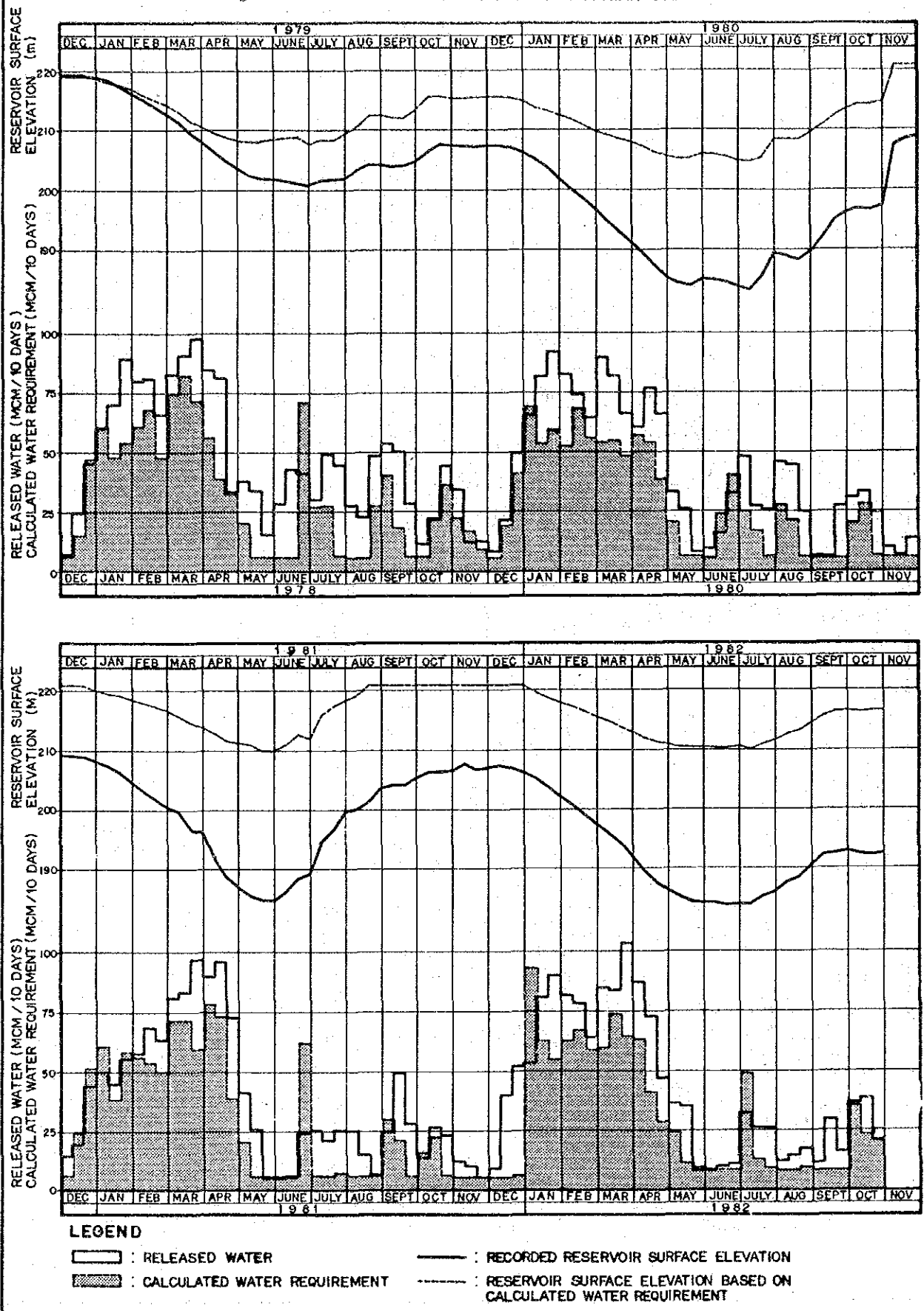
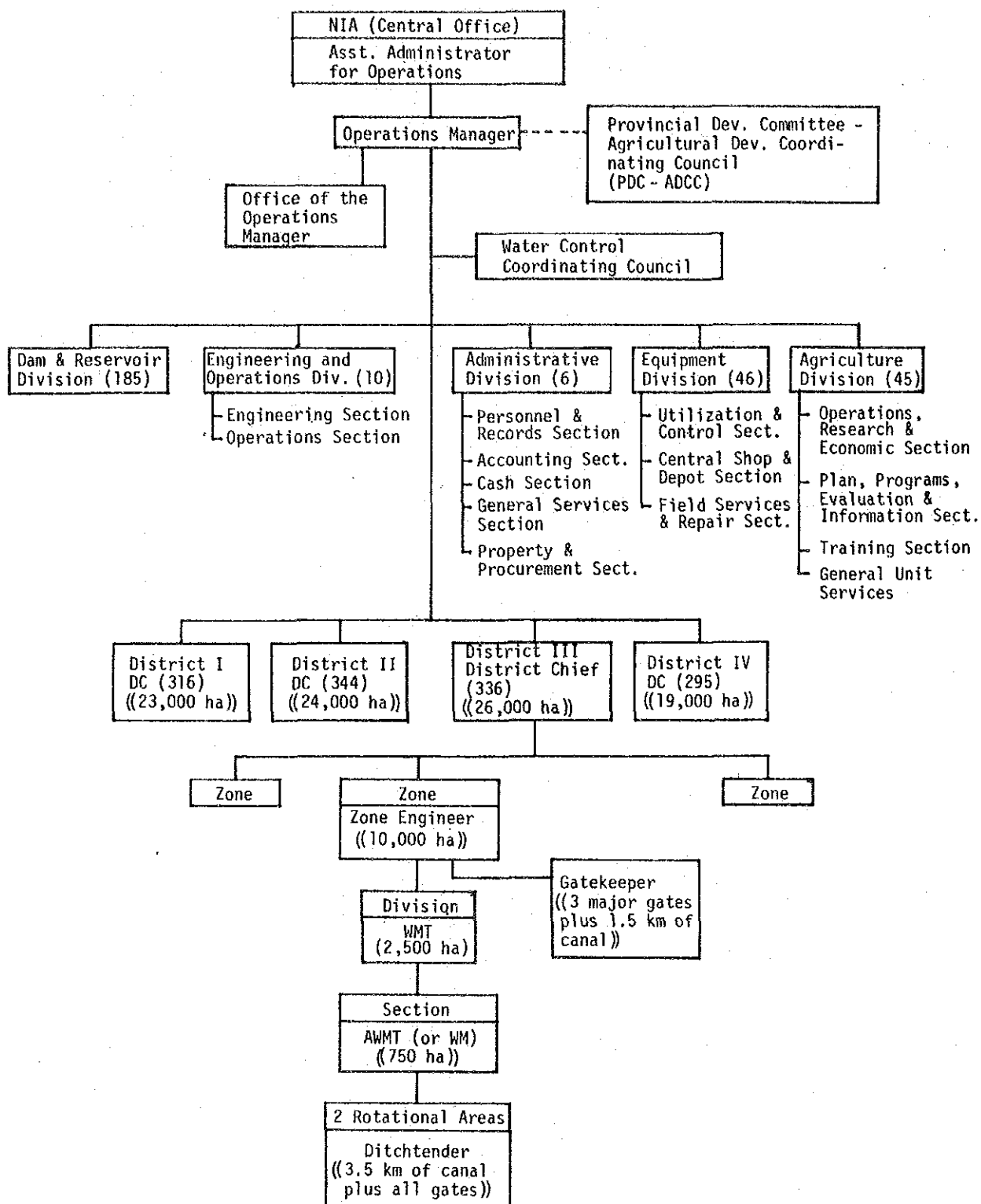




Fig. 4 ORGANIZATION STRUCTURE IN UPRIS OFFICE

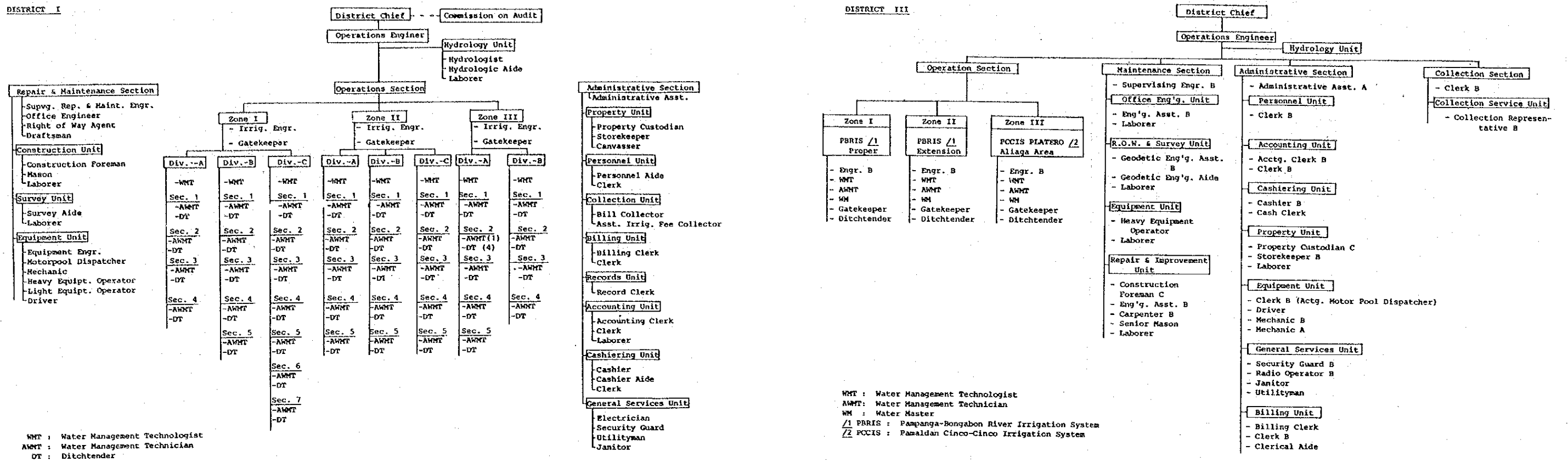


Remarks: Figures in ( ) are numbers of staff including permanent, temporary and daily personnel (as of July 1983).

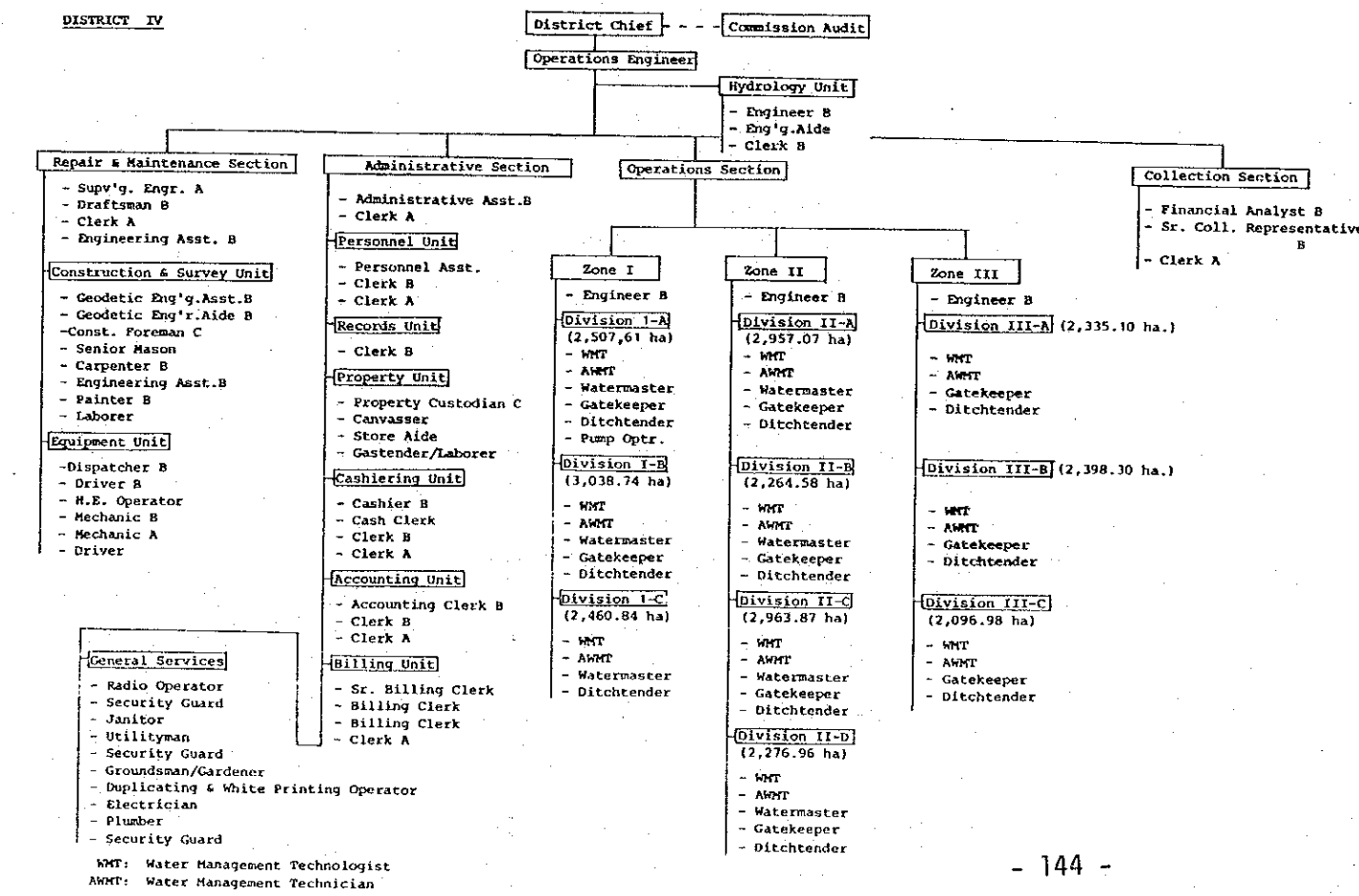
Figures in (( )) are planted area (ha) and work standards.



Fig. 5 ORGANIZATIONAL CHART OF DISTRICT I, II, III & IV



WMT : Water Management Technologist  
 AWMT : Water Management Technician  
 WM : Water Master  
 /1 PBRIS : Pampanga-Bongabon River Irrigation System  
 /2 PCCIS : Pamaldan Cinco-Cinco Irrigation System



WMT : Water Management Technologist  
 AWMT : Water Management Technician

Fig. 6 CONSTRAINTS IN WATER MANAGEMENT AND CONTROL

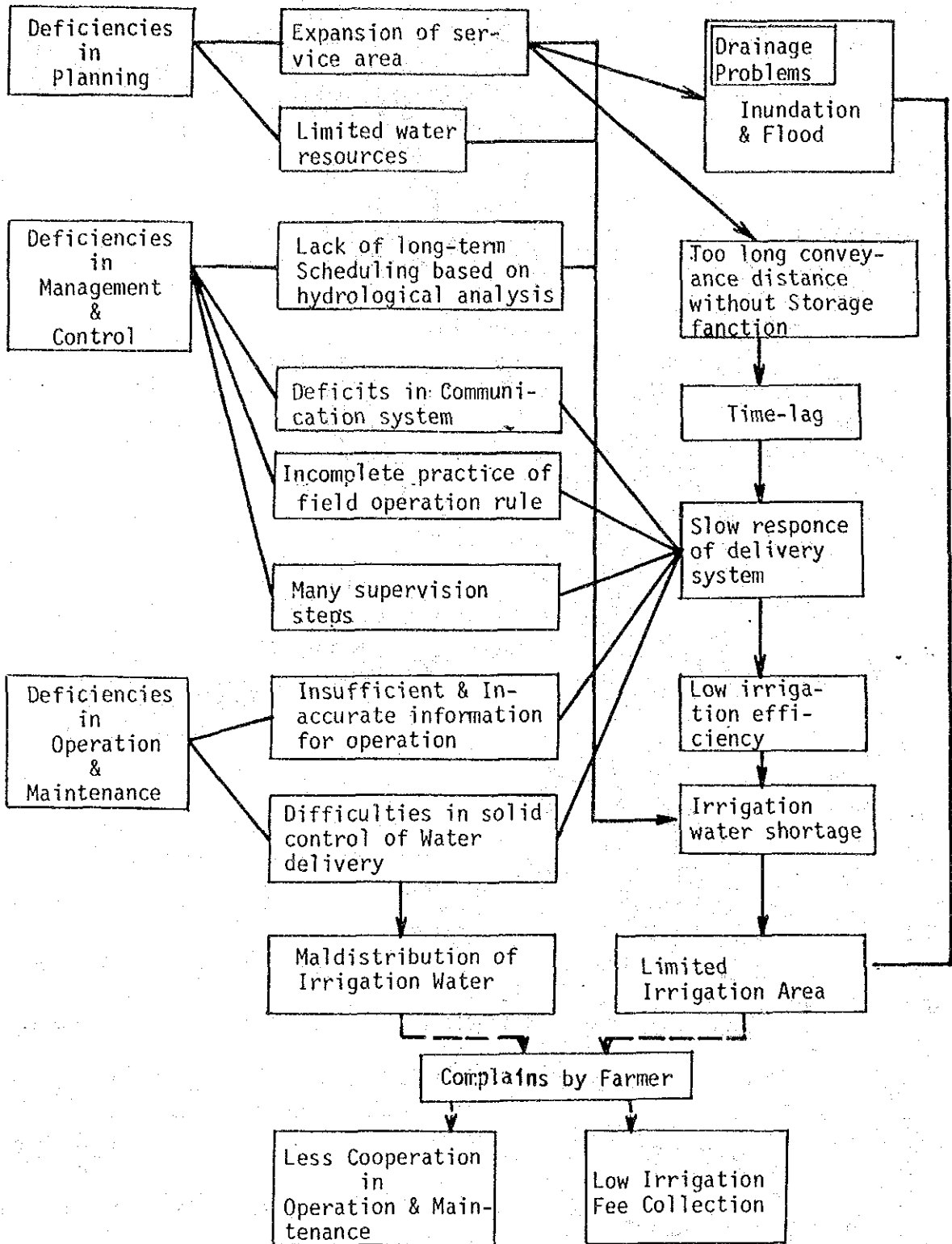


Fig. 7 RADIO NETWORK SYSTEM

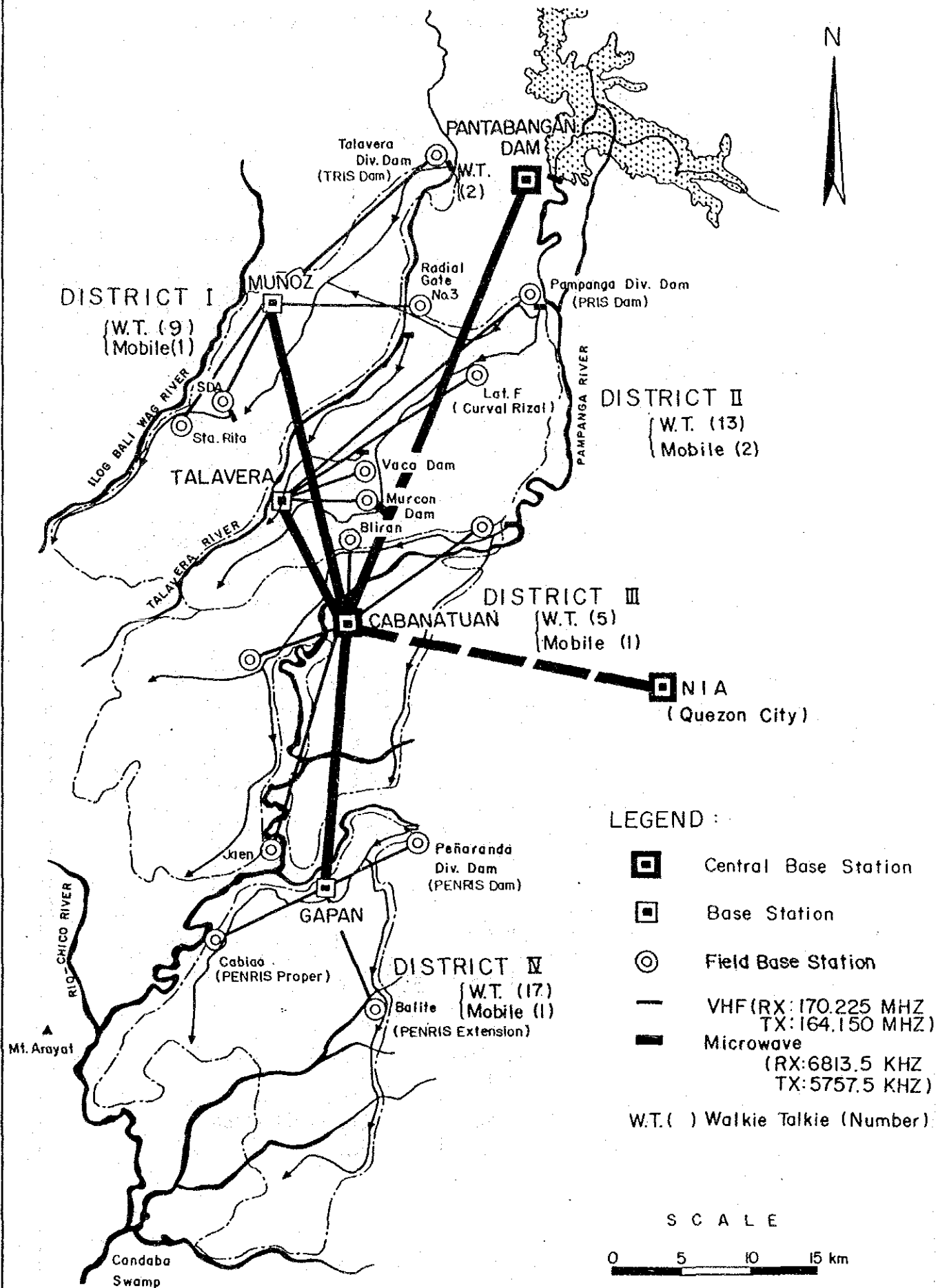
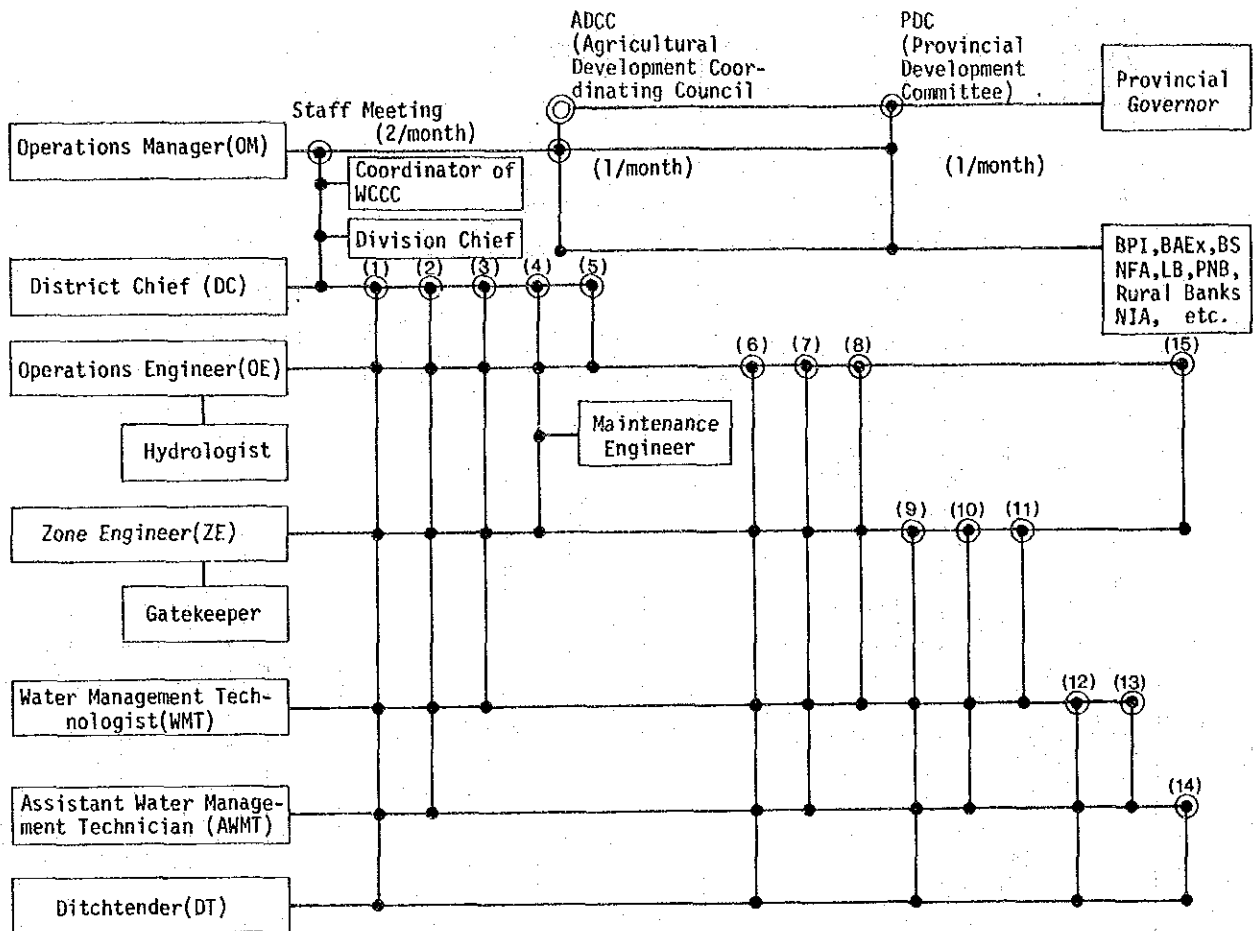


Fig. 8 MEETING SYSTEM FOR OPERATION AND MAINTENANCE IN UPRIS



Remarks: (1) - (15) Kinds of meeting/●Chairman/○Honorable Chairman/  
● Attendant

Meeting	FREQUENCY OF THE MEETING			
	I	II	III	IV
(1)	2/month	4/year	Occasional	Occasional (min. 2/year, Collection season)
(2)	2/week + 2/month (Pay day)	Occasional	1/month + occasional	2/month (Pay day)
(3)	-do-	1/month	2/month (Pay day)	2/month 2nd 84 monday)
(4)	2/week	1/week	1/week	2/month
(5)	Occasional	Occasional	Occasional	Occasional
(6)	"	4/month	"	"
(7)	2/week	Occasional	1/month	"
(8)	Occasional	"	2/month (Pay day)	"
(9)	4/month	1/month	1/month	"
(10)	Occasional	Occasional	"	2/month
(11)	"	"	2/month (Pay day)	"
(12)	2-3/month	4/month	4/month	1 or 2/month
(13)	Occasional	"	Occasional	Occasional
(14)	"	Occasional	4/month	1 or 2/month
(15)	"	"	4/month	Occasional*

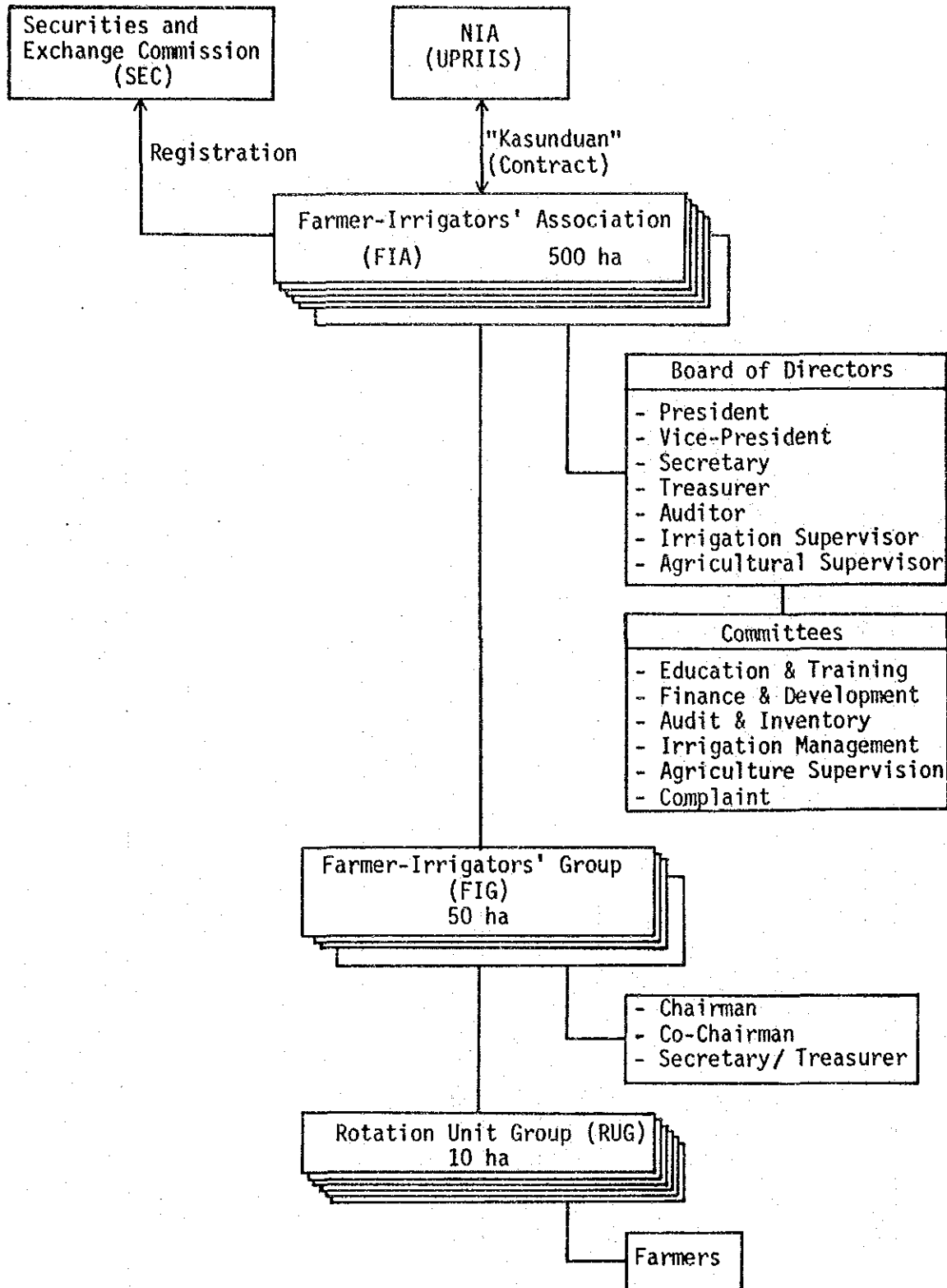
\* Including Hydrologist and Gatekeeper

N.B. - In principle, meeting places are as follows:

- OM & DC Level - Office
- OE, ZE & WMT Level - Office or field
- WMT, AWMT & DT Level - Field

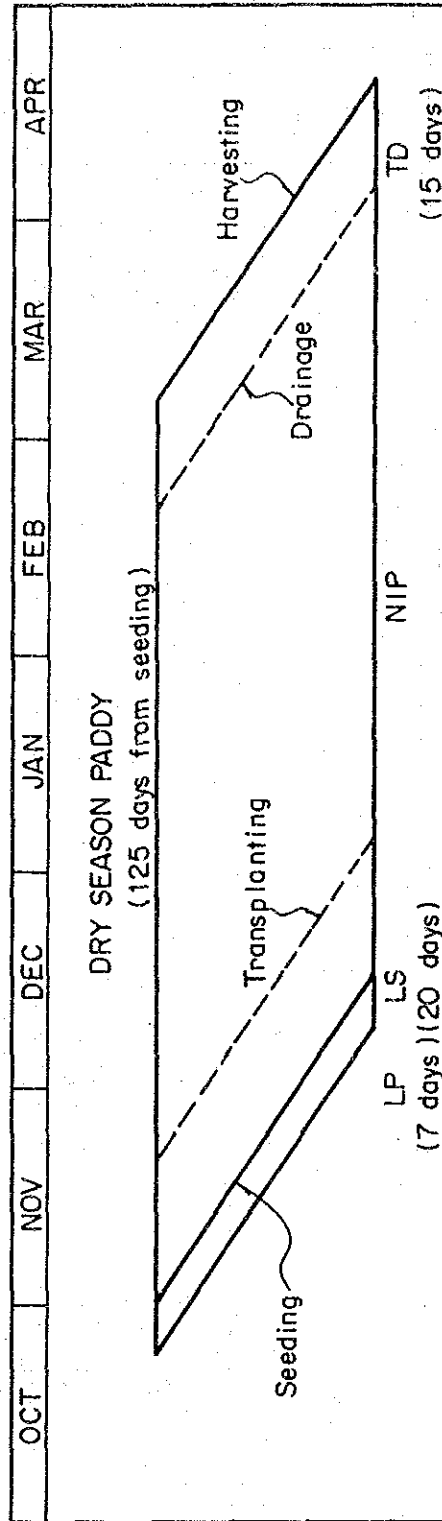
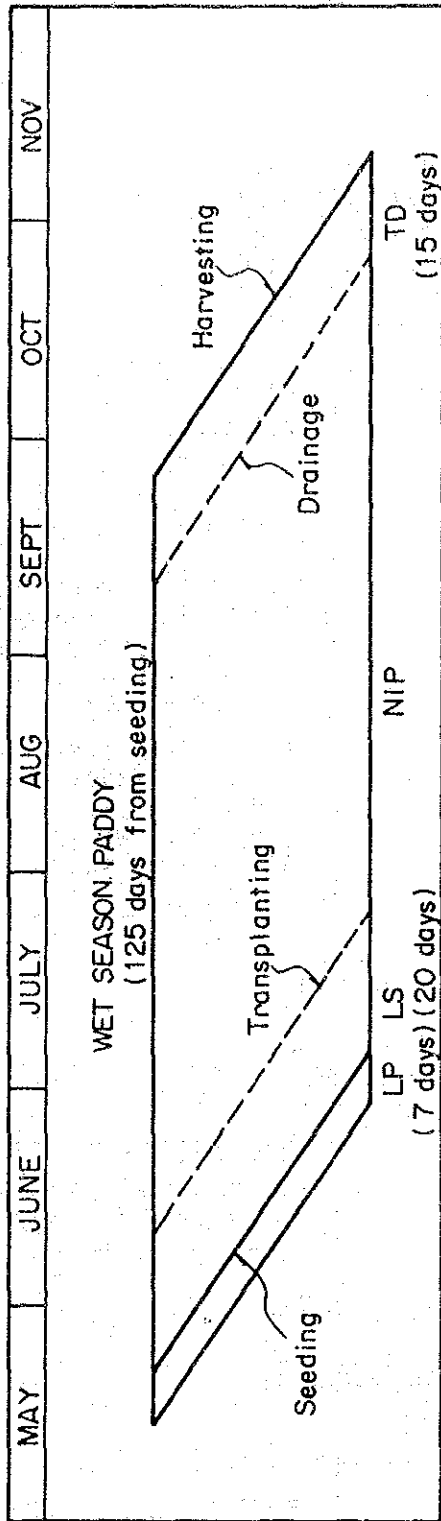


Fig. 10 ORGANIZATIONAL STRUCTURE OF UPRIS IRRIGATION ASSOCIATION



Remarks: One FIA consists of 8 to 10 FIGs in general.  
One FIG consists of 4 to 5 RUGs in general.

Fig. 11 PROPOSED CROPPING PATTERN (DISTRICT I, II, III)



LP : Land Preparation, NIP : Normal Irrigation Period  
 LS : Land Soaking TD : Terminal Drainage

Note : Seeding in District IV is started 15 days before commencement of seeding in other District.

Fig. 12 IRRIGATION DIAGRAM INCLUDING RE-USE POINTS

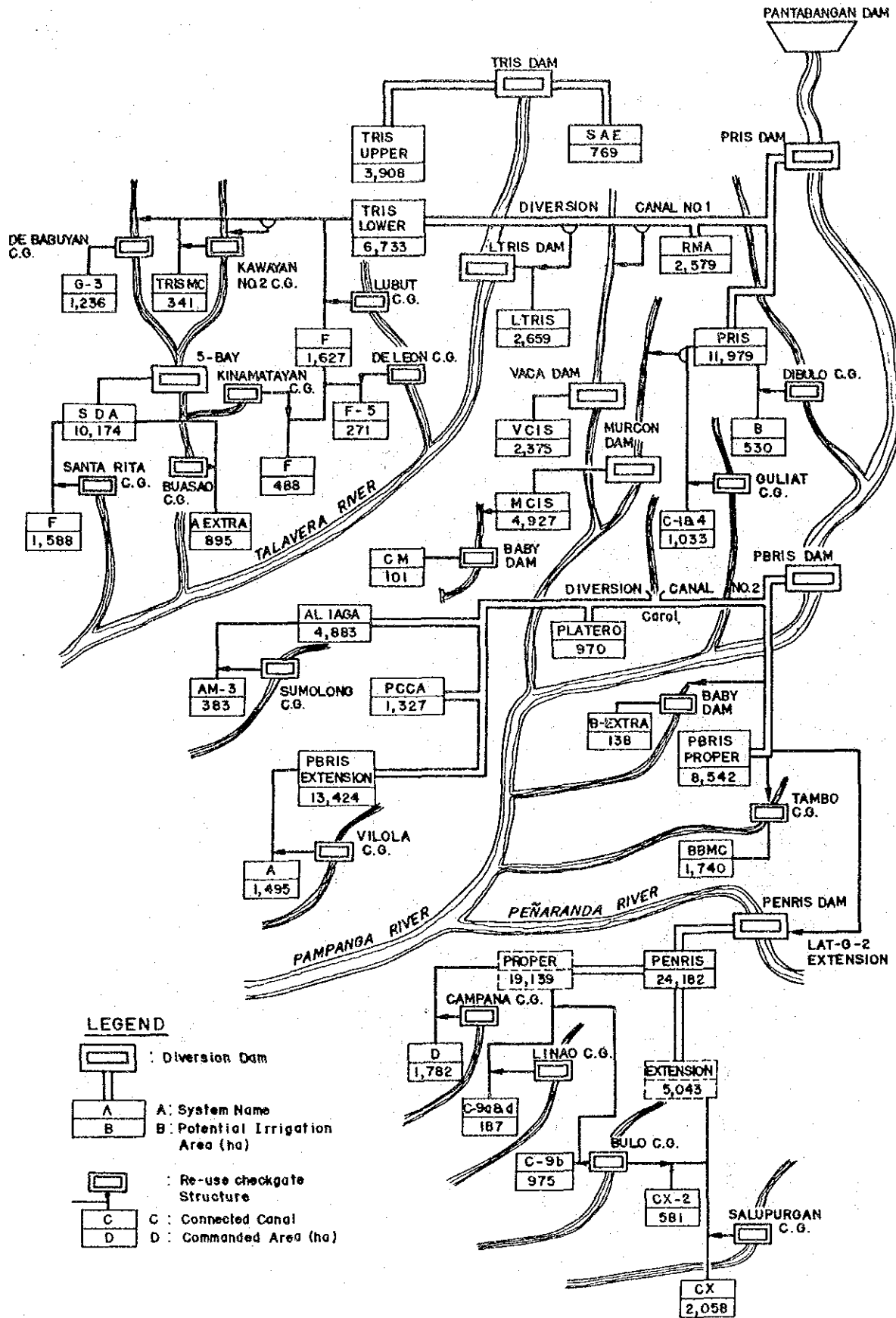




Fig. 13 INUNDATION AREA IN SAN ANTONIO SWAMP



LEGEND

- Boundary of catchment area
- - - - - Boundary of PBRIS PROPER
- ~~~~~ Contour
- ⑤ River block No.
- ← Overflow point
- ▨ Inundation Area (Present condition)
- ▩ Inundation Area (Improved condition)

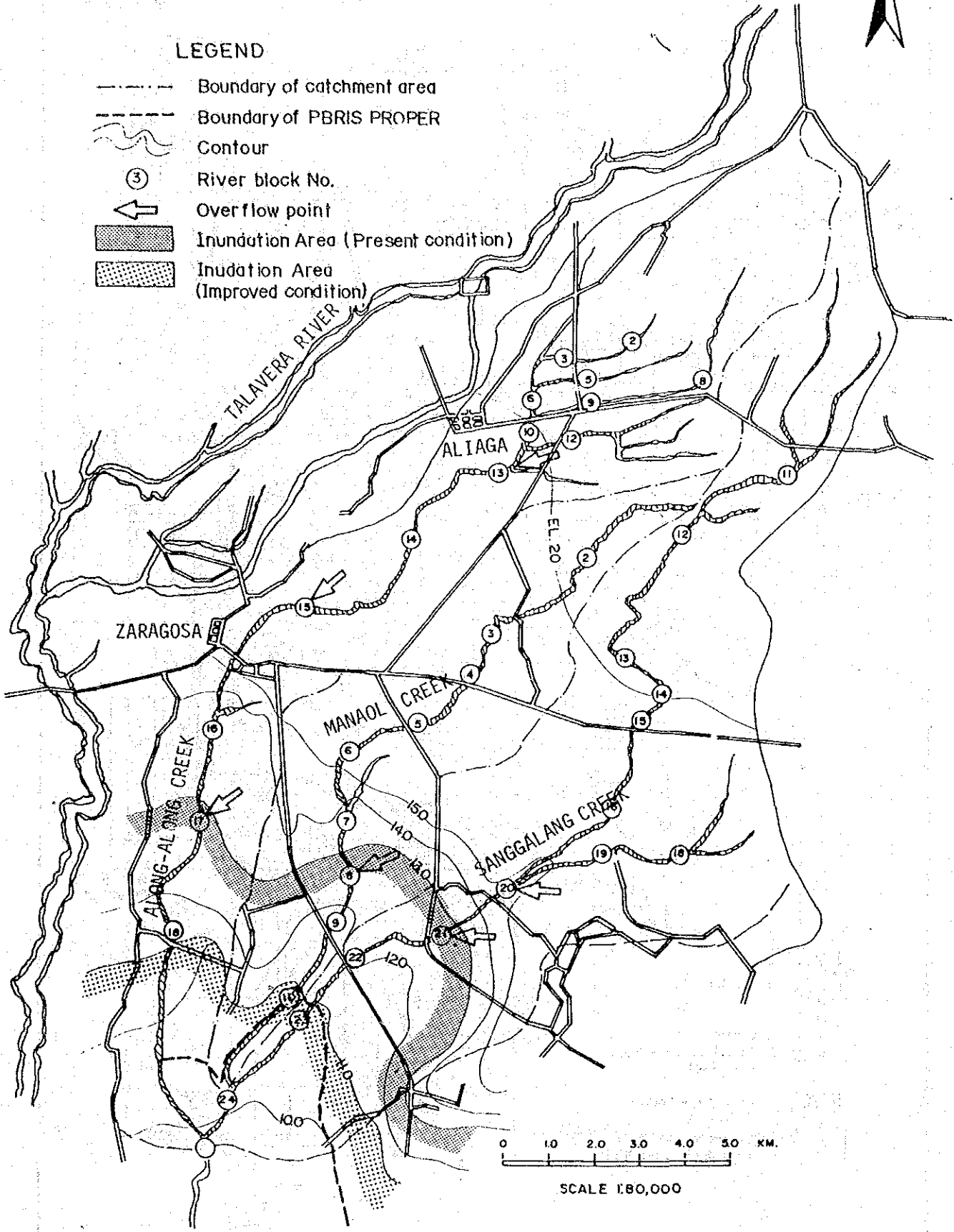


Fig. 14 INUNDATION AREA IN NORTH CANDABA SWAMP  
 — Present and Improved Condition —

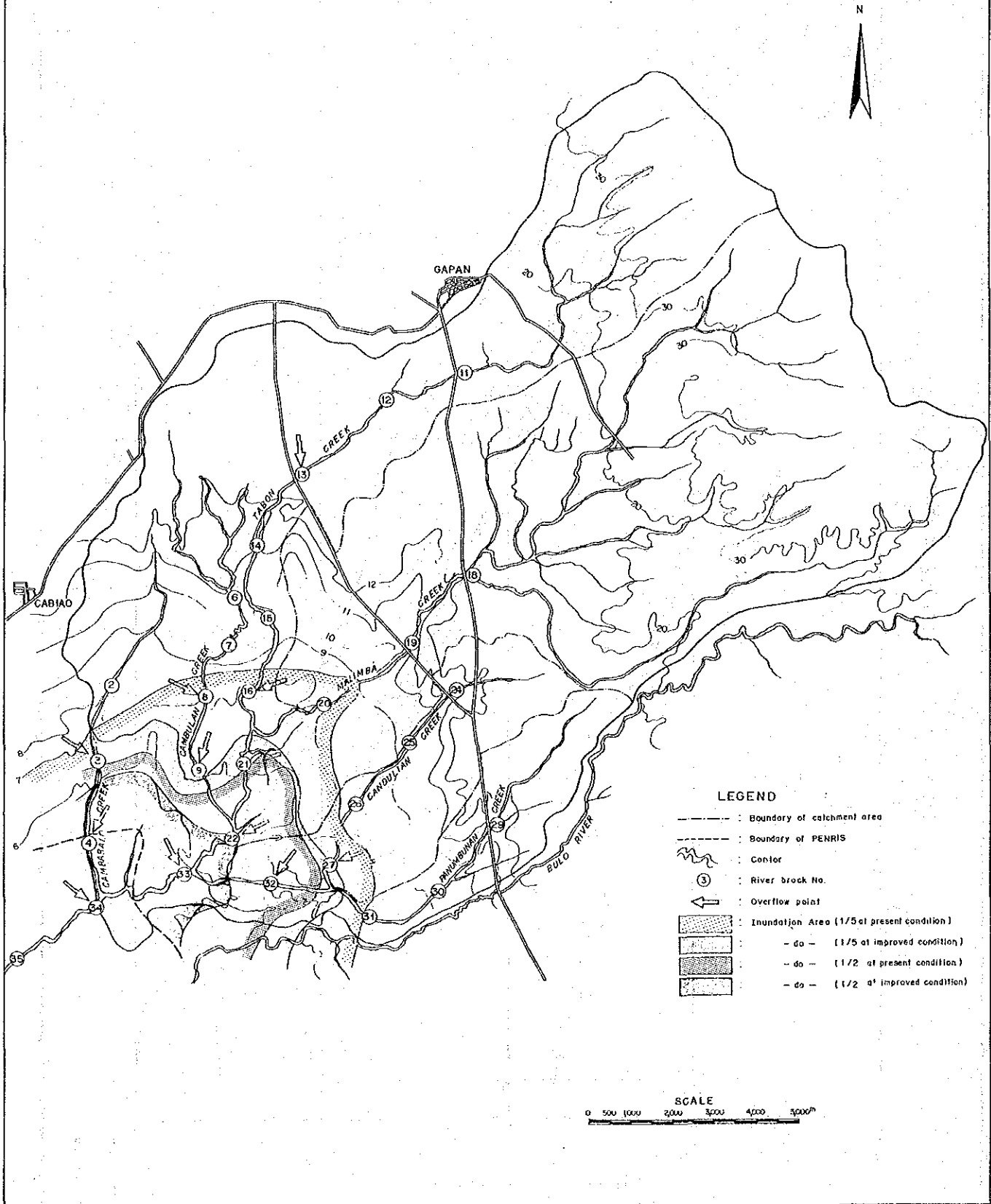


Fig. 15 DESIGN PROFILE OF THE TALAVERA RIVER (10-YR)

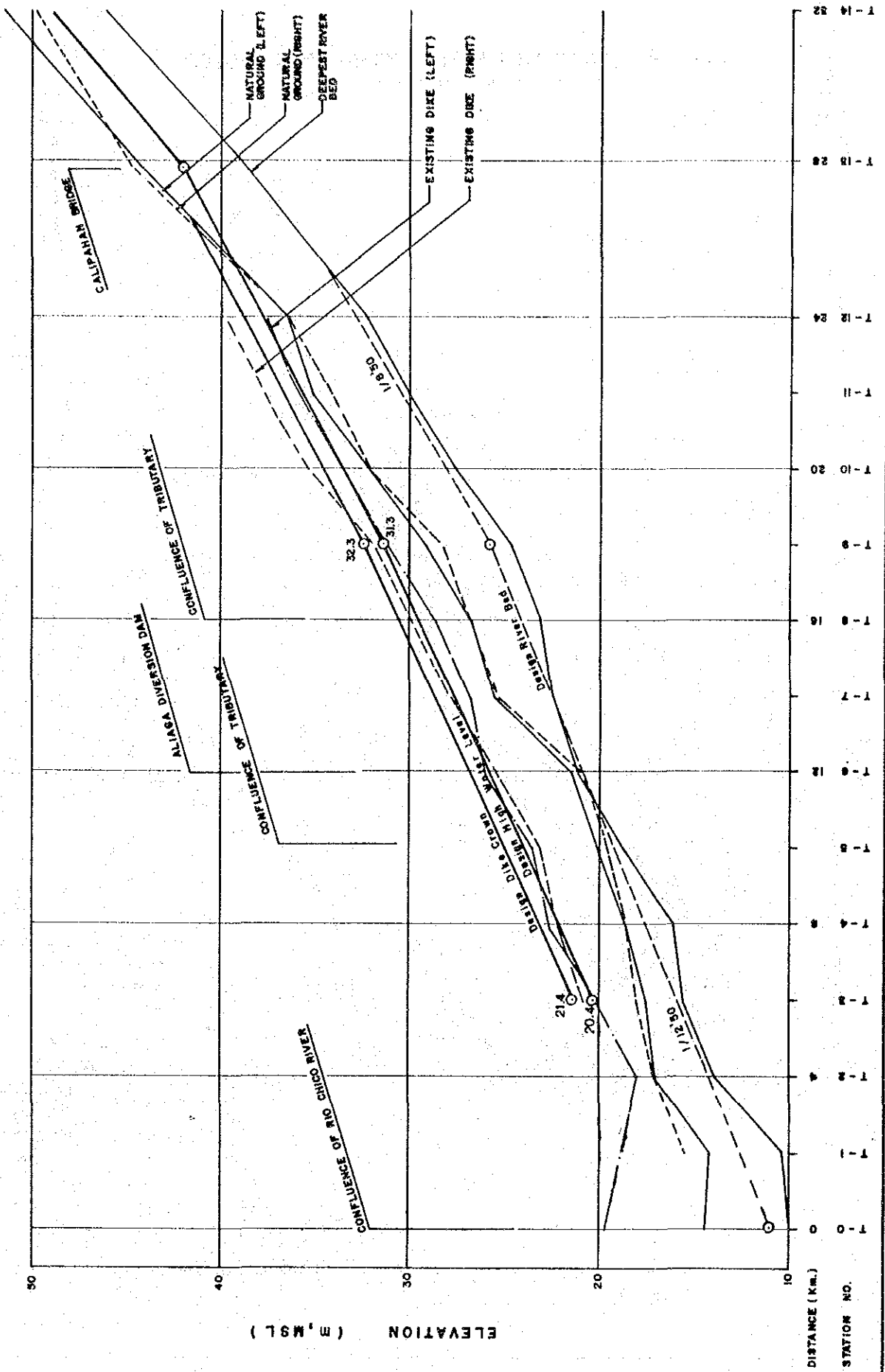


Fig. 16 DESIGN CROSS SECTION OF THE TALAVERA RIVER

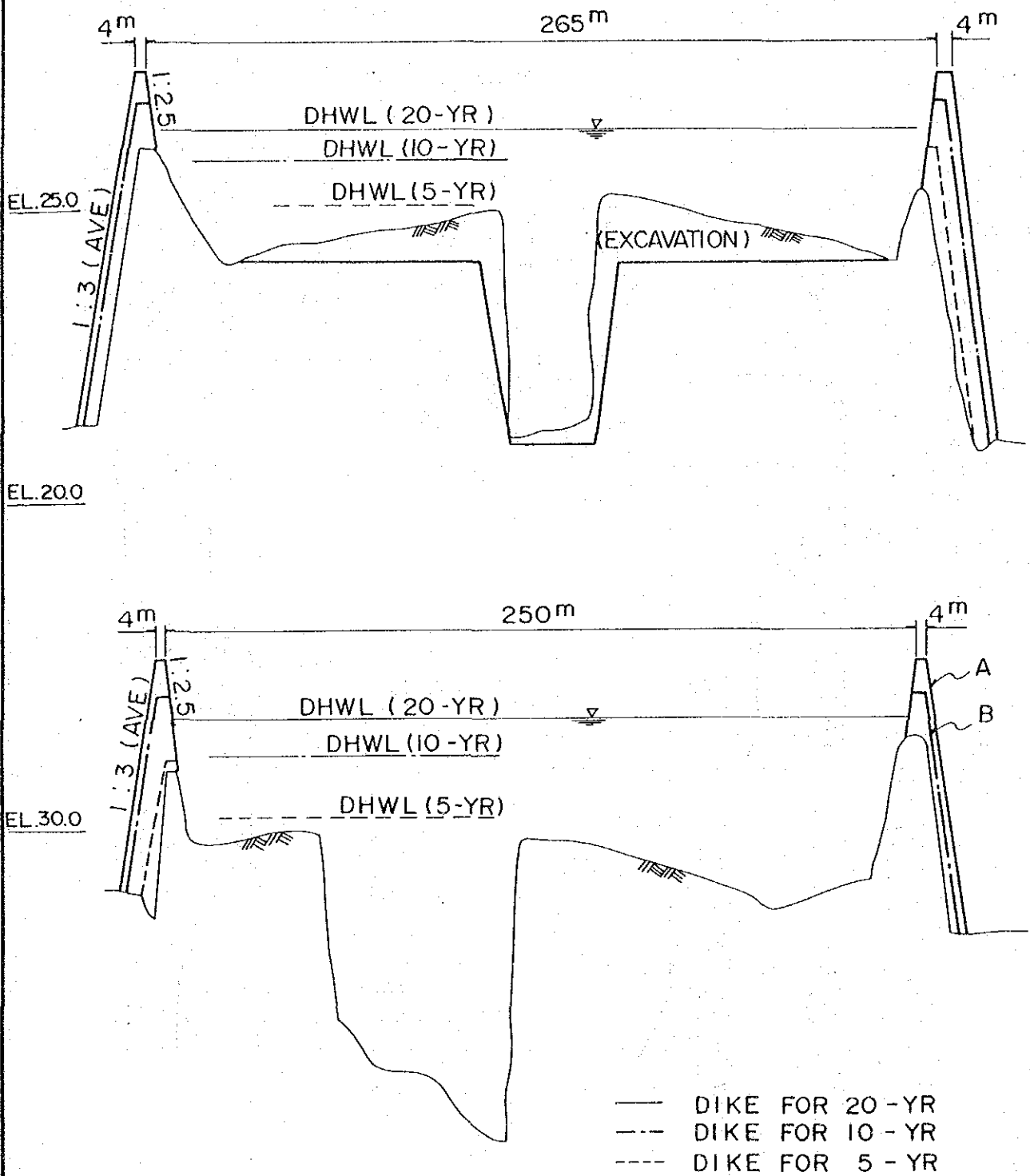


Fig. 17 STANDARD DIKE SECTION

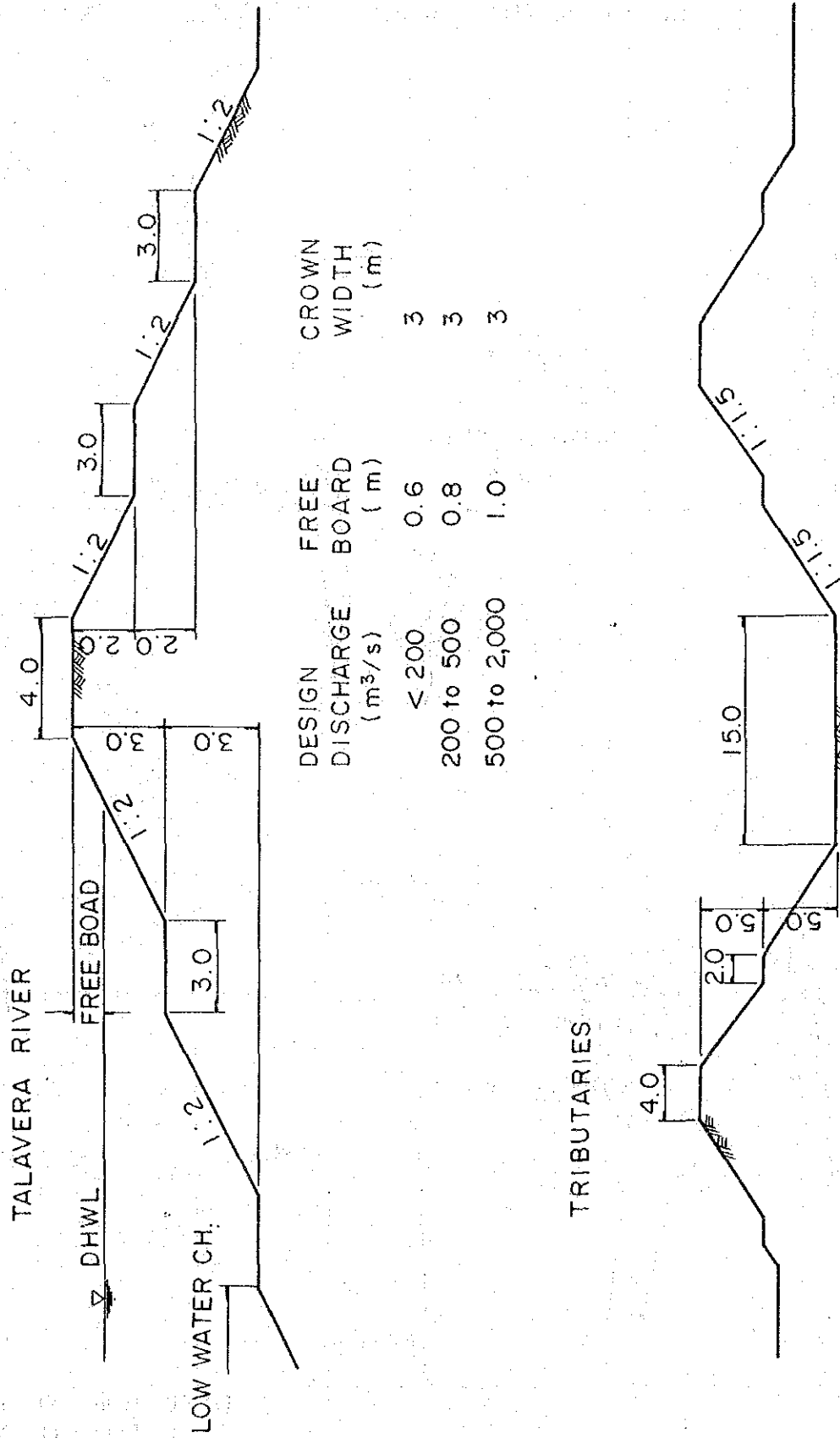




Fig. 19 PROPOSED ORGANIZATIONAL STRUCTURE  
UPRIIS MAIN OFFICE

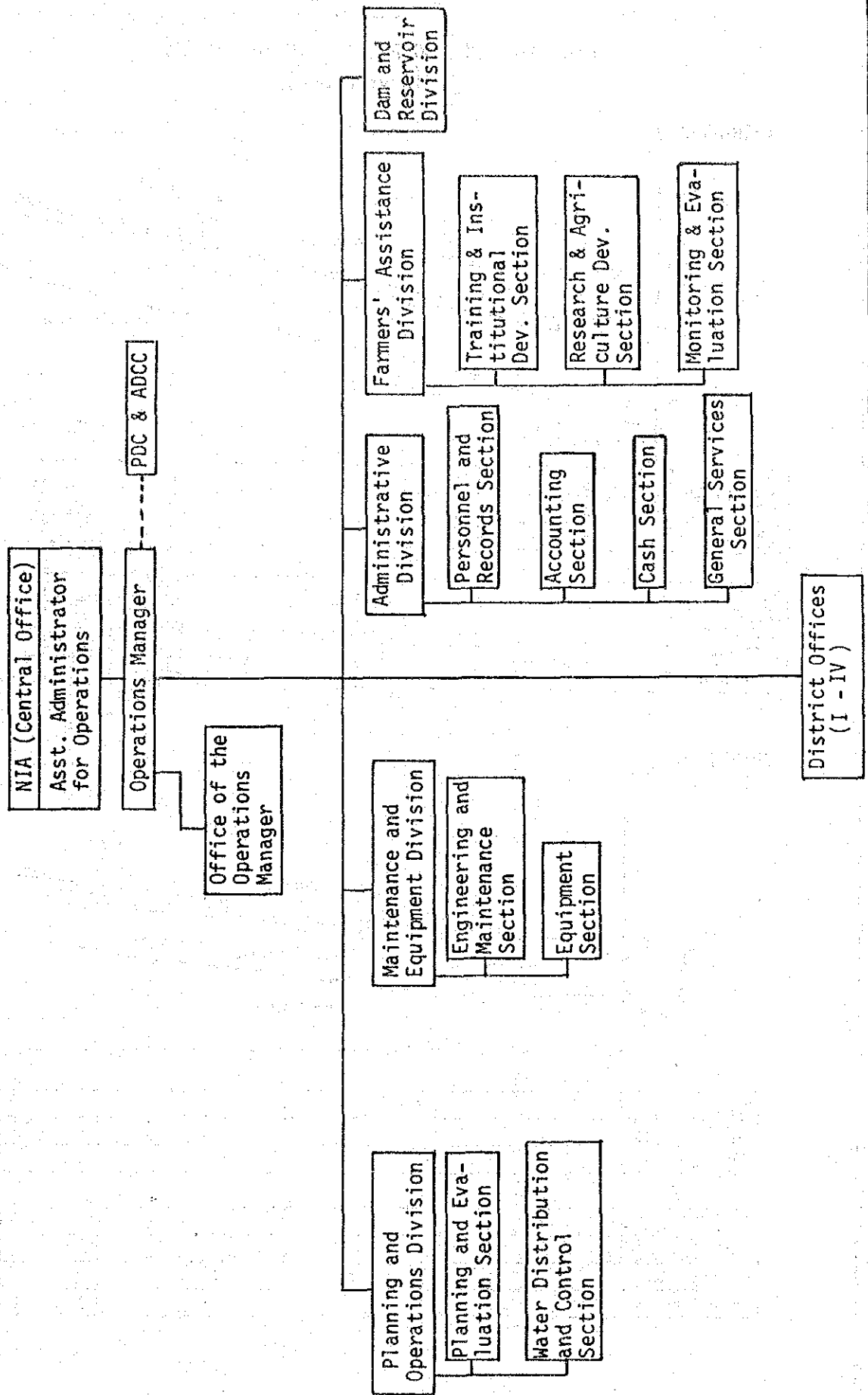


Fig. 20 PROPOSED ORGANIZATIONAL STRUCTURE  
UPRIIS - DISTRICT OFFICE

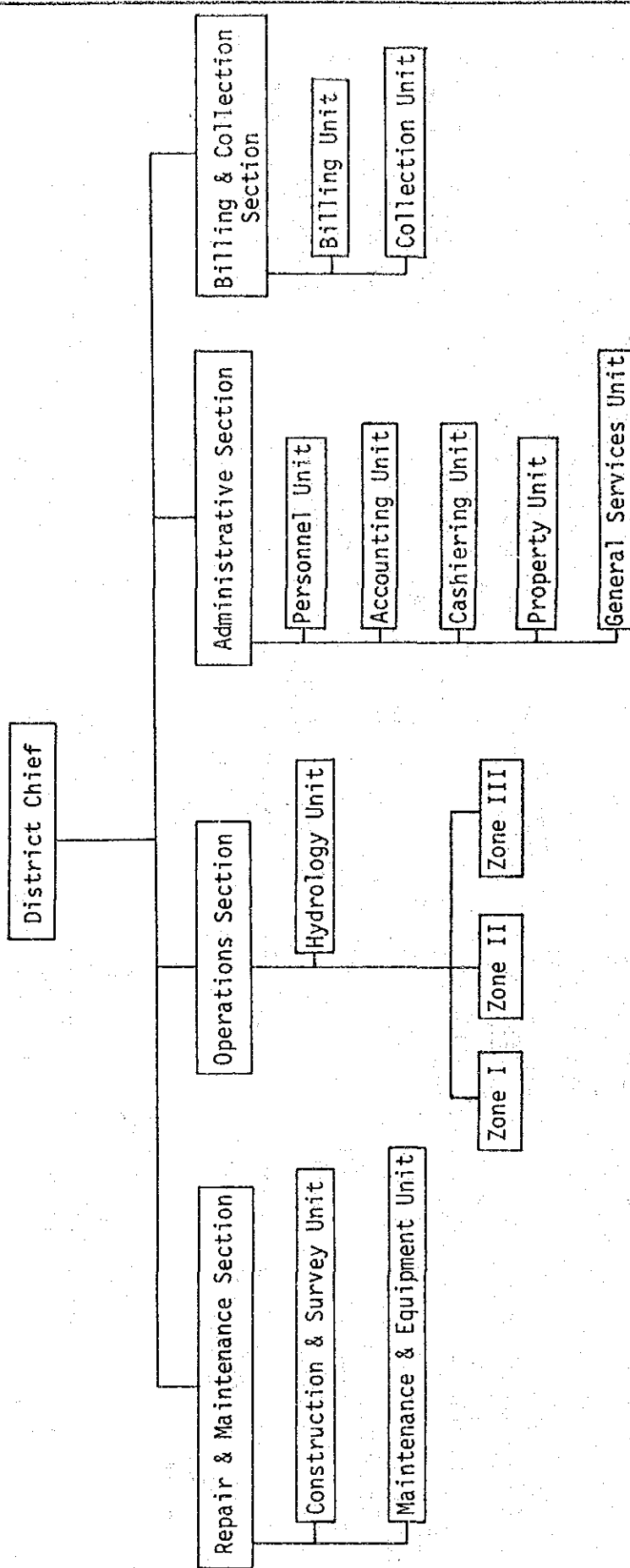
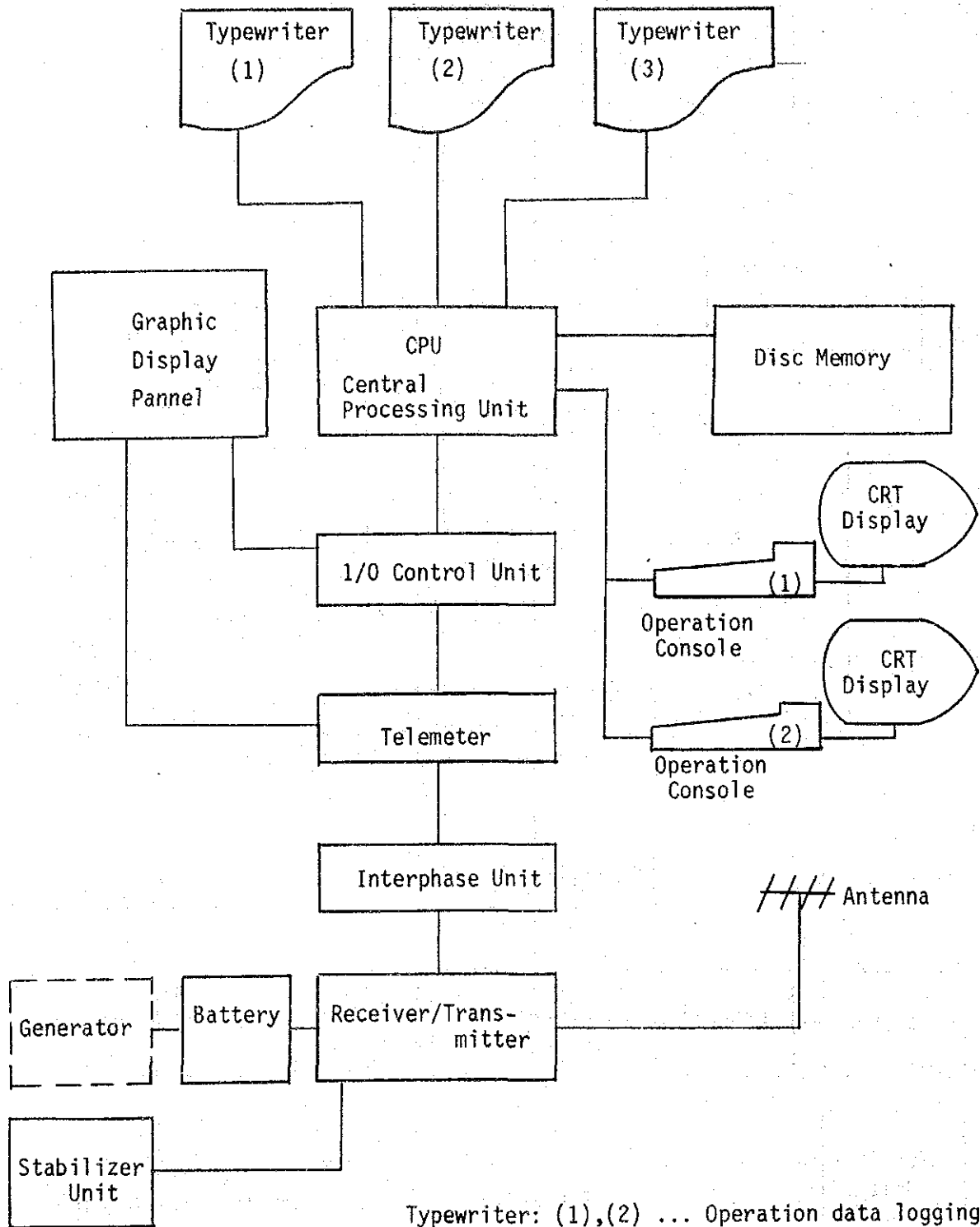






Fig. 22(1) PROPOSED STATION LAYOUT  
CENTRAL STATION

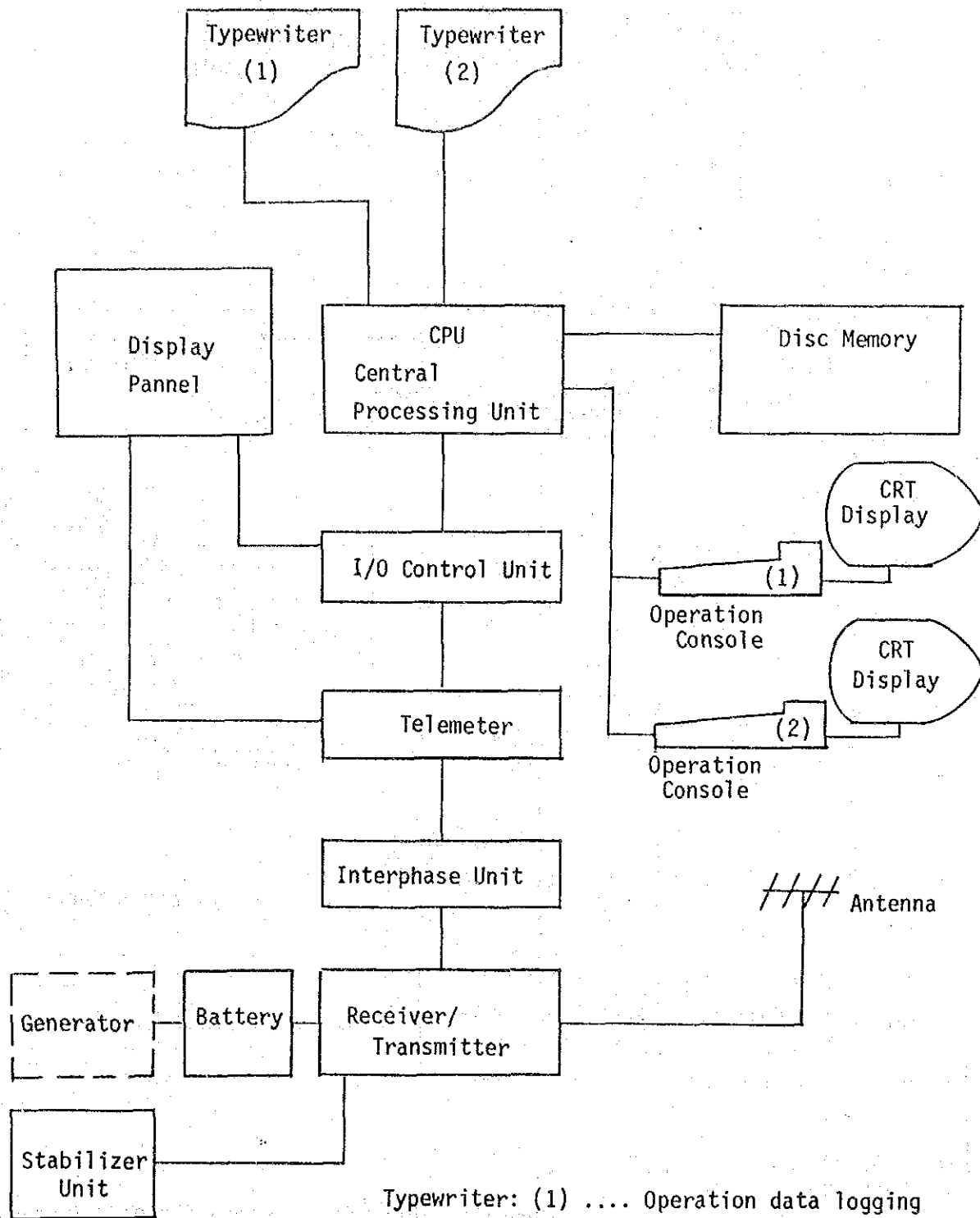


Typewriter: (1),(2) ... Operation data logging  
 (3) ..... Administrative data logging

Operation Console: (1) ..... Water management use  
 (2) ..... Administrative use

Fig. 22(2) PROPOSED STATION LAYOUT

BASE STATION (District Office)



Typewriter: (1) .... Operation data logging  
 (2) .... Administrative data logging

Operation Console : (1) .... Water management use  
 (2) .... Administrative use

Fig. 22(3) PROPOSED STATION LAYOUT

BASE STATION (Dam & Reservoir)

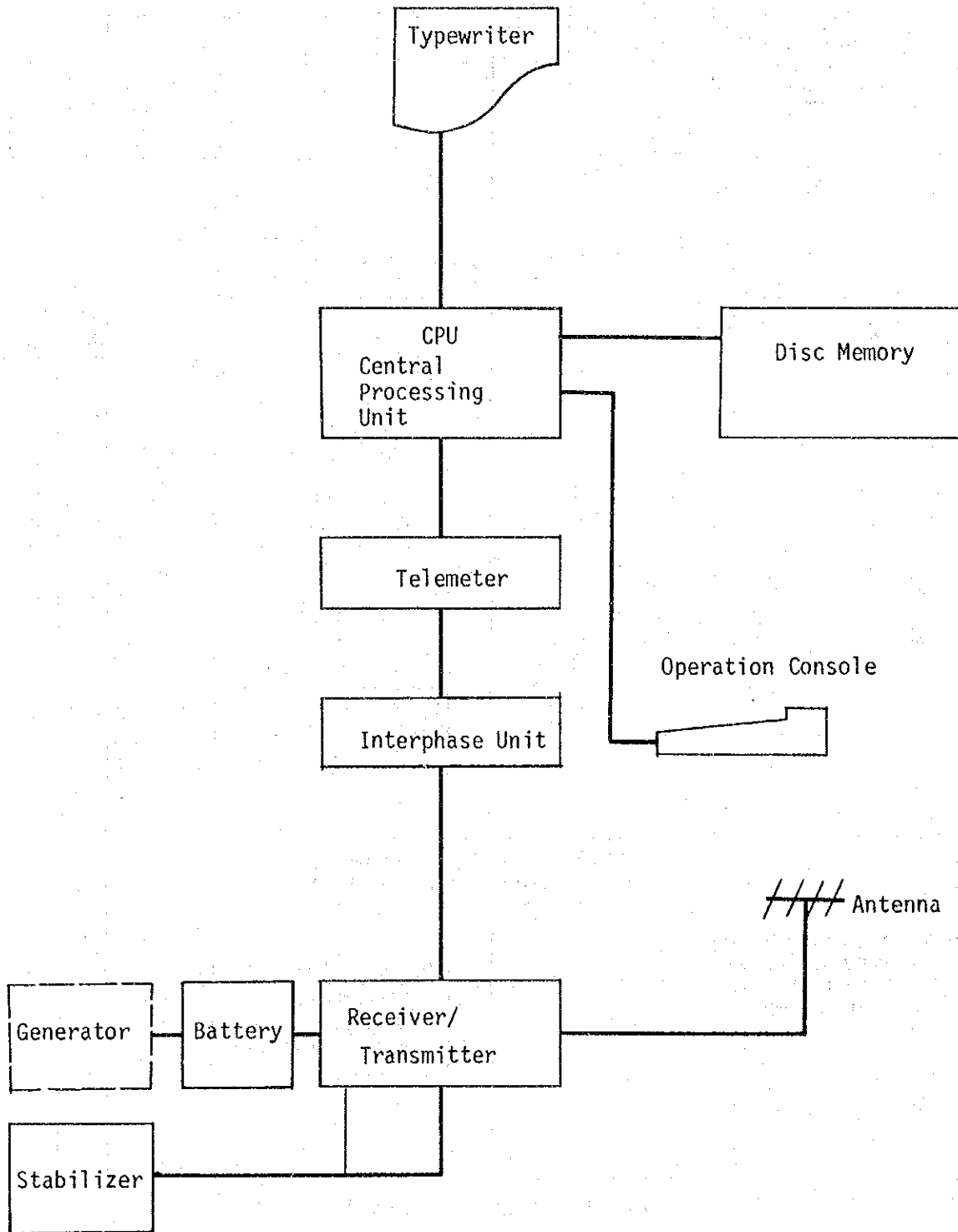
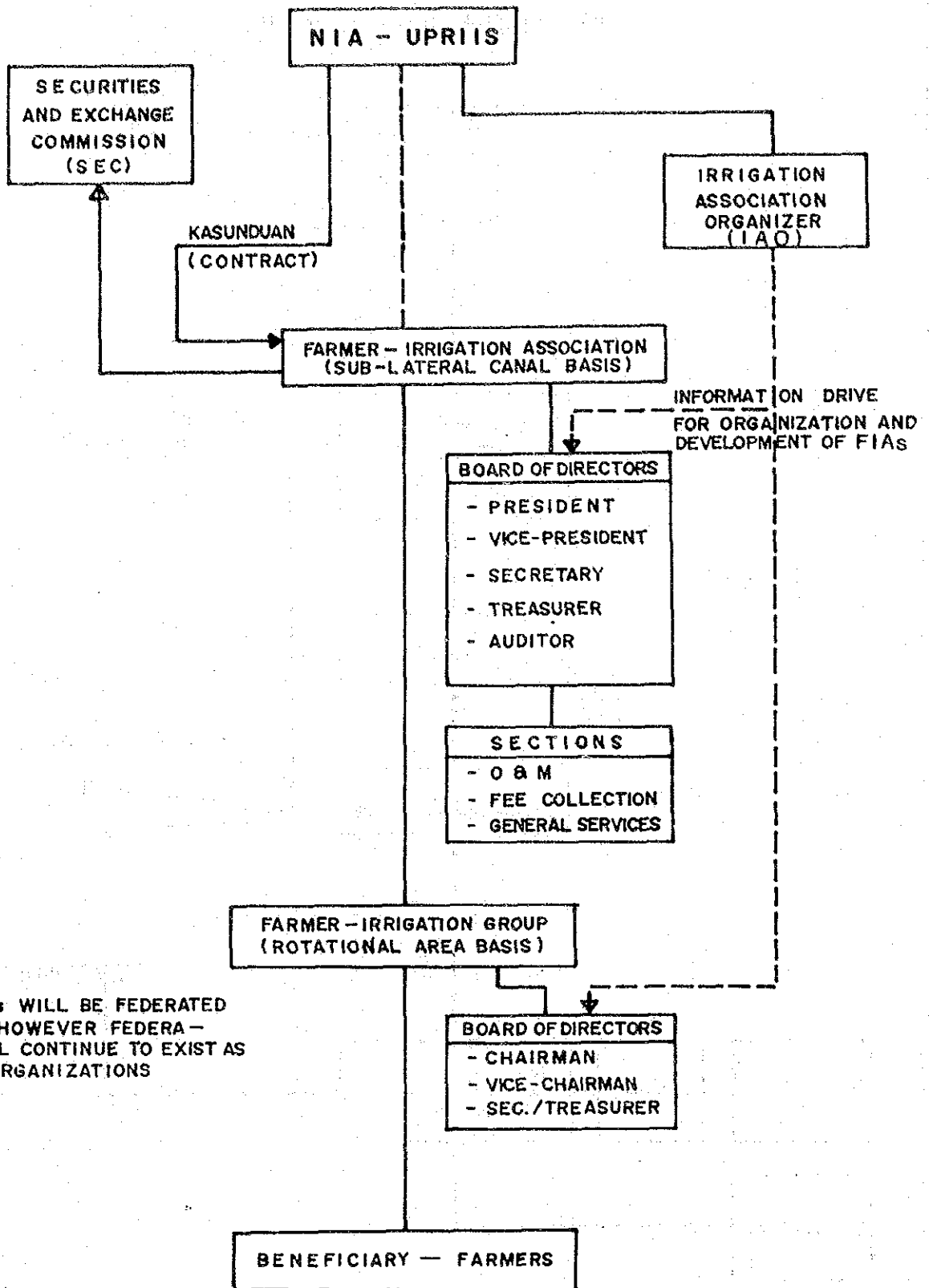


Fig. 23 PROPOSED ORGANIZATION CHART OF UPRIS IRRIGATION ASSOCIATION



**NOTE:**

FIGs WILL BE FEDERATED INTO FIA. HOWEVER FEDERATED FIGs WILL CONTINUE TO EXIST AS "LOOSE" ORGANIZATIONS

Fig. 24 IMPLEMENTATION SCHEDULE

		Area (x10 <sup>3</sup> ha.)	Length (km)	1985	1986	1987	1988	1989	1990	1991	1992	1993	1994
PREPARATORY WORKS District I	SAE	0.8		██████████									
	TRIS Upper	3.9				██████████							
	TRIS Lower	5.6											
	SDA	9.8 12.2											
District II	RMA	11.4											
	LTRIS	2.6											
	VCIS	2.7											
	MCIS	2.4											
	PRIS	5.0											
		13.6											
District III	PBRIS Pro.	25.6		██████████									
	PLATERO	10.4		██████████									
	ALIAGA	1.0											
	PCCA	5.3											
	PBRIS Ext'n	1.3											
		13.1											
District IV	PEÑRIS Pro.	41.9											
	PEÑRIS Ext'n	13.8											
		27.1											
River Improvement Drainage Improvement	TALAVERA	43.5											
	SAN ANTONIO NORTH CAMDABA	53.0 46.0											
Central Monitoring System	Control Office & Diversion Dam												
	District I												
	District II												
	District III District IV												







JICA