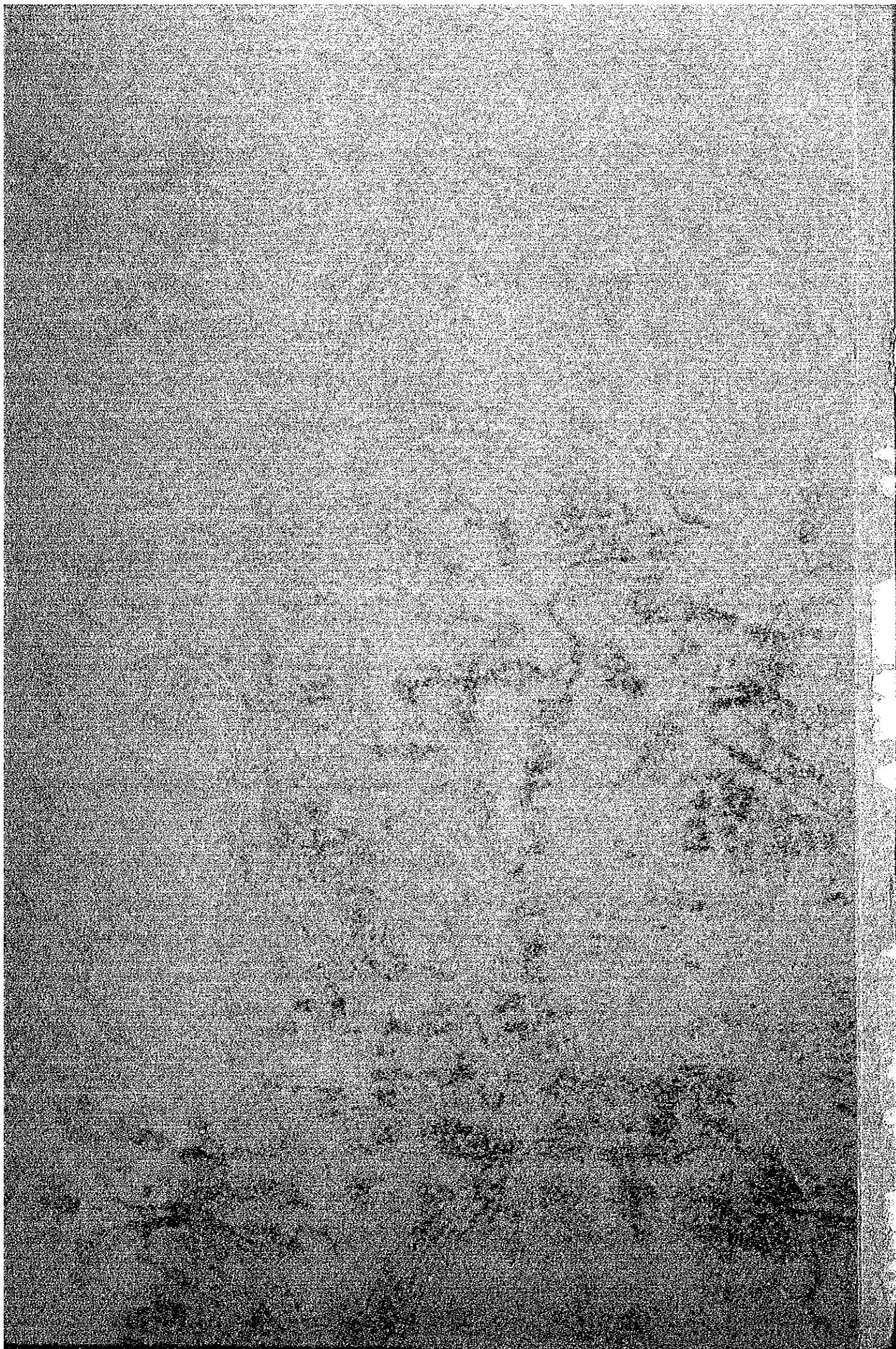


BASIC DESIGN STUDY
ON
PHILIPPINE HUMAN RESOURCES DEVELOPMENT CENTER PROJECT
IN
THE REPUBLIC OF THE PHILIPPINES

FEBRUARY 1983

JAPAN INTERNATIONAL COOPERATION AGENCY



118
80.7
CTRB
13963

BASIC DESIGN STUDY

ON

PHILIPPINE HUMAN RESOURCES DEVELOPMENT CENTER PROJECT

IN

THE REPUBLIC OF THE PHILIPPINES

JICA LIBRARY



1030634[0]

FEBRUARY 1983

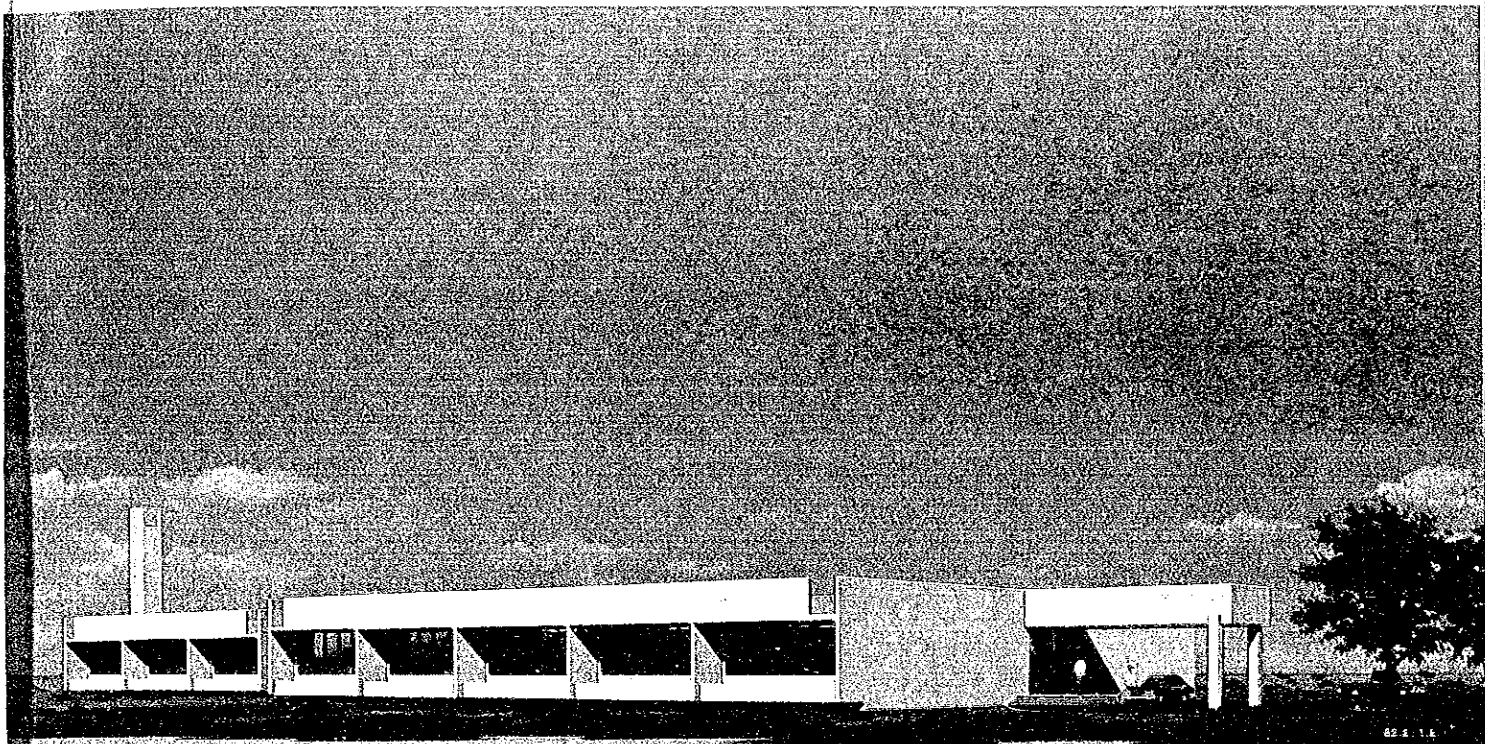
FEBRUARY, 1983

JAPAN INTERNATIONAL COOPERATION AGENCY

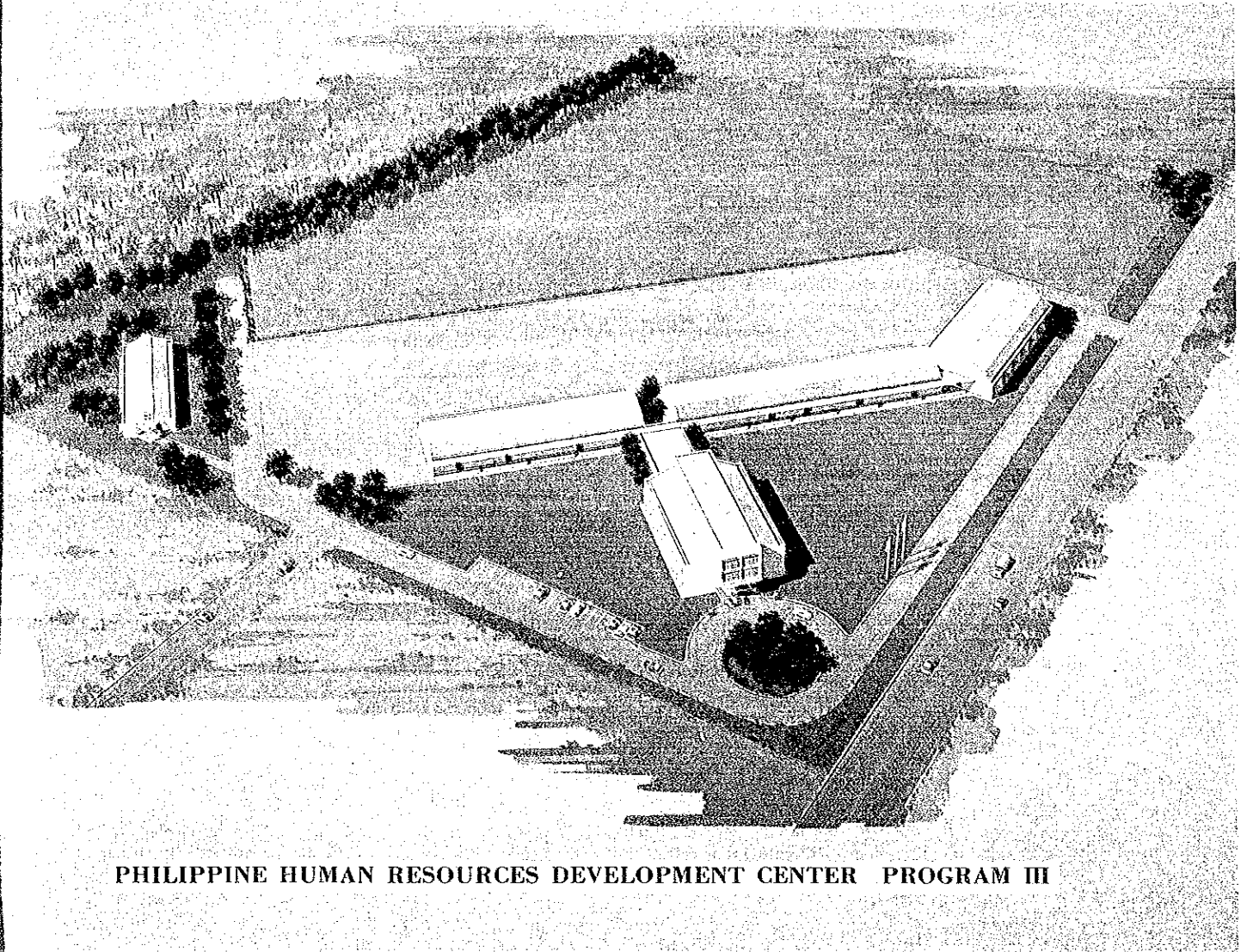
| | |
|------------------|-------------|
| 国際協力事業団 | |
| 受入 月日 84.9.24 | 1180 |
| 登録No. 09887 | 80.7 GRB |



PHILIPPINE HUMAN RESOURCES DEVELOPMENT CENTER PROGRAM I



PHILIPPINE HUMAN RESOURCES DEVELOPMENT CENTER PROGRAM II



PHILIPPINE HUMAN RESOURCES DEVELOPMENT CENTER PROGRAM III

PREFACE

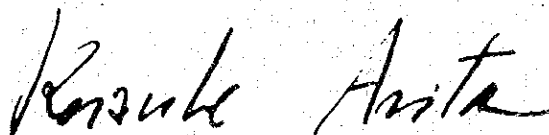
As a result of discussions between the Government of the Republic of the Philippines and the Government of Japan regarding ASEAN Human Resources Development Project, the Government of Japan decided to conduct a basic design survey on the Philippine Human Resources Development Center Project and entrusted the survey to the Japan International Cooperation Agency (JICA). The JICA sent to the Philippines a survey team headed by Mr. Michio Sato, Second Economic Cooperation Division, Economic Cooperation Bureau, Ministry of Foreign Affairs, from August 31st to September 10th (Phase I) and from October 10th to October 30th (Phase II), 1982.

The team had discussions with the officials concerned of the Government of the Philippines and conducted a field survey (in Metro Manila, Dagupan City and Carmona area). After the team returned to Japan, further studies were made and the present report has been prepared.

I hope that this report will serve for the development of the Project and contribute to the promotion of friendly relations between our two countries.

I wish to express my deep appreciation to the officials concerned of the Government of the Republic of the Philippines for their close cooperation extended to the team.

February, 1983



Keisuke Arita

President

Japan International Cooperation Agency



LOCATION OF SITES

INDEX

| | |
|--------------|---|
| SUMMARY..... | 1 |
|--------------|---|

| | |
|-------------------------------|---|
| CHAPTER 1 : INTRODUCTION..... | 5 |
|-------------------------------|---|

CHAPTER 2 : BACKGROUND OF THE PROJECT

| | | |
|-----|--|----|
| 2-1 | General | 7 |
| 2-2 | Human Resources Management Program | 10 |
| 2-3 | Philippine Fisheries | 11 |
| 2-4 | Construction Industry of the Philippines | 12 |
| 2-5 | Small- and Medium-Scale Industry | 14 |

CHAPTER 3 : OUTLINE OF PROJECT SITES

| | | |
|-------|---|----|
| 3-1 | Location and General Condition of Sites | 16 |
| 3-1-1 | Program I | 16 |
| 3-1-2 | Program II | 19 |
| 3-1-3 | Program III | 21 |
| 3-1-4 | Program IV | 23 |
| 3-2 | Natural Conditions | 25 |
| 3-2-1 | Geological Conditions | 25 |
| 3-2-2 | Sea Water around the Program II Site | 28 |
| 3-2 | Public Utilities | 30 |
| 3-3-1 | Program I | 30 |
| 3-3-2 | Program II | 32 |
| 3-3-3 | Program III | 33 |
| 3-3-4 | Program IV | 35 |

CHAPTER 4: PROJECT

| | | |
|-----------|-------------------------------------|----|
| 4-1 | Objectives and Import | 37 |
| 4-1-1 | PHRDC | 37 |
| 4-1-2 | Program I | 39 |
| 4-1-3 | Program II | 40 |
| 4-1-4 | Program III | 41 |
| 4-1-5 | Program IV | 42 |
| 4-2 | Areas of Japanese Cooperation | 44 |
| 4-3 | Basic Design | 48 |
| 4-3-1 | Basic Design Policy | 48 |
| 4-3-2 | Basic Design | 49 |
| 4-3-2-(1) | Site Utilization Design | 49 |
| -1) | Program I | 49 |
| -2) | Program II | 50 |
| -3) | Program III | 51 |
| -4) | Program IV | 52 |
| 4-3-2-(2) | Architectural Design | 53 |
| -1) | Program I | 53 |
| -2) | Program II | 59 |
| -3) | Program III | 62 |
| 4-3-2-(3) | Structural Design | 69 |
| -1) | Design Principles | 69 |
| -2) | Program I | 72 |
| -3) | Program II | 72 |
| -4) | Program III | 73 |
| 4-3-2-(4) | Utility Design | 75 |
| -1) | Design Principles | 75 |
| -2) | Program I | 76 |
| -3) | Program II | 84 |
| -4) | Program III | 97 |

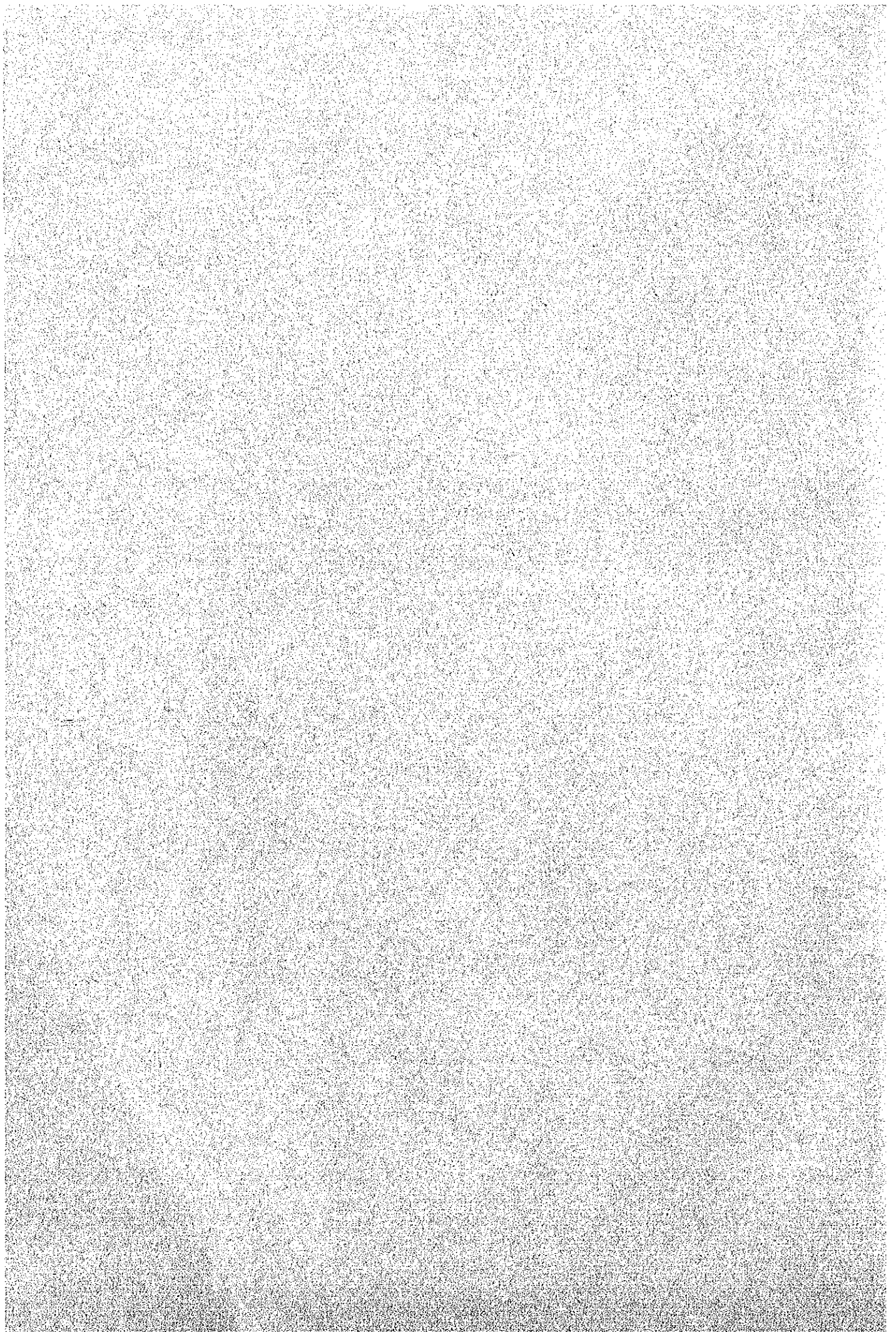
| | | |
|-----------|----------------------------------|-----|
| 4-3-2-(5) | Equipment Planning | 105 |
| -1) | Principles | 105 |
| -2) | Program I | 106 |
| -3) | Program II | 107 |
| -4) | Program III | 107 |
| -5) | Program IV | 108 |
| -6) | Facility Plan for Equipment | 110 |
| 4-4 | Basic Design Drawings | 115 |
| 4-5 | Lists of Equipment | 127 |
| 4-6 | Estimation of Budget | 133 |

CHAPTER 5 : IMPLEMENTATION ORGANIZATION

| | | |
|-------|--|-----|
| 5-1 | Implementation Organization of the Philippine.. | 135 |
| 5-1-1 | Executive Agency | 135 |
| 5-1-2 | Organization of Each Program | 135 |
| 5-2 | Implementation Plan | 136 |
| 5-2-1 | Implementation System for Construction and Supply | 136 |
| 5-2-2 | Implementation Organization | 137 |
| 5-2-3 | Supervision | 138 |
| 5-3 | Scope of Involvement | 139 |
| 5-4 | Implementation Schedule | 141 |
| 5-5 | Maintenance Scheme | 143 |
| 5-5-1 | Scheme | 143 |
| 5-5-2 | Expense | 147 |
| 5-6 | Procurement | 149 |
| 5-6-1 | Material | 149 |
| 5-6-2 | Equipment | 151 |
| 5-6-3 | Manpower | 151 |

| | |
|--|------------|
| CHAPTER 6: PROJECT APPRAISAL | 152 |
| CHAPTER 7: CONCLUSION AND SUGGESTIONS | 154 |

SUMMARY



SUMMARY

In January 1981, on the occasion of his visit to ASEAN countries, then Japanese Prime Minister Zenko Suzuki expressed Japan's willingness to assist ASEAN countries in establishing ASEAN Human Resources Development Project as proposed by his predecessor, the late Masayoshi Ohira.

Since then, Japanese and ASEAN authorities have held many talks on the implementation of the ASEAN Human Resources Development Project. It was determined that the Republic of the Philippines would receive Japanese cooperation in its Philippines Human Resources Development Center Project (PHRDC Project) which consists of programs principally concerned with the development of the rural areas.

Toward the realization of the PHRDC Project, the Japan International Cooperation Agency (JICA) sent its Planning Survey Mission and Preliminary Survey Team to the Philippines to study the substance of the project and to discuss the scope of Japanese cooperation with the Philippine authorities. Based on the results of these two missions, the Implementation Survey Team was dispatched to the Philippines on August 29, and stayed to further study the situation until September 10, 1982.

An agreement was reached with the Philippine authorities on the scope of the Japanese technical cooperation and a RECORD OF DISCUSSIONS was drawn up and signed by both parties on September 9, 1982.

In the meantime, to determine the extent of grant aid cooperation necessary for the implementation and supply of facilities and equipment for the PHRDC project, JICA had dispatched an expert to participate in the Preliminary Survey Team and also sent the Basic Design Survey Team (Phase I from August 31 to September 10, 1982, and Phase II from October 10 to October 30, 1982) to the Philippines to survey and investigate and ultimately develop the optimum basic design of facilities and equipment for the project.

Currently the government of the Philippines is starting a rural livelihood enhancement movement to develop rural areas and the national livelihood by extending productive technologies to the people. In this movement, the government establishes human resource development programs and introduces non-traditional products in agricultural and fishing industries.

This project consists of four programs all of which require much training and technological assistance and rate high priority for Japanese technical cooperation for their execution.

The four programs which compose the PHRDC project are listed below; and the PHRDC secretariat who is to be stationed in the facility of Program I is expected to coordinate and support these four programs.

- 1) Program I : Human Resources Management Programs
 - ° Establishment of human resources data bank and information system
 - ° Production of teaching materials
- 2) Program II : Seafarming
 - ° Research and development of oyster culture and depuration
- 3) Program III : Shelter and Construction Manpower Training Program
 - ° Training of construction teachers and craft teachers
- 4) Program IV : Cottage and Light Industry Program
 - ° Training of teachers and technicians in woodcraft, bamboo and rattan craft

The agencies primarily responsible for the implementation of each program and its outline are given in Table F-1.

TABLE F-1

| | | |
|-------------|-----------|---|
| Program I | Agency | University of Life, Ministry of Human Settlement |
| | Site | Campus of University of Life Meralco Ave. Pasig, Metro Manila |
| | Facility | Renovation of existing dormitory into rooms for Program I Extension of building for A/V classroom, TV Studio and Computer Room |
| | Equipment | Computer, TV Production, A/V Apparatus, Outdoor Training Van, Outdoor Production Car and Others |
| Program II | Agency | Ministry of Human Settlement Ministry of Natural Resources |
| | Site | Binloc, Dagupan City, Pangasinan |
| | Facility | Adm. Dept., Laboratories, Conference Room, Oyster Treatment Dept., Refrigerators |
| | Equipment | Research Equipment, Oyster Treatment Purification and Refrigeration Apparatus, A/V Apparatus, Outdoor Training Van and Others |
| Program III | Agency | Construction Manpower Development Foundation, Ministry of Trade and Industry |
| | Site | Carmona, Cavite |
| | Facility | Adm. Dept., Classrooms, A/V Classroom, Workshops, Dormitory |
| | Equipment | Training Machines for each course, A/V Apparatus, Outdoor Training Van and Others |

| | | |
|------------|-----------|---|
| Program IV | Agency | National Cottage Industries Development Authority, Ministry of Trade and Industry |
| | Site | Cottage Industries Technology Center, NACIDA Marikina, Metro Manila |
| | Equipment | Machinery for Wood, Bamboo and Rattan Craft, and Related Work |

Taking the regulations and procedures of Japanese grant aid into consideration, implementation of this project should probably be done in specified phases.

For the economic improvement of the Philippines, rural development is an urgent necessity and the extreme differences in living standards existing within urban areas themselves must be rectified. These are problems common to all developing countries. Introduction of technical and productive training applicable to local society, and development of new industry are steps towards reaching a solution to these problems.

The plan proposed by the Philippine authorities for this project, to control and coordinate various rural development programs closely and to supply training and teaching materials systematically, will be useful in the implementation of future rural development programs. The research for this project can be a guideline for similar projects in other ASEAN countries. Therefore, this project, while being a PHRDC project, is in a larger sense an ASEAN Human Resources Development Project.

Though Japanese technical cooperation is being input into this project, the Philippine authorities are expected to assume the responsibility for administration, maintenance and operation of this project because of the expense and manpower involved.

The PHRDC will be the pivot point of an enter-agency effort to implement the project.