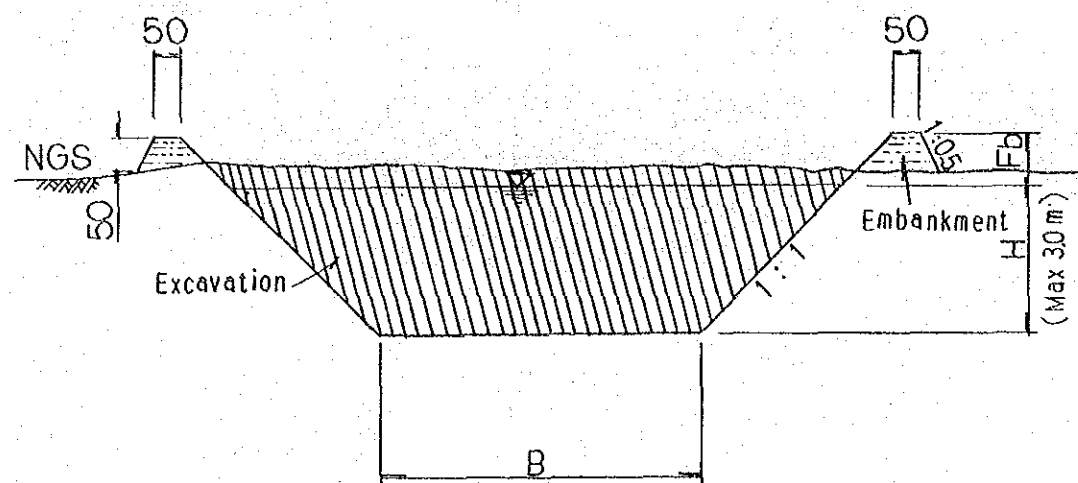
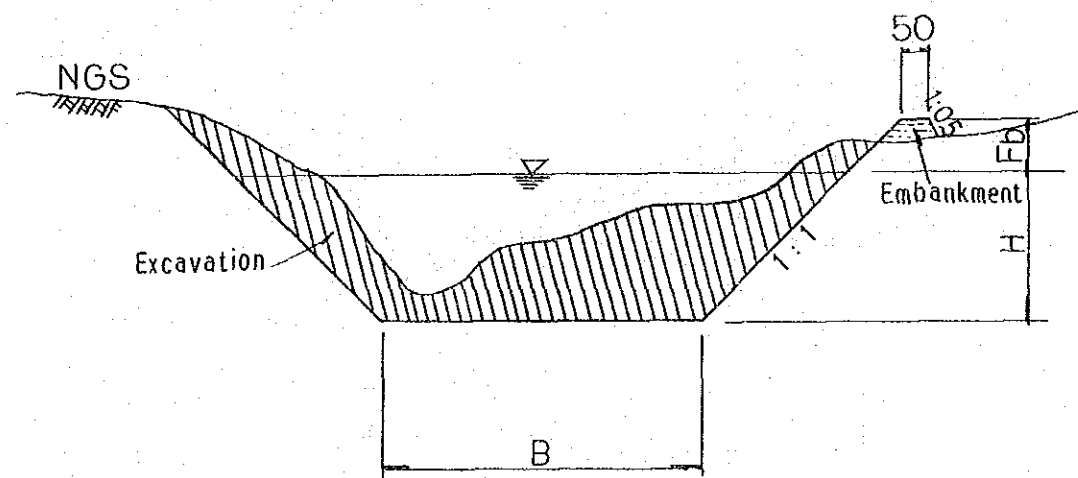


|   |          |
|---|----------|
| REPUBLIC OF THE PHILIPPINES                       |          |
| NATIONAL IRRIGATION ADMINISTRATION                |          |
| ASUE RIVER BASIN AGRICULTURAL DEVELOPMENT PROJECT |          |
| Layout of On-farm Facilities (Sample B)           |          |
| JAPAN INTERNATIONAL COOPERATION AGENCY            |          |
| DWG. NO. 603                                      | SHEET OF |

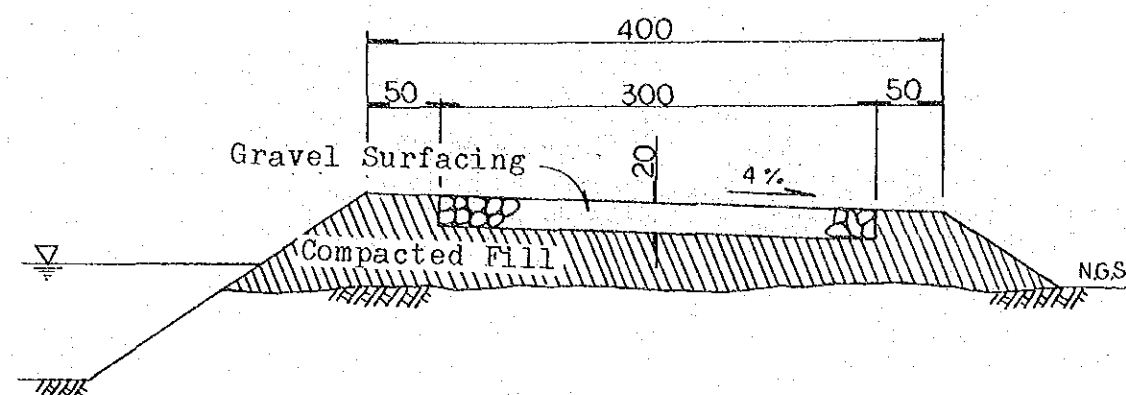


TYPICAL SECTION OF NEW CANAL

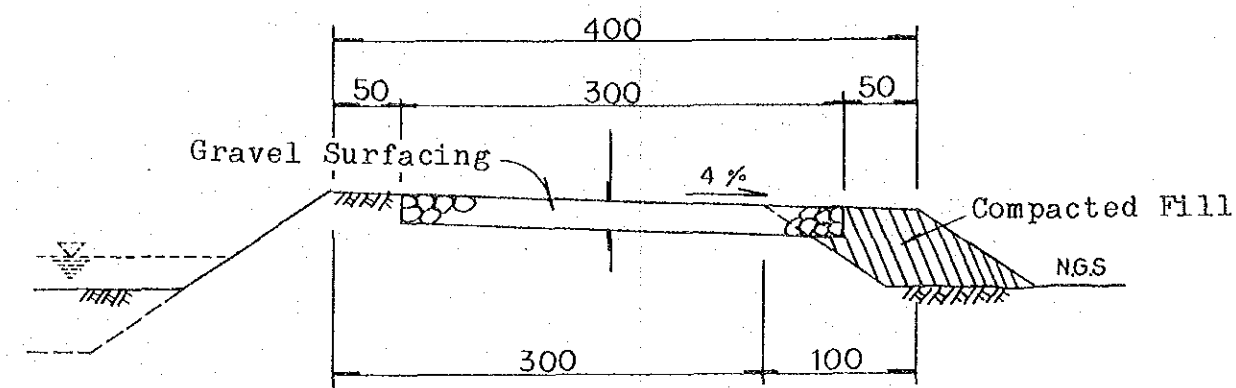


TYPICAL SECTION OF EXCAVATED CREEK

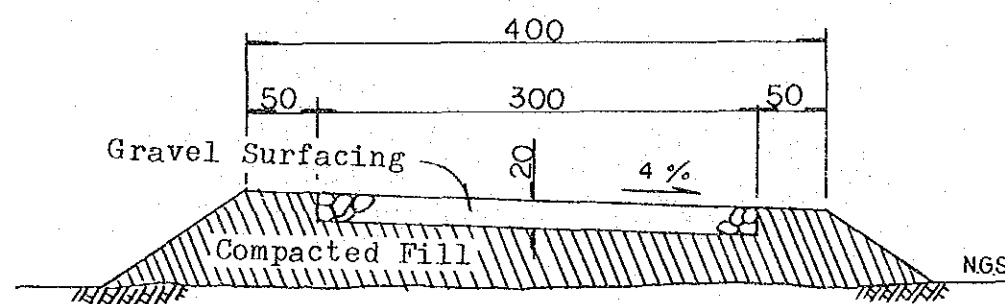
|   |          |
|---|----------|
| REPUBLIC OF THE PHILIPPINES                       |          |
| NATIONAL IRRIGATION ADMINISTRATION                |          |
| ASUE RIVER BASIN AGRICULTURAL DEVELOPMENT PROJECT |          |
| Typical Drainage Canal Section                    |          |
| JAPAN INTERNATIONAL COOPERATION AGENCY            |          |
| DWG. NO. 701                                      | SHEET OF |



SERVICE ROAD ALONG IRRIGATION CANAL

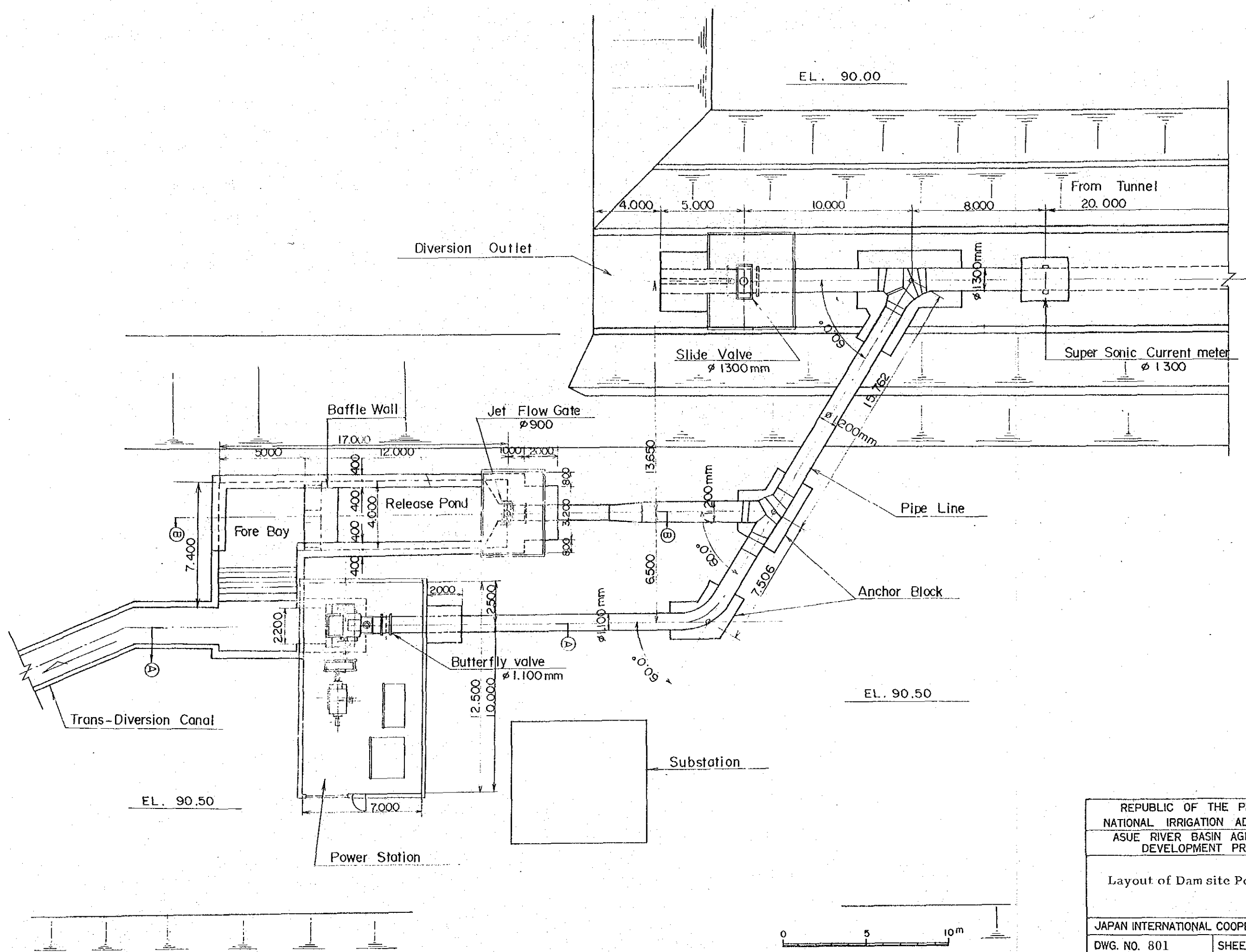


WIDING OF EXISTING ROAD OR  
3 m SERVICE ROAD ALONG LATERAL CANAL

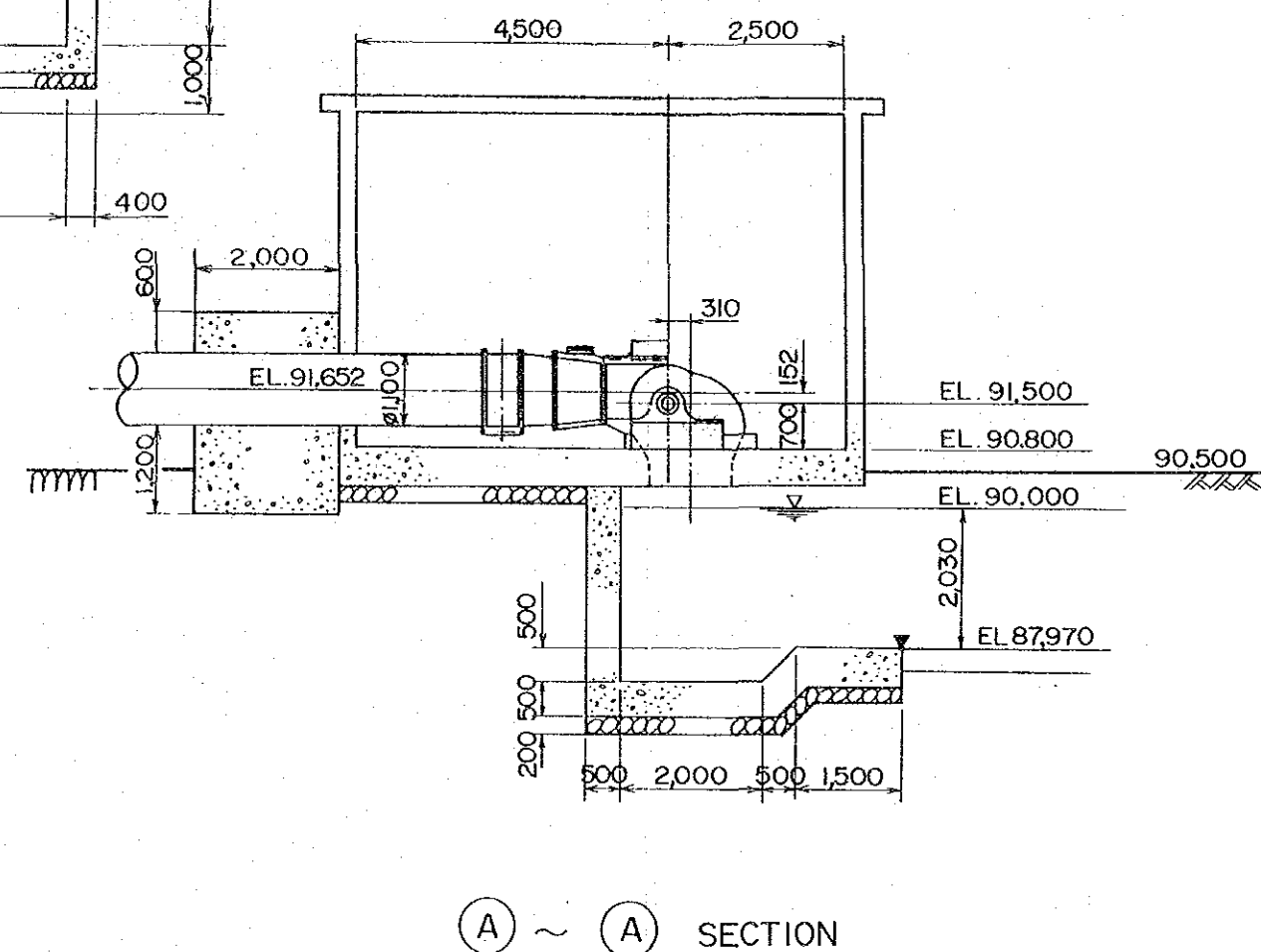
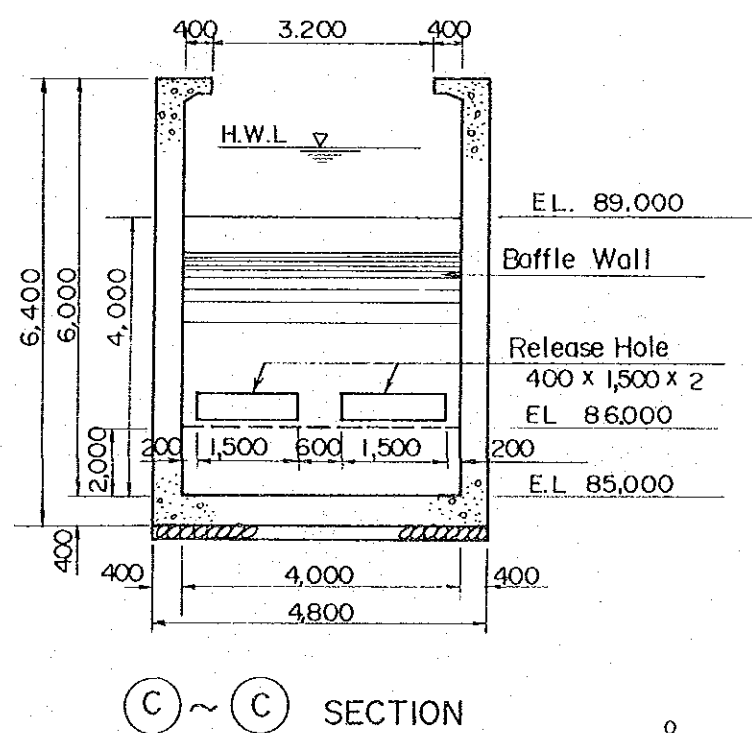
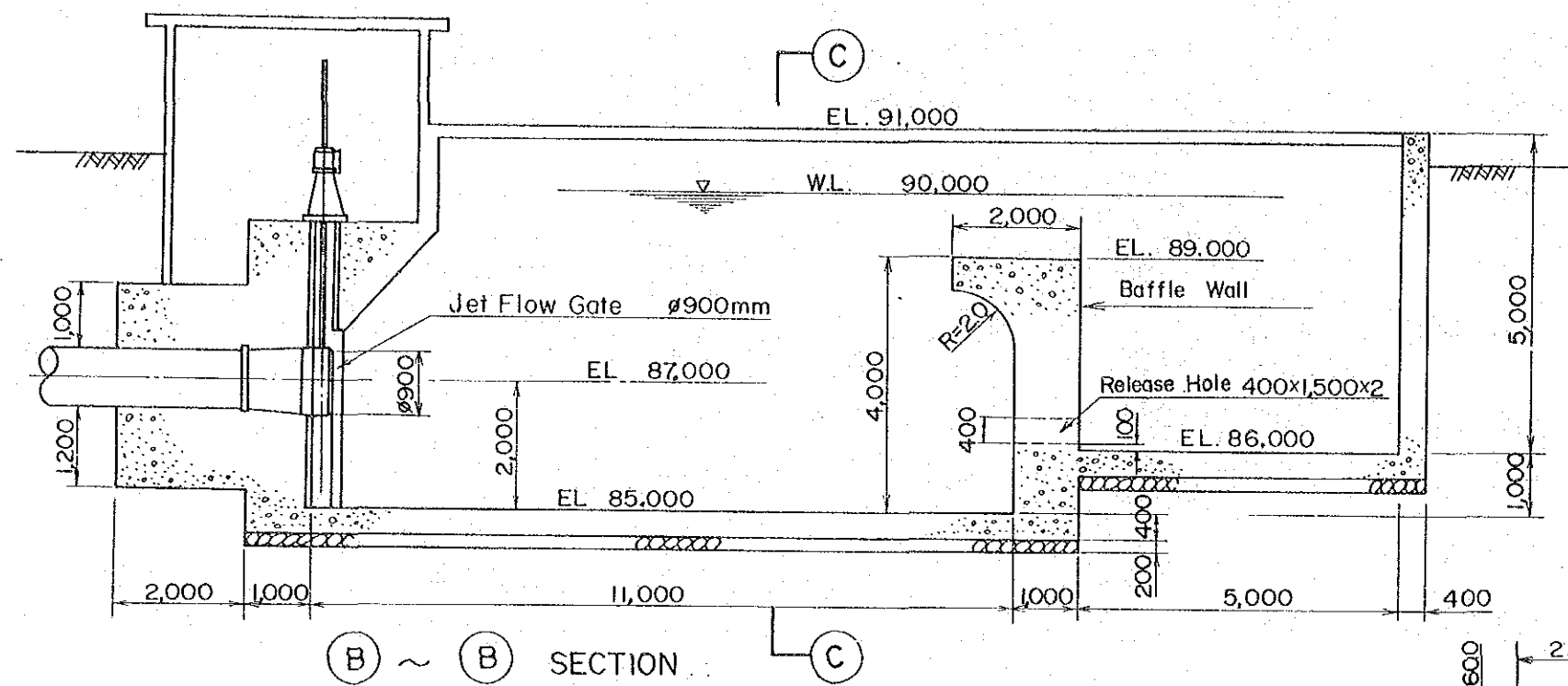


NEWLY CONSTRUCTED ROAD

|   |          |
|---|----------|
| REPUBLIC OF THE PHILIPPINES                       |          |
| NATIONAL IRRIGATION ADMINISTRATION                |          |
| ASUE RIVER BASIN AGRICULTURAL DEVELOPMENT PROJECT |          |
| Typical Road Section                              |          |
| JAPAN INTERNATIONAL COOPERATION AGENCY            |          |
| DWG. NO. 702                                      | SHEET OF |

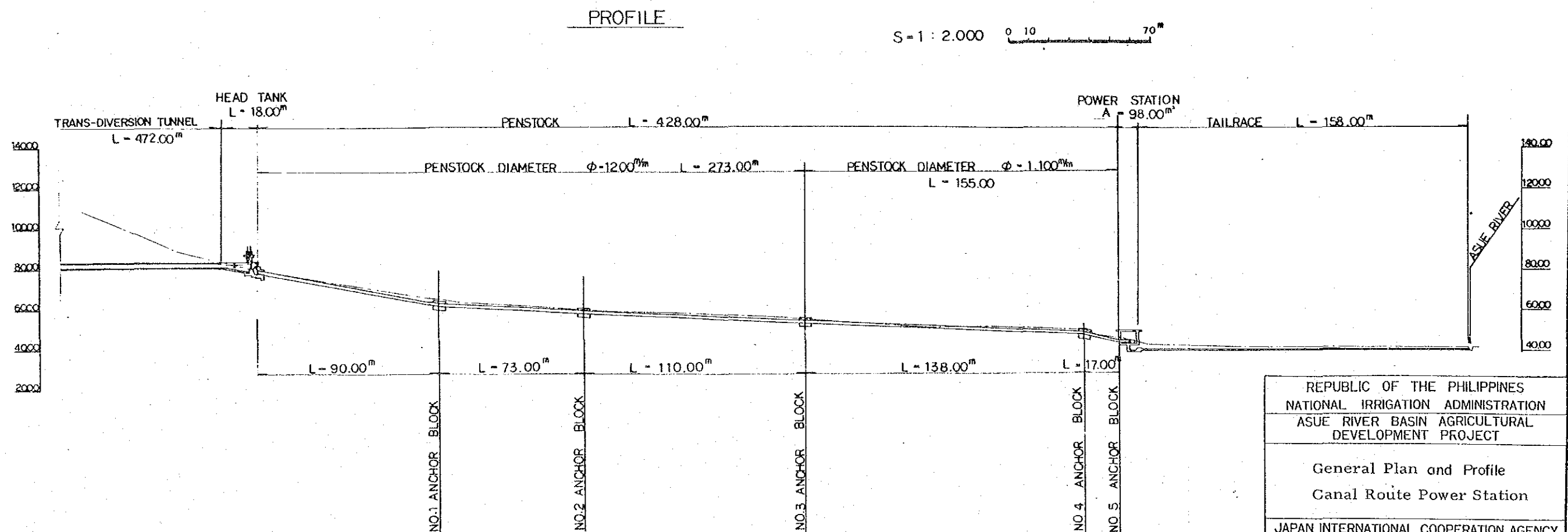
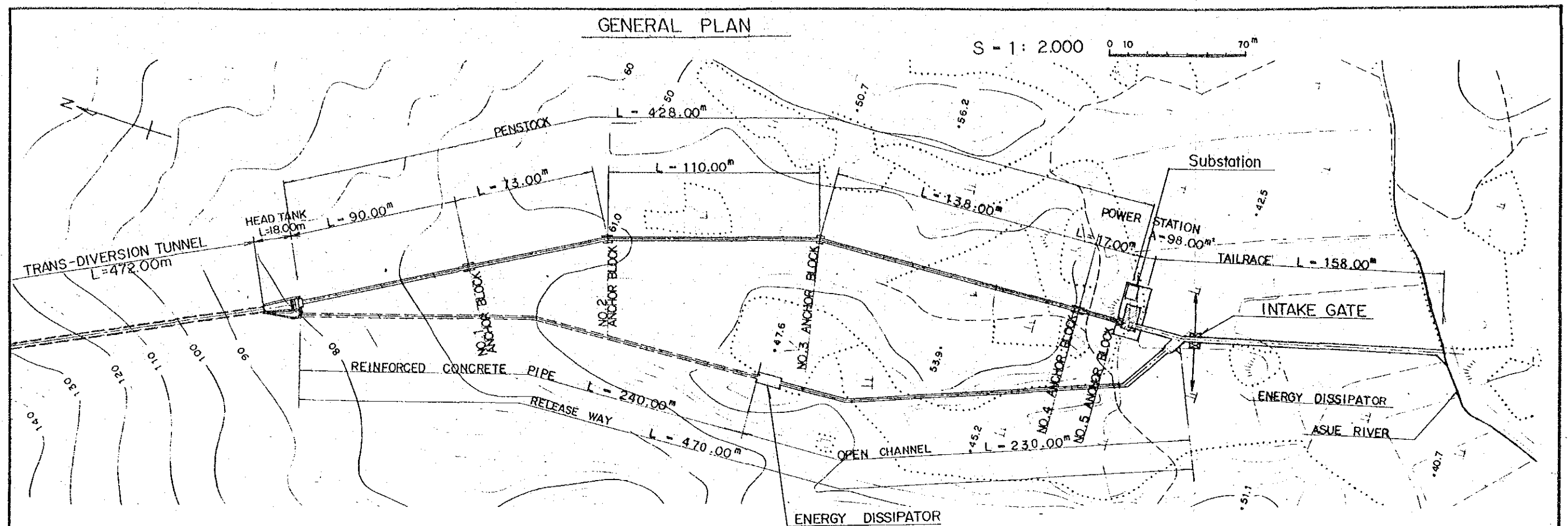


|   |          |
|---|----------|
| REPUBLIC OF THE PHILIPPINES                       |          |
| NATIONAL IRRIGATION ADMINISTRATION                |          |
| ASUE RIVER BASIN AGRICULTURAL DEVELOPMENT PROJECT |          |
| Layout of Dam site Power Station                  |          |
| JAPAN INTERNATIONAL COOPERATION AGENCY            |          |
| DWG. NO. 801                                      | SHEET OF |

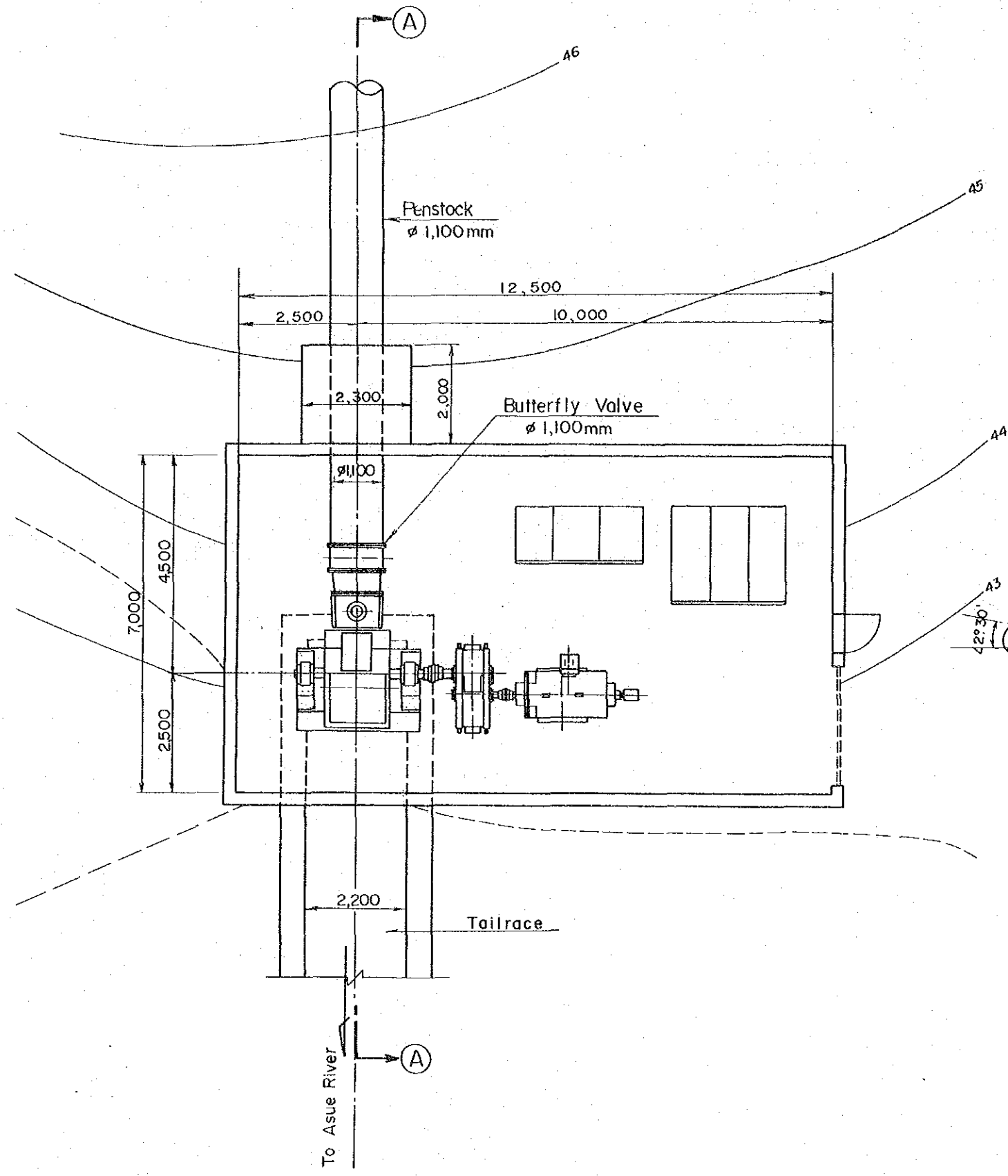


0 5m

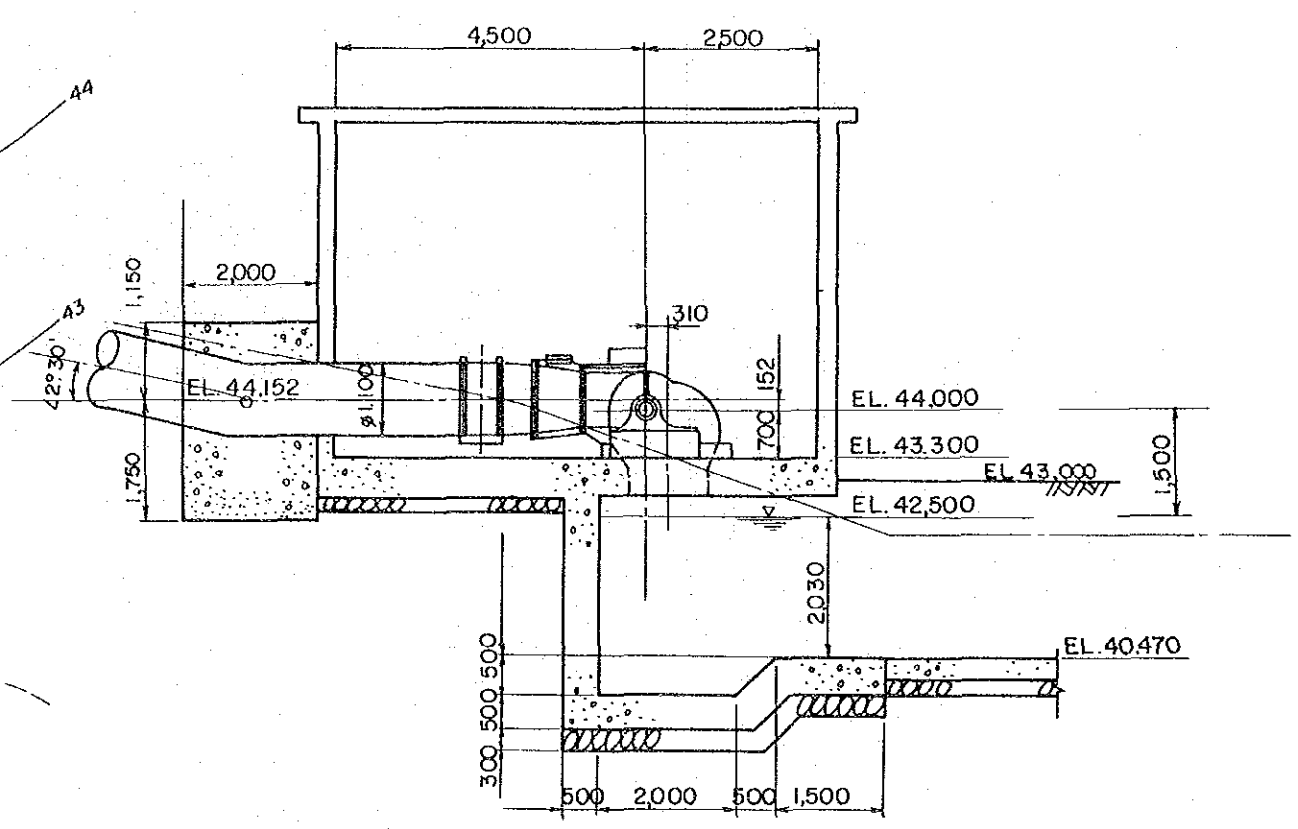
|   |          |
|---|----------|
| REPUBLIC OF THE PHILIPPINES                       |          |
| NATIONAL IRRIGATION ADMINISTRATION                |          |
| ASUE RIVER BASIN AGRICULTURAL DEVELOPMENT PROJECT |          |
| Section of Dam site Power Station                 |          |
| JAPAN INTERNATIONAL COOPERATION AGENCY            |          |
| DWG. NO. 802                                      | SHEET OF |



|   |          |
|---|----------|
| REPUBLIC OF THE PHILIPPINES                       |          |
| NATIONAL IRRIGATION ADMINISTRATION                |          |
| ASUE RIVER BASIN AGRICULTURAL DEVELOPMENT PROJECT |          |
| General Plan and Profile                          |          |
| Canal Route Power Station                         |          |
| JAPAN INTERNATIONAL COOPERATION AGENCY            |          |
| DWG. NO. 803                                      | SHEET 0F |

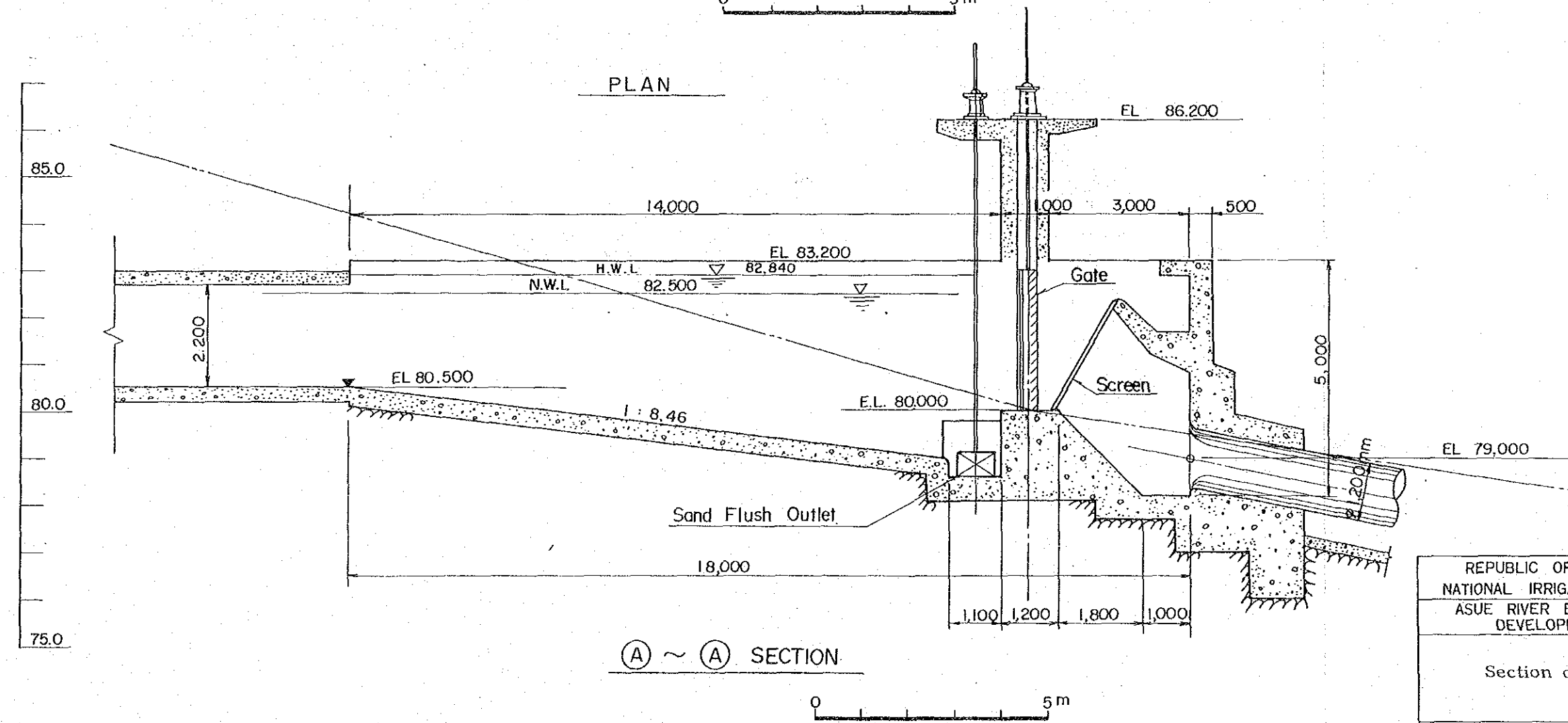
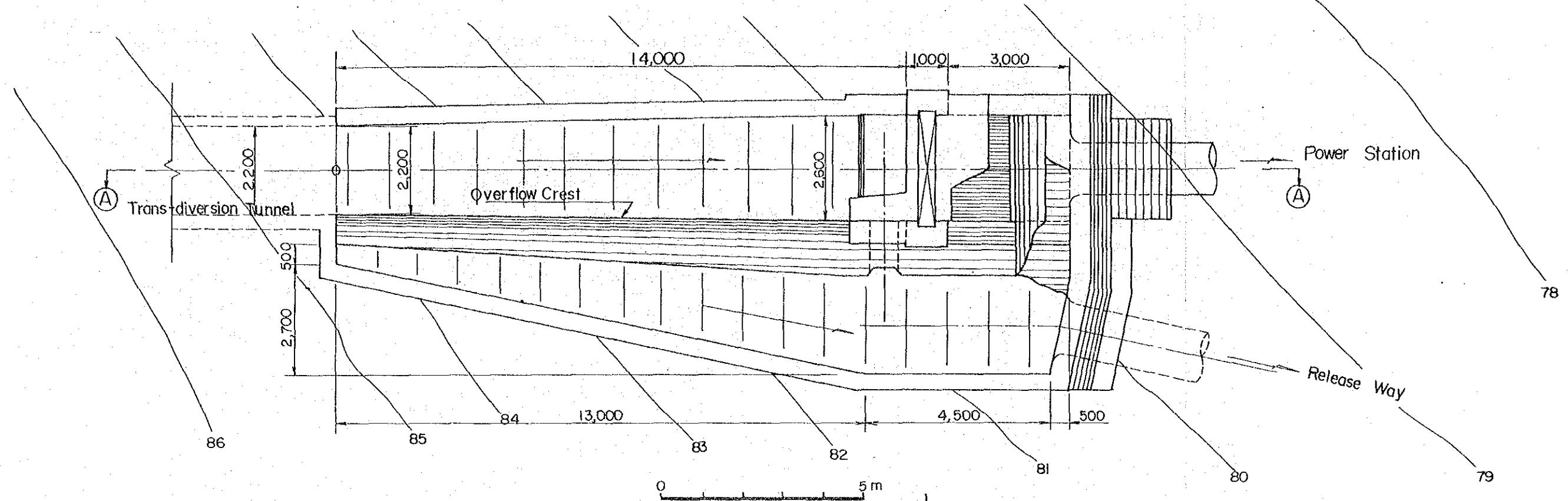


PLAN

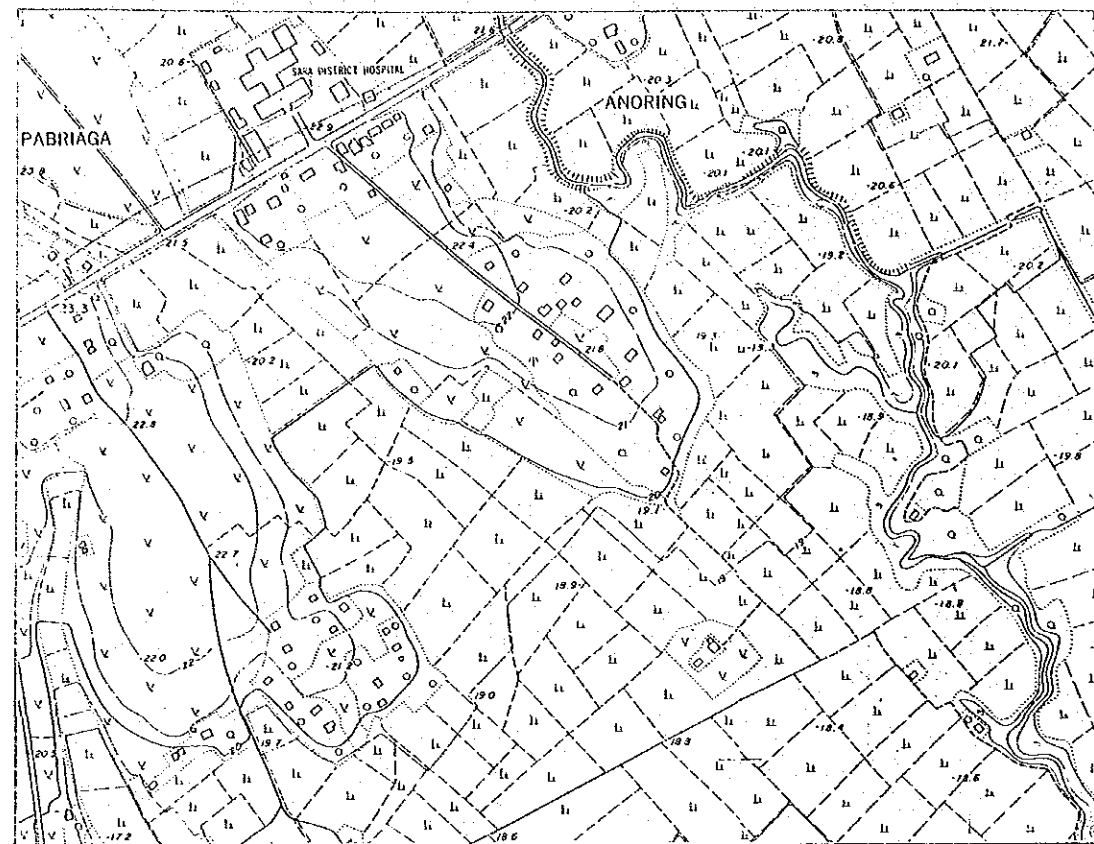


A ~ A SECTION

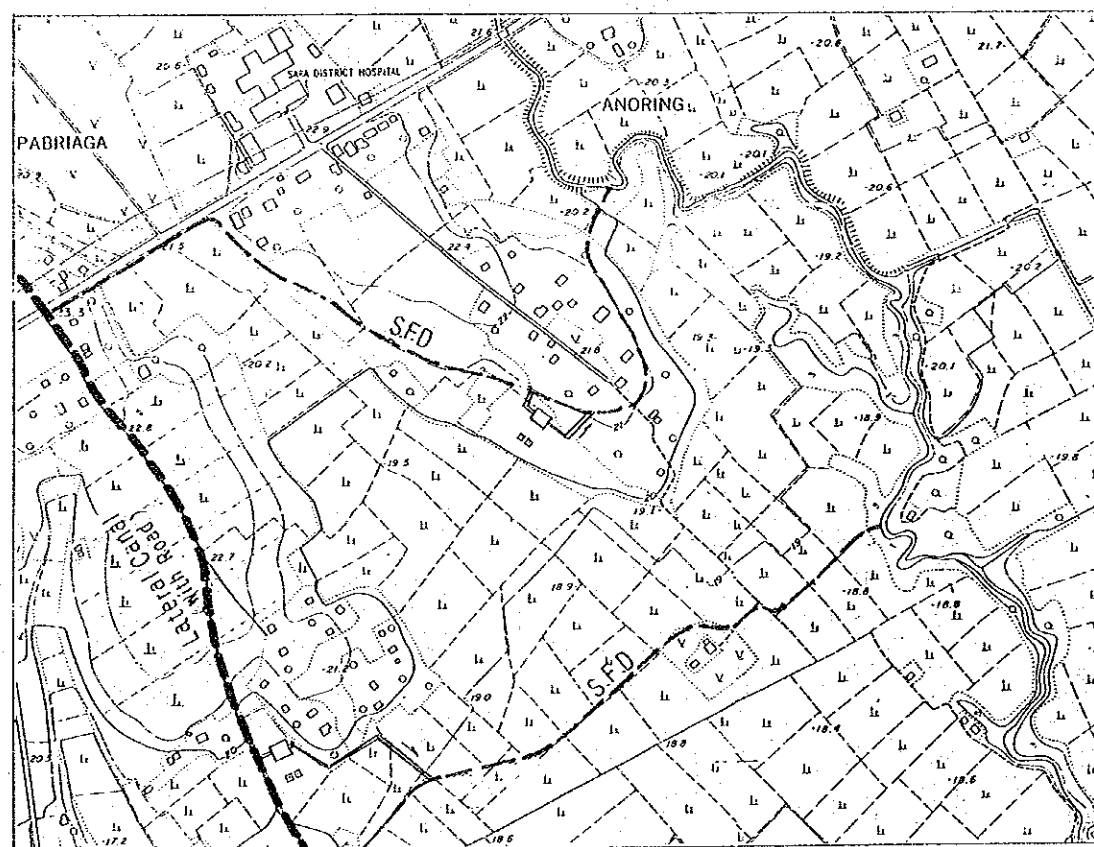
|  |          |
|--|----------|
| REPUBLIC OF THE PHILIPPINES            |          |
| NATIONAL IRRIGATION ADMINISTRATION     |          |
| ASUE RIVER BASIN AGRICULTURAL          |          |
| DEVELOPMENT PROJECT                    |          |
| Layout of                              |          |
| Canal Route Power Station              |          |
| JAPAN INTERNATIONAL COOPERATION AGENCY |          |
| DWG. NO. 804                           | SHEET OF |



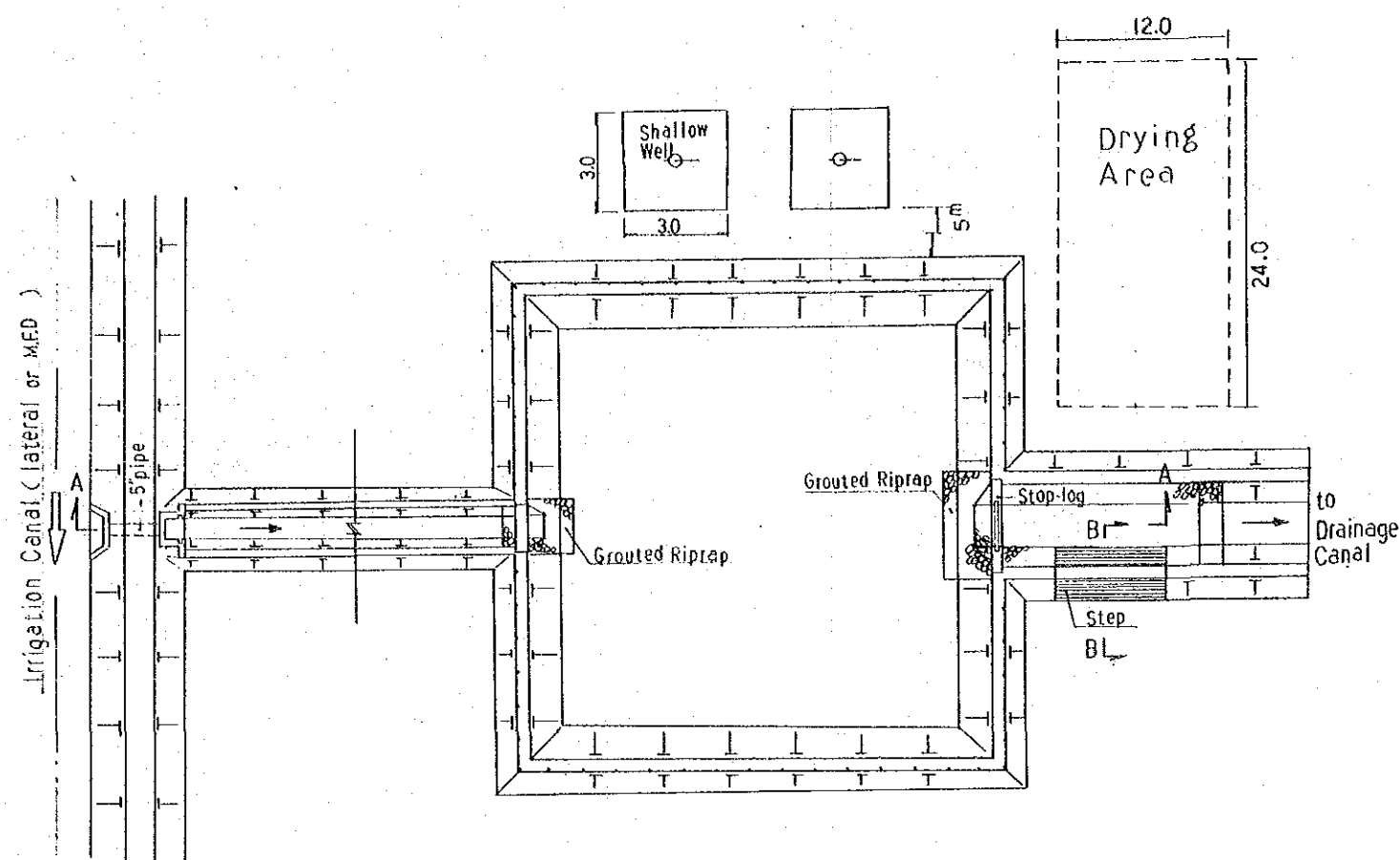
|   |          |
|---|----------|
| REPUBLIC OF THE PHILIPPINES                       |          |
| NATIONAL IRRIGATION ADMINISTRATION                |          |
| ASUE RIVER BASIN AGRICULTURAL DEVELOPMENT PROJECT |          |
| Section of Head Tank                              |          |
| JAPAN INTERNATIONAL COOPERATION AGENCY            |          |
| DWG. NO. 805                                      | SHEET OF |



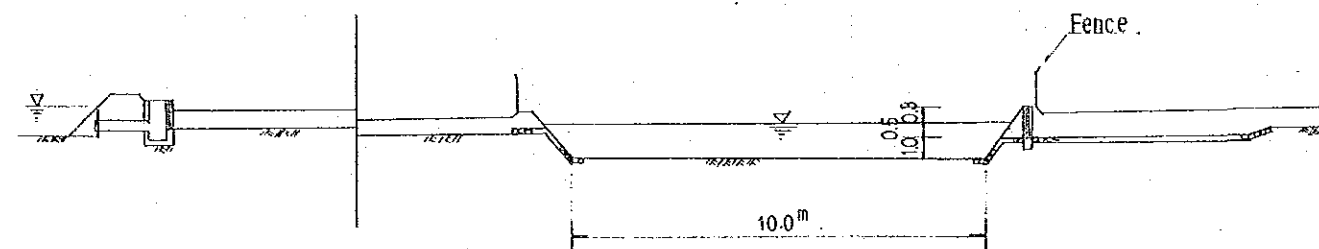
Without Project



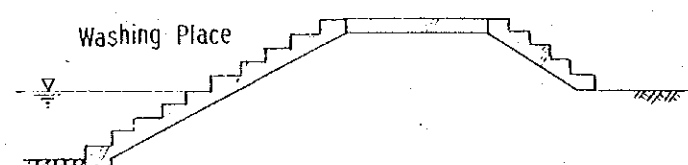
With Project



PLAIN



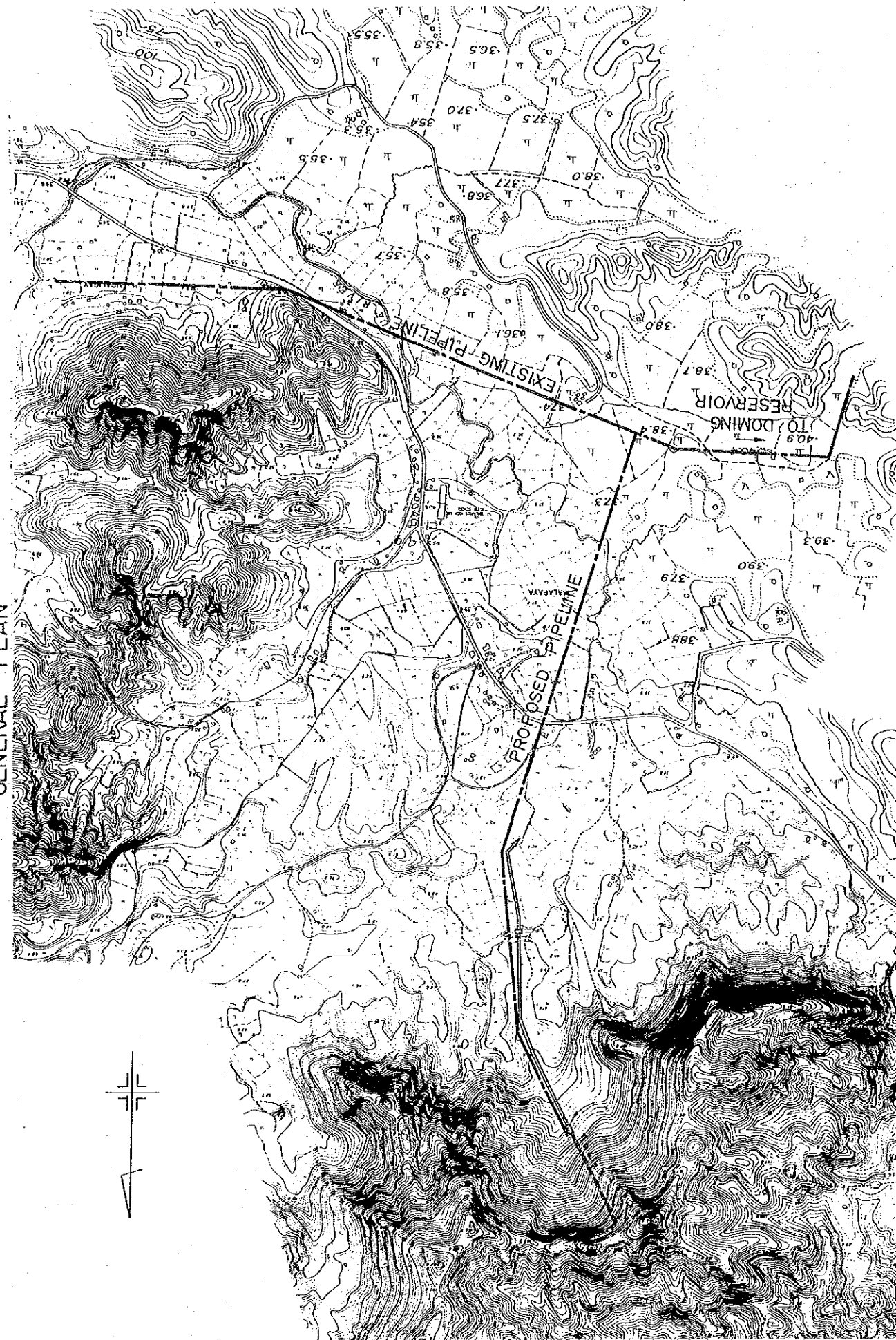
SECTION "A-A"



SECTION "B-B"

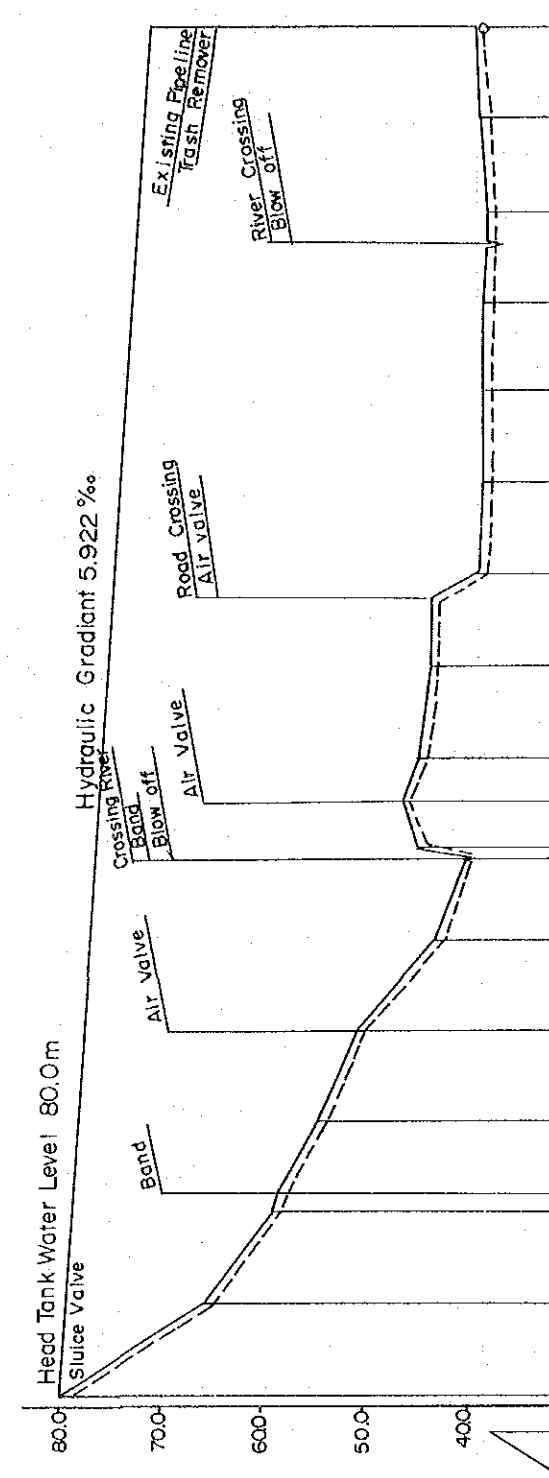
|   |          |
|---|----------|
| REPUBLIC OF THE PHILIPPINES<br>NATIONAL IRRIGATION ADMINISTRATION<br>ASUE RIVER BASIN AGRICULTURAL<br>DEVELOPMENT PROJECT |          |
| General Plan of<br>Integrated Community Center  |          |
| JAPAN INTERNATIONAL COOPERATION AGENCY  |          |
| DWG. NO. 806  | SHEET OF |

# GENERAL PLAN



# GENERAL PLAN

## PROFILE



| STATION | Length (m) | Elevation (m) | Pipe Elevation (m) | Hydraulic Pipe Elevation (m) |
|---------|------------|---------------|--------------------|------------------------------|
| NO. 0   | 0          | 80.0          | 79.0               | 80.0                         |
| NO. 1   | 100        | 65.0          | 64.0               | 79.41                        |
| NO. 2   | 200        | 58.5          | 57.5               | 78.82                        |
| + 20    | 220        | 58.0          | 57.0               | 78.70                        |
| NO. 3   | 300        | 54.0          | 53.0               | 78.22                        |
| NO. 4   | 400        | 50.4          | 49.4               | 77.63                        |
| NO. 5   | 500        | 42.5          | 41.5               | 77.04                        |
| NO. 6   | 600        | 44.0          | 43.0               | 76.45                        |
| NO. 7   | 700        | 44.0          | 43.0               | 75.85                        |
| NO. 8   | 800        | 43.0          | 42.0               | 75.26                        |
| + 70    | 870        | 42.8          | 41.8               | 74.85                        |
| NO. 9   | 900        | 38.2          | 37.2               | 74.67                        |
| NO. 10  | 1000       | 37.5          | 36.5               | 74.08                        |
| NO. 11  | 1100       | 37.7          | 36.7               | 73.49                        |
| NO. 12  | 1200       | 37.5          | 36.5               | 72.89                        |
| + 60    | 1260       | 36.0          | 35.0               | 72.54                        |
| NO. 13  | 1300       | 37.3          | 36.3               | 72.30                        |
| NO. 14  | 1400       | 37.9          | 36.9               | 71.71                        |
| NO. 15  | 1500       | 38.4          | 37.4               | 71.12                        |

|   |          |
|---|----------|
| REPUBLIC OF THE PHILIPPINES<br>NATIONAL IRRIGATION ADMINISTRATION<br>ASUE RIVER BASIN AGRICULTURAL<br>DEVELOPMENT PROJECT |          |
| General Layout of<br>Domestic Water supply System   |          |
| JAPAN INTERNATIONAL COOPERATION AGENCY  |          |
| DWG. NO. 807  | SHEET OF |