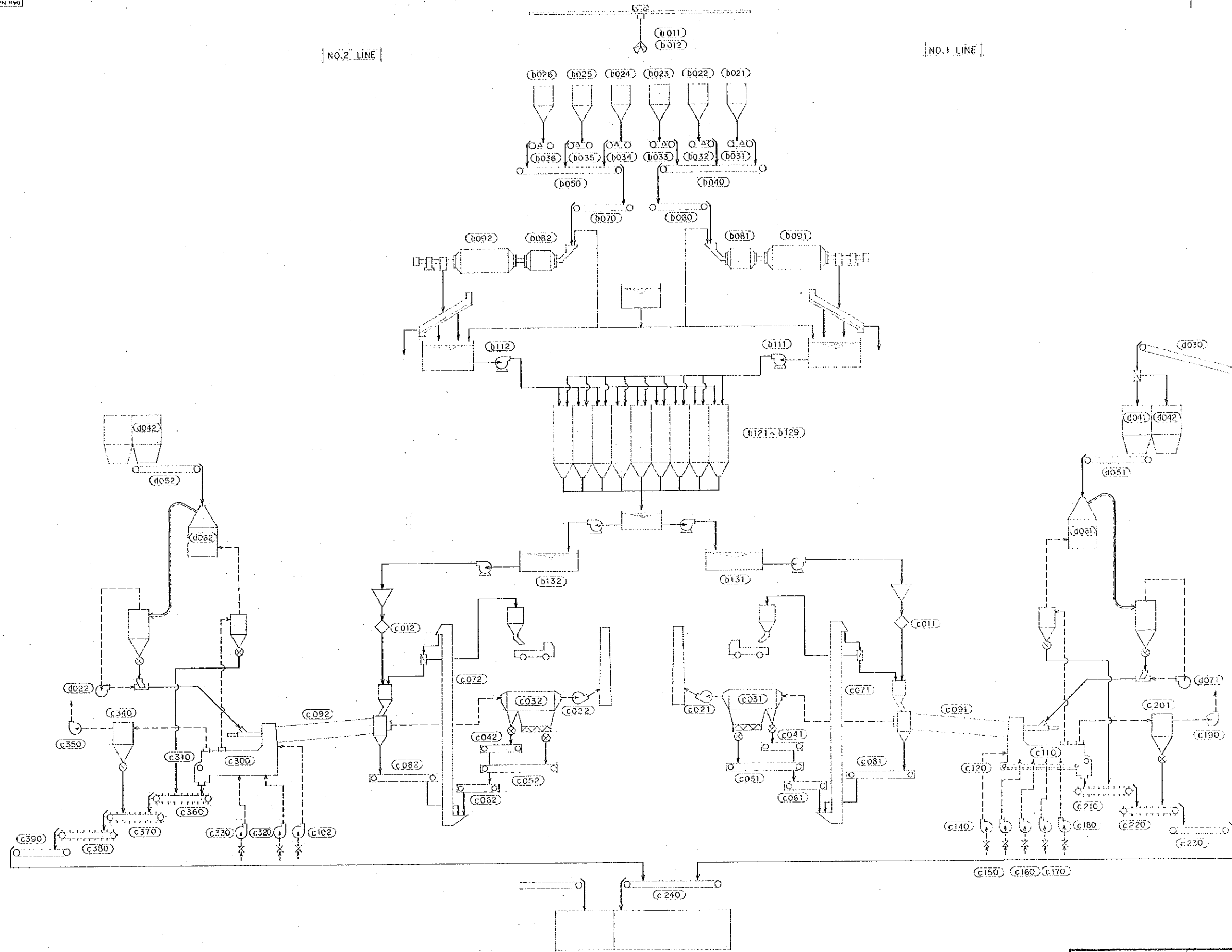
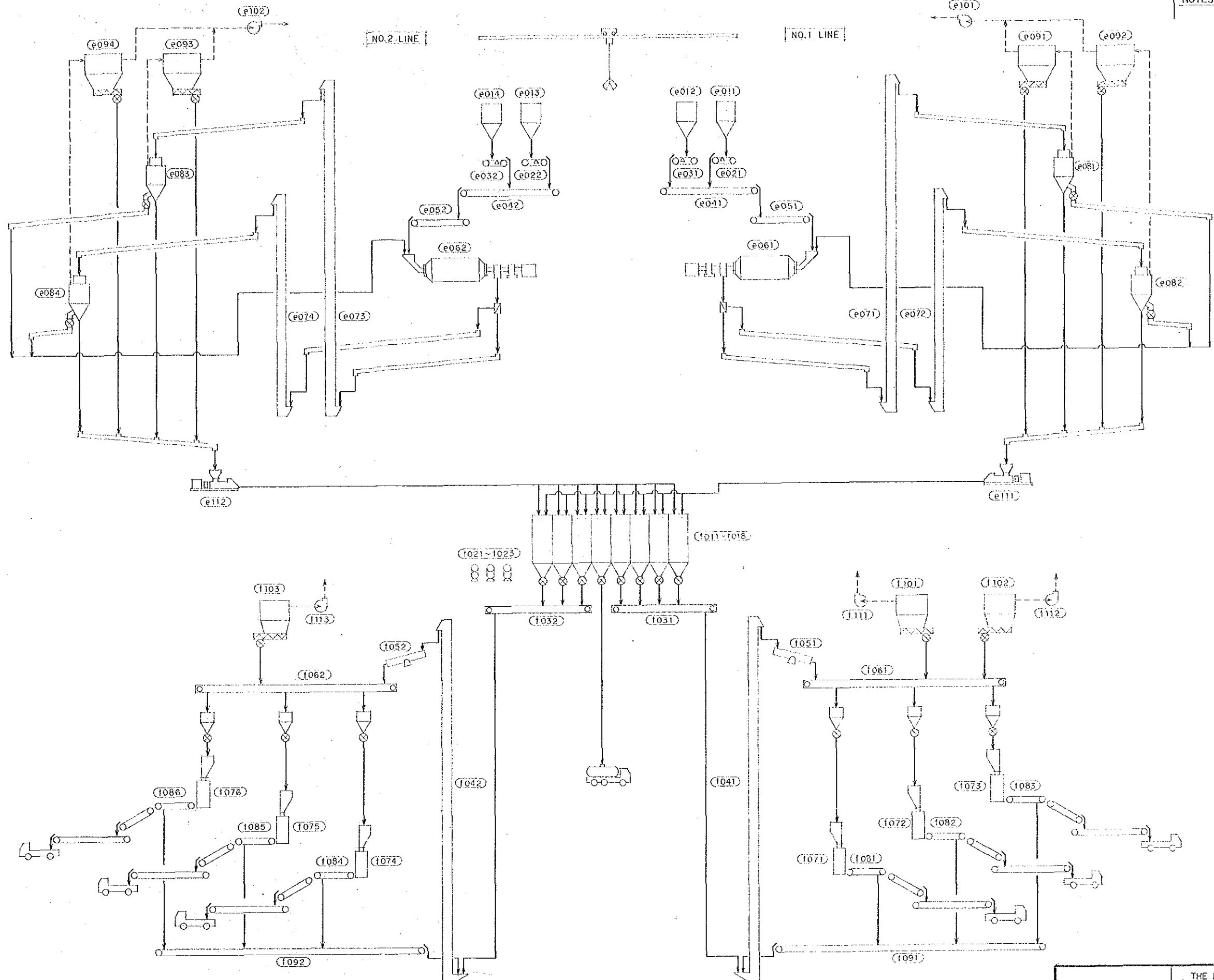


JAPAN INTERNATIONAL COOPERATION AGENCY		THE REHABILITATION AND MODERNIZATION PROJECT OF THE CEMENT PLANT OF ISLAND CEMENT CORPORATION EXISTING PLANT FLOW SHEET (1/3) (RAW MATERIAL RECEIVING DEPARTMENT)					
		APPROVED <i>[Signature]</i>	CHECKED <i>[Signature]</i>	DESIGNED DRAWN <i>[Signature]</i>	SCALE --	DATE MAY.9.86	DWG. No. P-02



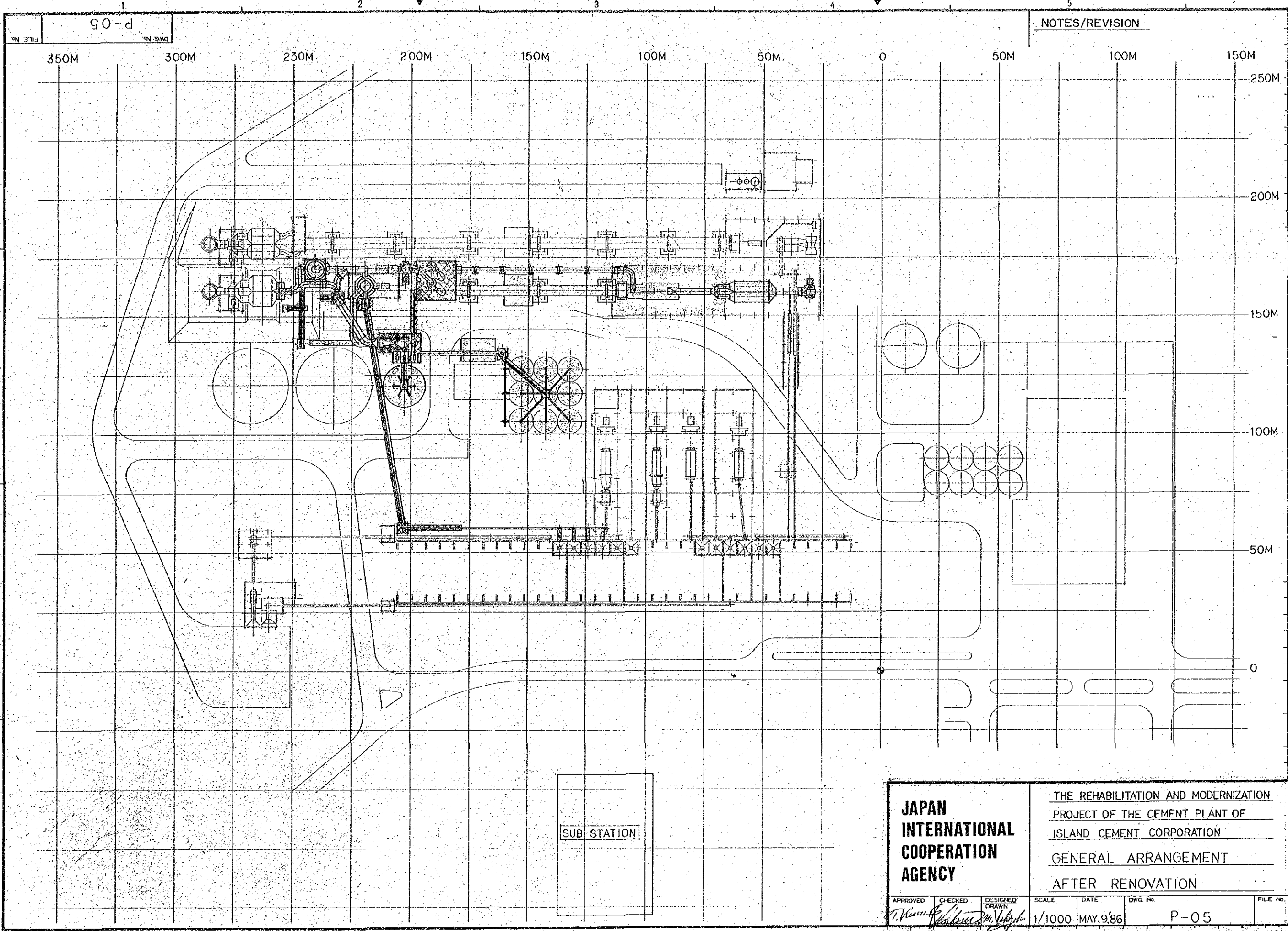
JAPAN INTERNATIONAL COOPERATION AGENCY	THE REHABILITATION AND MODERNIZATION PROJECT OF THE CEMENT PLANT OF ISLAND CEMENT CORPORATION EXISTING PLANT FLOW SHEET (2/3) (RAW MATERIAL GRINDING & BURNING DEPARTMENT)			
	APPROVED <i>[Signature]</i>	CHECKED <i>[Signature]</i>	DESIGNED <i>[Signature]</i>	SCALE ---
			DWG. No. P-03	FILE No.





JAPAN INTERNATIONAL COOPERATION AGENCY		THE REHABILITATION AND MODERNIZATION PROJECT OF THE CEMENT PLANT OF ISLAND CEMENT CORPORATION	
		EXISTING PLANT FLOW SHEET: 3/3 (CEMENT GRINDING & PACKING DEPARTMENT)	
APPROVED	CHECKED	DESIGNED	SCALE
<i>[Signature]</i>	<i>[Signature]</i>	<i>[Signature]</i>	
		DATE	DWG. NO.
		MAY. 9.86	P-04





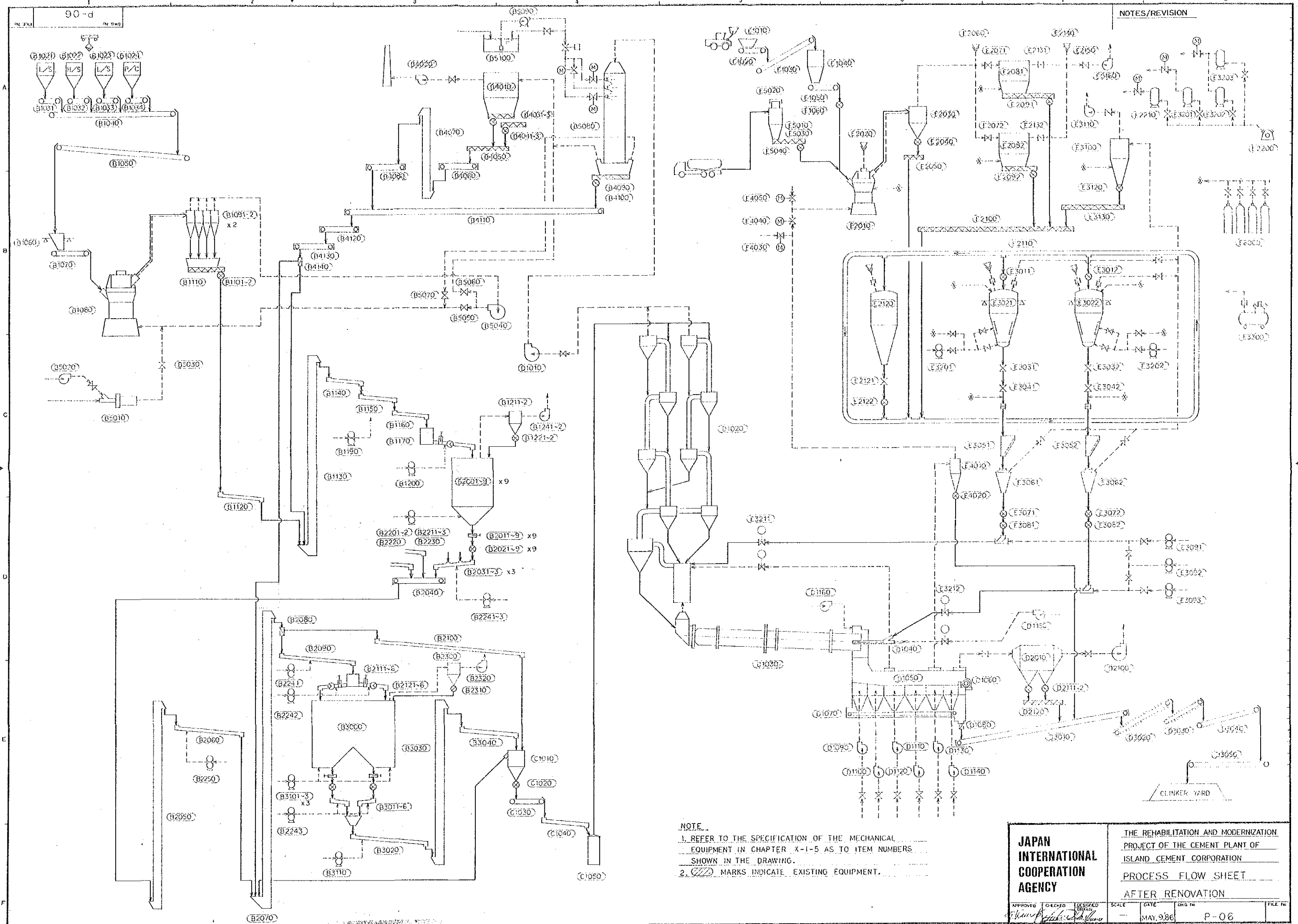
NOTES/REVISION

FILE No. P-05

JAPAN INTERNATIONAL COOPERATION AGENCY		THE REHABILITATION AND MODERNIZATION PROJECT OF THE CEMENT PLANT OF ISLAND CEMENT CORPORATION			
		GENERAL ARRANGEMENT AFTER RENOVATION			
APPROVED	CHECKED	DESIGNED DRAWN	SCALE	DATE	DWG. No.
<i>T. Yamamoto</i>	<i>M. Nakamura</i>	<i>M. Ishiyama</i>	1/1000	MAY. 9. '86	P-05

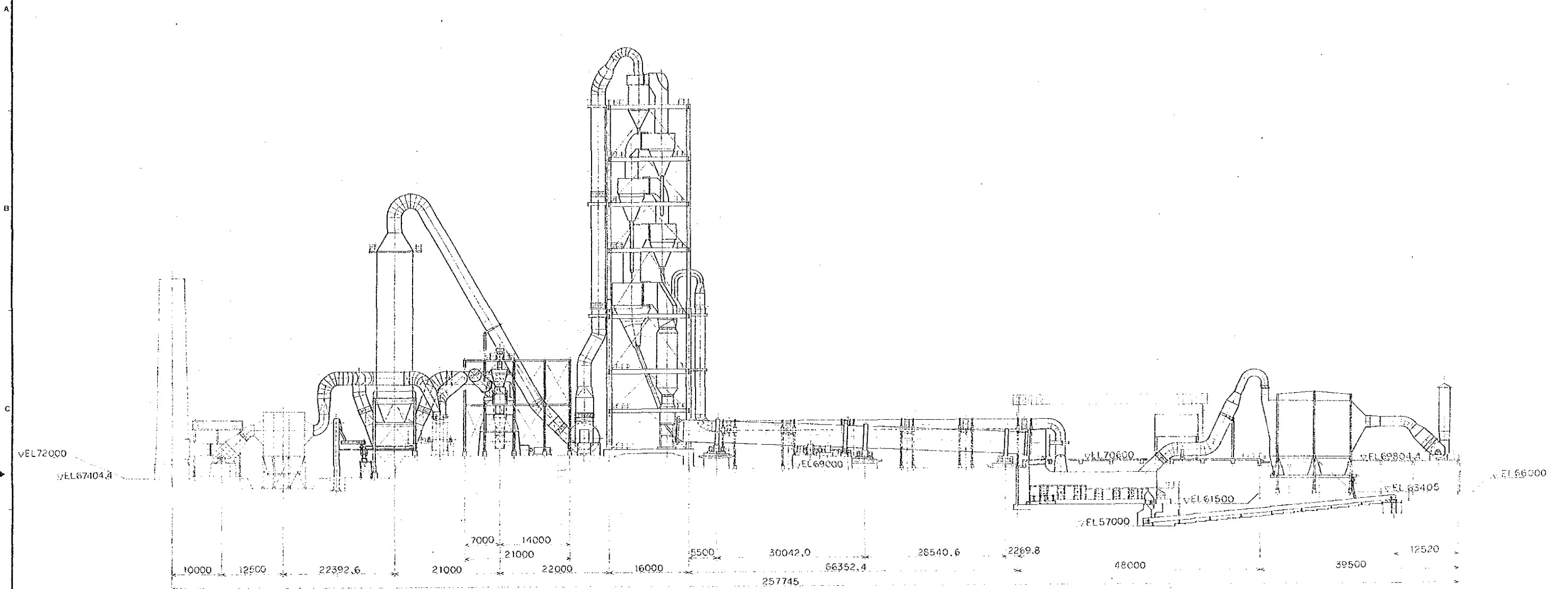
SUB STATION



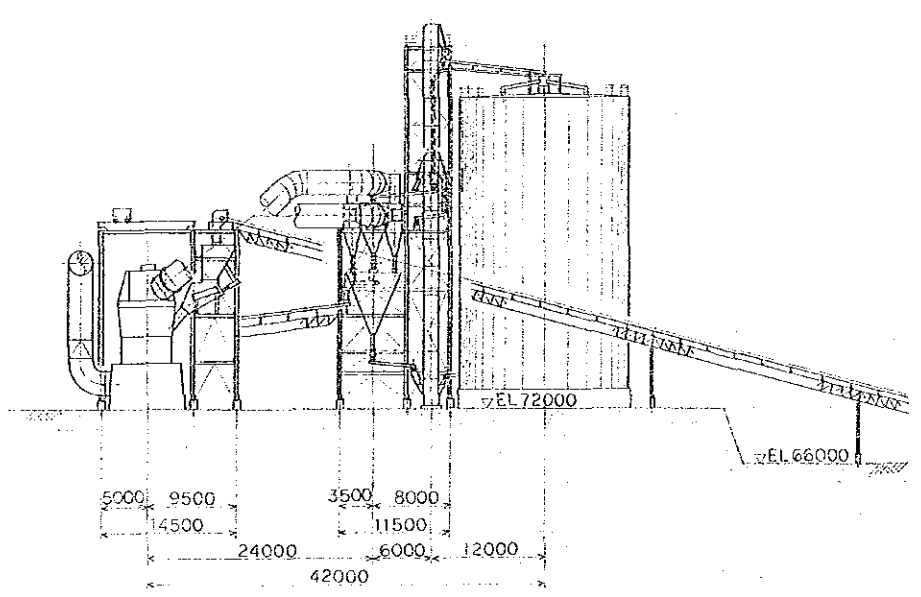


NOTE:
 1. REFER TO THE SPECIFICATION OF THE MECHANICAL EQUIPMENT IN CHAPTER X-1-5 AS TO ITEM NUMBERS SHOWN IN THE DRAWING.
 2. (Hatched) MARKS INDICATE EXISTING EQUIPMENT.

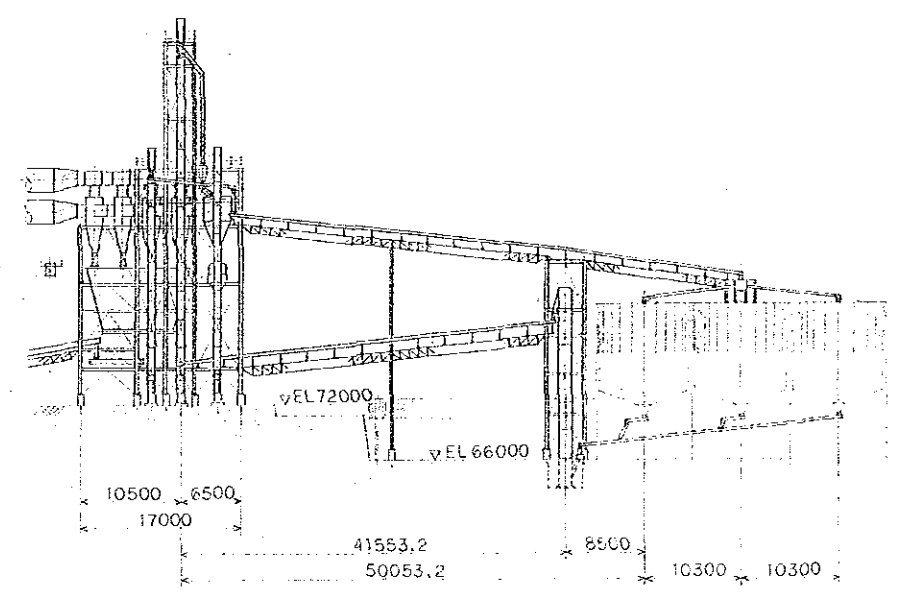
JAPAN INTERNATIONAL COOPERATION AGENCY			THE REHABILITATION AND MODERNIZATION PROJECT OF THE CEMENT PLANT OF ISLAND CEMENT CORPORATION			
			PROCESS FLOW SHEET AFTER RENOVATION			
APPROVED	CHECKED	DESIGNED	SCALE	DATE	DWG. No.	FILE No.
<i>[Signature]</i>	<i>[Signature]</i>	<i>[Signature]</i>		MAY, 9.86	P-06	



VIEW A-A



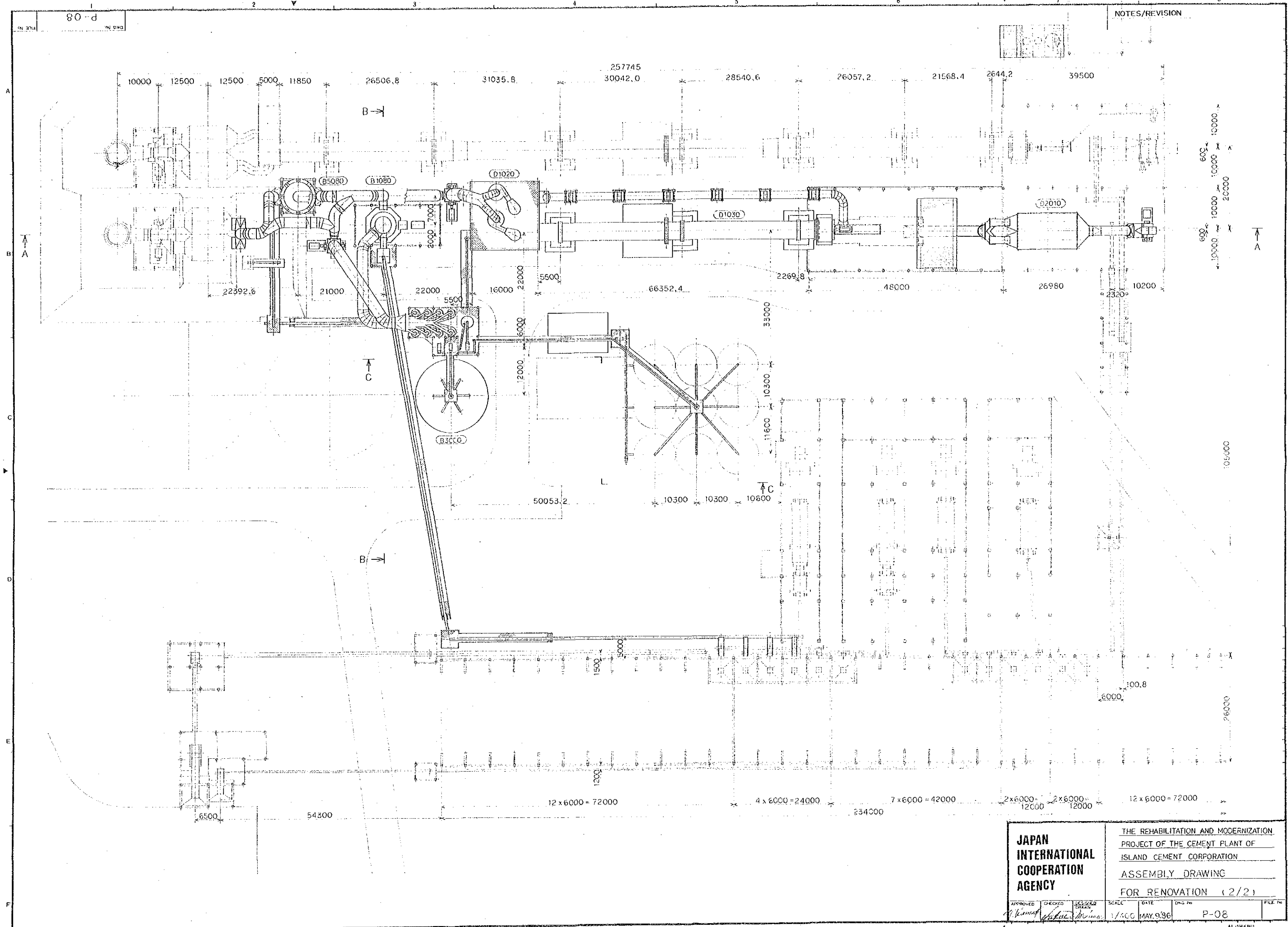
VIEW B-B



VIEW C-C

JAPAN INTERNATIONAL COOPERATION AGENCY		THE REHABILITATION AND MODERNIZATION PROJECT OF THE CEMENT PLANT OF ISLAND CEMENT CORPORATION			
		ASSEMBLY DRAWING FOR RENOVATION (1/2)			
APPROVED	CHECKED	DESIGNED	SCALE	DATE	DWG. NO.
<i>[Signature]</i>	<i>[Signature]</i>	<i>[Signature]</i>	1/400	MAY 9 '86	P-07



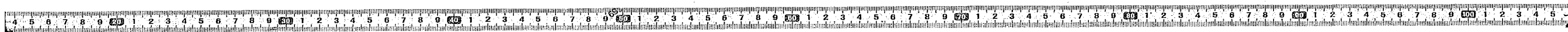


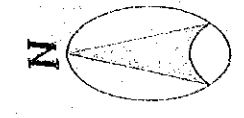
JAPAN INTERNATIONAL COOPERATION AGENCY

THE REHABILITATION AND MODERNIZATION PROJECT OF THE CEMENT PLANT OF ISLAND CEMENT CORPORATION

ASSEMBLY DRAWING FOR RENOVATION (2/2)

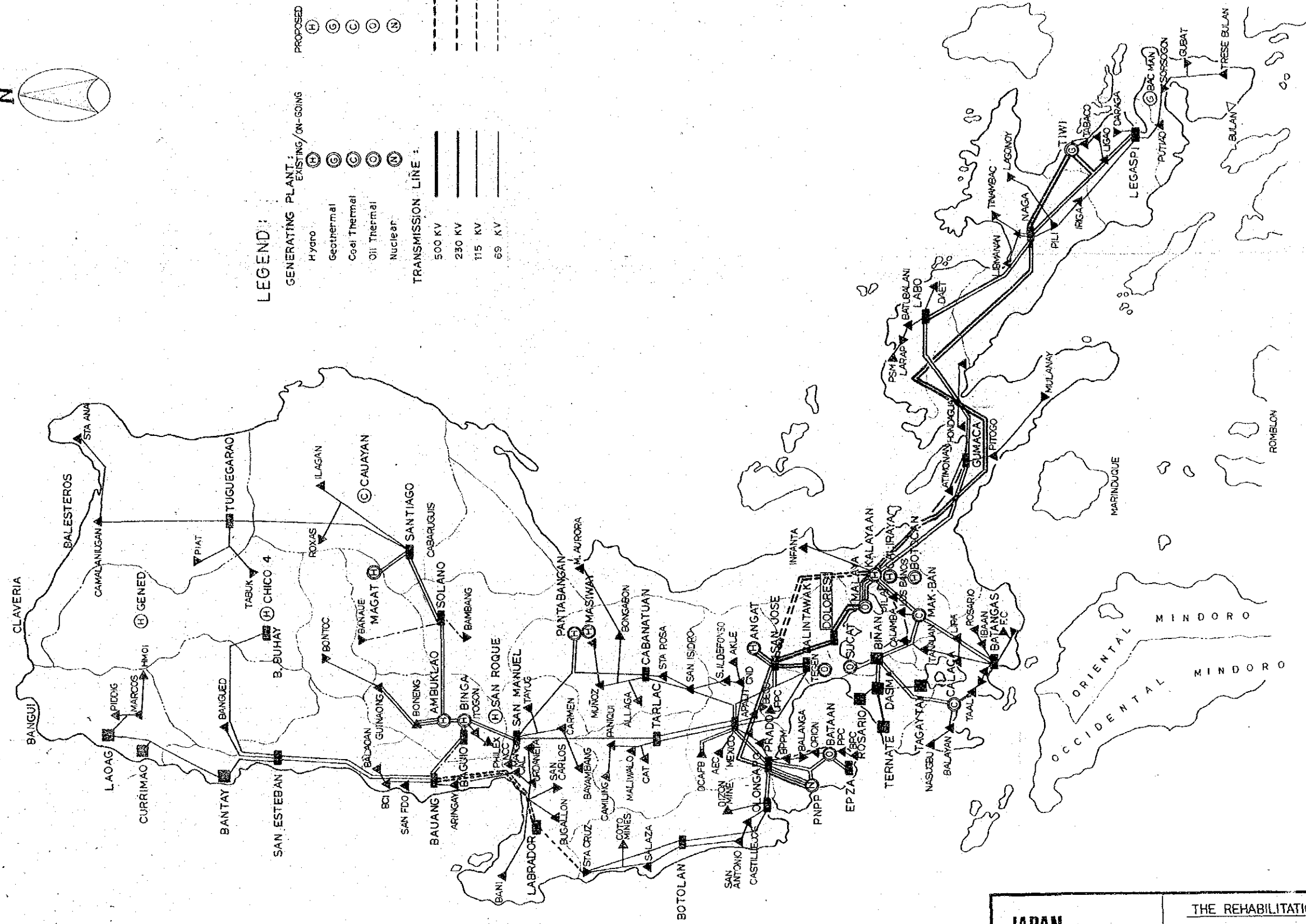
APPROVED: [Signature] CHECKED: [Signature] DRAWN: [Signature] SCALE: 1/500 DATE: MAY. 9. 86 FILE No: P-08





LEGEND:

- GENERATING PLANT:**
 EXISTING/ON-GOING: (H) (C) (C) (C) (N)
 PROPOSED: (H) (C) (C) (C) (N)
- Hydro (H)
 Geothermal (C)
 Coal Thermal (C)
 Oil Thermal (C)
 Nuclear (N)
- TRANSMISSION LINE:**
 500 KV (thick solid line)
 230 KV (medium solid line)
 115 KV (thin solid line)
 69 KV (dashed line)

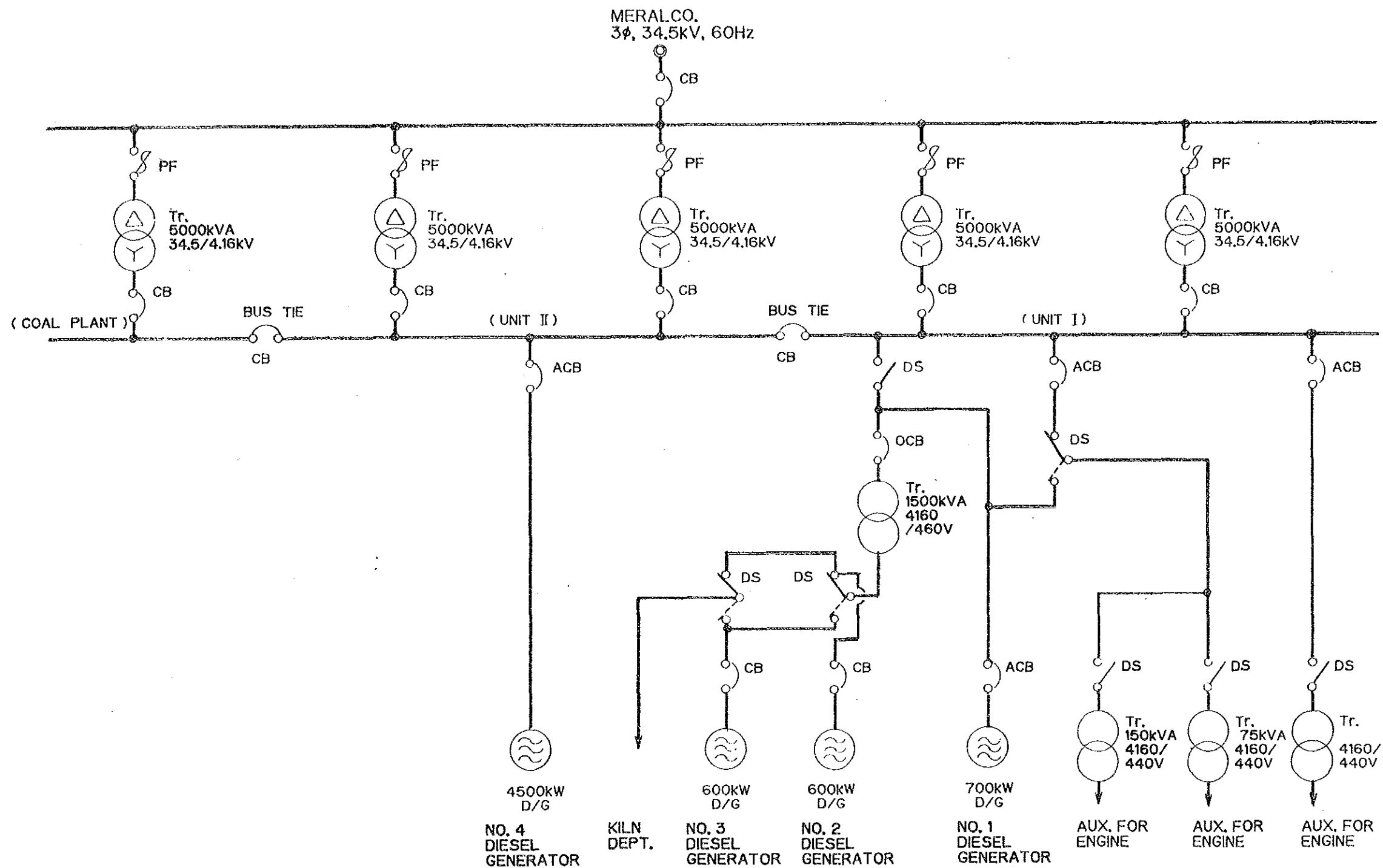


**JAPAN
INTERNATIONAL
COOPERATION
AGENCY**

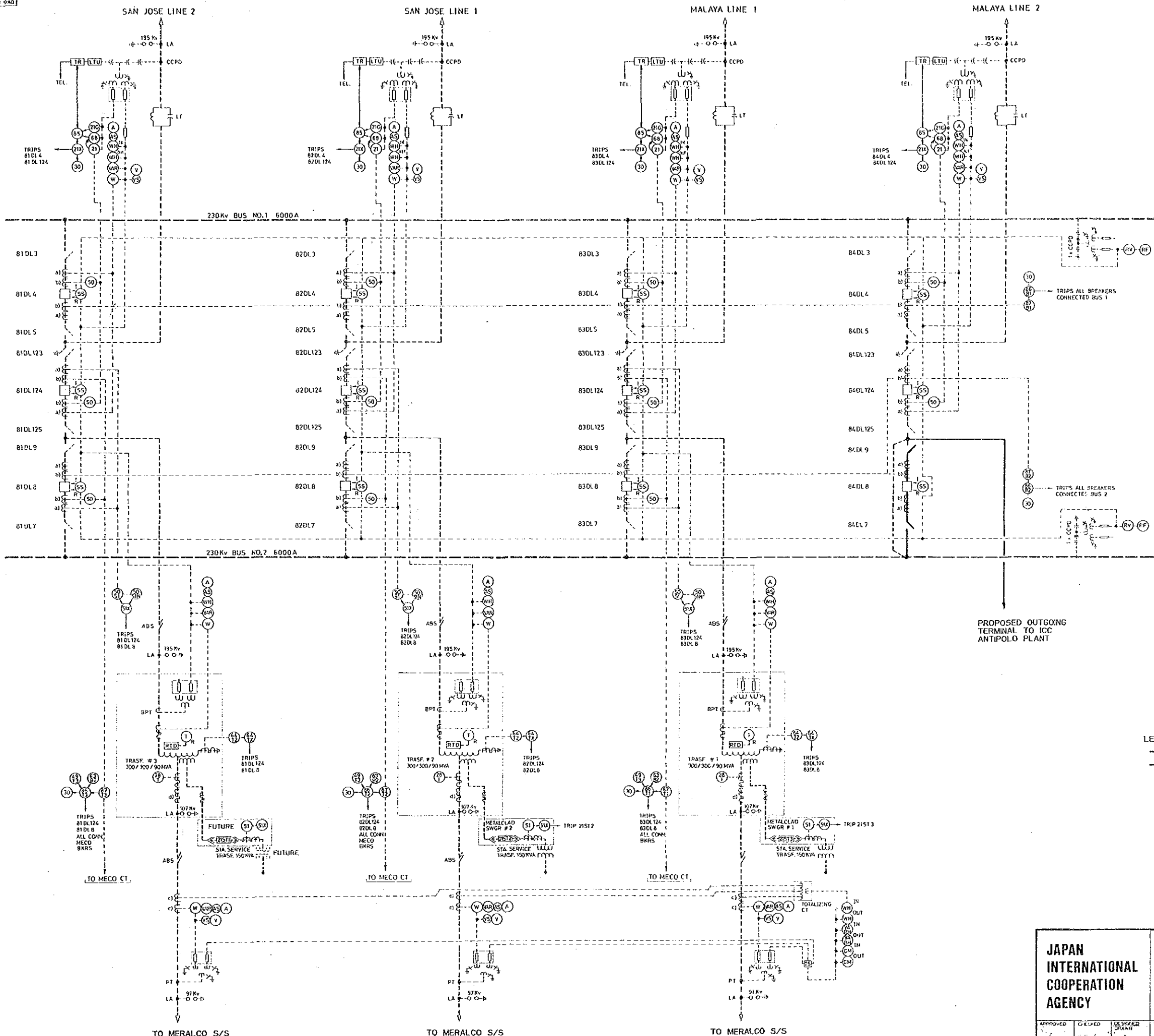
THE REHABILITATION AND MODERNIZATION
PROJECT OF THE CEMENT PLANT OF
ISLAND CEMENT CORPORATION
LUZON GRID MAP
OF POWER SUPPLY

APPROVED <i>[Signature]</i>	CHECKED <i>[Signature]</i>	DESIGNER DRAWN	SCALE	DATE MAR. 1, 1986	DWG. No. E-01	FILE No.
--------------------------------	-------------------------------	-------------------	-------	-------------------------	------------------	----------





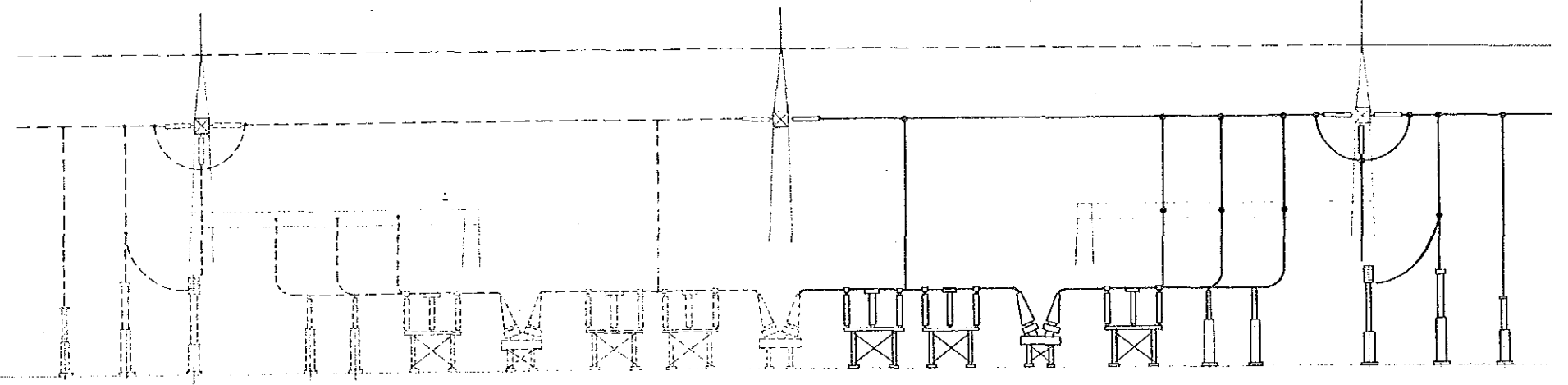
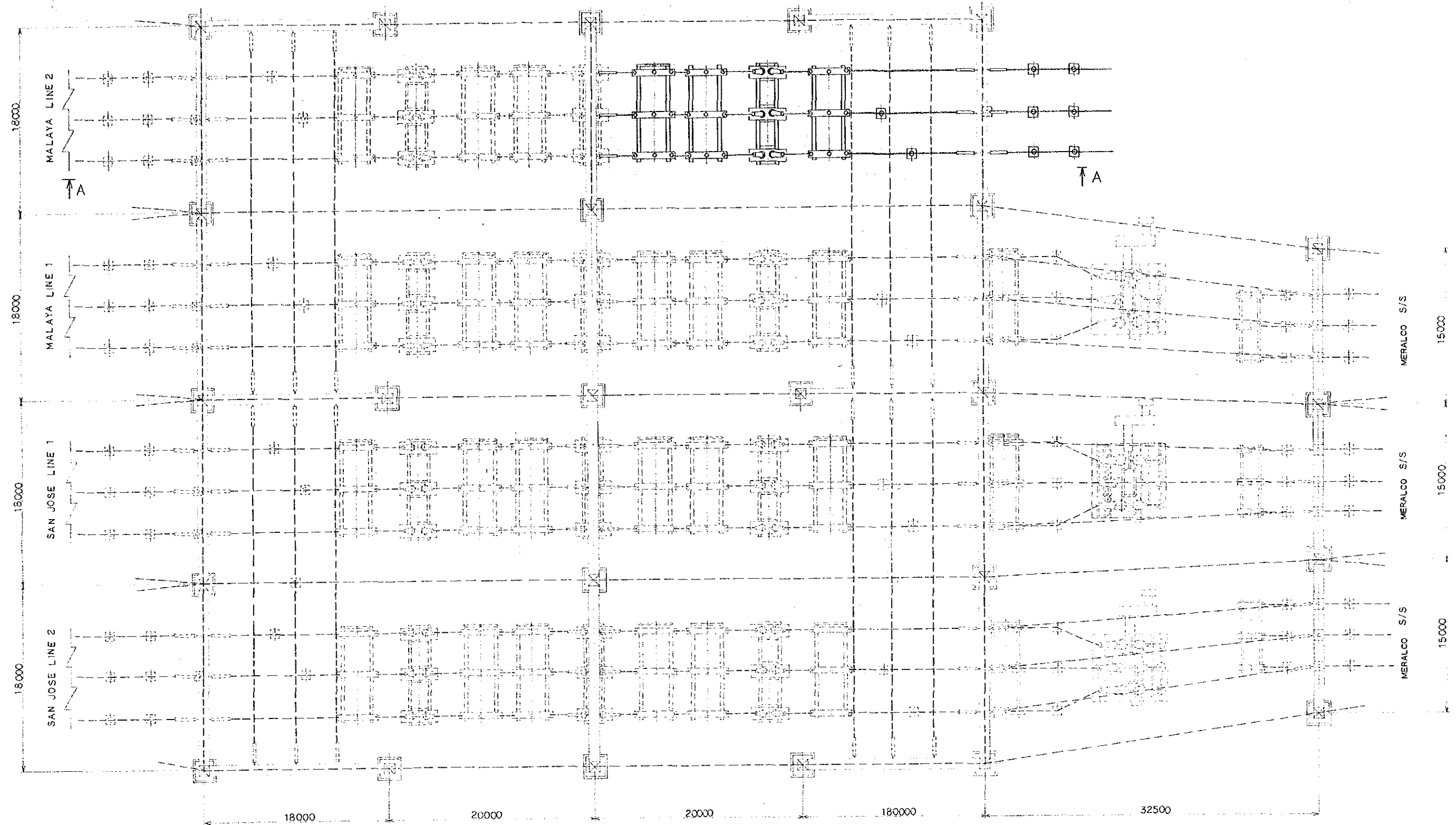
JAPAN INTERNATIONAL COOPERATION AGENCY			THE REHABILITATION AND MODERNIZATION PROJECT OF THE CEMENT PLANT OF ISLAND CEMENT CORPORATION			
			SINGLE LINE DIAGRAM OF POWER RECEIVING AND GENERATION AT ANTIPOLLO PLANT			
APPROVED	CHECKED	DESIGNED DRAWN	SCALE	DATE	DWG. No.	FILE No.
				MAR.12/86	E-02	



LEGEND:
 - - - - - EXISTING LINE
 _____ PROPOSED LINE

JAPAN INTERNATIONAL COOPERATION AGENCY		THE REHABILITATION AND MODERNIZATION PROJECT OF THE CEMENT PLANT OF ISLAND CEMENT CORPORATION			
		SINGLE LINE DIAGRAM OF DOLORES SUBSTATION			
APPROVED <i>[Signature]</i>	CHECKED <i>[Signature]</i>	DESIGNED <i>[Signature]</i>	SCALE 1:1	DATE MAR. 1, 1986	ENG. NO. E-03
			FILE NO.		





SECTION A - A

JAPAN INTERNATIONAL COOPERATION AGENCY		THE REHABILITATION AND MODERNIZATION PROJECT OF THE CEMENT PLANT OF ISLAND CEMENT CORPORATION			
		ARRANGEMENT OF DOLORES SUBSTATION			
APPROVED <i>[Signature]</i>	CHECKED <i>[Signature]</i>	DESIGNED <i>[Signature]</i>	SCALE 	DATE MAR. 1 1986	FILE NO. E-04



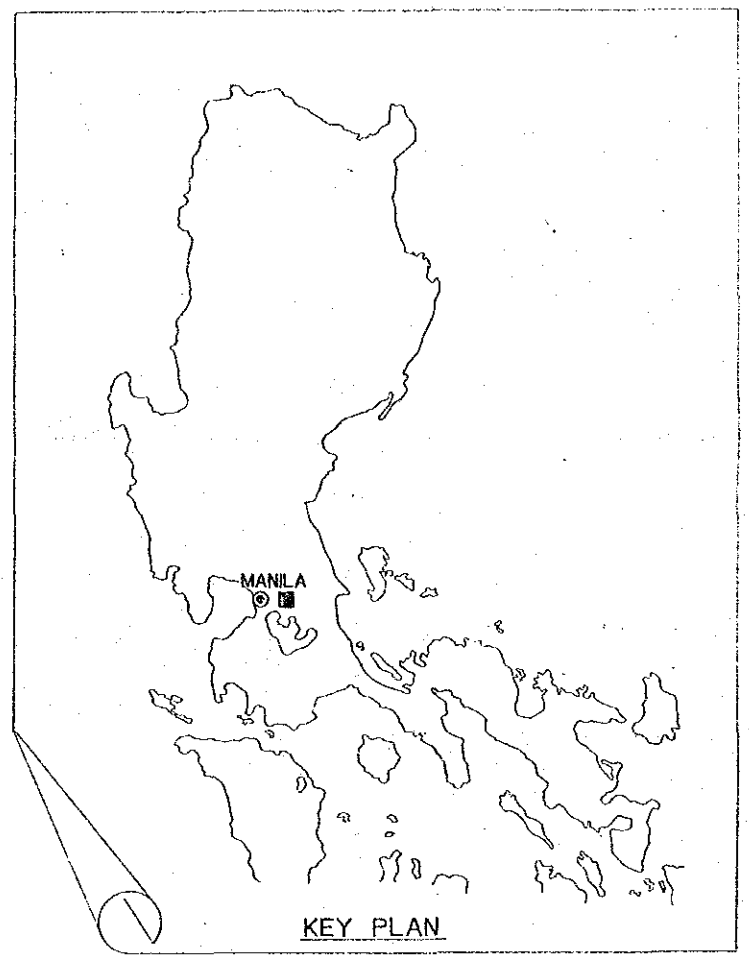
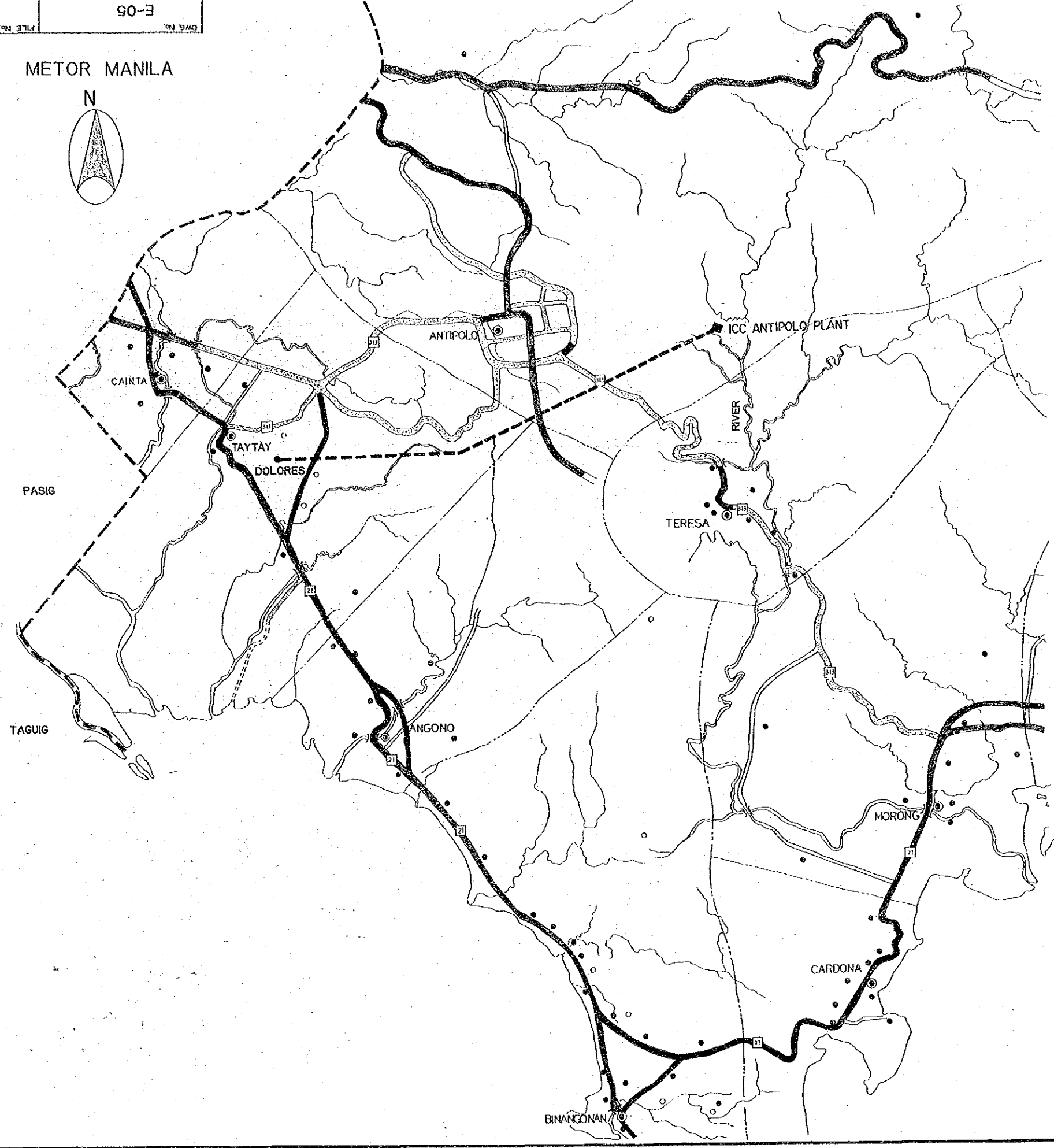
FILE No. E-05
DWG. No.

NOTES/REVISION

METOR MANILA



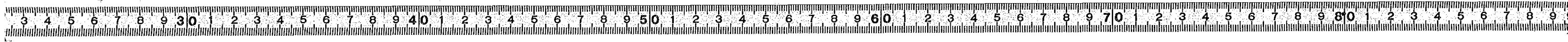
A
B
C
D



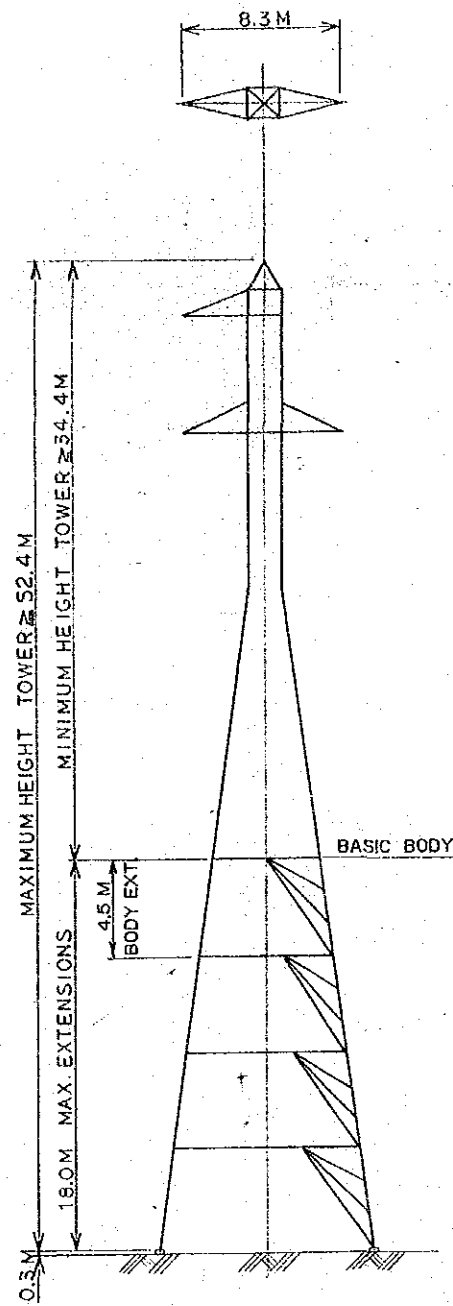
- LEGEND**
- CONCRETE ROAD
 - ASPHALT ROAD
 - MUNICIPALITY
 - ROUTE NUMBER
 - PROPOSED TRANSMISSION LINE

JAPAN INTERNATIONAL COOPERATION AGENCY		THE REHABILITATION AND MODERNIZATION PROJECT OF THE CEMENT PLANT OF ISLAND CEMENT CORPORATION			
		PROPOSED ROUTE OF TRANSMISSION LINE			
APPROVED <i>R. Lopez</i>	CHECKED <i>J. Nojima</i>	DESIGNED-DRAWN	SCALE	DATE MAR. 1 1986	DWG. No. E-05
			FILE No.		

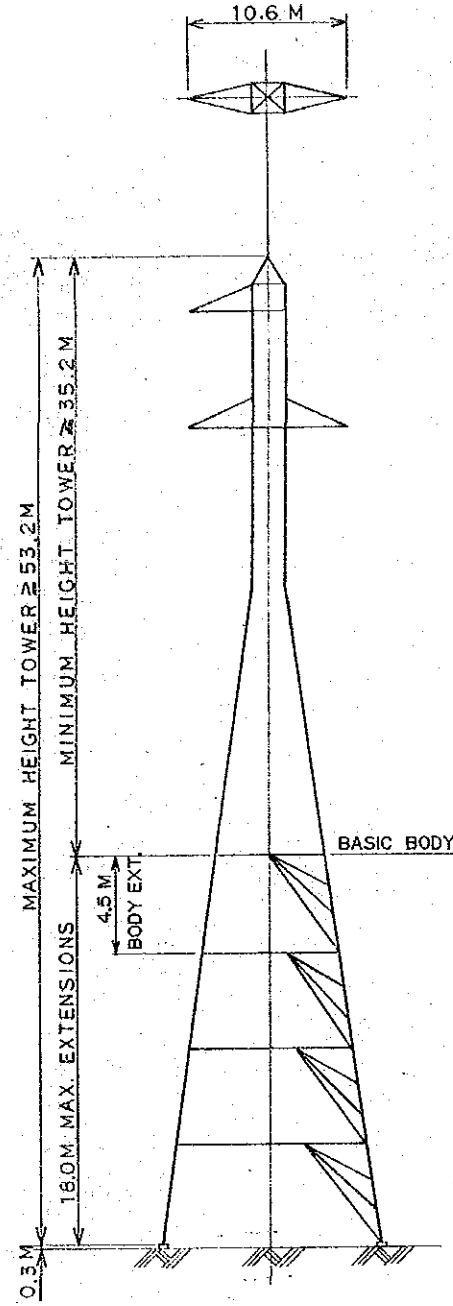
A2 (420X584)



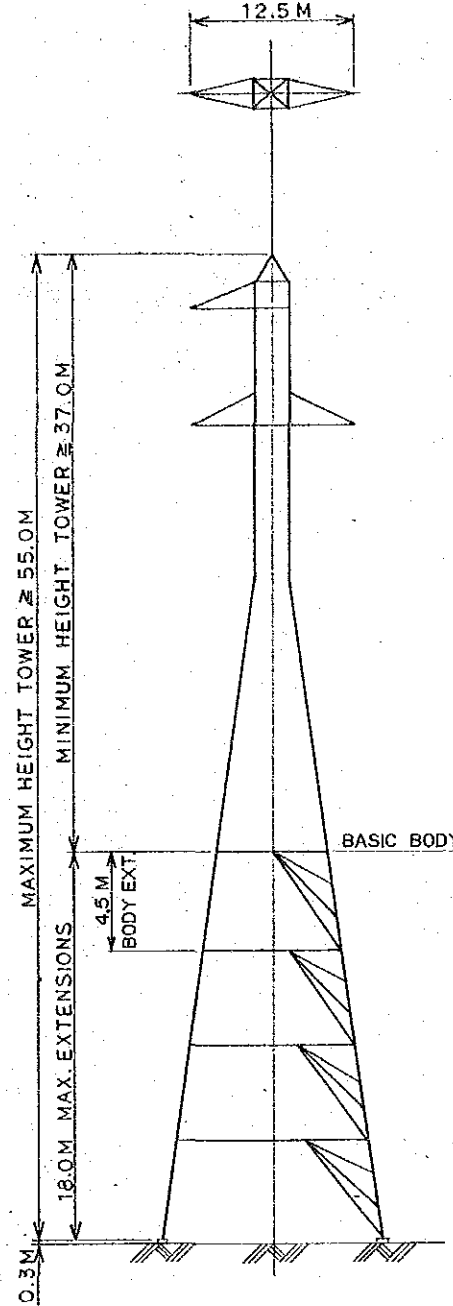
A
B
C
D



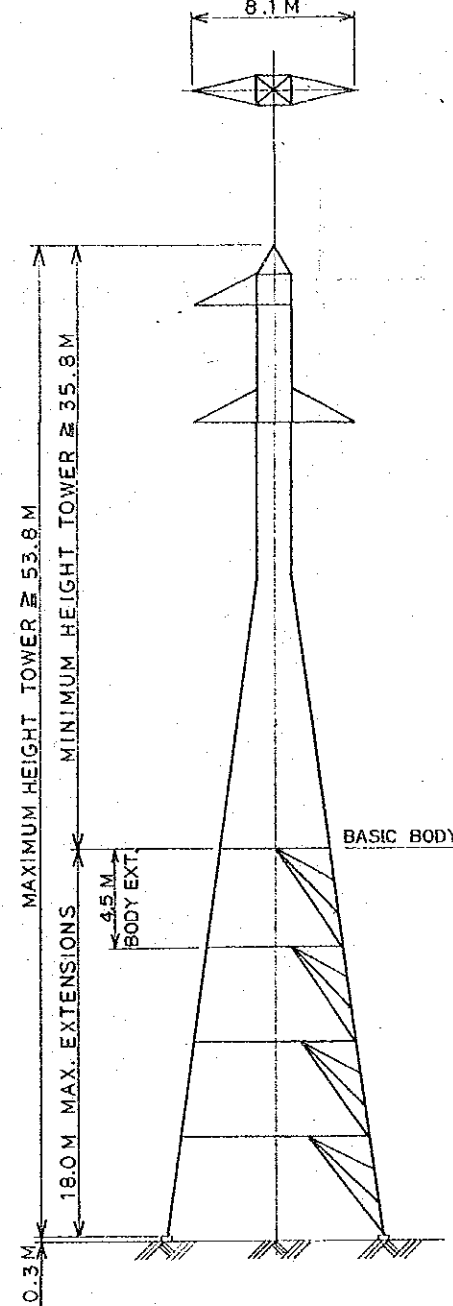
FOR ANGLE 0°



FOR ANGLE 0°~5°

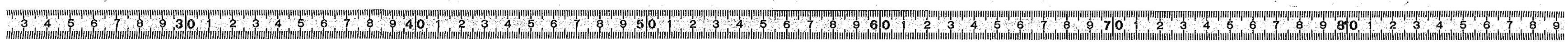


FOR ANGLE 0°~15°

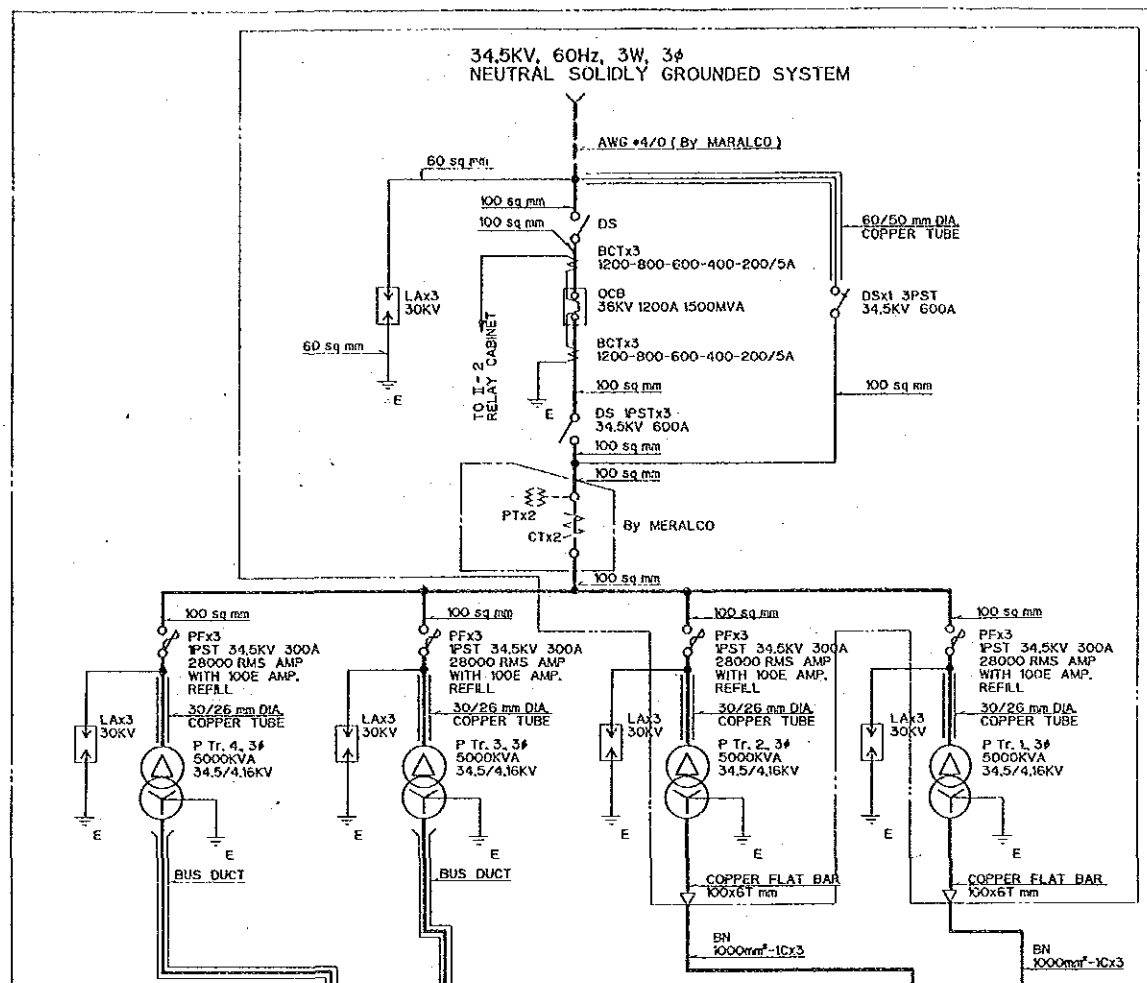


FOR DEAD END

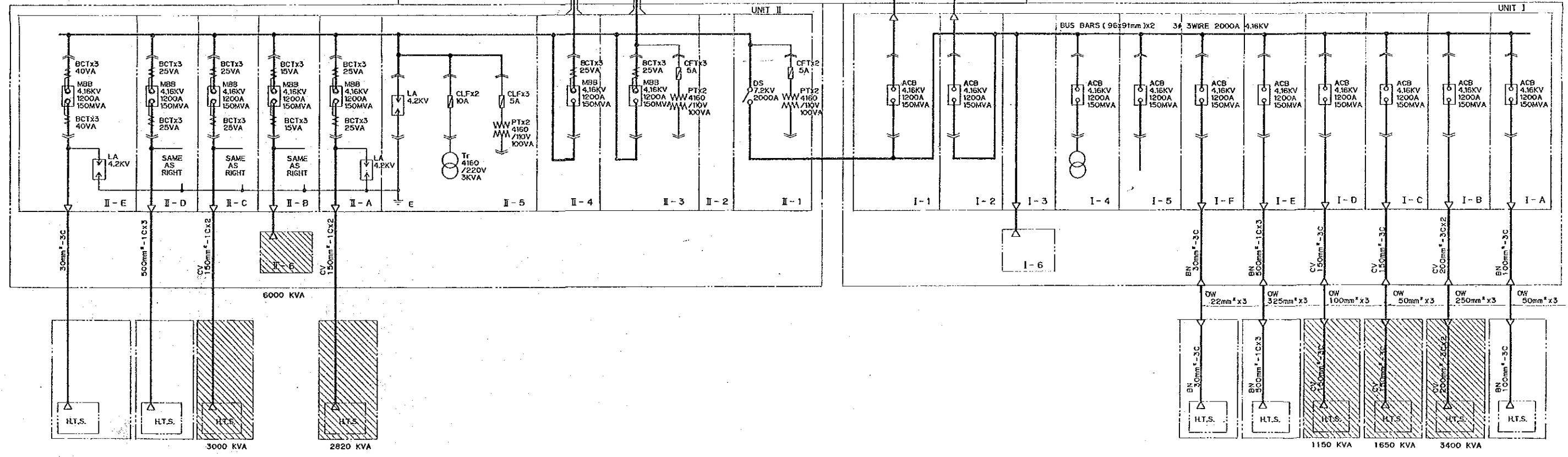
JAPAN INTERNATIONAL COOPERATION AGENCY		THE REHABILITATION AND MODERNIZATION PROJECT OF THE CEMENT PLANT OF ISLAND CEMENT CORPORATION STEEL TRANSMISSION TOWER FOR 230KV LINE			
		APPROVED <i>R. Tsuboi</i>	CHECKED <i>T. Kojima</i>	DESIGNED DRAWN	SCALE
		DWG. No. E-06	FILE No.		



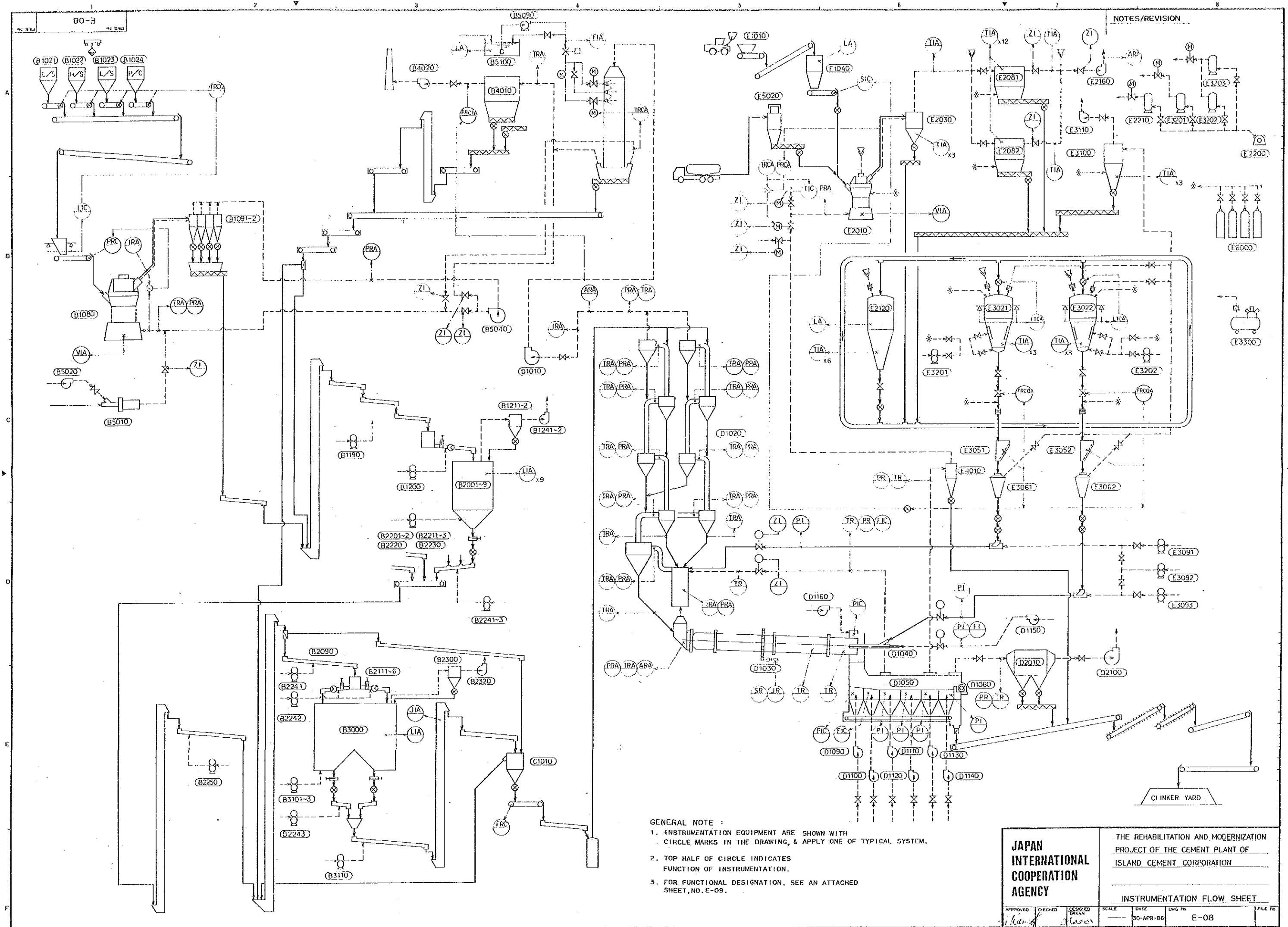
- UNIT I**
- I-1 : TRANSFORMER SECONDARY CUBICLE
 - I-2 : TRANSFORMER SECONDARY CUBICLE
 - I-3 : RELEY CABINET
 - I-4 : AUXILIARY CUBICLE
 - I-5 : FEEDER CUBICLE FOR LIGHTING TRANSFORMER SUBSTATION
 - I-6 : GENERATOR CUBICLE & CAPACITOR CUBICLE
 - I-A : FEEDER CUBICLE FOR LIMESTONE & SHALE CRUSHING DEPT.
 - I-B : FEEDER CUBICLE FOR KILN BURNING DEPT.
 - I-C : FEEDER CUBICLE FOR RAW MEAL STORAGE BLENDING KILN FEED & DUST HANDLING DEPT.
 - I-D : FEEDER CUBICLE FOR
 - I-E : FEEDER CUBICLE FOR FINISH GRINDING DEPT.
 - I-F : FEEDER CUBICLE FOR CEMENT STORAGE & PACKING DEPT.
- UNIT II**
- II-1 : BUS TIE CUBICLE
 - II-2 : RELEY CABINET
 - II-3 : TRANSFORMER SECONDARY CUBICLE
 - II-4 : TRANSFORMER SECONDARY CUBICLE
 - II-5 : AUXILIARY CUBICLE
 - II-6 : CAPACITOR CUBICLE
 - II-A : FEEDER CUBICLE FOR RAW MATERIAL GRINDING DEPT.
 - II-B : FEEDER CUBICLE FOR CAPACITOR
 - II-C : FEEDER CUBICLE FOR HOT GAS EQUIPMENT DEPT.
 - II-D : FEEDER CUBICLE FOR FINISH GRINDING DEPT.
 - II-E : FEEDER CUBICLE FOR QUARRY SITE EQUIPMENT



- GENERAL NOTE**
- 1. THIS DRAWING HAS BEEN ARRANGED BASED ON SINGLE LINE DIAGRAMS (SHEET NO. I-33 & I-39) OF ANTIPOLO PLANT, IRLAND CEMENT CORPORATION.
 - 2. HATCHED H.T.S. SHOWS NEWLY PLANNED EQUIPMENT FOR THE PLANT RENOVATION & OTHERS ARE EXISTING EQUIPMENT AS THEY ARE.



<p>JAPAN INTERNATIONAL COOPERATION AGENCY</p> <p>APPROVED: [Signature] DATED: [Signature] SCALE: [Signature]</p>		<p>THE REHABILITATION AND MODERNIZATION PROJECT OF THE CEMENT PLANT OF ISLAND CEMENT CORPORATION</p>	
		<p>SINGLE LINE DIAGRAM</p>	
		<p>30-APR-86</p>	<p>E-07</p>



NOTES/REVISION

- GENERAL NOTE :
1. INSTRUMENTATION EQUIPMENT ARE SHOWN WITH CIRCLE MARKS IN THE DRAWING, & APPLY ONE OF TYPICAL SYSTEM.
 2. TOP HALF OF CIRCLE INDICATES FUNCTION OF INSTRUMENTATION.
 3. FOR FUNCTIONAL DESIGNATION, SEE AN ATTACHED SHEET, NO. E-09.

JAPAN INTERNATIONAL COOPERATION AGENCY		THE REHABILITATION AND MODERNIZATION PROJECT OF THE CEMENT PLANT OF ISLAND CEMENT CORPORATION			
		INSTRUMENTATION FLOW SHEET			
APPROVED	DESIGNED	DRAWN	SCALE	DATE	DWG. NO.
<i>[Signature]</i>	<i>[Signature]</i>	<i>[Signature]</i>		30-APR-86	E-08

MEANINGS OF FUNCTIONAL DESIGNATION

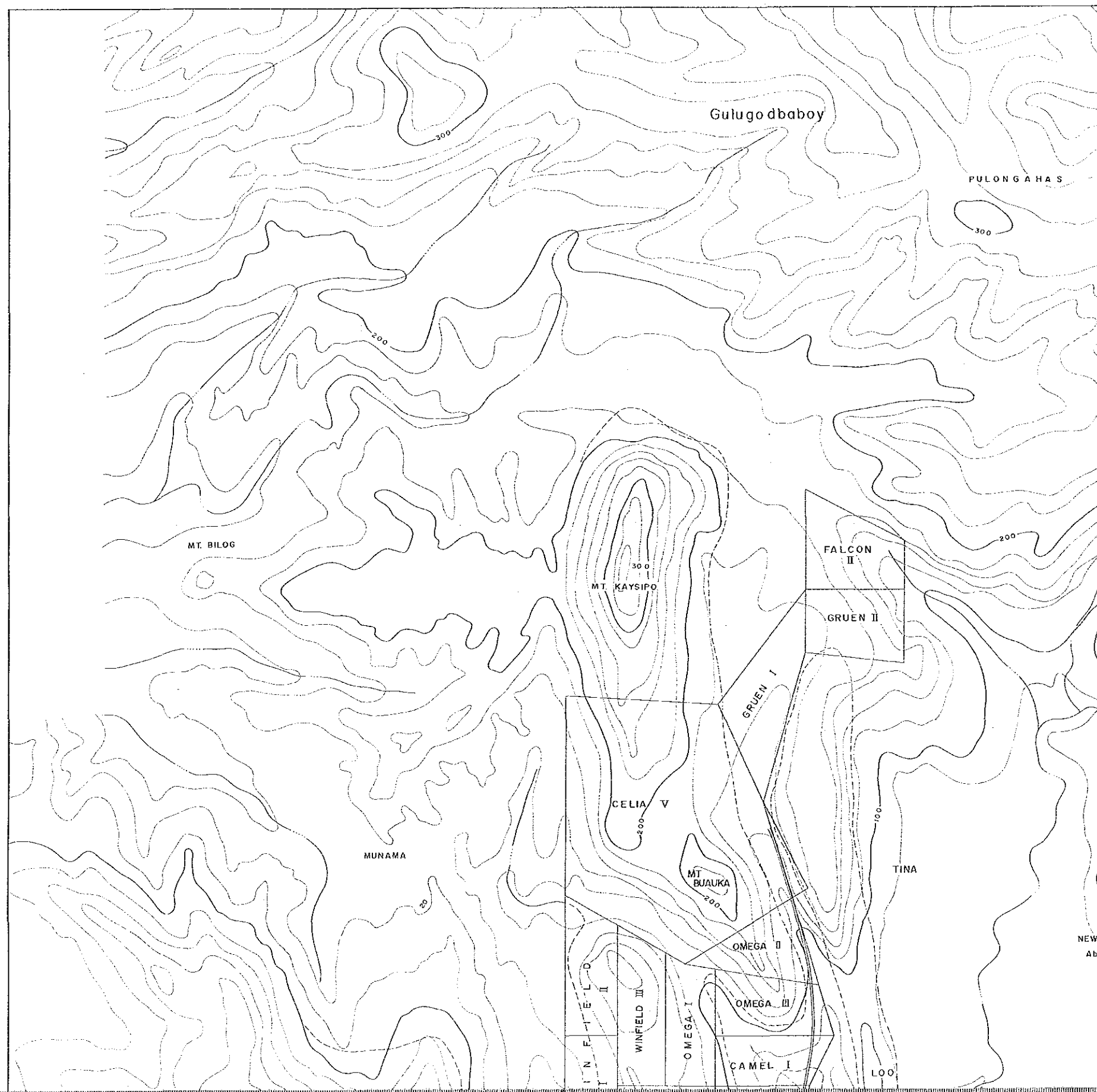
	FIRST LETTER		SUCCEEDING LETTERS
	MEASURED OR INITIATING VARIABLE	MODIFIER	READOUT OR PASSIVE FUNCTION
A	Analysis		Alarm
B	Burner Flame		
C	Conductivity		Control
D	Density	Differential	Distributor
E	Voltage		Detection
F	Flow Rate	Ratio	
G	Gaging		Supervision
H	Hand		High
I	Current		Indicator
J	Power	Scan	
K	Time or Time Schedule		computer control
L	Level		Logging, Low, Lamp
M	Moisture or Humidity		CRT
N	Noise		User's choice
O			Orifice
P	Pressure or Vacuum		Sampling point
Q	Quantity	Integrate or Totalize	Quantity
R	Radioactivity		Record or Print
S	Speed or Frequency	Safety	Switch or Sequence control
T	Temperature		Transmit
U	Multivariable		Multifunction
V	Viscosity or Vibration		Valve or Damper
W	Weight or Force		Well
X	Unclassified		User's choice
Y			Relay, Compute, converter
Z	Position		Safety or Emergency, Drive, Actuate

JAPAN
INTERNATIONAL
COOPERATION
AGENCY

DATE: MAY, 1986

DWG.No.: E-09

Handwritten signature



LIST OF MINING CLAIMS

NAME OF CLAIMS	NO. OF CLAIMS	AREA OF CLAIMS (HECTARES)	PROVEN RESEVS (METRIC TONS)	STATUS OF CLAIMS
LIMESTONE				
Carsec IV	1	Present Quarry	5,335,000	Issued with Leased Contract
Carsec VI	1	1.8	3,200,000	-do-
Celia V	1	63	23,800,000	-do-
Winfield	2	16		Under Lease Application
Omega	3	24	23,700,000	-do-
Camel	1	8		-do-
Gruen I and II	2	16	Not yet evaluated	-do-
Falcon	1	8	-do-	-do-
TOTAL			56,035,000	
HIGH SILICA CLAY (DACITE)				
Mango	2	Present Quarry	4,340,000	Issued with Leased Contract
Santol	3	24	3,300,000	Under Lease Application
Durian	3	24	Not yet evaluated	-do-
Pina	3	24	-do-	-do-
Atis	2	16	-do-	-do-
Chico	2	16	-do-	-do-
Joaquin	3	24	-do-	-do-
Constance	3	24	-do-	-do-
TOTAL			7,640,000	
LOW SILICA CLAY (DIORITE)				
Bulova I	1	Present Quarry	1,100,000	Issued with Leased Contract
Bulova II and III	2	16	Not yet evaluated	-do-
Island II	1	64	-do-	-do-
TOTAL			1,100,000	

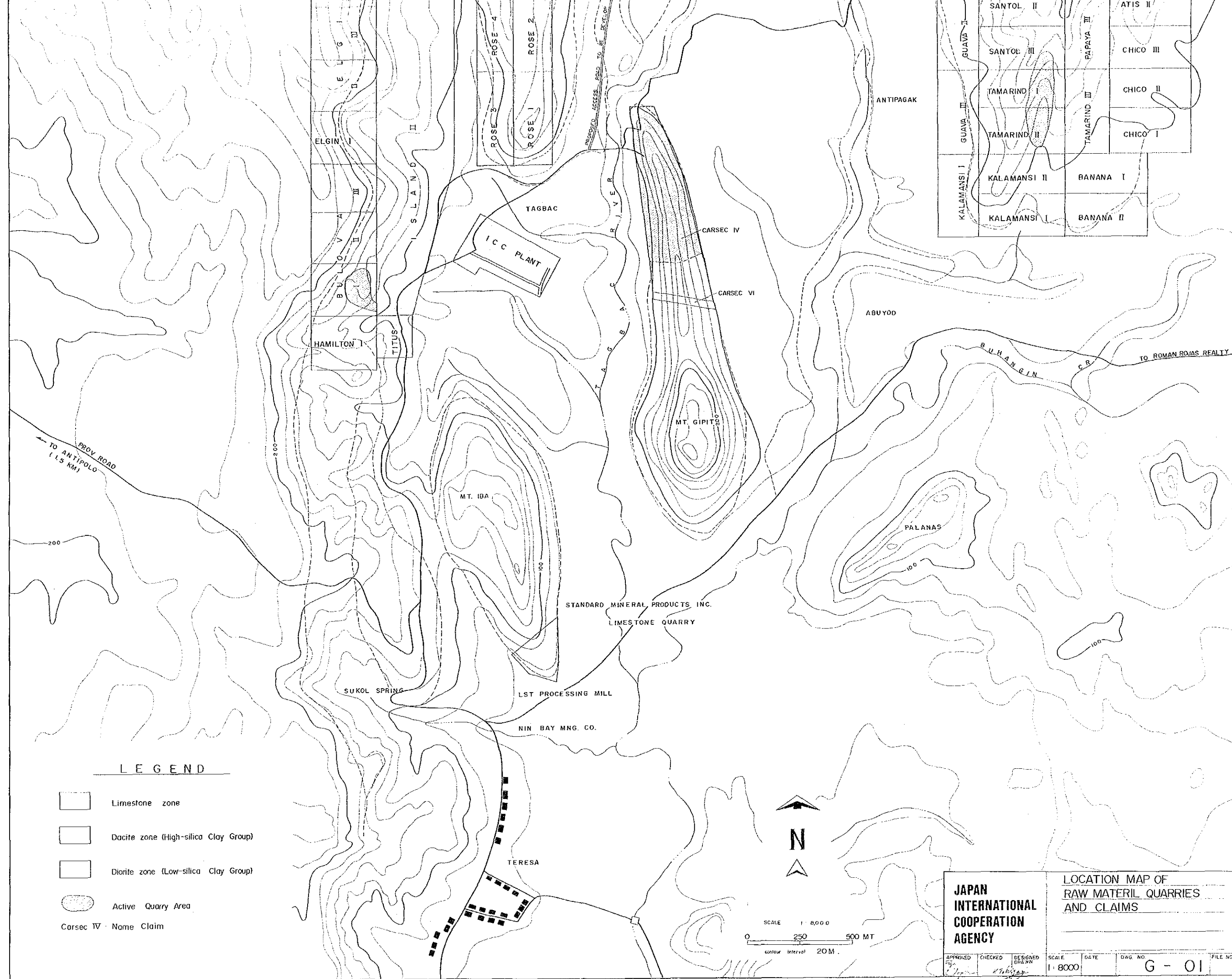
(Note) All the quantities of proven reserves according to ICC's inventory at the beginning of January, 1986.

NEW BOSOBOSO Abandoned	MANGO I	DURIAN I	PAPAYA I II	PIÑA III
	MANGO II	DURIAN II		PIÑA II
	MANGO III	DURIAN III		PIÑA I



(Note) All the quantities of proven reserves according to ICC's inventory of the beginning of January, 1986.

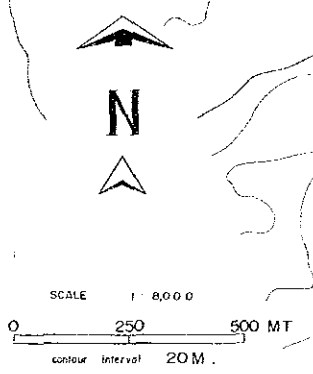




GUAVA I	SANTOL II	ATIS II
GUAVA II	SANTOL III	CHICO III
GUAVA III	TAMARIND I	CHICO II
	TAMARIND II	CHICO I
KALAMANSI I	KALAMANSI II	BANANA I
	KALAMANSI I	BANANA II

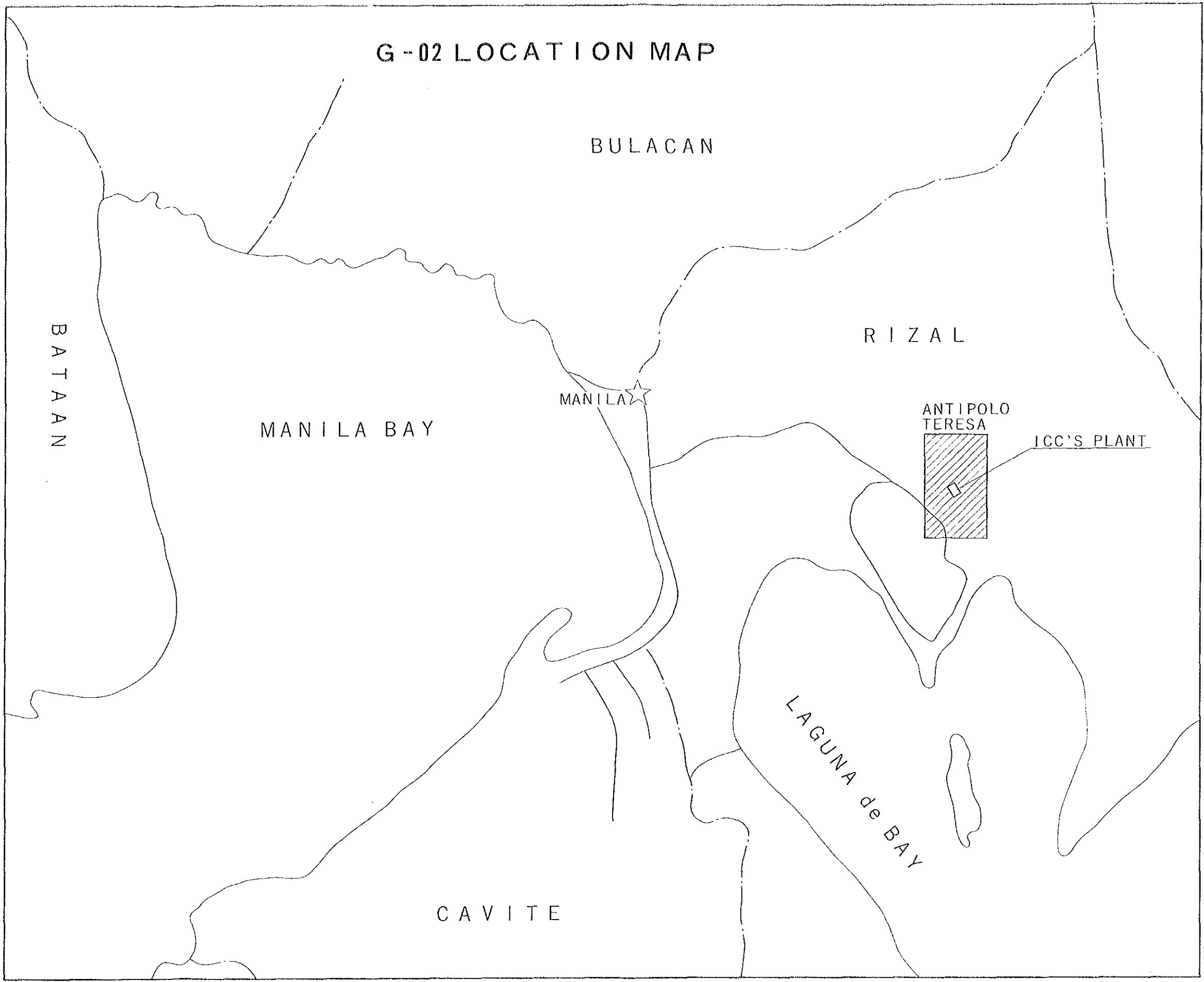
LEGEND

- Limestone zone
- Dacite zone (High-silica Clay Group)
- Diorite zone (Low-silica Clay Group)
- Active Quarry Area
- Carsec IV Name Claim



JAPAN INTERNATIONAL COOPERATION AGENCY		LOCATION MAP OF RAW MATERIAL QUARRIES AND CLAIMS				
		APPROVED <i>[Signature]</i>	CHECKED <i>[Signature]</i>	DESIGNED DRAWN <i>[Signature]</i>	SCALE 1:8000	DATE

G-02 LOCATION MAP



JICA