

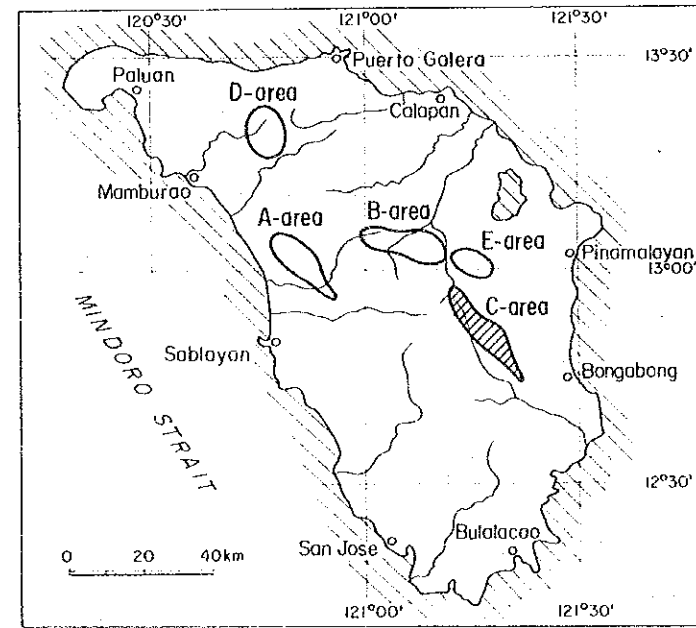
PL. 1-3

GEOLOGICAL SURVEY  
OF  
MINDORO ISLAND, PHILIPPINES  
PHASE III

Geological Map of C-area

LOCATION INDEX

国際協力事業団  
11868  
図書資料室蔵書

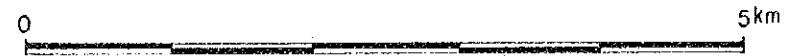


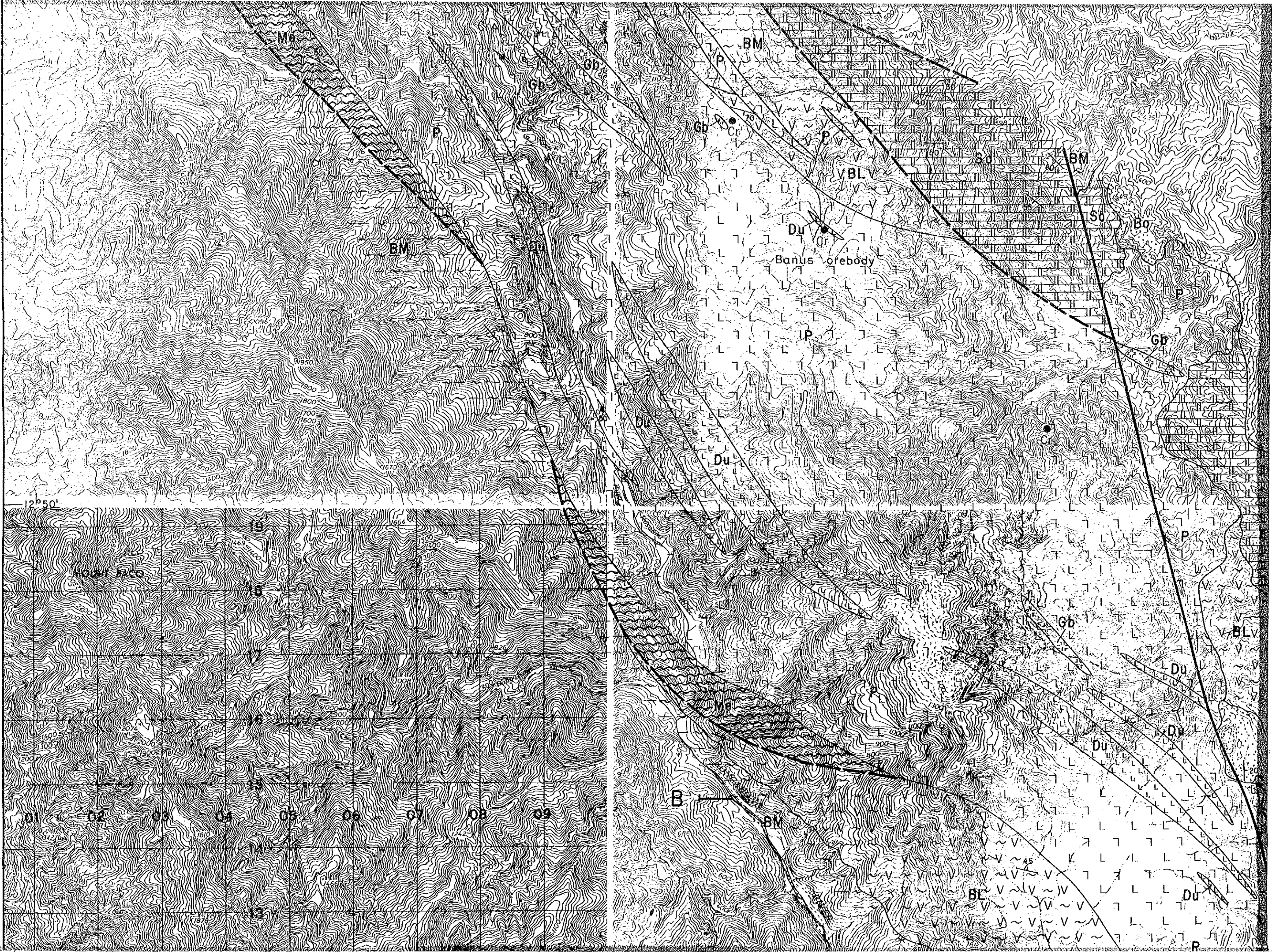
JAPAN INTERNATIONAL COOPERATION AGENCY  
METAL MINING AGENCY OF JAPAN

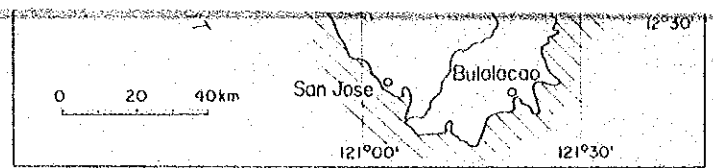
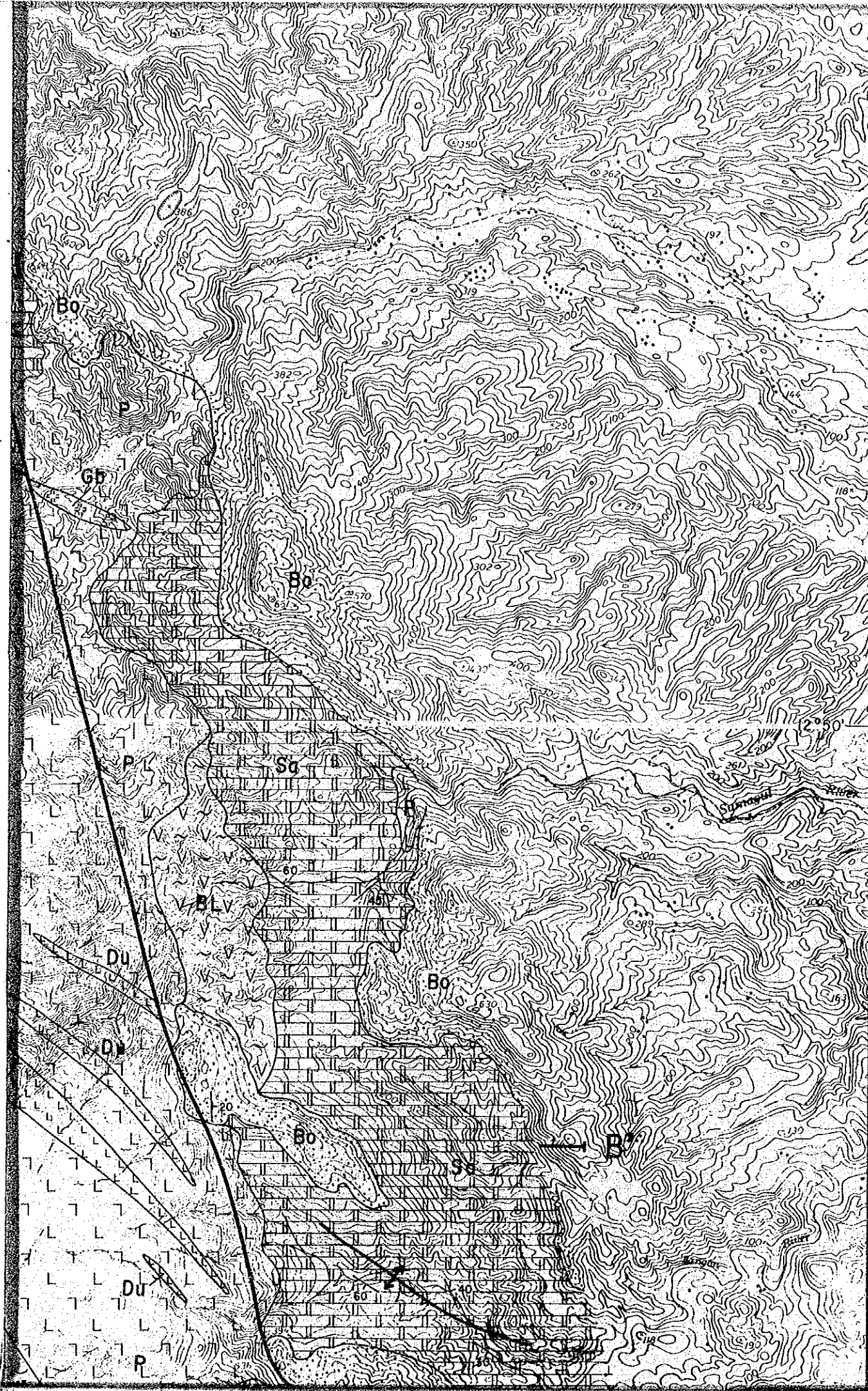
June 1984

Prepared by Bishimetal Exploration Co., Ltd.

Scale 1 : 50,000





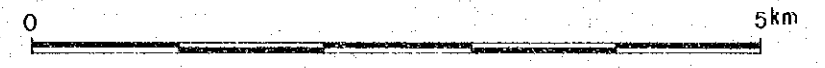


JAPAN INTERNATIONAL COOPERATION AGENCY  
METAL MINING AGENCY OF JAPAN

June 1984

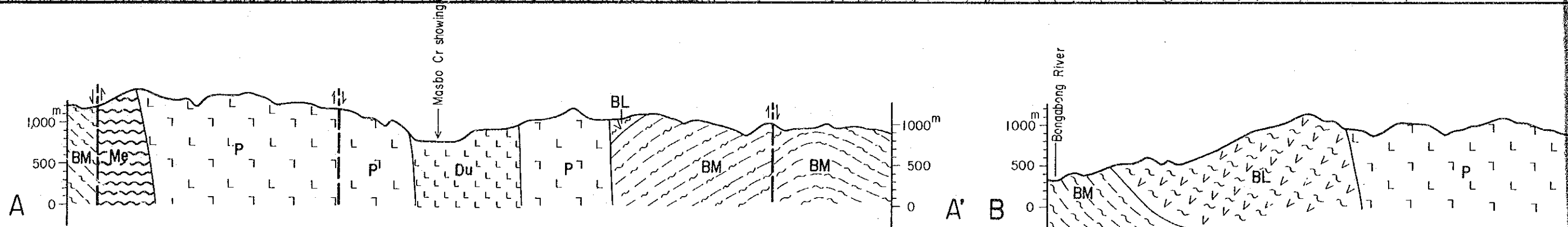
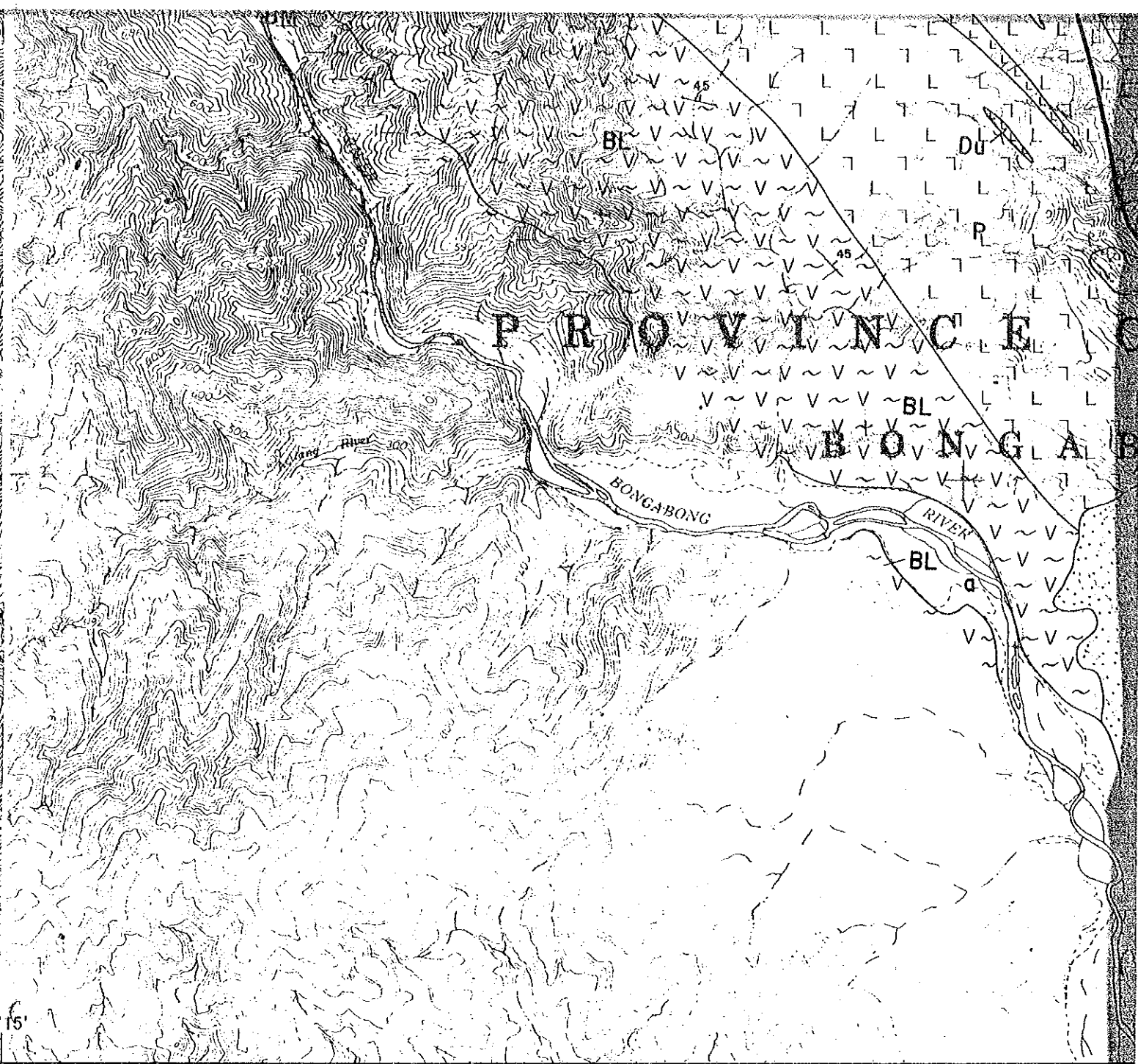
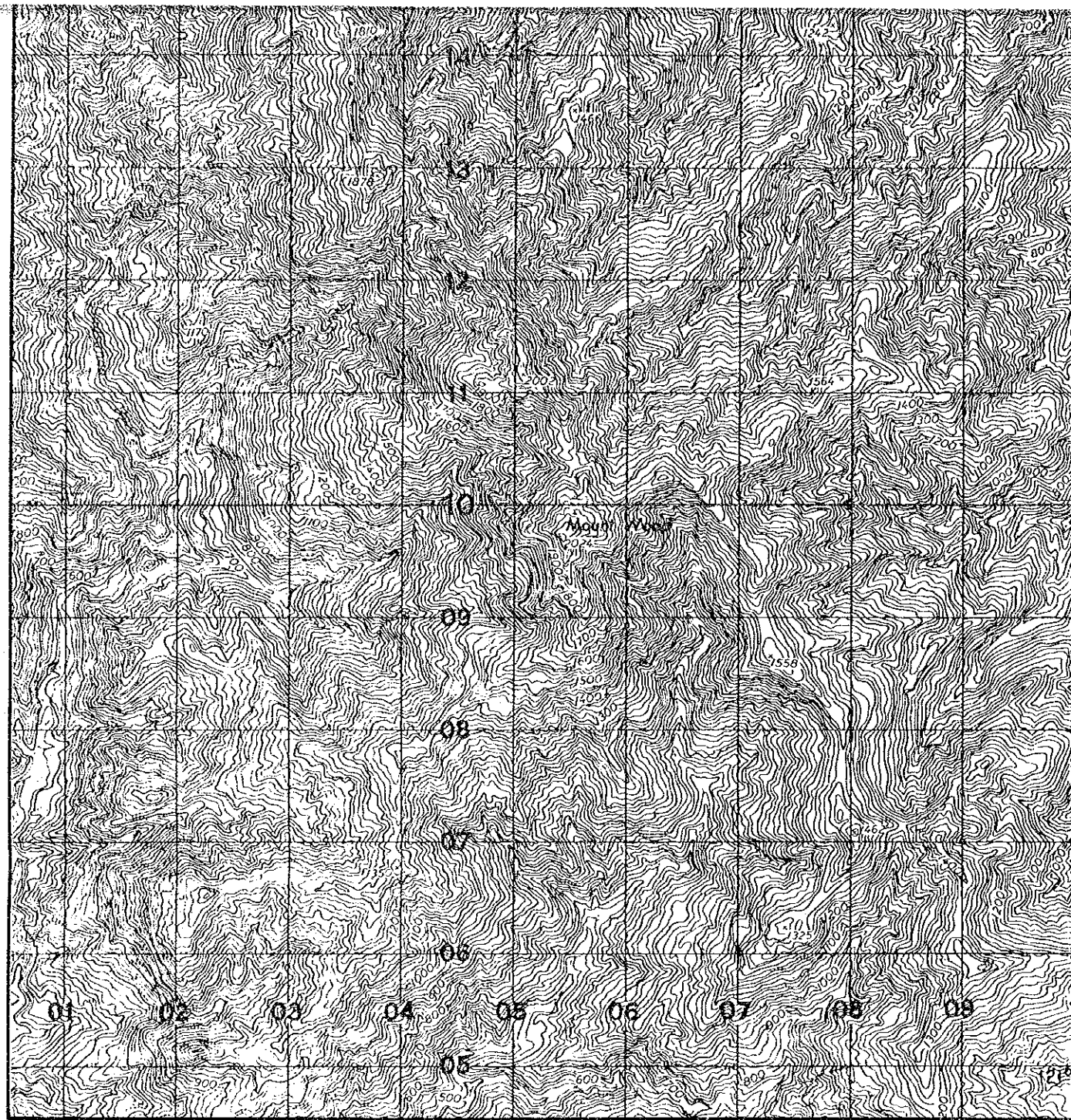
Prepared by Bishimetal Exploration Co.,Ltd.

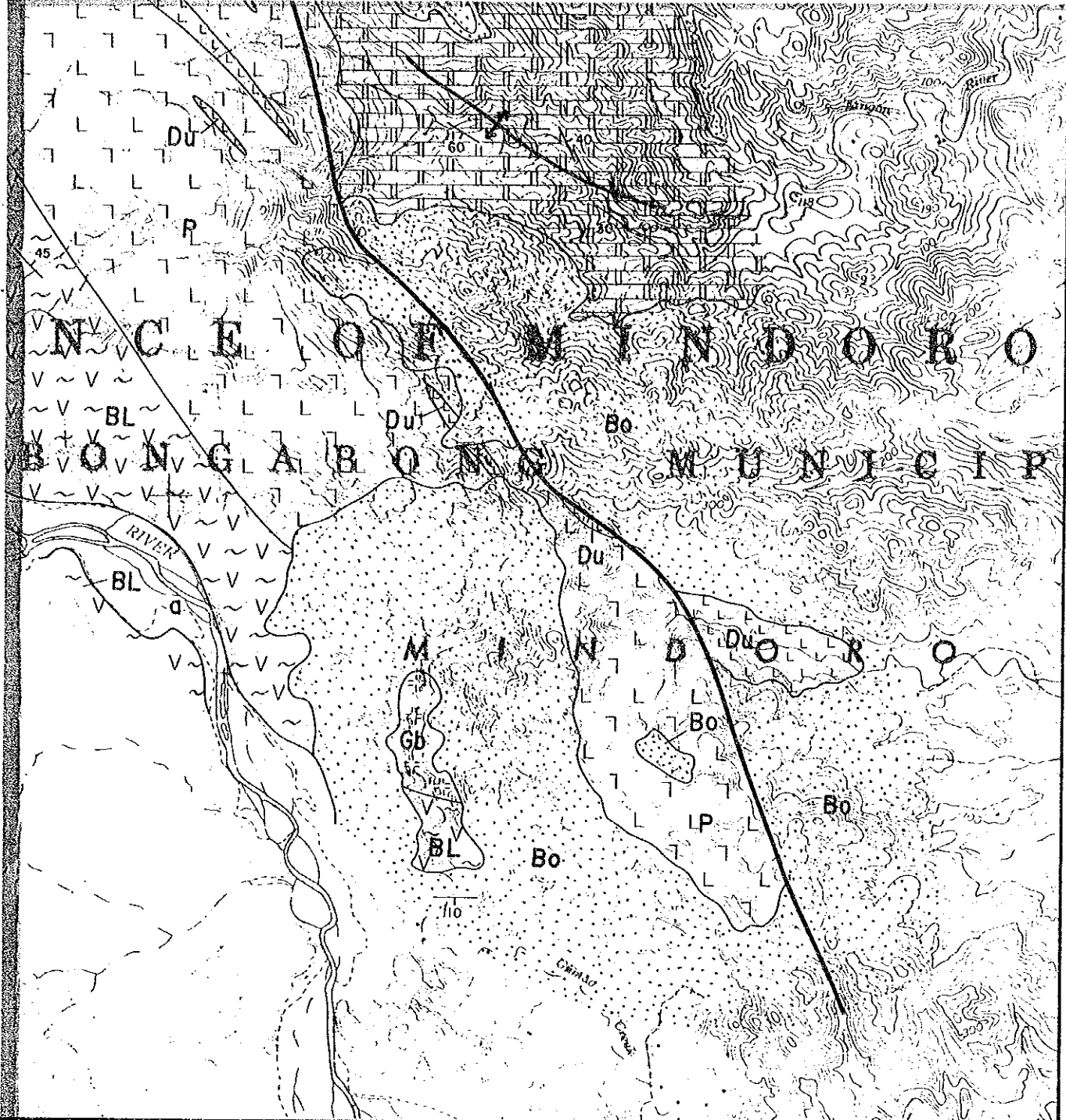
Scale 1 : 50,000






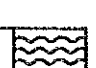
LEGEND






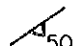

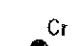
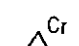

Alluvial deposits		silt, sand and gravel
Bongabong Group		conglomerate, calcareous sandstone, calcareous siltstone to mudstone with andesitic tuff
Sablayan Group		limestone, calcareous sandstone, calcareous mudstone with andesite and andesitic tuff
Baco Group	Lumintao Formation	basalt with basaltic tuff, sandstone, shale, slate to phyllite, green slate
	Mansalay Formation	shale, sandstone, slate to phyllite, phyllitic sandstone with basalt and basaltic tuff
Halcon metamorphics		mica schist with green schist
<b>Intrusive Rocks</b>		
Ultramafic complex		peridotite
		dunite
		gabbro

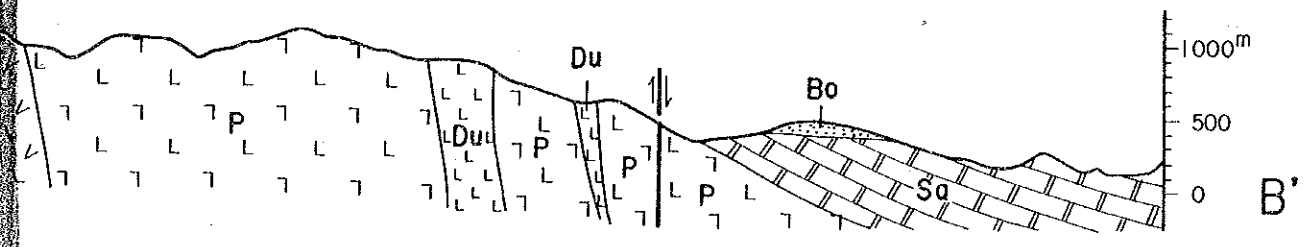




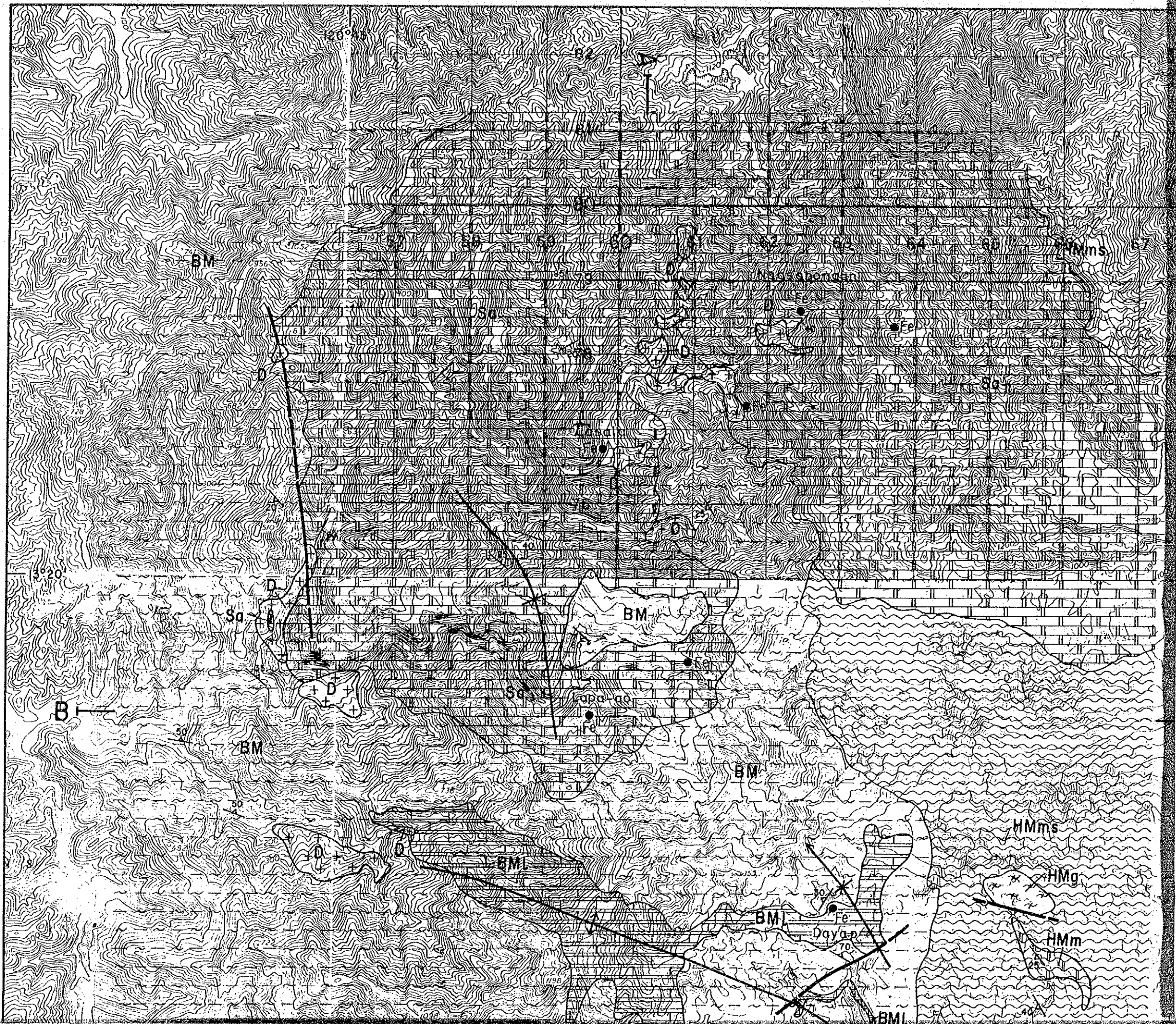
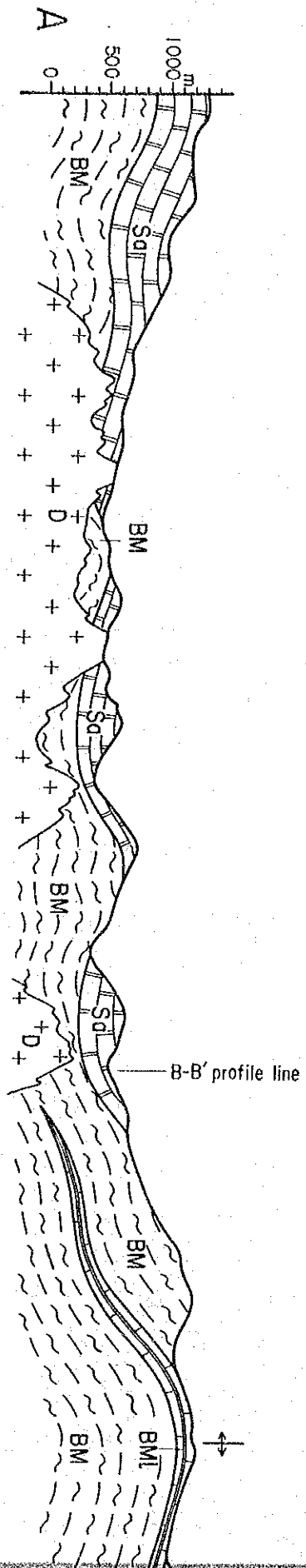
**Intrusive Rocks**

- Ultramafic complex
- P  peridotite
  - Du  dunite
  - Gb  gabbro
  - Me  amphibolite and green schist

-  Anticline
-  Syncline
-  Fault (certain)
-  Fault (inferred)
-  30 Strike and dip
-  50 Schistosity
-  Layering
-  Chrome showing
-   $\Delta^{Cr}$  Float of chromite ore
-  A-A' Profile line



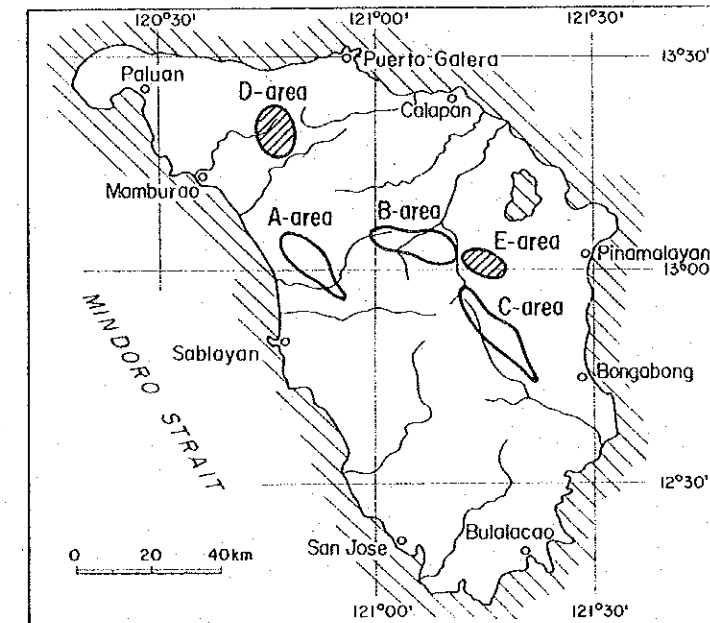
D - area



GEOLOGICAL SURVEY  
OF  
MINDORO ISLAND, PHILIPPINES  
PHASE III

Geological Map of D-area and E-area

LOCATION INDEX

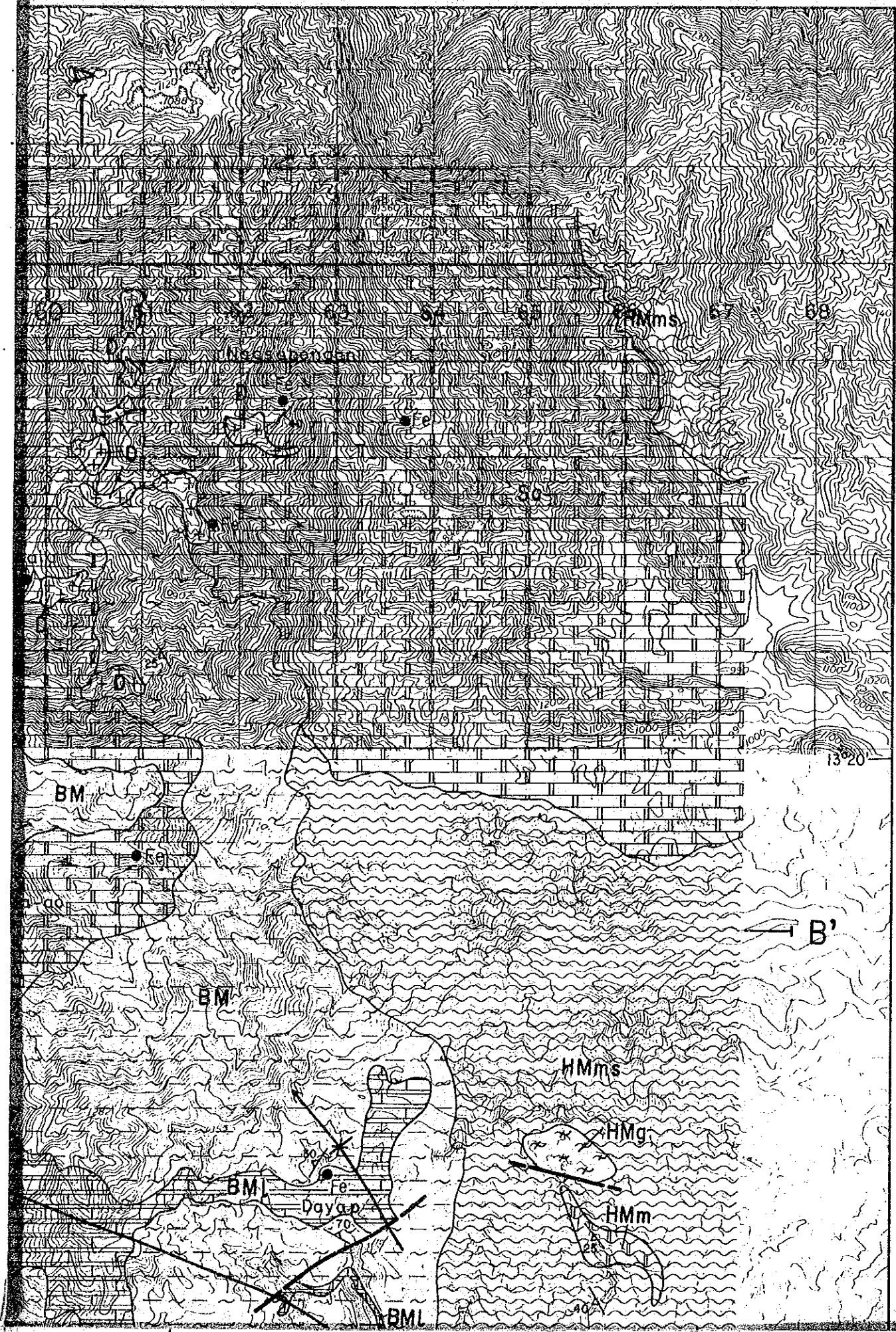


JAPAN INTERNATIONAL COOPERATION AGENCY  
METAL MINING AGENCY OF JAPAN

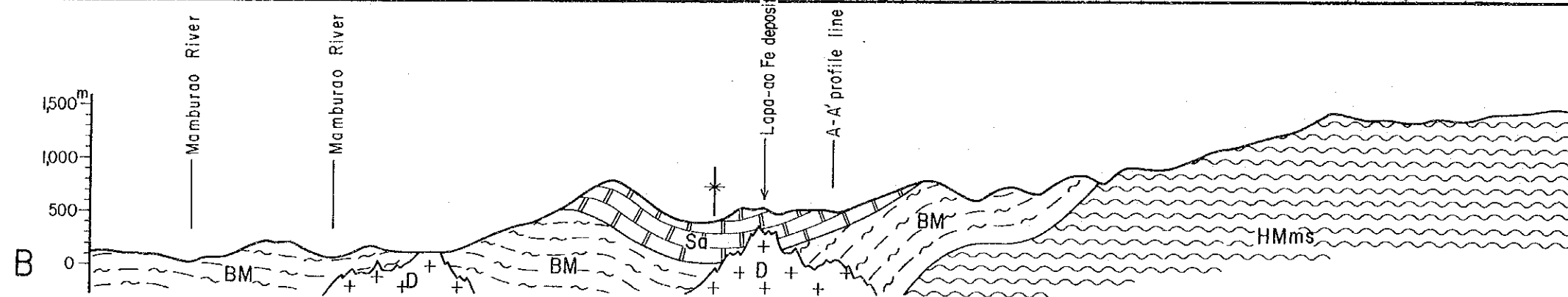
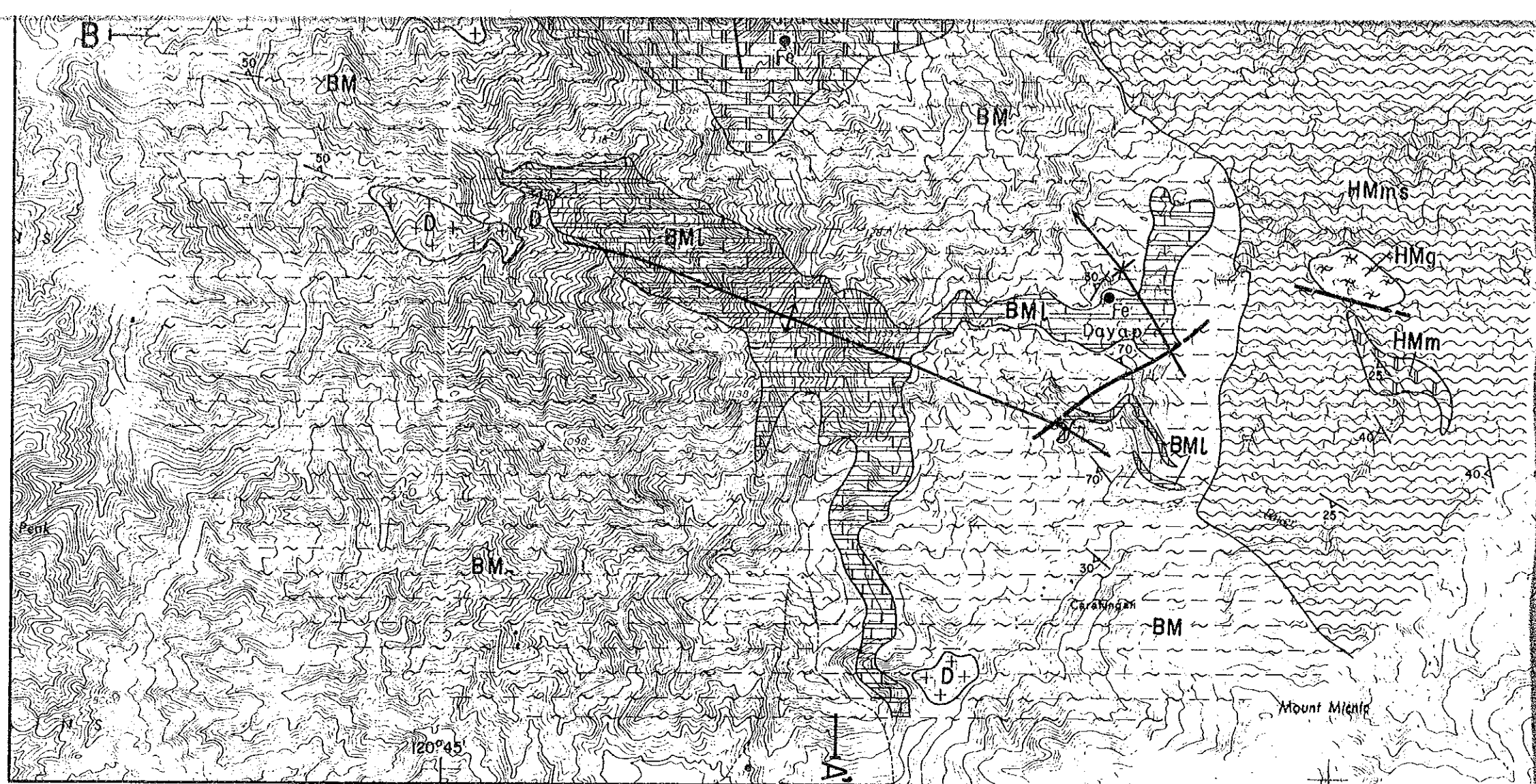
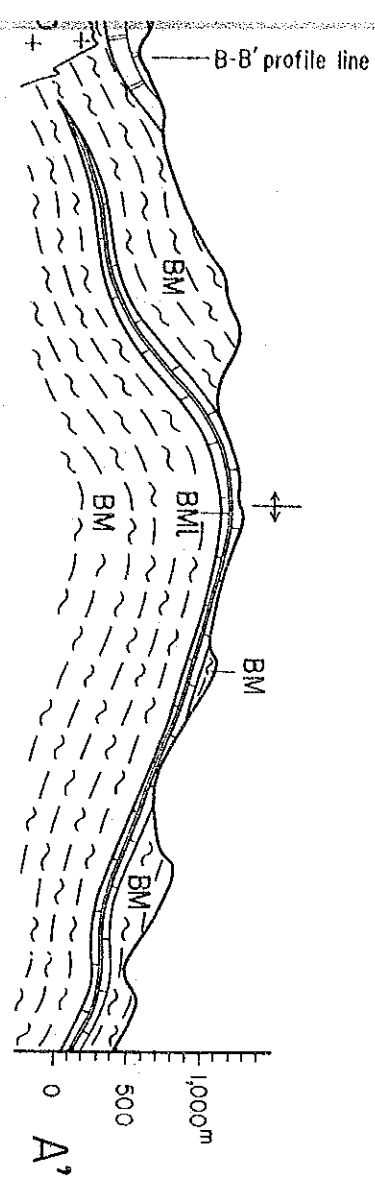
June 1984

Prepared by Bishimetal Exploration Co., Ltd.

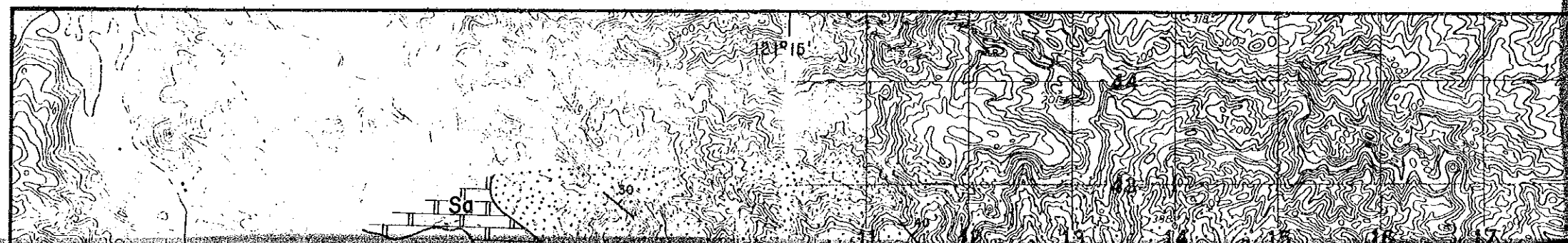
Scale 1 : 50,000

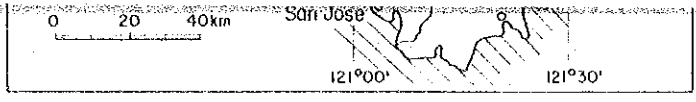
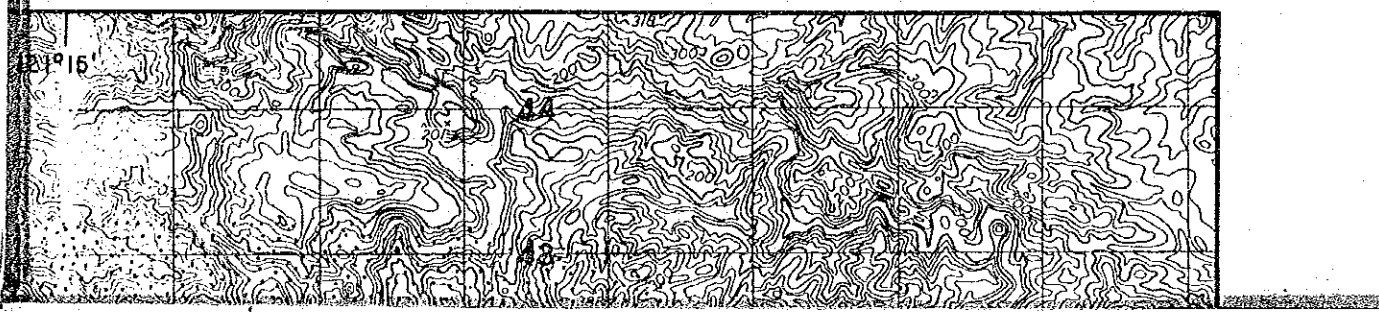
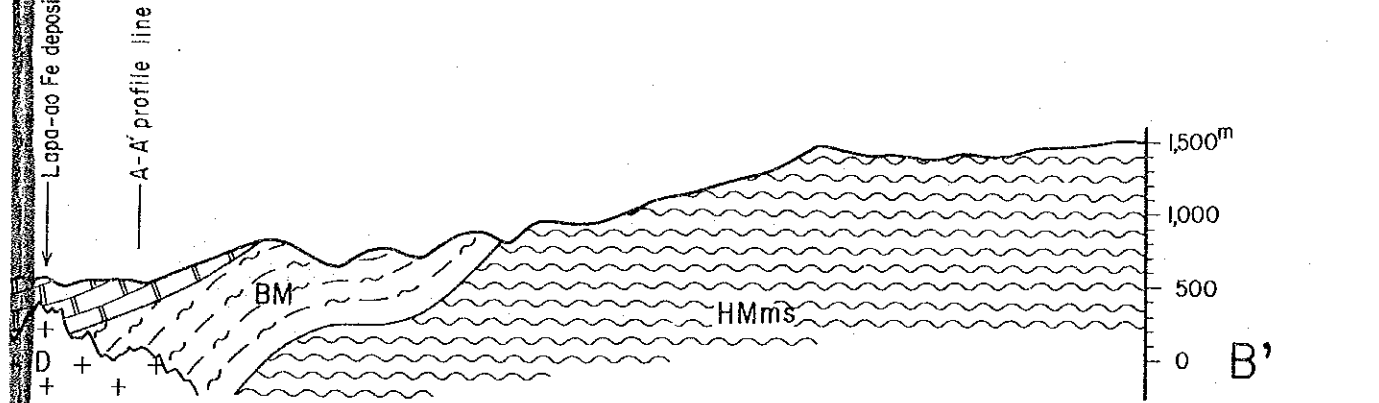
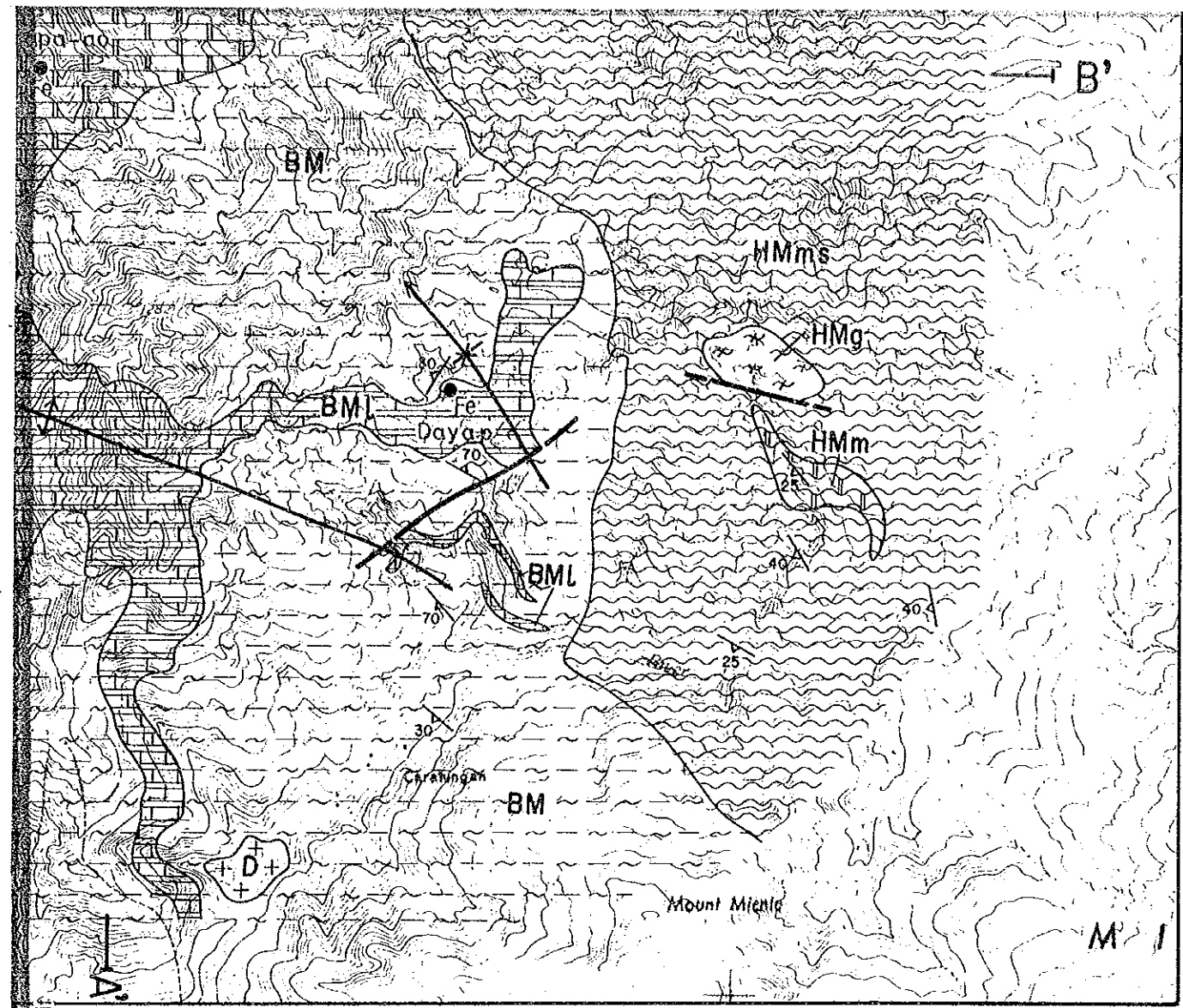






E-area





JAPAN INTERNATIONAL COOPERATION AGENCY  
METAL MINING AGENCY OF JAPAN

June 1984

Prepared by Bishimetal Exploration Co.,Ltd.

Scale 1 : 50,000



LEGEND

Alluvial deposits	a	silt, sand and gravel	
Bongabong Group	Bo	conglomerate, calcareous sandstone, calcareous siltstone to mudstone with andesitic tuff	
Sablayan Group	Sa	limestone, calcareous sandstone, calcareous mudstone with andesite and andesitic tuff	
Baco Group	Lumintao Formation	BL	basalt with basaltic tuff, sandstone, shale, slate to phyllite, green slate
	Mansalay Formation	BMI	limestone
BM		shale, sandstone, slate to phyllite, phyllitic sandstone with basalt and basaltic tuff	
Halcon metamorphics	HMms	mica schist with green schist	
	HMm	marble	
	HMg	gneiss	
<b>Intrusive Rocks</b>			
Ultramafic complex	P	peridotite	
	Gb	gabbro	
	Me	amphibolite and green schist	
Quartz diorite to diorite	D		