

Cu

Cu (ppm)

Lithological Code	Sample No.	Mean Value	Threshold Value	Anomaly		
				Possibly	Probably	Highly
004	194	39	170	104 ~ 169	170 ~ 276	277 ~
CAF	1181	21	57	41 ~ 56	57 ~ 78	79 ~
BLF-1	92	17	44	32 ~ 43	44 ~ 59	60 ~
BLF-2	367	26	49	39 ~ 48	49 ~ 59	60 ~
MIF	62	36	105	73 ~ 104	105 ~ 148	149 ~
TF	103	34	96	68 ~ 95	96 ~ 135	136 ~
MB-1	81	97	555	325 ~ 594	595 ~ 1089	1090 ~
MB-2	119	70	207	144 ~ 206	207 ~ 295	296 ~
MG-1	316	62	207	152 ~ 206	207 ~ 311	312 ~
MG-2	129	70	99	68 ~ 98	99 ~ 110	111 ~
LD	21	75	121	103 ~ 120	121 ~ 141	142 ~
BA	36	69	111	94 ~ 110	111 ~ 150	151 ~

Cu

Statistical Classification Table						
Sample No.	Mean Value	Threshold Value	Anomaly			
			Posibly	Probably	Highly	
194	39	170	104 ~ 169	170 ~ 216	217 ~	
1101	21	57	41 ~ 56	57 ~ 76	77 ~	
92	17	44	32 ~ 43	44 ~ 59	60 ~	
367	28	49	36 ~ 48	49 ~ 59	60 ~	
62	36	105	73 ~ 104	105 ~ 148	149 ~	
103	34	96	69 ~ 95	96 ~ 135	136 ~	
81	97	595	325 ~ 594	595 ~ 1089	1090 ~	
119	70	207	144 ~ 206	207 ~ 295	296 ~	
316	82	207	152 ~ 206	207 ~ 311	312 ~	
126	70	98	88 ~ 98	99 ~ 110	111 ~	
21	75	121	103 ~ 120	121 ~ 141	142 ~	
36	69	111	94 ~ 110	111 ~ 130	131 ~	



Pb

Statistical Classification Table						
Lithological Code	Sample No.	Mean Value	Threshold Value	Anomaly		
				Posibly	Probably	Highly
Gal	194	3	15	9 ~ 14	15 ~ 26	27 ~
CAF	1181	27	10.5	6.7 ~ 10.4	10.5 ~ 16.9	16.5 ~
BLF-1	92	26	8.4	5.7 ~ 8.3	8.4 ~ 12.3	12.4 ~
BLF-2	367	4	13	9 ~ 12	13 ~ 18	19 ~
MIF	62	2	5	4 ~ 4.9	5 ~ 6.9	7 ~
TF	103	2.6	10.2	6.5 ~ 10.1	10.2 ~ 16.0	16.1 ~
MB-1	81	4	14	9 ~ 13	13 ~ 21	22 ~
MB-2	119	4	12	8 ~ 11	12 ~ 16	17 ~
MG-1	316	3	14	9 ~ 13	14 ~ 24	25 ~
MG-2	126	2	6	4 ~ 5	6 ~ 7	8 ~
LD	21	2	5	3 ~ 4	5 ~ 7	8 ~
BA	36	4	9	7 ~ 8	9 ~ 12	13 ~

Pb

Lithological Code	Sample No.	Mean Value	Threshold Value	Anomaly		
				Possibly	Probably	Highly
				~	~	~
Qol	194	3	15	9 ~ 14	15 ~ 26	27 ~
CAF	1181	27	10.5	6.7 ~ 10.4	10.5 ~ 16.4	16.5 ~
BLF-1	92	26	6.4	5.7 ~ 6.3	6.4 ~ 12.3	12.4 ~
BLF-2	367	4	13	9 ~ 12	13 ~ 18	19 ~
MIF	62	2	5	4 ~ 4.9	5 ~ 9.7	~
TF	103	2.6	10.2	6.5 ~ 10.1	10.2 ~ 16.0	16.1 ~
MB-1	81	4	14	9 ~ 13	13 ~ 21	22 ~
MB-2	119	4	12	8 ~ 11	12 ~ 16	17 ~
MG-1	316	3	14	8 ~ 13	14 ~ 24	25 ~
MG-2	126	2	6	4 ~ 5	6 ~ 7	8 ~
LD	21	2	5	3 ~ 4	5 ~ 7	8 ~
BA	36	4	9	7 ~ 8	9 ~ 12	13 ~

Zn

Lithological Code	Sample No.	Mean Value	Threshold Value	Anomaly		
				Possibly	Probably	Highly
				~	~	~
Qol	194	55	151	108 ~ 150	151 ~ 211	212 ~
CAF	1181	46	132	93 ~ 131	132 ~ 187	188 ~
BLF-1	92	33	65	22 ~ 64	65 ~ 81	82 ~
BLF-2	367	45	84	68 ~ 83	84 ~ 102	103 ~
MIF	62	44	94	74 ~ 93	94 ~ 120	121 ~
TF	103	45	94	74 ~ 93	94 ~ 119	120 ~
MB-1	81	77	148	119 ~ 147	148 ~ 183	184 ~
MB-2	119	70	108	94 ~ 107	108 ~ 124	125 ~
MG-1	316	76	137	113 ~ 136	137 ~ 167	168 ~
MG-2	126	75	122	103 ~ 121	122 ~ 142	143 ~
LD	21	62	105	88 ~ 104	105 ~ 125	126 ~
BA	36	61	148	121 ~ 147	148 ~ 180	181 ~

Zn

Lithological Code	Statistical Classification Table					
	Sample No.	Mean Value	Threshold Value	Anomaly		
				Possibly	Probably	Highly
L	104	55	151	108 ~ 150	151 ~ 211	212 ~
L'	1181	46	132	93 ~ 131	132 ~ 187	188 ~
-1	92	33	65	52 ~ 64	65 ~ 81	82 ~
-2	367	45	84	68 ~ 83	84 ~ 102	103 ~
F	62	44	94	74 ~ 93	94 ~ 120	121 ~
F'	103	45	94	74 ~ 93	94 ~ 119	120 ~
-1	81	77	148	119 ~ 147	148 ~ 183	184 ~
-2	119	70	108	94 ~ 107	108 ~ 124	125 ~
-1	316	76	137	113 ~ 136	137 ~ 167	168 ~
-2	126	75	122	103 ~ 121	122 ~ 142	143 ~
D	21	62	105	88 ~ 104	105 ~ 125	126 ~
A	35	81	148	121 ~ 147	148 ~ 180	181 ~

Ag

Lithological Code	Statistical Classification Table					
	Sample No.	Mean Value	Threshold Value	Anomaly		
				Possibly	Probably	Highly
Gal	194	0.1	1.5	1.3 ~ 1.4	1.5 ~ 1.55	1.60 ~
CAF	1181	0.1	1.4	1.2 ~ 1.39	1.4 ~ 1.49	1.5 ~
BLF-1	92	0.1	0.14	0.130 ~ 0.139	0.140 ~ 0.159	0.160 ~
BLF-2	367	0.1	1.6	1.40 ~ 1.50	1.60 ~ 1.69	1.90 ~
MIF	62	0.1	0.12	0.11		0.12 ~
TF	103	0.1	2.0	1.6 ~ 1.9	2.0 ~ 2.3	2.4 ~
MB-1	81	0.1	0.15	0.140 ~ 0.149	0.150 ~ 0.179	0.180 ~
MB-2	119	0.1	0.14	0.140 ~ 0.149	0.150 ~ 0.169	0.170 ~
MG-1	316	0.1	0.16	0.150 ~ 0.169	0.170 ~ 0.179	0.180 ~
MG-2	126	0.1	0.11			0.11
LO	21	0.1	0.1			0.1
BA	35	0.1	0.1			0.1



Ag

Threshold Value	Anomaly		
	Possibly	Probably	Highly
1.5	1.3 ~ 1.4	1.5 ~ 1.59	1.60 ~
1.4	1.2 ~ 1.39	1.4 ~ 1.49	1.5 ~
0.14	0.130 ~ 0.139	0.140 ~ 0.159	0.160 ~
1.6	1.40 ~ 1.59	1.60 ~ 1.89	1.90 ~
0.12	0.11		0.12 ~
2.0	1.8 ~ 1.9	2.0 ~ 2.3	2.4 ~
0.18	0.140 ~ 0.149	0.150 ~ 0.179	0.180 ~
0.14	0.140 ~ 0.149	0.150 ~ 0.169	0.170 ~
0.16	0.130 ~ 0.159	0.160 ~ 0.179	0.180 ~
0.11			0.11
0.1			0.1
0.1			0.1



Ni

Lithological Code	Sample No.	Mean Value	Threshold Value	Anomaly		
				Possibly	Probably	Highly
QzI	194	16	60	38 ~ 59	60 ~ 92	93 ~
CAF	1181	11	41	26 ~ 40	41 ~ 62	63 ~
BLF-1	92	9	37	23 ~ 36	37 ~ 58	59 ~
BLF-2	367	19	51	36 ~ 50	51 ~ 74	75 ~
MIF	62	13	44	29 ~ 43	44 ~ 66	67 ~
TF	103	15	50	34 ~ 49	50 ~ 74	75 ~
MB-1	61	28	51	42 ~ 50	51 ~ 60	61 ~
MB-2	118	24	54	41 ~ 53	54 ~ 65	70 ~
MG-1	316	25	65	49 ~ 64	65 ~ 89	90 ~
MG-2	126	39	76	62 ~ 77	78 ~ 90	91 ~
LD	21	15	42	30 ~ 41	42 ~ 58	59 ~
BA	36	20	48	36 ~ 47	48 ~ 63	64 ~

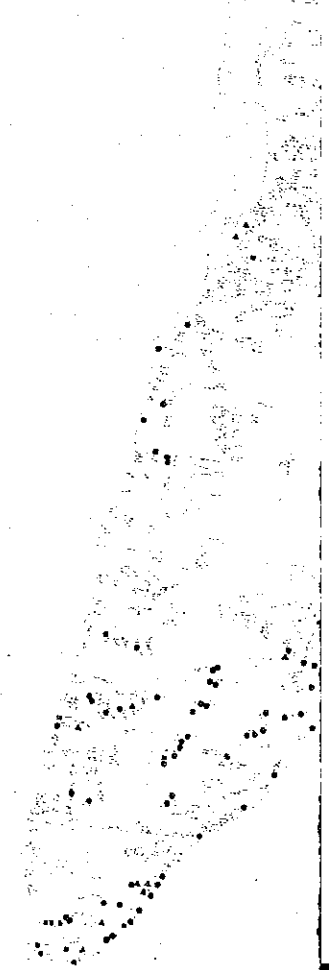


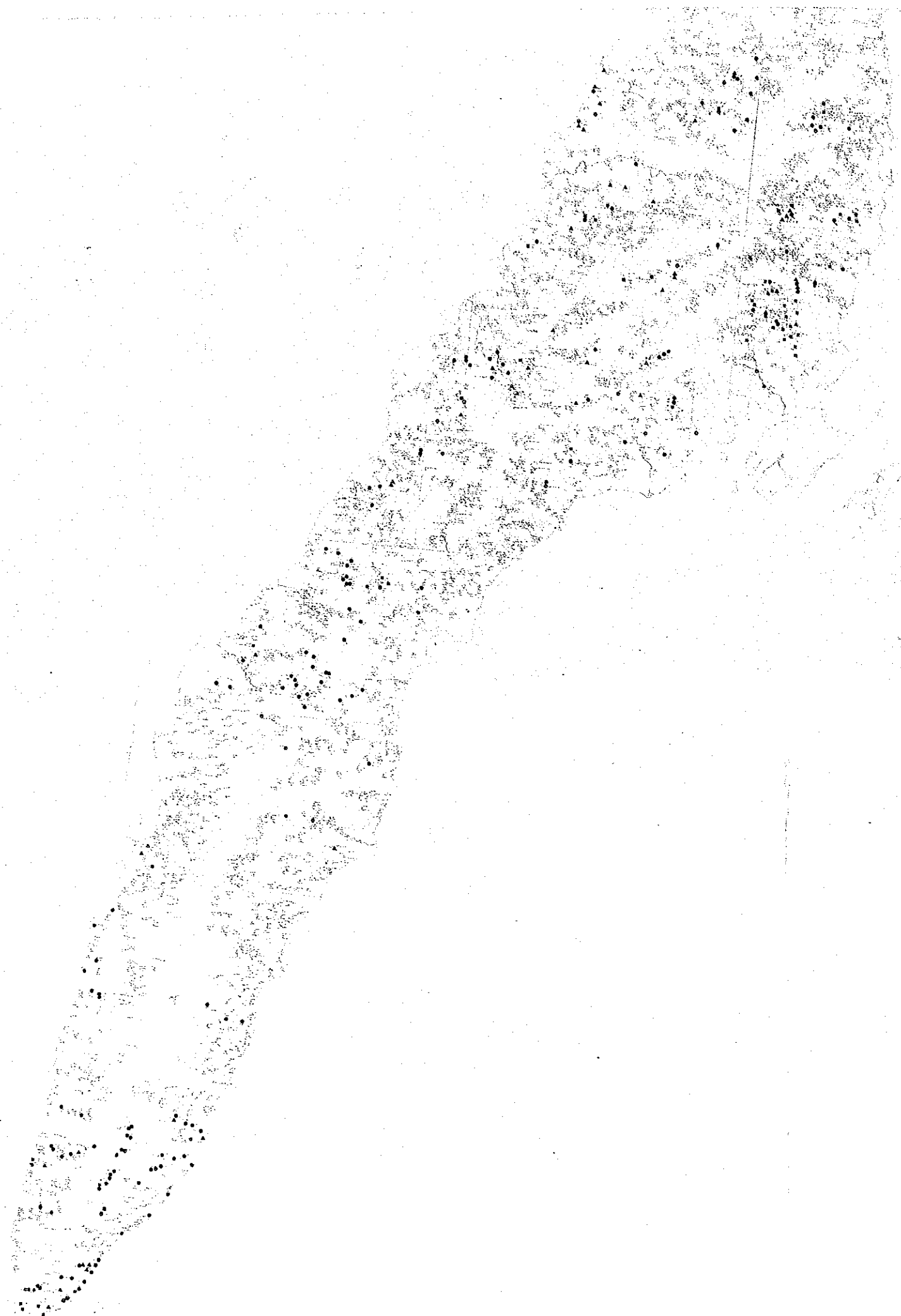
図符図 5世第1
16319
国書資料室蔵

フィリピン共和国
鉱物資源基本図調査
第3年次
セブ地区-其ノI
河床堆積物地化探異常値分布図(単一変量解析)

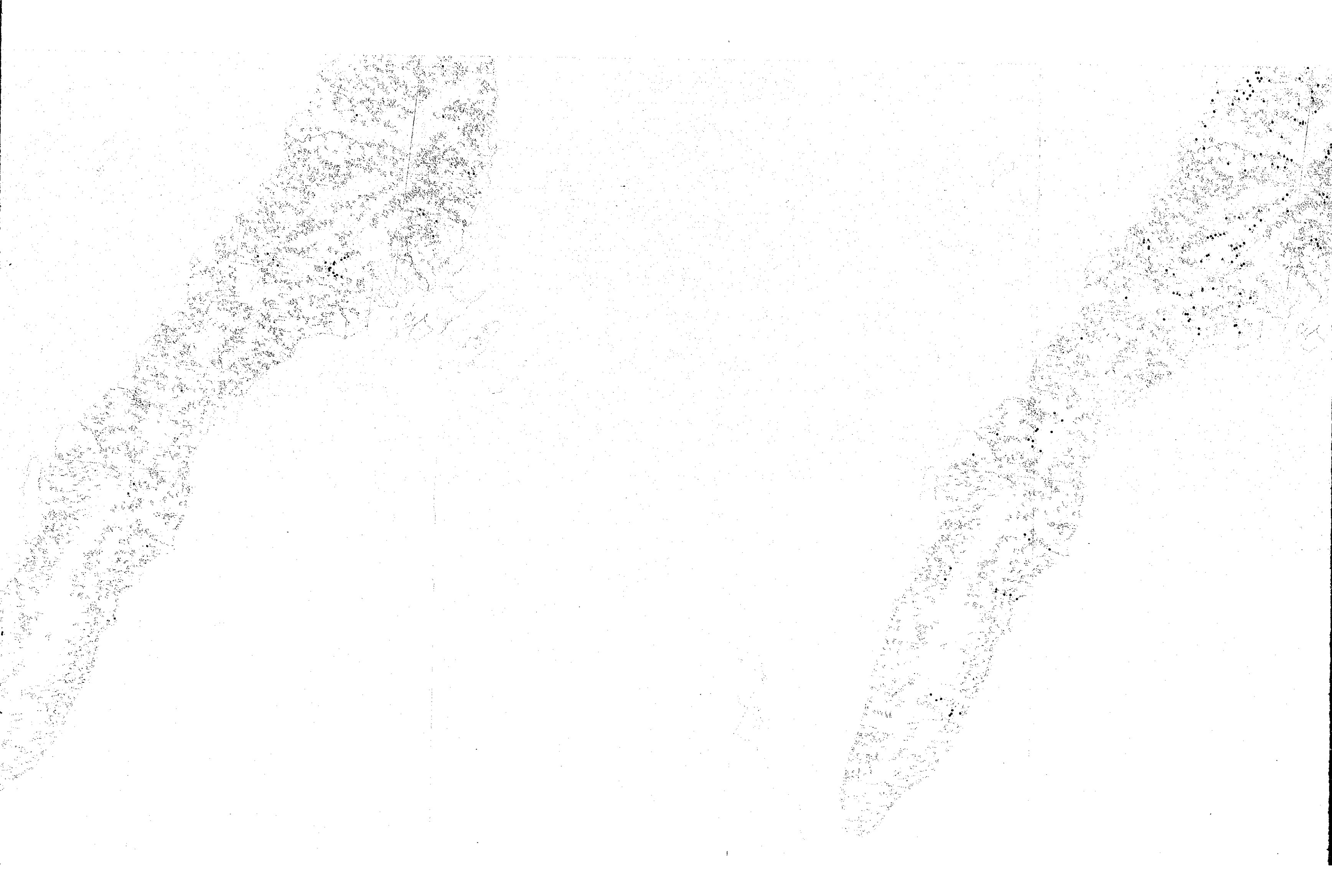
昭和62年2月
国際協力事業団
金属鉱業事業団

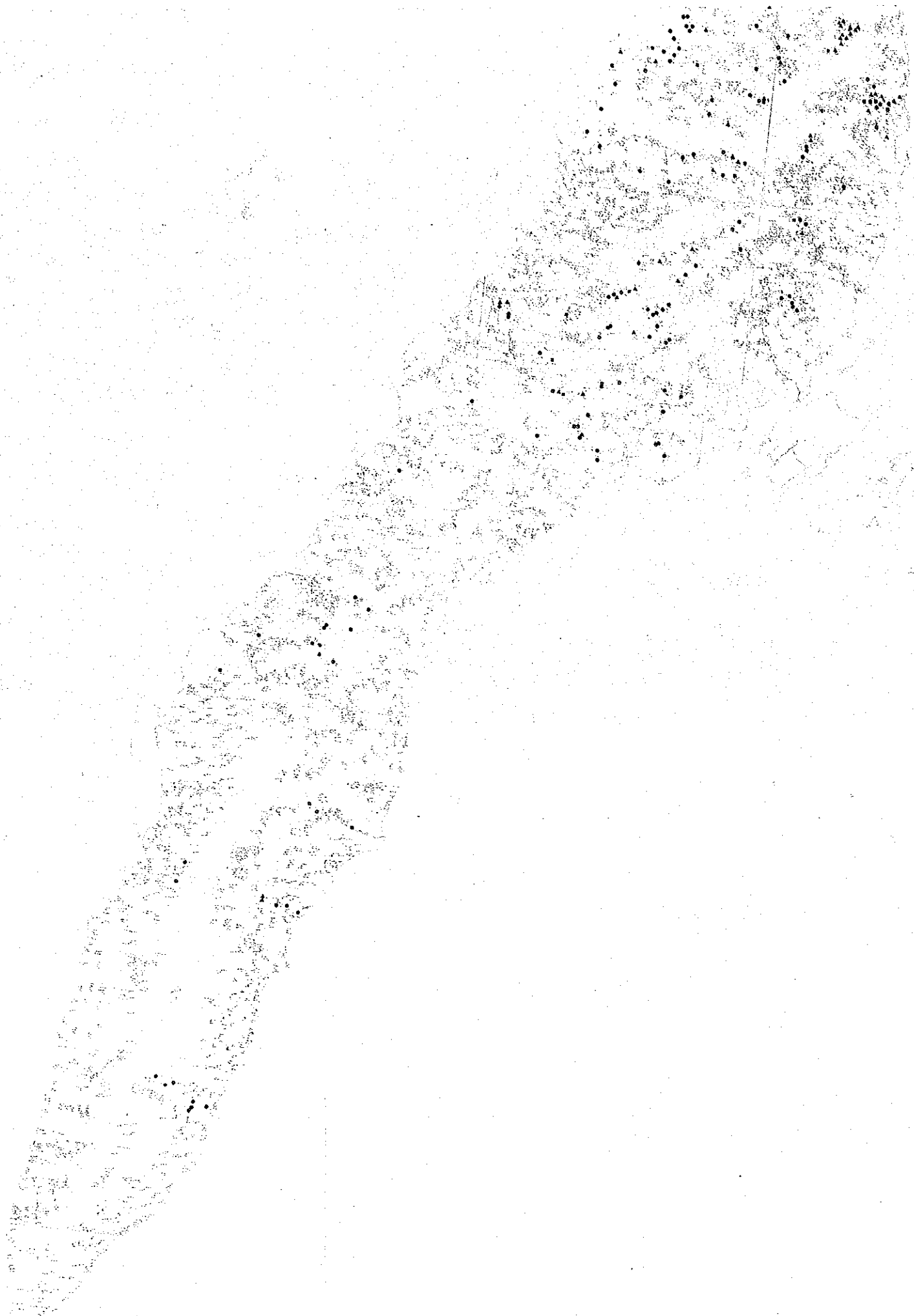
Scale 1 : 250,000











CAP	1101	11	41	26 ~ 40	41 ~ 62	63 ~
BLF-1	92	9	37	23 ~ 35	37 ~ 50	59 ~
BLF-2	367	19	51	36 ~ 50	51 ~ 74	76 ~
MIF	62	13	44	29 ~ 43	44 ~ 66	67 ~
TF	103	15	50	34 ~ 49	50 ~ 74	75 ~
MB-1	91	28	51	42 ~ 50	51 ~ 60	61 ~
MB-2	119	23	54	41 ~ 53	54 ~ 69	70 ~
MG-1	316	25	65	48 ~ 64	65 ~ 89	90 ~
MG-2	125	39	76	62 ~ 77	78 ~ 98	99 ~
LD	21	18	42	30 ~ 41	42 ~ 59	59 ~
BA	36	20	48	36 ~ 47	48 ~ 63	64 ~



Co

Co (ppm)

Liberal Code	Sample No.	Mean Value	Threshold Value	Anomaly		
				Possibly	Probably	Highly
DeL	134	11	41	26 ~ 40	41 ~ 63	64 ~
CRF	1191	6.9	32.5	19.4 ~ 32.4	32.5 ~ 54.3	54.4 ~
BLF-1	92	5	17	11 ~ 16	17 ~ 20	26 ~
BLF-2	367	8	26	18 ~ 25	26 ~ 39	40 ~
MIF	62	11	28	20 ~ 27	28 ~ 37	38 ~
TF	103	10	31	21 ~ 30	31 ~ 45	46 ~
MB-1	81	20	38	31 ~ 37	38 ~ 46	47 ~
MB-2	119	17	29	24 ~ 28	29 ~ 33	34 ~
MG-1	316	19	28	24 ~ 27	28 ~ 31	32 ~
MG-2	126	19	24	22 ~ 23	24 ~ 25	26 ~
LD	21	15	22	20 ~ 21	22 ~ 24	25 ~
BA	36	17	26	23 ~ 25	26 ~ 29	30 ~

Co

Possibly	Anomaly		Highly
	Probably	Probably	
26 ~ 40	41 ~ 63	64 ~	
19.4 ~ 32.4	32.5 ~ 54.3	54.4 ~	
11 ~ 16	17 ~ 25	26 ~	
18 ~ 25	26 ~ 39	40 ~	
20 ~ 27	28 ~ 37	38 ~	
21 ~ 30	31 ~ 45	46 ~	
31 ~ 37	38 ~ 46	47 ~	
24 ~ 28	29 ~ 33	34 ~	
24 ~ 27	28 ~ 31	32 ~	
22 ~ 23	24 ~ 25	26 ~	
20 ~ 21	22 ~ 24	25 ~	
23 ~ 25	26 ~ 29	30 ~	

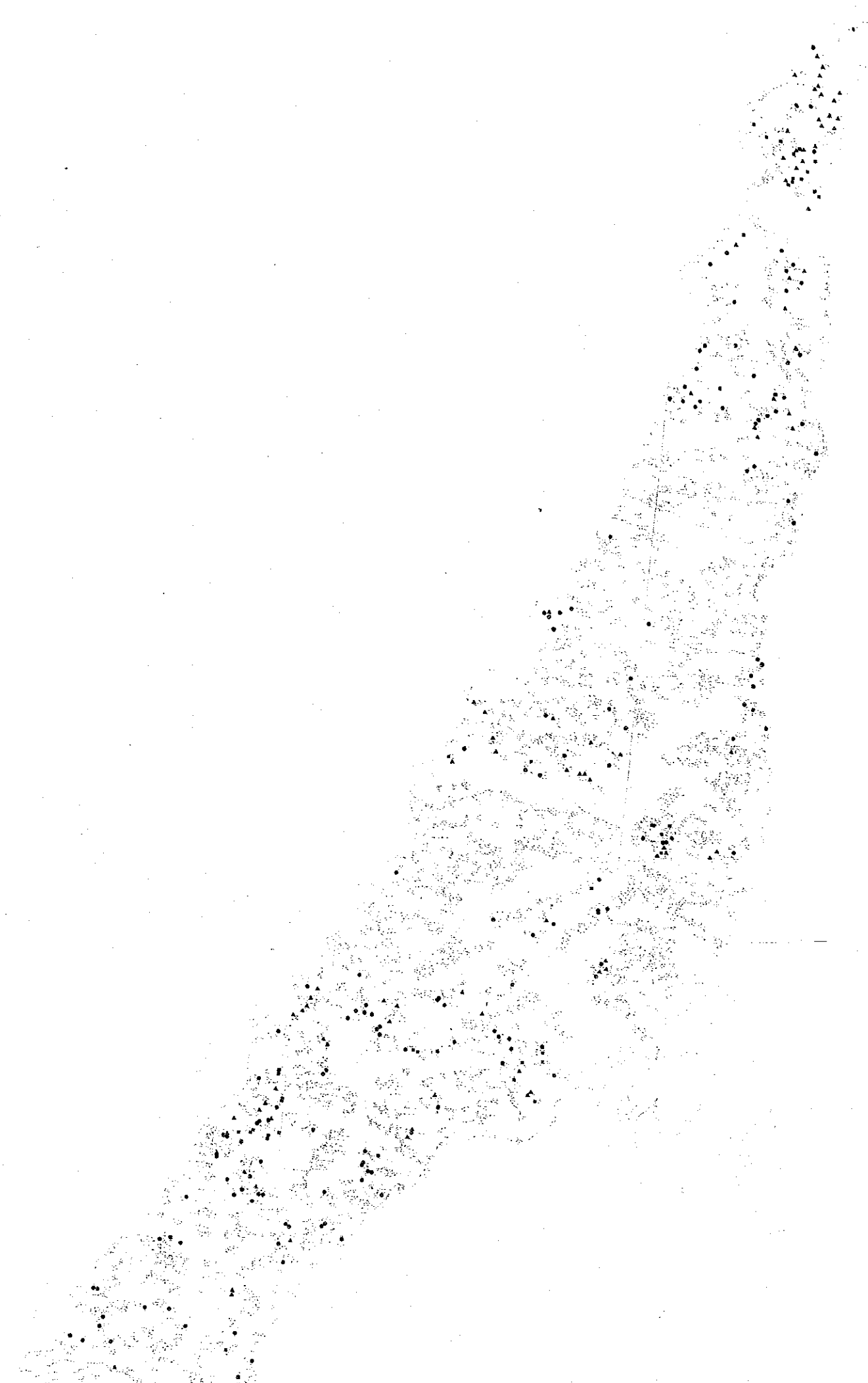


Mn

Lithological Code	Sample No.	Mean Value	Threshold Value	Anomaly		
				Possibly	Probably	Highly
Qc1	194	598	1861	330 ~ 1960	1961 ~ 2913	2914 ~
CAF	1181	477	1607	1159 ~ 1606	1607 ~ 2019	2019 ~
BLF-1	92	538	985	690 ~ 984	985 ~ 1407	1408 ~
BLF-2	367	555	1869	1247 ~ 1868	1869 ~ 2600	2601 ~
MIF	62	539	1341	990 ~ 1340	1341 ~ 1815	1816 ~
TF	103	618	1082	1155 ~ 1581	1582 ~ 2152	2153 ~
MB-1	81	669	1327	1056 ~ 1326	1327 ~ 1667	1668 ~
MB-2	19	719	1319	1077 ~ 1318	1319 ~ 1613	1614 ~
MS-1	316	826	1302	1120 ~ 1301	1302 ~ 1512	1513 ~
MG-2	126	869	1209	1091 ~ 1208	1209 ~ 1359	1359 ~
LD	21	720	1123	968 ~ 1122	1123 ~ 1302	1303 ~
BA	36	769	1153	1007 ~ 1152	1153 ~ 1320	1321 ~

Mn

Highly
14 ~
19 ~
28 ~
01 ~
16 ~
63 ~
68 ~
14 ~
18 ~
35 ~
03 ~
21 ~



As

As (ppm)

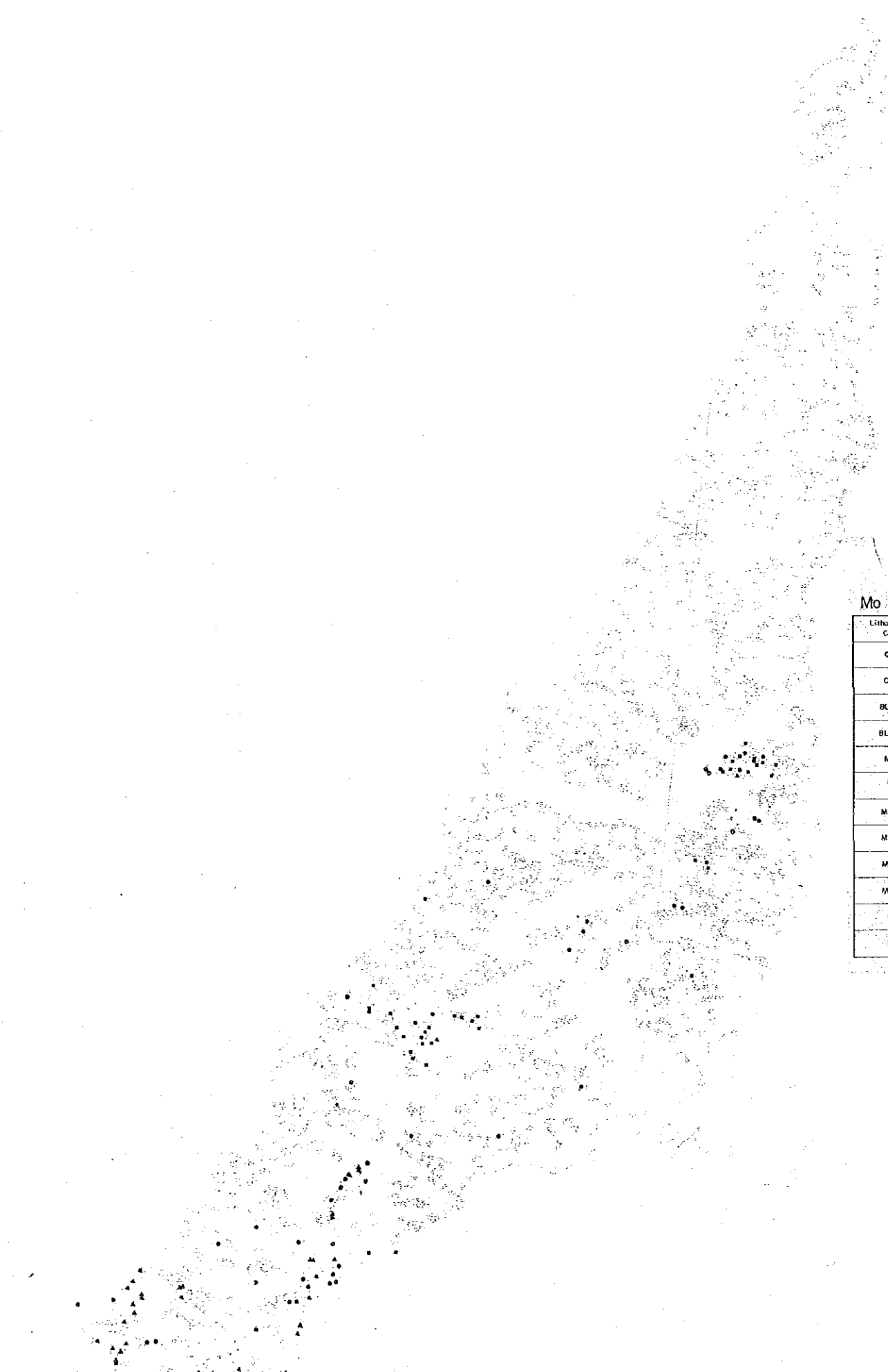
Lithological Code	Sample No.	Mean Value	Threshold Value	Anomaly		
				Feasible	Process	High
Qof	194	4	13	8 ~ 12	13 ~ 18	19 ~
CAF	181	3.2	10	6.9 ~ 9.9	10.0 ~ 14.4	14.5 ~
BLF-1	92	2.6	7.5	5.3 ~ 7.4	7.5 ~ 10.6	10.7 ~
BLF-2	367	5	12	9 ~ 11	12 ~ 14	15 ~
MIF	82	4	9	6 ~ 8	9 ~ 11	12 ~
TF	103	4	10	7 ~ 9	10 ~ 12	13 ~
MB-1	81	6	19	13 ~ 18	19 ~ 28	29 ~
MB-2	119	6	15	11 ~ 14	15 ~ 20	21 ~
MG-1	316	3	10	7 ~ 9	10 ~ 14	15 ~
MG-2	126	2	4	3.0 ~ 3.9	4.0 ~ 4.9	5.0 ~
LD	21	4	13	9 ~ 12	13 ~ 19	20 ~
BA	36	7	32	20 ~ 31	32 ~ 50	51 ~

Hg

Lithological Code	Sample No.	Mean Value	Threshold Value	Statistical Classification Table		
				possibility	Probability	Hg (ppb)
OoL	194	27	50	41 ~ 49	50 ~ 60	61 ~
CAF	1181	28	81	47 ~ 60	61 ~ 79	79 ~
BLF-1	92	26	44	37 ~ 43	44 ~ 51	52 ~
BLF-2	367	28	50	41 ~ 49	50 ~ 60	61 ~
MIF	62	23	48	37 ~ 47	48 ~ 60	61 ~
TF	103	31	67	52 ~ 66	67 ~ 85	86 ~
MB-1	81	31	60	48 ~ 59	60 ~ 74	75 ~
MB-2	119	33	59	48 ~ 58	59 ~ 70	71 ~
MB-1	316	30	65	54 ~ 64	65 ~ 83	84 ~
MS-2	126	24	49	39 ~ 48	49 ~ 60	61 ~
LD	21	34	130	83 ~ 129	130 ~ 201	202 ~
BA	36	30	54	45 ~ 53	54 ~ 65	66 ~

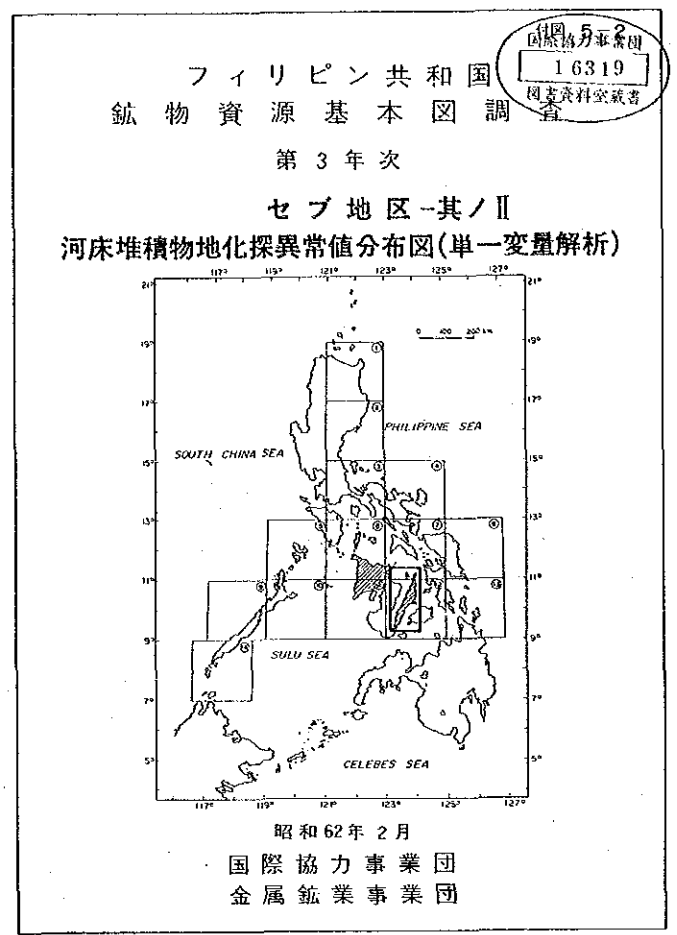
Hg

Statistical Classification Table				
Threshold Value	Anomaly			Highly
	Possibly	Probably	Highly	
50	41 ~ 49	50 ~ 60	61 ~	
61	47 ~ 60	61 ~ 78	79 ~	
44	37 ~ 43	44 ~ 51	52 ~	
50	41 ~ 49	50 ~ 60	61 ~	
48	37 ~ 47	48 ~ 60	61 ~	
67	52 ~ 66	67 ~ 85	86 ~	
60	48 ~ 59	60 ~ 74	75 ~	
59	48 ~ 58	59 ~ 70	71 ~	
65	64 ~ 64	65 ~ 83	84 ~	
49	38 ~ 48	49 ~ 60	61 ~	
130	83 ~ 129	130 ~ 201	202 ~	
54	45 ~ 53	54 ~ 65	66 ~	



Mo

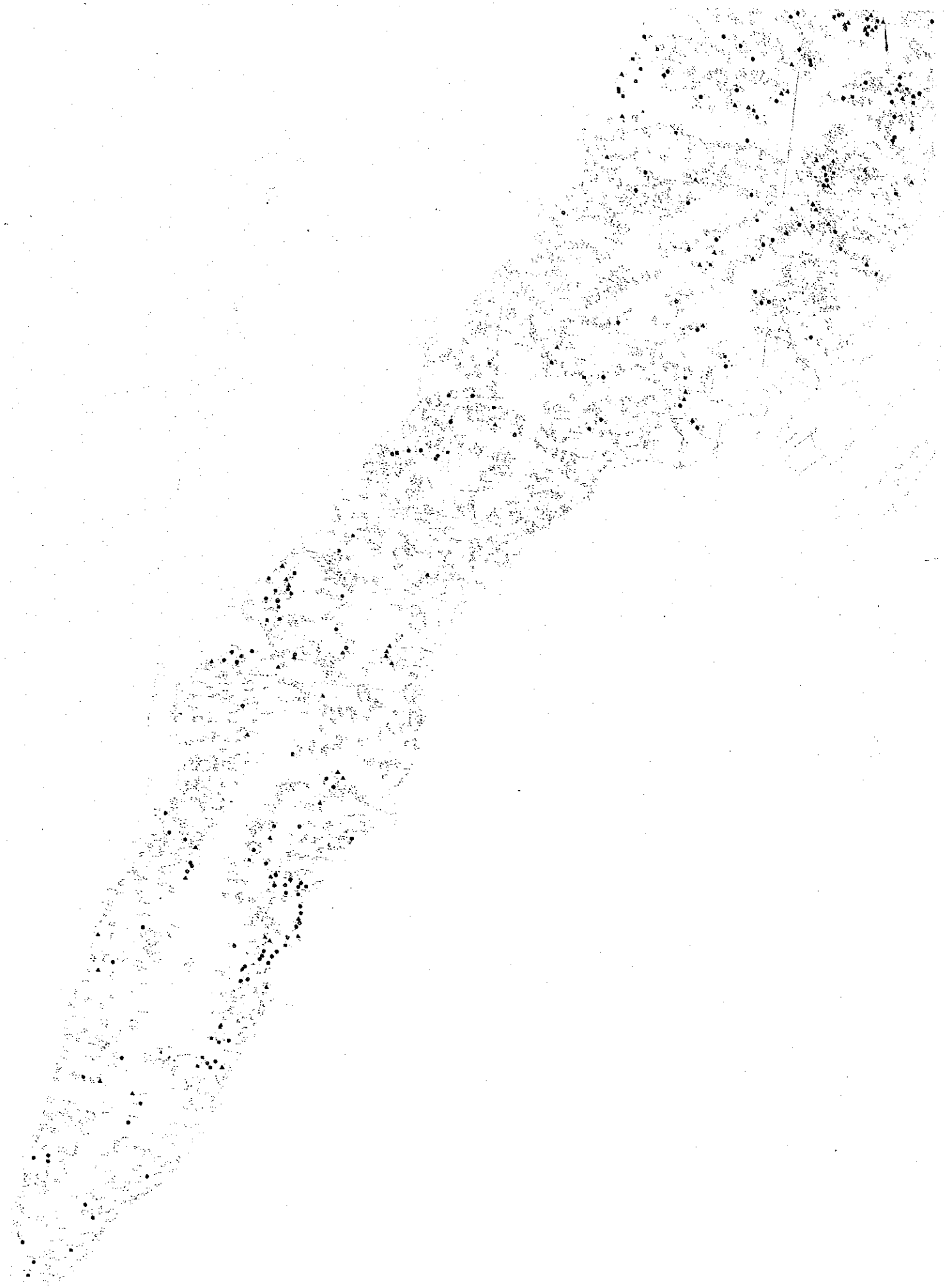
Lithological Code	Sample No.	Mean Value	Threshold Value	Anomaly		
				Possibly	Probably	Highly
Qat	194	1.3	2.9	2.2 ~ 28	29 ~ 37	3.8 ~
CAF	1181	1.6	3.8	2.9 ~ 37	3.8 ~ 54	5.2 ~
BLF-1	92	2	5	3.7 ~ 49	50 ~ 65	6.6 ~
BLF-2	367	2	4.7	3.5 ~ 46	4.7 ~ 62	6.3 ~
MIF	62	1	1.2			1.3 ~
YF	103	1.2	2.2	1.8 ~ 2.1	2.2 ~ 2.6	2.7 ~
MB-1	81	1.5	6.8	4.1 ~ 6.7	6.8 ~ 11.3	11.4 ~
MB-2	119	1.1	2.2	1.7 ~ 2.1	2.2 ~ 2.8	2.7 ~
MG-1	316	1.1	2.9	2.1 ~ 2.8	2.9 ~ 3.9	4.0 ~
MG-2	126	1.0	1.2	1.10 ~ 1.19	1.20 ~ 1.29	1.30 ~
LD	21	1.0	1.3	1.20 ~ 1.29	1.30 ~ 1.39	1.40 ~
BA	36	1.0	1.0			1.0 ~









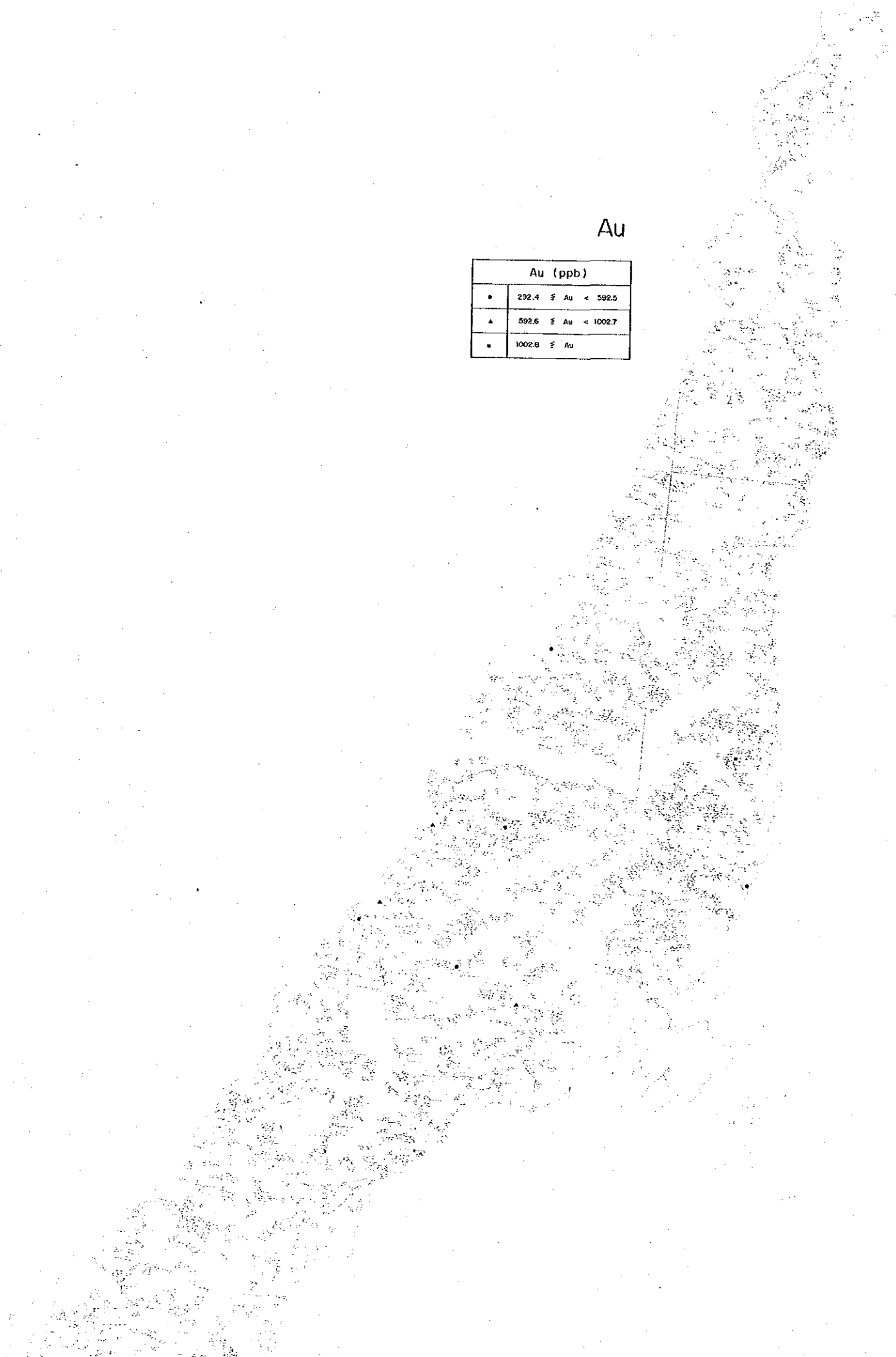




CAP	1181	1.6	3.8	2.9 ~ 3.7	3.9 ~ 5.1	5.2 ~
BLF-1	92	2	5	3.7 ~ 4.9	5.0 ~ 6.5	6.6 ~
BLF-2	367	2	4.7	3.5 ~ 4.6	4.7 ~ 6.2	6.3 ~
MIF	62	1	1.2	1.2	~	1.3 ~
TF	103	1.2	2.2	1.8 ~ 2.1	2.2 ~ 2.6	2.7 ~
MB-1	61	1.5	6.8	4.1 ~ 6.7	6.9 ~ 11.3	11.4 ~
MB-2	119	1.1	2.2	1.7 ~ 2.1	2.2 ~ 2.6	2.7 ~
MG-1	316	1.1	2.9	2.1 ~ 2.8	2.9 ~ 3.9	4.0 ~
MG-2	126	1.0	1.2	1.10 ~ 1.16	1.20 ~ 1.29	1.30 ~
LD	21	1.0	1.3	1.20 ~ 1.29	1.30 ~ 1.39	1.40 ~
BA	36	1.0	1.0	~	~	1.0 ~

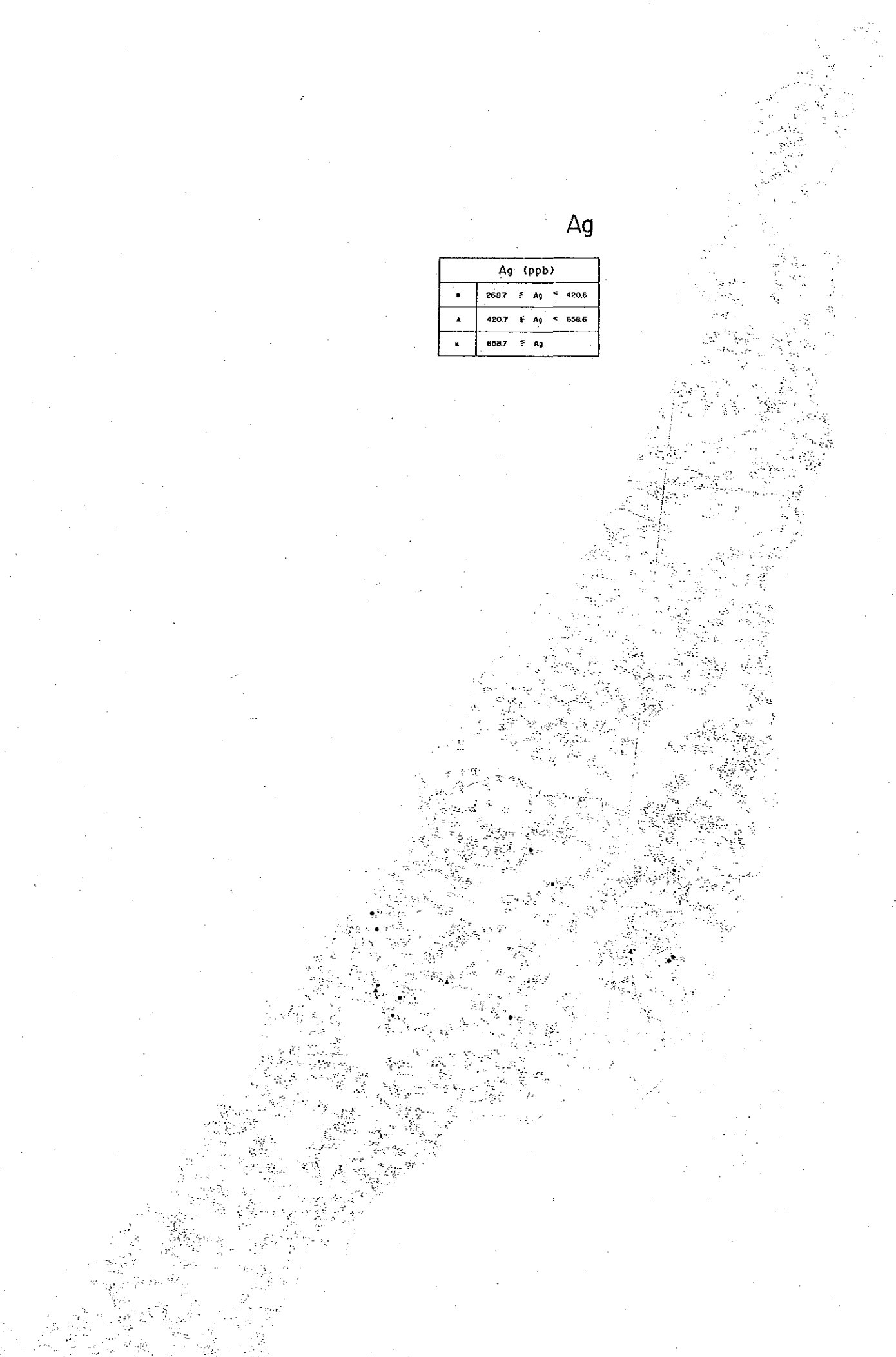
Au

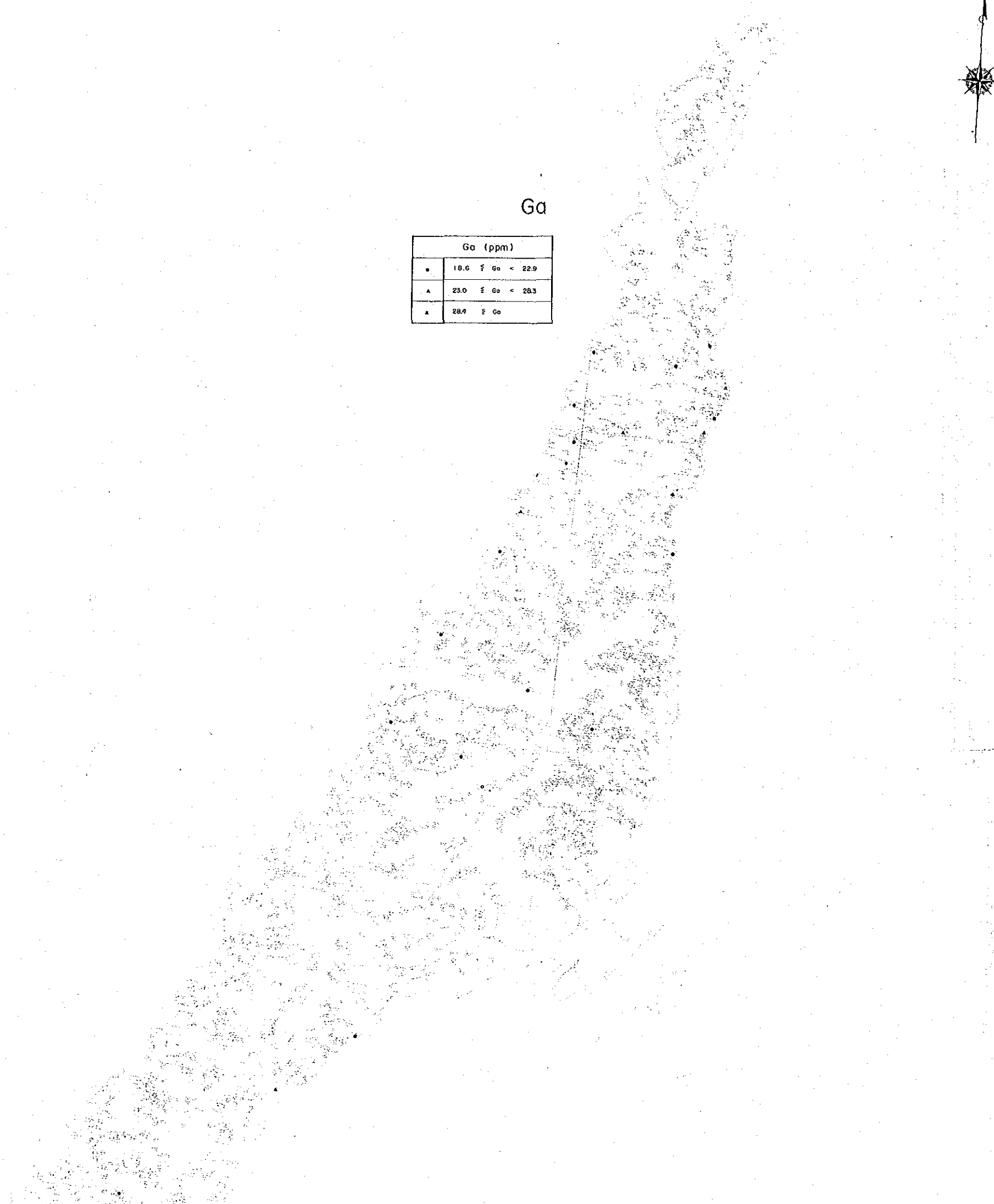
Au (ppb)	
•	292.4 ≤ Au < 592.6
▲	592.6 ≤ Au < 1002.7
■	1002.8 ≤ Au



Ag

Ag (ppb)	
•	268.7 F Ag < 420.6
▲	420.7 F Ag < 658.6
•	658.7 F Ag





Ga

Ga (ppm)	
●	18.6 ≤ Ga < 22.9
▲	23.0 ≤ Ga < 28.3
■	28.4 ≤ Ga

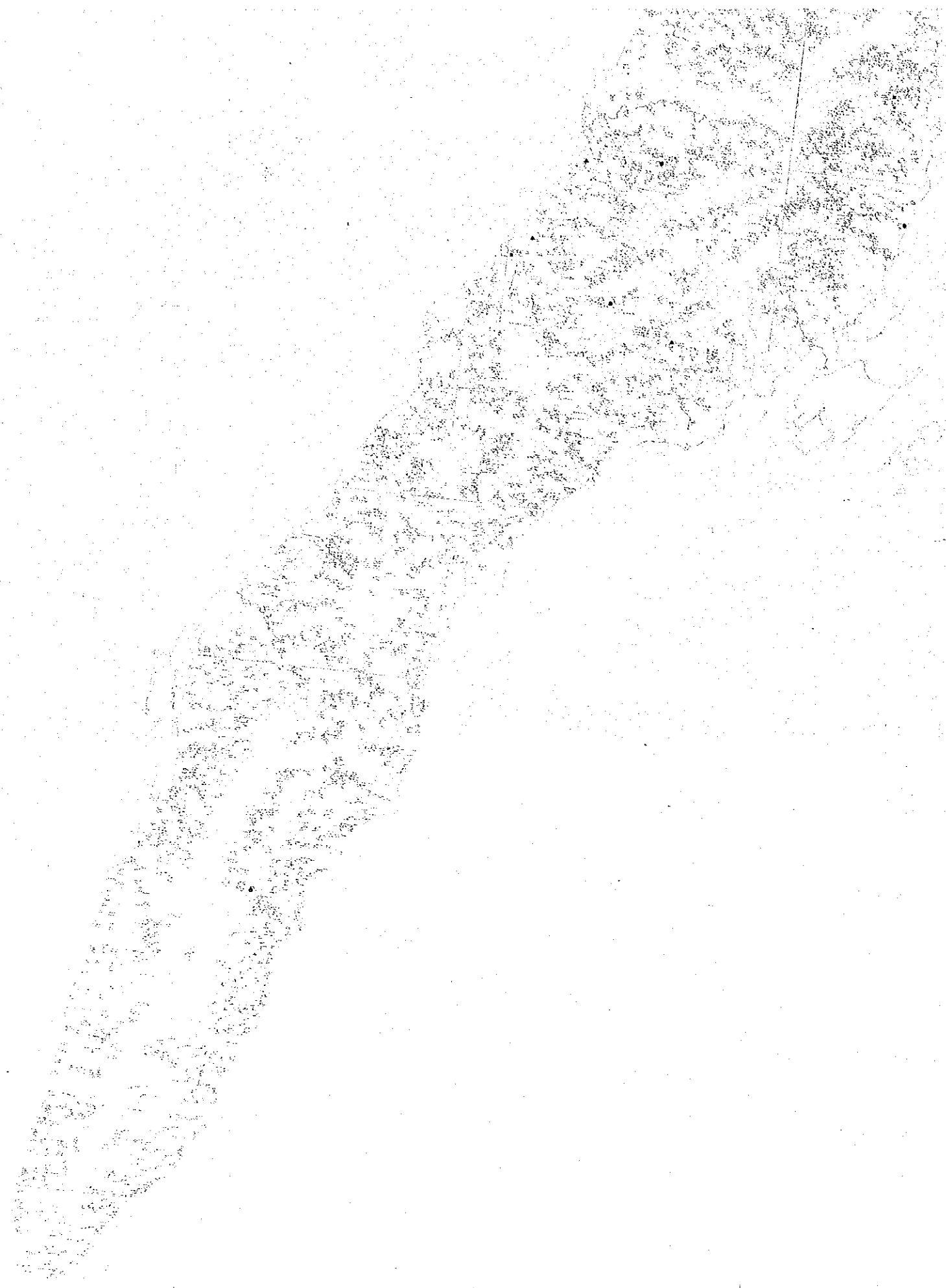


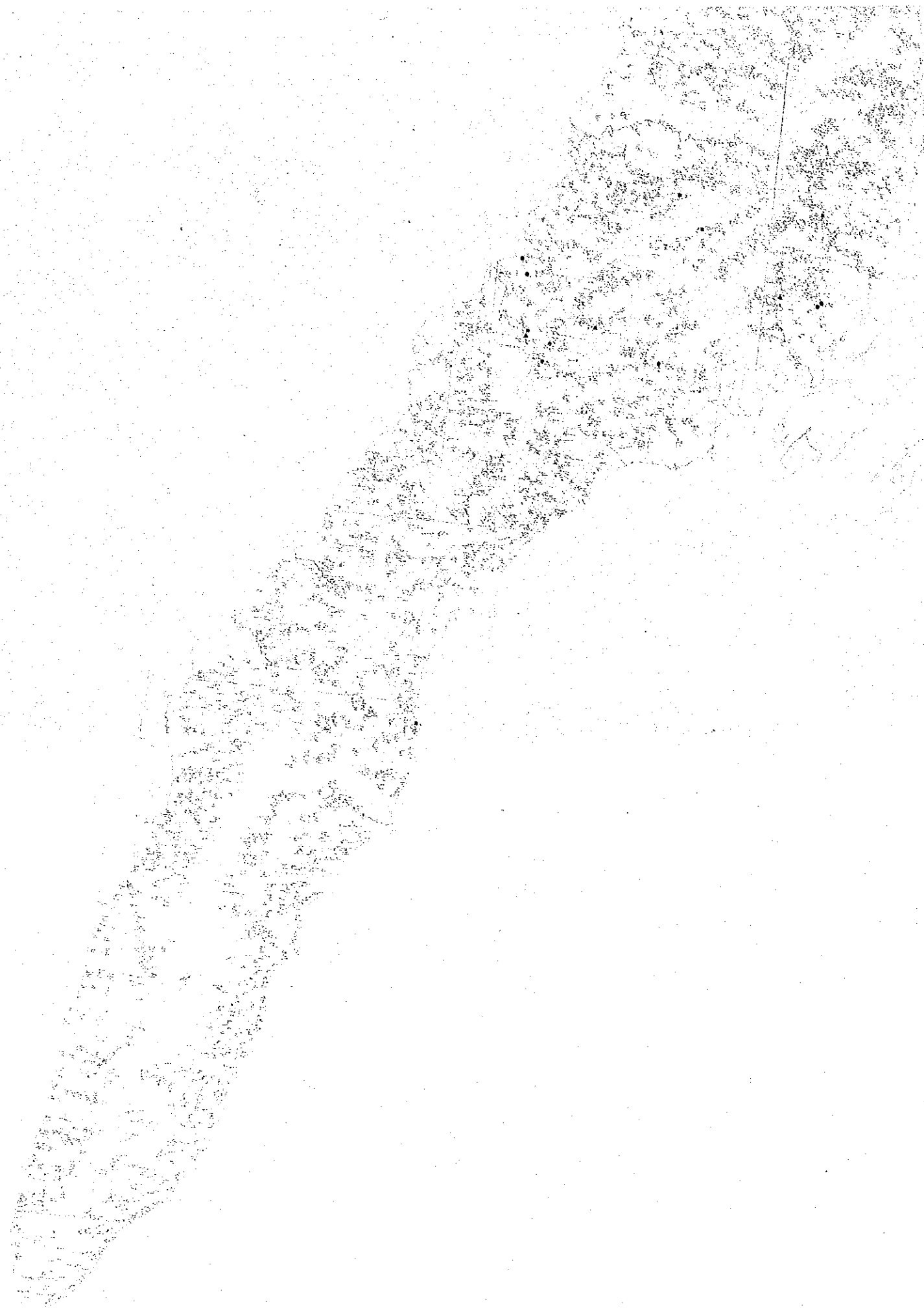
国際協力事業団
 16319
 国書資料室蔵書

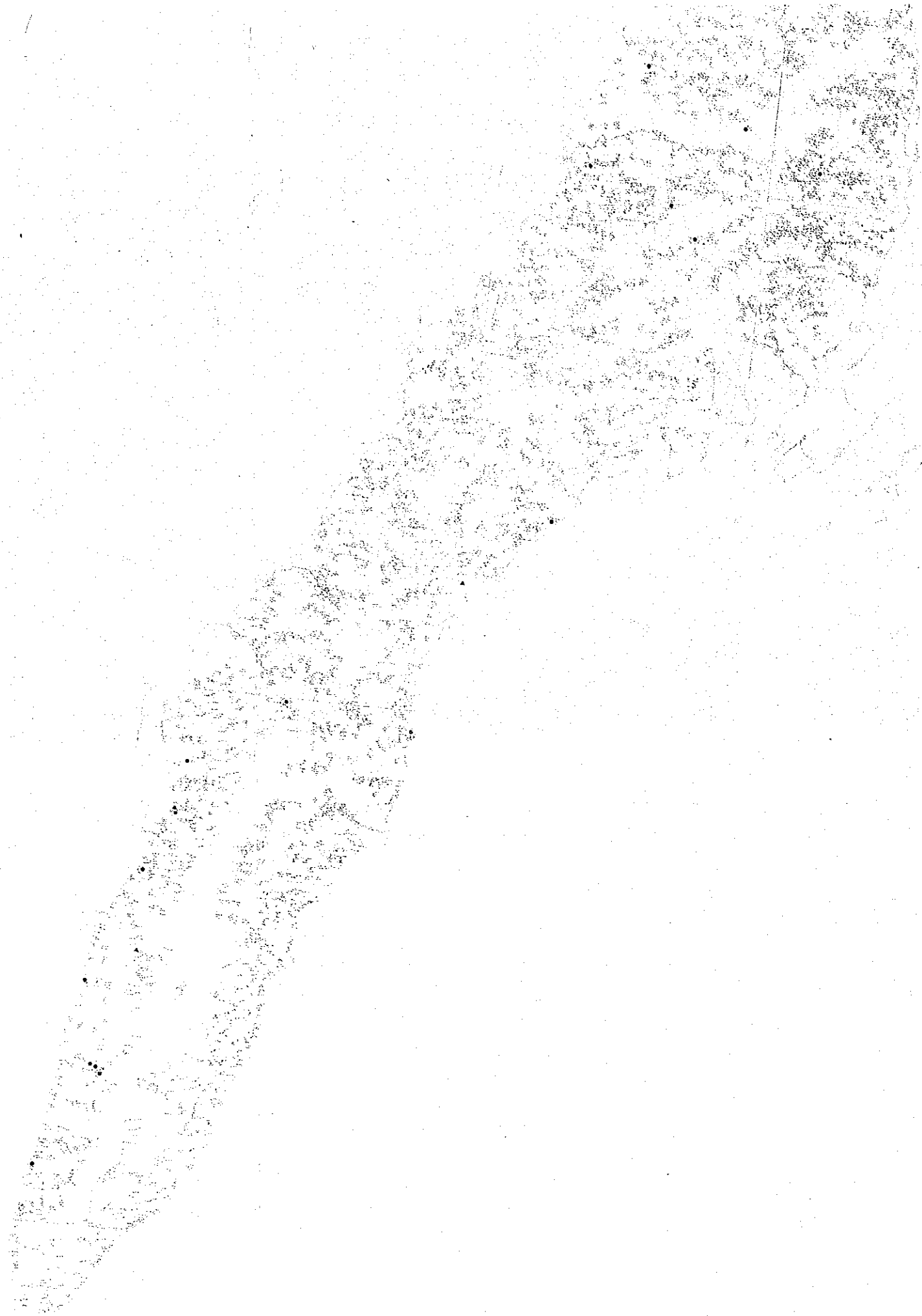
フィリピン共和国
 鉱物資源基本図調査
 第3年次
 セブ地区
 重鉱物地化探異常値分布図

昭和62年2月
 国際協力事業団
 金属鉱業事業団

Scale 1 : 250,000







Cu

Lithological Code	Sample No.	Mean Value	Threshold Value	Anomaly		
				Priority	Process	High
sch	219	20	57	40 ~ 56	57 ~ 81	82 ~
op	116	26	65	48 ~ 64	65 ~ 89	89 ~
pl	53	28	77	56 ~ 76	77 ~ 106	107 ~
py	86	45	79	66 ~ 78	79 ~ 94	95 ~
sd	185	29	66	50 ~ 65	66 ~ 88	87 ~
out	221	23	61	44 ~ 60	61 ~ 84	85 ~



Pb

Pb (ppm)

Lithological Code	Sample No.	Mean Value	Threshold Value	Anomaly		
				Possibly	Probably	Highly
Sch	219	5	19	12 ~ 18	19 ~ 28	29 ~
Op	116	1	8	5 ~ 7	8 ~ 14	15 ~
Pl	53	8	69	33 ~ 67	68 ~ 139	140 ~
Pr	86	1	3	20 ~ 2.9	3.0 ~ 3.9	4.0 ~
Sd	185	2	9	6 ~ 8	9 ~ 13	14 ~
Gof	221	3	17	10 ~ 15	17 ~ 28	29 ~

Zn

Lithological Code	Sample No.	Mean Value	Threshold Value	Accuracy		
				Possibly	Probably	Highly
Sch	219	43	91	71 ~ 90	91 ~ 116	117 ~
Op	116	44	107	80 ~ 106	107 ~ 143	144 ~
Pt	53	76	168	139 ~ 187	188 ~ 251	252 ~
Pr	86	68	114	96 ~ 113	114 ~ 130	131 ~
Sd	185	54	105	84 ~ 104	105 ~ 129	130 ~
Zn	121	82	113	87 ~ 112	113 ~ 146	147 ~



Ag

Lithological Code	Sample No.	Mean Value	Threshold Value	Anomaly		
				Possibly	Probably	Highly
Sch	219	0.10	0.13	0.120-0.129	0.130-0.139	0.140~
Op	116	0.10	0.19	0.15~0.18	0.19~0.21	0.22~
Pl	53	0.12	0.27	0.21~0.26	0.27~0.34	0.35~
Pr	86	0.11	0.16	0.14~0.15	0.16~0.17	0.18~
Sd	185	0.10	0.13	0.120-0.129	0.130-0.139	0.140~
Qof	221	0.10	0.15	0.130-0.149	0.150-0.159	0.160~

Ni

Lithological Code	Sample No.	Mean Value	Threshold Value	Anomaly		
				Possible	Probable	Highly
Sch	219	22	155	81 ~ 154	155 ~ 290	298 ~
Op	116	369	6077	2388 ~ 6076	6077 ~ 15461	15462 ~
PL	53	48	882	335 ~ 881	882 ~ 2319	2320 ~
Pr	86	42	170	107 ~ 169	170 ~ 260	270 ~
Sd	185	36	174	103 ~ 173	174 ~ 284	295 ~
Ool	227	39	371	176 ~ 370	371 ~ 763	764 ~



NI

Lithological Code	Sample No.	Mean Value	Threshold Value	Anomaly Frequency		
				Possibly	Highly	Highly
Sch	219	22	155	61 ~ 154	155 ~ 295	296 ~
Op	116	369	6077	2366 ~ 6076	6077 ~ 15461	15462 ~
Pt	53	48	882	335 ~ 881	882 ~ 2319	2320 ~
Pr	88	42	170	107 ~ 169	170 ~ 269	270 ~
Sd	165	56	174	105 ~ 173	174 ~ 294	295 ~
Ool	227	39	371	176 ~ 370	371 ~ 793	794 ~

フィリピン共和国
 鉱物資源基本図調
 第3年次
 パナイ及びロンブロン地区-其ノI
 河床堆積物地化探異常値分布図(単一変量解析)

16319
 地球資源調査

昭和62年2月
 国際協力事業団
 金属鉱業事業団

Scale 1 : 250,000





Cu

Lithological Code	Sample No.	Mean Value	Threshold Value	Anomaly		
				Classification Table		
				Possibly	Probably	Highly
Sch	140	34	62	51 ~ 61	62 ~ 75	76 ~
Op	215	51	91	75 ~ 90	91 ~ 110	111 ~
Pt	391	29	117	74 ~ 116	117 ~ 185	186 ~
My	275	53	75	67 ~ 74	75 ~ 84	85 ~
Pr	1182	51	110	85 ~ 109	110 ~ 141	142 ~
Sd	3567	46	86	70 ~ 85	86 ~ 105	106 ~
Ool	1807	35	86	64 ~ 85	86 ~ 114	115 ~

Cu

Statistical Classification Table					
Mean Value	Threshold Value	Anomaly			
		Possibly	Probably	Highly	
34	62	51 ~ 61	62 ~ 75	76 ~	
51	91	75 ~ 90	91 ~ 110	111 ~	
29	117	74 ~ 116	117 ~ 165	166 ~	
53	75	67 ~ 74	75 ~ 84	85 ~	
51	110	95 ~ 109	110 ~ 141	142 ~	
46	86	70 ~ 85	86 ~ 106	106 ~	
35	86	64 ~ 85	86 ~ 114	115 ~	



Pb

Statistical Classification Table					
Lithological Code	Sample No.	Mean Value	Threshold Value	Anomaly	
				Possibly	Probably
Sch	140	5	9	7 ~ 8.9	10 ~ 11
Op	215	6	10	9.0 ~ 9.9	10.0 ~ 12.9
Pl	391	5	9	7 ~ 8.9	10 ~ 11
Mp	275	5	6	5	6
Pr	1182	5	8	7.0 ~ 7.9	8.0 ~ 8.9
Sd	3367	5	7	6.0 ~ 6.9	7.0
Ocf	1807	5	6	6.0	7.0

Pb

Lithological Code	Sample No.	Mean Value	Threshold Value	Anomaly		
				Possibly	Probably	Highly
Sh	140	5	9	7 ~ 8.9	~ 10	11 ~
Op	215	6	10	9.0 ~ 9.9	10.0 ~ 12.9	13.0 ~
Pl	391	5	9	7 ~ 8.9	~ 10	11 ~
Hp	275	5	6	5	~ 6	~
Pr	1182	5	8	7.0 ~ 7.9	8.0 ~ 8.9	9.0 ~
Sd	3367	5	7	6.0 ~ 6.9	7.0	~
Ool	1807	5	6	6.0	~ 7.0	~

Zn

Lithological Code	Sample No.	Mean Value	Threshold Value	Anomaly		
				Possibly	Probably	Highly
Sh	140	65	107	90 ~ 106	107 ~ 125	126 ~
Op	215	63	110	91 ~ 109	110 ~ 132	133 ~
Pl	391	32	109	72 ~ 108	109 ~ 163	164 ~
Hp	275	73	105	93 ~ 104	105 ~ 118	119 ~
Pr	1182	67	151	115 ~ 150	151 ~ 196	197 ~
Sd	3367	70	119	100 ~ 118	119 ~ 142	143 ~
Ool	1807	53	144	103 ~ 143	144 ~ 196	200 ~

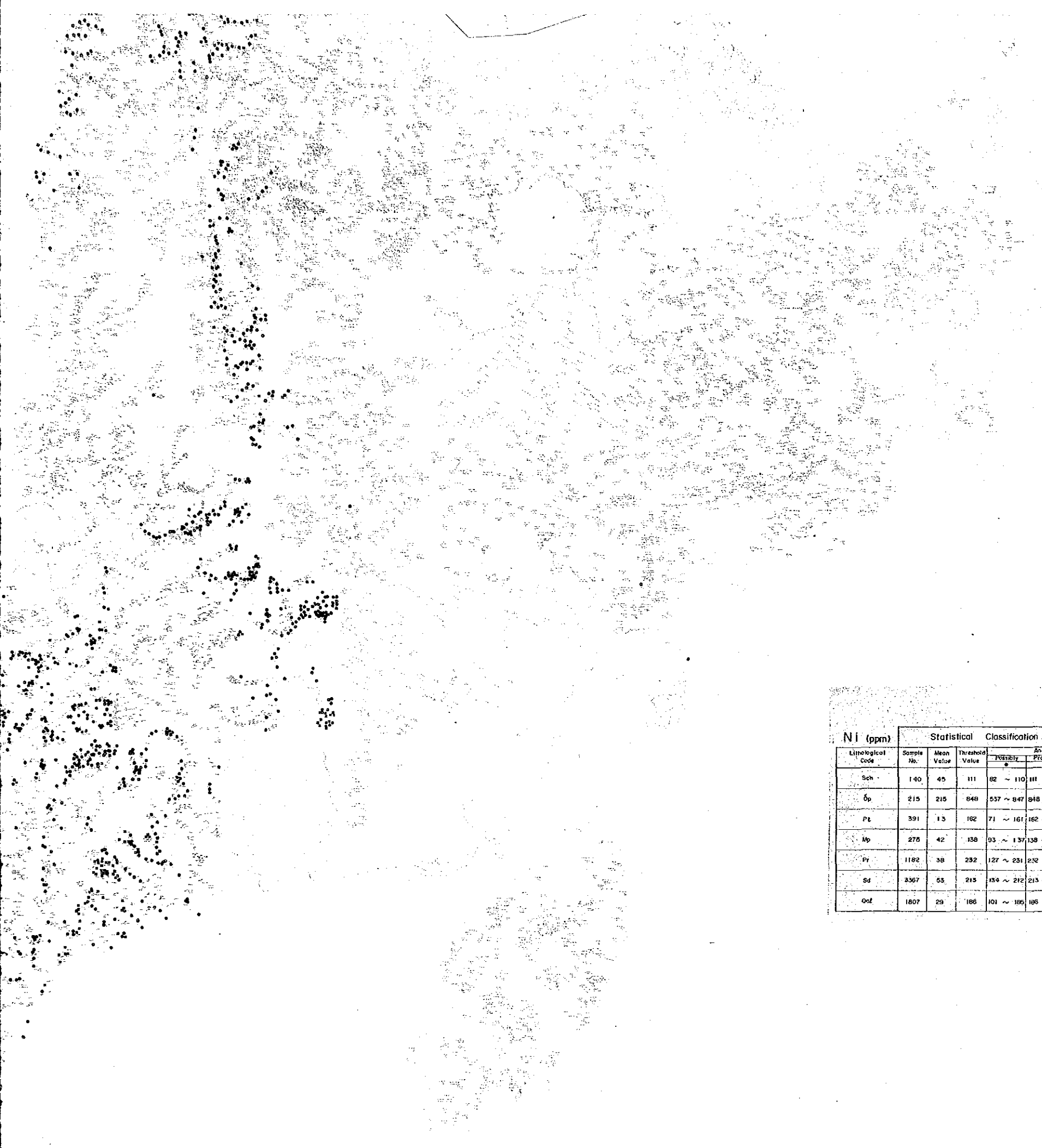
Zn

Lithological Code	Sample No.	Mean Value	Threshold Value	Anomaly		
				Positvly	Probably	Highly
Sch	140	65	107	90 ~ 106	107 ~ 125	126 ~
Op	215	63	110	91 ~ 109	110 ~ 132	133 ~
Pz	391	32	109	72 ~ 108	109 ~ 163	164 ~
Mp	275	73	105	93 ~ 104	105 ~ 118	119 ~
Pr	1182	67	151	115 ~ 150	151 ~ 196	197 ~
Sd	3367	70	119	100 ~ 118	119 ~ 142	143 ~
Ool	1807	55	144	103 ~ 143	144 ~ 199	200 ~

Ag
un

Ag

Lithological Code	Sample No.	Mean Value	Threshold Value	Anomaly		
				Possibly	Probably	Highly
Sch	140	0.5	0.5			
Op	215	0.5	0.5			
PL	391	0.51	0.65	0.61 ~ 0.64	0.65 ~ 0.69	0.70 ~
Mp	275	0.5	0.53	0.520 ~ 0.529	0.530 ~ 0.539	0.540 ~
Pr	1182	0.50	0.52	0.510 ~ 0.519	0.520	
Sd	3367	0.50	0.53	0.520 ~ 0.529	0.530 ~ 0.539	0.550 ~
Qz	1807	0.50	0.54	0.530 ~ 0.539	0.540 ~ 0.549	0.560 ~



Ni

Lithological Code	Sample No.	Mean Value	Threshold Value	Anomaly		
				Possible	Probable	Highly
Sch	140	45	111	82 ~ 110	111 ~ 149	150 ~
Op	215	215	848	537 ~ 847	848 ~ 1337	1338 ~
Pl	391	13	162	71 ~ 161	162 ~ 266	267 ~
Ip	276	42	138	93 ~ 137	138 ~ 201	202 ~
Pr	1182	38	232	127 ~ 231	232 ~ 422	423 ~
Sd	3367	55	215	154 ~ 212	213 ~ 337	338 ~
Qc	1807	29	186	101 ~ 185	186 ~ 342	343 ~