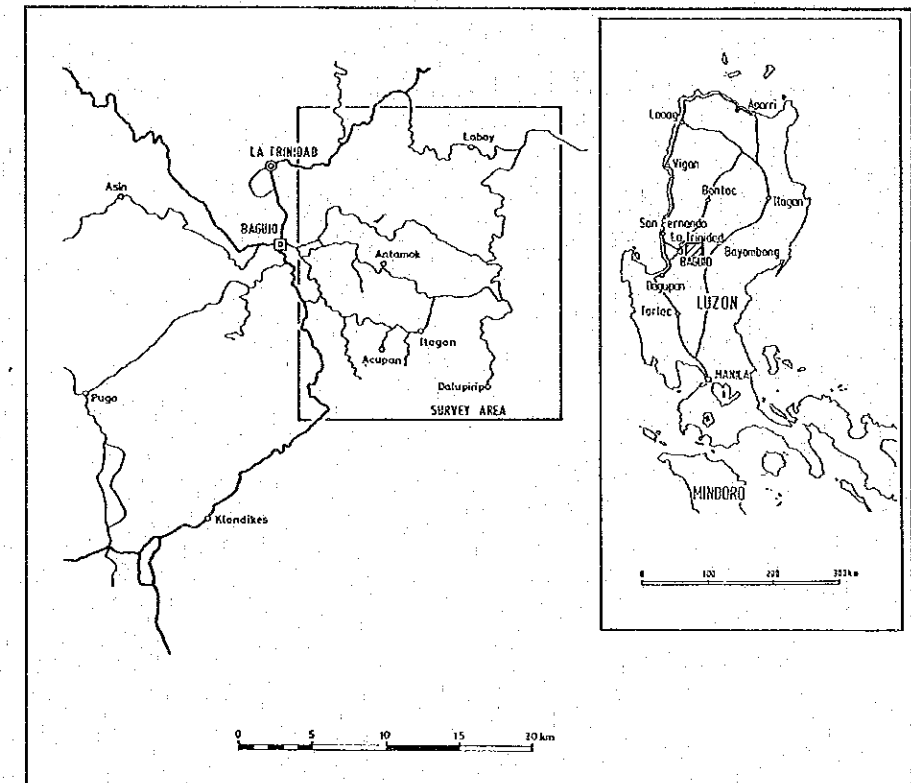


Acupan Itogon Geothermal Development Survey
the Republic of the Philippines

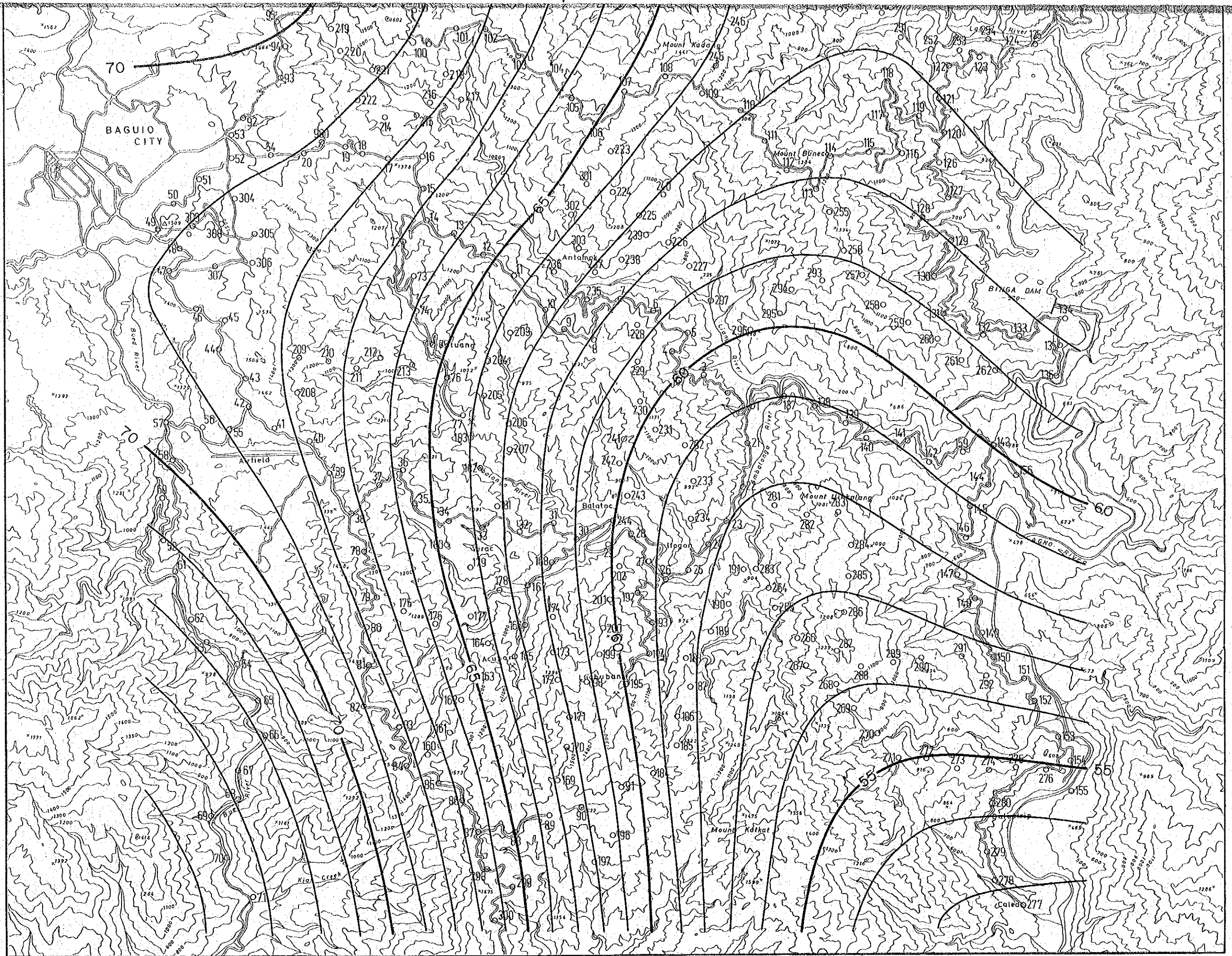
Fig.II-3-14 Regional Map ($\lambda \geq 10.2$)

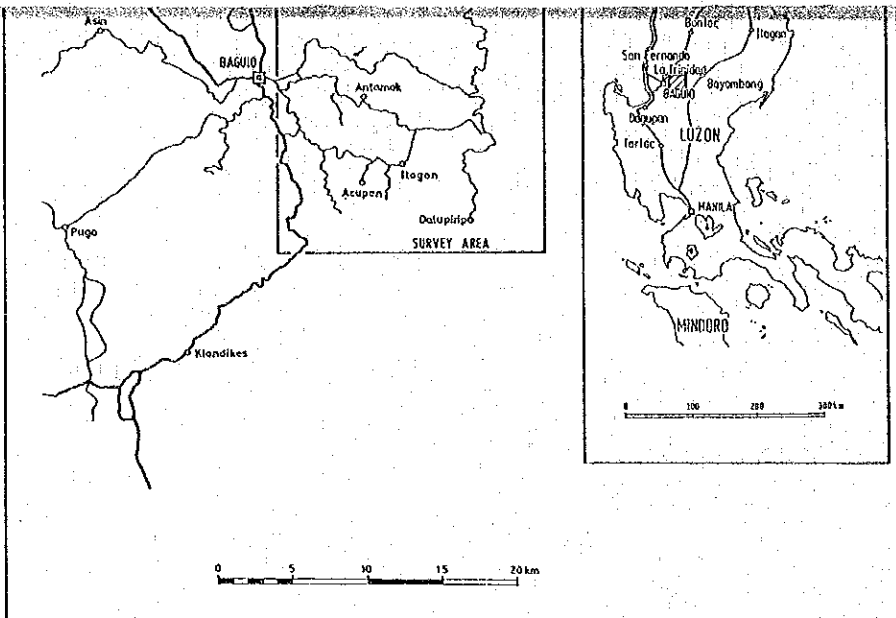
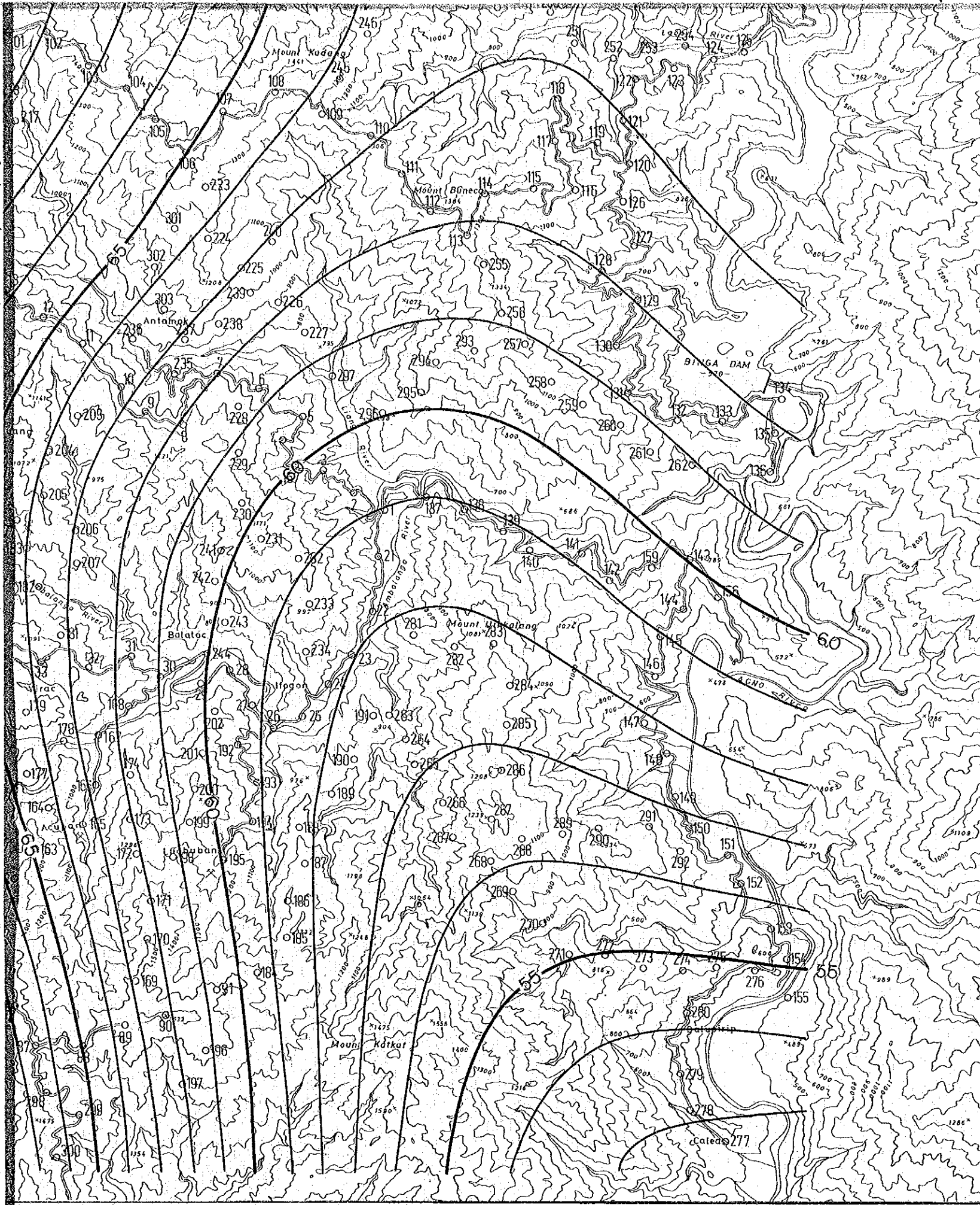


Japan International Cooperation Agency

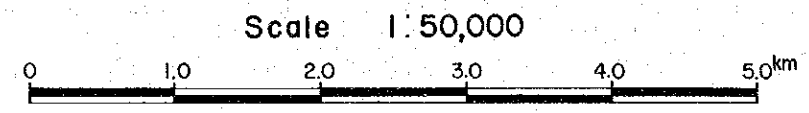
Scale 1:50,000

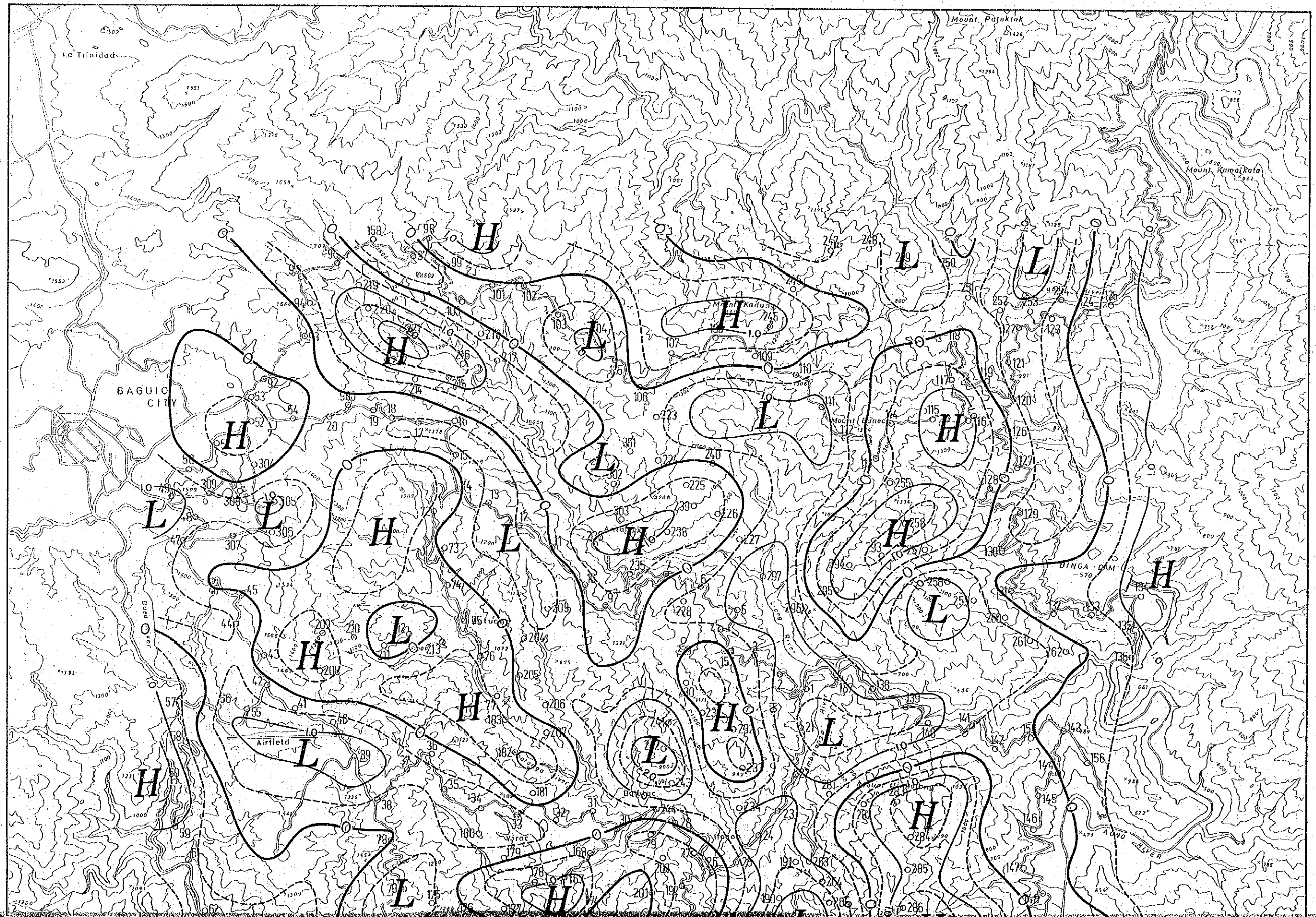


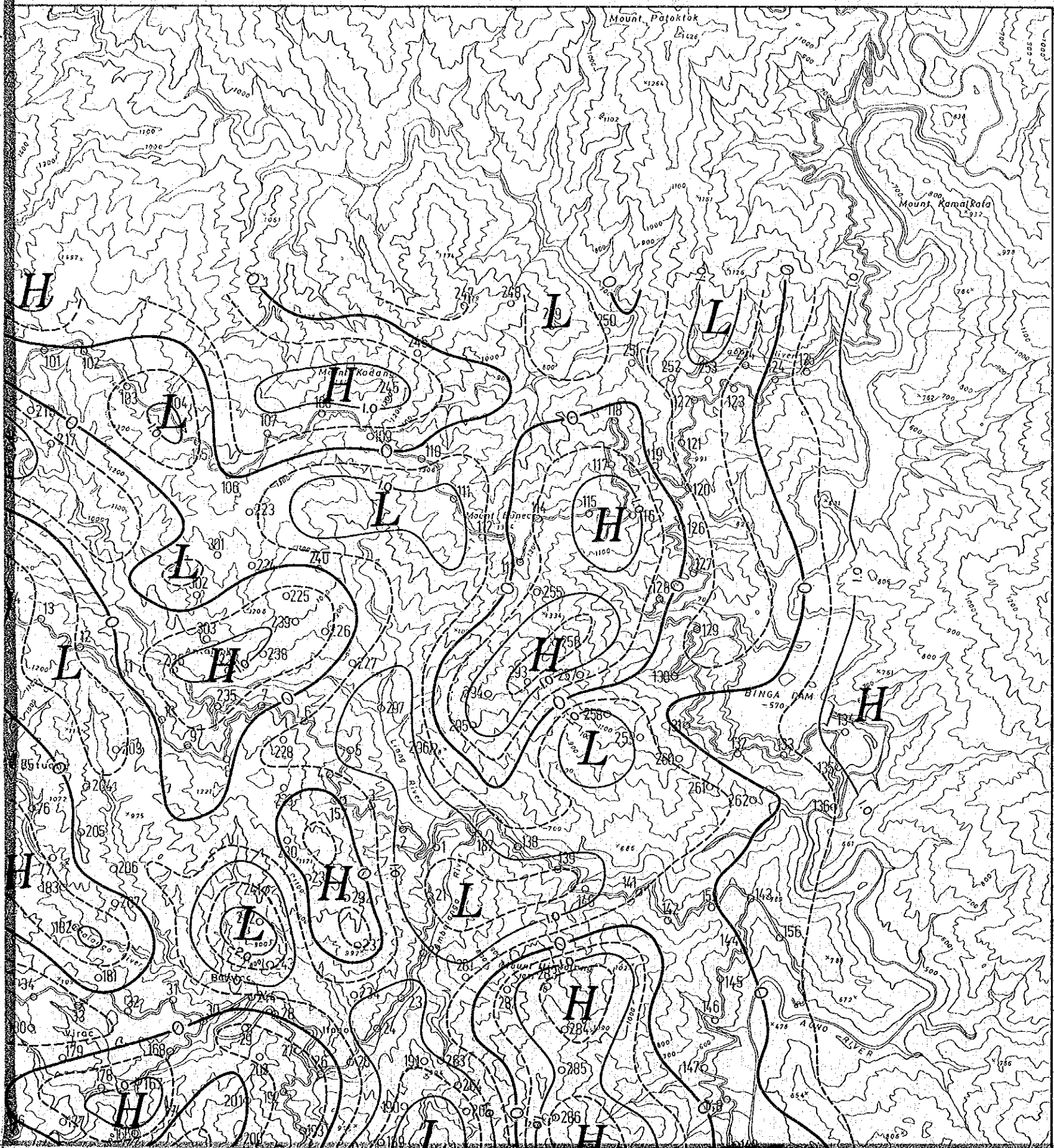




Japan International Cooperation Agency

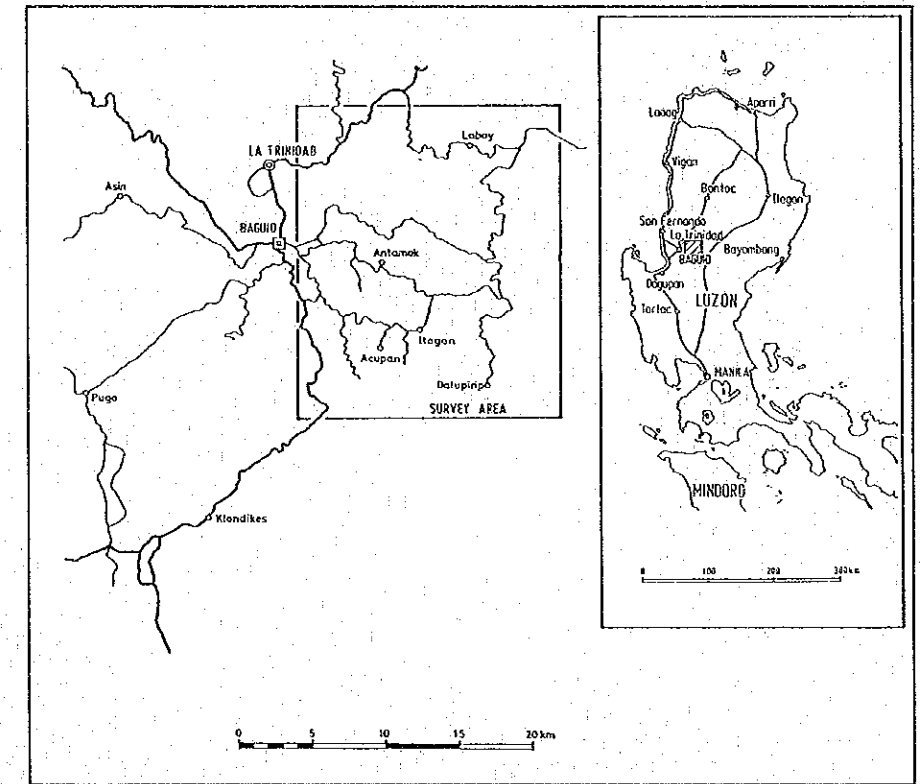




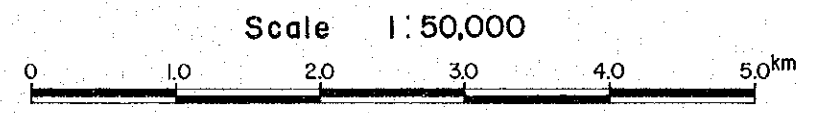


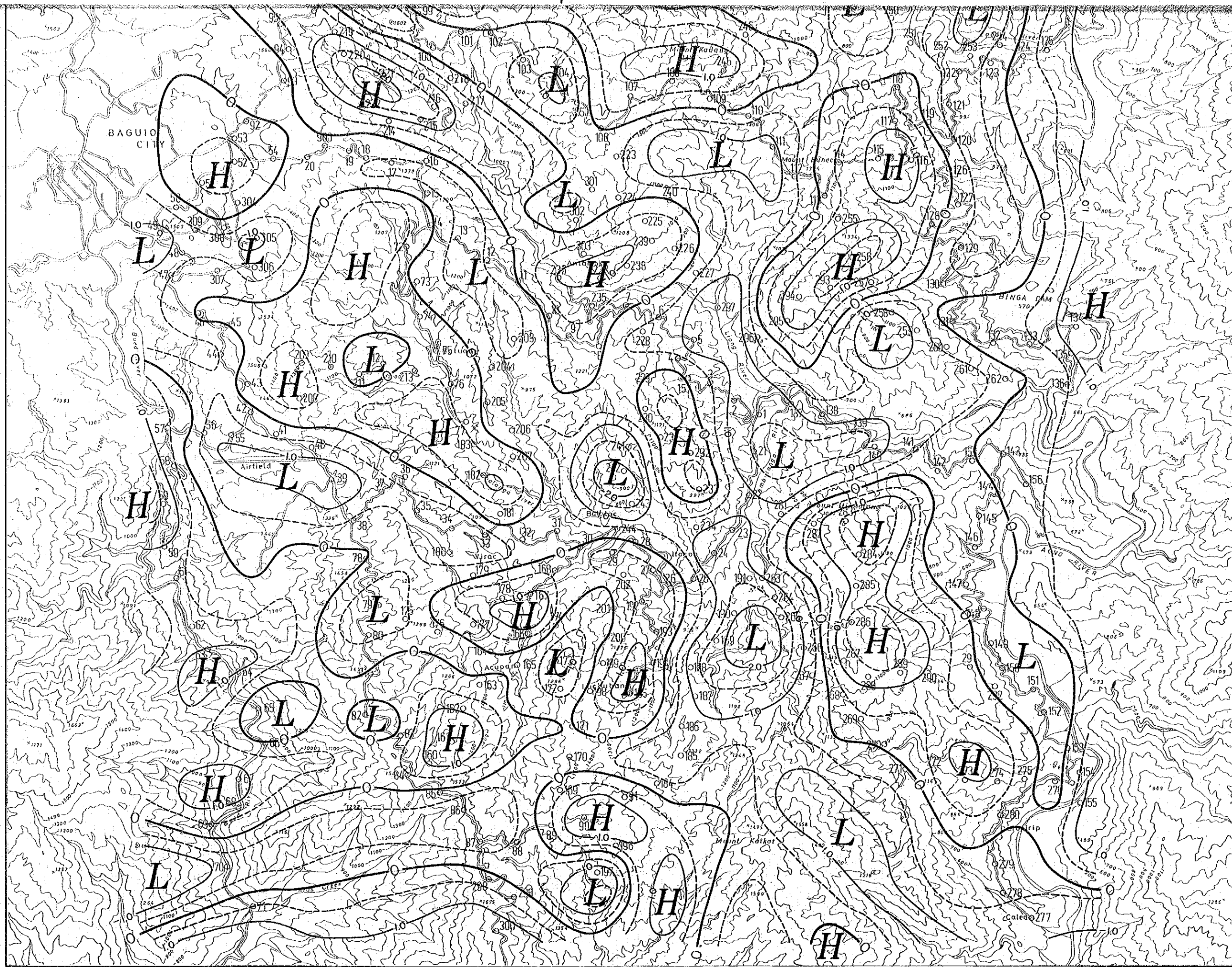
Acupan Itogon Geothermal Development Survey
the Republic of the Philippines

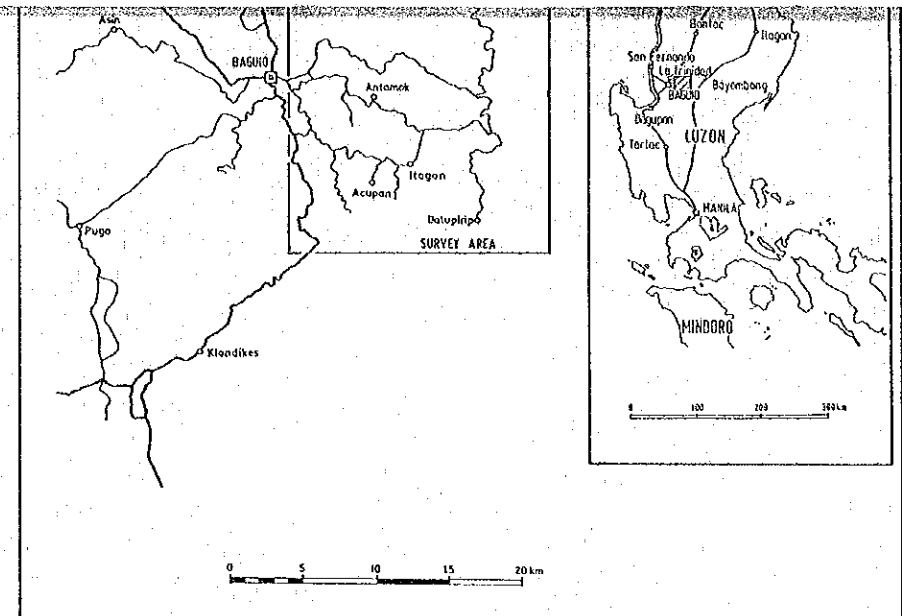
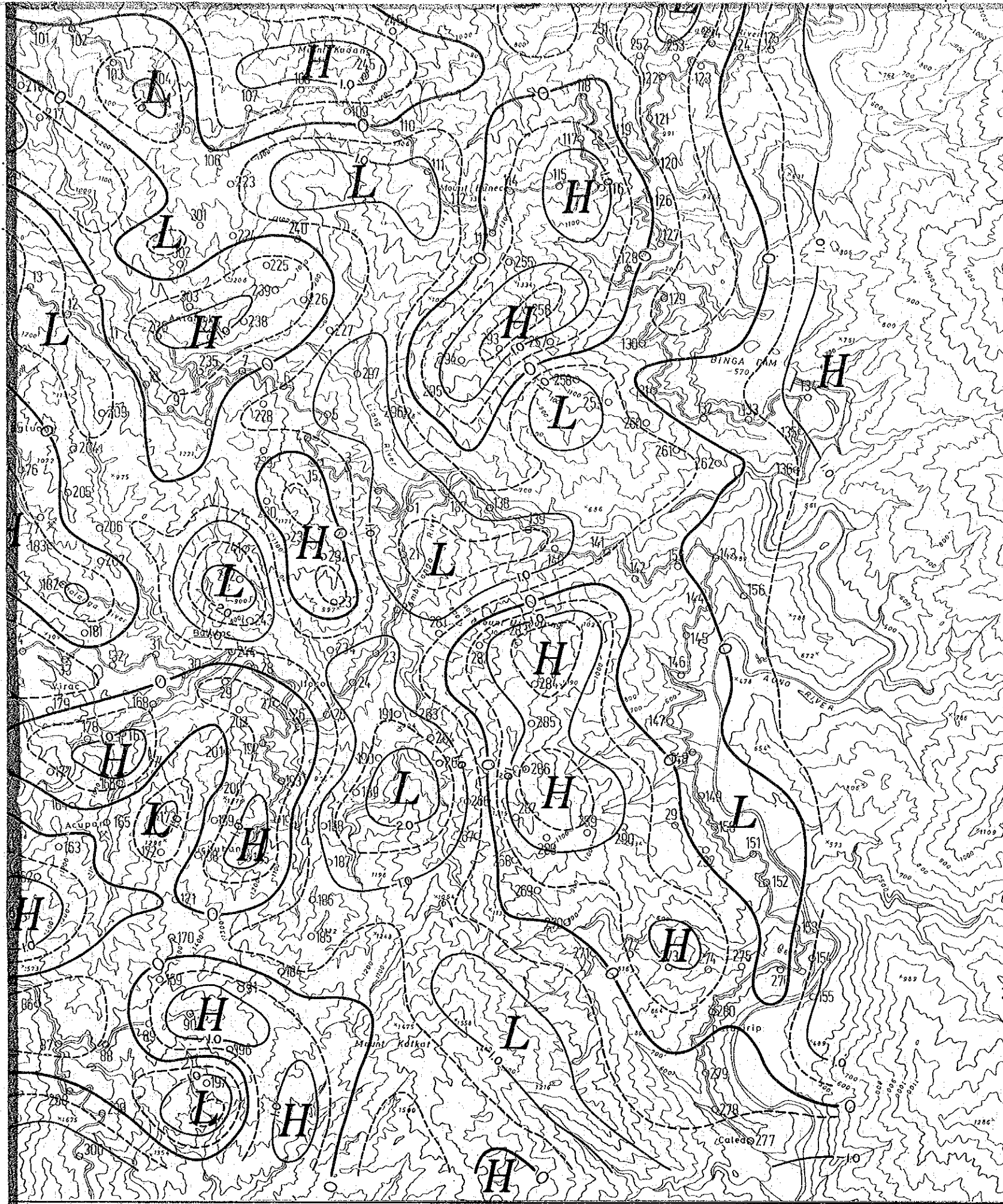
Fig.II-3-15 Second Derivative Map



Japan International Cooperation Agency

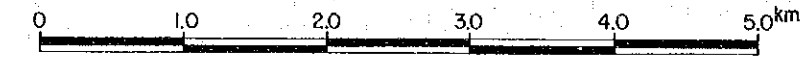


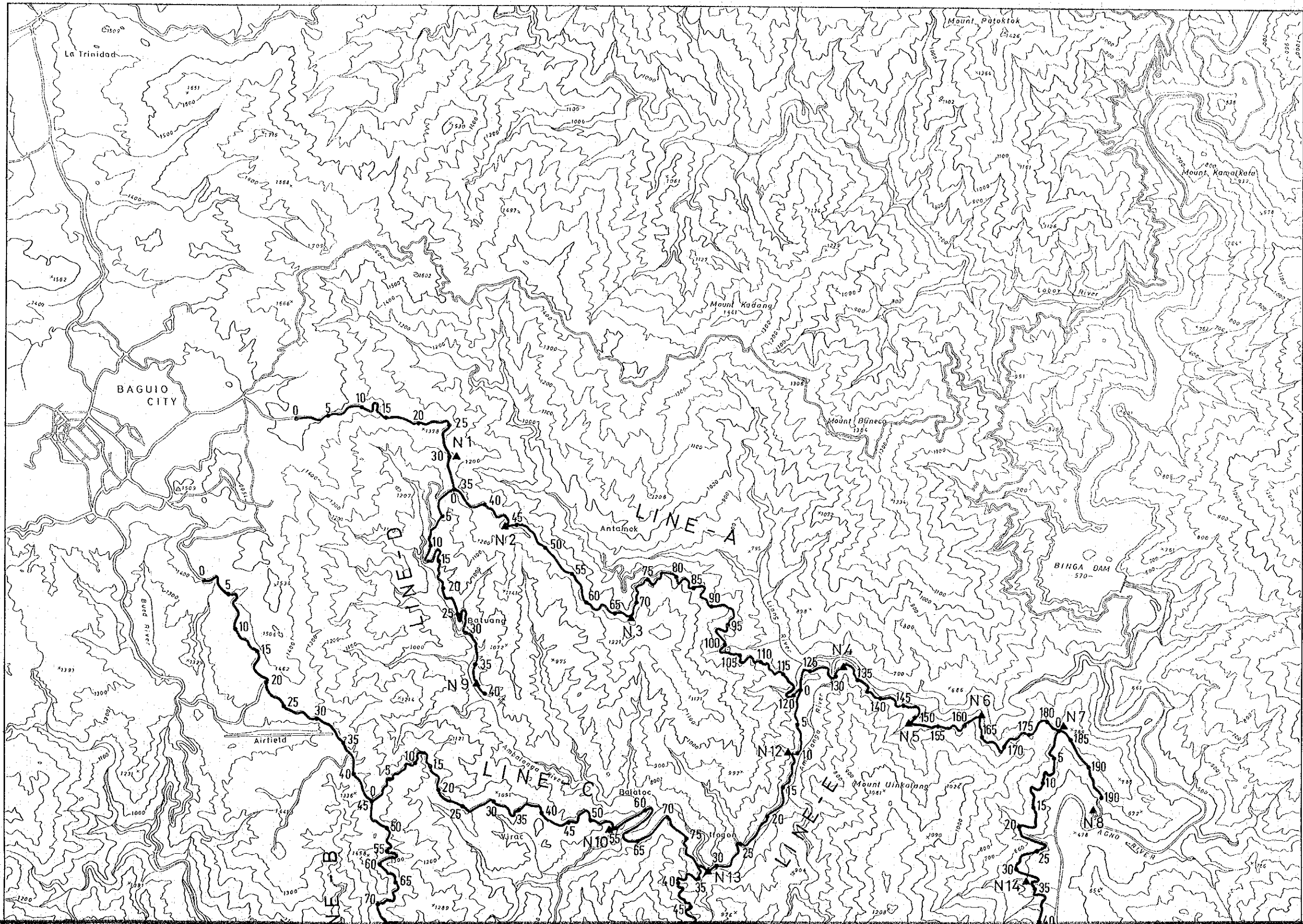


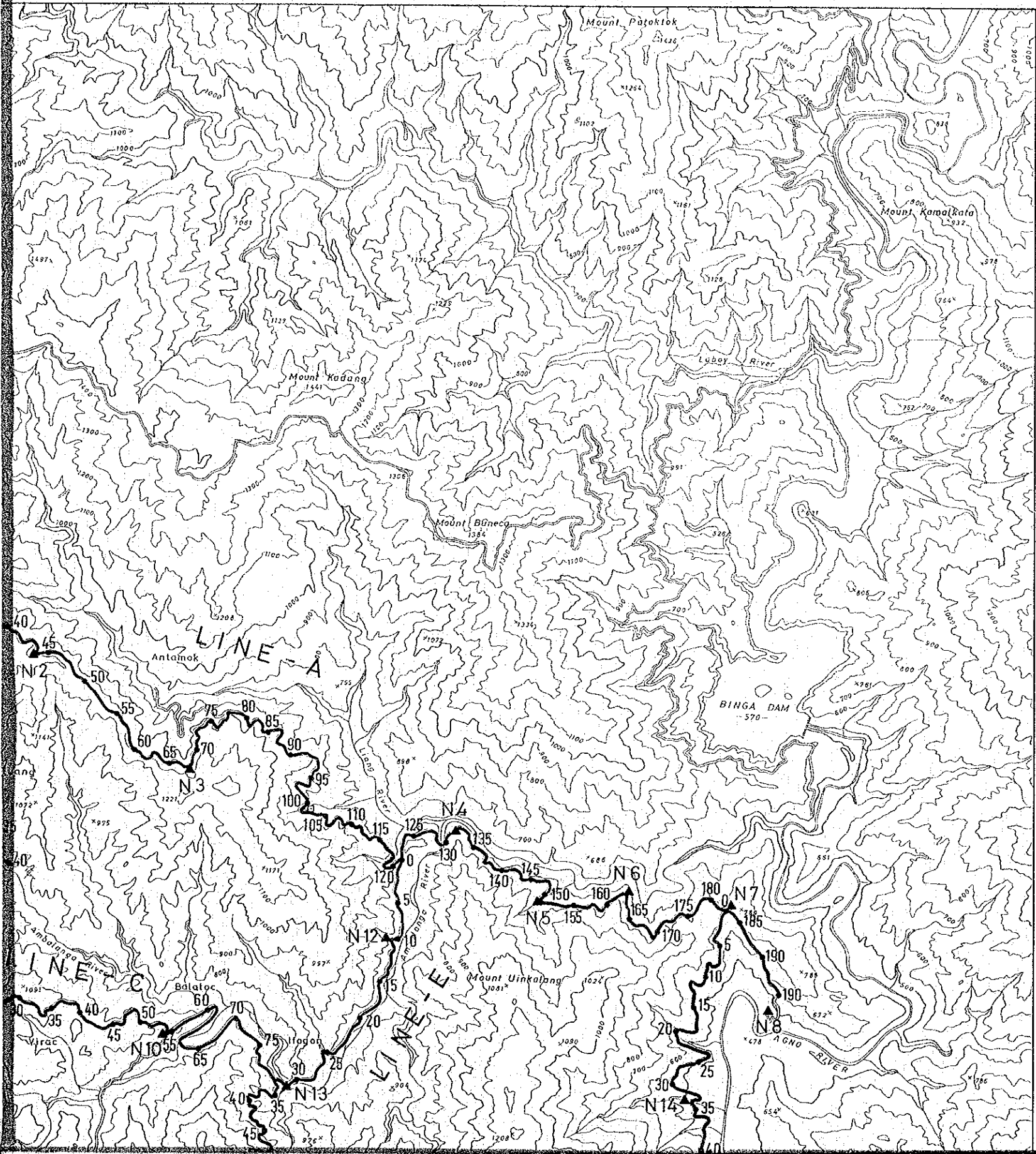


Japan International Cooperation Agency

Scale 1:50,000

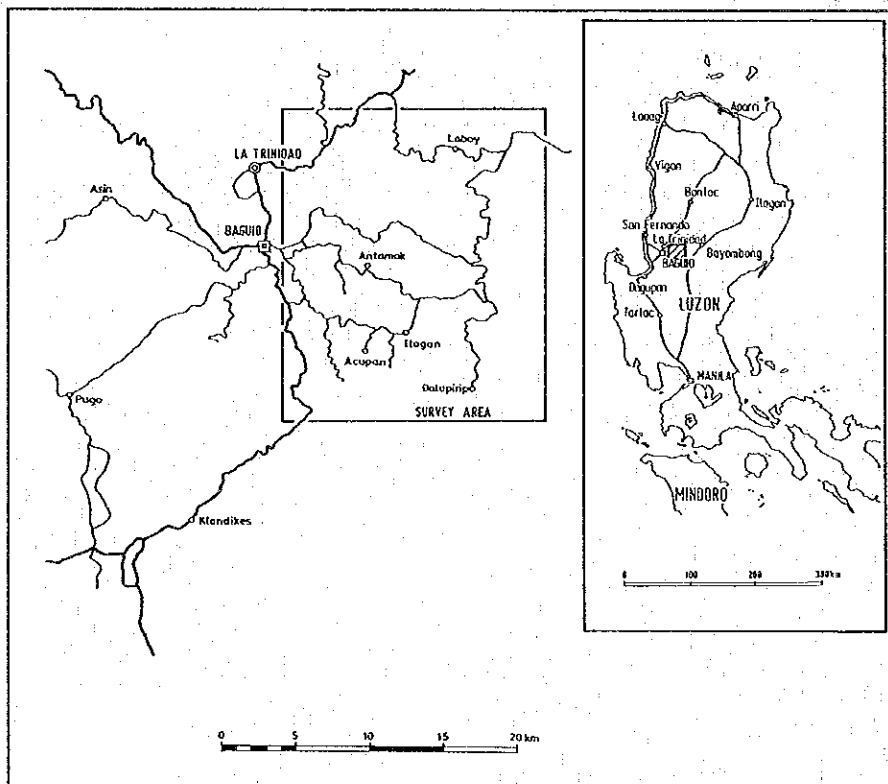






Acupan Itogon Geothermal Development Survey
the Republic of the Philippines

Fig.II-4-4 Noise Waveform



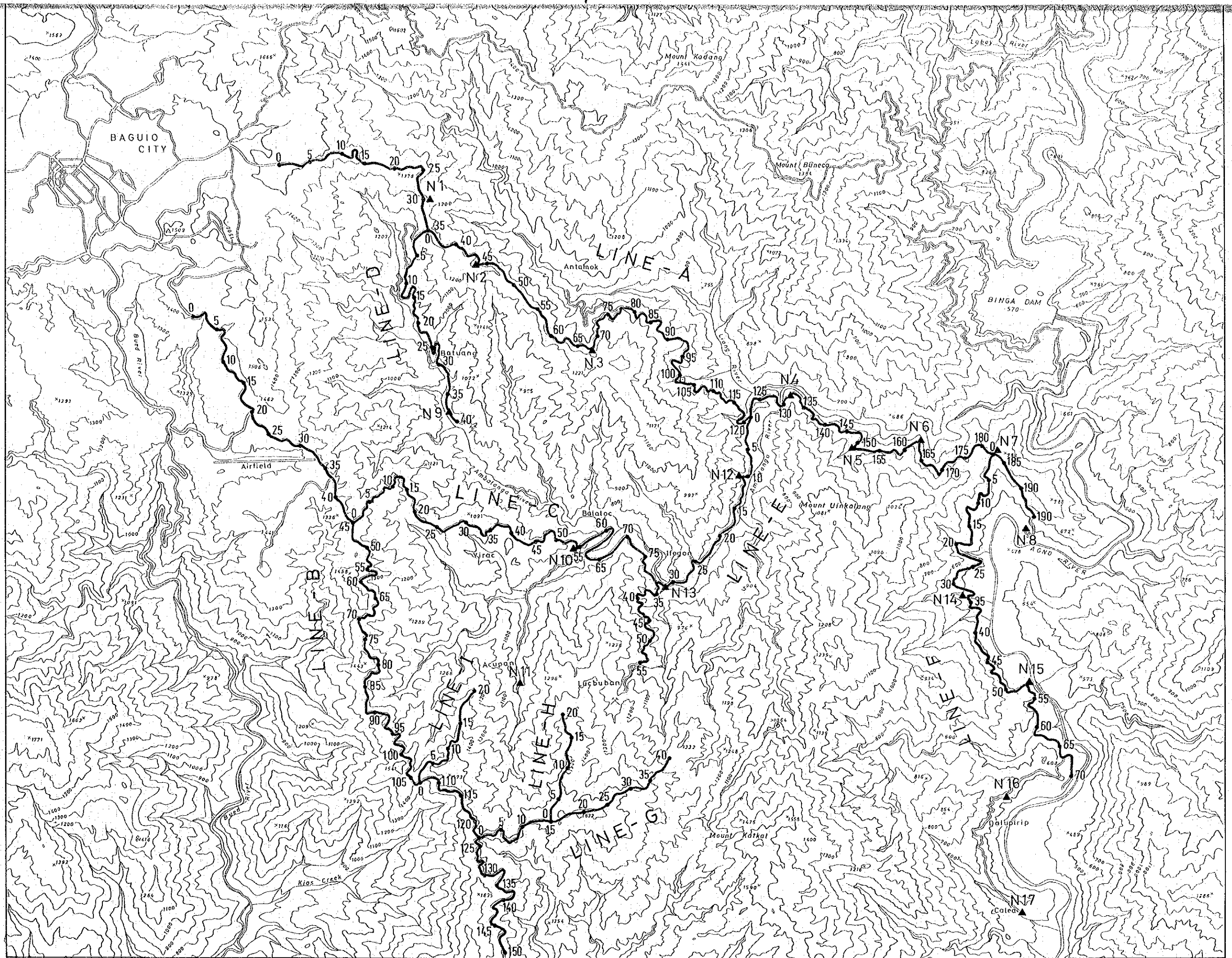
Japan International Cooperation Agency

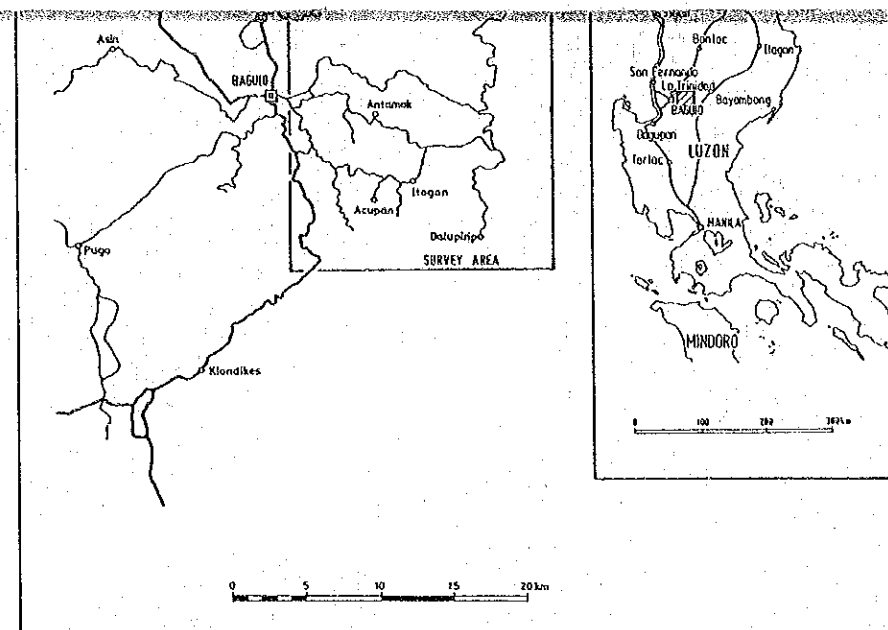
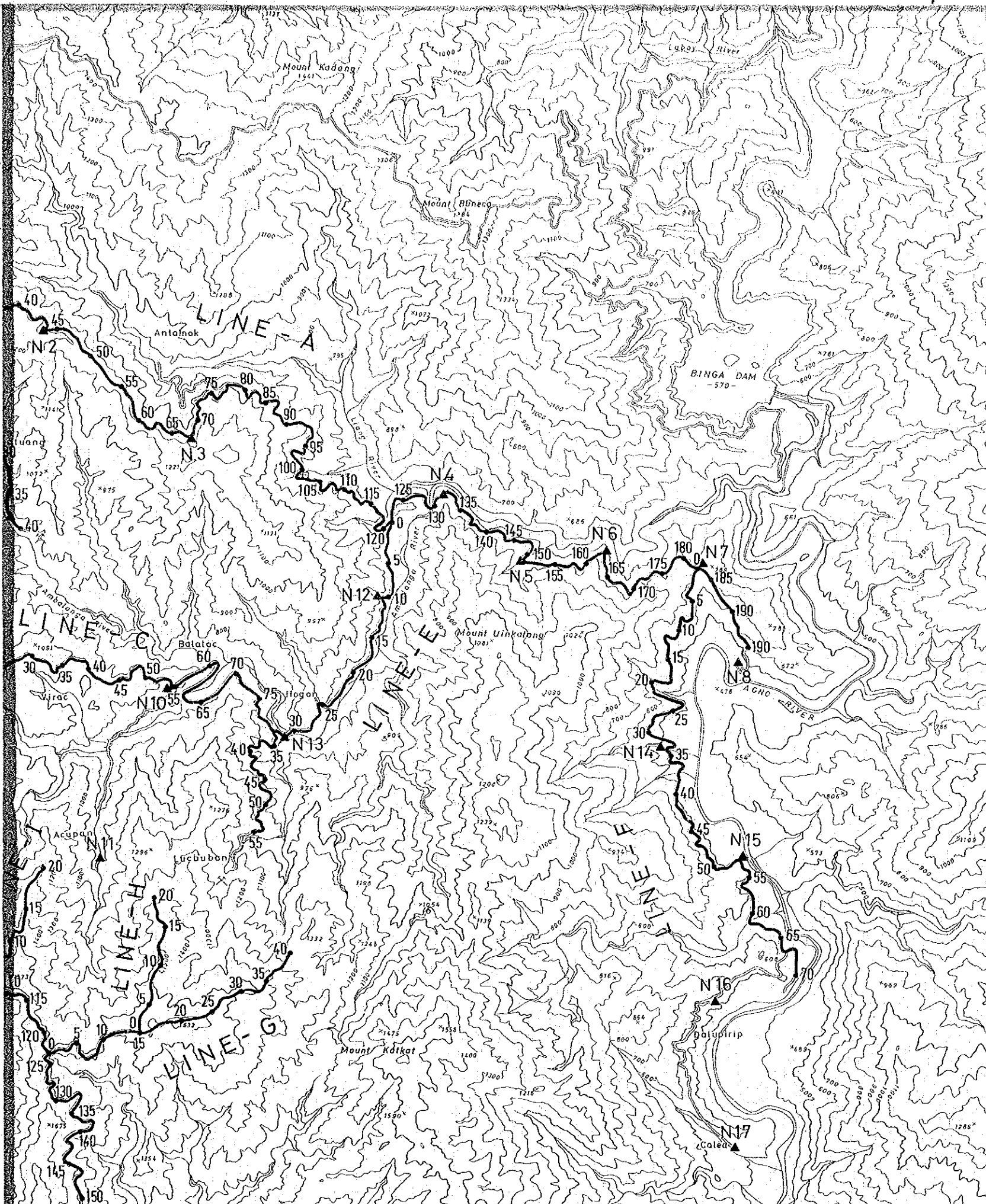
Scale 1:50,000



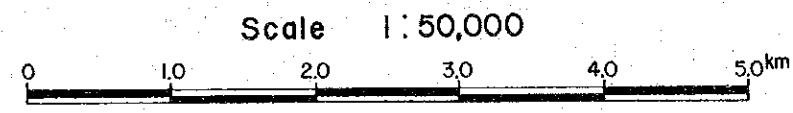
LEGEND

Resistivity Survey Line





Japan International Cooperation Agency



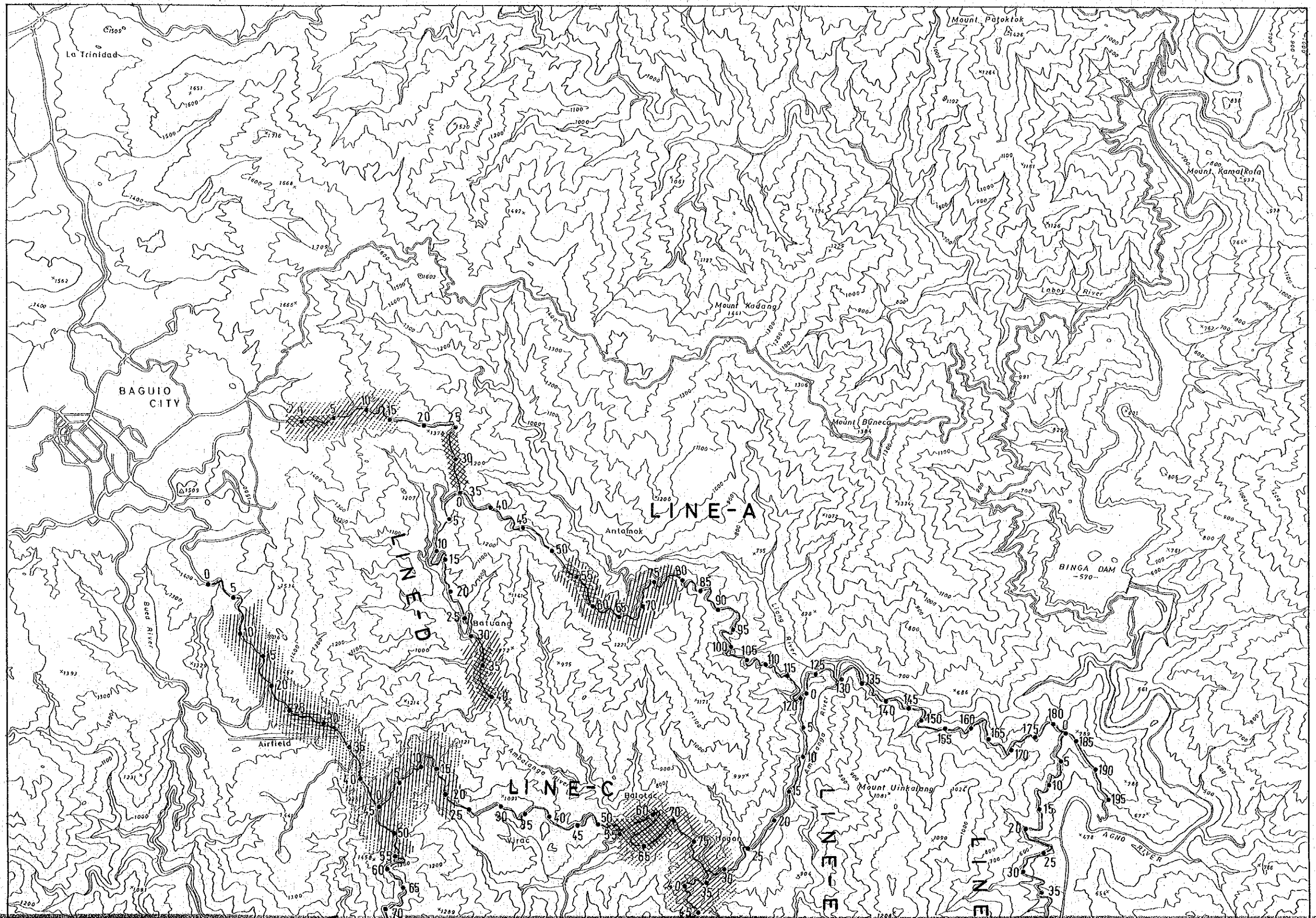
LEGEND

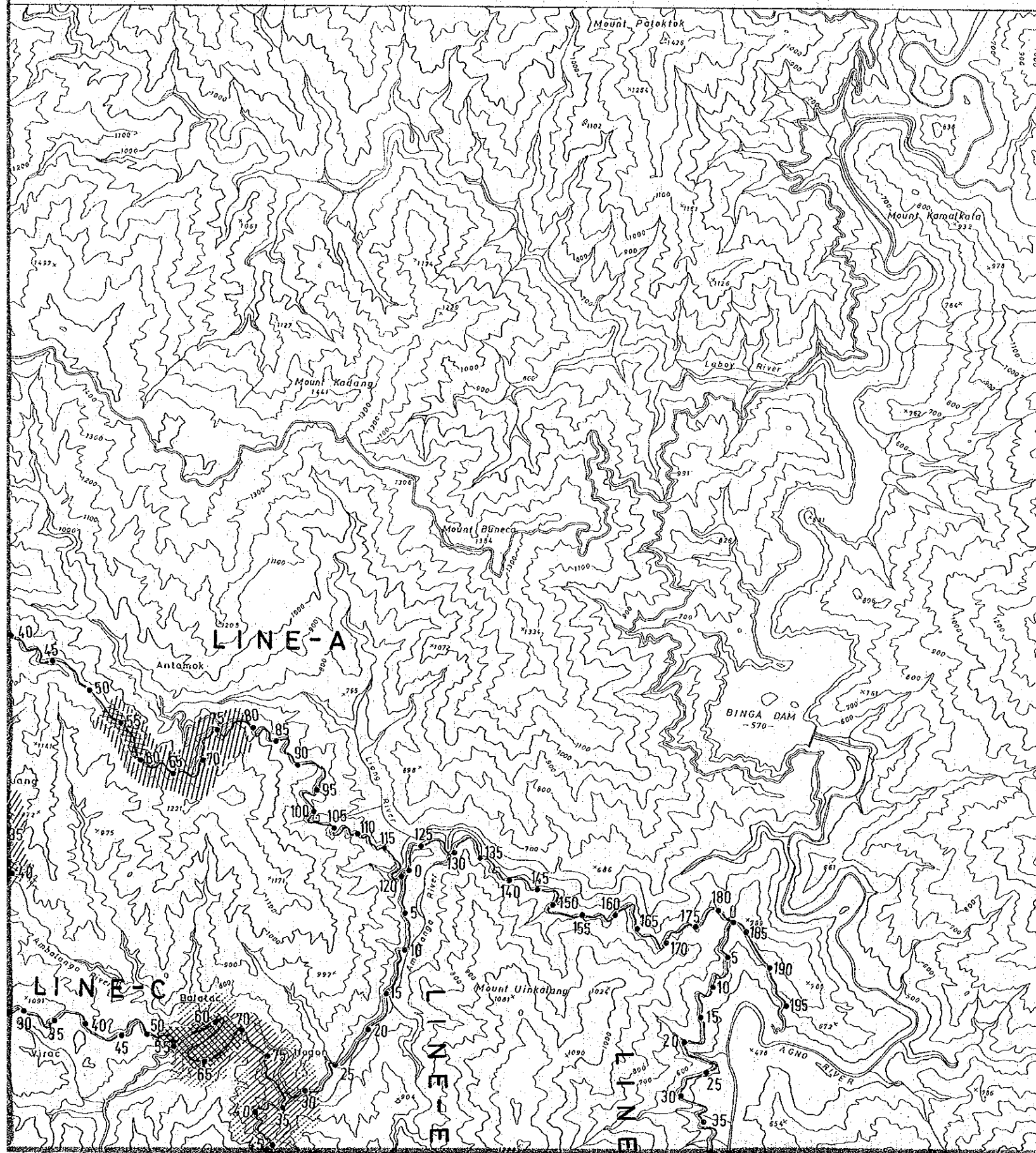
Resistivity Survey Line

Line A 

Noise Monitoring Point

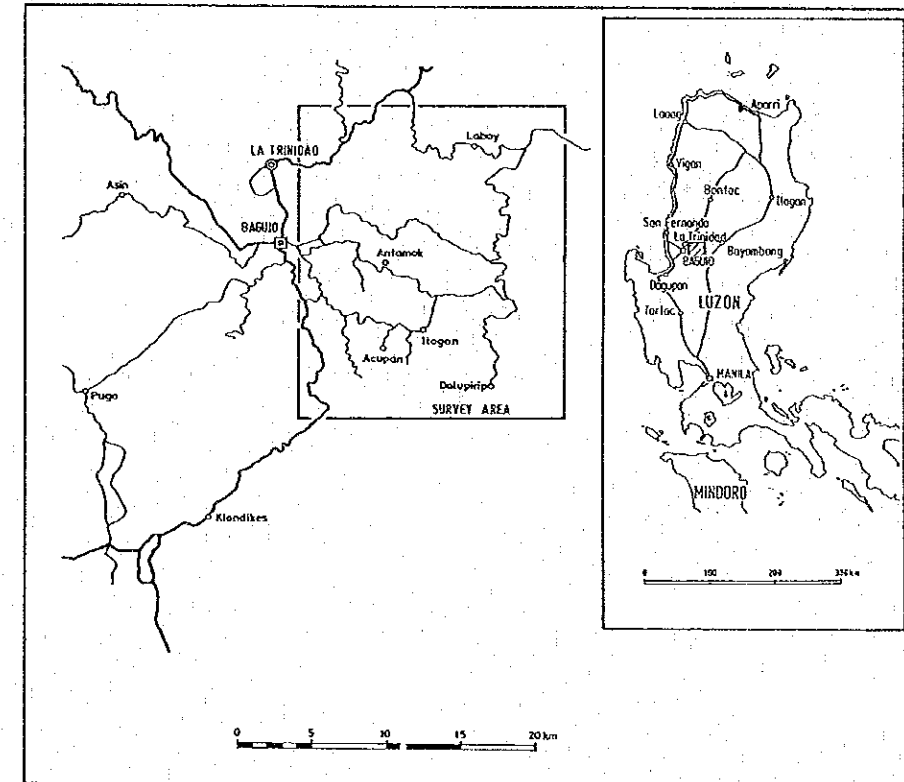
 N9





Acupan Itogon Geothermal Development Survey
the Republic of the Philippines

Fig.II-4-10 Plan Map of Resistivity



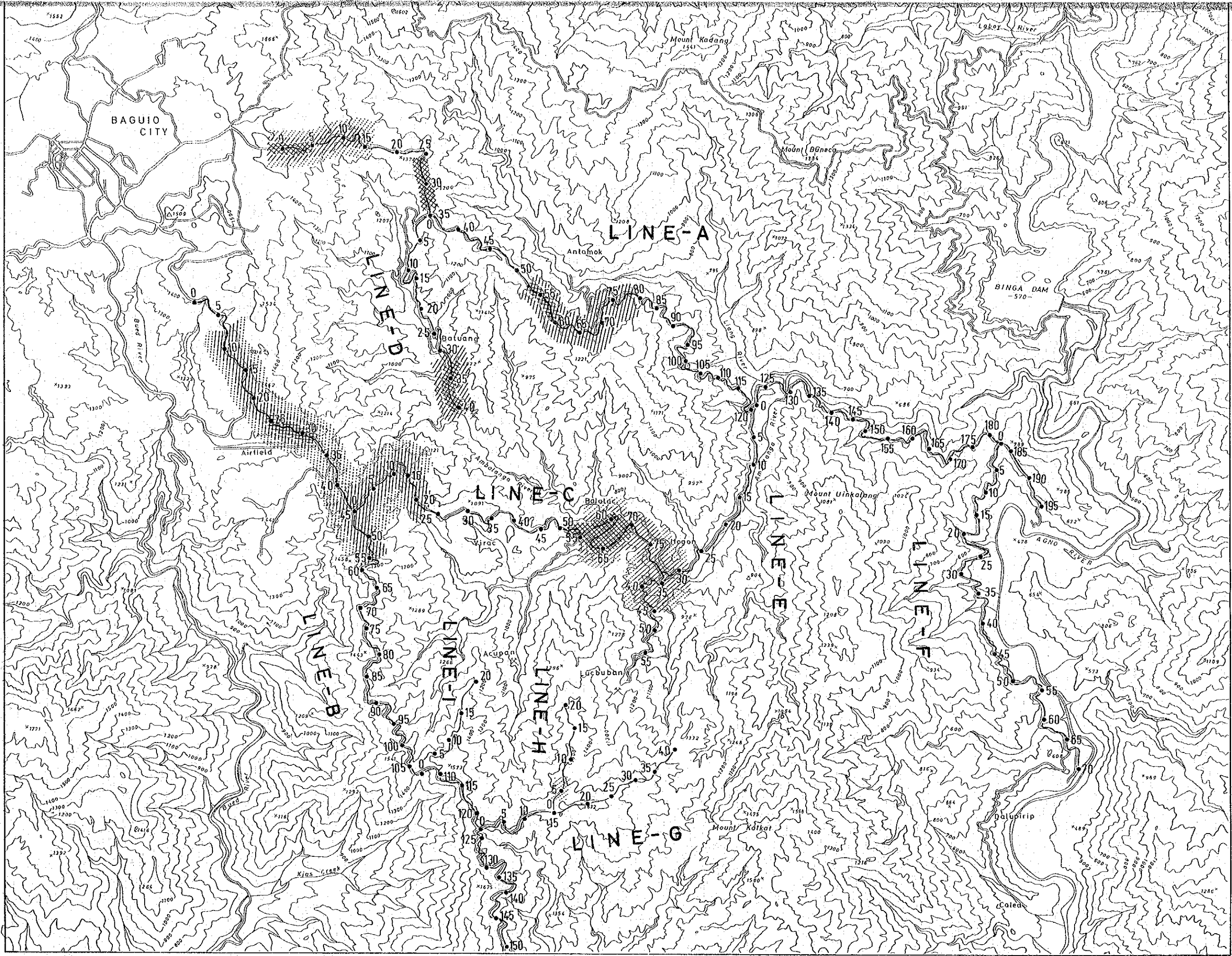
Japan International Cooperation Agency

Scale 1:50,000



LEGEND

Low Resistivity Zone



BAGUIO CITY

LINE-A

LINE-D

LINE-C

LINE-E

LINE-F

LINE-B

LINE-I

LINE-H

LINE-G

Mount Kadang

Mount Uinkang

BINGA DAM

Bued River

AGNO RIVER

Antamok

Balalac

Binalonan

Acupan

Lacubanan

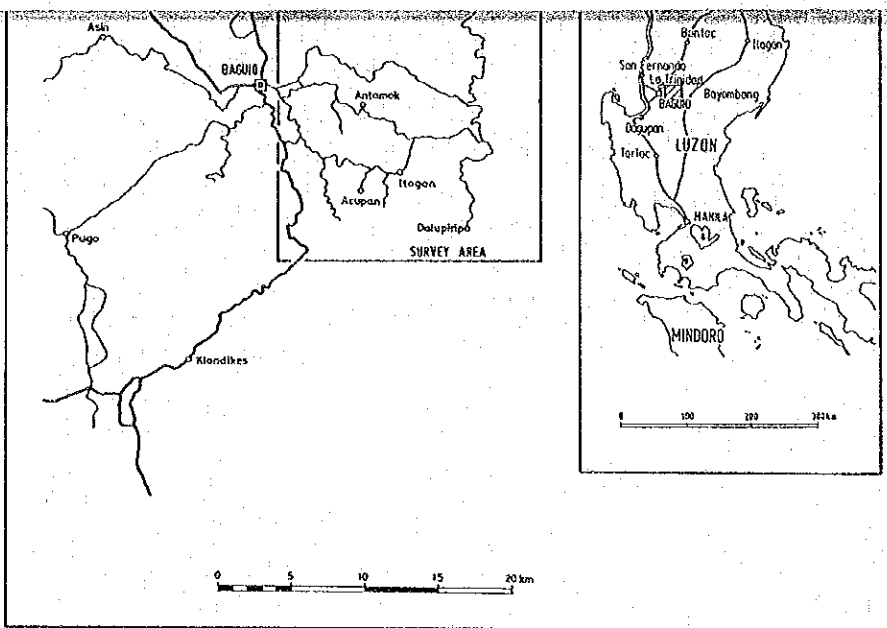
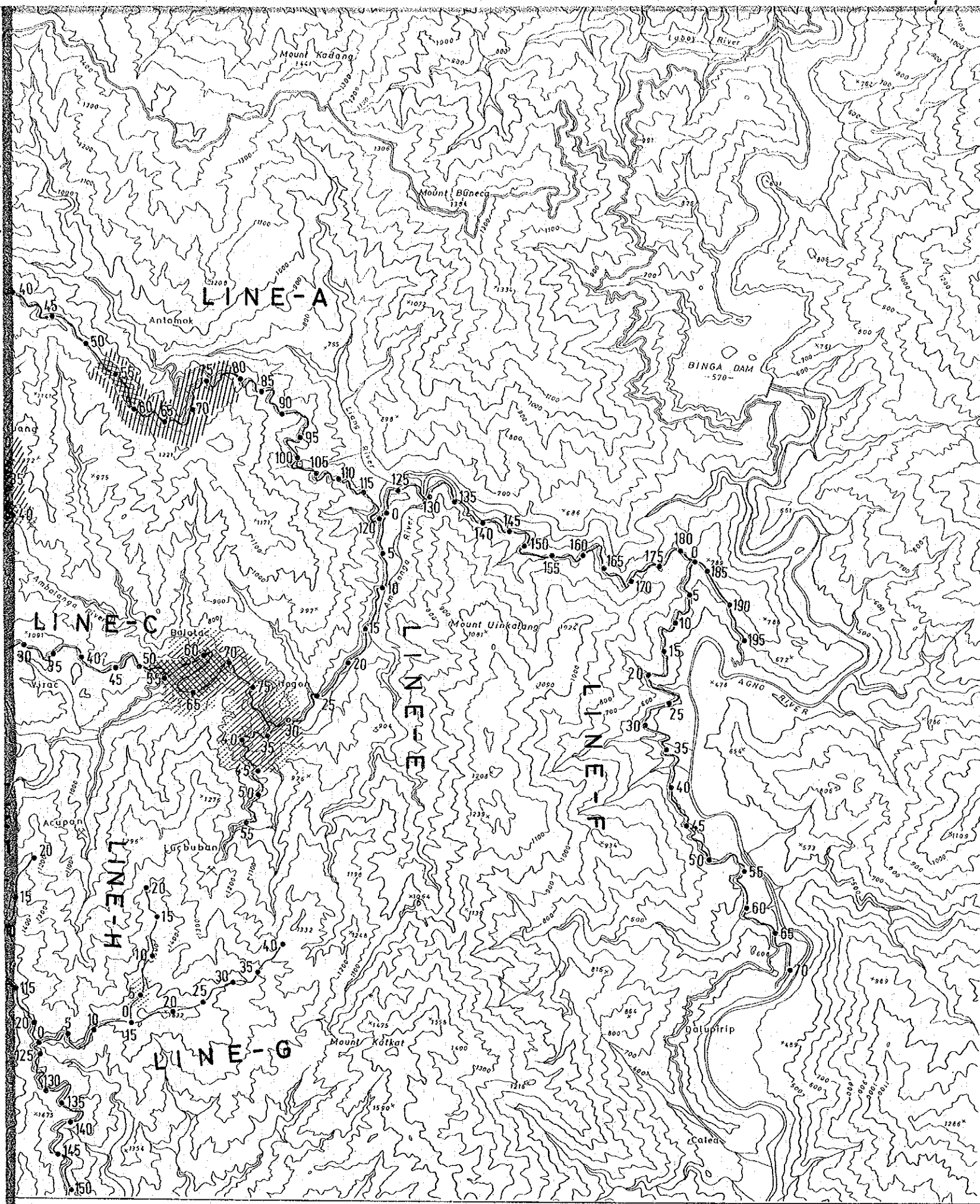
Mount Katkat

Batupirip

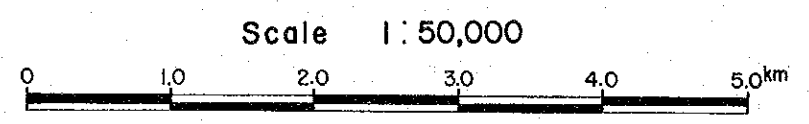
Caled

Airfield

Kias Creek


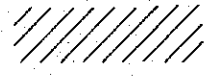
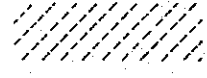


Japan International Cooperation Agency



LEGEND

Low Resistivity Zone

	100m depth (50Ω-m les)
	200m depth (100Ω-m les)
	300m depth (100Ω-m les)

JICA