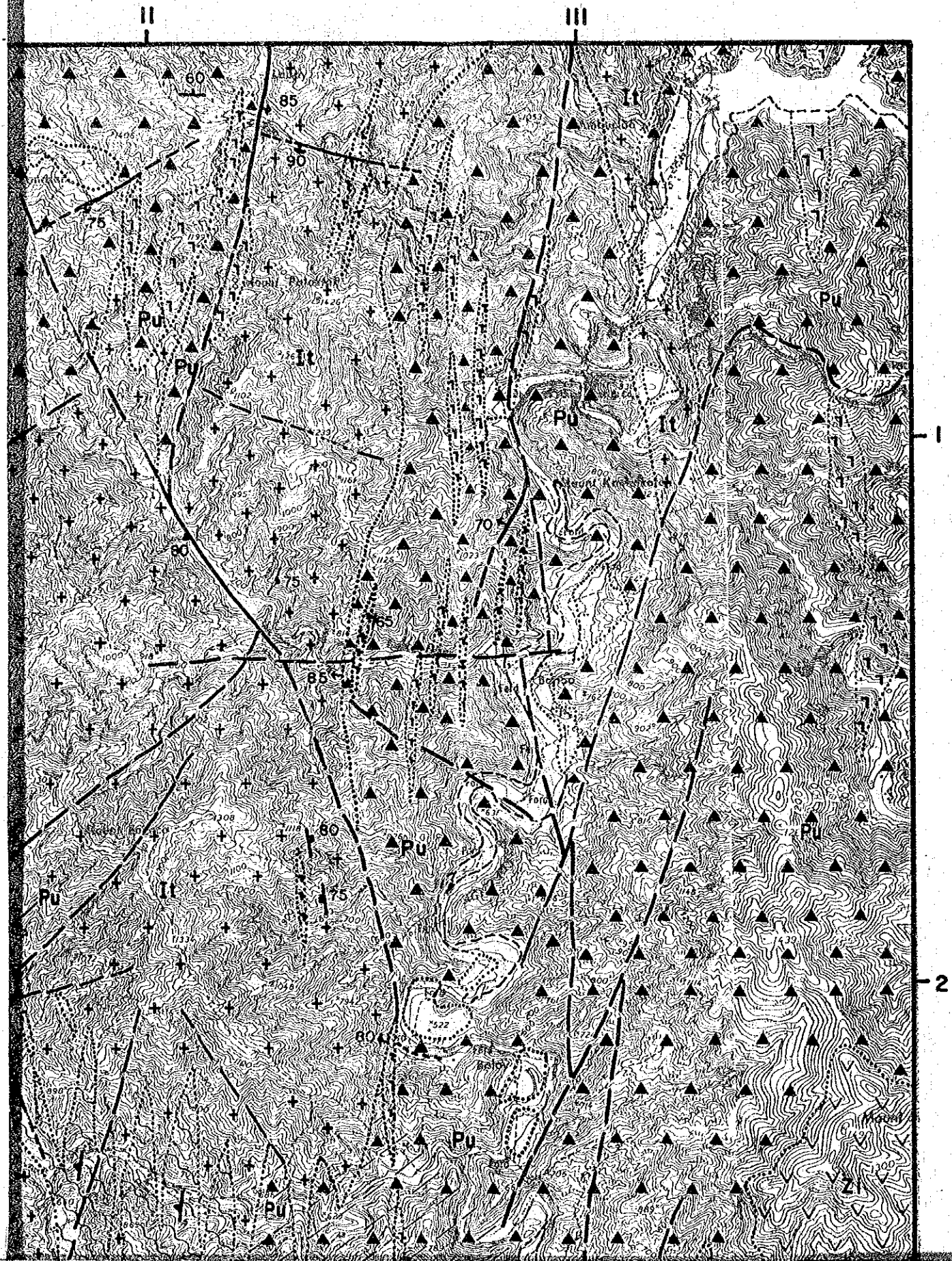
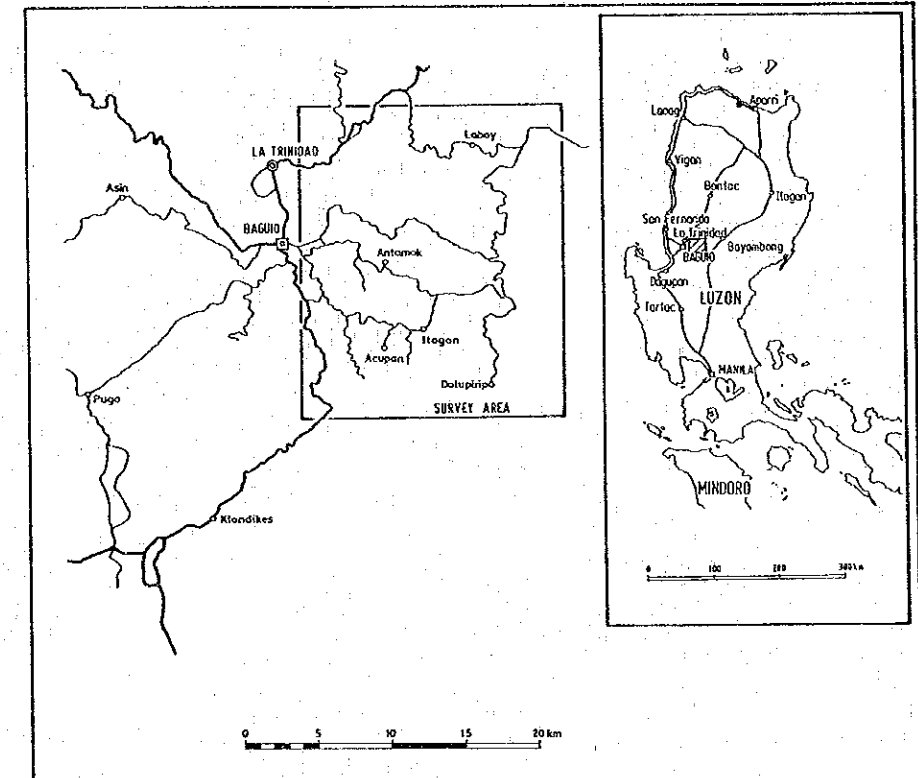


Quaternary
Pleistocene
Pliocene
Upper



Acupan Itogon Geothermal Development Survey
the Republic of the Philippines

Fig. II-1-3 Geological Map



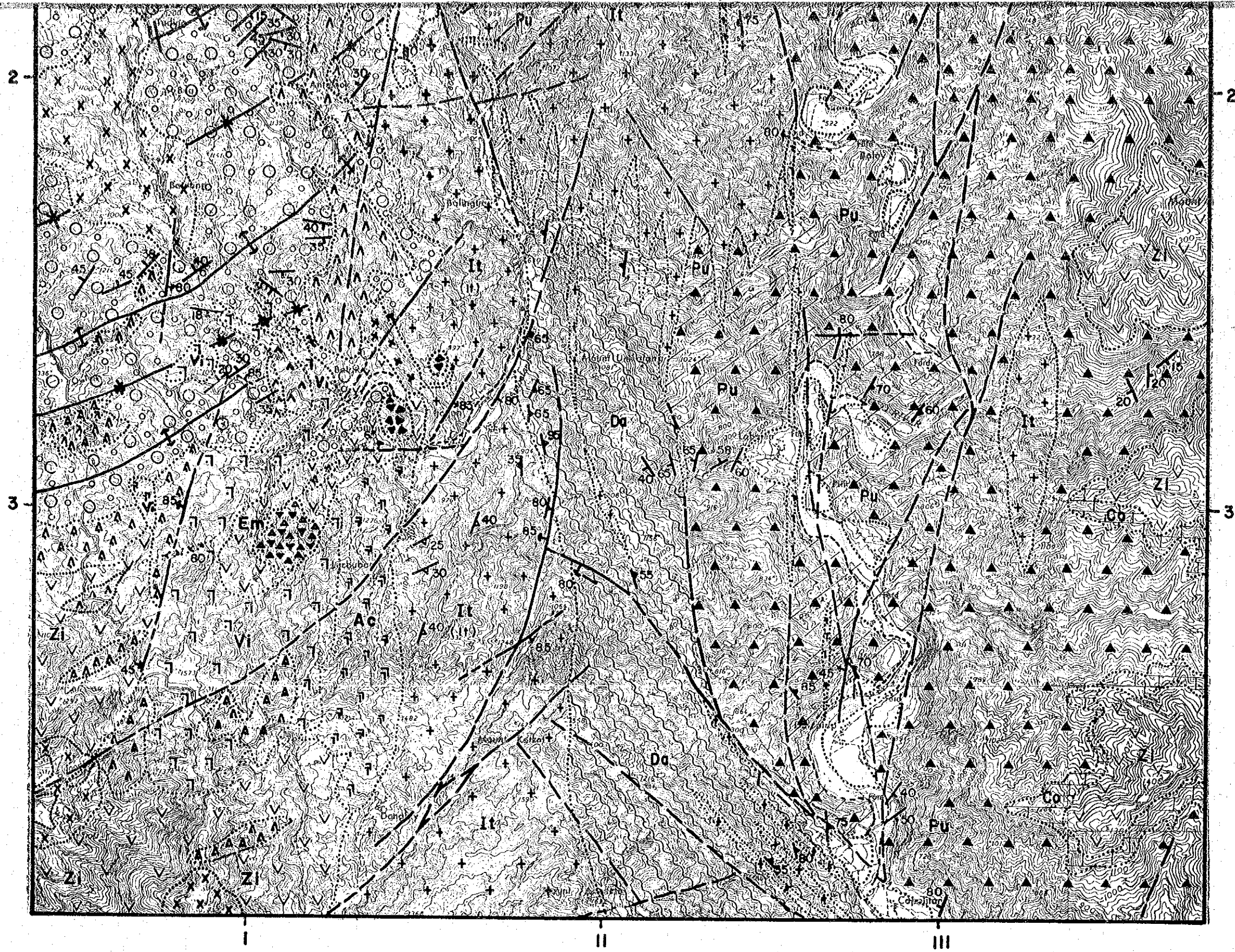
Japan International Cooperation Agency

Scale 1:50,000



LEGEND

Quaternary	Pleistocene	Terrace dep.	gravel
		Balotoc plug	dacitic pyroclastic r. <math><0.85 \pm 0.12 \text{ m.a.}></math>
	Pliocene	Rosario F.	s.s. & pumice lf.



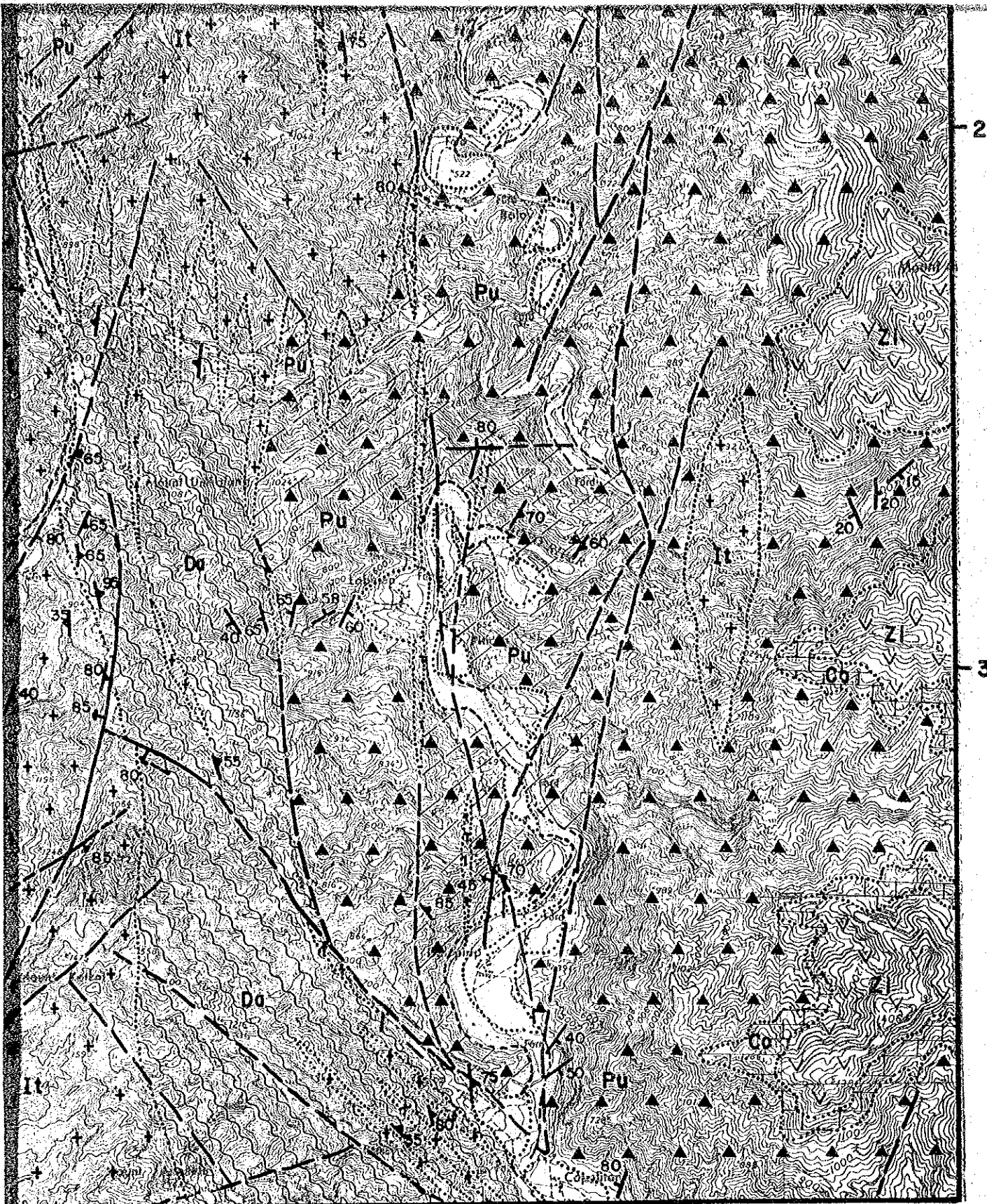
Quaternary	Pleistocene
	Pliocene
Tertiary	Upper Miocene
	Middle Miocene
	Lower Miocene
	Oligocene
	Eocene
	Paleocene
	Upper Cretaceous
	<Intrusive>

Scale 1:50,000

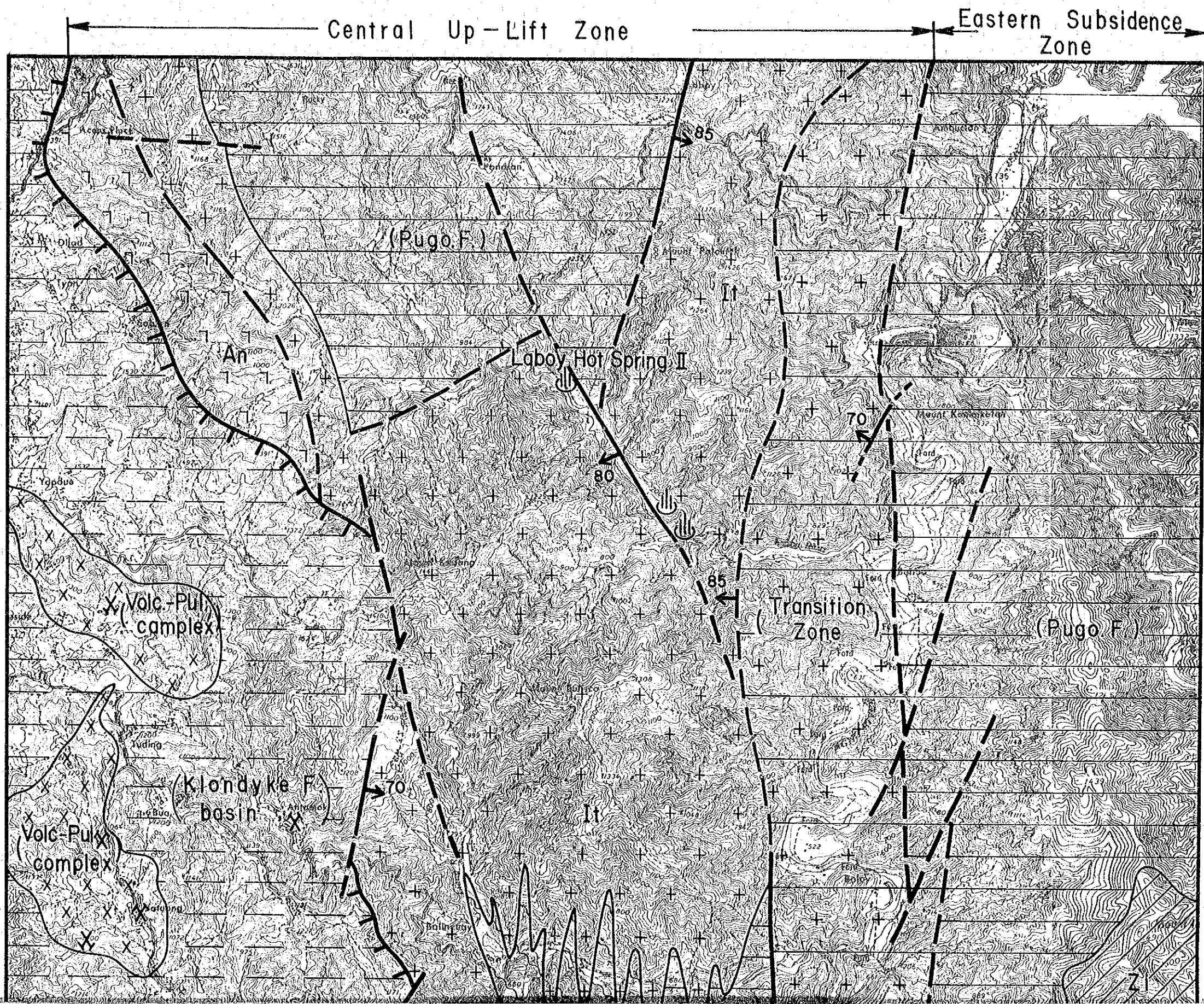


LEGEND

Quaternary	Pleistocene	Terrace dep.		gravel	
		Balotoc plug		dacitic pyroclastic r. <0.85±0.12m.a.>	
Tertiary	Pliocene	Upper	Rosario F.		s.s. & pumice ff.
		Middle	Klondyke F.		conglomerate, pyroclastic r, ff, s.s. & m.s.
	Miocene	Lower	Zigzag F.		andesitic pyroclastic r. and andesite
		Oligocene	Columbus F.		lime stone
	Eocene	Pugo F.		metavolcanic r. & metasedimentary r.	
	Paleocene				
	Up Cretaceous	Dalupirip sch.		sch.	
<Intrusive rocks>					
				hb mega crystal bearing and porphyry <5.76±0.23m.a.>	
				intermediate volc-plutonic complex (and, and. porphyry and micro diorite bearing hb.)	
				px. and porphyry	
				acidic to intermediate volc-plutonic complex (composed of mainly qtz dio. por, a minor amount of dacite porphyry, and qtz diorite, andesite, and porphyry)	
Agno batholith				bio-hb qtz diorite ~ granodiorite (so called virac granodia) (medium grained to fine) <5.20±0.33m.a.>	
				hb diorite, hb gabbroic diorite (cos. grained)	
				melanocratic to leucocratic hb qtz diorite <17.0~22.7m.a.> (cos. grained to medium grained, main body of Agno batholith)	
				transition zone (alternative semisch, and meta-vdcanics and/or meta-sediment)	
				bedding	
				schistosity	
				foliation	
				joint	
				fault	
				lineament	
				operating mine and closed mine	
				hot spring	
				anticline, syncline	



II III



Central Up-Lift Zone

Eastern Subsidence Zone

(Pugo F)

Laboy Hot Spring II

Volc-Pul complex

(Klondyke F) basin

Transition Zone

(Pugo F)

85

80

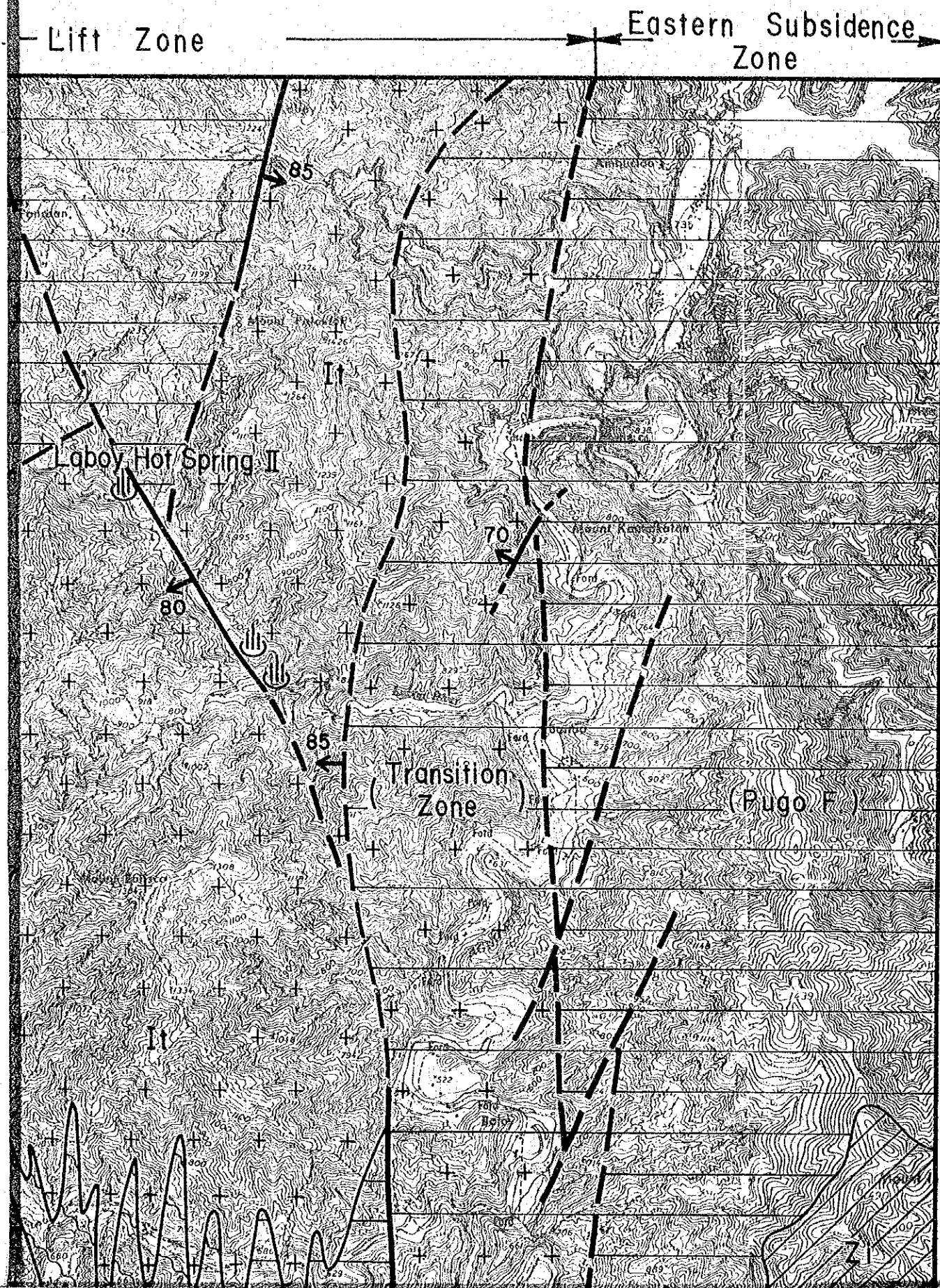
85

70

70

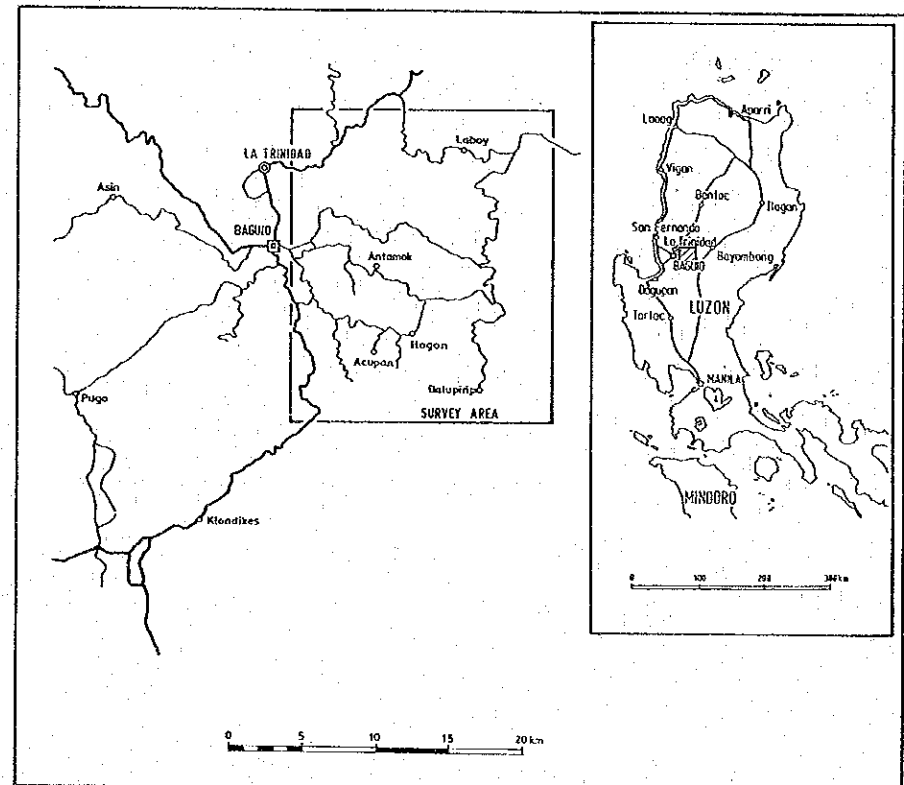
Volc-Pul complex

21

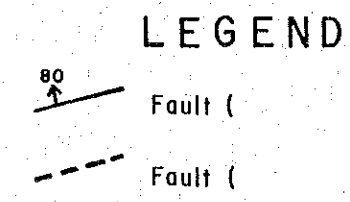
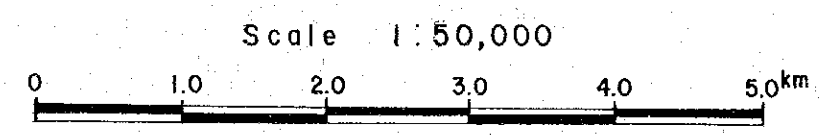


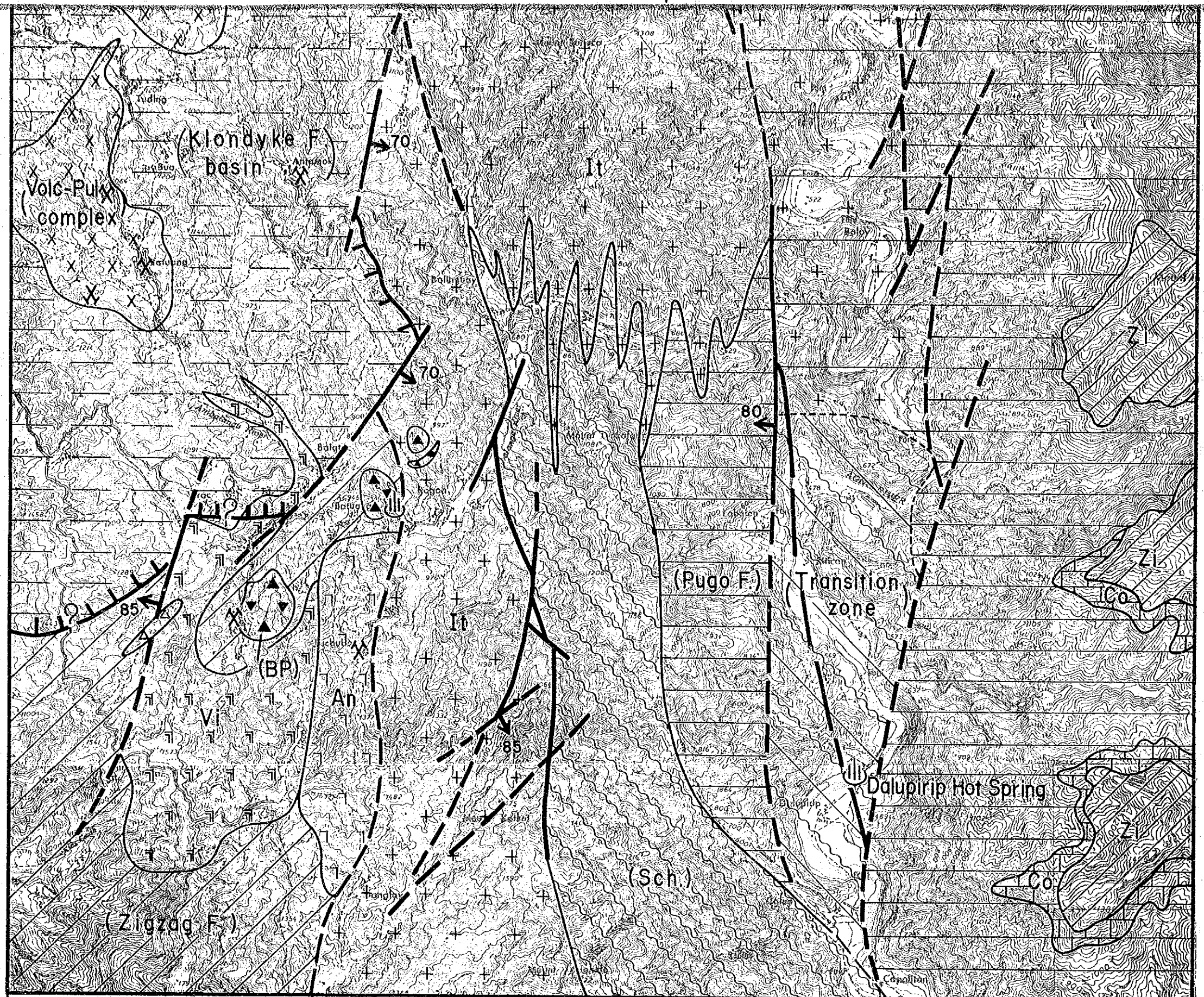
Acupan Itogon Geothermal Development Survey
the Republic of the Philippines

Fig. II-1-8 Tectonic Map



Japan International Cooperation Agency





← Western Subsidence Zone Central Up-Lift Zone Eastern Subsidence Zone →

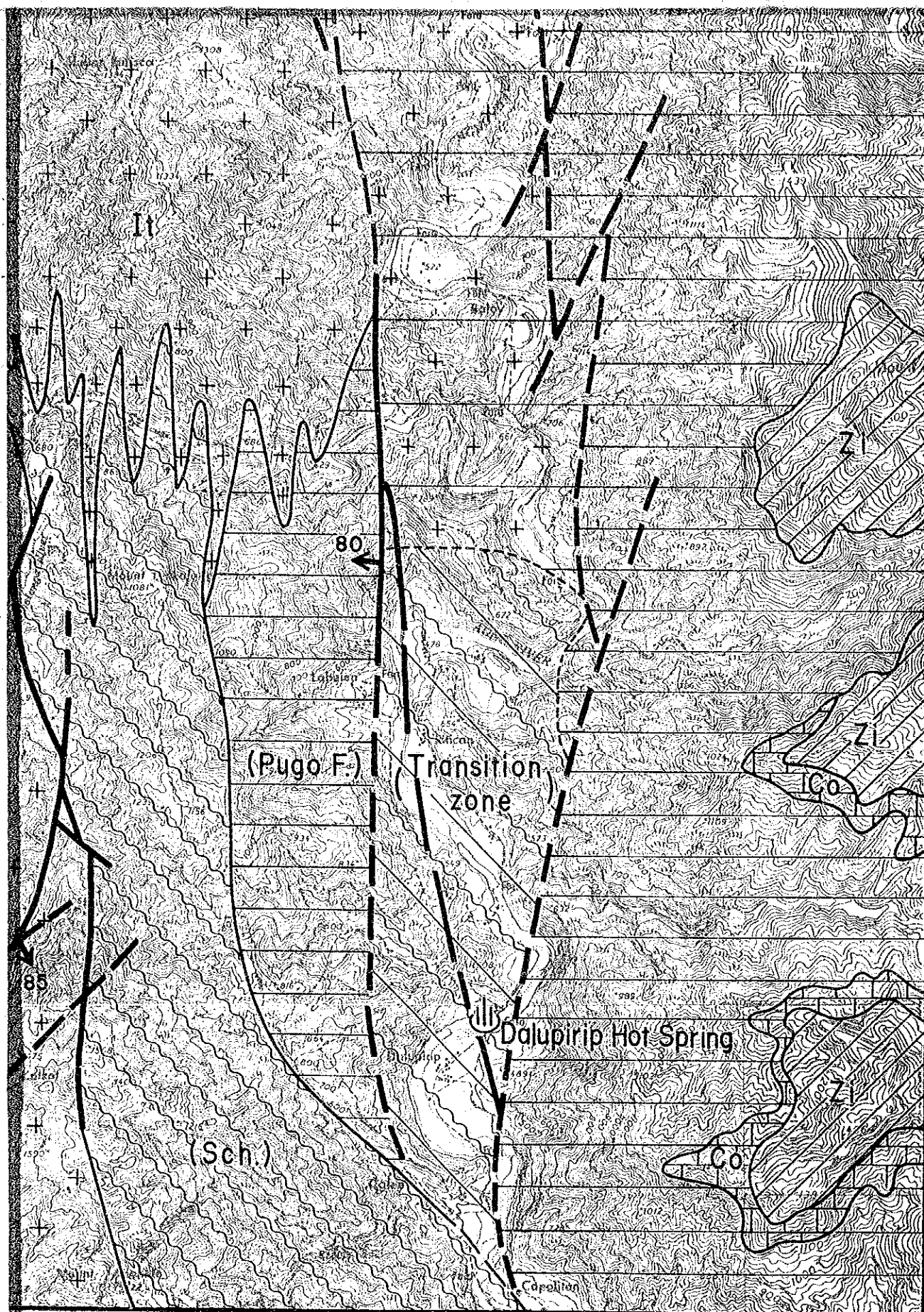
Japan International Cooperation Agency

Scale 1:50,000

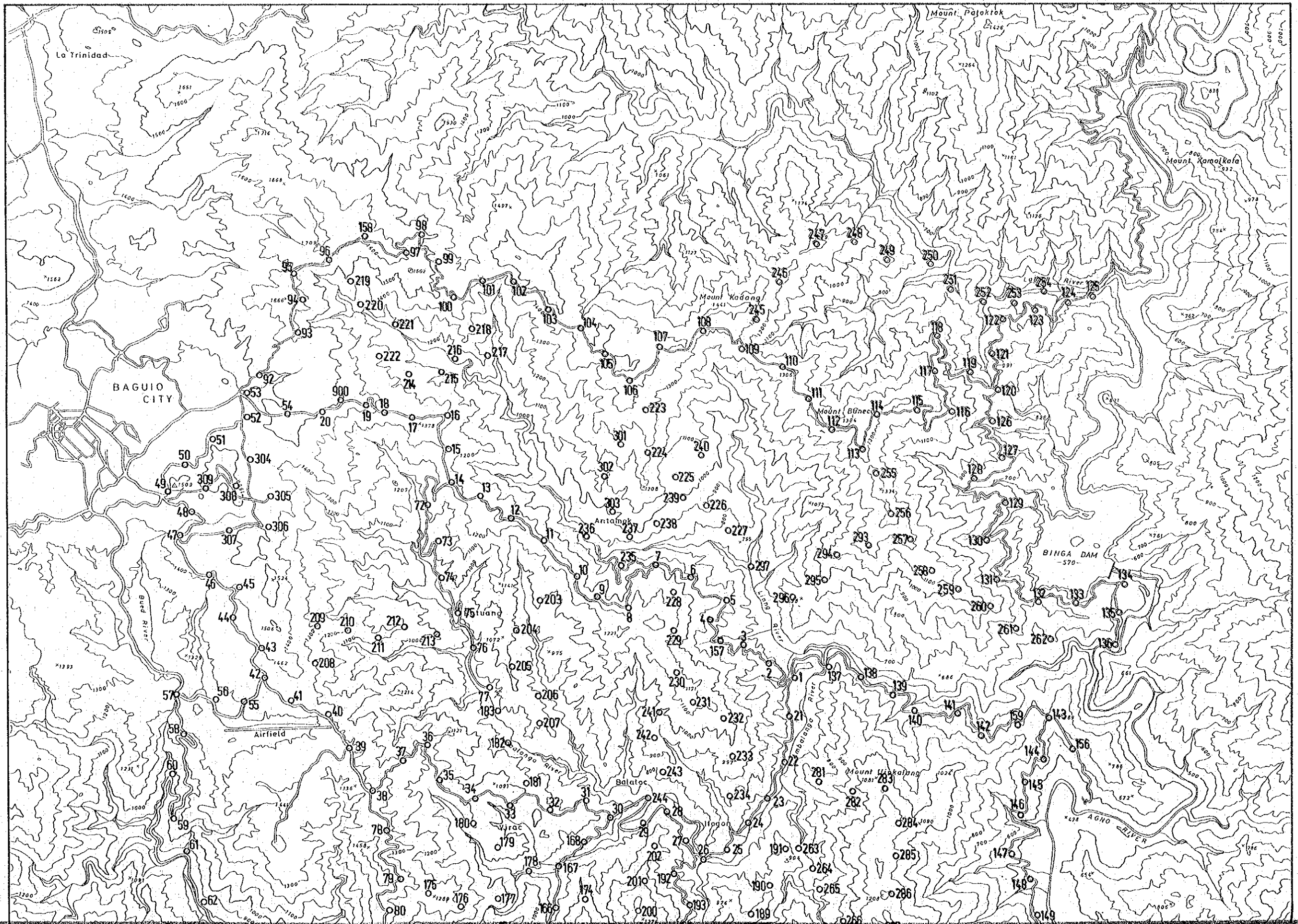


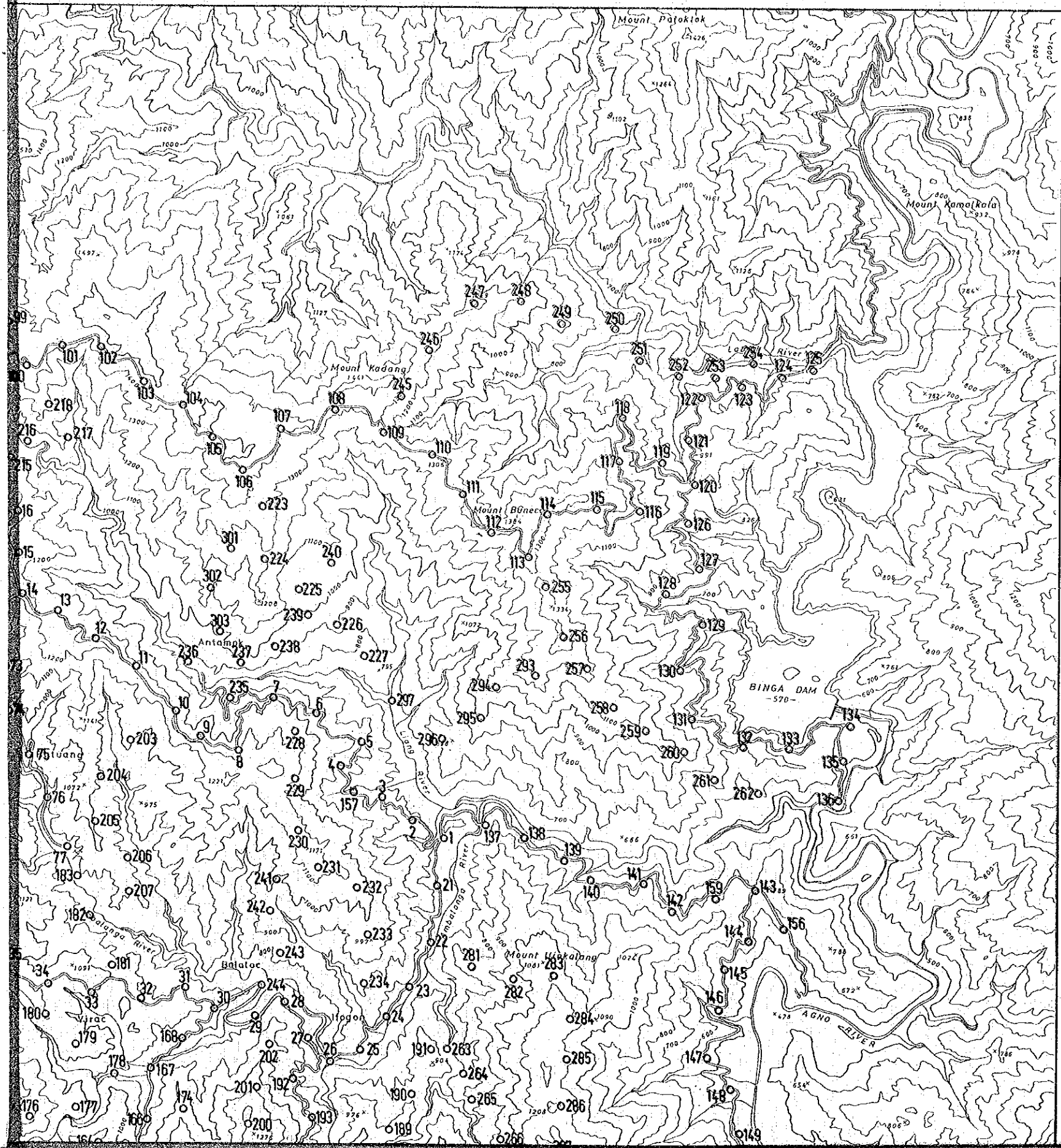
LEGEND

- Fault (
- Fault (
- Unconformable margin of Klondyke F. basin
- Hot spring
- Mine (operating & closed)
- Balatoc pulag (1.0 m.a. ±)
- Klondyke formation
- Zigzag formation
- Columbus formation
- Pugo formation
- Daluprip schist (82 m.a. ±)
- Virac granodiorite (5.2 m.a.)
- Antamoc granodiorite
- Itogon qtz diorite (17.9~21.7 m.a.)
- Transition zone (Pugo f. to Itogon qtz diorite)
- Transition zone (Alternation of semi-schist and non metamorphosed Pugo f.)



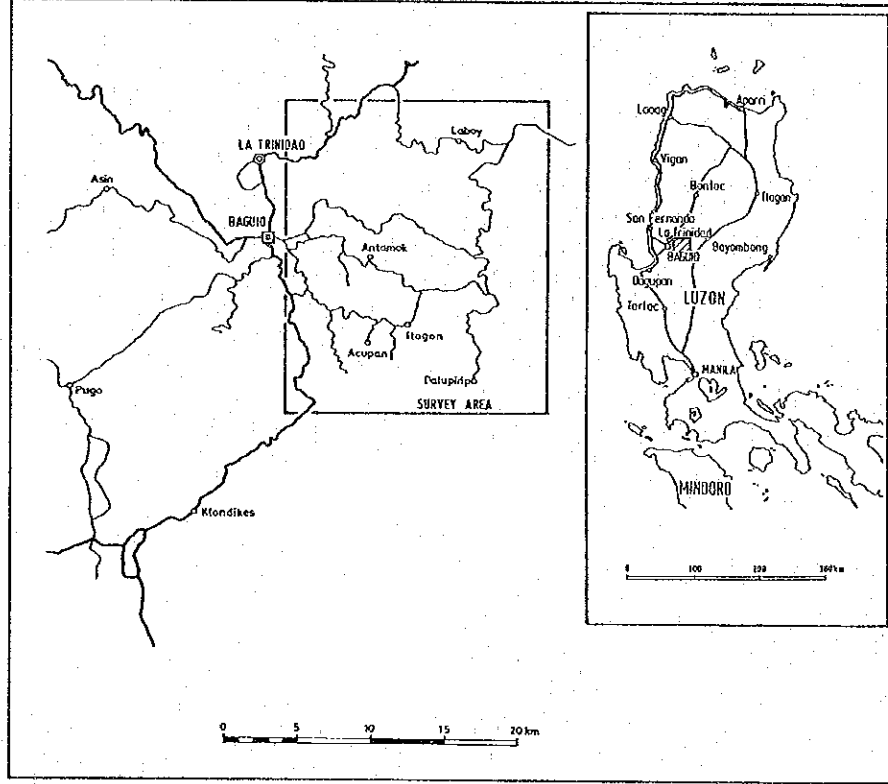
Up - Lift Zone Eastern Subsidence Zone





Acupan Itogon Geothermal Development Survey
the Republic of the Philippines

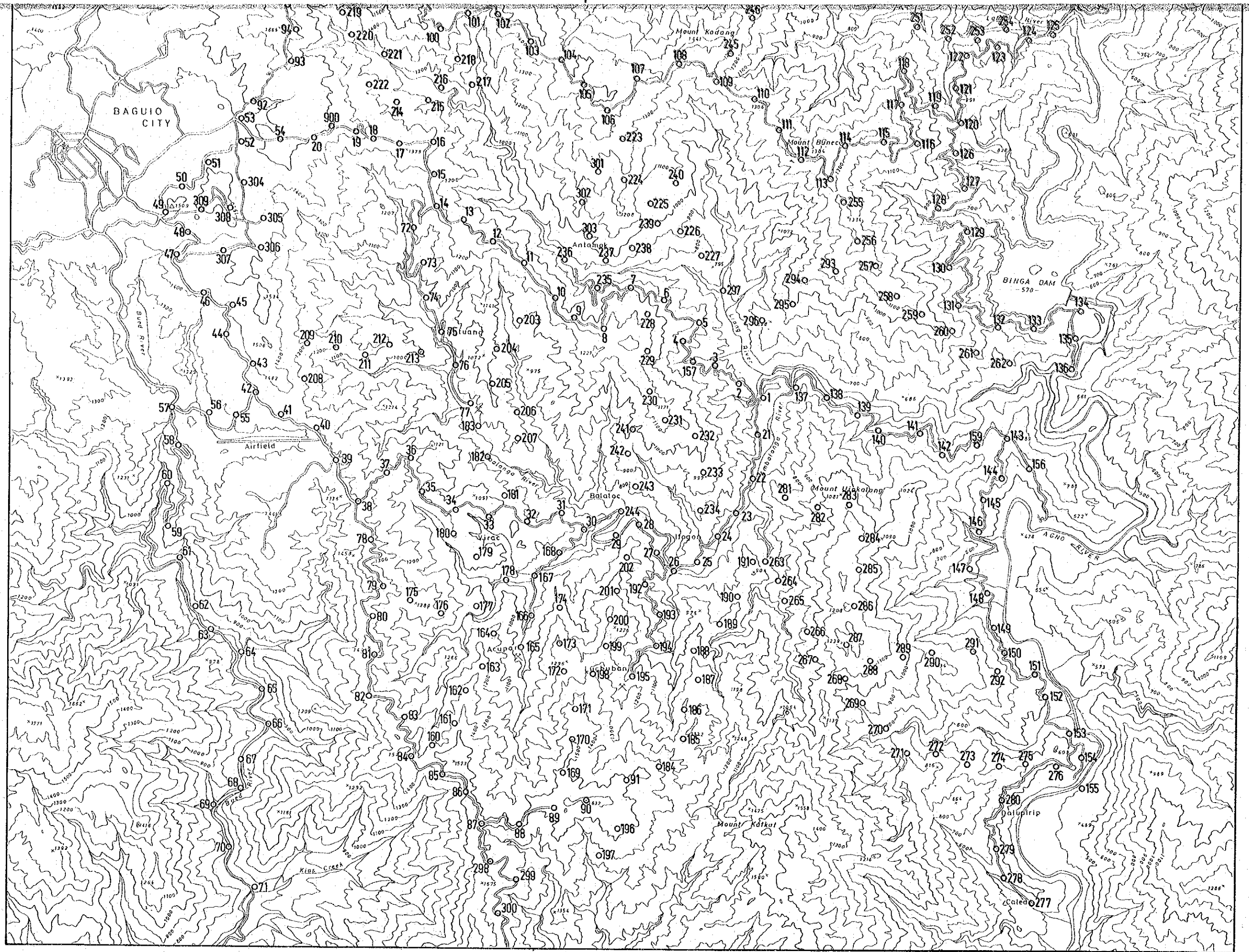
Fig. II-3-1 Location Map of Gravity Station

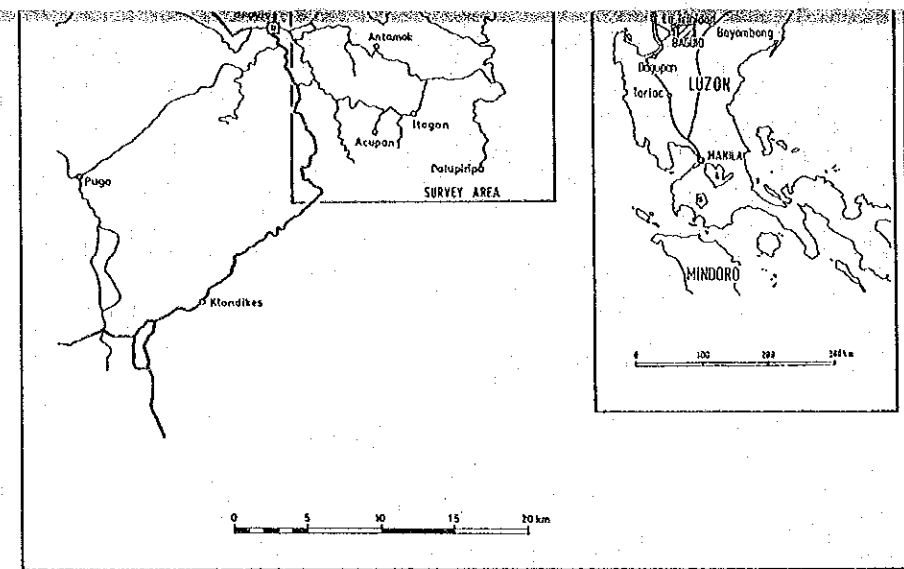
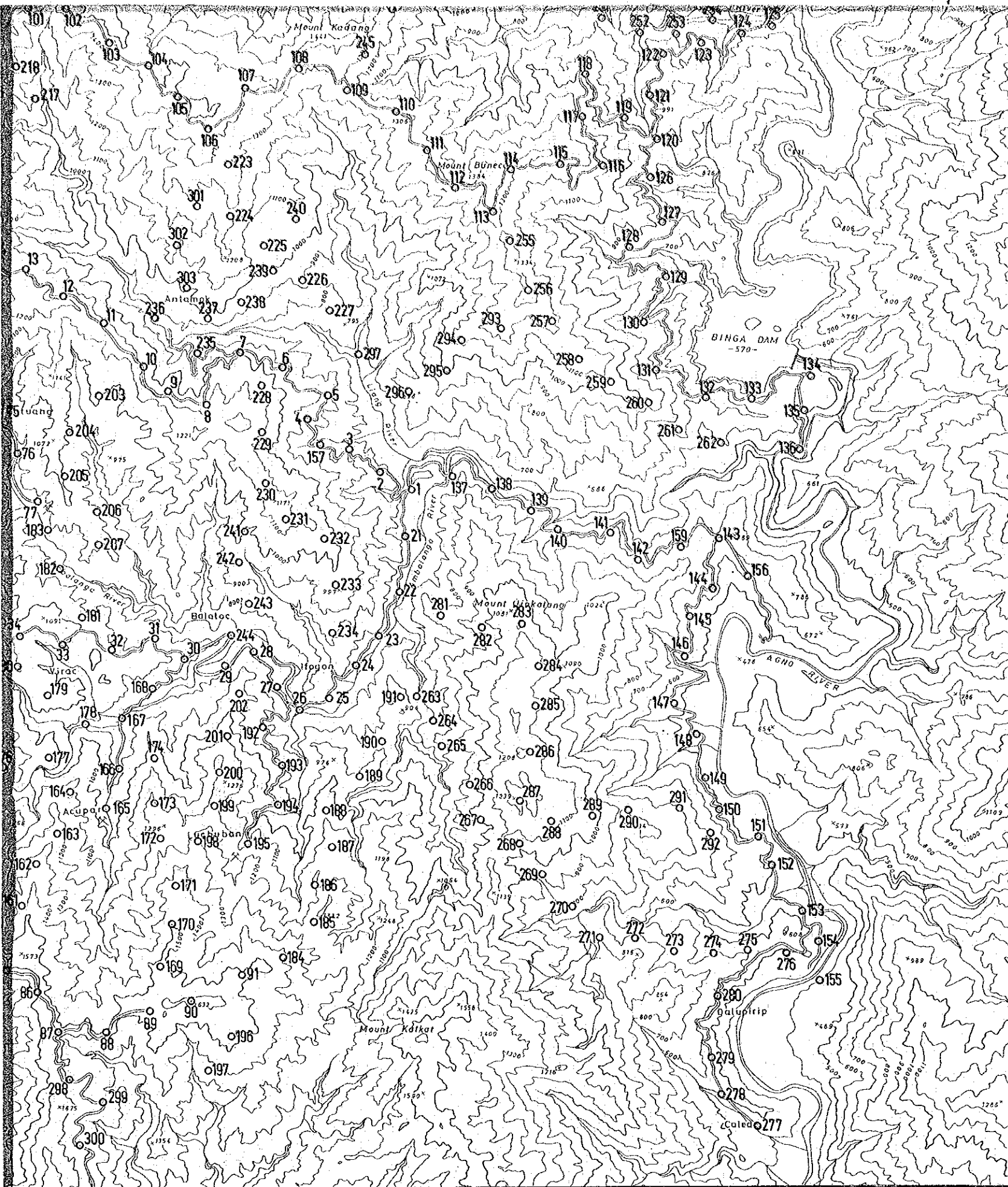


Japan International Cooperation Agency

Scale 1:50,000







Japan International Cooperation Agency

Scale 1:50,000

