

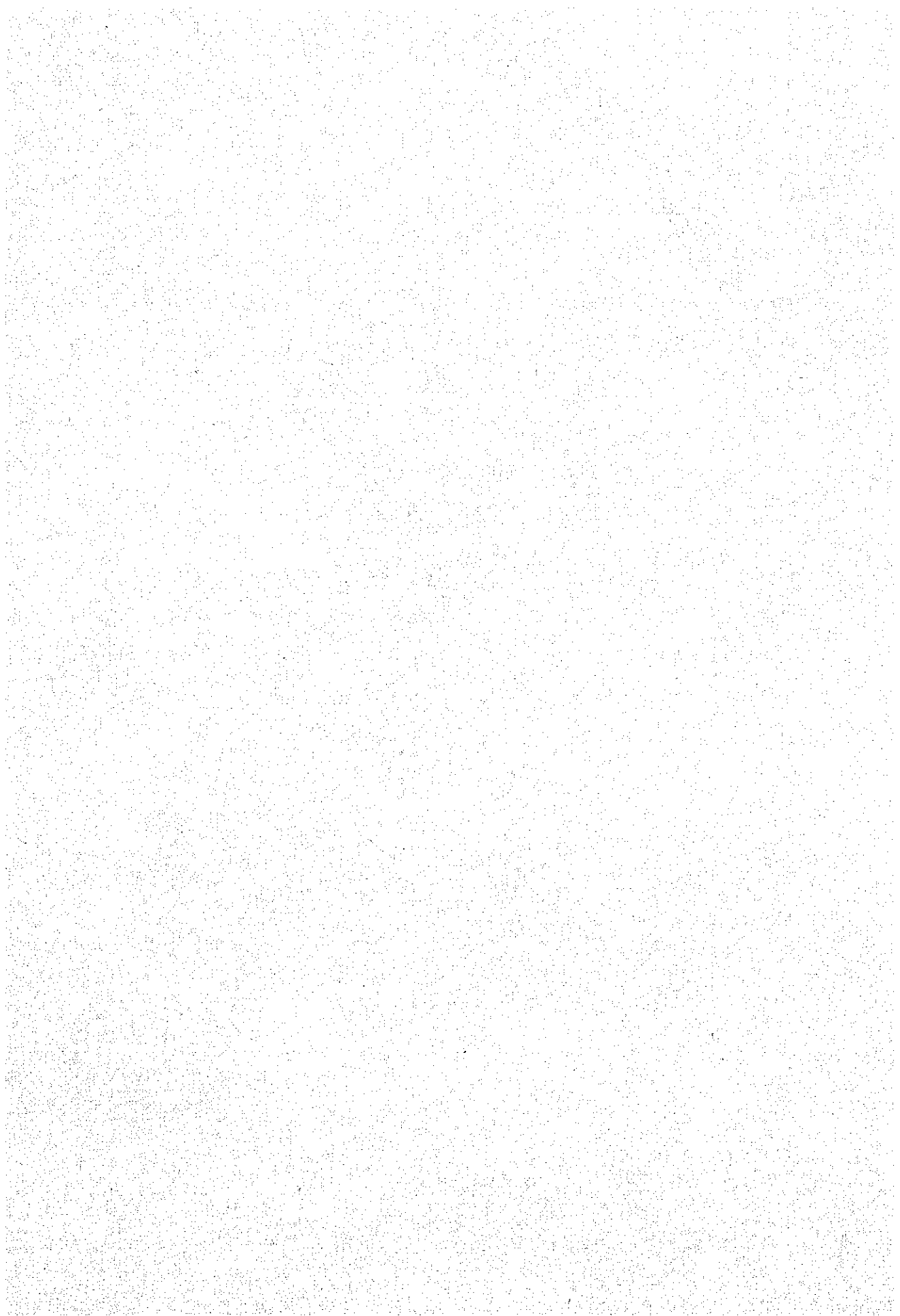
**SURVEY REPORT  
FOR  
REHABILITATION  
OF  
THERMAL POWER PLANTS  
IN METRO MANILA  
IN THE REPUBLIC OF THE PHILIPPINES**

**VOLUME I**

**(MAIN REPORT)**

**NOVEMBER 1982**

**JAPAN INTERNATIONAL COOPERATION AGENCY**



**SURVEY REPORT  
FOR  
REHABILITATION  
OF  
THERMAL POWER PLANTS  
IN METRO MANILA  
IN THE REPUBLIC OF THE PHILIPPINES**

**VOLUME I**

**(MAIN REPORT)**

JICA LIBRARY



1030441[8]

**NOVEMBER 1982**

**JAPAN INTERNATIONAL COOPERATION AGENCY**

118  
64.3  
MPN  
14028

国際協力事業団	
受入 月日 84.9.27	118/0
登録No. 09779	64.3
	MPN

## PREFACE

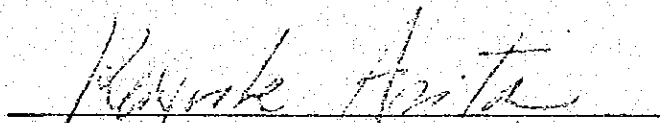
In response to the request of the Government of the Republic of the Philippines, the Government of Japan decided to conduct a survey on the rehabilitation project of thermal power plants in Metro Manila and entrusted the survey to the Japan International Cooperation Agency (JICA). The JICA sent to the Philippines a survey team headed by Mr. K. Iimura from 26 July to 30 September, 1982.

The team had discussions on the project with the officials concerned of the Government of the Philippines and conducted a field survey in Metro Manila area. After the team returned to Japan, further studies were made and the present report has been prepared.

I hope that this report will serve for developing a stable power supply in Metro Manila and contribute to the promotion of friendly relations between our two countries.

I wish to express my deep appreciation to the officials concerned of the Government of the Republic of the Philippines for their close cooperation extended to the team.

Tokyo, November, 1982



Keisuke Arita

President

Japan International Cooperation Agency

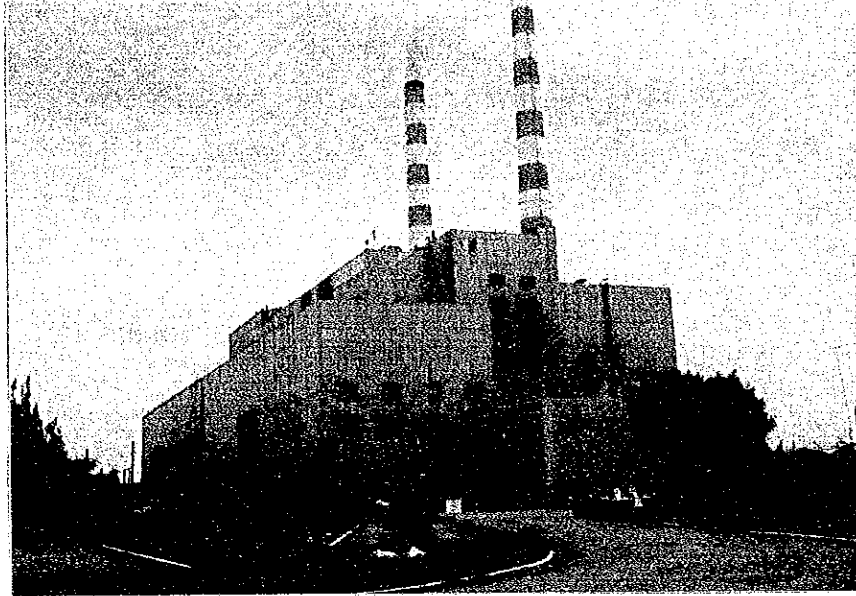
[The page contains extremely faint and illegible text, likely due to low contrast or scanning quality. The text is organized into several paragraphs, but the individual words and sentences are not discernible.]

**PHOTOGRAPHS**

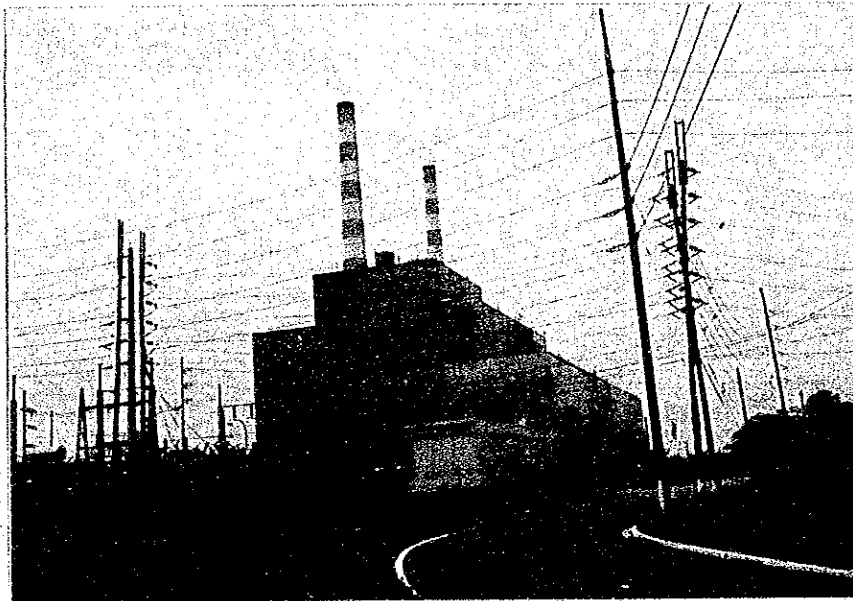
[The page contains extremely faint and illegible text, likely due to low contrast or scanning quality. No specific content can be transcribed.]



PH-1



PERSPECTIVE OF GARDNER/SNYDER T.P. - SOUTH SIDE  
ELEVATION



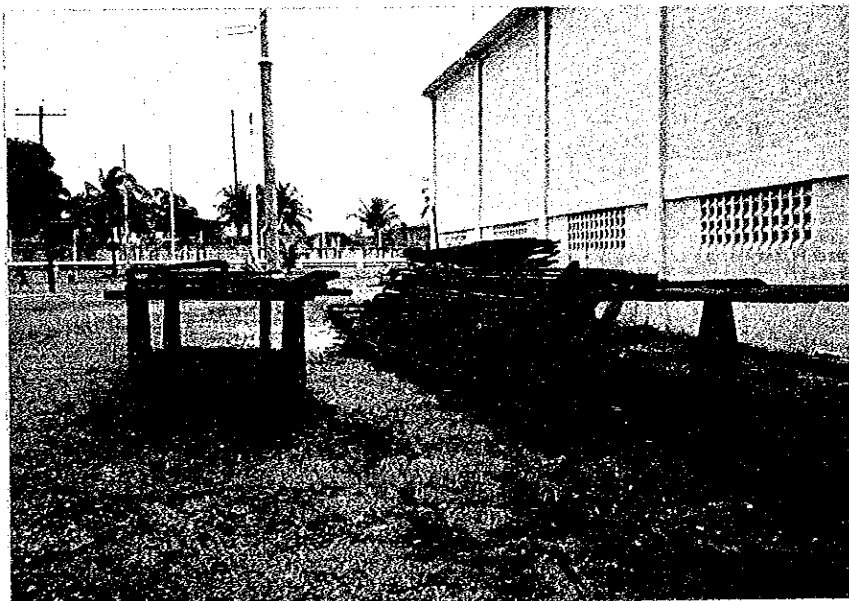
PERSPECTIVE OF GSTP - NORTH SIDE ELEVATION



PH-2



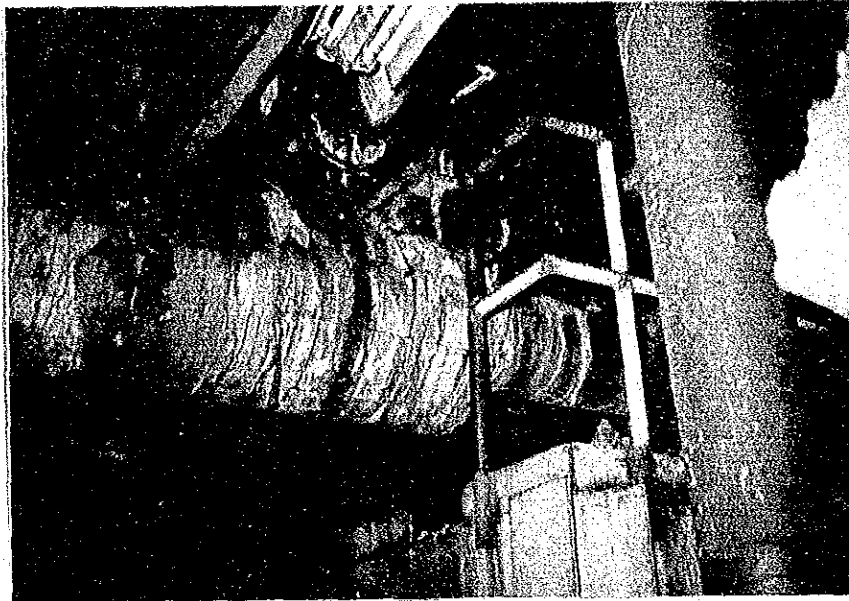
G-2 SECONDARY SUPERHEATER TUBES  
REMOVED DURING RECENT OVERHAULING



G-2 REMOVED SECONDARY SUPERHEATER TUBE



PH-3



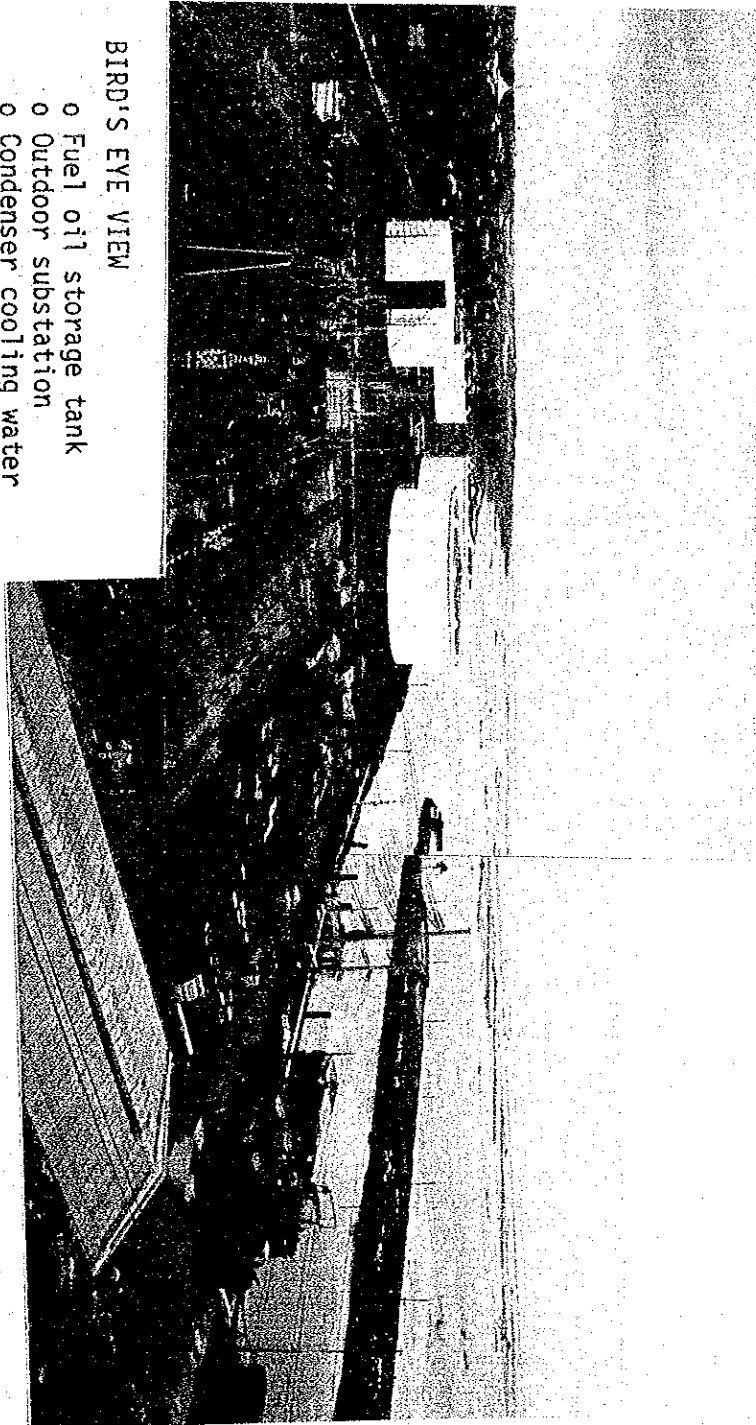
SITUATION OF PIPING  
INSULATION (note  
safety valve already  
at bent position)

BY-PASS CV 101 A &  
B OF MAIN STEAM  
PIPE



BIRD'S EYE VIEW

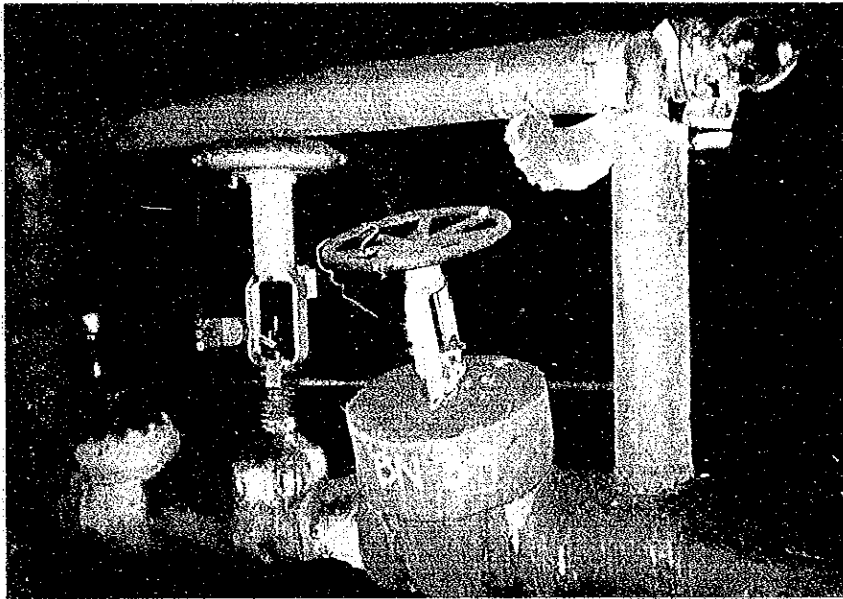
- o Fuel oil storage tank
- o Outdoor substation
- o Condenser cooling water discharge channel
- o Fuel oil loading and unloading facility



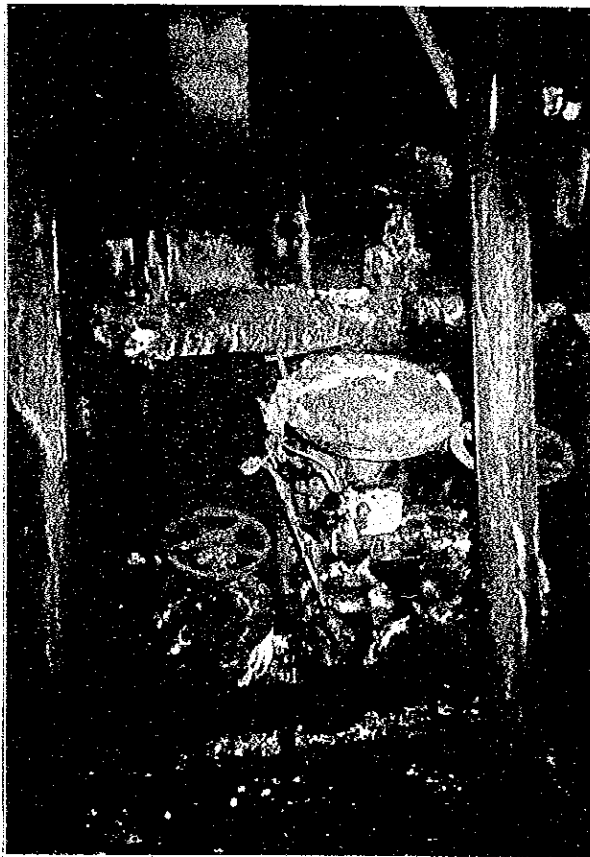




PH-5



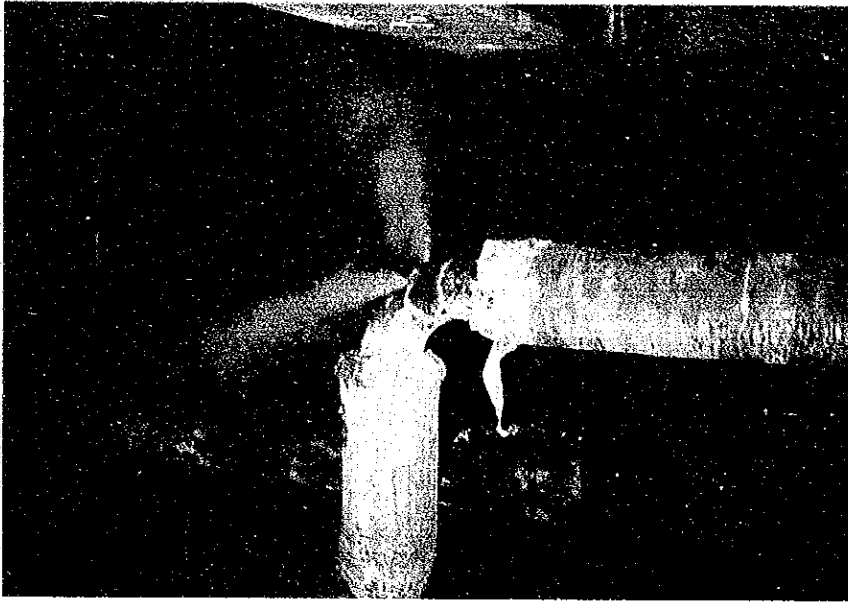
NON-OPERATIONAL AUXILIARY STEAM CONTROL VALVE



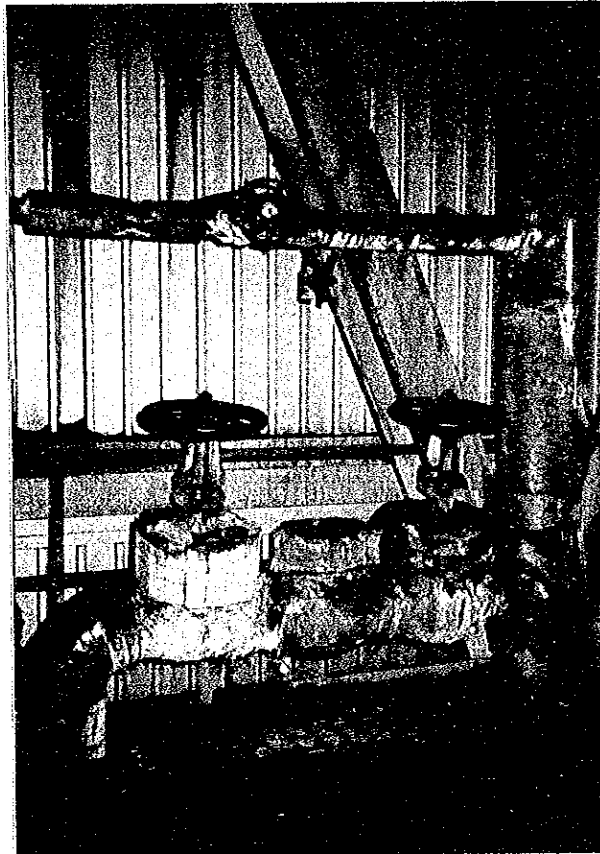
NON-OPERATIONAL AUXILIARY STEAM CONTROL VALVE



PH- 6



RUPTURED PORTION  
OF S-2 HPH DRAIN  
PIPE  
(during opera-  
tion)

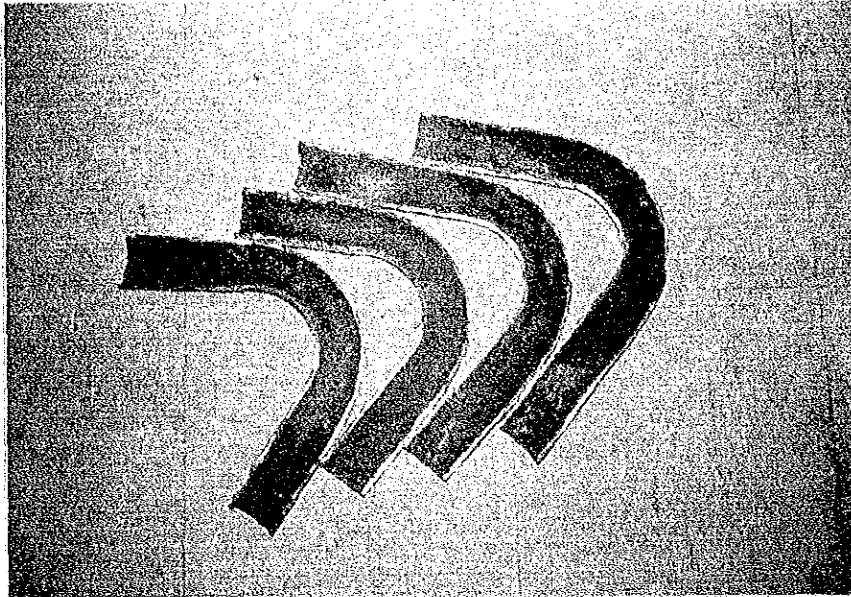


S-1 C.V. OF AUXI-  
LIARY STEAM PIPING

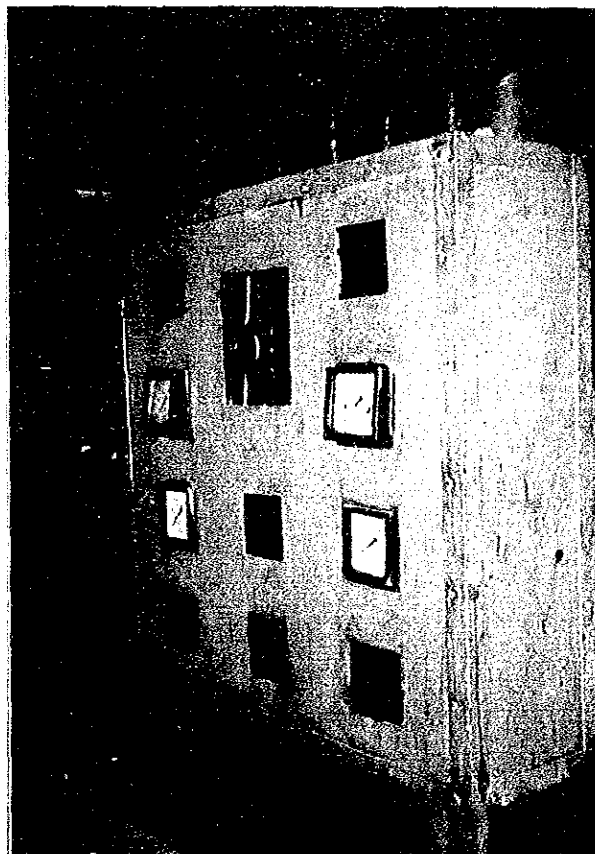
(Take out CV)



PH-7



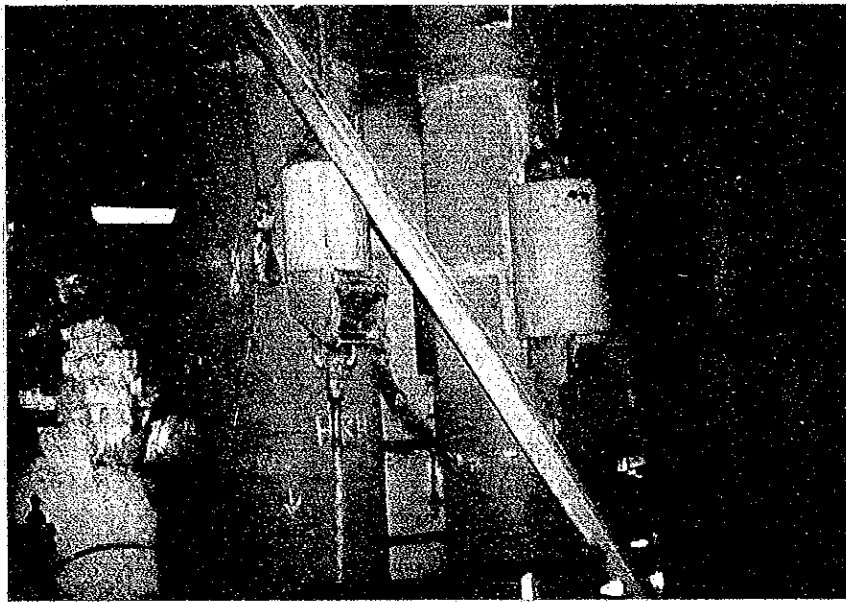
SECTION OF  
G-2 R/H BENT  
TUBES (Inside  
corrosion)



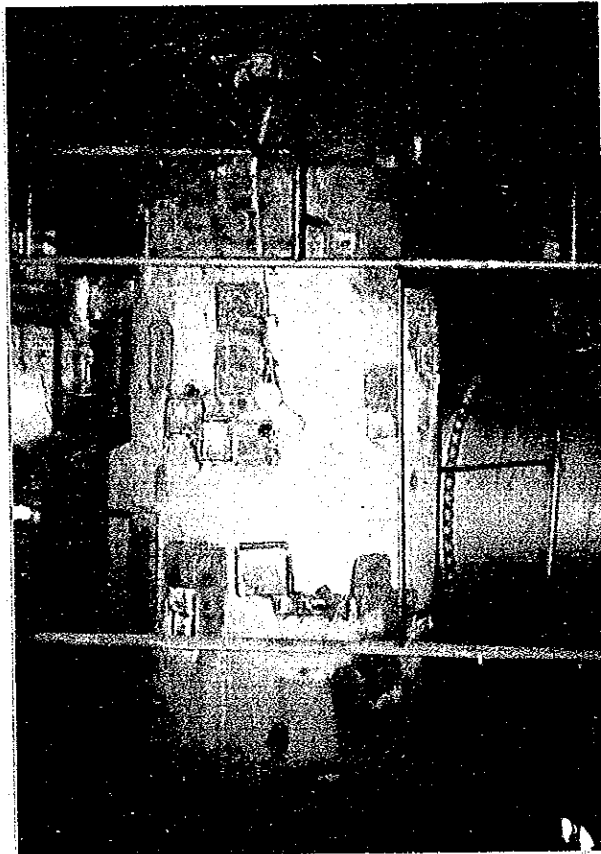
FUEL OIL LOCAL  
INSTRUMENT PANEL  
(during operation)



PH-8



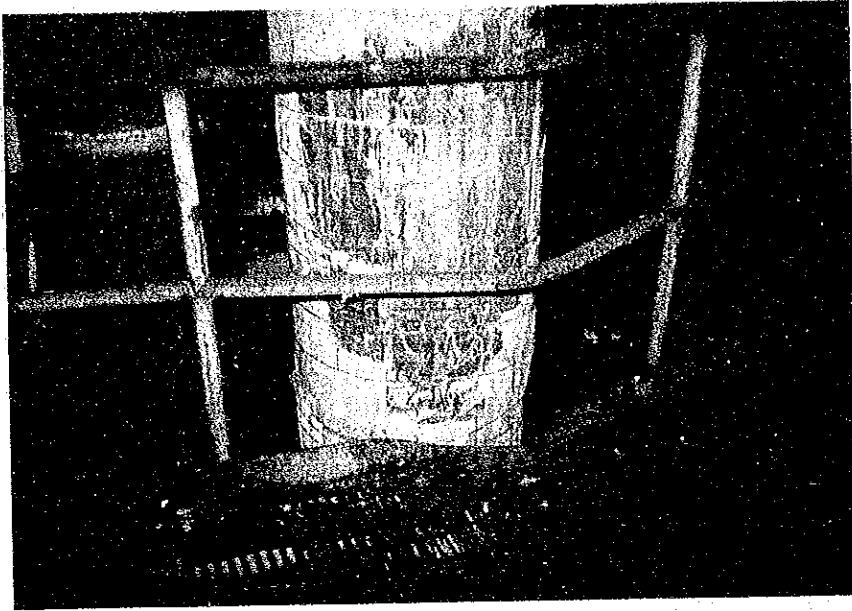
NON-FUNCTIONING CONSTANT LOAD HANGERS OF S-1 MAJOR PIPES



PRESENT CONDITION  
OF S-1 CWP DIS-  
CHARGE PIPE TO  
MAIN CONDENSER







S-1 CRH PIPE & DAMAGED GRATING AT MEZZANINE FLOOR



ANOTHER VIEW OF DAMAGED GRATING



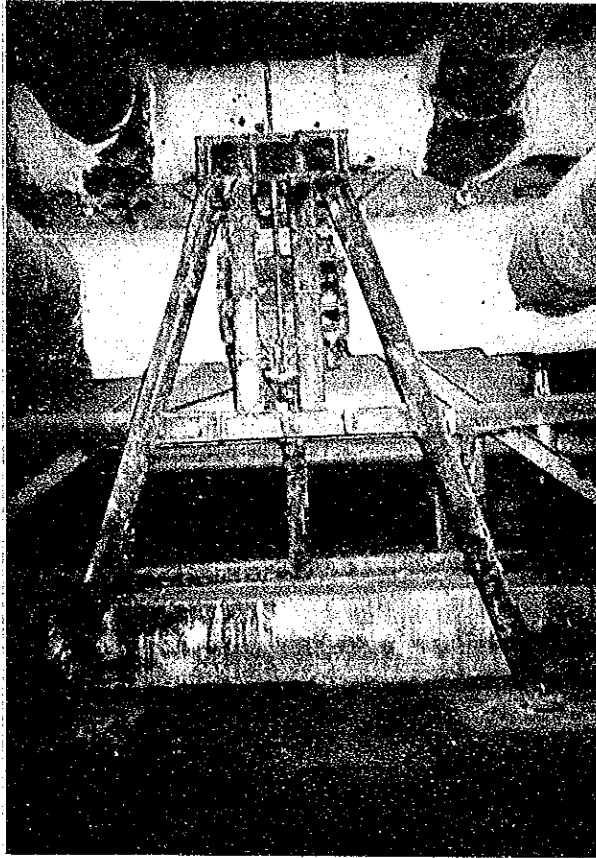
PH-10



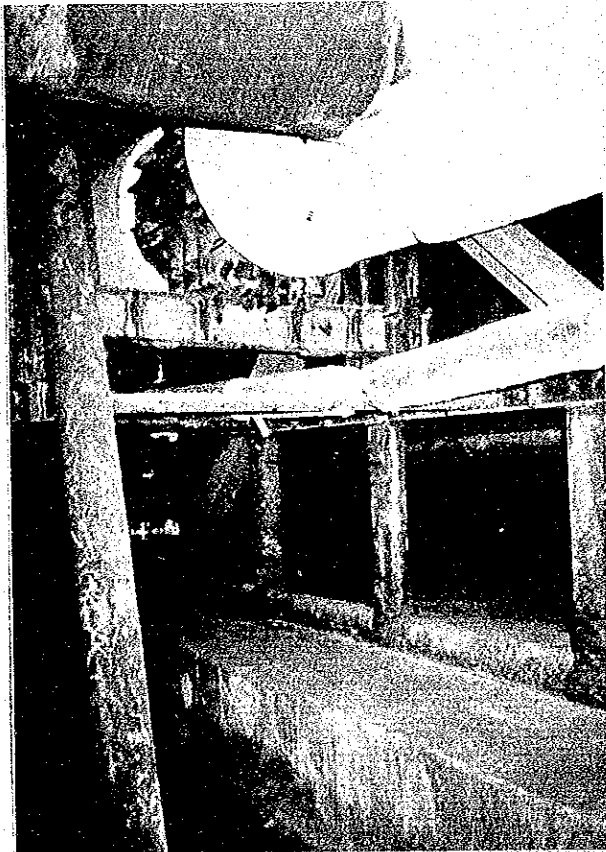
BENT I-BEAM OF S-1  
MEZZANINE FLOOR  
NEAR CRH PIPE



PH-11

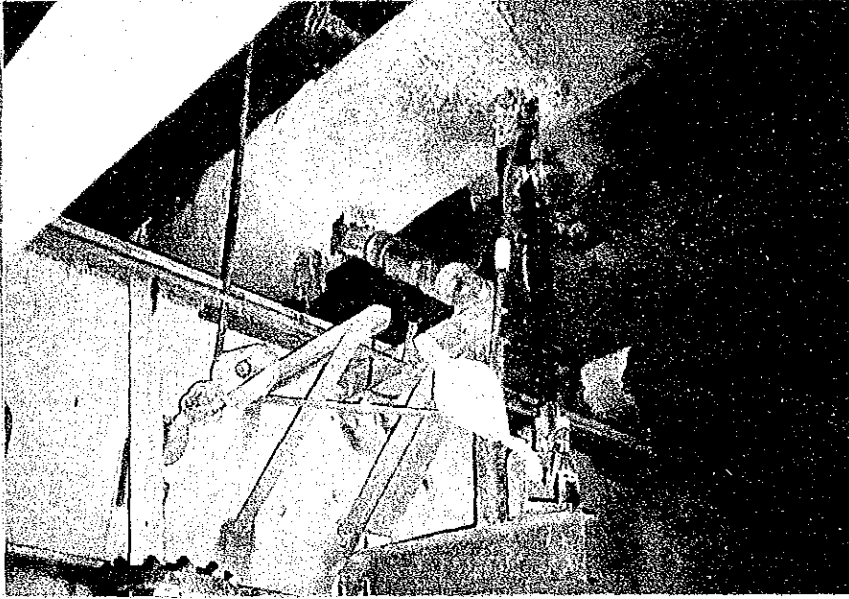


MAIN STEAM PIPE  
MOVEMENT LIMITER

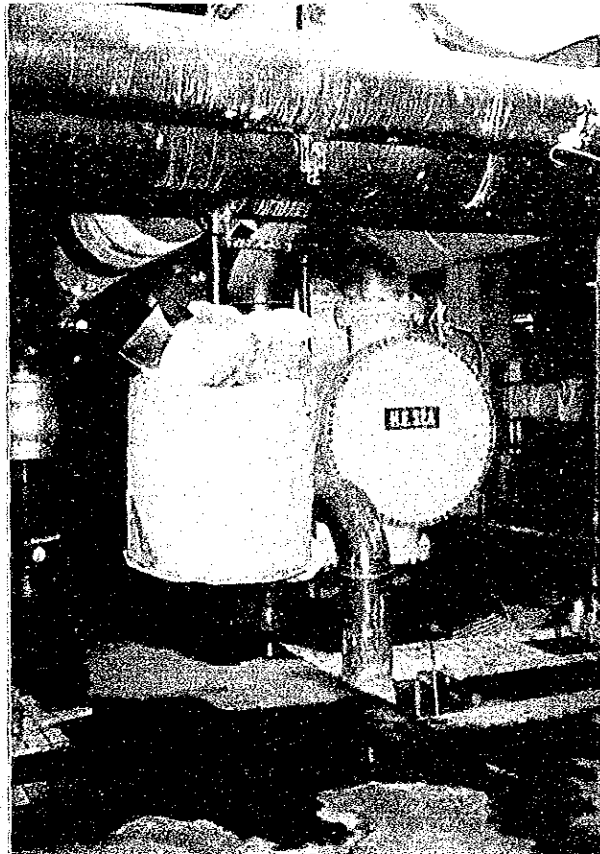


CRH PIPE MOVE-  
MENT LIMITER





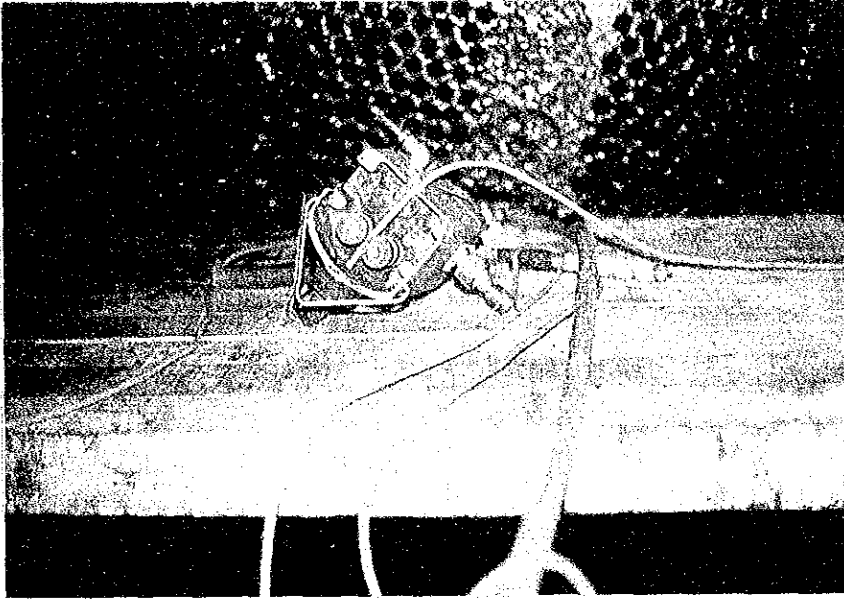
S-2 CRH  
PIPE  
TEMPORARY  
HANGER



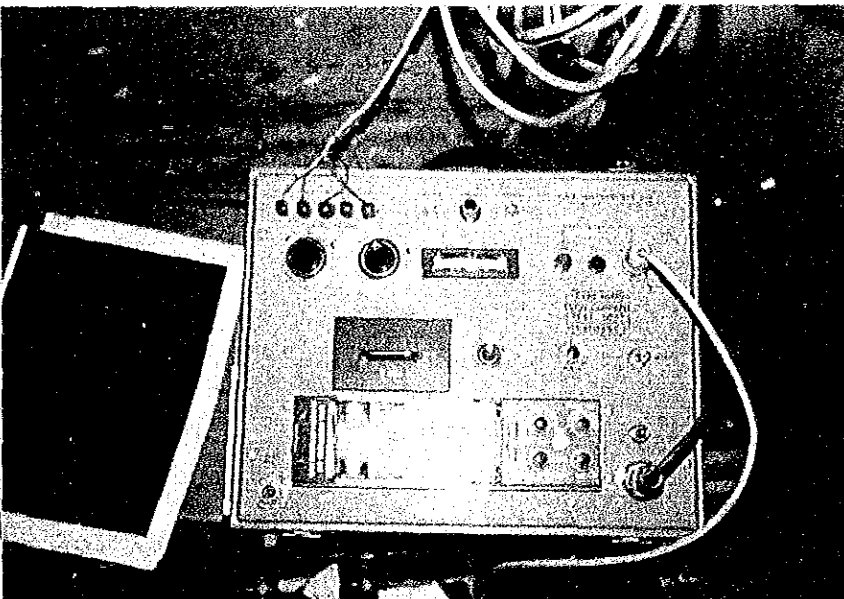
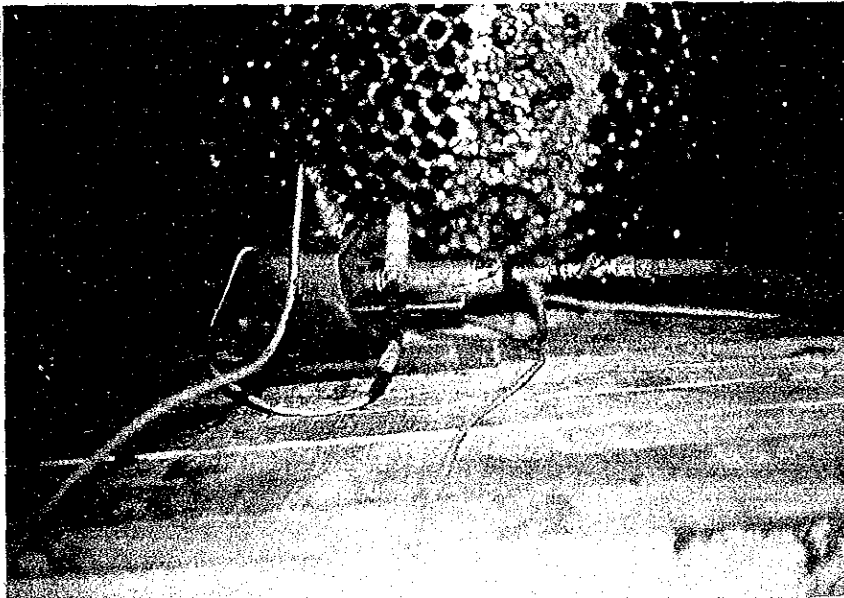
S-2 CRH PIPE  
TEMPORARY  
HANGER





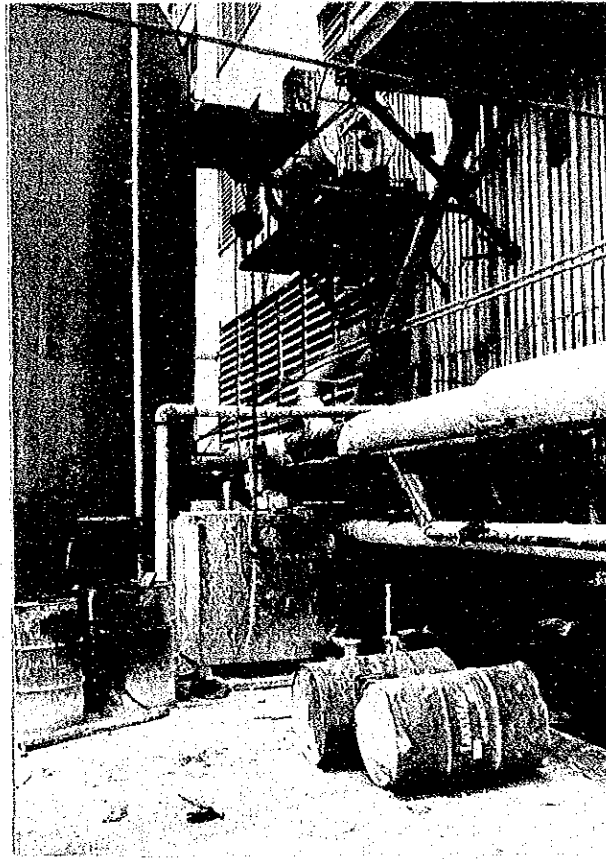


EDDY CURRENT  
MEASURING  
INSTRUMENT

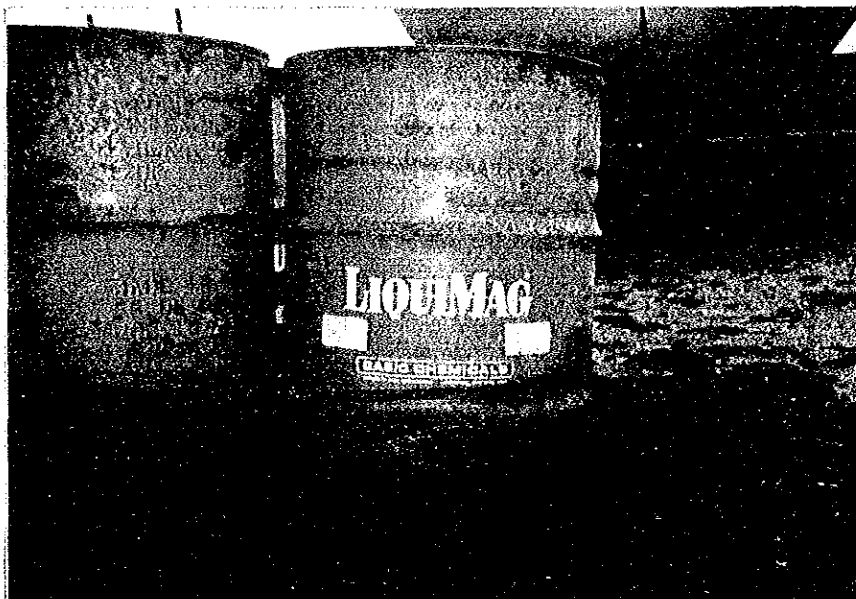




PH-14



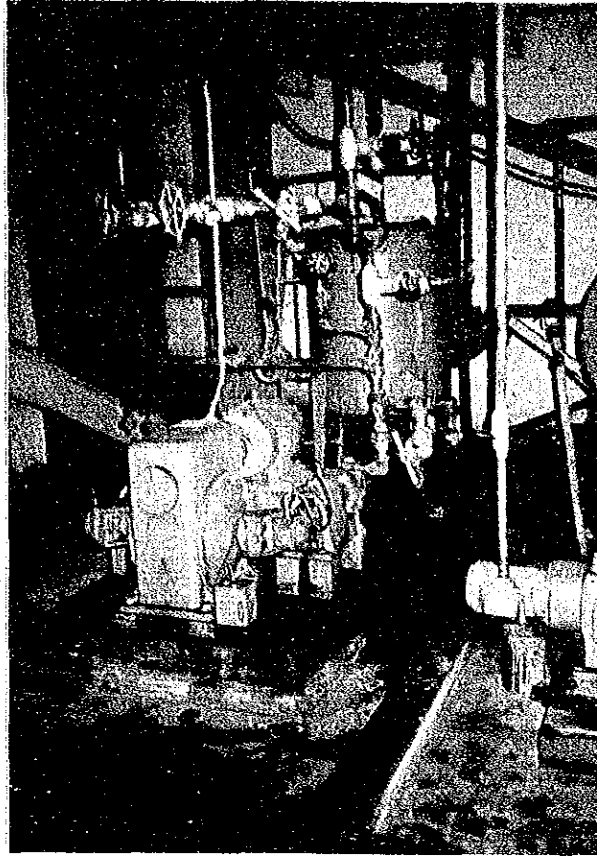
LIQUIMAG LOADING  
AREA



LIQUIMAG CONTAINER DRUMS



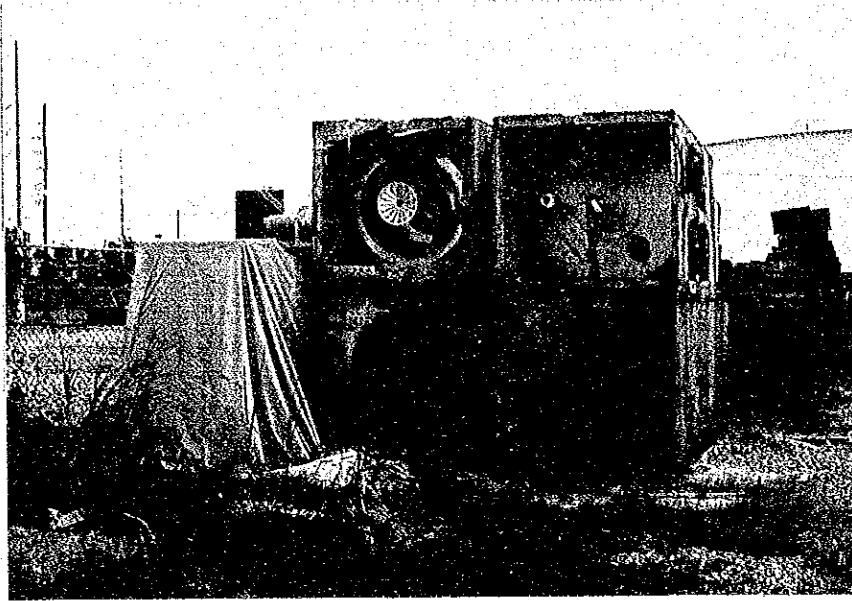
PH-15



LIQUIMAG INJECTION PUMP



PH-16



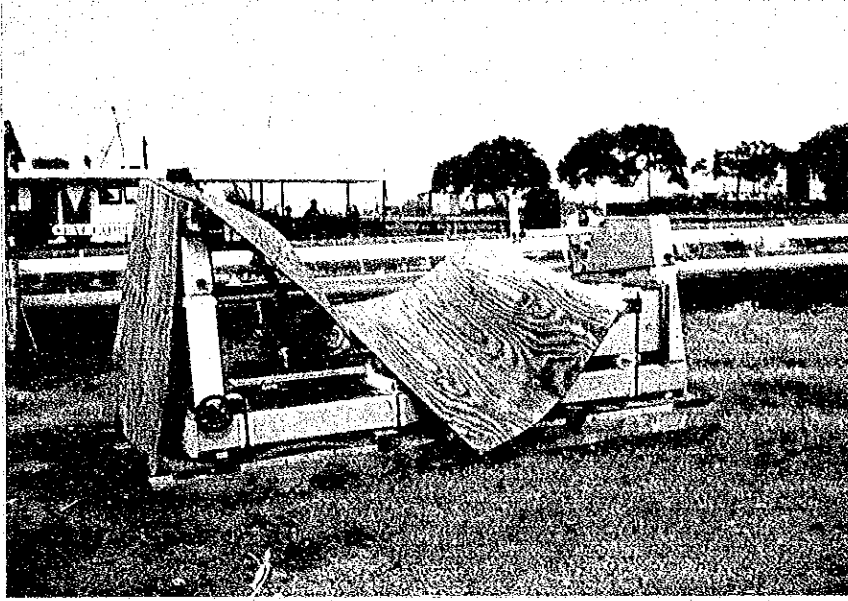
SITUATION AT MATERIALS/EQUIPMENT OUTDOOR STORAGE  
AREA



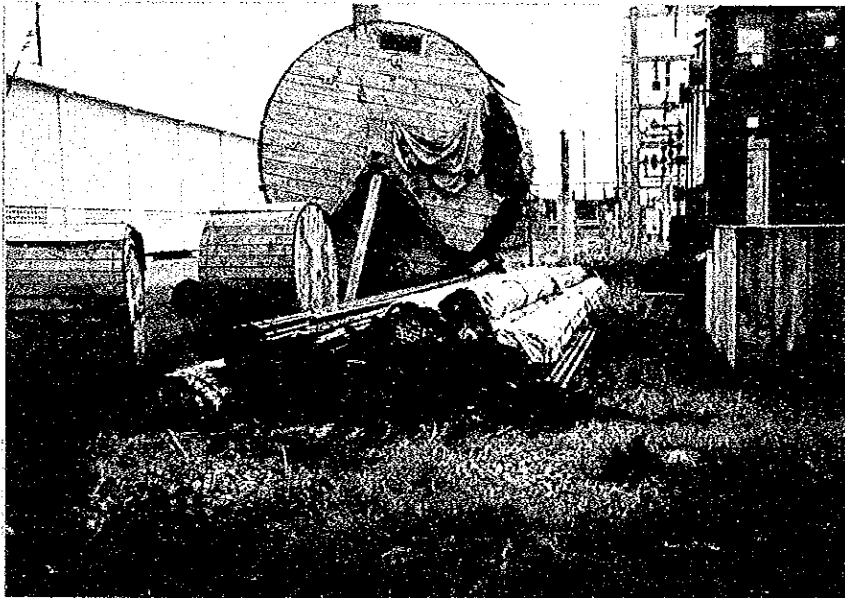
ANOTHER SITUATION AT OUTDOOR STORAGE AREA





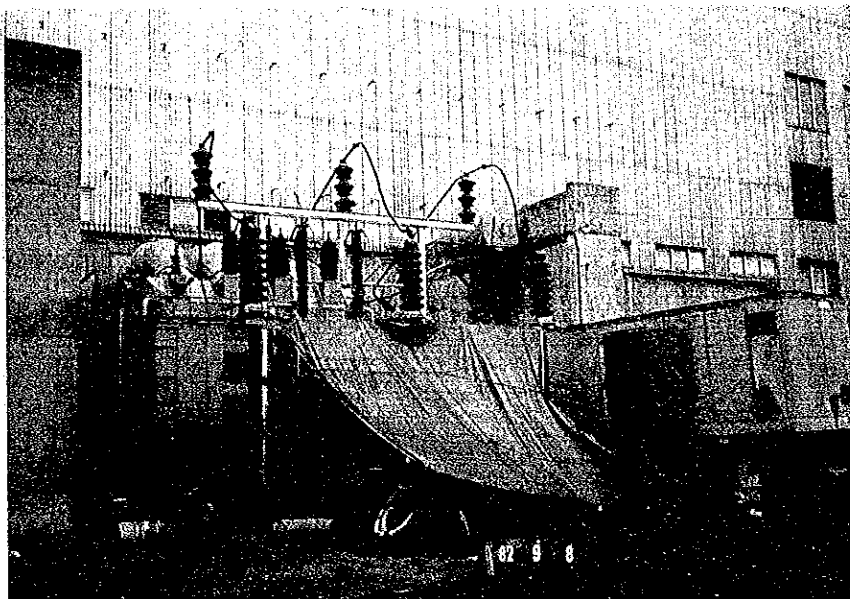


SITUATIONS AT THE  
MATERIALS/EQUIP-  
MENT OUTDOOR  
STORAGE AREA

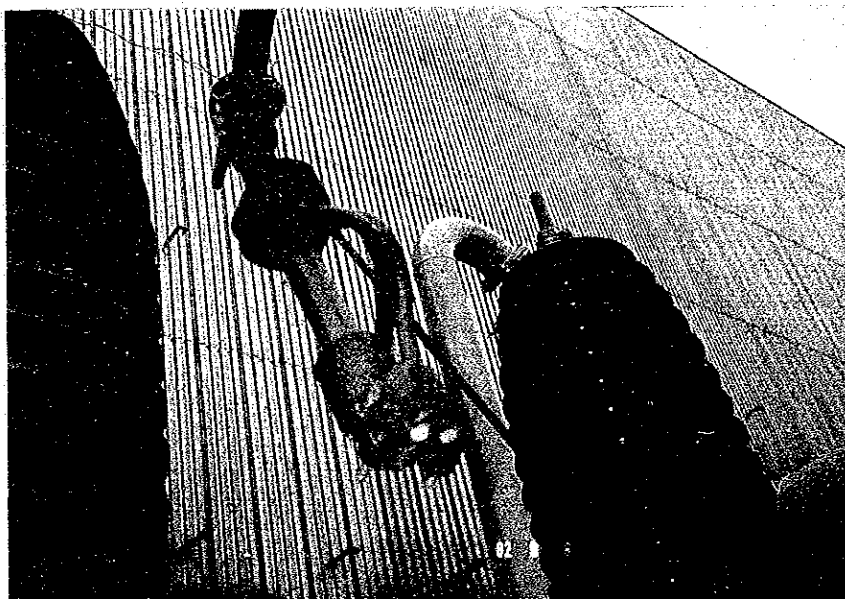




G-2 Oil filtering works during annual overhaul.



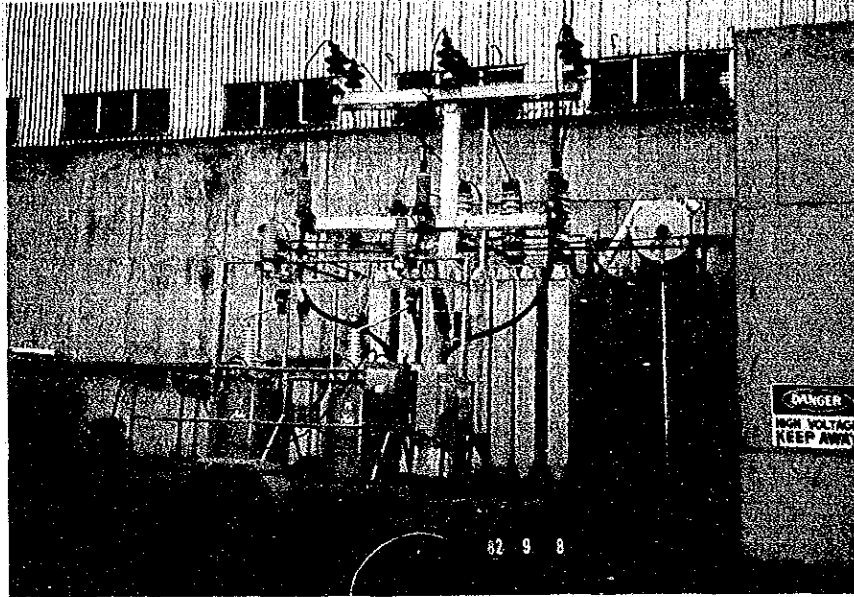
Servicing of terminal.



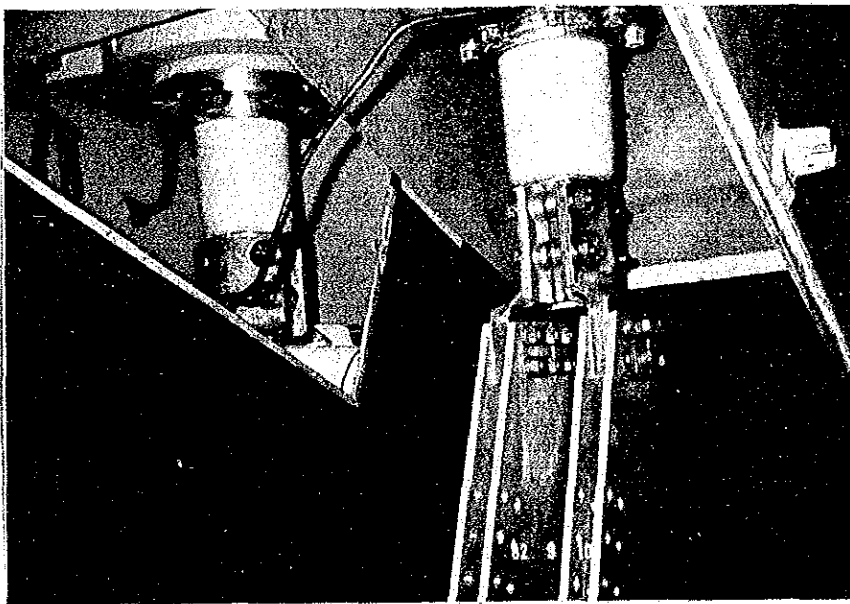


PH-19

Temporary transformer is connected to the emergency transformer. Dangerous!

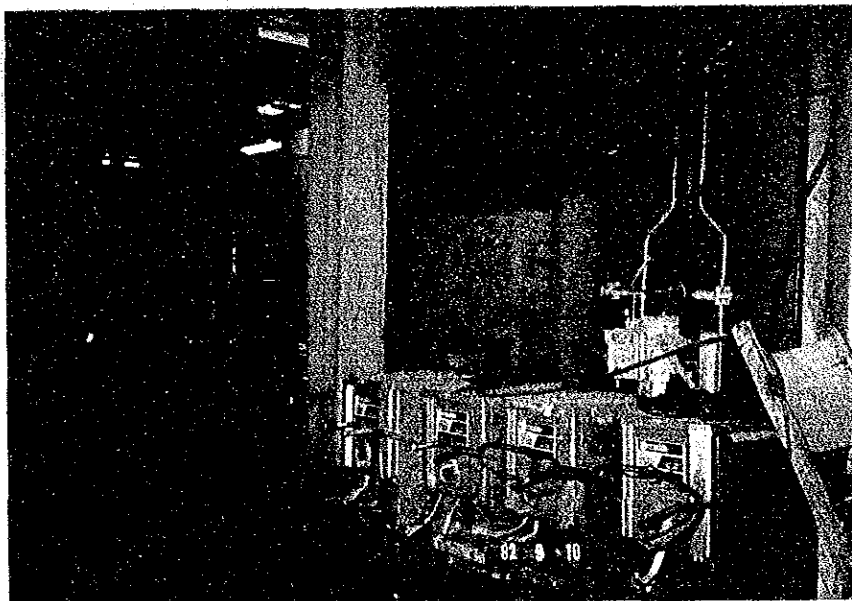


G-2 Servicing of generator bushing.





G - 2 Power for overhauling is taken from another unit which is in operation. Dangerous!

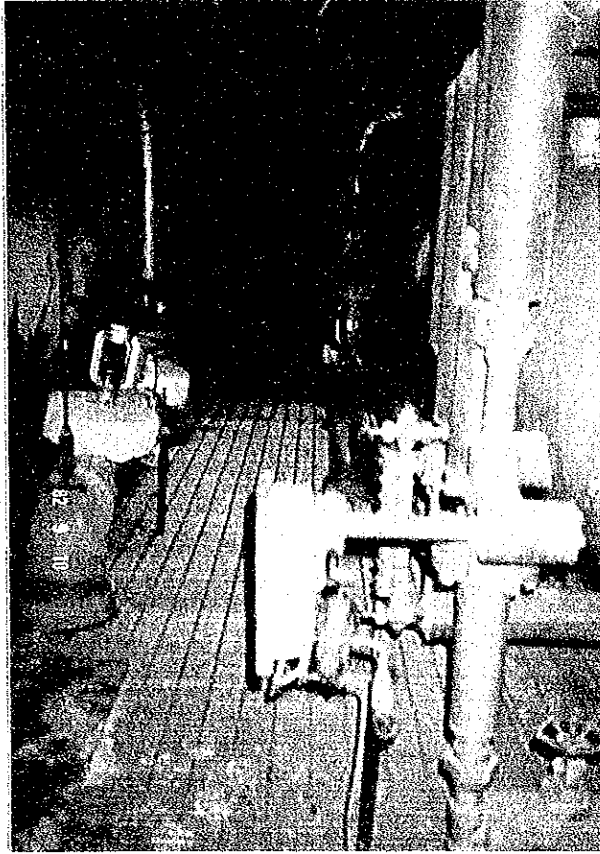


Frequency fluctuation on Sept. 9, 1982 due to typhoon.



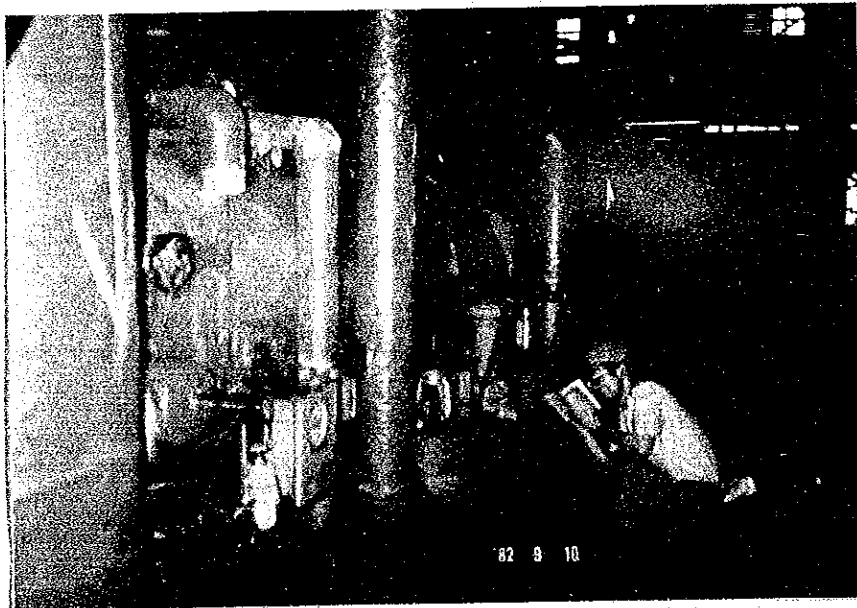






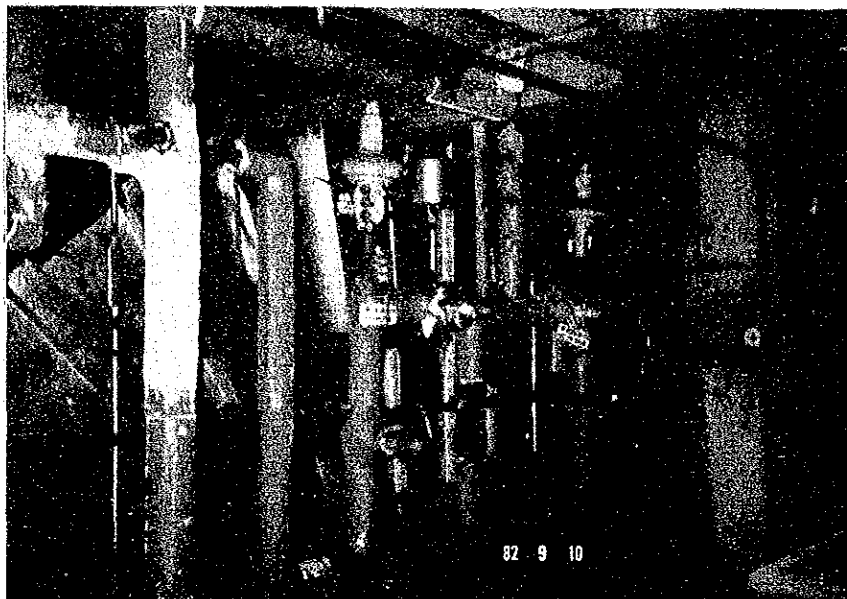
G-1 L.P.H. drain  
valve. No by-pass  
valve is installed.

Leaking steam at G-1

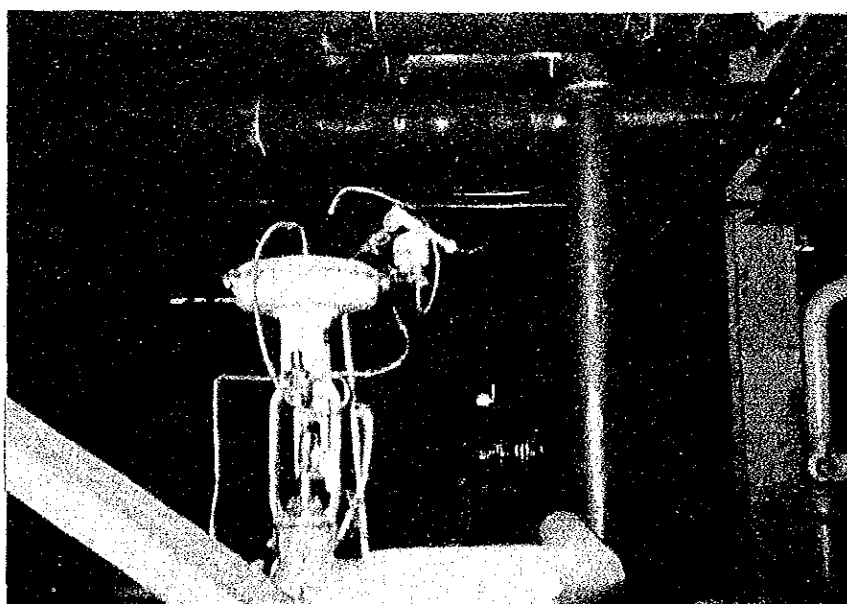




G-1 Auxiliary steam under manual operation.

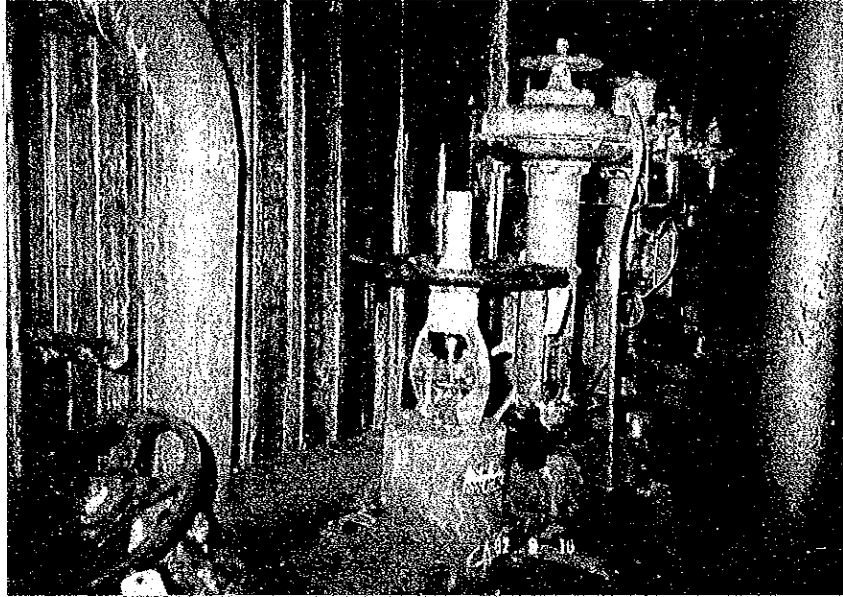


G-1 Boiler feed pump minimum flow valve is locked at open position. Save energy!

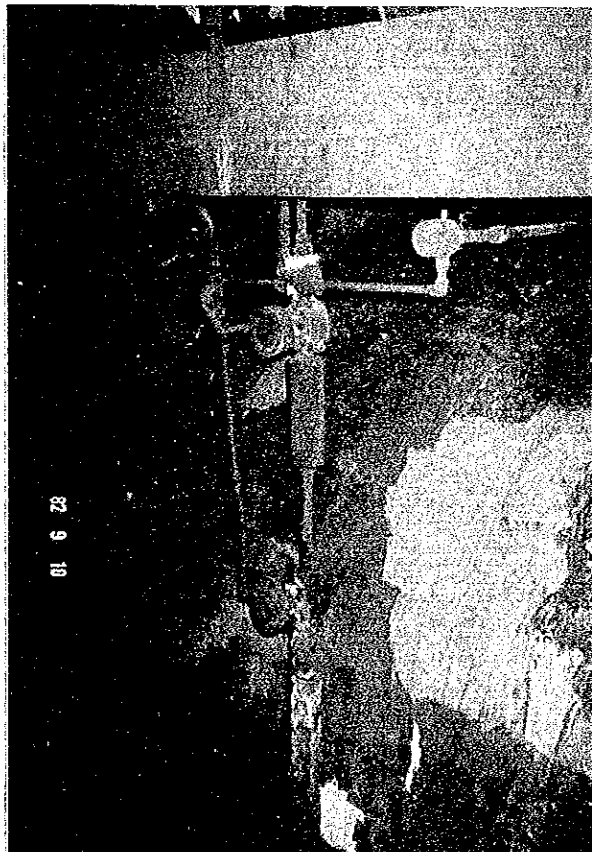




G-1. Spray control valve.

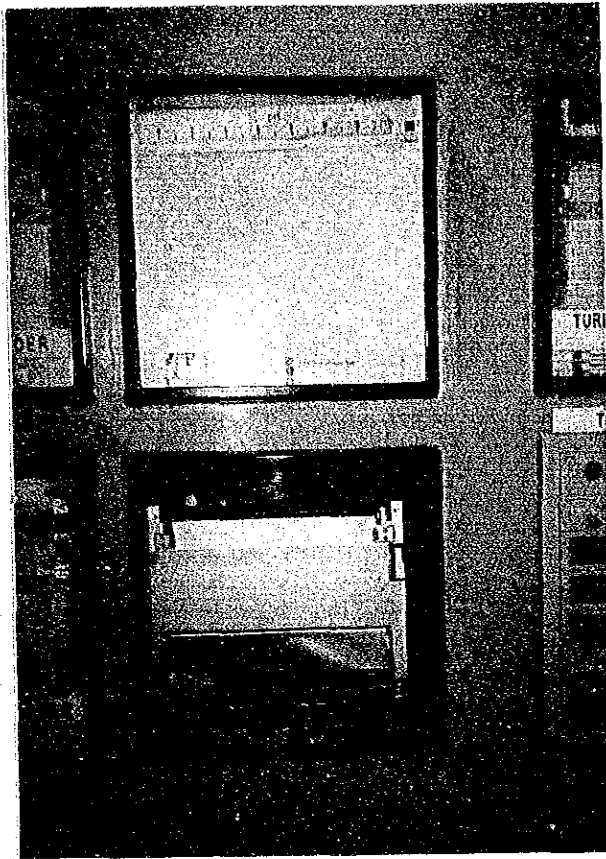


G-1. Deaerator level switch which initiates plant tripping.





PH-24



All parts have been removed from pH meter. Important recorder! S-1

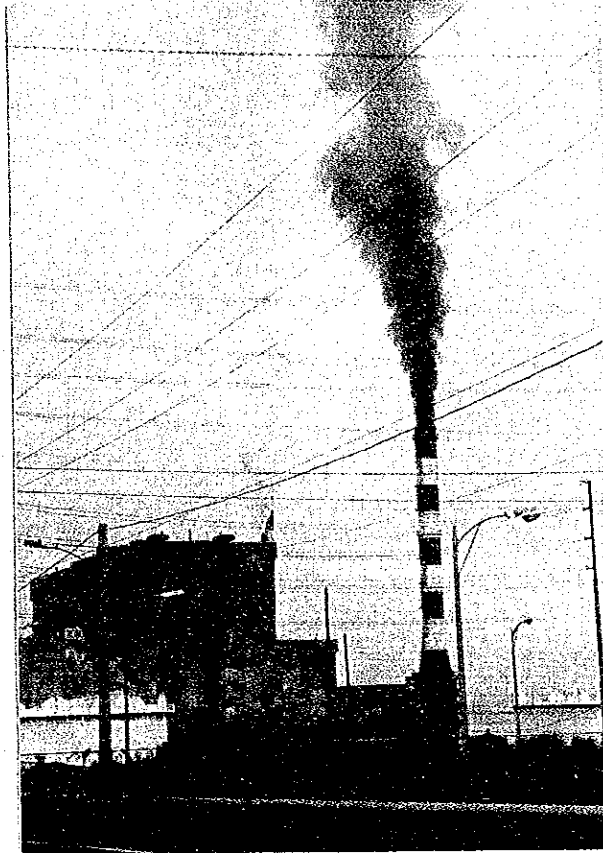
Emergency back-up valve for control air has been isolated. G-1.





PH-25

MALAYA THERMAL PLANT



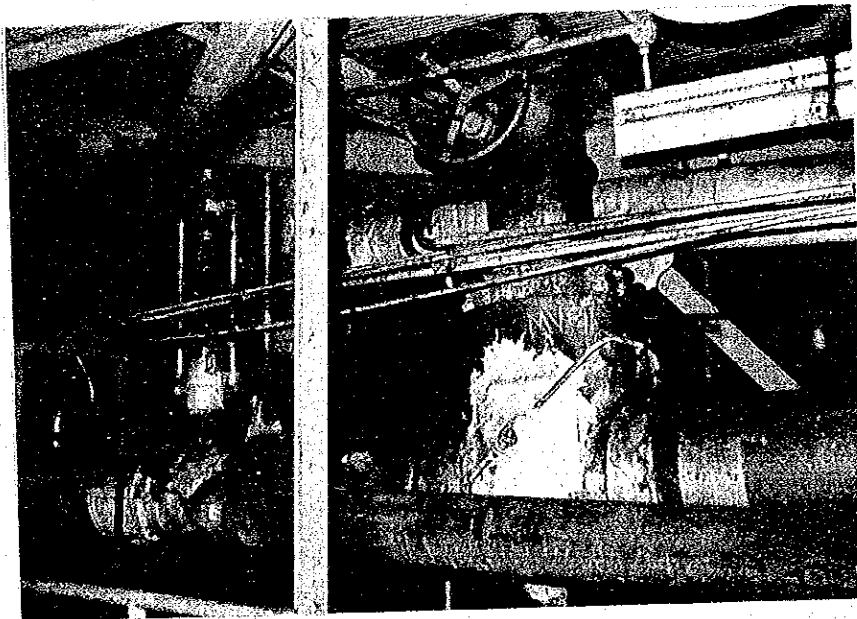
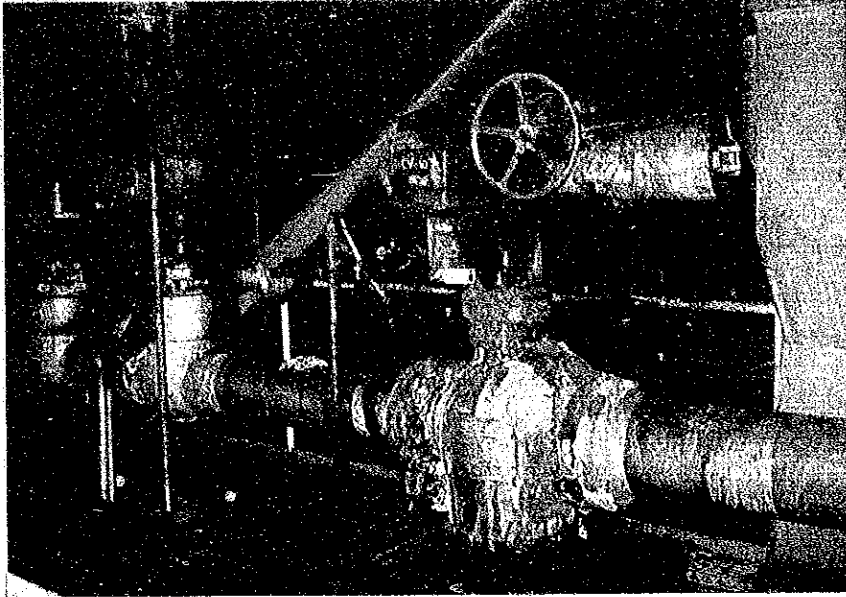
Black smoke due to low excess air caused by air heater clogging during load-up.



PH-26

M - 1 CV-103

Valve and its accessories are corroded  
by flue gas leak

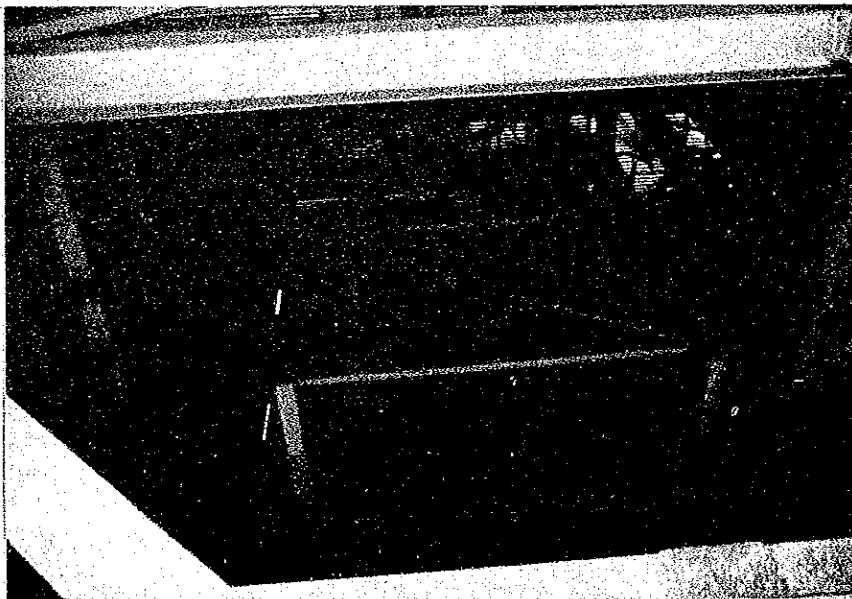
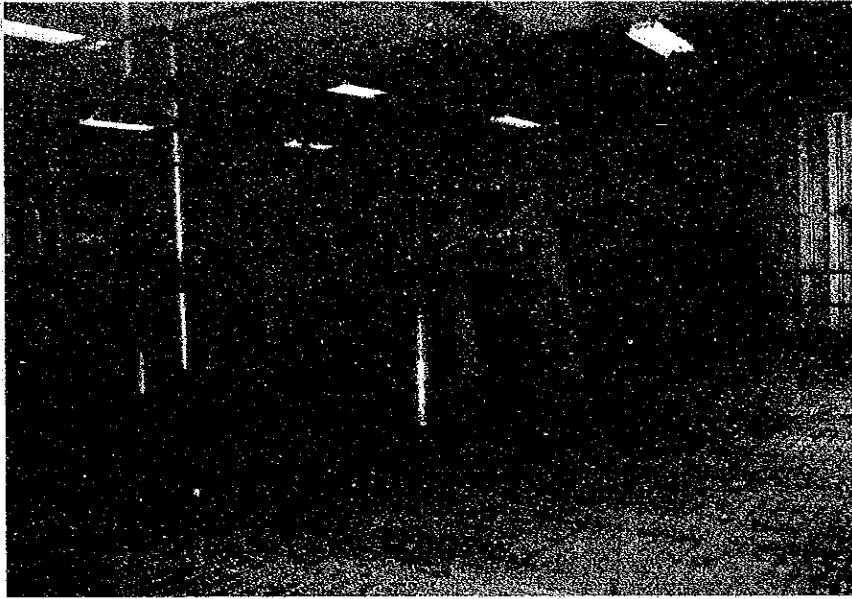


M - 1 MV - 1A



PH-27

M - 2 RACK SOOTBLOWER. There are much gas leaks at seal points.

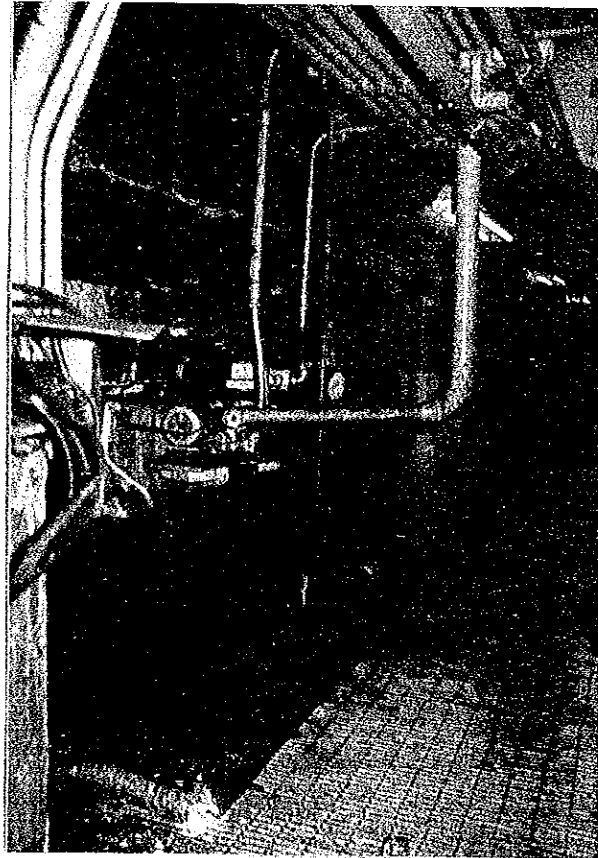
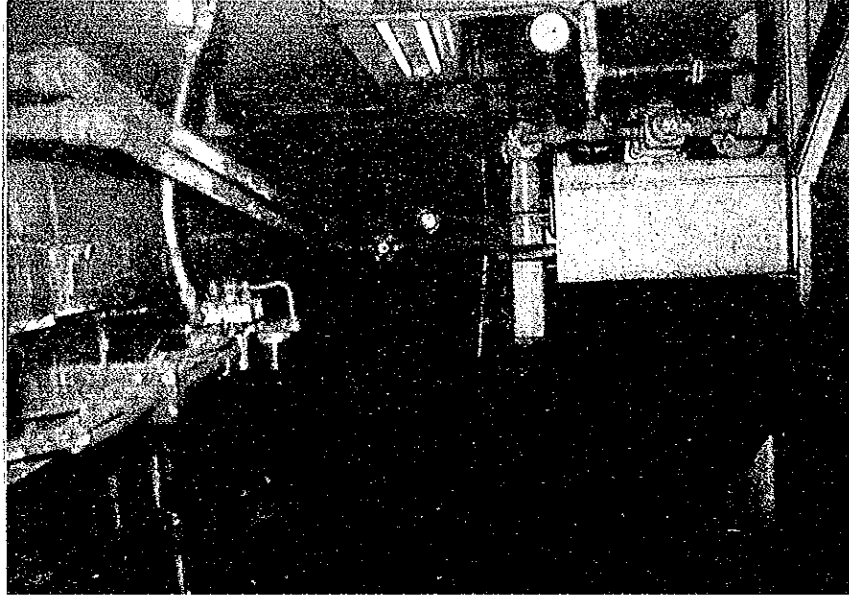


M - 2 FDF AIR SUCTION  
Poor visibility due to gas leak at AH casing



PH-28

M - 2 Surrounding air heater is filled with flue gas.  
M - 2



M - 2 2A-AH

Corroded AH accessories



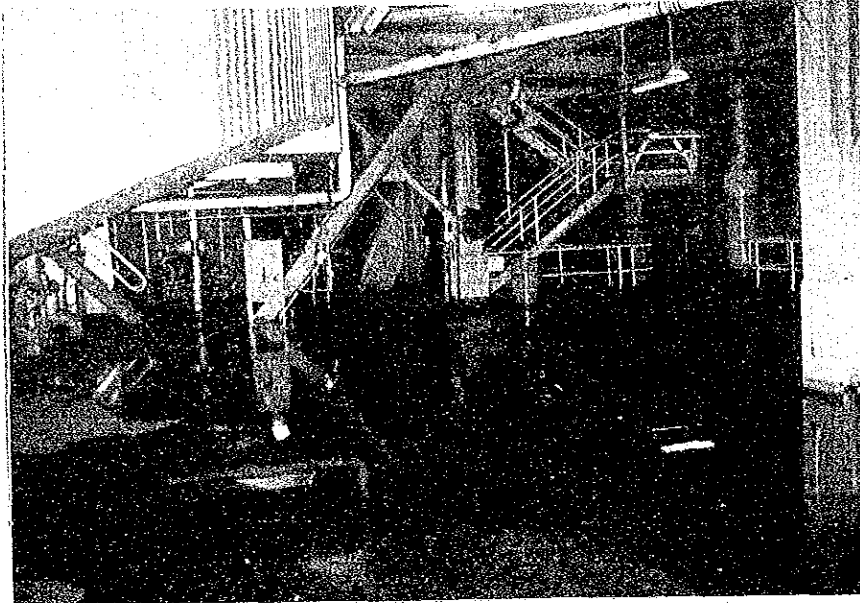


PH-29

FLUE GAS LEAK

There are much gas leak but also roof drain leak

M - 2 3FL Right side of boiler



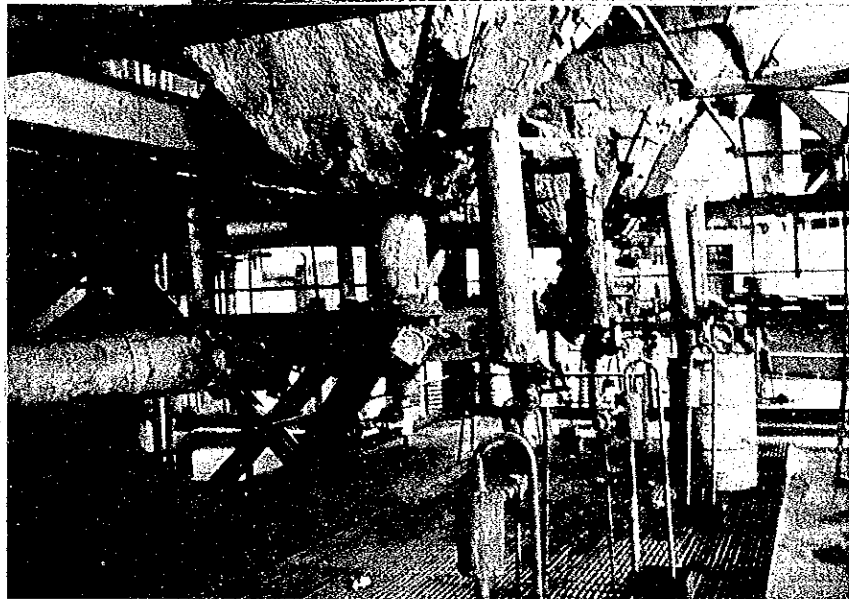
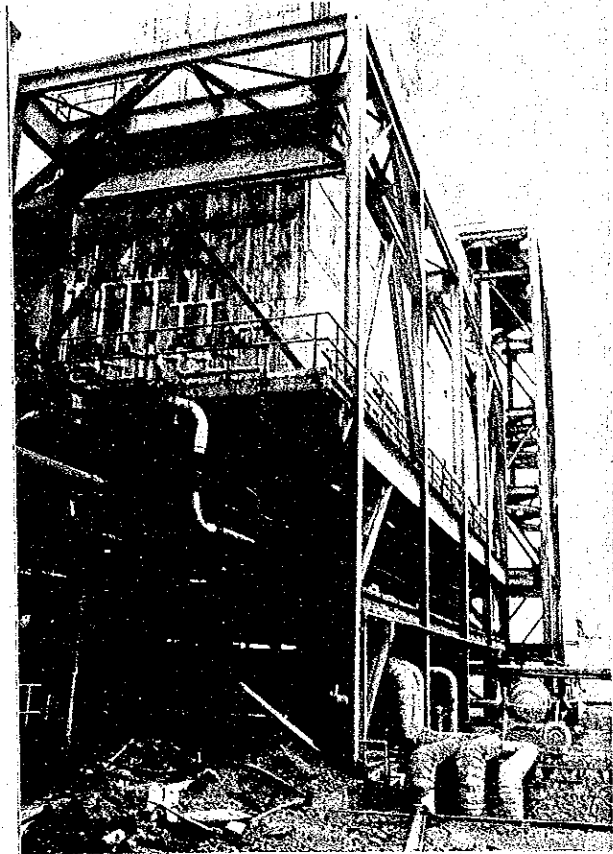
M - 2

Around air heater with brownish and corrosive water coming from roof drain leak



M - 1 Dust Collector

Flue gas leaks attack also  
the dust collector

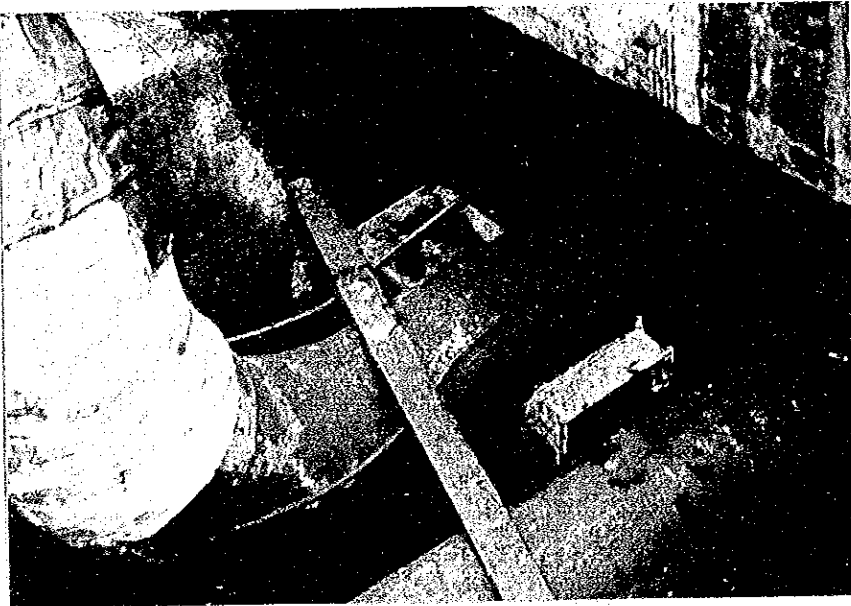
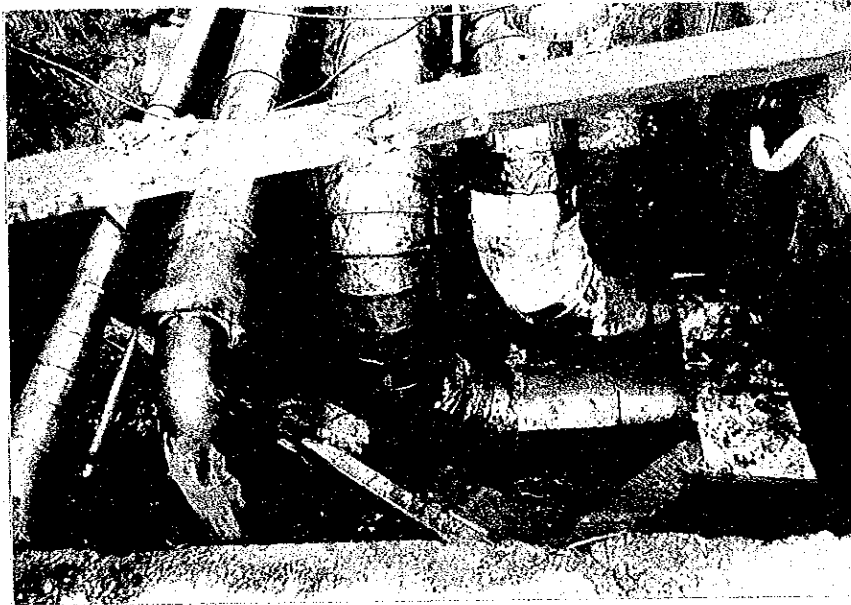


M - 2 Dust Collector Hopper



PH-31

Out door Residual oil supply pipe  
Oil drain pipe is leaking



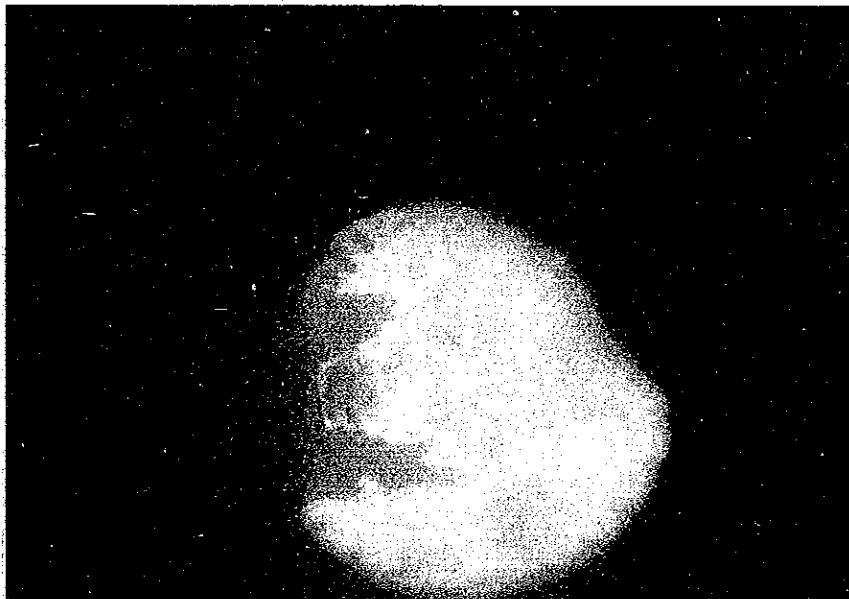
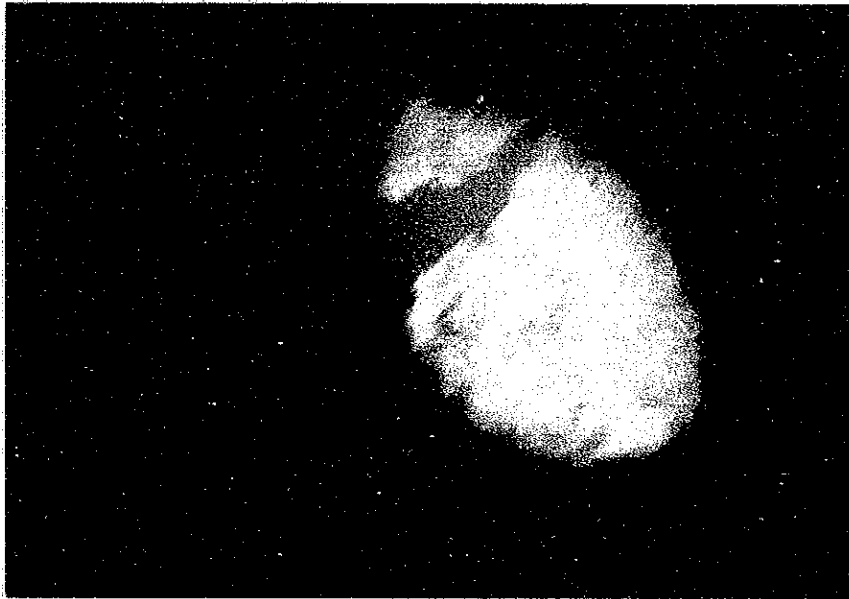
Leaking point was covered by box



Combustion should be maintained in good condition and it is an important job for operations. Strict observation should be done and if some abnormal condition is found, inspection and counter measure should be taken.

Combustion condition is not so good, no constant differential pressure pump operation

M - 2 condition of firing. There is unstable flame.



M - 2 There is black skirt at burner portion.

