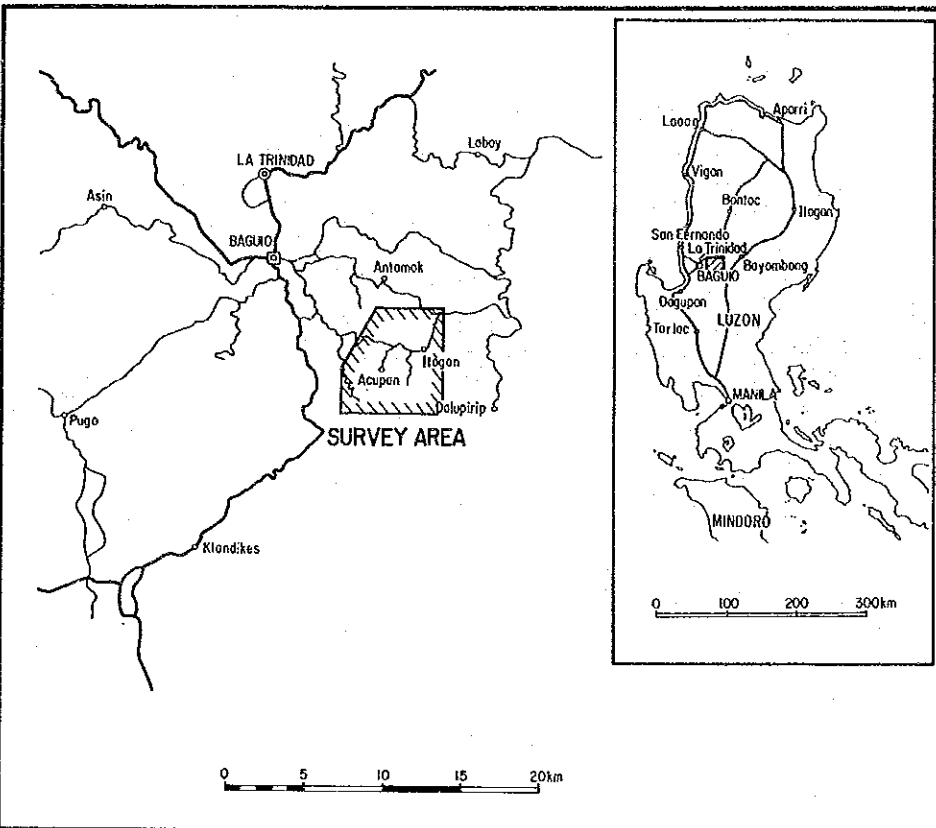
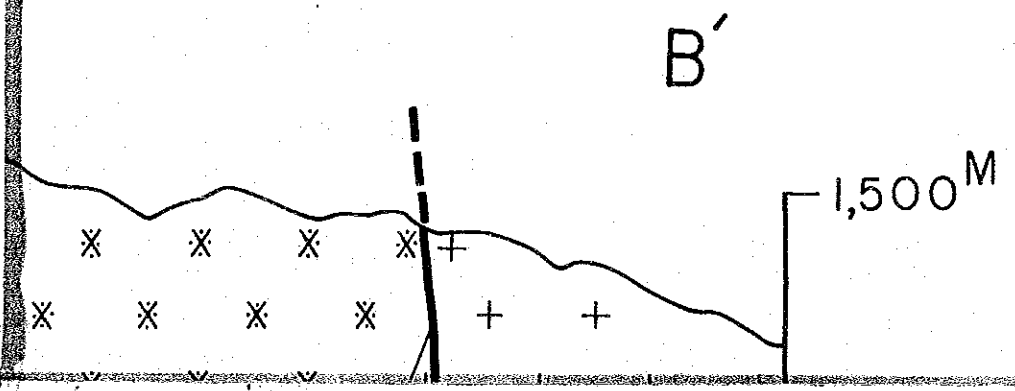
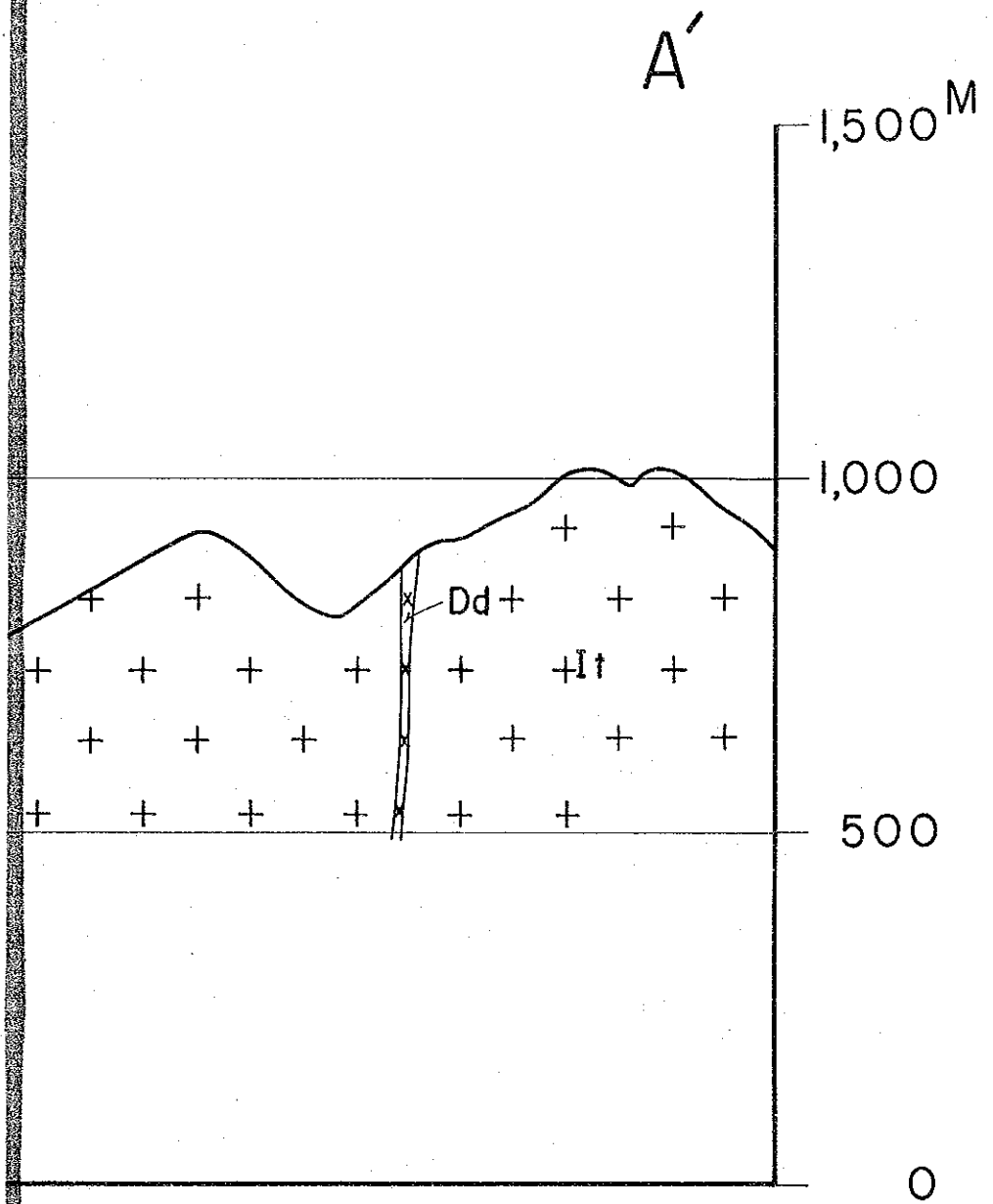


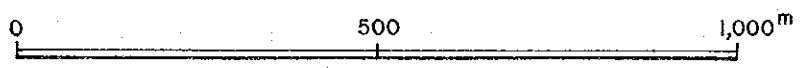
Acupan Itogon Geothermal Development Survey
 the Republic of the Philippines

Fig. III-1-4 Geological Profiles.

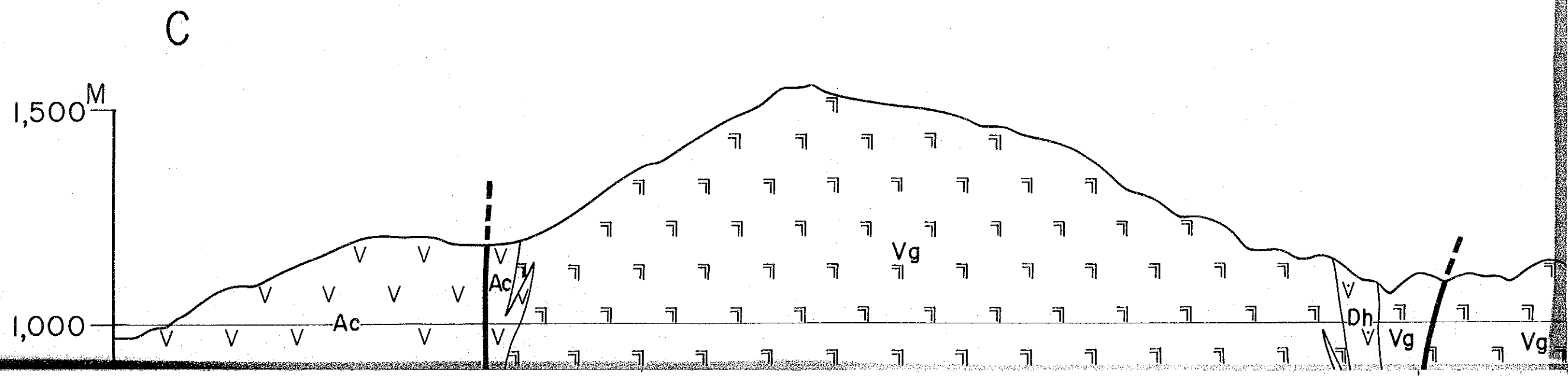
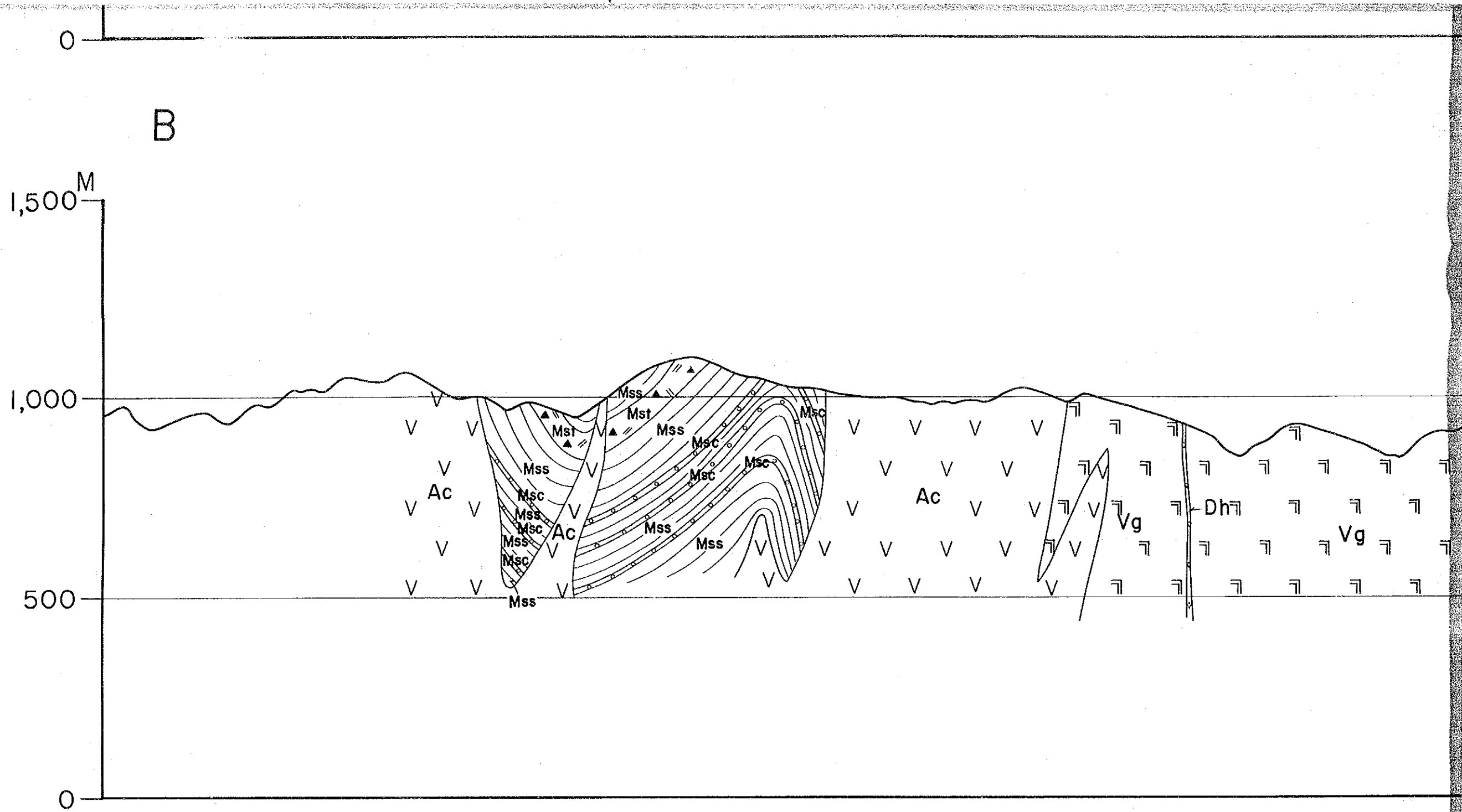


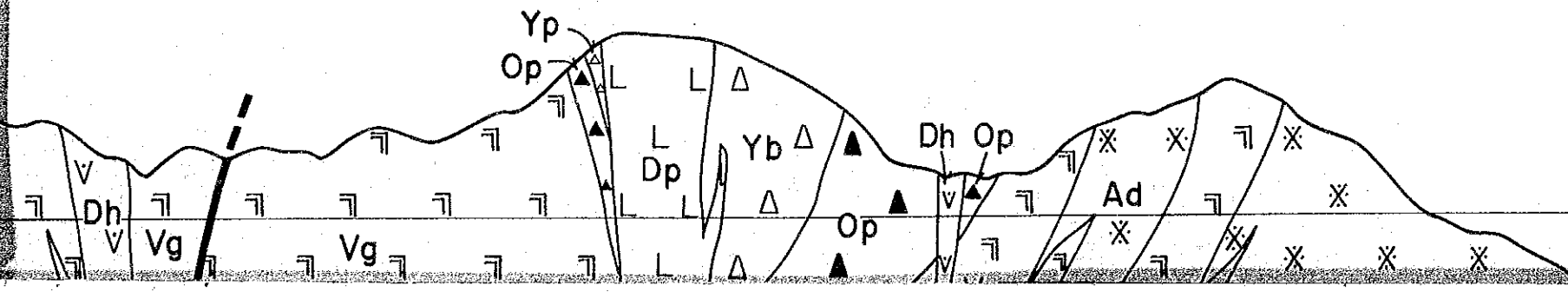
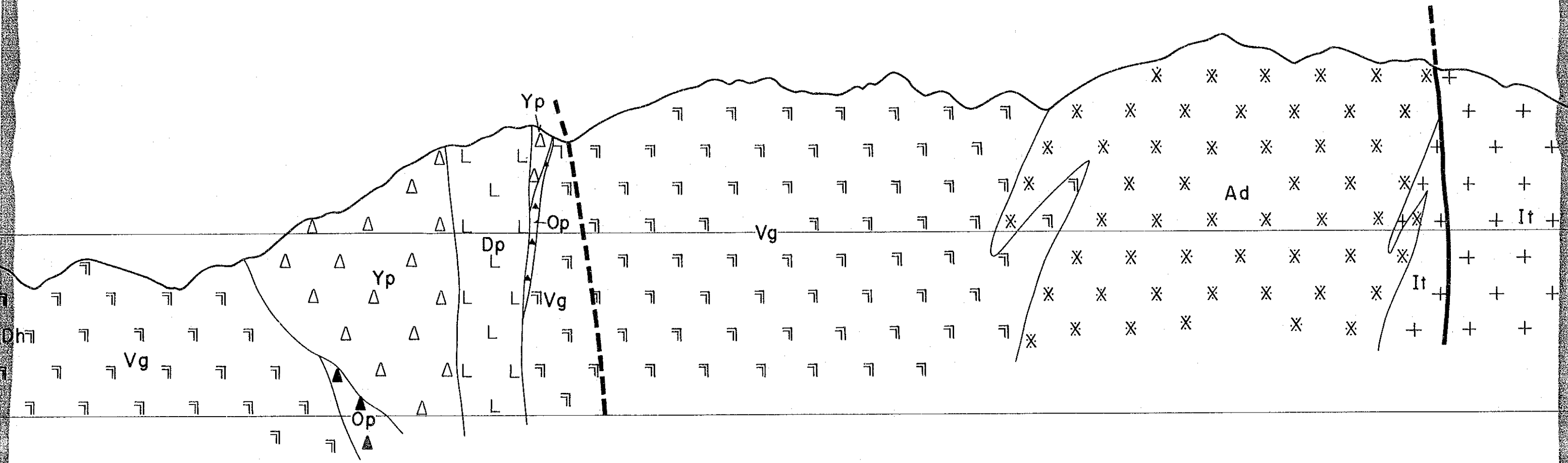
Japan International Cooperation Agency

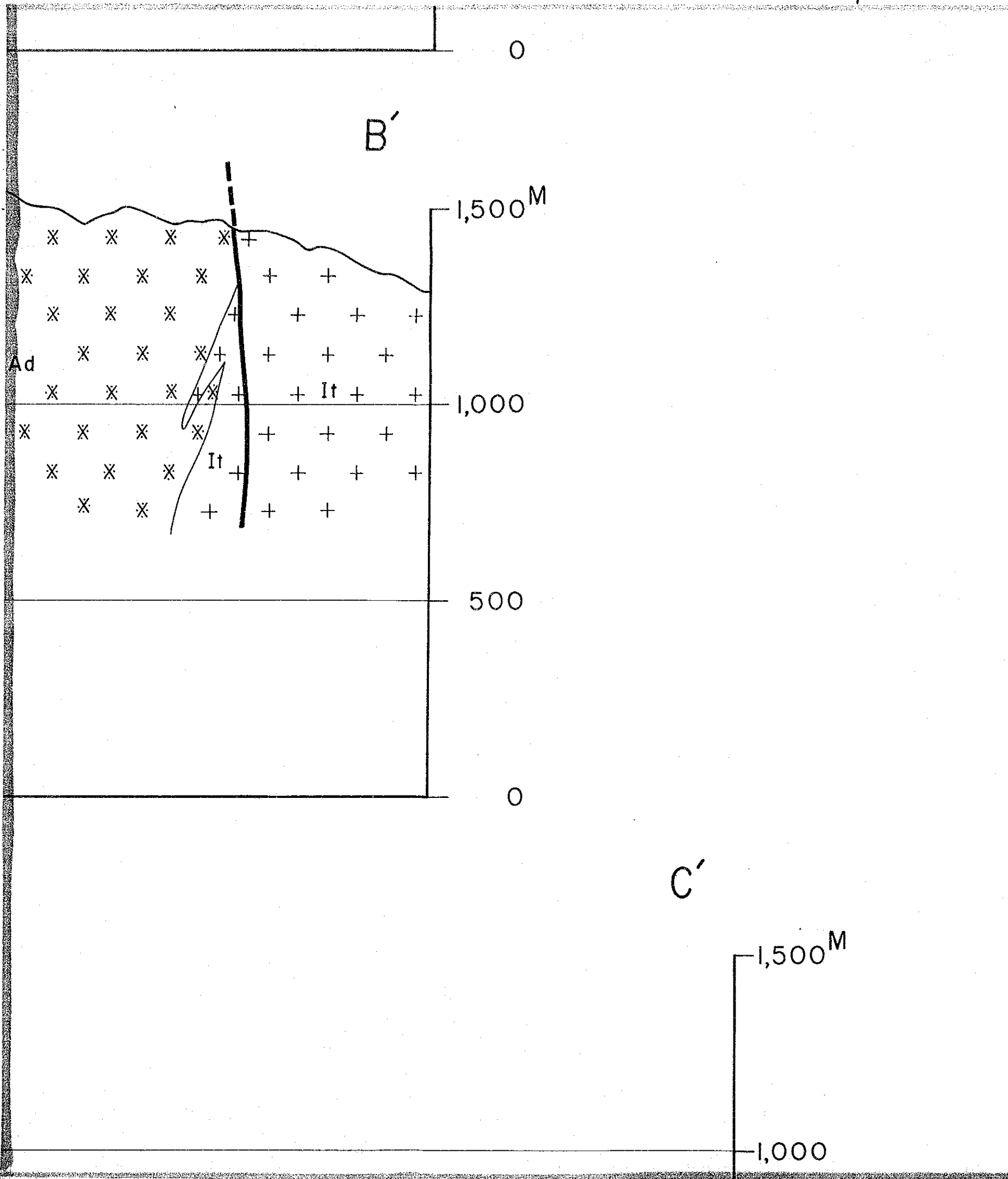
Scale 1 : 10,000



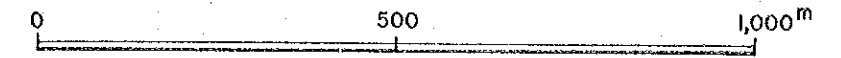
LEGEND





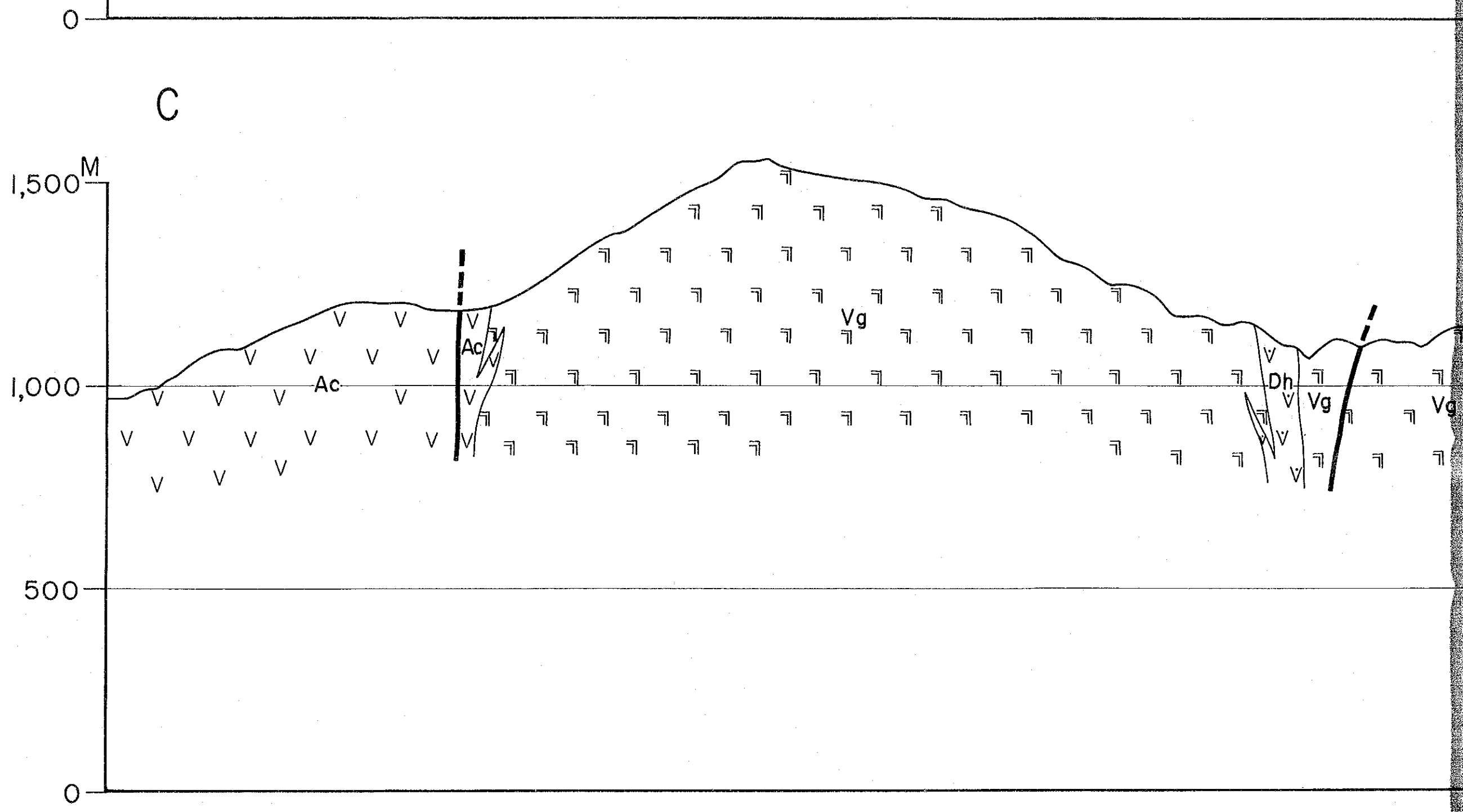


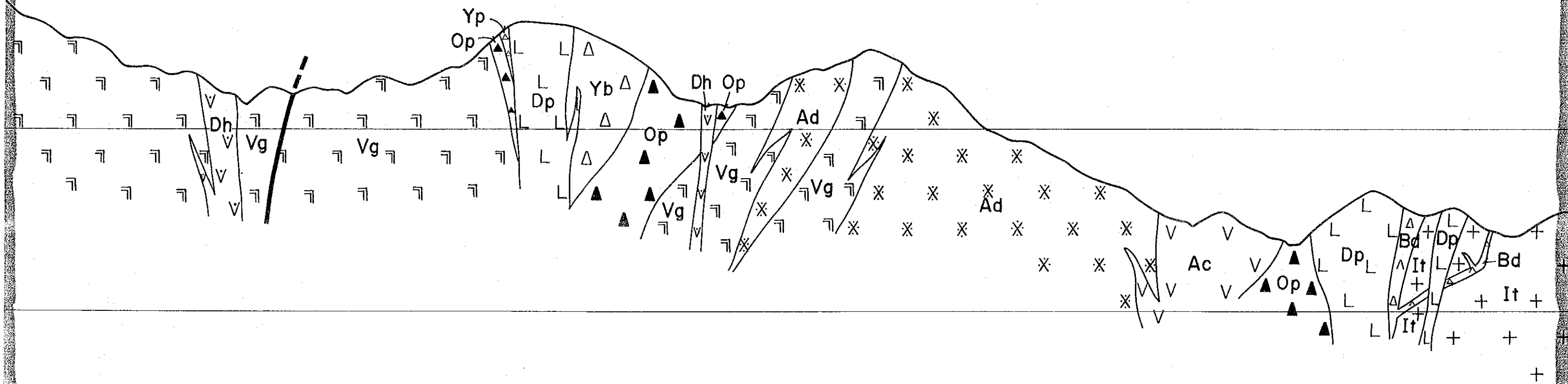
Scale 1 : 10,000

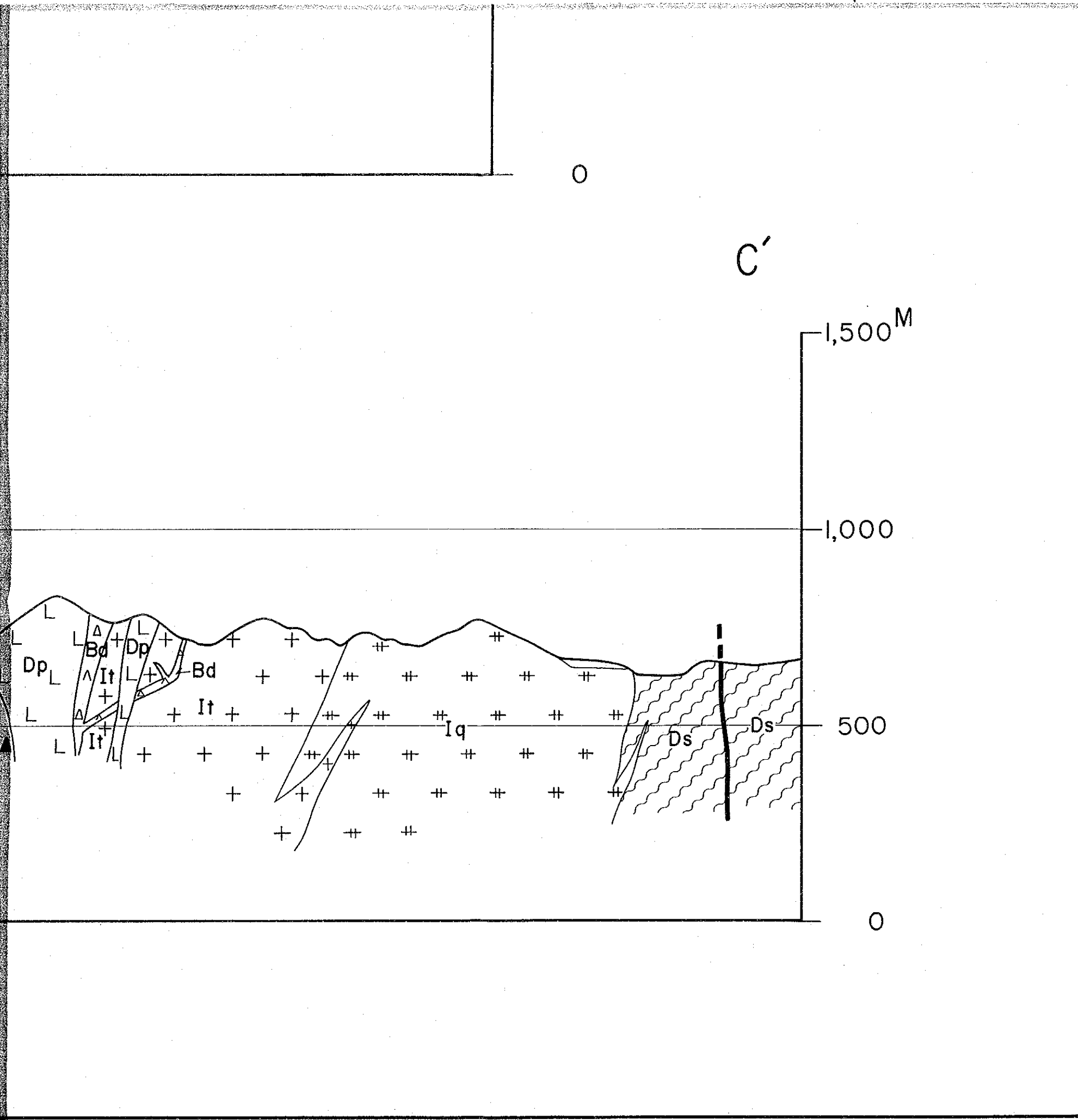


LEGEND

QUATERNARY	Terrace deposit		conglomerate sand clay	
	Pleistocene	Dacite plug		dacite (1.28~0.49 Ma)
		Breccia dyke		dacite vent breccia (0.84 Ma)
	Young plug		dacite pyroclastic rock	
NEOGENE	Pliocene	Old plug		andesitic pyroclastic rock
				andesitic pyroclastic rock
	Miocene	Miocene sedimentary rocks		andesite lava
				conglomerate
				tuffaceous sandstone sandstone, coarse tuff
	CRETACEOUS	Dalupirip schist		actinolite schist epidote-actinolite schist (82.6 Ma)
< Intrusive rocks >				
Agno Batholith	Dyke rocks		mega-hornblende andesite porphyry hornblende andesite porphyry (2.37 Ma)	
			mega plagioclase bearing andesite porphyry	
	Andesite complex		hornblende andesite porphyry, plagioclase andesite porphyry, aphanitic andesite (2.38 Ma)	
	Virac granodiorite		hornblende-biotite granodiorite (5.2 Ma)	
	Dyke rock		diorite	
	Itogon tonalite		hornblende-biotite tonalite (17.9 Ma)	
	Itogon quartz-diorite		(biotite-) hornblende quartz-diorite (21.7 Ma)	
	Antamok diorite		hornblende diorite to hornblende gabbro	
			fault	







NEO MIOCENE	summary		
	rocks		conglomerate
			tuffaceous sandstone
CRETACEOUS	Dalupirip schist		sandstone, coarse tuff actinolite schist epidote-actinolite schist (82.6 Ma)
	< Intrusive rocks >		
Agno Batholith	Dyke rocks		mega-hornblende andesite porphyry hornblende andesite porphyry (2.37 Ma)
			mega plagioclase bearing andesite porphyry
	Andesite complex		hornblende andesite porphyry, plagioclase andesite porphyry, aphanitic andesite (2.38 Ma)
	Virac granodiorite		hornblende-biotite granodiorite (5.2 Ma)
	Dyke rock		diorite
	Itoyon tonalite		hornblende-biotite tonalite (17.9 Ma)
	Itoyon quartz-diorite		(biotite-) hornblende quartz-diorite (21.7 Ma)
	Antamok diorite		hornblende diorite to hornblende gabbro
			fault

2000

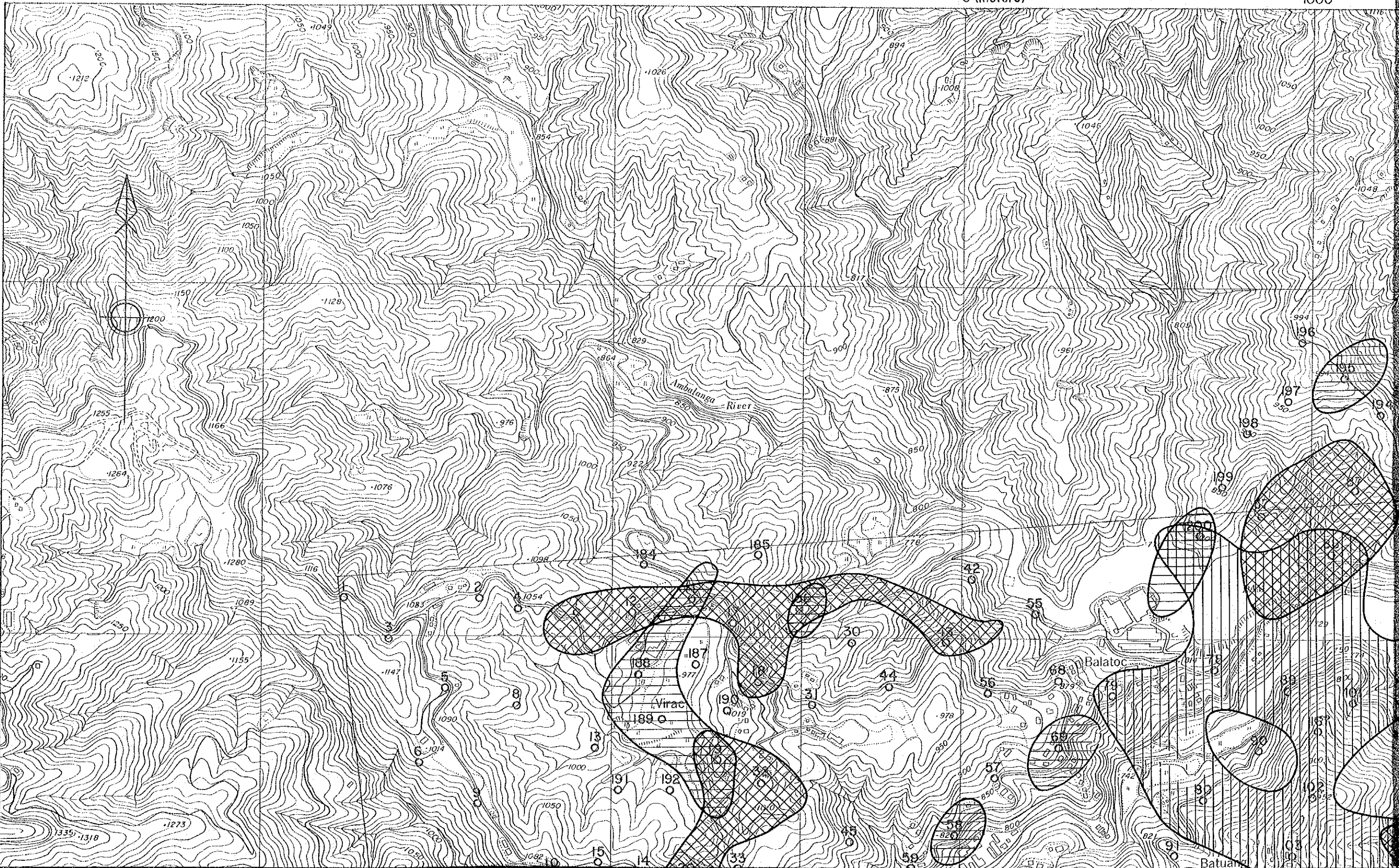
1000

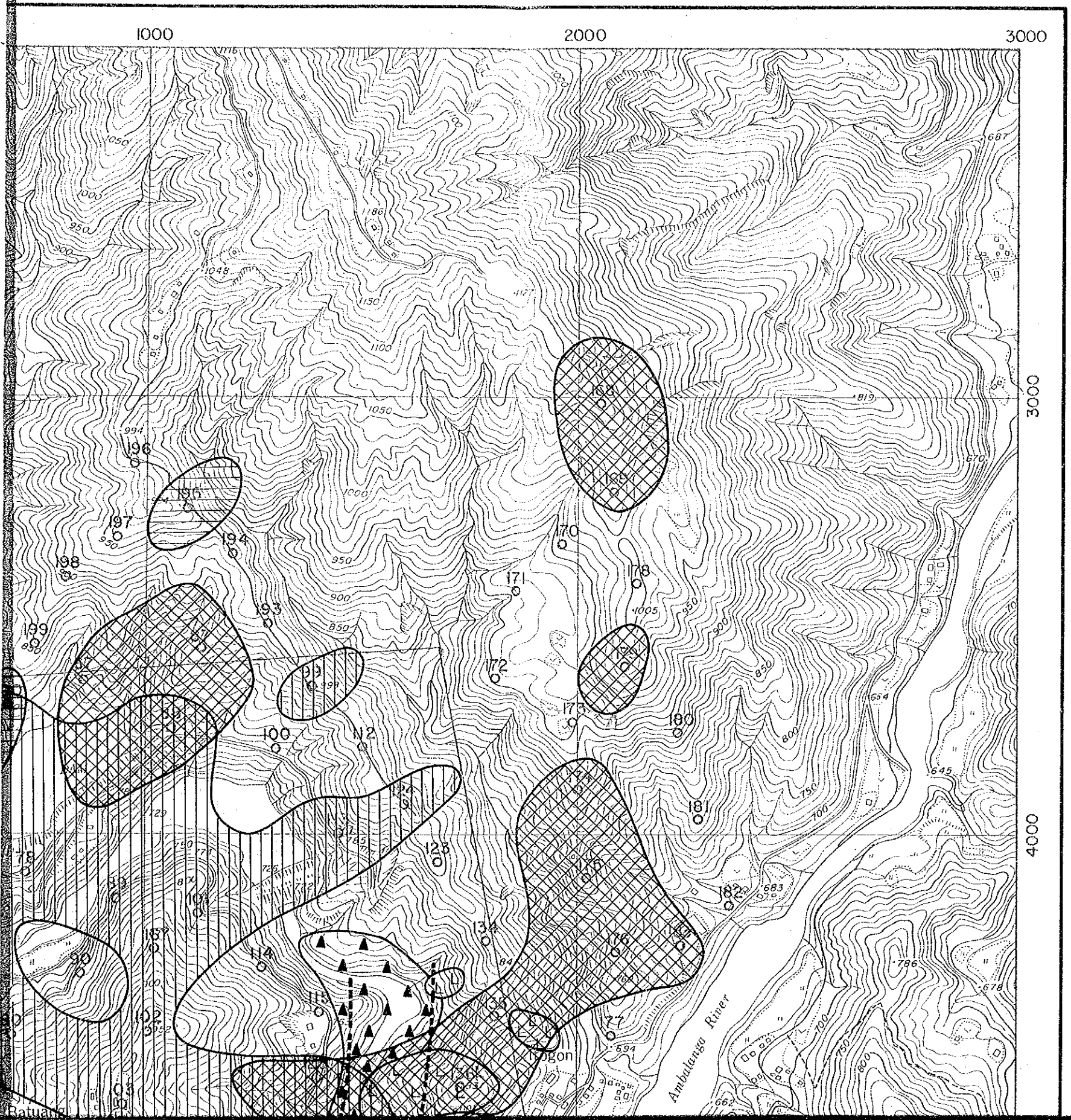
0 (meters)

1000

3000

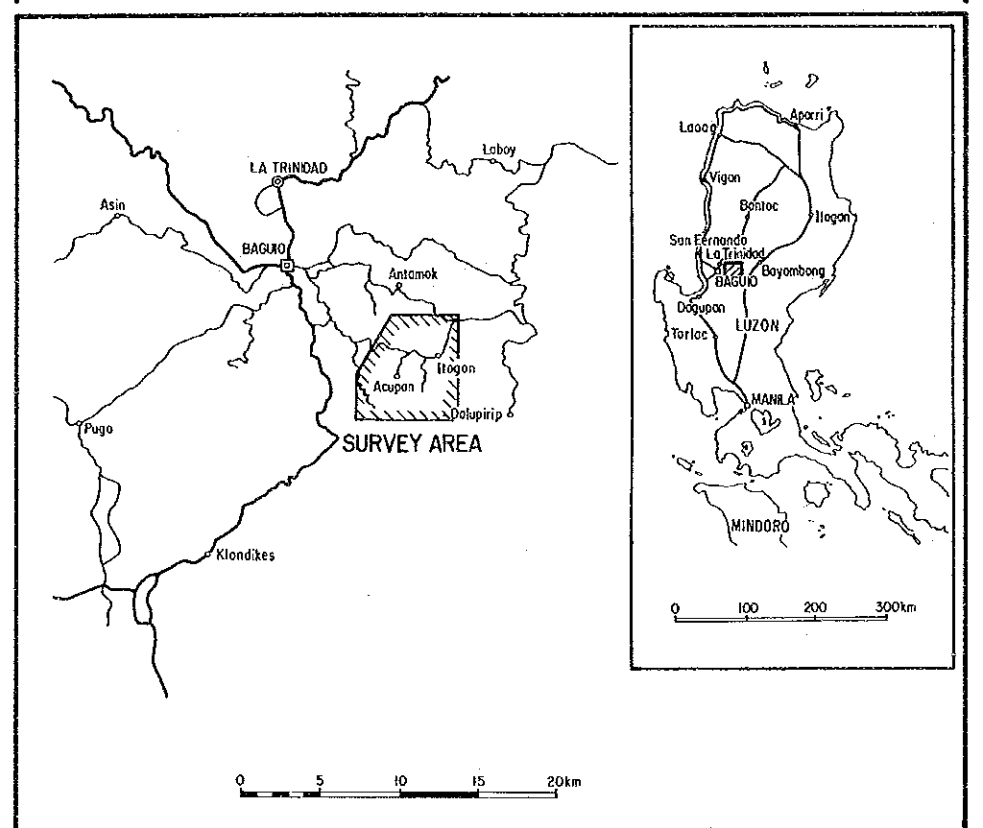
4000



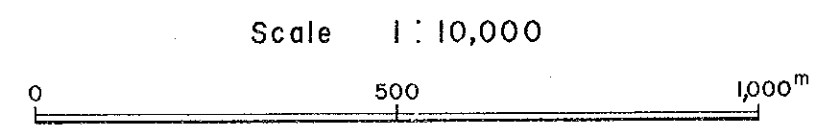


Acupan Itogon Geothermal Development Survey
 the Republic of the Philippines

Fig.III-2-14 Compiled Map of Geochemical Anomalies



Japan International Cooperation Agency

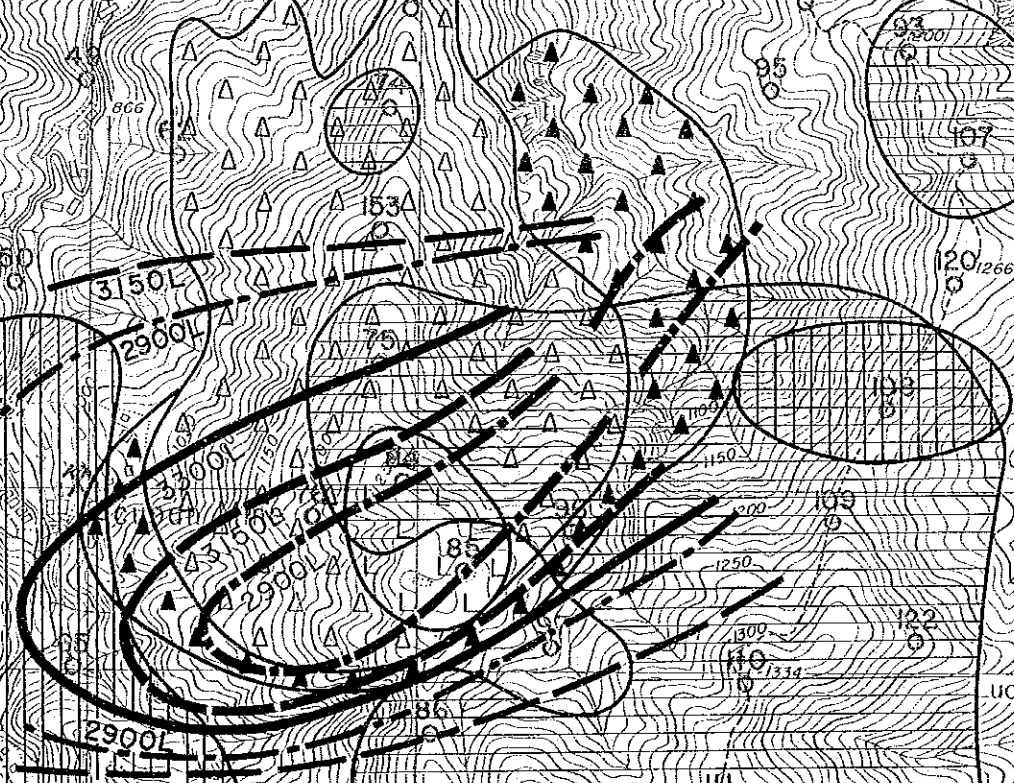
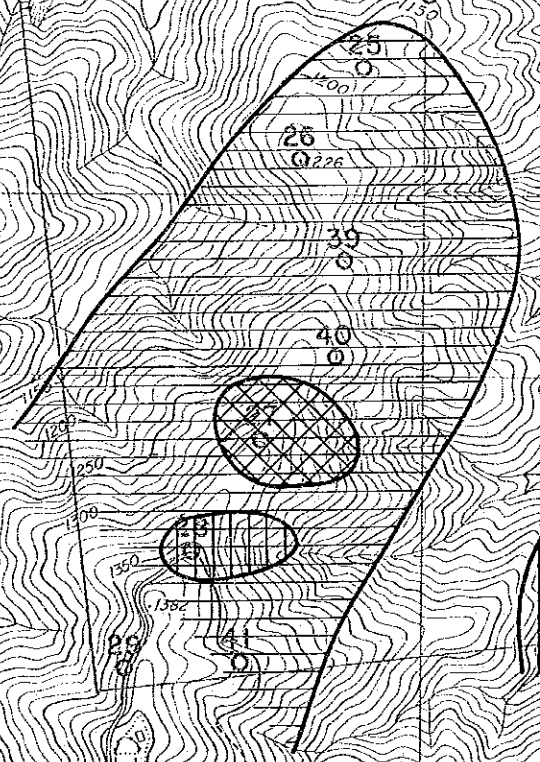


40

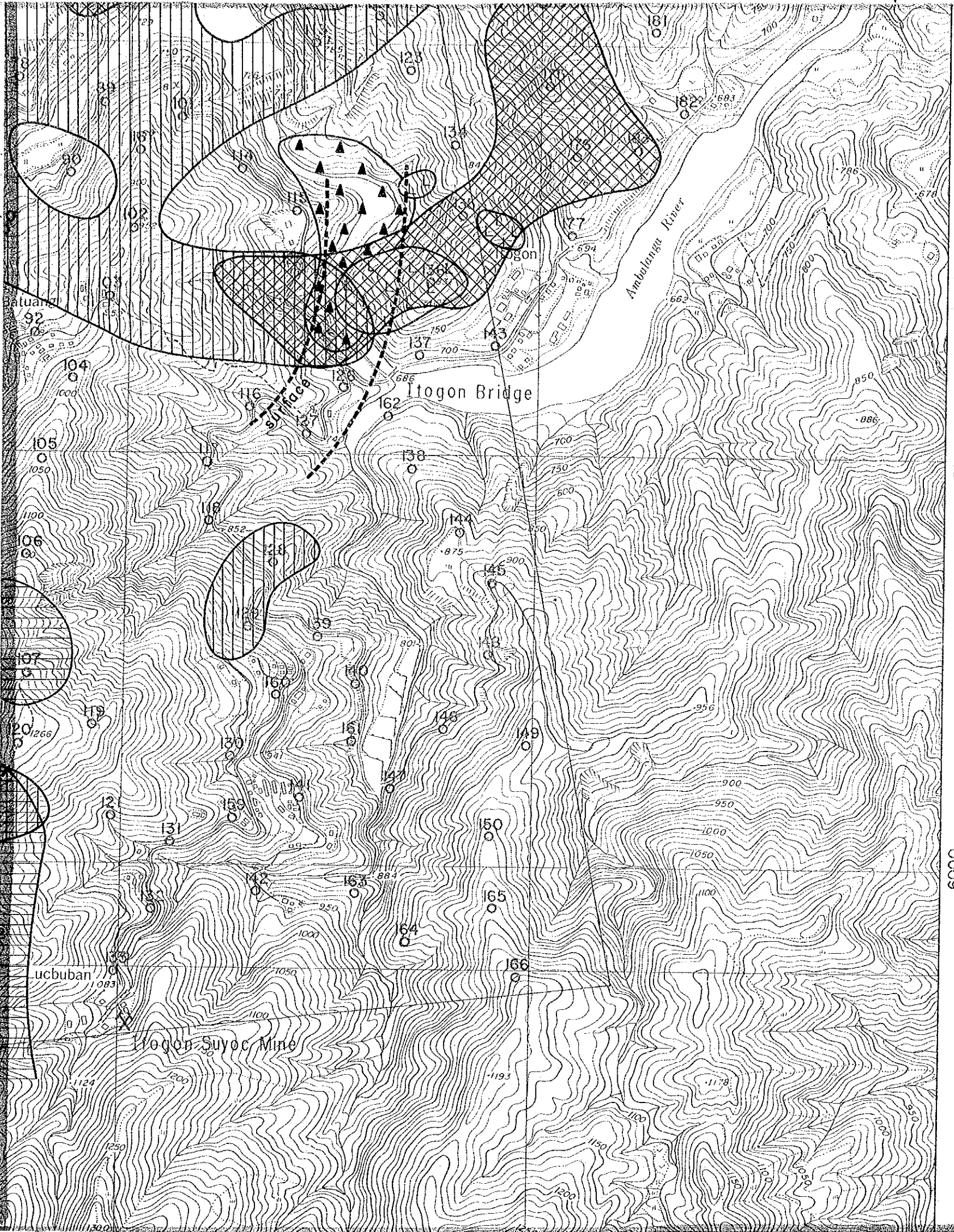
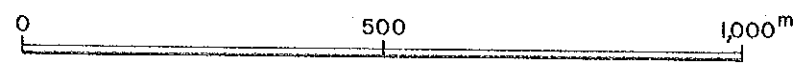
5000

6000

0



Scale 1:10,000



LEGEND

- 12
○ Hole No. Sampling Points
- Temp 27.8°C<
- Hg 478 ppb<
- Rn 90 T/b<
- δ¹⁸O : -8.3<
- δ¹⁸O : -9.7 ≤ < 8.3
- Others δ¹⁸O : < 9.7
- } Plug
- } Plug
- } Plug
- Survey Area

5000

6000

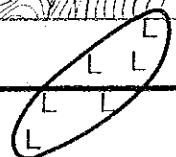
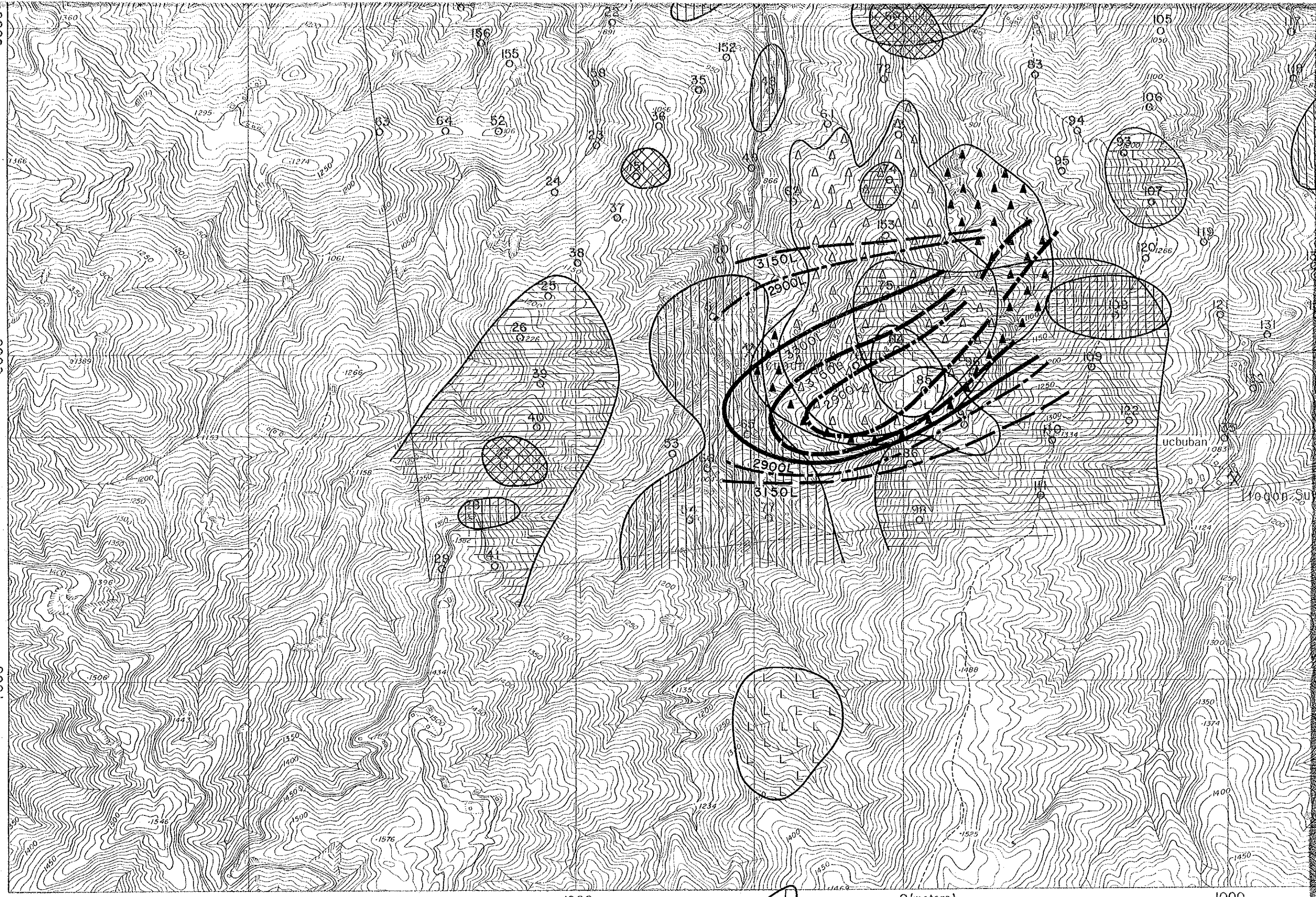
7000

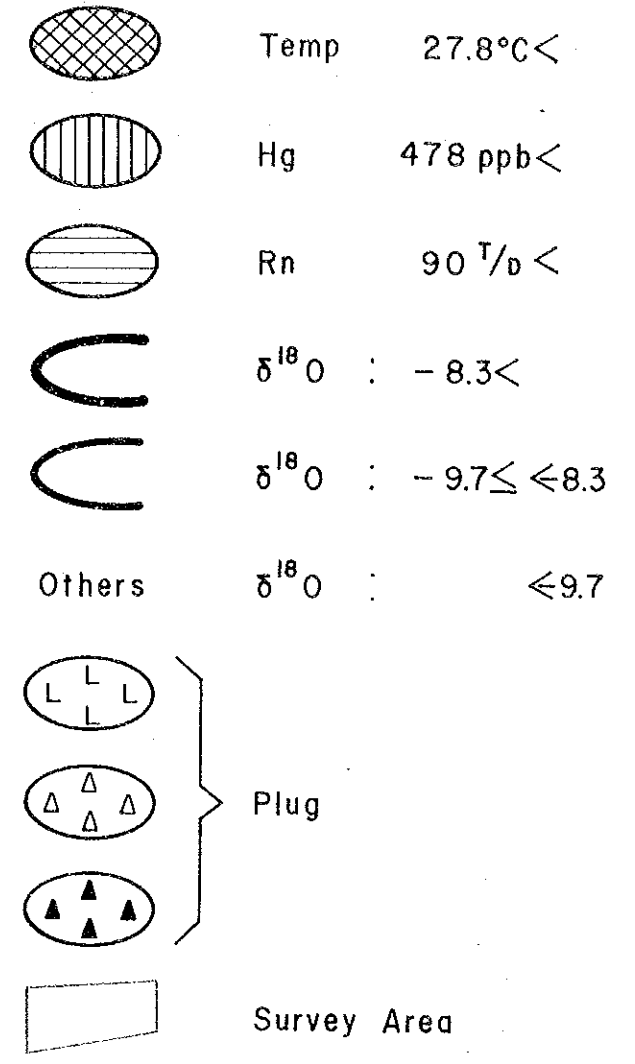
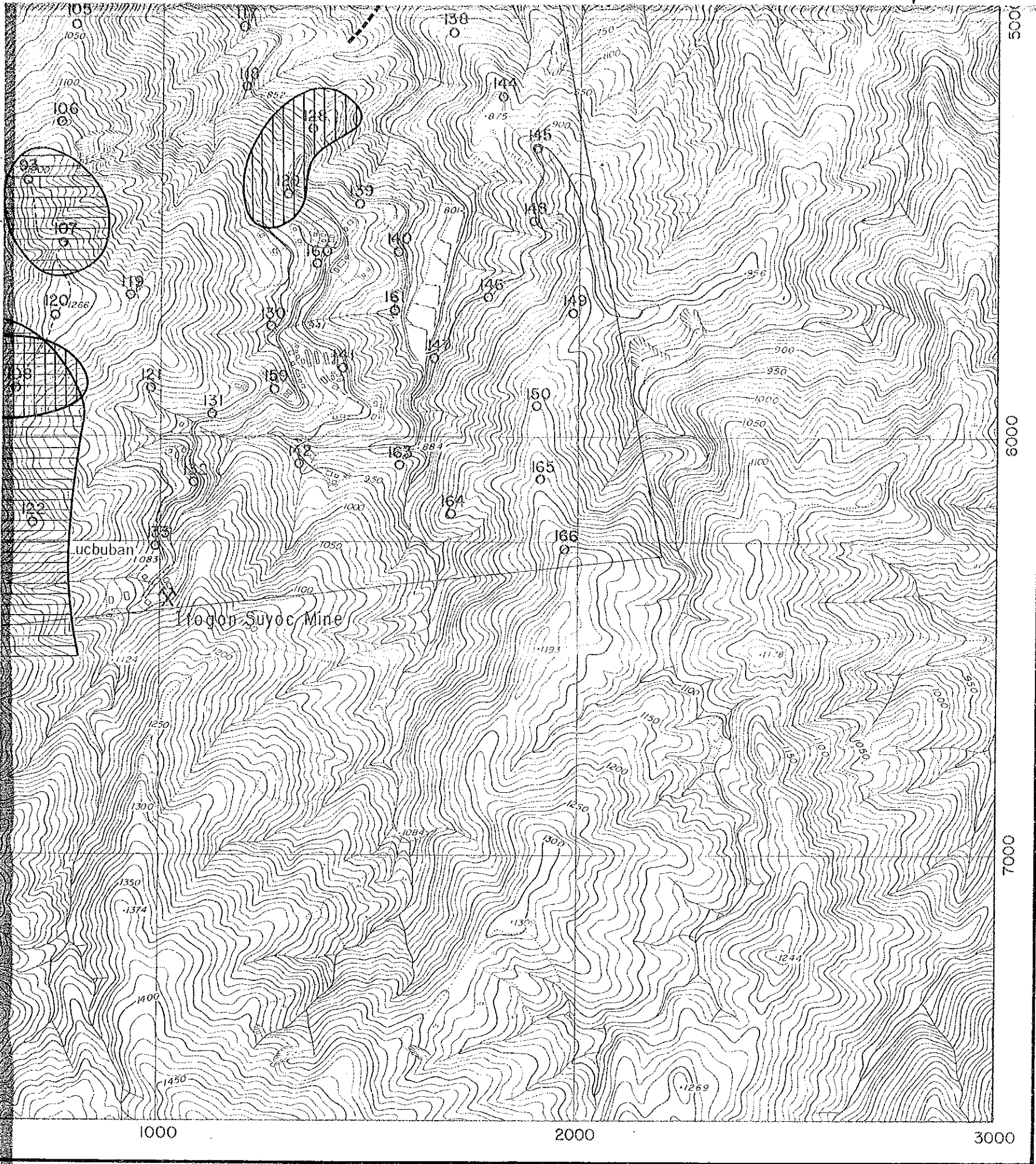
2000

1000

0 (meters)

1000





JICA