

PHILIPPINE SEA

Mineral Showing List

West Side of Northern Sierra Madre				East Side of Northern Sierra Madre			
NO.	Name of Showing	Kind of Ore	Grade	NO.	Name of Showing	Kind of Ore	Grade
1	Duho Creek	Epithermal Vein	D	1	Cas Chromite Wascayan 1	Ortho Magmatic	B
2	Dina Creek	Veinlet Dissemination	B	2	Cas Chromite Wascayan 2	Ortho Magmatic	C
3	Dawagao	Placer	B	3	Dinastawal	Strata bond Mn and sulfide	C
4	Deamay River	Placer	D	4	Dinapijal	Epithermal Vein	D
5	Ilogan River	Veinlet Dissemination	D	5	Dinatoto	Epithermal Vein	D
6	Oldan River	Veinlet Dissemination	D	6	Dinawit	Strata bond Mn	D
7	Pilig Creek	Mn. Placer	D	7	Kanlapan Hill	Weathering Residual	D
8	Isabela	Veinlet Dissemination	E	8	Dikopitan	Ortho Magmatic	D
9	Sigat	Veinlet Dissemination	E	9	Ditadocan	Strata bond Mn	C
10	Ilogan	Veinlet Dissemination	D	10	Chad	Epithermal Vein	D
11	Manama	Veinlet Dissemination	D	11	Dudanan	Epithermal Vein	D
12	Casibangan	Veinlet Dissemination	C	12	Dibantog	Ortho Magmatic	B
13	Dinastawal	Veinlet Dissemination	C	13	Blocban	Strata bond Sulfide	B
14	Casibangan III	Veinlet Dissemination	C	14	Lacan	Strata bond Sulfide	B
15	Casibangan	Layed keratite	D	15	Bla's River	Epithermal Vein	D

**Evaluation Grade**  
 B: High Necessity for following survey  
 C: Possibility of following survey is reliable  
 D: Low Necessity for following survey  
 E: Needless for following survey

**Promising Area List**  
 I Around Dinastawal of Pilig Creek Showings  
 II Around Baciban Showing

LEGEND

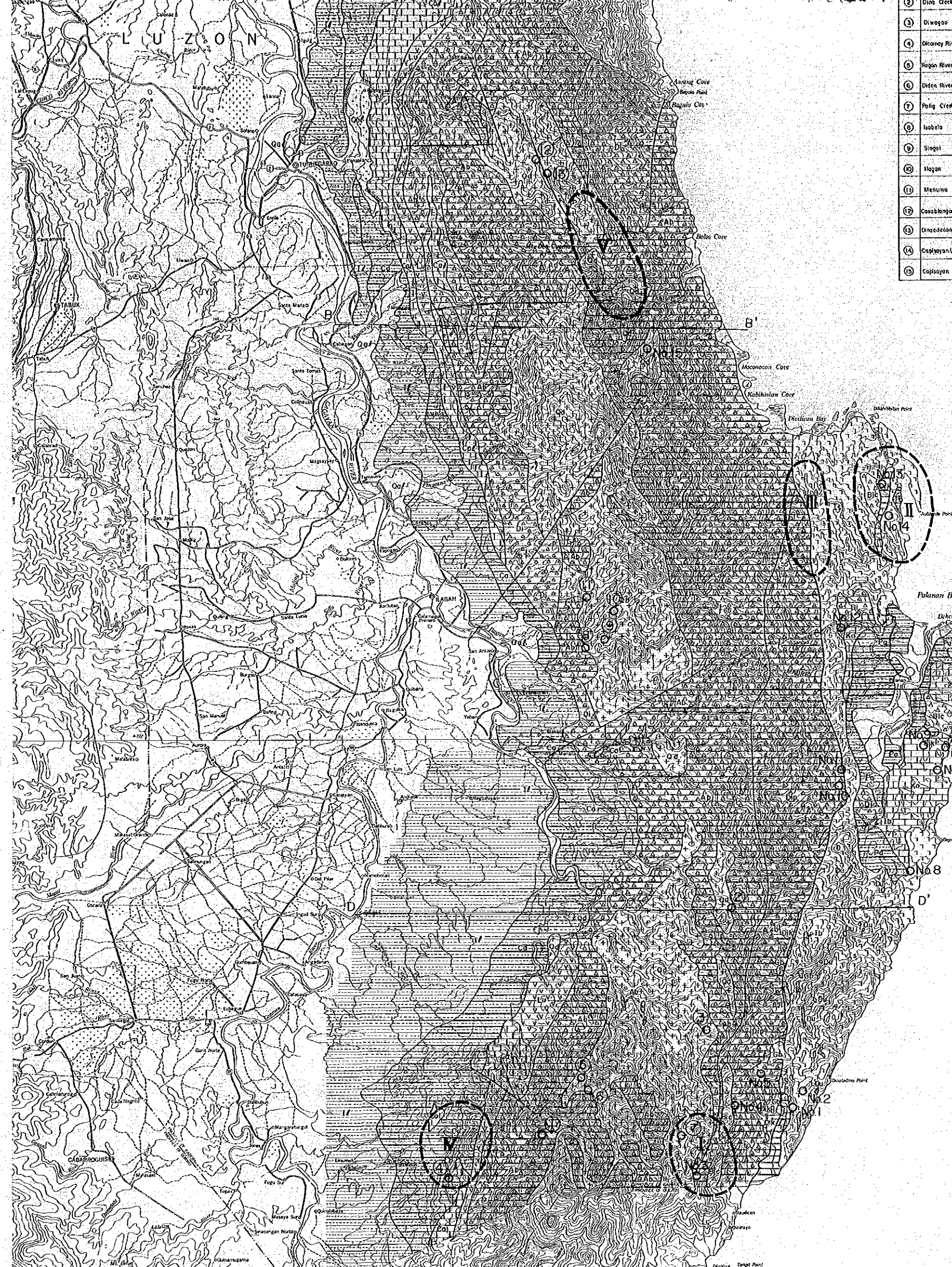
**Geologic Symbols**

	Grabel Sand Soil		Kanlapan Limestone
	Ilogan Formation		Palanan Sediments
	Cabagan Formation		Libao Limestone
	Colao Limestone		Quartz Diorite (Intrusive body)
	Lubogon Formation		Mt. Cresta Formation
	Obusan Formation		Masibi River Formation
	Abuan River Formation		Dipodian River Formation
	Dikimaron River Chert		Baciban Basalt
	Isabela Ultramafic Complex (Massive gabbro) (Gb)		Isabela Ultramafic Complex (Rhyolite Peridotite with lenses of dunite) (Lu1)

**Geologic Symbols**

	Fault		Anticline Axis
	Dip. Strike		Syncline Axis
	Mineral Showing		Promising Area

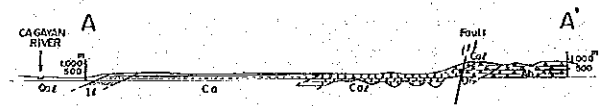
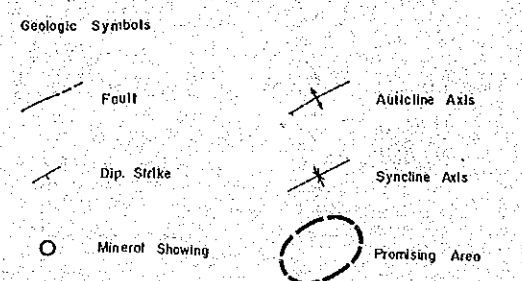


2	Davao Creek	Dissemination	D	2	Wosoyon 2	Ortho gneiss	C
3	Diwago	Placer	B	3	Dinakawa	Strata bond Unoxid sulfide	C
4	Dikaway River	Placer	D	4	Dinapiya	Epithermal Vln	D
5	Hagan River	Veinlet Dissemination	D	5	Omatato	Epithermal Vln	D
6	Diden River	Veinlet Dissemination	D	6	Disawit	Strata bond Mn	C
7	Palg Creek	Mn. Placer Epithermal Vln	D	7	Ranipon Hill	Weathering Residual	D
8	Isabela	Veinlet Dissemination	E	8	Dikapiyan	Ortho Magmatic	D
9	Sigal	Veinlet Dissemination	E	9	Dikadapan	Strata bond Mn	C
10	Hagan	Veinlet Dissemination	D	10	Cwed	Epithermal Vln	D
11	Manuna	Veinlet Dissemination	D	11	Dikadapan	Epithermal Vln	D
12	Corablangan	Veinlet Dissemination	C	12	Dibabang	Ortho Magmatic	B
13	Dinacalan	Veinlet Dissemination	C	13	Dicablan	Strata bond Sulfide	B
14	Cagayan III	Veinlet Dissemination	C	14	Loosan	Strata bond Sulfide	B
15	Copogan	Lavae Imoxite	D	15	Dlos River	Epithermal Vln	D

**Evaluation Grade**  
 B: High Necessity for following survey  
 C: Possibility of following survey is reliable  
 D: Low Necessity for following survey  
 E: Needless for following survey

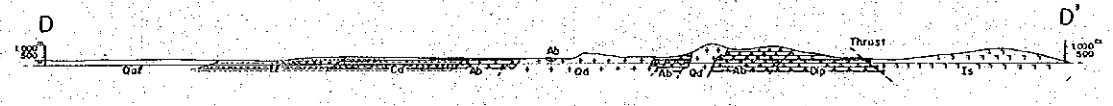
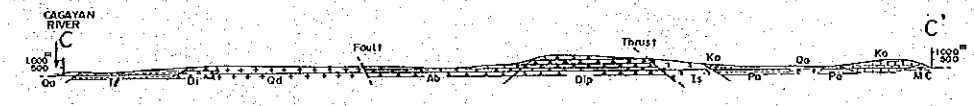
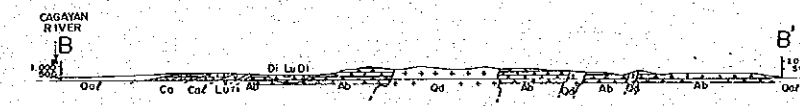
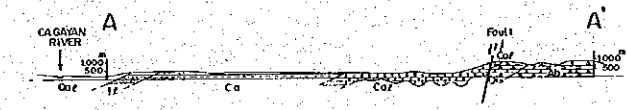
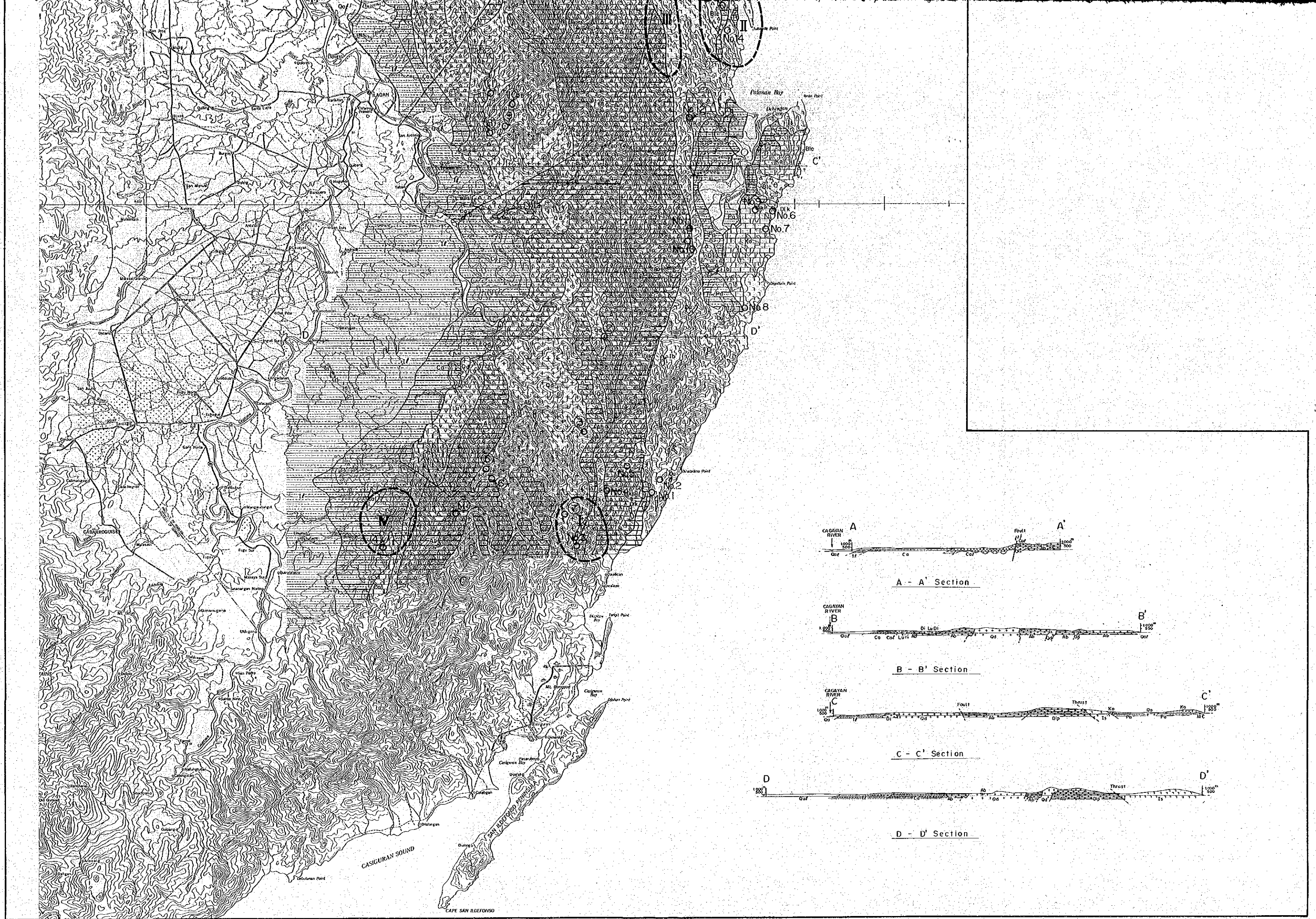
**Promising Area List**  
 I Around Dinakawa of Palg Creek Showings  
 II Around Dicablan Showing  
 III Cr, Ni Anomaly Along the Fault  
 IV Cu, Zn, As, Hg, Anomaly 7Km NE of Minel  
 V Cu, Pb, Zn, As, Mo, Anomaly 10Km W of Bata Cove (East Coast)

Miocene	Calico Limestone	Ibukao Limestone	Quartz Diorite (Intrusive body)
Tertiary	Libogon Formation		
Oligocene	Obayan Formation		
Eocene	Mt. Cresta Formation	Masibi River Formation	
Paleocene	Abuyan River Formation	Dipodan River Formation	
	Diknomanan River Chert		
	Beoblan Basalt		
Mesozoic	Isabela Ultramafic Complex (Massive Gabbro) (G <sub>1</sub> )	Isabela Ultramafic Complex (Hyroxene Peridotite with lenses of dunite) (L <sub>1</sub> )	



A - A' Section

B'





JICA