

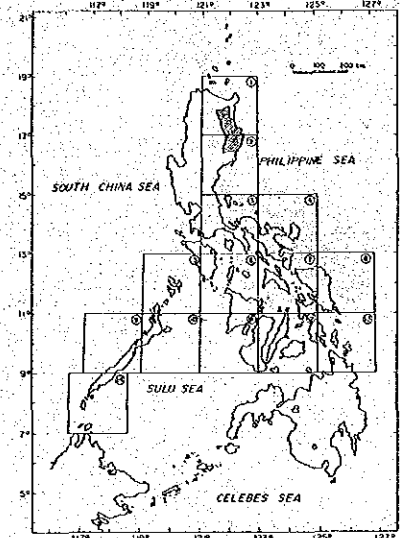


フィリピン共和国
鉱物資源基本図調査

16318
国書資料室蔵書

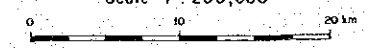
第3年次

北部シエラマドレ地区
鉱徴地及び調査有望地位置図



昭和62年2月
国際協力事業団
金属鉱業事業団

Scale 1 : 250,000



PHILIPPINE SEA

Mineral Showing List

West Side of Northern Sierra Madre			East Side of Northern Sierra Madre				
NO.	Name of Showing	Kind of Ore	Grade	NO.	Name of Showing	Kind of Ore	Grade
1	Duado Creek	Epithermal Vein	D	1	Cas Chrome Wacayan 1	Ortho Magmatic	B
2	Oino Creek	Veinlet Dissemination	B	2	Cas Chrome Wacayan 2	Ortho Magmatic	C
3	Diwagan	Placer	B	3	Dinakawal	Strata bond Mn and sulfide	C
4	Dicamay River	Placer	D	4	Dinapigul	Epithermal Vein	D
5	Ilogan River	Veinlet Dissemination	D	5	Danatalra	Epithermal Vein	D
6	Diken River	Veinlet Dissemination	D	6	Ditawit	Strata bond Mn	D
7	Pully Creek	Mn Placer	D	7	Kanapan Hill	Weathering Residual	D
8	Isabela	Veinlet Dissemination	E	8	Danapisan	Ortho Magmatic	D
9	Silagan	Veinlet Dissemination	E	9	Ditadsoon	Strata bond Mn	C
10	Ilogan	Veinlet Dissemination	D	10	Chad	Epithermal Vein	D
11	Manuma	Veinlet Dissemination	D	11	Dudewan	Epithermal Vein	D
12	Casabangan	Veinlet Dissemination	C	12	Dibenteng	Ortho Magmatic	B
13	Onocodon	Veinlet Dissemination	C	13	Bicobian	Strata bond Sulfide	B
14	Cappayan II	Veinlet Dissemination	C	14	Lozon	Strata bond Sulfide	B
15	Cappayan	Layed Emoxite	D	15	Bles River	Epithermal Vein	D

Evolution Grade

- B: High Necessity for following survey
- C: Possibility of following survey is reliable
- D: Low Necessity for following survey
- E: Needless for following survey

Promising Area List

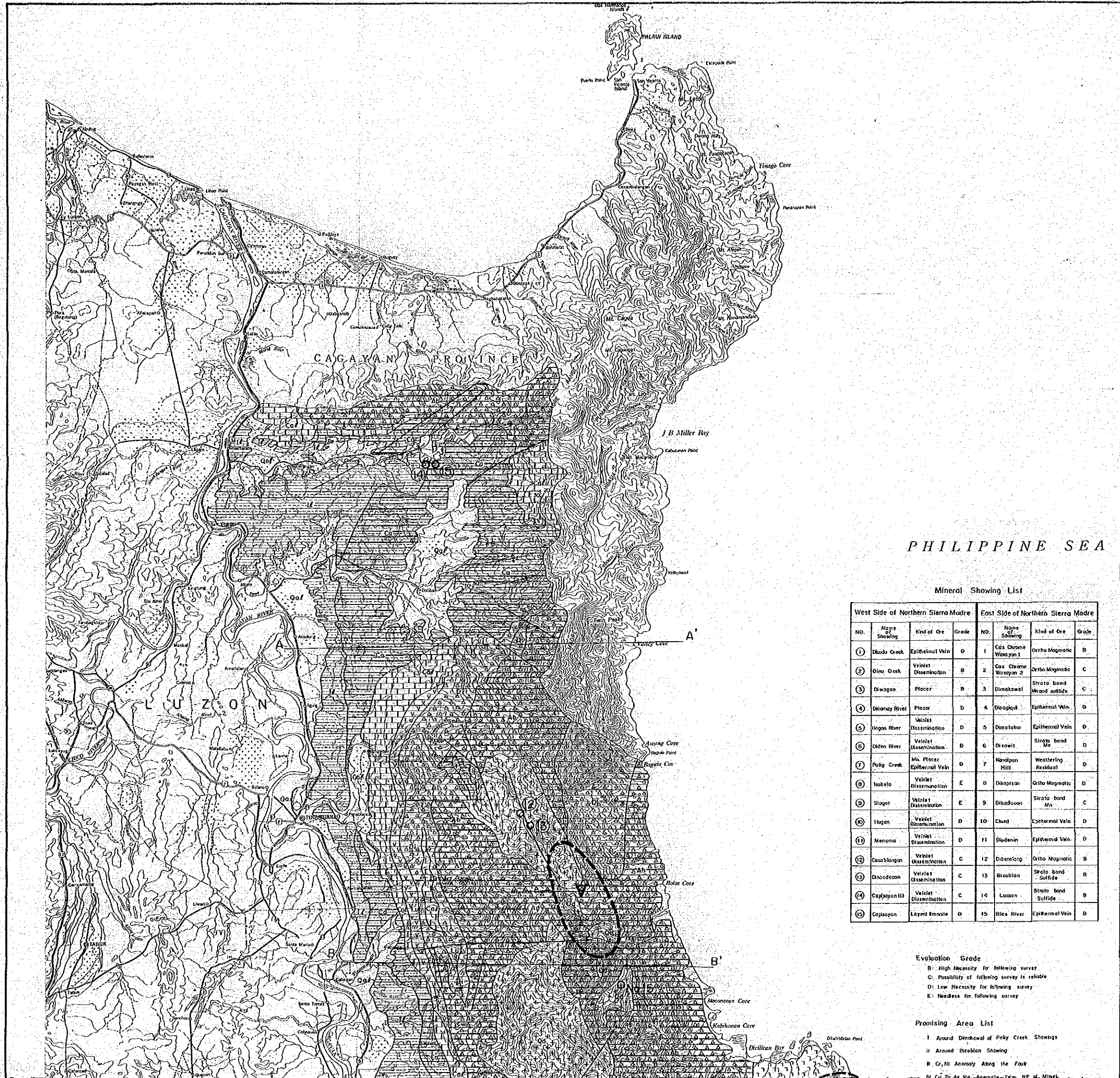
- I Around Dinakawal of Pully Creek Showings
- II Around Bicobian Showing
- B, C, N1 Anomaly Along the Fault
- N, Cu, Zn, Al, Mn, Ag, As, Bi, Co, Cr, Ni, Pb, Sn, U, V, W, Zn

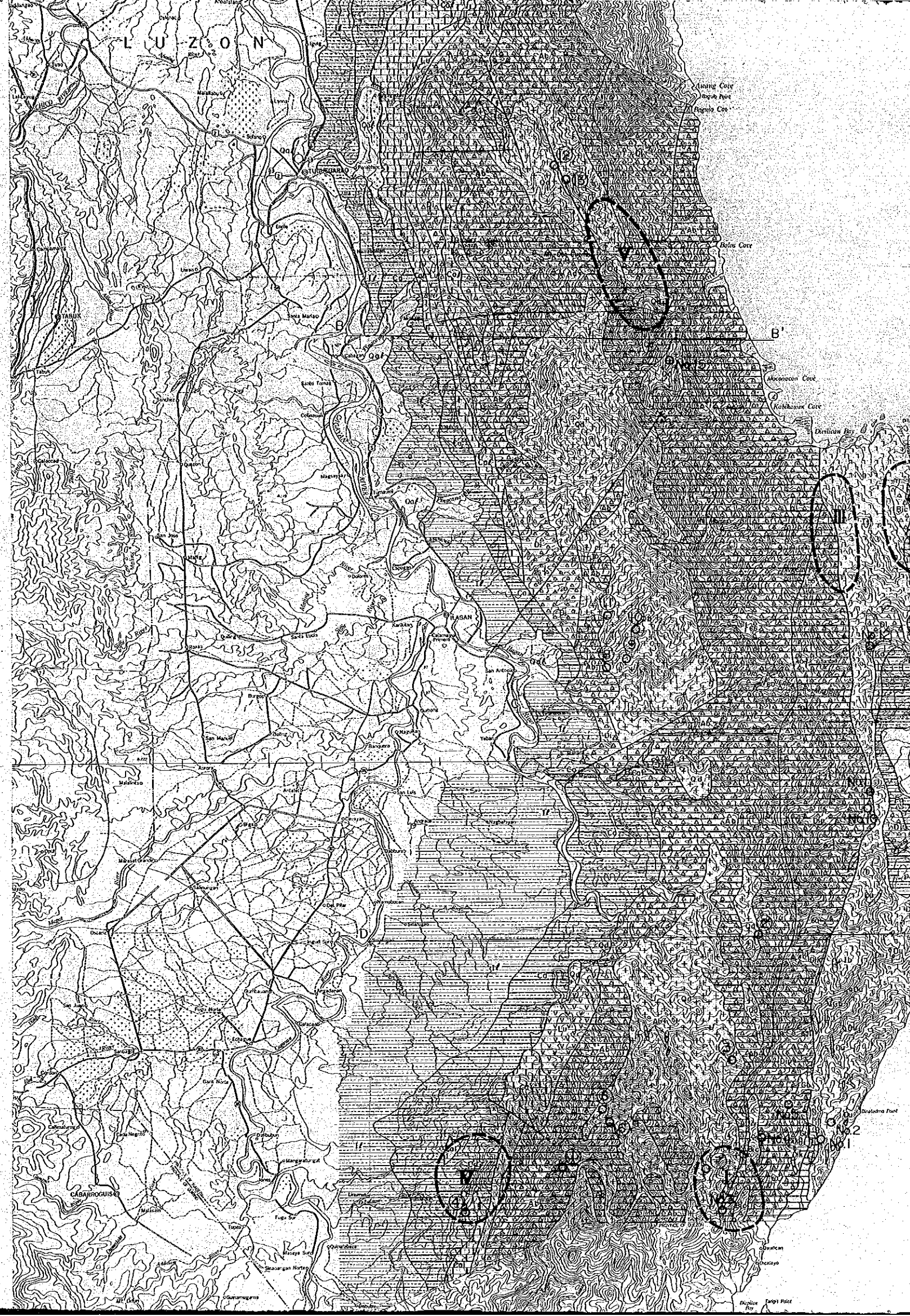
LEGEND

	Qal	Gravel Sand Soil		Ka1	Koralpong Limestone
Holocene		Ilogan Formation	Tertiary		Palanan Sediments
		Cabagan Formation			Ibulao Limestone
Pliocene		Calico Limestone	Oligocene		Dublan Formation
		Libugan Formation			Quartz Diorite (Intrusive body)
Miocene			Eocene		Mt. Cresta Formation
					Masibi River Formation
Tertiary			Paleocene		Abuon River Formation
					Dipodan River Formation
Oligocene					Dikinamaran River Char
					Etobian Basalt
Eocene			Mesozoic		Isabela Ultramafic Complex (Massive Gabbro)
					Isabela Ultramafic Complex (Rhyolite Peridotite with lenses of dunite) (L, U)

Geologic Symbols

- Fault
- Dip. Strike
- Mineral Showing
- Anticline Axis
- Syncline Axis
- Promising Area



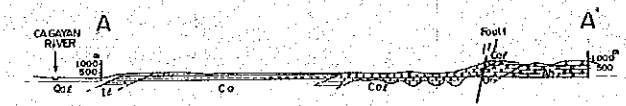
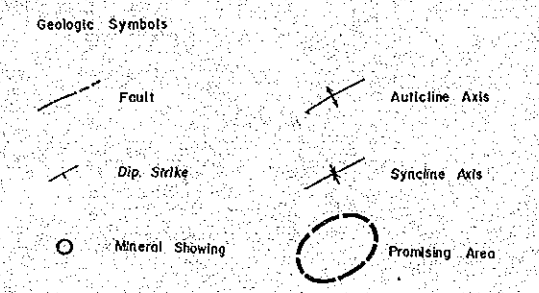


No.	Location	Geological Unit	Grade	No.	Location	Geological Unit	Grade
1	Dina Creek	Dissimination	E	11	Wasson 2	Slate band	C
2	Dinagoo	Placer	B	12	Dinakawai	Epithermal Vhn	D
3	Dinagay River	Placer	D	13	Dinapiga	Epithermal Vhn	D
4	Ilogan River	Veinlet Dissemination	D	14	Dinalano	Epithermal Vhn	D
5	Diden River	Veinlet Dissemination	D	15	Dicawit	Slate band	D
6	Paly Creek	Mt. Placer Epithermal Vhn	D	16	Nadapan Hill	Weathering residual	D
7	Ithela	Veinlet Dissemination	E	17	Dapitan	Ortho Magmatic	D
8	Siguel	Veinlet Dissemination	E	18	Dinadaban	Slate band	C
9	Ilogan	Veinlet Dissemination	D	19	Cwad	Epithermal Vhn	D
10	Manama	Veinlet Dissemination	D	20	Duduan	Epithermal Vhn	D
11	Casabangan	Veinlet Dissemination	C	21	Dibabang	Ortho Magmatic	B
12	Dinadaban	Veinlet Dissemination	C	22	Bicoblan	Slate band	B
13	Casigayen II	Veinlet Dissemination	C	23	Locson	Slate band	B
14	Casigayen I	Layed Inverte	D	24	Blos River	Epithermal Vhn	D

Period	Formation	Formation
Miocene	Calico Limestone	Ibukla Limestone
Tertiary	Lubagan Formation	Quartz Diorite (Intrusive body)
Oligocene	Obujan Formation	
Eocene	Mt. Cresta Formation	Masibi River Formation
Paleocene	Abuan River Formation	Dipadan River Formation
	Dikhanaran River Chert	
	Basoban Basalt	
Mesozoic	Isabela Ultramafic Complex (Massive Gabbro) (G6)	Isabela Ultramafic Complex (Pyroxene Peridotite with lenses of dunite) (L-1)

Evaluation Grade
 B: High necessity for following survey
 C: Possibility of following survey is reliable
 D: Low necessity for following survey
 E: Needless for following survey

Promising Area List
 I: Around Dinakawai of Paly Creek Showings
 II: Around Bicoblan Showing
 III: Cr, Ni Anomaly Along the Fault
 IV: Cu, Zn, As, Hg, Anomaly 7Km NE of Mirari
 V: Cu, Pb, Zn, As, Mo, Anomaly 10Km W of Bolos Cove (East Coast)



CASAYAN RIVER

B' 1:1000

