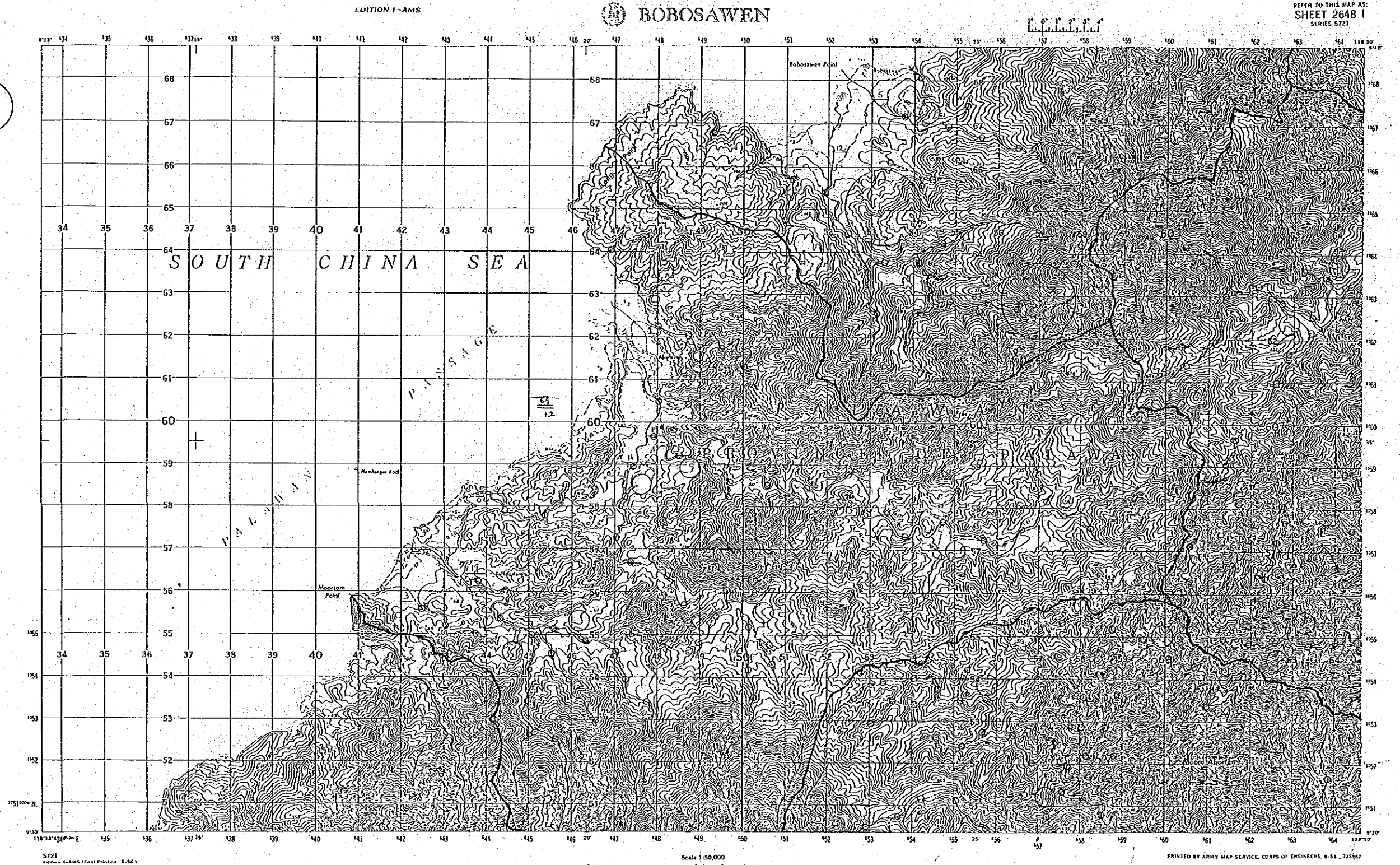
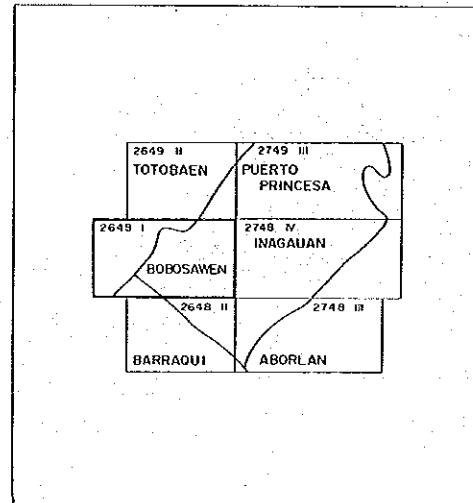


付図 10-28

パラワン III 地区  
サンプル採取予定位置図

1/50,000

国陸協力事業団  
15163  
図書資料室蔵書



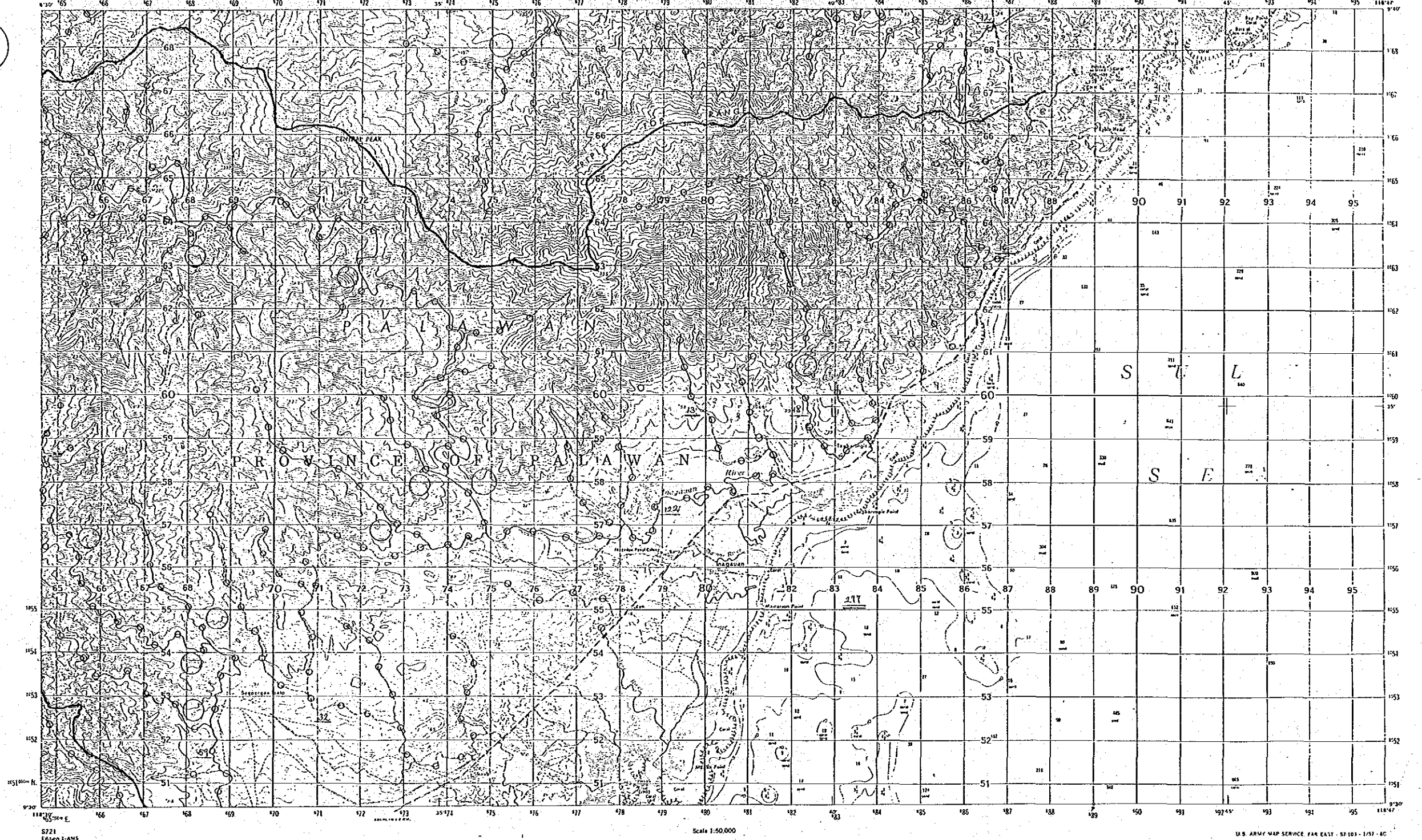
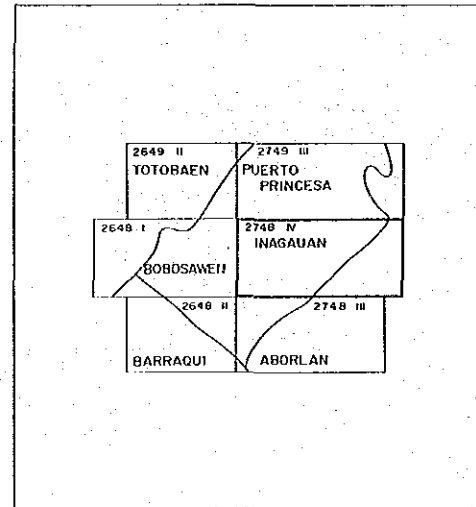
# INAGAUAN

REFER TO THIS MAP AS:  
SHEET 2748 IV  
SERIES 5721

パラワン III 地区  
サンプル採取予定位置図

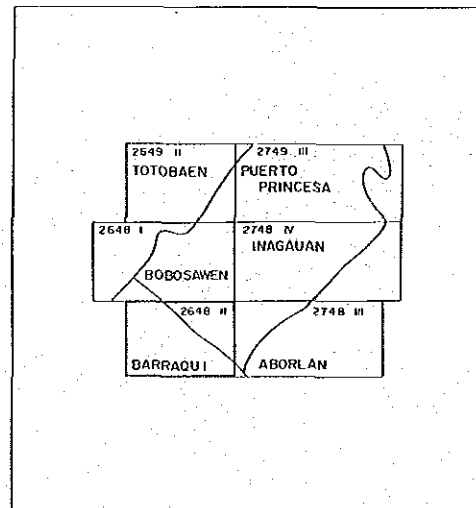
国際協力事業団  
15163  
図書資料室蔵書

1/50,000



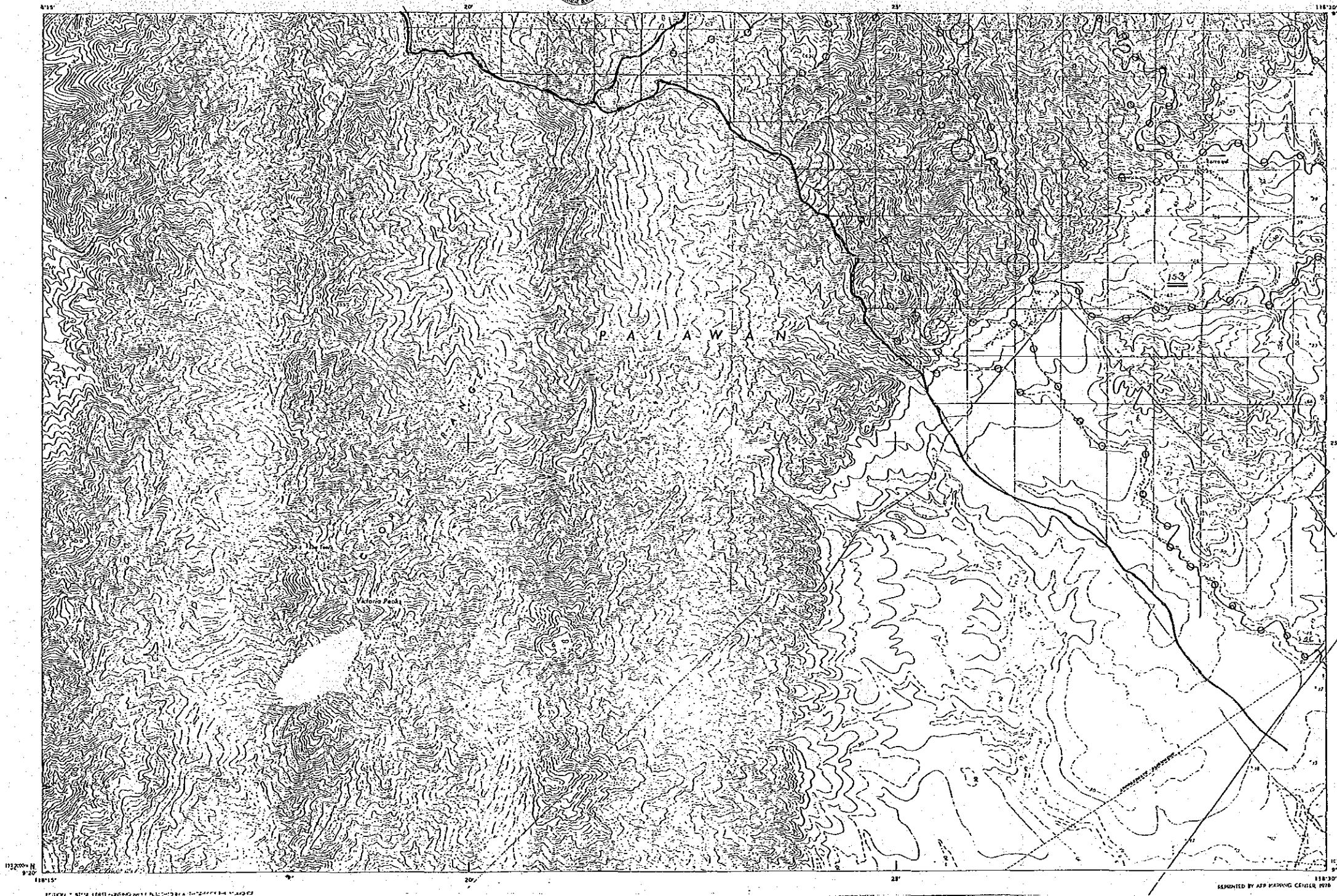
パラワン III 地区  
サンプル採取予定位置図

1 / 50,000



BARRAQUI

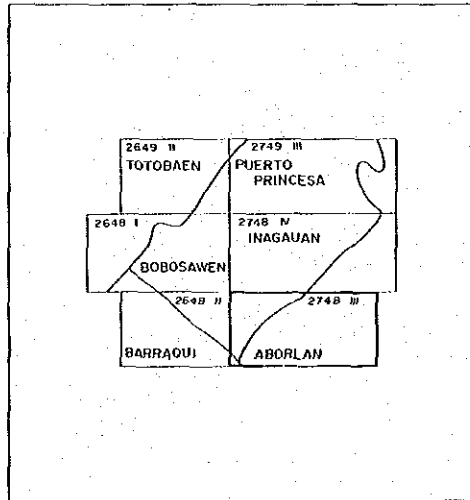
SHEET 2648 II



パラワン III 地区  
サンプル採取予定位置図

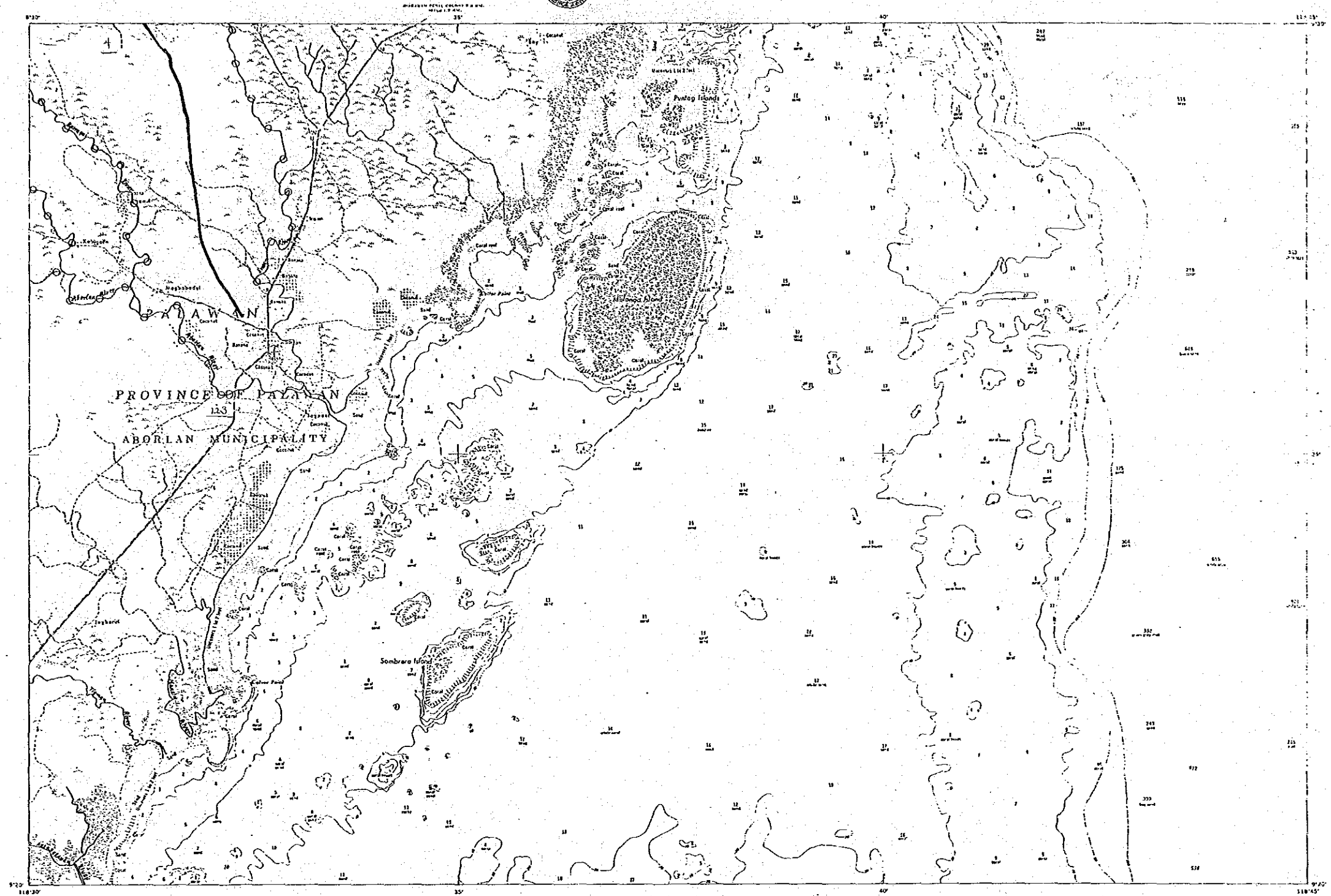
1/50,000

国際協力事業団  
15163  
図書資料室蔵



ABORLAN

SHEET 2748 III

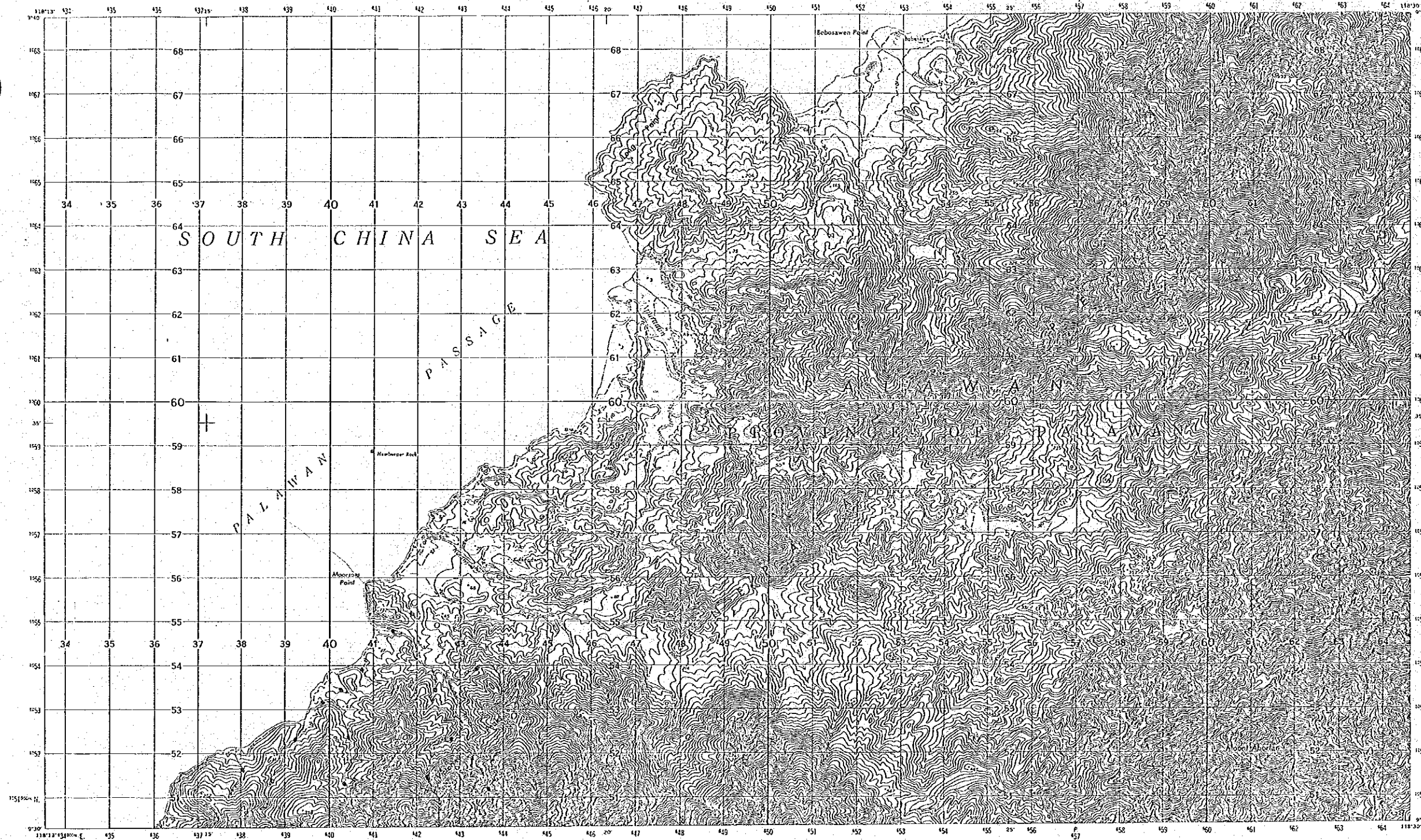
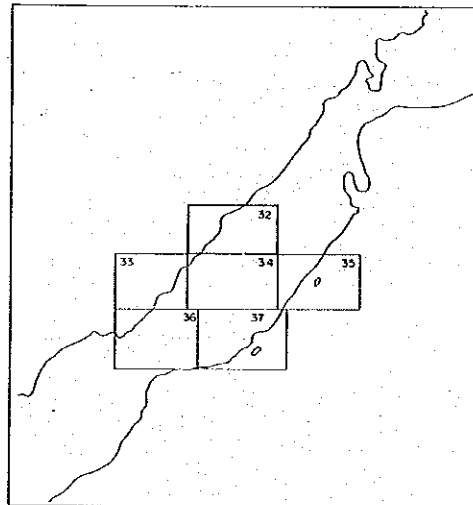


付図. 10-32

パラワン IV 地区  
サンプル採取予定位置図

1 / 50,000

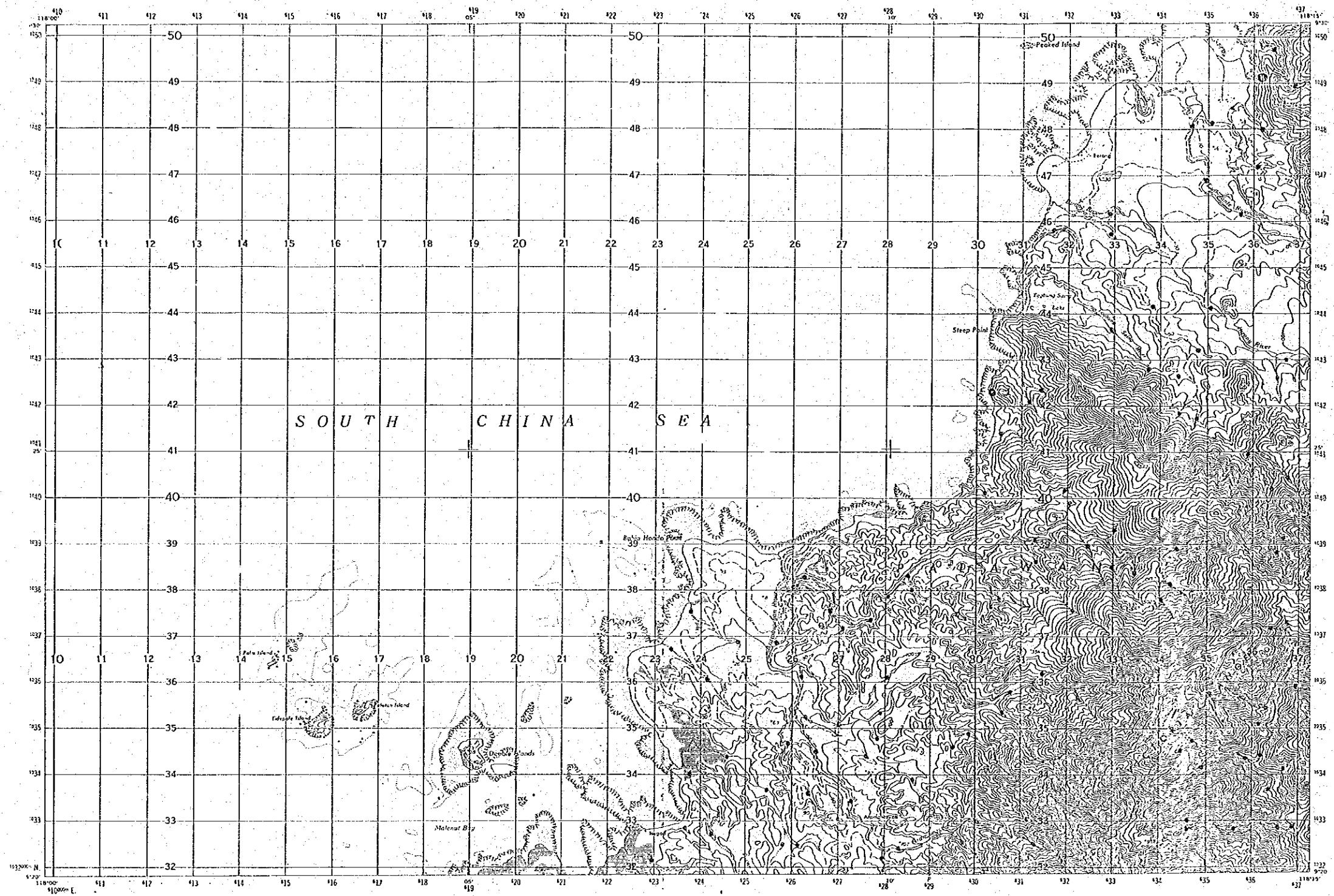
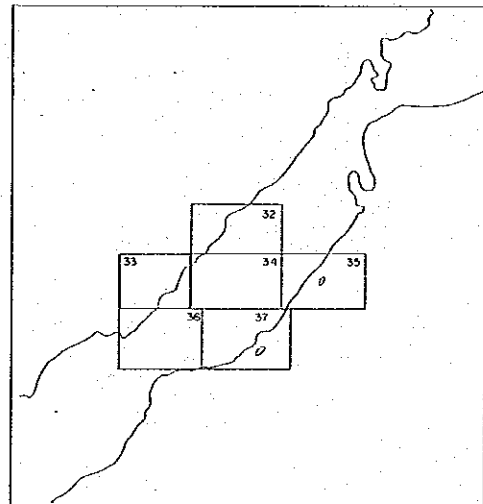
国際協力事業団  
15163  
図書資料室蔵書



付図.10-33

パラワン IV 地区  
サンプル採取予定位置図

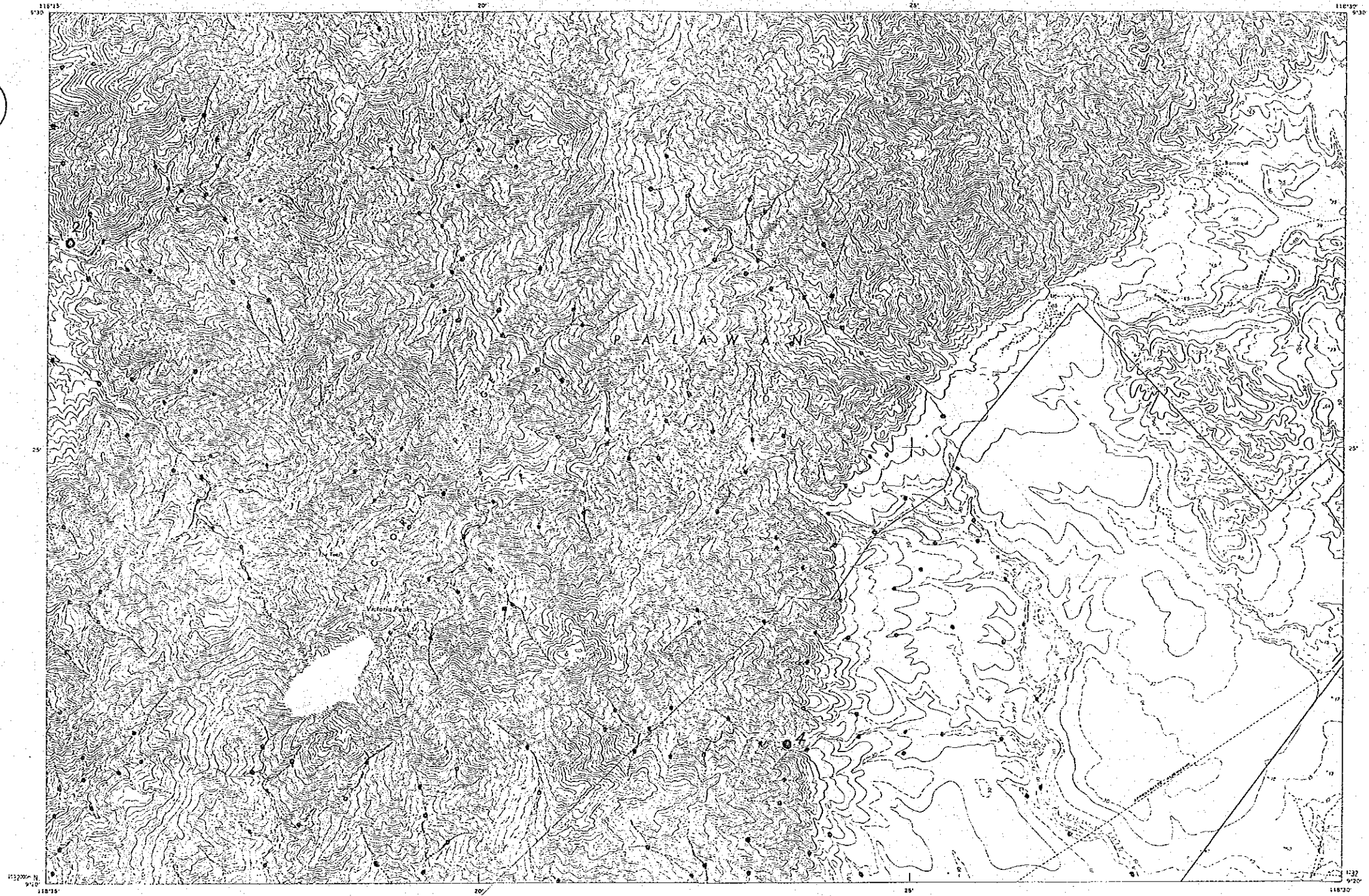
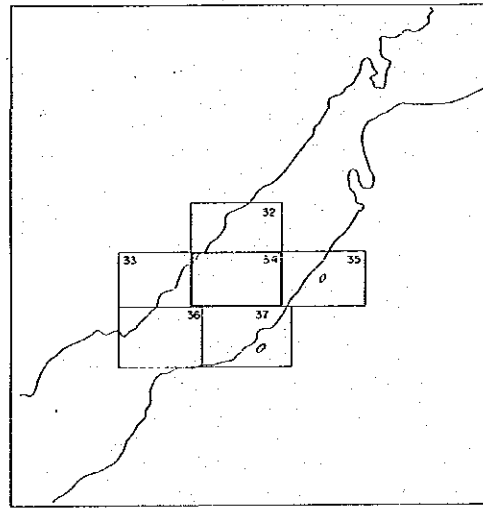
1 / 50,000



付図.10-34

パラワン IV 地区  
サンプル採取予定位置図

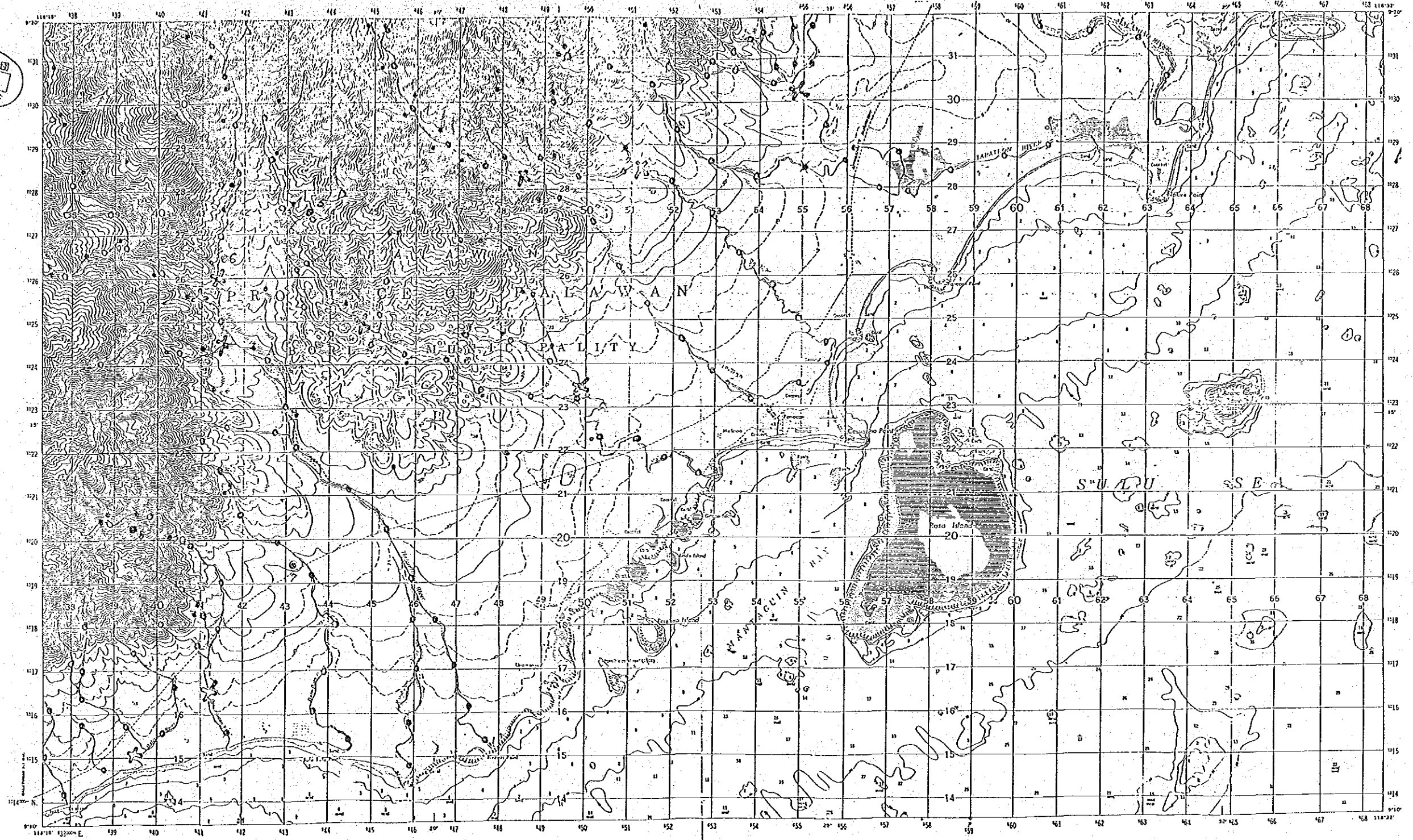
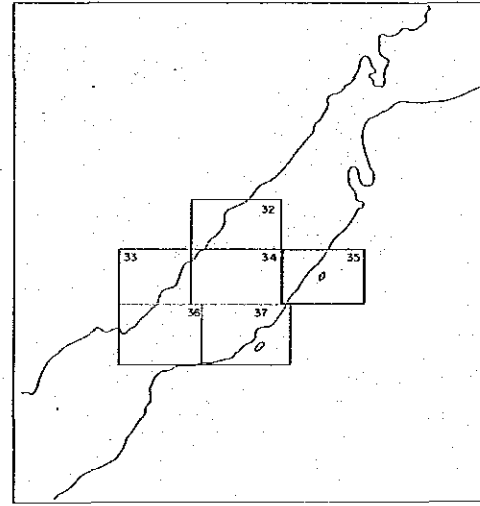
1 / 50,000



パラワン IV 地区  
サンプル採取予定位置図

1 / 50,000

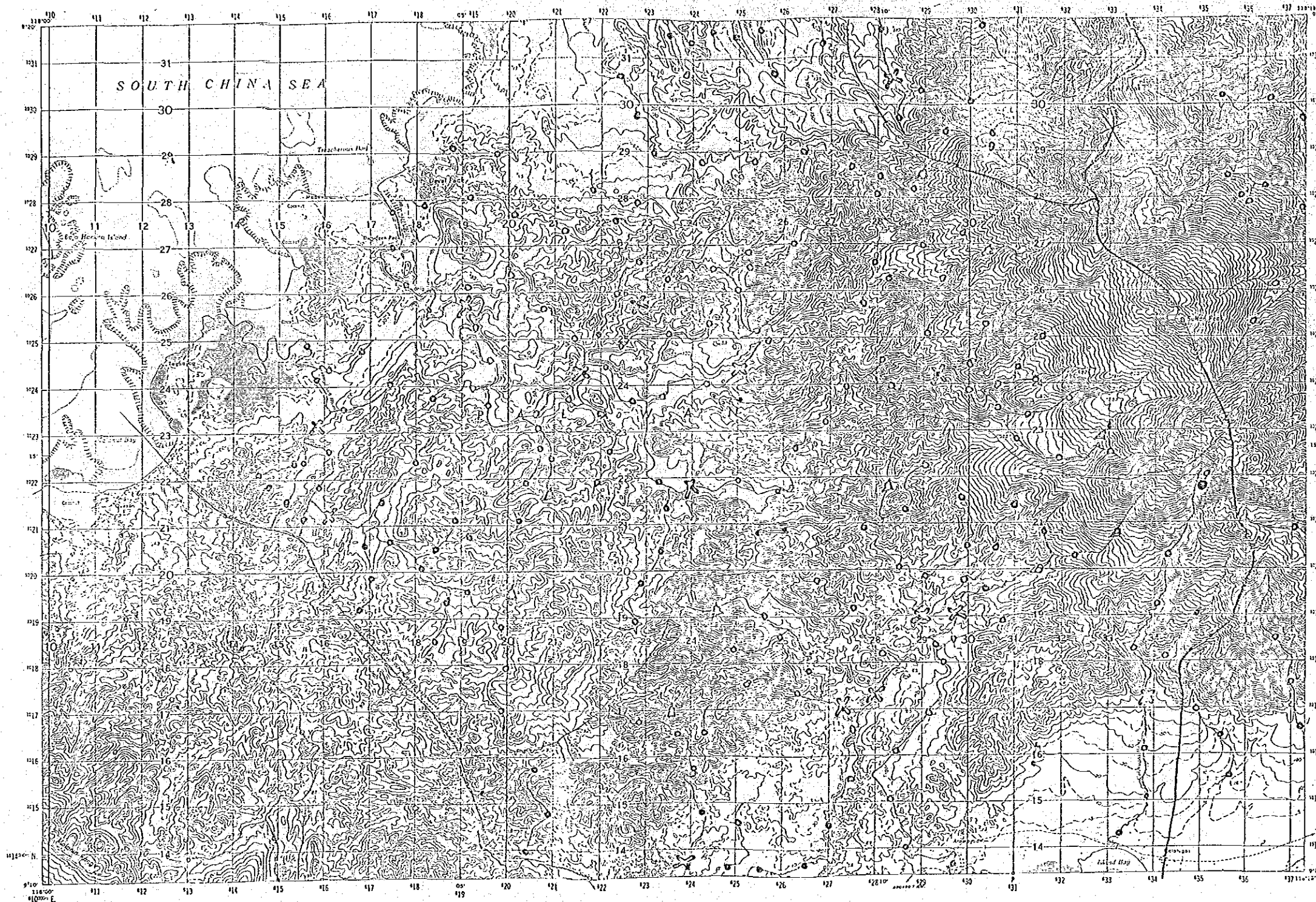
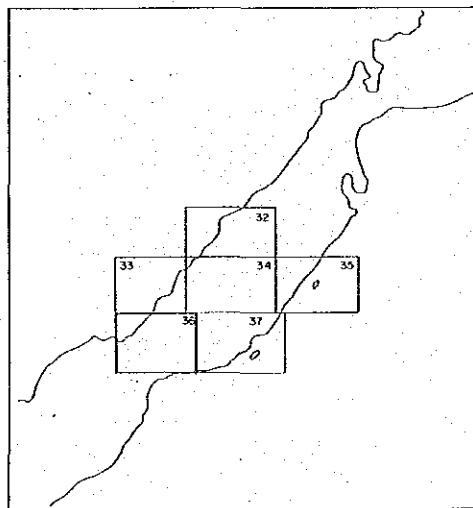
国際協力事業団  
15163  
図書資料室蔵書





パラワン IV 地区  
サンプル採取予定位置図

1 / 50,000

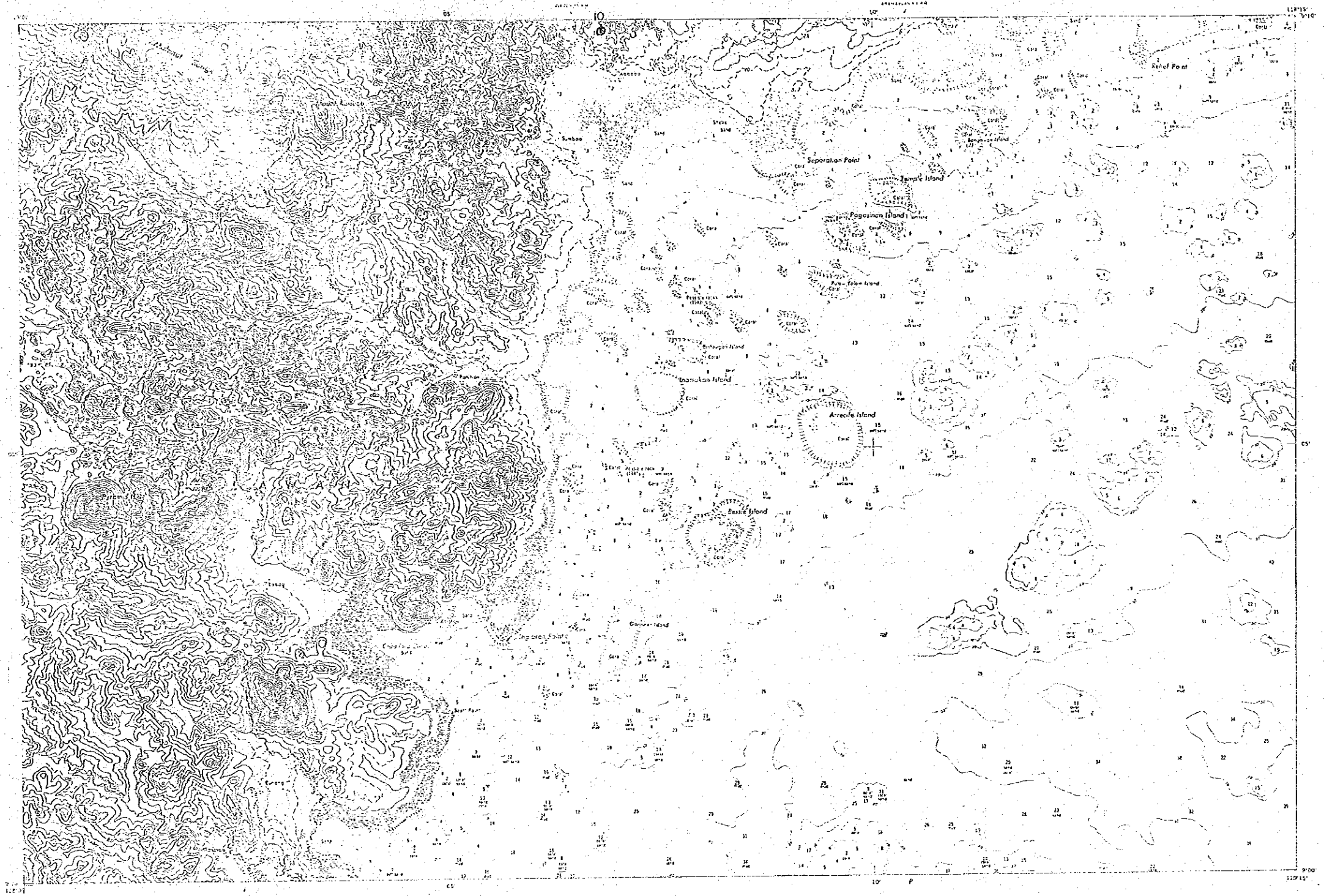
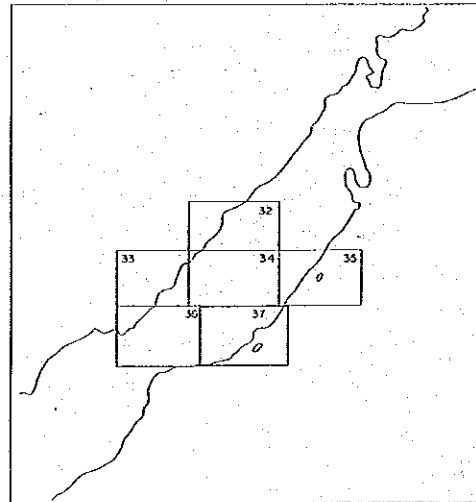


付図.10-37

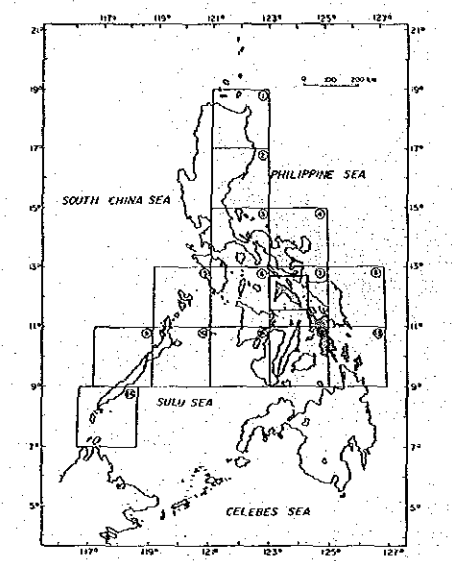
パラワン IV 地区  
サンプル採取予定位置図

国際協力事業団  
15163  
図書資料産蔵書

1 / 50,000



フィリピン共和国  
鉱物資源基本図調査  
第2年次  
マスバテ地区  
鉱徴地及び調査有望地位置図



昭和61年3月  
国際協力事業団  
金属鉱業事業団

Scale 1 : 250,000

LEGEND

Sediments		Intrusives		
Quaternary	Holocene	Qa1	Recent River and Coastal Deposits, Coral Reef.	
		NOSz	Unconsolidated Tuffaceous Sand and Silt.	
Pleistocene		NOSu	Conglomeratic Fossiliferous and Loose Sponge-like Limestone.	
		NLz	Andesitic Lava and Tuffbreccia.	And
		NLz	Folous and Fossiliferous Limestone.	
Pliocene		NLz	Conglomerate, Sandstone, Siltstone.	
		NLz	Alternation of Mudstone, Siltstone, Sandstone and Conglomerate.	
Miocene		RPz	Meta-andesitic Volcanics with flow Breccia.	
		RPz	Meta-basaltic Volcanics with flow Breccia.	
Oligocene		KPz	Meta-sediments (Slate, Shale, Sandstone, Siltstone etc.)	
		KPz	Recrystalline Limestone.	
Cretaceous				

7 ● Mineral Showing

II Promising Area

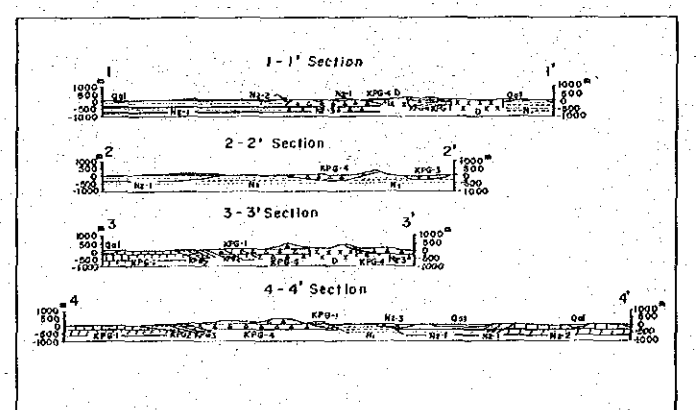
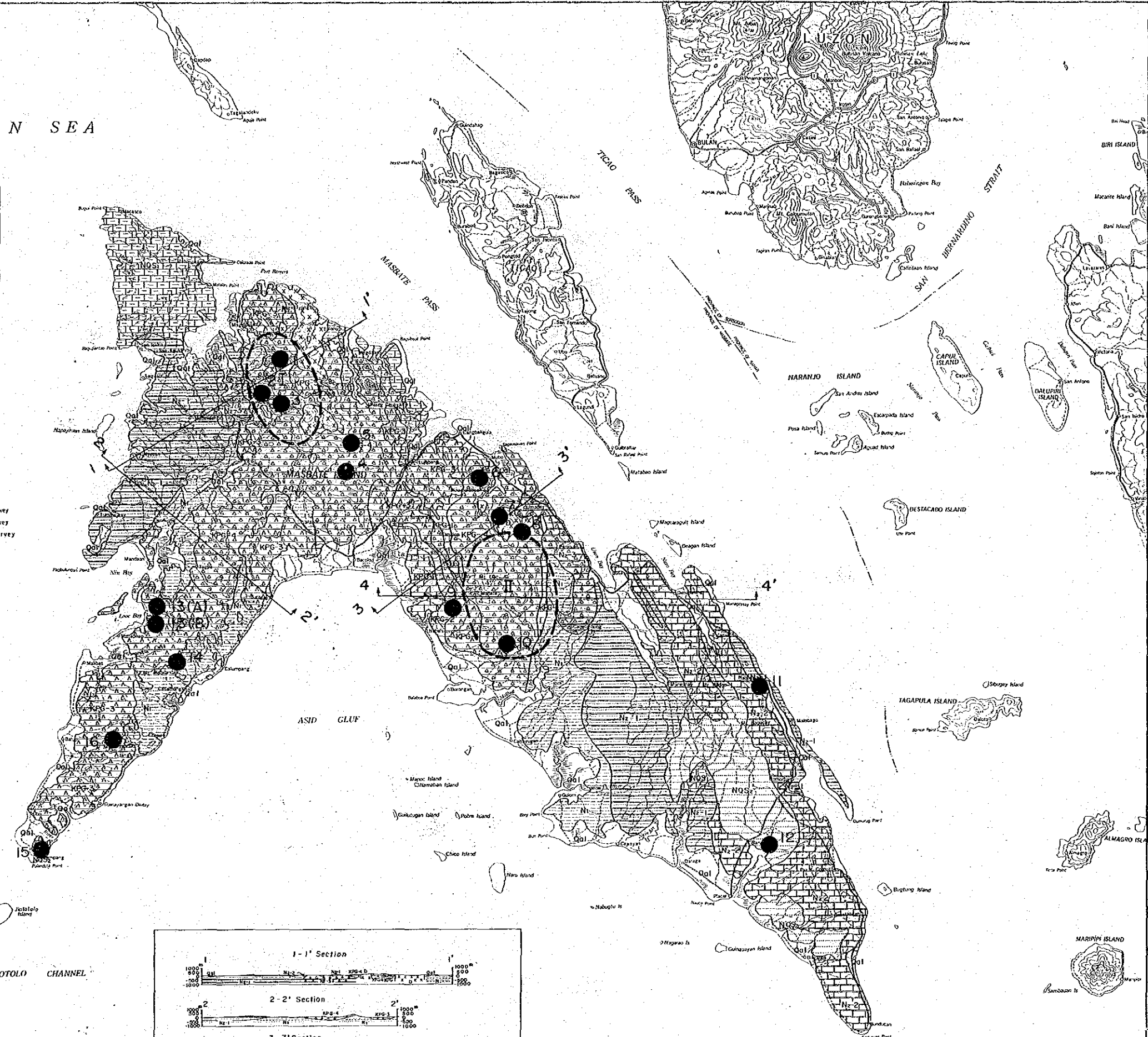
SIBUYAN SEA

Mineral Showing List

NO	Name of Showing	Kind of Ore	Grade
1	Capsay	Gold-bearing siliceous Au	D
2	Luyo	"	D
3	Conception	"	C
4	Motanglad	Epithermal vein Cu	D
5	X.Y.Z	(Au)	D
6	Mandole	Network Vein	C
7	Boang	Vein type disseminated	E
8	Morintoc	Hydrothermal vein type deposit	C
9	Mt. Uac	Vein deposit Au	D
10	Dogangan	Hydrothermal vein type deposit	B
11	Nabangic	Sedimentary Mn deposit	E
12	Placer	Unknown	
13A	Ayot	Sedimentary manganese deposit	E
13B	Ayot	"	E
14	Taison	"	E
15	Columbang	"	E
16	Bolud	"	E

Evaluation Grade  
 B: High necessary for following survey  
 C: Having room for following survey  
 D: Low necessary for following survey  
 E: Needless for following survey

Promising Area List  
 I Around Arroy mine Area  
 II Around Mt. Uac Area.



AN SEA

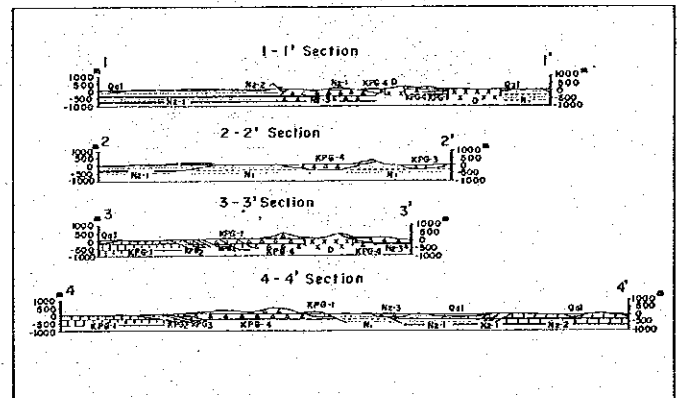
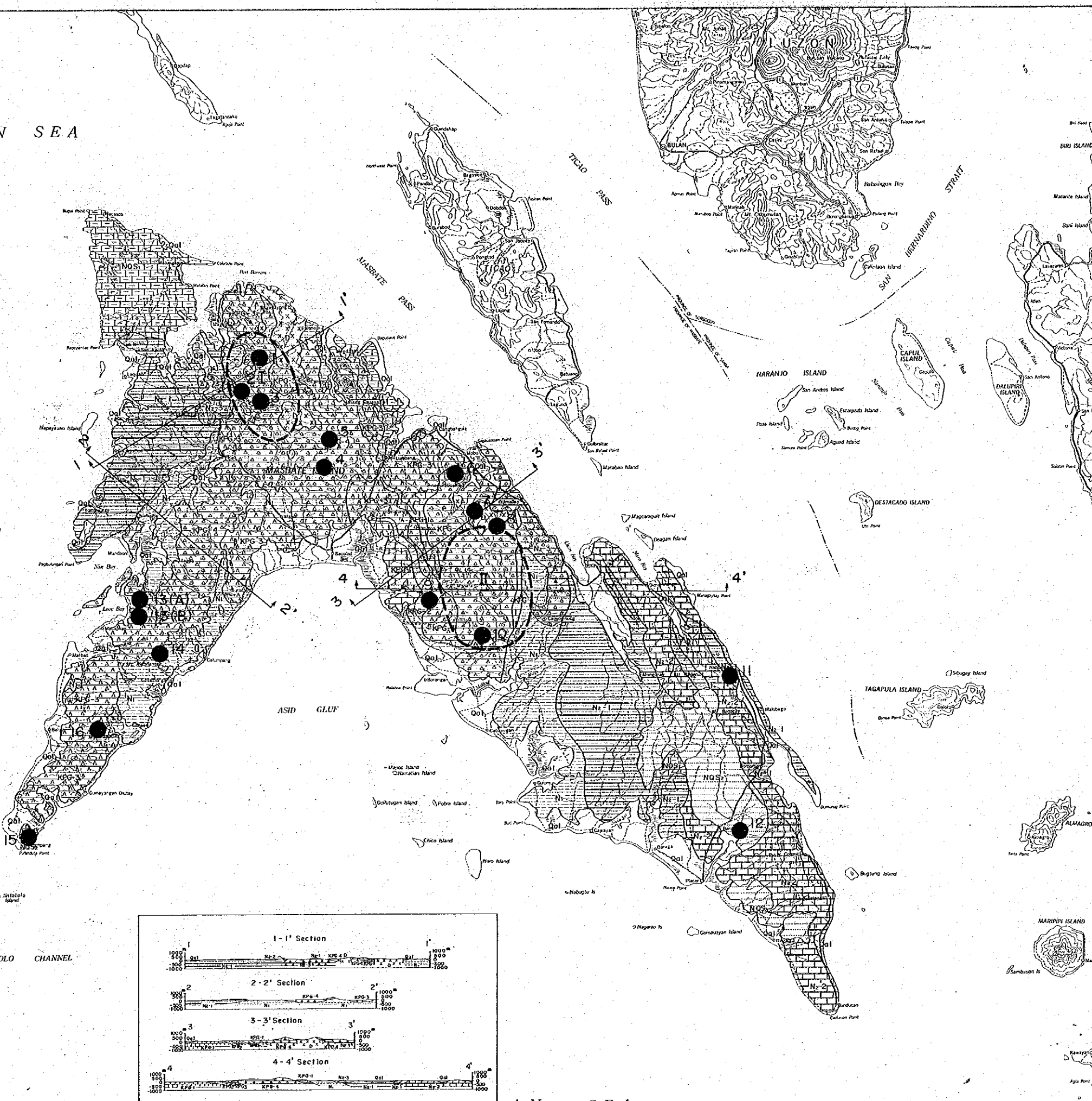
SIBUYAN SEA

Mineral Showing List

NO	Name of Showing	Kind of Ore	Code
1	Copay	Gold bearing siliceous ore	D
2	Luya		D
3	Concepcion		C
4	Malanglad	Epithermal vein	D
5	X.Y.Z	Network Vein	D
6	Mandole		C
7	Boong	Vein type disseminated deposit	E
8	Marintac	Epithermal vein type deposit	C
9	Mt. Uac	Ventype deposit	D
10	Dogongan	Hydrothermal vein type deposit	B
11	Nobangic	Sedimentary Mn deposit	E
12	Piozer	Unknown	
13	Ayat	Sedimentary manganese deposit	E
1301	Ayat		E
14	Tolson		E
15	Colampang		E
16	Bolud		E

Evaluation Grade  
 B: High necessary for following survey  
 C: Having room for following survey  
 D: Low necessary for following survey  
 E: Needless for following survey

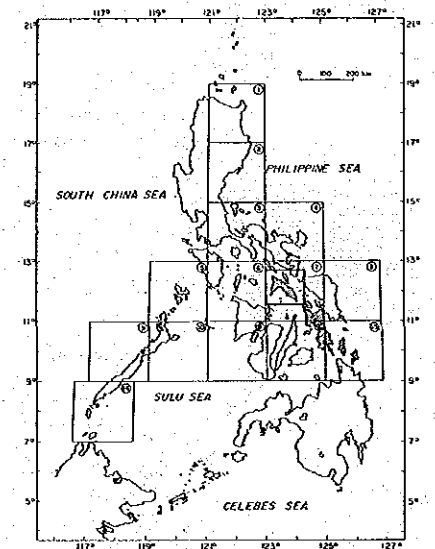
Promising Area List  
 I Around Aroroy mine Area  
 I Around Mt. Uac Area.



AN SEA

フィリピン共和国  
 鉱物資源基本図調査  
 第2年次  
 マスバテ地区  
 鉱徴地及び調査有望地位置図

国際協力事業団  
 15163  
 調査資料室編



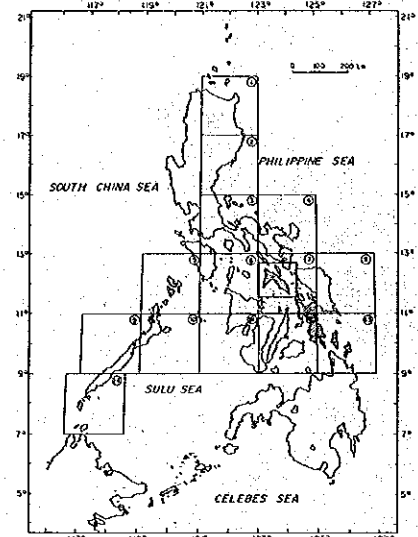
昭和61年3月  
 国際協力事業団  
 金属鉱業事業団

LEGEND

Sediments		Intrusives		
Quaternary	Holocene	Qal	Recent river and Coastal Deposits, Coral Reef.	
	Pleistocene	NUSz	Unconsolidated Tuffaceous Sand and Silt.	
NUSH		Conglomeratic Fossiliferous and Loose Spongy-like Limestone.		
Pliocene	NSz	Andesitic Lava and Tuffbreccia.	ApA	Hornblend Andesite.
	NSH	Porous and Fossiliferous Limestone.	ApD	Hornblend Diorite.
Miocene	NEz	Conglomerate, Sandstone, Siltstone.		
	NEH	Alternation of Mudstone, Siltstone, Sandstone and Conglomerate.		
Oligocene	RPG-1	Meta-andesitic Volcanics with flow Breccia.		
	RPG-3	Meta-basalt Volcanics with flow Breccia.	GB	Hornblend Gabbro Coarse Grained.
Cretaceous	KPG-2	Meta-sediments (Slate, Shale, Sandstone, Siltstone etc.)		
	KPG-11	Recrystalline Limestone.		

7 ● Mineral Showing  
 II Promising Area

国際協力事業団  
 1516  
 調査資料室



昭和61年3月  
 国際協力事業団  
 金属鉱業事業団

Scale 1:250,000

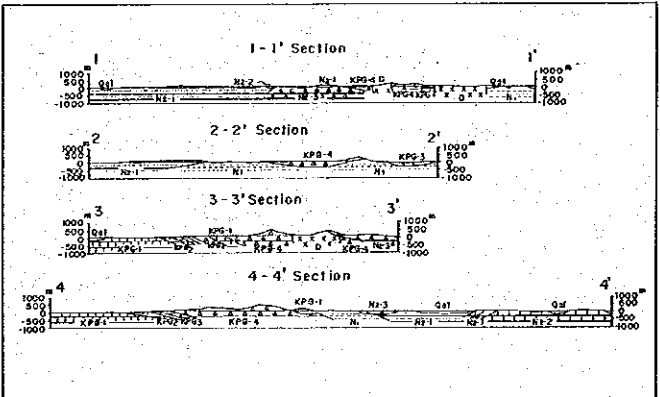
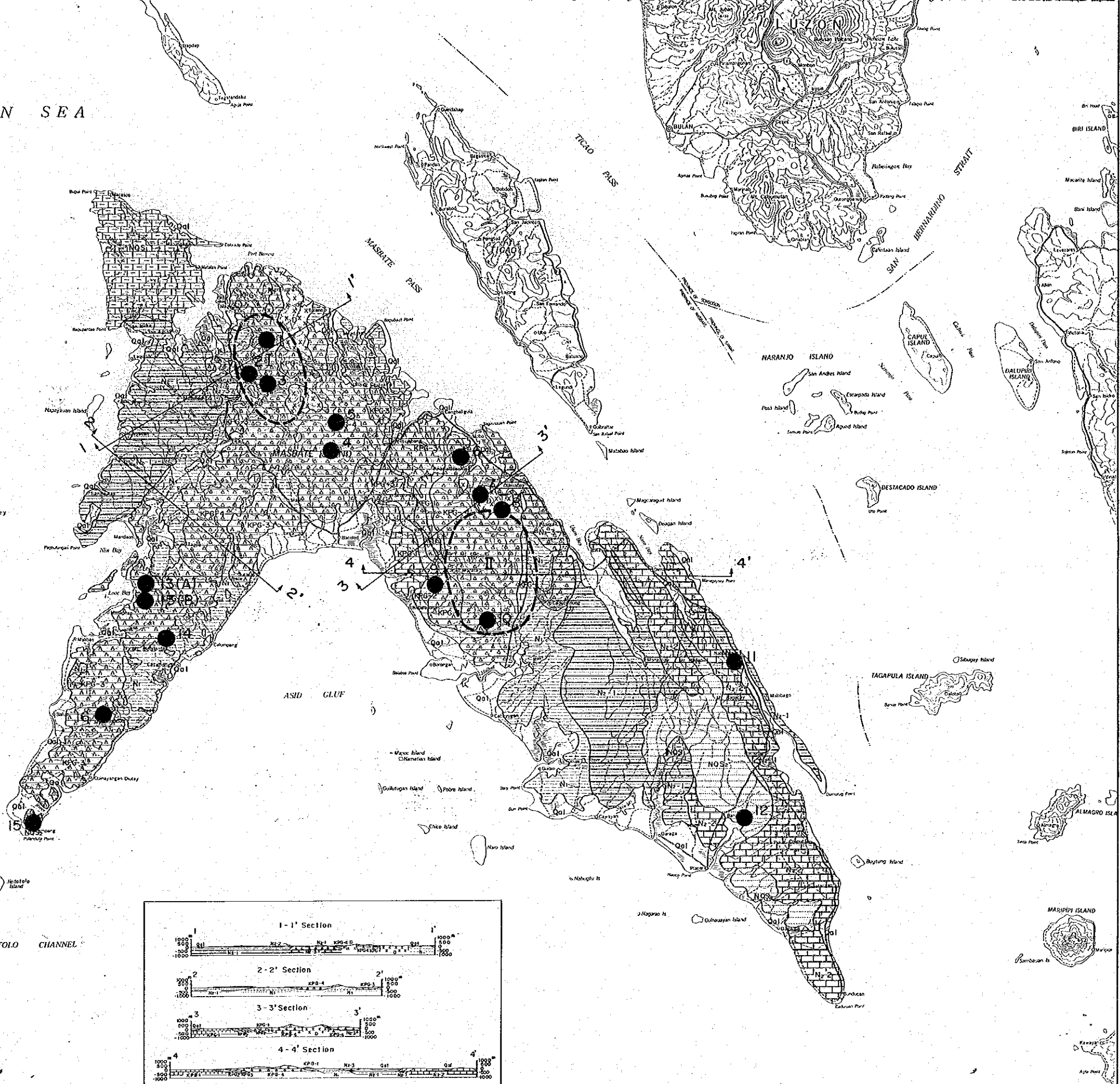
SIBUYAN SEA

Mineral Showing List

NO	Name of Showing	Kind of Ore	Grade
1	Cagoy	Gold-silver Sulfide (Au, Ag)	D
2	Luyo	"	D
3	Conception	"	C
4	Mahunglad	Epithermal vein Au	D
5	X.Y.Z	" (Au)	D
6	Mandale	Network Vein	C
7	Boang	Mid-type disseminated Au	E
8	Morlatoc	Hydrothermal vein deposit	C
9	Mt. Uac	Vein-type deposit (Au)	D
10	Dogongan	Hydrothermal type deposit	B
11	Mabongic	Sedimentary deposit	E
12	Placer	Unknown	E
13	Ayot	Sedimentary deposit	E
14	Tolson	"	E
15	Calumpang	"	E
16	Batud	"	E

Evaluation Grade  
 B: High necessary for following survey  
 C: Having room for following survey  
 D: Low necessary for following survey  
 E: Needless for following survey

Promising Area List  
 I Around Arroy mine Area  
 II Around Mt. Uac Area



LEGEND

Sediments		Intrusives	
Holocene	Qal	Recent River and Coastal Deposits, Coral Reef.	
Quaternary	NOS-1	Unconsolidated Tuffaceous Sand and Silt.	
	NOS-2	Conglomeratic Fossiliferous and Loose Sponge-like Limestone.	
Pleistocene	NOS-3	Andesitic Lava and Tuffbreccia.	Hornblend Andes.
	NOS-4	Polus and Fossiliferous Limestone.	Hornblend Diorite
Pliocene	NE-1	Conglomerate, Sandstone, Siltstone.	
	N-1	Alteration of Mudstone, Siltstone, Sandstone and Conglomerate.	
Miocene	KPG-4	Meta-andesitic Volcanics with flow Breccia.	
	KPG-3	Meta-basalt Volcanics with flow Breccia.	Hornblend Gabbro
Oligocene	KPG-2	Meta-sediments (Slate, Shale, Sandstone, Siltstone, etc.)	Coarse Grained
	KPG-1	Recrystalline Limestone.	
Cretaceous			
7 ●		Mineral Showing	
II		Promising Area	

AN SEA

SIBUYAN SEA

Mineral Showing List

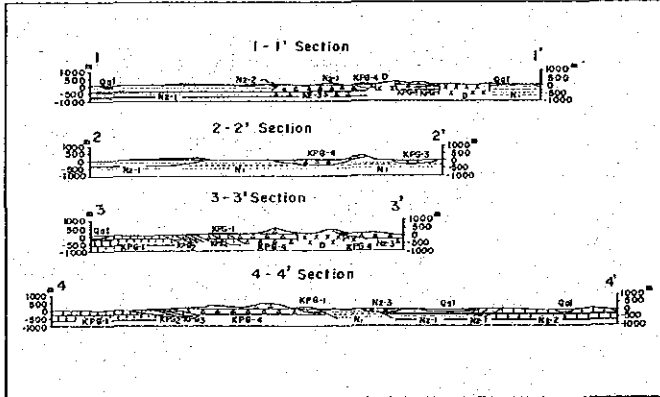
NO	Name of Show	Kind of Ore	Grade
1	Copsy	Gold	D
2	Luyo	"	D
3	Conception	"	C
4	Munaglad	Epithermal vein	D
5	X.Y.Z	(Au)	D
6	Mandale	Network Vein	C
7	Boang	Vein type disseminated	E
8	Marintoc	Hydrothermal vein deposit	C
9	Mt. Uac	Vein deposit	D
10	Daganganan	Hydrothermal vein type deposit	B
11	Hobangic	Sedimentary manganese deposit	E
12	Placer	Unknown	
13A	Ayat	Sedimentary manganese deposit	E
13B	Ayat	"	E
14	Tolson	"	E
15	Calumpang	"	E
16	Balud	"	E

Evaluation Grade

- B: High necessary for following survey
- C: Having room for following survey
- D: Low necessary for following survey
- E: Needless for following survey

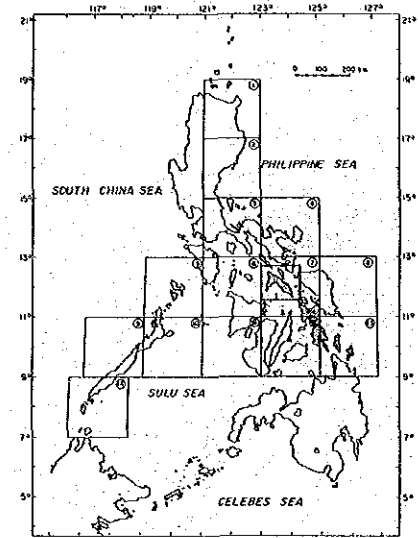
Promising Area List

- I Around Aroray mnc Area
- II Around Mt. Uac Area



フィリピン共和国  
 鉱物資源基本図調査  
 第2年次  
 マスバテ地区  
 鉱徴地及び調査有望地位位置図

国際協力事業団  
 15163  
 国書資料室蔵



昭和61年3月  
 国際協力事業団  
 金属鉱業事業団

Scale 1:250,000  
 0 10 20 km

LEGEND

Sediments		Intrusives		
Quaternary	Holocene	Qa1	Recent River and Coastal Deposits, Coral Reef.	
	Pleistocene	NOS-1	Unconsolidated Tuffaceous Sand and Silt.	
		NOS-2	Conglomeratic Fossiliferous and Loose Sponge-like Limestone.	
Neogene	Pliocene	N-3	Andesitic Lava and Tuffbreccia.	Hornblend Andesite.
		N-2	Polous and Fossiliferous Limestone.	Hornblend Diorite.
	Miocene	N-1	Conglomerate, Sandstone, Siltstone.	
		N	Alternation of Mudstone, Siltstone, Sandstone and Conglomerate.	
Oligocene	RC-4	Meta-andesitic Volcanics with flow Breccia.		
	RC-3	Meta-basaltic Volcanics with flow Breccia.	Hornblend Gabbro	
Cretaceous	RF-2	Meta-sediments (Slate, Shale, Sandstone, Siltstone etc.)	Coarse Grained.	
	RF-1	Recrystalline Limestone.		
		7 ●	Mineral Showing	
		II	Promising Area	