


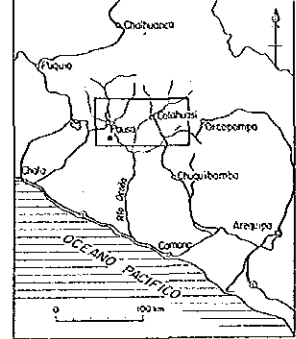
PL.21

MINERAL EXPLORATION  
IN  
COTAHUASI AREA  
(PHASE II)

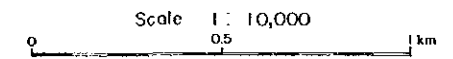
国際協力による  
16201  
調査資料図表

GEOCHEMICAL INTERPRETATION MAP OF  
PRINCIPAL COMPONENT ANOMALY,  
PIRCA EASTERN AREA

LOCATION INDEX

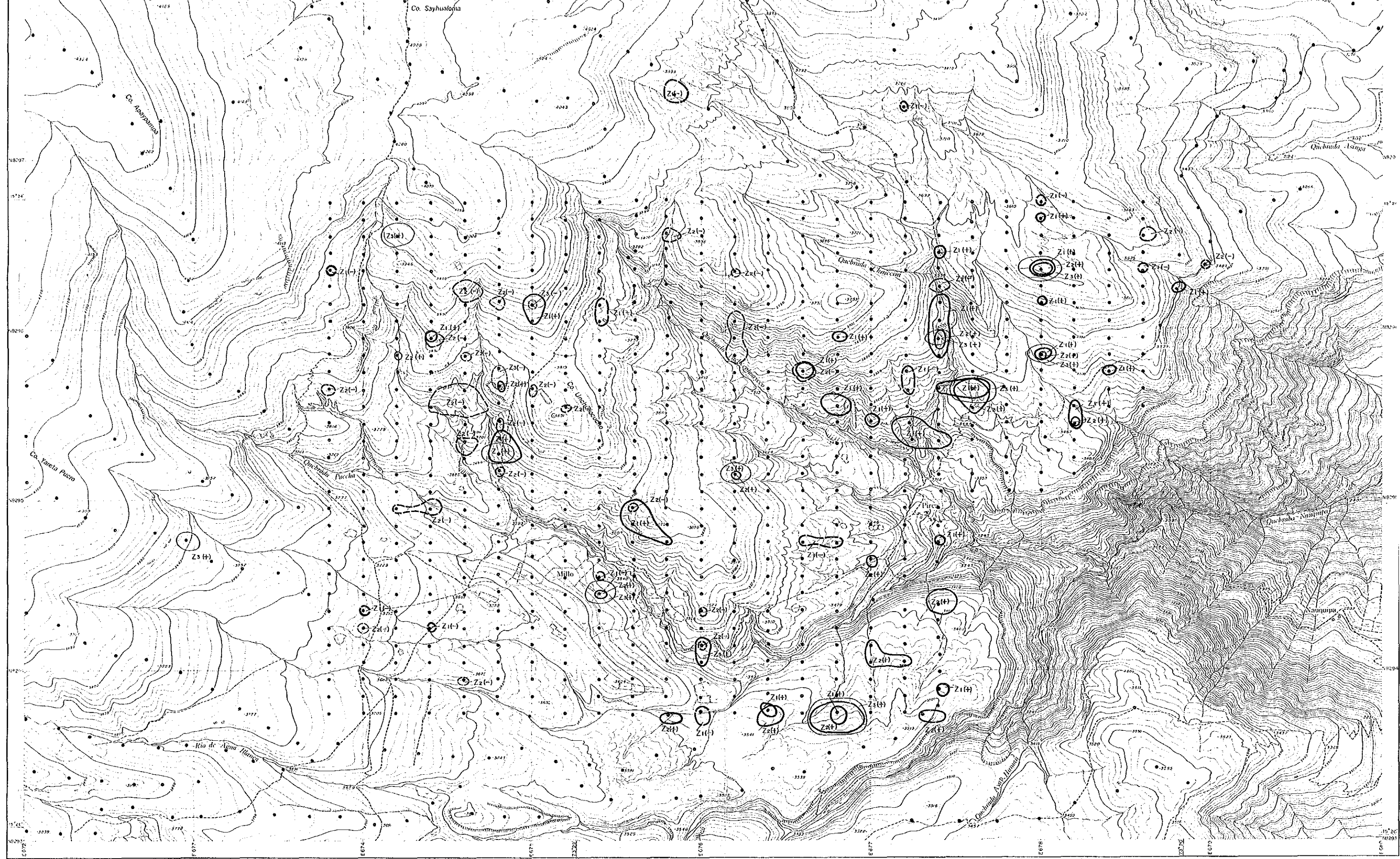
JAPAN INTERNATIONAL COOPERATION AGENCY  
METAL MINING AGENCY OF JAPAN  
INSTITUTO GEOLOGICO MINERO Y METALURGICO  
February 1987



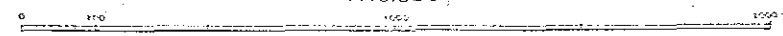
LEGEND

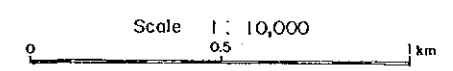
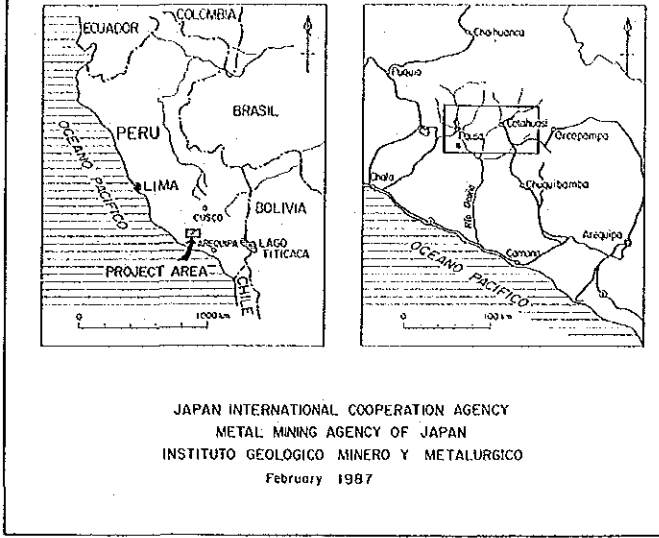
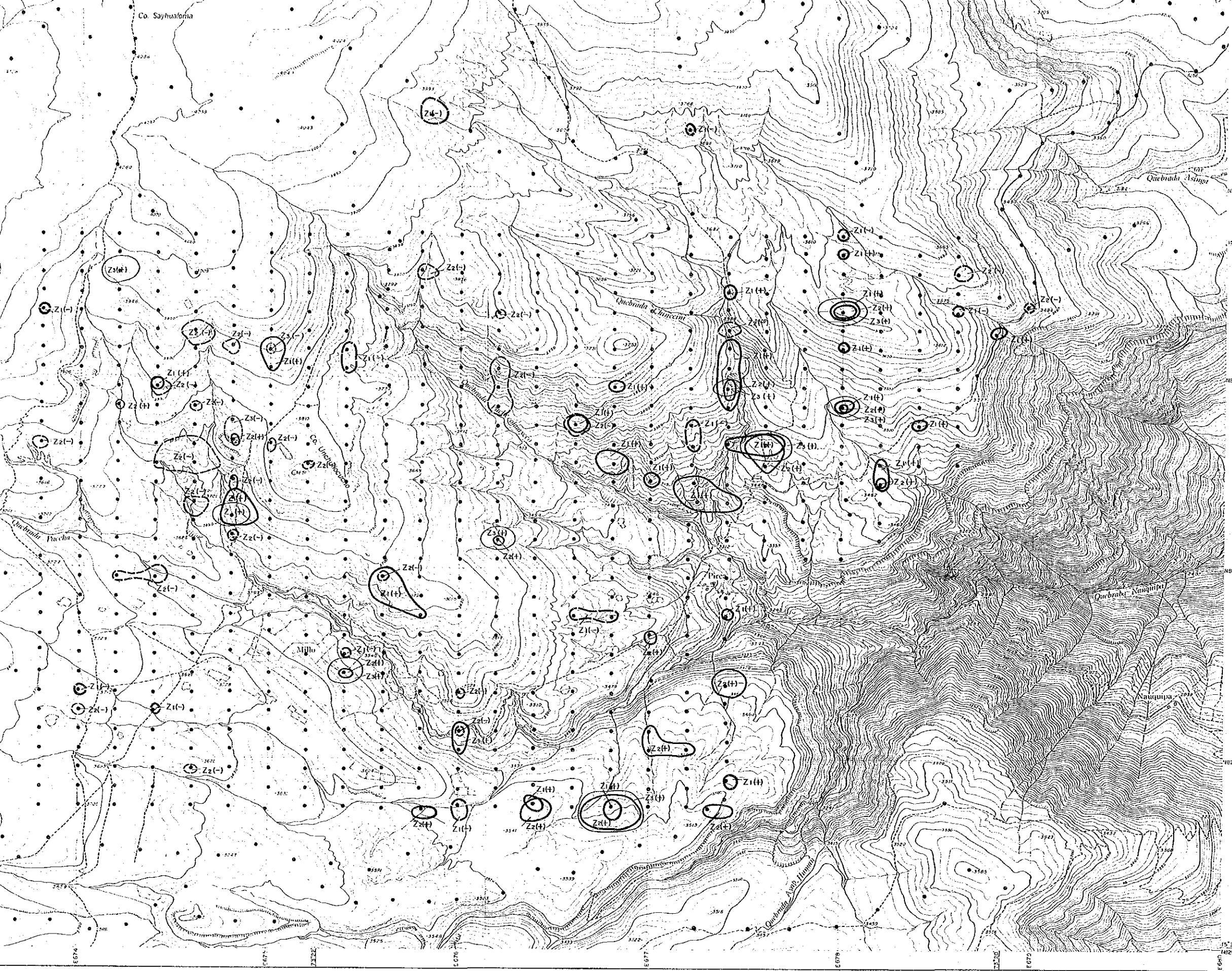
Principal Component	Anomaly	
	+	-
1st	Z1(+)	Z1(-)
2nd	Z2(+)	Z2(-)
3rd	Z3(+)	Z3(-)





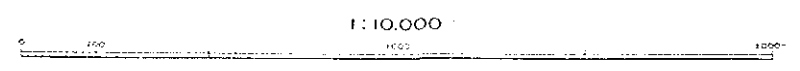
1:10,000





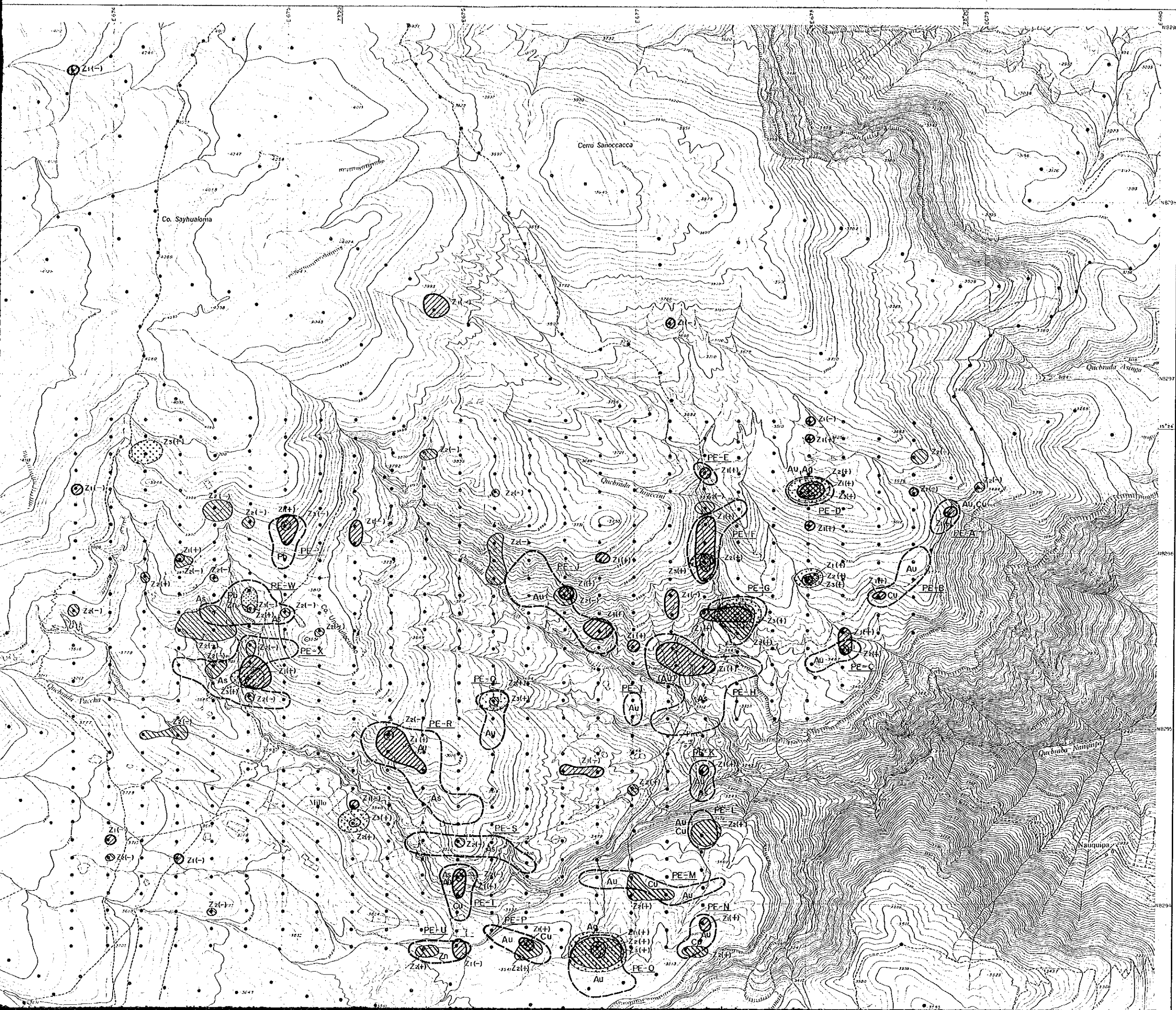
LEGEND

Principal Component	Anomaly	
	+	-
1st	Z1(+)	Z1(-)
2nd	Z2(+)	Z2(-)
3rd	Z3(+)	Z3(-)









PL.22

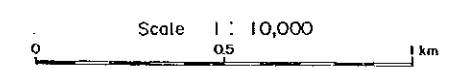
MINERAL EXPLORATION  
IN  
COTAHUASI AREA  
(PHASE II)

16201

GEOCHEMICAL INTERPRETATION MAP OF  
THE PIRCA EASTERN AREA  
(COMPOSITE DATA)

LOCATION INDEX

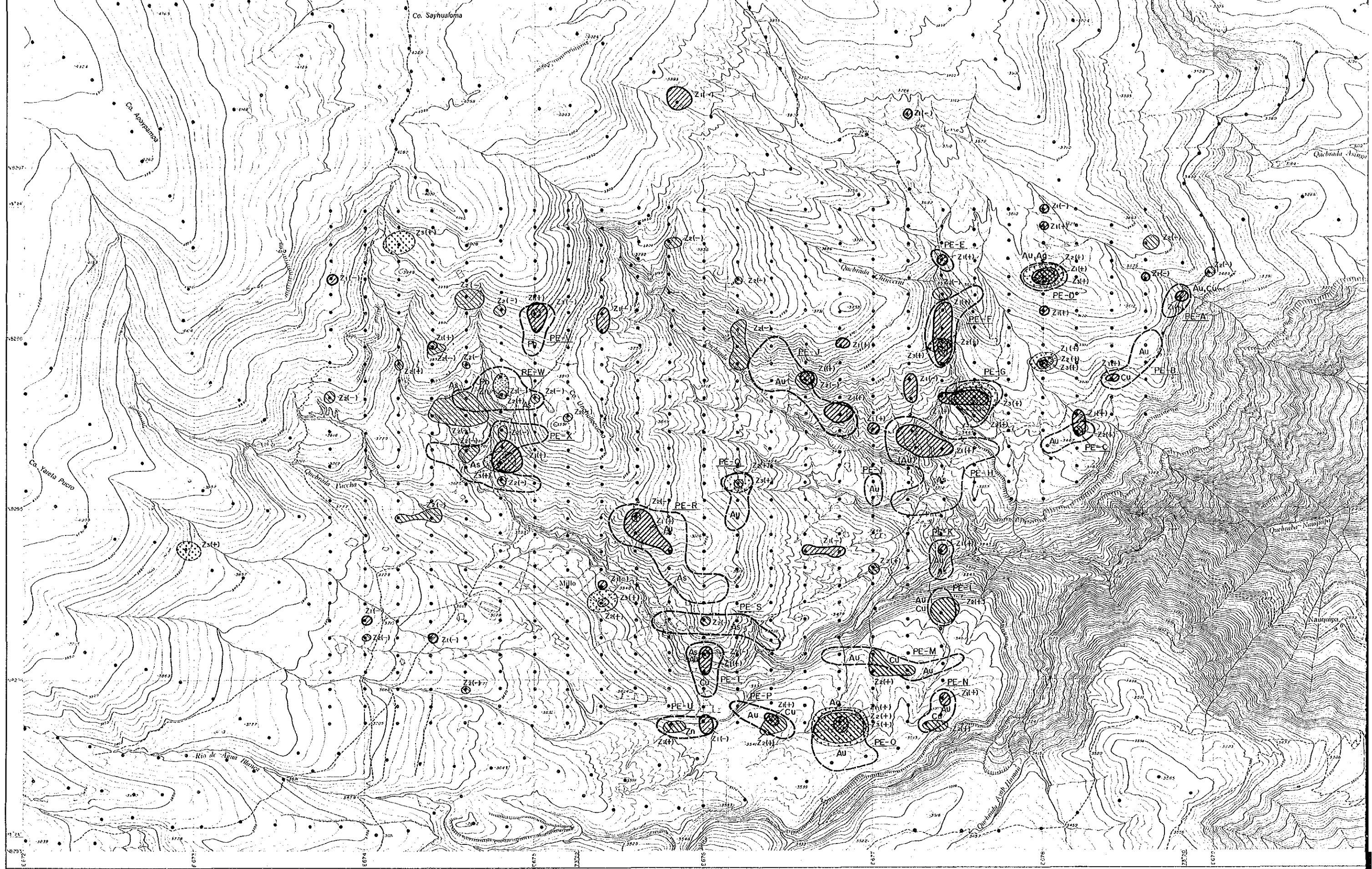
JAPAN INTERNATIONAL COOPERATION AGENCY  
METAL MINING AGENCY OF JAPAN  
INSTITUTO GEOLOGICO MINERO Y METALURGICO  
February 1987



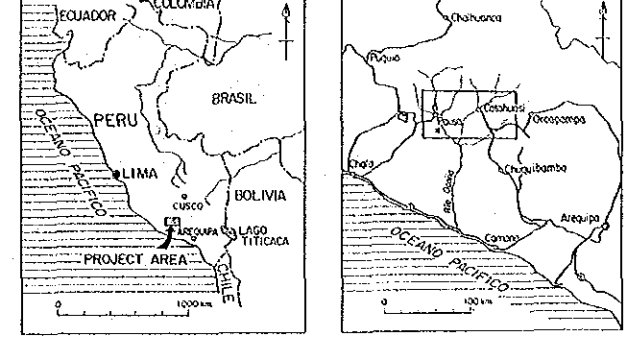
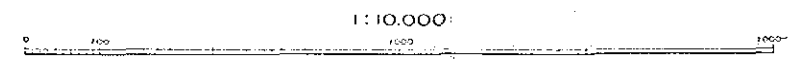
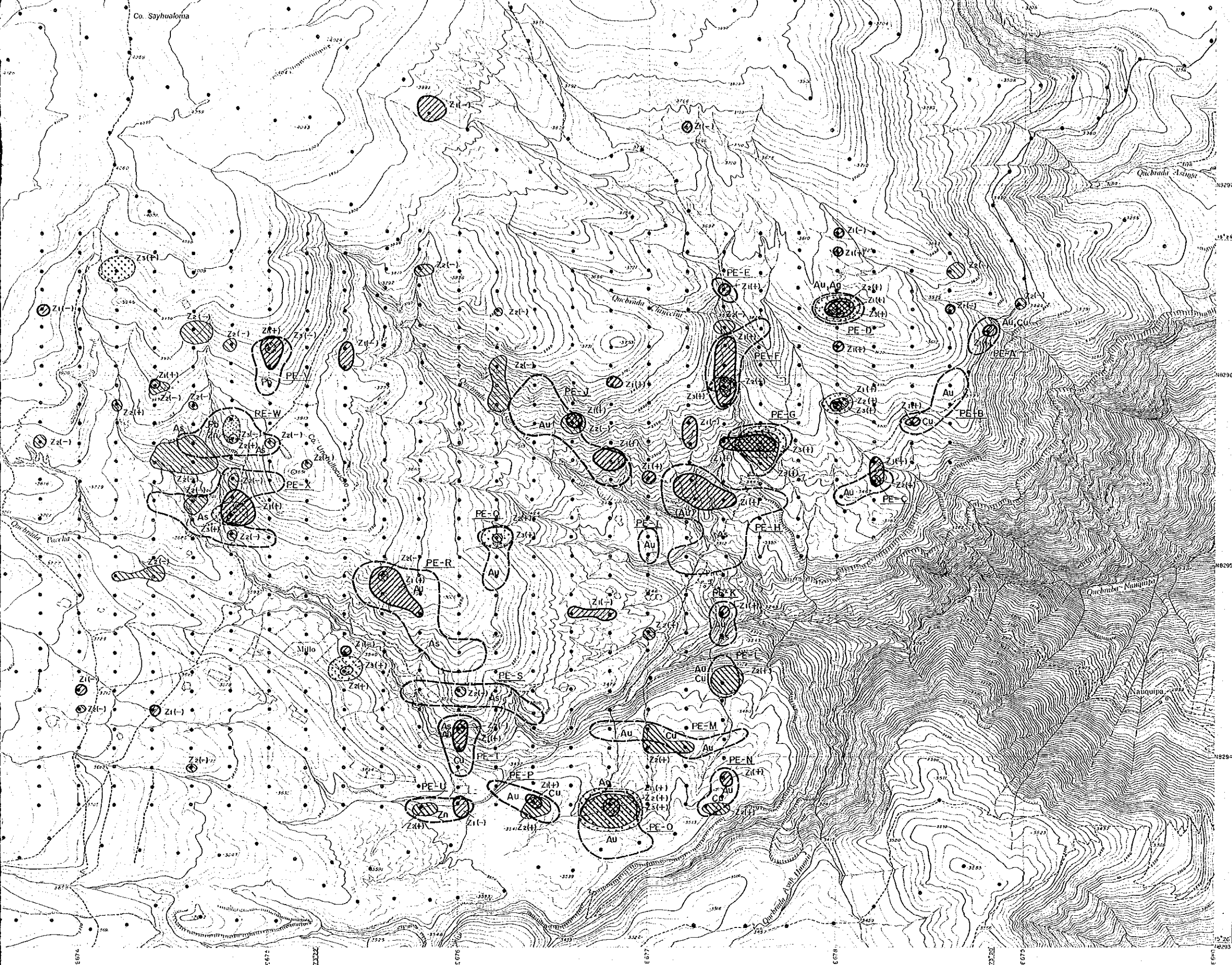
### LEGEND

- Geochemical Anomaly
- <Univariate Analysis>
- Anomaly Zone and Anomalous Elements
  - PE-A Name of Anomaly Zone
- <Principal Components Analysis>
- 1st Principal Component
    - Z1(+) + Anomaly
    - Z1(-) - Anomaly
  - 2nd Principal Component
    - Z2(+) + Anomaly
    - Z2(-) - Anomaly
  - 3rd Principal Component
    - Z3(+) + Anomaly
    - Z3(-) - Anomaly

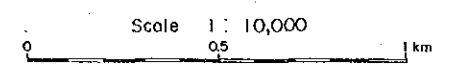




1:10.000  
0 100 1000



JAPAN INTERNATIONAL COOPERATION AGENCY  
 METAL MINING AGENCY OF JAPAN  
 INSTITUTO GEOLOGICO MINERO Y METALURGICO  
 February 1987



### LEGEND

- Geochemical Anomaly  
 <Univariate Analysis>
- Anomaly Zone and Anomalous Elements
  - PE-A Name of Anomaly Zone
- <Principal Components Analysis>
- 1st Principal Component
    - Z1(+) + Anomaly
    - Z1(-) - Anomaly
  - 2nd Principal Component
    - Z2(+) + Anomaly
    - Z2(-) - Anomaly
  - 3rd Principal Component
    - Z3(+) + Anomaly
    - Z3(-) - Anomaly