

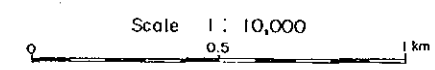
PL. 19-(13)

MINERAL EXPLORATION
IN
COTAHUASI AREA
(PHASE II)

GEOCHEMICAL ANOMALY MAP
BY PRINCIPAL COMPONENT ANALYSIS,
PIRCA EASTERN AREA
(THIRD: Z3)

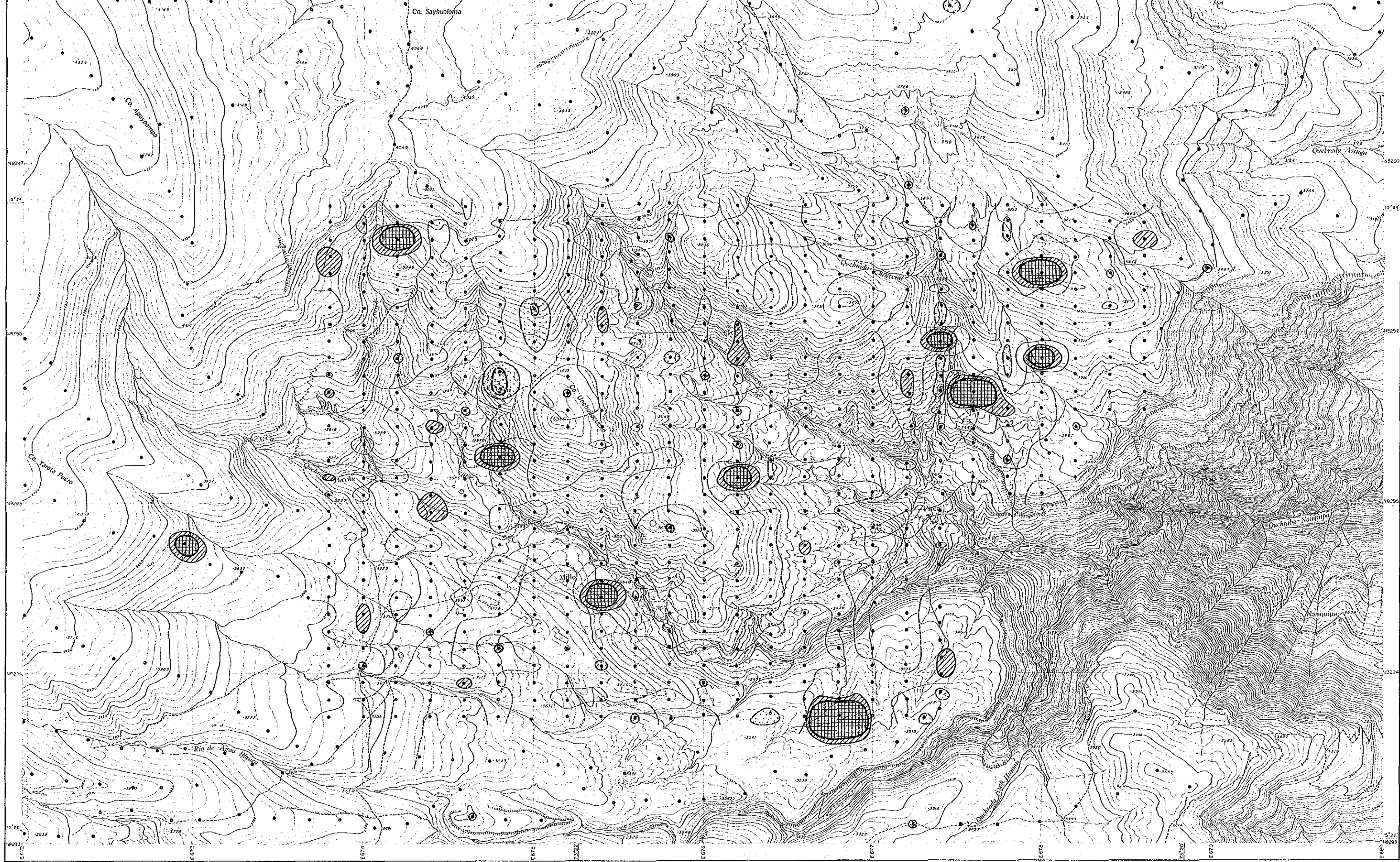
LOCATION INDEX

JAPAN INTERNATIONAL COOPERATION AGENCY
METAL MINING AGENCY OF JAPAN
INSTITUTO GEOLOGICO MINERO Y METALURGICO
February 1987

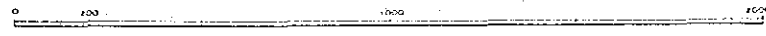


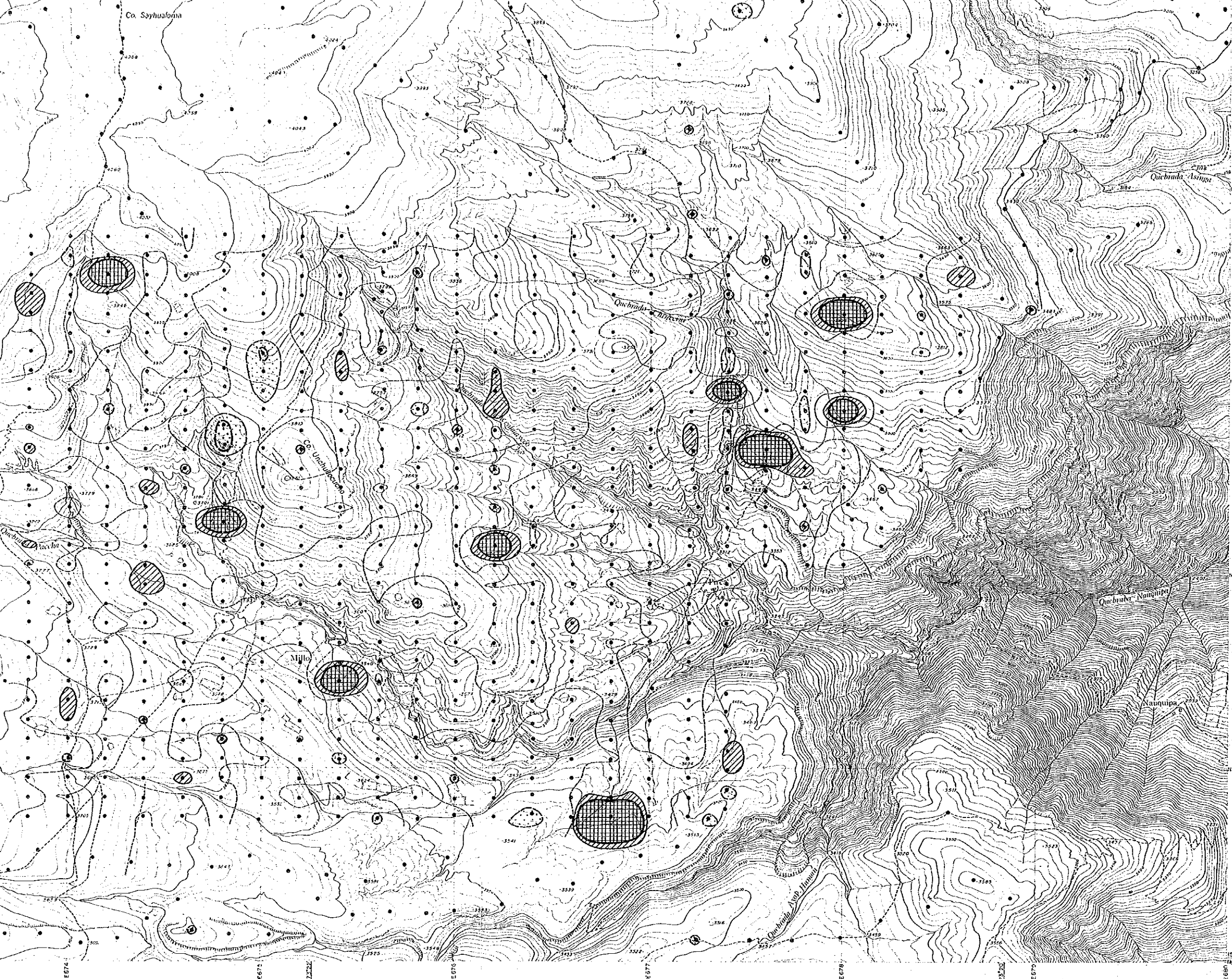
LEGEND

Symbol	Score	Classification
	M+2σ 1.98	+ Anomaly
	M+σ 0.99	+ High background
	M - 0	Background
	M-σ -0.99	- High background
	M-2σ -1.98	- Anomaly



1:10,000





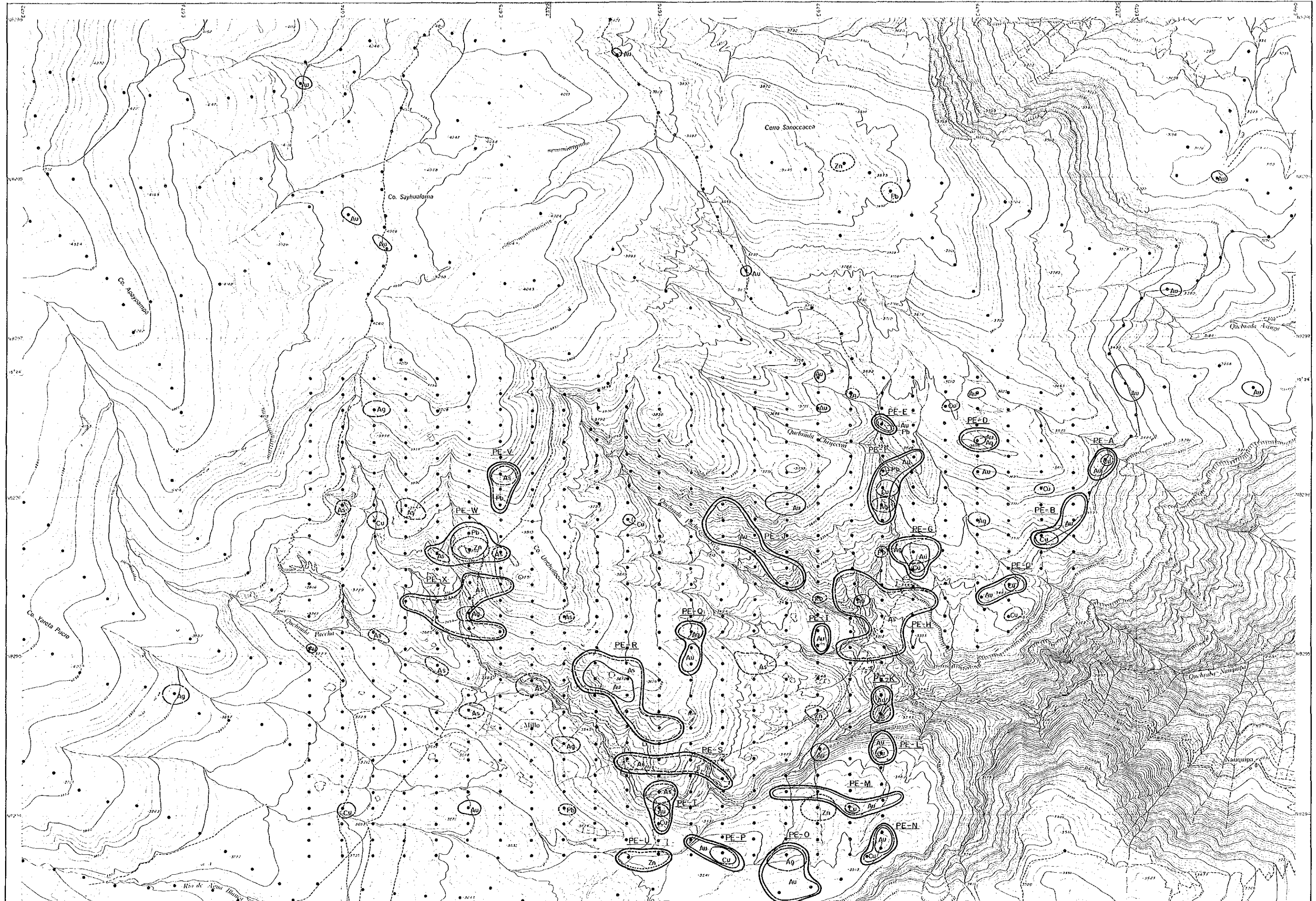
1:10,000

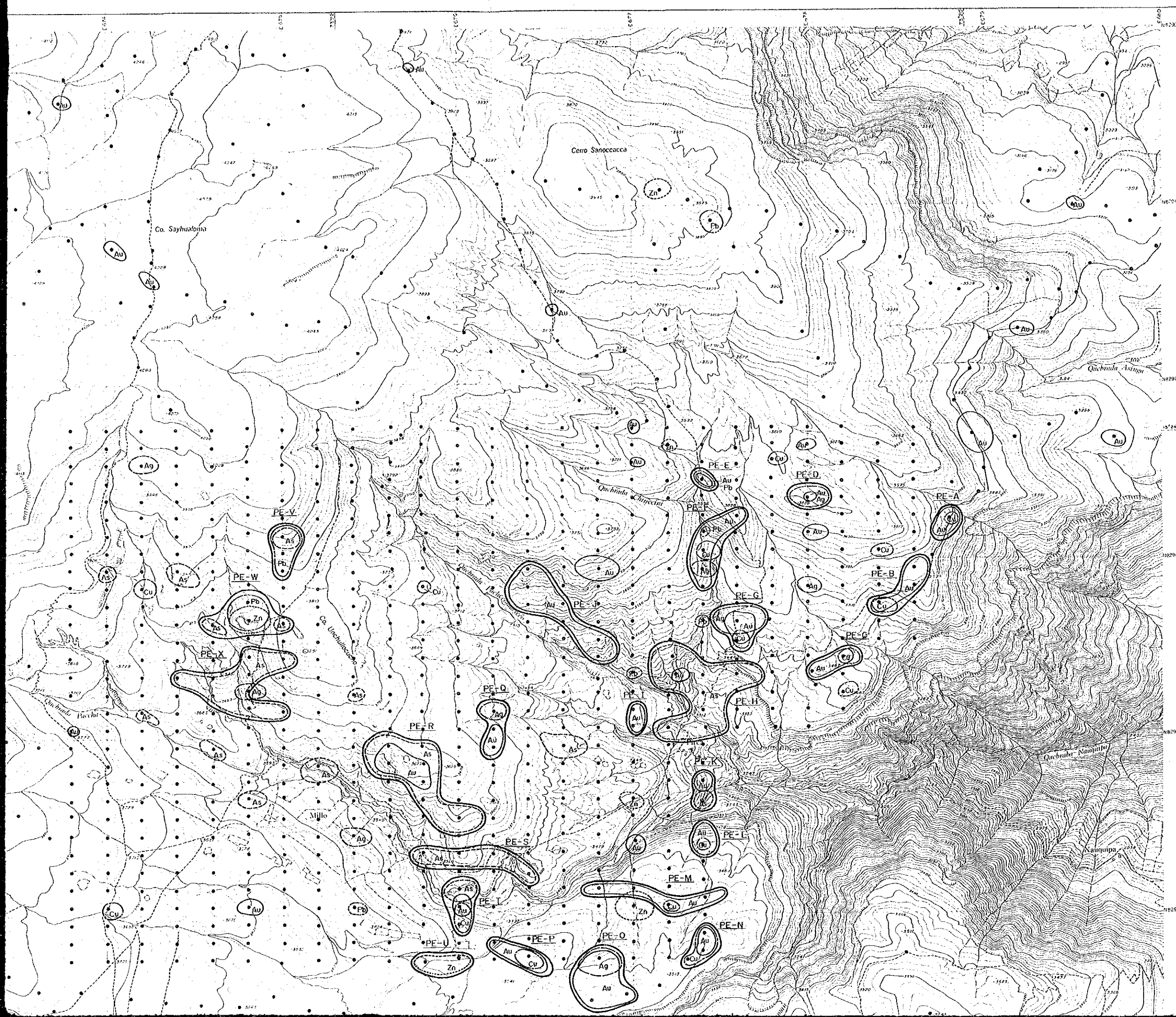
JAPAN INTERNATIONAL COOPERATION AGENCY
 METAL MINING AGENCY OF JAPAN
 INSTITUTO GEOLOGICO MINERO Y METALURGICO
 February 1987

Scale 1:10,000
 0 0.5 1 km

LEGEND

Symbol	Score	Classification
	M+26 1.98	+ Anomaly
	M+6 0.99	+ High background
	M — 0 —	Background
	M-6 -0.99	- High background
	M-26 -1.98	- Anomaly







PL.20

MINERAL EXPLORATION
IN
COTAHUASI AREA
(PHASE II)

16201
圖書資料部

GEOCHEMICAL INTERPRETATION MAP OF THE PIRCA EASTERN AREA (6 ELEMENTS)


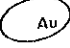
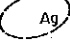
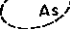
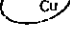
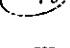
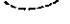
LOCATION INDEX

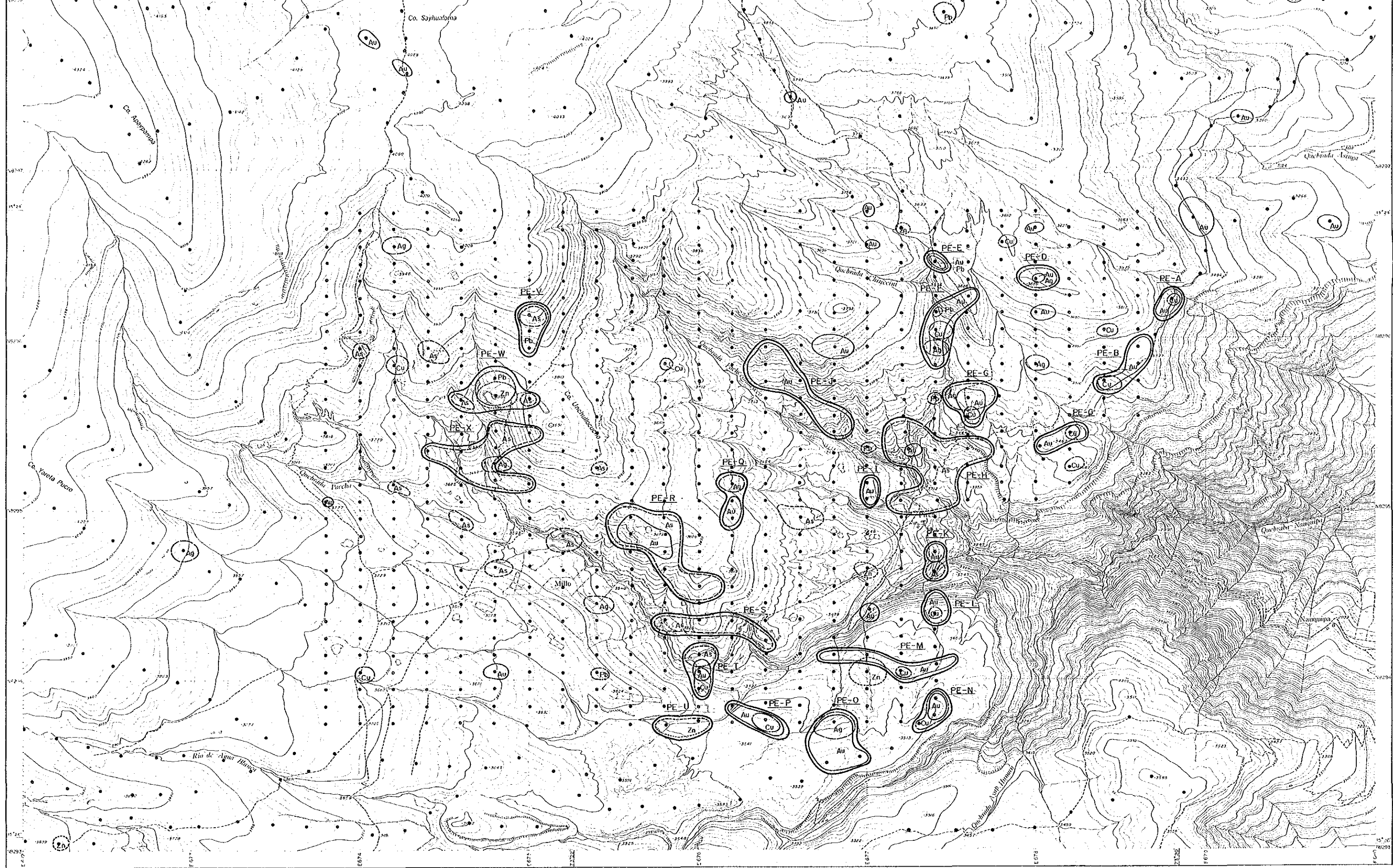



JAPAN INTERNATIONAL COOPERATION AGENCY
METAL MINING AGENCY OF JAPAN
INSTITUTO GEOLOGICO MINERO Y METALURGICO
February 1987

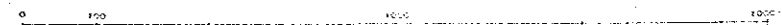
Scale 1 : 10,000
0 05 1 km

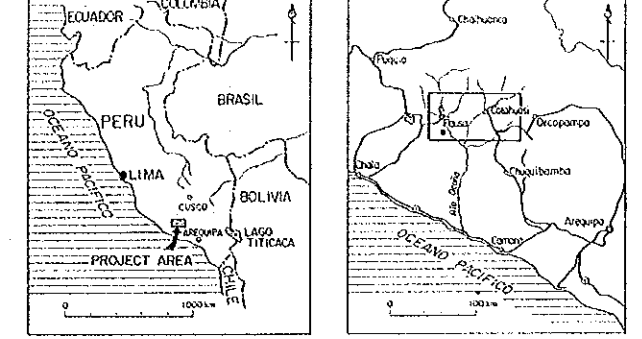
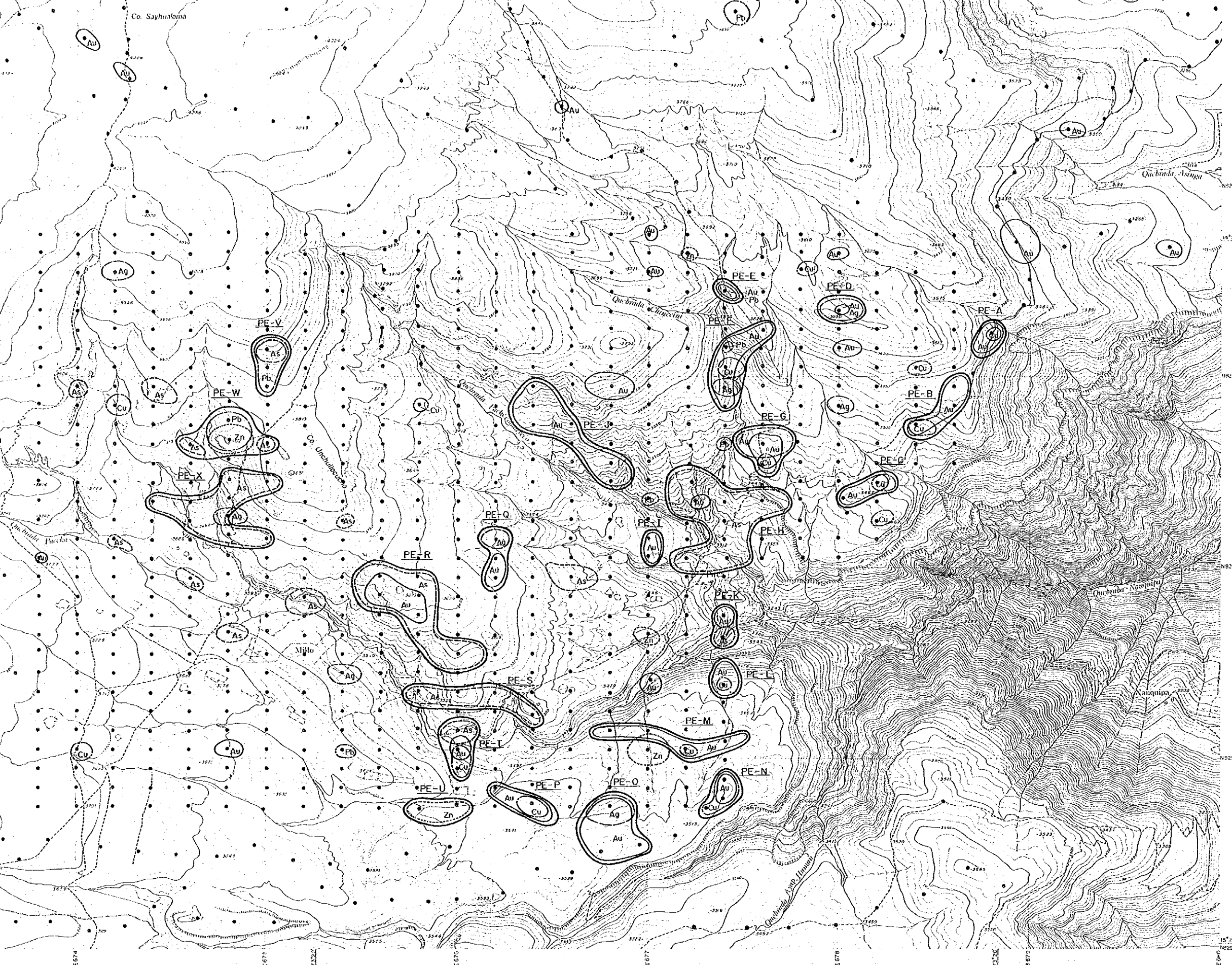
LEGEND

-  Anomaly Zone
- PE-A Name of Anomaly Zone
-  Au Anomaly : Au \geq 7.8 ppb
-  Ag Anomaly : Ag \geq 0.13 ppm
-  As Anomaly : As \geq 41.7 ppm
-  Cu Anomaly : Cu \geq 89.8 ppm
-  Pb Anomaly : Pb \geq 21.2 ppm
-  Zn Anomaly : Zn \geq 146.1 ppm



1:10,000


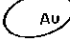
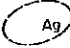
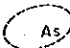
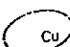
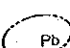
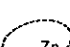




JAPAN INTERNATIONAL COOPERATION AGENCY
 METAL MINING AGENCY OF JAPAN
 INSTITUTO GEOLOGICO MINERO Y METALURGICO
 February 1987

Scale 1 : 10,000
 0 0.5 km

LEGEND

-  Anomaly Zone
- PE-A Name of Anomaly Zone
-  Au Anomaly : Au \geq 7.8 ppb
-  Ag Anomaly : Ag \geq 0.13 ppm
-  As Anomaly : As \geq 41.7 ppm
-  Cu Anomaly : Cu \geq 89.8 ppm
-  Pb Anomaly : Pb \geq 21.2 ppm
-  Zn Anomaly : Zn \geq 146.1 ppm

1 : 10,000