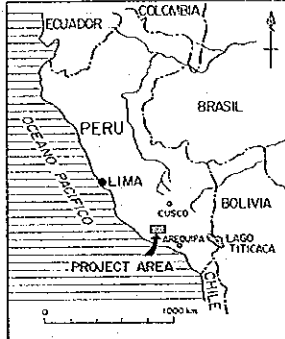



PE-19-(1)
 國際協力事業団
 16201
 図書発行定価書

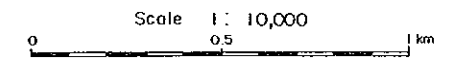
MINERAL EXPLORATION
 IN
 COTAHUASI AREA
 (PHASE I)

GEOCHEMICAL ANOMALY MAP
 BY PRINCIPAL COMPONENT ANALYSIS,
 PIRCA EASTERN AREA
 (FIRST: Z1)

LOCATION INDEX

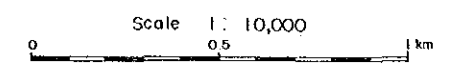
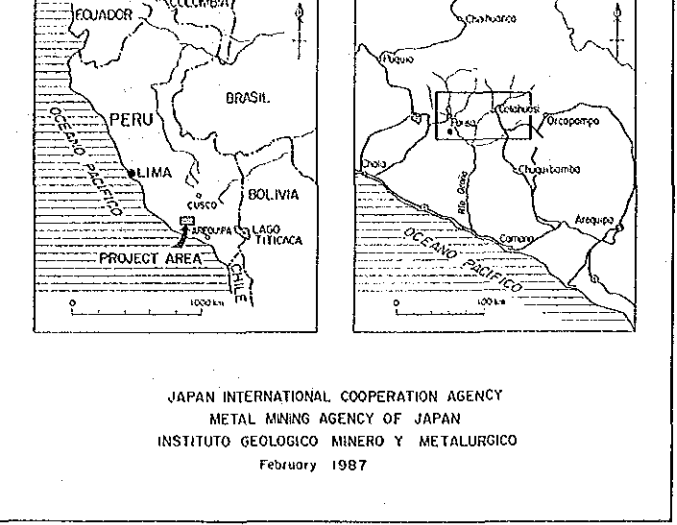
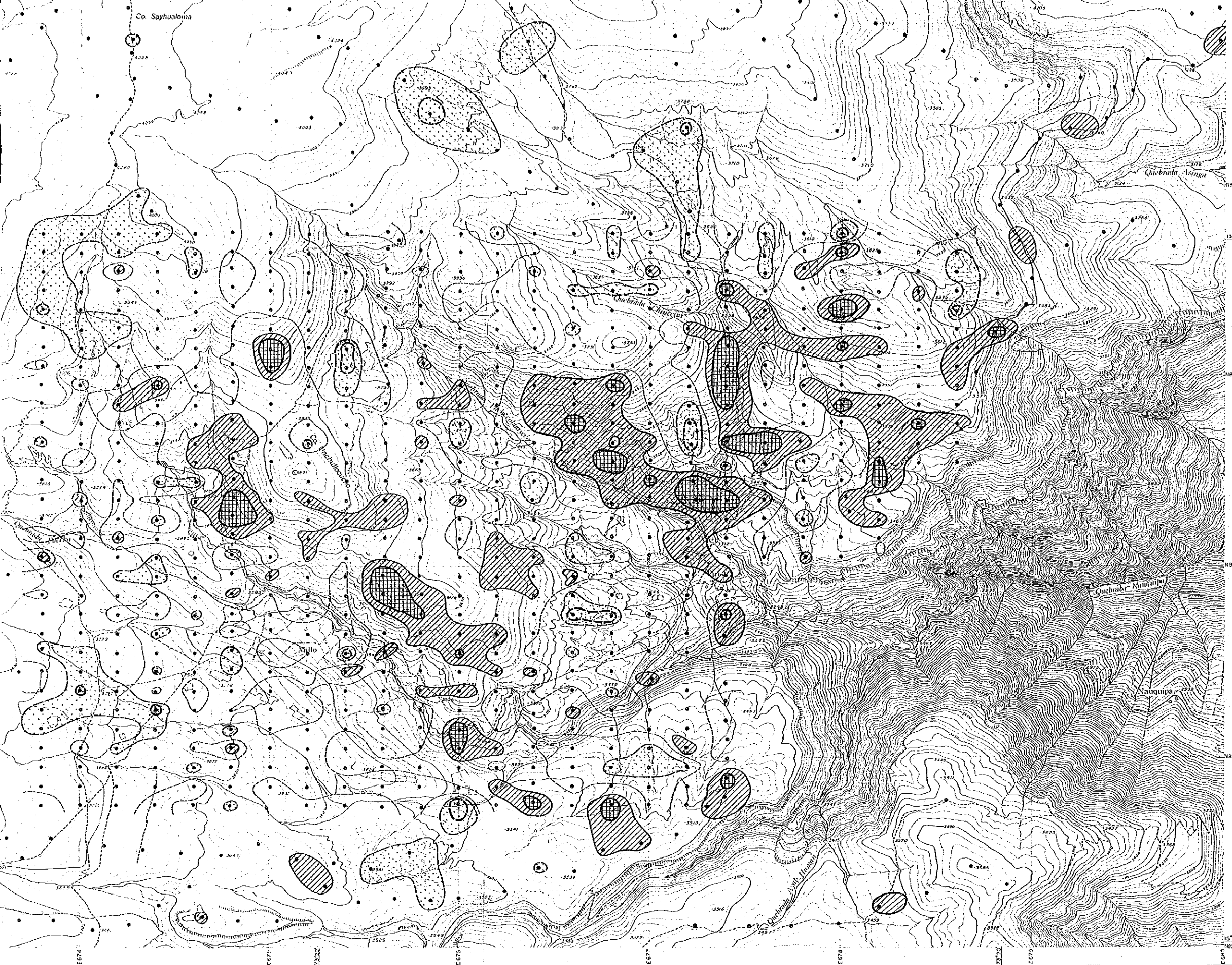



JAPAN INTERNATIONAL COOPERATION AGENCY
 METAL MINING AGENCY OF JAPAN
 INSTITUTO GEOLOGICO MINERO Y METALURGICO
 February 1987



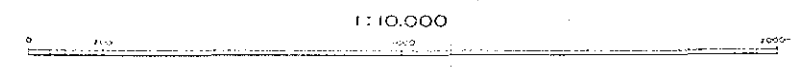
LEGEND

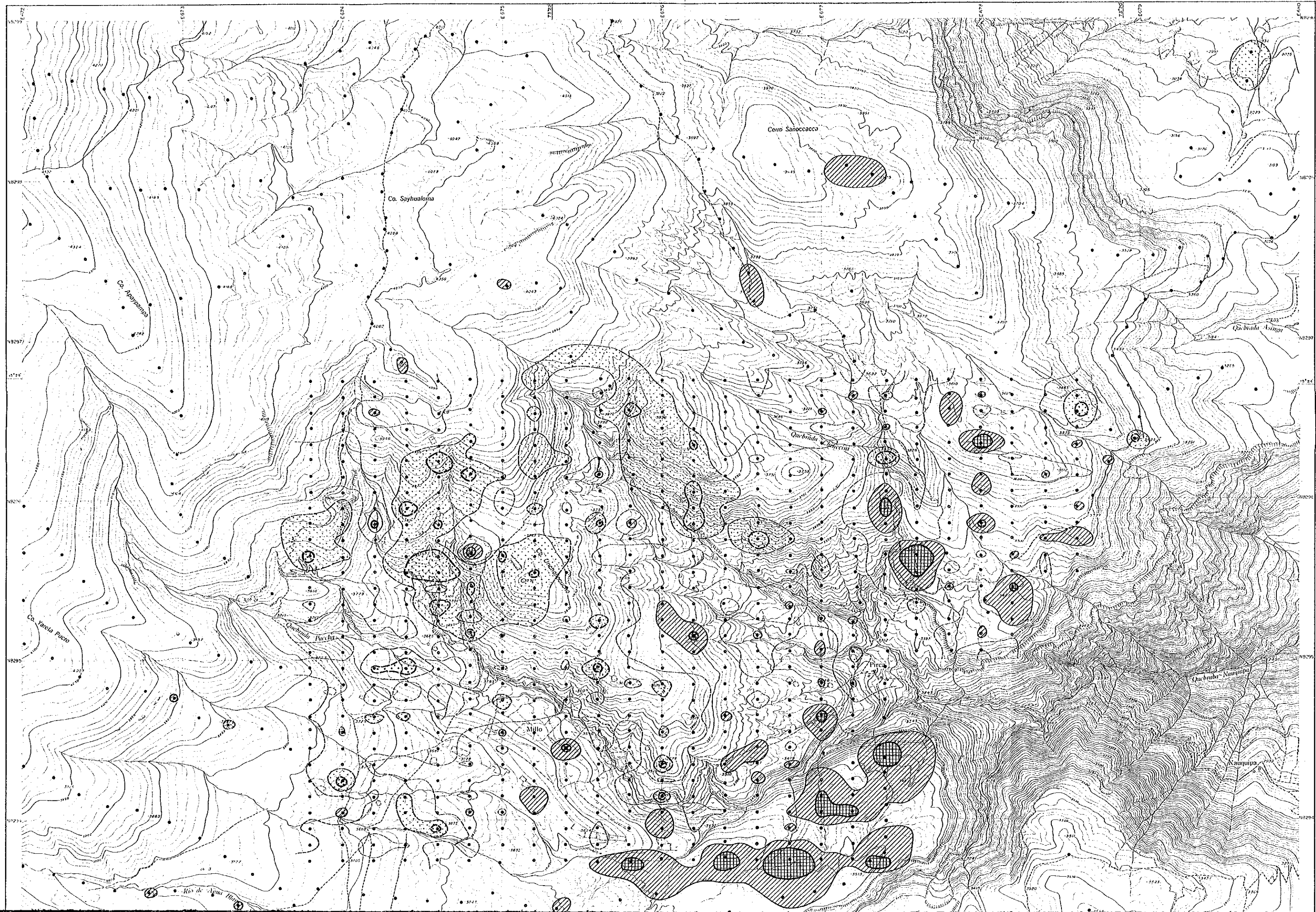
Symbol	Score	Classification
	M+2σ 2.49	+ Anomaly
	M+σ 1.24	+ High background
	M - 0	Background
	M - σ -1.24	- High background
	M - 2σ -2.49	- Anomaly

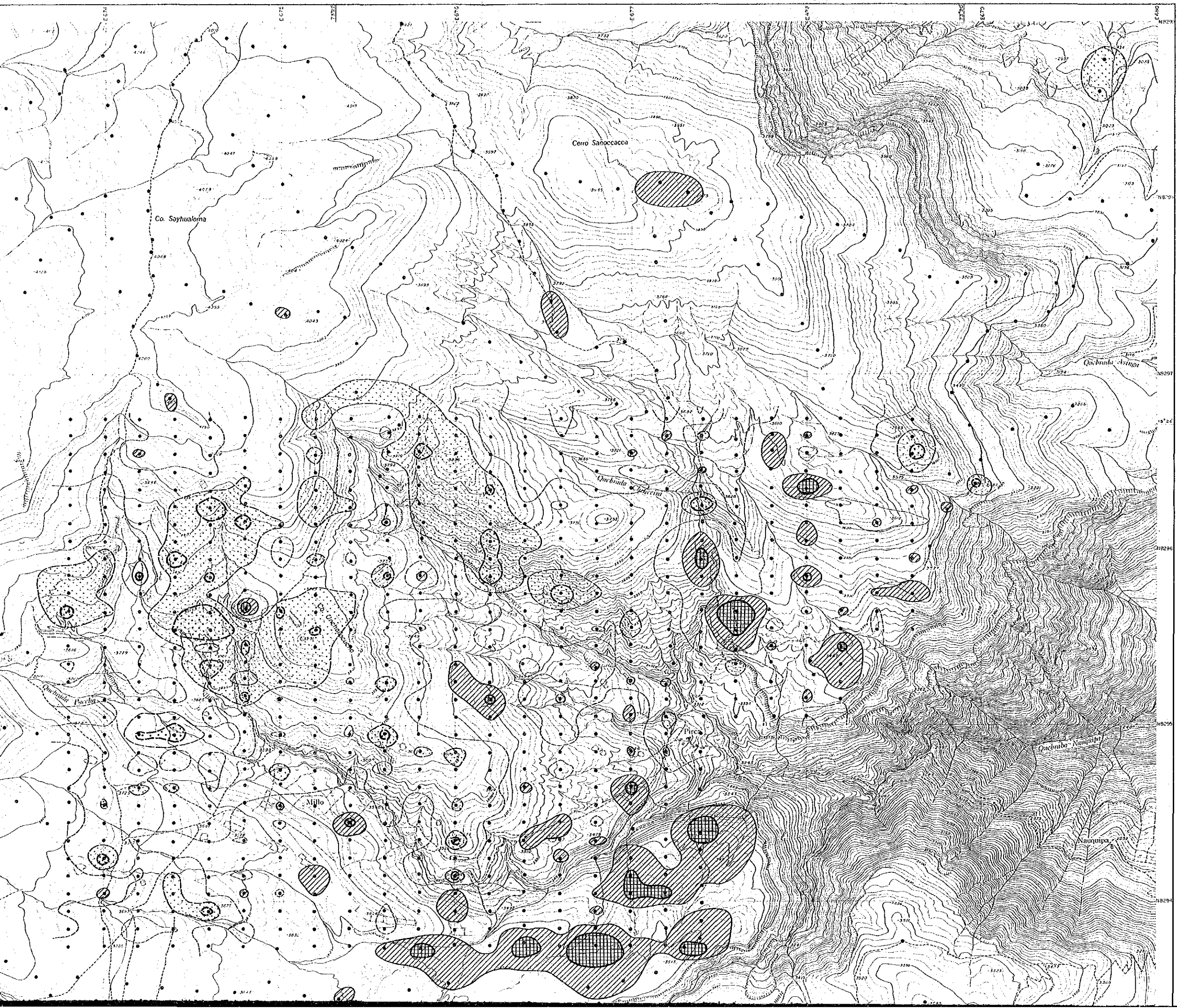


LEGEND

Symbol	Score	Classification
	M+2σ 2.49	+ Anomaly
	M+σ 1.24	+ High background
	M 0	Background
	M-σ -1.24	- High background
	M-2σ -2.49	- Anomaly









PL-19-(2)
16201

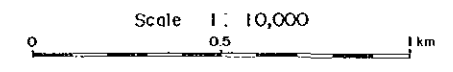
MINERAL EXPLORATION
IN
COTAHUASI AREA
(PHASE II)

GEOCHEMICAL ANOMALY MAP
BY PRINCIPAL COMPONENT ANALYSIS,
PIRCA EASTERN AREA
(SECOND: Z₂)

LOCATION INDEX

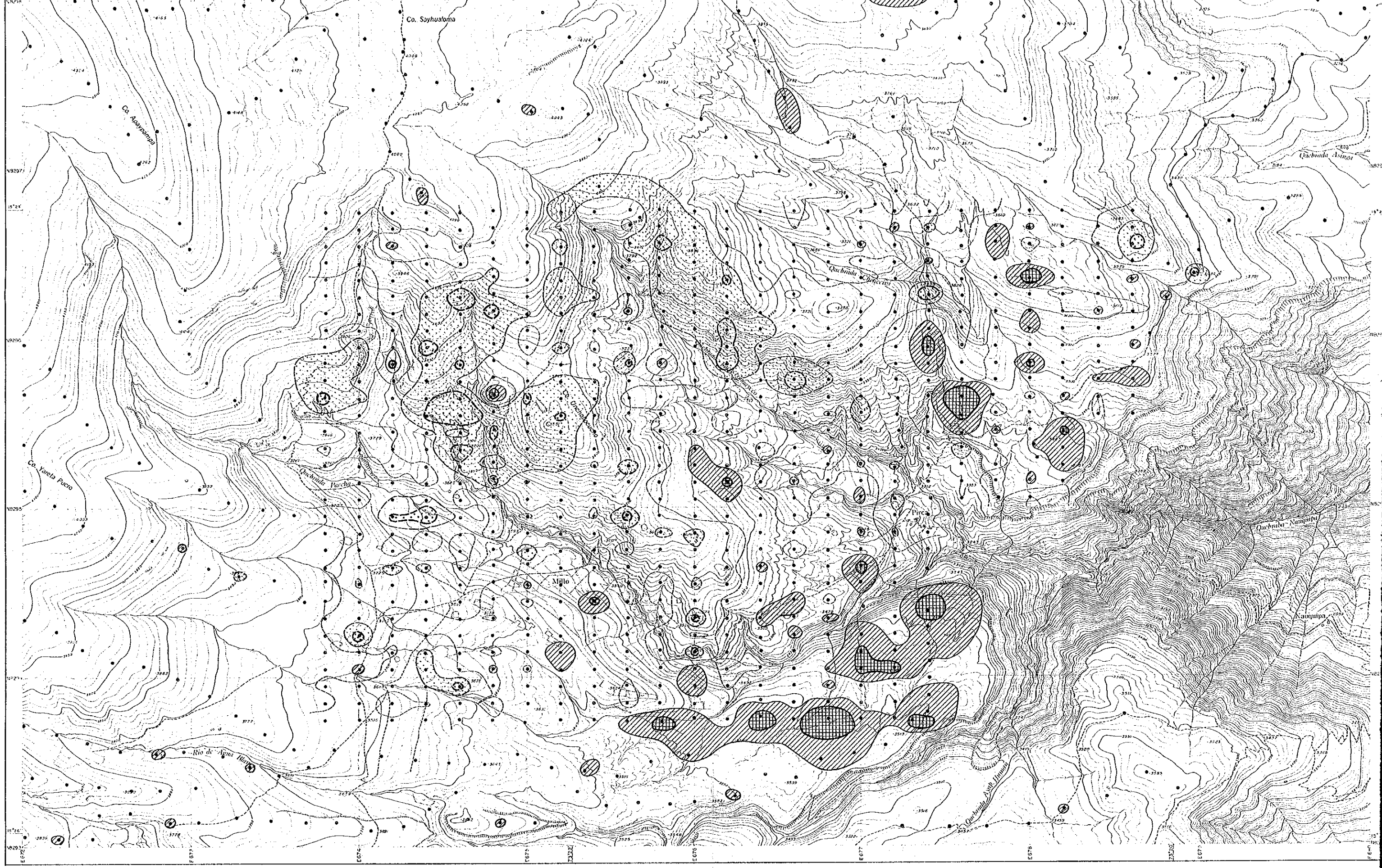



JAPAN INTERNATIONAL COOPERATION AGENCY
METAL MINING AGENCY OF JAPAN
INSTITUTO GEOLOGICO MINERO Y METALURGICO
February 1987



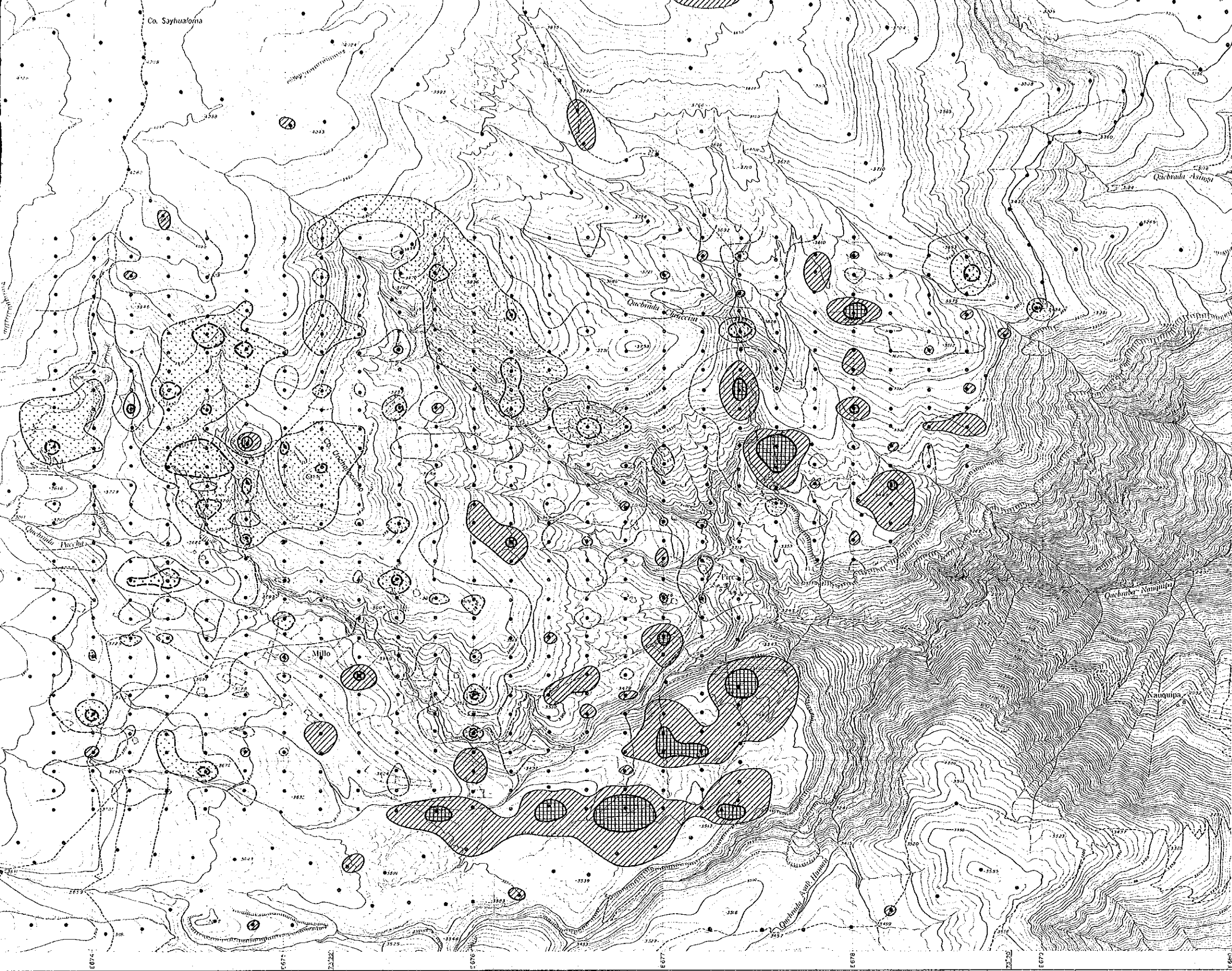
LEGEND

Symbol	Score	Classification
	M+2σ 2.25	+ Anomaly
	M+σ 1.12	+ High background
	M - 0	Background
	M-σ -1.12	- High background
	M-2σ -2.25	- Anomaly



1 : 10,000

A graphic scale bar is located at the bottom center of the map. It is marked with '0', '100', and '200' units, representing the scale of 1:10,000. The bar is a simple horizontal line with vertical tick marks at the specified intervals.



JAPAN INTERNATIONAL COOPERATION AGENCY
 METAL MINING AGENCY OF JAPAN
 INSTITUTO GEOLOGICO MINERO Y METALURGICO
 February 1987

Scale 1: 10,000
 0 0.5 1 km

LEGEND

Symbol	Score	Classification
	$M+2\sigma$ 2.25	+ Anomaly
	$M+\sigma$ 1.12	+ High background
	M 0	Background
	$M-\sigma$ -1.12	- High background
	$M-2\sigma$ -2.25	- Anomaly

1:10,000
 0 100 200