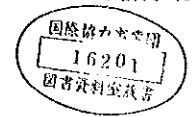


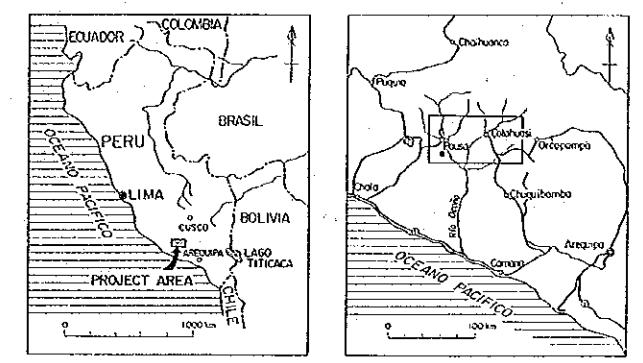
PL.18-(5)

MINERAL EXPLORATION
IN
COTAHUASI AREA
(PHASE I)

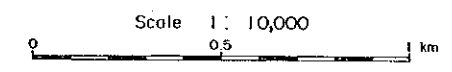


GEOCHEMICAL ANOMALY MAP OF
THE PIRCA EASTERN AREA
(Pb)

LOCATION INDEX

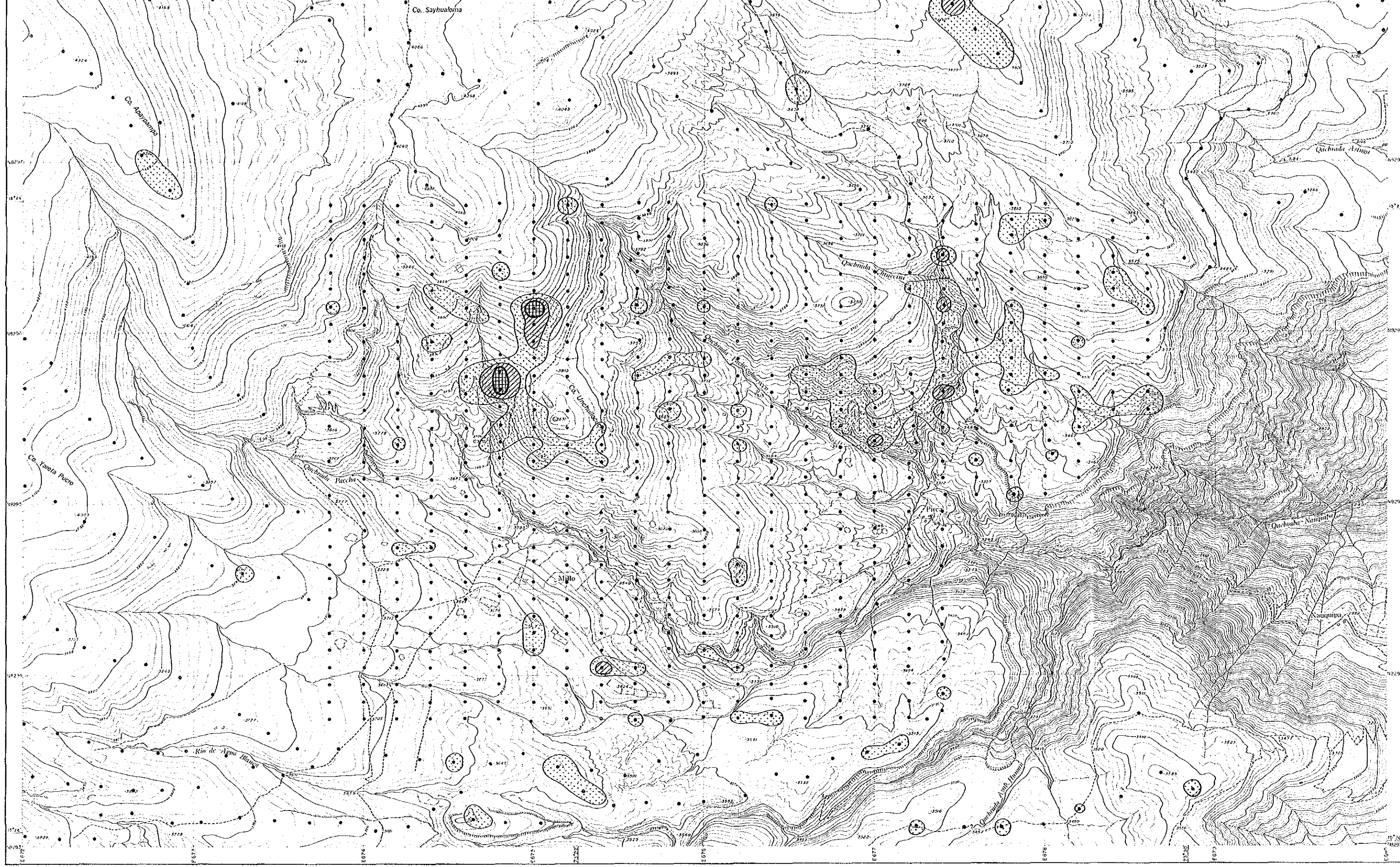


JAPAN INTERNATIONAL COOPERATION AGENCY
METAL MINING AGENCY OF JAPAN
INSTITUTO GEOLOGICO MINERO Y METALURGICO
February 1987

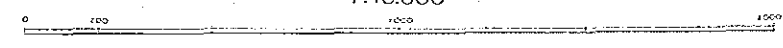


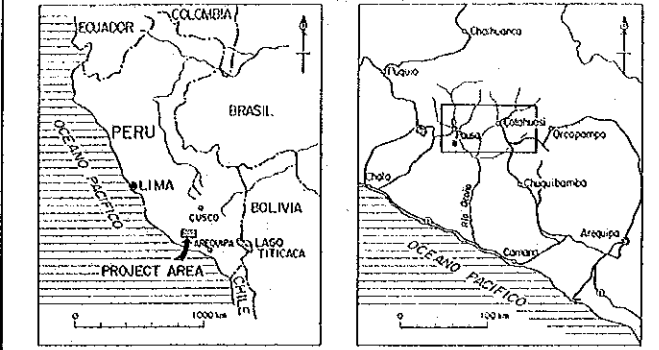
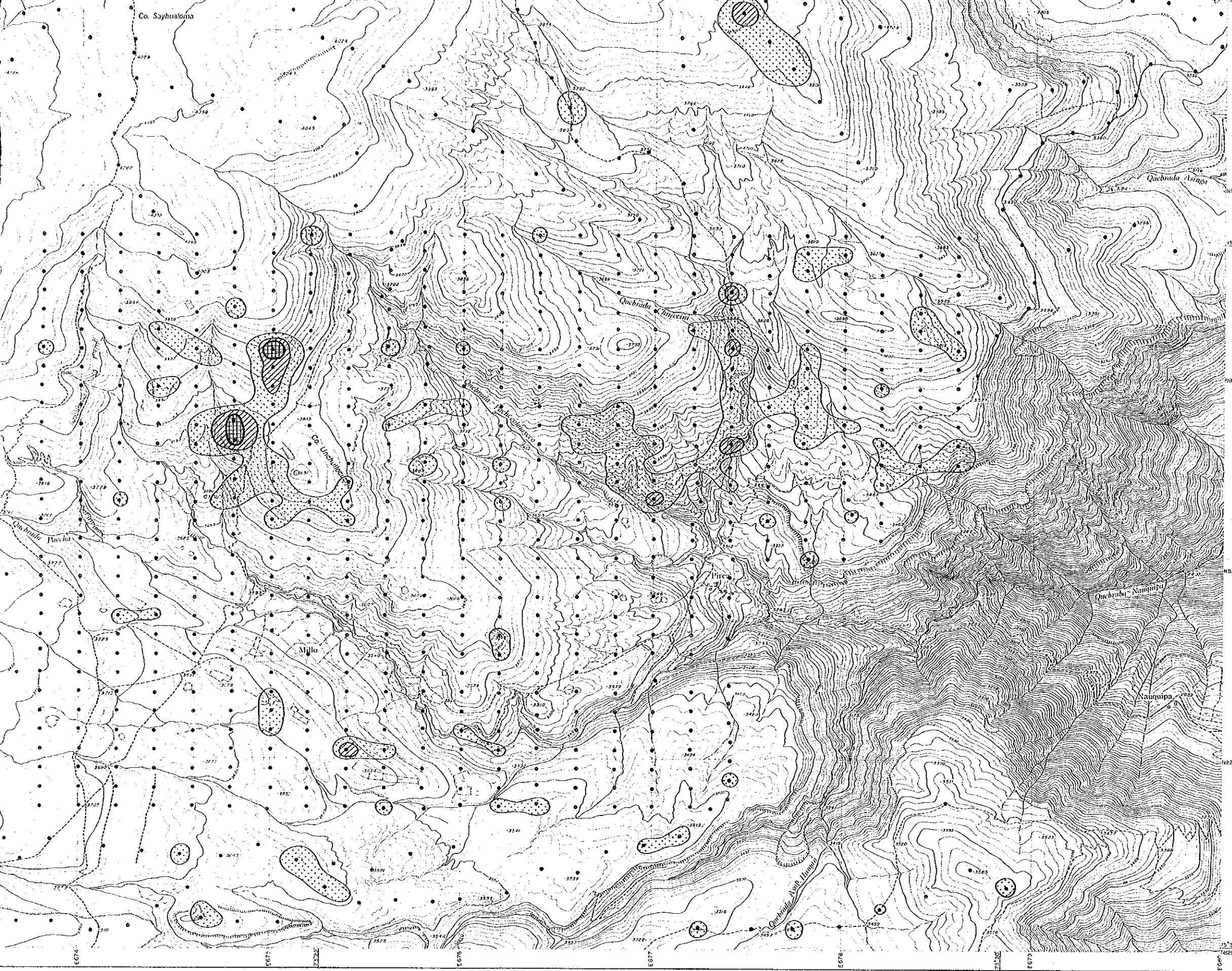
LEGEND

Symbol	Classification	Contents (in ppm)
	Anomaly A M+3σ	Pb ≥ 42.1
	Anomaly B M+2σ	42.1 > Pb ≥ 21.1
	High background M+1σ	21.1 > Pb ≥ 10.6



1:10,000





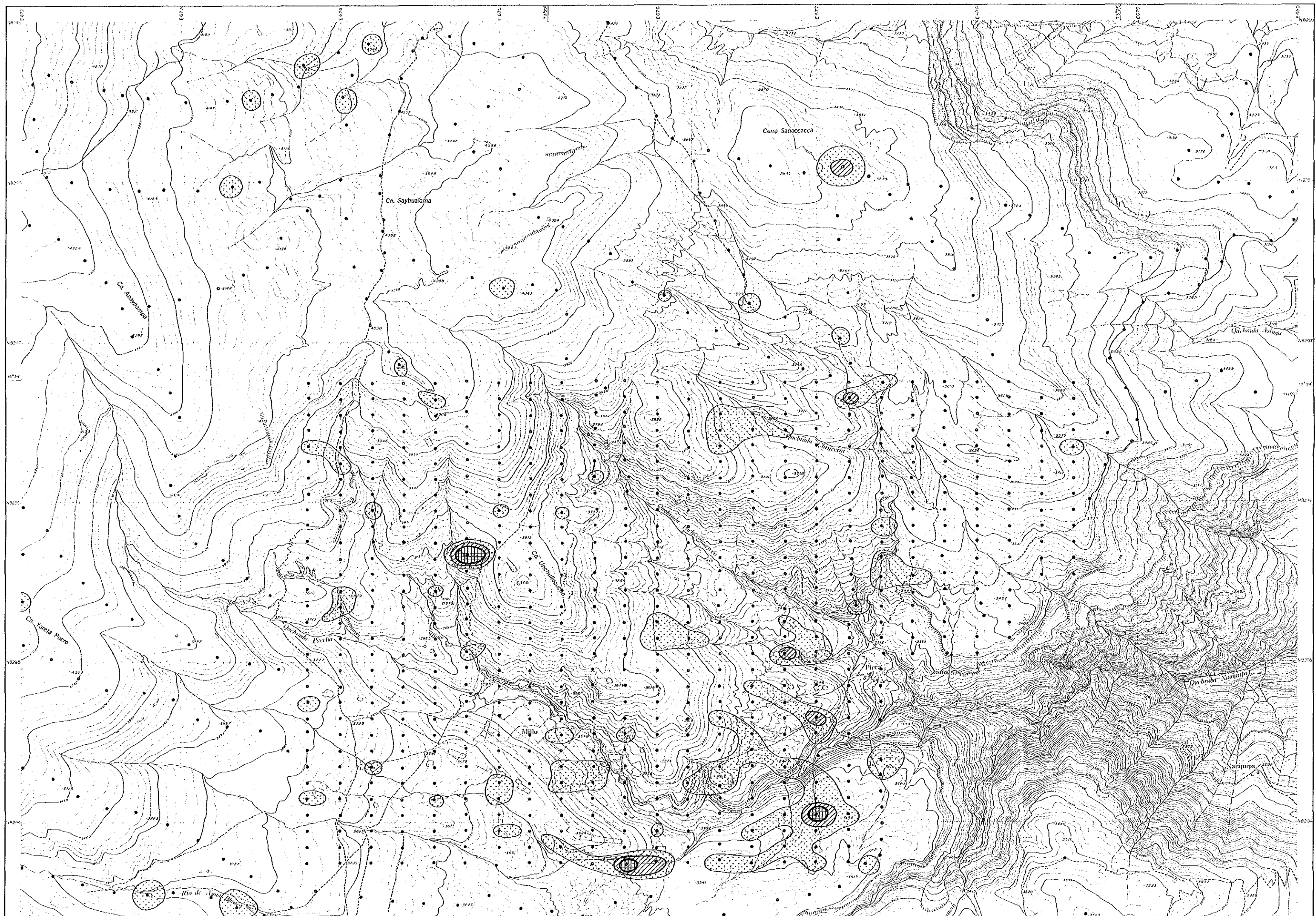
JAPAN INTERNATIONAL COOPERATION AGENCY
 METAL MINING AGENCY OF JAPAN
 INSTITUTO GEOLOGICO MINERO Y METALURGICO
 February 1987

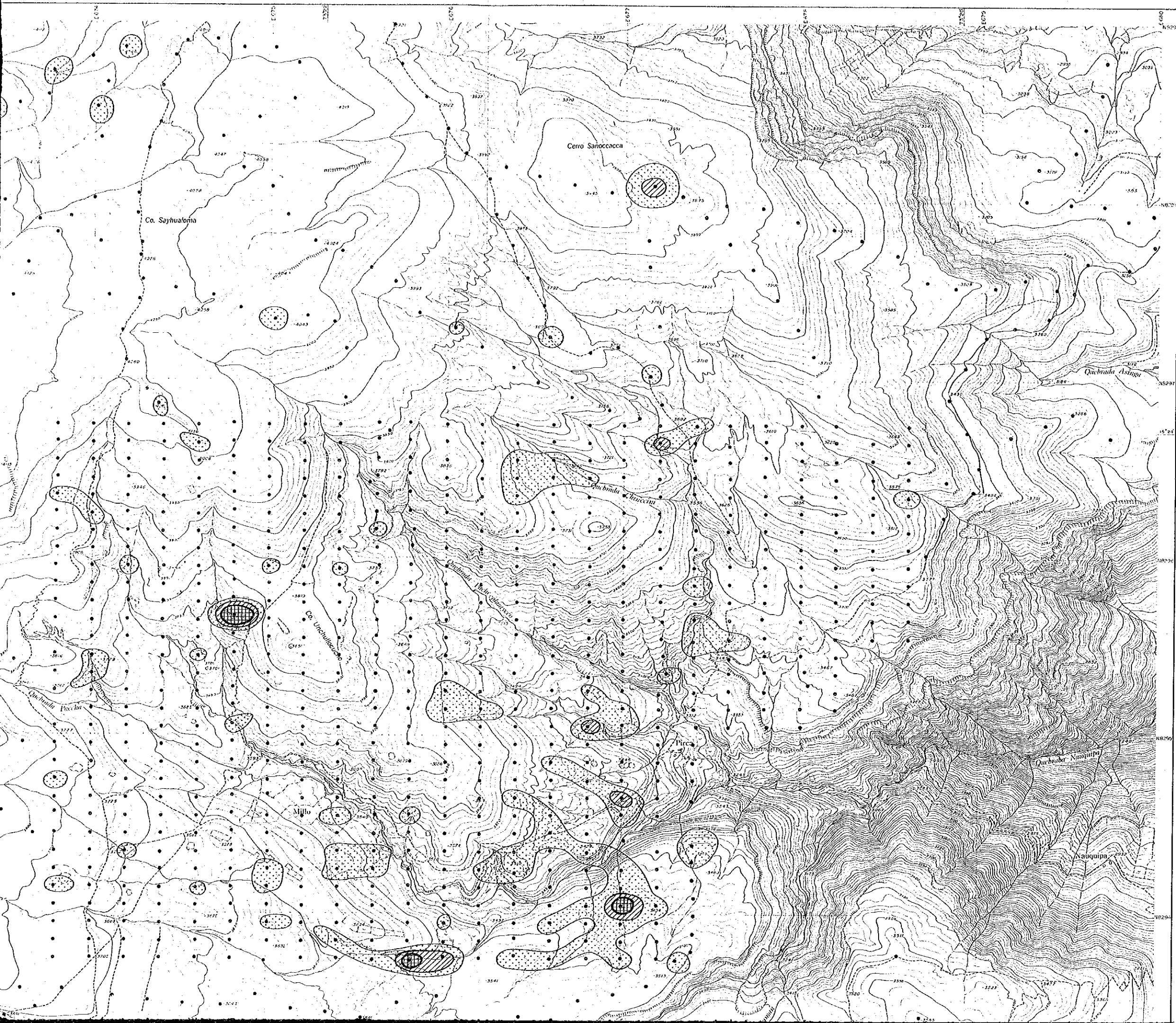
Scale 1:10,000
 0 0.5 1 km

LEGEND

Symbol	Classification	Contents (in ppm)
	Anomaly A M+3σ	Pb ≥ 42.1
	Anomaly B M+2σ	42.1 > Pb ≥ 21.1
	High background M+1σ	21.1 > Pb ≥ 10.6

1:10,000
 0 100 200 300 400 500 600 700 800 900 1000





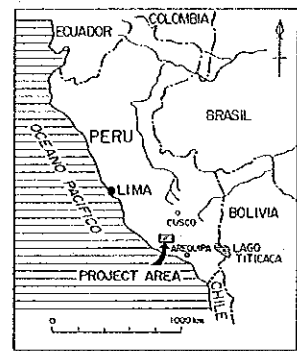
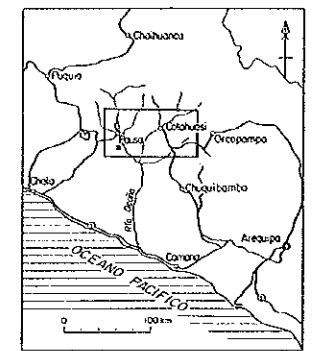
PL.18-(6)

MINERAL EXPLORATION
IN
COTAHUASI AREA
(PHASE I)

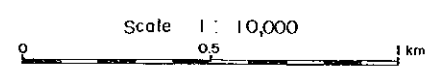
16201
圖書資料號碼

**GEOCHEMICAL ANOMALY MAP OF
THE PIRCA EASTERN AREA
(Zn)**

LOCATION INDEX

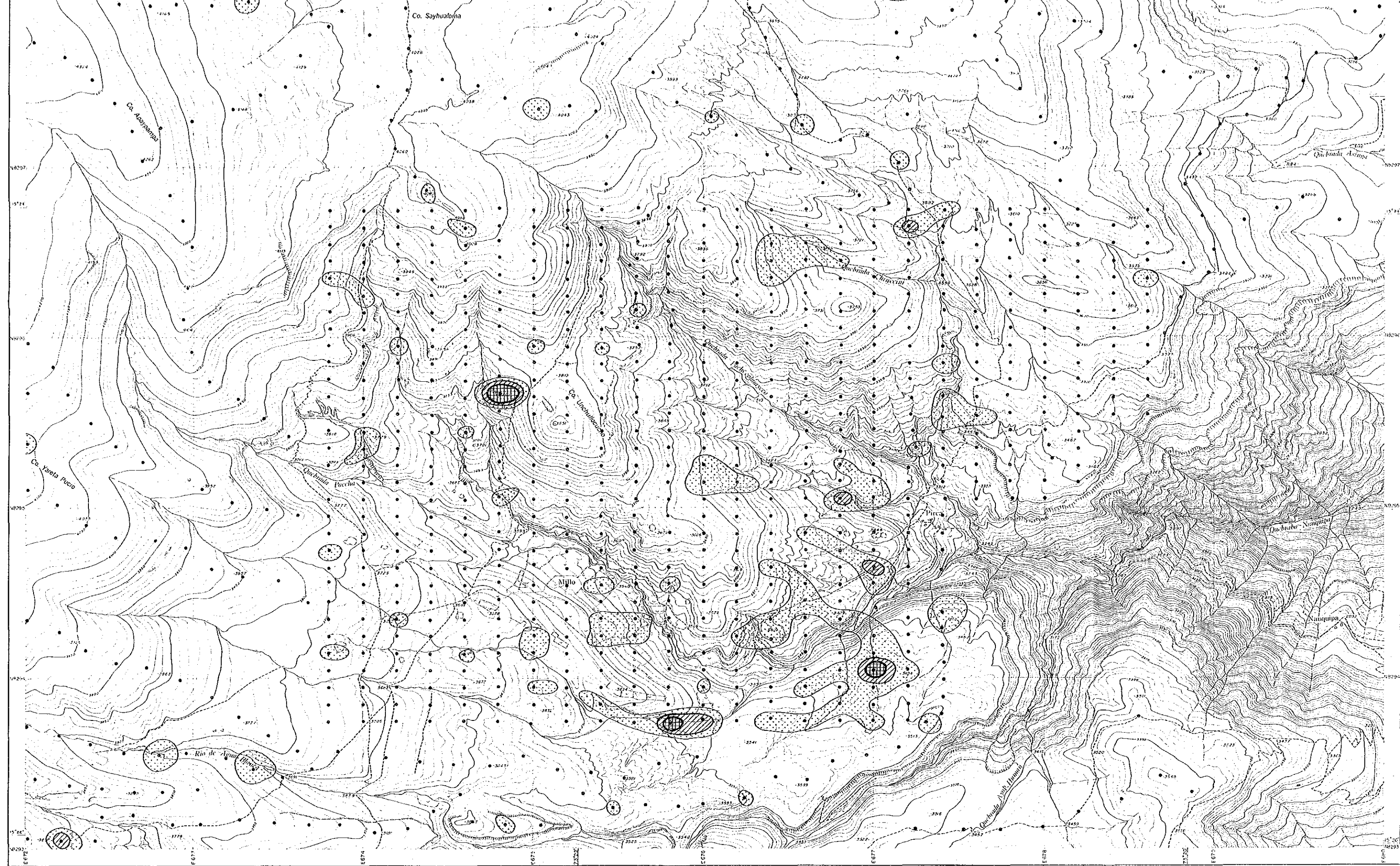



JAPAN INTERNATIONAL COOPERATION AGENCY
METAL MINING AGENCY OF JAPAN
INSTITUTO GEOLOGICO MINERO Y METALURGICO
February 1987

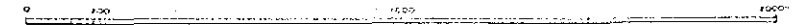


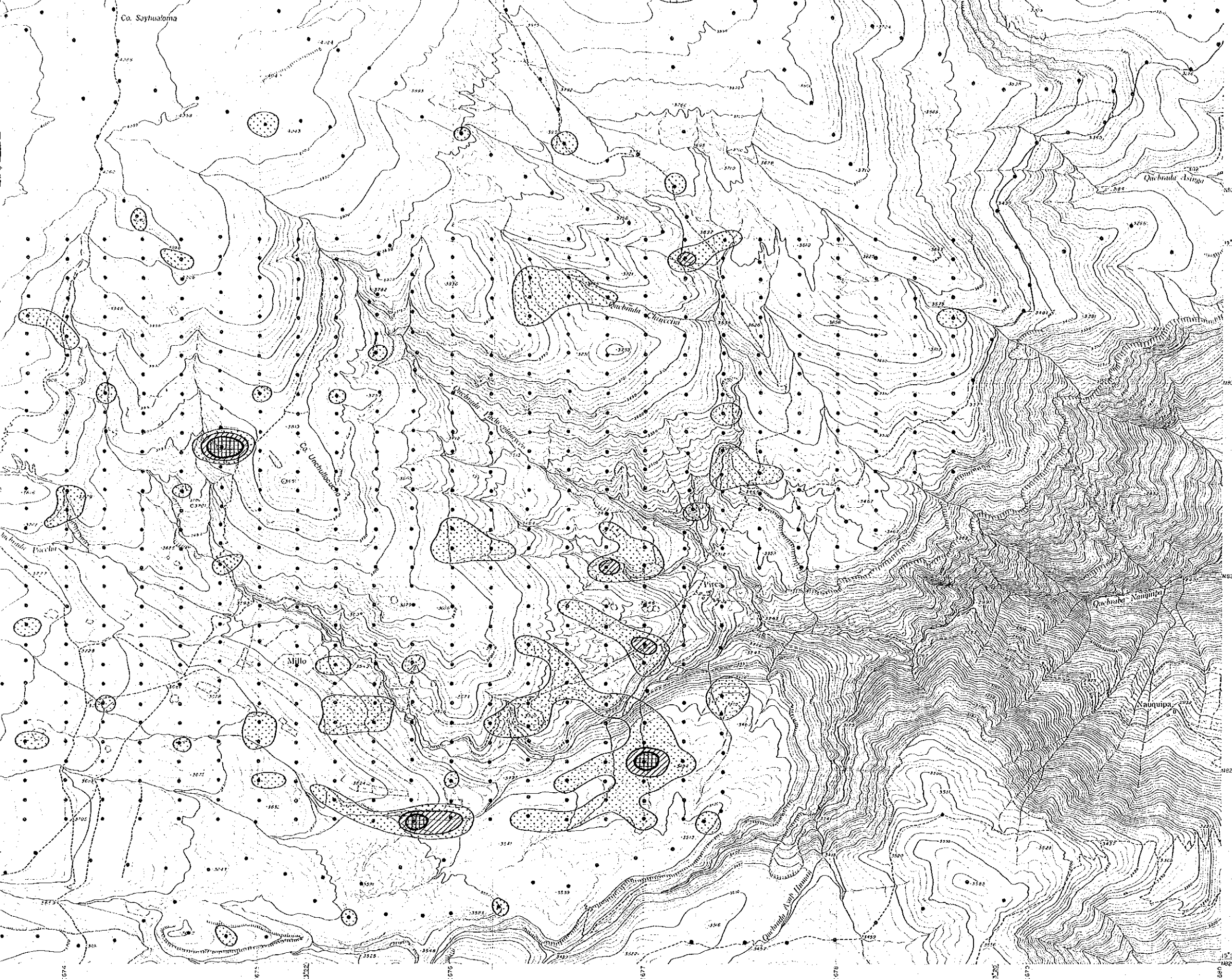
LEGEND

Symbol	Classification	Contents (in ppm)
	Anomaly A M+3σ	Zn ≥ 228.4
	Anomaly B M+2σ	228.4 > Zn ≥ 146.1
	High background M+1σ	146.1 > Zn ≥ 93.5

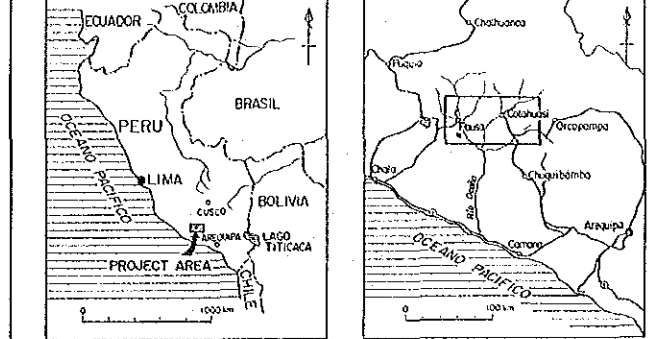


1:10,000





1:10,000



JAPAN INTERNATIONAL COOPERATION AGENCY
 METAL MINING AGENCY OF JAPAN
 INSTITUTO GEOLOGICO MINERO Y METALURGICO
 February 1987

Scale 1:10,000

LEGEND

Symbol	Classification	Contents (in ppm)
	Anomaly A M+30'	Zn ≥ 228.4
	Anomaly B M+20'	228.4 > Zn ≥ 146.1
	High background M+10'	146.1 > Zn ≥ 93.5