

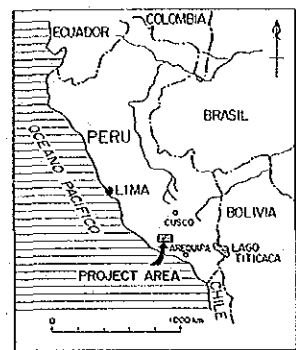

PL. 18-(3)

MINERAL EXPLORATION
IN
COTAHUASI AREA
(PHASE I)

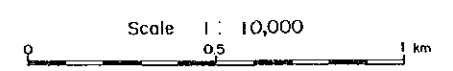
16201

GEOCHEMICAL ANOMALY MAP OF THE PIRCA EASTERN AREA (As)

LOCATION INDEX

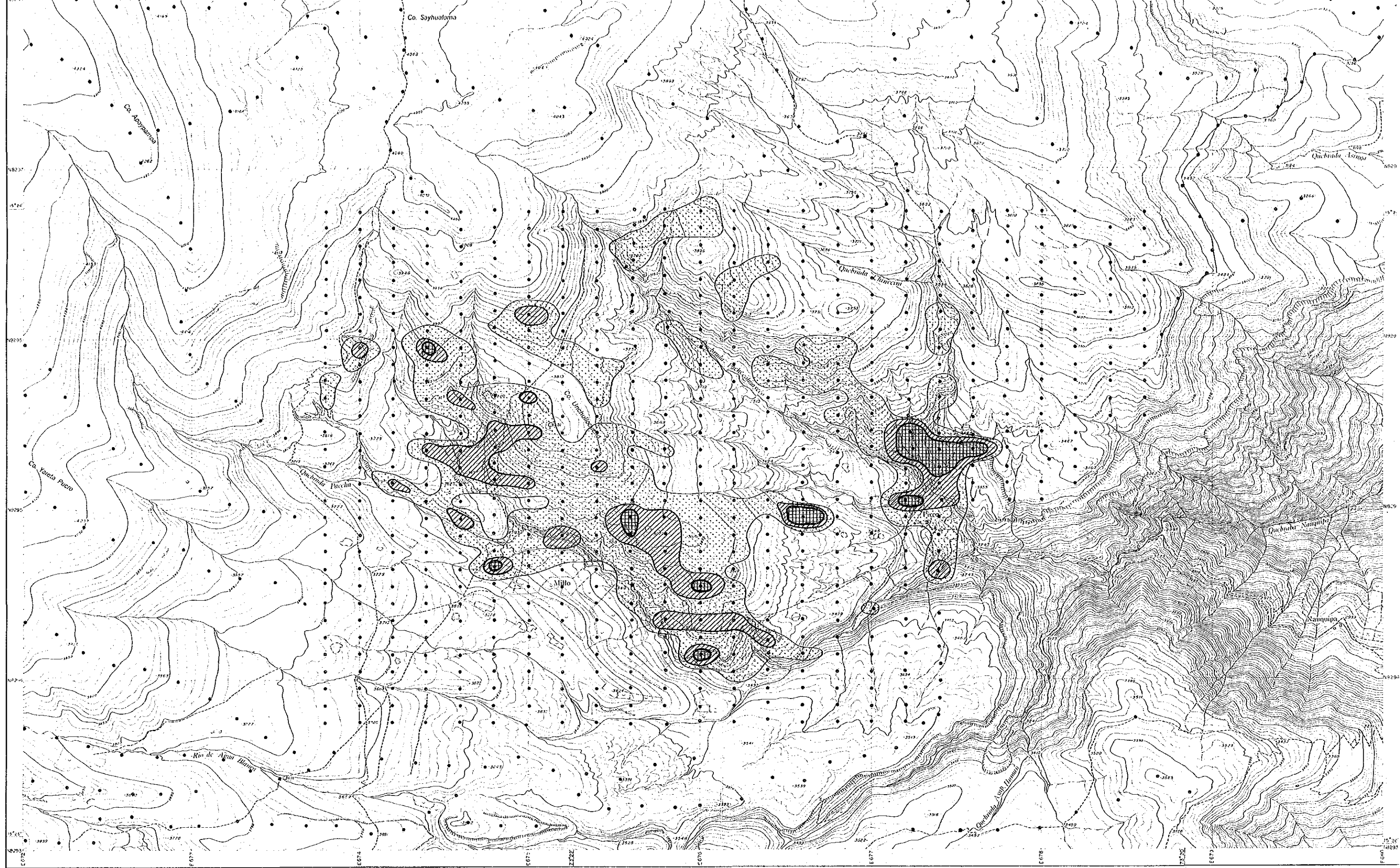



JAPAN INTERNATIONAL COOPERATION AGENCY
METAL MINING AGENCY OF JAPAN
INSTITUTO GEOLOGICO MINERO Y METALURGICO
February 1987

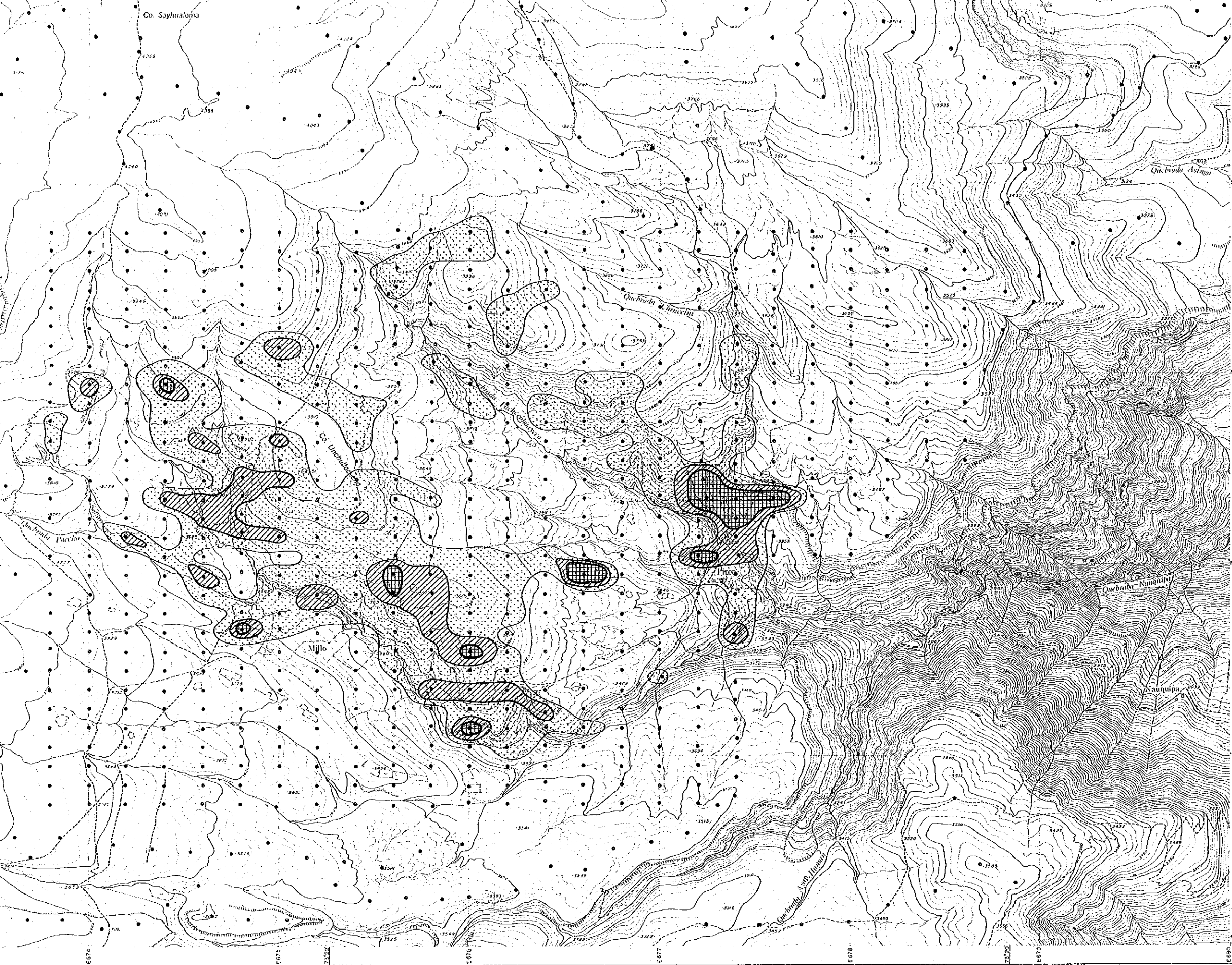


LEGEND

Symbol	Classification	Contents (in ppm)
	Anomaly A M+36	As ≥ 113.9
	Anomaly B M+26	113.9 > As ≥ 41.7
	High background M+16	41.7 > As ≥ 15.3



1:10,000



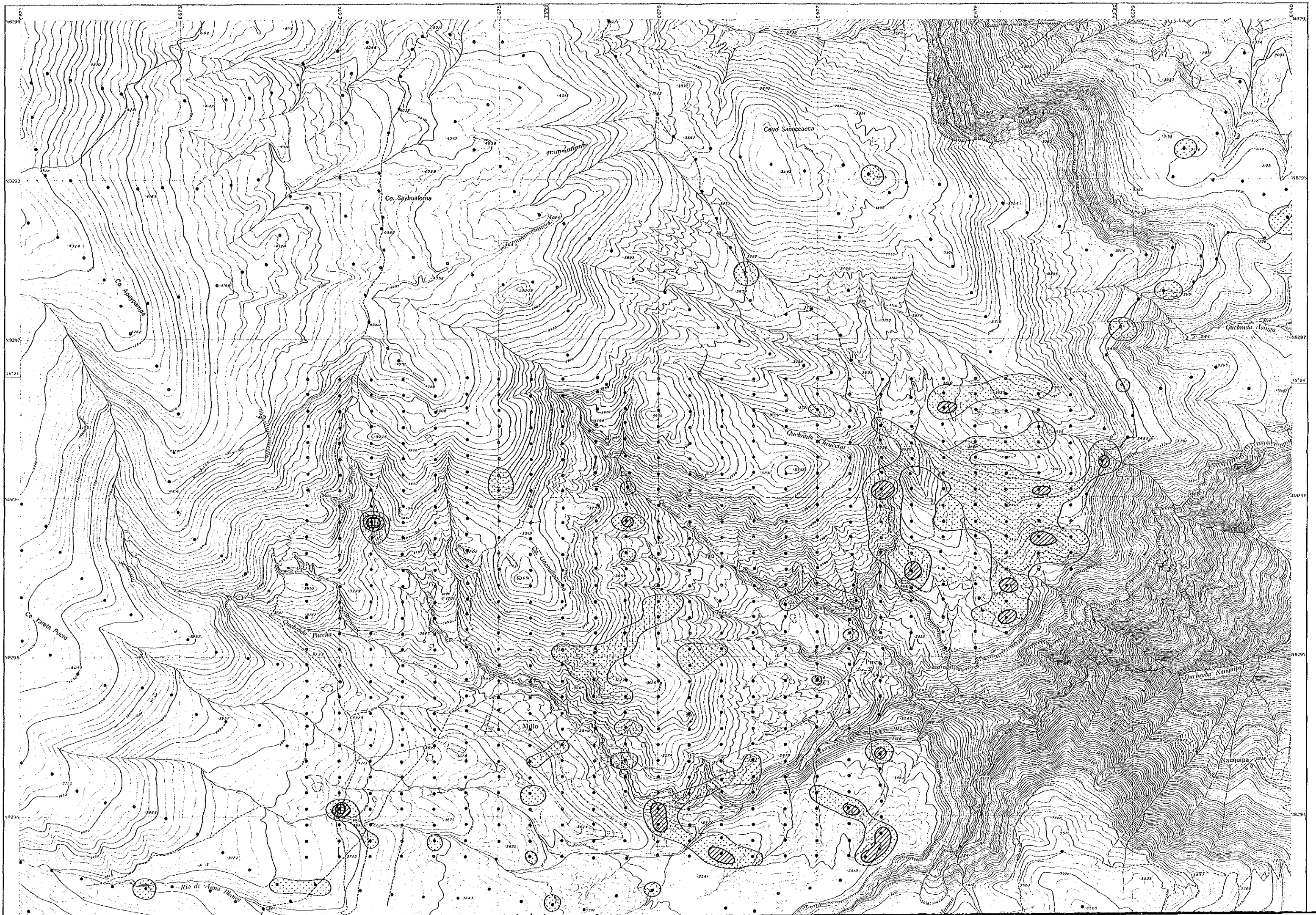
Scale 1:10,000

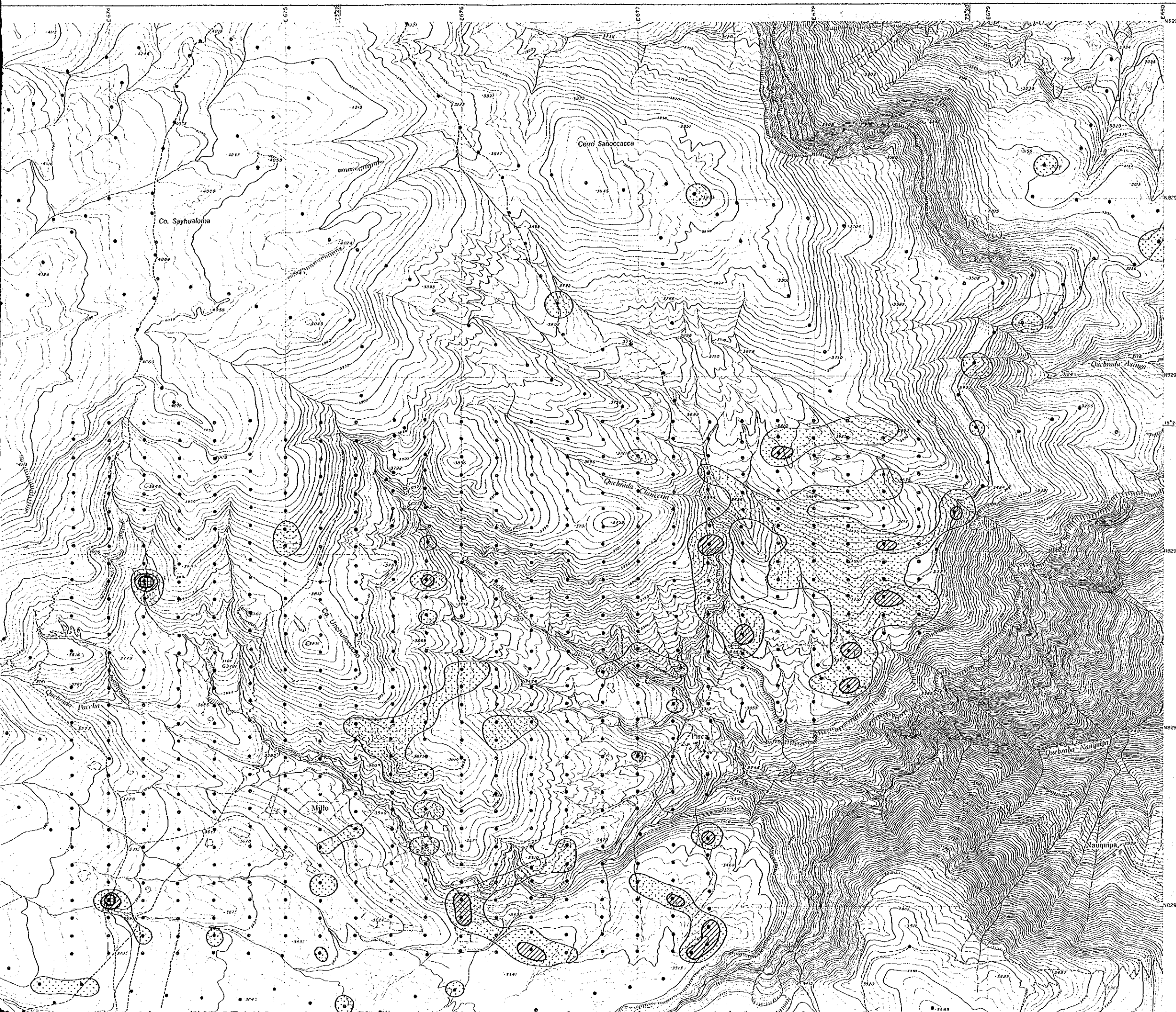
JAPAN INTERNATIONAL COOPERATION AGENCY
 METAL MINING AGENCY OF JAPAN
 INSTITUTO GEOLOGICO MINERO Y METALURGICO
 February 1987

Scale 1:10,000
 0 0.5 1 km

LEGEND

Symbol	Classification	Contents (in ppm)
	Anomaly A M+36	As ≥ 113.9
	Anomaly B M+26	113.9 > As ≥ 41.7
	High background M+16	41.7 > As ≥ 15.3



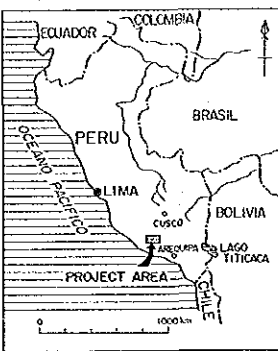
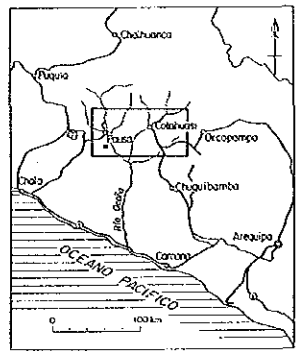


Pl. 18-(4)

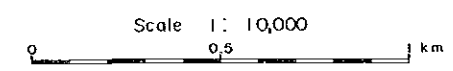
MINERAL EXPLORATION
IN
COTAHUASI AREA
(PHASE I)

GEOCHEMICAL ANOMALY MAP OF
THE PIRCA EASTERN AREA
(Cu)

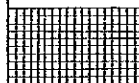

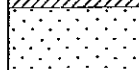
LOCATION INDEX

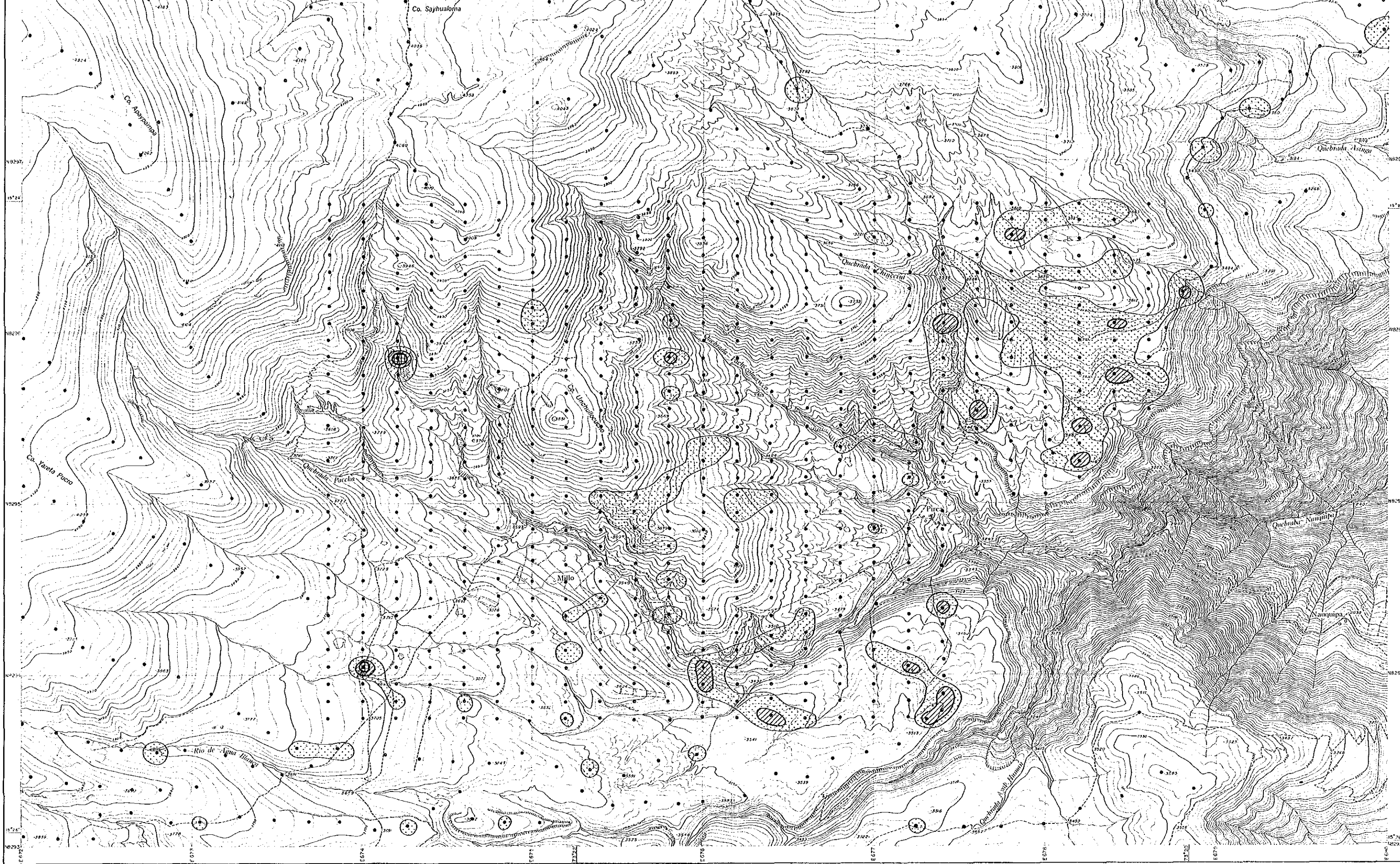



JAPAN INTERNATIONAL COOPERATION AGENCY
METAL MINING AGENCY OF JAPAN
INSTITUTO GEOLOGICO MINERO Y METALURGICO
February 1987

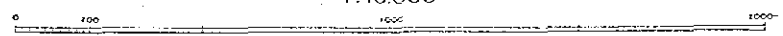


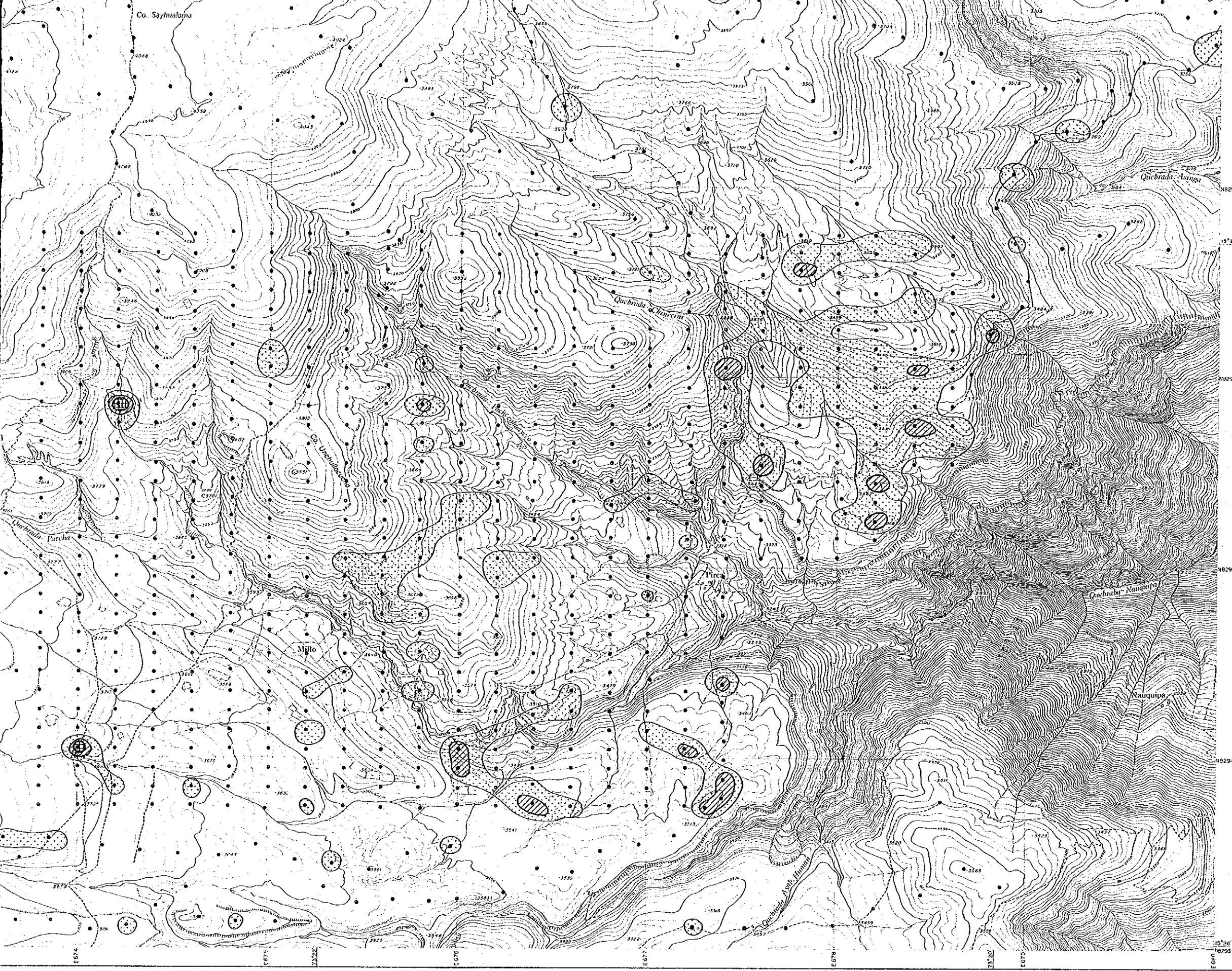
LEGEND

Symbol	Classification	Contents (in ppm)
	Anomaly A M+3σ	Cu ≥ 128.4
	Anomaly B M+2σ	128.4 > Cu ≥ 89.8
	High background M+1σ	89.8 > Cu ≥ 62.8

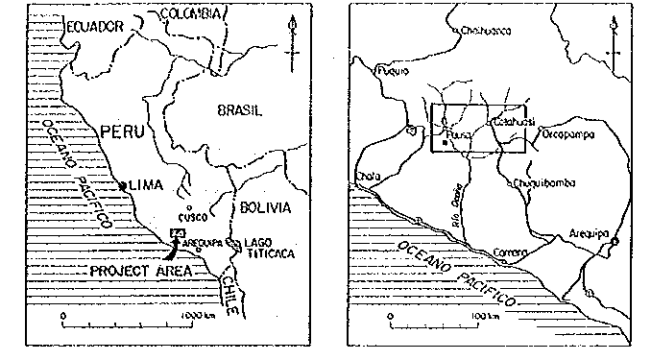


1:10,000





1:10,000
 0 100 1000
 km



JAPAN INTERNATIONAL COOPERATION AGENCY
 METAL MINING AGENCY OF JAPAN
 INSTITUTO GEOLOGICO MINERO Y METALURGICO
 February 1987

Scale 1:10,000
 0 0.5 1 km

LEGEND

Symbol	Classification	Contents (in ppm)
	Anomaly A	Cu \geq 128.4
M+136		
	Anomaly B	128.4 > Cu \geq 89.8
M+26		
	High background	89.8 > Cu \geq 62.8
M+16		