

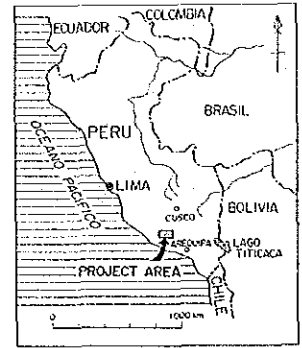

PL. 15

MINERAL EXPLORATION
IN
COTAHUASI AREA
(PHASE I)

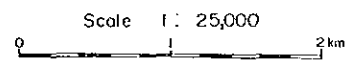
国際協力事業団
16201
図書史料室蔵書

GEOCHEMICAL INTERPRETATION MAP OF THE MARCABAMBA AREA (6 ELEMENTS)





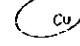
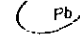

LOCATION INDEX

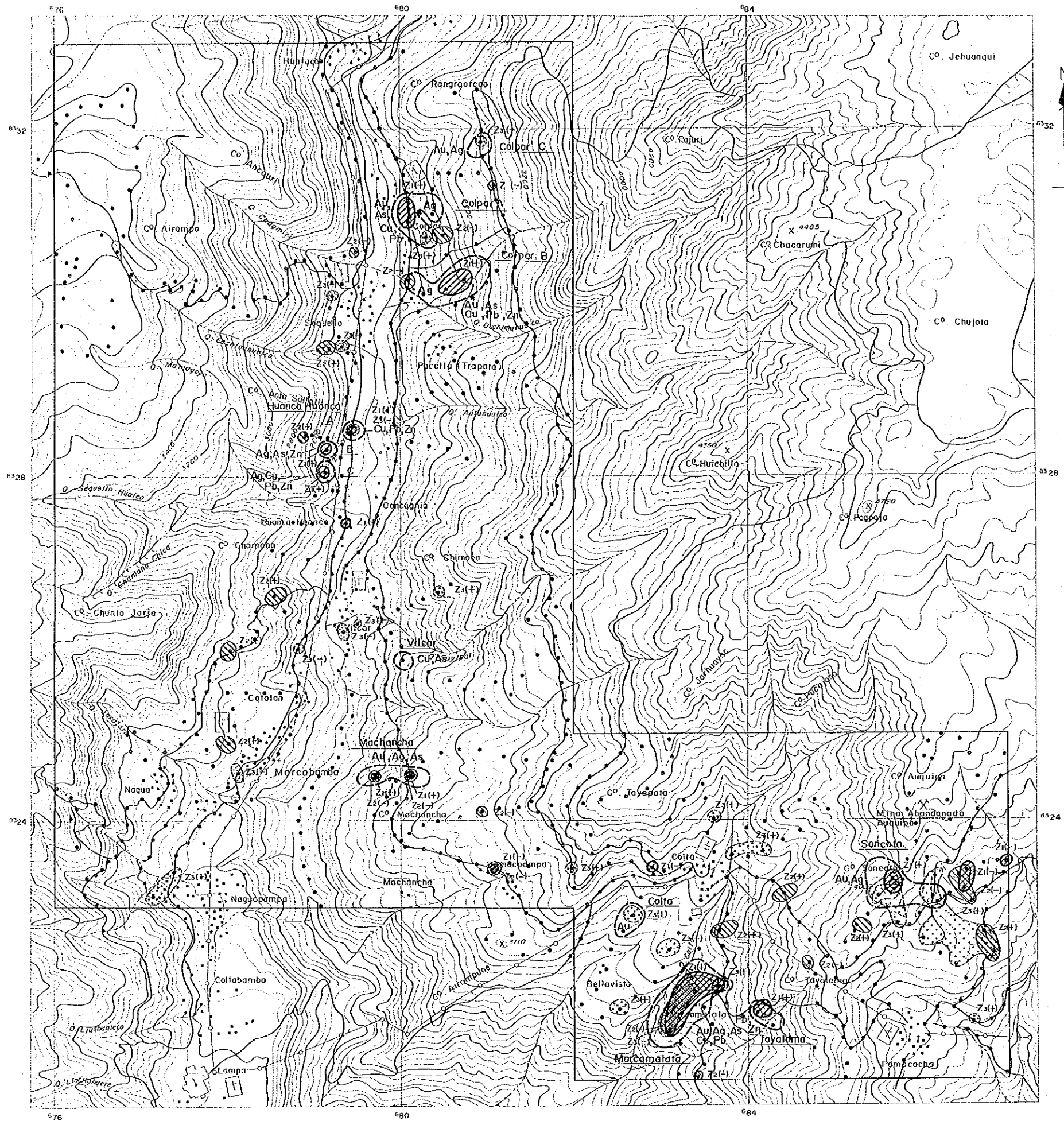



JAPAN INTERNATIONAL COOPERATION AGENCY
METAL MINING AGENCY OF JAPAN
INSTITUTO GEOLOGICO MINERO Y METALURGICO
February 1987



LEGEND

-  Anomaly Zone
- Vilcar Name of Anomaly Zone
-  Au Anomaly : Au \geq 73.0 ppb
-  Ag Anomaly : Ag \geq 1.15 ppm
-  As Anomaly : As \geq 72.9 ppm
-  Cu Anomaly : Cu \geq 72.5 ppm
-  Pb Anomaly : Pb \geq 83.9 ppm
-  Zn Anomaly : Zn \geq 174.6 ppm

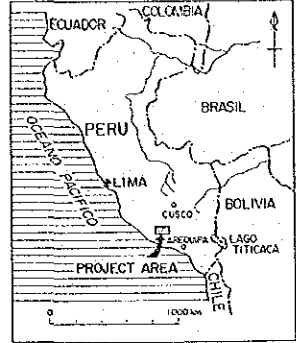
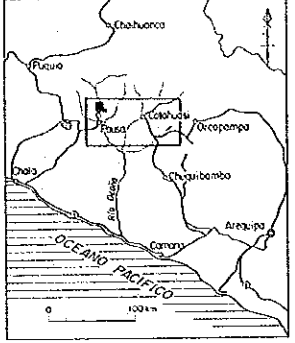


PL. 17

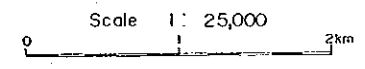
MINERAL EXPLORATION
IN
COTAHUASI AREA
(PHASE II)

GEOCHEMICAL INTERPRETATION MAP OF
THE MARCABAMBA AREA
(COMPOSITE DATA)

LOCATION INDEX

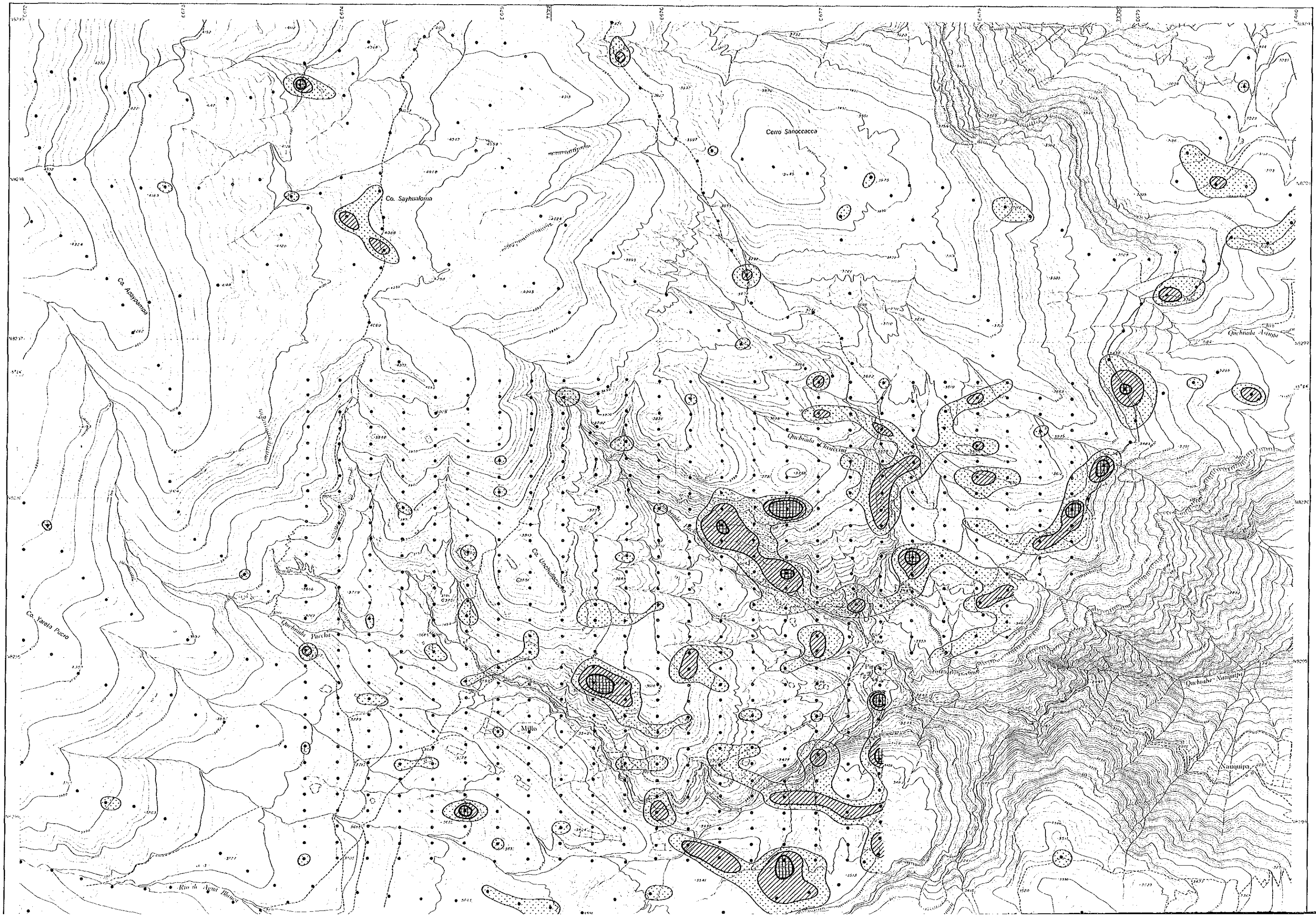



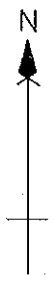
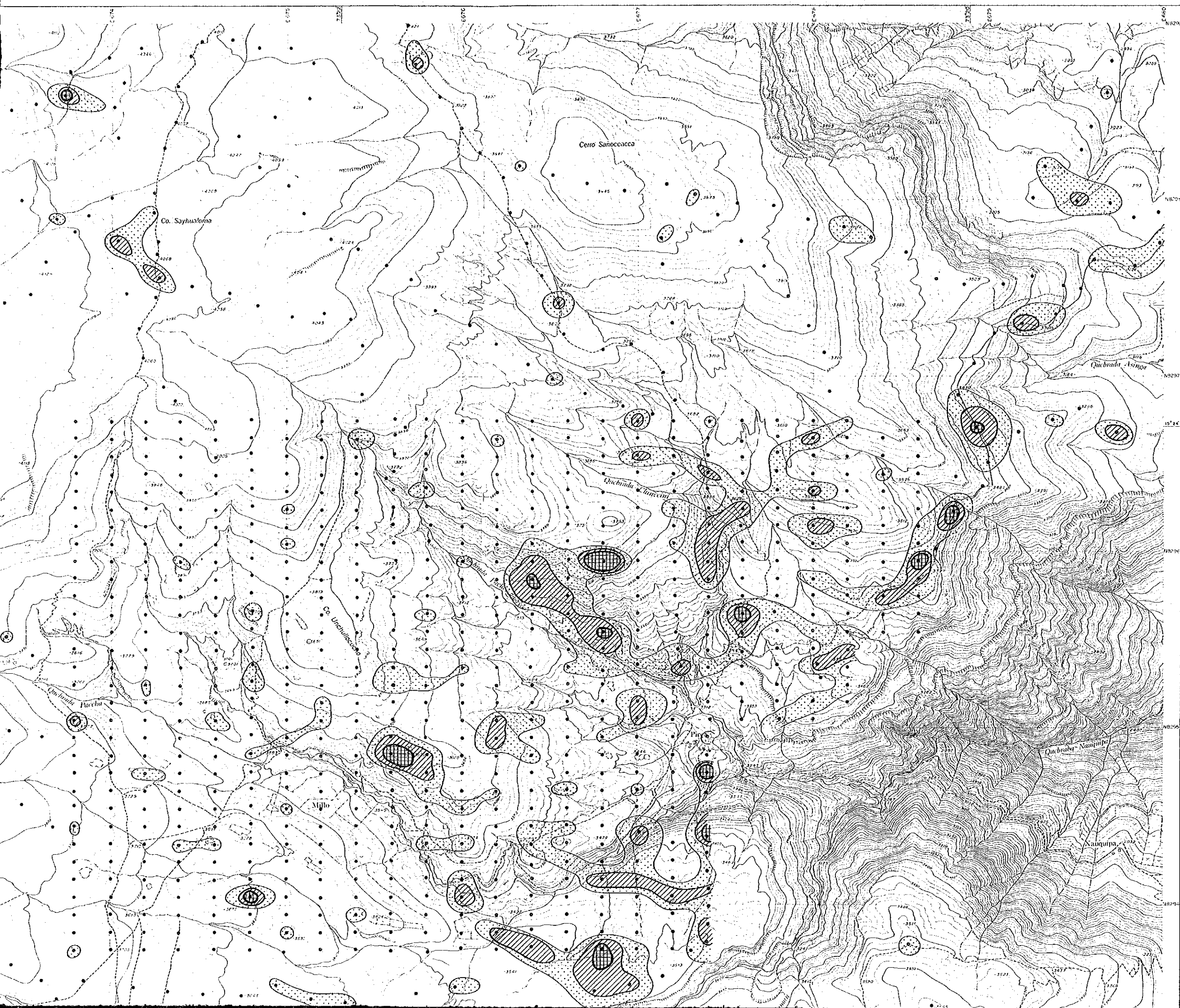
JAPAN INTERNATIONAL COOPERATION AGENCY
METAL MINING AGENCY OF JAPAN
INSTITUTO GEOLOGICO MINERO Y METALURGICO
February 1987



LEGEND

- Geochemical Anomaly
<Univariate Analysis>
- Anomaly Zone and Anomalous Elements
 - Colpar A Name of Anomaly Zone
- <Principal Components Analysis>
- 1st Principal Component
 - Z1(+) + Anomaly
 - Z1(-) - Anomaly
 - 2nd Principal Component
 - Z2(+) + Anomaly
 - Z2(-) - Anomaly
 - 3rd Principal Component
 - Z3(+) + Anomaly
 - Z3(-) - Anomaly





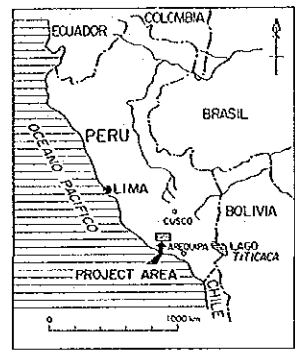
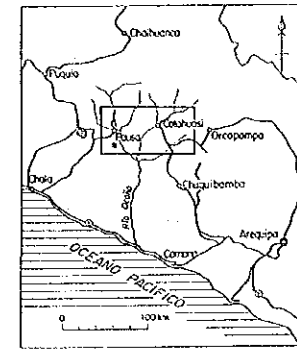
PL. 18-(1)

MINERAL EXPLORATION
IN
COTAHUASI AREA
(PHASE II)

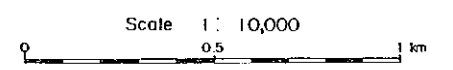
16201
 国産格付
 国産格付

GEOCHEMICAL ANOMALY MAP OF THE PIRCA EASTERN AREA (Au)

LOCATION INDEX

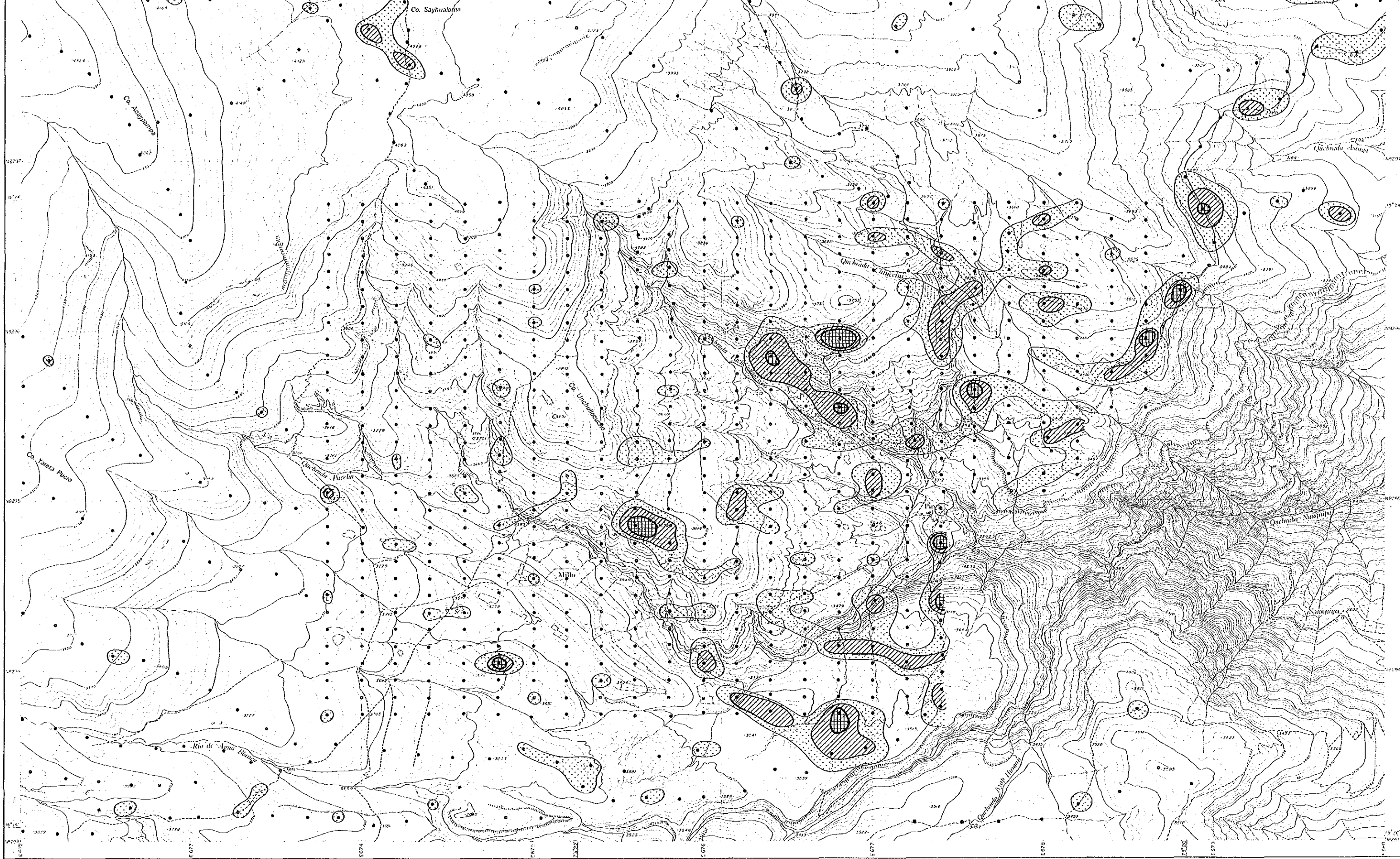



JAPAN INTERNATIONAL COOPERATION AGENCY
METAL MINING AGENCY OF JAPAN
INSTITUTO GEOLOGICO MINERO Y METALURGICO
February 1987

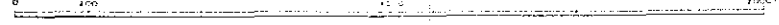


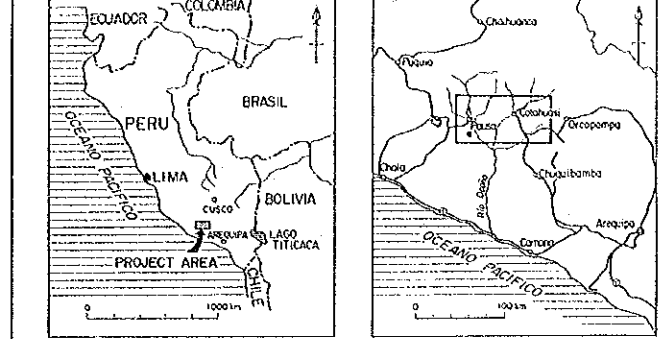
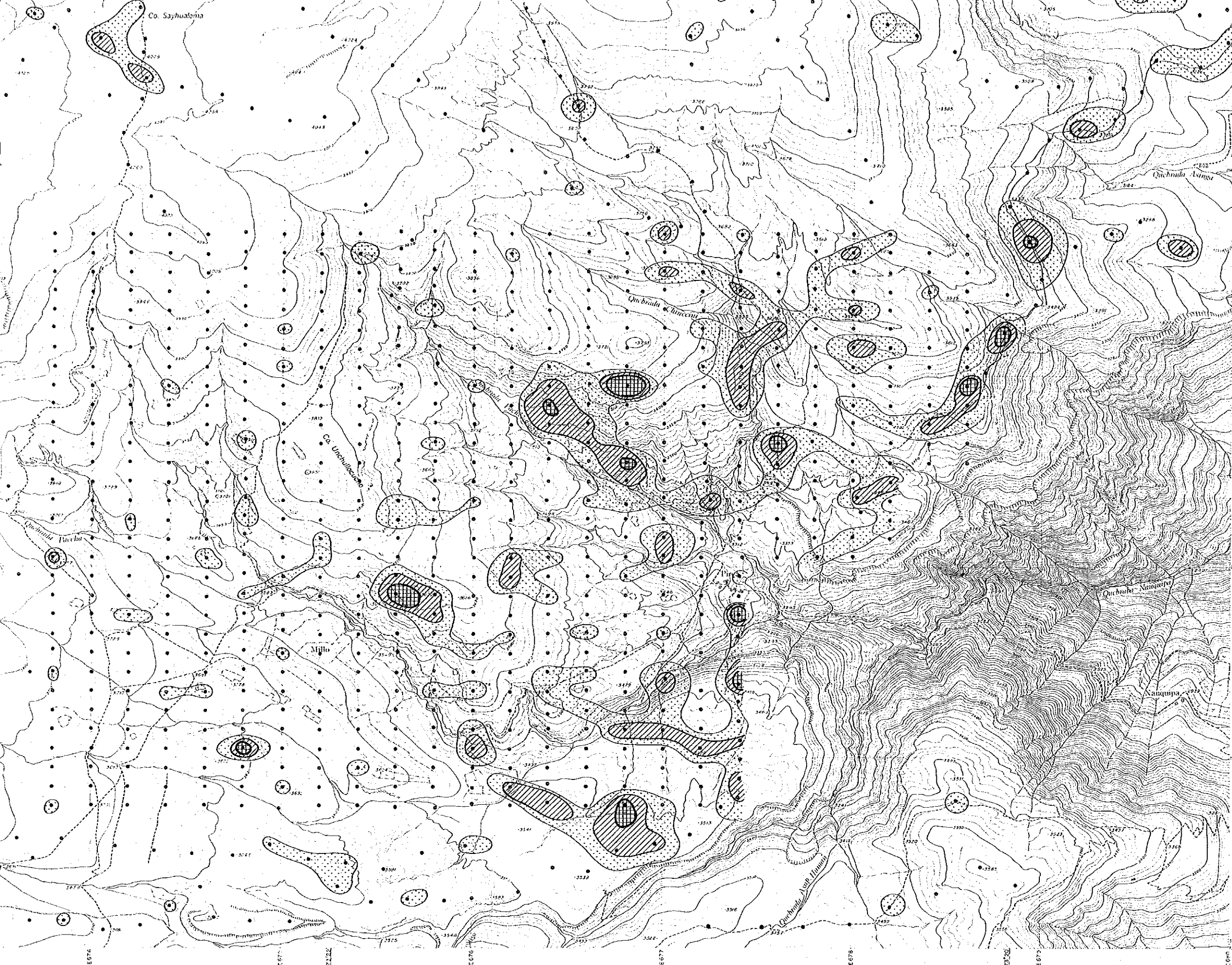
LEGEND

Symbol	Classification	Contents (in ppb)
	Anomaly A M+3σ	Au ≥ 16.7
	Anomaly B M+2σ	16.7 > Au ≥ 7.8
	High background M+1σ	7.8 > Au ≥ 3.6

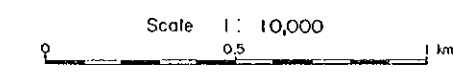


1:10,000



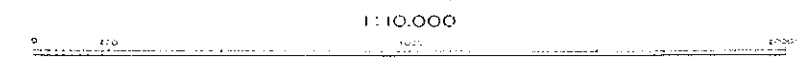


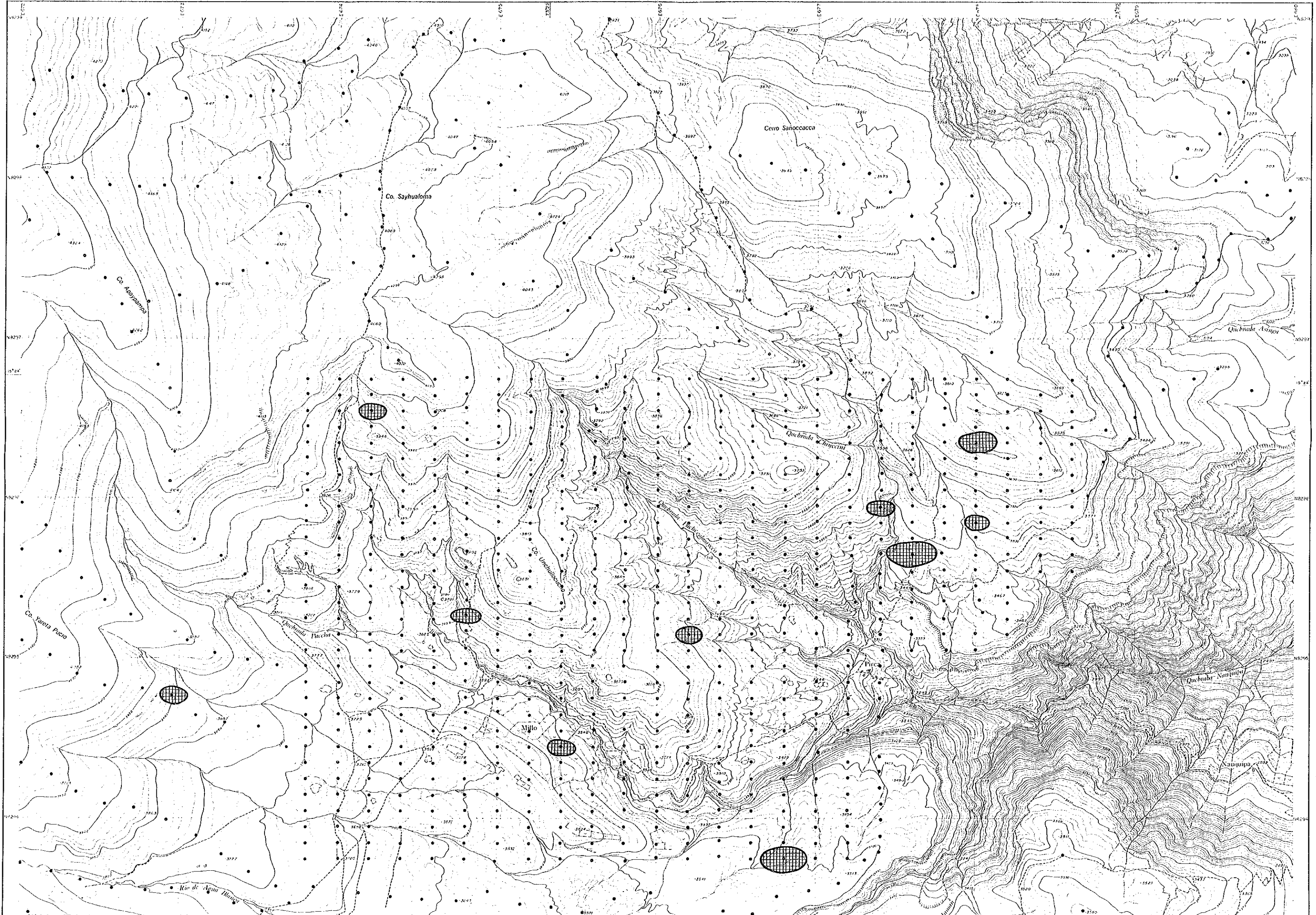
JAPAN INTERNATIONAL COOPERATION AGENCY
 METAL MINING AGENCY OF JAPAN
 INSTITUTO GEOLOGICO MINERO Y METALURGICO
 February 1987

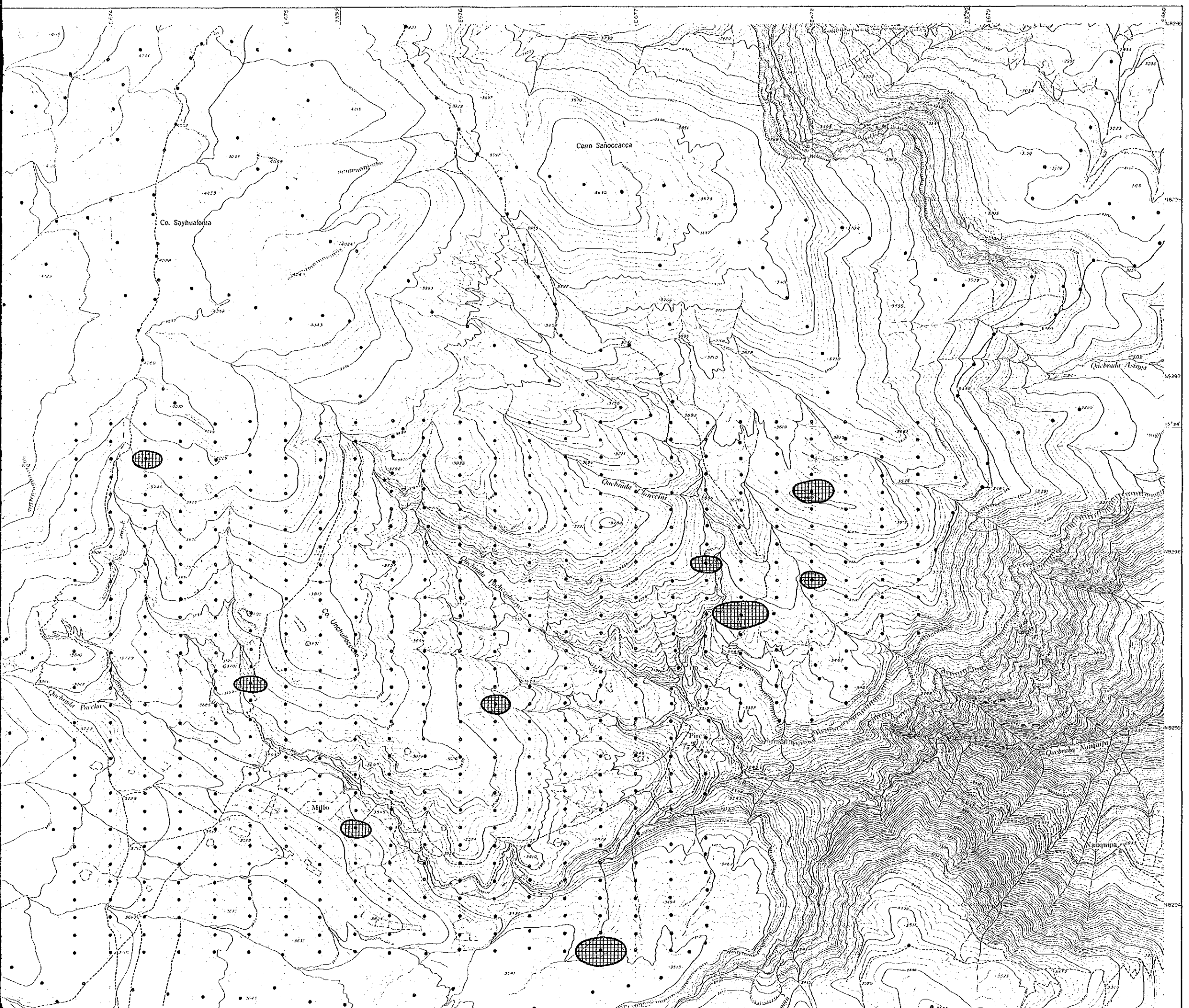


LEGEND

Symbol	Classification	Contents (in ppb)
	Anomaly A M+3σ	Au ≥ 16.7
	Anomaly B M+2σ	16.7 > Au ≥ 7.8
	High background M+1σ	7.8 > Au ≥ 3.6








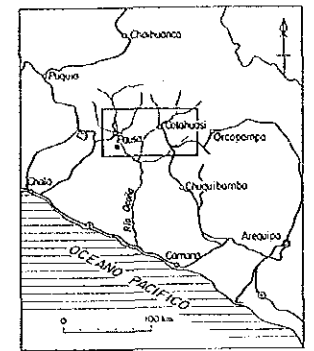
PL.18-(2)

MINERAL EXPLORATION
IN
COTAHUASI AREA
(PHASE II)

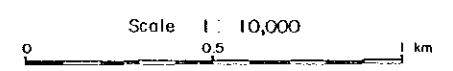
国際協力事業団
16201
国書資料室蔵

GEOCHEMICAL ANOMALY MAP OF THE PIRCA EASTERN AREA (Ag)

LOCATION INDEX

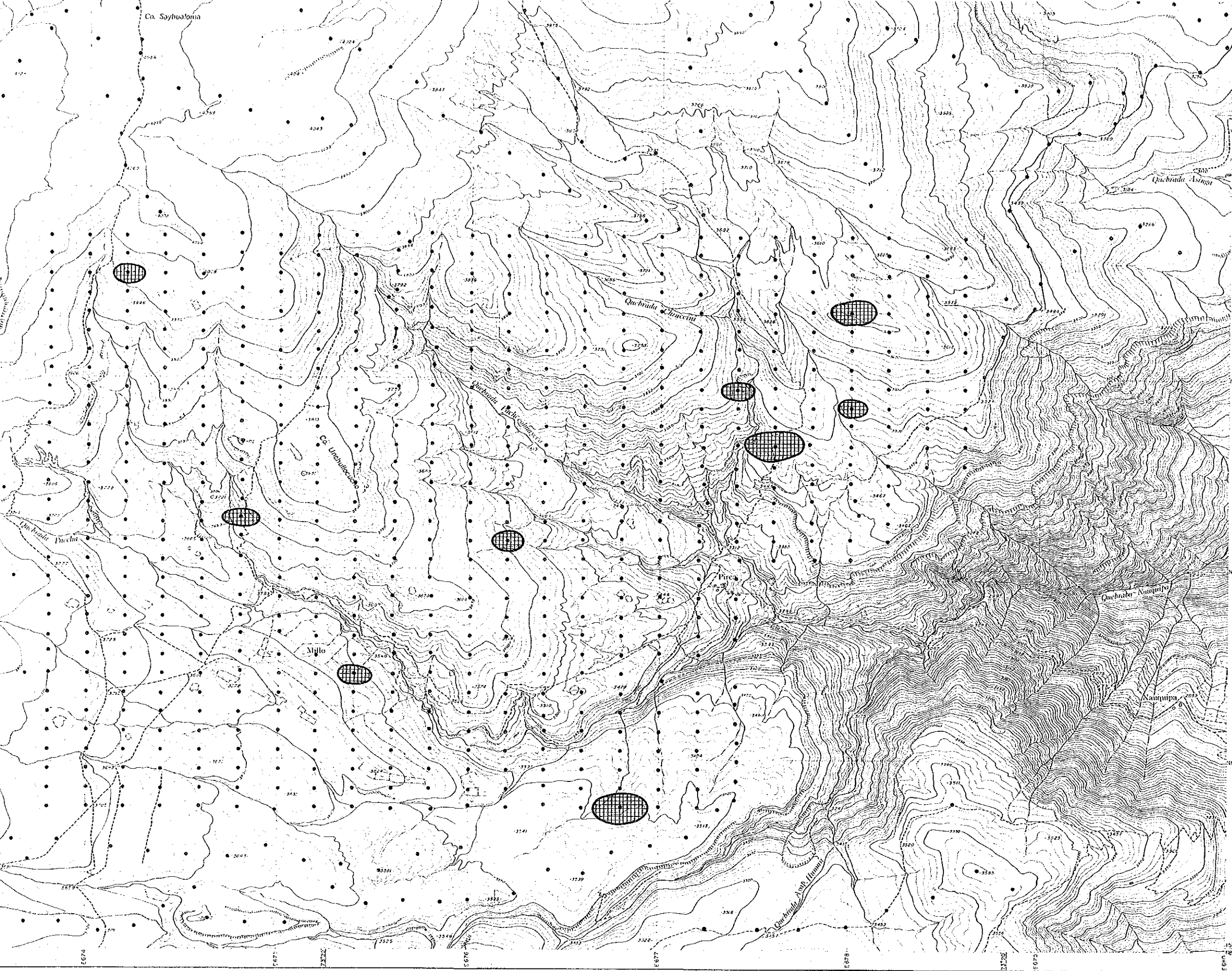



JAPAN INTERNATIONAL COOPERATION AGENCY
METAL MINING AGENCY OF JAPAN
INSTITUTO GEOLOGICO MINERO Y METALURGICO
February 1987



LEGEND

Symbol	Classification	Contents (in ppm)
	Anomaly A M+36	Ag ≥ 0.13



Scale 1:10,000

JAPAN INTERNATIONAL COOPERATION AGENCY
 METAL MINING AGENCY OF JAPAN
 INSTITUTO GEOLOGICO MINERO Y METALURGICO
 February 1987

Scale 1:10,000

LEGEND

Symbol	Classification	Contents (in ppm)
	Anomaly A M+36	Ag ≥ 0.13