

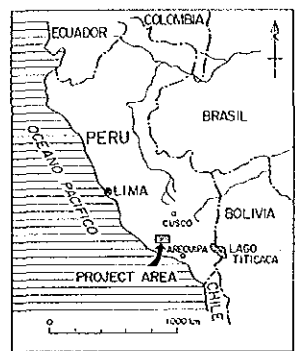
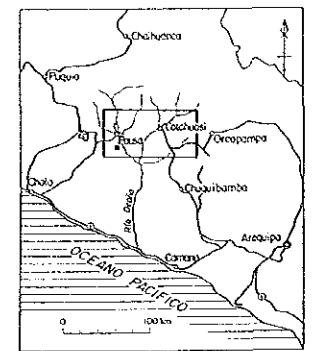
PL. 18-(4)

MINERAL EXPLORATION
IN
COTAHUASI AREA
(PHASE I)

18200
18200

GEOCHEMICAL ANOMALY MAP OF
THE PIRCA EASTERN AREA
(Cu)

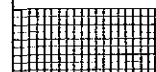
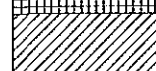
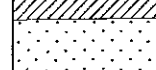
LOCATION INDEX

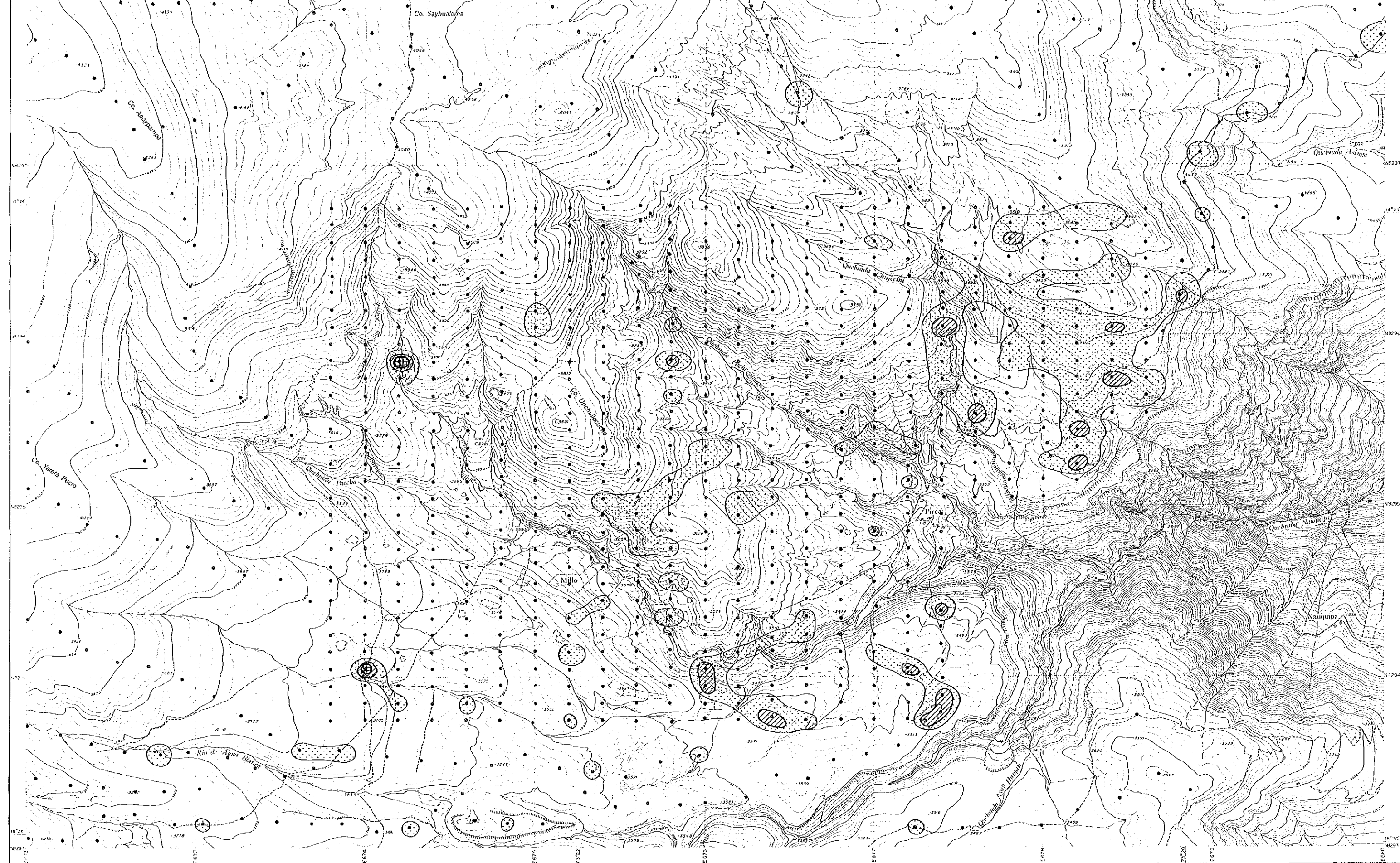



JAPAN INTERNATIONAL COOPERATION AGENCY
METAL MINING AGENCY OF JAPAN
INSTITUTO GEOLOGICO MINERO Y METALURGICO
February 1987

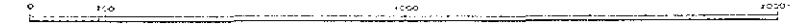
Scale 1 : 10,000
0 0.5 1 km

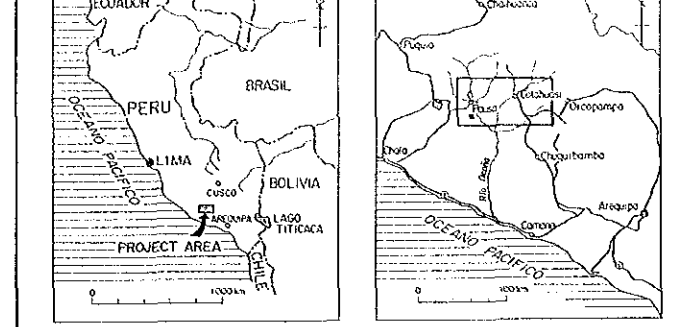
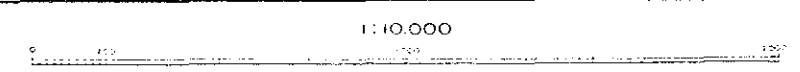
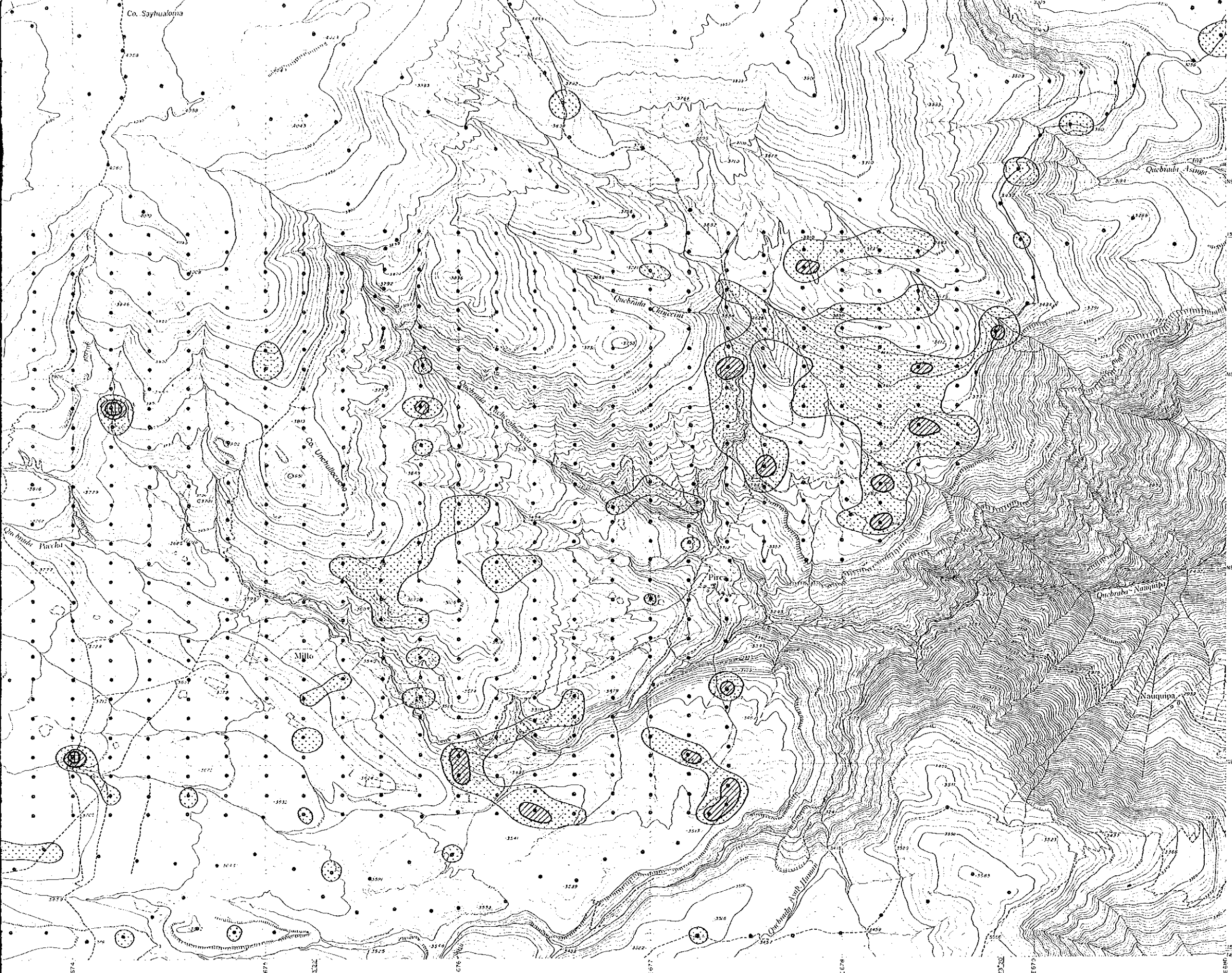
LEGEND

Symbol	Classification	Contents (in ppm)
	Anomaly A	Cu ≥ 128.4
M+36		
	Anomaly B	128.4 > Cu ≥ 89.8
M+26		
	High background	89.8 > Cu ≥ 62.8
M+16		

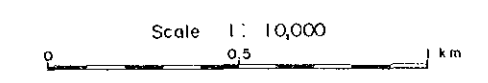


1:10,000



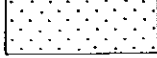


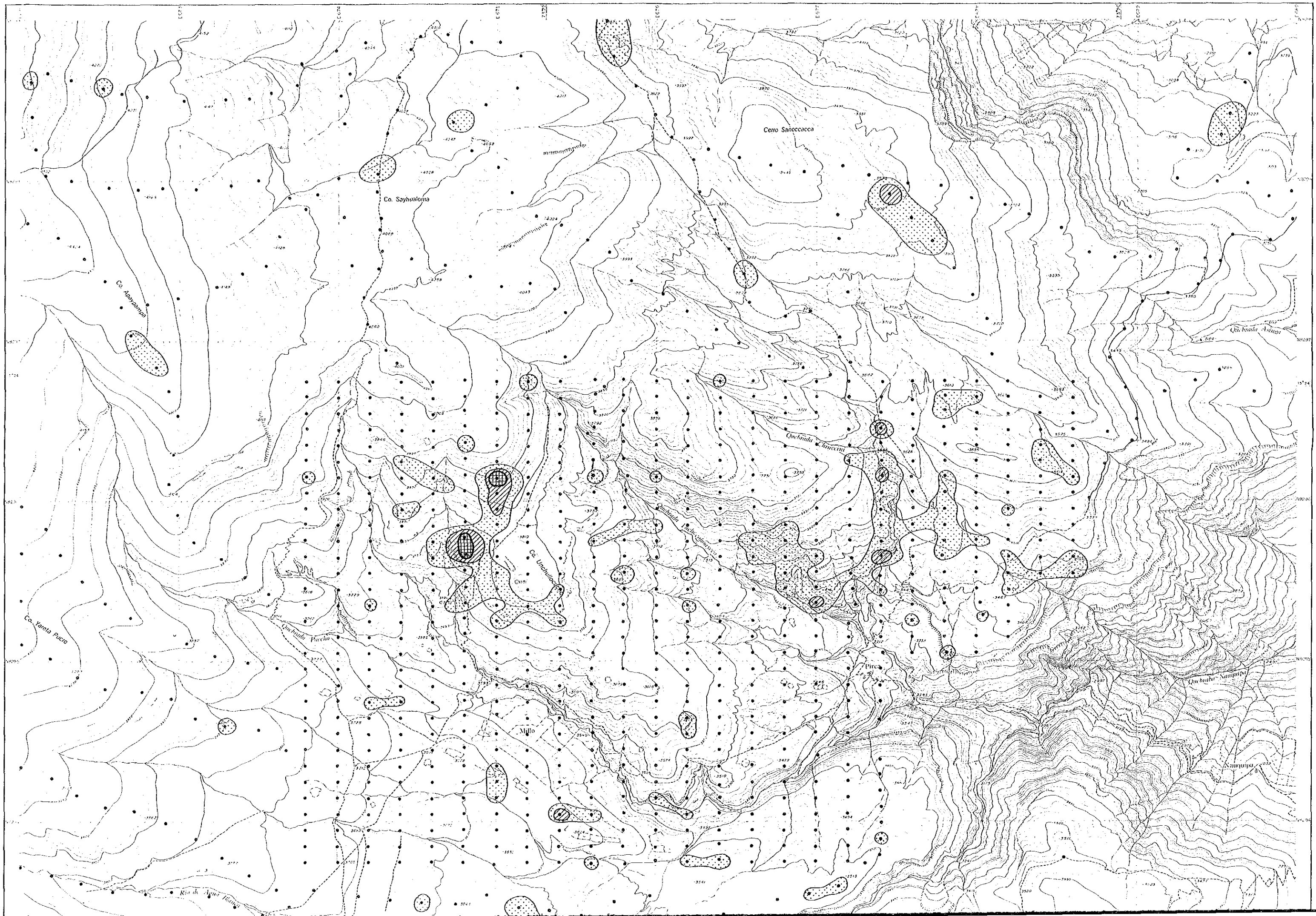


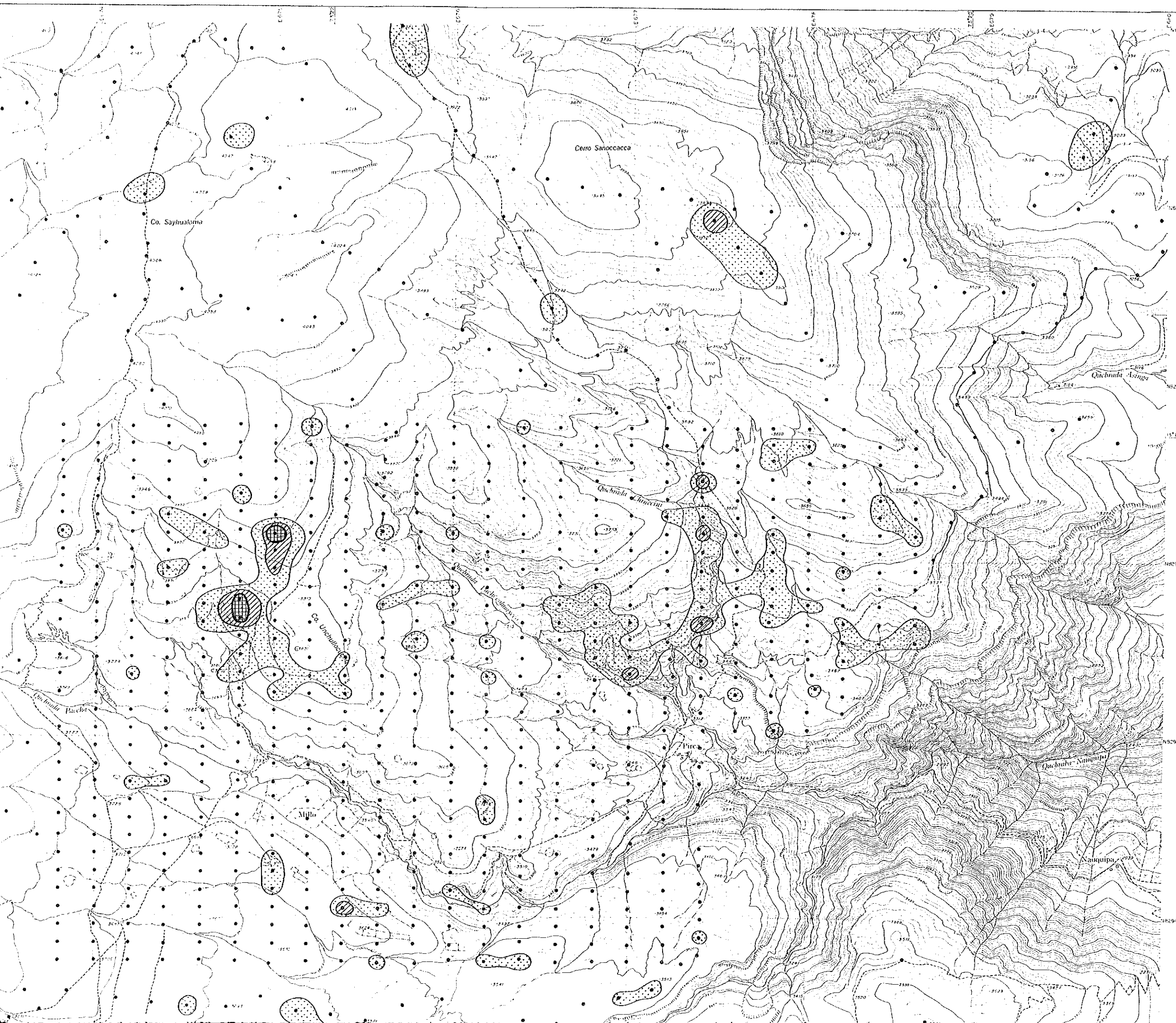
JAPAN INTERNATIONAL COOPERATION AGENCY
 METAL MINING AGENCY OF JAPAN
 INSTITUTO GEOLOGICO MINERO Y METALURGICO
 February 1987



LEGEND

Symbol	Classification	Contents (in ppm)
	Anomaly A M+36	$Cu \geq 128.4$
	Anomaly B M+26	$128.4 > Cu \geq 89.8$
	High background M+16	$89.8 > Cu \geq 62.8$



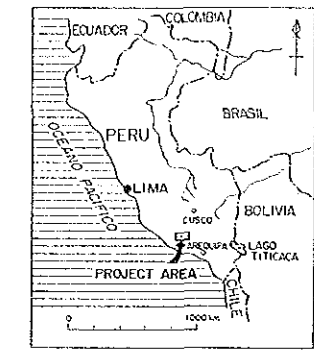


MINERAL EXPLORATION
IN
COTAHUASI AREA
(PHASE I)

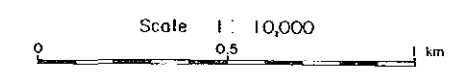
16200
1987.02.25

GEOCHEMICAL ANOMALY MAP OF
THE PIRCA EASTERN AREA
(Pb)

LOCATION INDEX

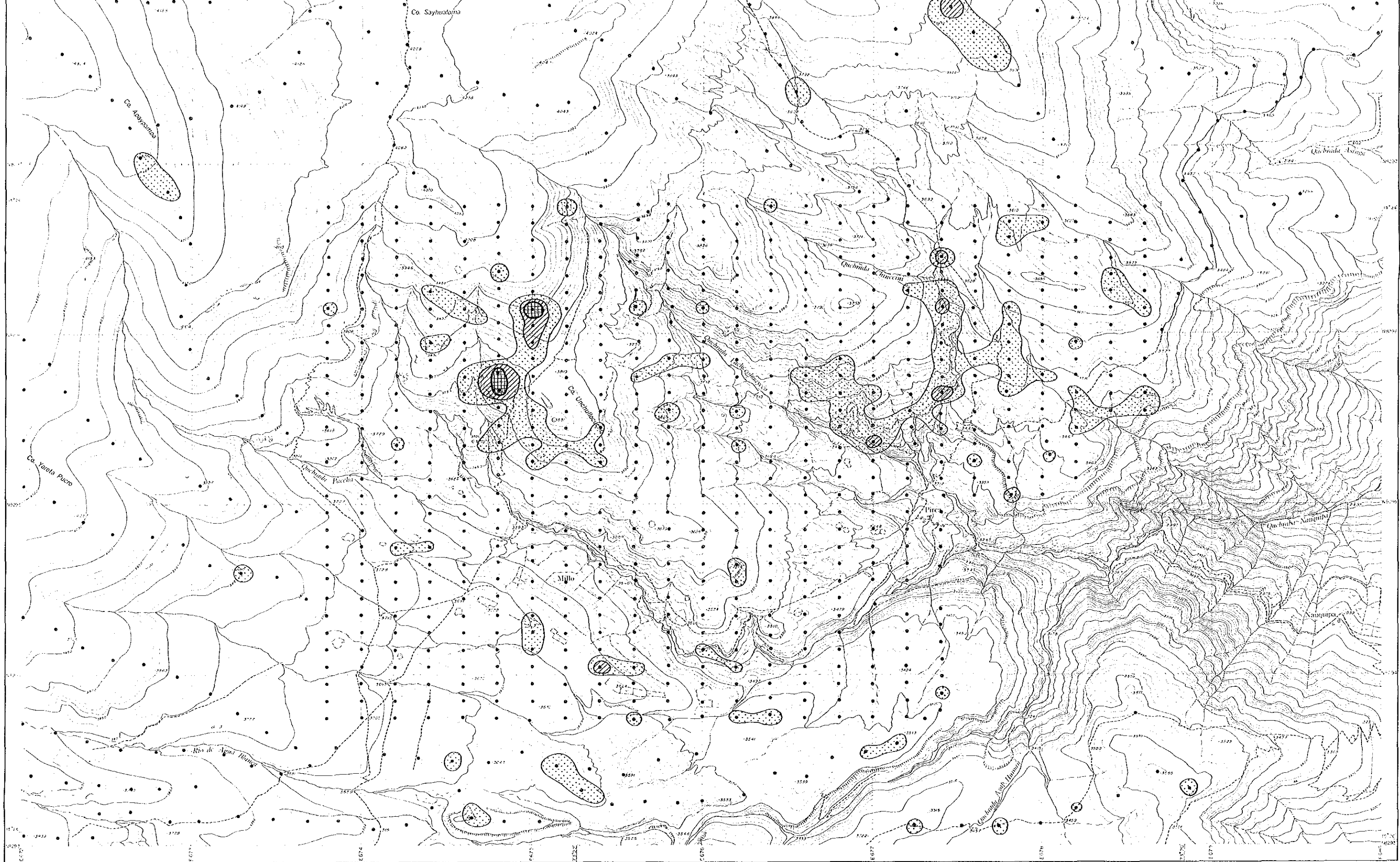


JAPAN INTERNATIONAL COOPERATION AGENCY
METAL MINING AGENCY OF JAPAN
INSTITUTO GEOLOGICO MINERO Y METALURGICO
February 1987

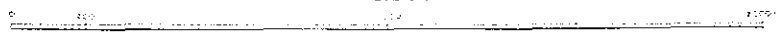


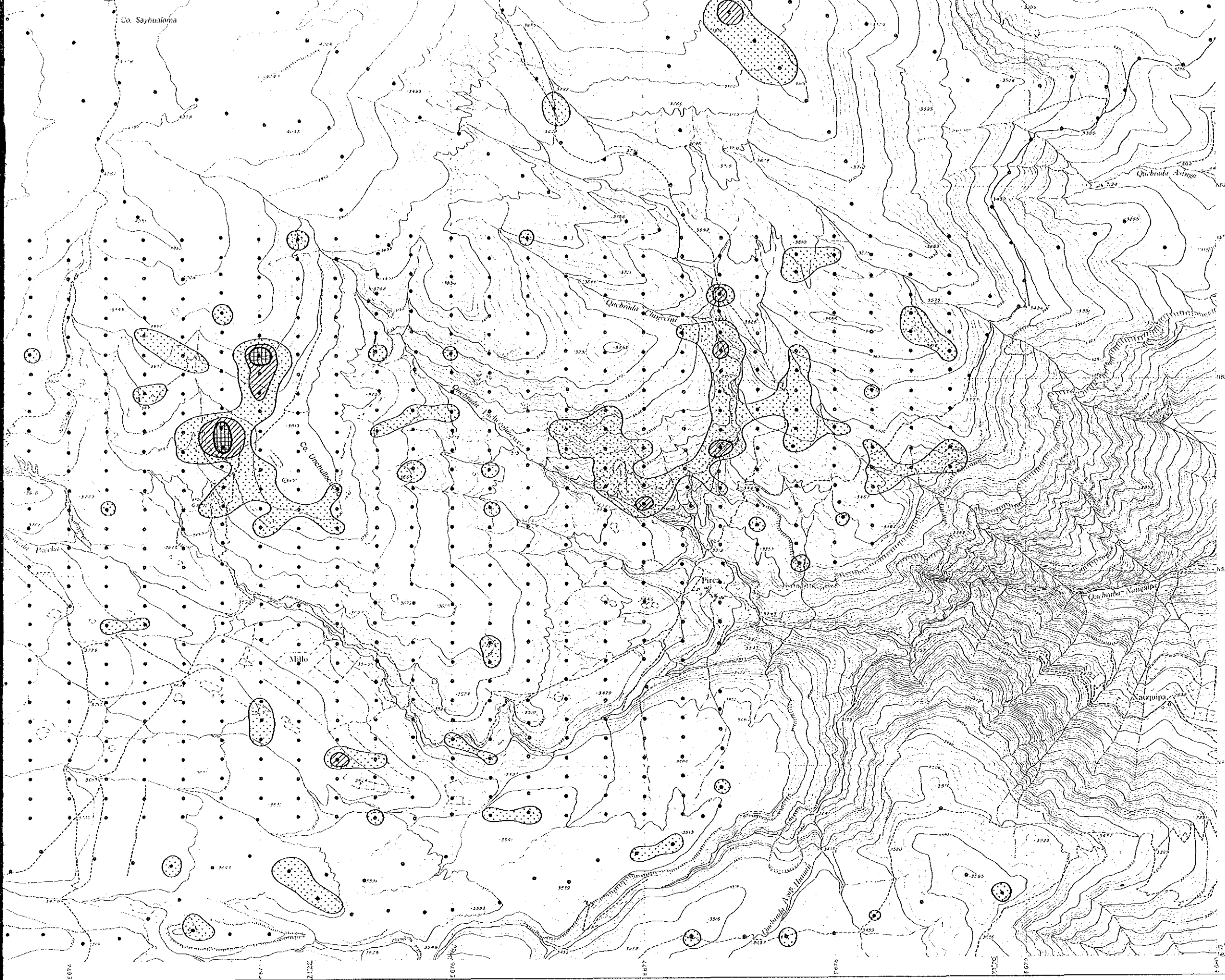
LEGEND

Symbol	Classification	Contents (in ppm)
	Anomaly A	Pb ≥ 42.1
	Anomaly B	42.1 > Pb ≥ 21.1
	High background	21.1 > Pb ≥ 10.6
	M+36	
	M+26	
	M+16	



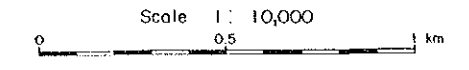
1:10,000





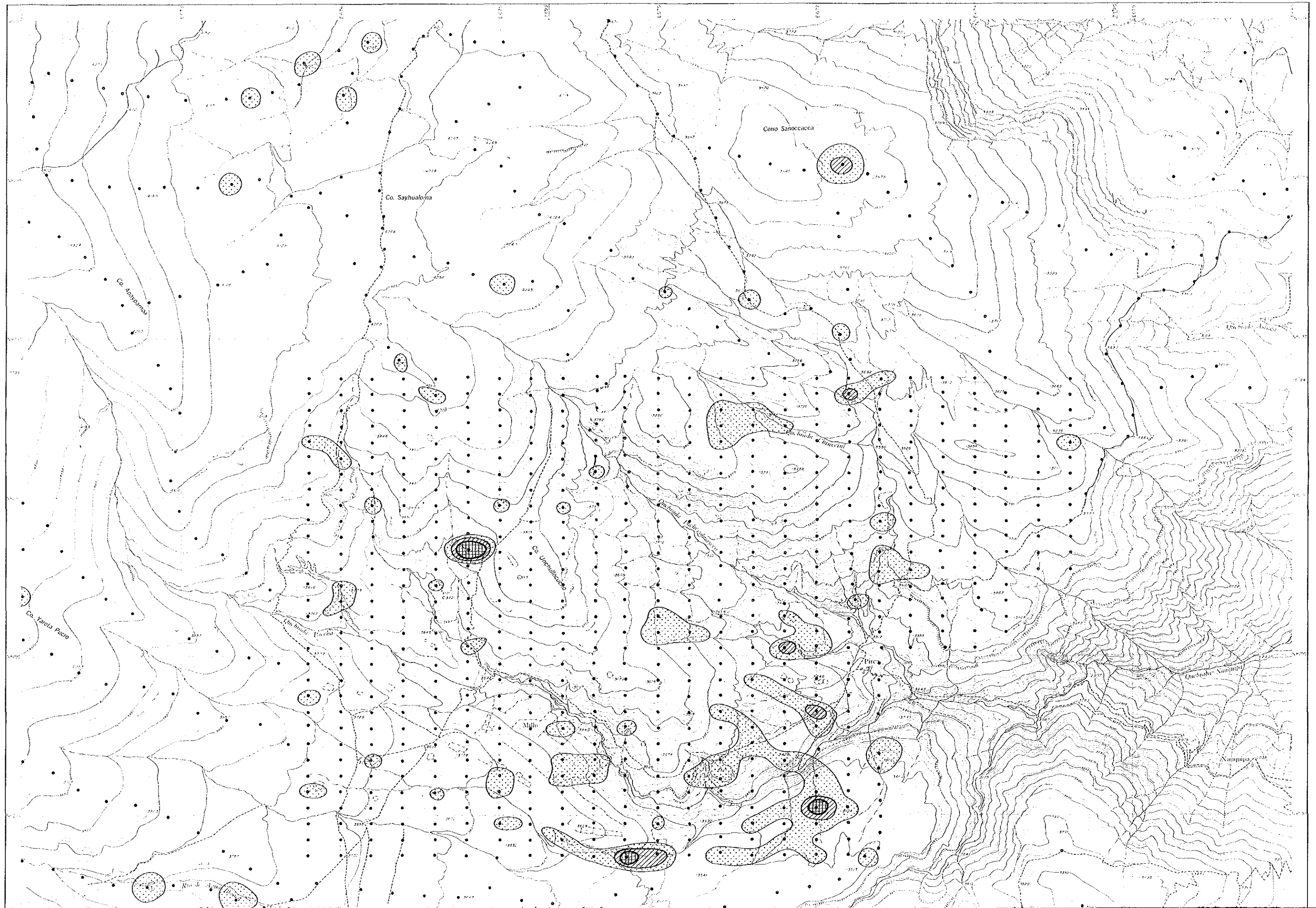
1:10,000

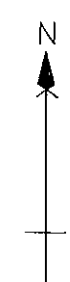
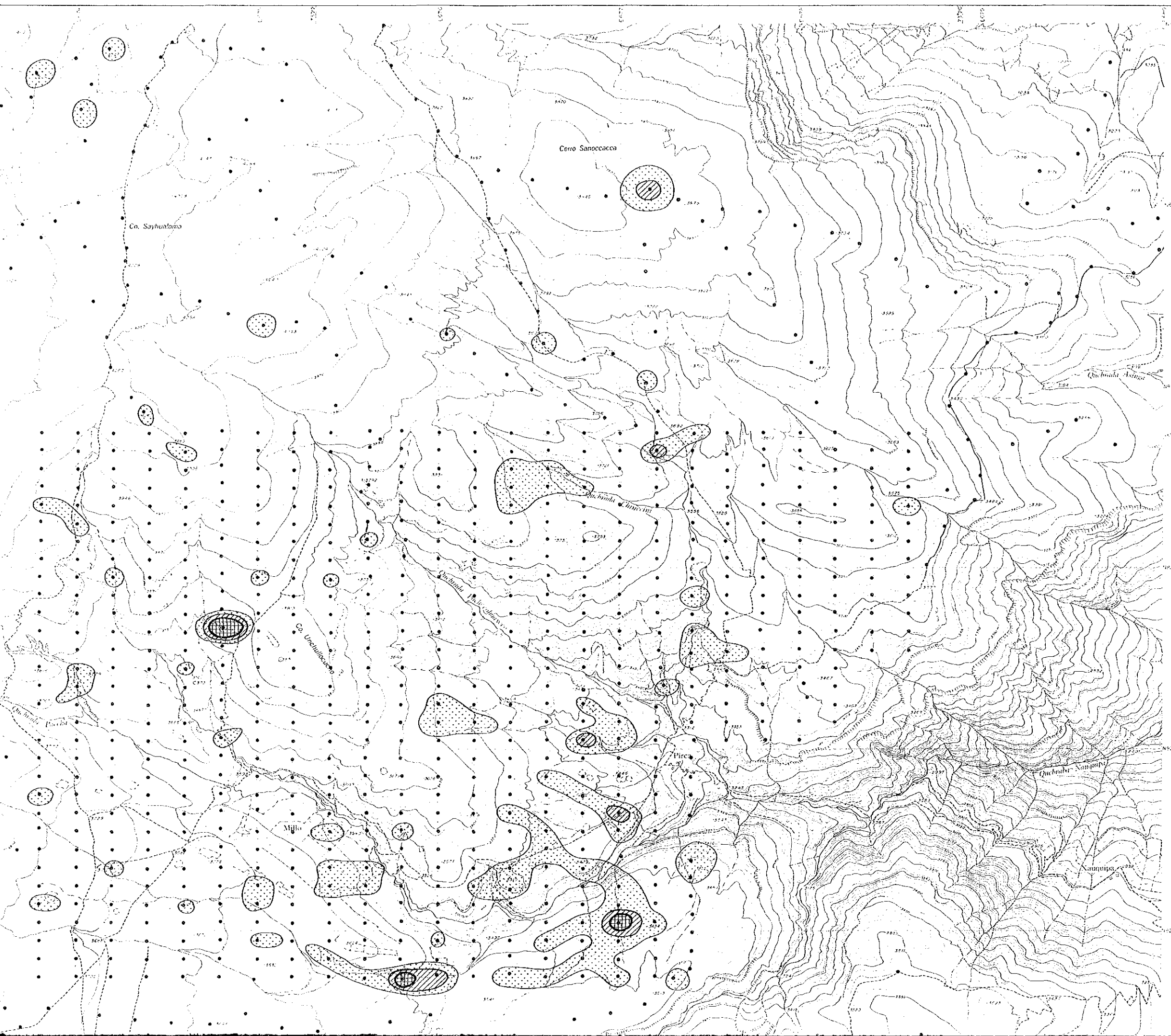
JAPAN INTERNATIONAL COOPERATION AGENCY
 METAL MINING AGENCY OF JAPAN
 INSTITUTO GEOLOGICO MINERO Y METALURGICO
 February 1987



LEGEND

Symbol	Classification	Contents (in ppm)
	Anomaly A M+3σ	Pb ≥ 42.1
	Anomaly B M+2σ	42.1 > Pb ≥ 21.1
	High background M+1σ	21.1 > Pb ≥ 10.6



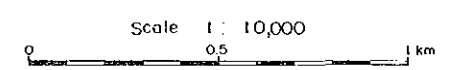


国務院地質研究所 (18-16)
 16200
 圖書分類

MINERAL EXPLORATION
 IN
 COTAHUASI AREA
 (PHASE I)

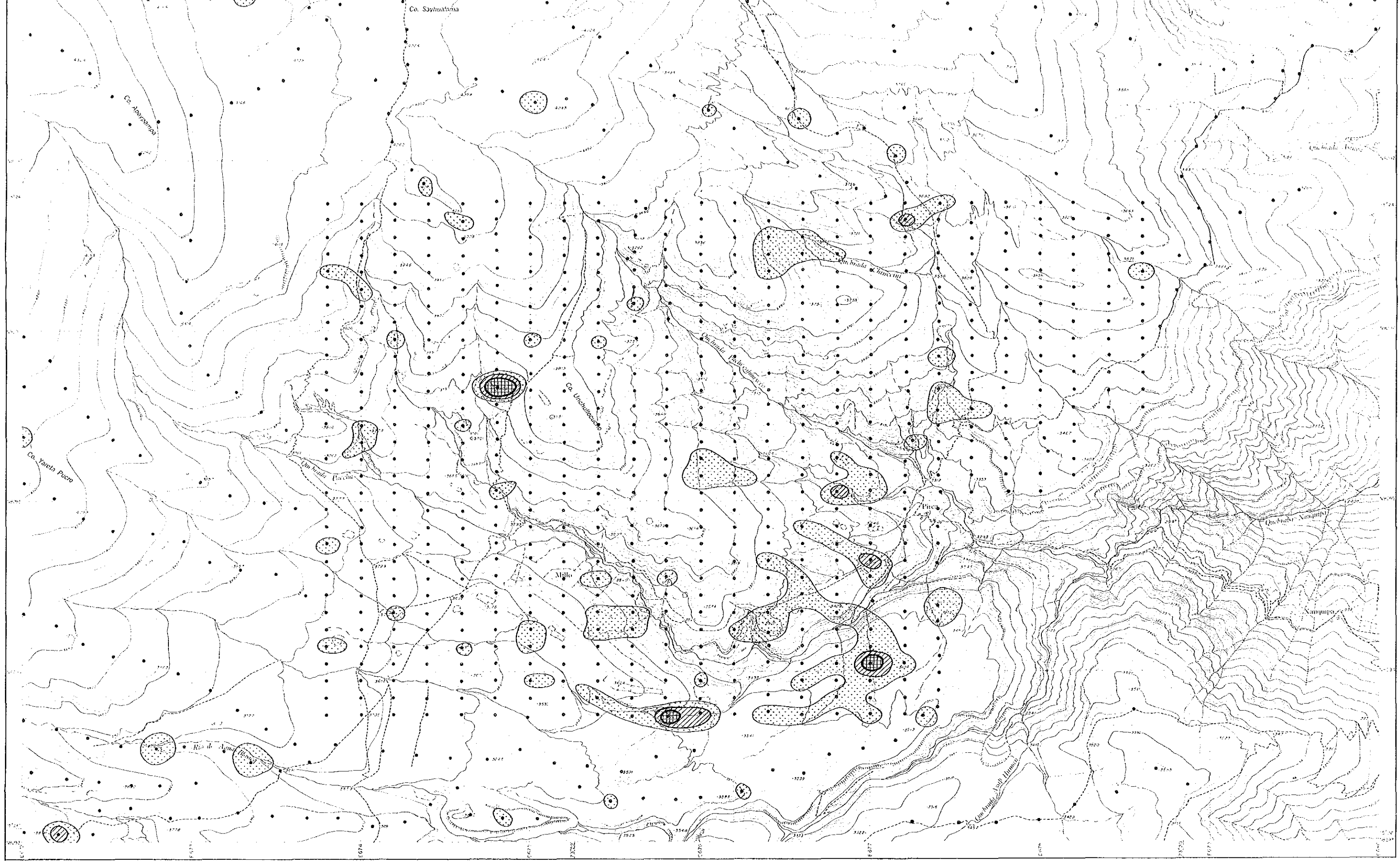
**GEOCHEMICAL ANOMALY MAP OF
 THE PIRCA EASTERN AREA**
 (Zn)
 LOCATION INDEX

JAPAN INTERNATIONAL COOPERATION AGENCY
 METAL MINING AGENCY OF JAPAN
 INSTITUTO GEOLOGICO MINERO Y METALURGICO
 February 1987

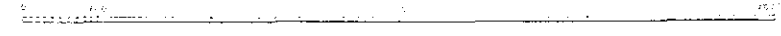


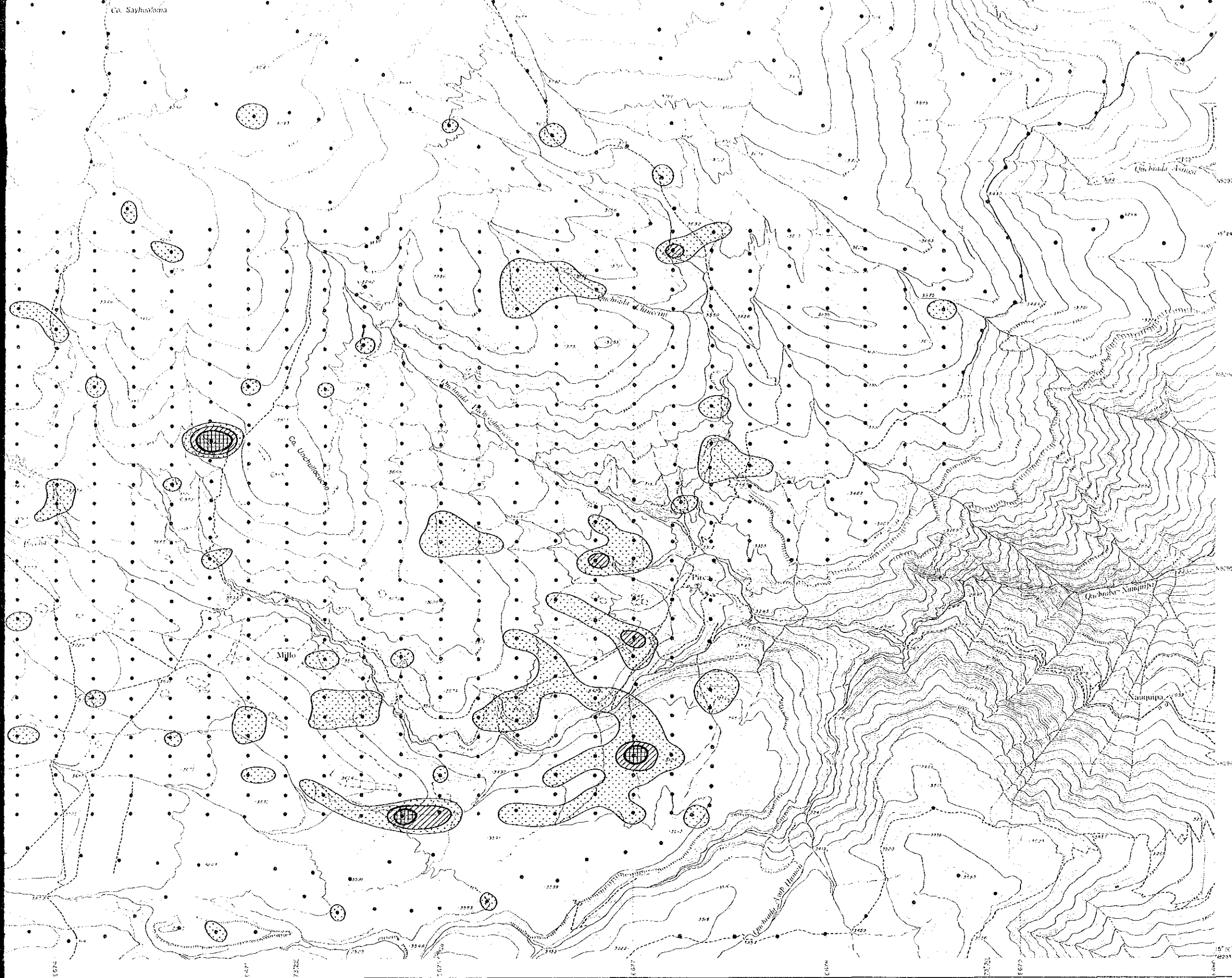
LEGEND

Symbol	Classification	Contents (in ppm)
	Anomaly A M+3σ	Zn ≥ 228.4
	Anomaly B M+2σ	228.4 > Zn ≥ 146.1
	High background M+1σ	146.1 > Zn ≥ 93.5

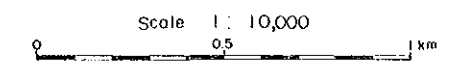


1:10,000





JAPAN INTERNATIONAL COOPERATION AGENCY
METAL MINING AGENCY OF JAPAN
INSTITUTO GEOLOGICO MINERO Y METALURGICO
February 1987



LEGEND

Symbol	Classification	Contents (in ppm)
	Anomaly A M+3σ	Zn ≥ 228.4
	Anomaly B M+2σ	228.4 > Zn ≥ 146.1
	High background M+1σ	146.1 > Zn ≥ 93.5

1 : 10,000