

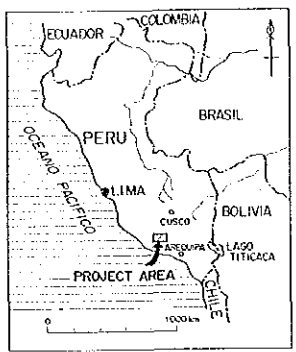

PL. 16

MINERAL EXPLORATION
IN
COTAHUASI AREA
(PHASE I)

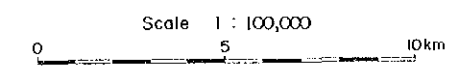
1:5151
 1:5151

GEOCHEMICAL INTERPRETATION MAP (COMPOSITE DATA)

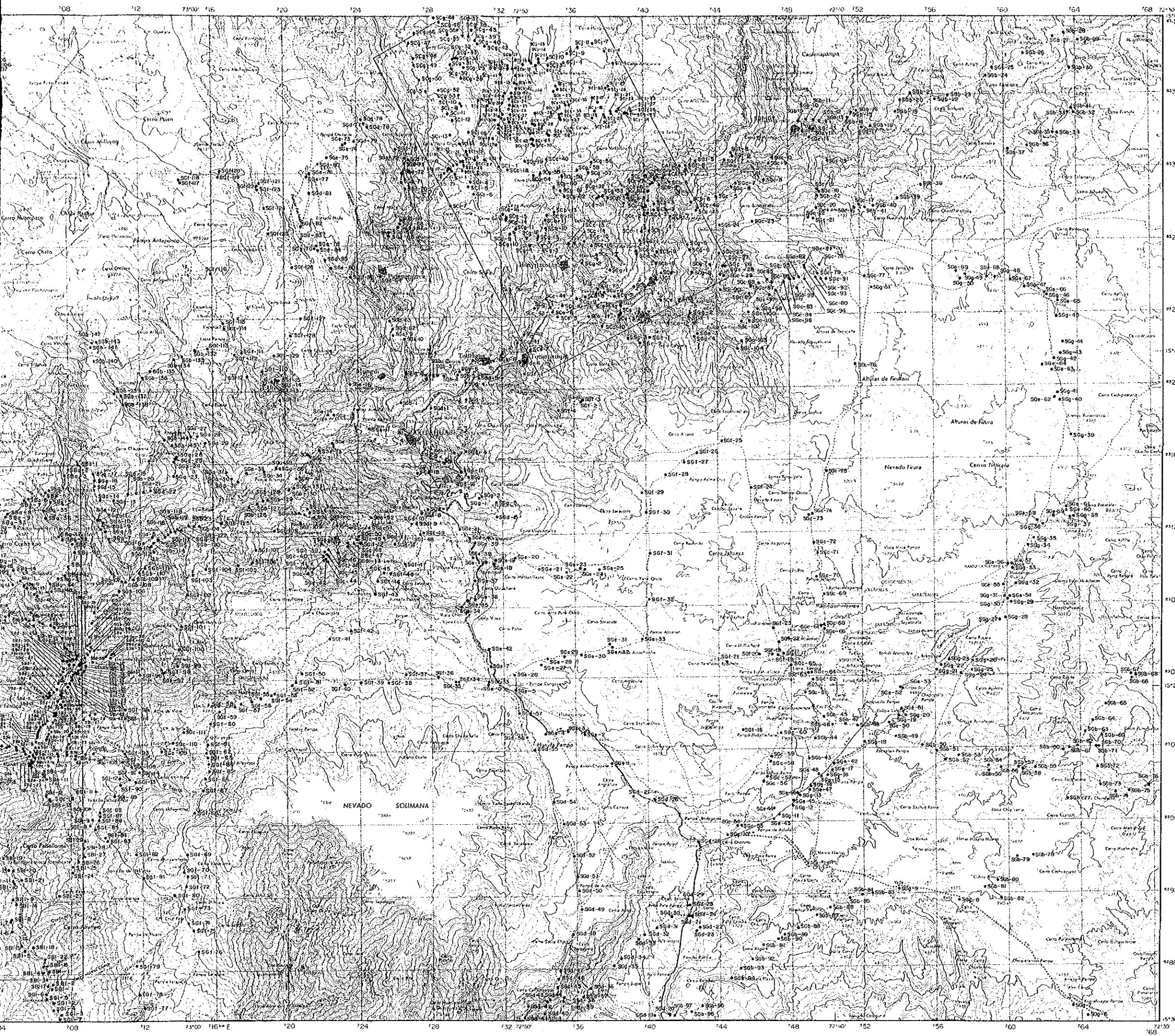
LOCATION INDEX

JAPAN INTERNATIONAL COOPERATION AGENCY
METAL MINING AGENCY OF JAPAN
INSTITUTO GEOLOGICO MINERO Y METALURGICO
February 1986



- ### LEGEND
- Au Ag
 Anomaly Zone of Elements and Anomalous Elements
 - Z1, Z2
 Anomaly Zone of Principal Components and Anomalous Components
 - Maran : Name of Anomaly Zone


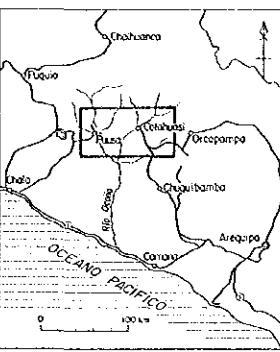


PI 17
 15151
 15151

MINERAL EXPLORATION
 IN
 COTAHUASI AREA
 (PHASE I)

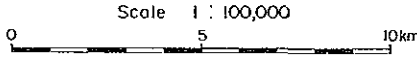
SAMPLE LOCATION MAP OF GEOCHEMICAL STREAM SEDIMENT

LOCATION INDEX

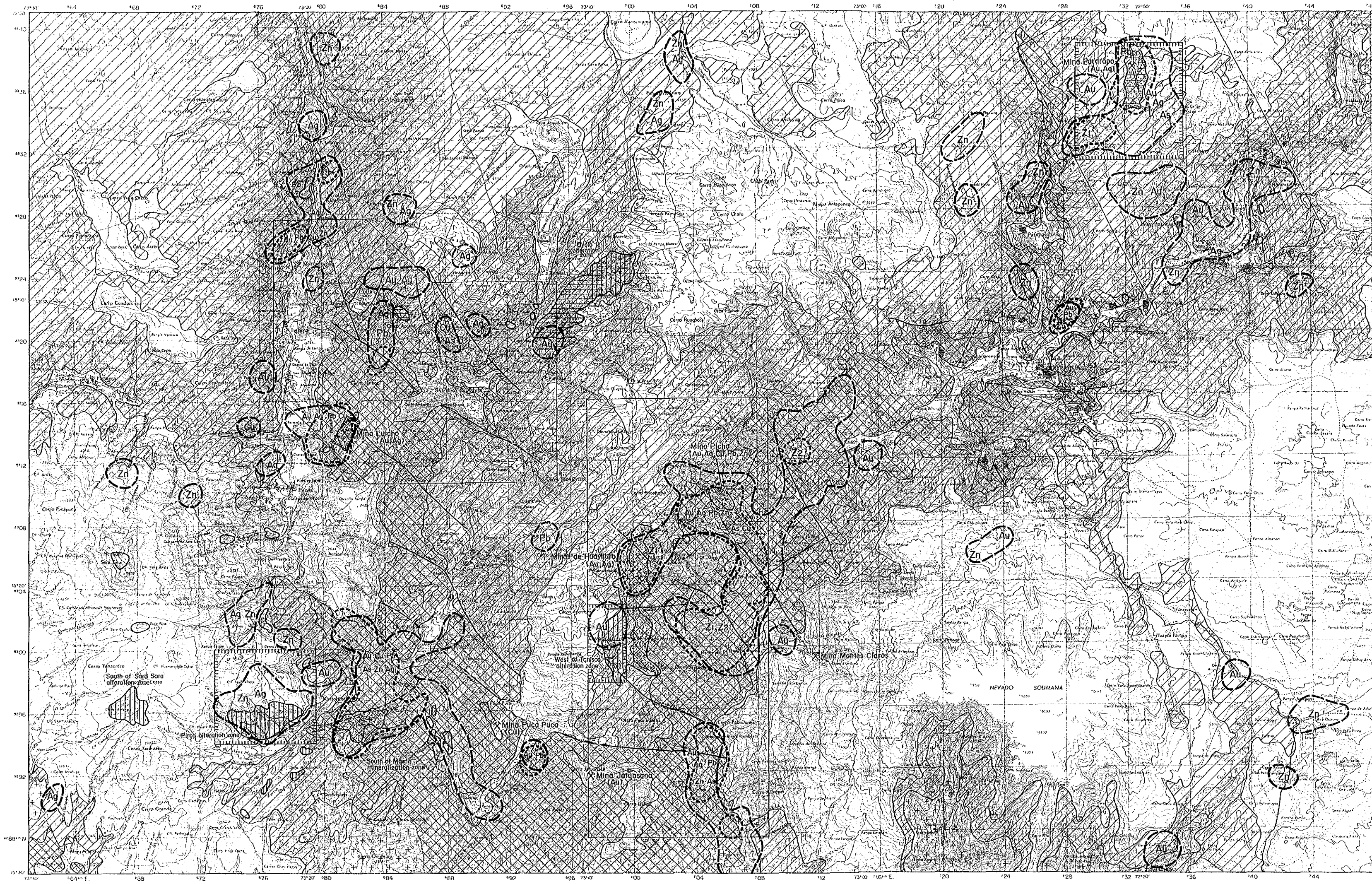



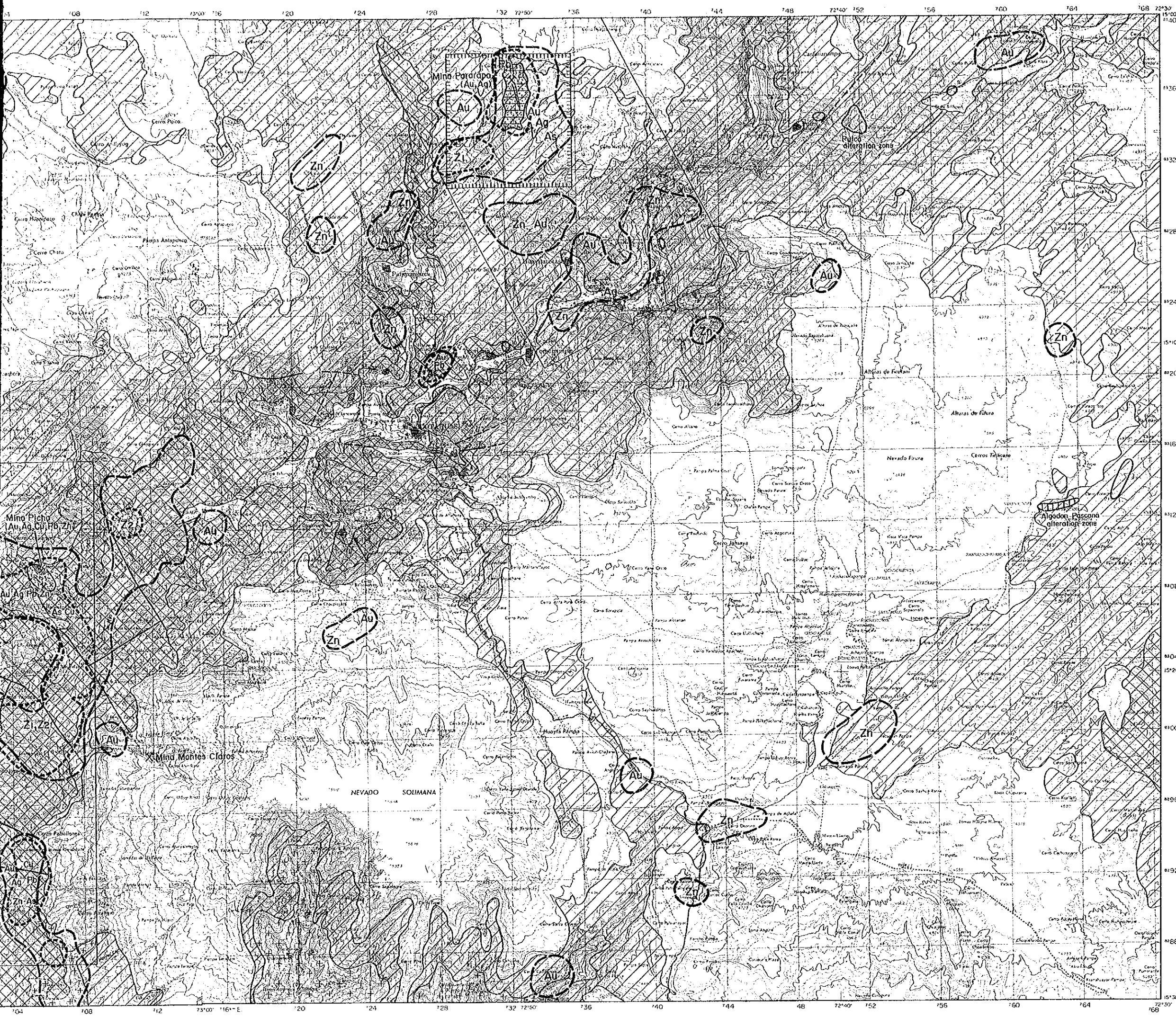
JAPAN INTERNATIONAL COOPERATION AGENCY
 METAL MINING AGENCY OF JAPAN
 INSTITUTO GEOLOGICO MINERO Y METALURGICO
 February 1986

Scale 1 : 100,000



708 712 716 720 724 728 732 736 740 744 748 752 756 760 764 768 772





PL 18

MINERAL EXPLORATION
IN
COTAHUASI AREA
(PHASE I)

15151

INTERPRETATION MAP OF THE COTAHUASI AREA

LOCATION INDEX

JAPAN INTERNATIONAL COOPERATION AGENCY
METAL MINING AGENCY OF JAPAN
INSTITUTO GEOLOGICO MINERO Y METALURGICO
February 1986

Scale 1 : 100,000
0 5 10km

- ### LEGEND
- Geochemical Anomaly**
- Anomaly Zone and anomalous elements
 - Principal Components anomaly
- Alteration zone**
- Mainly silicification
 - Silicification + argillization
 - Others (iron oxides stained zone)
 - Skarn
 - Mineralization zone
 - Mine
- Geological System**
- Quaternary System
 - Tertiary System
 - Pre-Tertiary System
- Intrusive Rocks**
- Stock and Dyke (Andesite)
 - Stock (Dioritic Rocks)
 - Batholith (Granitic Rocks)
 - Recommended Area

