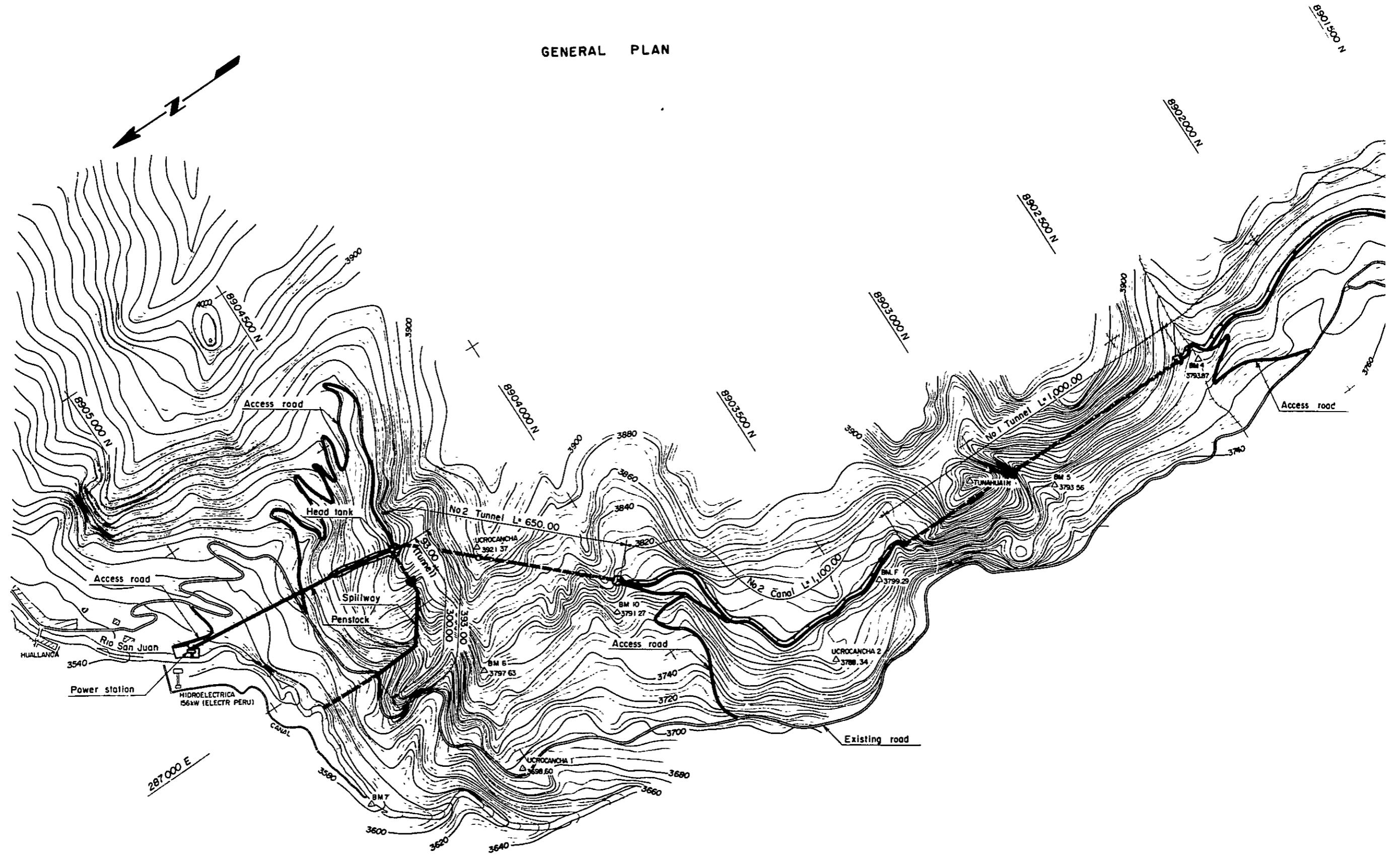


9.7 Evaluation

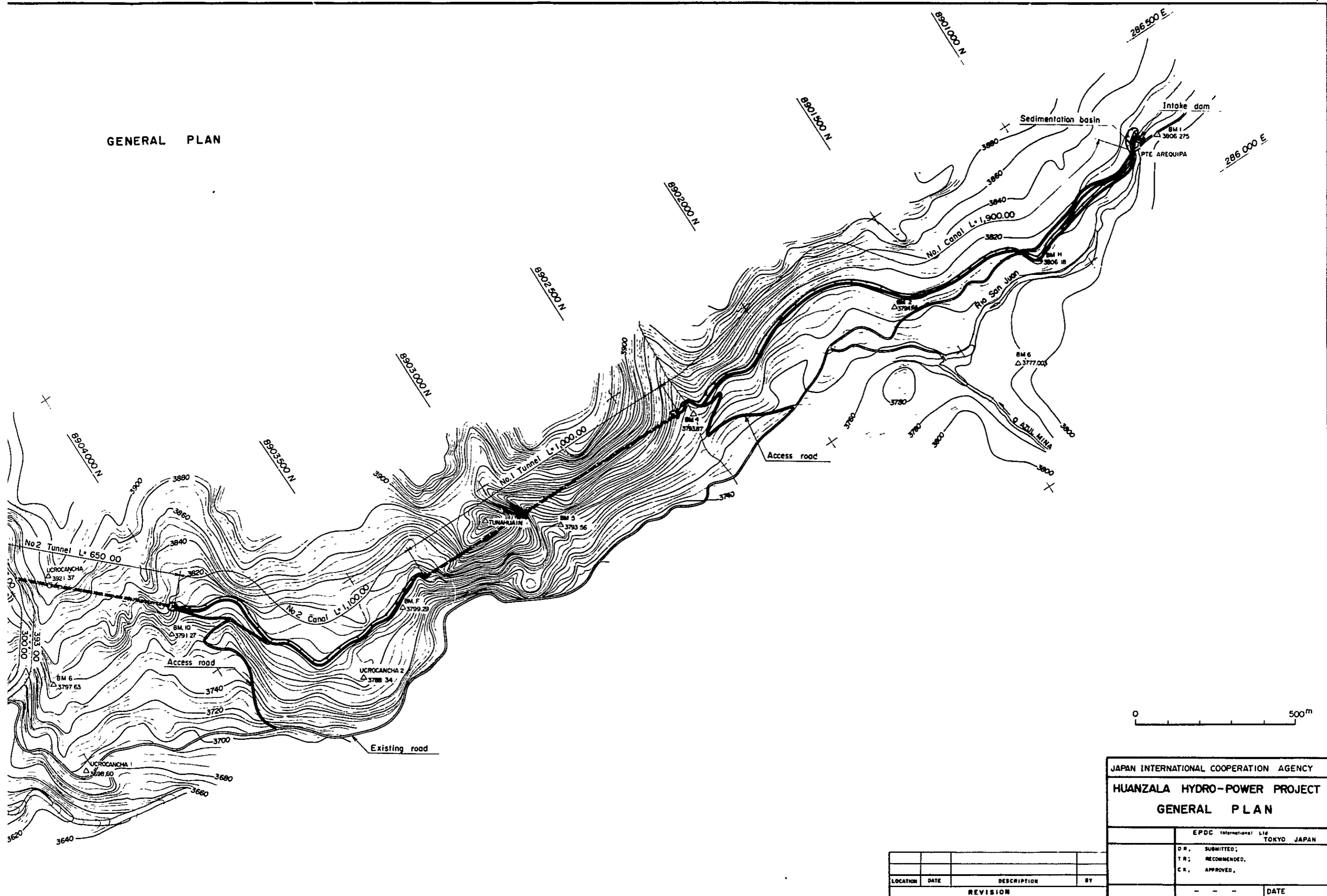
The economic efficiency of the Huanzala Hydro-electric Project, measured by EIRR, indicates a rate of 11.93% for the basic case. In the event the construction cost should rise by 10%, the EIRR will decline to 10.34%, whereas if the fuel cost should rise by 10% the EIRR will improve to 13.38.

Since the criterion of the World Bank for a project is 12%, this Project cannot necessarily be said to have good profitability so far as seen from the figures. However, when the fact that indirect benefits have been omitted and the trend of fuel oil to rise in price are taken into account, there is a possibility that the true EIRR will be higher than 11.93%. Since the criterion of the World Bank is satisfied with the said EIRR-value, it is said that this Project is economically feasible from the standpoint of the national economy.

GENERAL PLAN



GENERAL PLAN

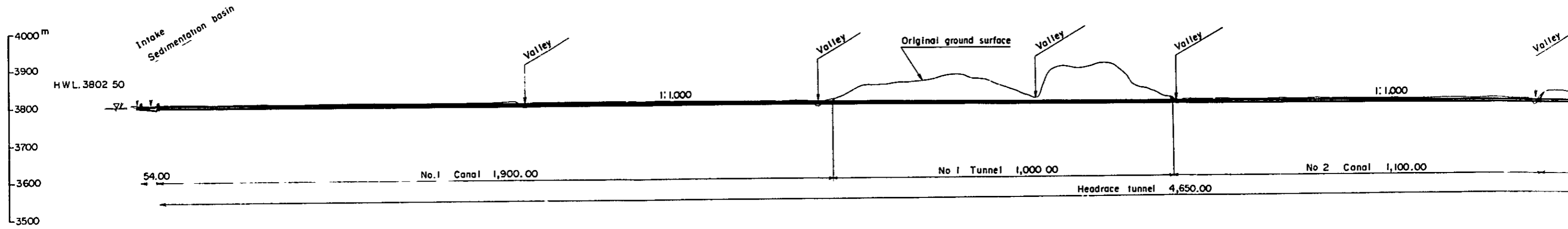


JAPAN INTERNATIONAL COOPERATION AGENCY
 HUANZALA HYDRO-POWER PROJECT
 GENERAL PLAN

EPOC International Ltd		TOKYO JAPAN	
D.R.	SUBMITTED;		
T.R.	RECOMMENDED;		
C.K.	APPROVED;		
			DATE

LOCATION	DATE	DESCRIPTION	BY
REVISION			

PROFILE

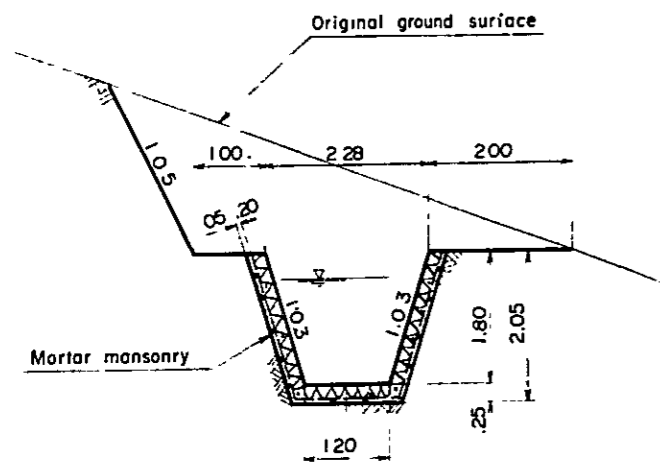


TYPICAL SECTIONS

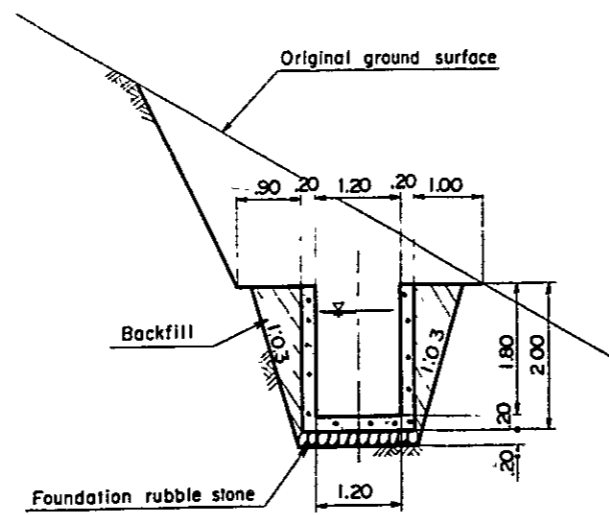
SECTION OF CANALS

SECTION OF

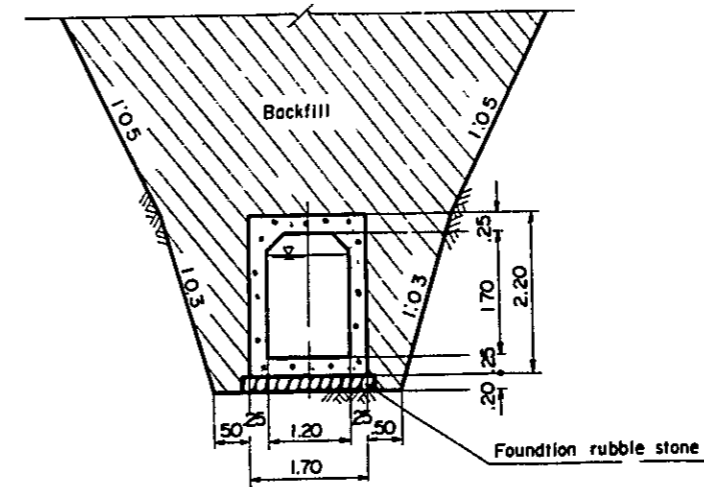
TYPE - I



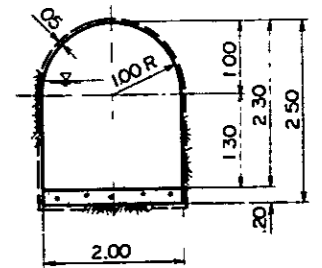
TYPE - II



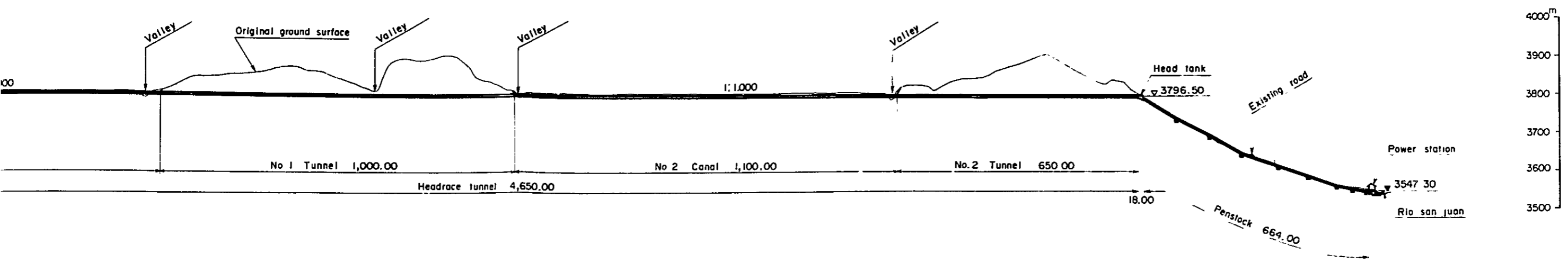
TYPE - III



TYPE - I



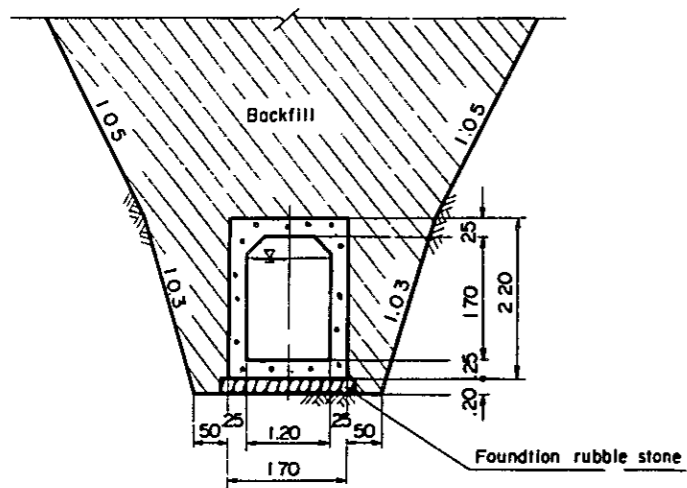
PROFILE



TYPICAL SECTIONS

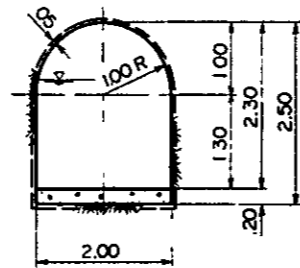
CANALS

TYPE - III

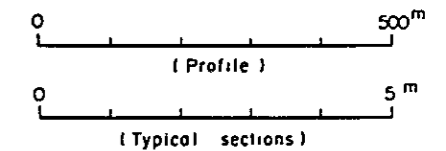
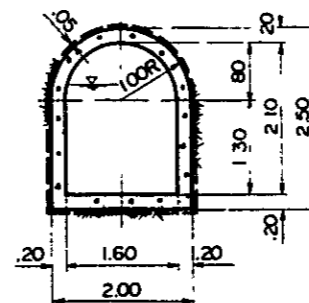


SECTION OF TUNNEL

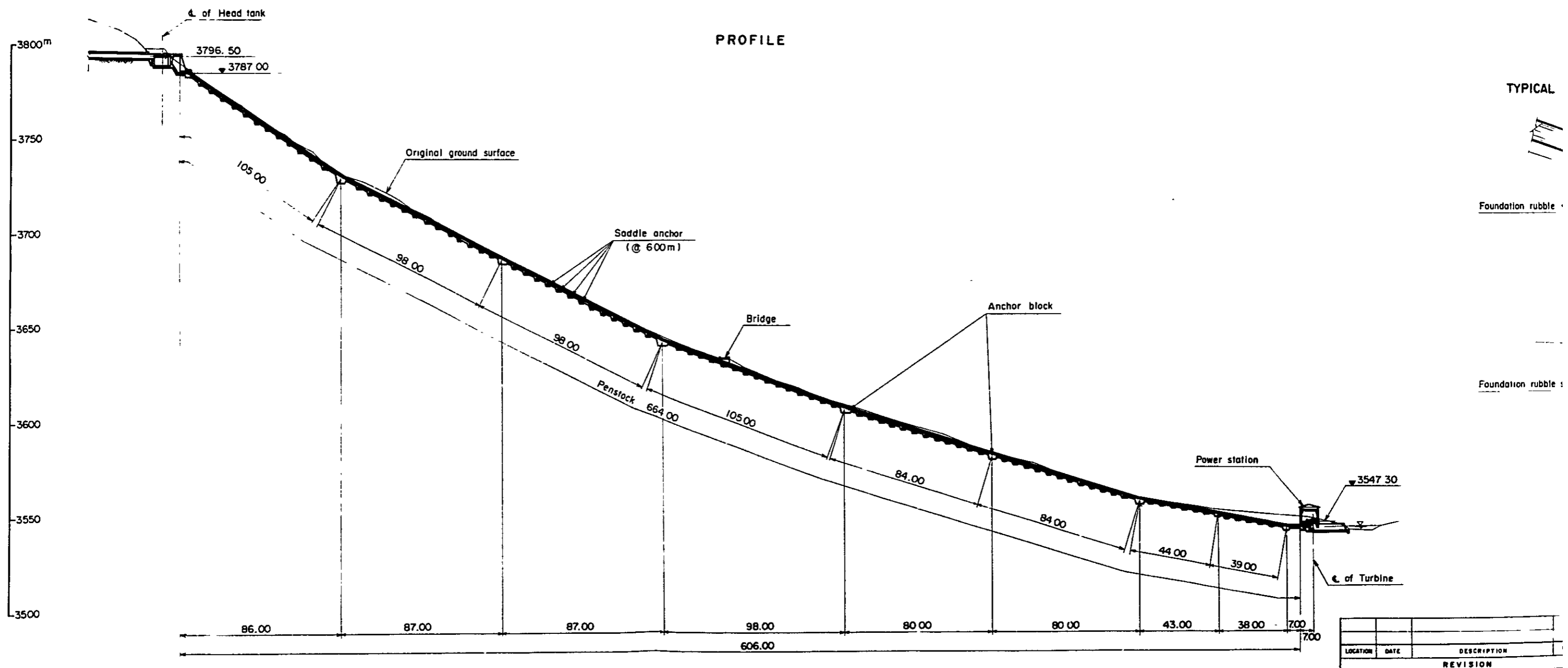
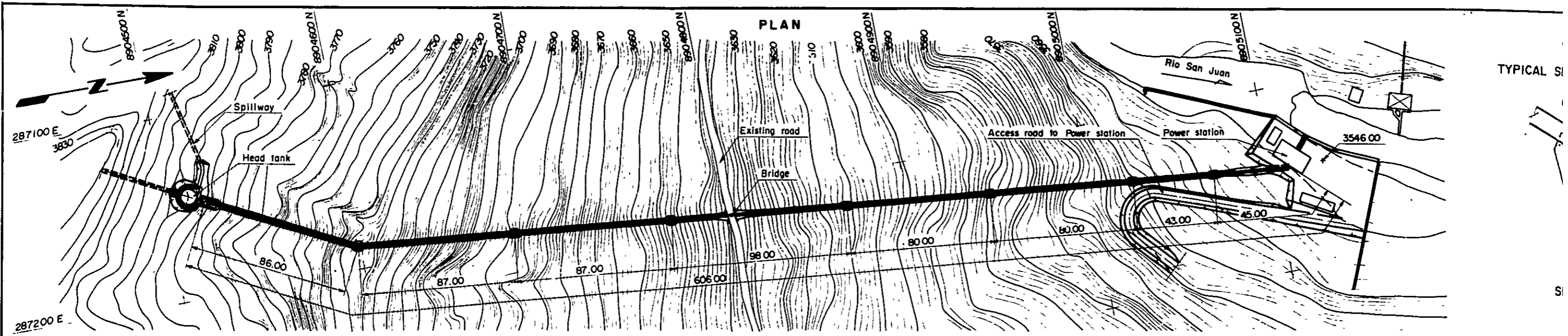
TYPE - I



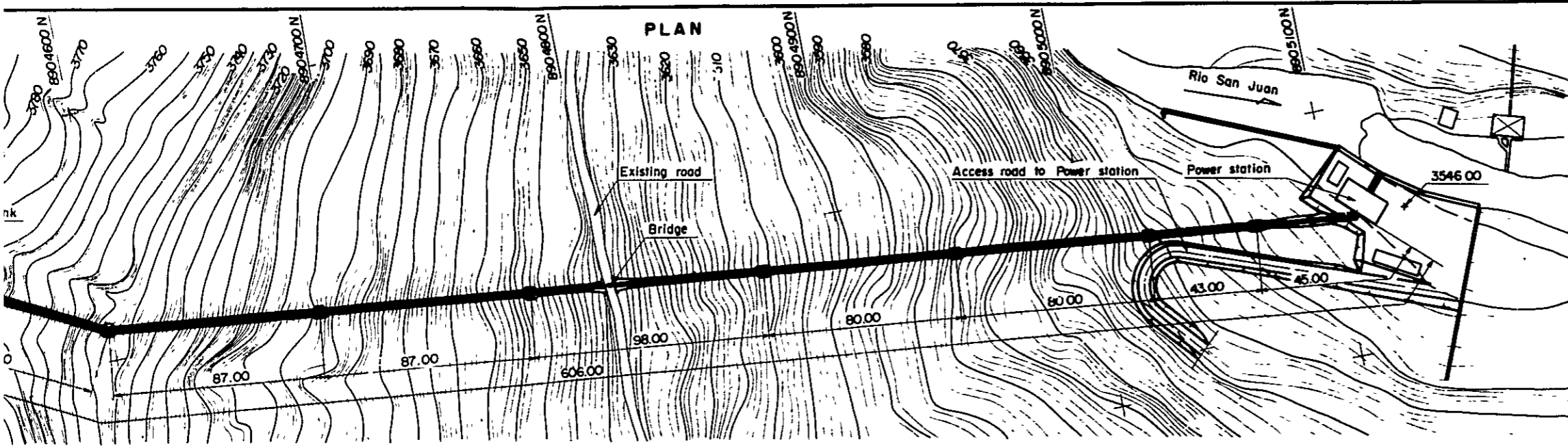
TYPE - II



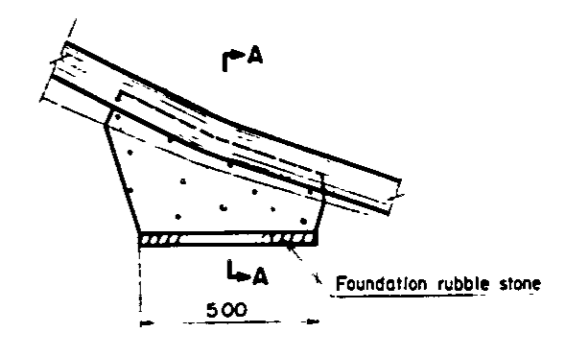
JAPAN INTERNATIONAL COOPERATION AGENCY	
HUANZALA HYDRO-POWER PROJECT	
WATERWAY	
PROFILE, TYPICAL SECTIONS	
EPDC (Aytrahani) Ltd TOKYO JAPAN	
D.R.	SUBMITTED,
T.R.	RECOMMENDED,
C.K.	APPROVED,
LOCATION	DATE
DESCRIPTION	BY
REVISION	DATE



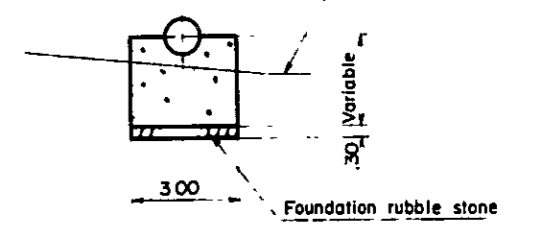
LOCATION	DATE	DESCRIPTION	REVISION



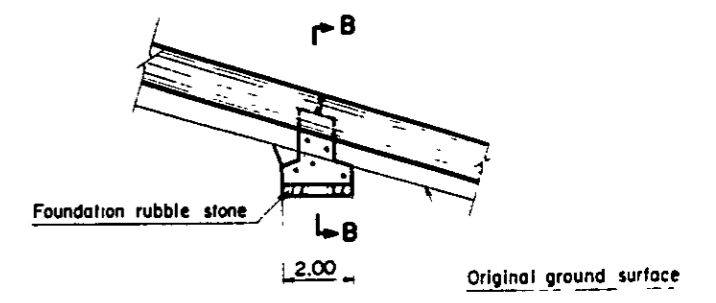
TYPICAL SECTION OF ANCHOR BLOCK



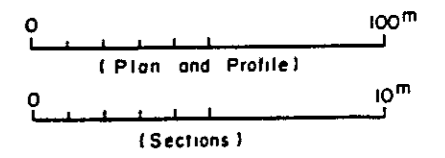
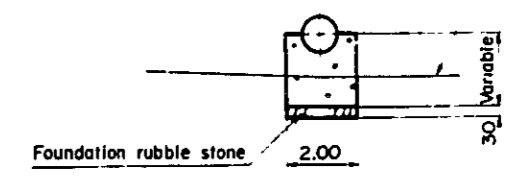
SECTION A-A Original ground surface



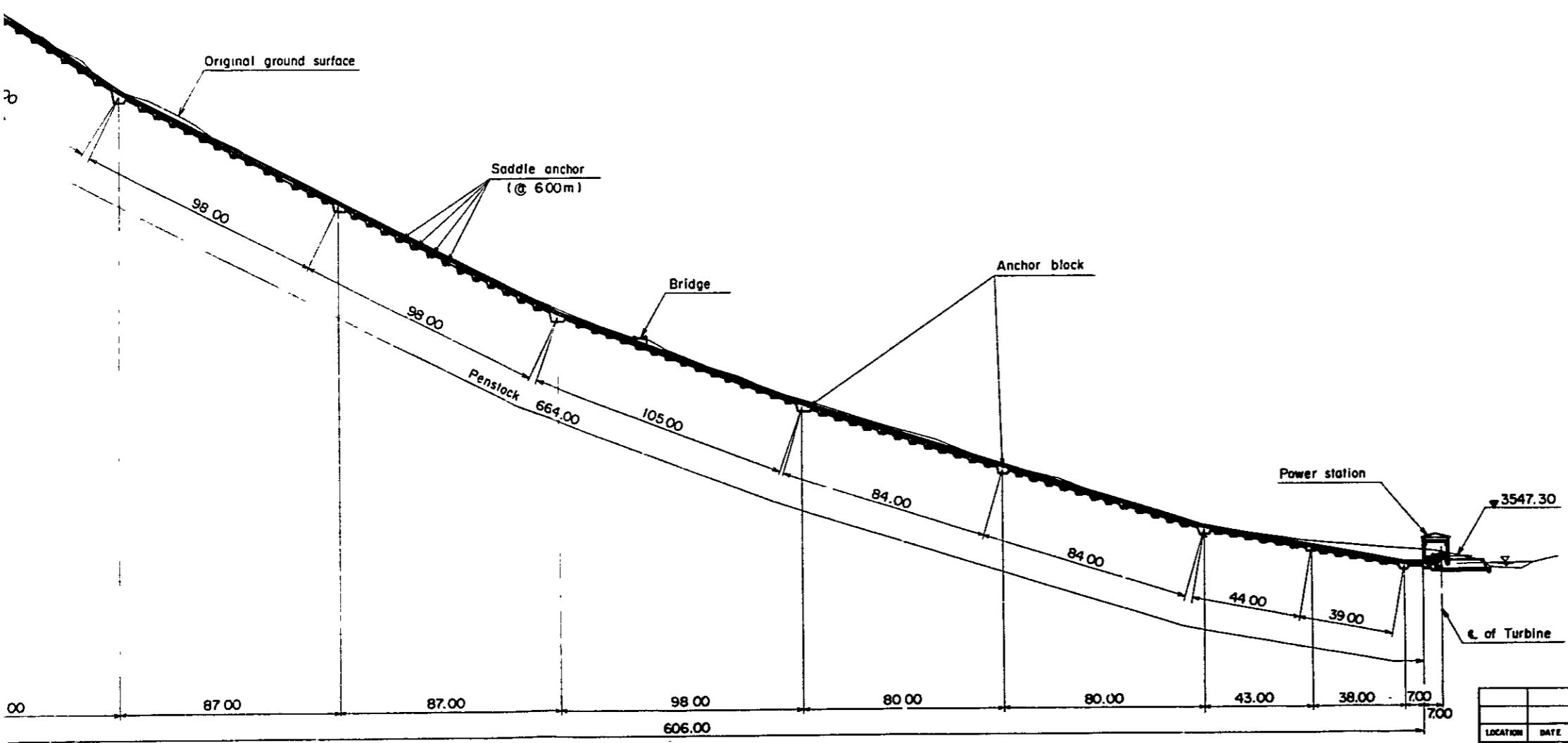
TYPICAL SECTION OF SADDLE ANCHOR



SECTION B-B Original ground surface



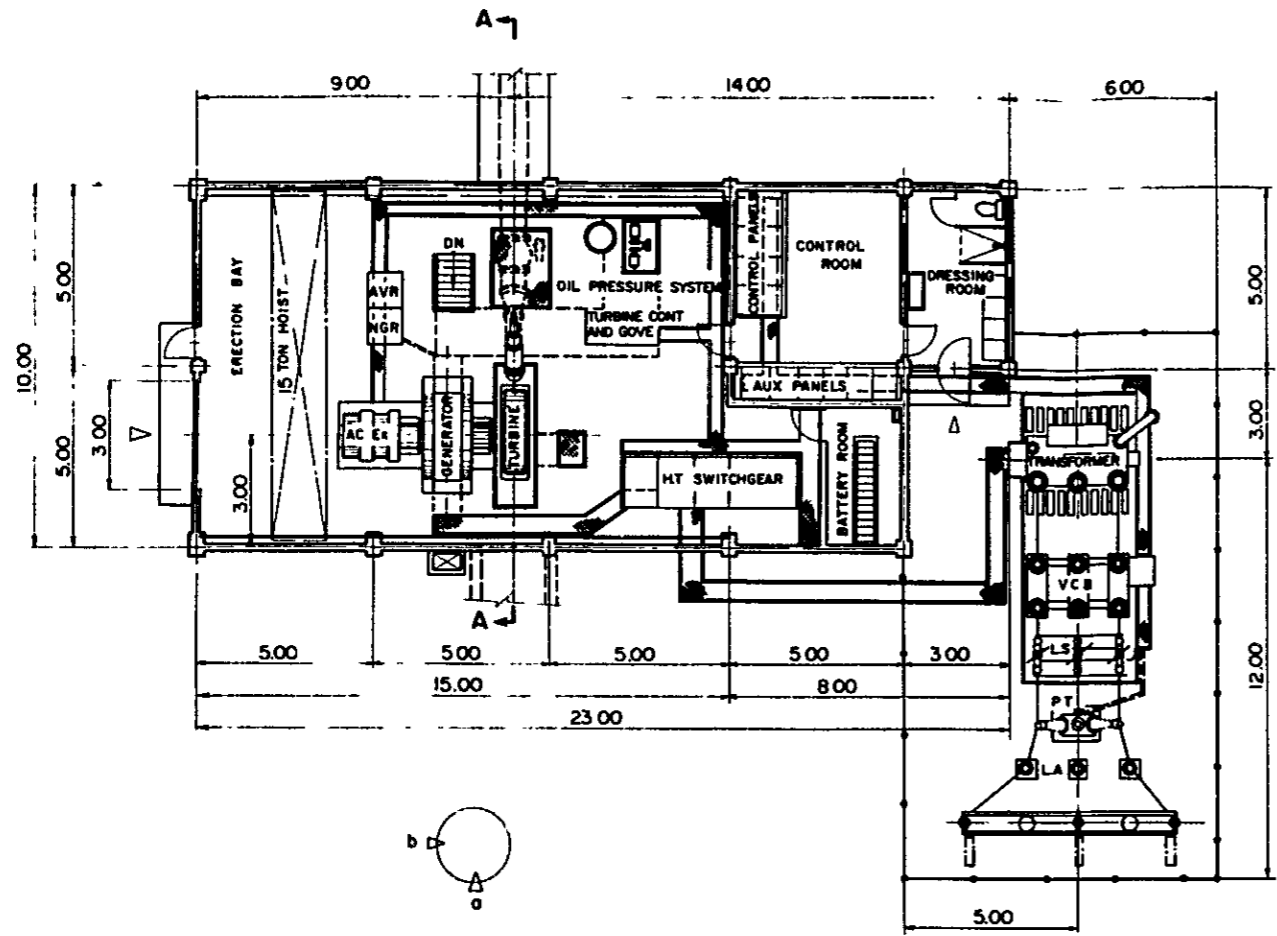
PROFILE



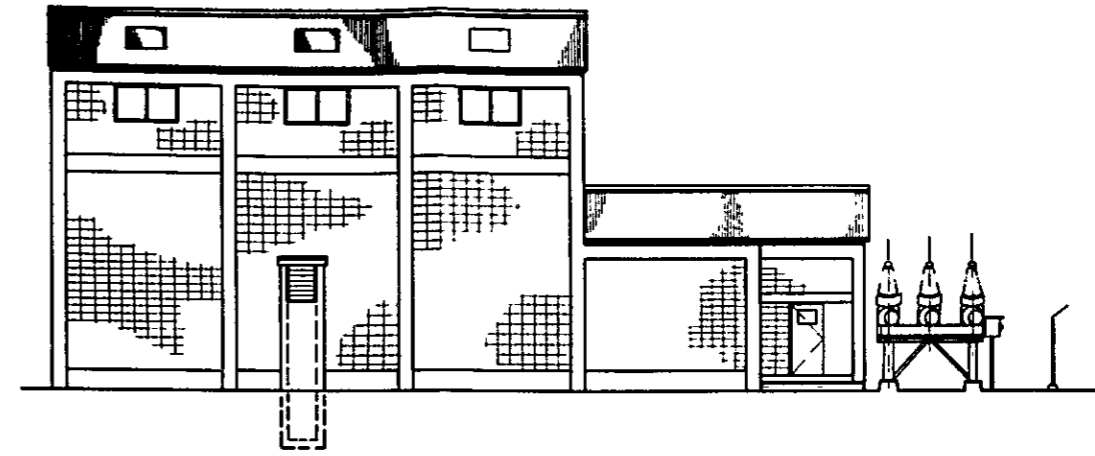
LOCATION	DATE	DESCRIPTION	BY
		REVISION	

JAPAN INTERNATIONAL COOPERATION AGENCY	
HUANZALA HYDRO-POWER PROJECT	
PENSTOCK	
PLAN AND PROFILE	
E.P.O.C. International, Ltd TOKYO, JAPAN	
D.R.	SUBMITTED,
T.R.	RECOMMENDED,
C.N.	APPROVED,
	DATE

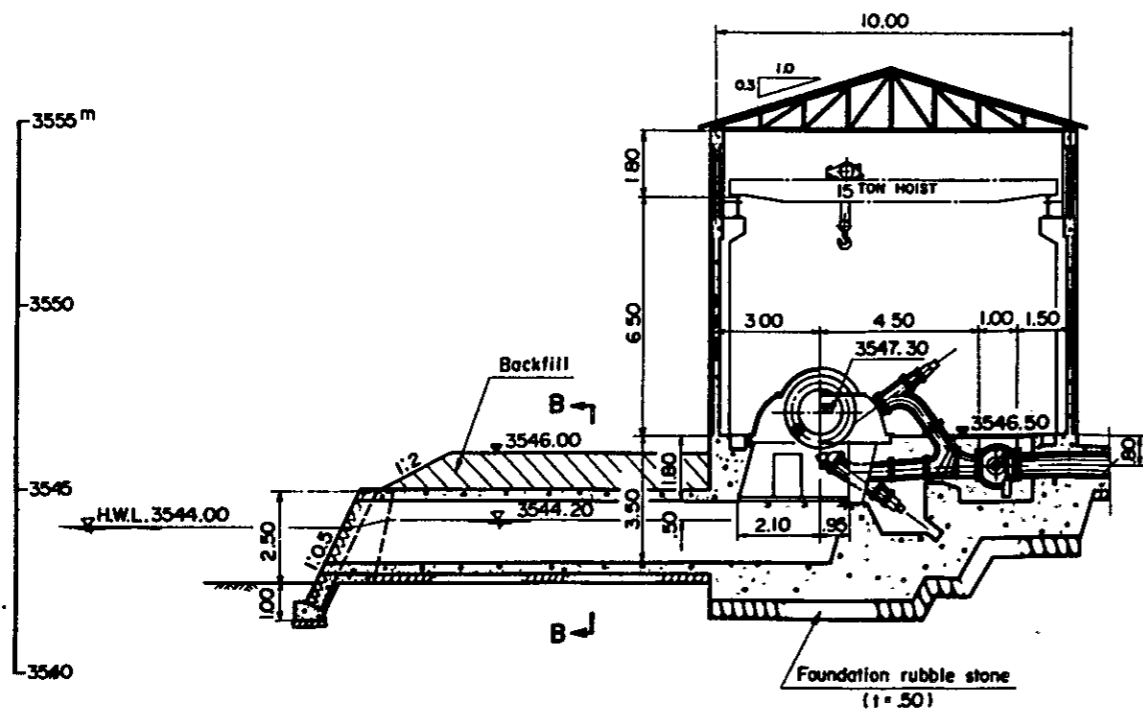
PLAN



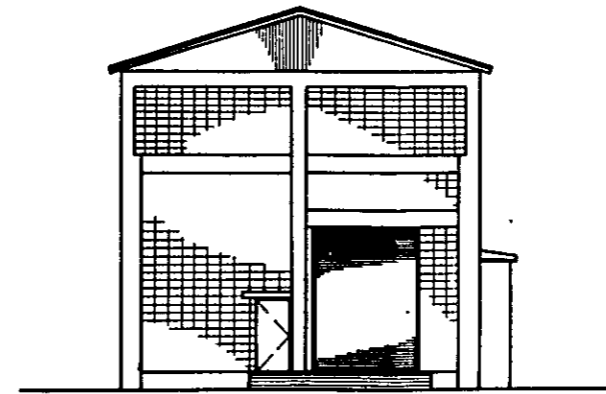
ELEVATION a



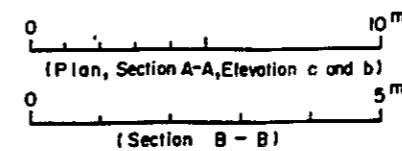
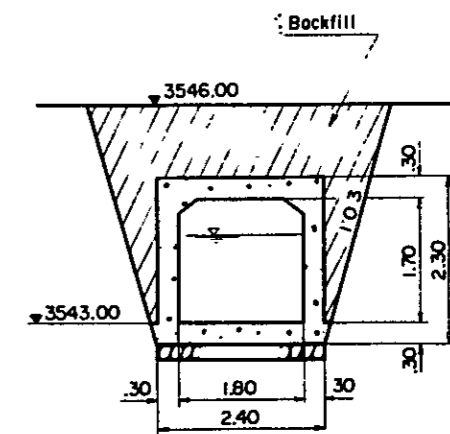
SECTION A - A



ELEVATION b



SECTION B - B



JAPAN INTERNATIONAL COOPERATION AGENCY
HUANZALA HYDRO-POWER PROJECT
POWER STATION
PLAN, ELEVATIONS AND SECTIONS

EPDC International Ltd.
 TOKYO JAPAN

D.R. SUBMITTED;
 T.R. RECOMMENDED;
 C.E. APPROVED.

LOCATION	DATE	DESCRIPTION	BY
REVISION			

DATE

JICA

