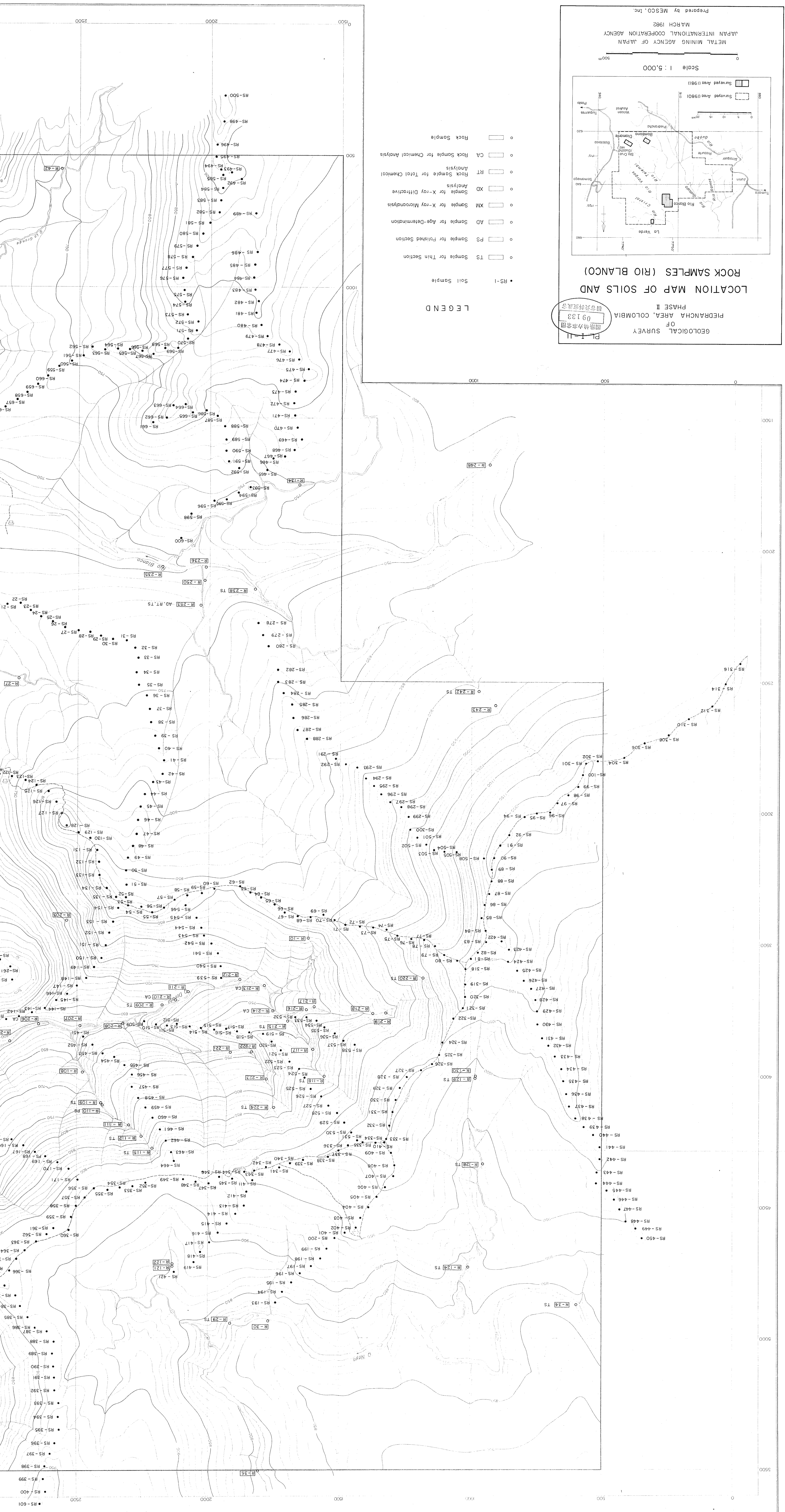


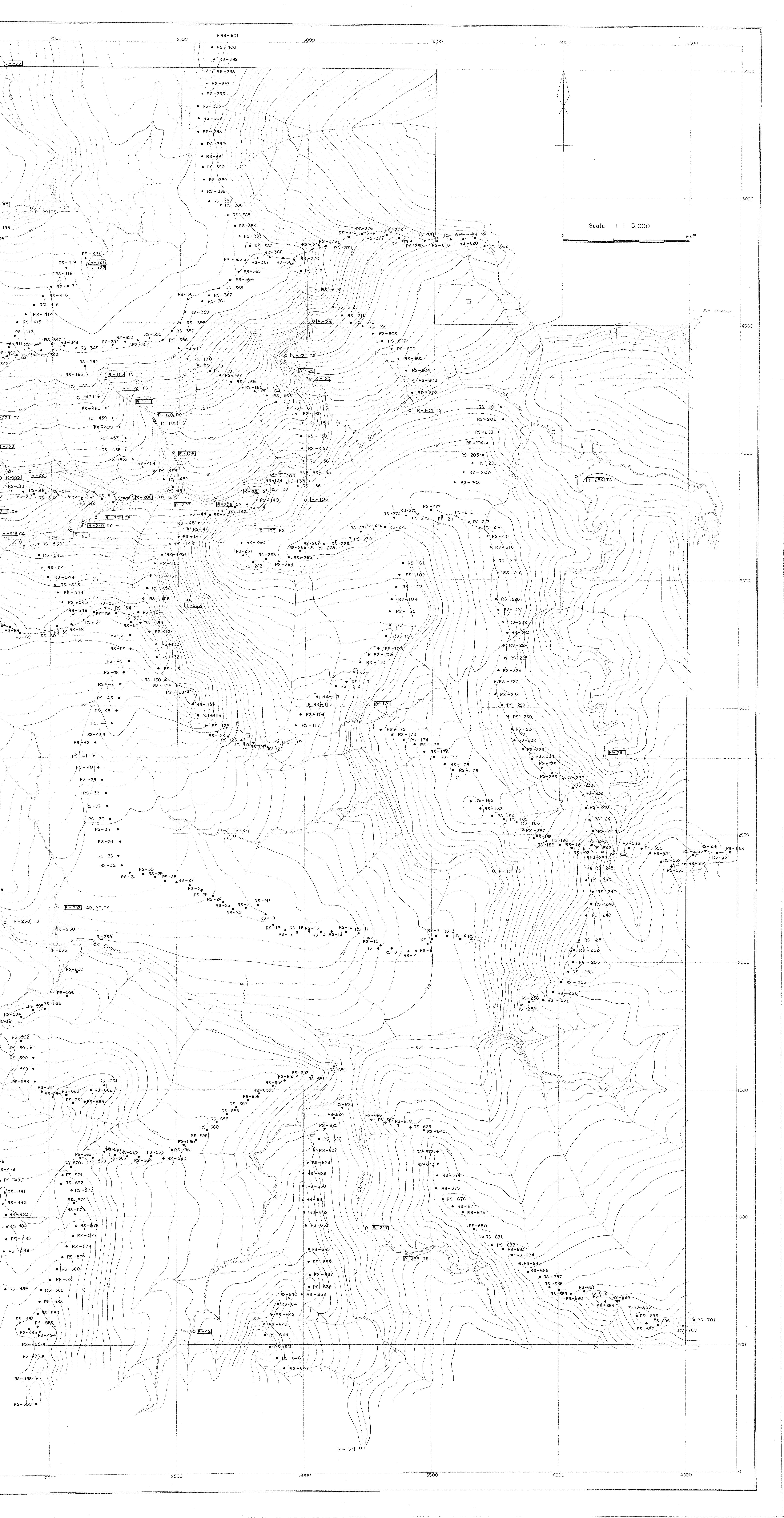
ROCK SAMPLES (RIO BLANCO)
LOCATION MAP OF SOILS AND

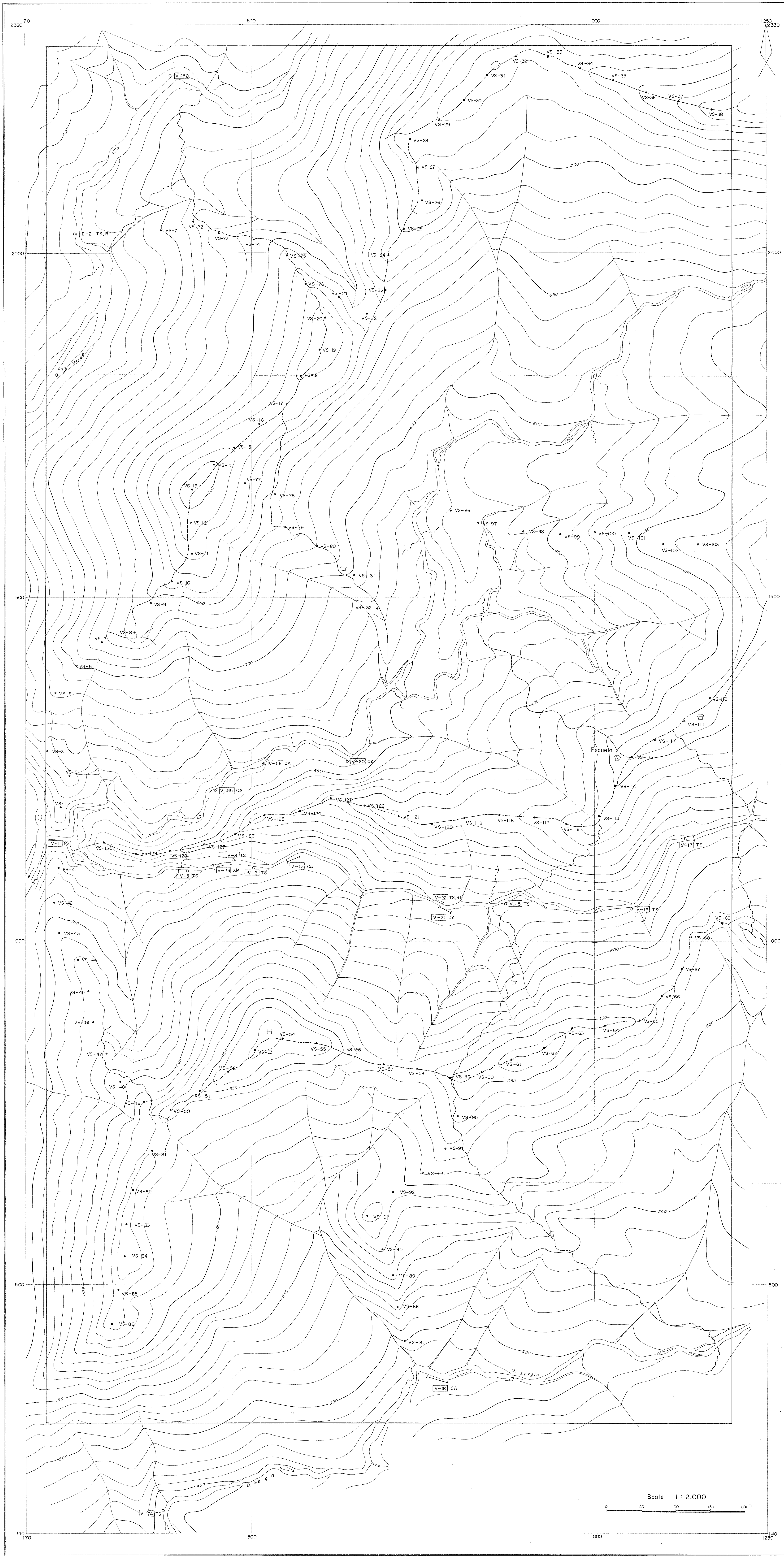
GEOLOGICAL SURVEY
OF
PIEDRANCHA AREA, COLOMBIA
09133
PL-I-11

LEGEND

- RS-1 Soil Sample
- Rock Sample for Thin Section
- PS Sample for Polished Section
- AD Sample for Age-Determination
- XM Sample for X-ray Microanalysis
- XD Sample for X-ray Diffraction Analysis
- RT Rock Sample for Total Chemical Analysis
- CA Rock Sample for Chemical Analysis
- Rock Sample







PL. I-12

GEOLOGICAL SURVEY
OF
PIEDRANCHA AREA, COLOMBIA
PHASE II

09 133
國等天科成成會

LOCATION MAP OF SOILS AND ROCK SAMPLES (LA VERDE)

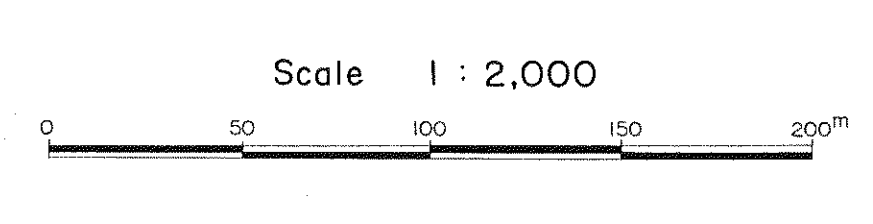
Scale 1 : 2,000

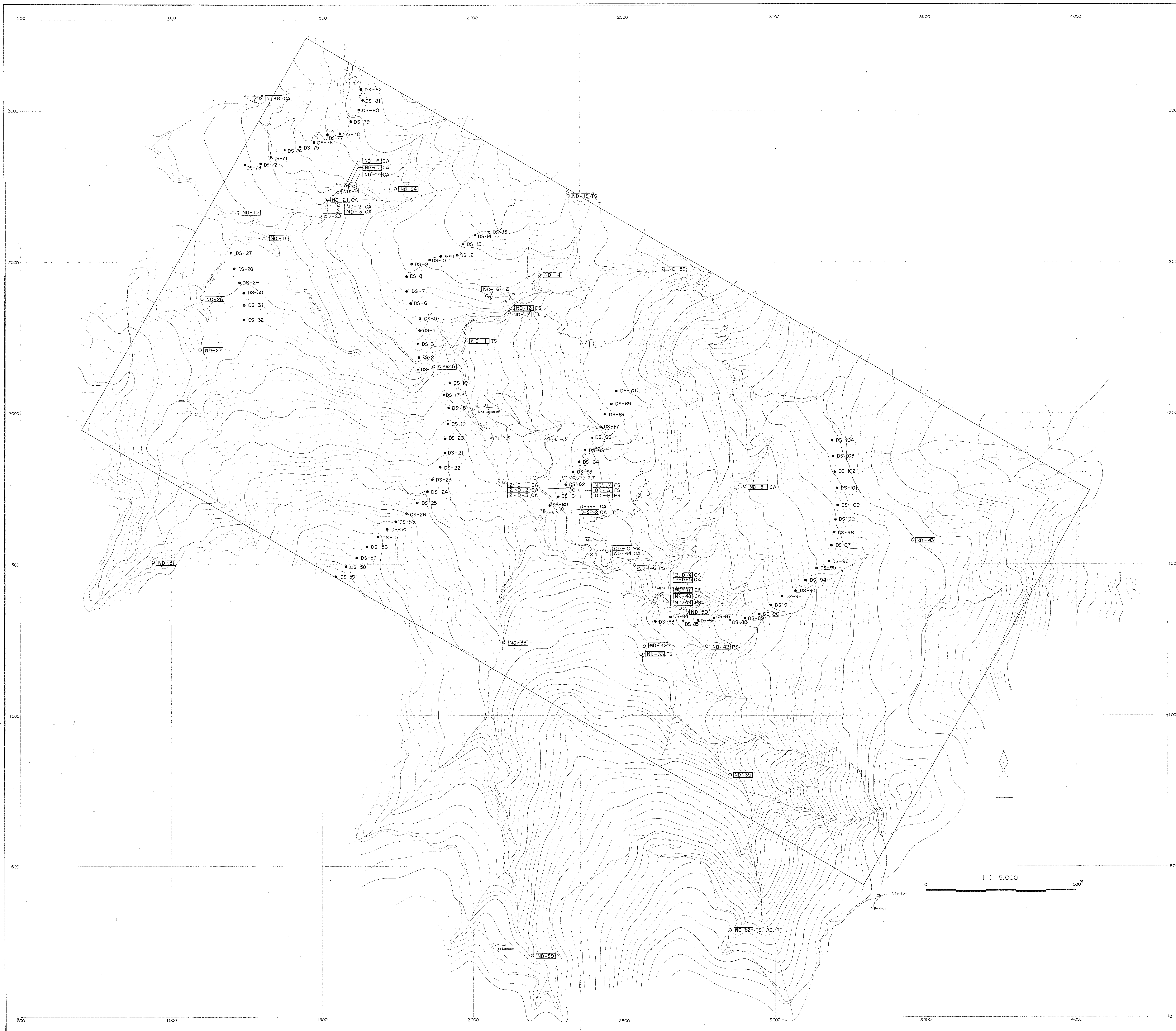
METAL MINING AGENCY OF JAPAN
JAPAN INTERNATIONAL COOPERATION AGENCY
MARCH 1982

Prepared by MESCO, Inc.

LEGEND

- VS-1 Soil Sample
- □ TS Sample for Thin Section
- □ PS Sample for Polished Section
- □ AD Sample for Age-Determination
- □ XM Sample for X-ray Microanalysis
- □ XD Sample for X-ray Diffractive Analysis
- □ RT Rock Sample for Total Chemical Analysis
- □ CA Rock Sample for Chemical Analysis
- □ Rock Sample





PL I-13
 國際協力事業用
 09133
 図書資料室蔵書

GEOLOGICAL SURVEY
 OF
 PIEDRANCHA AREA, COLOMBIA
 PHASE II

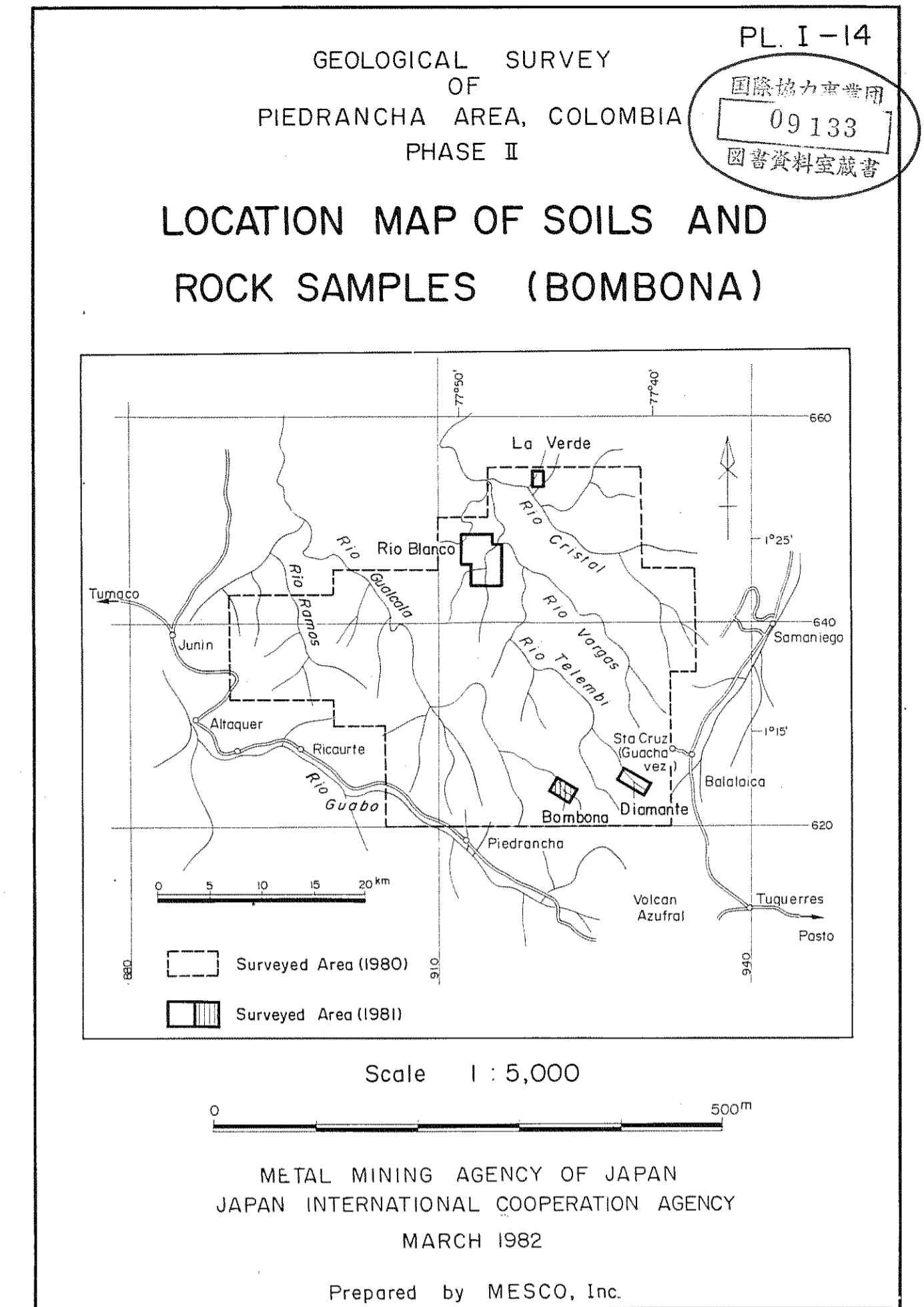
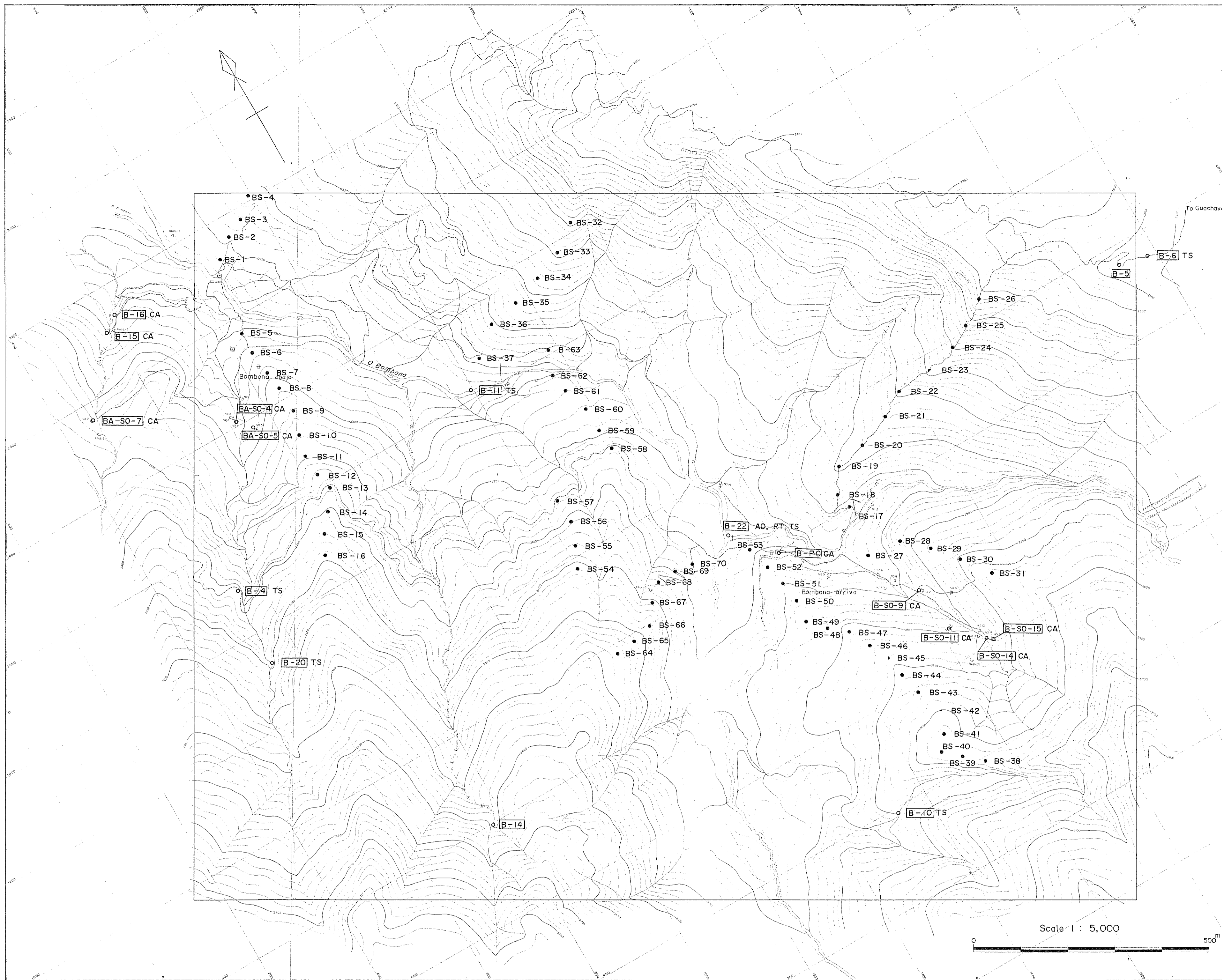
LOCATION MAP OF SOILS AND ROCK SAMPLES (DIAMANTE)

Scale 1 : 5,000

METAL MINING AGENCY OF JAPAN
 JAPAN INTERNATIONAL COOPERATION AGENCY
 MARCH 1982
 Prepared by MESCO, Inc.

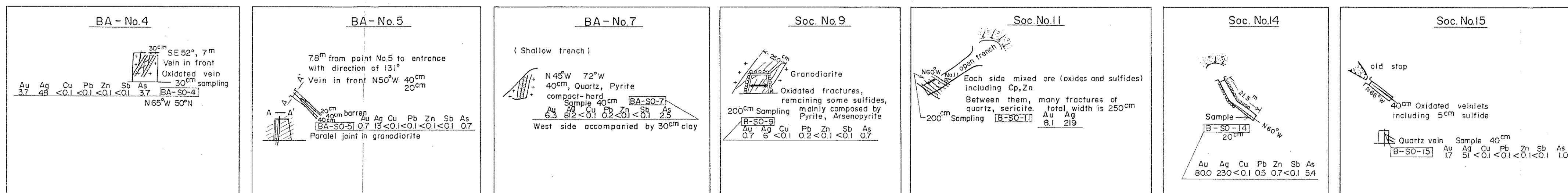
LEGEND

- BS-1 Soil Sample (for Geochemical Survey)
- [] TS Sample for Thin Section
- [] PS Sample for Polished Section
- [] AD Sample for Age-Determination
- [] XM Sample for X-ray Microanalysis
- [] XD Sample for X-ray Diffractive Analysis
- [] RT Rock Sample for Total Chemical Analysis
- [] CA Rock Sample for Chemical Analysis
- [] Rock Sample

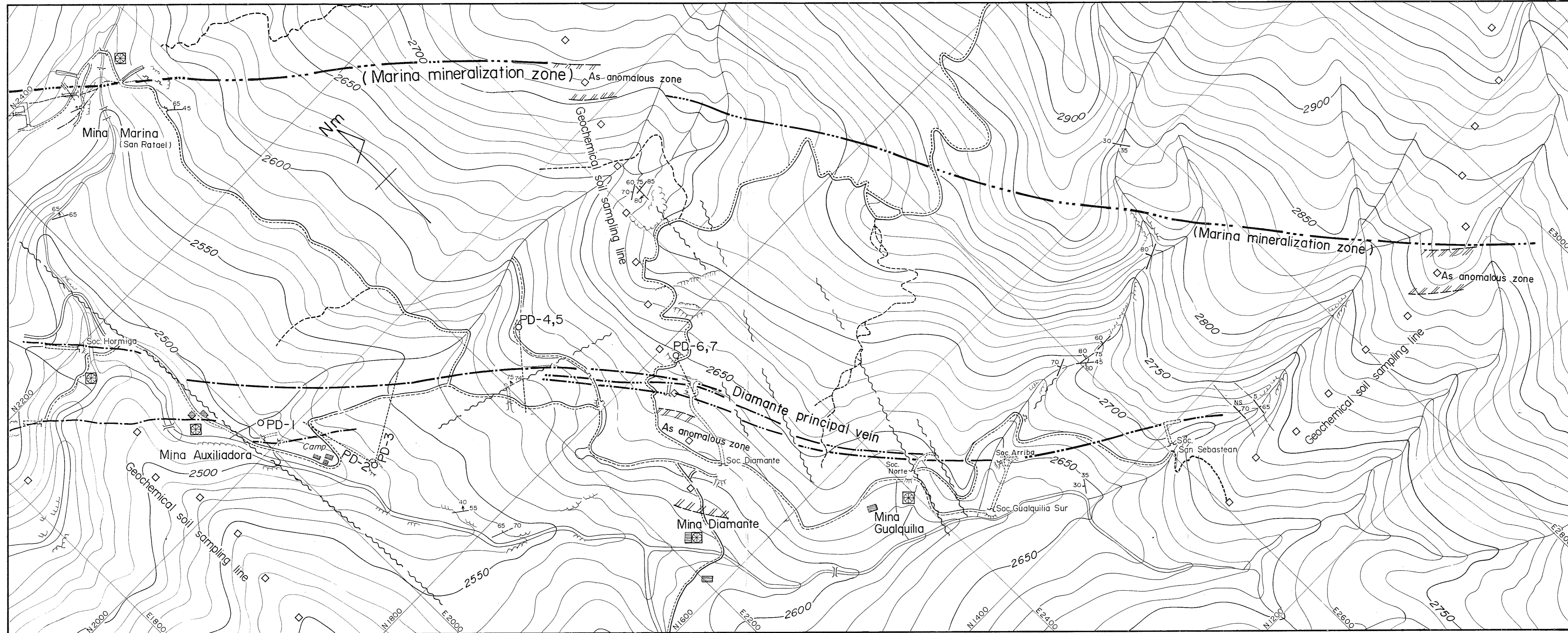


LEGEND

- BS-1 Soil Sample (for Geochemical Survey)
- □ TS Sample for Thin Section
- □ PS Sample for Polished Section
- □ AD Sample for Age-Determination
- □ XM Sample for X-ray Microanalysis
- □ XD Sample for X-ray Diffractive Analysis
- □ RT Rock Sample for Total Chemical Analysis
- □ CA Rock Sample for Chemical Analysis
- □ Rock Sample
- Au Ag Cu Pb Zn Sb As Au ^{g/t} Ag ^{g/t} Cu% Pb% Zn% Sb% As%



Main Part of The Diamante Mining Area scale 1 : 2,000



PL I-15
09133

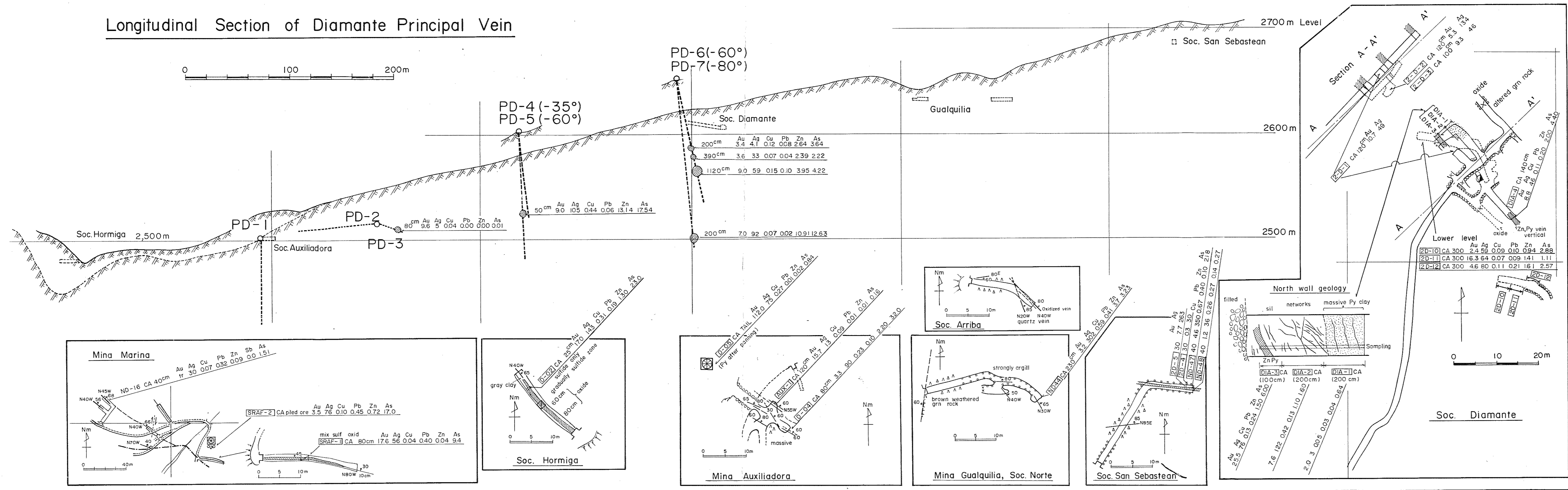
GEOLOGICAL SURVEY OF PIEDRANCHA AREA, COLOMBIA
PHASE II

MAIN PART OF THE DIAMANTE MINING AREA, WITH LONGITUDINAL SECTION AND RESULTS OF CHEMICAL ANALYSIS

Scale 1 : 2,000

METAL MINING AGENCY OF JAPAN
JAPAN INTERNATIONAL COOPERATION AGENCY
1982
prepared by MESCO, Inc.

Longitudinal Section of Diamante Principal Vein



- Legend
- Horse trail
 - Path
 - DDH, PD-1 ~ 7
 - Water mill and house
 - Joint
 - Fissure, Fault
 - Fault, estimated line
 - Vein structure in 2500m ± level
 - " " in 2600m ± "
 - Possible Marina mineralization zone
 - Geochemical soil sampling point
 - As anomalous zone
 - Ore zone, intercepted by drilling
 - Sample for chemical analysis
- Au, Ag : g/t
Cu, Pb, Zn, As : %
(Sb content is not shown because very low or negative)