

GEOLOGICAL SURVEY
 OF
 PIEDRANCHA AREA, COLOMBIA
 PHASE II

PL. I-7
 國際協力事業団
 09133
 図書資料室蔵書

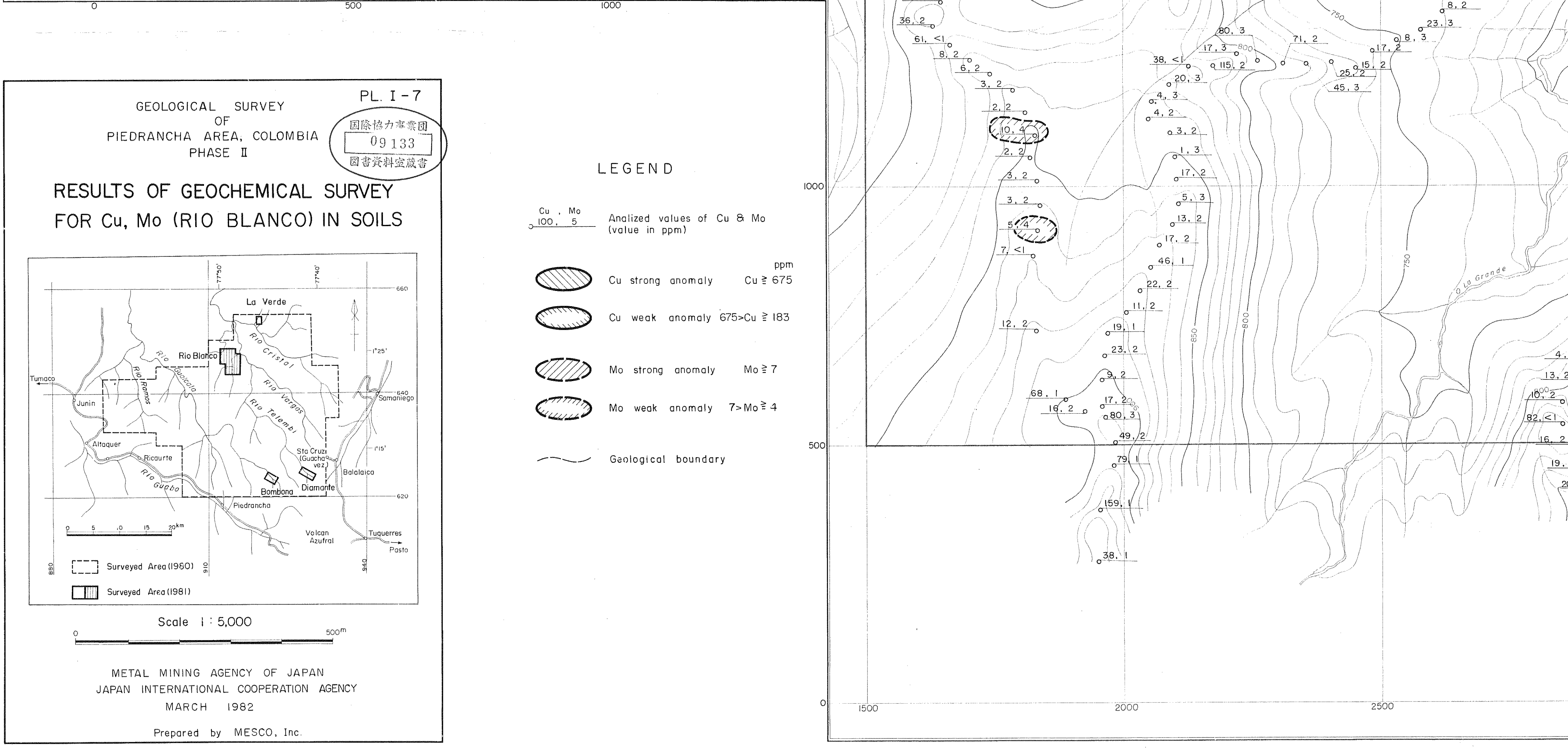
**RESULTS OF GEOCHEMICAL SURVEY
 FOR Cu, Mo (RIO BLANCO) IN SOILS**

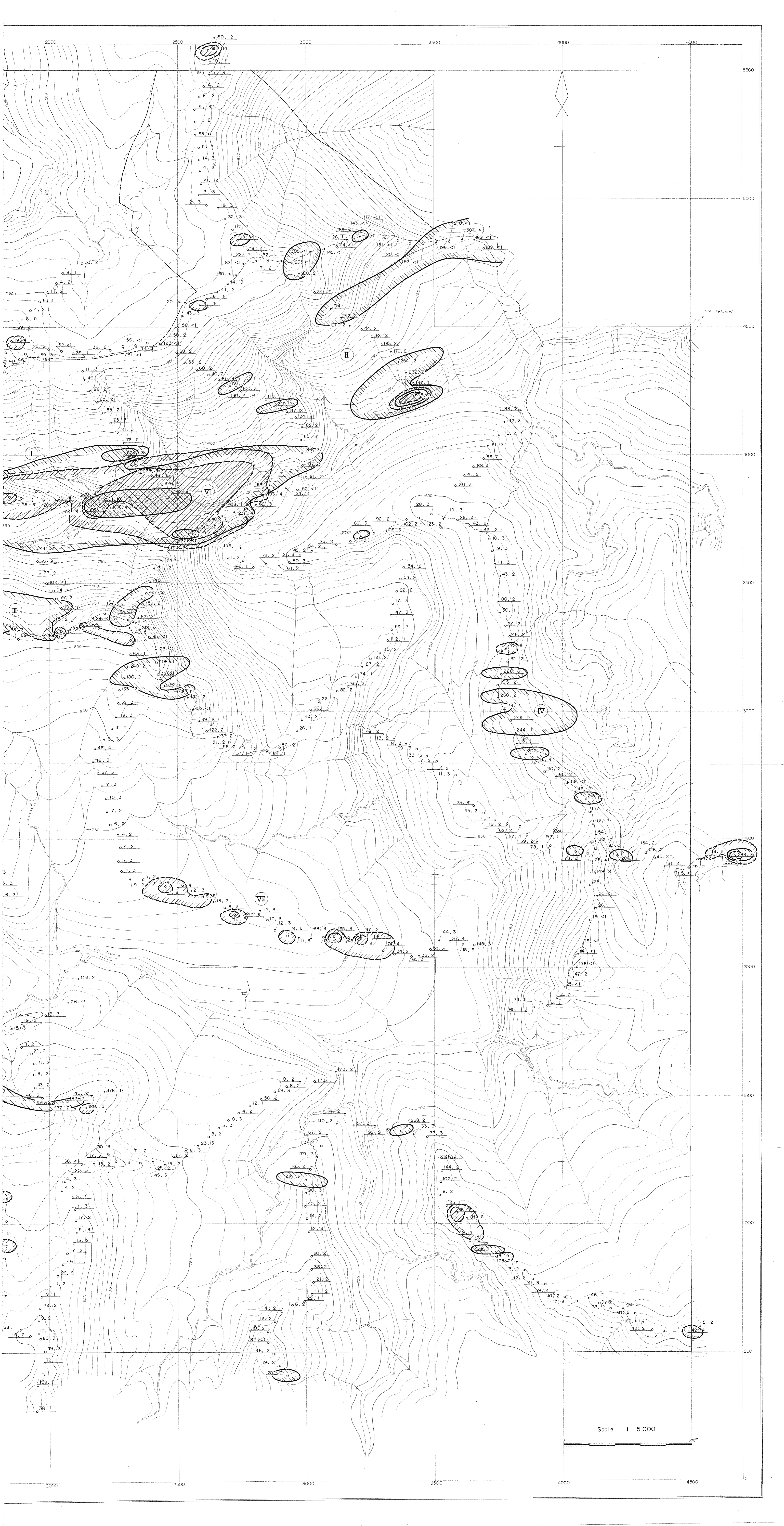
Scale 1:5,000

METAL MINING AGENCY OF JAPAN
 JAPAN INTERNATIONAL COOPERATION AGENCY
 MARCH 1982
 Prepared by MESCO, Inc.

LEGEND

Cu . Mo 100 . 5	Analyzed values of Cu & Mo (value in ppm)	
	Cu strong anomaly	Cu ≥ 675
	Cu weak anomaly	675 > Cu ≥ 183
	Mo strong anomaly	Mo ≥ 7
	Mo weak anomaly	7 > Mo ≥ 4
	Geological boundary	





Scale 1:5,000



1000 1500 2000 2500 3000 3500 4000

3000

2500

2000

1500

3000

2500

2000

1500

1000

500

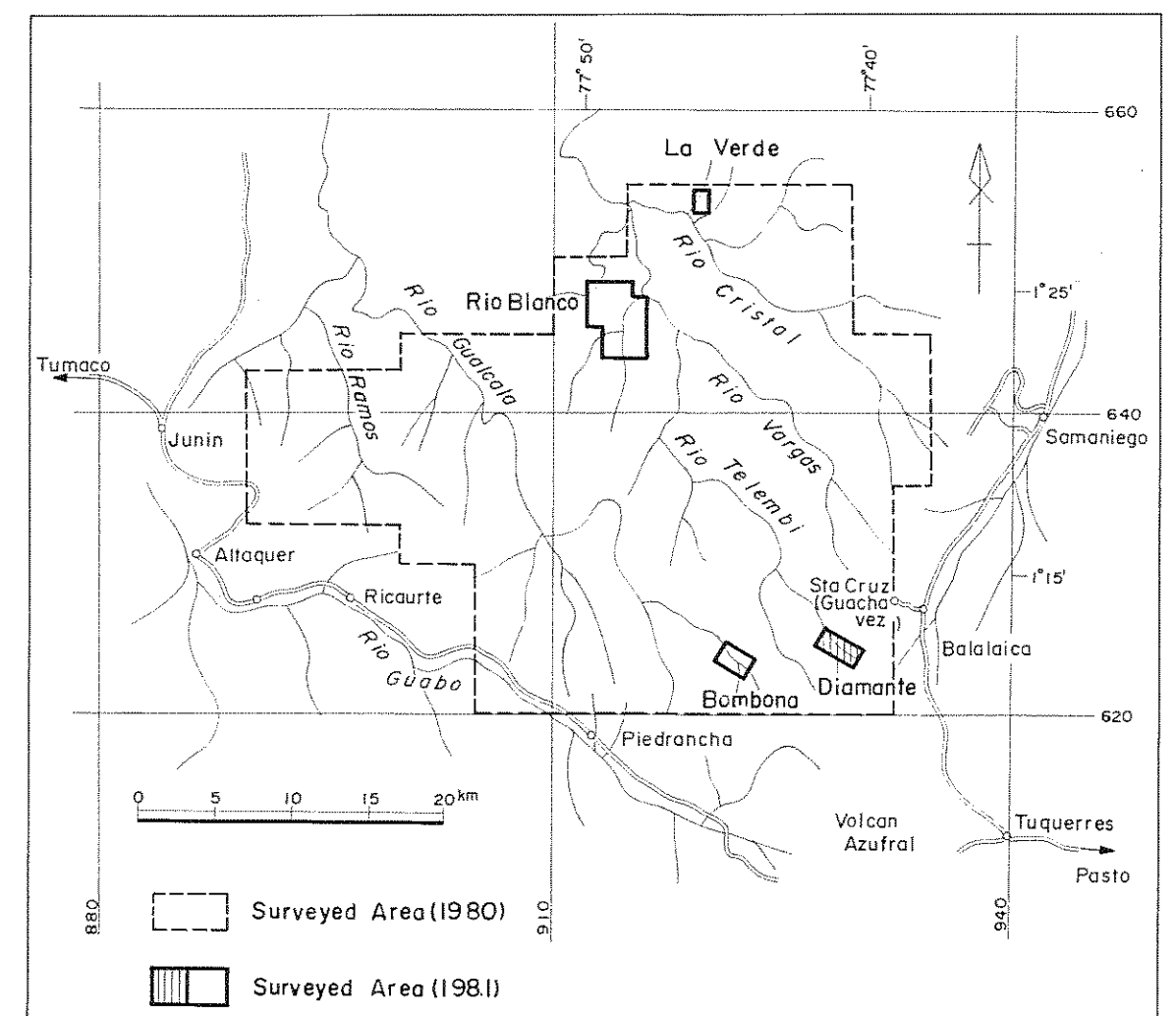


1 : 5,000

GEOLOGICAL SURVEY
OF
PIEDRANCHA AREA, COLOMBIA
PHASE II

PI 1-9
国際協力事業団
09133
国省資料室蔵書

RESULTS OF GEOCHEMICAL SURVEY
FOR Zn, As (DIAMANTE) IN SOILS

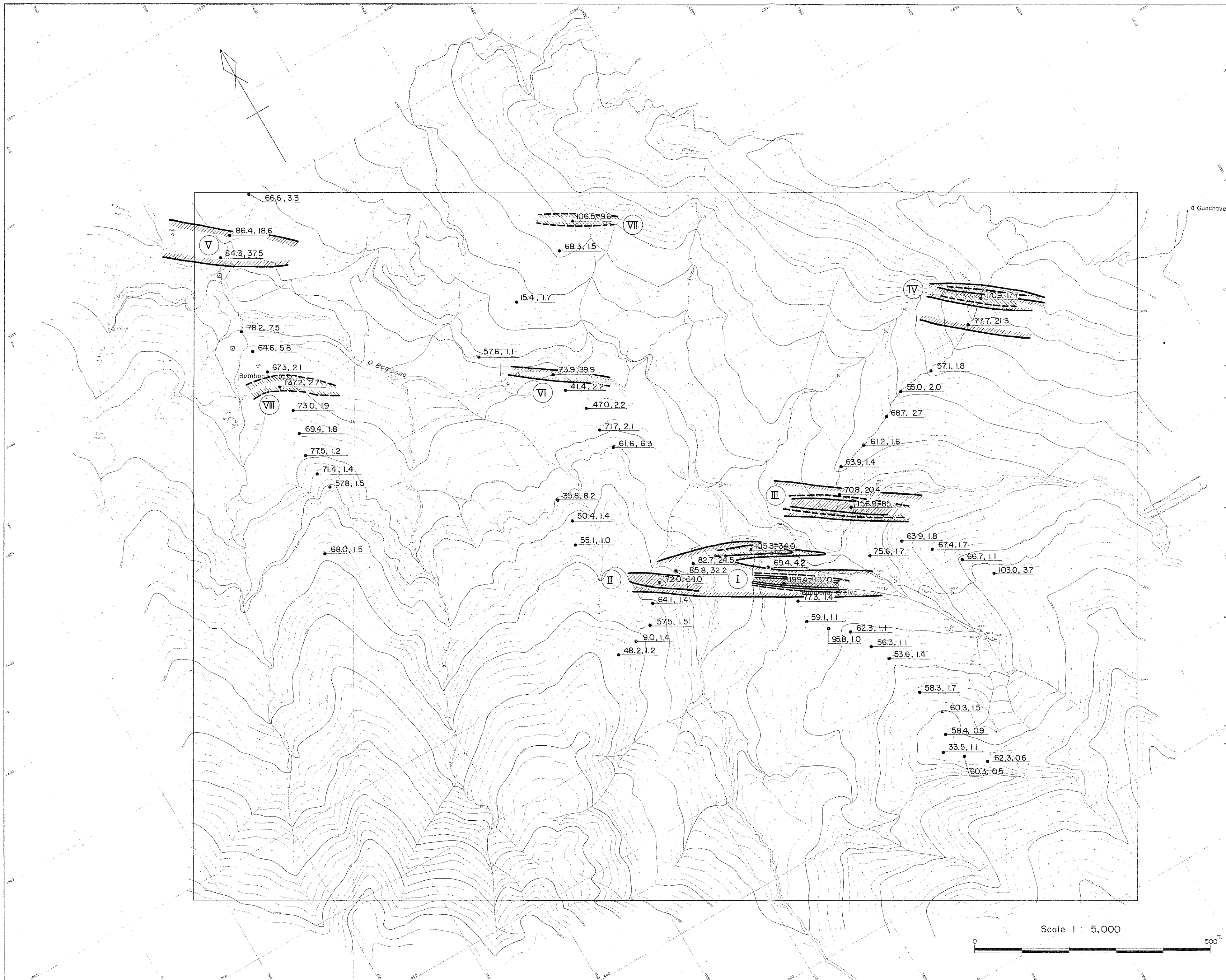


Scale 1 : 5,000

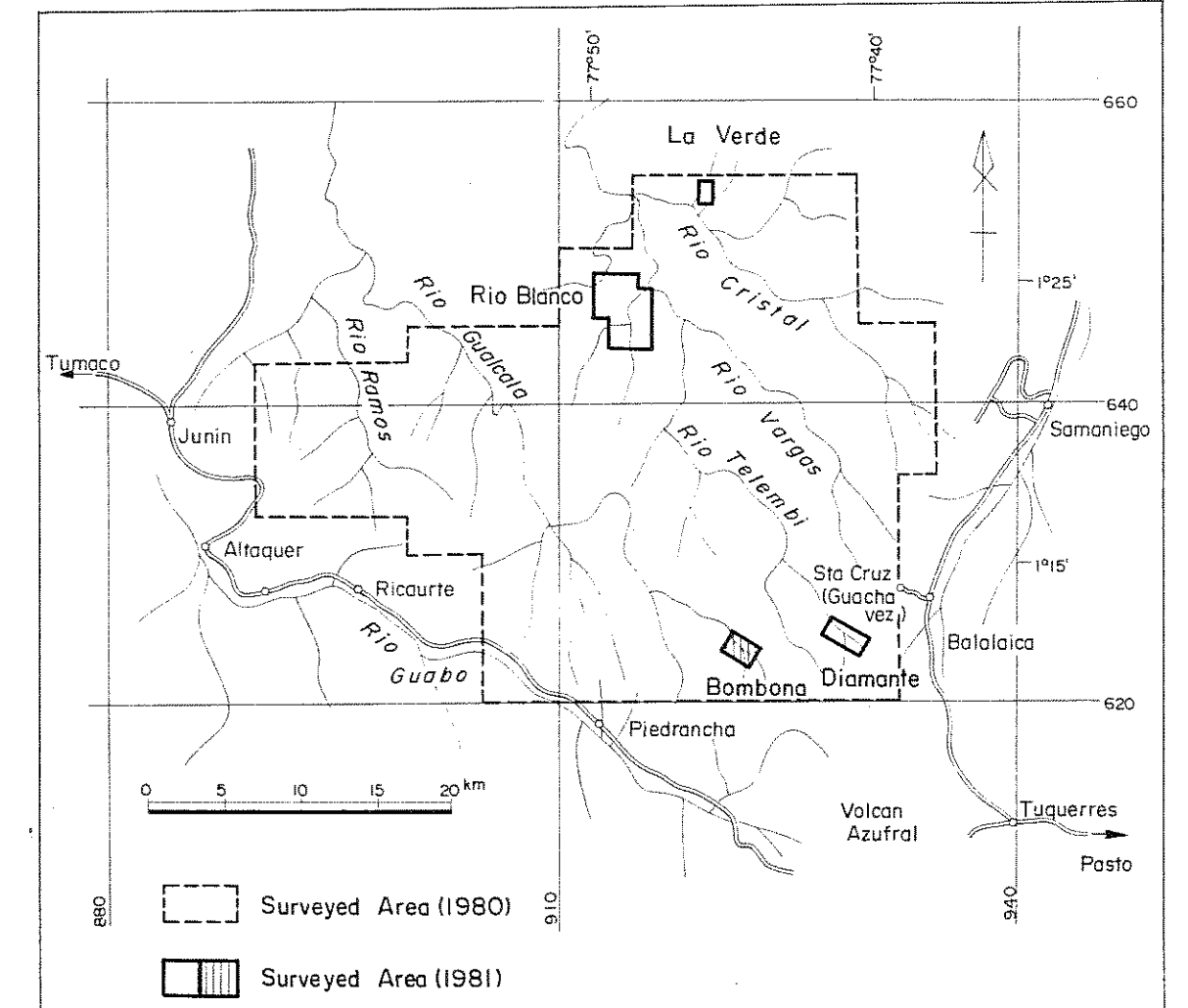
METAL MINING AGENCY OF JAPAN
JAPAN INTERNATIONAL COOPERATION AGENCY
MARCH 1982
Prepared by MESCO, Inc.

LEGEND

- 44.8, 12.3 Analyzed values of Zn & As (values in ppm)
- Zn strong anomaly Zn ≥ 182.0
- Zn weak anomaly 182.0 > Zn ≥ 116.4
- As strong anomaly As ≥ 64.4
- As weak anomaly 64.4 > As ≥ 24.0
- Geological boundary
- Portal and tunnel
- Mining plant
- Cabin



RESULTS OF GEOCHEMICAL SURVEY
FOR Zn, As (BOMBONA) IN SOILS



Scale 1 : 5,000

METAL MINING AGENCY OF JAPAN
JAPAN INTERNATIONAL COOPERATION AGENCY
MARCH 1982

Prepared by MESCO, Inc.

LEGEND

- Zn, As
100.5, 2.7
Analyzed values of Zn & As
(values in ppm)
- Zn strong anomaly Zn \geq 162.6ppm
- Zn weak anomaly 162.6 > Zn \geq 103.3
- As strong anomaly As \geq 63.5
- As weak anomaly 63.5 > As \geq 14.6
- Portal and tunnel
- Mining plant
- Cabin