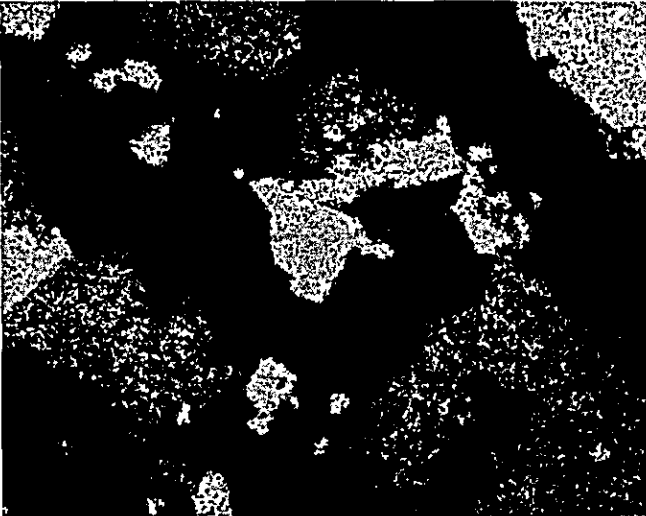
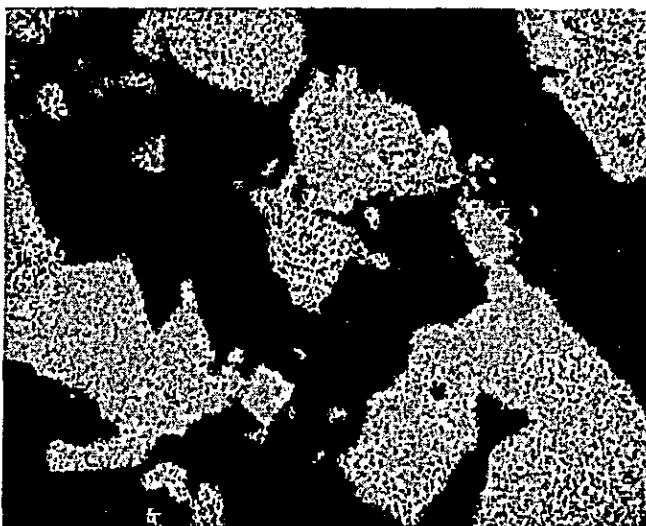




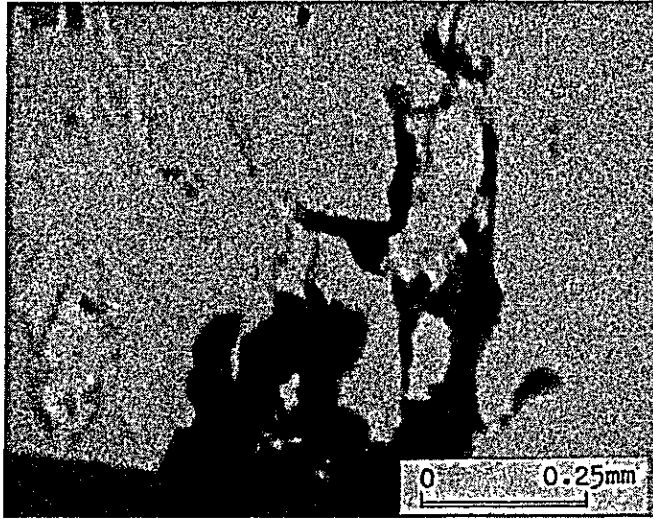
As X-ray image



Fe X-ray image

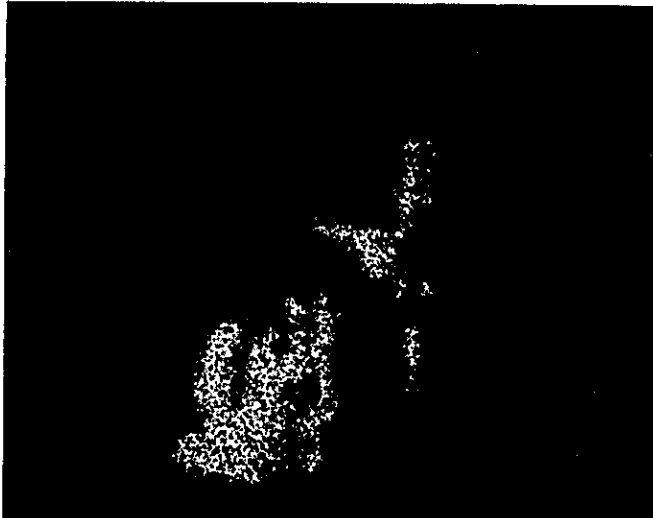


S X-ray image



Absorbed electron image

Proustite ($3 \text{Ag}_2\text{S} \cdot \text{As}_2\text{S}_3$)

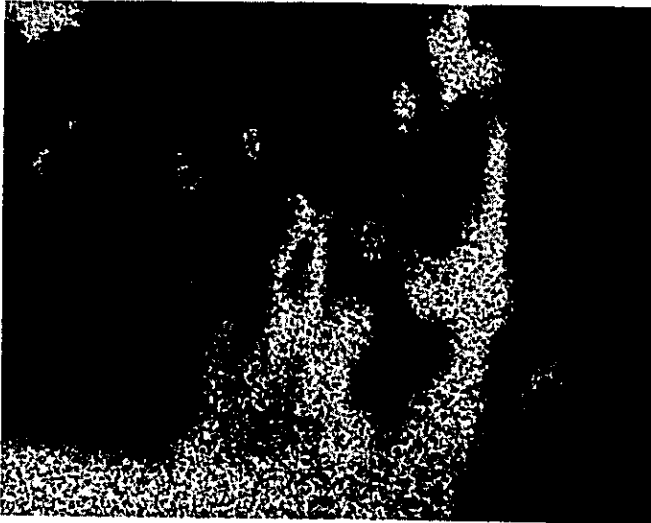


Ag X-ray image

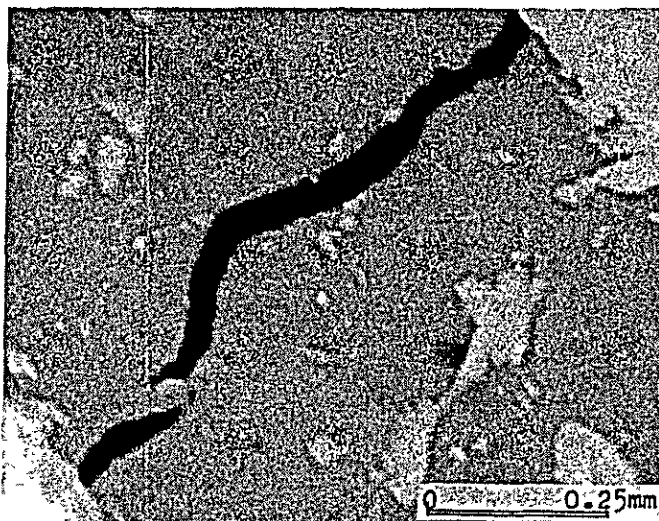


As X-ray image

Sample No. : PD-1376.4
Locality : Diamante
Accel. volt. : 15 kV
Absorb. elect. : 0.1 μA

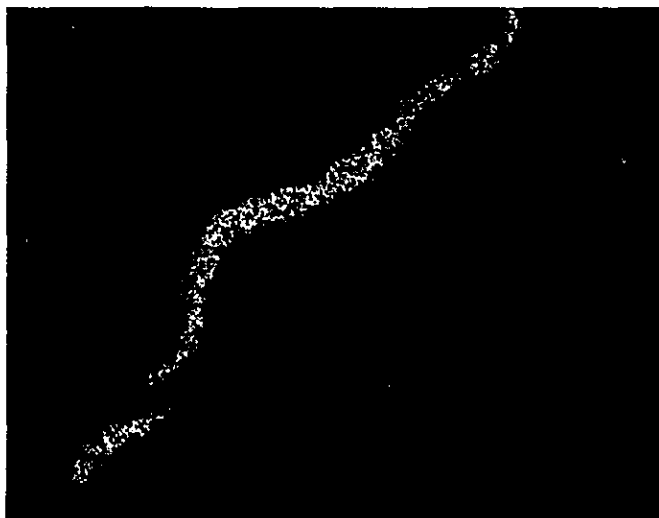


S X-ray image

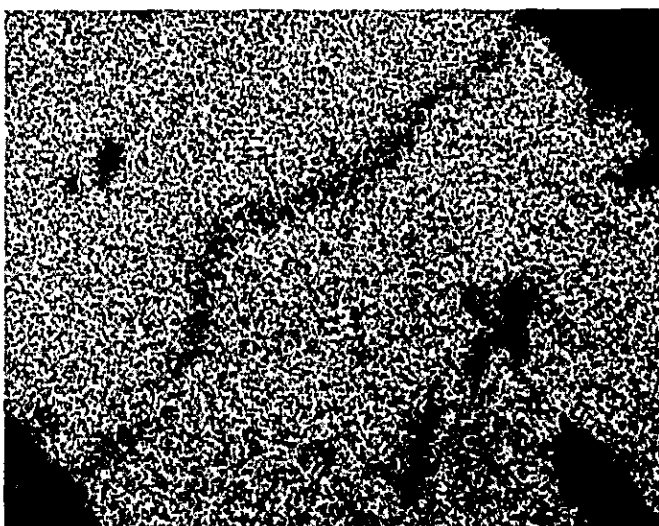


Absorbed electron image

Veinlet of argentite
cutting both sphalerite
and chalcopyrite.

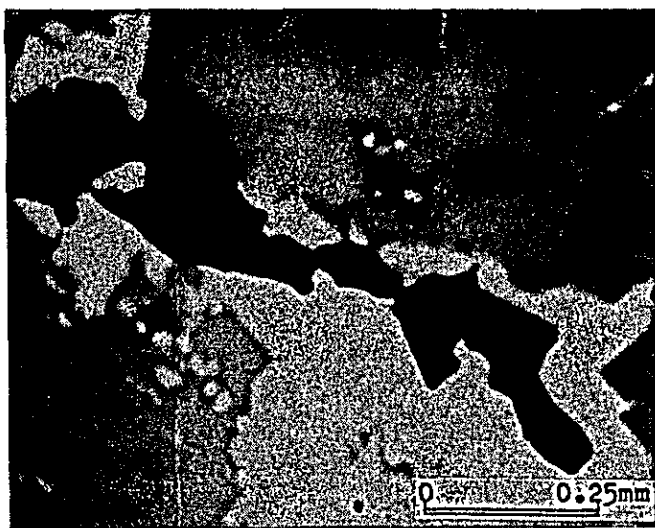


Ag X-ray image



S X-ray image

Sample No. : PD-1376.5
Locality : Diamante
Accel. volt. : 25 kV
Absorb. elect. : 0.2 μ A

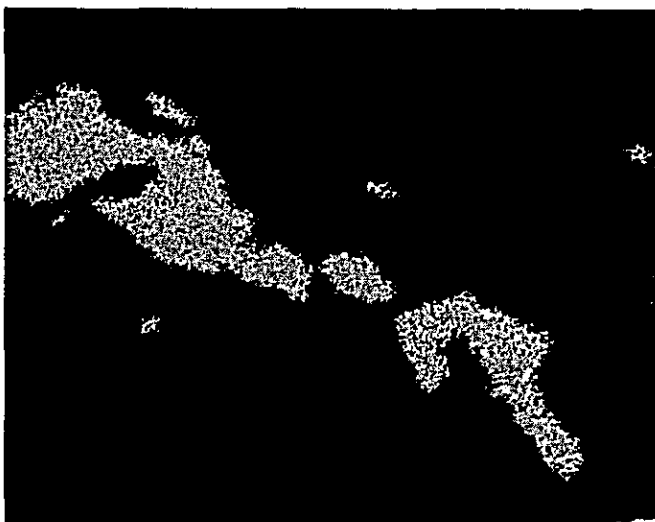


Absorbed electron image

Ag-Pb-Bi mineral
cutting pyrite.



Ag X-ray image

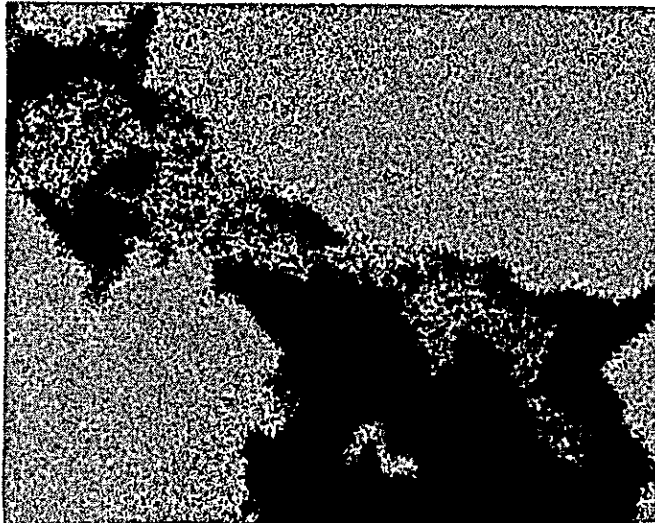


Pb X-ray image

Sample No. : PD-14124
Locality : Diamante
Accel. volt. : 25 kV
Absorb. elect. : 0.2 μ A



Bi X-ray image



S X-ray image

A. II -20 Summary of X-ray diffractive analysis

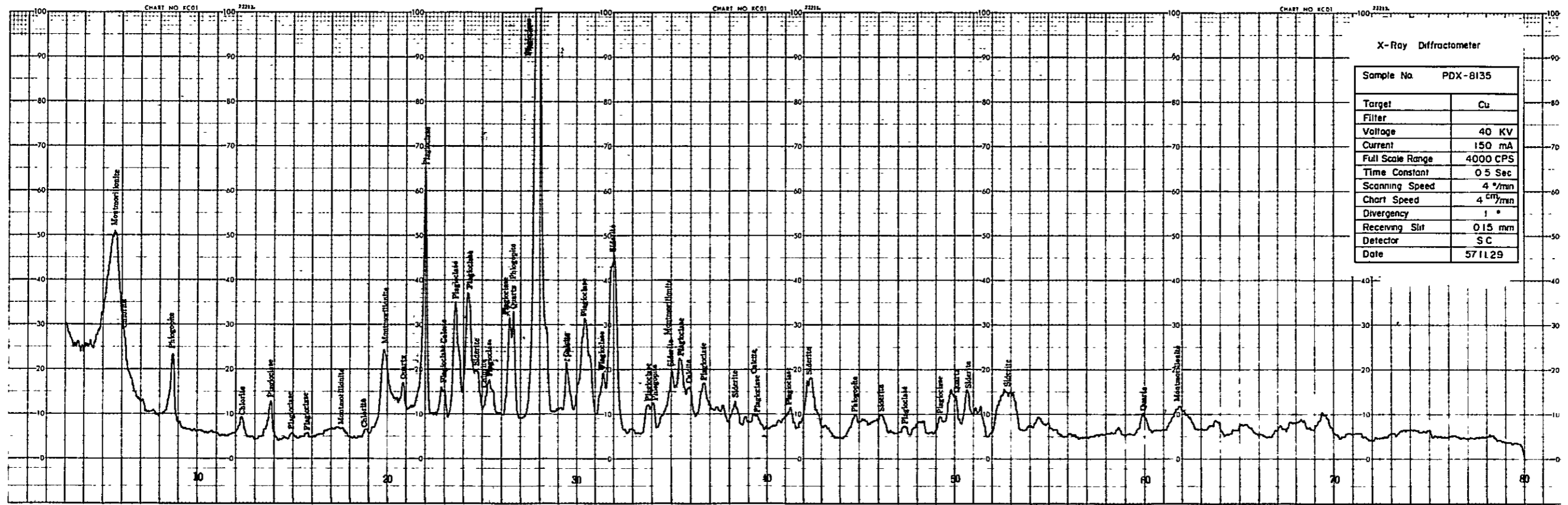
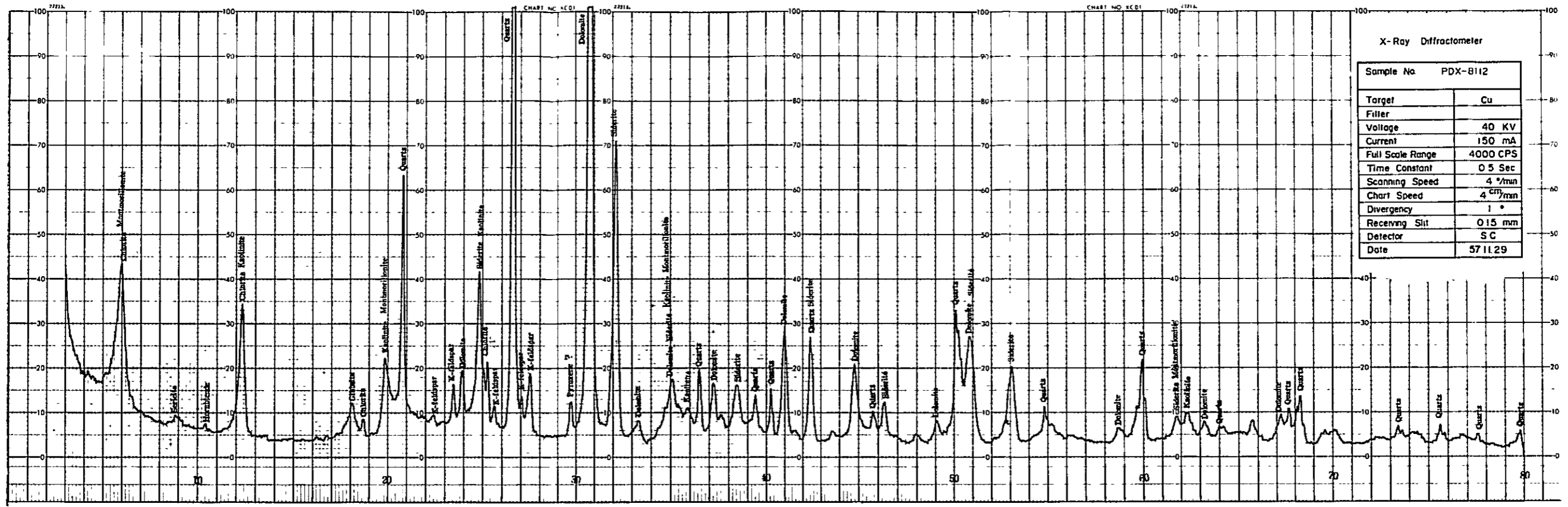
Sample No.	Locality	Depth (m)	Mineral	Geology	Quartz	Plagioclase	K-feldspar	Calcite	Pyroxene	Hornblende	Montmorillonite	Sericite	Phlogopite	Chlorite	Kaolinite	Gibbsite	Dolomite	Siderite	Sphalerite	Pyrite	Chalcopyrite
PDX-8112	PD - 8	112		Clayey quartz v.	V		L	L	L	S	C			C	L	L	V	M			
8135	8	135		Clayey Vein	L	V		L			M		L	L			V	C			
975	9	75		Argillized Rock	V		S	L				S		M			V	*L	L	S	
983	9	83		Argillized Rock	V						C	S			L		V	M	L		
10105	10	105		Sulphide quartz v.	V		C					L					C	V			
10116	10	116		Clayey Vein	V						M	S		L			L	L	L		
14164	14	164		Clayey Vein	V			S				L		M			M	L	L	L	
15110	15	110		Argillized Vein	V	C						L		L			M	S	L	S	L
15116	15	116		Clayey quartz v.	V		L				M	L		C			L				
15122	15	122		Clayey Vein	V			S						V						L	

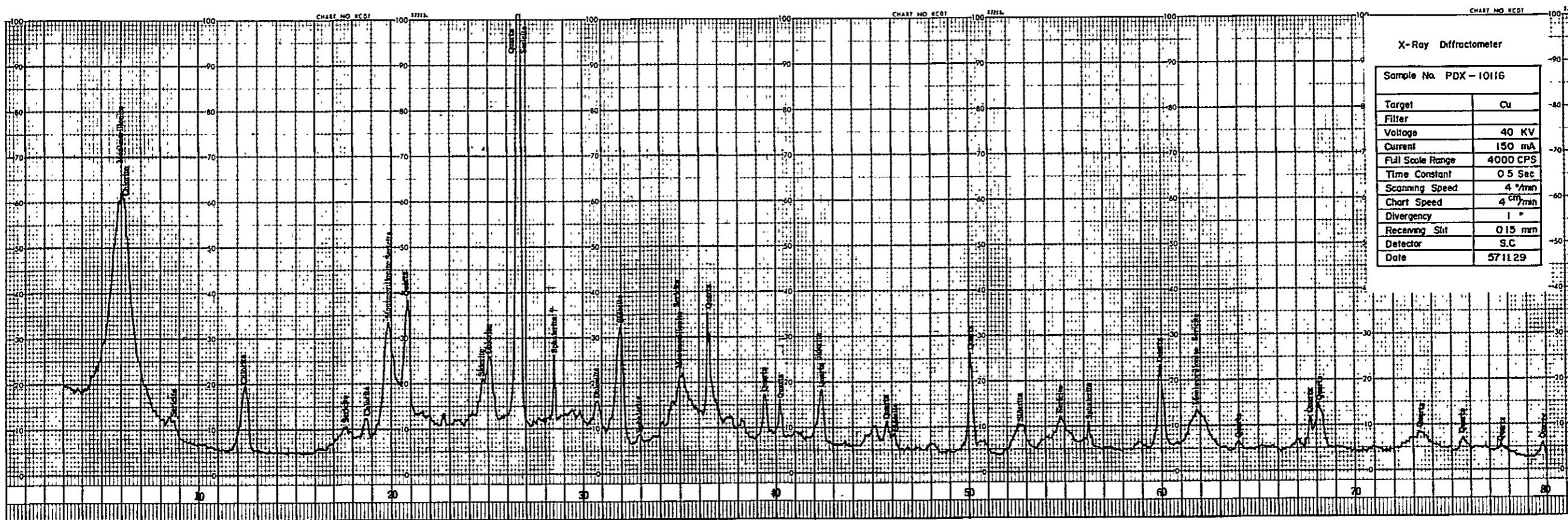
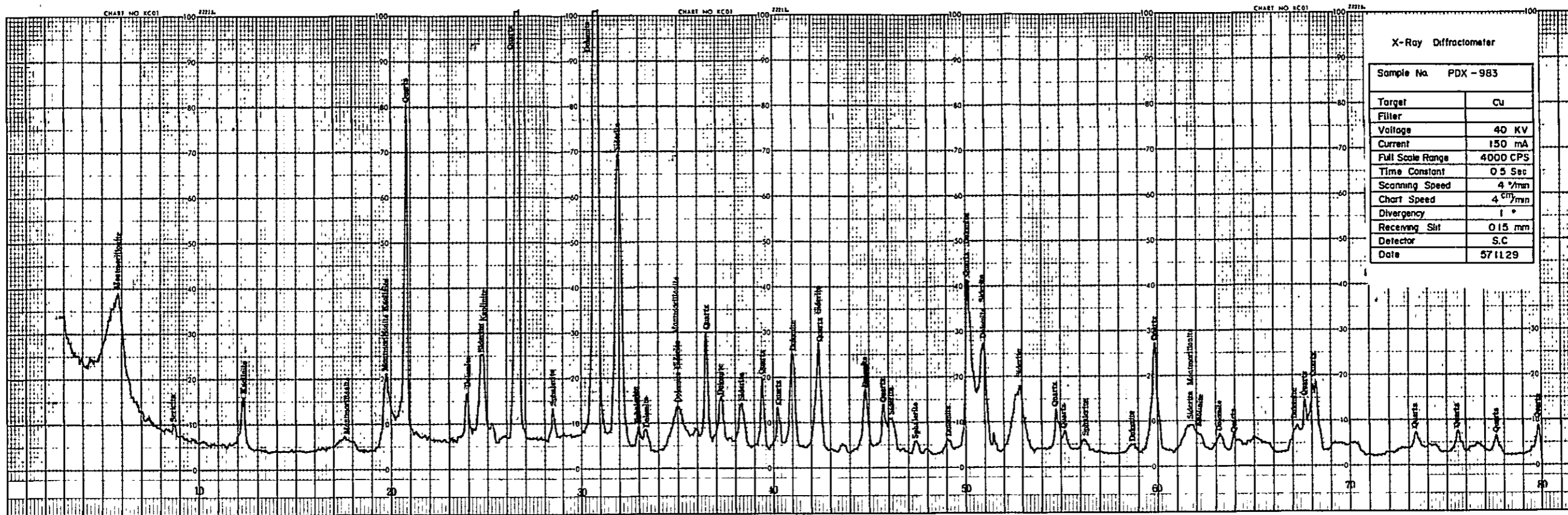
Key to the table; *L: Including Manganese Oxides

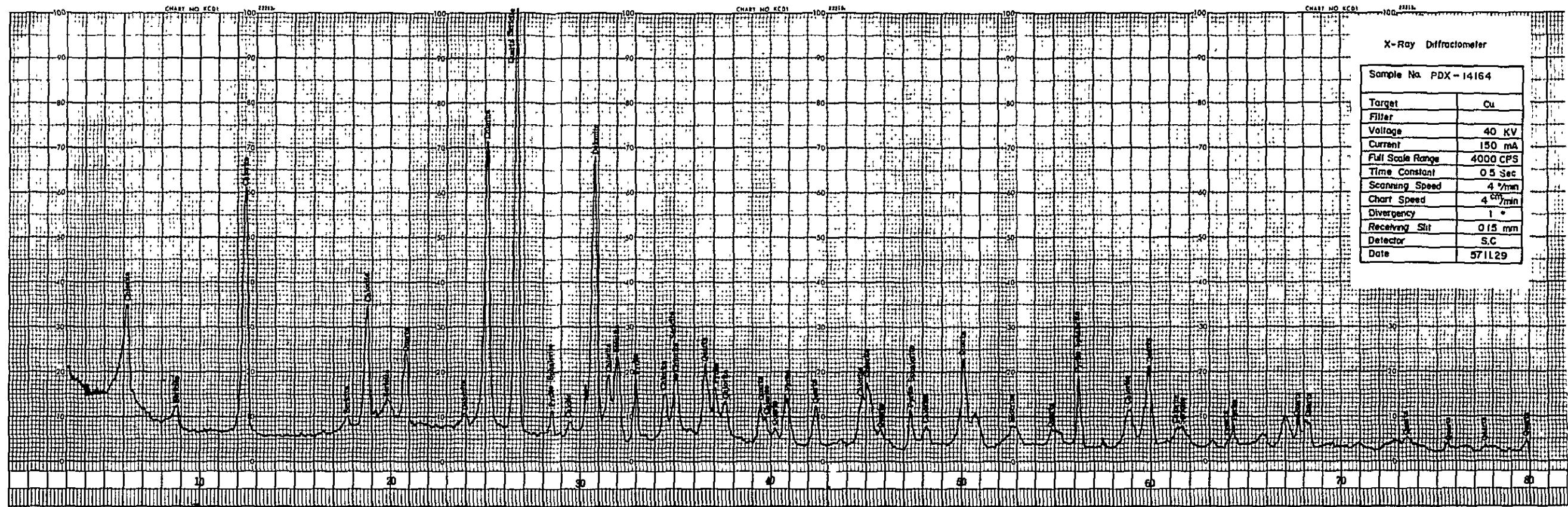
V: Very much M: much C: common L: less S: scarcely



A. II-21 Charts of X-ray diffraction test

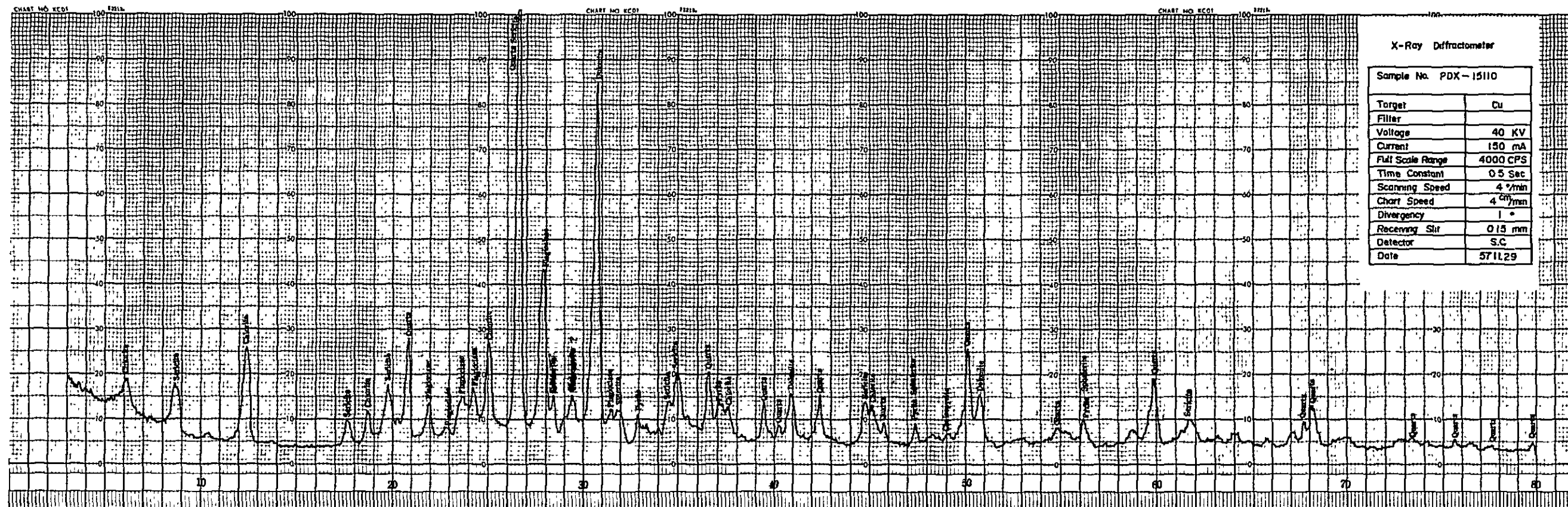






X-Ray Diffractometer

Sample No. PDX-14164	
Target	Cu
Filter	
Voltage	40 KV
Current	150 mA
Full Scale Range	4000 CPS
Time Constant	0.5 Sec
Scanning Speed	4 °/min
Chart Speed	4 cm/min
Divergency	1 °
Receiving Slit	0.15 mm
Detector	S.C
Date	571129



X-Ray Diffractometer

Sample No. PDX-15110	
Target	Cu
Filter	
Voltage	40 KV
Current	150 mA
Full Scale Range	4000 CPS
Time Constant	0.5 Sec
Scanning Speed	4 °/min
Chart Speed	4 cm/min
Divergency	1 °
Receiving Slit	0.15 mm
Detector	S.C
Date	571129