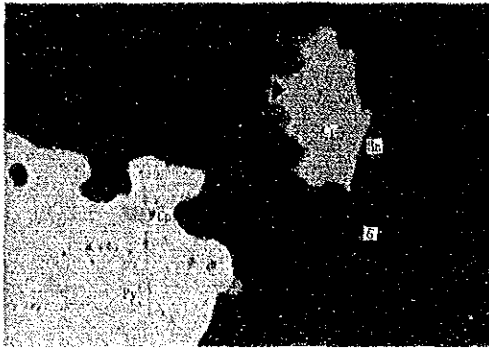


A. 3-25(2) FOTOMICROGRAFIA DE LAS SECCIONES PULIDAS

ABREVIACION

Cp ; 黄銅鉍	calcopirita CuFeS_2
Bn ; 斑銅鉍	bornita Cu_5FeS_4
Cub; キューバ鉍	cubanita $\text{Cu}_2\text{S}, \text{Fe}_4\text{S}_5$
Td ; 四面銅鉍	tetraedrita $5\text{Cu}_2\text{S}, 2(\text{CuFe})\text{S}, 2\text{Sb}_2\text{S}_3$
Bo ; 車骨鉍	burnonita $\text{Cu}_2\text{S}, 2\text{PbS}, \text{Sb}_2\text{S}_3$
Sp ; 閃亜鉛鉍	esfalerita ZnS
Mo ; 輝水鉛鉍	molibdenita MoS_2
Py ; 黄鉄鉍	pirita FeS_2
Po ; 磁硫鉄鉍	pirrotita Fe_{1-x}S
Mag; 磁鉄鉍	magnetita Fe_3O_4
Hem; 赤鉄鉍	hematita Fe_2O_3
Ml ; 針ニッケル鉍	millerita NiS



CJM-6 : 46.3m

Bornita(Bn) coexiste
con la Calcopirita(Cp) y
la Calcopirita fina en
la Pirita(Py)

(nicol normal)

0 0.04mm

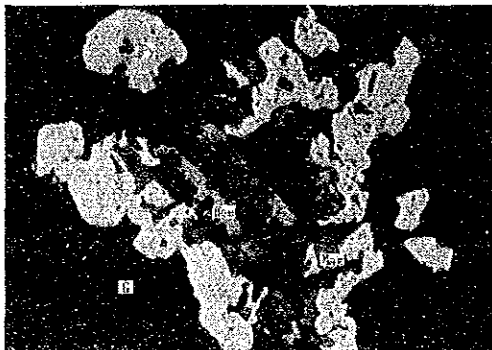


CJM-6 : 46.3m

Bornita(Bn) y
Calcopirita(Cp)

(nicol normal)

0 0.04mm



CJM-6 : 91.8m

Pirita(Py), Magnetita
(Mag) y Hematita(Hem)

(nicol normal)

0 0.1mm



CJM-6 : 91.8m

Cristal anisotrópico
de Hematita(Hem)

(nicos cruzados)

0 0.1mm



CJM-6 : 91.8m

Calcopirita(Cp) y
Pirrotita(Po) en
la pirita(Py)

(nicol normal)

0 0.04mm

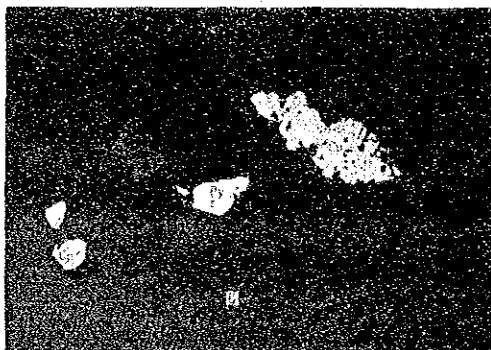


CJM-6 : 132.2m

Calcopirita(Cp),
Magnetita(Mag) y
Hematita(Hem)

(nicol normal)

0 0.1mm

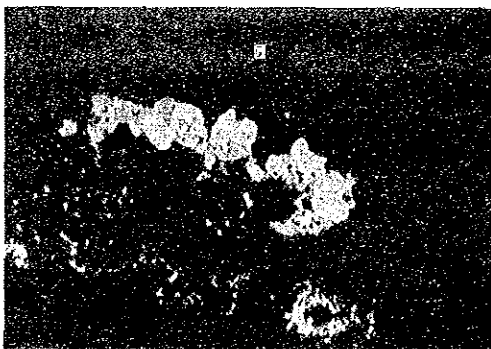


CJM-6 : 132.2m

Calcopirita(Cp) y
pirita(Py)

(nicol normal)

0 0.2mm

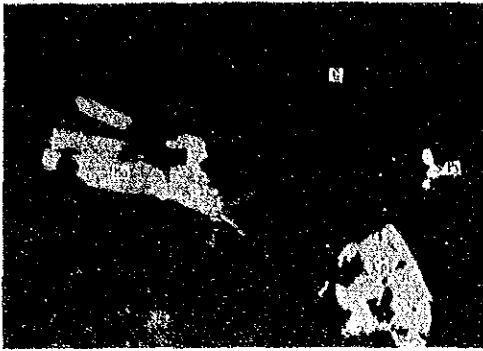


CJM-7 : 38.3m

Calcopirita(Cp) existe
alrededor de la Pirita
(Py)

(nicol normal)

0 0.1mm

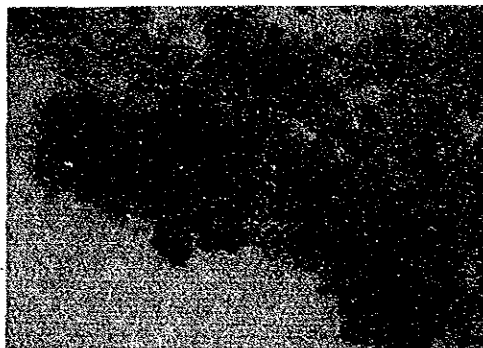


0 0.1mm

CJM-7 : 38.3m

Molibdenita(Mo),
Calcopirita(Cp) y
Pirita(Py)

(nicol normal)

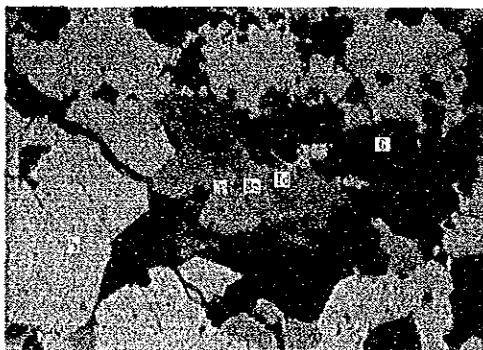


0 0.1mm

CJM-7 : 38.3m

Cristal anisotropico
fuerte de Molibdenita
(Mo)

(nicos cruzados)

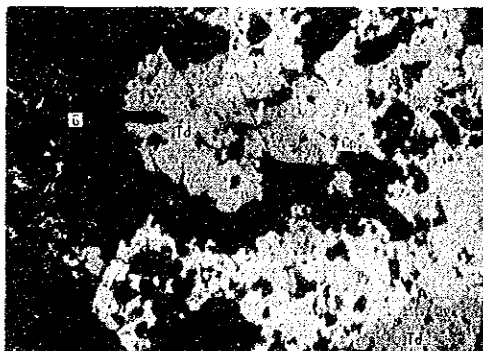


0 0.04mm

CJM-7 : 81.0m

Calcopirita(Cp) y
Tetraedrita(Td) están
en el contorno de la
Pirita(Py) y la
Bornita(Bn) con la
Calcopirita intercaladas
en la solución

(nicol normal)

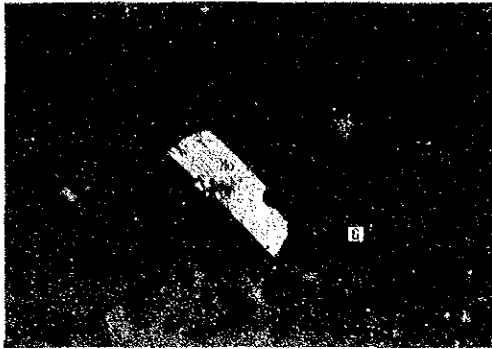


0 0.1mm

CJM-7 : 81.0m

Calcopirita(Cp) y la
Tetraedrita(Td) existen
en el contorno de Pirita
(Py)

(nicol normal)

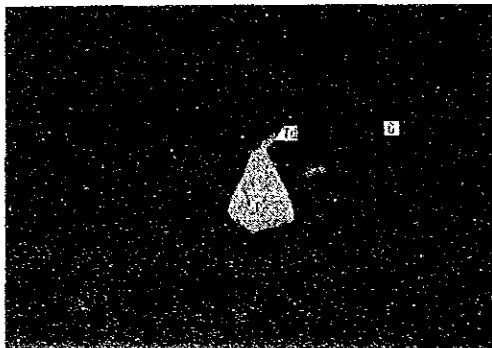


0 0.1mm

CJM-9 : 40.2m

Molibdenita(Mo)

(nicol normal)

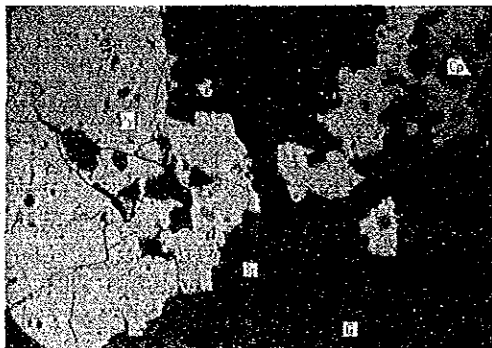


0 0.1mm

CJM-9 : 40.2m

Calcopirita(Cp) y
Tetraedrita(Td)

(nicol normal)

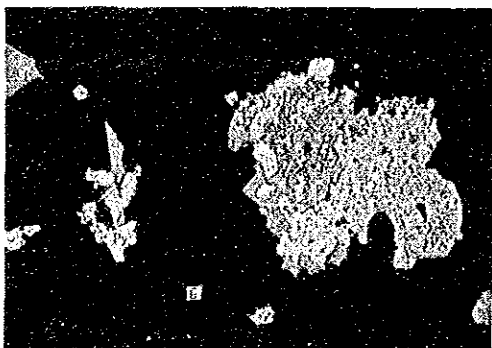


0 0.1mm

CJM-9 : 201.0m

Pirita(Py) y
Esfalerita(Sp)

(nicol normal)



0 0.2mm

CJM-9 : 201.0m

Pirita(Py) y
Calcopirita(Cp)

(nicol normal)

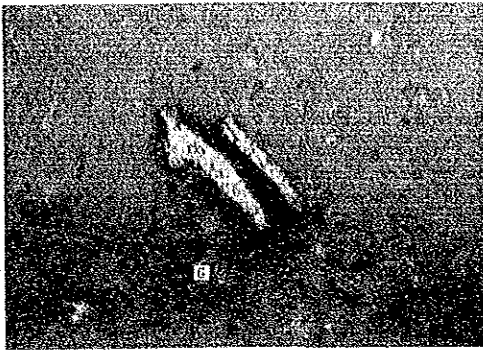


CJM-9 : 201.0m

Molibdenita(Mo)

(nicol normal)

0 0.04mm



CJM-10 : 63.6m

Molibdenita(Mo)

(nicol normal)

0 0.04mm

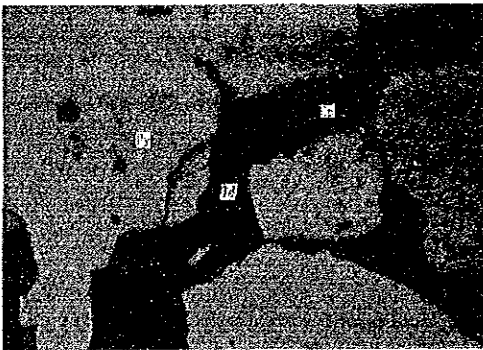


CJM-10 : 63.6m

Calcopirita(Cp) y
Esfalerita(Sp)

(nicol normal)

0 0.1mm

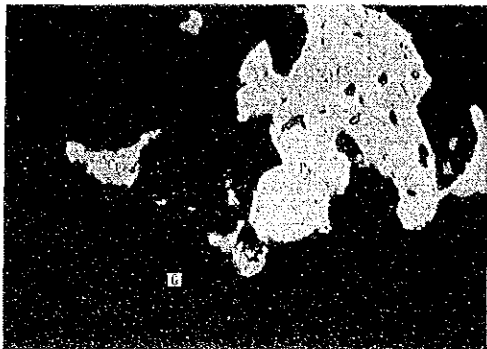


CJM-10 : 196.5m

Pirita(Py),
Calcopirita(Cp) y
Tetraedrita(Td)

(nicol normal)

0 0.04mm



CJM-10 : 196.5m

Pirita(Py) y
Calcopirita(Cp)

(nicol normal)

0 0.2mm



CJM-10 : 306.5m

Tetraedrita(Td) y
Pirita(Py)

(nicol normal)

0 0.1mm



CJM-10 : 306.5m

Molibdenita(Mo)

(nicol normal)

0 0.2mm

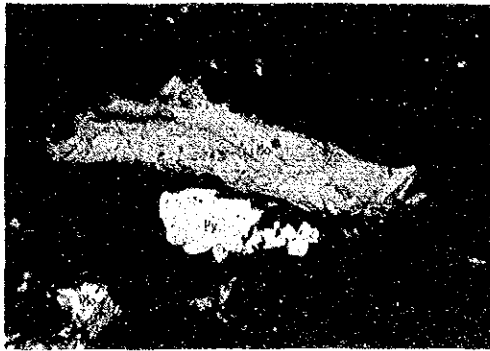


CJM-10 : 306.5m

Cristal anisotropico
fuerte de Molibdenita

(nicos cruzados)

0 0.2mm



CJM-10 : 306.5m

Molibdenita(Mo) y
Pirita(Py)

(nicol normal)

0 0.2mm



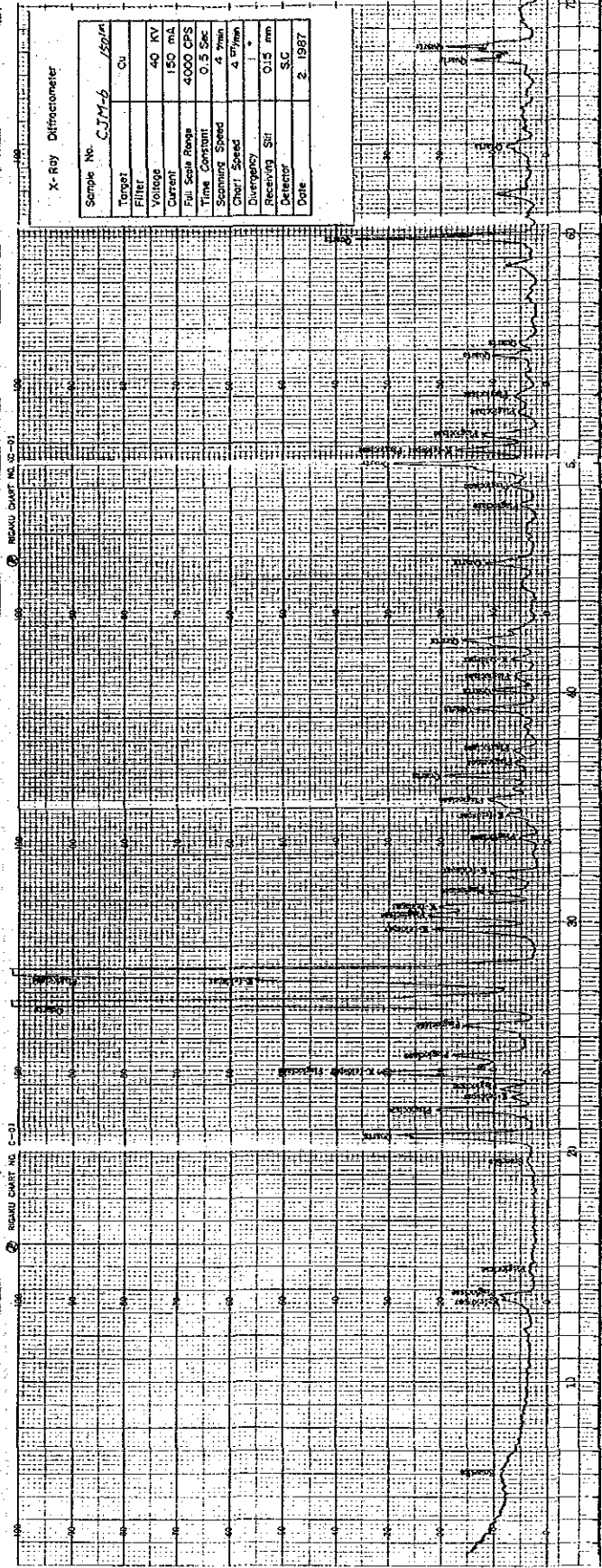
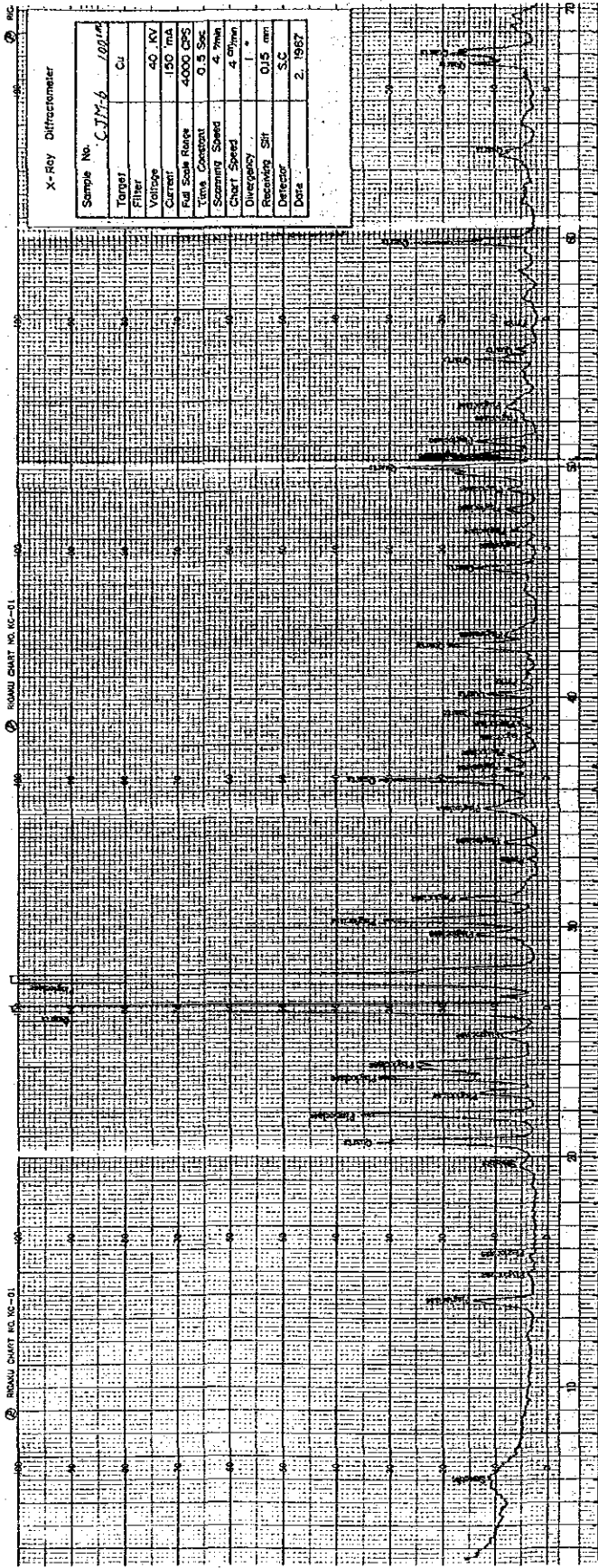
CJM-10 : 306.5m

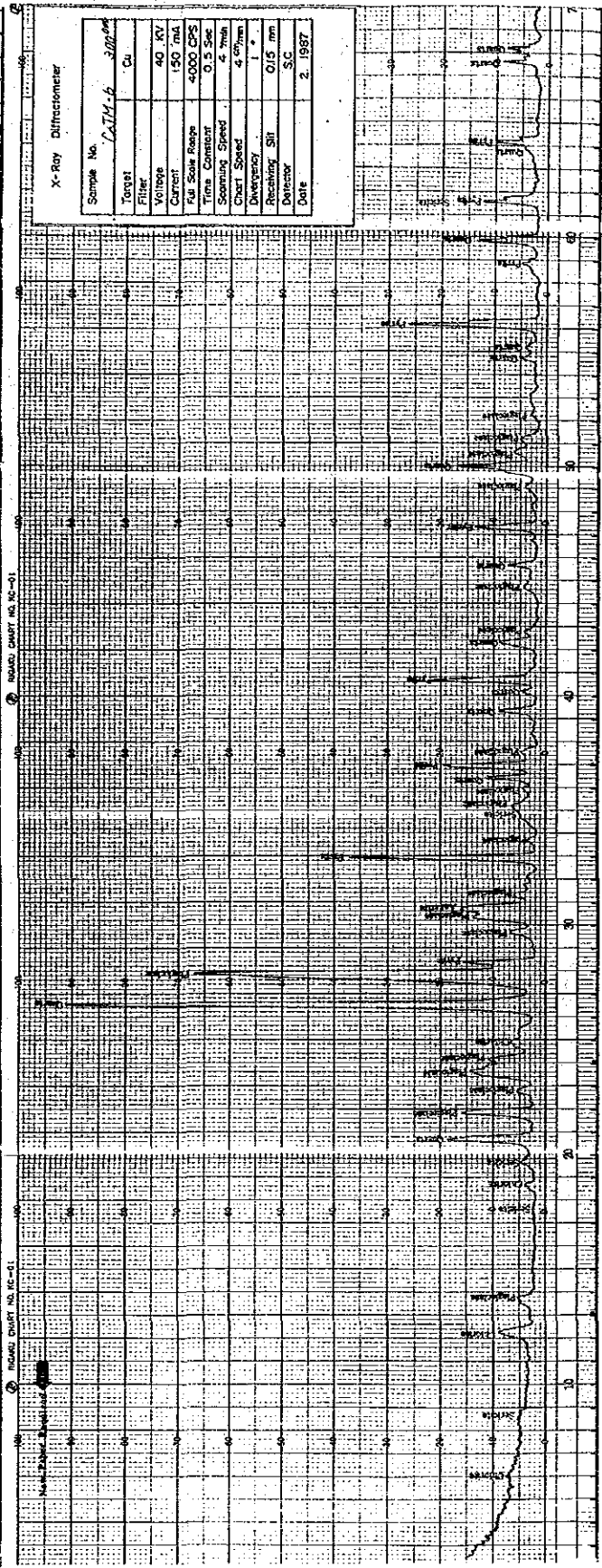
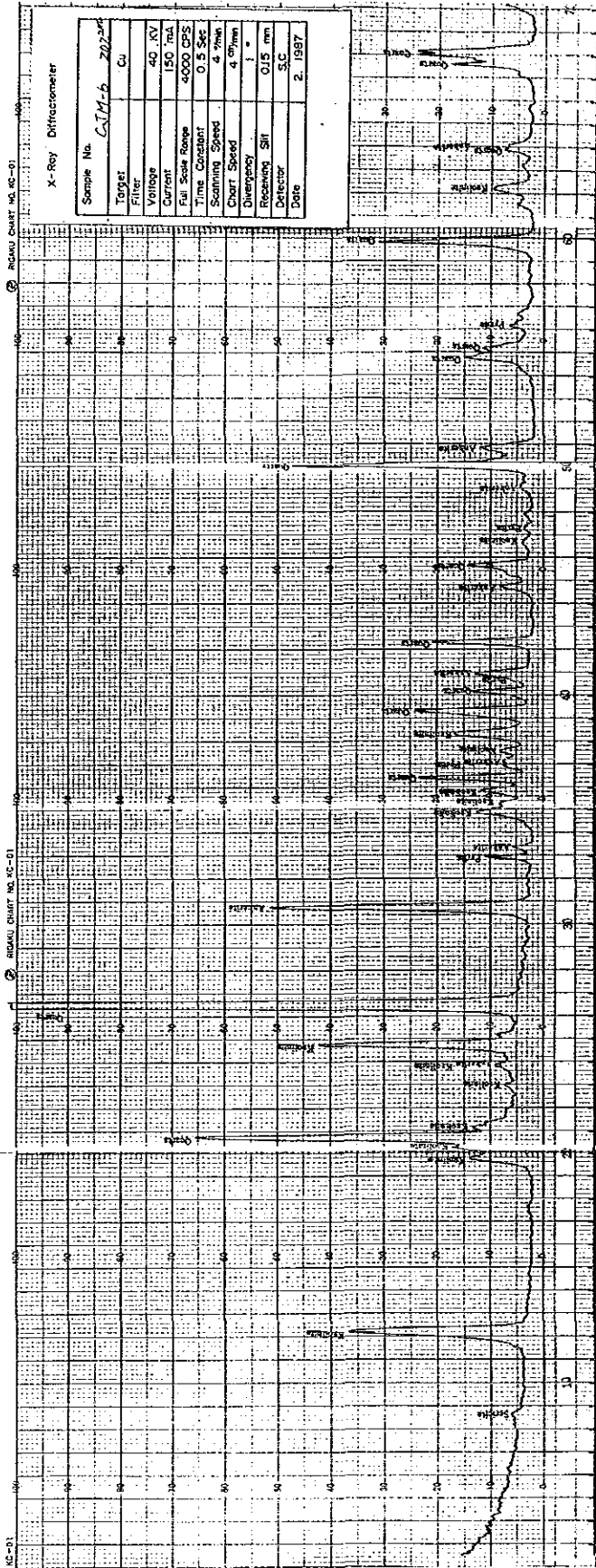
Cristal anisotropico
fuerte de Molibdenita

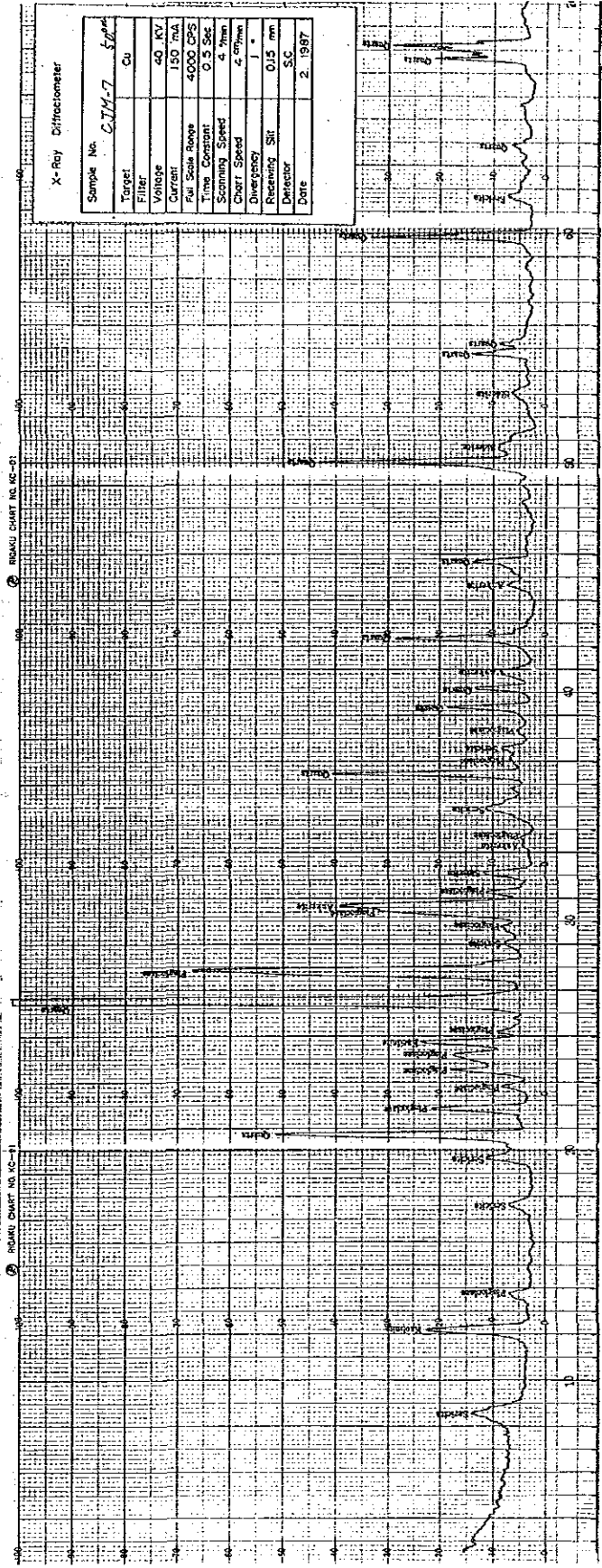
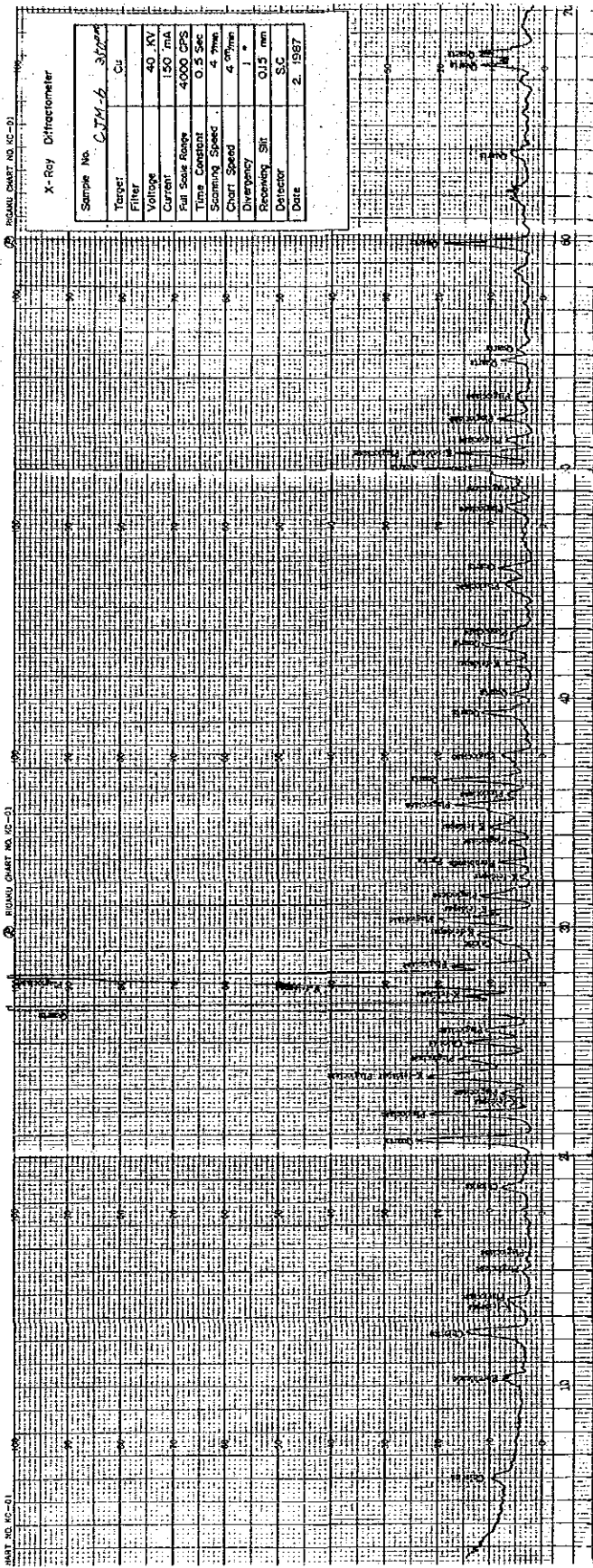
(nicoses cruzados)

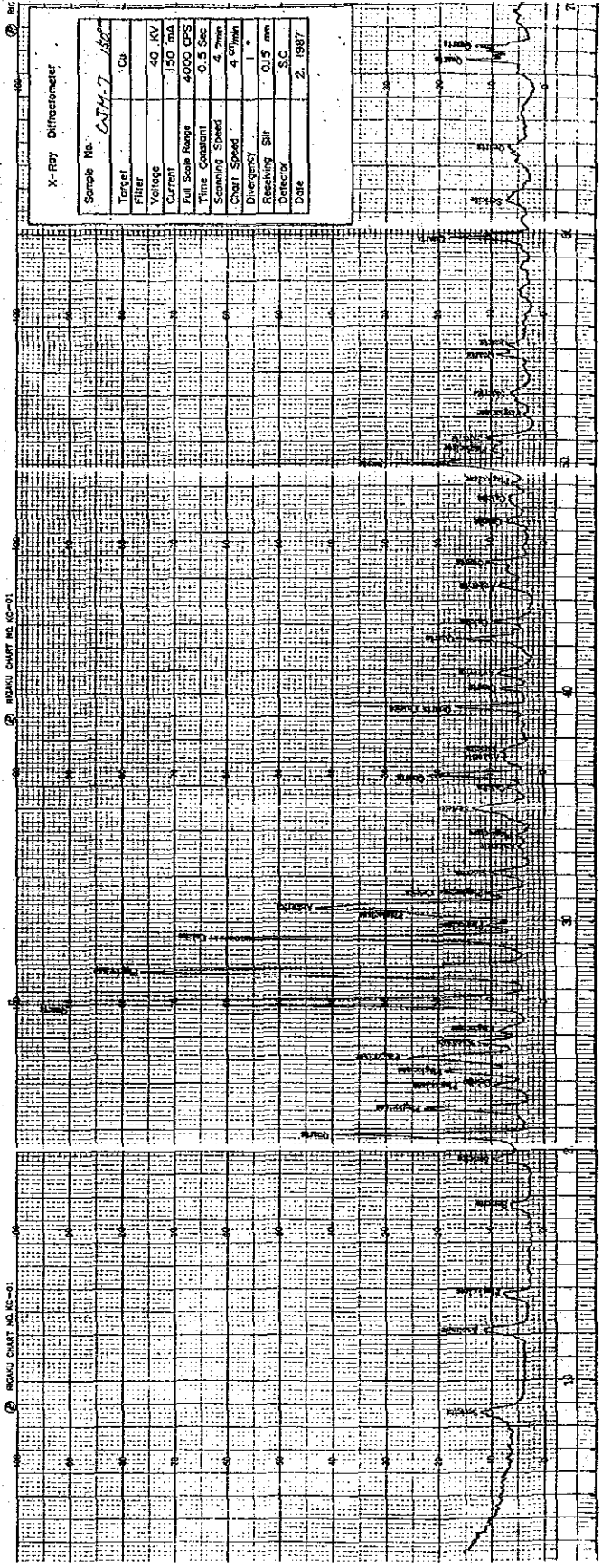
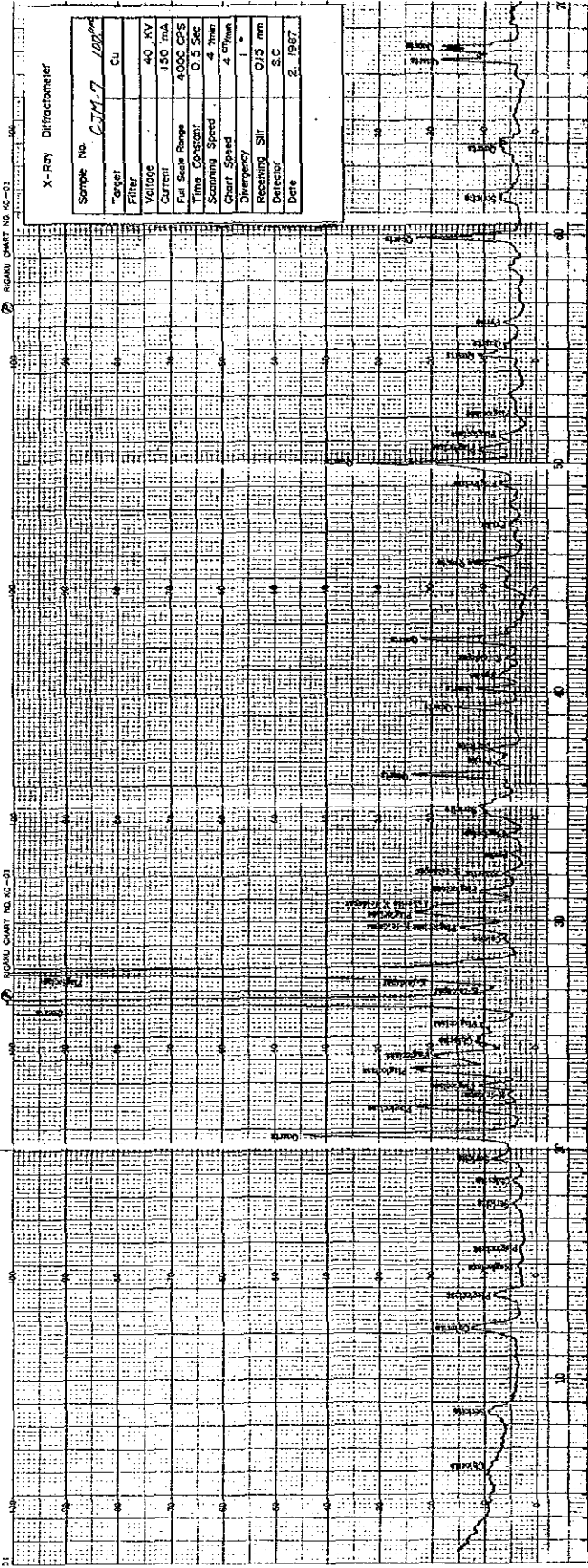
0 0.2mm

A. 3-26 X線回折チャート



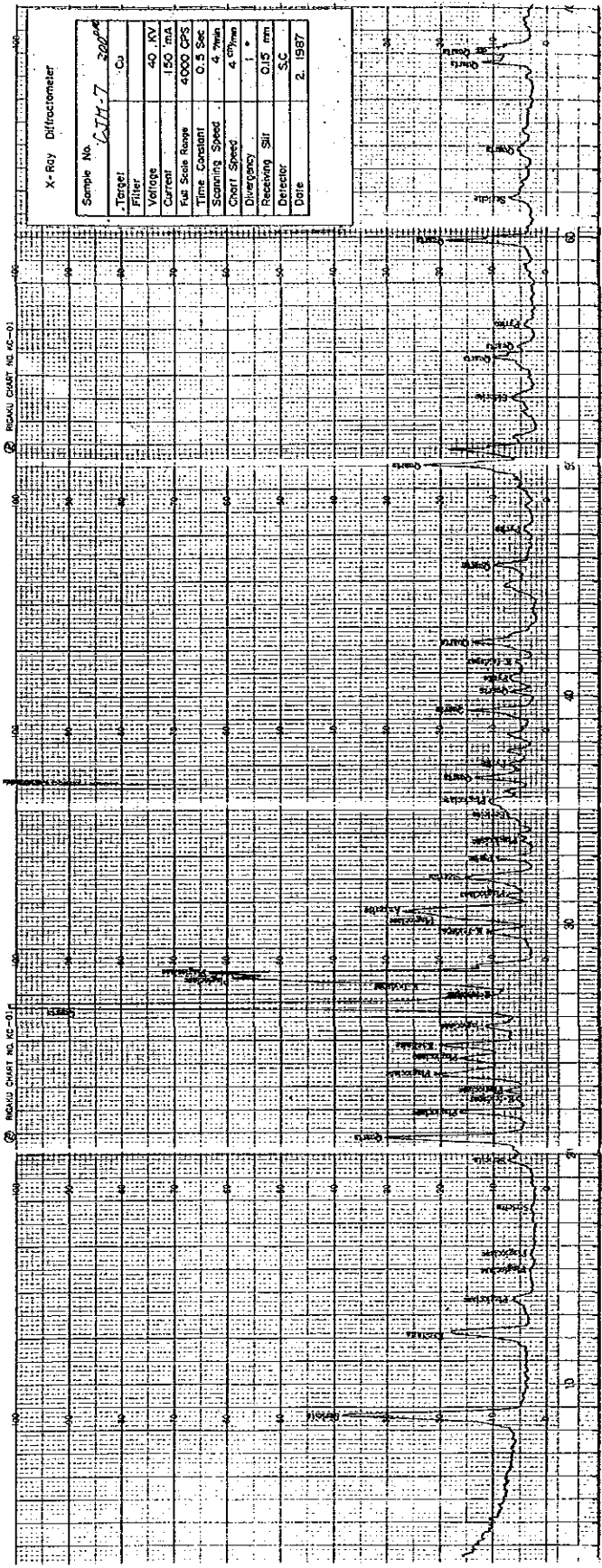






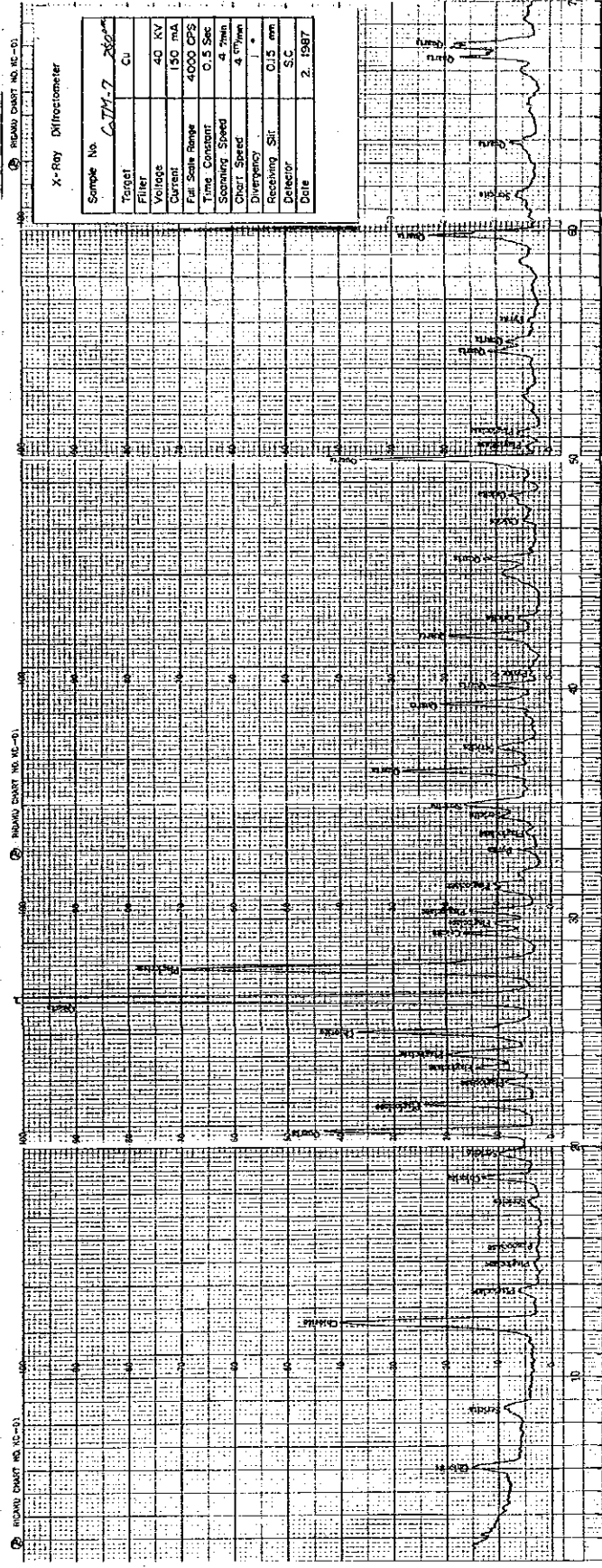
X-Ray Diffractometer

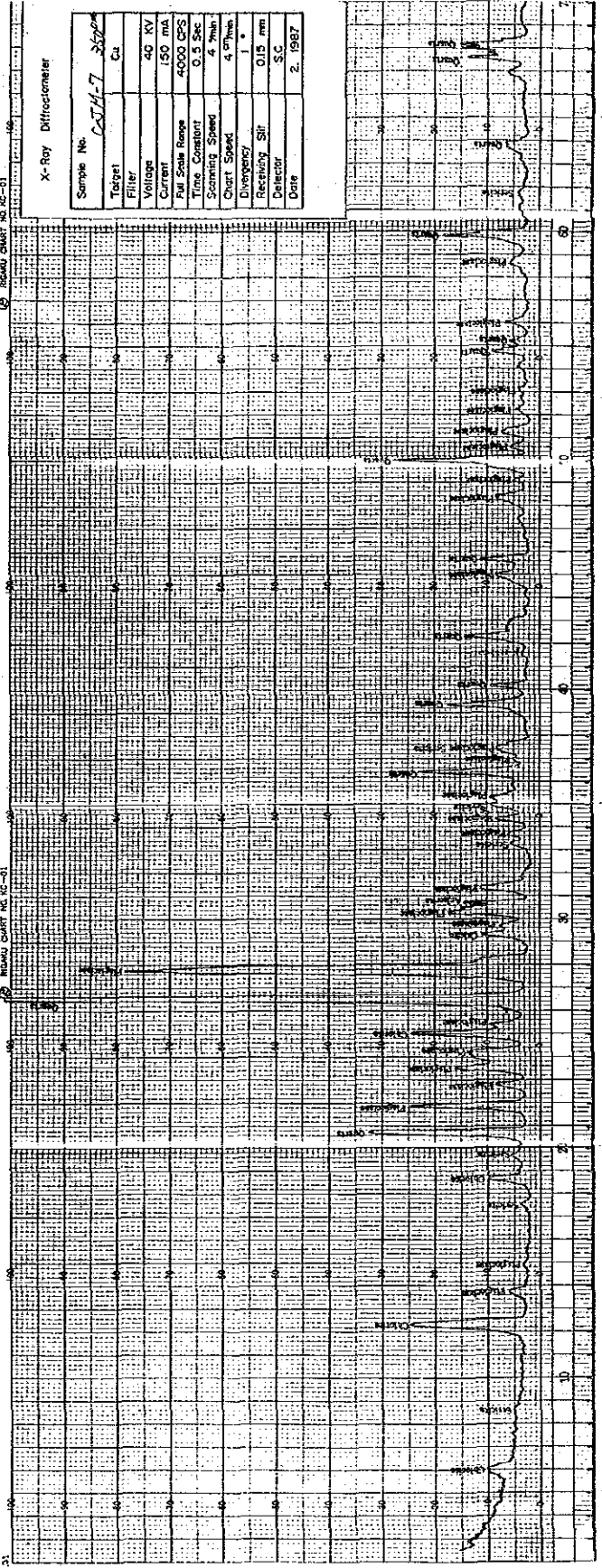
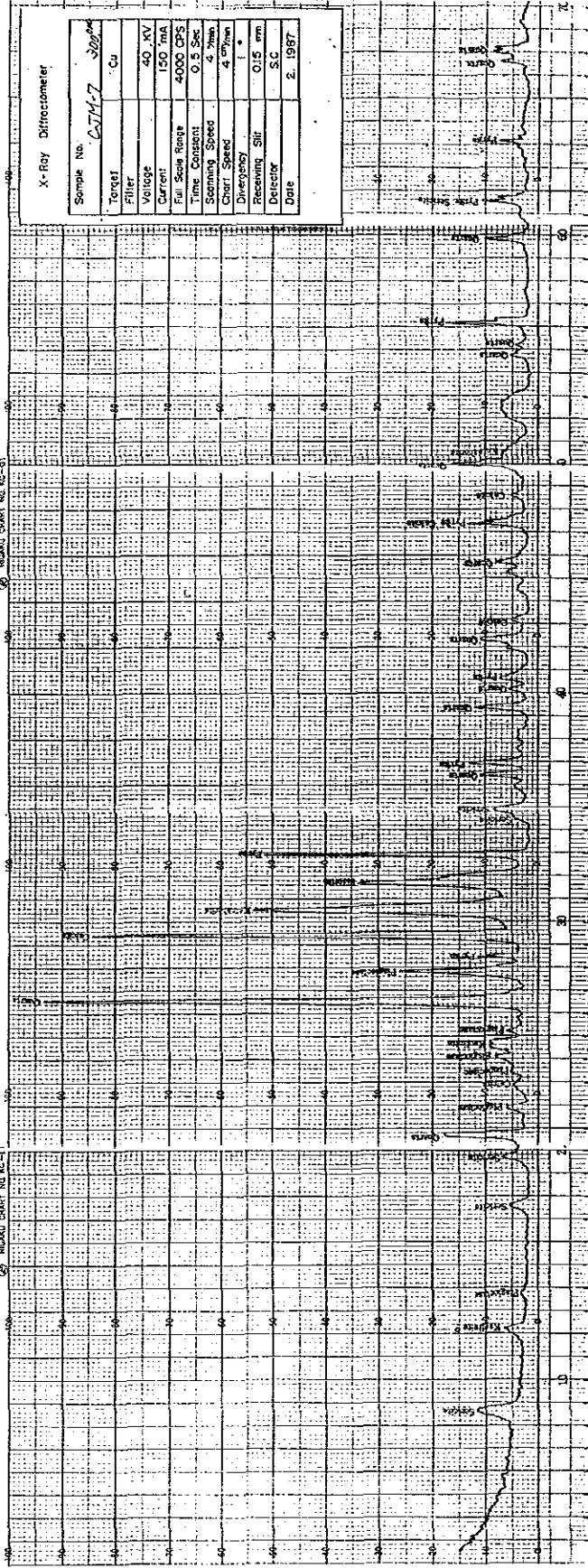
Sample No.	CAH-7
Target	Cu
Filter	
Voltage	40 KV
Current	150 ma
Full Scale Range	4000 CPS
Time Constant	0.5 Sec
Scanning Speed	4 $^{\circ}$ /min
Chart Speed	4 $^{\circ}$ /min
Divergency	1 $^{\circ}$
Receiving Slit	0.15 mm
Detector	S.C.
Date	2. 1987

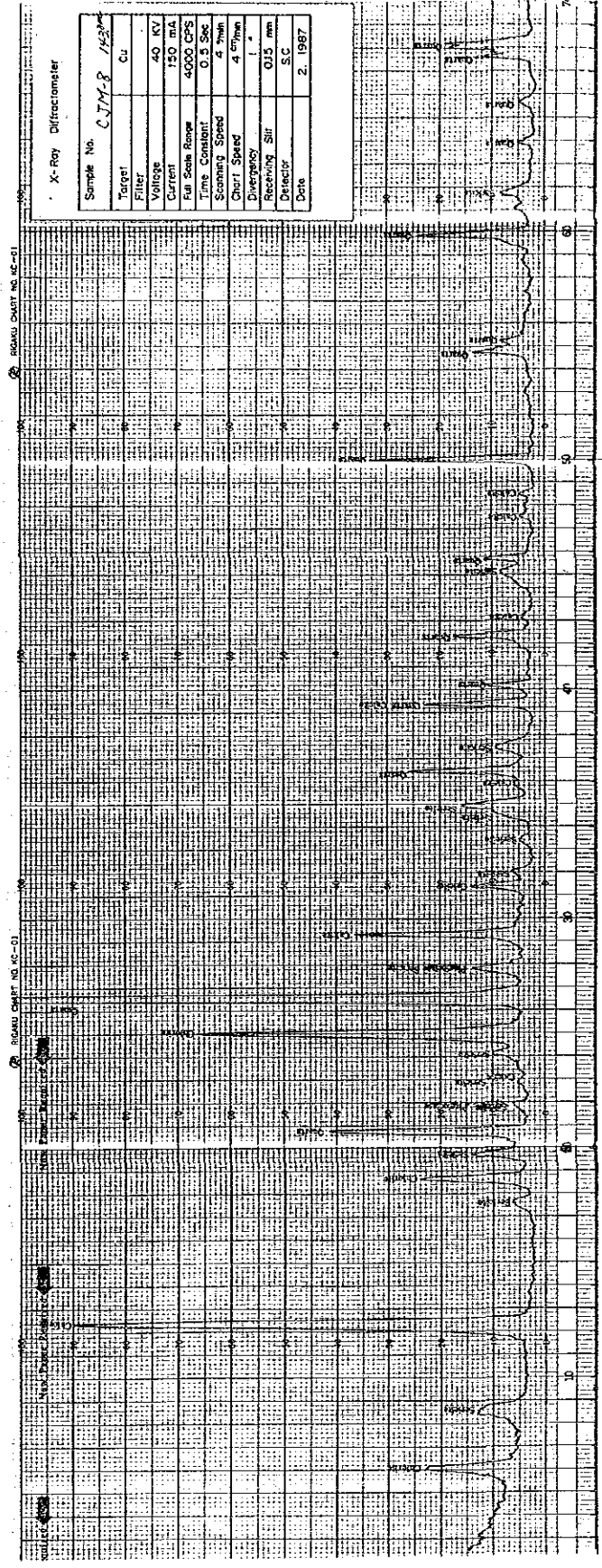
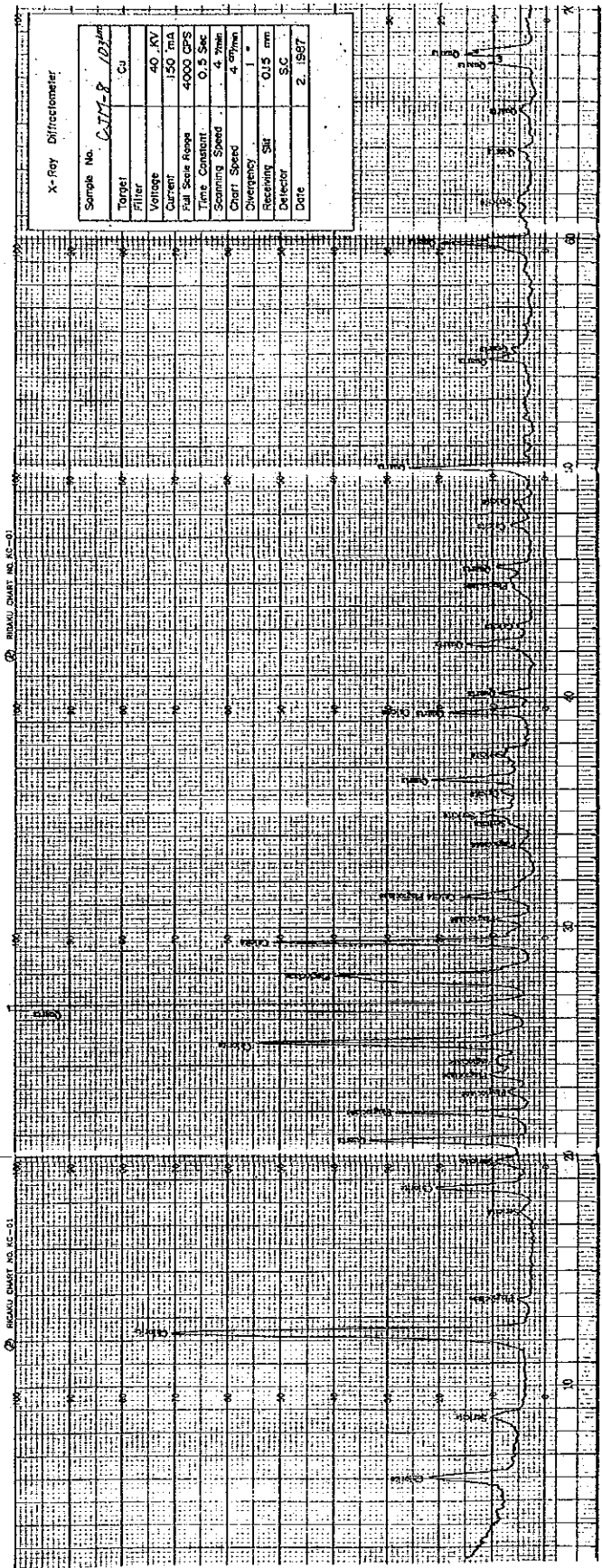


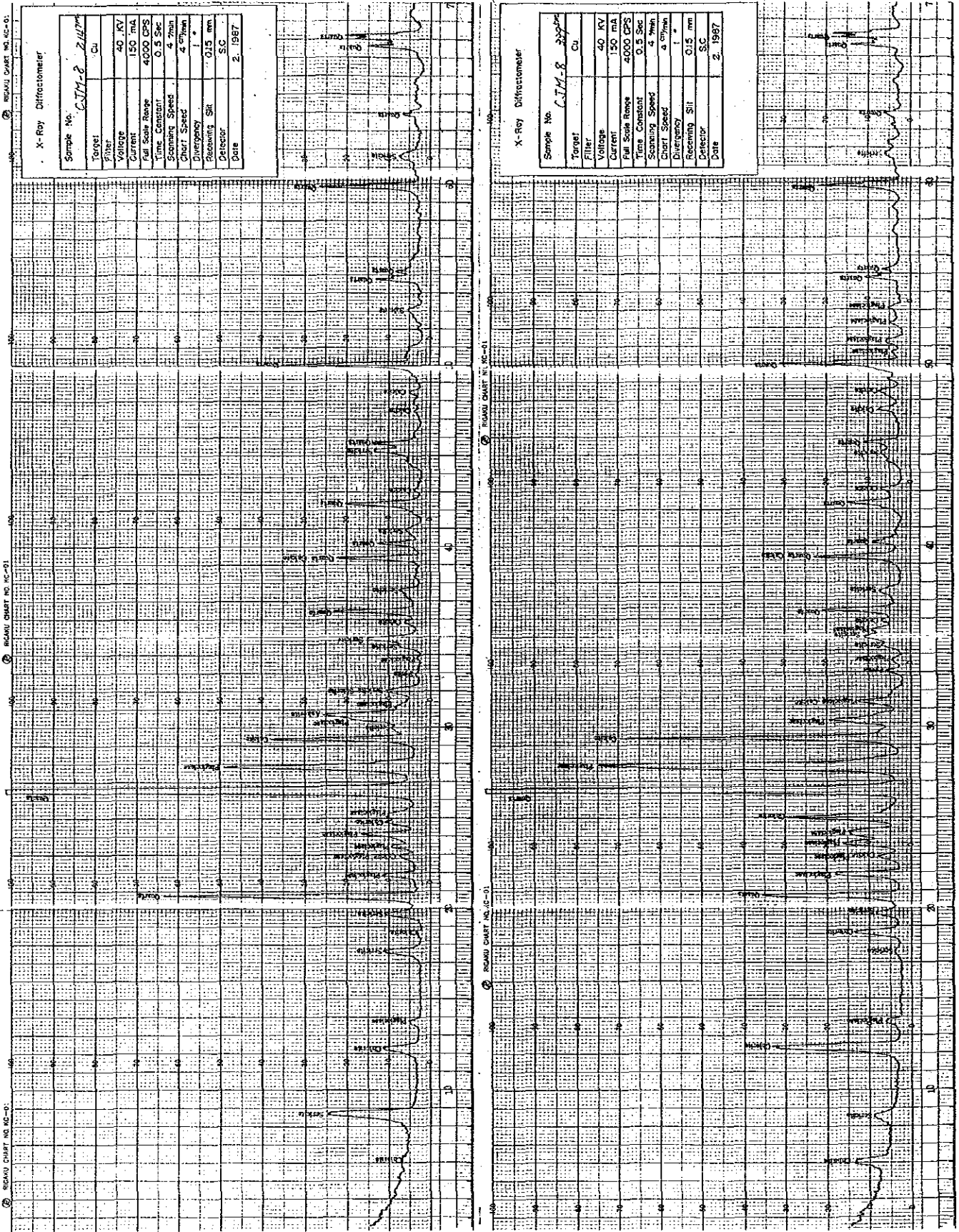
X-Ray Diffractometer

Sample No.	CAH-7
Target	Cu
Filter	
Voltage	40 KV
Current	150 ma
Full Scale Range	4000 CPS
Time Constant	0.5 Sec
Scanning Speed	4 $^{\circ}$ /min
Chart Speed	4 $^{\circ}$ /min
Divergency	1 $^{\circ}$
Receiving Slit	0.15 mm
Detector	S.C.
Date	2. 1987







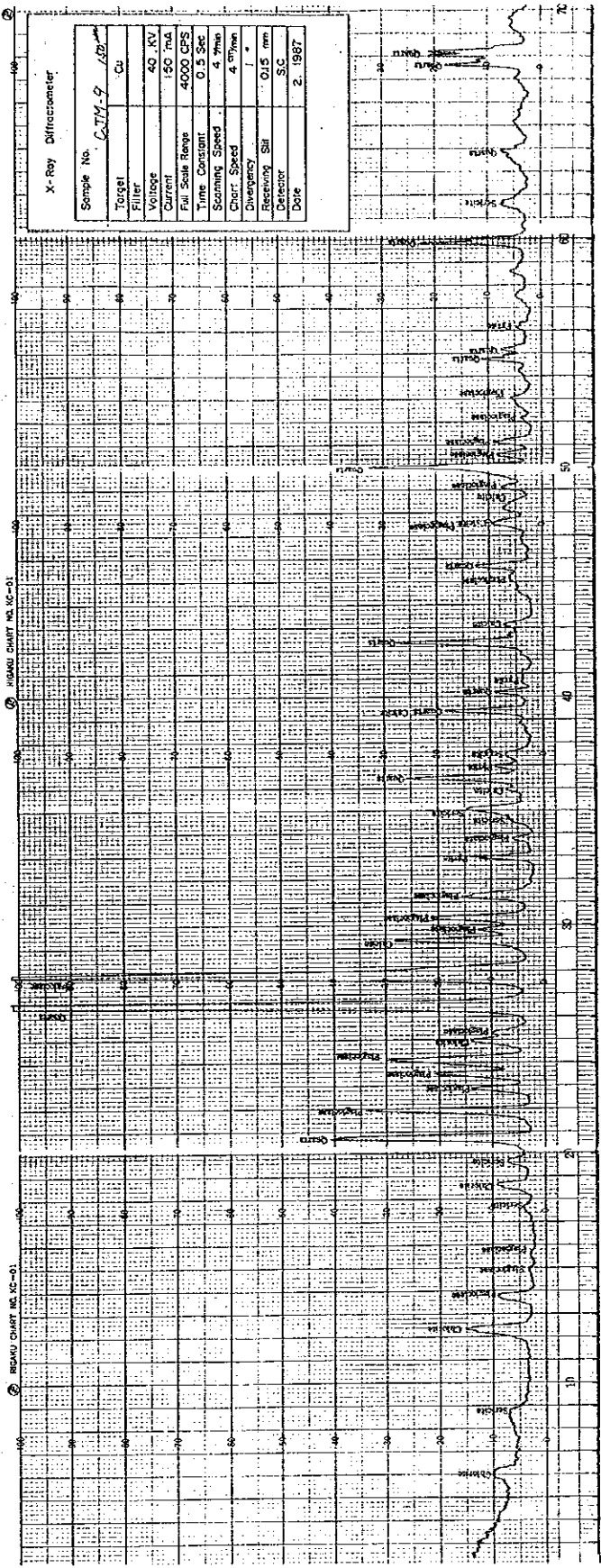
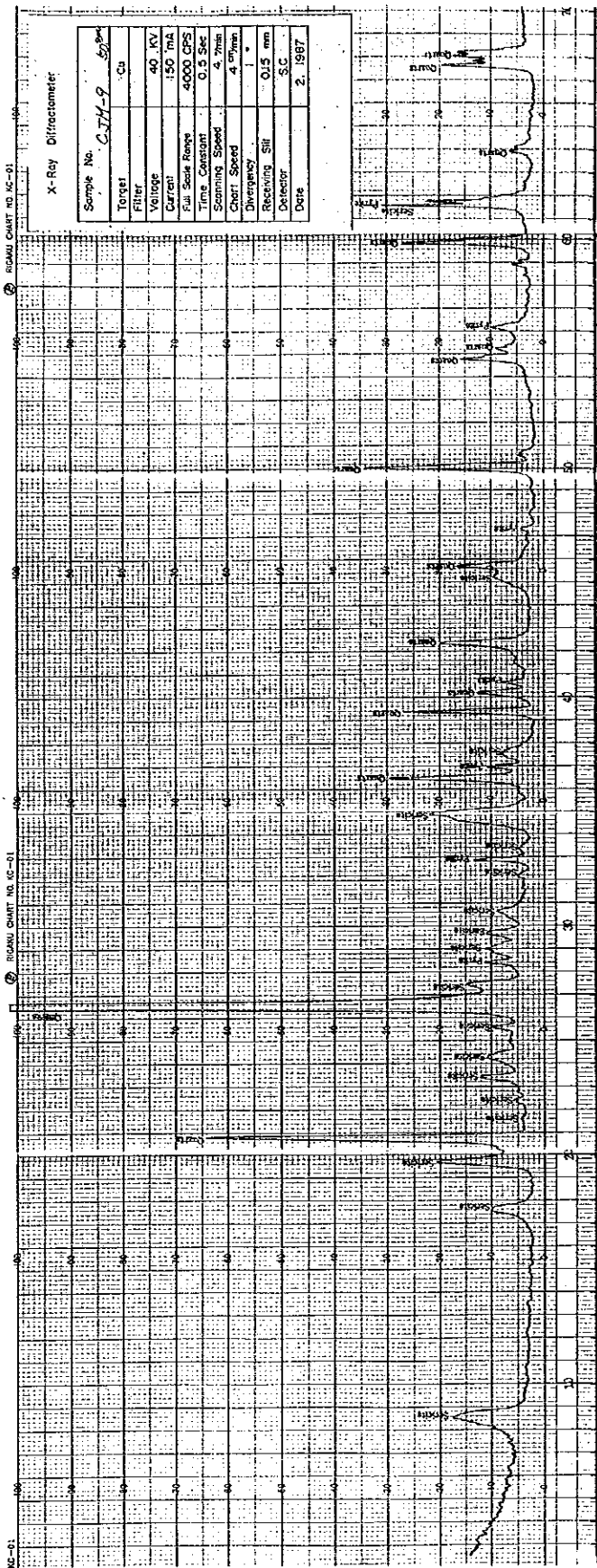


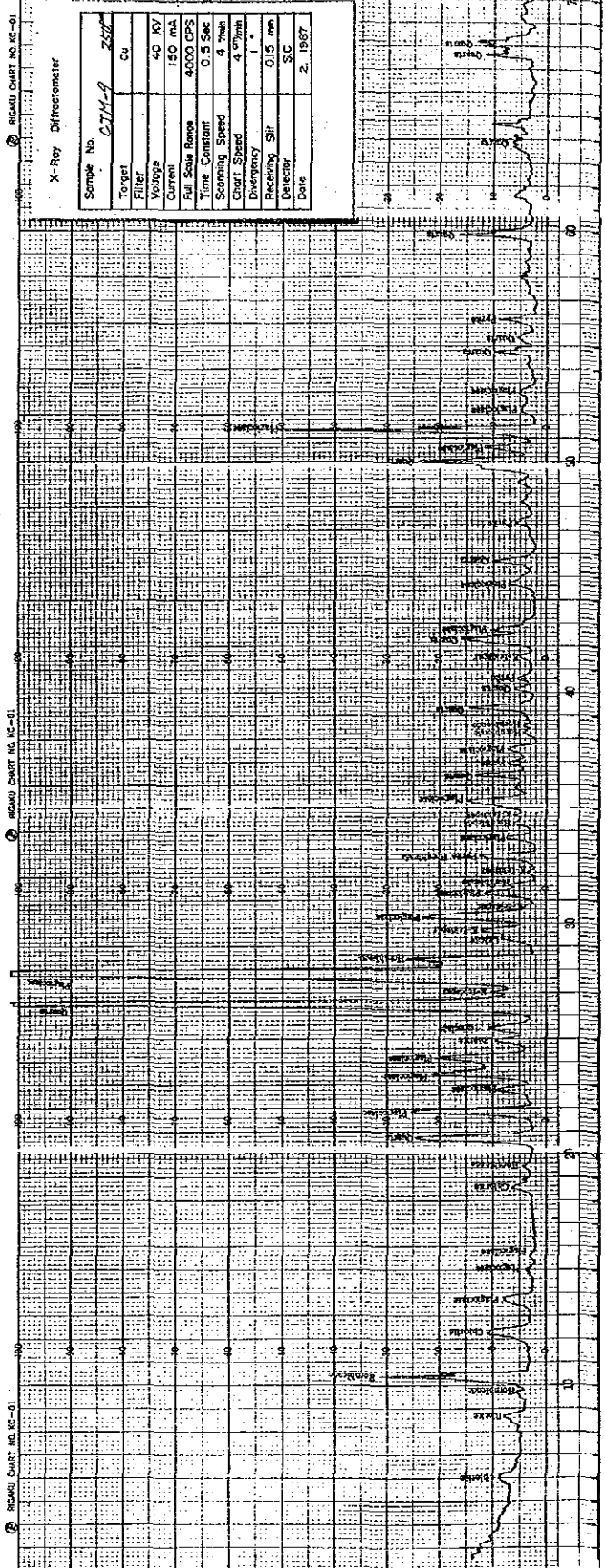
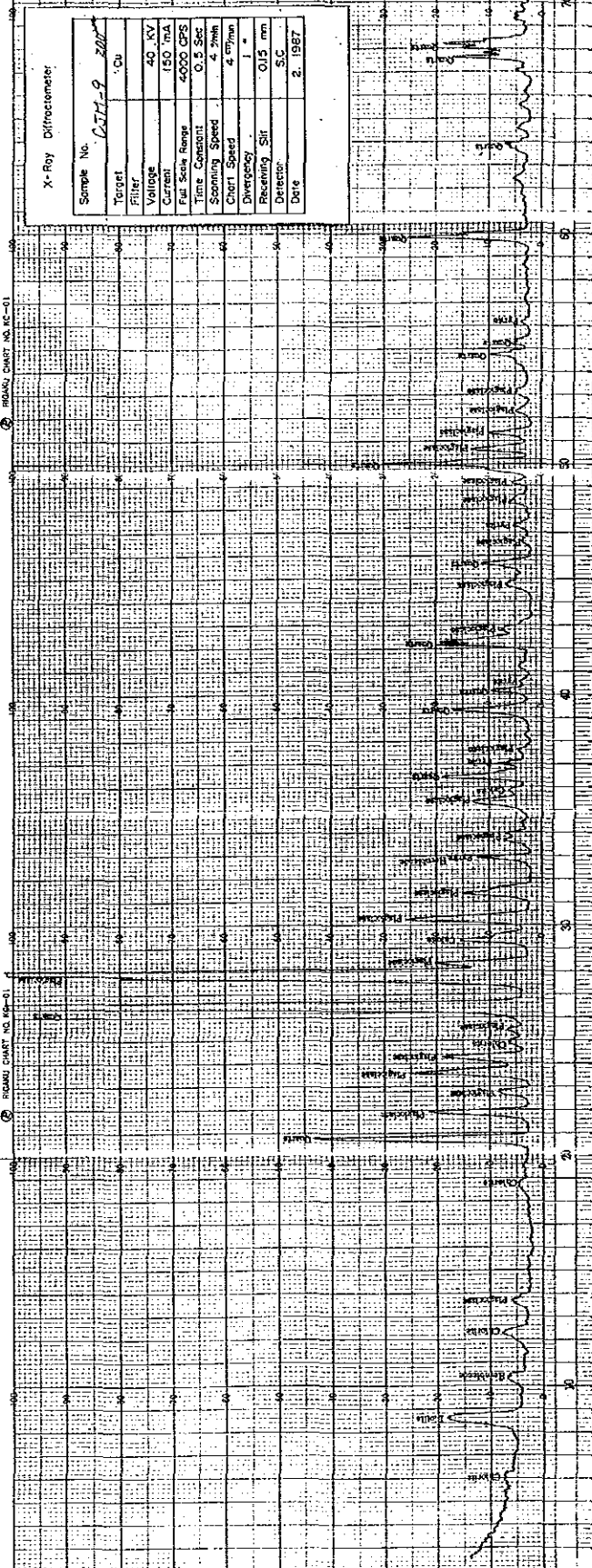
X-Ray Diffractometer

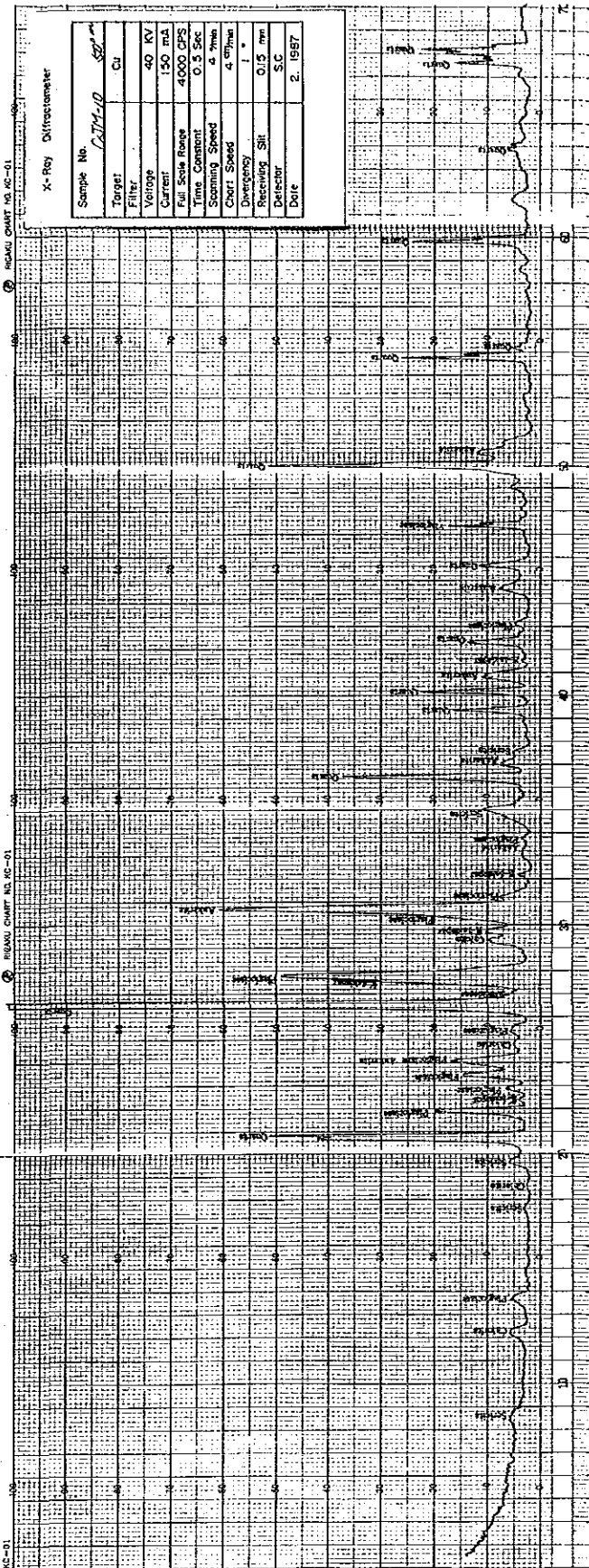
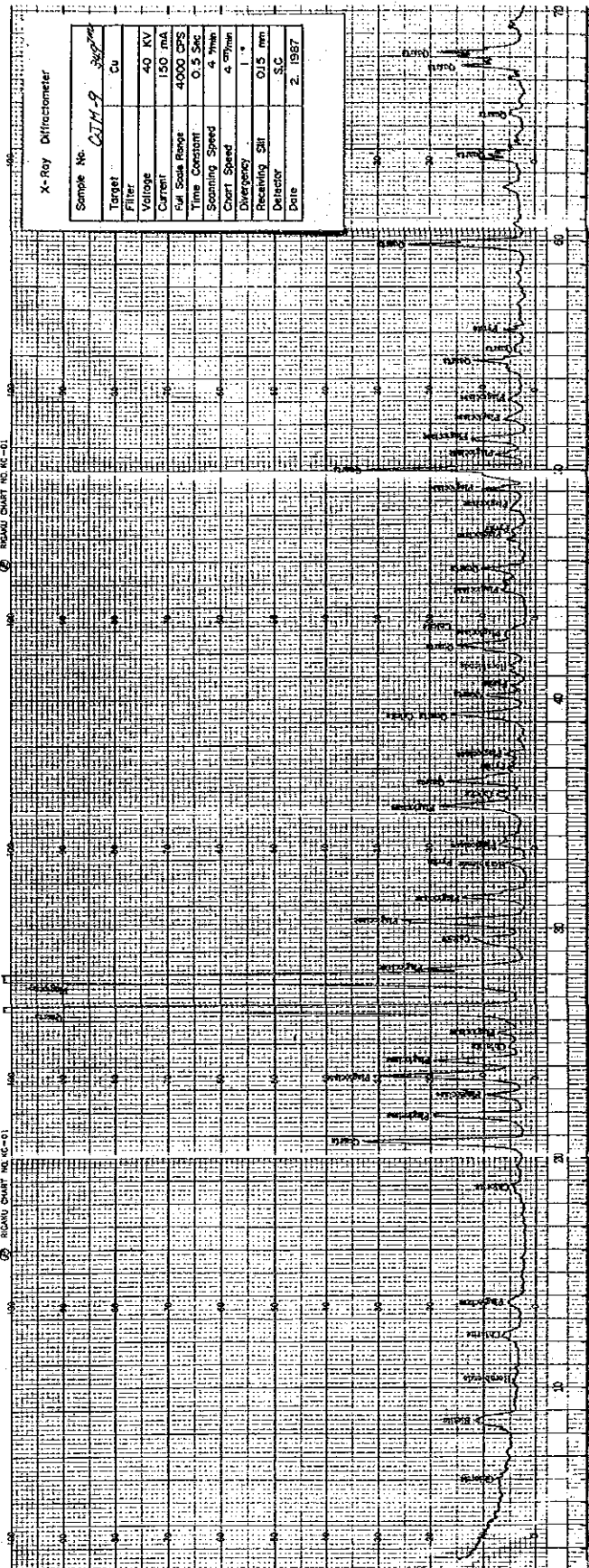
Sample No.	C.T.M.-8
Target	Cu
Filter	
Voltage	40 KV
Current	150 mA
Full Scale Range	4000 CPS
Time Constant	0.5 Sec
Scanning Speed	4 $\frac{\text{min}}{\text{min}}$
Chart Speed	1 $\frac{\text{min}}{\text{min}}$
Divergency	1 $\frac{\text{min}}{\text{min}}$
Revolving Slit	0.15 mm
Detector	S.C.
Date	2, 1967

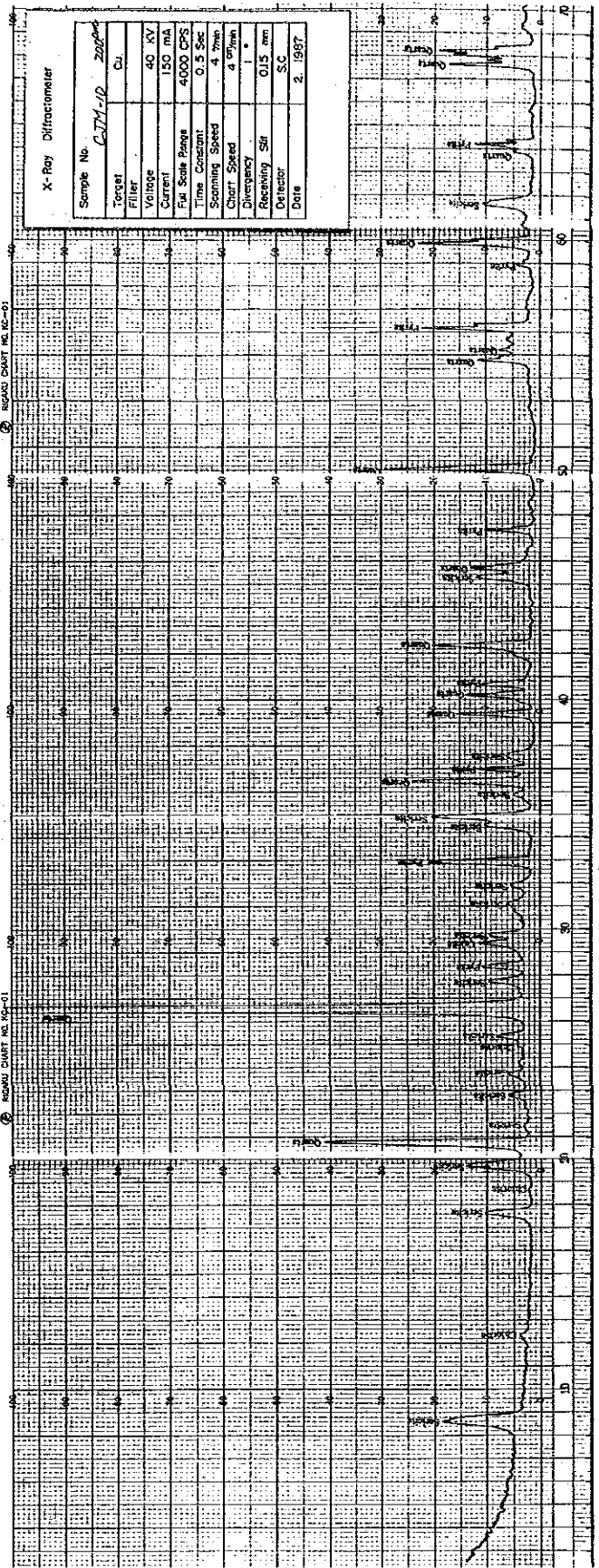
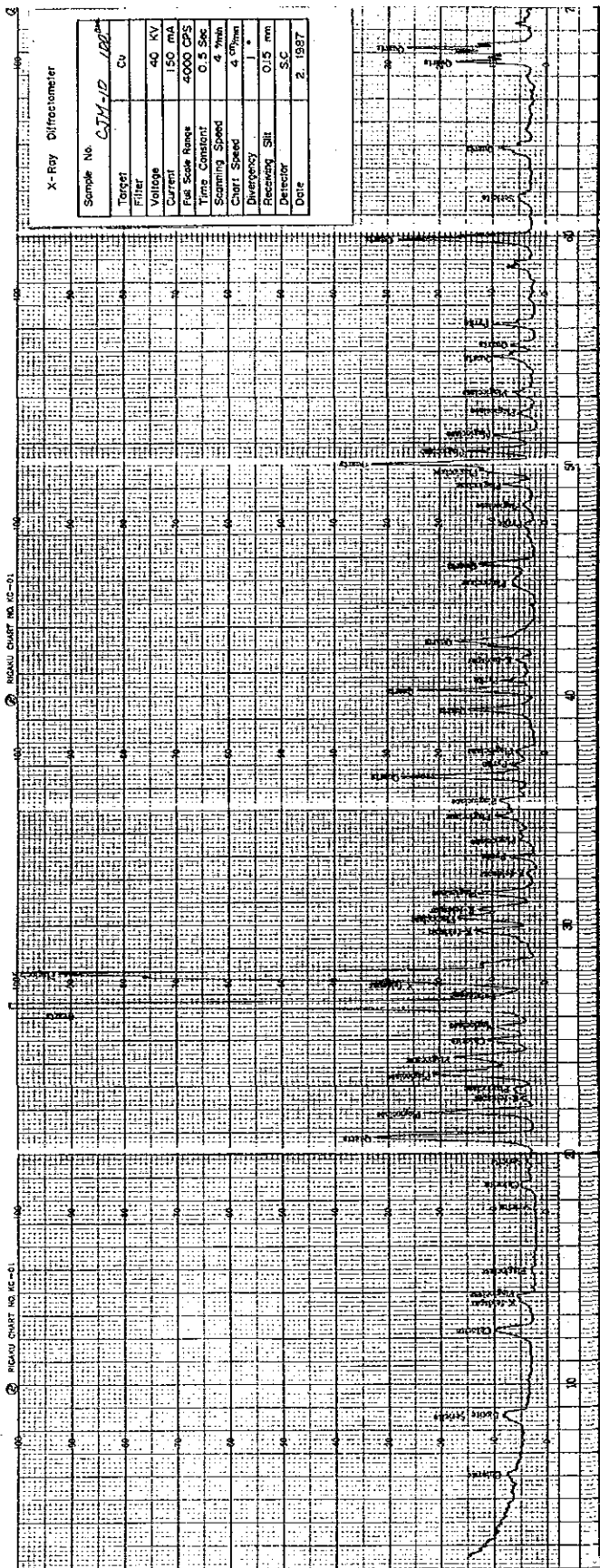
X-Ray Diffractometer

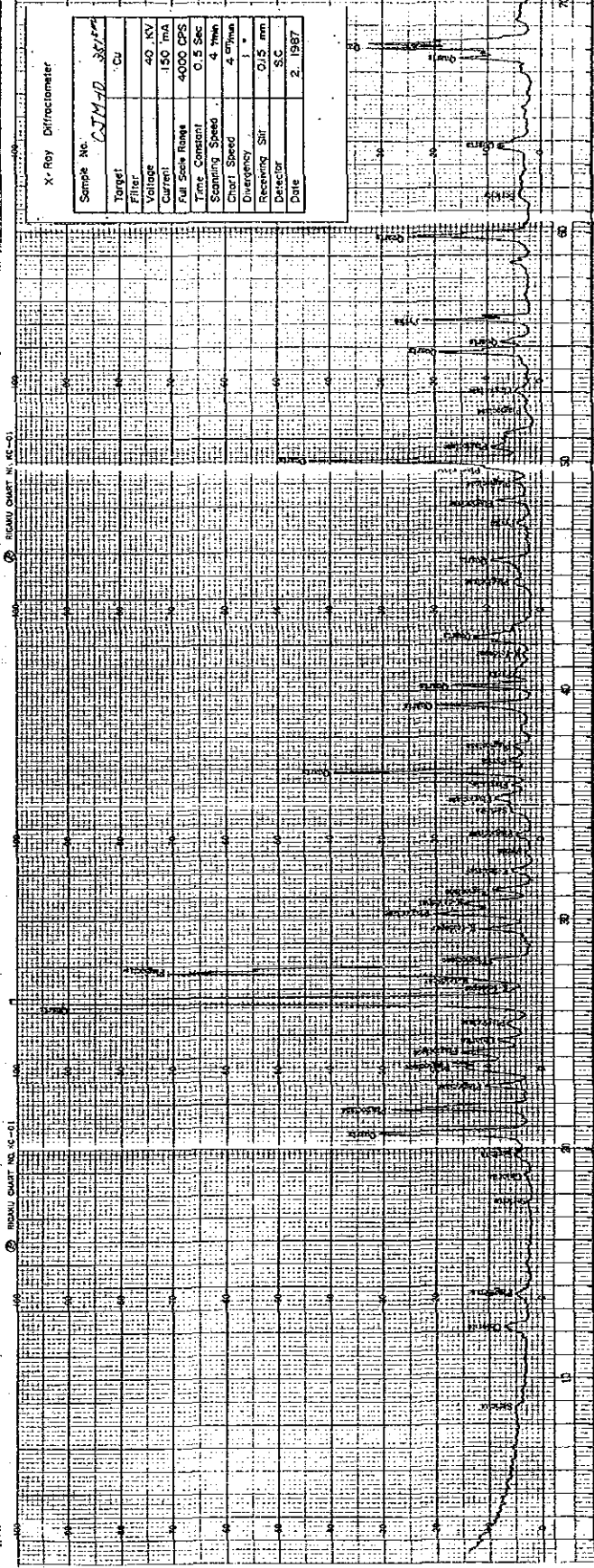
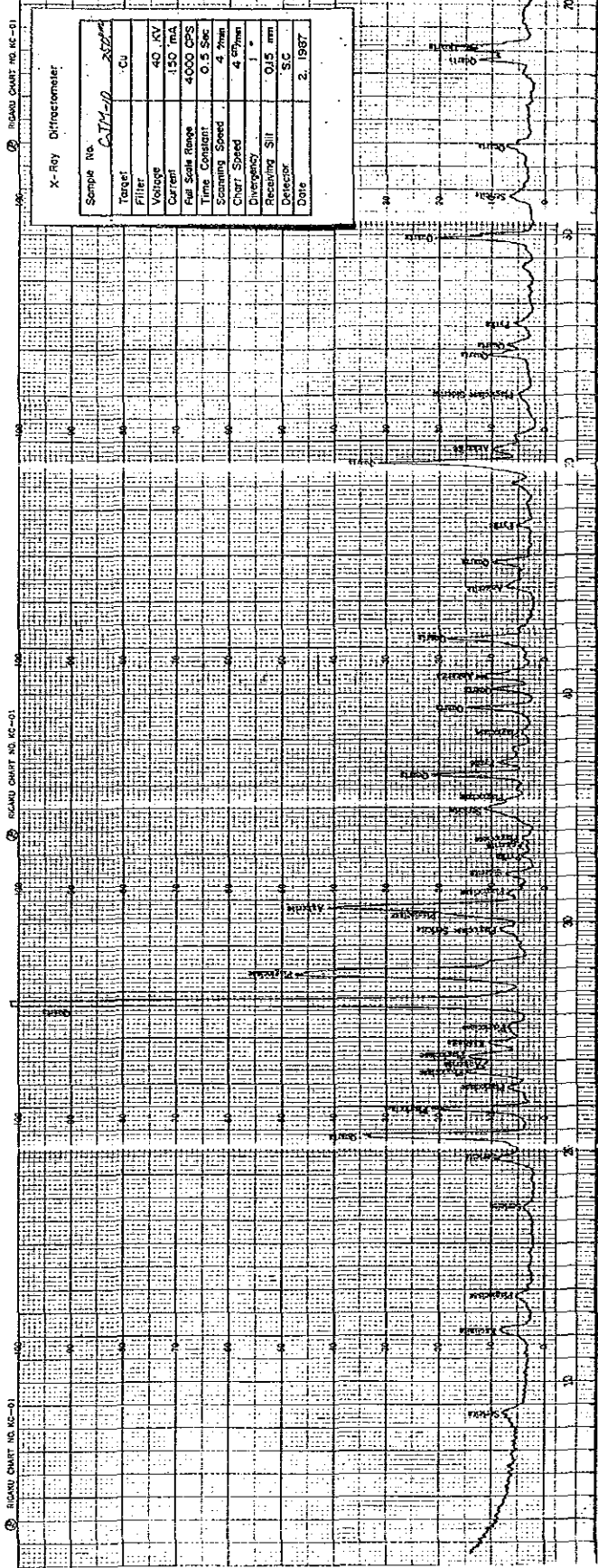
Sample No.	C.T.M.-8
Target	Cu
Filter	
Voltage	40 KV
Current	150 mA
Full Scale Range	4000 CPS
Time Constant	0.5 Sec
Scanning Speed	4 $\frac{\text{min}}{\text{min}}$
Chart Speed	1 $\frac{\text{min}}{\text{min}}$
Divergency	1 $\frac{\text{min}}{\text{min}}$
Revolving Slit	0.15 mm
Detector	S.C.
Date	2, 1967

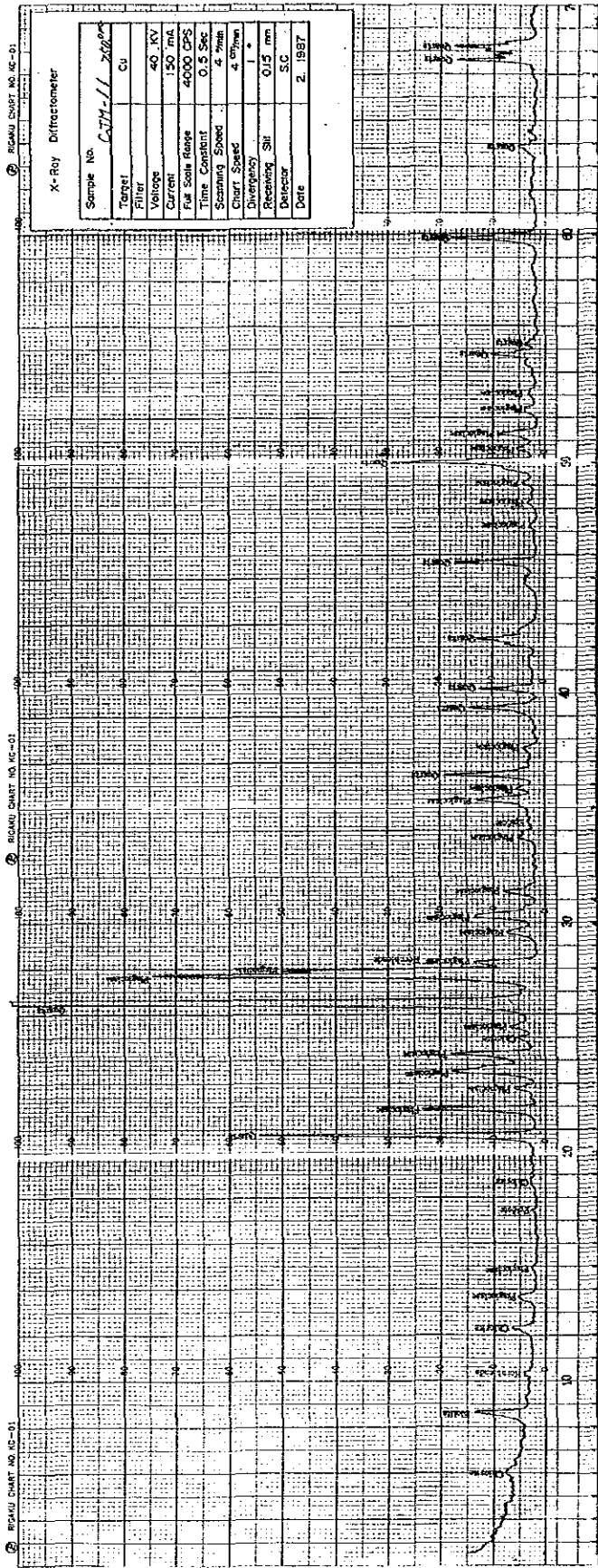












SECRET