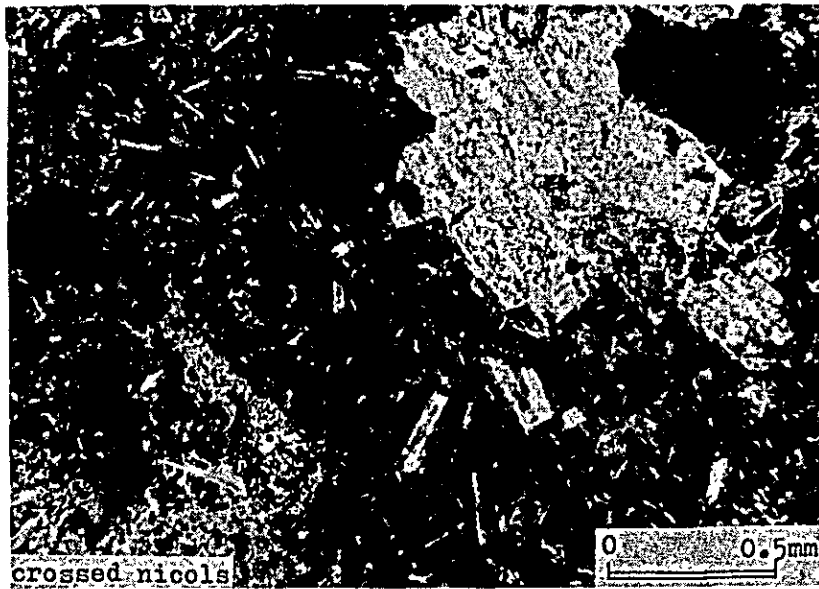
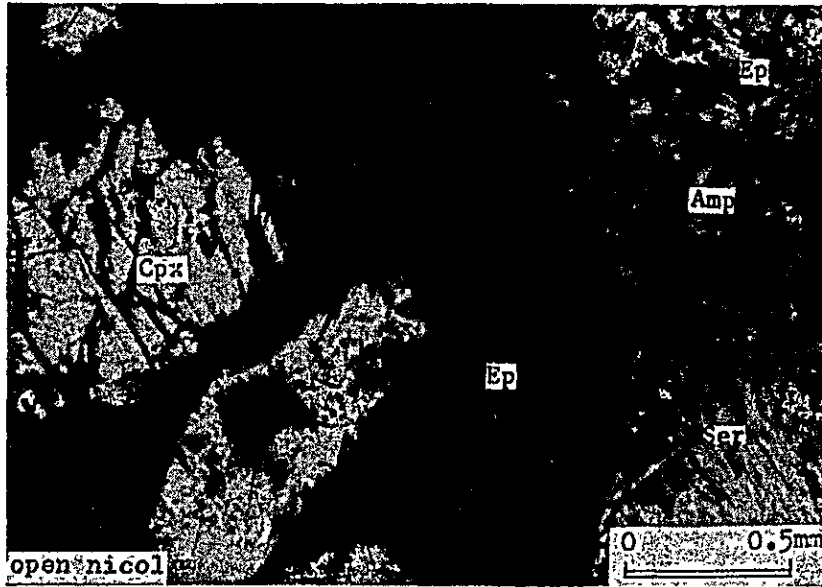


Sample No. D-7080

Rock type:

Altered andesite

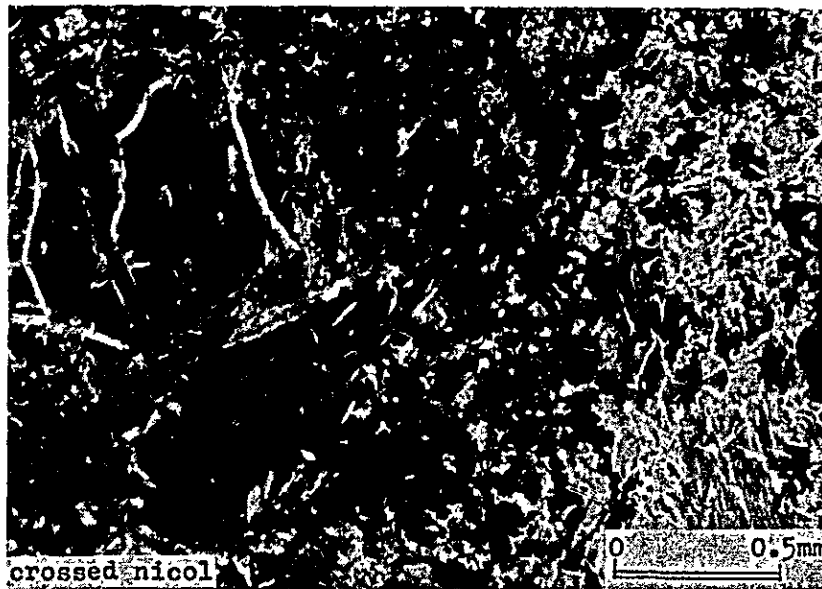


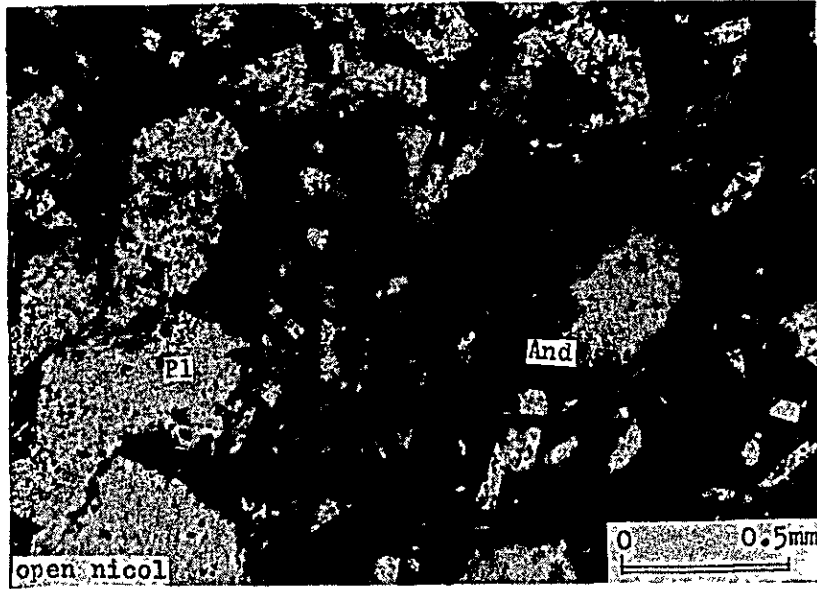


Sample No. D-7126

Rock type:

Agglomerate





Sample No. D-7160

Rock type:

Andesitic tuff breccia



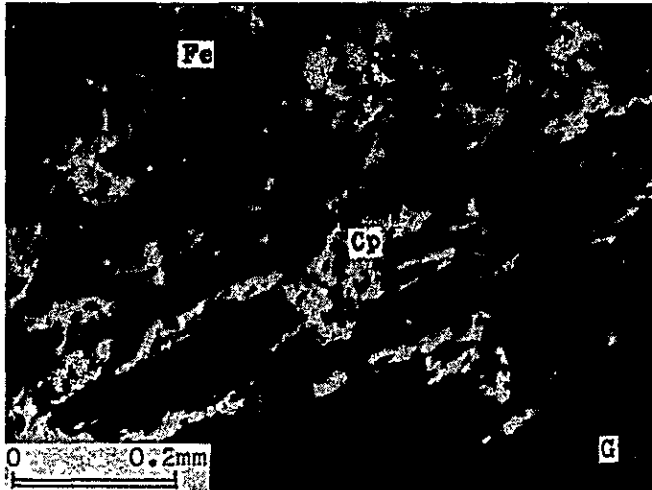
A. II-18-2 Polished Section

Sample No.	Rock Type
D1016.7	Copper ore
D3080.3	Copper, gold ore
D5087	Copper, gold ore
D6073	Copper, lead, zinc ore
D6083	Copper, zinc, lead ore
D6086(A)	Zinc ore
D6086(C)	Copper, zinc ore
D6086(E)	Copper ore
D7144(A)	Gold ore
D7144(D)	Gold ore

D1016.7
 ↑
 ↑ Depth (m)
 ↓ Bore hole No.
 ↓ Drilled core

Abbreviations

Py : Pyrite
 Asp : Arsenopyrite
 El : Electrum
 Cp : Chalcopyrite
 Sp : Sphalerite
 Gn : Galena
 Fe : Iron oxide
 Bl : Boulangerite
 G : Gangue mineral



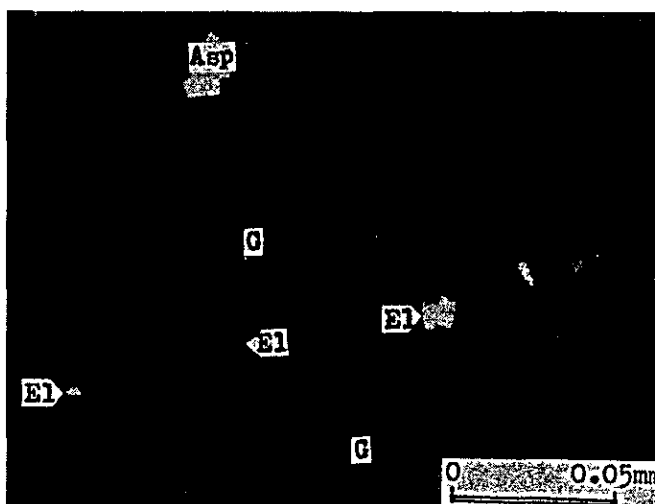
Sample No. D1016.7

Rock type:
Copper ore

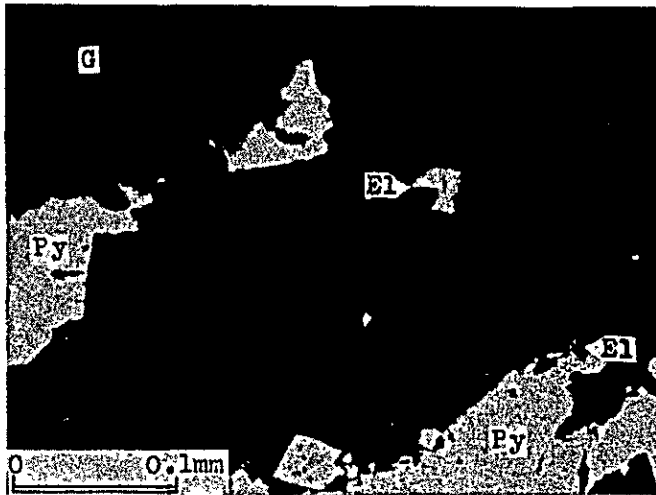


Sample No. D3080.3

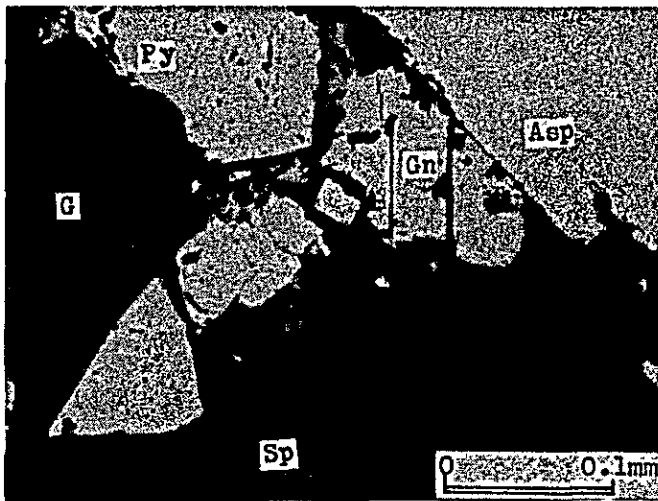
Rock type:
Copper, gold ore



enlarged the above



Sample No. D5087
Rock type:
Copper, gold ore



Sample No. D6073
Rock type:
Copper, lead, zinc ore

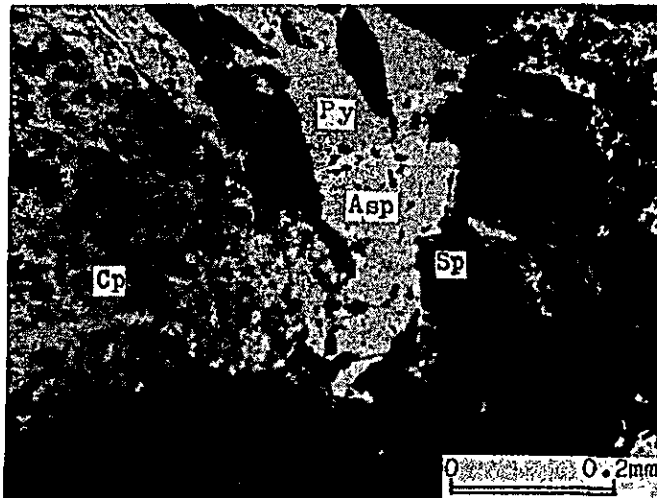


Sample No. D6083
Rock type:
Copper, zinc, lead ore



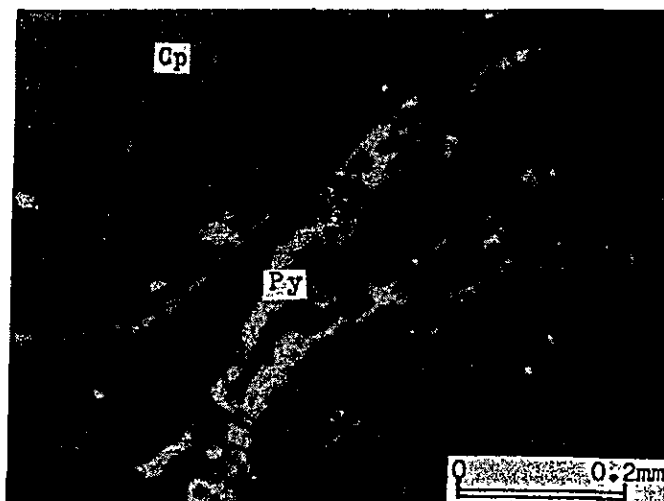
Sample No. D6086(A)

Rock type:
Zinc ore



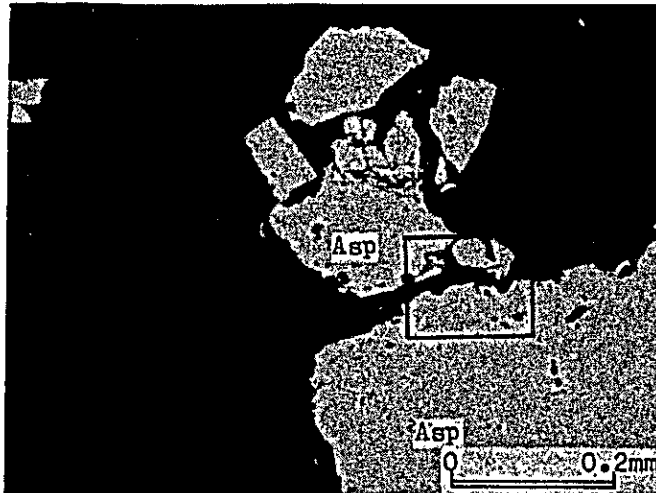
Sample No. 6086(C)

Rock type:
Copper, zinc ore



Sample No. D6086(E)

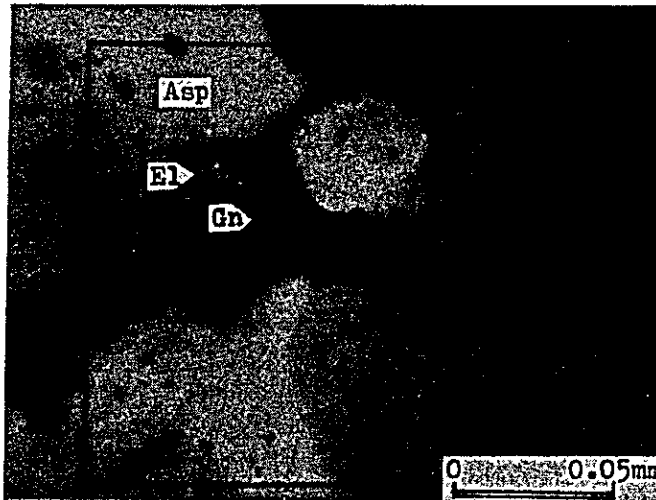
Rock type:
Copper ore



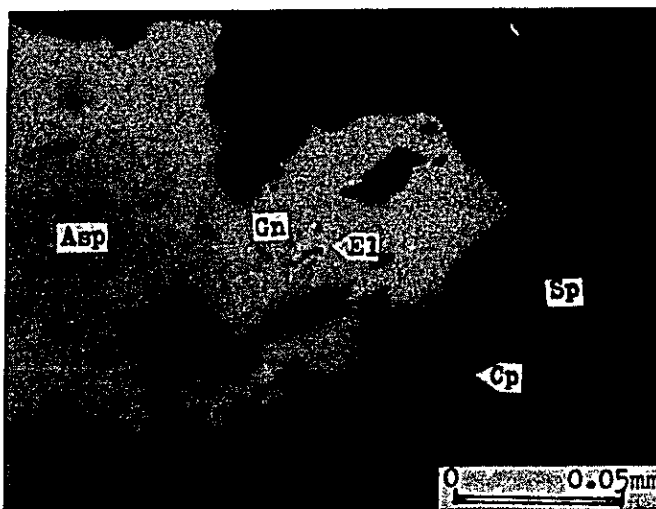
Sample No. D7144(A)

Rock type:

Gold ore



enlarged the above



Sample No. D7144(D)

Rock type:

Gold ore

A. II-18-3 EPMA

Abbreviations

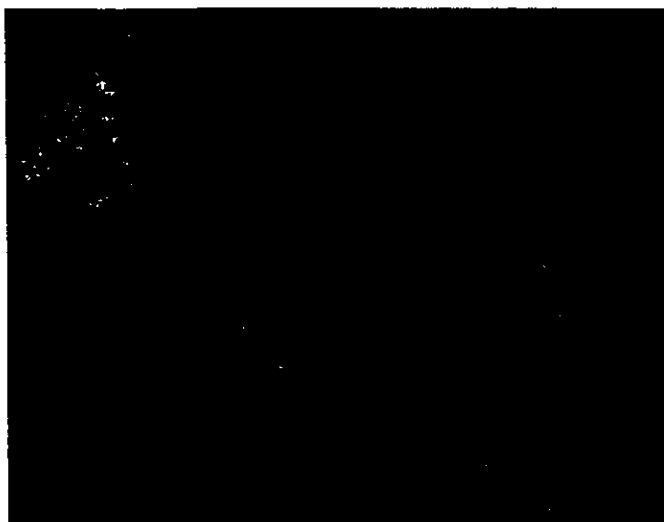
Py : Pyrite
El : Electrum
Asp : Arsenopyrite
Gn : Galena
Bl : Boulangerite
Fr : Freibergite
Cp : Chalcopyrite
Ar : Argentite
Po : Pyrrhotite
G : Gangue mineral



Absorbed electron image
Electrums in gangue
(quartz vein)



Au X-ray image



Ag X-ray image

Sample No. : D5087
Locality : PD-5, at 87m
Accel. volt. : 25 kV
Absorb. elect. : 0.2 μ A

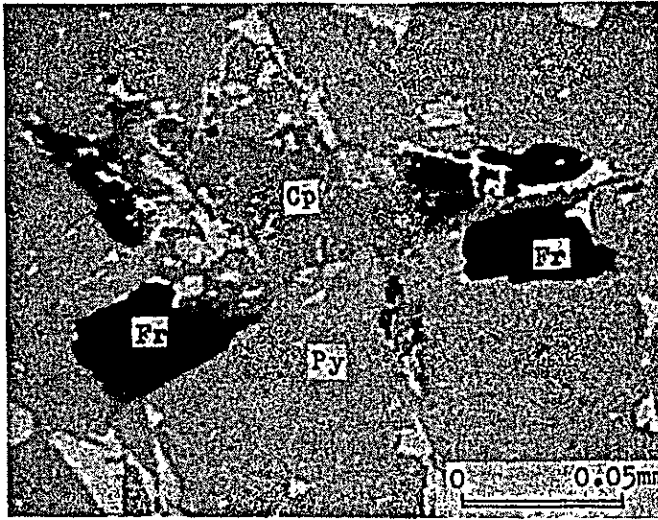


Fe X-ray image



S X-ray image

(continuation of No.D5087)



Absorbed electron image

Freibergite associated with chalcopyrite in a crack of pyrite is observed.



Ag X-ray image

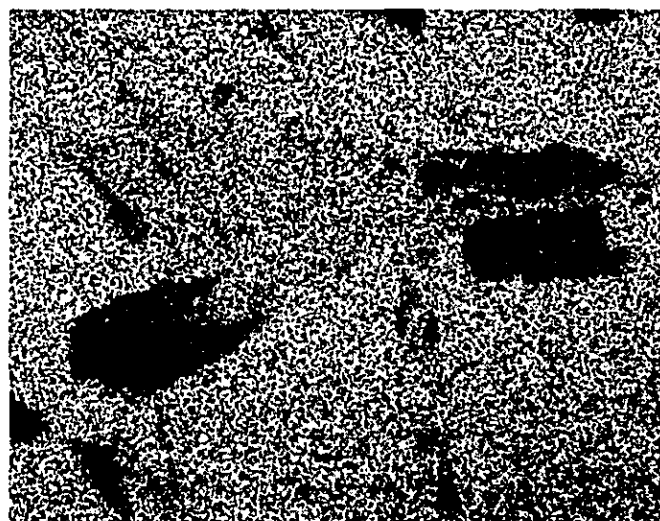


Sb X-ray image

Sample No. : D6073A
Locality : PD-6, at 73m
Accel. volt. : 15 kV
Absorb. elect. : 0.1 μ A



Cu X-ray image

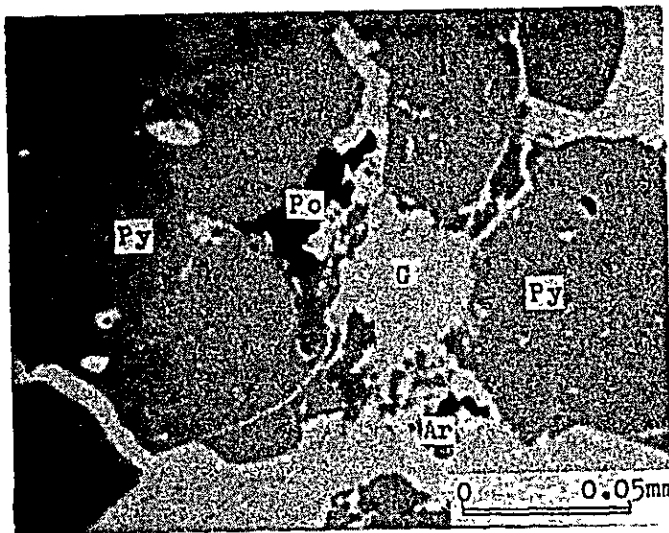


Fe X-ray image



S X-ray image

(continuation of No.D6073A)

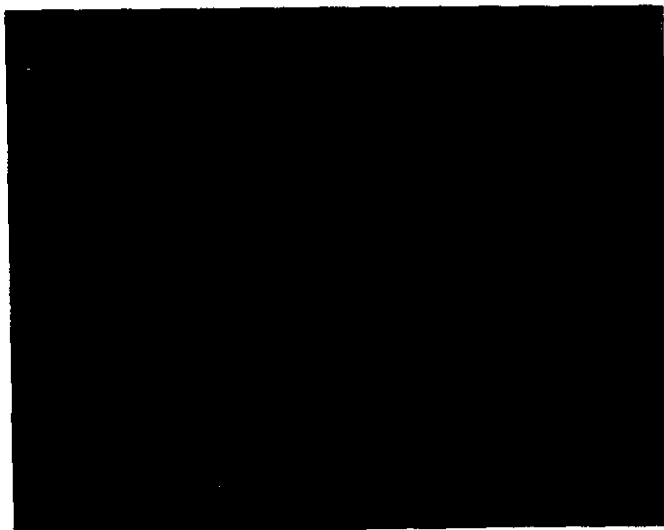


Absorbed electron image

Polybasite $[(Ag, Cu)_{16}Sb_2S_{11}]$ and Argentite are seen in fringe of pyrite, associating with chalcopyrite

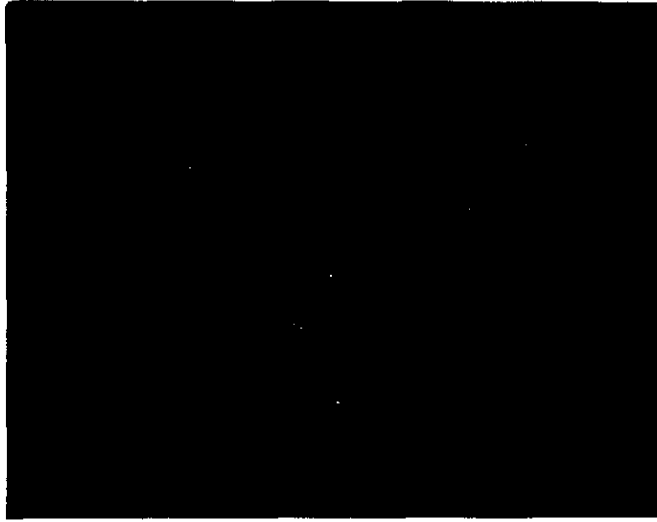


Ag X-ray image

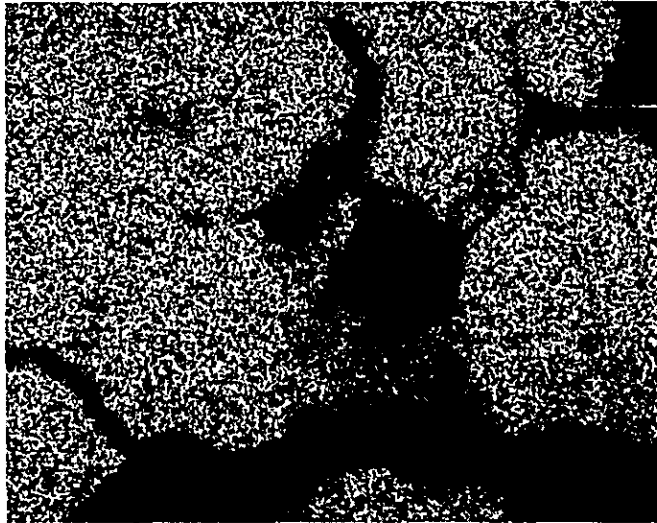


Sb X-ray image

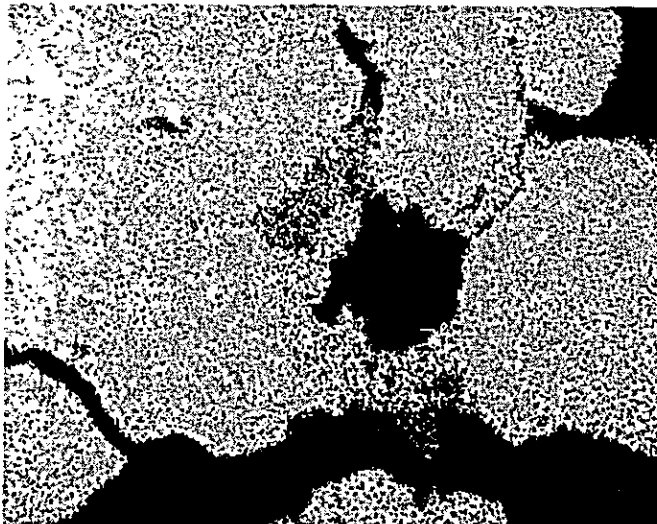
Sample No. : D6073B
 Location : PD-6, at 73m
 Accel. volt. : 15 kV
 Absorb. elect. : 0.1 μ A



Cu X-ray image

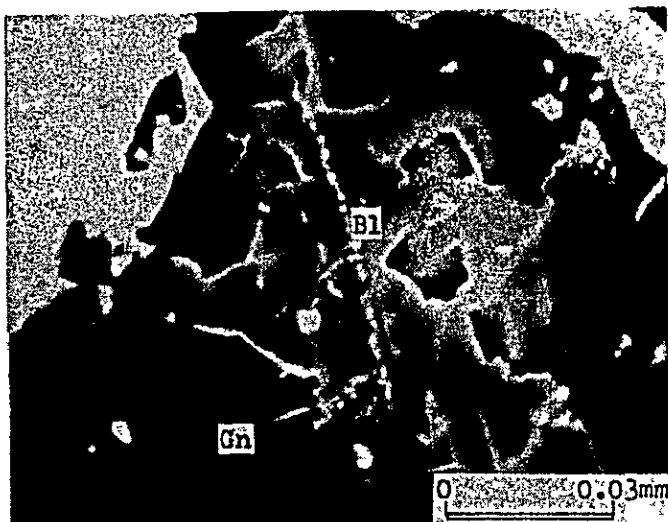


Fe X-ray image



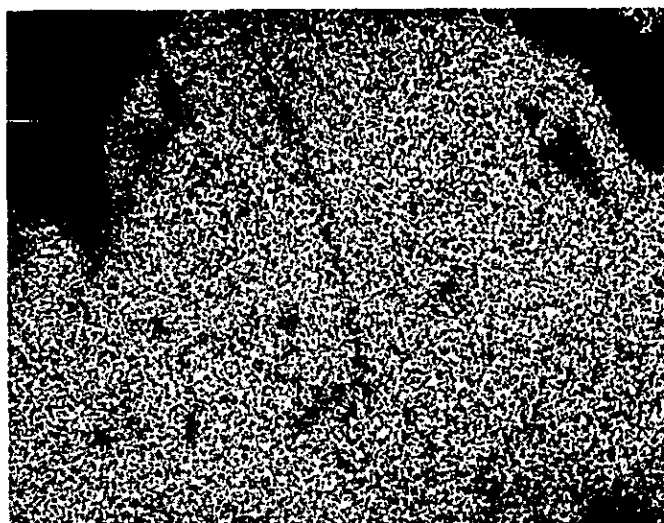
S X-ray image

(continuation of No.D6073B)



Absorbed electron image

Needle like Boulangerite
is observed in galena.



Pb X-ray image

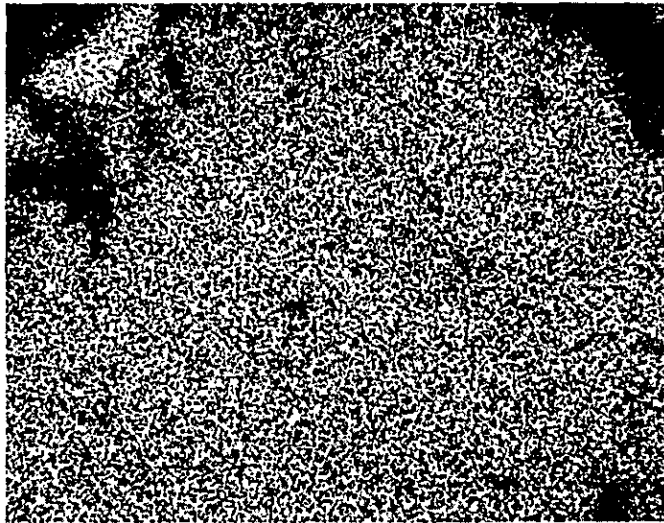


Sb X-ray image

Sample No. : D6073C
Locality : PD-6, at 73m
Accel. volt. : 15 kV
Absorb. elect. : 0.1 μ A

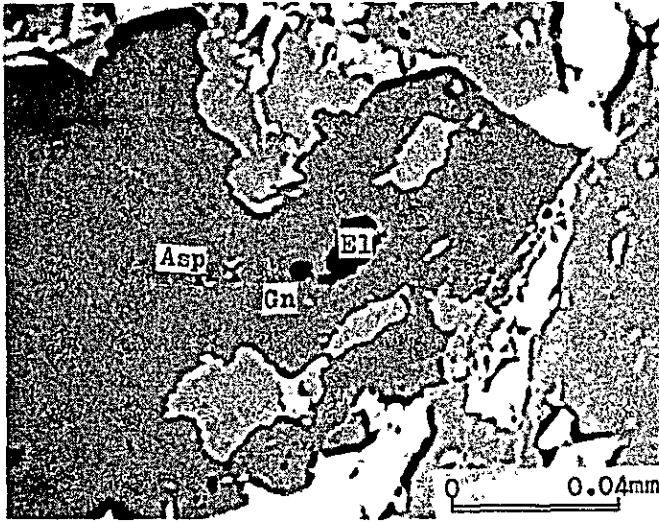


AG X-ray image



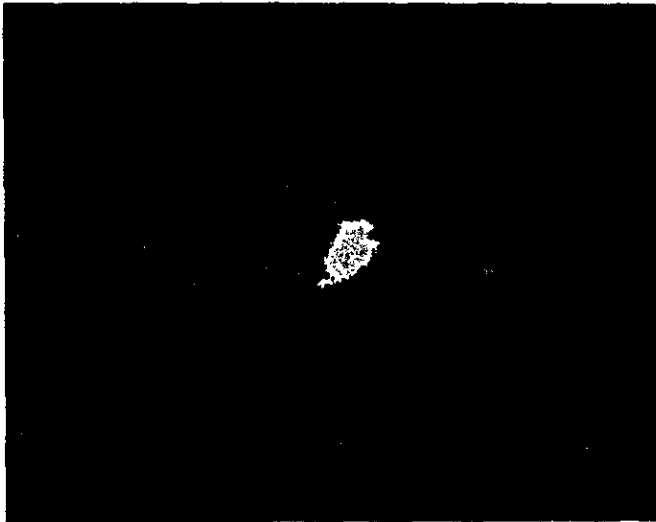
S X-ray image

(continuation of No.6073C)



Absorbed electron image

Electrum and galena in arsenopyrite are observed.

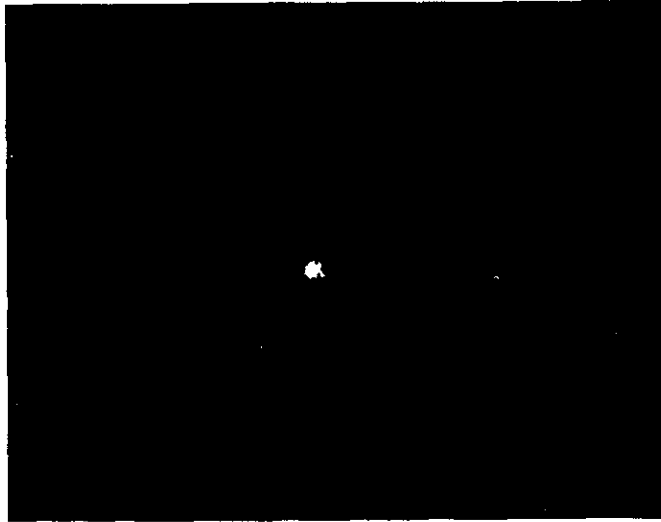


Au X-ray image

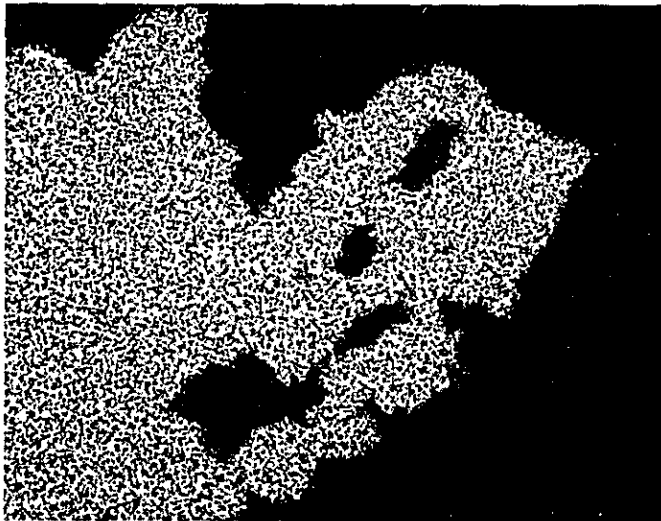


Ag X-ray image

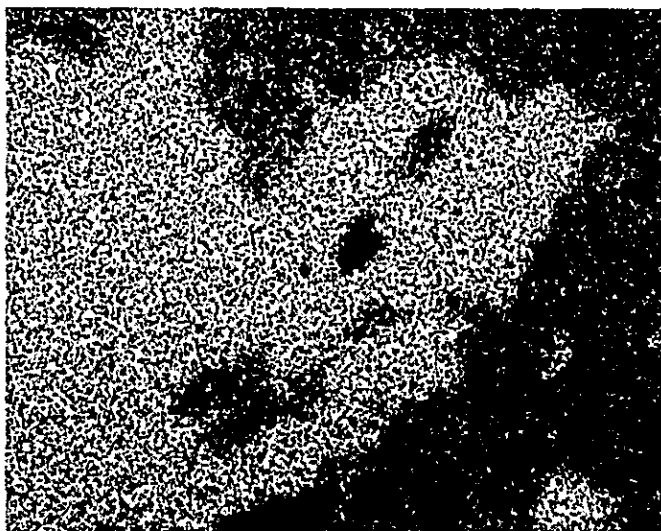
Sample No. : D7144
Locality : PD-7, at 144m
Accel. volt. : 25 kV
Absorb. elect. : 0.2 μ A



Pb X-ray image



As X-ray image



Fe X-ray image

(continuation of No.D7144)

A. II - 19 Charts of X-ray Diffraction Test

