

16205
 16205
 16205

PL. 21

ESTUDIO GEOLOGICO DE EXPLORACION MINERA
 AL SUR DE ANTOFAGASTA EN LA REPUBLICA DE CHILE

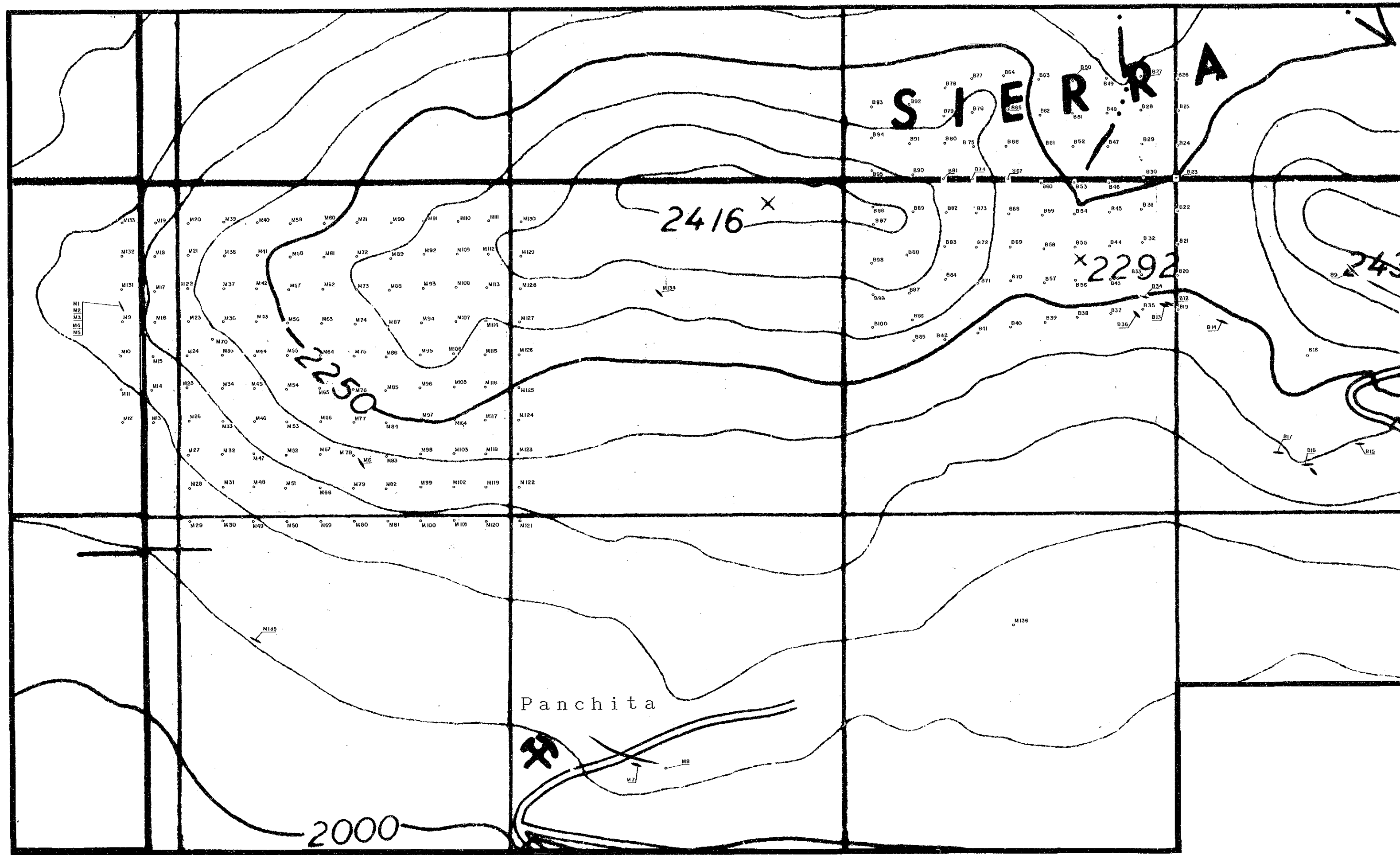
PLANO DE UBICACION DE MUESTRAS
AREA N° 6

ESCALA 1:5000

MAPA DE UBICACION

LEYENDA

Ubicacion de muestra
 Ubicacion de muestra en Veto



SHERA

2416 x

x2292

2000

Panchita

- M1
- M2
- M3
- M4
- M5

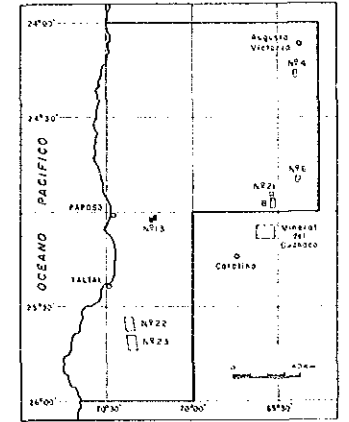


ESTUDIO GEOLOGICO DE EXPLORACION MINERA
AL SUR DE ANTOFAGASTA EN LA REPUBLICA DE CHILE
PLANO DE UBICACION DE MUESTRAS
AREA Nº 13

ESCALA 1:5000

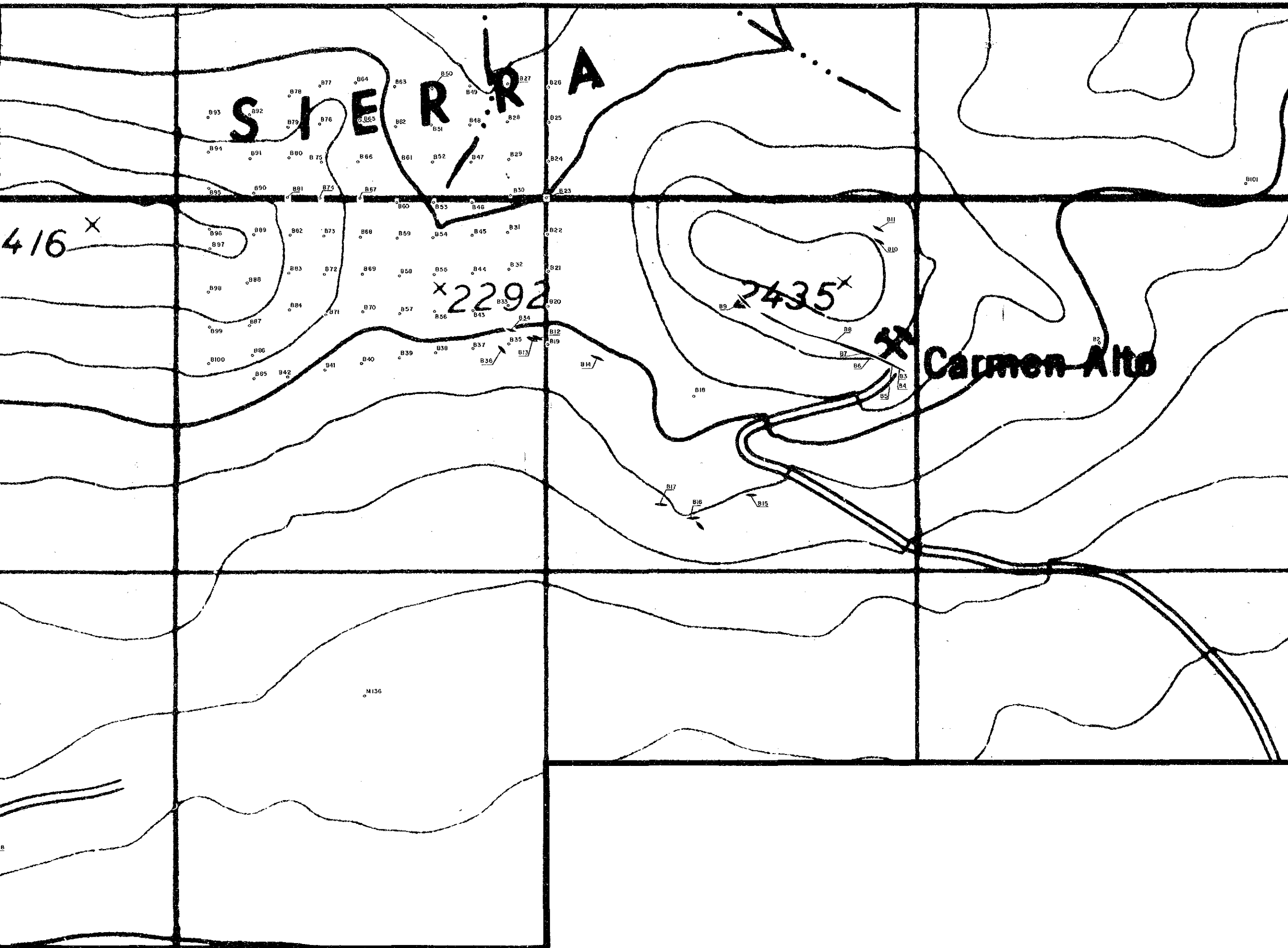


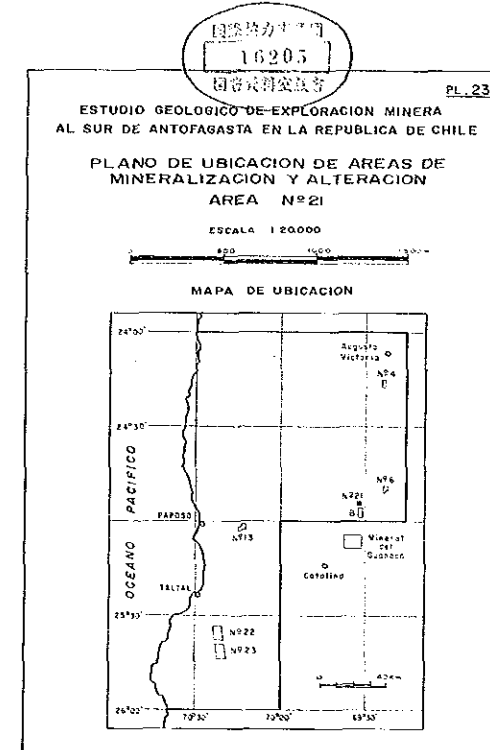
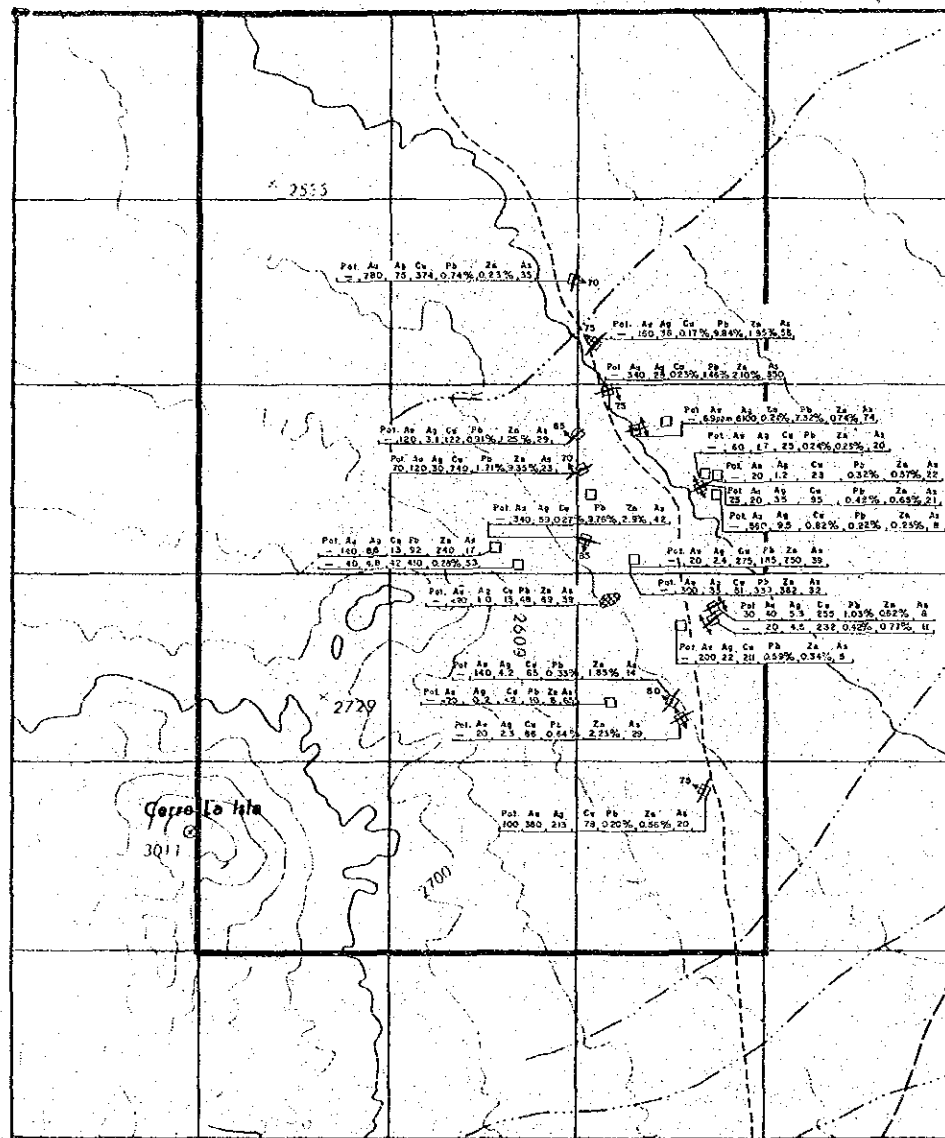
MAPA DE UBICACION



LEYENDA

- B1 Ubicación de muestra
- B2 Ubicación de muestra en Veta

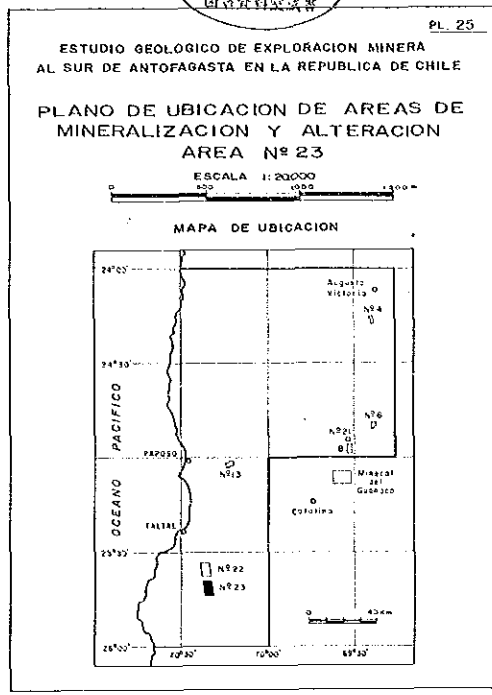
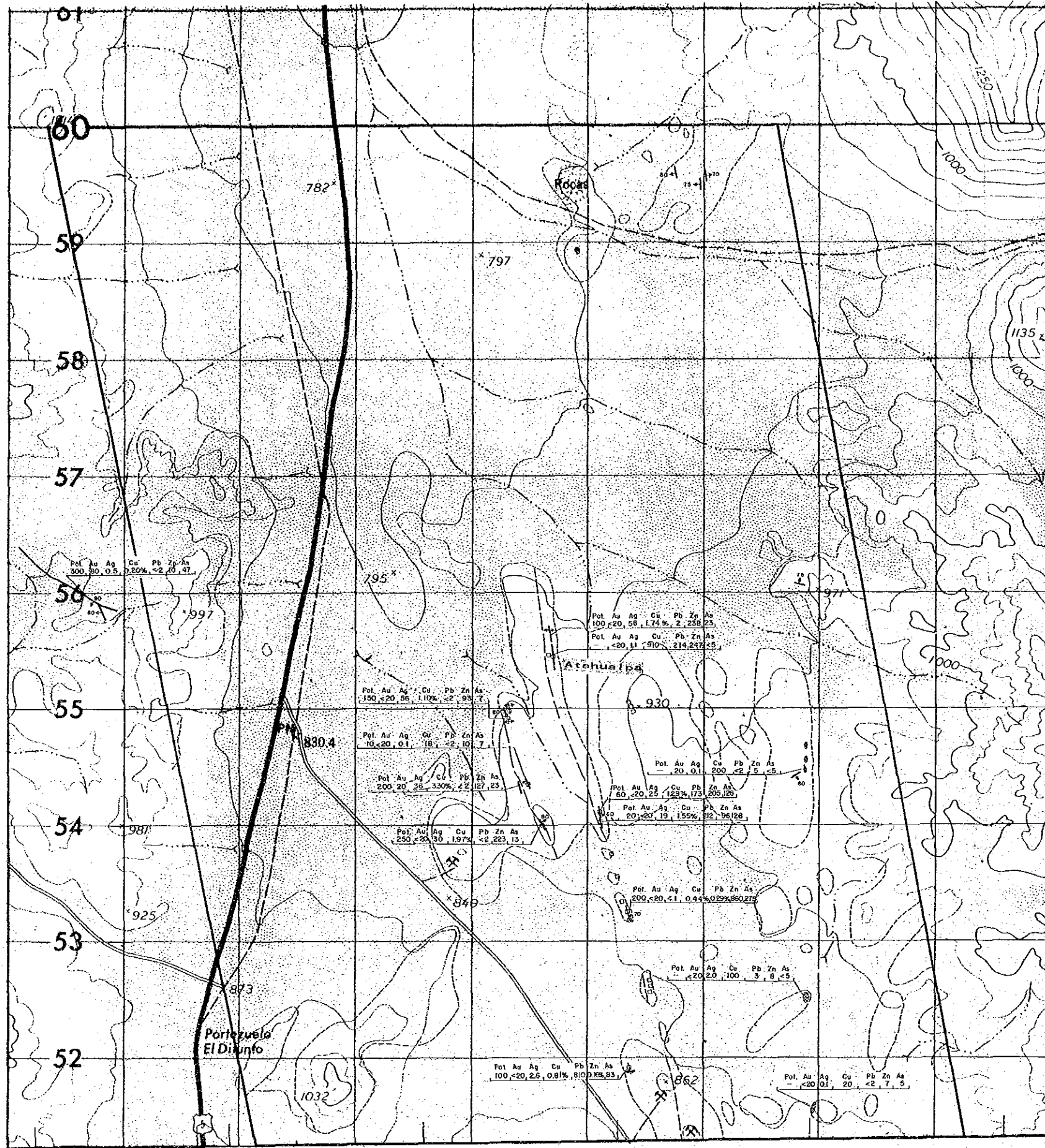




LEYENDA

- Veta
- Ventillos tipo "Network"
- Pique
- Pol Au Ag Cu Pb Zn As
cm, ppb, ppm, ppm, ppm, ppm, ppm

16205



- LEYENDA
- Veta
 - Falla
 - Silicificación
 - Pique o picado
 - Pot, Au, Ag, Cu, Pb, Zn, As
cm, ppb, ppm, ppm, ppm, ppm, ppm

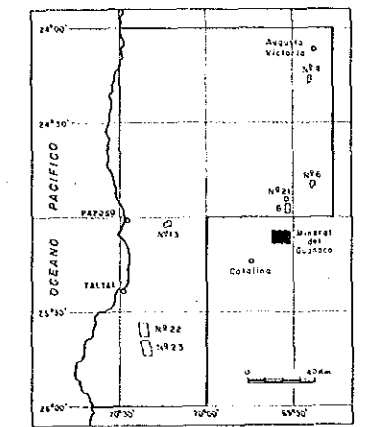
ESTUDIO GEOLOGICO DE EXPLORACION MINERA
AL SUR DE ANTOFAGASTA EN LA REPUBLICA DE CHILE

PLANO DE UBICACION DE AREAS DE
MINERALIZACION Y ALTERACION
AREA MINERAL DEL GUANACO

ESCALA 1:20000

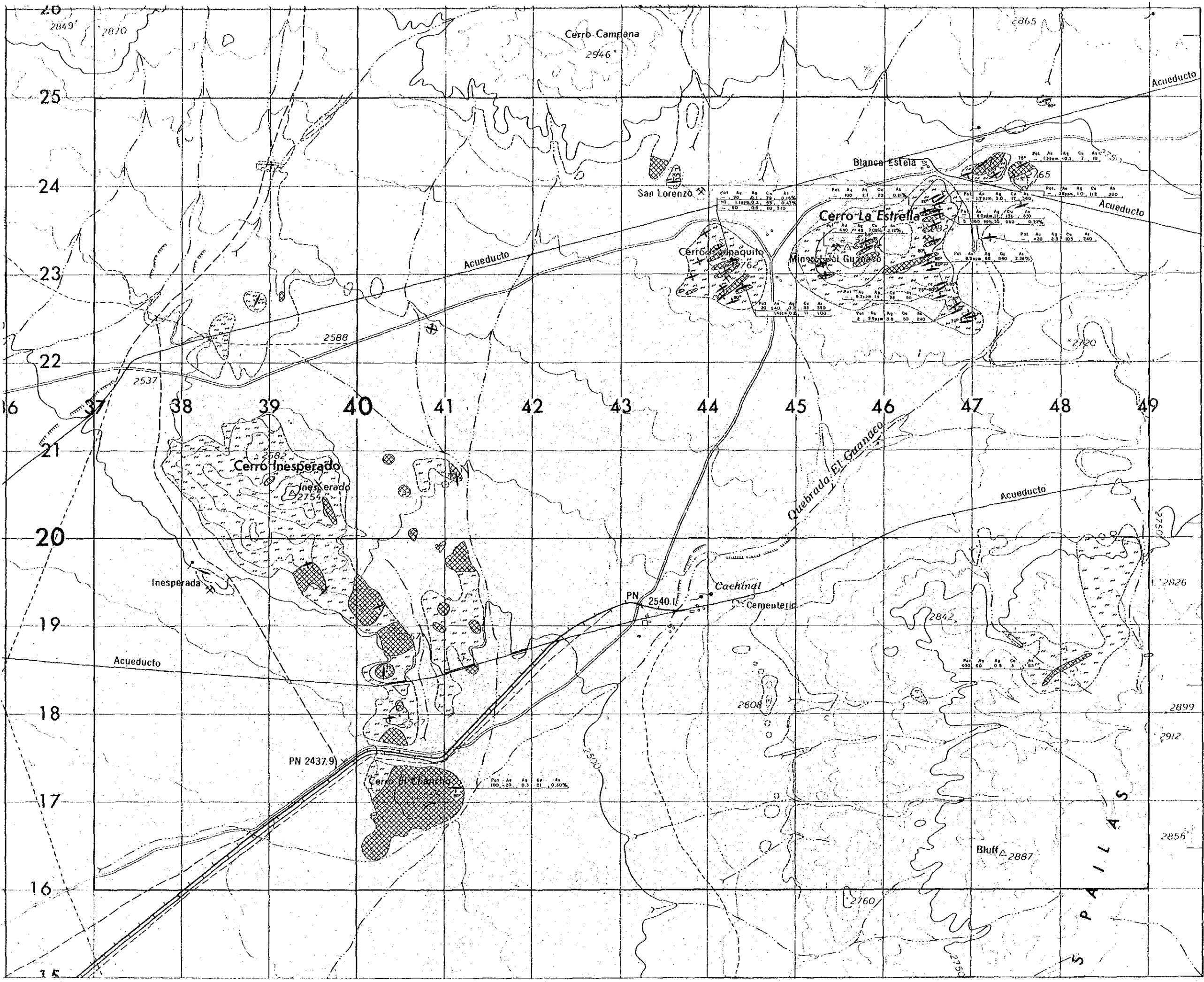


MAPA DE UBICACION



LEYENDA

- Veta
- Silicificación
- Argilización
- | | | | | |
|------|-----|-----|-----|-----|
| Pot. | Au | Ag | Cu | As |
| cm | ppb | ppm | ppm | ppm |



Cerro Campana
2946'

Blanca Estela

San Lorenzo

Cerro La Estrella

Cerro Inesperado

Cerro Inesperado

Caehinal
Cementerio

Bluff 2887

S P A I L L A S

PN 2437.9

PN 2540.1

Pot.	Au	Ag	Cu	As
100	20	0.3	21	0.50%

Pot.	Au	Ag	Cu	As
400	60	0.5	3	53%

Pot.	Au	Ag	Cu	As
100	1.1	22	0.21%	
10	1.12%	0.3	33	0.47%
60	0.6	10	3.10	

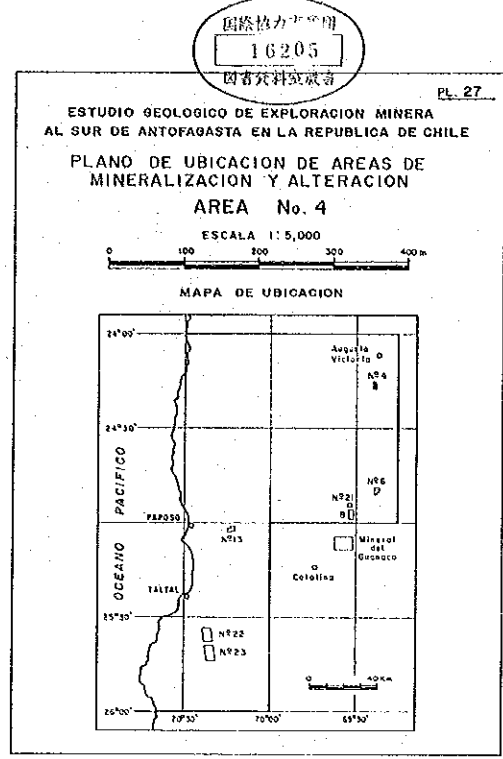
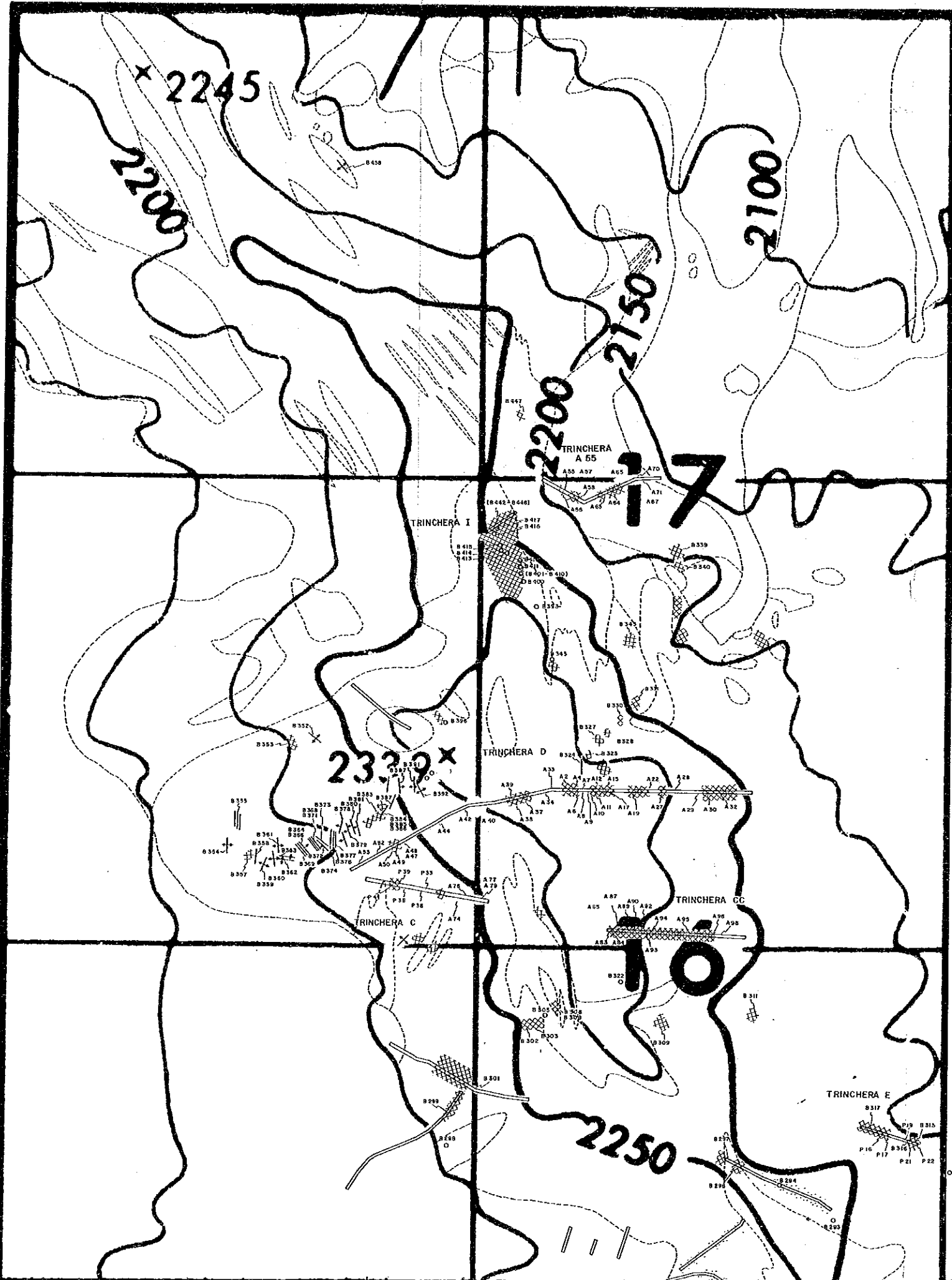
Pot.	Au	Ag	Cu	As
100	1.1	22	0.21%	
10	1.12%	0.3	33	0.47%
60	0.6	10	3.10	

Pot.	Au	Ag	Cu	As
100	1.1	22	0.21%	
10	1.12%	0.3	33	0.47%
60	0.6	10	3.10	

Pot.	Au	Ag	Cu	As
100	1.1	22	0.21%	
10	1.12%	0.3	33	0.47%
60	0.6	10	3.10	

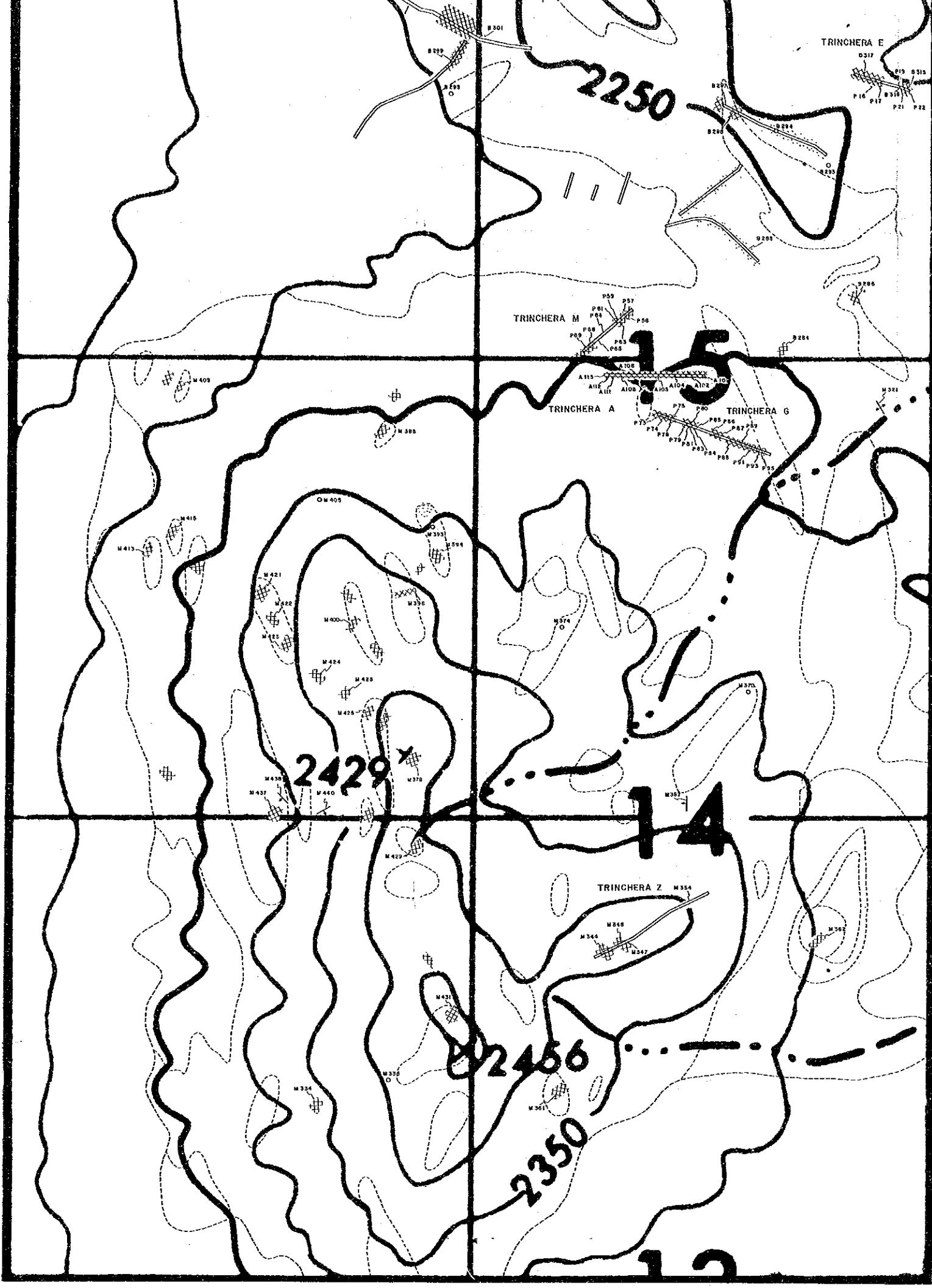
Pot.	Au	Ag	Cu	As
400	60	0.5	3	53%

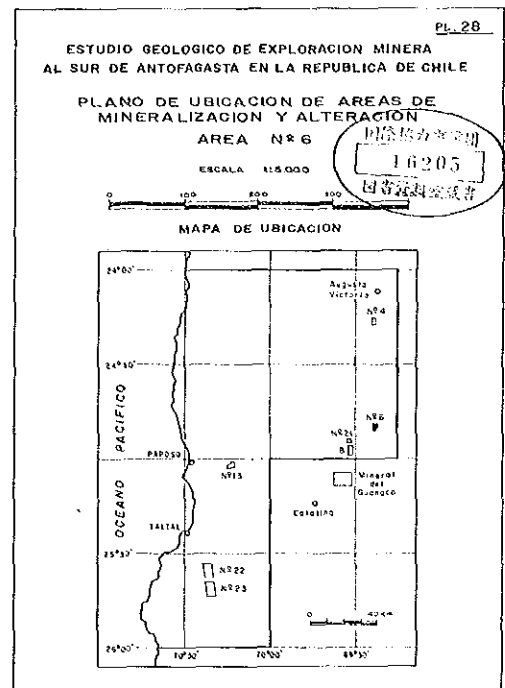
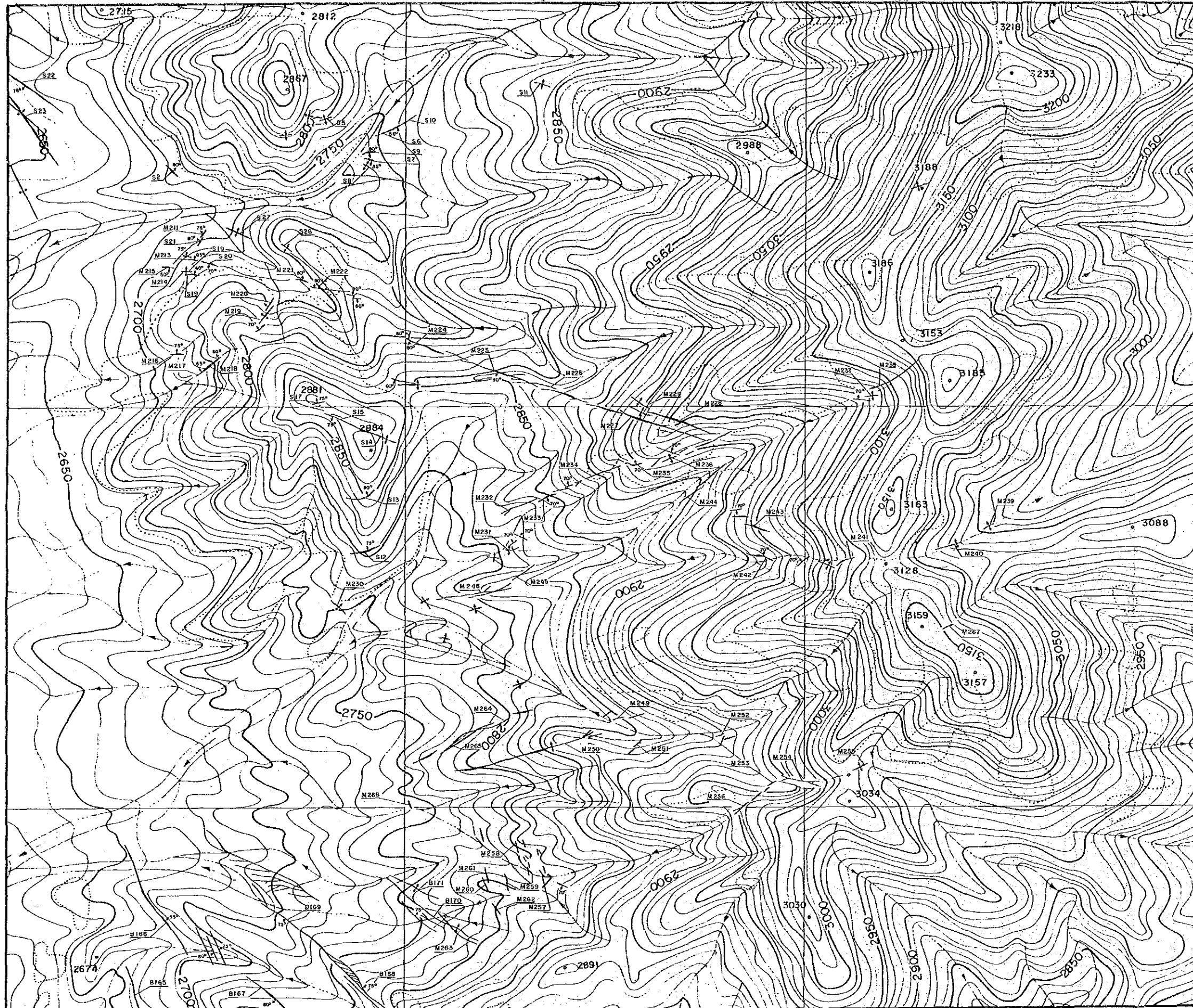
Area	No	Au ppb	Ag ppm	Cu ppm	As ppm
A2	<20	0.3	2	74	
A4	<20	0.4	<2	90	
A6	<20	0.8	2	67	
A7	<20	0.4	3	48	
A8	40	1.1	5	52	
A9	<20	0.7	10	56	
A10	<20	0.3	5	109	
A11	<20	0.7	5	147	
A12	<20	0.1	12	62	
A15	<20	0.1	12	62	
A17	<20	0.2	44	165	
A19	80	0.2	71	400	
A22	40	0.8	34	138	
A27	<20	0.2	88	31	
A28	<20	0.2	99	50	
A29	<20	0.4	39	73	
A30	40	0.3	223	195	
A32	40	0.2	264	184	
A33	<20	0.3	2	51	
A34	<20	0.3	<2	106	
A37	<20	0.4	<2	123	
A38	<20	0.1	<2	103	
A39	<20	0.2	5	115	
A40	<20	<0.1	19	34	
A42	<20	0.4	60	69	
A44	<20	0.1	11	106	
A46	20	0.4	210	215	
A47	20	1.2	94	113	
A49	40	0.8	241	670	
A50	20	0.6	230	360	
A52	<20	0.6	52	170	
A53	<20	0.5	97	107	
A54	20	0.4	16	111	
A56	<20	0.2	0.20%	360	
A57	<20	0.3	400	154	
A58	<20	0.3	230	119	
A63	<20	0.2	28	42	
A64	<20	0.3	59	19	
A65	<20	0.4	32	57	
A67	<20	0.4	41	37	
A70	<20	0.4	83	274	
A71	<20	0.6	71	27	
A74	<20	0.3	61	450	
A76	<20	0.3	153	360	
A77	<20	0.2	72	490	
A79	<20	0.1	47	0.11%	
A83	<20	0.3	88	190	
A84	<20	0.3	11	71	
A85	<20	0.2	140	111	
A87	20	0.1	66	39	
A89	<20	0.3	28	118	
A90	40	0.4	720	900	
A92	20	0.4	330	600	
A93	20	0.2	0.11%	91	
A94	<20	0.0	390	115	
A95	<20	0.3	116	124	
A96	<20	0.3	65	76	
A98	<20	0.2	240	136	
A101	<20	0.2	330	59	
A102	<20	0.3	193	21	
A104	<20	0.3	580	30	
A105	<20	0.3	183	19	
A106	<20	0.6	215	118	
A108	<20	0.3	6	30	
A111	<20	0.4	21	25	
A112	<20	0.3	4	41	
A113	<20	0.3	8	45	
B284	<20	0.2	28	43	
B286	<20	0.5	39	72	
B288	<20	0.1	74	44	
B293	<20	1.3	80	255	
B294	20	0.3	2	25	
B296	40	1.0	3	42	
B297	<20	0.1	153	57	
B298	20	0.8	4	15	
B299	<20	0.1	116	650	
B301	20	0.1	112	184	
B302	20	0.2	203	350	
B303	40	<0.1	42	51	
B305	<20	0.2	45	0.17%	
B306	<20	0.2	34	232	
B308	<20	0.1	10	196	
B309	<20	0.1	240	196	
B311	<20	0.1	0.13%	235	
B315	<20	0.2	154	96	
B317	<20	0.1	50	67	
B324	40	0.2	4	67	
B325	<20	0.3	4	100	
B327	<20	0.2	4	59	
B328	20	0.2	3	136	
B330	20	0.2	3	138	
B331	<20	0.1	63	86	
B339	<20	0.1	64	143	
B340	<20	0.3	102	186	
B343	80	2.7	440	340	
B345	20	0.3	140	0.12%	
B352	80	0.9	48	58	
B353	<20	0.1	350	110	
B364	<20	0.1	4	25	
B355	<20	0.2	7	78	
B357	<20	0.2	35	16	
B358	<20	0.2	390	142	
B359	<20	0.2	119	48	
B360	<20	0.2	160	140	
B361	20	0.1	165	104	
B362	<20	0.1	170	33	
B363	<20	7.9	54	57	
B364	340	5.1	76	177	
B365	140	1.8	140	206	
B366	160	1.8	84	96	
B367	40	0.7	26	16	
B368	100	1.4	44	17	
B369	60	1.4	58	46	
B370	<20	1.0	183	0.14%	
B371	40	1.1	153	330	
B372	20	1.0	212	725	
B373	<20	0.4	71	178	
B374	<20	0.2	134	90	
B376	<20	0.2	125	87	
B377	<20	0.2	65	57	
B378	40	0.3	96	65	
B379	<20	0.2	155	50	
B380	20	0.2	165	300	
B381	<20	0.2	118	258	
B383	20	0.5	40	371	
B384	<20	0.2	10	118	
B385	40	0.3	10	24	
B386	80	0.5	10	17	
B387	40	0.6	28	58	
B388	<20	0.3	17	430	
B391	<20	0.2	9	220	
B392	<20	0.1	<2	39	
B396	<20	0.1	<2	18	
B398	<20	0.2	<2	47	
B400	<20	0.1	<2	7	
B401	<20	0.2	72	250	
B402	<20	0.3	58	170	
B403	<20	0.3	48	227	
B404	<20	0.2	65	125	
B405	<20	0.7	31	400	
B406	<20	0.2	60	153	
B407	<20	0.2	60	180	
B409	<20	0.3	47	160	
B409	<20	0.2	99	170	
B411	20	0.2	112	430	
B412	<20	0.2	81	380	



- LEYENDA
- B331, ○-B361, ○-B357: Ubicación de muestra
 - ▨: Vejitillas tipo "network"
 - : Vejitilla de rumbo preferencial
 - ▨: Impregnación de ilmenita
 - : Roca alterada
 - ▭: Trincheras

B378	40	0.3	98	63
B379	<20	0.2	155	58
B380	<20	0.2	169	100
B381	<20	0.2	118	259
B383	20	0.5	40	37.1
B384	<20	0.2	10	118
B385	40	0.3	7	24
B386	80	0.5	10	17
B387	40	0.6	28	58
B388	<20	0.3	17	430
B391	<20	0.2	9	220
B392	<20	0.1	4.2	33
B396	<20	0.1	4.2	18
B398	<20	0.2	4.2	47
B400	<20	0.1	4.2	7
B401	<20	0.2	72	250
B402	<20	0.3	58	170
B403	<20	0.3	48	257
B404	<20	0.2	65	125
B405	<20	0.7	91	400
B406	<20	0.7	60	143
B407	<20	0.2	60	180
B408	<20	0.3	47	160
B409	<20	0.2	99	170
B411	<20	0.2	112	430
B412	<20	0.2	81	300
B413	<20	0.2	123	270
B414	<20	0.2	400	720
B415	<20	0.2	87	173
B416	<20	0.1	50	38
B417	<20	0.1	290	87
B442	20	0.3	260	105
B443	<20	0.2	290	49
B444	<20	0.1	280	127
B445	<20	0.2	413	300
B446	60	1.0	870	38
B447	<20	0.1	51	162
B458	<20	2.5	67	210
M321	<20	0.1	21	27
M334	<20	0.2	86	37
M335	20	0.6	38	67
M344	<20	0.1	13	10
M346	<20	0.2	241	4.5
M347	<20	0.1	81	17
M354	<20	0.1	24	28
M361	<20	1.1	10	25
M362	<20	0.5	4.2	11
M367	<20	0.2	50	120
M370	<20	0.2	1.2	68
M374	<20	0.1	3	17
M378	40	3.1	52	100
M388	<20	0.2	125	38
M393	<20	0.1	14	33
M394	<20	0.3	26	62
M395	<20	0.5	13	42
M400	20	0.2	66	50
M405	<20	0.8	37	122
M409	<20	0.4	4	66
M413	<20	0.3	5	13
M415	<20	0.3	2	36
M421	<20	0.2	7	36
M422	<20	0.3	7	33
M423	<20	0.2	25	25
M424	40	0.6	12	53
M425	<20	1.2	95	64
M426	<20	1.2	21	38
M429	<20	0.2	40	29
M431	<20	0.1	7	29
M437	<20	0.2	186	20
M438	<20	0.5	65	20
M440	<20	0.3	40	8
P16	<20	0.1	50	77
P17	<20	0.1	88	21
P19	<20	0.4	25	303
P21	<20	0.2	139	78
P22	<20	0.1	148	62
P33	<20	0.1	44	40
P36	<20	0.1	191	316
P38	<20	0.2	15	106
P39	<20	0.2	6	45
P41	<20	0.1	3	126
P56	<20	0.1	83	92
P57	<20	0.1	295	81
P58	<20	0.1	148	100
P61	<20	0.1	168	150
P63	<20	0.1	283	66
P64	<20	0.2	357	135
P66	<20	0.1	61	91
P68	<20	0.2	21	31
P69	<20	0.1	21	58
P73	<20	0.2	46	33
P74	<20	0.1	100	34
P75	<20	0.2	92	38
P78	<20	0.1	102	39
P79	<20	0.1	52	48
P80	<20	0.1	67	37
P81	<20	0.1	44	27
P83	<20	0.1	87	45
P84	<20	0.1	91	54
P85	<20	0.1	146	61
P86	<20	0.1	56	55
P87	<20	0.1	162	43
P88	<20	0.1	127	59
P89	<20	0.1	131	57
P91	<20	0.1	96	78
P93	<20	0.1	97	78
P95	<20	0.1	153	87

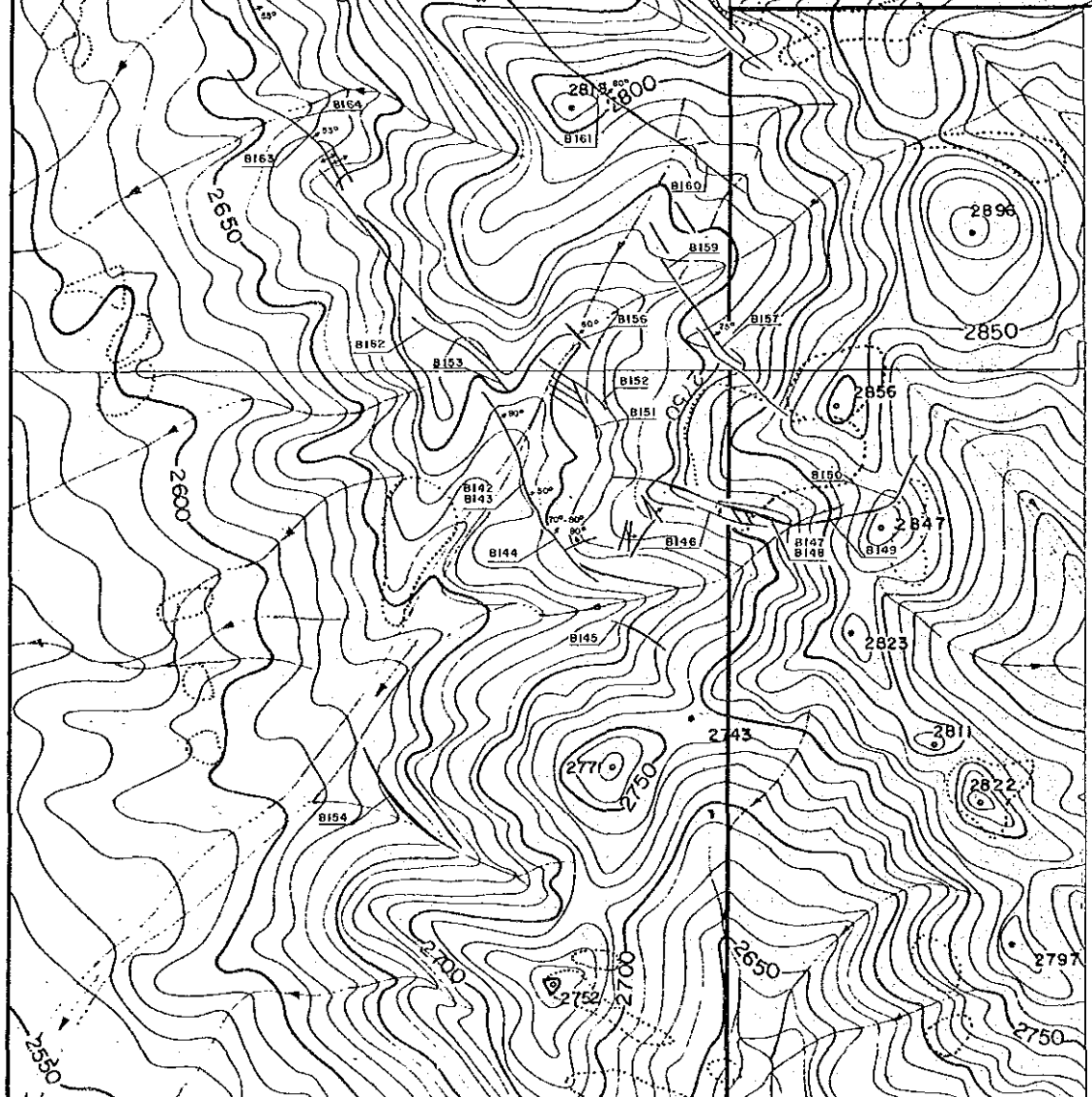
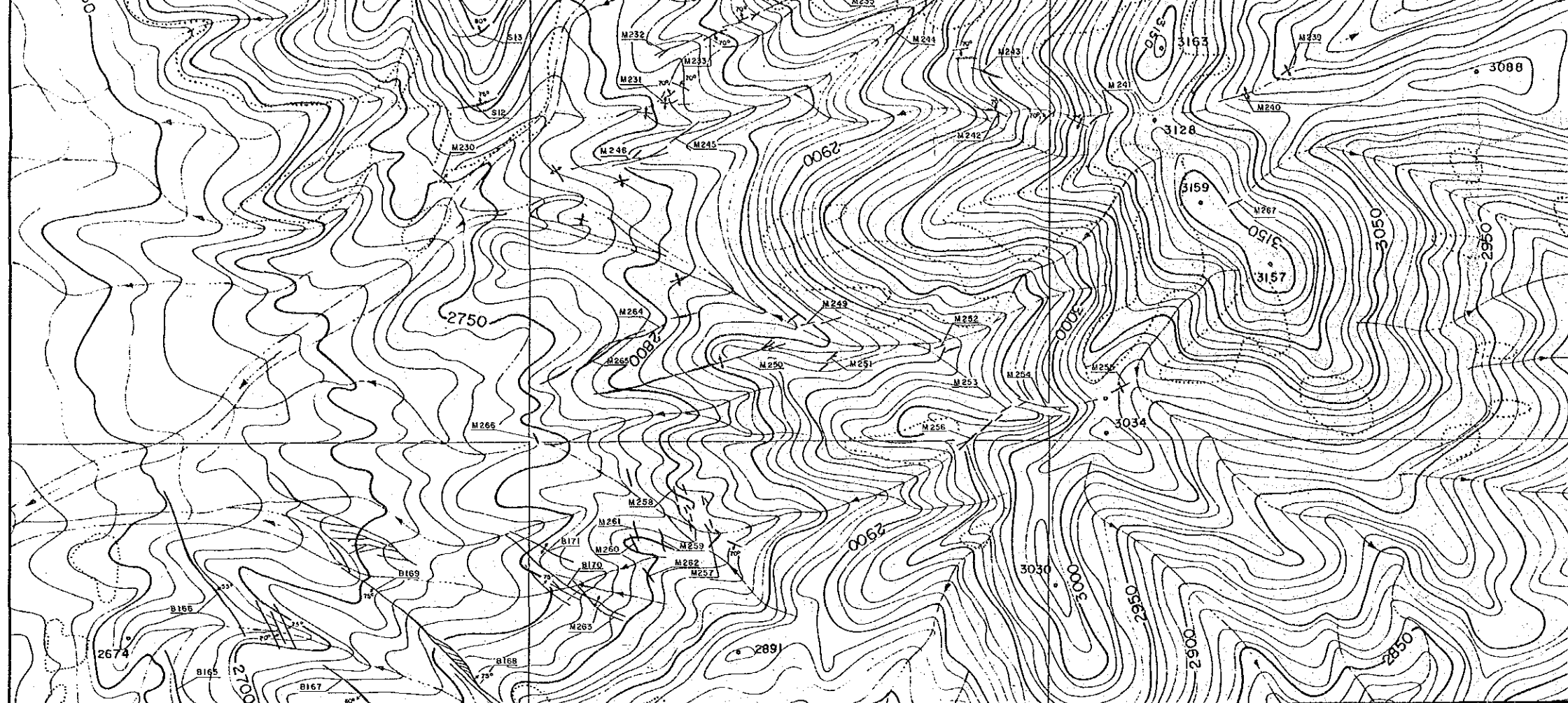




- LEYENDA
- Veta
 - Número de muestra

ANALISIS QUIMICOS DE MENA DEL AREA Nº 6

Muestra Nº	Pot. cm	Au ppb	Ag ppm	Cu ppm	Pb ppm	Zn ppm	As ppm	Muestra Nº	Pot. cm	Au ppb	Ag ppm	Cu ppm	Pb ppm	Zn ppm	As ppm
B 142	70	<20	0.9	174	139	240	48	M 237	15	120	0.5	7.4	109	20	16
B 143	70	<20	1.5	420	204	470	187	M 238	80	<20	0.5	110	510	530	35
B 144	50	<20	3.5	0.42%	0.70%	227	36	M 239	180	<20	0.2	32	42	58	12
B 145	45	<20	0.2	3	4	97	13	M 240	40	20	1.0	100	70	36	26
B 146	80	<20	<0.1	3	4	42	15	M 241	40	<20	0.4	13.5	22	29	19
B 147	90	<20	0.3	5.5	7	7	14	M 242	40	<20	0.3	6	3	3	<5
B 148	90	<20	0.4	3.2	11	5	20	M 243	40	<20	0.2	2.4	5	12	10



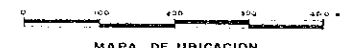
ANALISIS QUIMICOS DE MENA DEL AREA N° 6

Muestra N°	Pot cm	Au ppb	Ag ppm	Cu ppm	Pb ppm	Zn ppm	As ppm	Muestra N°	Pot cm	Au ppb	Ag ppm	Cu ppm	Pb ppm	Zn ppm	As ppm
B 142	70	<20	0.9	174	139	240	48	M237	15	120	0.5	7.4	109	20	16
B 143	70	<20	1.5	420	204	470	187	M238	80	<20	0.5	110	510	530	35
B 144	50	<20	35	0.42%	0.70%	227	36	M239	180	<20	0.2	32	42	56	12
B 145	45	<20	0.2	3	4	97	13	M240	40	20	1.0	100	70	36	26
B 146	80	<20	<0.1	3	4	42	15	M241	40	<20	0.4	133	22	29	19
B 147	90	<20	0.3	55	7	14	14	M242	40	<20	0.3	6	3	3	<5
B 148	90	<20	0.4	32	11	6	20	M243	40	<20	0.2	2.4	5	12	10
B 149	40	<20	2.4	720	420	48	34	M244	40	<20	0.5	14	4	4	5
B 150	40	60	86	0.12%	9.20%	0.61%	110	M245	120	<20	0.6	128	6	10	6
B 151	10	<20	0.1	7	238	243	13	M246	40	<20	0.4	118	13	14	35
B 152	40	<20	1.5	192	0.11%	0.86%	48	M249	40	<20	1.6	180	16	6	29
B 153	<20	0.1	4	13	26	9	6	M250	80	<20	1.9	480	28	35	42
B 154	<20	0.1	3	38	10	6	6	M251	30	<20	1.6	101	380	48	26
B 155	<20	0.1	3	38	10	6	6	M252	20	20	0.4	22	28	13	9
B 156	25	<20	9.0	0.17%	0.23%	0.11%	150	M253	50	<20	1.6	144	117	0.20%	53
B 157	90	<20	0.2	53	6	11	18	M254	180	20	0.9	68	154	23	41
B 159	20	<20	0.3	42	5	37	19	M255	100	20	8.6	80	1.55%	0.12%	39
B 160	40	<20	0.4	184	7	67	32	M256	110	20	2.5	370	2.25%	59	98
B 161	110	20	1.6	220	0.12%	0.22%	59	M257	60	<20	1.6	283	55	29	47
B 162	-	<20	0.3	18	750	510	10	M258	60	<20	1.4	250	324	163	59
B 163	50	<20	0.1	3	69	94	7	M259	110	<20	0.2	3	7	14	8
B 164	196	<20	1.6	42	0.24%	0.28%	23	M260	60	<20	0.1	<2	7	4	11
B 165	-	<20	2.3	80	0.39%	0.43%	27	M261	30	<20	0.6	830	23	38	158
B 166	80	<20	2.0	810	288	210	250	M262	30	<20	0.2	3	3	4	12
B 167	140	10	3.9	220	0.31%	0.78%	13	M263	30	<20	0.4	44	14	4	12
B 168	990	<20	0.6	84	120	550	13	M264	40	<20	0.3	52	4	5	13
B 169	250	<20	0.3	21	13	6	17	M265	50	<20	0.9	610	23	262	28
B 170	40	<20	0.7	590	7	10	43	M266	100	<20	0.1	3	108	35	14
B 171	20	<20	0.1	5	2	4	7	M267	20	20	4.3	230	0.33%	440	24
M211	30	<20	0.2	6	16	41	12	S 2 A	70	<20	1.7	610	16	430	128
M213	20	<20	0.3	38	3	34	25	S 4 A	-	<20	0.2	3	5	12	10
M214	10	<20	0.2	102	15	107	72	S 5 A	50	<20	<0.1	4	17	10	10
M216	20	<20	0.7	330	10	50	87	S 6 A	1.000	<20	3.1	310	79	157	66
M217	30	<20	1.2	27	33	44	21	S 7 A	30	<20	<0.1	10	2	60	15
M218	150	<20	0.8	118	31	260	56	S 8 A	30	<20	0.6	88	6	41	39
M219	170	<20	0.4	3	11	32	39	S 9 A	60	<20	0.7	270	162	450	54
M220	50	<20	0.2	7	13	24	24	S 10 A	150	<20	0.3	14	42	29	15
M221	40	<20	0.2	2	12	18	60	S 11 A	30	<20	0.4	117	900	60	26
M222	230	<20	0.2	9	4	18	12	S 12 A	80	<20	1.4	133	9	11	70
M224	70	<20	3.9	560	0.15%	156	130	S 13 A	40	<20	0.2	16	29	6	12
M225	310	<20	0.2	210	14	41	80	S 14 A	160	<20	20	0.32%	93	730	780
M226	210	<20	0.2	45	12	12	19	S 15 A	130	<20	1.5	210	39	58	64
M227	140	40	0.5	113	5	10	16	S 17 A	30	<20	0.3	46	24	104	106
M228	30	<20	0.3	28	10	8	27	S 19 A	10	<20	0.4	130	7	42	29
M229	50	<20	0.2	60	3	6	13	S 20 A	40	<20	<0.1	60	2	9	14
M230	130	<20	2.4	103	0.12%	97	60	S 21 A	20	<20	<0.1	50	2	6	12
M231	30	<20	0.3	62	14	52	45	S 22 A	180	<20	<0.1	11	2	4	8
M232	110	<20	0.3	82	63	12	26	S 23 A	150	<20	0.7	940	7	23	330
M233	110	<20	0.9	450	9	31	45	S 24 A	200	<20	0.6	4	41	30	19
M234	210	<20	0.2	224	26	25	37	S 25 A	40	<20	31	790	0.26%	44	34
M235	40	<20	0.1	4	3	6	5	S 26 A	<20	<20	<0.1	4	7	5	8
M236	60	<20	0.4	57	17	5	20	S 27 A	<20	<20	0.2	6	5	11	6

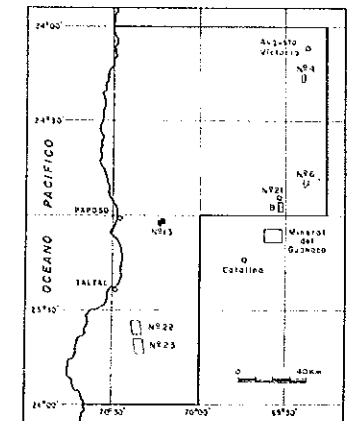
ESTUDIO GEOLOGICO DE EXPLORACION MINERA
AL SUR DE ANTOFAGASTA EN LA REPUBLICA DE CHILE

PLANO DE UBICACION DE AREAS DE
MINERALIZACION Y ALTERACION
AREA N°13

ESCALA 1:5.000

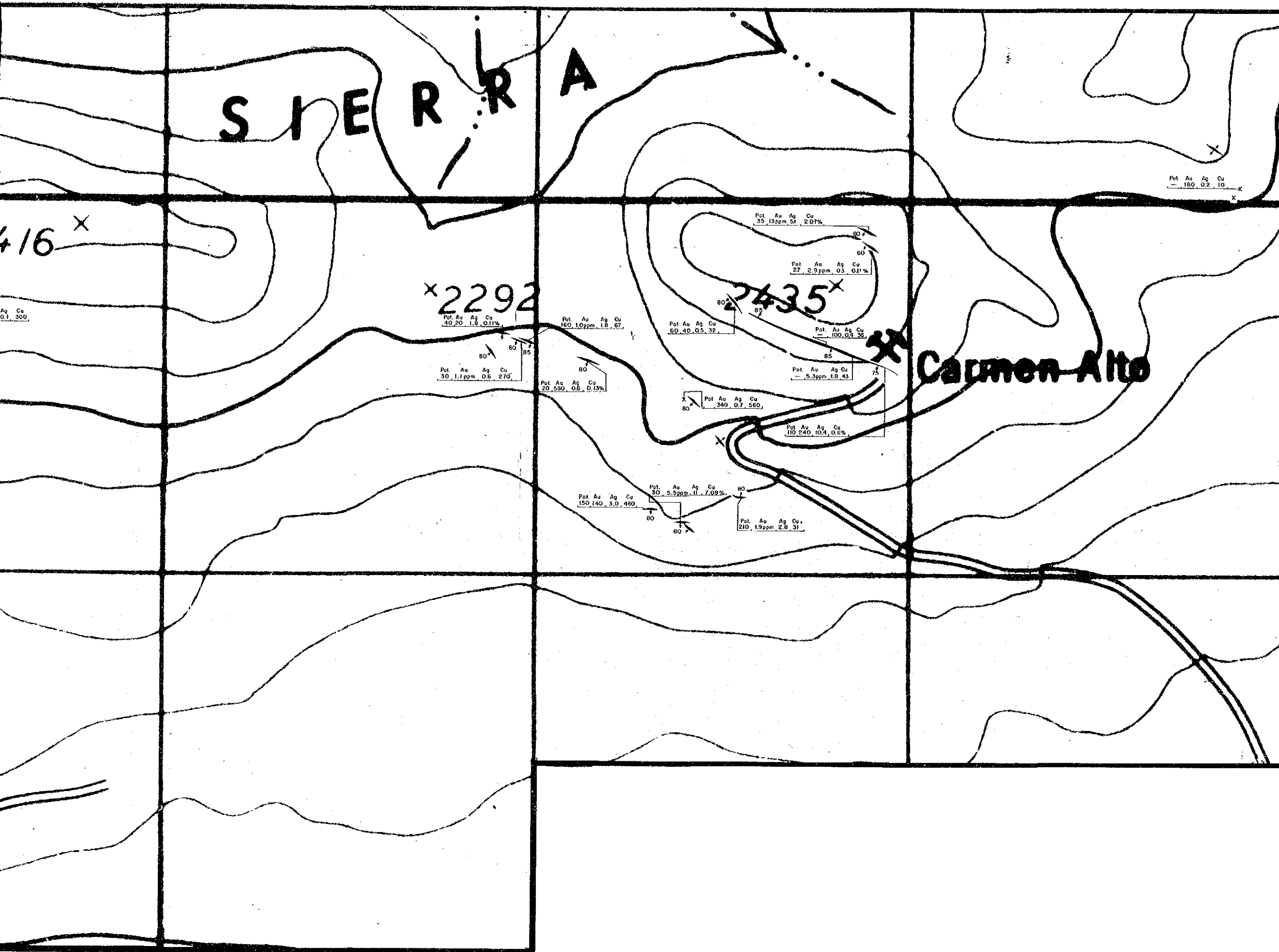


MAPA DE UBICACION



LEYENDA

- Veto
- Muestra de rodado de cuarzo
- Sector de rodados de cuarzo
- Pol. Au Ag Cu
(cm), ppb, ppm, ppm



16205

PL. 30

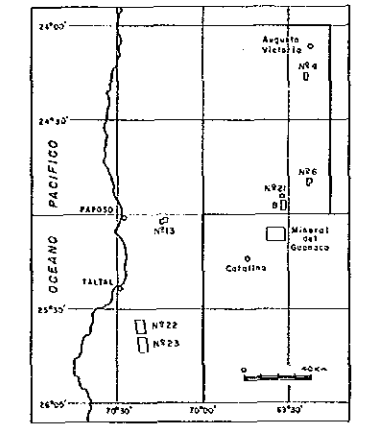
ESTUDIO GEOLOGICO DE EXPLORACION MINERA
AL SUR DE ANTOFAGASTA EN LA REPUBLICA DE CHILE

MAPA DE ANOMALIAS GEOQUIMICAS
AREA No. 21

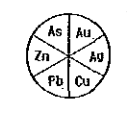
Escala 1:20,000



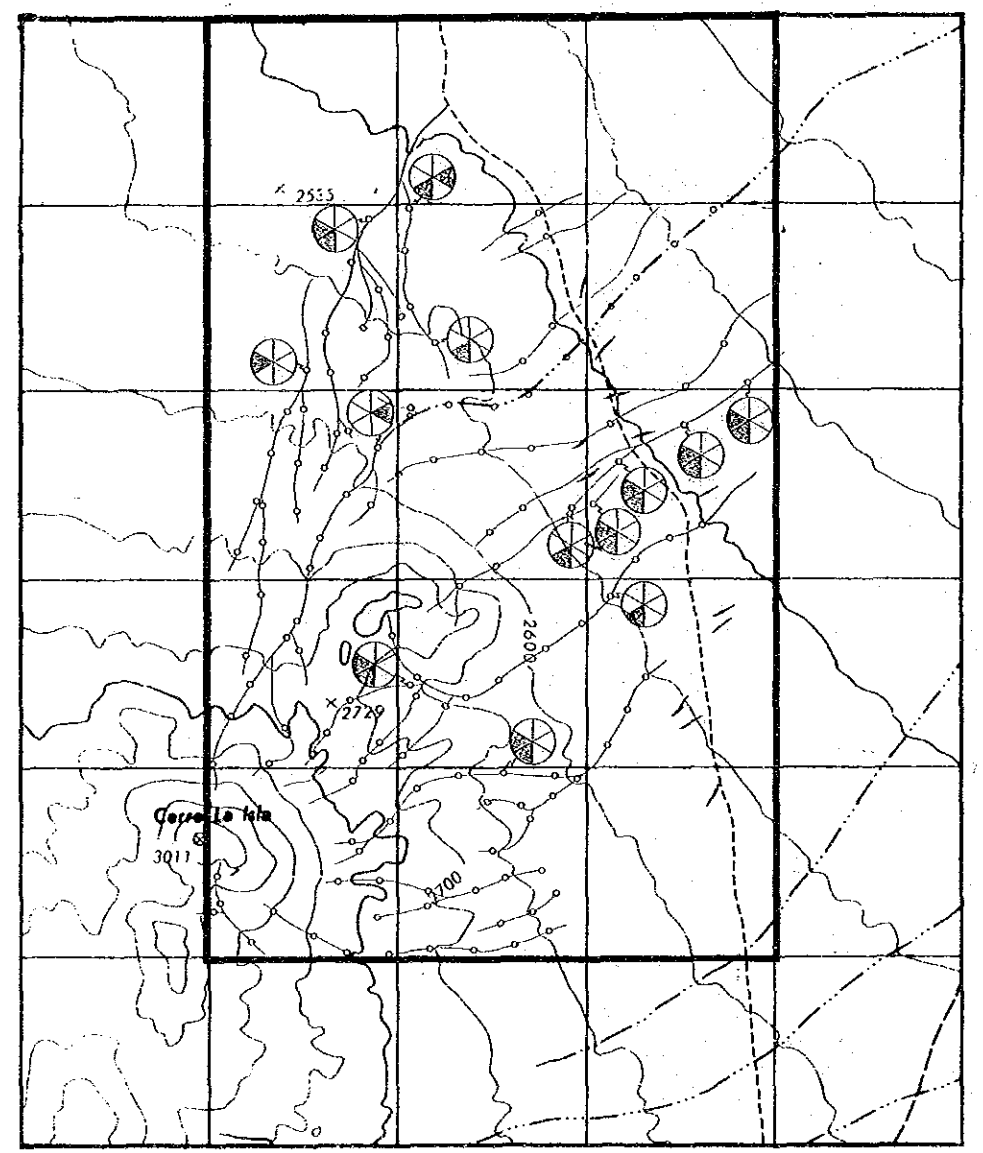
MAPA DE UBICACION

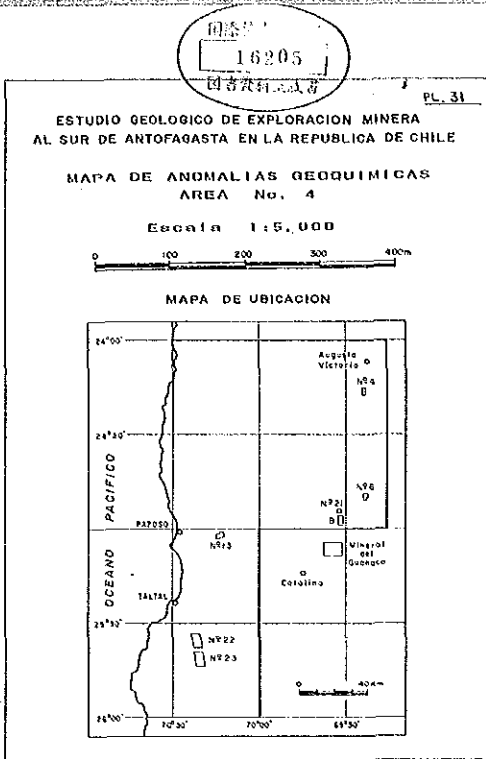
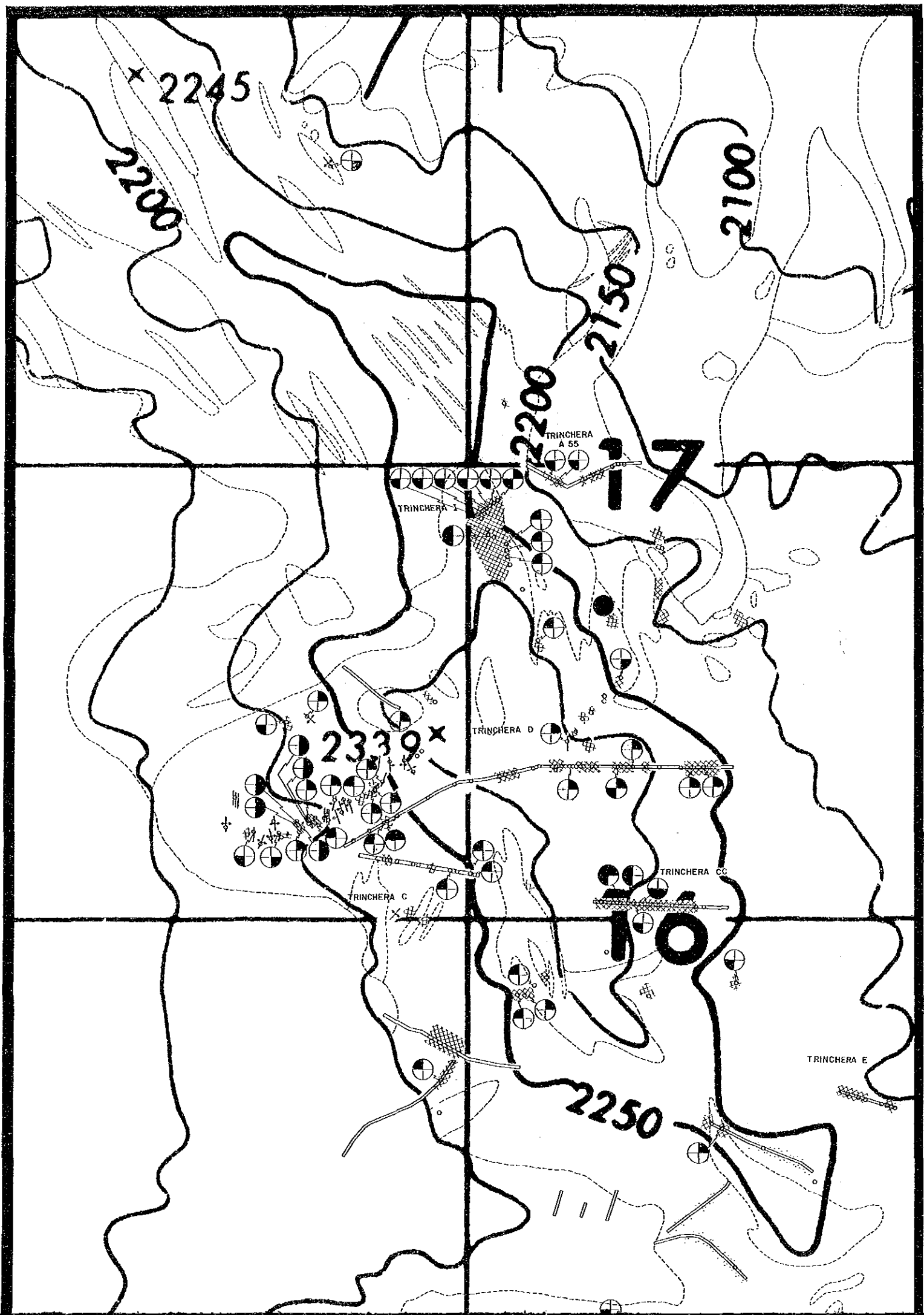


LEYENDA

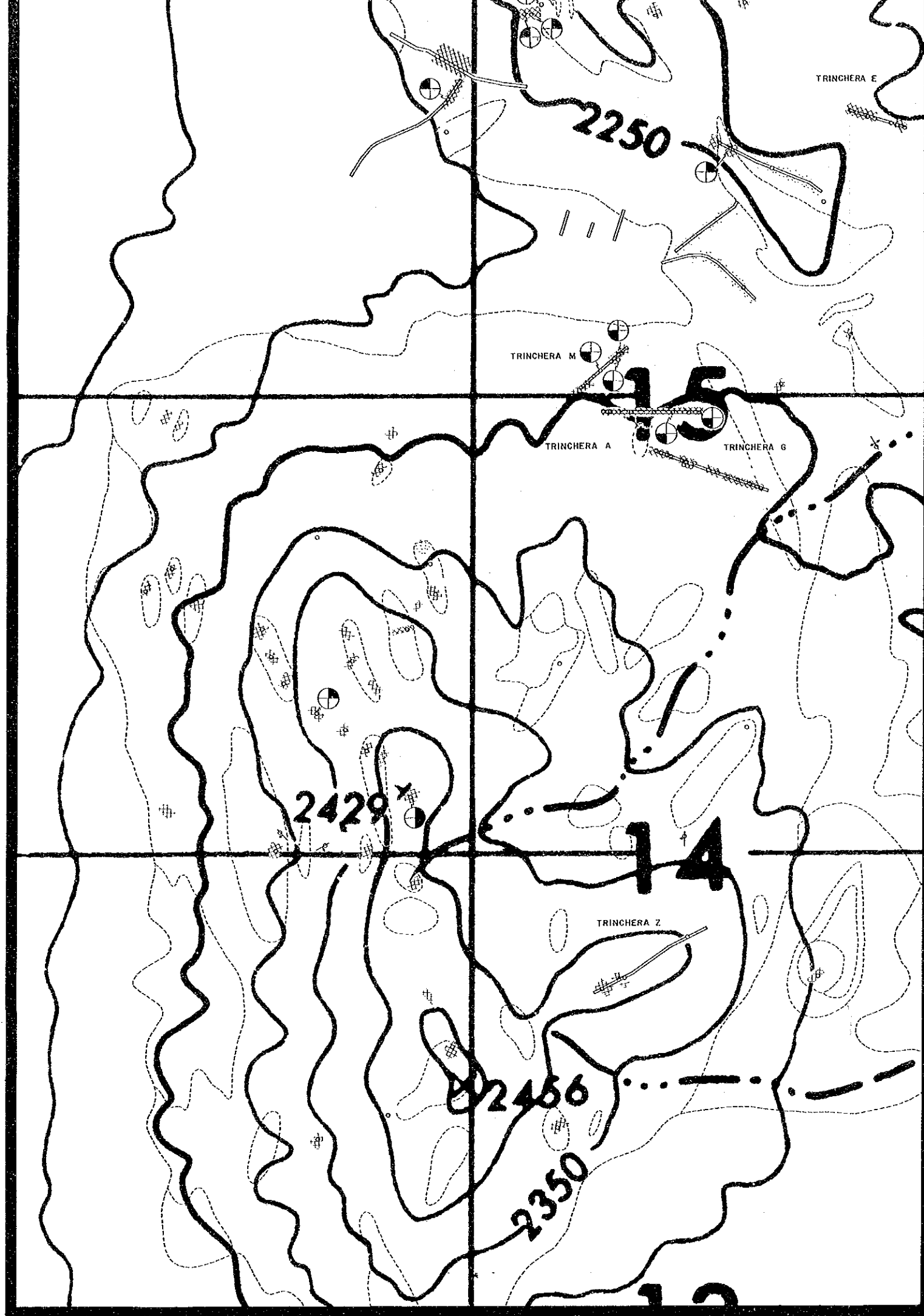


Anomalia
Ubicacion de muestra
Veta





- LEVENDA
- As Au
Cu Ag
 - Anomalia
 - Ubicacion de muestra
 - Veillas tipo "network"
 - Veilla de rumbo preferencial
 - Impregnacion de limonita
 - Trinchera



S I E R R A

2416^x

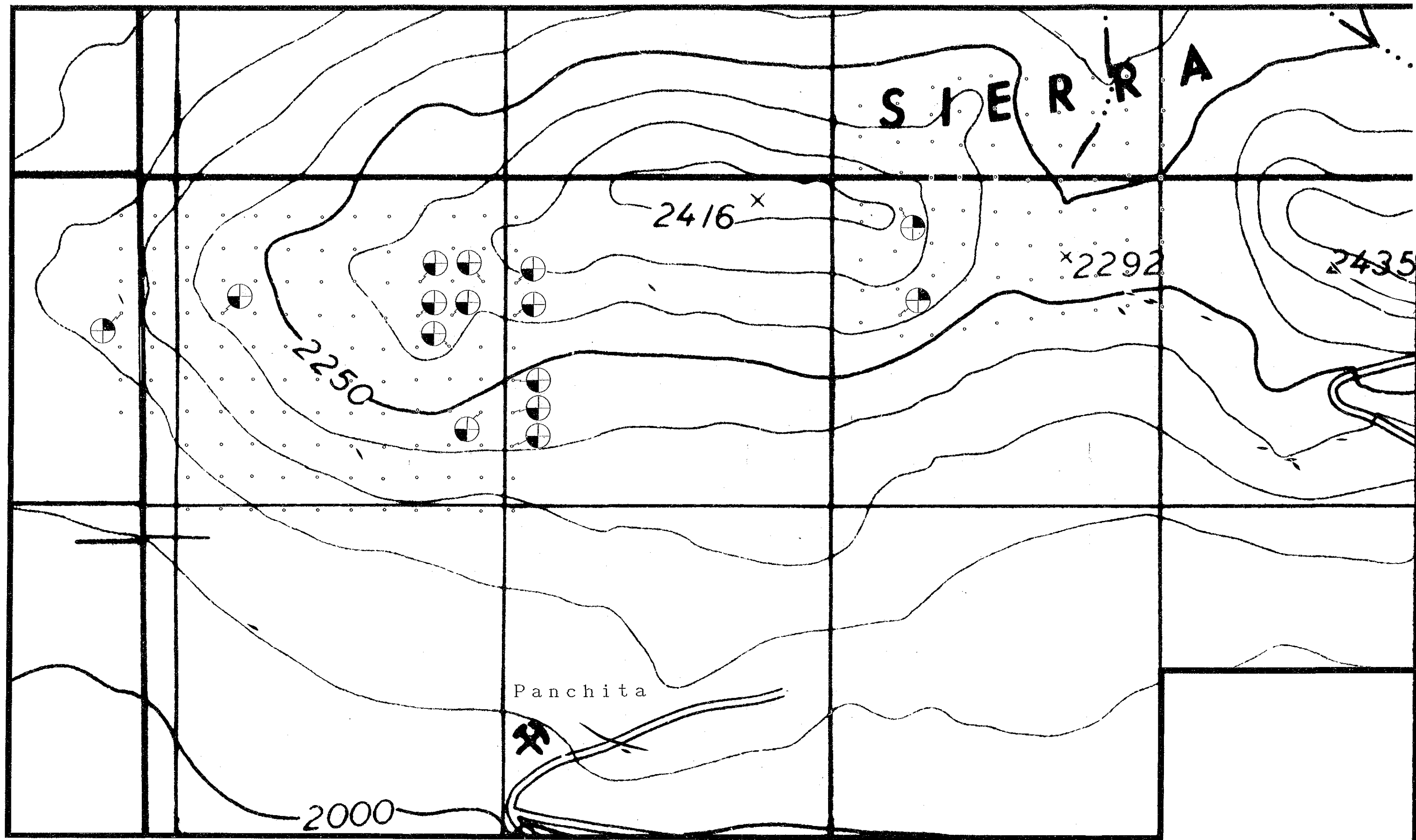
x2292

2435

2250

2000

Panchita

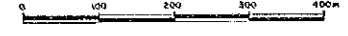


16205
圖名: 16205
圖號: 16205

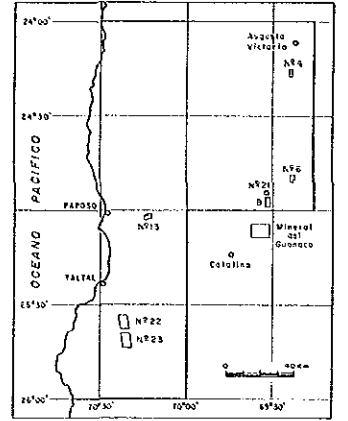
PL. 32
ESTUDIO GEOLOGICO DE EXPLORACION MINERA
AL SUR DE ANTOFAGASTA EN LA REPUBLICA DE CHILE

MAPA DE ANOMALIAS GEOQUIMICAS
AREA No. 13

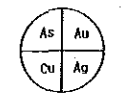
Escala 1:5,000



MAPA DE UBICACION



LEYENDA



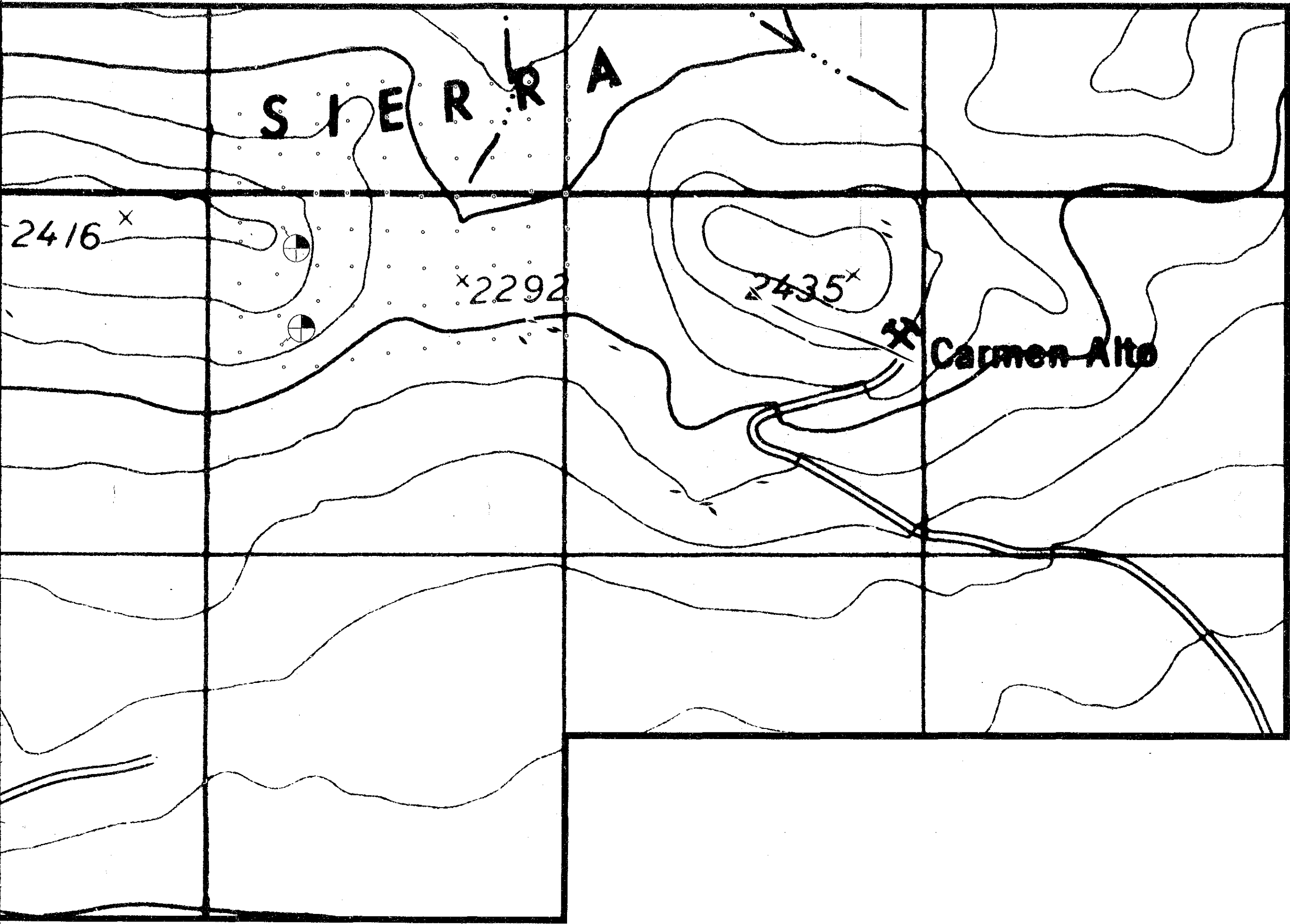
Anomalia

o

Ubicacion de muestra

/

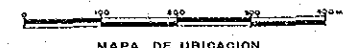
Veta



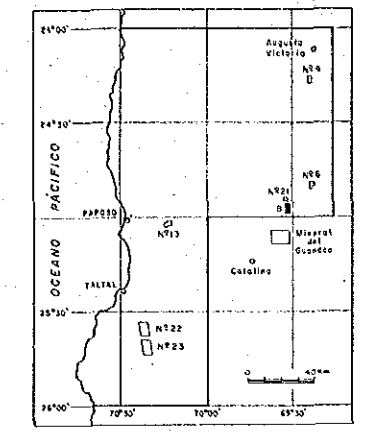
ESTUDIO GEOLOGICO DE EXPLORACION MINERA
AL SUR DE ANTOFAGASTA EN LA REPUBLICA DE CHILE
MAPA GEOLOGICO Y PLANO DE
UBICACION DE SONDAJE

AREA B

ESCALA 1:10000

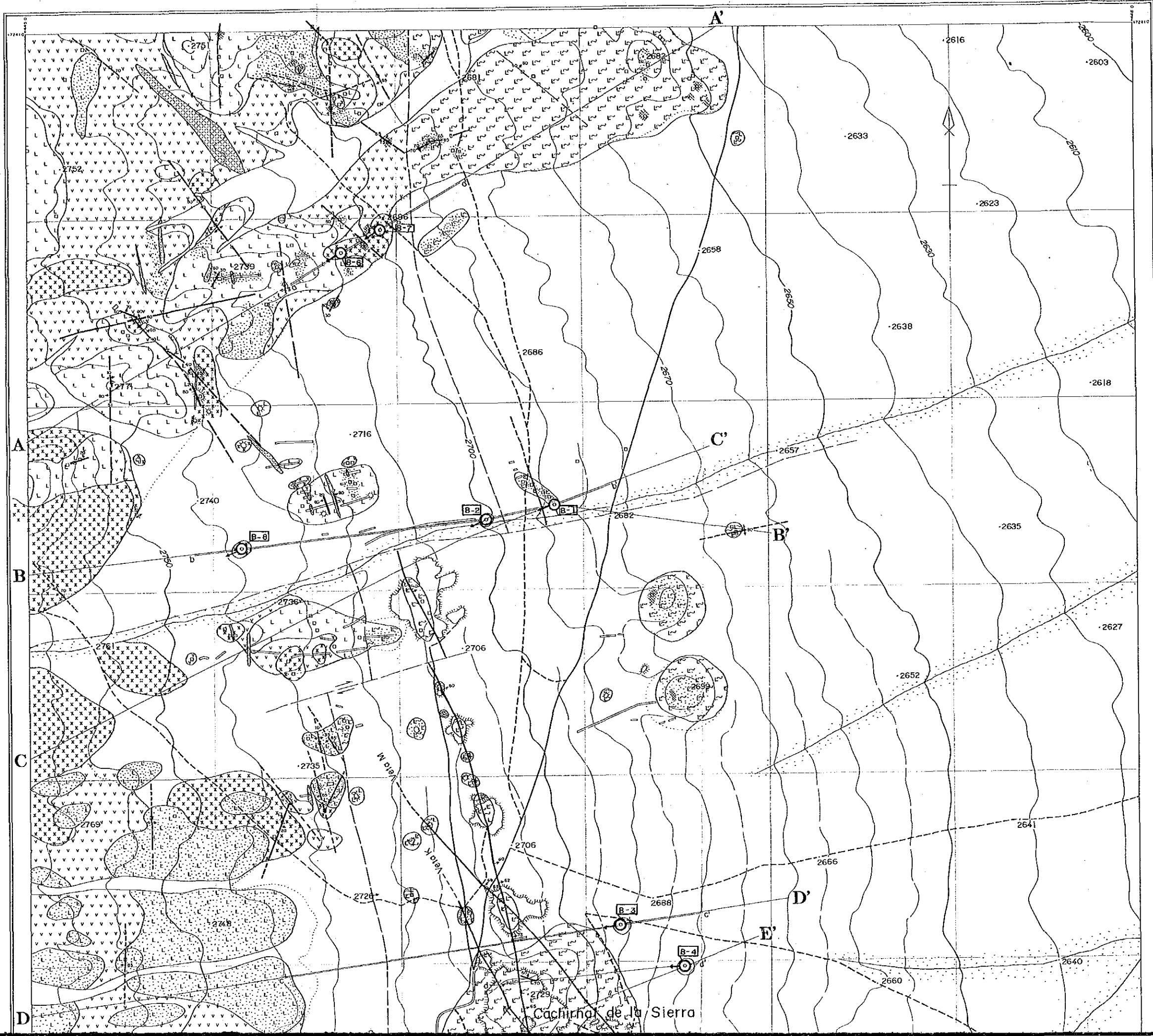


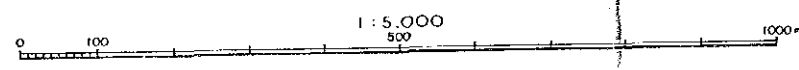
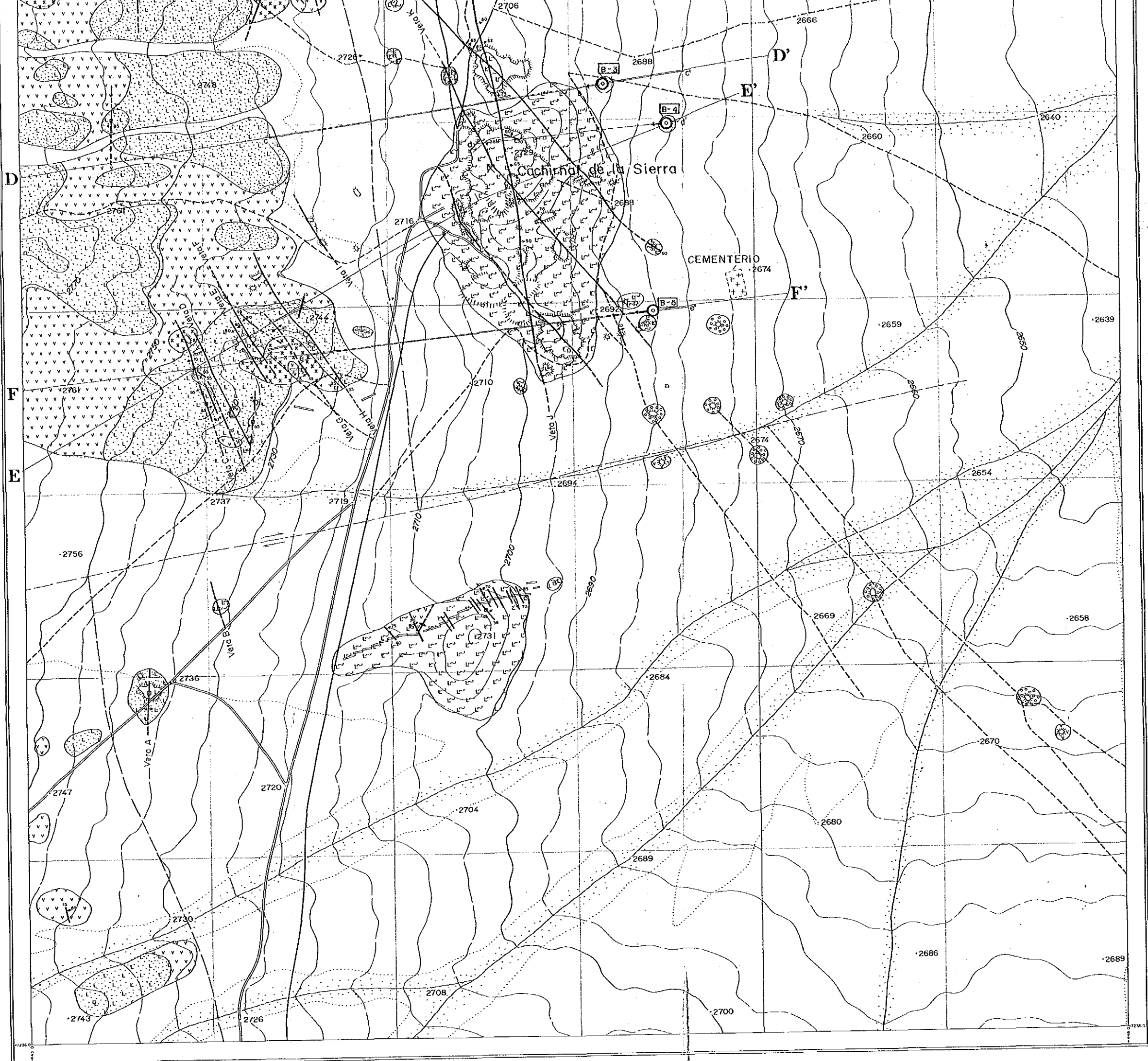
MAPA DE UBICACION



LEYENDA

- Depósitos aluviales (arenas y gravas)
- Sedimentos aluviales (conglomerado)
- Diques aluviales
- Tobs soldados dacíticos, de lapilli dacítico y de pompees dacíticos
- Lavas dacíticas
- Areniscas tobáceas rojizas, conglomerados tobáceos rojizos, tobas de lapilli dacíticos rojizos, y brechas tobáceas dacíticas rojizas
- Dioritas
- Andesitas verdes oscuras
- Silicificación y argilización medias
- Vetas
- Stockworks de cuarzo
- Fallas observadas
- Fallas inferidas
- Piques
- Trincheros
- Sonda





16205

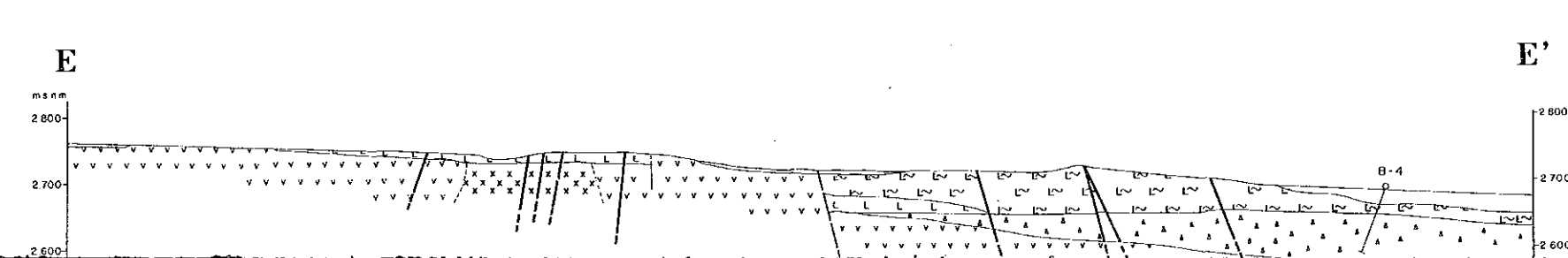
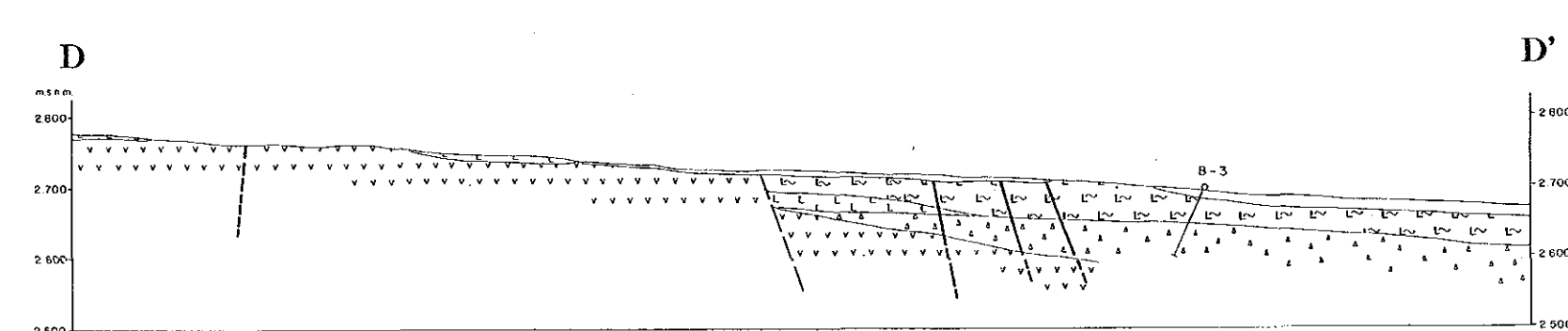
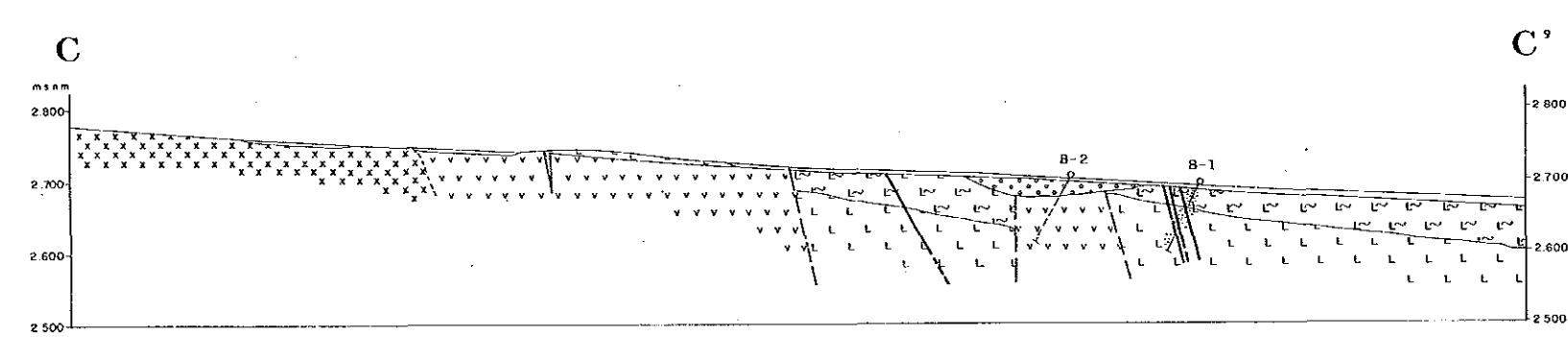
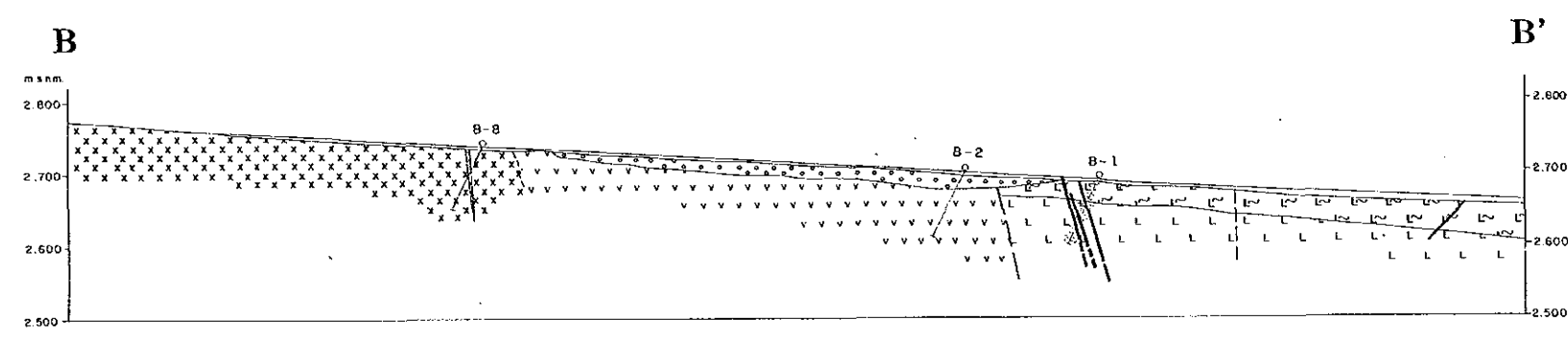
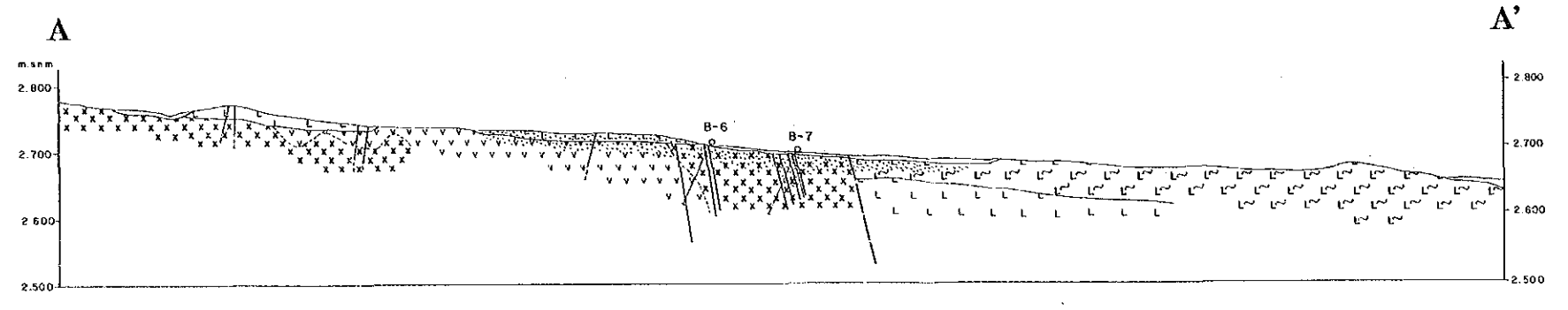
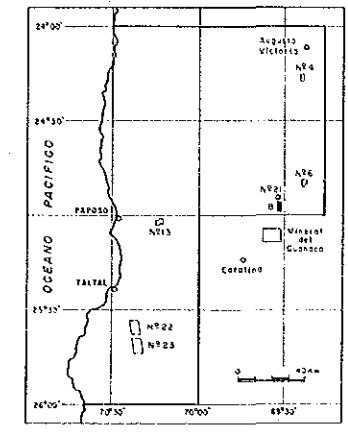
PL. 34

ESTUDIO GEOLOGICO DE EXPLORACION MINERA
AL SUR DE ANTOFAGASTA EN LA REPUBLICA DE CHILE

PLANO DE PERFILES GEOLOGICOS
AREA B

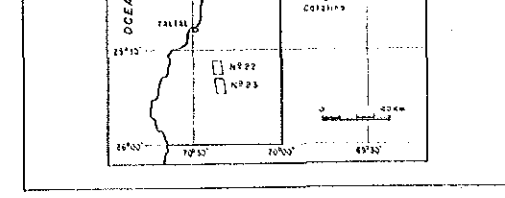
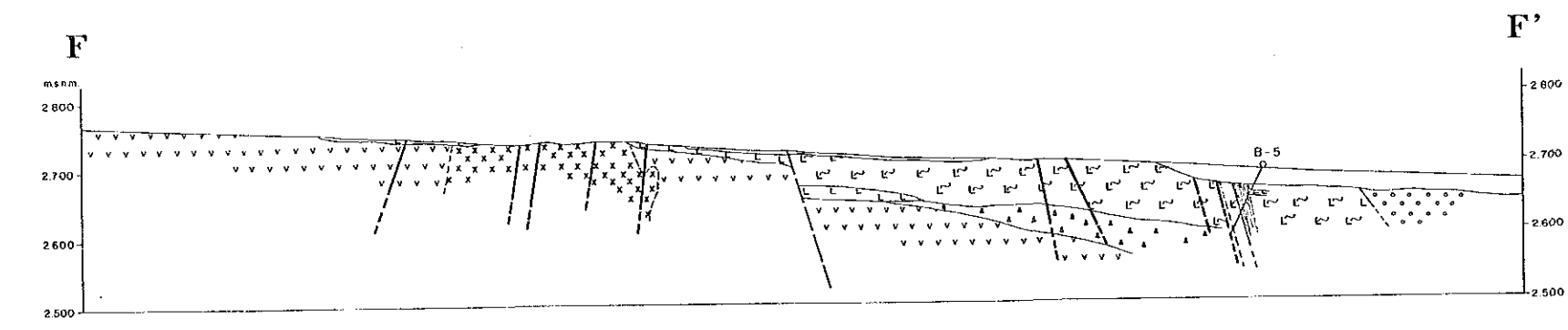
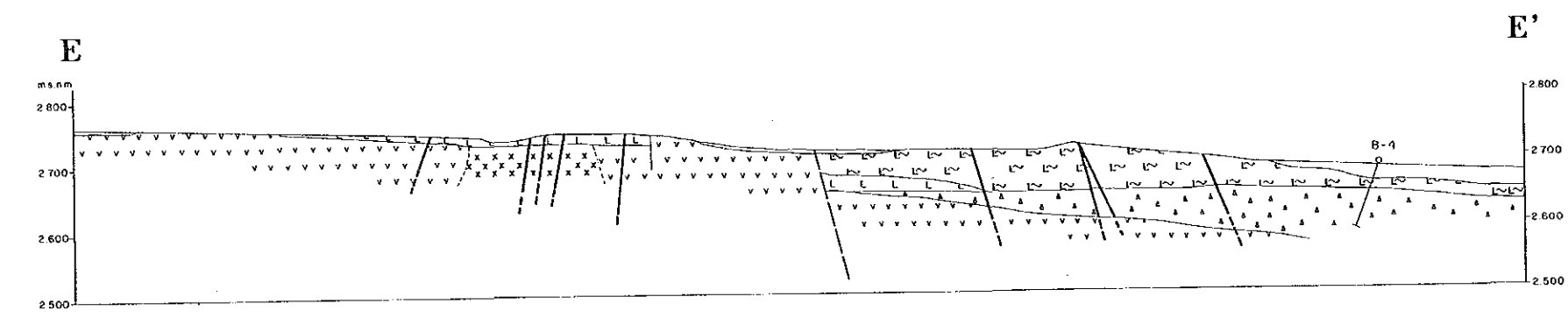
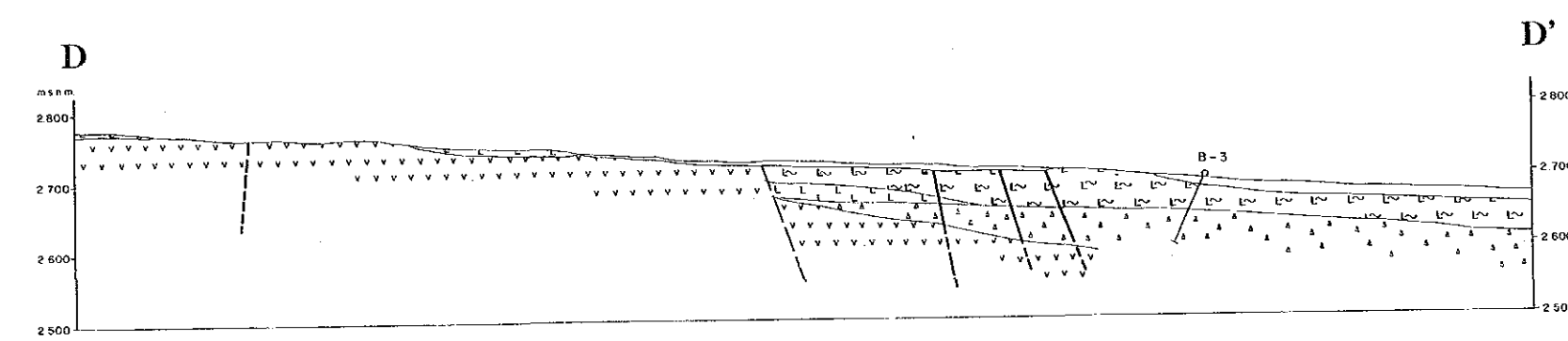
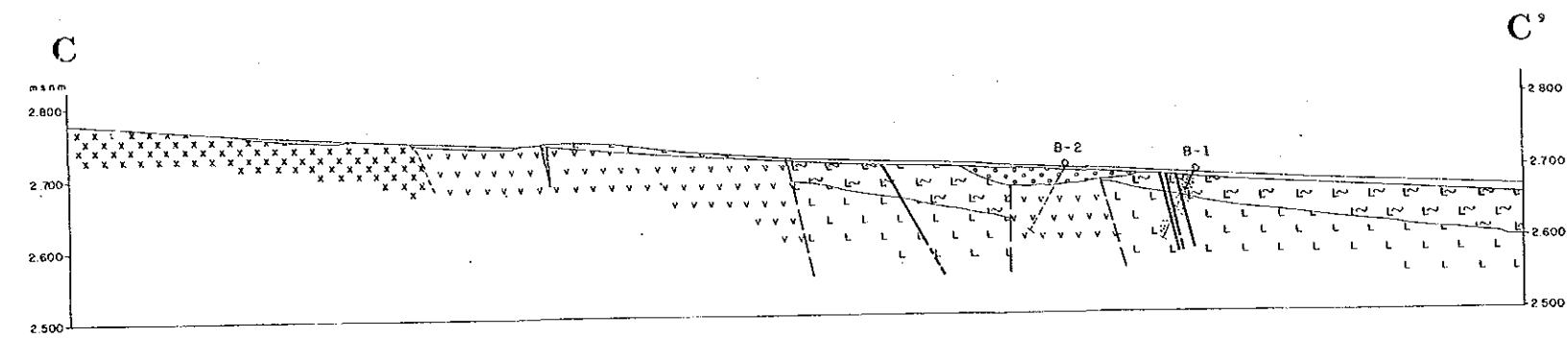
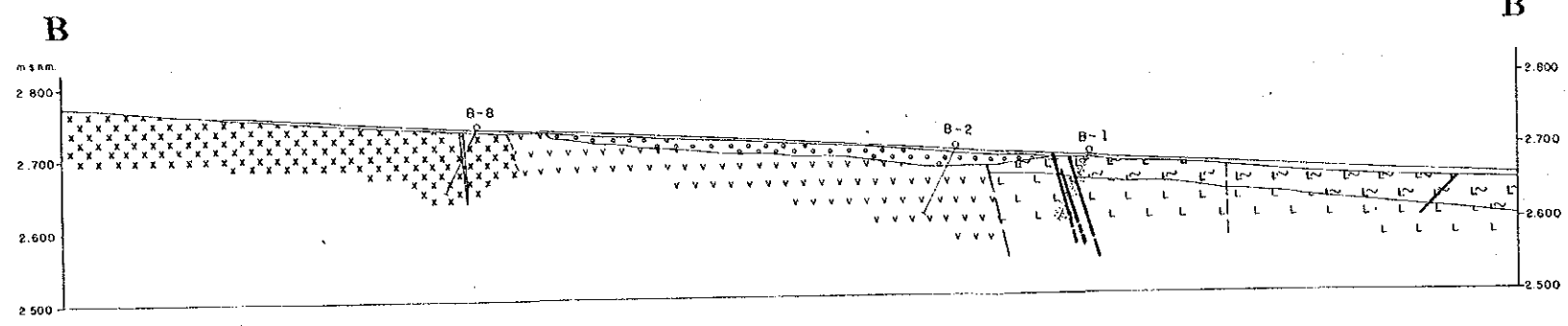
ESCALA 1:5.000

MAPA DE UBICACION



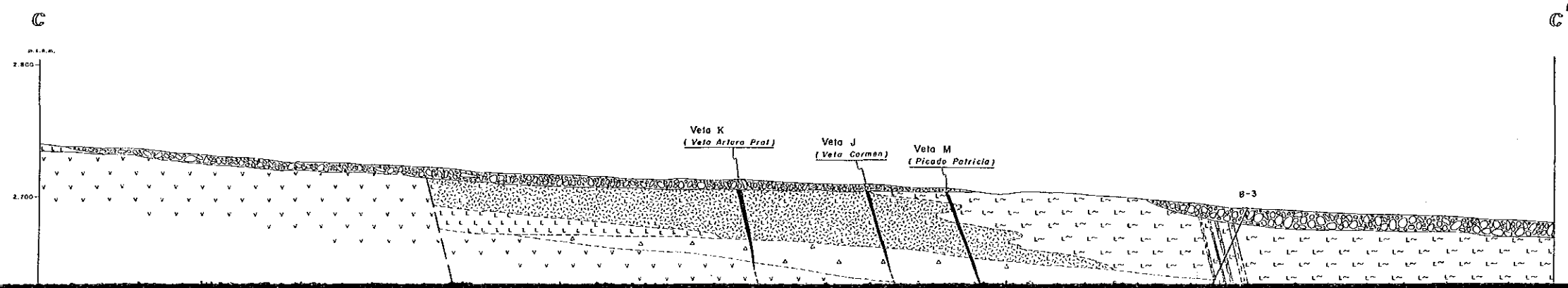
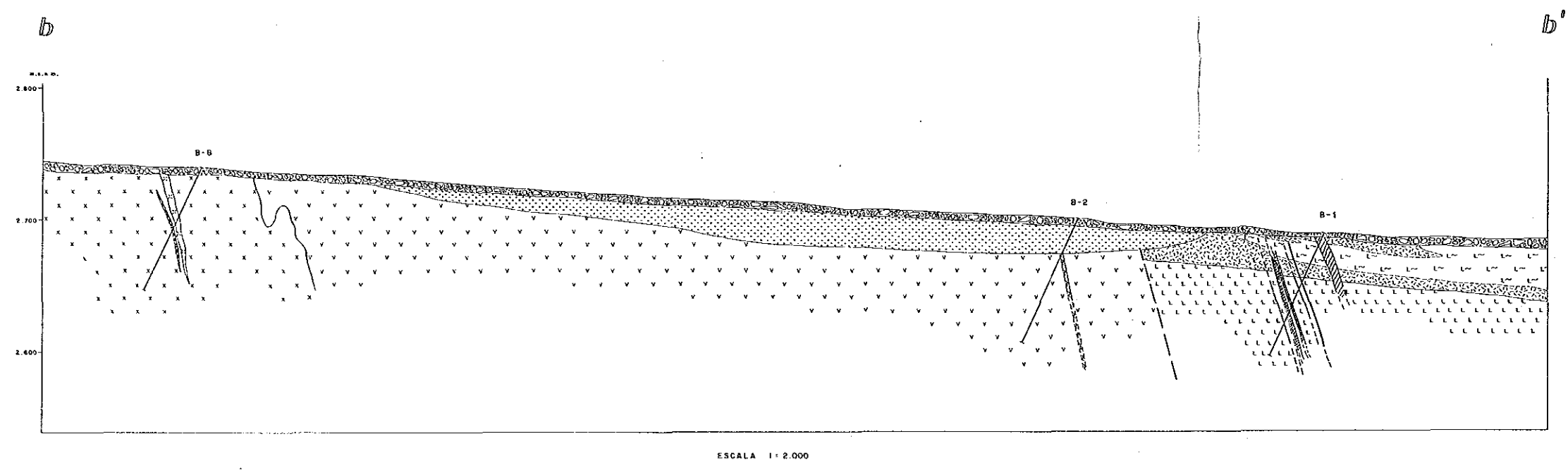
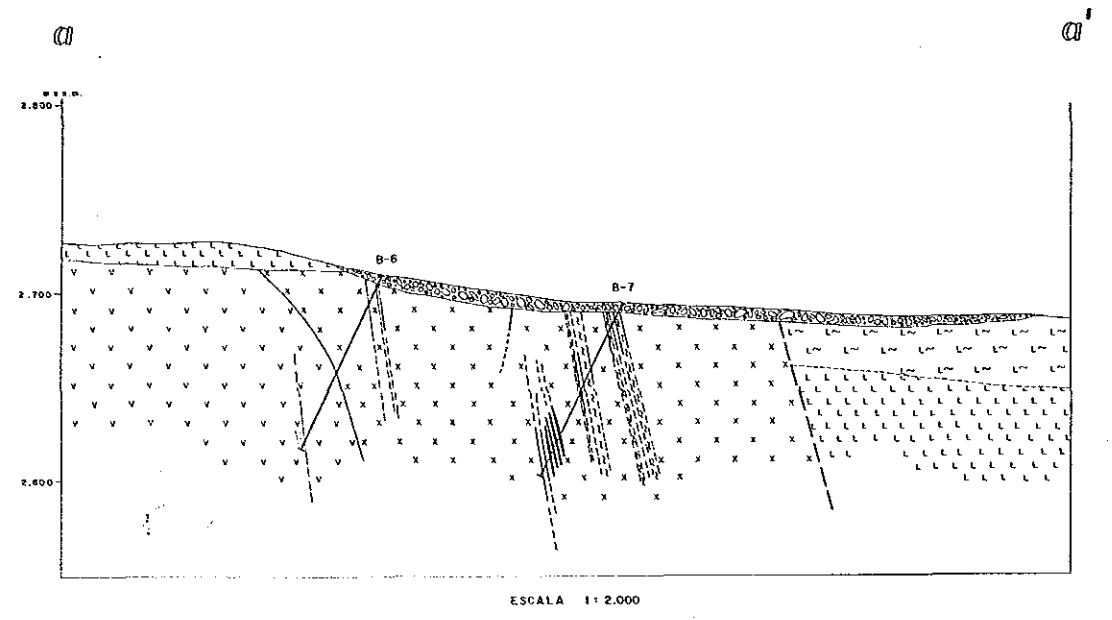
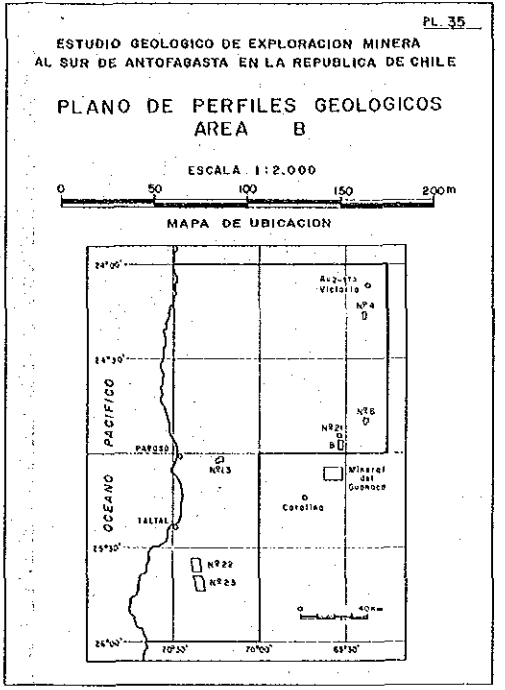
LEYENDA

- Depósitos coluviales (arenas y gravas)
- Sedimentos aluviales (conglomerado)
- Diques riolíticos
- Tobos soldados dacíticos, de la pilla dacítica y de pomices dacíticos
- Lavas dacíticas
- Areniscas tobáceas rojizas, conglomerados tobáceos rojizos, tobos de lapilli dacíticos rojizos, y brechas tobáceas dacíticas rojizas
- Dioritos
- Andesitas verdes oscuras
- Silicificación y argilización medias
- Venas
- Stockworks de cuarzo
- Zona de cizalle
- Fallas observadas
- Fallas inferidas
- Piques
- Trincheras
- Sondaje



LEYENDA

- Depósitos coluviales (arenas y gravas)
- Sedimentos aluviales (conglomerado)
- Diques dioríticos
- Tobs soldadas dacíticas, de lapilli dacítico y de pomaces dacíticos
- Lavas dacíticas
- Areniscas tobáceas rojizas, conglomerados tobáceos rojizos, tobas de lapilli dacíticos rojizos, y brechas tobáceas dacíticas rojizas
- Dioritas
- Andesitas verdes oscuras
- Silicificación y argilización medias
- Venas
- Stockworks de cuarzo
- Zona de cizalle
- Fallas observadas
- Fallas inferidas
- Piques
- Trincheras
- Borehole B-1 Sondaje



LEYENDA

- Depositos coluviales (arenas y gravas)
- Sedimentos aluviales (conglomerado)
- Tobas soldadas daciticas
- Tobas de pomices daciticos
- Lavas daciticas
- Rocas piroclasticas daciticas de color rojo
- Areniscas y conglomerados tobaceos
- Andesitas verdes oscuros
- Dioritas
- Veta
- Veta tipo "network"
- Falla
- Zona de cizalla
- Zona de fractura
- Sondaje

