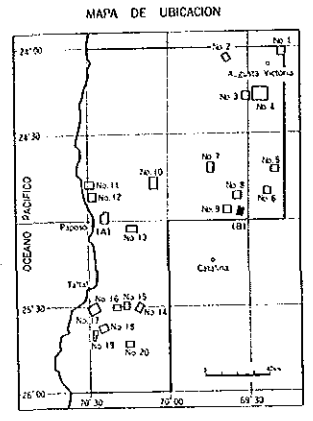


PL. 2-2(2)
ESTUDIO GEOLOGICO DE EXPLORACION MINERA
AL SUR DE ANTOFAGASTA EN LA REPUBLICA DE CHILE

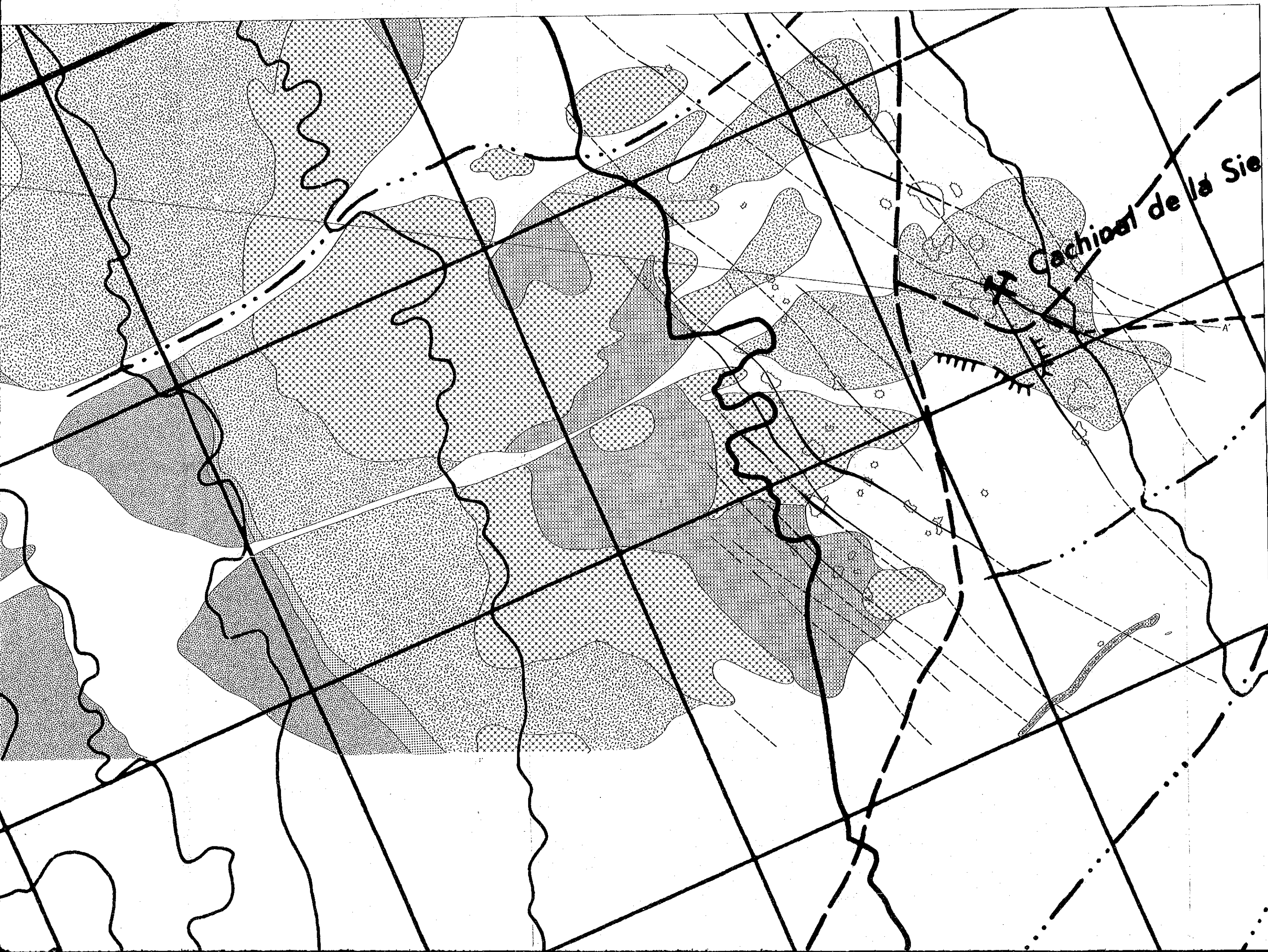
MAPA GEOLOGICO
AREA(B)

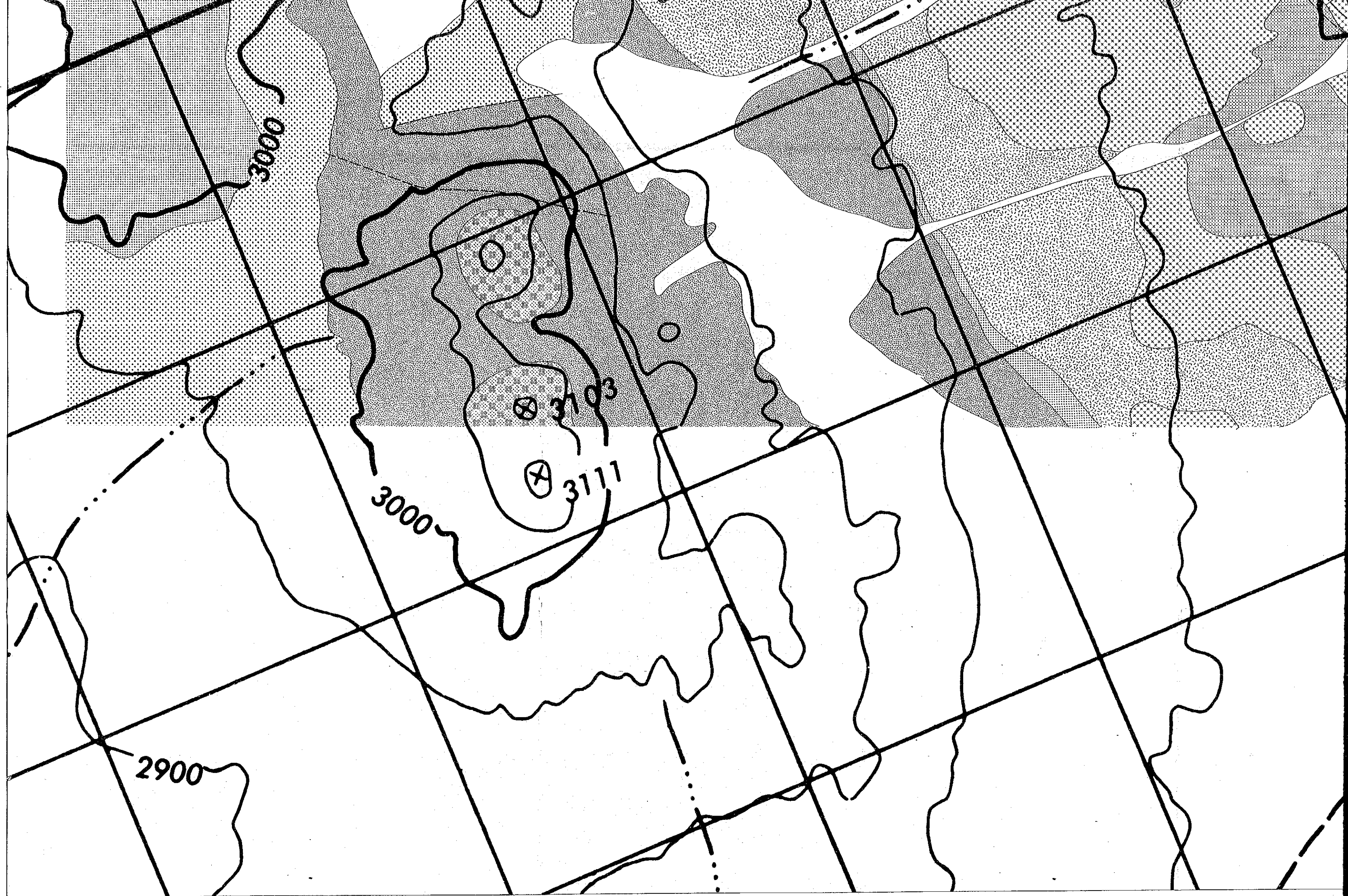
ESCALA 1 : 5,000
0 100 200 300 400m

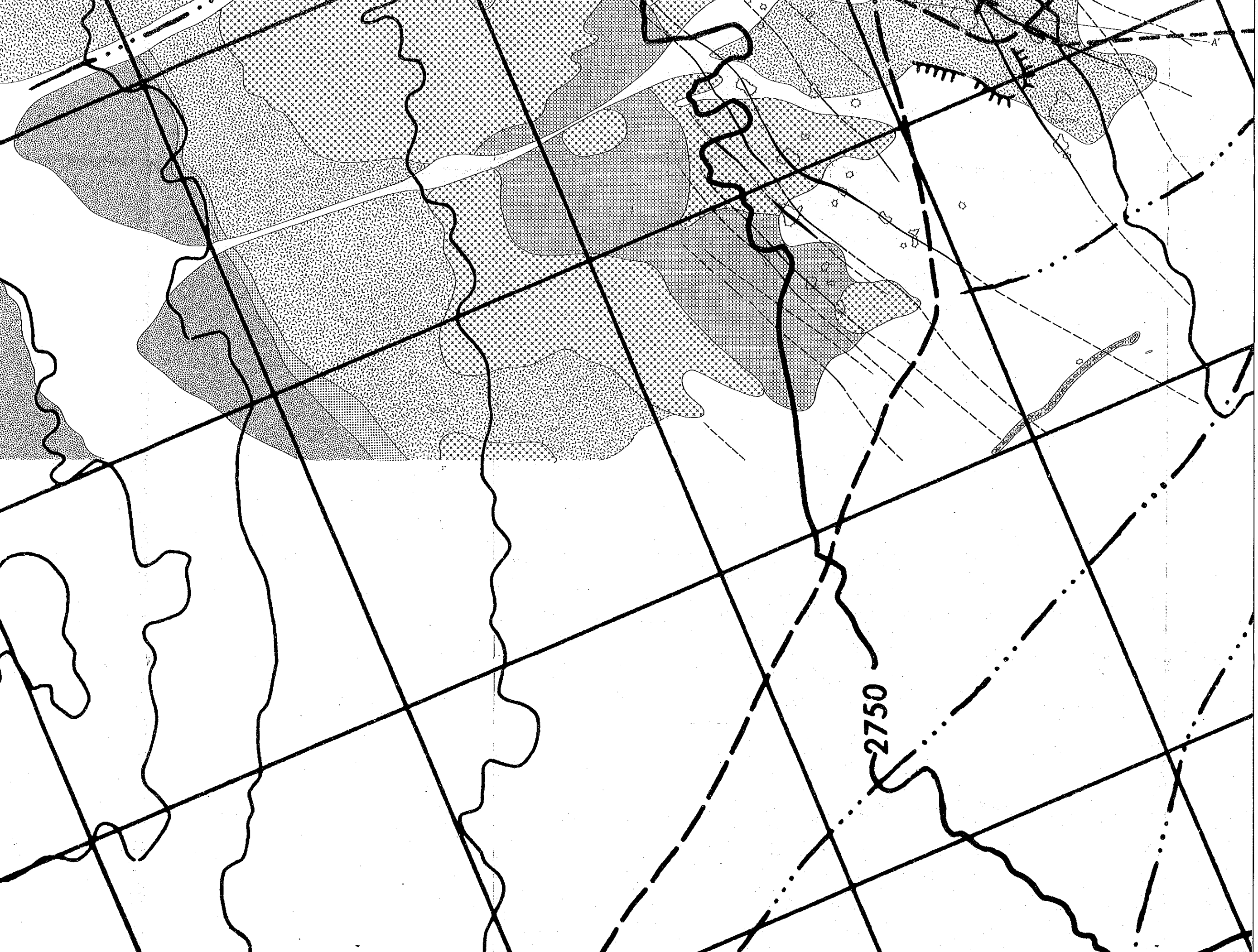


LEGENDA

- Aluvio y coluvio
- Lava andesítica de tipo plateau
- Andesita afanítica
- Toba dacítica y solotada
- Andesita de piroxeno
- Toba brechosa andesítica y de lapilli
- Pórfido dacítico de tipo domo
- Porfido cuarífero
- Diorita
- Rumbo y manleo
- Falla observada
- Falla inferida
- Veta
- Rajo y desmonte
- Pique
- Trinchera
- Ubicación de estaca



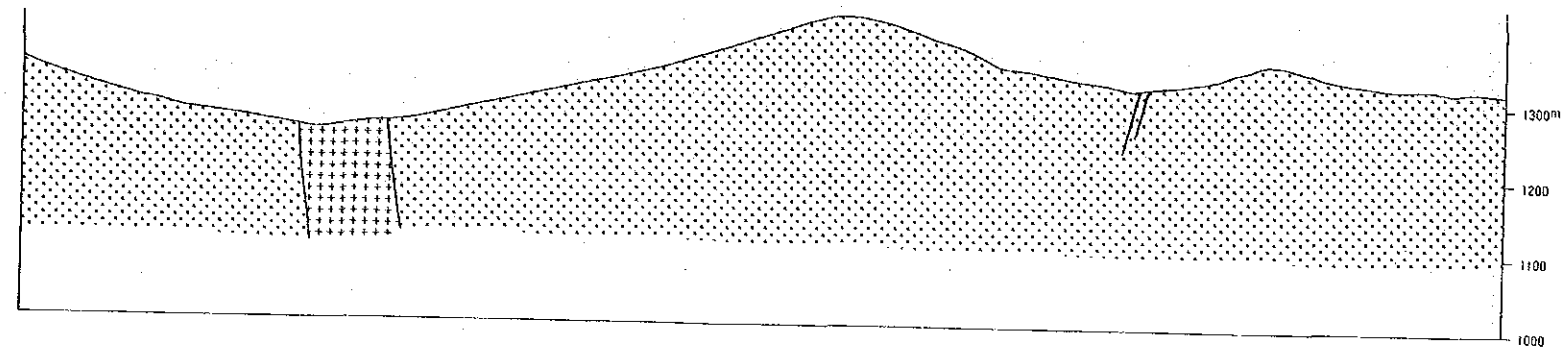




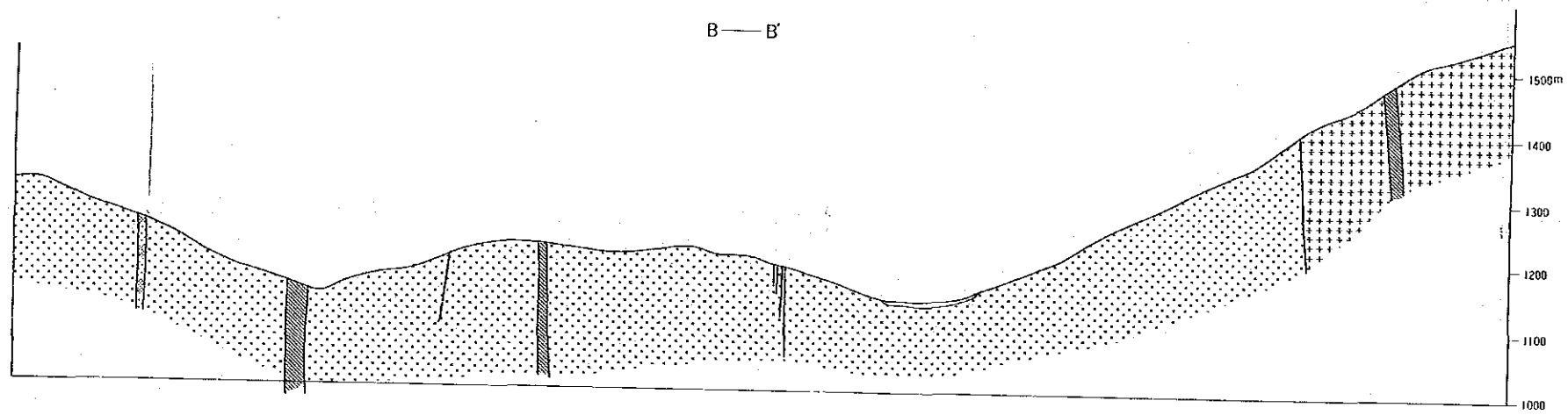
- LEGENDA
- Aluvio y coluvio
 - Lava andesítica de tipo plateau
 - Andesita afanítica
 - Toba dacítica y soldada
 - Andesita de piroxeno
 - Toba brechosa andesítica y de lapilli
 - Pórvido dacítico de tipo domo
 - Porfido cuarífero
 - Diorita
 - Rumbo y manto
 - Falla observada
 - Falla inferida
 - Veta
 - Rajo y desmonte
 - Pique
 - Trinchera
 - Ubicación de estaca

2750

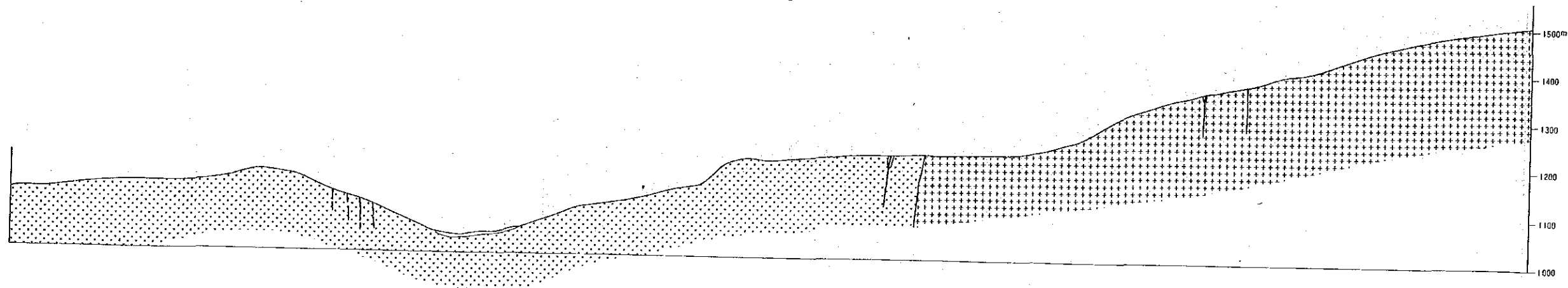
A—A'



B—B'



C—C'

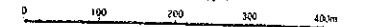


ESTUDIO GEOLOGICO DE EXPLORACION MINERA
AL SUR DE ANTOFAGASTA EN LA REPUBLICA DE CHILE 1977

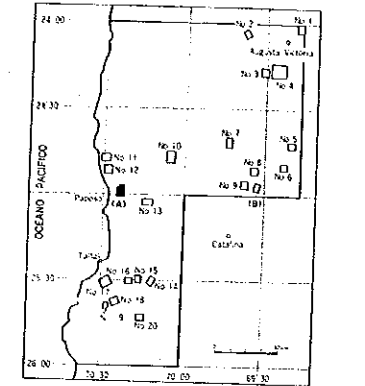
PL. 3-3
地质部地质研究所
1977年

MAPA DE PERFIL GEOLOGICO
AREA(A)

ESCALA 1 : 5,000

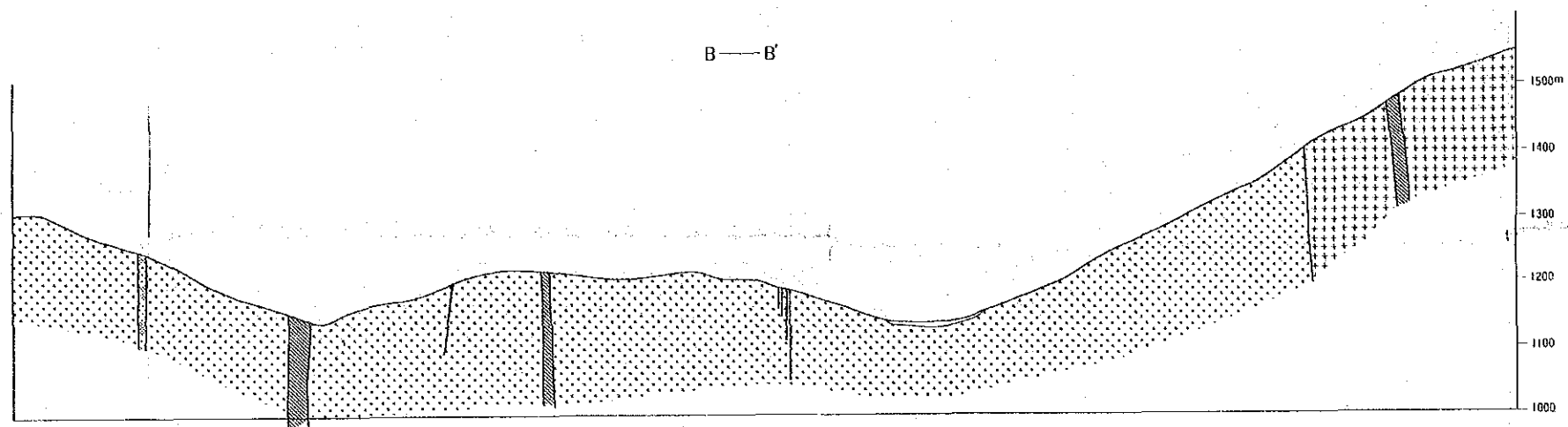
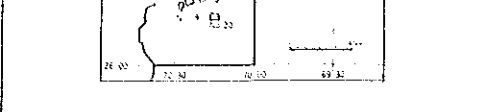


MAPA DE UBICACION

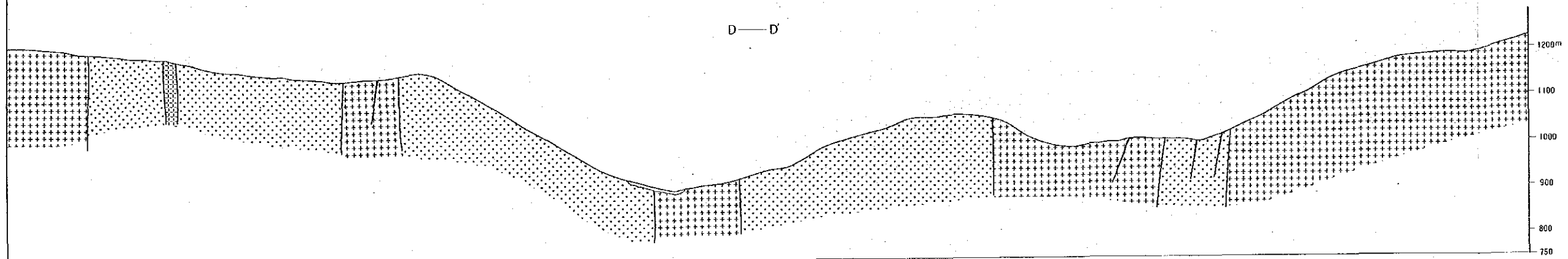
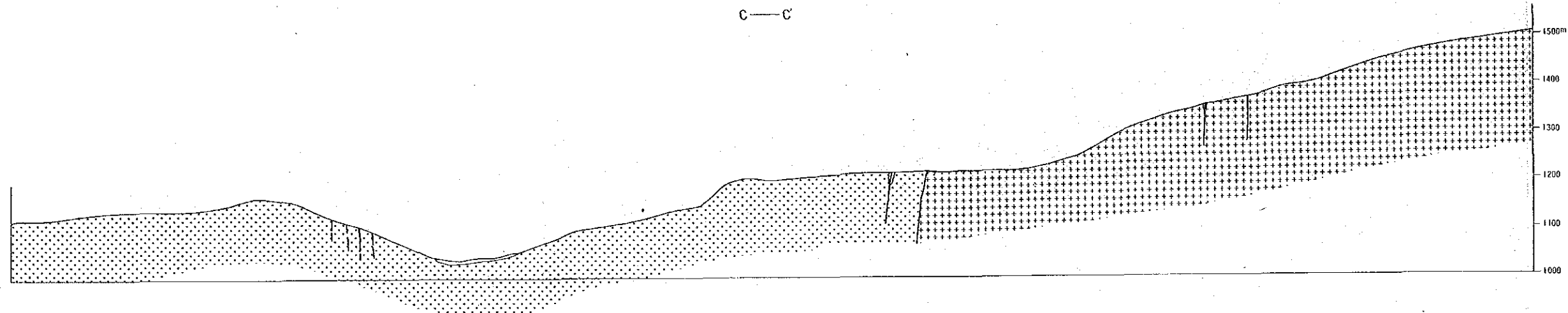


LEYENDA

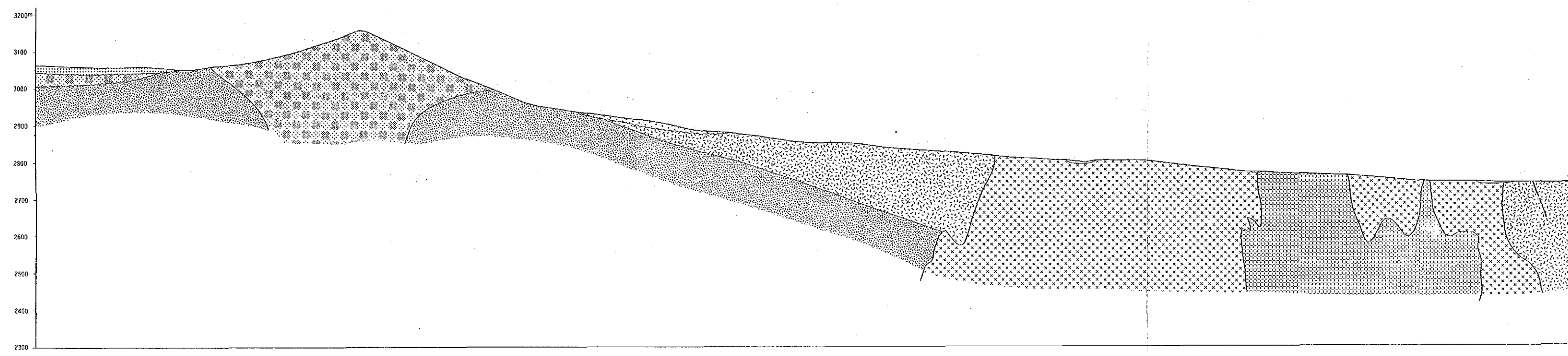
- Arena y grava
- Monzonita cuarcifera
- Diorita
- Dique Dacita porfídica
- Dique Andesítico
- Dique Aplítico
- Pique
- Veta



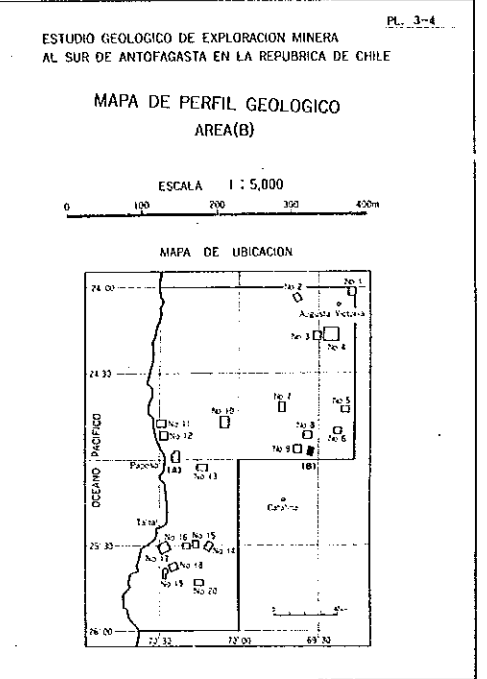
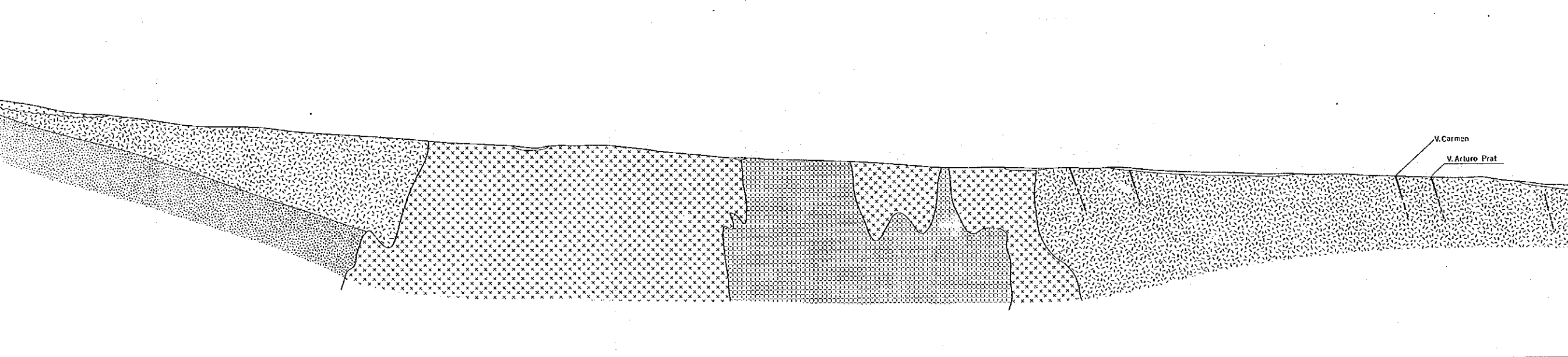
- LEYENDA**
- Arena y grava
 - Monzonita cuarcifera
 - Diorita
 - Dique Dacita porfídica
 - Dique Andesítico
 - Dique Aplítico
 - Pique
 - Veta




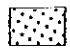





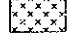

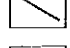


A—A'

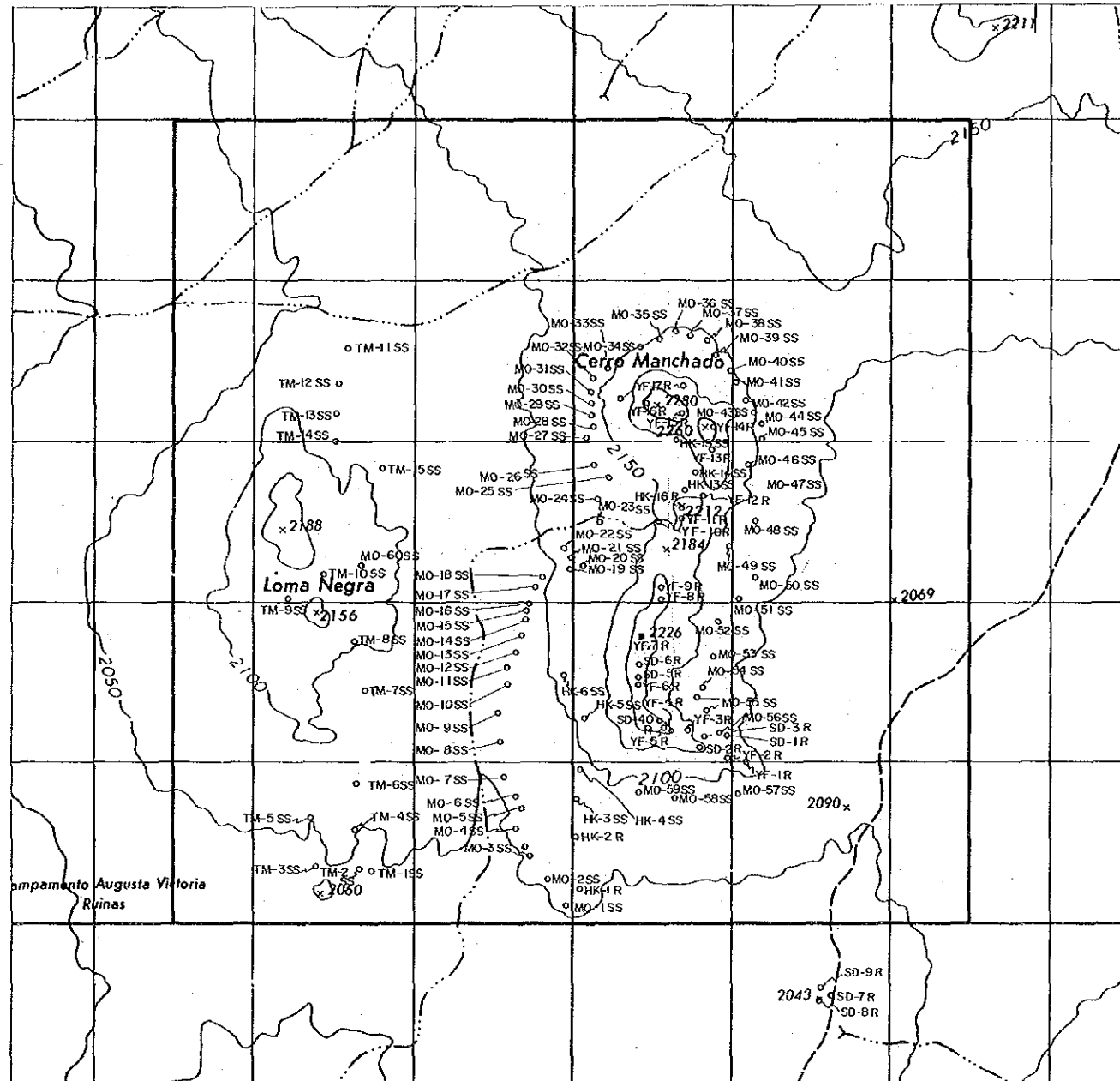


A—A'



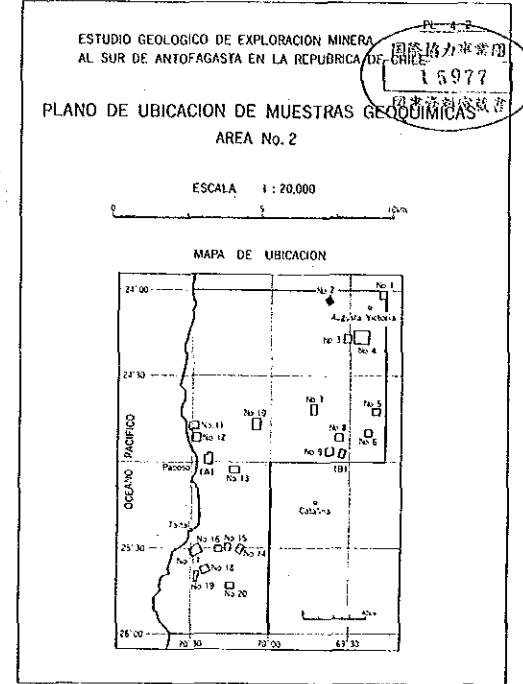
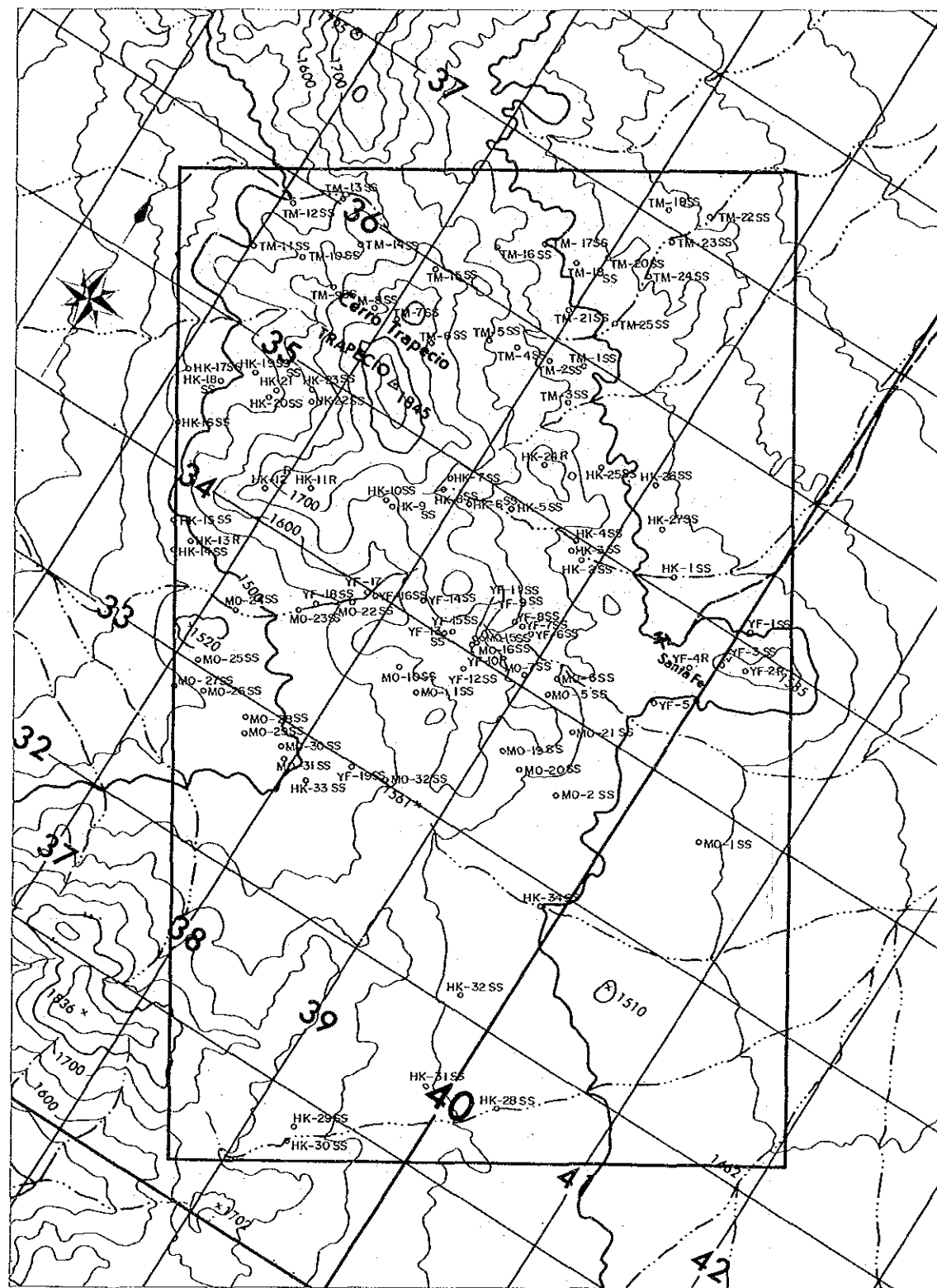
LEGENDA

- Aluvio y coluvio
-  Lava andesitica de tipo plateau
-  Andesita afanitica
-  Toba dacitica y soldada
-  Andesita de piroxeno
-  Toba brechosa andesitica y de lapilli
-  Párfido dacitico de tipo domo
-  Párfido cuarçifero
-  Diorita
-  Rumbo y manto
-  Falla observada
-  Falla inferida
-  Veta



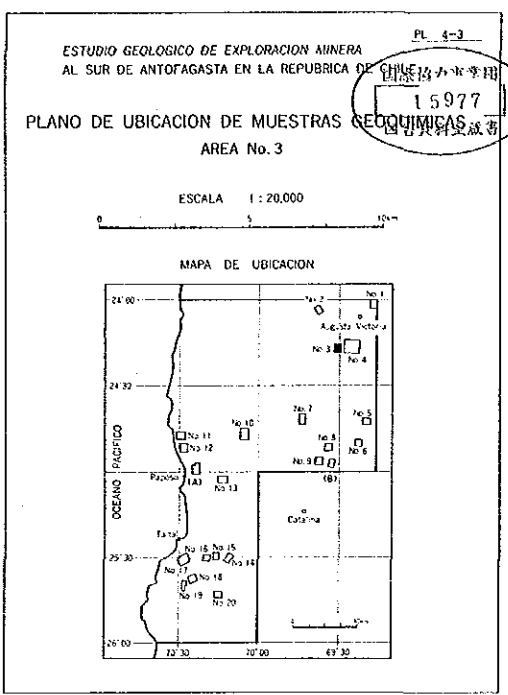
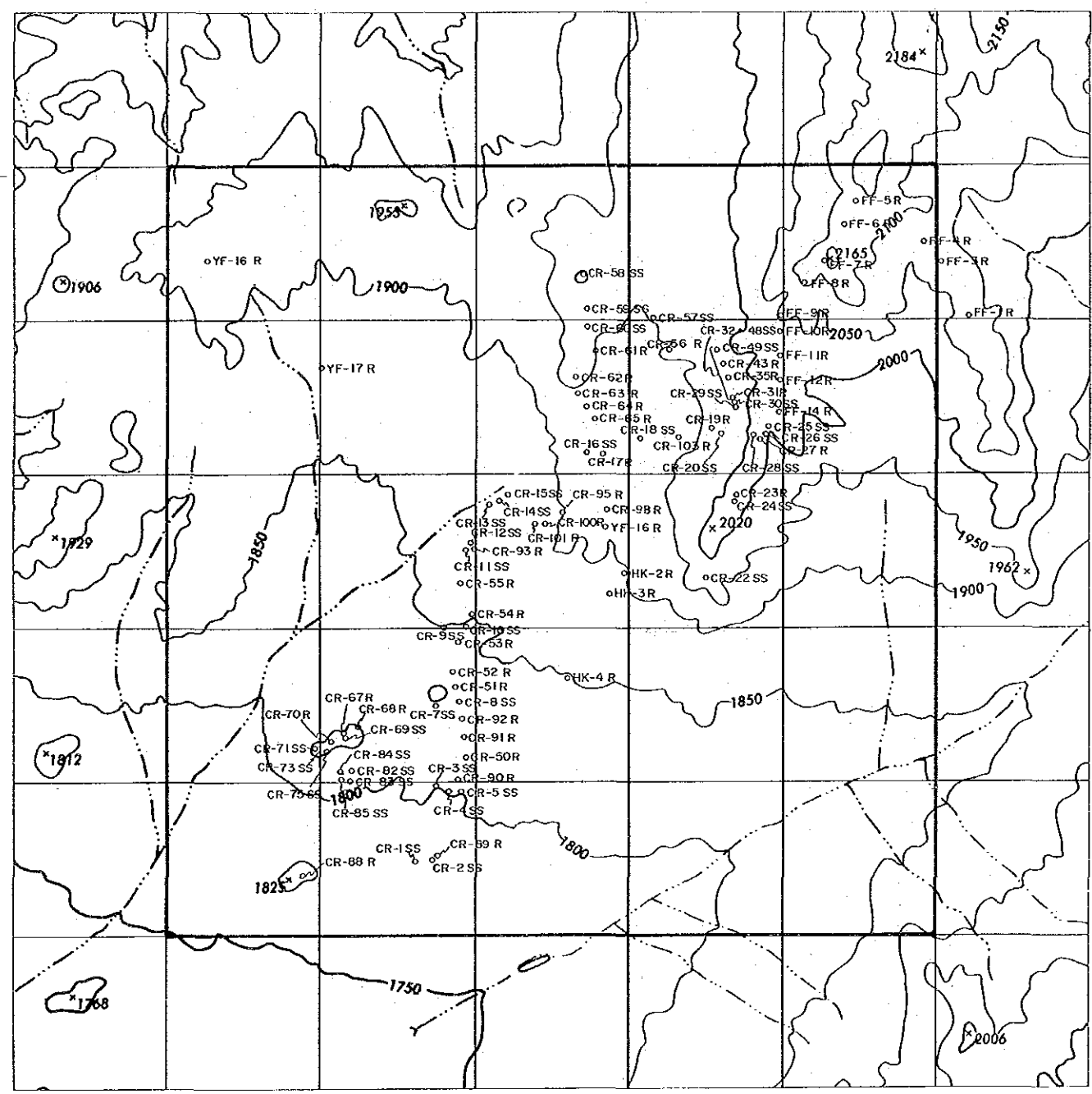
LEYENDA

- TM-1 Ubicación de muestra
- S : Suelo
- SS : Sedimentos de corriente
- R : Roca



- LEYENDA
- TM-1 Ubicación de muestra
 - S : Suelo
 - SS : Sedimentos de corriente
 - R : Roca

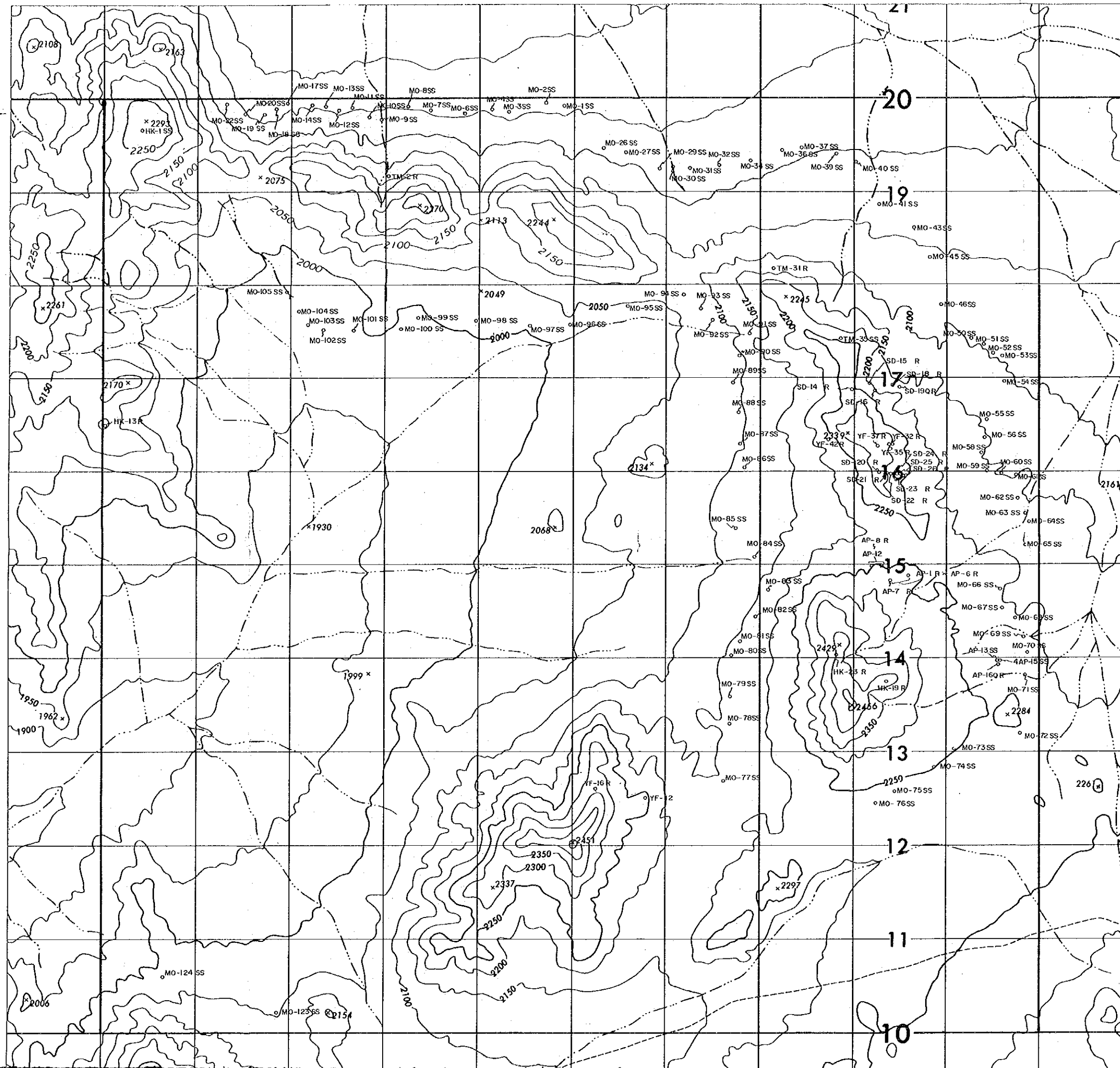




LEYENDA

- JM-1 Ubicación de muestra
- S : Suelo
- SS : Sedimentos de corriente
- R : Roca

PL 4-3
15977



ESTUDIO GEOLOGICO DE EXPLORACION MINERA
AL SUR DE ANTOFAGASTA EN LA REPUBLICA DE CHILE
15977

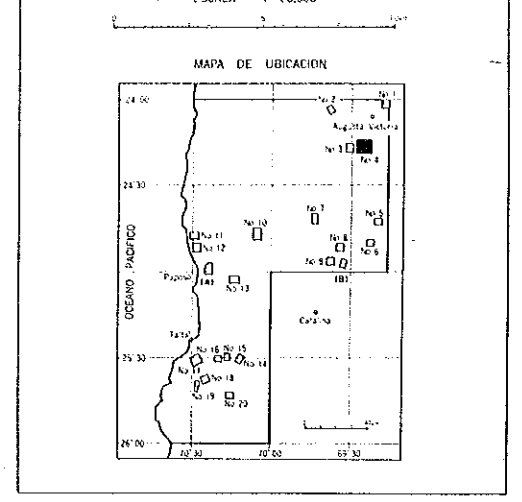
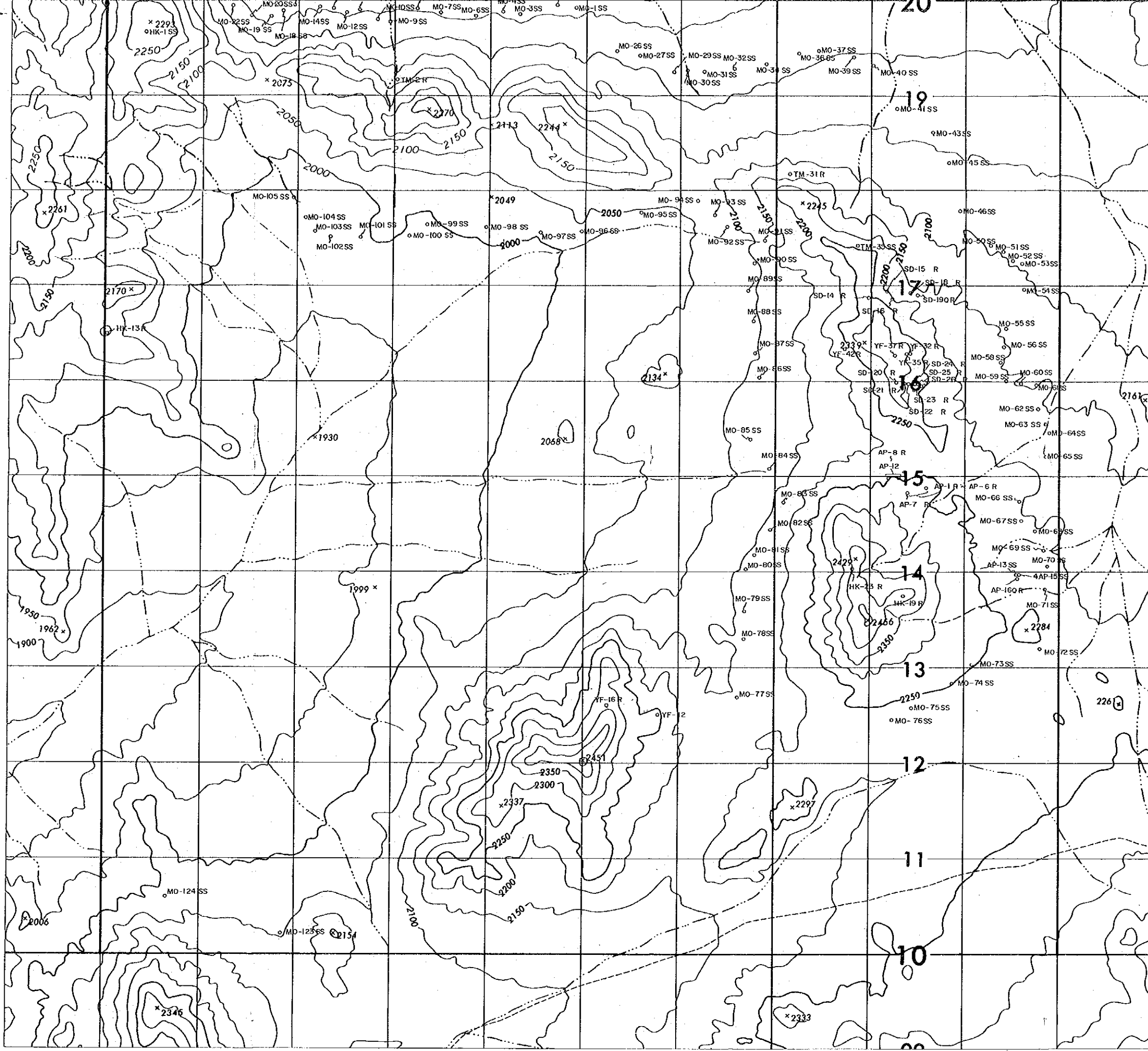
PLANO DE UBICACION DE MUESTRAS GEOQUIMICAS
AREA No. 4

ESCALA 1 : 20,000

MAPA DE UBICACION

LEYENDA

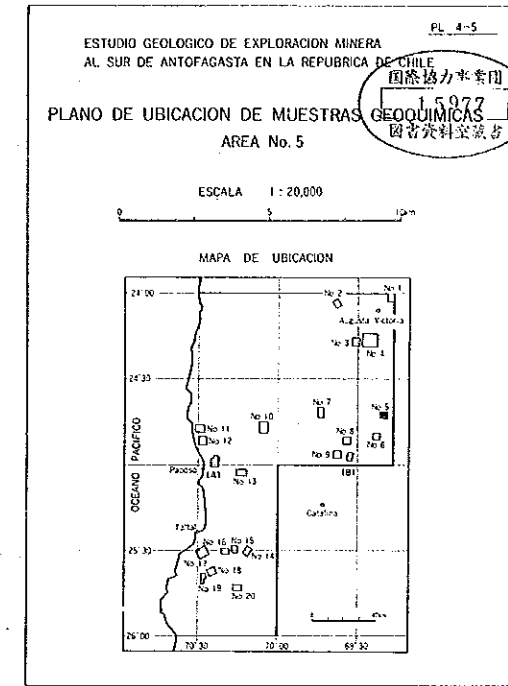
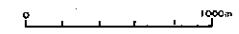
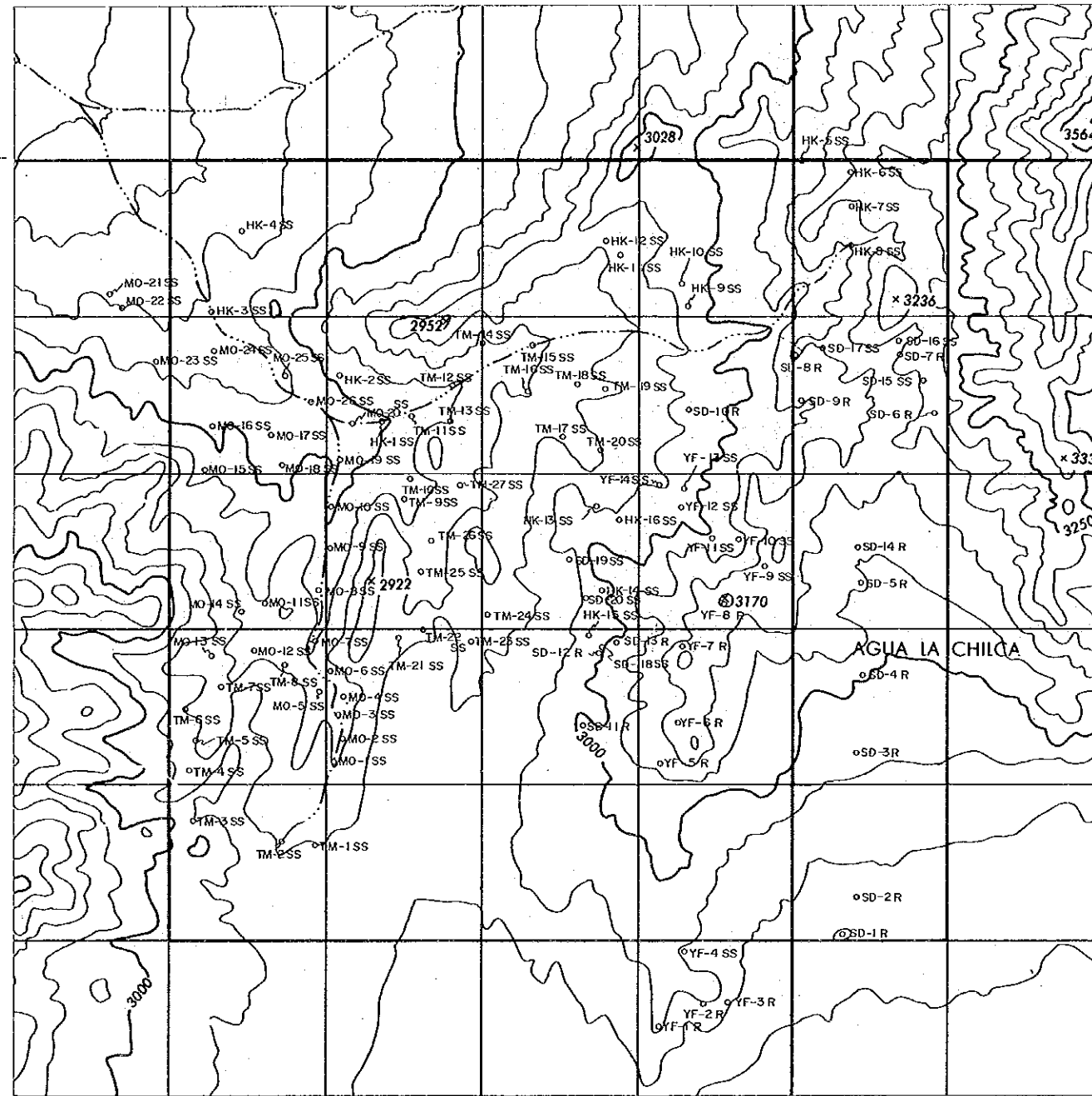
- TM-1 Ubicacion de muestra
- S : Suelo
- SS : Sedimentos de corriente
- R : Roca



LEYENDA

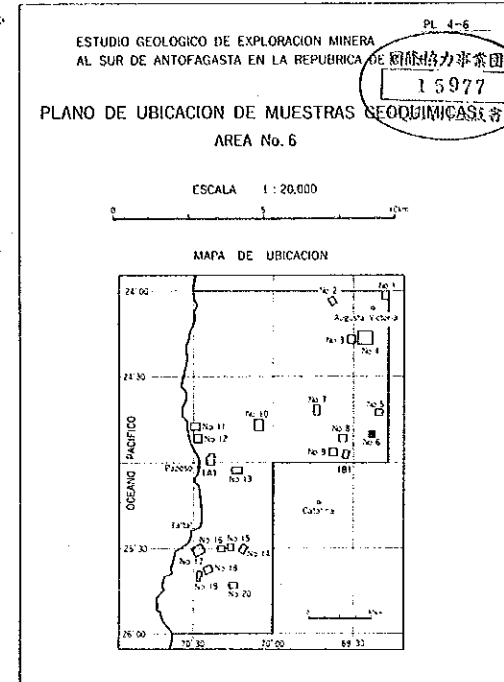
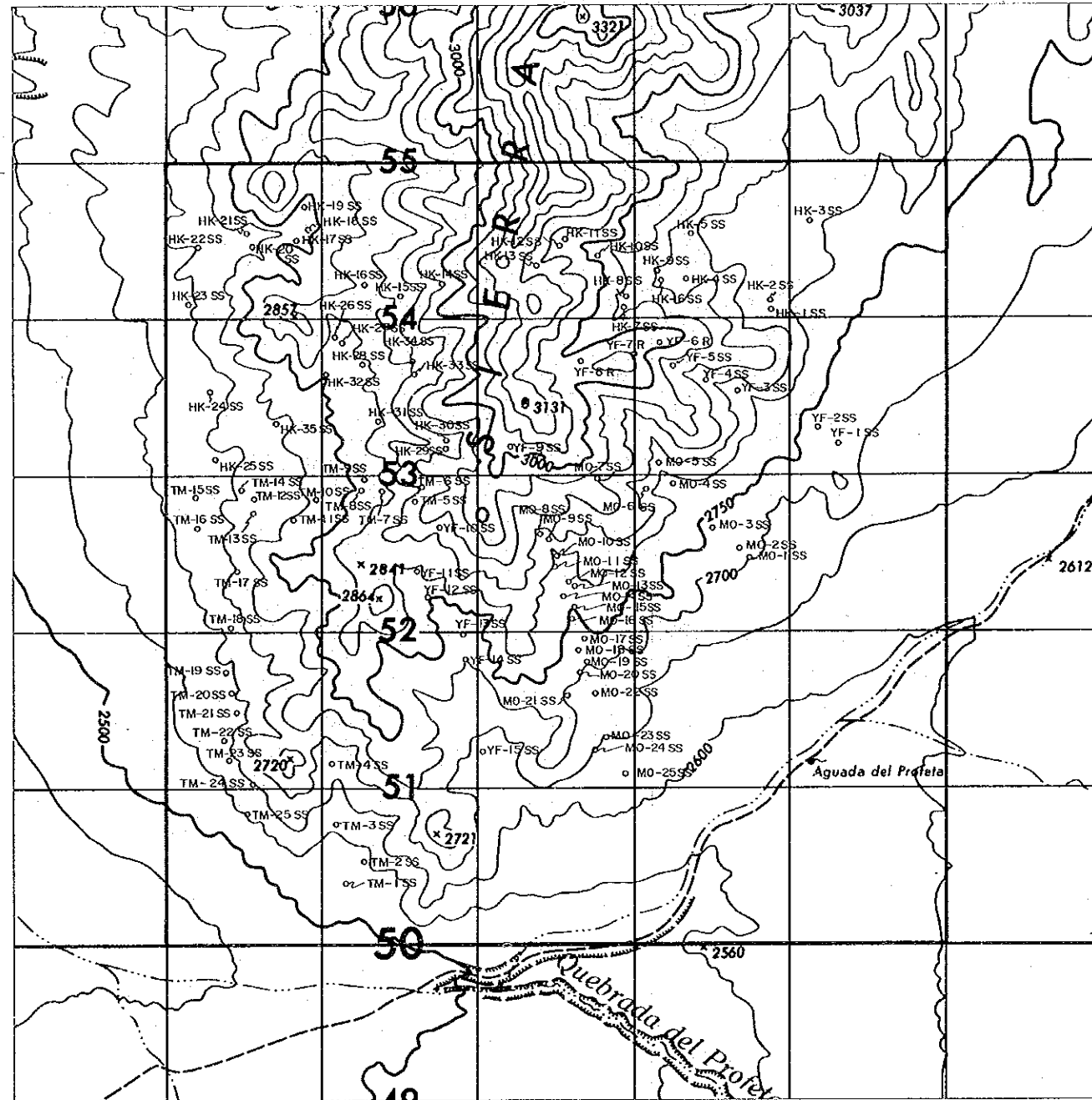
- o TM-1 Ubicación de muestra
- S : Suelo
- SS : Sedimentos de corriente
- R : Roca

0 1000m



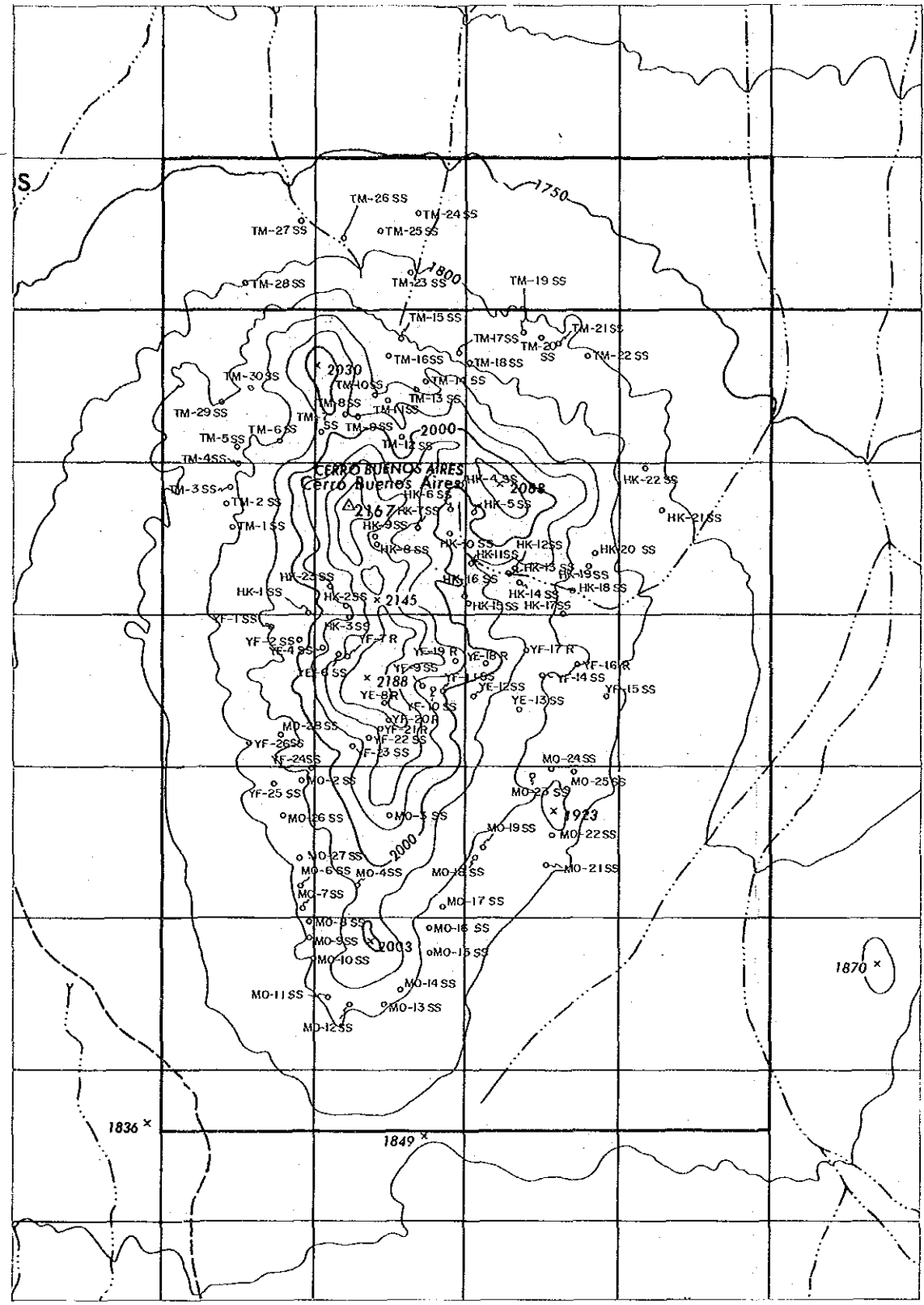
LEYENDA

- TM-1 Ubicación de muestra
- S : Suelo
- SS : Sedimentos de corriente
- R : Roca



LEYENDA

- TM-1 Ubicacion de muestra
- S : Suelo
- SS : Sedimentos de corriente
- R : Roca



PL. 4-7

ESTUDIO GEOLOGICO DE EXPLORACION MINERA
AL SUR DE ANTOFAGASTA EN LA REPUBLICA DE CHILE

PLANO DE UBICACION DE MUESTRAS GEOQUIMICAS
AREA No. 7

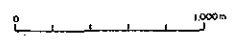
國際協力事業団
15977
国書資料室蔵書

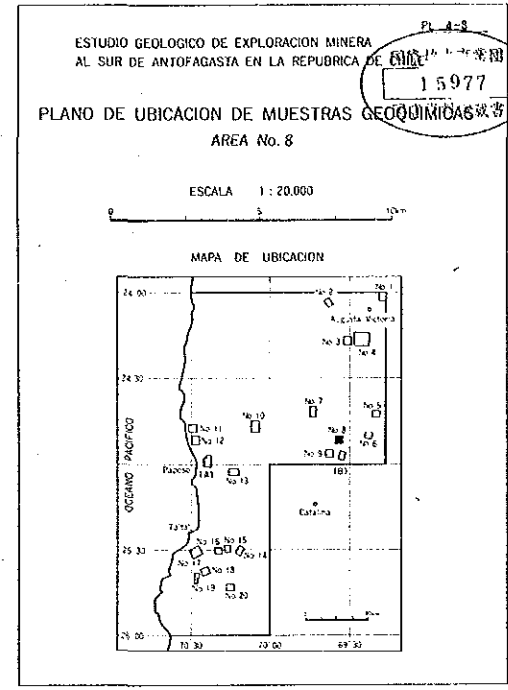
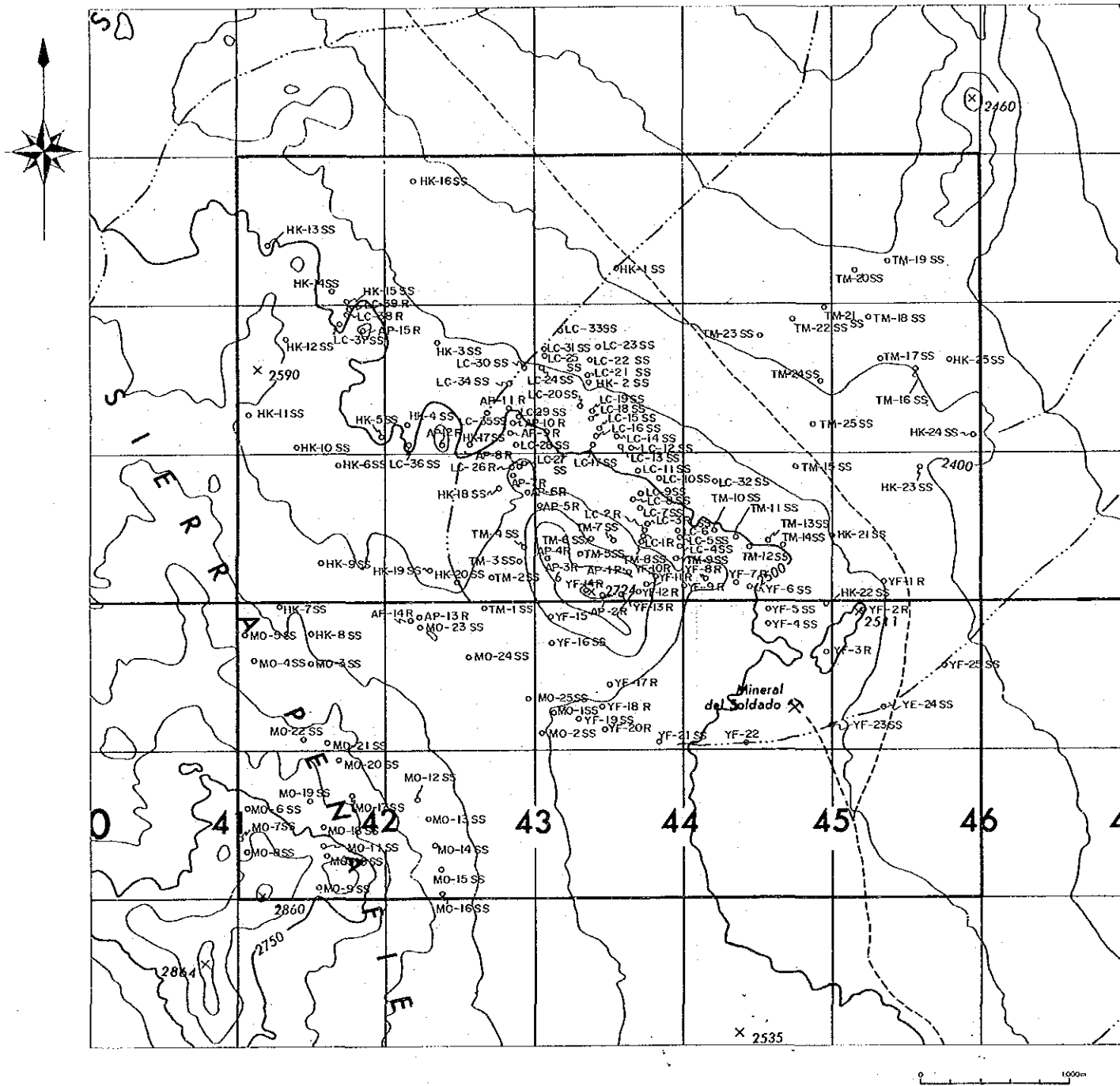
ESCALA 1 : 20,000

MAPA DE UBICACION

LEYENDA

- TM-1. Ubicacion de muestra
- S : Suelo
- SS : Sedimentos de corriente
- R : Roca





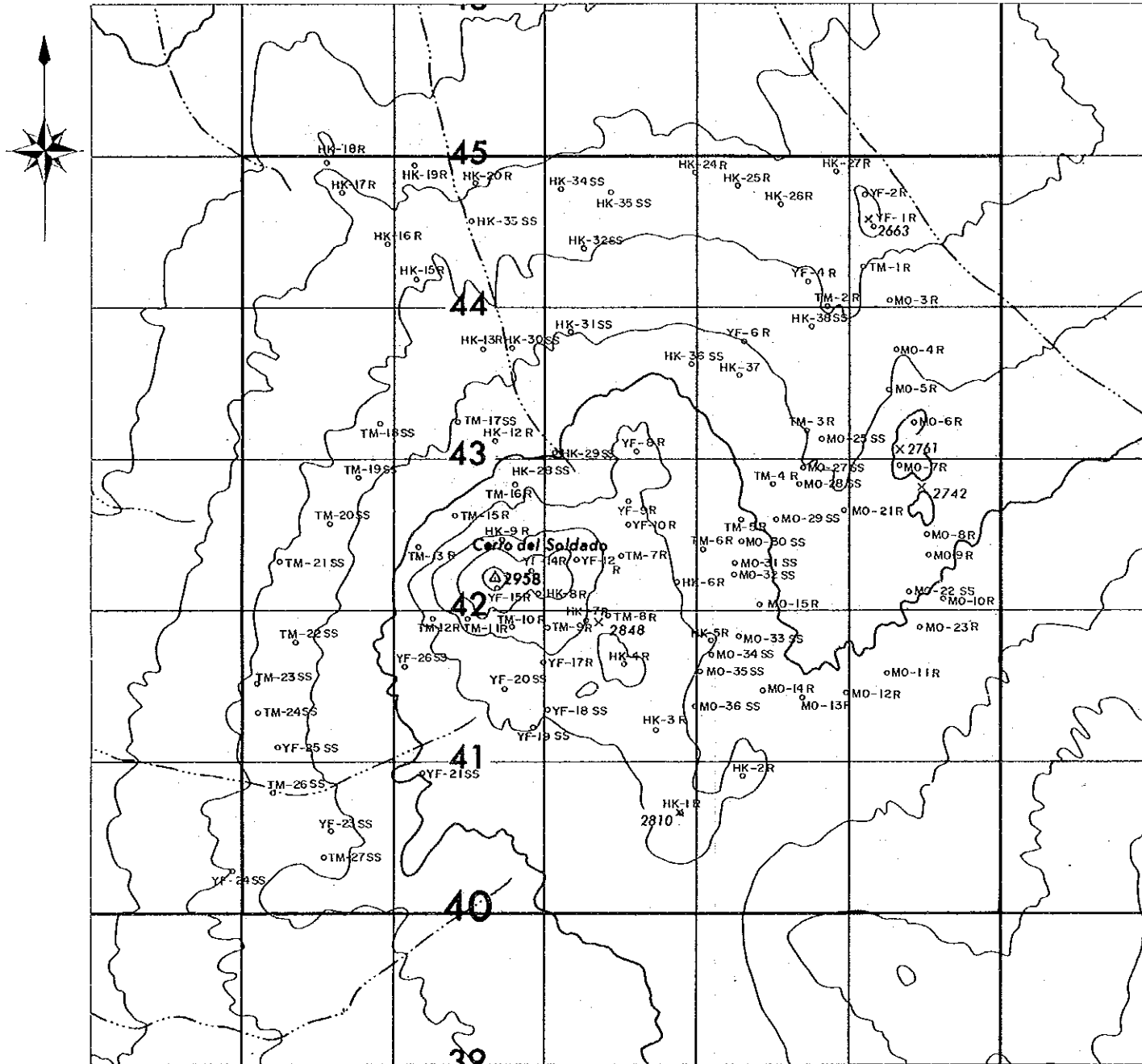
LEYENDA

○ TM-1 Ubicación de muestra

S : Suelo

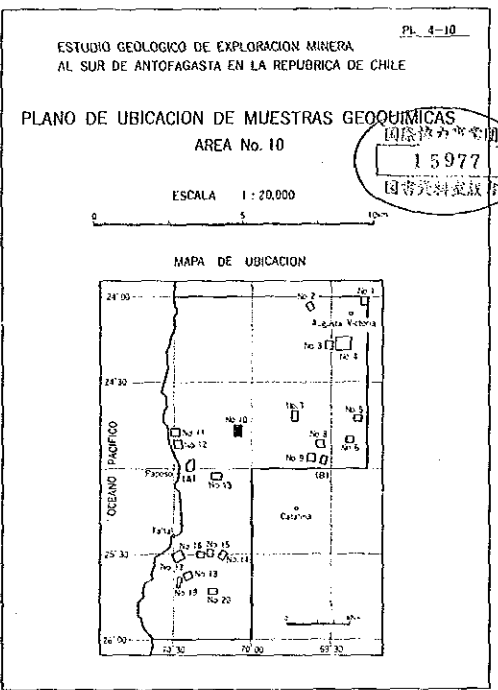
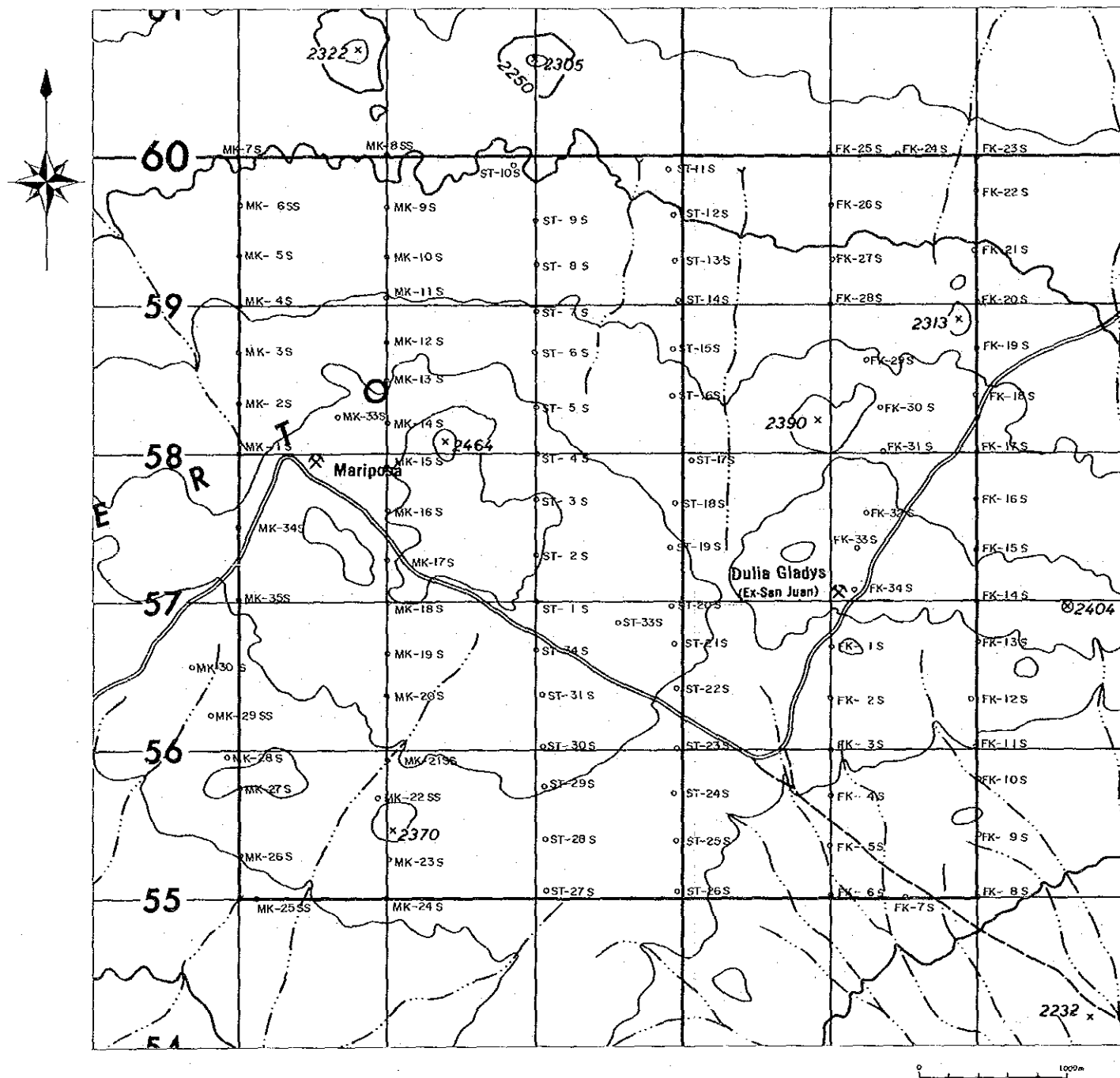
SS : Sedimentos de corriente

R : Roca

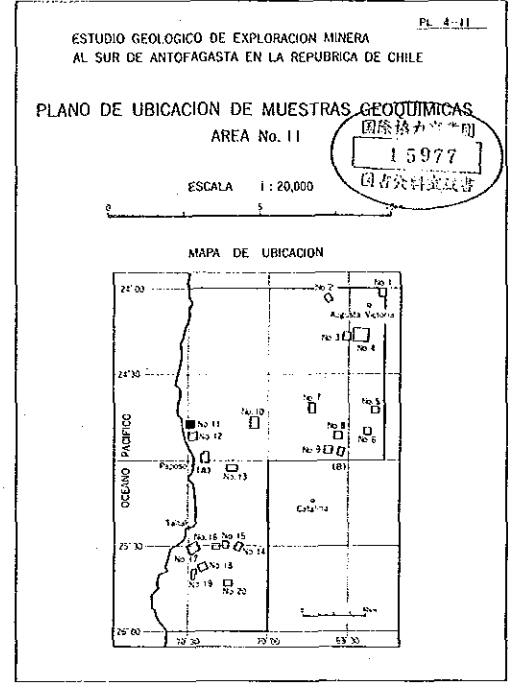
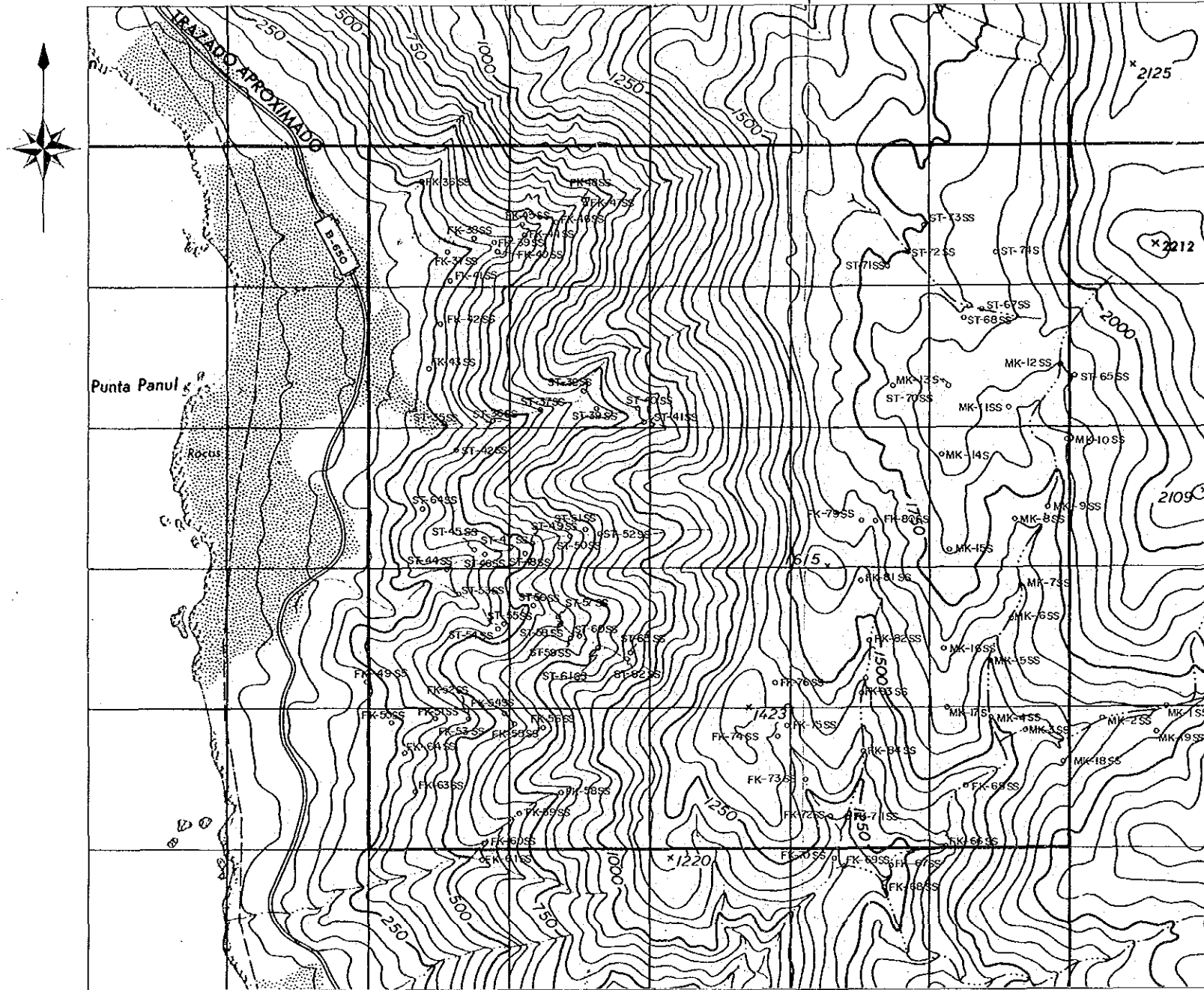


Pl. A-9
15977

- LEYENDA
- TM-1 Ubicacion de muestra
 - S : Suelo
 - SS : Sedimentos de corriente
 - R : Roca

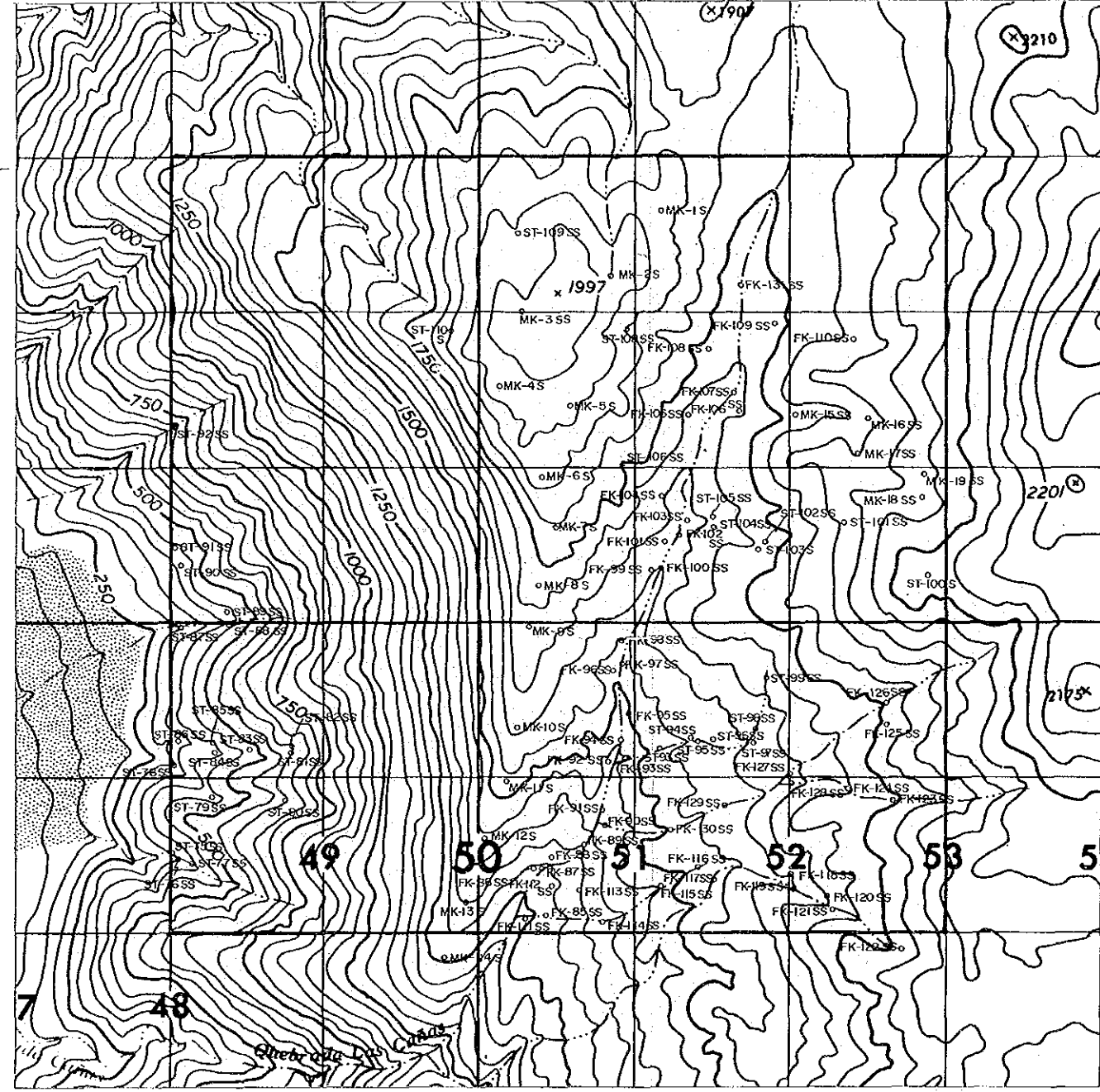


- LEYENDA
- TM-1. Ubicacion de muestra
 - S : Suelo
 - SS : Sedimentos de corriente
 - R : Roca

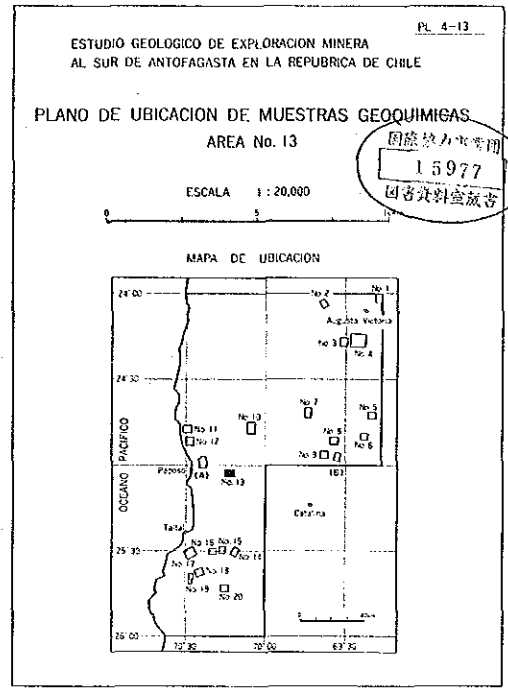
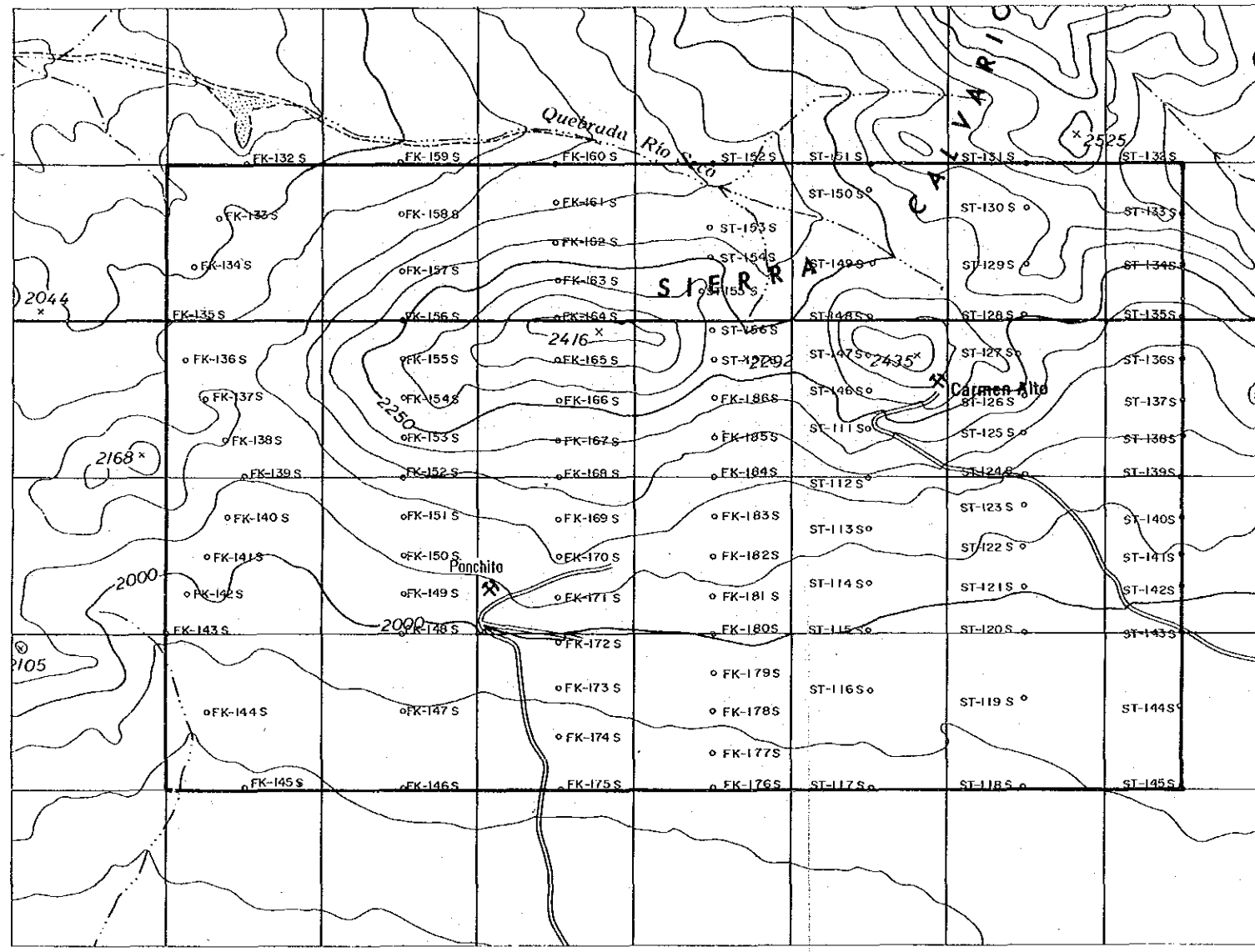


LEYENDA

- TM-1 Ubicacion de muestra
- S : Suelo
- SS : Sedimentos de corriente
- R : Roca

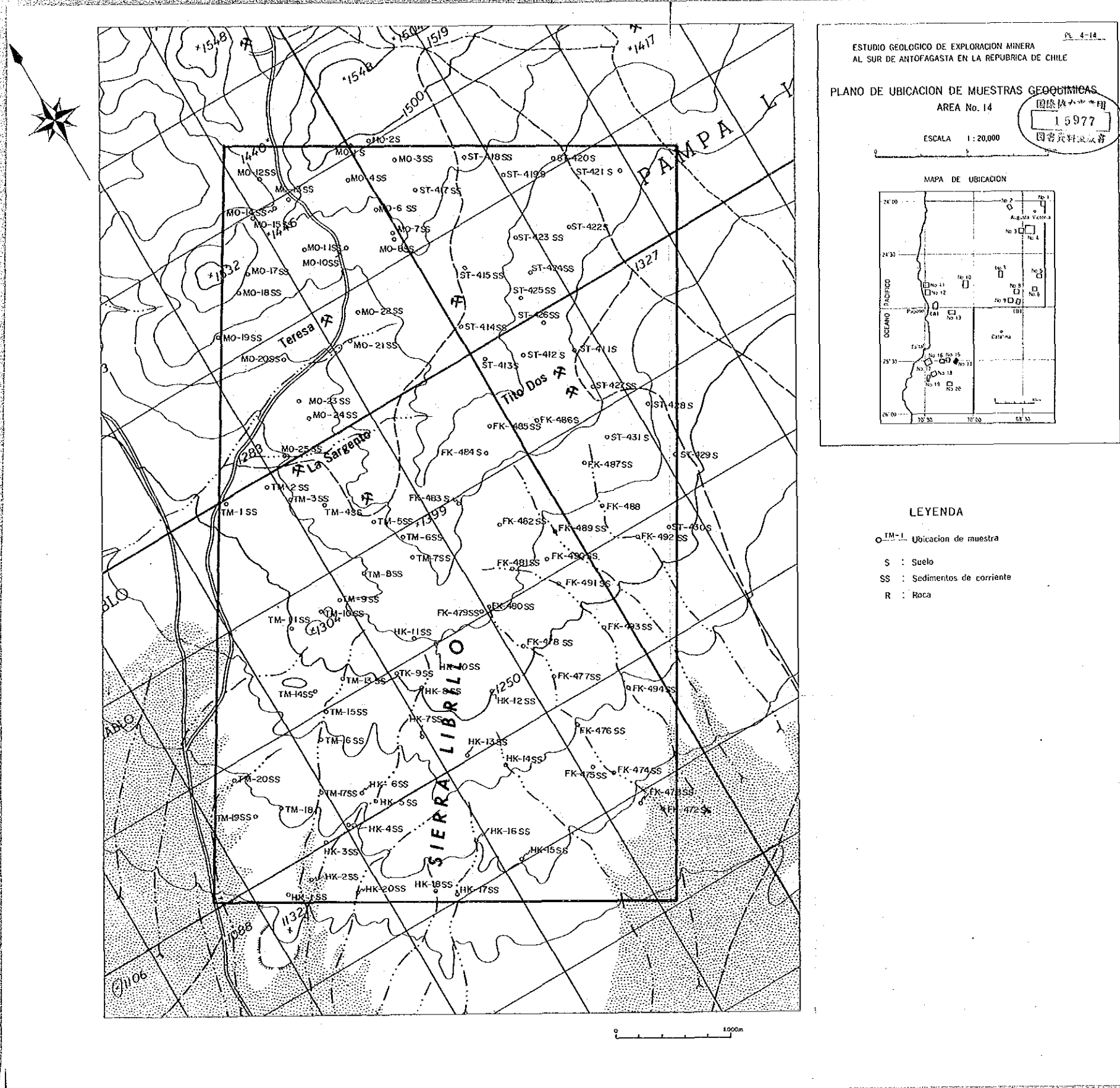


- LEYENDA
- ^{TM-1} Ubicacion de muestra
 - S : Suelo
 - SS : Sedimentos de corriente
 - R : Roca



LEYENDA

- TM-1 Ubicacion de muestra
- S : Suelo
- SS : Sedimentos de corriente
- R : Roca



Pl. 4-14

ESTUDIO GEOLOGICO DE EXPLORACION MINERA
AL SUR DE ANTOFAGASTA EN LA REPUBLICA DE CHILE

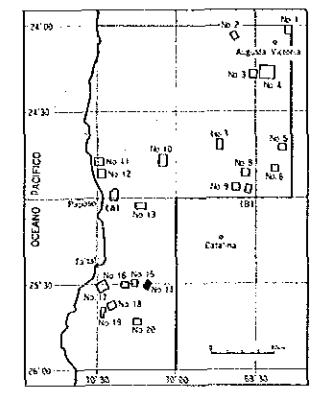
PLANO DE UBICACION DE MUESTRAS GEOQUIMICAS

AREA No. 14

15977

ESCALA 1:20,000

MAPA DE UBICACION



LEYENDA

- TM-1 Ubicación de muestra
- S : Suelo
- SS : Sedimentos de corriente
- R : Roca