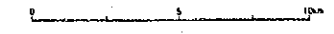
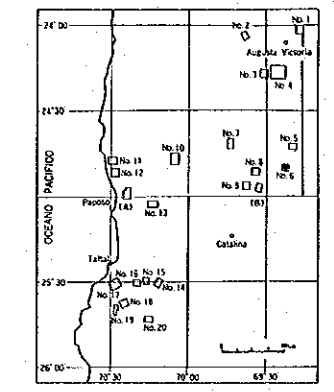


No. 6 MAP GEOLOGIC

ESCALA 1 : 20,000

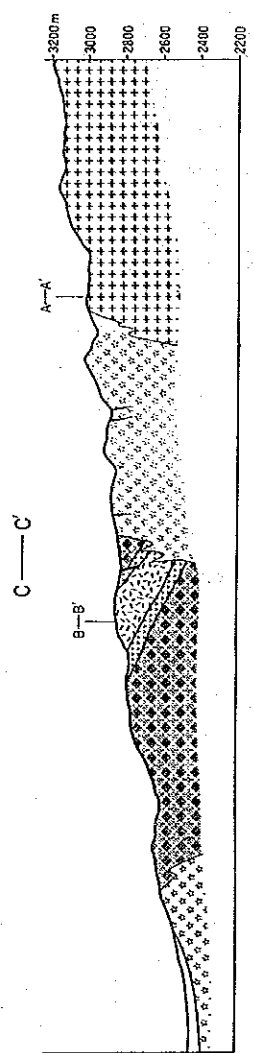
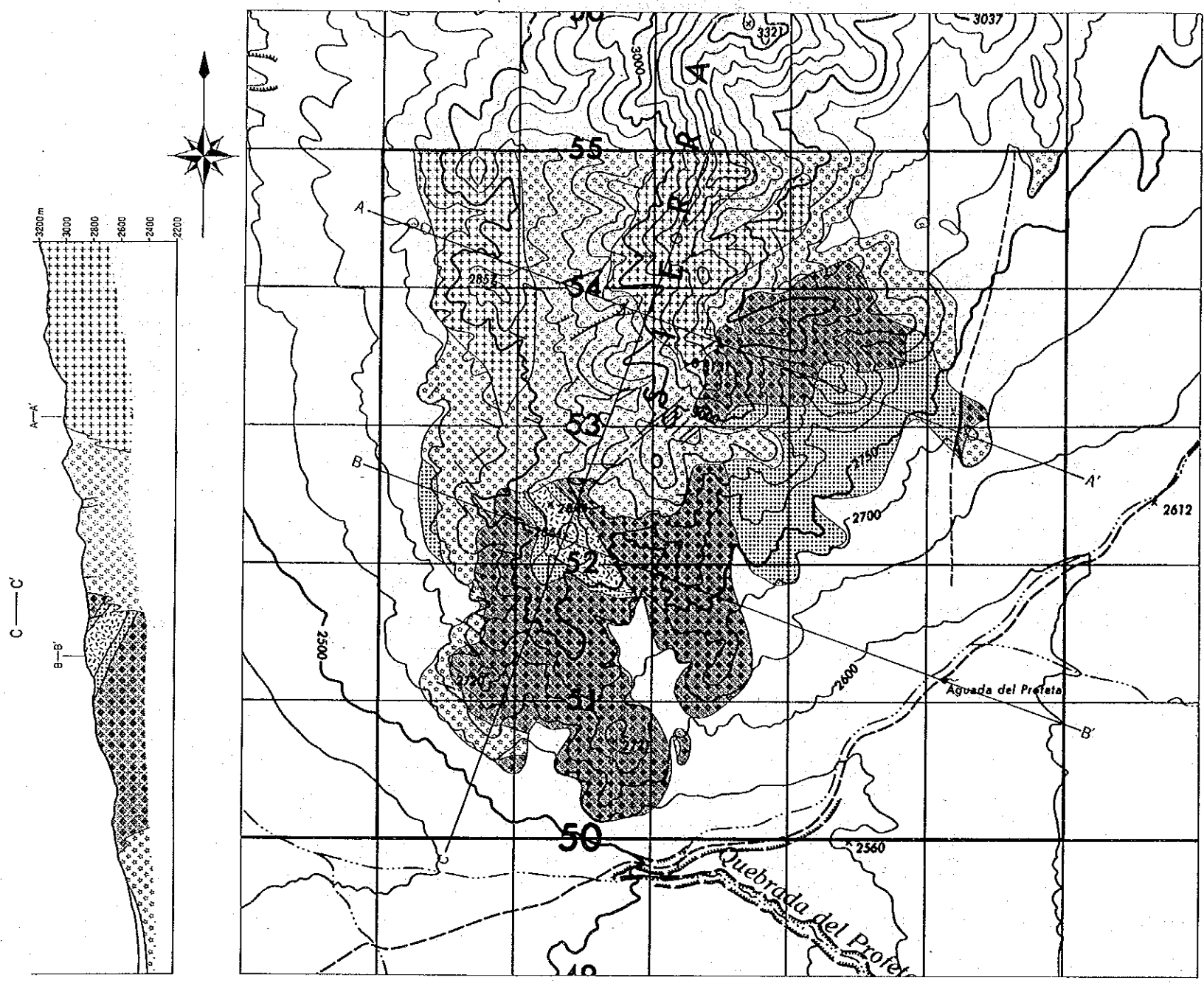


MAPA DE UBICACION

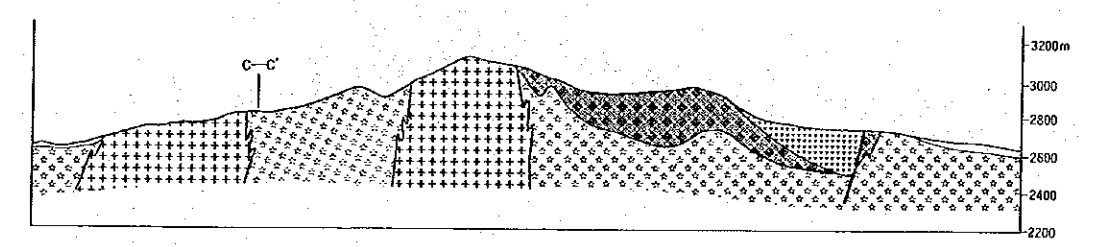


LEYENDA

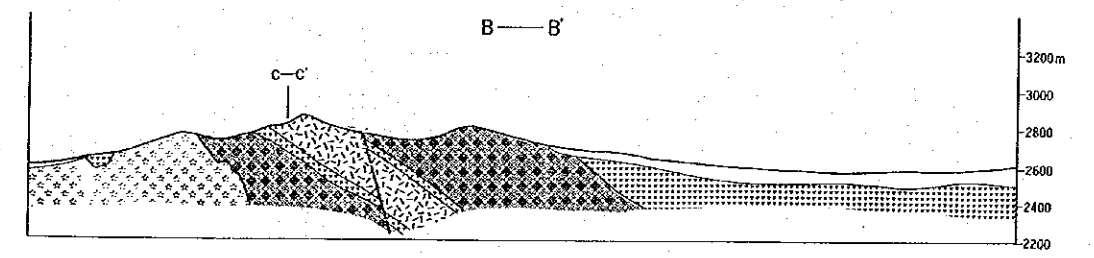
- Arena y grava
- Andesita
- Toba dacítica
- Dacita
- Granito aplítico
- Granodiorita
- Veta
- Diseminación de limonita
- Falla



A—A'



B—B'

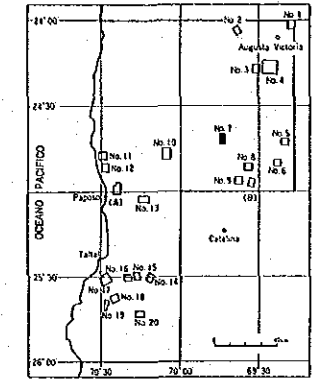


No. 7 MAP GEOLOGIC

ESCALA 1 : 20,000

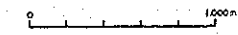
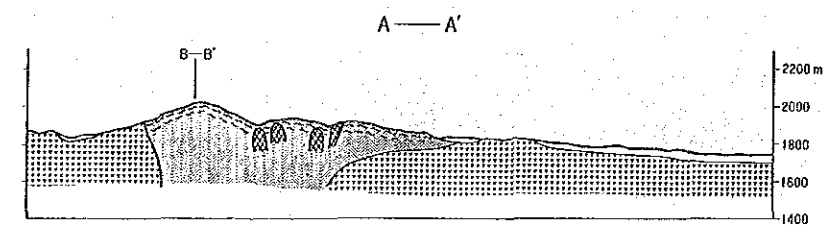
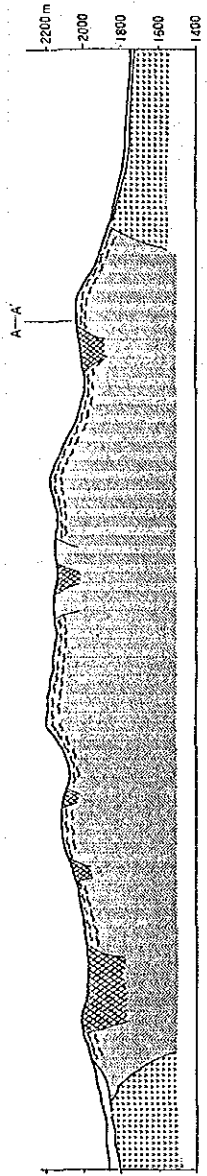
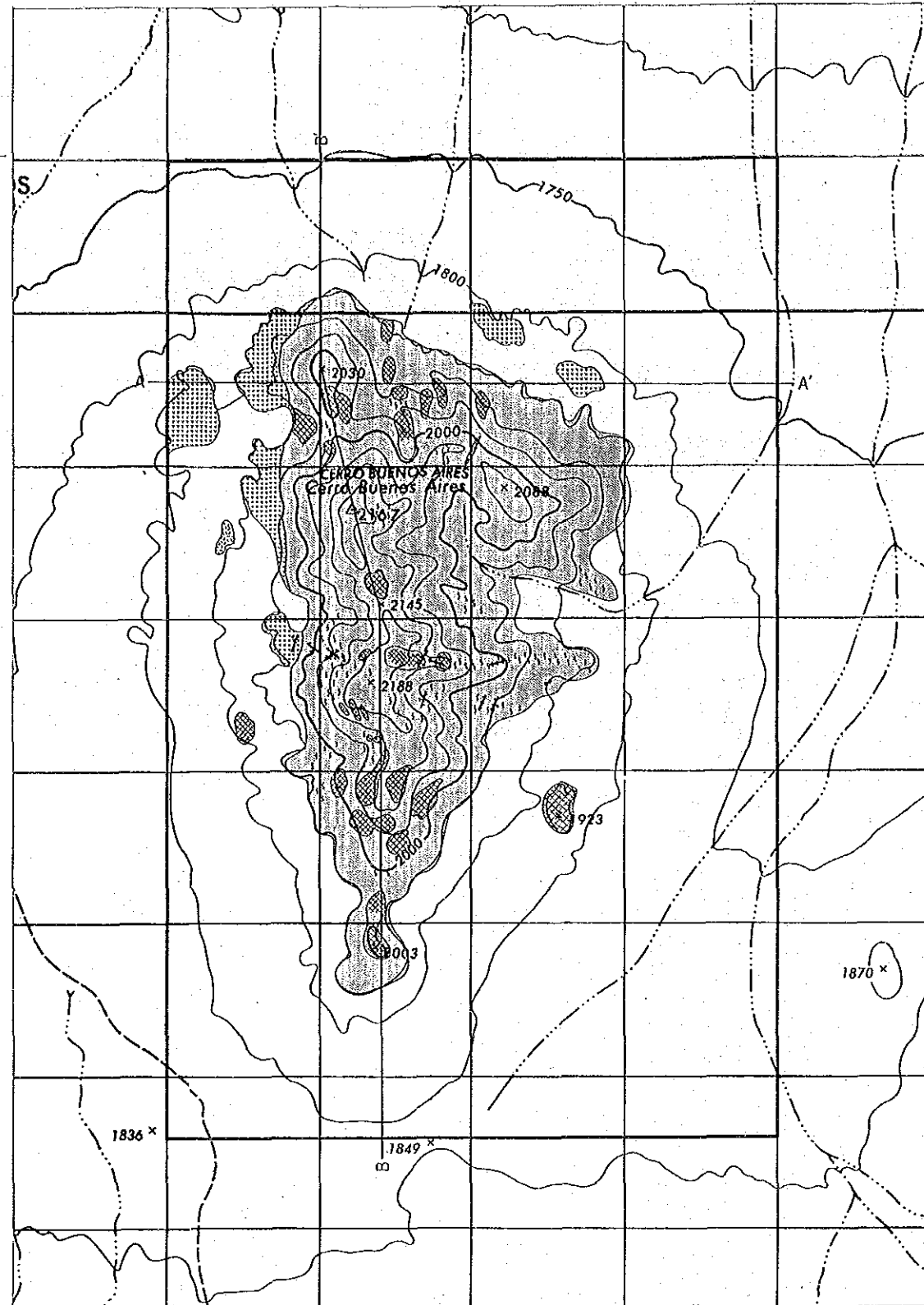


MAPA DE UBICACION



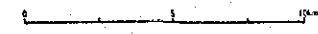
LEYENDA

- Arena y grava
- Riolita
- Toba andesitica
- Andesita
- Sulfidacion
- Argilizacion
- Veta de cuarzo y/o limonita
- Diaclasa

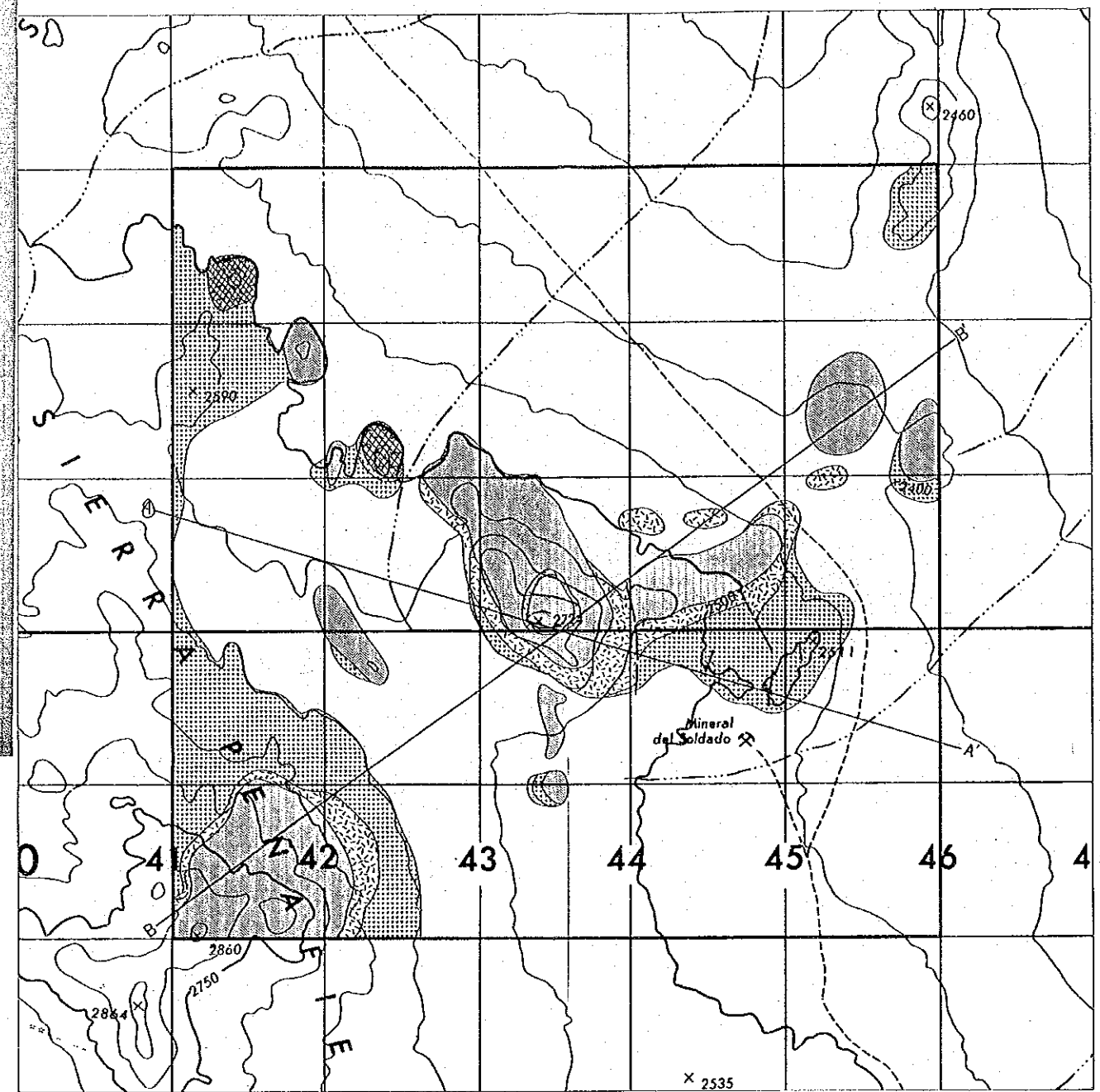
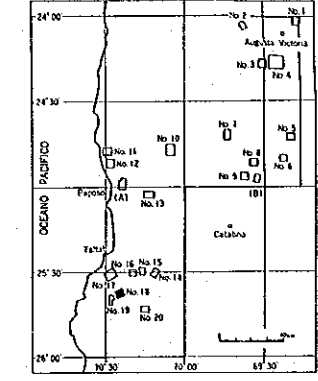


No. 8 MAP GEOLOGIC

ESCALA 1 : 20.000

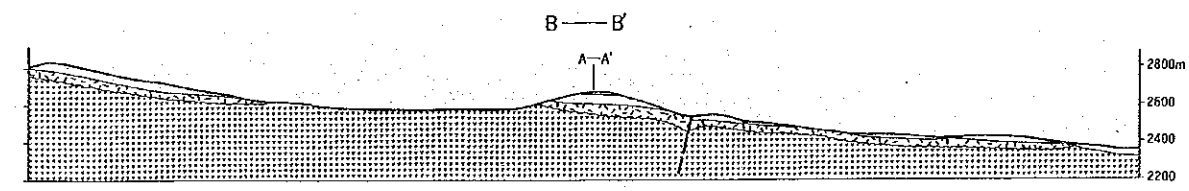
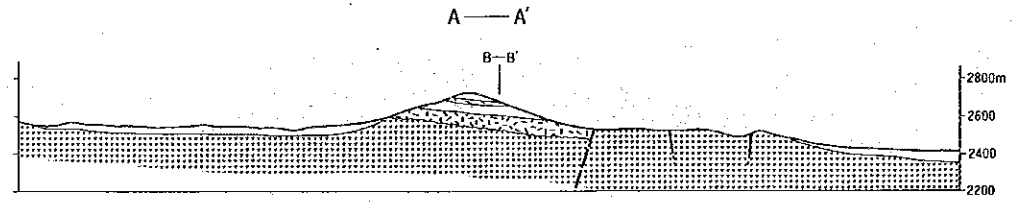
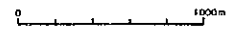


MAPA DE UBICACION



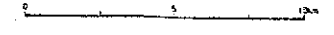
LEYENDA

- Arena y grava
- Riolítica
- Toba riolítica
- Andesita
- Veta
- Silificación
- Argilización
- Falla inferida
- Mina

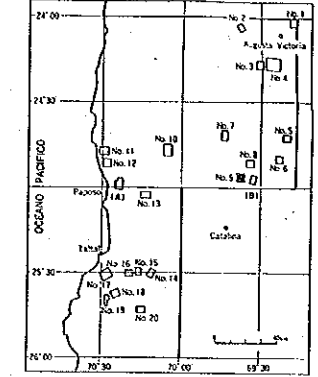


No. 9 MAP GEOLOGIC

ESCALA 1 : 20,000

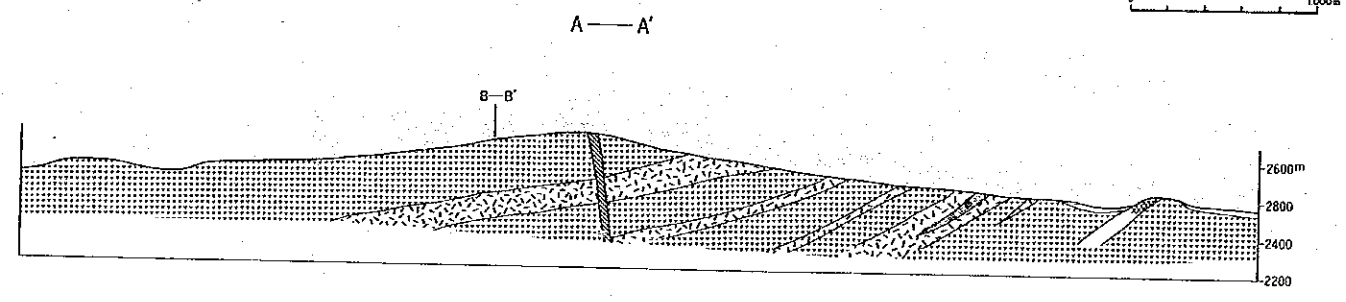
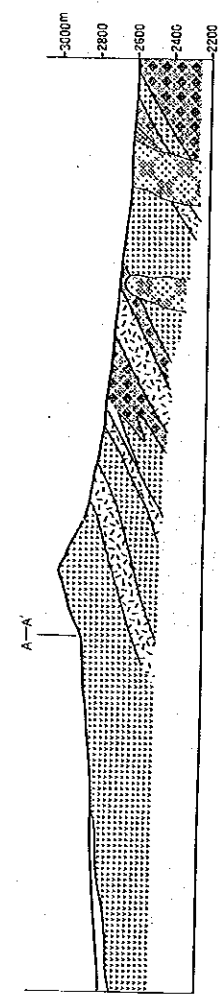
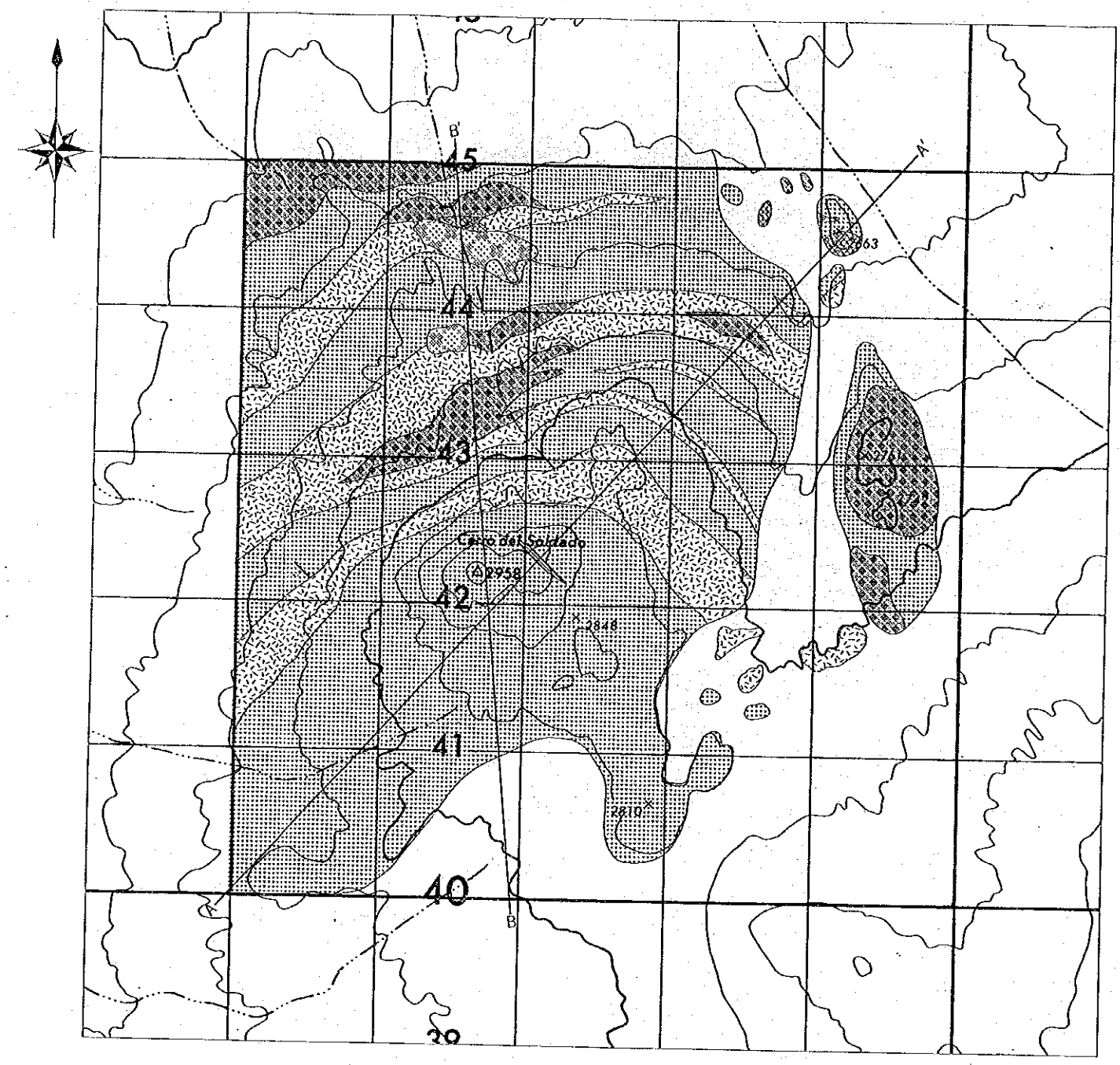


MAPA DE UBICACION



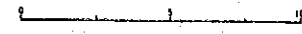
LEYENDA

- Arena y grava
- Andesita
- Toba dacitica
- Dacita
- Dique andesitico
- Pofido dacitico
- Rumbo y manto
- Silicificacion
- Veta

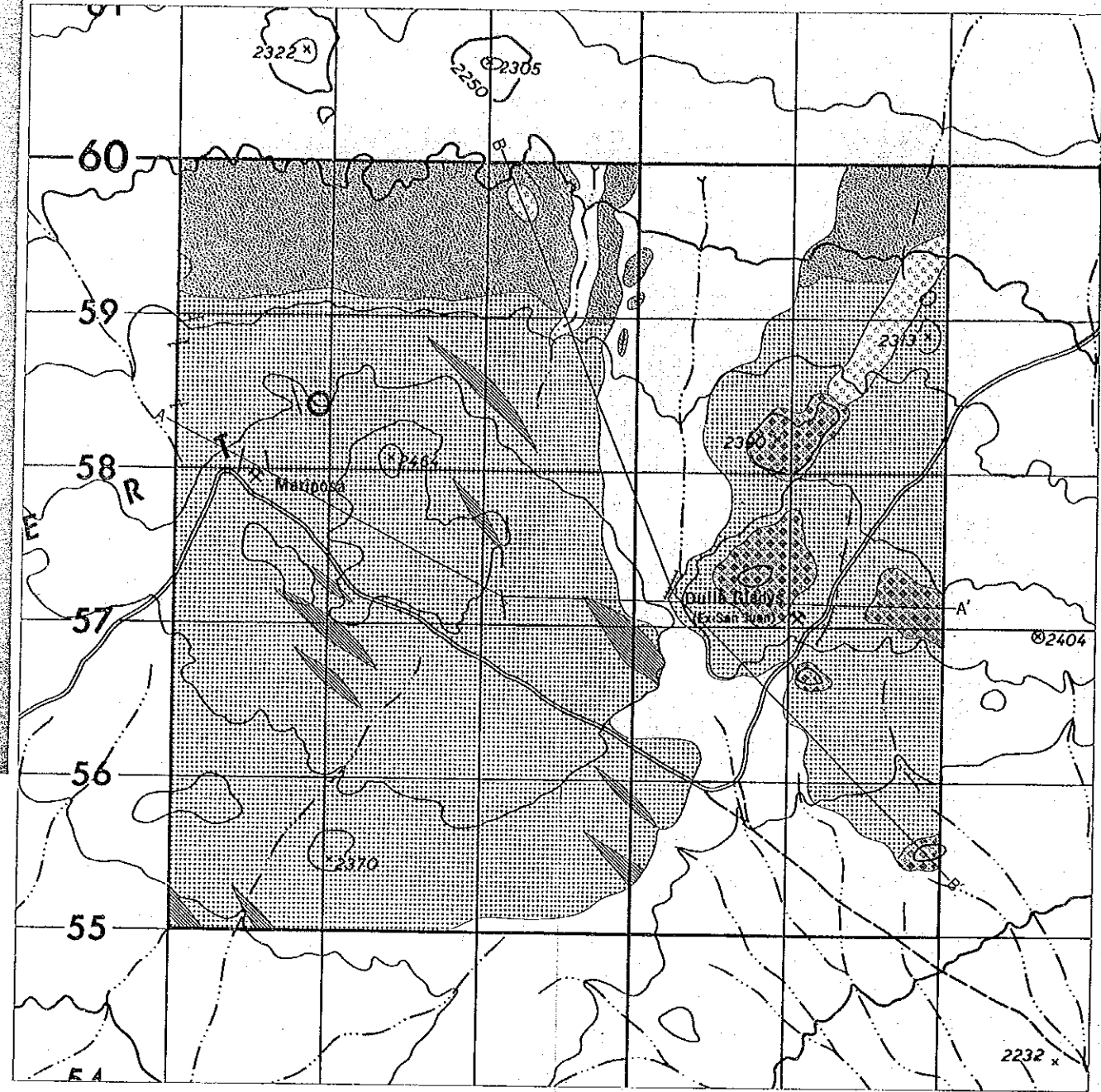
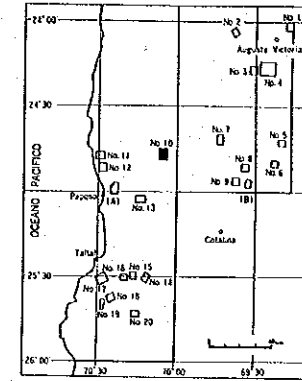


No. 10 MAP GEOLOGIC

ESCALA 1 : 20,000



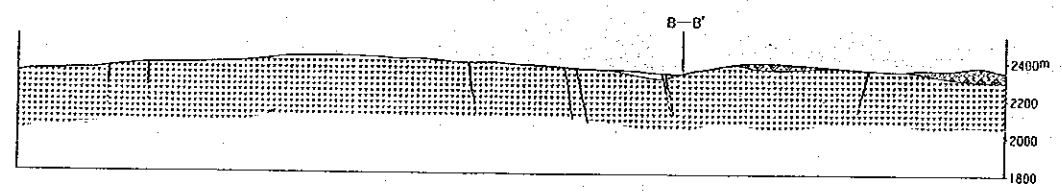
MAPA DE UBICACION



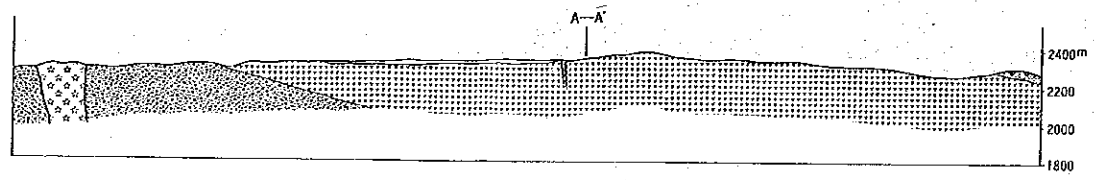
LEYENDA

- Arena y grava
- Dacita
- Dique andesitico
- Andesita
- Arenisca
- Granodiorita porfidaica
- Veta
- Rumbo y manteo
- Mina

A—A'



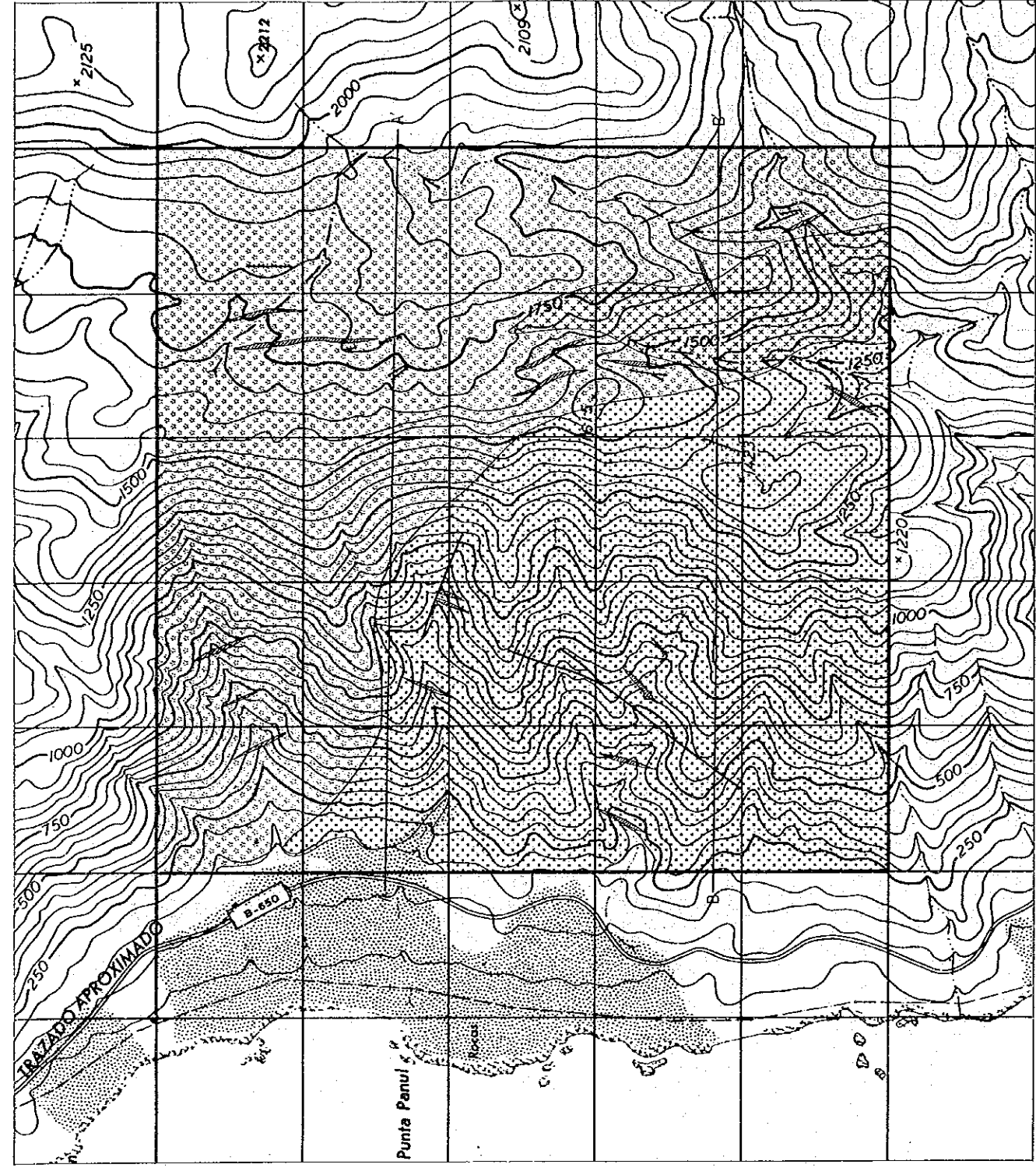
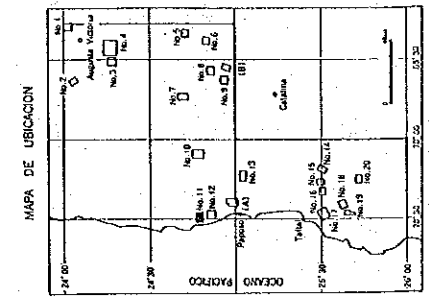
B—B'



ESTUDIO GEOLOGICO DE EXPLORACION MINERA
AL SUR DE ANTOFAGASTA EN LA REPUBLICA DE CHILE

No. 11 MAP GEOLOGIC

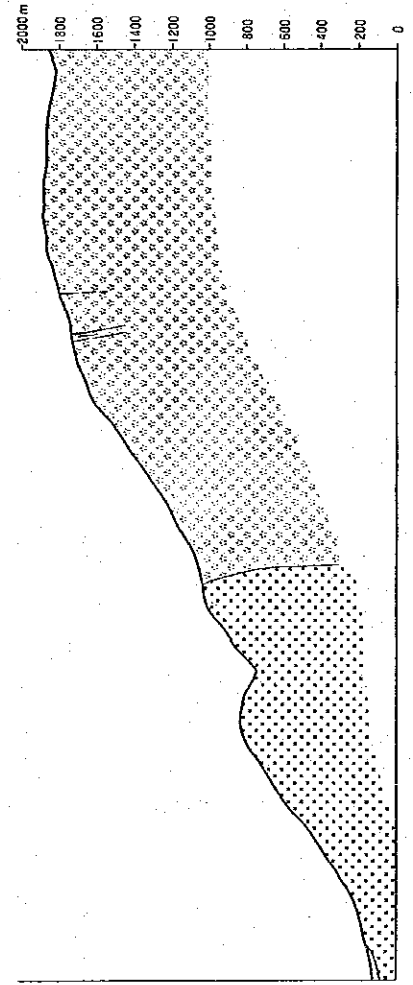
ESCALA 1:20,000



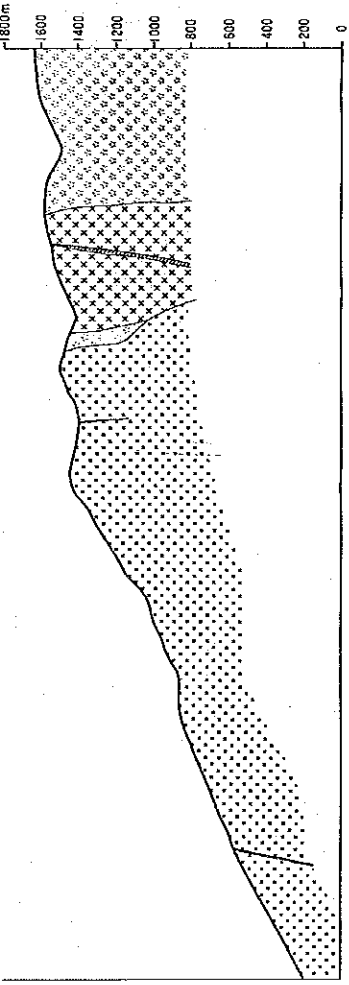
LEYENDA

- Arena y grava
- Dique andesítico
- Diorita
- Granodiorite
- Dierita cuarcífera
- Veta
- Falla
- Socavón

A—A'



B—B'

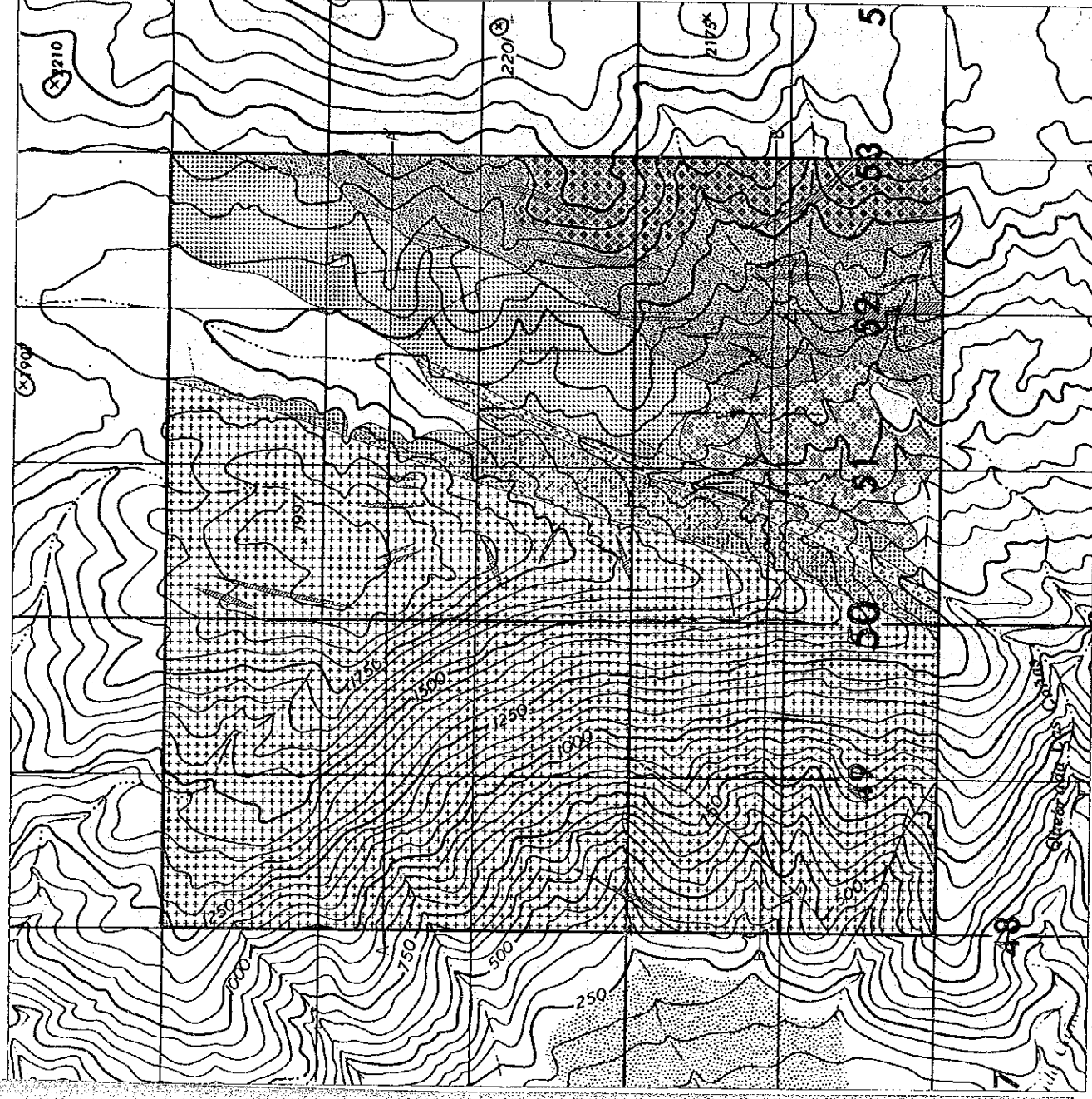
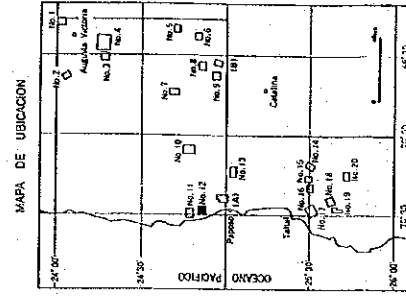


ESTUDIO GEOLÓGICO DE EXPLORACIÓN MINERA
AL SUR DE ANTOFAGASTA EN LA REPÚBLICA DE CHILE

Fig. 55

No. 12 MAP GEOLOGIC

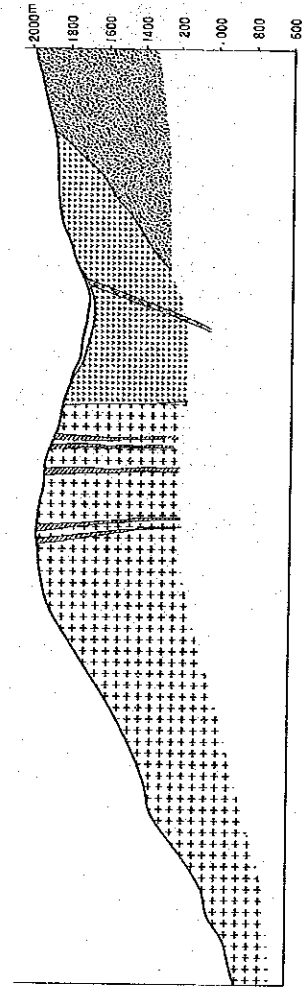
ESCALA 1:20,000



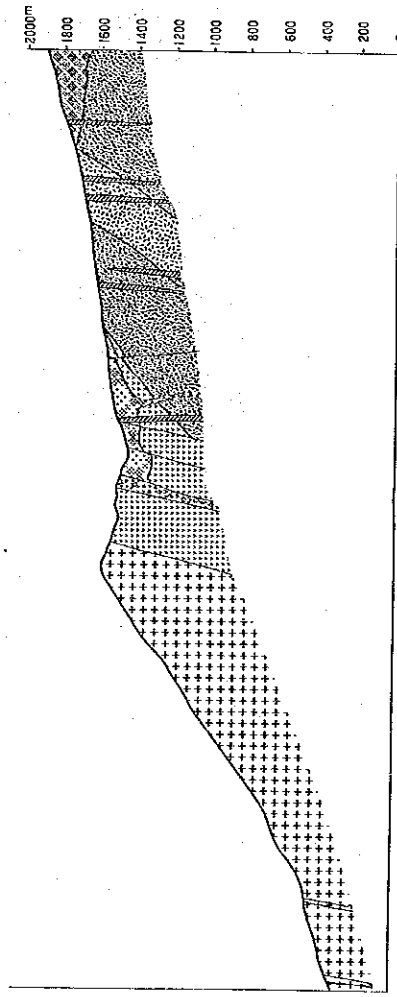
LEYENDA

- Arena y grava
- Decita
- Porfido dacitico
- Andesita
- Toba andesitica
- Aventica
- Dique andesitico
- Diorita
- Veta
- Rumbo y mantico
- Falla
- Zona de brecha por falla
- Pique

A — A'



B — B'



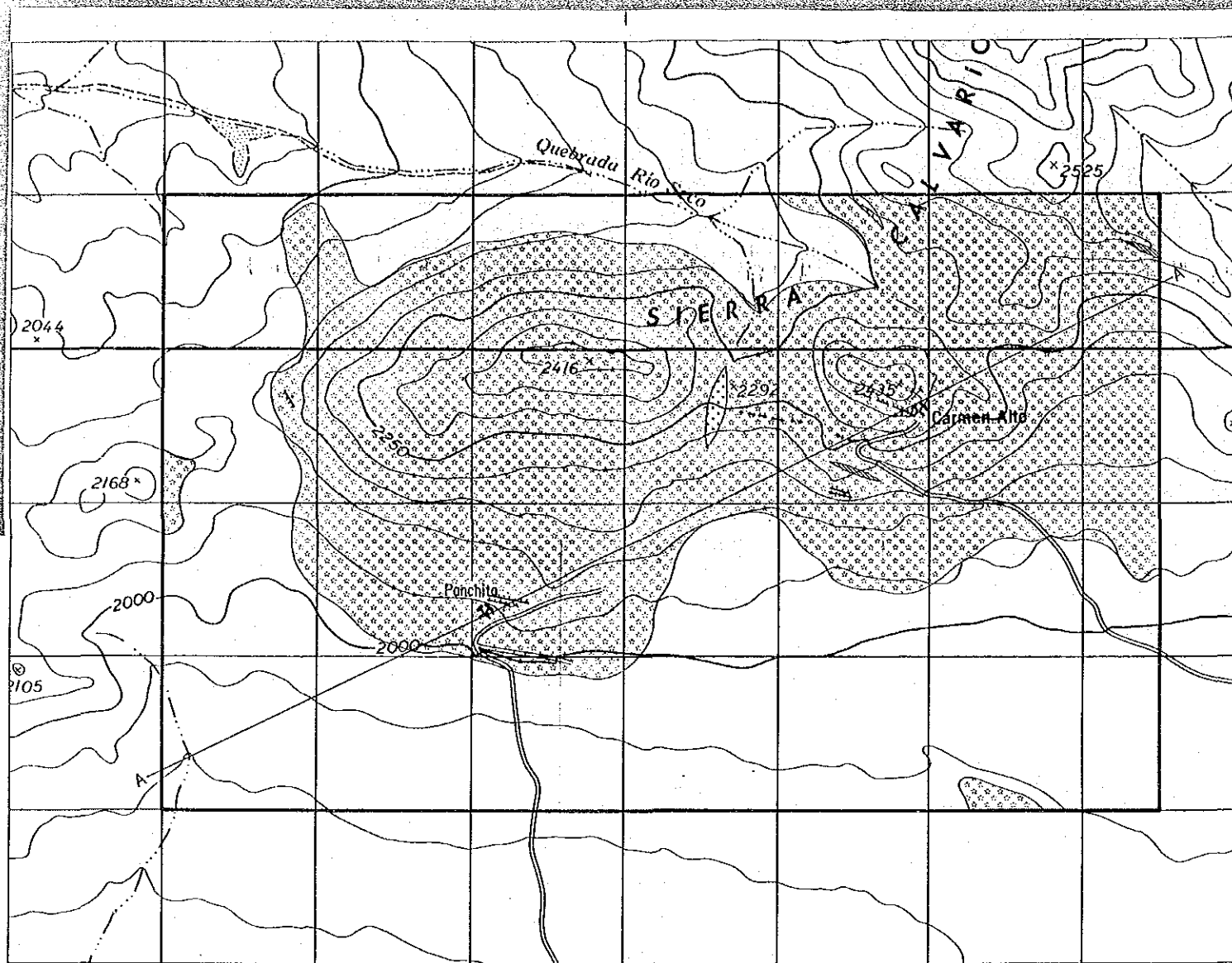


Fig. 67

ESTUDIO GEOLOGICO DE EXPLORACION MINERA
AL SUR DE ANTOFAGASTA EN LA REPUBLICA DE CHILE

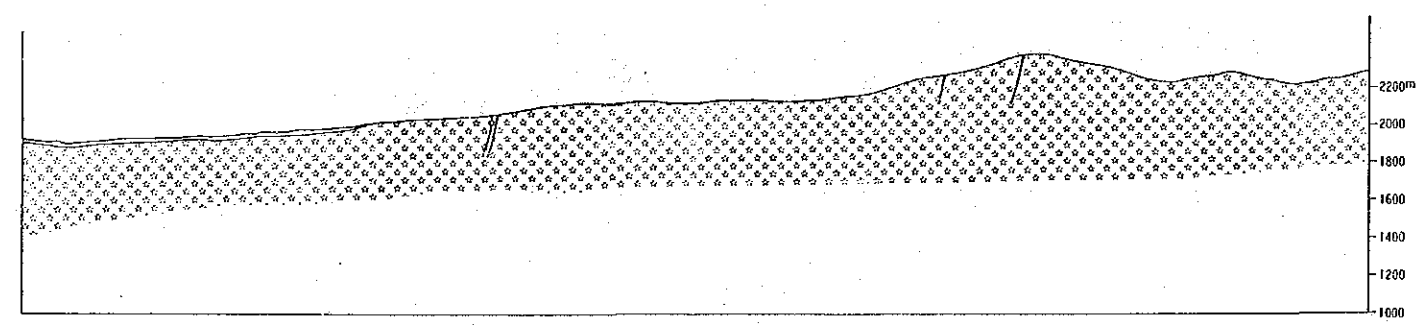
No. 13 MAP GEOLOGIC

ESCALA 1 : 20.000

MAPA DE UBICACION

- LEYENDA
- Arena y grava
 - Dique andesítico
 - Granito aplítico
 - Granodiorita
 - Veta
 - Mina
 - Socavón
 - Pique

A—A'



F6 68

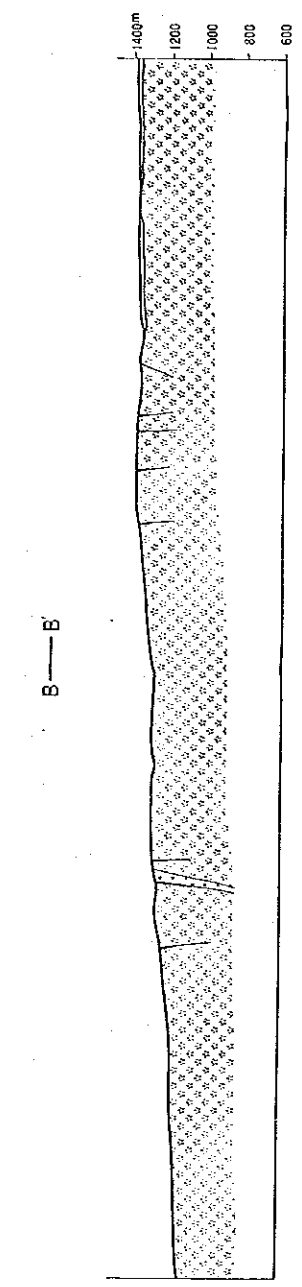
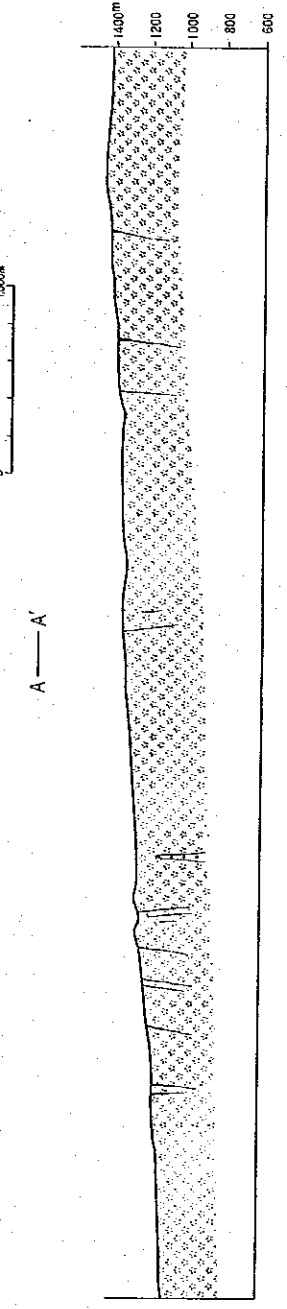
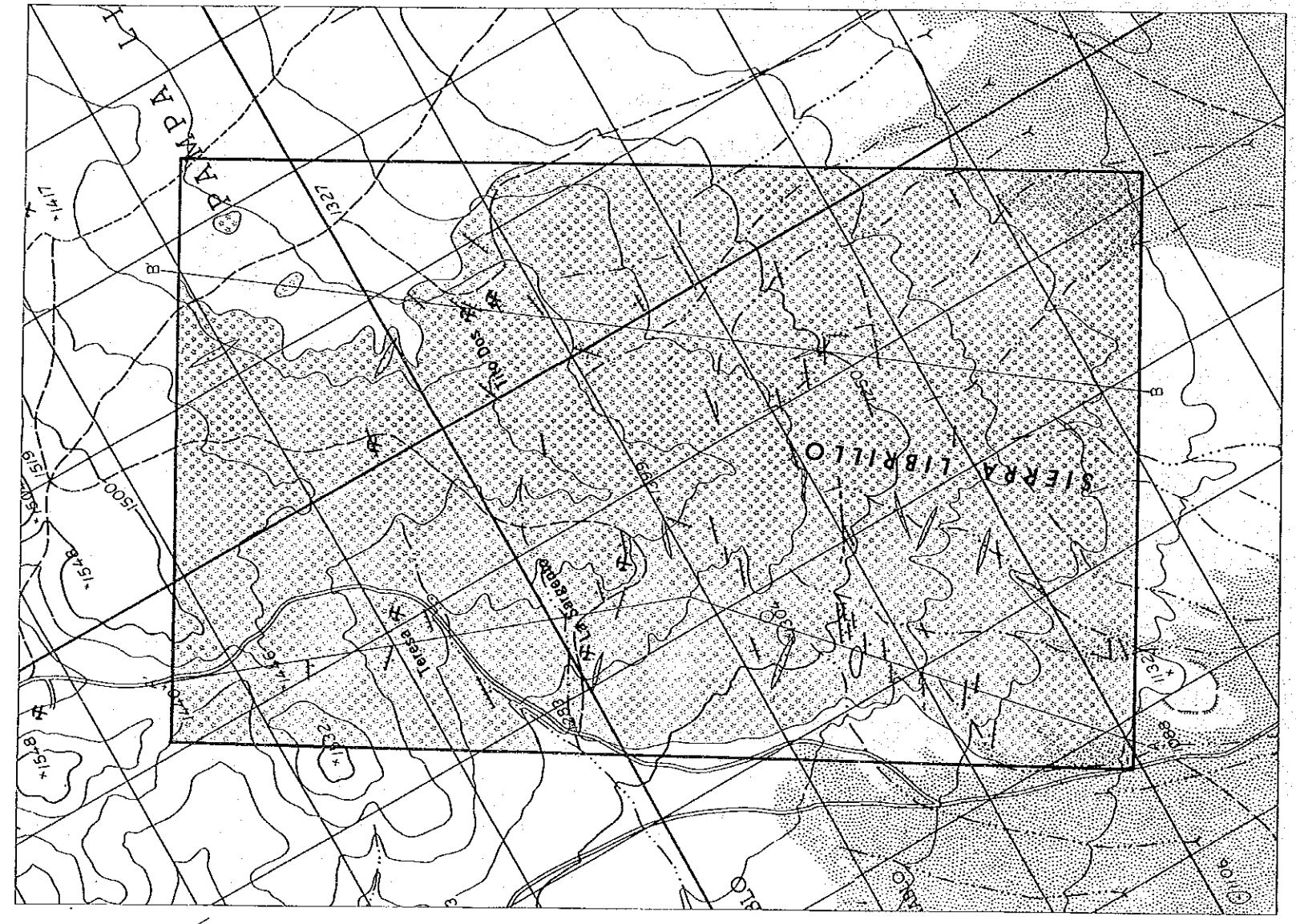
ESTUDIO GEOLOGICO DE EXPLORACION MINERA
AL SUR DE ANTOFAGASTA EN LA REPUBLICA DE CHILE

No. 14 MAP GEOLOGIC

ESCALA 1 : 20.000

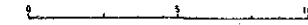
MAPA DE UBICACION

- LEYENDA
- Arenas y gravas
 - Granodiorita aptita
 - Granodiorita
 - Veta
 - Mina
 - Pique

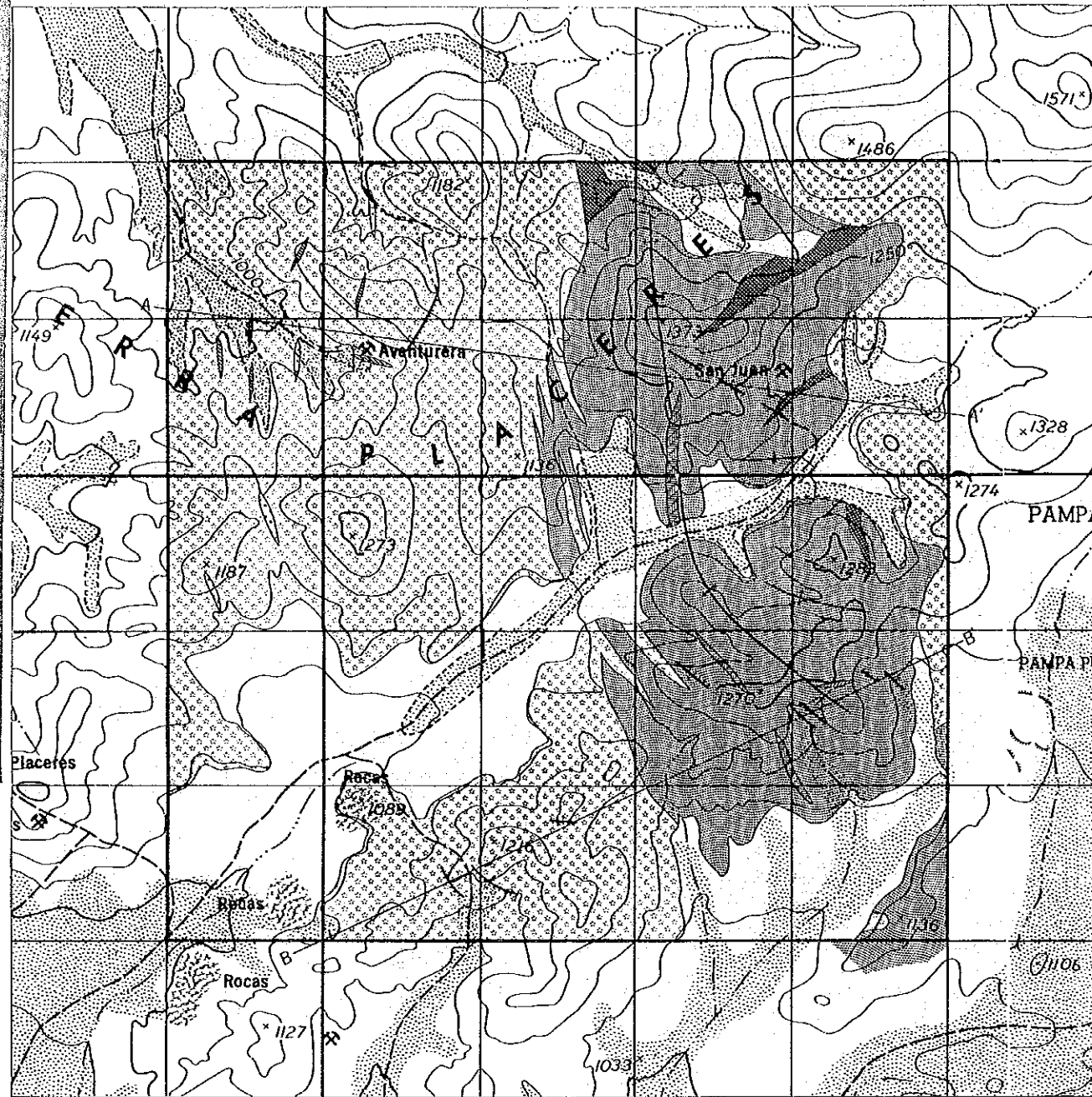
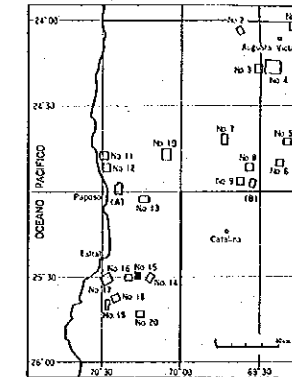


No. 15 MAP GEOLOGIC

ESCALA 1 : 20,000



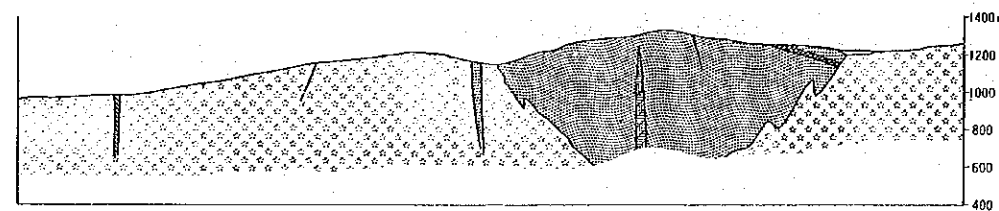
MAPA DE UBICACION



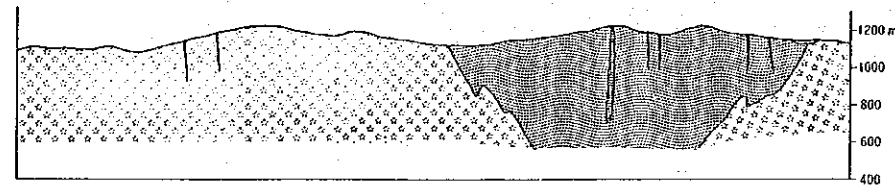
LEVENDA

- Arena y grava
- Lava metabasaltica
- Meta-sedimento (meta-arenisca y cuarcita)
- Dique andesitico basaltico
- Dique dacitico
- Dique aptitico
- Granodiorita
- Veta
- Rumbo y manto
- Eje anticlinal
- Eje sincinal
- Mina

A — A'

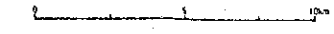


B — B'

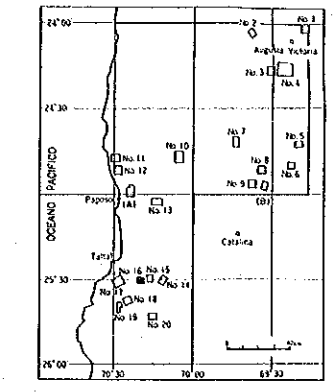


No. 16 MAP GEOLOGIC

ESCALA 1 : 20,000

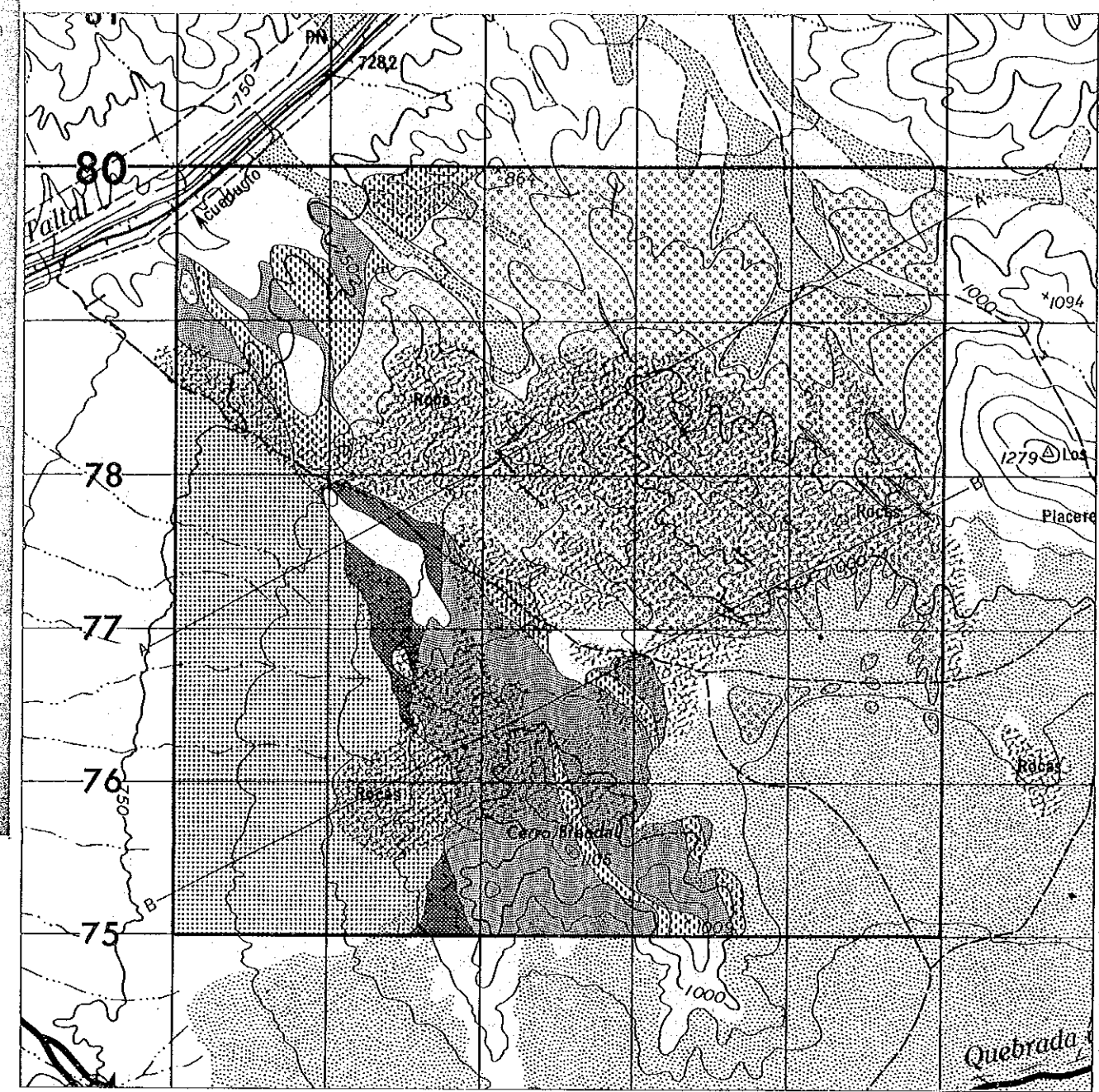


MAPA DE UBICACION

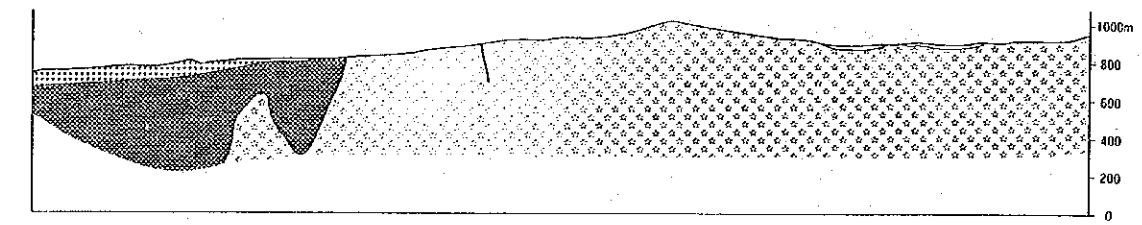


LEYENDA

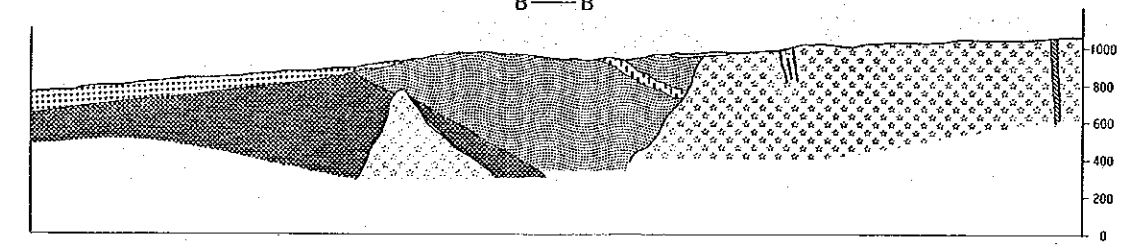
- Arana y grava
- Andesita con intercalacion de volcavenita
- Cuarzita
- Metandesita
- Metabasalto
- Dique andesitico
- Granodiorita
- Veta

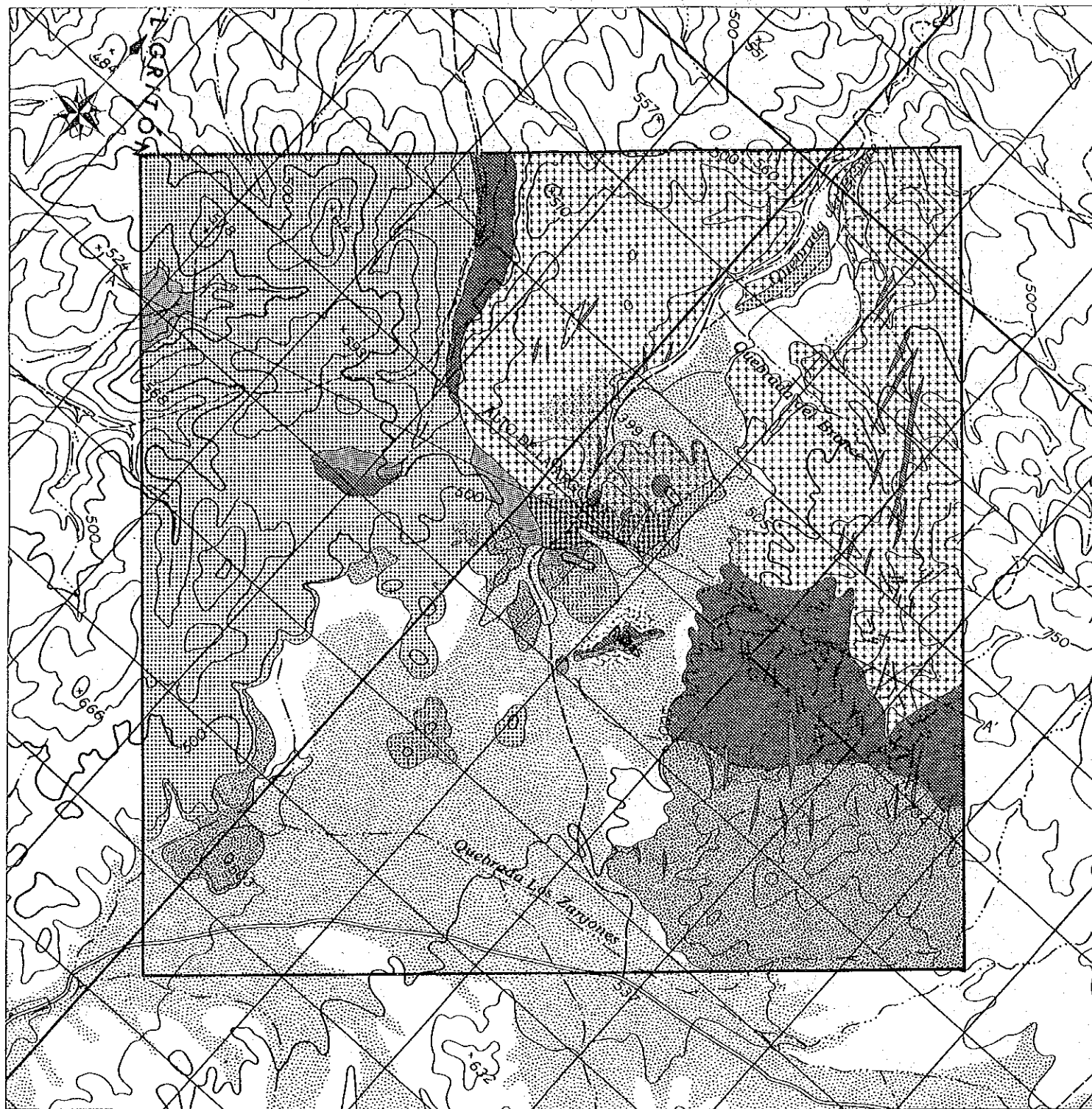


A—A'



B—B'



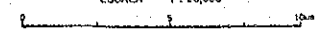


ESTUDIO GEOLOGICO DE EXPLORACION MINERA
AL SUR DE ANTOFAGASTA EN LA REPUBLICA DE CHILE

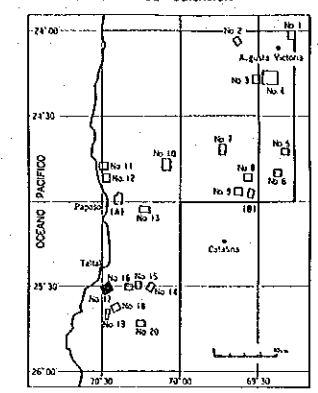
Fig. 71

No. 17 MAP GEOLOGIC


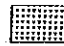




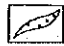
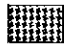
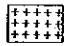
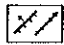
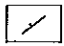
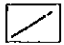
ESCALA 1 : 20,000



MAPA DE UBICACION



LEYENDA

-  Arena y grava
-  Andesita
-  Toba andesitica
-  Metarenisca
-  Melabasalto
-  Dique andesitica
-  Dique aptitico
-  Gabra
-  Diorita
-  Veta
-  Rumbo y manto
-  Falla

A — A'

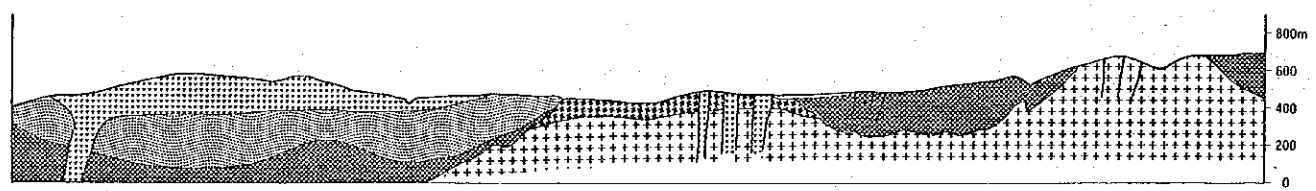


Fig. 22

ESTUDIO GEOLOGICO DE EXPLORACION MINERA
AL SUR DE ANTOFAGASTA EN LA REPUBLICA DE CHILE

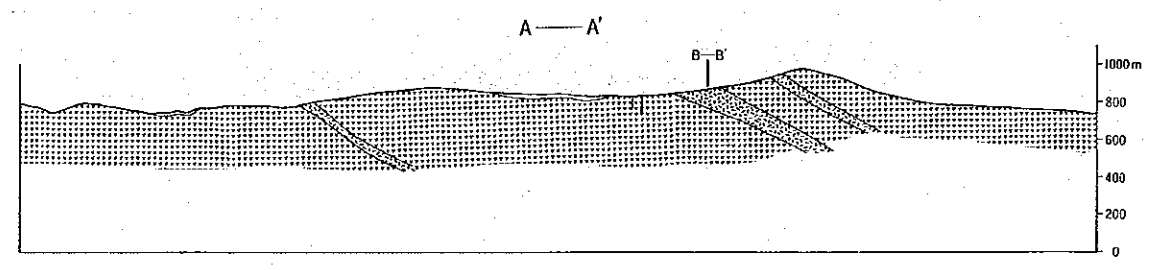
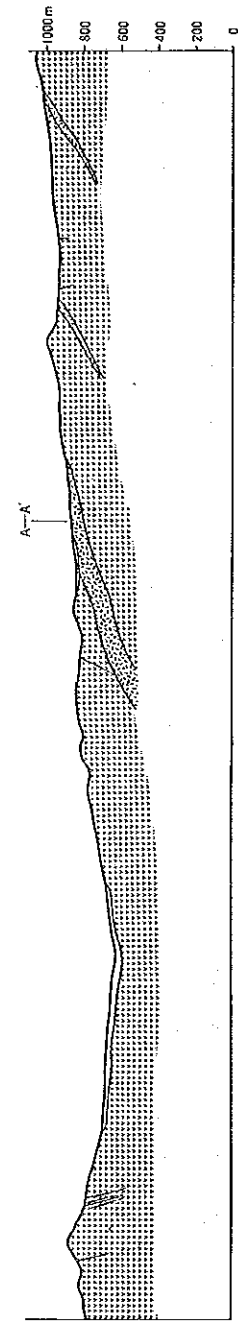
No. 18 MAP GEOLOGIC

ESCALA 1 : 20,000

MAPA DE UBICACION

LEYENDA

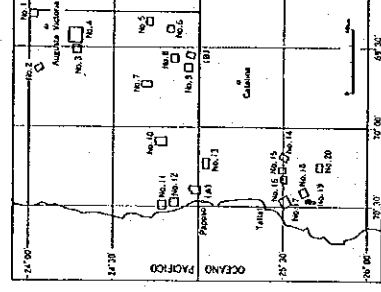
- Arena y grava
- Toba andesitica
- Andesito
- Dique Andesitico
- Veta
- Mina



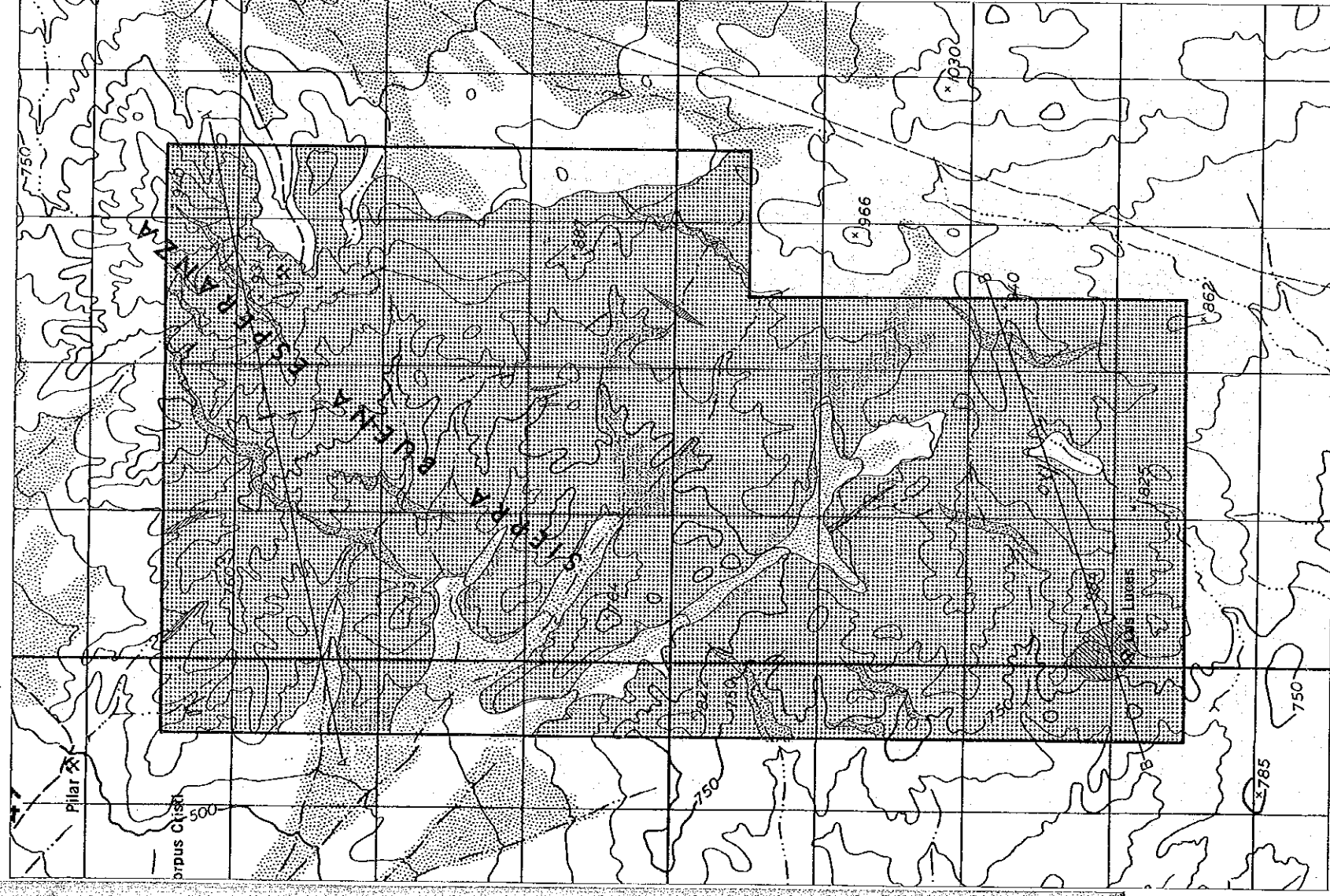
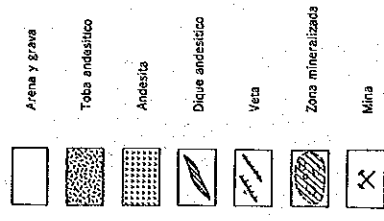
No. 19 MAP GEOLOGIC

ESCALA 1:20,000

MAPA DE UBICACION

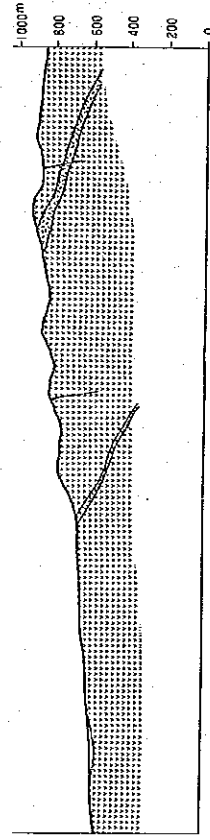


LEYENDA



ESCALA 1:20,000

A—A'



B—B'

