

*Chapter Four:*  
**THEME ZONE AND FACILITIES**



Agua Plaza:  
Actual Pizcon

Plaza de la Agua  
Pasado de la Presente

## Cultural Ribbon: Paseo de la Cultura

Among the highly symbolic urban ribbons, this urban ribbon is to be particularly symbolic, with enhancement of the sense of arrival at the memorial park and the entrance of the Alameda. Furthermore, this ribbon is near the commercial axis, and in order to activate it as the area with the highest round-the-clock character, it will be necessary to have programming of cultural, artistic, and other outdoor performances, including night-time performances. Through such activities and performances, it will be possible to protect traditional culture and encourage artistic activities.

Further, it will be possible to activate the areas along the sub-pedestrians as outdoor galleries where painting, sculpturing and other creative and recreational activities can take place.

In addition to stimulating and encouraging activities of the citizens in these cultural and artistic pursuits, it will be important for this Paseo to be used for the staging of events in the plazas, for the pleasure of the people.

## Memorial Plaza: Plaza de la Conmemoración

In order to enhance the sensation of having arrived at the Simon Bolivar Great Memorial Park, a wall, about 20m wide and 10m tall, is to be constructed on both sides at the intersection of Avenida Ciudad de Quito and Avenida 63. It is to be embellished with a large relief by a Colombian sculptor and is to have the name of a Grand Memorial Wall. On the north side of the east face of the wall, a large cascade is to be provided, and it is to be the point of origin of the canal which is to pass through the Central Library. Canals may be more realistic, in physical terms, for it is to be composed of three or four minor canals.

Further, to the east of the cascade, an amphitheatre is to be provided for use on such occasions as New Year's ceremonies, or presentations of plays, operas and other performances, as well as a place for people to meet, relax and drink while being able to enjoy a view of the cascade and Cultural Ribbon.

• Main facilities  
Amphitheatre, cascade

• Symbol facility  
Memorial wall

• Service facilities  
Kiosks, drinking fountains, tables, administration office, trash lighting and sound control room, telephone booths, park information display board

• Lighting facilities  
Lighting to be provided for the relief and cascade, about 200 kw to be provided for plaza

• Others  
Dust boxes, benches

## Serenade Plaza: Plaza de Serenatas

In addition to using this plaza, which is to be composed of a main stage and a stepped terrace, as a venue for folk songs, serenades and other musical activities by and for the people of the city, it is to be used to present performances of folk songs from all regions of the country, and thereby to contribute to their preservation as well as broader appreciation.

At times such as weekends, permission will be granted for outdoor stalls to be set up, for the further enjoyment of the people.

• Main facilities  
Main stage for choir's edge, stepped terrace

• Symbol facilities  
Monument to music

• Service facilities  
Kiosks, tables, distribution bus stop, drinking fountains, telephone booths, information display board, entrance to Parque El Lago

• Others  
Benches, dust boxes, benches

• Event program  
Serenades by professional singers  
Jan. Folk song concours from pedestrian among districts  
Feb. Bogota citizens serenade concert, folk songs for children  
Mar. Evening concert by famous singers  
Apr. Folk Song Preservation Concert  
May. Intercollegiate Songfest  
June. Folk song concours from person among districts

## Gallery Ribbon-1: Caminos de las Artes

In addition to creating a symbolic space, about 300m long and 50m wide, at the entrance area, the sequential view are to be formed through the combination of the canal, these small plazas, pond, and fountains, shrubbery etc. On both sides of the Main Pedestrian, along small pedestrian spaces may be used outdoor galleries, for display of paintings, sculpture, photographs and the like, in addition to which the ribbon will be activated by way of folk having cultural themes like below.

• Main facilities  
Poetry Plaza, Painting Plaza, Photography Plaza

• Symbol facilities  
Folk monument, painting monument, photography monument

• Lighting  
Small plaza, X kw, other area, 10 kw

• Others  
Benches, and dust boxes at the pond and small plaza Canal, color guard, Main Pedestrian (Traditional Pattern, S.B. Pedestrians)

• Event program  
Amateur photographers, painters, sculptors, illustrators exhibitions  
Folk reading night  
Poetry concours  
Book fair  
Poetry show  
Flower poem concours  
Paper-cut concours  
Line poem concours, poet of the month concours  
Stamp fair  
Folk concours, book fair  
Photography concours

• Main facilities  
Poetry Plaza, Painting Plaza, Photography Plaza

• Symbol facilities  
Folk monument, painting monument, photography monument

• Lighting  
Small plaza, X kw, other area, 10 kw

## Dancing Plaza: Plaza de la Danza

In addition to providing a place for communication and enjoyment by the citizens of Bogota through folk dances, social dancing and other related activities, this plaza will contribute to the preservation of traditional dances of the nation, by providing a place where they may be performed for the benefit of large audiences.

For these activities to take place, it will be necessary to enlist the cooperation of professional and amateur groups, and various individuals, so that well-known, newly created dance compositions may be presented. In addition, on weekends and other occasions, programs should be held whereby visitors may dance and participate in contests.

• Main facilities  
Dancing stage, dancing terrace, ponds

• Symbol facilities  
Monument to dance

• Service facilities  
Administration facilities, tables, telephone booths, distribution bus stop, information display board

• Lighting  
10 kw, other area, 10 kw

• Others  
Benches, dust boxes

• Event program  
Dance Day  
Dancing Night presentation  
District dance contest  
Bogota Citizens Dance Contest  
Famous dance performance  
Traditional Dance Preservation Program  
Bogota Citizens Costume Ball  
Children's folk dance lessons  
Inter-collegiate dance concours

## Ancient Plaza: Plaza de los Aborígenes

A plaza is to be provided, symbolizing Colombia's antiquity, and serving as both the Entrance Plaza for the Latin American Anthropology Museum and the first plaza of the Chronological Ribbon.

In the center of the plaza, a replica of the Grand Written Stone, a symbol of ancient Colombia, is to be set up. In the periphery of the plaza surrounding it, ceremonies of the Orishas, Carib and other tribes will be performed, and Bachue and other legends plays will be presented to children. The plaza thus will be a center for a variety of events.

• Symbol  
Grand Written Stone pond

• Service facilities  
Drinking fountains, tables, telephone booths, information display board

• Lighting  
10 kw

• Others  
Benches, dust boxes

• Event program  
Recall of ceremonies of San'ta Orib'ha  
Recall of ceremonies of San'ta Carib  
Recall of ceremonies of San'ta Aruac  
Recall of ceremonies of San'ta Aquilaria  
Children's park, from the Bachue legends  
Children's park, from the Bachue legends  
Reconstructed archeological site

## Gallery Ribbon-2: Camino de las Esculturas

Seven distinctive landmarks are to be created in the 300m long, 40m wide area from the Serenade Plaza to the Dancing Plaza. This ribbon will be landscaped so as to be suitable for permanent sculpture exhibitions and for concerts. In particular, this ribbon is to provide a place for the display and promotion of the property of modern sculpture.

• Main facilities  
Permanent sculpture exhibition

• Lighting  
Small plaza, X kw, other area, 10 kw

• Others  
Benches, dust boxes, canal and small ponds, color guard, Main Pedestrian (Traditional Pattern, S.B. Pedestrians)

• Event program  
College graduates show  
Bogota Citizens Sculpture Exhibition  
Contemporary Sculpture exhibition  
New Sculptors Show  
School Children's Sculpture Exhibition  
Grand Colombia Sculpture Exhibition  
Older Sculpture Show  
Abstract Art Show

### Chronological Ribbon

Chronological Ribbon is a large mat, about 300m long and 30.50m wide, extending from the Latin America Anthropology into the Aqua Plaza.

It will display the culture and civilization of Latin America and Colombia, featuring a panoramic view of Colombia's colonial period, liberation, and establishment of the Republic, showing to visitors the cultural development of antiquity, the meaning of freedom and independence, and the flow of history.

The colored pavement of the Main Pedestrian will incorporate a chronological table of the nation's history, and in large small plazas in the areas to either side of the Main Pedestrian, displays of symbolic and historical objects, artifacts etc. will be combined with landscaping in a sequence of historical cavalcade.

Ancient ceremonies will be presented in revival, memorial ceremonies in honor of historical events, and special programs for schoolchildren could be among the attractions.

### ASEDILIA LA LIBERTAD

### Plaza de los Comercios

### Plaza de los Precursos

### Plaza de la Libertad

### Ancient Picture Scroll: Sendero de la Cultura Prehispanica

This scroll, about 300m long and 30.50m wide, is to feature six decorative spaces created by landscaping on both sides of the Main Pedestrian.

Urban patterns, symbolizing of India's civilization, the six epochs and huge stone structures and other symbols, and murals are to be used.

Further, the Main Pedestrian, in addition to having colored pavement featuring historical Caribbe graphics patterns, will have colored pavements of the nation's chronology, featuring events from each period of history.

- Symbol: Big stone forms, statues
- Lighting: Symbol facilities and garden, 20 lux, other areas, 10 lux
- Offices: Areas garden, Moss garden, Moss garden, Moss garden, coral and small ponds, colored pavement, Main Pedestrian, traditional pavement, benches, dust boxes, information boards
- Event program: Video Booths Festival (Africa Day, Venezuela Day, Moss Day, Moss Day)

### Spanish Plaza: Plaza de la Hispanidad

A Spanish Garden is to be made. It will have in it the Columbus Plaza, Marriage Plaza, and a Spanish Village. It is thought that this will be where events such as those commemorating the discovery of the New World by Columbus, to the age of colonization, and those related to social phenomena, are staged.

- Main facility: Spanish building including cafe, book store, telephone booths, rest house
- Symbol: Marriage monument, Statue of Cristo
- Service facilities: Drinking fountains, circulation bus stop
- Offices: Columbus Plaza, Marriage Plaza, Spanish Village, Cristo Plaza, pergola, benches, dust boxes, information boards
- Lighting: Symbol and plaza, 50 lux
- Event program: Columbus Day gathering, Cultural displays, Spanish dances, Marriage festival, Cristo festival

### Independence Picture Scroll: Sendero de la Independencia

This scroll extends a distance of about 300m from the Spanish Plaza to the Gran Colombia Plaza and is about 40m wide.

Here, a panorama is unveiled, depicting the period from colonization to liberation and unification as Gran Colombia.

In addition to recording major events of history, the Main Pedestrian will have to effect side stories of heroes and heroines of the struggle for independence.

Further, in addition to having places to commemorate the victories at Caragaya and Boyaca, there will be a large place to forever honor all of the unknown patriots who gave their lives for their country, thus making this a picture scroll of Colombia's independence.

- Symbol: Patriotic Monument, Urban Freedom Fighters Monument
- Lighting: Plaza and small plaza, 20 lux, symbols and other areas, 10 lux
- Offices: Pergolas, benches, dust boxes, Main Pedestrian with historical chronology and traditional pavement, S&A Pedestrians
- Events: Children's Park of the Heroes, Caragaya's Struggle Festival, Boyaca Victory Festival, Nueva Granada Festival

### Republic Plaza: Plaza del Republicas

As the end of the Chronological Ribbon, the Gran Colombia Plaza is provided to honor Simon Bolivar and the heroes of the fight for independence, and to symbolize the friendship of the Andean nations.

A monument is to be set off in the midst of an expanse of lawn, and in a radial pattern extending from it there are to be the places of the Andean nations. In each of the places, seating spaces will be provided, and the national flag and colors of each nation shall be included in the central part, subordinate spaces in the form of grass areas are to be provided for various events such as National Day celebrations, which can contribute to deepening ties among the Andean nations, and for other purposes.

- Symbol: Monument of Gran Colombia
- Service facilities: Book store, drinking fountains, telephone booths
- Lighting: Symbols and plaza, 100 lux
- Offices: Benches, dust boxes, pergolas, Venezuela, Colombia, Bolivia, Ecuador and Peru Square Gardens, with national flags and flowers
- Event program: Andes Children's Party, Folk songs and dances of the Andean nations, Independence Day celebrations

### Actual Ribbon

This is to serve as a venue for publicizing the social, economic and political development of the Colombian nation, and to provide a place for public expression of thoughts, attitudes and beliefs, and thus is to have a strong element of communication. It will be a high-amenity space because of the high density of visitors who will come here due to the way that pedestrian flows will bring many people here.

from  
Ped  
treat  
Wate  
Impo  
clude  
case  
which  
rich  
Land  
The  
30.50  
Pede  
pave  
Pede  
reey  
low  
May  
trou  
a dis  
on  
area  
tree  
tree  
from  
the  
Ligh  
In o  
and  
time  
in I  
Spe  
and  
ese  
tem  
und  
text  
ever  
Eve  
In I  
cha  
ped  
plan  
act  
this  
Gar  
ven  
abo  
thes  
pro  
joya  
pub  
well

Theme Plazas to the Gardening Pedestrian, in accordance with the themes and treatment of the ribbons.

Water use facilities

Important components of the Alameda to include a south-to-north canal, ponds, fountains, cascades and other water features in variety, which all contribute to and heighten the beauty of the Alameda scenery.

Landscaping

The organization of the landscaped ribbon of 50m width is to be provision of a Main Pedestrian (having a traditional graphic pavement pattern) of about 6m width, and Sub Pedestrian (for strolling, consistent with the relevant themes) of about 2m width, with lawn, flower plantings, shrubbery etc. between the Main and Sub Pedestrians, and with provision made for enjoying the foreground landscape to a distance of 50-80m. To contain the landscape, on both sides of this landscaped, gardening trees, row plantings of trees are to be used. The trees on one side are to also function as street trees on Calle 63. Trees on both sides are to form a skyline to be made so as to conform to the nature of the themes.

Lighting

In order to make round-the-clock use possible, and also to insure safety, lighting is to be 20-50 times as bright as the lights provided for safety of the park, and because of requirement for special events and to emphasize water features and symbols, plaza lighting will be higher than elsewhere. It is expected that installation of temporary lighting will be suitable at times when unusually large-scale or important entertainment events are staged during the evening.

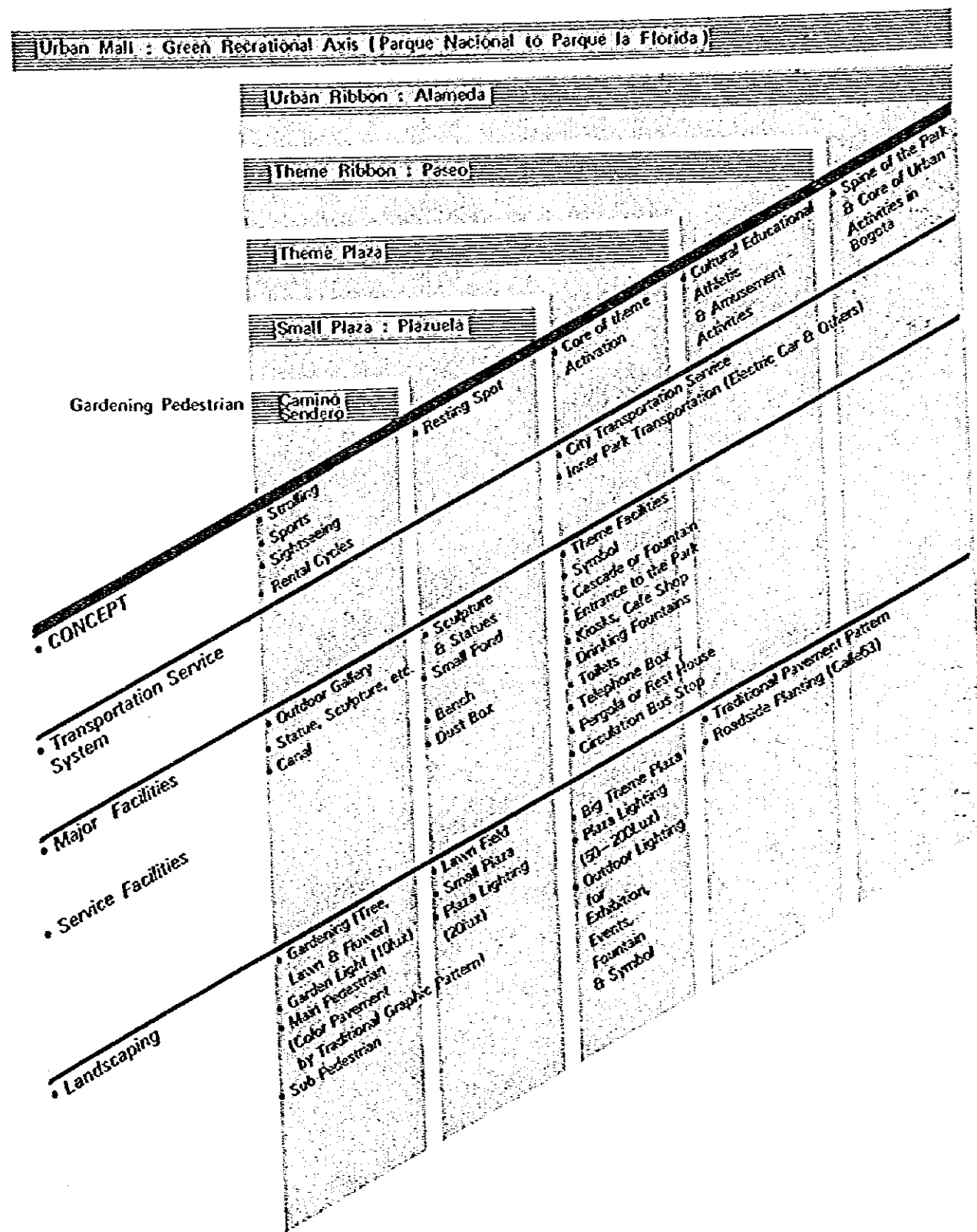
Event program

In contrast to the large (110 hectares) park characterized by a natural environment and peaceful, moderate activities, it is necessary to plan on increasing the use of the Alameda as activated Ribbon with distinct themes. From this viewpoint, in addition to creating plazas and Gardening Pedestrians which are to serve as venues for activities such as are described above, it is necessary to provide assurance that these activities do take place, by planning a program of events which is attractive and enjoyable to large numbers of people, and publicizing the program among the citizens, as well as properly implementing the program. It

will also be important to establish system whereby requests related to the program, from

the citizens and various groups, can properly be handled.

Fig. - 30 Module of Urban Ribbon



# Urban Ribbon

## Natural Recreational Axis in Bogota: Urban Mall

It is desirable that a Natural Recreational Axis be developed for the distance of about 15 km along Calle 63 which intercepts Bogota in a southeast-northwest direction, from the Forest Conservation Parque Nacional in the southern mountains to the Rio Bogota Riverside Open Space and Parque la Florida in the north. In addition to becoming the "face" of Bogota, as an avenue for leisure and recreational activities of the city's residents, it should be improved as an Urban Mall which is characterized by a varying landscape and has value as an international tourism asset.

## Core of the Park: Urban Ribbons

The 3.4 km distance from Avenida Ciudad de Quito to Jardin Botanico, along the Simon Bolivar Great Memorial Park within the Urban Mall, as a center for the cultural, educational and recreational activities of the Bogota citizens, is assigned the status of Urban Ribbons, to give greater prominence and augment the commemorative and symbolic nature of Simon Bolivar Great Memorial Park.

Leisure activities in the great cities of the world now show a tendency toward greater diversification, improved quality, and round-the-clock use, together with increased demand for such activities. Similar to what may be witnessed elsewhere in the world, demand for leisure activities, including the capacity of enjoying those activities around the clock, is increasing in Bogota, and it is desirable to provide safe, high-quality facilities in response to that increase and change in demand. From this viewpoint, the Urban Ribbons are to be a wholesome, high-quality core of a diversity of cultural, educational and recreational activities.

Fig. - 28 Concept of Urban Ribbon

Name of Ribbon	Theme	Theme Color	Theme Pattern
Cultural Ribbon	Colombian Culture	Purple	
Chronological Ribbon	Colombian History	Red	
Liberty Ribbon	Colombian Independence	Orange	
Actual Ribbon	Colombians Today	Yellow	
Youth Ribbon	Colombians' Future	Blue	
Natural Ribbon	Colombian Nature	Green	

## Urban Ribbon

The Urban Ribbons is to be composed of six cintas of 300 to 1,000 m, each characterized by its own theme. At the same time that each ribbon is to possess its distinctive theme composed of cultural, educational, recreational or other elements, each is to have a plaza, each of which is to have an distinctive identity, reinforced by an emphasis on a different basic theme color in each, gardens, and pavement featuring traditional graphic patterns, which shall, in combination, make the ribbons places where events, including those which may be appropriately matched to each ribbon's theme, may be held.

Moreover, as stated in the above note, "Core of the Park," each of the six ribbons are to be provided with lighting appropriate to their being used in the evening, to be planned and to have features which assure the safety of visitors, as well as to facilitate the holding of various activities and programs related to the themes of the ribbons; in addition, the service facility supply standards as well as the location of the facilities are to be such as insure that those activities are of high quality. The changing scenery and incorporation of scenery beyond the ribbons into that of the ribbons themselves is to further enhance their function.

At the same time as the Urban Ribbons are a receptacle within which various activities can take place, it is highly important that in order to augment the vitality of the ribbons, an annual program of events is to be planned and managed by the competent authorities, who shall suitably publicize these attractions.

The main themes of the six ribbons comprising the Urban Ribbons are the culture, history, nature and future of Colombia, and Colombia today, as follows.

## Systems and Modules of Alameda

The modules of Alameda are to be defined in terms of controlled presentation of a varying landscape, and refreshing pathways. The foreground is to be of 50-80m depth and as a unit of Gardening Pedestrians, it is to have expansive spaces, and distinctive gardens. It also is to have spaces for resting, composed of alcoves and small plazas. The middle ground, of 200-300m depth, is to feature plazas which are to function as activity cores for each theme ribbon, to augment the activity of each ribbon through the plazas' possessing consistency with each theme. The foreground, 500-1,000m in depth, in addition to unfolding the theme and story which unifies each theme ribbon, is to have visual completeness by means of a traditional graphic pattern and use of color for the main pedestrian area each to be different in accordance with the different themes.

To facilitate perception of the Alameda as a whole, a single variety of street tree is to be planted along Calle 63 for the entire 3.4 km length, so that those who pass up and down the avenue by car may see the ribbon scenery beyond the vertical procession of tree trunks, and the two ends of the 3.4km distance will be emphasized by placement, at each end, of a large symbolic wall and large trees.

Location standards for the transportation service system, main facilities, symbol facilities, service facilities, lighting, landscaping, etc. will be determined according to the four visual and functional stanzas on which the modules are based.

### • Transportation service system

Transportation service in the park will be by means of a system of city circulation buses using roads on the periphery of the park. Bus stops are to be provided in each Theme Plaza.

As a sub-system, non-polluting small electric (battery) cars may be available within the park.

Amusement may be combined with functional objectives, but transportation is primarily to be by means of buses. Consideration is also to be given to a bicycle rental facility for non-competitive cycling.

### • Facility distribution

Service and administrative facilities are to conform to a higher standard than in the park; fundamentally they are to be located in the Theme Plazas in the interests of effective, efficient use. Symbols are to be suitably located

Theme Plazas to the Gardening in accordance with the themes and the ribbons.

Components of the Alameda to include north canal, ponds, fountains, and other water features in variety, contribute to and heighten the Alameda scenery.

The landscaped ribbon of the Alameda is to be provision of a Main (having a traditional graphic pattern) of about 6m width, and Sub (for strolling, consistent with the themes) of about 2m width, with lawn, plantings, shrubbery etc. between the Sub Pedestrians, and with provision of 50-80m. To contain the landscape, sides of this landscaped, gardening plantings of trees are to be used. The one side are to also function as street Calle 63. Trees on both sides are to be made so as to conform to the themes.

to make round-the-clock use possible, insure safety, lighting is to be 20-50 right as the lights provided for safety determined according to the four visual and functional stanzas on which the modules are based.

It is expected that installation of lighting will be suitable at times when large-scale or important events are staged during the

large-scale or important events are staged during the

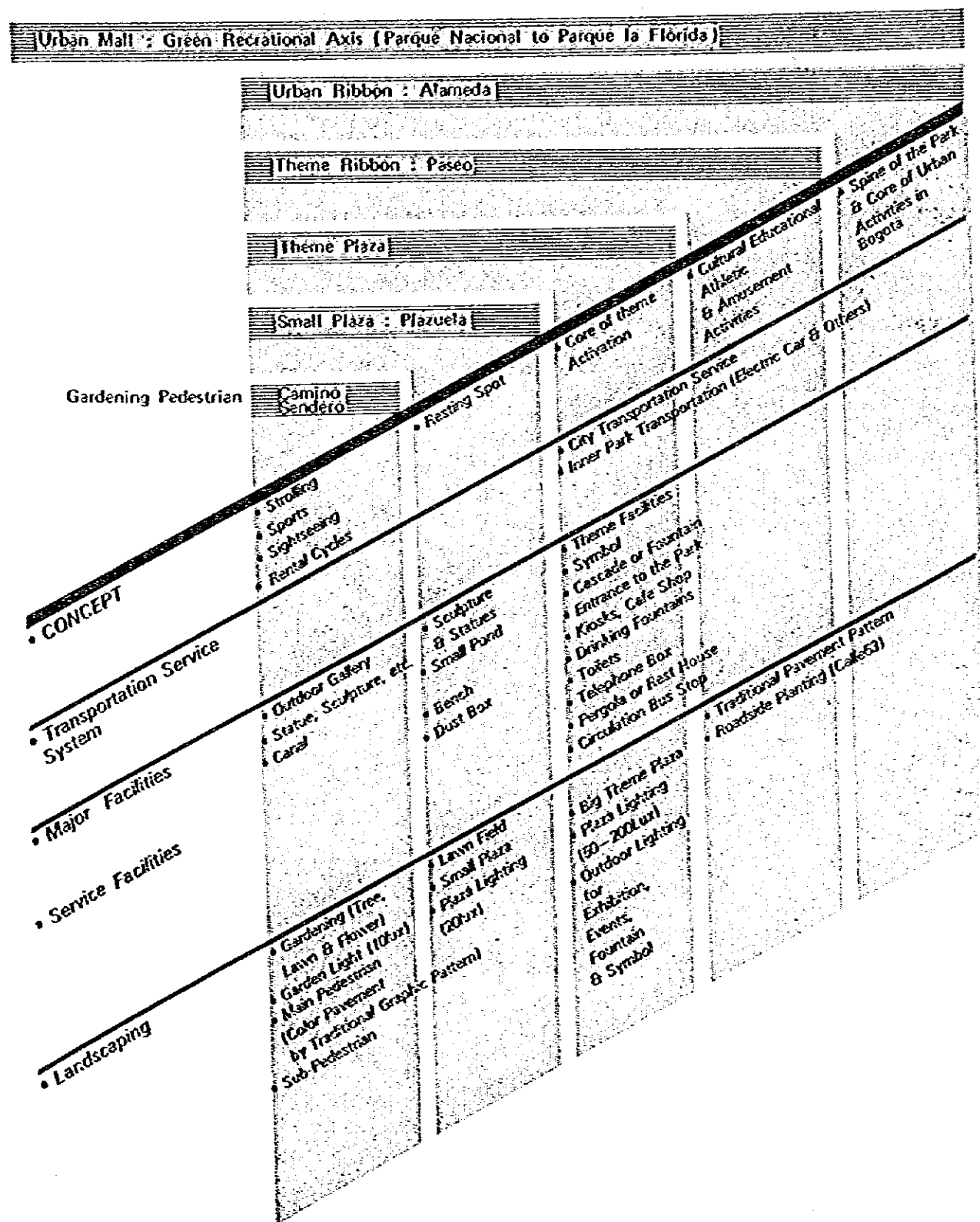
to the large (110 hectares) park and Alameda, as well going by carriage whereby amusement may be combined with functional objectives, but transportation is primarily to be by means of buses. Consideration is also to be given to a bicycle rental facility for non-competitive cycling.

It is necessary to provide assurance that activities do take place, by planning a series of events which is attractive and enjoyable to large numbers of people, and to implement the program among the citizens, as properly implementing the program. It

will also be important to establish system whereby requests related to the program, from

the citizens and various groups, can properly handled.

Fig. - 30 Module of Urban Ribbon



Theme Plazas to the Gardening Pedestrian, in accordance with the themes and character of the ribbons.

Water use facilities

Important components of the Alameda to include a south-to-north canal, ponds, fountains, cascades and other water features in variety, which all contribute to and heighten the richness of the Alameda scenery.

Landscaping

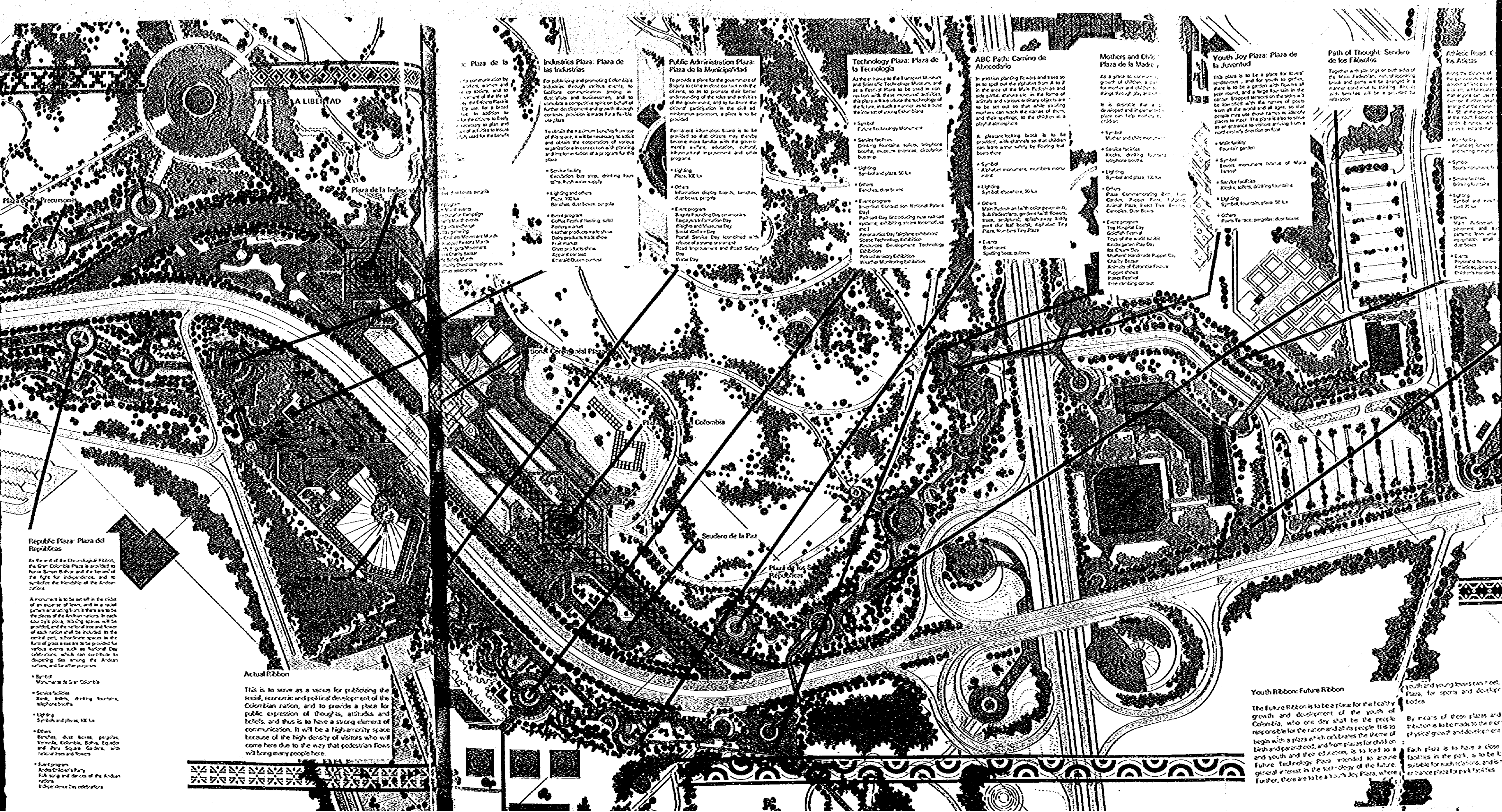
The organization of the landscaped ribbon of 50m width is to be provision of a Main Pedestrian (having a traditional graphic pavement pattern) of about 6m width, and Sub Pedestrian (for strolling, consistent with the relevant themes) of about 2m width, with lawn, flower plantings, shrubbery etc. between the Main and Sub Pedestrians, and with provision for enjoying the foreground landscape to a distance of 50-80m. To contain the landscape, on both sides of this landscaped, gardening areas, row plantings of trees are to be used. The trees on one side are to also function as street trees on Calle 63. Trees on both sides are to form a skyline to be made so as to conform to the nature of the themes.

Lighting

In order to make round-the-clock use possible, and also to insure safety, lighting is to be 20-50 times as bright as the lights provided for safety of the park, and because of requirement for social events and to emphasize water features and symbols, plaza lighting will be higher than elsewhere. It is expected that installation of temporary lighting will be suitable at times when unusually large-scale or important entertainment events are staged during the evening.

Event program

In contrast to the large (110 hectares) park characterized by a natural environment and peaceful, moderate activities, it is necessary to plan on increasing the use of the Alameda as a landscaped Ribbon with distinct themes. From this viewpoint, in addition to creating plazas and Gardening Pedestrians which are to serve as venues for activities such as are described above, it is necessary to provide assurance that these activities do take place, by planning a program of events which is attractive and enjoyable to large numbers of people, and publicizing the program among the citizens, as well as properly implementing the program. It



**PAIS DE LA LIBERTAD**

**Republic Plaza: Plaza del Repúblicas**

As the end of the Chronological Ribbon, the Gran Colombia Plaza is provided to honor Simon Bolivar and the herald of the fight for independence, and to symbolize the friendship of the Andean nations.

A monument is to be set off in the midst of an expanse of lawn, and in a radial pattern emanating from it there are to be the names of the Andean nations. In each country's plaza, seating spaces will be provided, and the national tree and flower of each nation shall be included. In the central part, subordinate spaces in the form of grass areas are to be provided for various events such as National Day celebrations, which can contribute to deepening ties among the Andean nations, and for other purposes.

- Symbol: Monument to Gran Colombia
- Service facilities: Kiosks, tables, drinking fountains, telephone booths
- Lighting: Symbol and plaza, 300 Lx
- Other: Benches, dust boxes, pergolas, Veneza, Colombia, Boliva, Ecuador and Peru Square Gardens, with national trees and flowers
- Event program: Andean Children's Party, Folk song and dances of the Andean nations, Independence Day celebrations

**Actual Ribbon**

This is to serve as a venue for publicizing the social, economic and political development of the Colombian nation, and to provide a place for public expression of thoughts, attitudes and beliefs, and thus is to have a strong element of communication. It will be a high-amenity space because of the high density of visitors who will come here due to the way that pedestrian flows will bring many people here.

**Plaza de la Libertad**

For communication by a school, women and young people, and for the use of the Plaza for a broad use. In addition to the functions mentioned, it is necessary to plan and carry out activities to insure the use of the Plaza for the benefit of the community.

**Plaza de la Independencia**

For the use of the Plaza for the benefit of the community. It is necessary to plan and carry out activities to insure the use of the Plaza for the benefit of the community.

**Industries Plaza: Plaza de las Industrias**

For publicizing and promoting Colombia's industries through various events, to facilitate communication among disciplines and businesses, and to stimulate a competitive spirit on behalf of further development and growth through contests, provision is made for a flexible use of the Plaza.

To obtain the maximum benefits from use of this space, it will be necessary to solicit and obtain the cooperation of various organizations in connection with planning and implementation of a program for the Plaza.

- Service facility: Concession bus stop, drinking fountains, fresh water supply
- Lighting and other: Plaza, 100 Lx; Benches, dust boxes, pergola
- Event program: Coffee Festival, Festival, Fair, Market, Teacher products trade show, Dairy products trade show, Fruit market, Glass products show, Record contest, Emerald Queen contest

**Public Administration Plaza: Plaza de la Municipalidad**

To provide a place for the government of Bogotá to come in close contact with the citizens, so as to provide for a better understanding of the ideas and activities of the government, and to facilitate the citizens' participation in the civil administration process, a plaza is to be provided.

Former information board is to be provided so that citizens may thereby become more familiar with the government's activities, education, cultural, intellectual improvement and other programs.

- Lighting: Plaza, 100 Lx
- Other: Information display boards, benches, dust boxes, pergola
- Event program: Bogotá Founding Day ceremonies, Teachers Information Day, Weights and Measures Day, School products Day, Postal Service Day, combined with release of stamps on postage, Road Improvement and Road Safety Day, Water Day

**Technology Plaza: Plaza de la Tecnología**

As the entrance to the Transport Museum and Science Technology Museum, and as a Festival Plaza to be used in connection with these museums' activities, the Plaza is to provide the technology of the future, in such a manner as to arouse the interest of young Colombians.

- Symbol: Future Technology Monument
- Service facilities: Drinking fountains, tables, telephone booths, museum entrance, children bus stop
- Lighting: Symbol and plaza, 30 Lx
- Other: Benches, dust boxes
- Event program: Bogotá Founding Day ceremonies, National Parks Day, Pollard Day, introducing new salted species, exhibiting plant specimens, etc., Agriculture Day, (airplane exhibition), Space Technology Exhibition, Postmodern Development Technology Exhibition, Paleontology Exhibition, Weather Monitoring Exhibition

**ABC Path: Camino de Alfabecario**

In addition planting flowers and trees so as to mark out the path from Sum A to Z in the area of the Main Pedestrian and side paths, statues etc. in the form of animals and various ordinary objects are to be set out so that while walking children can learn the alphabet, to the children in a playful atmosphere.

A pleasure taking book is to be provided, with chapters so that children can learn their safety by following the book's story.

- Symbol: Alphabet monument, numbers monument
- Lighting: Symbol, elsewhere, 20 Lx
- Other: Main Pedestrian path color pavement, Sub Pedestrian, grass lawn flowers, trees, sculptures, splash way kiddy pool (for half boys), Alphabet, Try Park, Numbers Try Park
- Events: Boat races, Spelling bees, quizzes

**Mothers and Child Plaza: Plaza de la Madre**

As a place to commemorate the growth of children, a park for mothers and children to stroll through play and games.

It is desirable that a developed and implemented place can help mothers to educate their children.

- Symbol: Mother and Child monument
- Service facilities: Kiosks, drinking fountains, telephone booths
- Lighting: Symbol and plaza, 100 Lx
- Other: Plaza, Commemorating Birth, Sun Garden, Puppet Park, Folklore, Animal Plaza, Post Tree, Benches, Consoles, Dust Boxes
- Event program: Toy Hospital Day, Goodish Festival, Toys of the world, Kiddy garden, Kiddy garden, Kiddy garden, Kiddy garden, Mothers' Handmade Puppet Day, Charity Bazaar, Animals of Colombia Festival, Puppet Shows, Insect Festival, Tree-planting contest

**Youth Joy Plaza: Plaza de la Juventud**

This plaza is to be a place for lovers' rendezvous... and for youth to gather. There is to be a garden with flowers at the year round, and a large fountain in the center. Stopped terraces on the sides and paths from all the world and all ages, so that people may use those names to identify places to meet. The plaza is also to serve as an entrance to visitors arriving from a northeastern direction on foot.

- Main facility: Fountain garden
- Symbol: Lovers' monument, statue of Maria Teresal
- Service facilities: Kiosks, tables, drinking fountains
- Lighting: Symbol, fountain, plaza 50 Lx
- Other: Plaza Terrace, pergola, dust boxes

**Path of Thought: Sendero de los Falsos**

Together with planning on both sides of the Main Pedestrian, natural stepping blocks and paths will be arranged in a manner conducive to walking. Arcades with benches will be provided for relaxation.

- Main facility: Arcades, pergola, drinking fountains
- Symbol: Fountain monument to Maria Teresal
- Service facilities: Drinking fountains
- Lighting: Symbol and plaza, 100 Lx
- Other: Plaza Terrace, pergola, dust boxes

**Adolescent Road: Camino de los Adolescentes**

Along the course of the main path, to be used for the purpose of the youth, there are to be various facilities for their use. Further, the youth are to be encouraged to use the youth facilities. As an entrance to the youth facilities, the youth facilities are to be provided.

- Main facility: Amusement center, drinking fountains
- Symbol: Fountain monument to Maria Teresal
- Service facilities: Drinking fountains
- Lighting: Symbol and plaza, 100 Lx
- Other: Main Pedestrian pavement, and equipment, small dust boxes
- Events: Physical fitness contest, Athletic equipment, Children's festival

**Youth Ribbon: Future Ribbon**

The Future Ribbon is to be a place for the healthy growth and development of the youth of Colombia, who one day shall be the people responsible for the nation and all its people. It is to begin with a plaza which celebrates the theme of birth and parenthood, and from plazas for children and youth and their education, is to lead to a Future Technology Plaza intended to arouse general interest in the technology of the future. Further, there are to be a Youth Joy Plaza, where

young and young lovers can meet. Plaza, for sports and decorative kiosks. By means of these plazas and terraces is to be made to be the physical growth and development. Each plaza is to have a close facilities in the park, is to be suitable for such relations, and entrance plaza for park facilities.

**Technology Plaza: Plaza de la Tecnología**

As the entrance to the Transport Museum and Science Technology Museum, and as a Plaza to be used in connection with these museums, activities, the plaza will include the technology of the future in such a manner as to arouse the interest of young Colombians.

- Symbol: Future Technology Monument
- Service facilities: Drinking fountains, toilets, telephone booths, museum entrance, direction busstop
- Lighting: Symbol and plaza 50 kw
- Others: Benches, dust boxes
- Event program: Invention Contest for National Parade Day, Road Day (considering new school systems, exhibiting stream boundaries, etc.), Aeronautics Day (airplane exhibition), Space Technology Exhibition, Robotics Development Technology Exhibition, Penetration Exhibition, Amateur Monitoring Exhibition

**ABC Path: Camino de Abecedario**

In addition to planting flowers and trees to spell out the alphabet from A to Z in the area of the Main Pedestrian and the path, statues etc. in the form of letters and words, and to try to make it to be set out so that while strolling mothers can teach the names of them, and their spellings, to the children in a playful atmosphere.

- Symbol: Mother and child monument
- Service facilities: Kiosks, drinking fountains, toilets, telephone booths
- Lighting: Symbol and plaza, 100 kw
- Others: Plaza Commemorating Birth, Plum Garden, Puppet Plaza, Folklore, Animal Plaza, Insect Tree, Benches, Canopies, Dust Bins
- Event program: Toy Hospital Day, Golden Festival, Toys of the world exhibit, Kindergarten Day, Ice Cream Day, Mothers' Hand-made Puppet Day, Charity Bazaar, Academy of Colombia Festival, Puppet Show, Insect Festival, Tree climbing contest
- Events: Bicycles, Sporting bins, equines

**Mothers and Child Plaza: Plaza de la Madre y el Niño**

As a place to commemorate birth and growth of children, a plaza is provided for mother and children to learn various things through play and other activities.

It is desirable that a program be developed and implemented so that the plaza can help mothers to raise their children.

- Symbol: Mother and child monument
- Service facilities: Kiosks, drinking fountains, toilets, telephone booths
- Lighting: Symbol and plaza, 100 kw
- Others: Plaza Commemorating Birth, Plum Garden, Puppet Plaza, Folklore, Animal Plaza, Insect Tree, Benches, Canopies, Dust Bins
- Event program: Toy Hospital Day, Golden Festival, Toys of the world exhibit, Kindergarten Day, Ice Cream Day, Mothers' Hand-made Puppet Day, Charity Bazaar, Academy of Colombia Festival, Puppet Show, Insect Festival, Tree climbing contest
- Events: Bicycles, Sporting bins, equines

**Plaza: Plaza de la Juventud**

To be a place for lovers and for youth to gather in a garden with flowers all year long, a large fountain in the center, and on the sides all the names of sports and all ages, so that visitors can identify themselves. The plaza is also to serve as a visitors arriving from a direction on foot.

- Symbol: Youth monument
- Service facilities: Kiosks, drinking fountains, toilets, telephone booths
- Lighting: Symbol and plaza, 100 kw
- Others: Plaza Commemorating Birth, Plum Garden, Puppet Plaza, Folklore, Animal Plaza, Insect Tree, Benches, Canopies, Dust Bins
- Event program: Toy Hospital Day, Golden Festival, Toys of the world exhibit, Kindergarten Day, Ice Cream Day, Mothers' Hand-made Puppet Day, Charity Bazaar, Academy of Colombia Festival, Puppet Show, Insect Festival, Tree climbing contest
- Events: Bicycles, Sporting bins, equines

**Path of Thought: Sendero de los Filósofos**

Topical with paintings on both sides of the Main Pedestrian, related supporting book and paths will be arranged in a manner conducive to thinking. Avenues with benches will be provided for relaxation.

- Symbol: Youth monument
- Service facilities: Kiosks, drinking fountains, toilets, telephone booths
- Lighting: Symbol and plaza, 100 kw
- Others: Plaza Commemorating Birth, Plum Garden, Puppet Plaza, Folklore, Animal Plaza, Insect Tree, Benches, Canopies, Dust Bins
- Event program: Toy Hospital Day, Golden Festival, Toys of the world exhibit, Kindergarten Day, Ice Cream Day, Mothers' Hand-made Puppet Day, Charity Bazaar, Academy of Colombia Festival, Puppet Show, Insect Festival, Tree climbing contest
- Events: Bicycles, Sporting bins, equines

**Athletic Road: Camino de los Atletas**

Along the distance of about 400m from the gymnasium to the Jordan Entrance, wooden athletic play equipment, football area, etc. will be located in such a manner that anyone can use them for play and exercise. Further, small plazas are to be arranged at the intersection of Av. 28 and Av. 29, at the gymnasium entrance, and at the Youth Ribbon end, in front of the Jordan Entrance, where there will be places to rest and chat.

- Main facility: Athletic equipment made of wood, rope and metal, miniature football courts
- Symbol: Sports monument, health monument
- Service facilities: Kiosks, drinking fountains, toilets, telephone booths, direction bus stop
- Lighting: Symbol and plaza, 100 kw
- Others: Main Pedestrian (with colored pavement and traditional graphic patterns), lawn area (wooden athletic equipment), small plaza, benches, dust boxes
- Events: Physical skills contest, Athletic equipment race, Children's tree climbing race

**Athletic Plaza: Plaza de los Deportes**

As the entrance to the Sports Complex, and as the Main Plaza of the Athletic Road, the Athletic Plaza will be a multipurpose space for various athletic activities.

These activities should include many as part of a program, in which participation by youth and to young citizens may be easily accomplished, and the plaza is therefore intended to contribute to the promotion of recreation through sports.

- Symbol: Sports monument
- Service facilities: Kiosks, drinking fountains, toilets, telephone booths, direction bus stop
- Lighting: Symbol and plaza, 100 kw
- Others: Large plaza with a hard surface (black pavement with cast blocks in which are signatures of the various sports), benches, people, dust boxes
- Event program: Bogota Games Marathon, Bogota Bicycle Race, Youth race around the park, Am. Wrestling championship meet, Guinness Book record attempts, Roller skating race, Strength contests (leg of war, etc.), Mini football games for children, Rope climbing contest by father-son teams

**Flowering Plaza: Plaza de los Flores**

Besides being the Main Entrance Plaza for the Jordan Entrance, the Flowering Plaza will be a beautiful place symbolizing Colombia, which exports large quantities of cut flowers to many countries. It will also be a focal point for a campaign to beautify Bogota with flowering plants. Events here will offer the National Ribbon and be large in scale.

- Symbol: Spread of flowers monument
- Service facilities: Kiosks, telephone booths, drinking fountains
- Lighting: Gardens, 10 kw
- Others: Benches, dust boxes
- Event program: Ornamental plant contest, Fundraising sale, Beauty Bogota movement activities (e.g., the distribution of seeds), Rose contest, Competition show, Christmas horticulture, Plant donation drive, Lectures on plants and flowers

**Giant Tree Plaza: Plaza de los Árboles**

As a suitable entrance to the Jordan Entrance, and as an entrance plaza for Avenida and Simon Bolivar Great Memorial Park, a plaza is to be set out in such a manner as to heighten the sense of arrival and to be the place of the National Ribbon, a symbolic gate tree is to be planted here in the plaza.

- Symbol: Gate tree
- Service facilities: Kiosks, telephone booths
- Lighting: Gate tree, plaza 10 kw
- Others: Benches, dust boxes
- Event program: Flower and plant sale, Plant donation drive, Christmas tree, Decoration of the Christmas tree (Gate Tree), Sale of Christmas trees, Christmas cards

**Natural Ribbon (Prologue of urban Ribbon)**

The Natural Ribbon, like the Cultural Ribbon, is intended to serve as a gateway with a sense of arrival for approach to the Urban Ribbon and Simon Bolivar Great Memorial Park. It is important to provide symbolic scenery in this area.

At the same time, the Ribbon will have a flower and green plaza, introducing a rich quality of Colombian and Andean plants and flowers.

Its plazas will identify an approach to park facility and give various rich street scenes.

**Youth Ribbon: Future Ribbon**

The Future Ribbon is to be a place for the healthy growth and development of the youth of Colombia, who one day shall be the people responsible for the nation and all its people. It is to begin with a plaza which celebrates the theme of birth and parenthood, and from plazas for children and youth and their education, is to lead to a Future Technology Plaza, intended to arouse general interest in the technology of the future. Further, there are to be a Youth Joy Plaza, where

youth and young lovers can meet, and an Athletic Plaza, for sports and development of sound bodies.

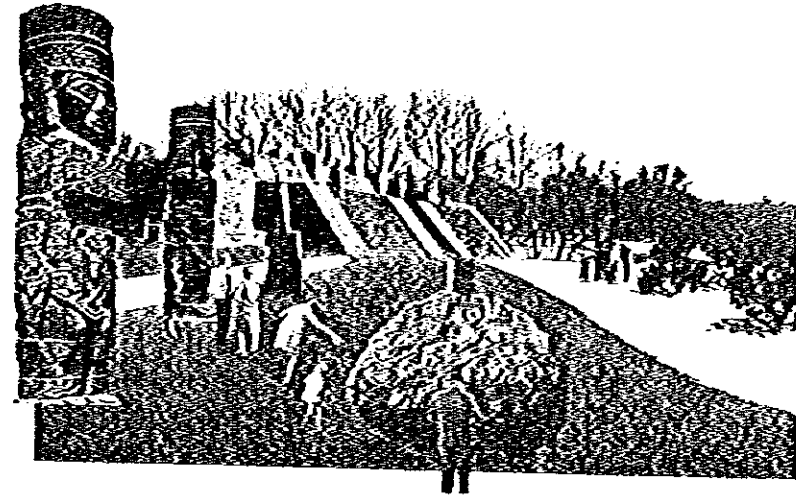
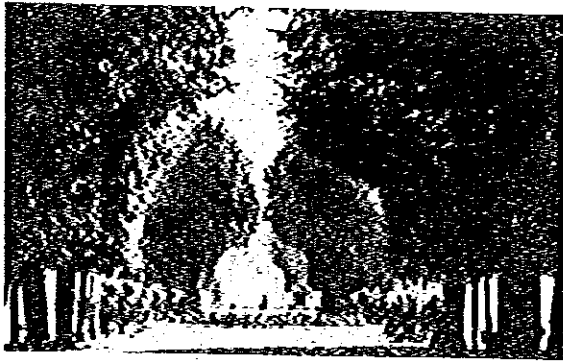
By means of these plazas and malls, a contribution is to be made to the mental, spiritual and physical growth and development of youth.

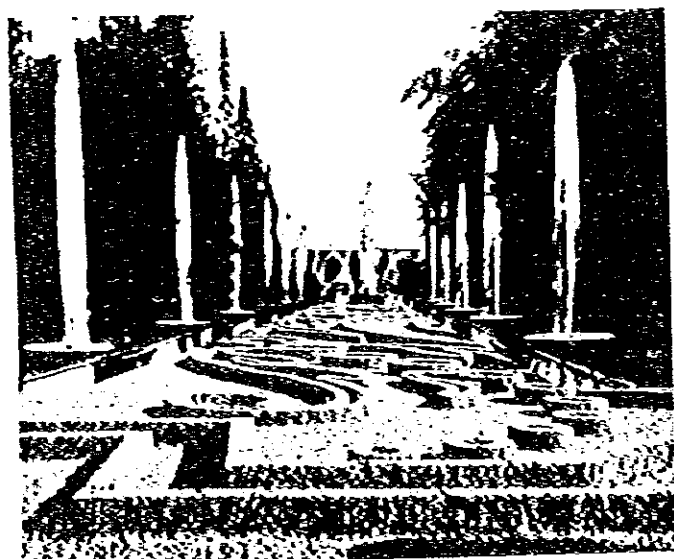
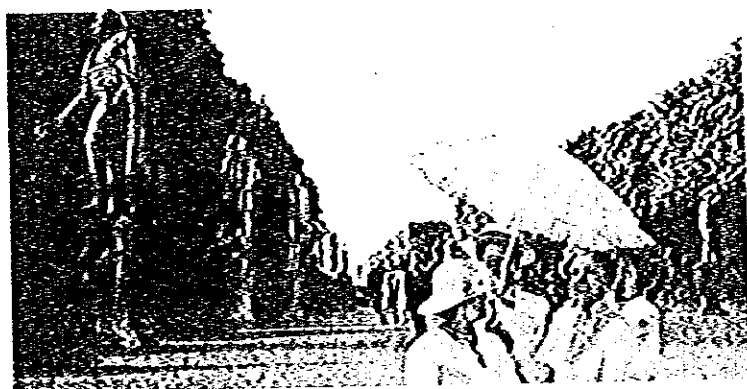
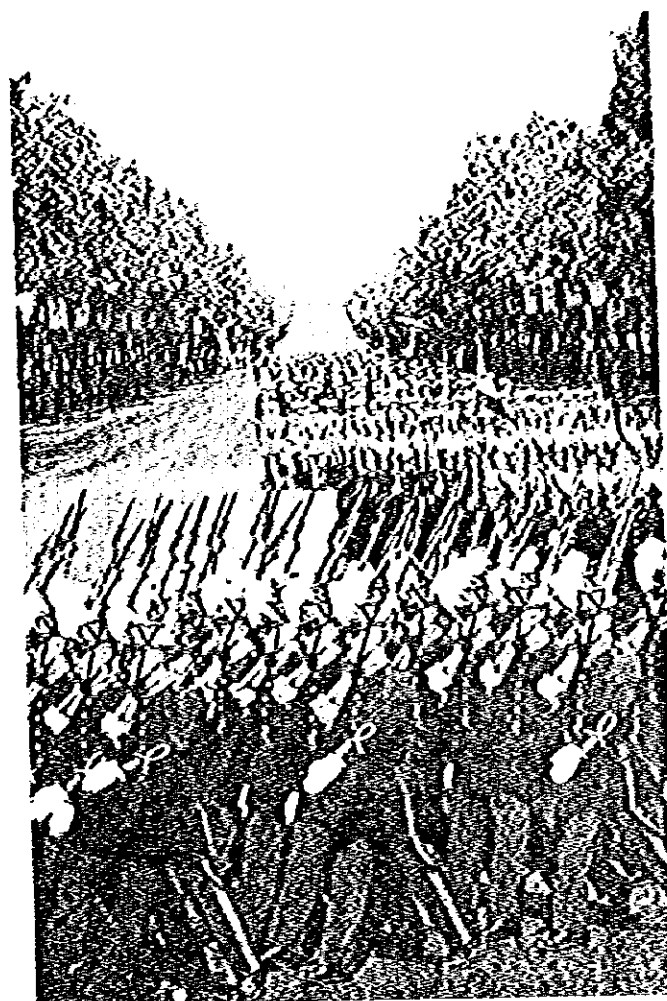
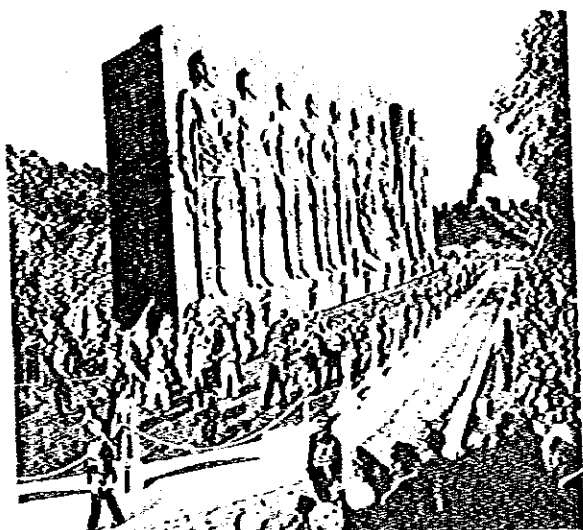
Each plaza is to have a close relation to the facilities in the park, is to be located in places suitable for such relations, and is to function as an entrance plaza for park facilities.

**alameda**



## Imaginable Collage of Paseo





# National Ceremonial Plaza

Not only is the National Ceremonial Plaza the physical and functional (including symbolic functions) center of the park but it also is to be a symbol of the unity of the people of Bogota and of Colombia. Here there will be presented and held events and ceremonies of both national and international importance, such as ceremonies celebrating the birth of Simon Bolivar; ceremonies in remembrance of his death; Independence Day celebrations; presidential inaugurations; opening ceremonies for meetings such as of Latin American national leaders; memorial parade reviews; World Cup sports meets; carnivals, exhibitions and other programs on national holidays, and so on. It is to be a place for all the people, rich and poor, young and old, men and women, boys and girls; a place where every citizen of Colombia should be at least once in his or her lifetime, and herein lies the significance of constructing this plaza, which will do so much to emphasize and express the symbolic nature of the park.

## Activity and Space

The first requirement in determining the spatial structure of the National Ceremonial Plaza so that it may accommodate all of these diverse events is the analysis of functional relationships between the activities and the space. In the actual performance or occurrence of activities and events in this plaza, although at times they would be combined, or have reversed roles, basically all those present may be considered to be in one of two categories which we may call "performers" and "spectators" here.

### ● Performers space for activities:

- Speechmaking, lectures etc.;  
1-30 persons; 2-3m<sup>2</sup>/person
- Ceremonies, mass games, dances etc.;  
50-200 persons; 10-30m<sup>2</sup>/person
- Parades, marches, etc.;  
max. width, 30-50 persons abreast;  
length, 500m to 2km or more; vehicles;  
floats and military equipment to be included

### ● Spectators space for activities:

- Fixed seating;  
0.4-0.5m<sup>2</sup>/person; graduated elevation
- Standing room;  
0.25-1.0m<sup>2</sup>/person
- Free room;  
2-5m<sup>2</sup>/persons; considered as part of the scenery at times of ceremonies

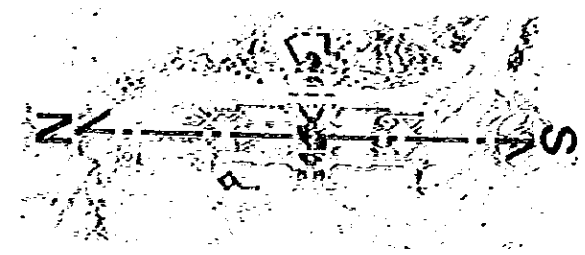
At present when large gatherings are held in Bogota, the facilities used are Plaza de Bolivar (1ha; 30,000 persons), Campin (50,000 persons) and others. In view of conditions related to actual use of these facilities thus far, and the distance over which events may be comfortably witnessed, as well as the nature of this plaza's being intended to be the largest ceremonial plaza in the nation, it is to be planned to normally accommodate 30,000-40,000 persons, and to be capable of use by a maximum of 50,000-60,000 persons. The following three levels of space are to be used for activities in the plaza (see table below).

## Spatial Structure

### ● Orientation

Orientation is to be with the north-south direction used as the axis, to minimize the influence of early morning or late afternoon sun.

Fig. - 32 Orientation of Ceremonial Plaza



### ● Multiple Activity Core

In addition to being able to accommodate a large throng at times of ceremonies, and also to insure that the space is easy to use, a balance of large area and human scale is needed. Different kinds of plazas are to be located on the north-south and east-west axis, and are to be capable of being used independently of one another.

Fig. - 33 Activity Core of Ceremonial Plaza

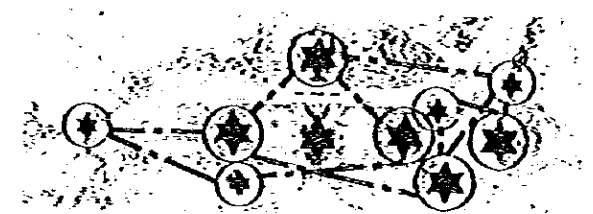


Table - 18 Performance Capacities of Ceremonial Plaza

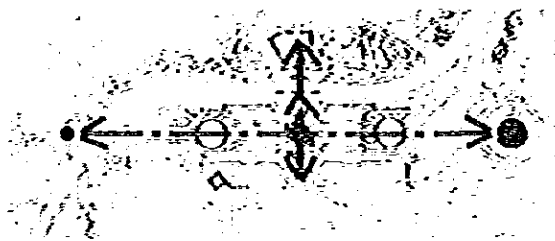
	User population	Performance Area	Spectators			Distance between performers & spectators
			Fixed seats	Standing	Other	
Level 1	1ha 5,000-10,000	100- 500m <sup>2</sup>	5,000	5,000	-	0.5- 50m
Level 2	3ha 10,000-30,000	1,000- 2,000m <sup>2</sup>	5,000	10,000	10,000-15,000	5 -150m
Level 3	5ha 50,000-70,000	10,000-20,000m <sup>2</sup>	10,000*	30,000	10,000-30,000	50 -500m

\* including temporary seating

### Axis and eye stop

The Historical Museum is to be located to the south side of a north-south axis parallel to Calle 63, as an eye stop. At the end of the axis will be seen the high-rise buildings of downtown Bogota, and the mountains, as the background. To the north side a monument in the Urban Mall will be positioned, also as an eyestop. An east-west activity axis will be positioned perpendicular to the first axis. Between it and the plaza will be a VIP dais, and stage.

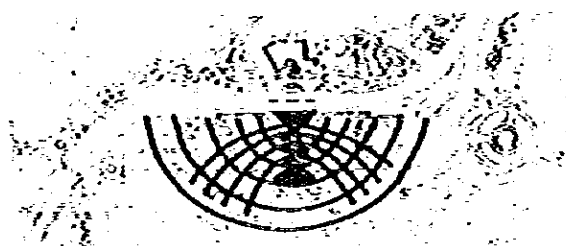
Fig. - 34 Axis of Ceremonial Plaza



### Stage and spectators seats

A stage is to be provided on both sides of the east-west axis; it is to be of such nature as to be usable for many kinds of ceremonies. Spectator seating will be built on a stepped terrace in and adjacent to the plaza. In order to permit as many spectators as possible to have a clear view when very many gather for a ceremony or other special event, the formation of banks in the lawn area will be useful as a flexible approach in park management and will permit them to be used for siting.

Fig. - 35 Stage and Seat Layout for Event



### Visual Analysis

Analysis has been performed with regard to visual aspects of factors determining the scale and form of the plaza, as follows:

### Horizontal visual analysis

The following modules are used regarding the relationship between horizontal visual distance and spatial perception (relationship of distance and human awareness).

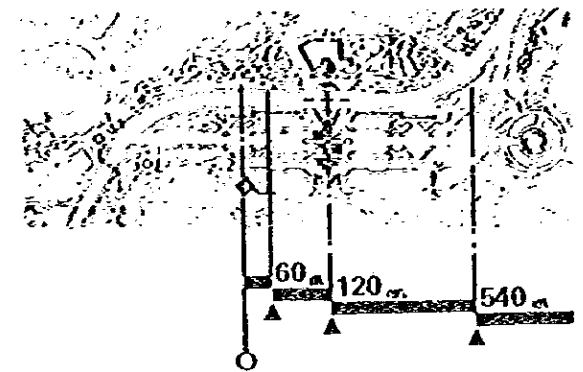
6-20m	Facial expressions are understandable; communication is possible (Contact)
20-60m	Can recognize face of friend or familiar person (Near)
60-180m	Can distinguish sex, age, mannerisms (Selective)
180-540m	Can recognize objects as human being (Equal)
540-1,600m	Can tell if something is moving or still (Remote)

- The limit to what can be felt to be one space, outdoors, is that within 450-500m. It will be possible to control perception say of a parade, so that when a parade is being viewed from one end of the plaza, it will first be perceived as a mass at the far end of the plaza, and as it approaches more details will become perceivable, in a dramatic manner.

### Vertical visual analysis

Differing from an urban plaza which is surrounded by buildings in the middle of a city, in the case of this plaza it is necessary to harmonize it with the park environment, and also to assure the safety and ease of movement of the people using the plaza, so that to an extent it must be "open". But when a plaza is on a perfectly level site, it is by no means easy to organize and define it. Therefore, the ground is to be graded so as to have some variation in level, and by this and careful use of planting, a gentle enclosure will be effected, to facilitate perception of the plaza as one coherent space. A gentle slope of 1.25% will be formed at 120-130m from the center of the plaza in the direction of the long axis, which is believed to be an appropriate distance, to limit vision and assist in creating a sense of enclosure. In the direction of the short axis, use of street trees will similarly provide enclosure, and a minimum gradient of 14° is to be provided.

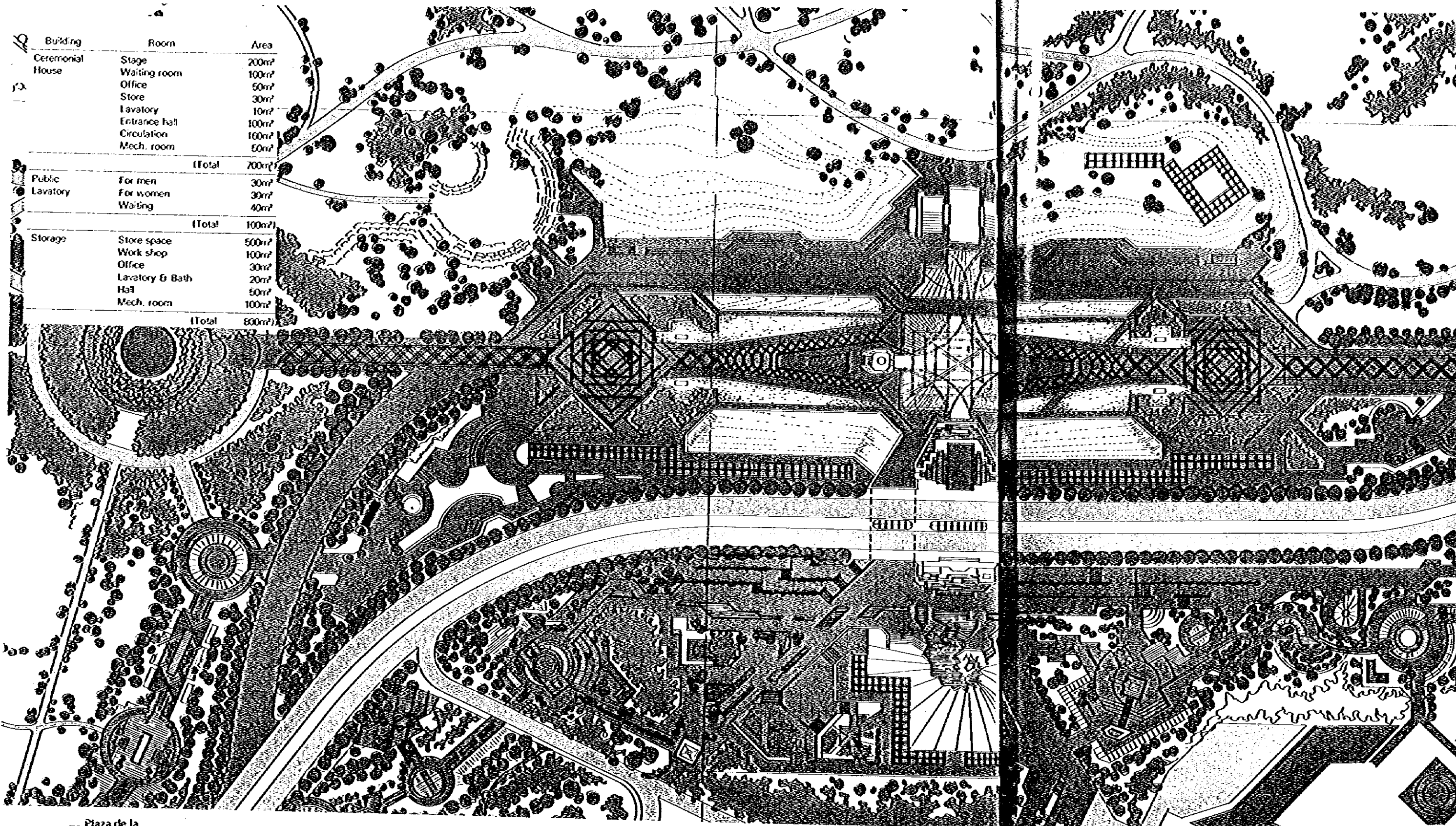
Fig. - 36 Visual Stanza of Ceremonial Plaza



### Supporting Facilities and Installations

The following are facilities and installations required for the various ceremonies and other special events. It will be necessary to attain an optimum balance of effective services and investment in deciding on the basis of frequency of ceremonies and special events as well as the peak demand made by those performing or watching of the type of both temporary and permanent facilities installations.

Function	Required Flexible Installations	Fixed Installations
Service	Movable seat Temporary toilet Kiosk First aid	Public toilets Storage Restaurant
Decoration	Bunting, Flags, Stage	Flag pole Multiple use structure
Lighting	Illumination Laser beam units	High pole light
Broadcasting and Audio-visual	Temporary speaker system, Wide screen	Broadcasting system
Control	Rope, Guide post	Sign board
Utility	Temporary power supply (Generator)	Flexible type of utility network



Building	Room	Area
Ceremonial House	Stage	200m <sup>2</sup>
	Waiting room	100m <sup>2</sup>
	Office	50m <sup>2</sup>
	Store	30m <sup>2</sup>
	Lavatory	10m <sup>2</sup>
	Entrance hall	100m <sup>2</sup>
	Circulation	100m <sup>2</sup>
	Mech. room	50m <sup>2</sup>
(Total)		700m <sup>2</sup>
Public Lavatory	For men	30m <sup>2</sup>
	For women	30m <sup>2</sup>
	Waiting	40m <sup>2</sup>
(Total)		100m <sup>2</sup>
Storage	Store space	500m <sup>2</sup>
	Work shop	100m <sup>2</sup>
	Office	30m <sup>2</sup>
	Lavatory & Bath	20m <sup>2</sup>
	Hall	50m <sup>2</sup>
	Mech. room	100m <sup>2</sup>
(Total)		800m <sup>2</sup>

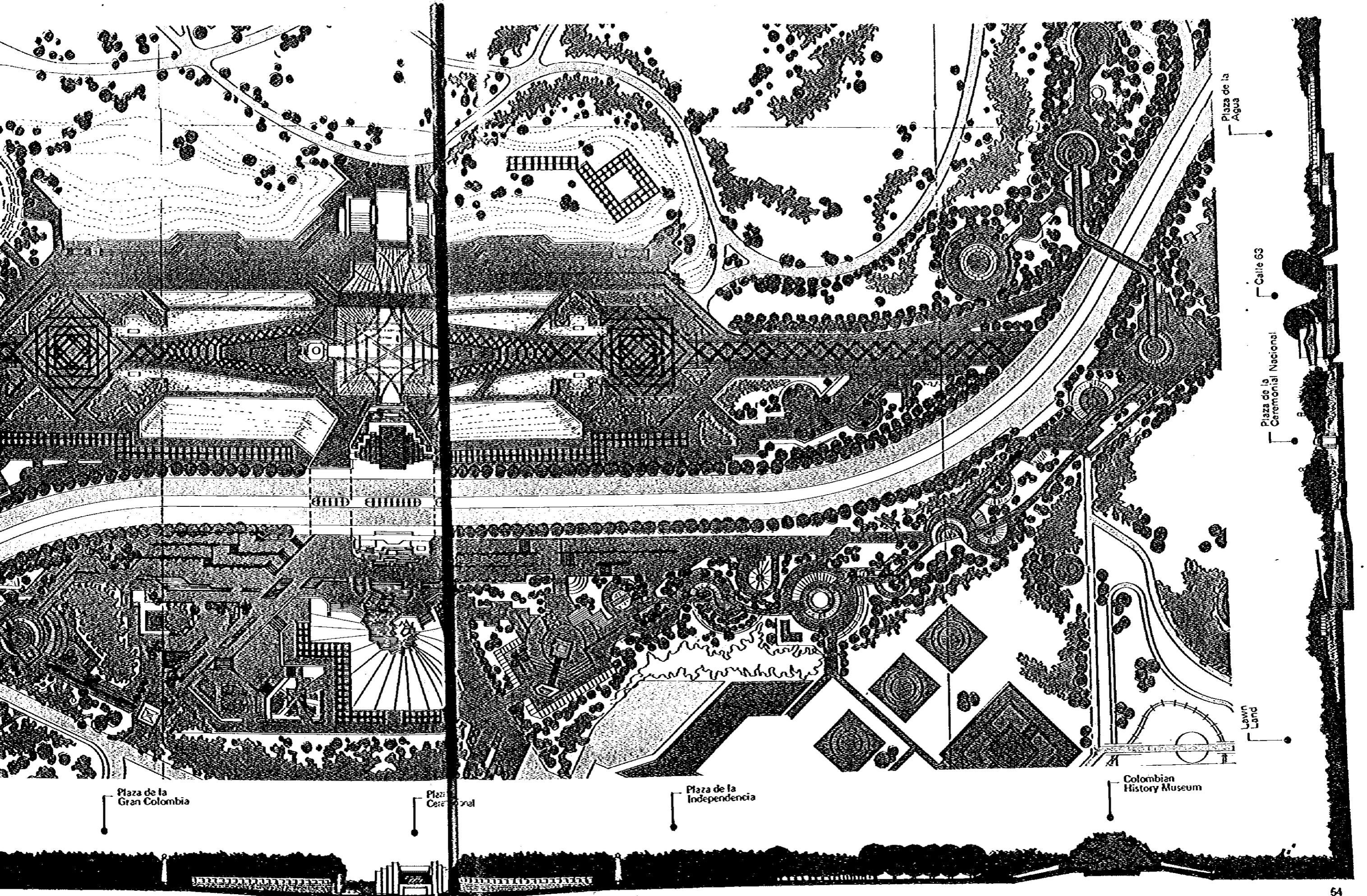
Plaza de la Tecnología

Calle 63

Plaza de la Gran Colombia

Plaza Ceremonial

Plaza de la Independencia



Plaza de la Gran Colombia

Plaza Cerebral

Plaza de la Independencia

Colombian History Museum

Low Land

Calle 63

Plaza de la Ceremonial Nacional

Plaza de la Agua

