

8540

8540

8530

8530

15°20'

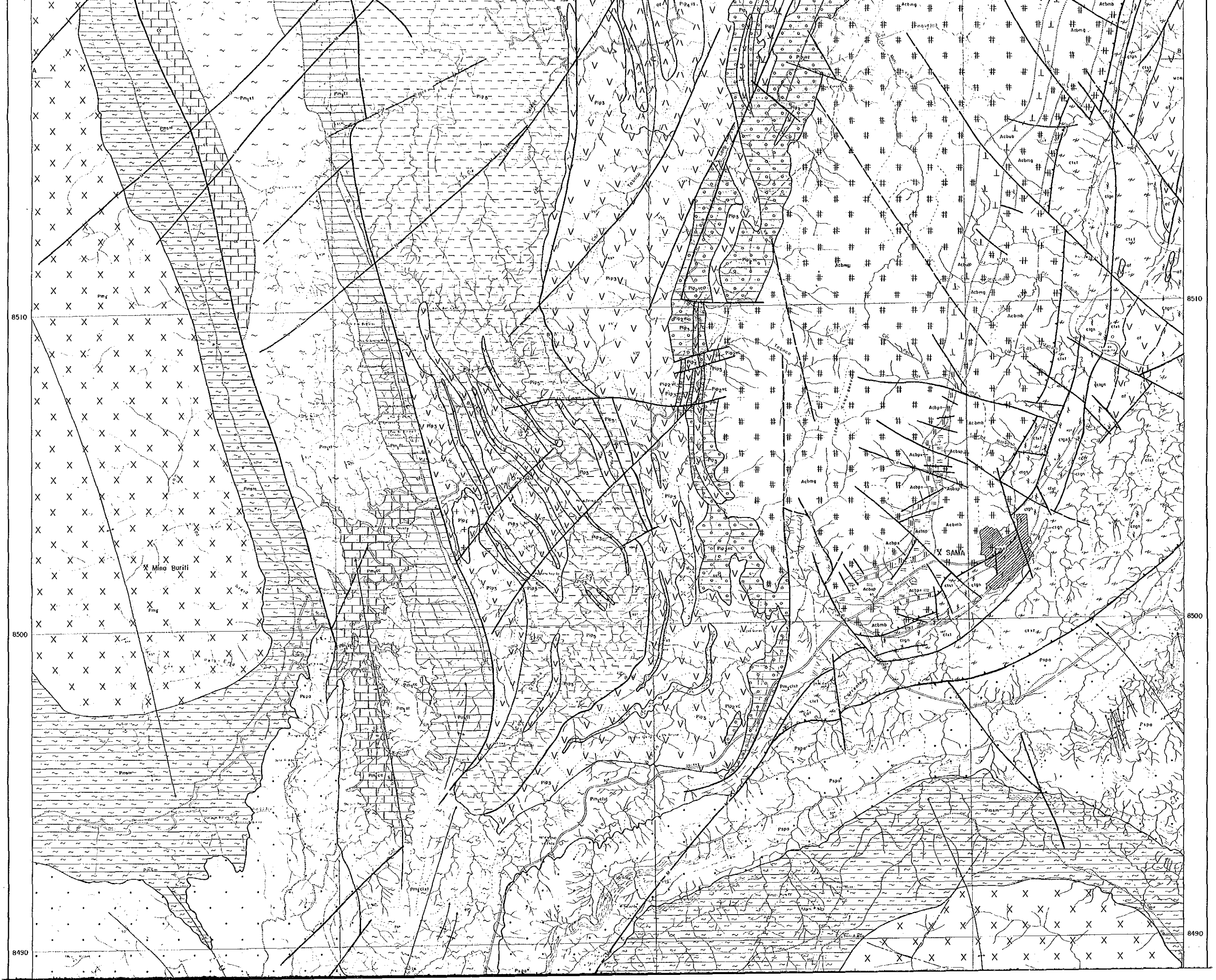
15°20'

8520

8520

A





8510

8510

8500

8500

8490

8490

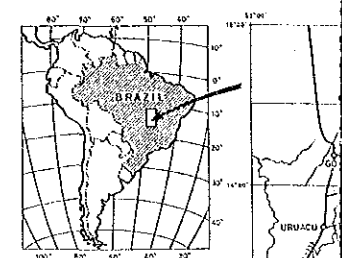
Mino Burili

SAMA

Pip

GEOLOGICAL SURVEY
IN
PALMEIROPOLIS, B
PHASE I

Geological Profile of the
Survey Area



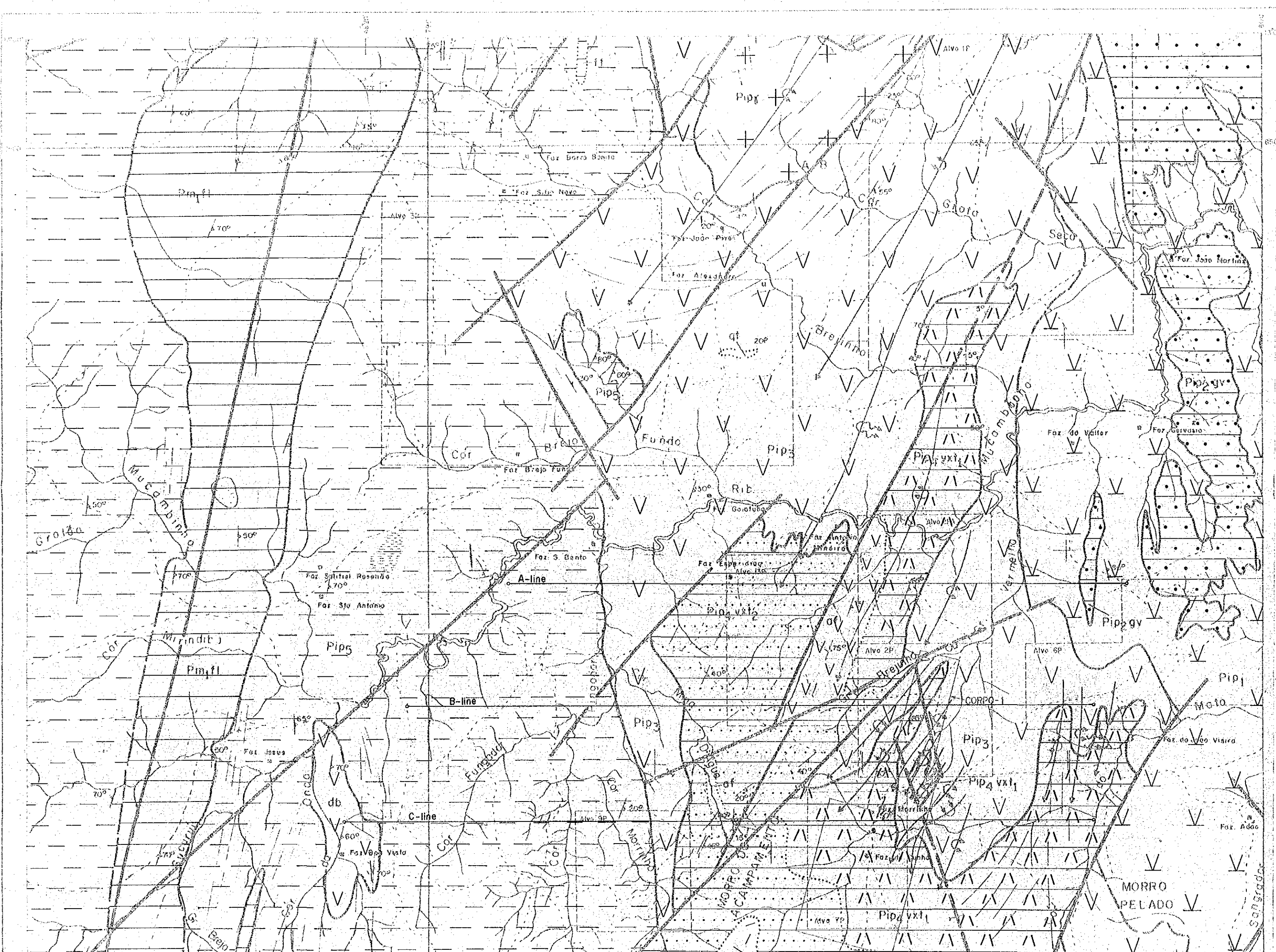
JAPAN INTERNATIONAL COOPERATION
METAL MINING AGENCY
DEC. 1986

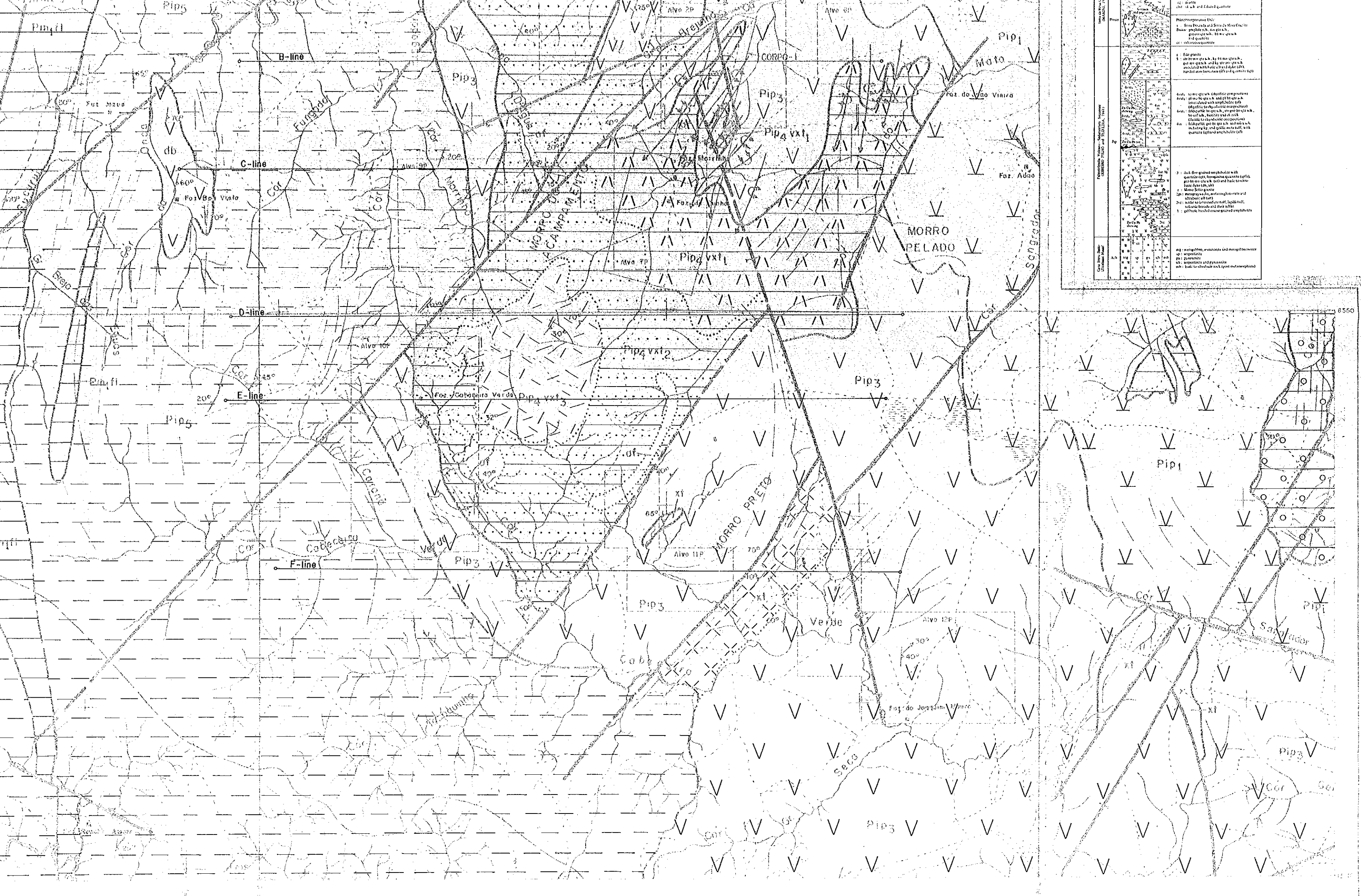
Scale 1:20,000



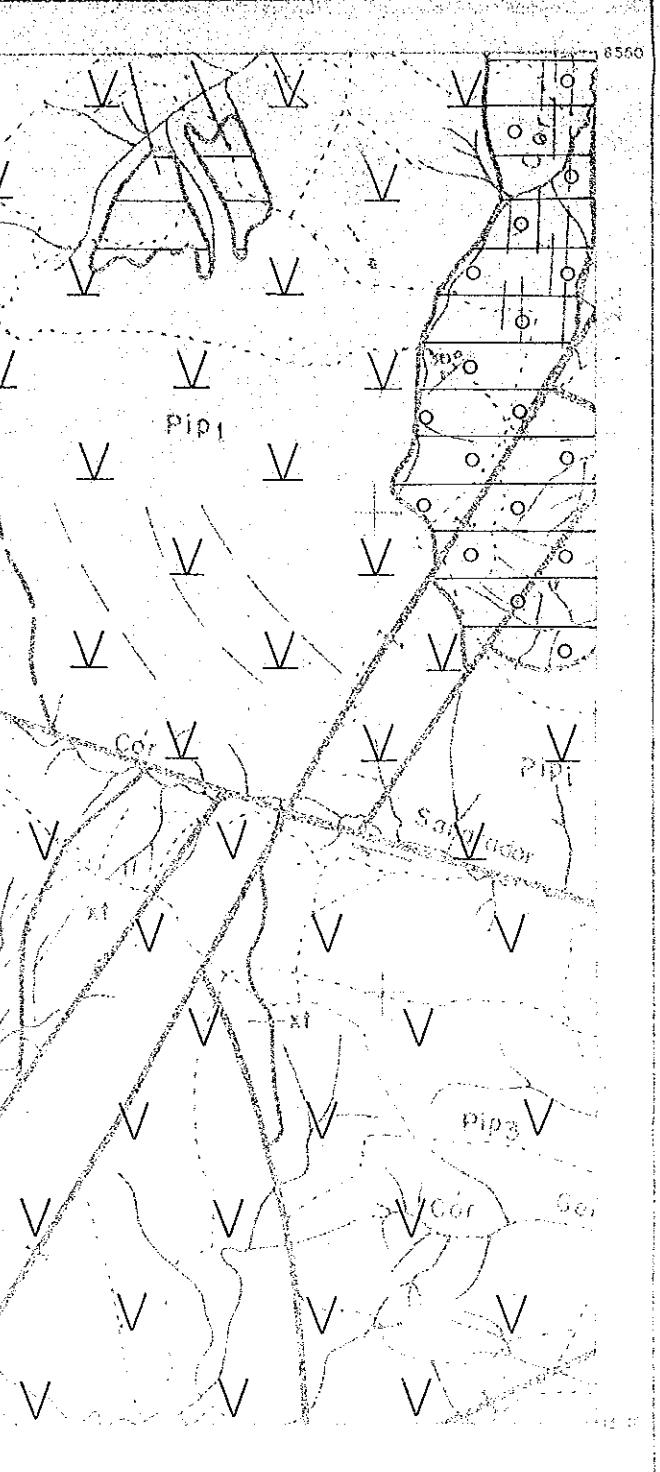
LEGEND

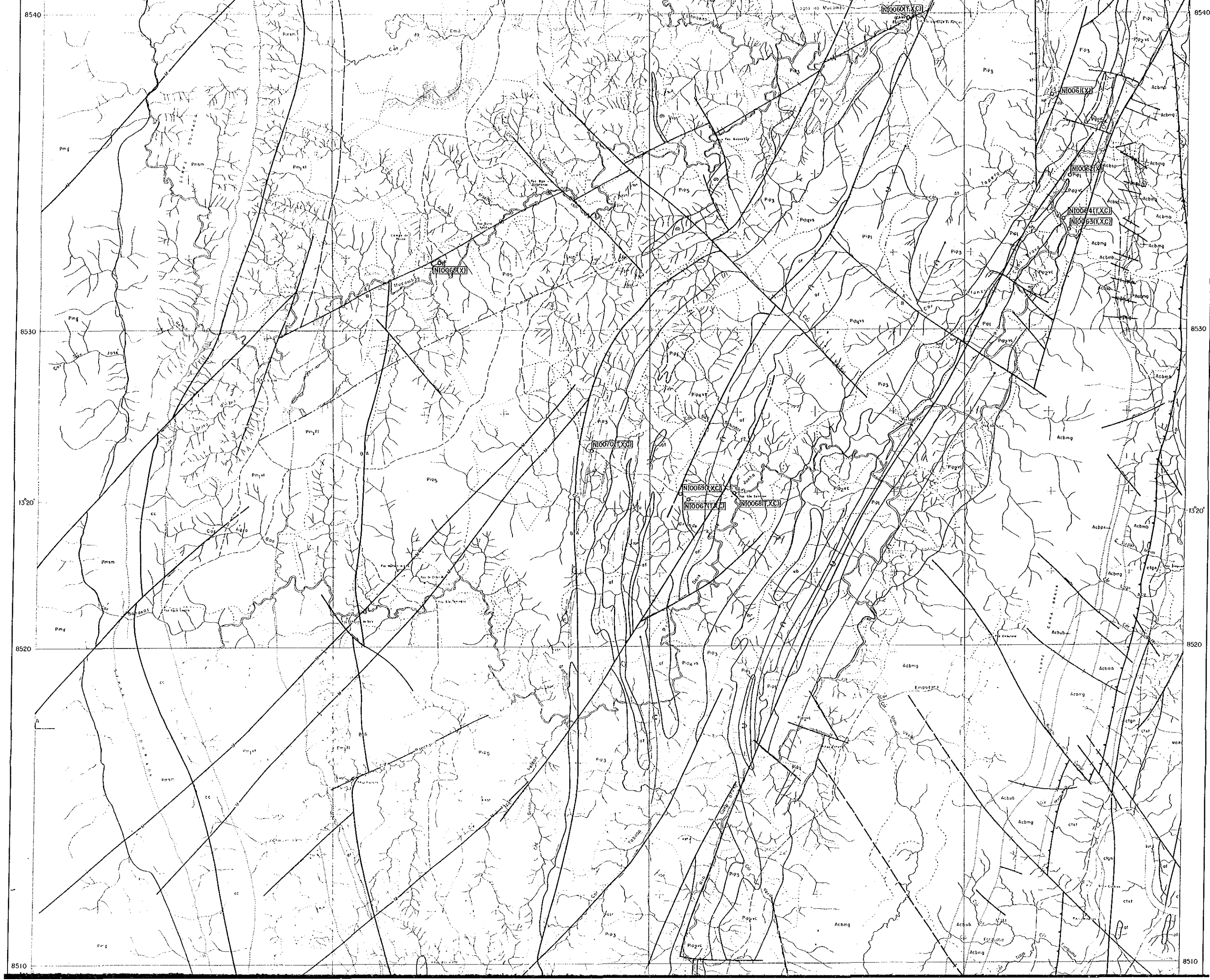
Unit	Color	Symbol	Description
Phanerozoic	White	Stippled	Phanerozoic (C): quartzite, calcareous and graphitic phyllites, etc. (see also notes on p. 4-5)
Rio Paraíba Formation Zone	P1	Stippled with small dots	P1: gray to white quartzite
	P2	Stippled with larger dots	P2: gray to white quartzite with small black spots (see note on p. 4-5)
	P3	Stippled with diagonal lines	P3: gray to white quartzite with small black spots (see note on p. 4-5)
Archaean Group (1970)	Ar1	Stippled with horizontal lines	Ar1: gray to white quartzite with small black spots (see note on p. 4-5)
	Ar2	Stippled with vertical lines	Ar2: gray to white quartzite with small black spots (see note on p. 4-5)
Phanerozoic (see also notes on p. 4-5)	Ph1	Stippled with horizontal lines	Ph1: dark fine grained amphibolite with quartzite facies (see note on p. 4-5)
	Ph2	Stippled with vertical lines	Ph2: dark fine grained amphibolite with quartzite facies (see note on p. 4-5)
Cambrian	C1	Stippled with horizontal lines	C1: dark fine grained amphibolite with quartzite facies (see note on p. 4-5)
	C2	Stippled with vertical lines	C2: dark fine grained amphibolite with quartzite facies (see note on p. 4-5)
Precambrian	P1	Stippled with horizontal lines	P1: dark fine grained amphibolite with quartzite facies (see note on p. 4-5)
	P2	Stippled with vertical lines	P2: dark fine grained amphibolite with quartzite facies (see note on p. 4-5)





	Pip1
	Pip3
	Pip4 vxt1
	Pip4 vxt2
	Pip4 vxt3
	MORRO PELADO
	MORRO PRETO
	Faj. do Vao Verde
	Faj. do Joazeiro
	Faj. do Vao Viado
	Alvo 2p
	Alvo 3p
	Alvo 11p
	Alvo 12p
	Verde
	Cab
	Cor



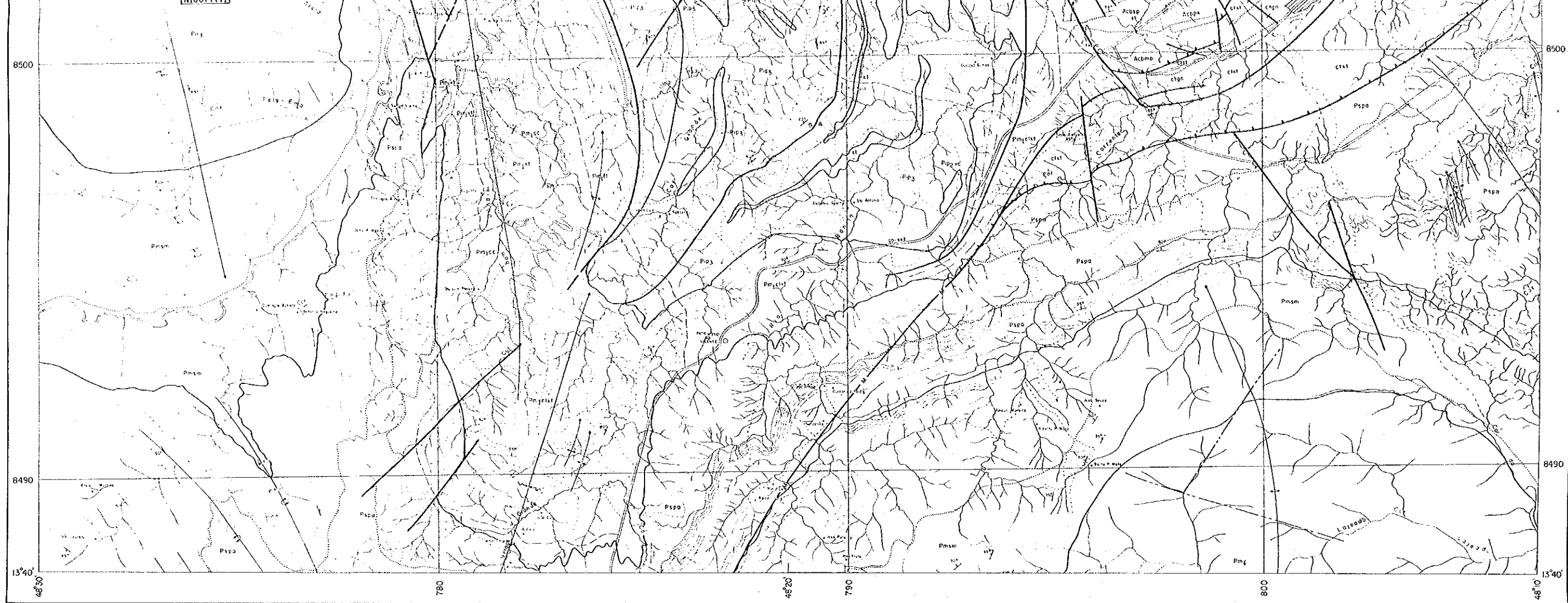


8520

8510

8500





LEGEND.

○ NI0001 (T,X,C,P,O) : Sampling point and sample number

- T : Thin section
- X : X-ray diffractive analysis
- C : Chemical analysis of rock
- P : Polished section
- O : Ore analysis

PI II-5
 国際協力機構
 16207
 国際協力機構

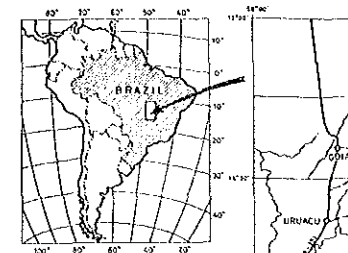
GEOLOGICAL SURVEY
 IN
 PALMEIROPOLIS, BRAZIL
 PHASE I

Location Map of the Samples Tested
 in the Surveyed Area

JAPAN INTERNATIONAL COOPERATION AGENCY
 METAL MINING AGENCY OF JAPAN
 DEC. 1986

Scale 1:50,000

Location Map of the Sam
in the Semi-detailed Surv



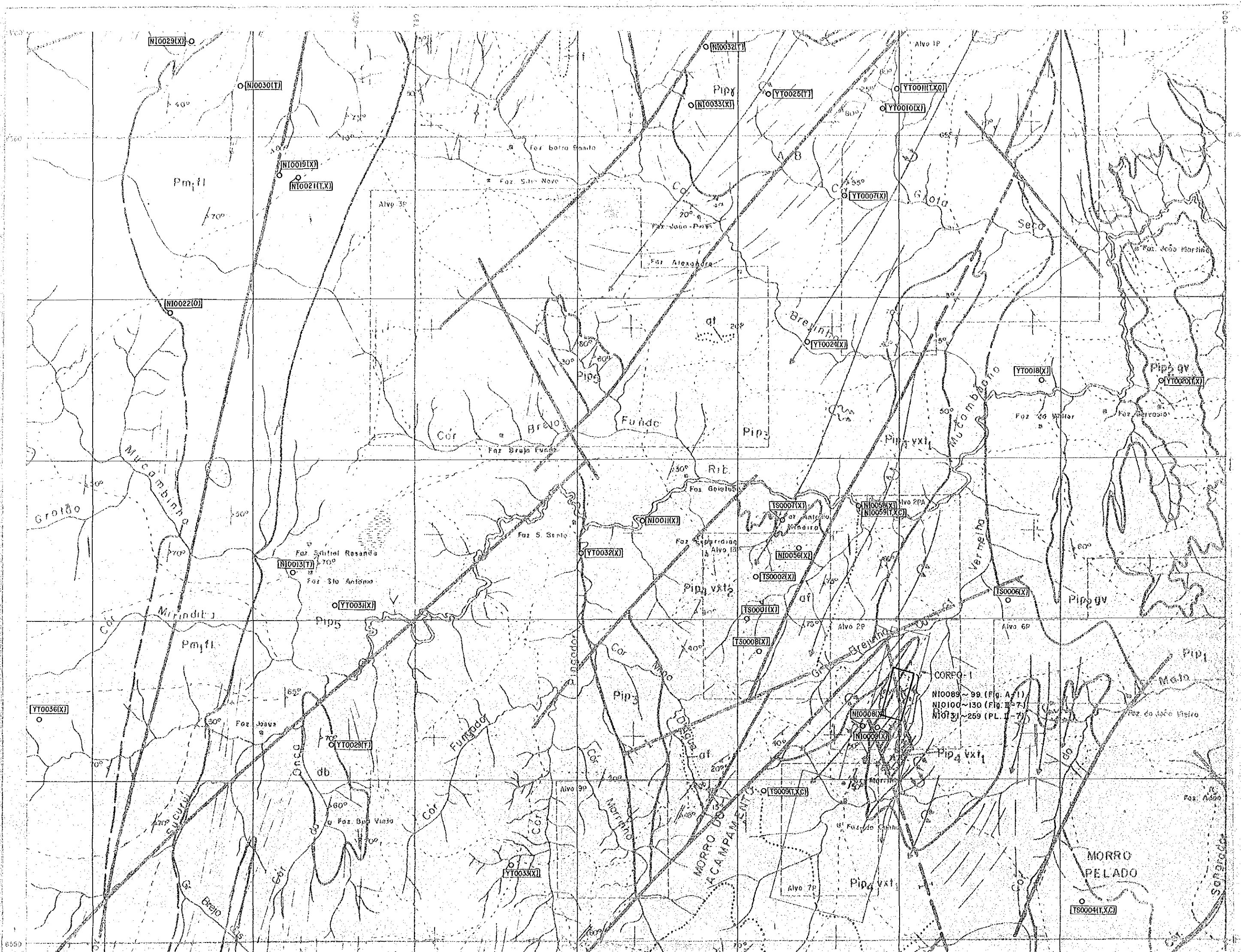
JAPAN INTERNATIONAL COOPERA
METAL MINING AGENCY OF
DEC. 1985

Scale 1:20,000



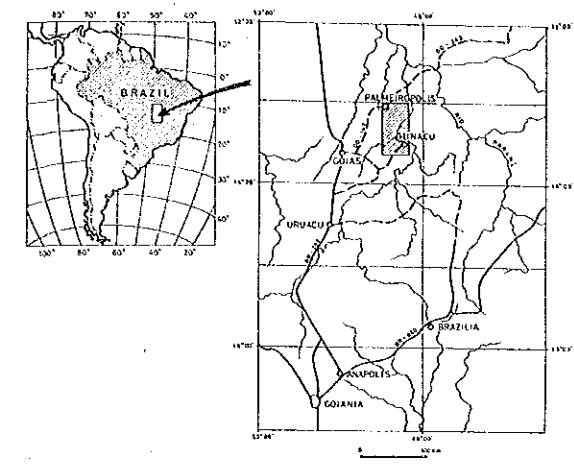
LEGEND

- N10001 (T,X,C,P,O) : Sampling sample
- T : Thin section
- X : X-ray fluorescence
- C : Chemical analysis
- P : Polished section
- O : Ore analysis



CORPO-1
N10089 ~ 99 (Fig. A-1)
N10100 ~ 130 (Fig. B-7)
N10131 ~ 259 (PL. I-7)

Location Map of the Samples Tested
in the Semi-detailed Survey Area



JAPAN INTERNATIONAL COOPERATION AGENCY
METAL MINING AGENCY OF JAPAN
DEC. 1985

Scale 1:20,000



LEGEND

- N10001 (T,X,C,P,O) : Sampling point and sample number
- T : Thin section
- X : X-ray diffractive analysis
- C : Chemical analysis of rock
- P : Polished section
- O : Ore analysis

