

付 属 資 料

付 属 資 料

1. マンサニージョ港の土質分布

マンサニージョ港の内港部（サンペドリト及びタペイクストレスラグーン）の土質分布に関して以下に詳述する。

本調査において内港部に関して収集した土質調査結果は、図付-1、表Ⅲ-7に示す総数138点（内5点は全く位置不明、又7点はゾーン分類は可能であるが位置不明）分である。以上の調査結果をもとに、土質分布状況を検討する目的で①～⑭断面の図を作成し、図付-2～付-13に示す。

1-1 縦断方向土質分布

内港部の南北を縦断方向として、図付-2～付-5にサンペドリトラグーン、図付-11にタペイクストレスラグーンの縦断方向の土質分布図を示す。

サンペドリトラグーンの縦断方向の内、①断面（図付-2）の土質分布は1983年に実施された土質調査結果から作成している。この断面の最大水深M-16地点の-14mで、南北方向に浅くなる傾向を示している。なお、この①断面は、現在岸壁が建設中の区域とその延長線上に位置している為、浚渫などにより、水深が他の区域より深くなっていると推定される。

又、表層の軟弱有機質土、又は粘土層も、M-16付近で最も深い位置（-17m付近）まで堆積しており、水深と同様に南北方向に浅くなる傾向を示している。

一方、固い砂質土層はM-16からM-31までは、深度が-11m～-15m程度まで現われ、比較的宛定した厚さを持つが、ゾーンB北部のM34～M40では、この砂質土層が薄く、その下に比較的強度の小さい粘土層がある。

逆に、南部のM4からM7までは、軟弱土層の下に固い礫混りの砂質シルト、砂質粘土、又は砂質土層が現われる。

一方、②～④断面の土質分布は、1972年に実施された土質試験結果より作成している。図付-3～付-5でも明らかな様に土質分布は、表層より-10m前後まで軟弱な有機質土、又は粘土層、その下に砂質土層、互層（砂質土、シルト質土及び粘性土）が続いている。

ここで特徴的なことは、構造物の支持層を考える場合に最も重要な砂質土層の厚さが12m（S-7.8.9.）から1.6m（S-45）まで変化していることである。即ち、砂質土の厚さは、ラグーン北東方向に減少する傾向を示している。又、この砂質土層は、S-5.7.8.9.4.5.4.6.を除いては、実施したボーリング深度が-20mと浅く、層の途中で終了している為、層厚変化が判明していない区域が多い。

他方、タペイクストレスラグーンも図付-11の⑭断面に示すように、サンペドリトラグーンとほぼ同様の土質分布状況を示し、-10m前後まで軟弱な有機質土、又粘土が堆積している。

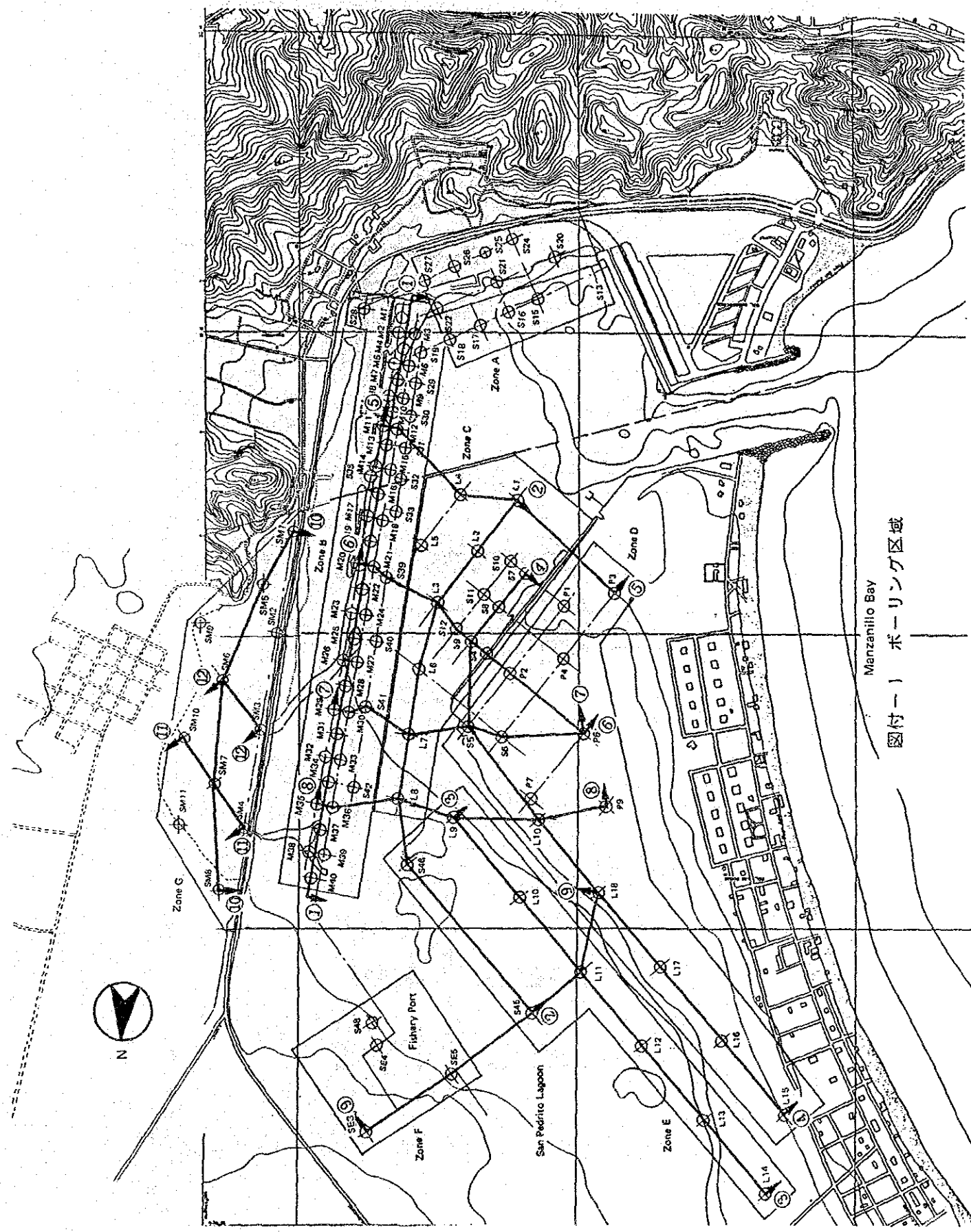
尚、ここも土質調査の深度が-12m～-17mまでと浅く、構造物の基礎を検討できる深度までは実施されていない。

1-2 横断方向土質分布

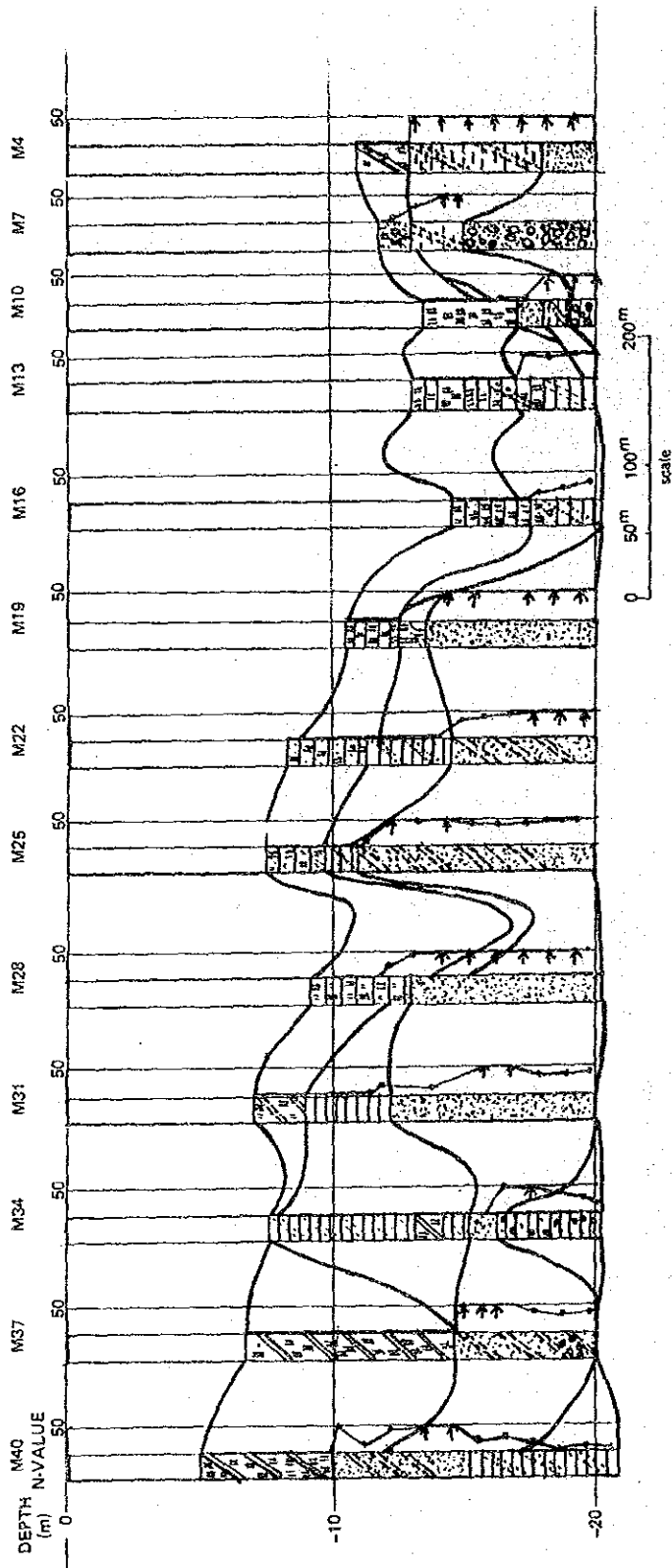
東西を横断方向として、図付-6～付-10にサンペドリトラグーン、図付-12、付-13にタペイクストレスラグーンの横断方向の土質分布を示す。

サンペドリトラグーンでは、図付-6～付-9で示すように、表層の軟弱な有機質土、又は粘土層の堆積深さが、東部(本文図Ⅲ-31の①断面に沿って)が大きい。又、ラグーン北東部(ゾーンDの南)では固い砂質土層の下に比較的ゆるい砂質土層や互層のある区域がある。又、この区域では、砂質土層が薄く、支持層として問題のある部分もある。

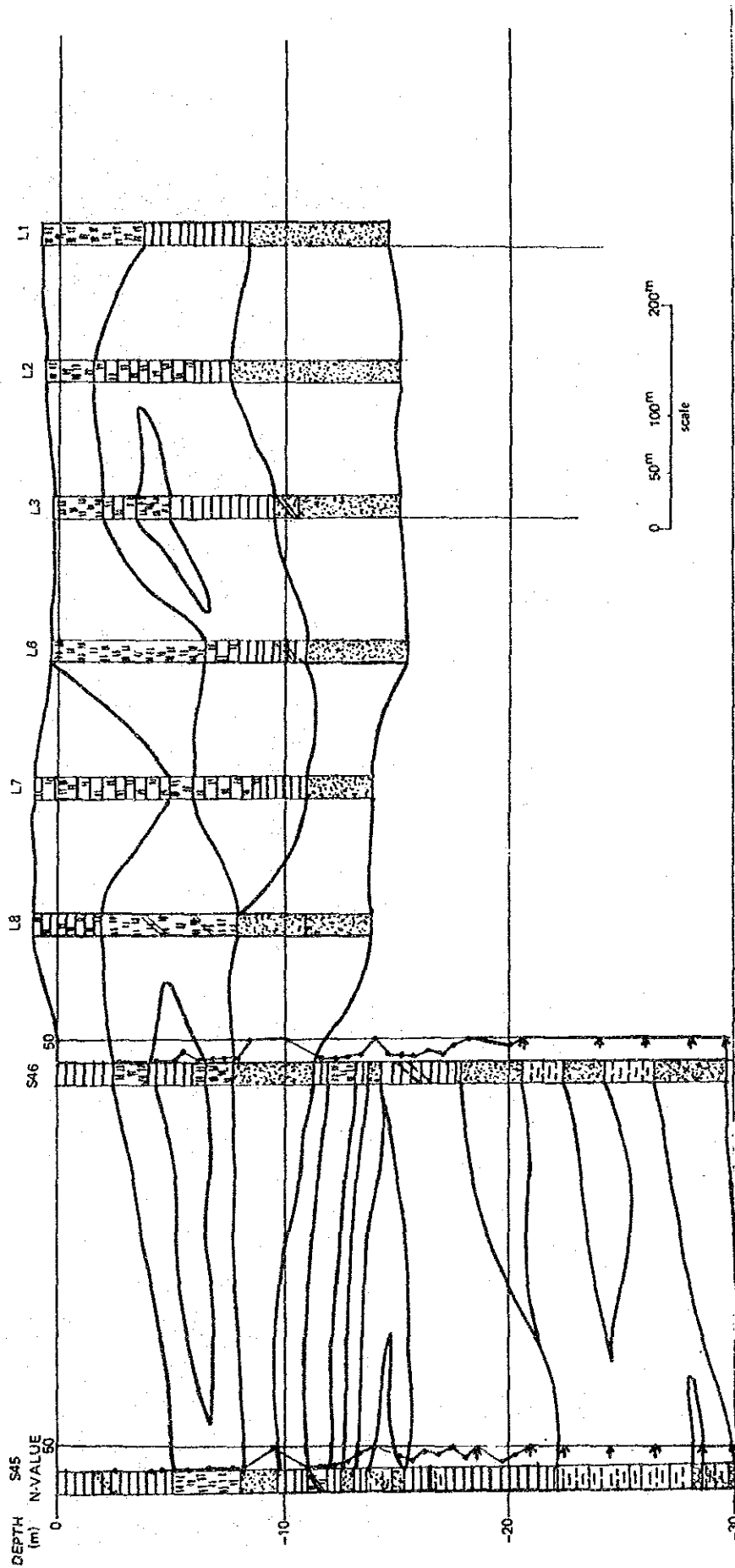
一方、タペイクストレスラグーンは、図付-12、付-13に示すように、横断方向に比較的均一な分布状況を示している。但し、縦断方向の傾向と同様に土質調査の深度が不足している。



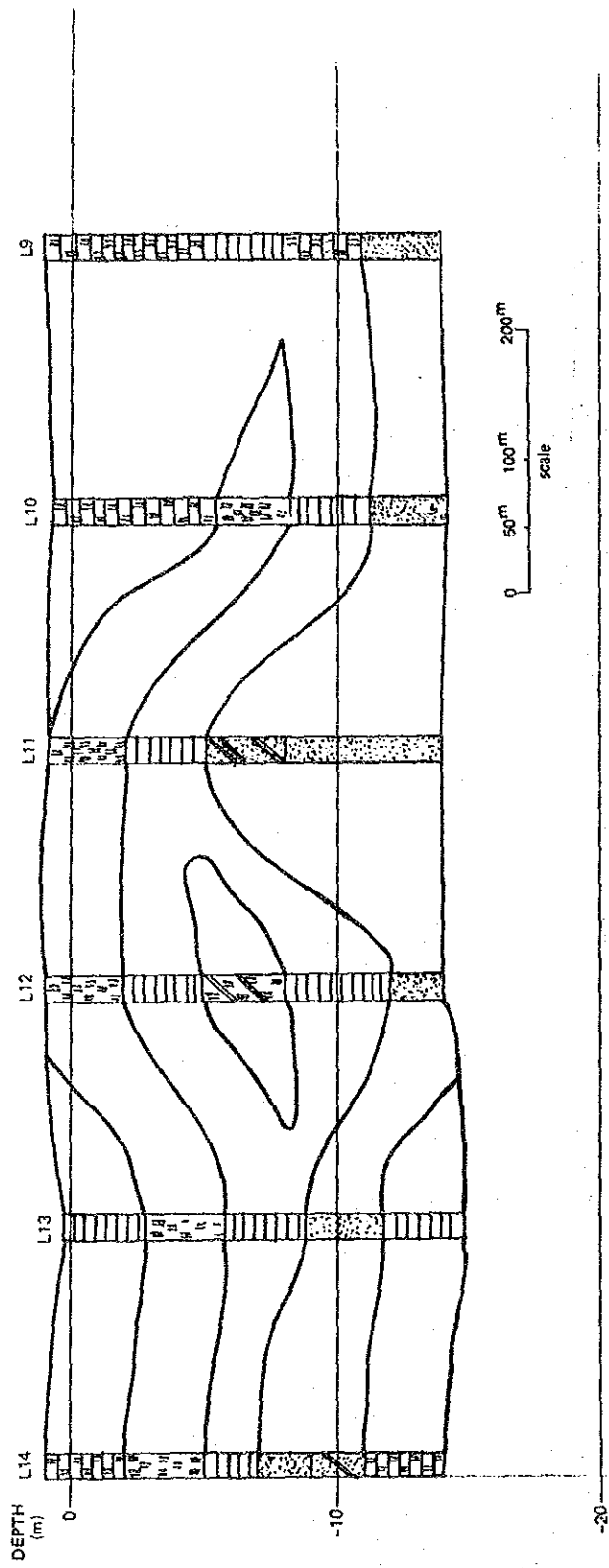
Manzanillo Bay
 図付一) ボーリング区域



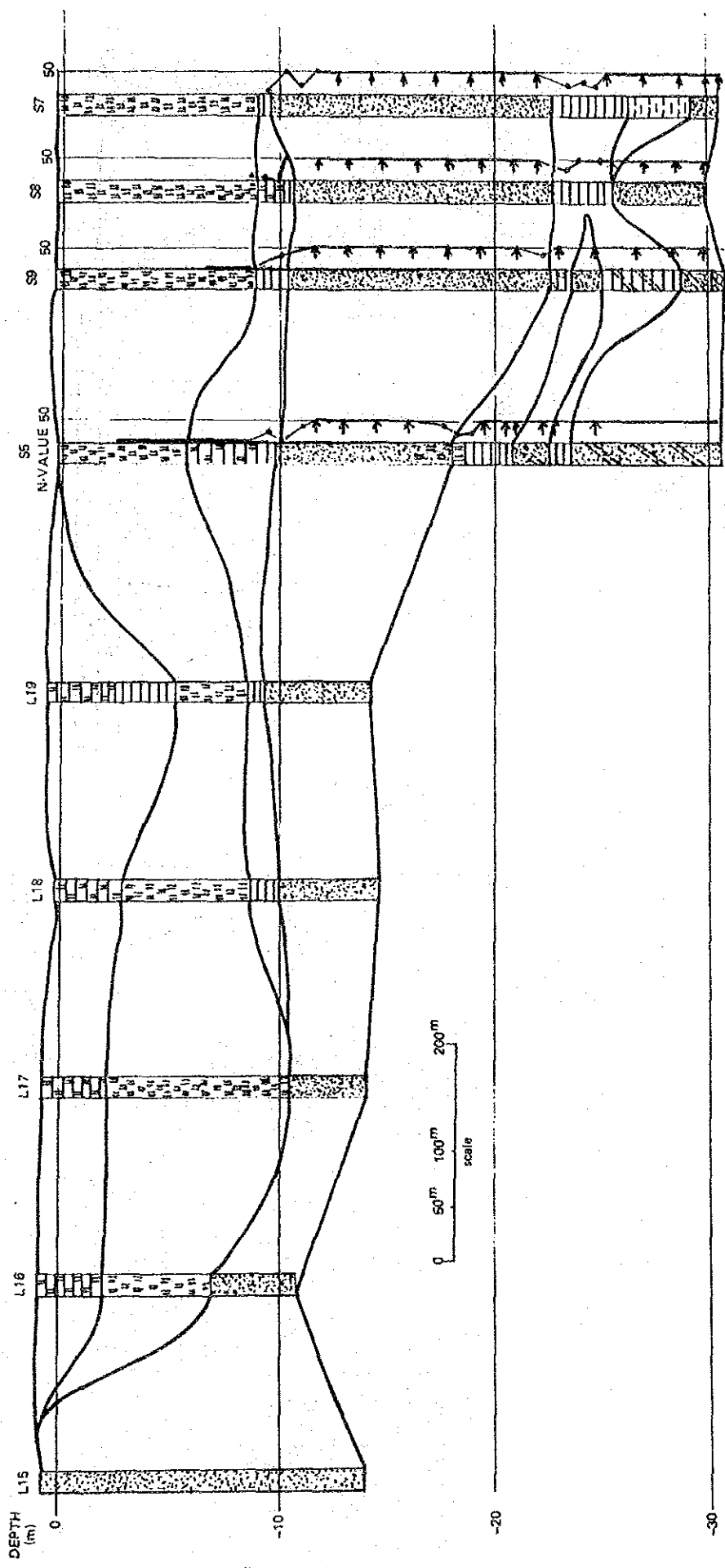
図付一2 土質分布(断面①-①)



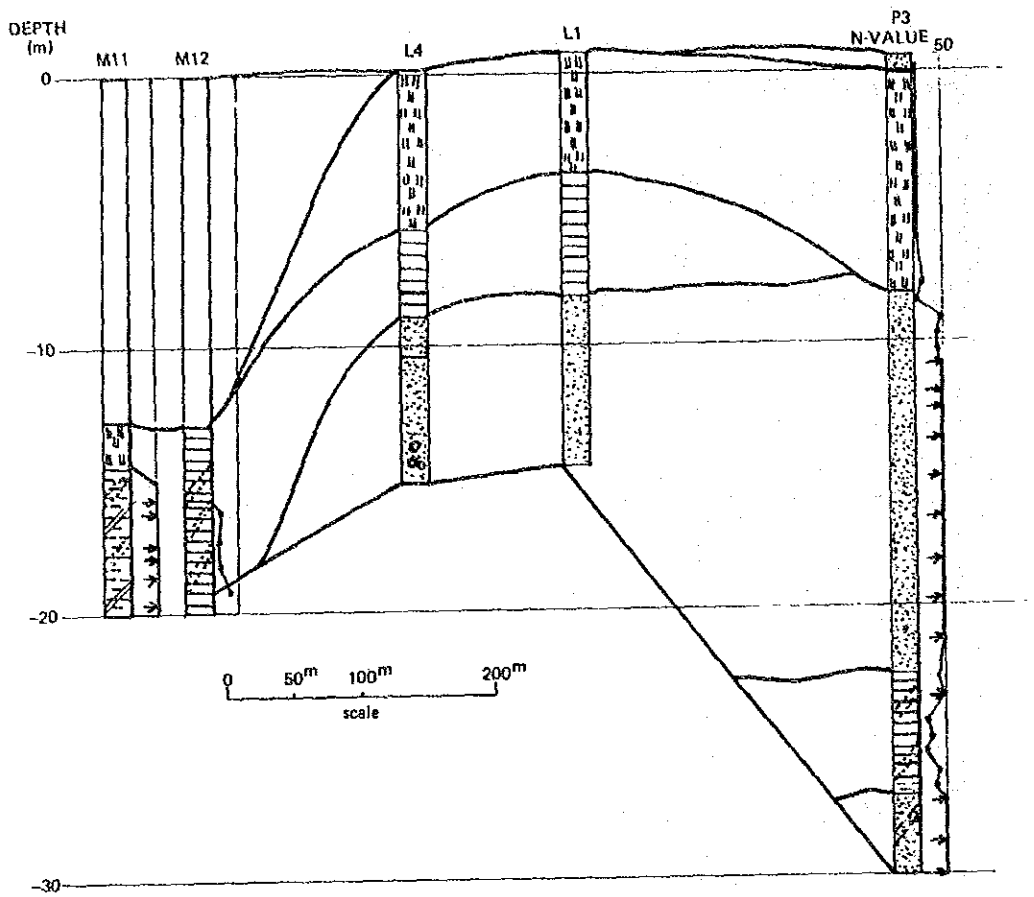
图付-3 土質分布(断面②-②)



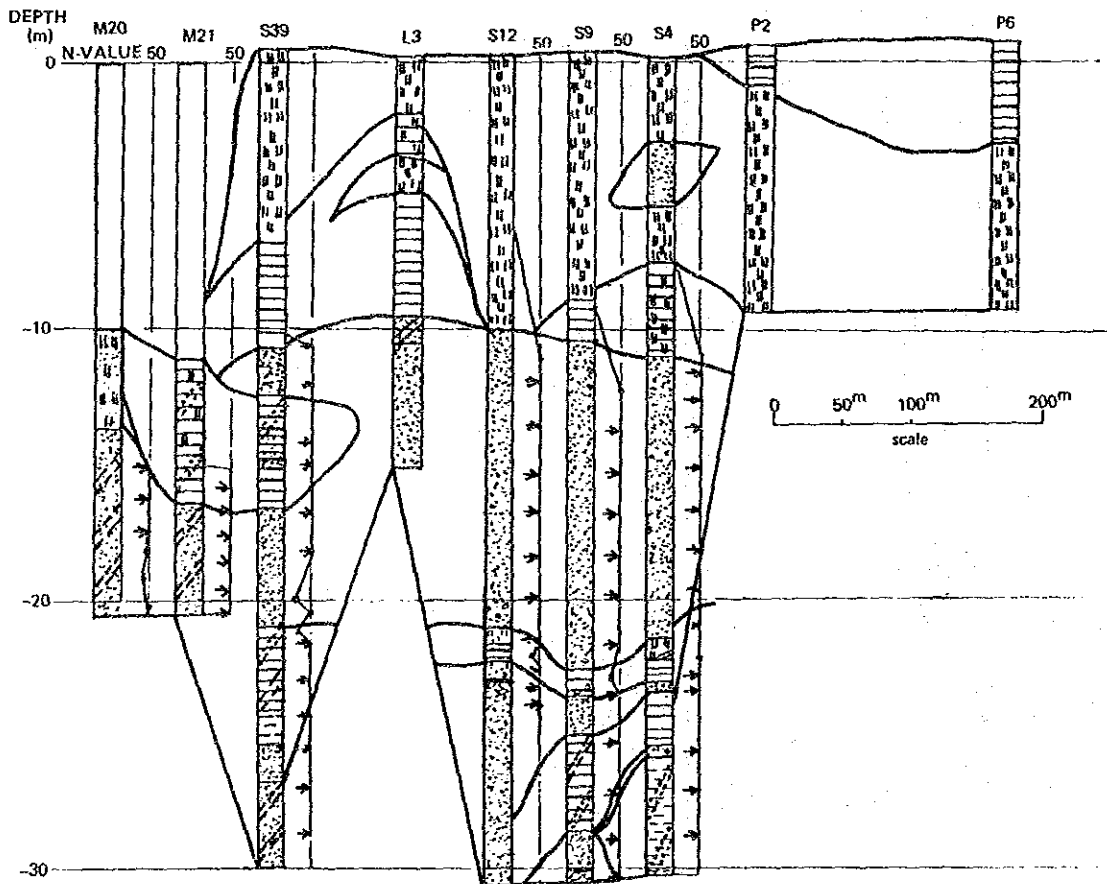
图付一4 土質分布(断面③-③)



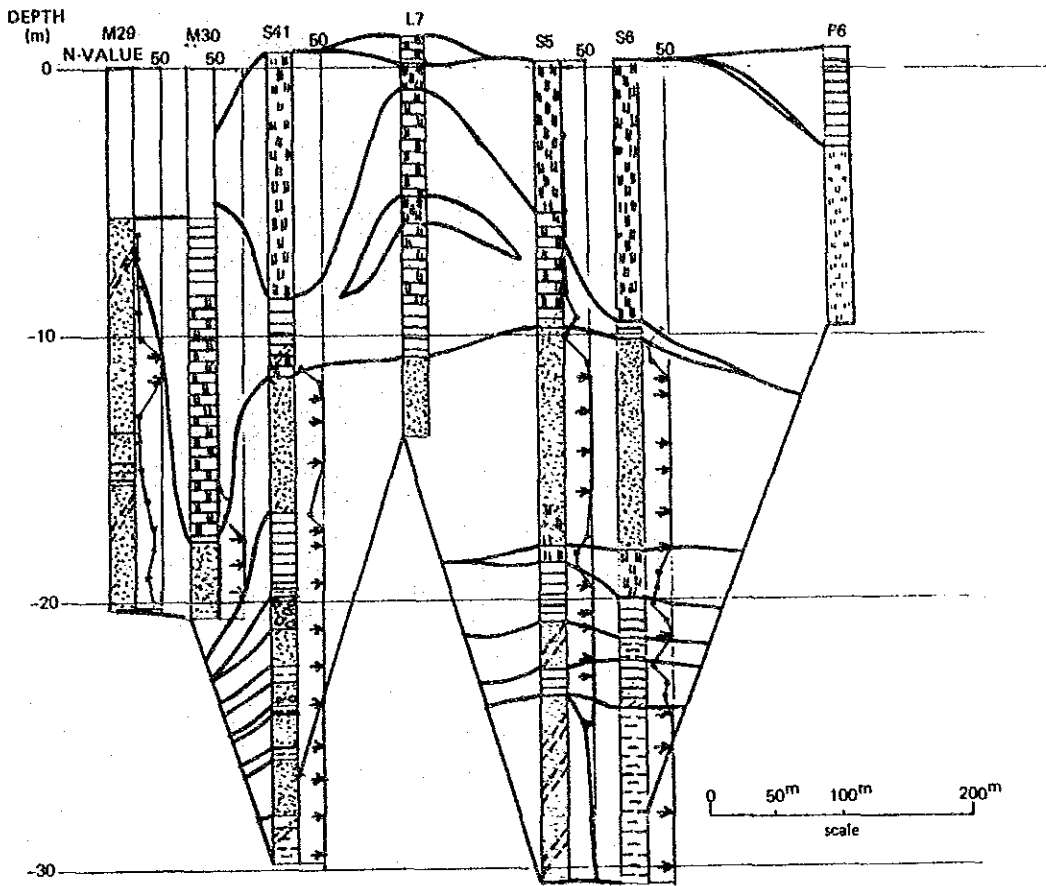
図付一5 土質分布(断面④-④)



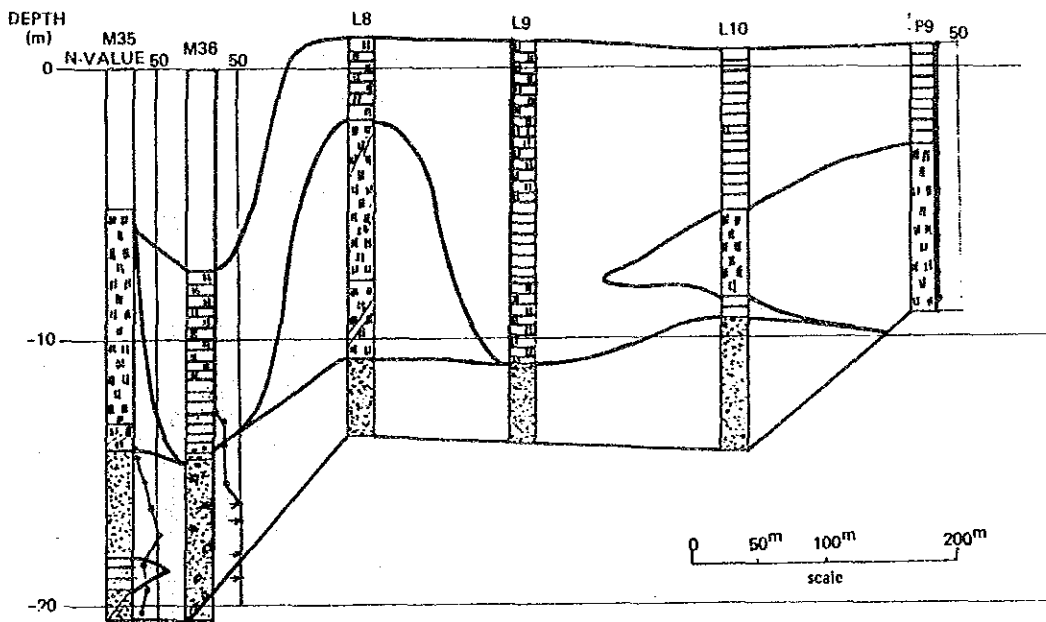
図付-6 土質分布(断面⑤-⑤)



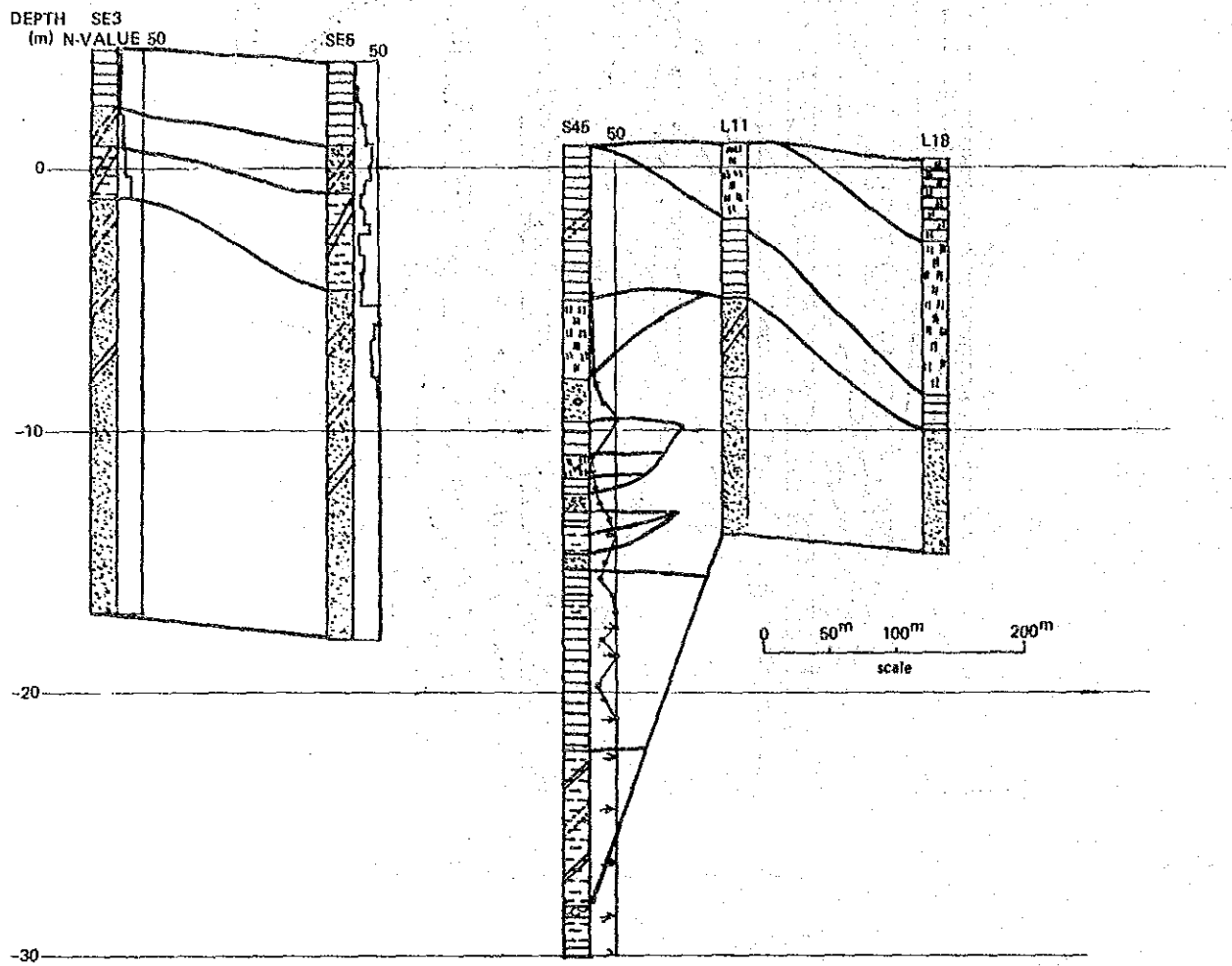
図付-7 土質分布(断面⑥-⑥)



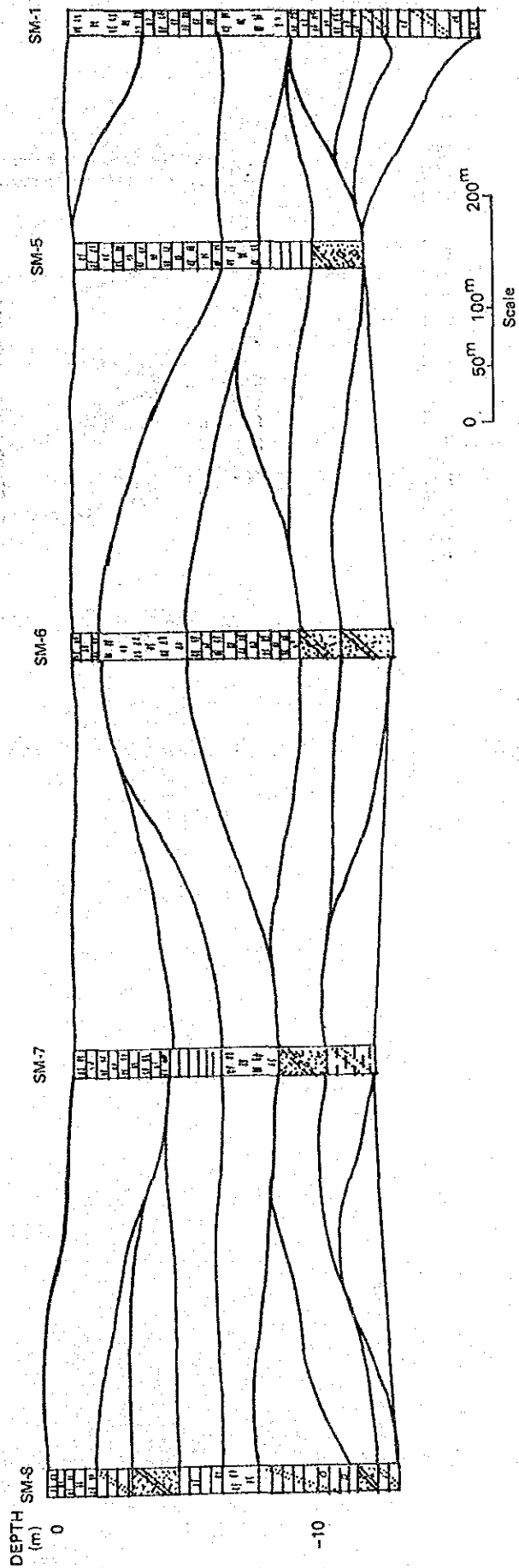
図付-8 土質分布(断面⑦-⑦)



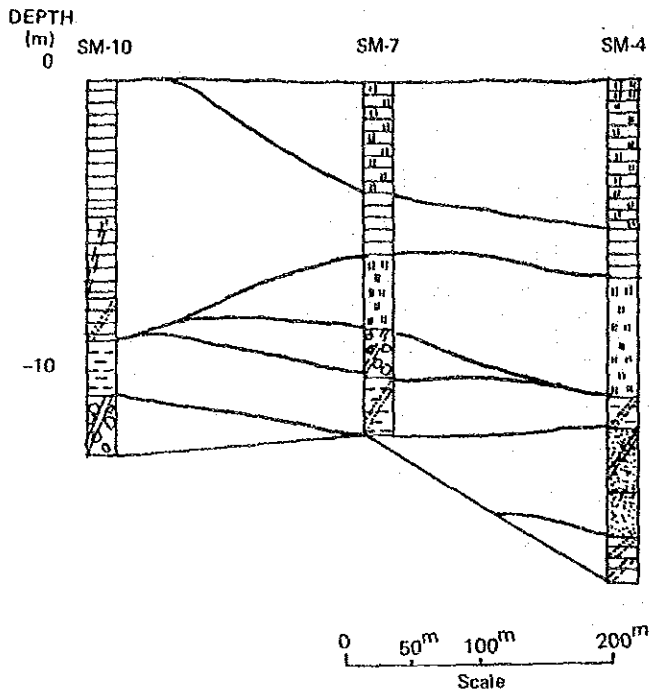
図付-9 土質分布(断面⑧-⑧)



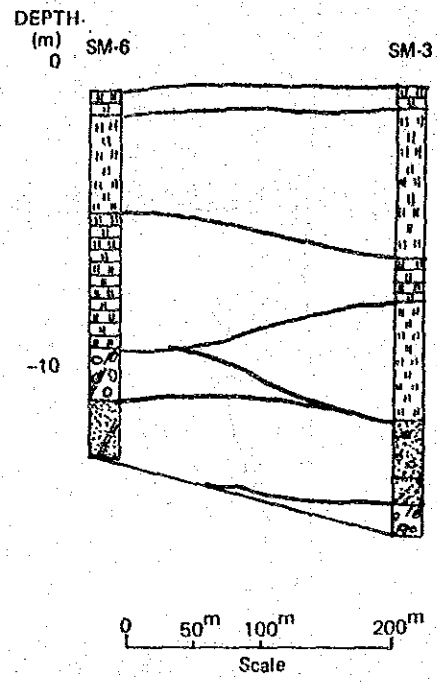
図付-10 土質分布(断面⑨-⑨)



图付-111 土質分布(断面⑩--⑩)



図付-12 土質分布(断面①-①)



図付-13 土質分布(断面②-②)

2. マスタープランの施工および積算

2-1 施工数量

漁港施設の施工数量を表付-1に示す。

2-2 施工工程

漁港施設および外港部施設の施工工程を表付-2及び表付-3に示す。ただし、漁港施設の施工工程は、1990年以前と1990年以降とに分けているだけである。また、外港施設の施工工程に関しては、施工開始年を初年度とする工程を示している。

2-3 積算

漁港施設および外港部施設の積算結果を表付-4及び表付-5に示す。

表付-1 漁港施設施工数量

Facility		Unit	Quantity	Remarks
Item	Sub Item			
1. Dredging	(1) -7m Anchorage	m ³	475,000	-
	(2) -4m Anchorage	m ³	275,000	-
2. Quays	(1) -7m Quay	m	970	RC Pile, RC Sheet-pile
	(2) -4m Quay	m	800	RC Pile, RC Sheet-pile
3. Land and Road	(1) Wharf Lot	m ²	80,000	Asphalt Pavement
	(2) Road	m	1,500	Asphalt Pavement, Lighting Poles (75 sets), Lights (150 sets)
	(3) Fishery Industrial Lot	m ²	240,000	

表付-2 漁港施設施工工程

Facility		Unit	Quantity	Construction Year	
Item	Sub Item			1985 ~ 1990	1991 ~ 2000
1. Dredging	(1) -7m Anchorage	m ³	475,000		
	(2) -4m Anchorage	m ³	275,000		
2. Quays	(1) -7m Quay	m	970		
	(2) -4m Quay	m	800		
3. Land and Road	(1) Wharf Lot	m ²	80,000	(40,000 m ²)	(40,000 m ²)
	(2) Road	m	1,500	(700 m)	(800 m)
	(3) Fishery Industrial Lot	m ²	240,000		

表付 - 3 外港部施設施工工程

Facilities		Unit	Quantity	Construction Year					
Item	Sub Item			1	2	3	4	5	6
1. Terminal	(1) Wharf Repair	set	1						
	(2) Terminal	set	1						
2. Touristic Facility	(1) Seawall	m ²	1,400						
	(2) Green Area	m ²	7,500						
	(3) Parking Area	m ²	1,920						
	(4) Launch Mooring	m	15						
	(5) Slipway	m	30						

表付 - 4 漁港施設概算工事費

Facility		Unit	Quantity	Construction Cost ('000 pesos)		
Item	Sub Item			Total	Foreign Portion	Local Portion
1. Dredging	(1) -7m Anchorage	m ³	475,000	303,000	100,000	203,000
	(2) -4m Anchorage	m ³	275,000	178,000	60,000	118,000
2. Quays	(1) -7m Quay	m	970	640,000	-	640,000
	(2) -4m Quay	m	800	440,000	-	440,000
3. Land and Road	(1) Wharf Lot	m ²	80,000	118,000	-	118,000
	(2) Road	m	1,500	103,000	30,000	73,000
	(3) Fishery Industrial Lot	m ²	240,000	38,000	-	38,000
Total				1,820,000	190,000	1,630,000
Tax				139,500	-	139,500
Grand Total				1,959,500	190,000	1,769,500

表付 - 5 外港部施設概算工事費

Facilities		Unit	Quantity	Construction Cost ('000 pesos)		
Item	Sub Item			Total	Foreign Portion	Local Portion
1. Terminal	(1) Wharf Repair	set	1	40,000	6,000	34,000
	(2) Terminal	set	1	113,000	53,000	60,000
2. Touristic Facility	(1) Seawall	m	1,140	291,000	-	291,000
	(2) Green Area	m ²	7,500	55,000	-	55,000
	(3) Parking Area	m ²	1,920	5,000	-	5,000
	(4) Launch Mooring	m	15	11,000	-	11,000
	(5) Slipway	m	30	15,000	-	15,000
Total				530,000	59,000	471,000
Tax				46,000	-	46,000
Grand Total				576,000	59,000	517,000

3. 短期計画の施工および積算

3-1 施工数量

漁港施設の施工数量を表付-6に示す。

表付-6 漁港施設施工数量

Facilities		Unit	Quantity	Remarks
Item	Sub Item			
1. Dredging	(1) Anchorage	m ³	475,000	-
2. Quays	(1) -7m Quay	m	840	RC Pile, RC Sheet-pile
	(2) -4m Quay	m	80	RC Pile, RC Sheet-pile
3. Land and Road	(1) Wharf Lot	m ²	40,000	Asphalt Pavement, Lighting Pole (35
	(2) Road	m	700	Asphalt Pavement, Lighting Pole (35 set), Light (70 set)

3-2 積算

漁港施設の積算結果を表付-7に示す。

表付-7 漁港施設概算工事費

Facility		Unit	Quantity	Construction Cost ('000 pesos)		
Item	Sub Item			Total	Foreign Portion	Local Portion
1. Dredging	(1) Anchorage	m ³	475,000	305,000	101,000	204,000
2. Quays	(1) -7m Quay	m	840	554,000	-	554,000
	(2) -4m Quay	m	80	44,000	-	44,000
3. Land and Road	(1) Wharf Lot	m ²	40,000	59,000	-	59,000
	(2) Road	m	700	19,000	6,000	13,000
Total				981,000	107,000	874,000
Tax				72,000	-	72,000
Grand Total				1,053,000	107,000	946,000

4. 財務分析に関する財務諸表

4-1 基本ケースにおける財務諸表

固定資産推移, 損益計算書, 資金運用調達表及び貸借対照表を表付-8, 付-9, 付-10及び付-11に示す。

4-2 サービス公社の財務諸表

サービス公社に関する損益計算書及び資金運用調達表を表付-12と表付-13に示す。

4-3 代替ケースにおける財務諸表

代替ケースの場合の損益計算書及び資金運用調達表を表付-14と表付-15に示す。

表付 - 8 固定資産状況

(Unit: '000,000 pesos)

Item	1985	1986	1987	1988	1989	1990
Fixed Assets at Beginning of Year	4,830	5,562	6,638	7,519	8,271	10,616
Non Depreciable Assets (Land)	0	0	0	0	170	170
Depreciable Assets	7,980	8,319	8,769	9,545	10,158	11,791
Depreciation	3,151	3,403	3,662	3,910	4,174	4,457
Written down Value	4,830	4,917	5,108	5,636	5,985	7,334
Construction in Process	0	645	1,530	1,883	2,116	3,112
Investment	984	1,335	1,129	1,016	2,628	
Existing Facilities	789					
New Facilities	195	1,335	1,129	1,016	2,628	
Depreciation	252	259	248	264	283	336
Fixed Assets at End of Year	5,562	6,638	7,519	8,271	10,616	10,280
Non Depreciable Assets (Land)	0	0	0	170	170	187
Depreciable Assets	8,319	8,769	9,545	10,158	11,791	14,886
Depreciation	3,403	3,662	3,910	4,174	4,457	4,793
Written down Value	4,917	5,108	5,636	5,985	7,334	10,093
Construction in Process	645	1,530	1,883	2,116	3,112	0

Item	1991	1992	1993	1994	1995	1996
Fixed Assets at Beginning of Year	10,280	9,627	8,975	8,334	7,701	7,081
Non Depreciable Assets (Land)	187	187	187	187	187	187
Depreciable Assets	14,886	14,886	14,886	14,886	14,886	14,886
Depreciation	4,793	5,446	6,098	6,739	7,372	7,992
Written down Value	10,093	9,440	8,788	8,147	7,514	6,894
Construction in Process						
Investment						
Existing Facilities						
New Facilities						
Depreciation	653	652	641	633	620	408
Fixed Assets at End of Year	9,627	8,975	8,334	7,701	7,081	6,673
Non Depreciable Assets (Land)	187	187	187	187	187	187
Depreciable Assets	14,886	14,886	14,886	14,886	14,886	14,886
Depreciation	5,446	6,098	6,739	7,372	7,992	8,400
Written down Value	9,440	8,788	8,147	7,514	6,894	6,486
Construction in Process						

Item	1997	1998	1999	2000	2001	2002
Fixed Assets at Beginning of Year	6,673	6,265	5,857	5,457	5,057	4,770
Non Depreciable Assets (Land)	187	187	187	187	187	187
Depreciable Assets	14,886	14,886	14,886	14,886	14,886	14,886
Depreciation	8,400	8,808	9,216	9,616	10,016	10,303
Written down Value	6,486	6,078	5,670	5,270	4,870	4,583
Construction in Process						
Investment						
Existing Facilities						
New Facilities						
Depreciation	408	408	400	400	287	257
Fixed Assets at End of Year	6,265	5,857	5,457	5,057	4,770	4,513
Non Depreciable Assets (Land)	187	187	187	187	187	187
Depreciable Assets	14,886	14,886	14,886	14,886	14,886	14,886
Depreciation	8,808	9,216	9,616	10,016	10,303	10,560
Written down Value	6,078	5,670	5,270	4,870	4,583	4,326
Construction in Process						

Item	2003	2004	2005	2006	2007	2008
Fixed Assets at Beginning of Year	4,513	4,257	4,000	3,743	3,487	3,230
Non Depreciable Assets (Land)	187	187	187	187	187	187
Depreciable Assets	14,886	14,887	14,887	14,887	14,888	14,888
Depreciation	10,560	10,817	11,074	11,331	11,588	11,845
Written down Value	4,326	4,070	3,813	3,556	3,300	3,043
Construction in Process						
Investment						
Existing Facilities						
New Facilities						
Depreciation	257	257	257	257	257	229
Fixed Assets at End of Year	4,257	4,000	3,743	3,487	3,230	3,001
Non Depreciable Assets (Land)	187	187	187	187	187	187
Depreciable Assets	14,887	14,887	14,887	14,887	14,888	14,888
Depreciation	10,817	11,074	11,331	11,588	11,845	12,074
Written down Value	4,070	3,813	3,556	3,300	3,043	2,814
Construction in Process						

Item	2009	2010	2011	2012	2013	2014
Fixed Assets at Beginning of Year	3,001	2,773	2,564	2,374	2,184	1,994
Non Depreciable Assets (Land)	187	187	187	187	187	187
Depreciable Assets	14,888	14,889	14,889	14,889	14,889	14,889
Depreciation	12,074	12,303	12,512	12,702	12,892	13,082
Written down Value	2,814	2,586	2,377	2,187	1,997	1,807
Construction in Process						
Investment						
Existing Facilities						
New Facilities						
Depreciation	229	209	190	190	190	190
Fixed Assets at End of Year	2,773	2,564	2,374	2,184	1,994	1,804
Non Depreciable Assets (Land)	187	187	187	187	187	187
Depreciable Assets	14,889	14,889	14,889	14,889	14,889	14,889
Depreciation	12,303	12,512	12,702	12,892	13,082	13,272
Written down Value	2,586	2,377	2,187	1,997	1,807	1,617
Construction in Process						

表付一 9 損益計算書

(Unit: '000 pesos)

Item	1985	1986	1987	1988	1989	1990	1991	1992	1993
OPERATING REVENUES									
CHARGES FOR FACILITIES									
LOADING & UNLOADING CHARGE	196,467	220,117	243,900	267,561	291,350	315,003	325,667	335,194	346,859
CARGO HANDLING CHARGE	423,479	479,616	535,753	371,891	648,028	704,165	727,979	751,794	775,608
CHARGE FOR USE OF STORAGE	65,918	82,167	98,416	114,665	130,914	147,163	152,192	157,222	162,251
OTHER (NATIONAL)	46,000	46,000	46,000	46,000	46,000	46,000	46,000	46,000	46,000
WATER SUPPLY	11,421	12,792	14,162	15,571	16,941	18,312	18,730	19,149	19,568
TOWAGE	15,060	16,867	18,674	20,532	22,339	24,146	24,698	25,251	25,803
PORT DUES (FOREIGN TRADE)	88,523	100,844	113,146	125,467	137,770	150,091	154,919	159,748	164,576
PORT DUES (DOMESTIC TRADE)	2,760	2,657	2,548	2,447	2,337	2,236	2,392	2,539	2,696
FUMIGATION & OTHER	43,350	45,210	47,070	48,930	50,790	52,650	52,110	51,570	51,030
OTHER (COMPANY)	550	550	550	550	550	550	550	550	550
CHARGE FOR USE OF WHARF (EX)	2,265	2,820	3,375	3,945	4,500	5,055	5,535	6,000	6,400
CHARGE FOR USE OF WHARF (IM)	31,980	36,300	40,620	44,970	49,290	53,610	54,480	55,380	56,250
CHARGE FOR USE OF WHARF (DM)	3,300	3,180	3,060	2,940	2,820	2,700	2,925	3,165	3,390
CHARGE FOR USE OF QUAYWALL	35,494	36,554	37,614	38,673	39,733	40,793	40,638	40,484	40,329
TOTAL (OPERATING REVENUES)	966,566	1,085,677	1,204,896	1,324,141	1,433,357	1,562,470	1,608,814	1,655,044	1,701,386
OPERATING EXPENSES									
PERSONNEL & OTHER (NATIONAL)	124,000	124,000	124,000	124,000	124,000	124,000	124,000	124,000	124,000
PERSONNEL & OTHER (COMPANY)	304,000	304,000	304,000	304,000	304,000	304,000	304,000	304,000	304,000
DEPRECIATION EXPENSE	252,366	259,041	247,864	263,797	202,755	336,023	653,230	651,742	640,942
MAINTENANCE & REPAIR	244,462	271,645	295,227	322,544	399,415	399,415	399,415	399,415	399,415
TOTAL (OPERATING EXPENSES)	924,824	958,687	971,091	1,011,341	1,110,170	1,163,438	1,480,653	1,179,157	1,468,357
(OPERATING PROFIT)	41,138	126,990	233,805	309,800	333,189	399,032	128,161	175,887	233,029
NON-OPERATING REVENUES									
DIVIDEND	0	14,575	14,575	14,575	14,575	14,575	14,575	14,575	14,575
TOTAL (NON-OPERATING REVENUE)	0	14,575	14,575	14,575	14,575	14,575	14,575	14,575	14,575
NON-OPERATING LOSSES									
INTEREST ON PUBLIC BOND & DEBT	0	172	5,028	9,619	15,502	54,414	54,414	54,414	54,543
INTEREST ON LONG-TERM LOAN									
NET INCOME BEFORE TAX	41,738	141,392	243,352	314,756	332,242	359,193	88,322	136,048	193,060
NET INCOME	41,738	141,392	243,352	314,756	332,262	359,193	88,322	136,048	193,040

1994	1995	1996	1997	1998	1999	2000	2001	2002	2003	2004	2005
357,523	368,187	368,187	368,187	368,187	368,187	368,187	368,187	368,187	368,187	368,187	368,187
799,423	823,237	823,237	823,237	823,237	823,237	823,237	823,237	823,237	823,237	823,237	823,237
167,281	172,310	172,310	172,310	172,310	172,310	172,310	172,310	172,310	172,310	172,310	172,310
46,000	46,000	46,000	46,000	46,000	46,000	46,000	46,000	46,000	46,000	46,000	46,000
19,987	20,406	20,406	20,406	20,406	20,406	20,406	20,406	20,406	20,406	20,406	20,406
26,355	26,907	26,907	26,907	26,907	26,907	26,907	26,907	26,907	26,907	26,907	26,907
169,405	174,233	174,233	174,233	174,233	174,233	174,233	174,233	174,233	174,233	174,233	174,233
2,843	2,999	2,999	2,999	2,999	2,999	2,999	2,999	2,999	2,999	2,999	2,999
50,490	49,950	49,950	49,950	49,950	49,950	49,950	49,950	49,950	49,950	49,950	49,950
550	550	550	550	550	550	550	550	550	550	550	550
7,020	7,560	7,560	7,560	7,560	7,560	7,560	7,560	7,560	7,560	7,560	7,560
57,120	58,020	58,020	58,020	58,020	58,020	58,020	58,020	58,020	58,020	58,020	58,020
3,615	3,840	3,840	3,840	3,840	3,840	3,840	3,840	3,840	3,840	3,840	3,840
40,175	40,020	40,020	40,020	40,020	40,020	40,020	40,020	40,020	40,020	40,020	40,020
1,747,782	1,794,217	1,794,217	1,794,217	1,794,217	1,794,217	1,794,217	1,794,217	1,794,217	1,794,217	1,794,217	1,794,217
124,000	124,000	124,000	124,000	124,000	124,000	124,000	124,000	124,000	124,000	124,000	124,000
304,000	304,000	304,000	304,000	304,000	304,000	304,000	304,000	304,000	304,000	304,000	304,000
632,625	619,998	408,153	408,153	408,153	400,000	400,000	286,685	256,685	256,685	256,685	256,685
399,415	399,415	399,415	399,415	399,415	399,415	399,415	399,415	399,415	399,415	399,415	399,415
1,460,040	1,447,413	1,235,568	1,235,568	1,227,415	1,227,415	1,227,415	1,114,100	1,084,100	1,084,100	1,084,100	1,084,100
287,742	346,804	558,649	558,649	566,802	566,802	566,802	680,117	710,117	710,117	710,117	710,117
14,575	14,575	14,575	14,575	14,575	14,575	14,575	14,575	14,575	14,575	14,575	14,575
14,575	14,575	14,575	14,575	14,575	14,575	14,575	14,575	14,575	14,575	14,575	14,575
58,200	61,661	66,100	95,417	95,463	95,513	95,564	95,618	95,675	95,734	95,796	95,861
244,116	299,717	507,124	477,807	477,761	485,864	485,813	599,074	629,017	628,958	628,896	628,831
244,116	299,717	507,124	477,807	477,761	485,864	485,813	599,074	629,017	628,958	628,896	628,831

	2006	2007	2008	2009	2010	2011	2012	2013	2014
	368,187	368,187	368,187	368,187	368,187	368,187	368,187	368,187	368,187
	823,237	823,237	823,237	823,237	823,237	823,237	823,237	823,237	823,237
	172,310	172,310	172,310	172,310	172,310	172,310	172,310	172,310	172,310
	46,000	46,000	46,000	46,000	46,000	46,000	46,000	46,000	46,000
	20,406	20,406	20,406	20,406	20,406	20,406	20,406	20,406	20,406
	26,907	26,907	26,907	26,907	26,907	26,907	26,907	26,907	26,907
	174,233	174,233	174,233	174,233	174,233	174,233	174,233	174,233	174,233
	2,999	2,999	2,999	2,999	2,999	2,999	2,999	2,999	2,999
	49,950	49,950	49,950	49,950	49,950	49,950	49,950	49,950	49,950
	550	550	550	550	550	550	550	550	550
	7,560	7,560	7,560	7,560	7,560	7,560	7,560	7,560	7,560
	58,020	58,020	58,020	58,020	58,020	58,020	58,020	58,020	58,020
	3,840	3,840	3,840	3,840	3,840	3,840	3,840	3,840	3,840
	40,020	40,020	40,020	40,020	40,020	40,020	40,020	40,020	40,020
	1,794,217	1,794,217	1,794,217	1,794,217	1,794,217	1,794,217	1,794,217	1,794,217	1,794,217
	124,000	124,000	124,000	124,000	124,000	124,000	124,000	124,000	124,000
	304,000	304,000	304,000	304,000	304,000	304,000	304,000	304,000	304,000
	256,685	256,685	228,771	228,771	208,521	189,881	189,881	189,881	189,881
	399,415	399,415	399,415	399,415	399,415	399,415	399,415	399,415	399,415
	1,084,100	1,084,100	1,056,186	1,056,186	1,035,936	1,017,296	1,017,296	1,017,296	1,017,296
	710,117	710,117	738,031	738,031	758,281	776,921	776,921	776,921	776,921
	14,575	14,575	14,575	14,575	14,575	14,575	14,575	14,575	14,575
	14,575	14,575	14,575	14,575	14,575	14,575	14,575	14,575	14,575
	95,929	96,001	96,076	96,154	96,405	100,751	91,959	85,150	106,976
	628,762	628,691	656,529	656,450	676,450	690,744	699,536	706,345	684,519
	628,762	628,691	656,529	656,450	676,450	690,744	699,536	706,345	684,519

表付一 10 貸借対照表

Note: Due to rounding error the total assets do not exactly equal the total liabilities & equity.

Item	(Unit: '000 pesos)								
	1985	1986	1987	1988	1989	1990	1991	1992	1993
ASSETS									
ASSETS									
CURRENT ASSETS									
CASH	312809	713242	1204457	1783009	2398026	3093242	3834802	4622592	5456337
SECURITIES IN CUSTODY	91091	91091	91091	91091	91091	91091	91091	91091	91091
TOTAL (CURRENT ASSETS)	403900	804333	1295548	1874100	2489117	3184333	3925893	4713683	5547428
FIXED ASSETS									
PROPERTY & EQUIPMENT									
LAND	0	0	0	170200	170200	170200	186775	186775	186775
BUILDINGS	992943	992943	992943	992943	1321943	1650943	1650943	1650943	1650943
DEPRECIATION	701481	730283	759085	787887	816689	858651	894183	929143	964103
VALUATION	291462	262660	233856	205056	505254	792292	756760	721800	686840
STRUCTURES	7054148	7054148	7830248	8443068	9683068	10102443	10102443	10102443	10102443
DEPRECIATION	2504794	2682941	2861090	3082019	3284014	3534024	3795198	4056637	4306747
VALUATION	4549354	4371207	4969158	5381046	6399049	6568409	6307233	6046058	5795684
MACHINERY & EQUIPMENT	255998	255998	255998	255998	319133	2208008	2208008	2208008	2208008
DEPRECIATION	188358	238987	248438	251039	251535	264658	498641	732623	966606
VALUATION	67640	17011	7560	4959	67598	1943349	1709365	1475381	1241397
VEHICLES	2685	2685	2685	2685	2685	460810	460810	460810	460810
DEPRECIATION	537	1074	1611	2148	2685	2685	94310	185935	277560
VALUATION	2148	1611	1074	537	0	458125	366500	274875	183250
VESSELS	13878	463878	463878	463878	463878	463878	463878	463878	463878
DEPRECIATION	8372	9252	40177	71102	102028	132953	163878	193878	223878
VALUATION	5551	454626	423701	392776	361850	330925	300000	270000	240000
CONSTRUCTION IN PROGRESS	644875	1529970	1882666	2115774	3111950	0	0	0	0
TOTAL (PROPERTY & EQUIPMENT)	5561029	6637084	7518014	8270345	10615899	10279874	9626644	8974902	8333960
TOTAL (FIXED ASSETS)	5561029	6637084	7518014	8270345	10615899	10279874	9626644	8974902	8333960
TOTAL (ASSETS)	5964929	7441417	8813562	10144445	13105016	13464207	13552537	13688585	13881388
LIABILITIES & EQUITY									
LIABILITIES									
CURRENT LIABILITIES									
FIXED LIABILITIES									
BONDS									
GOVERNMENTAL BOND (EXIST)	789000	789000	789000	789000	789000	789000	789000	789000	789000
GOVERNMENTAL BOND (NEW)	187615	1318270	2253766	3022194	4012105	4012105	4012105	4012105	4012105
TOTAL (BONDS)	976615	2107270	3042766	3811194	4801105	4801105	4801105	4801105	4801105
LONG-TERM BORROWING	7260	211170	605000	652700	2291100	2291100	2291100	2291100	2290843
TOTAL (FIXED LIABILITIES)	983875	2318970	3447766	4463894	7092205	7092205	7092205	7092205	7091948
TOTAL (LIABILITIES)	983875	2318970	3447766	4463894	7092205	7092205	7092205	7092205	7091948
EQUITY									
CAPITAL STOCK									
NET WORTH & OTHERS									
FIXED OR STOCKS	4939316	4939316	4939316	4939316	4939316	4939316	4939316	4939316	4939316
TOTAL (NET WORTH & OTHERS)	4939316	4939316	4939316	4939316	4939316	4939316	4939316	4939316	4939316
TOTAL (CAPITAL STOCK)	4939316	4939316	4939316	4939316	4939316	4939316	4939316	4939316	4939316
LEGAL RESERVE	41738	183130	426483	741239	1073501	1432694	1521016	1657064	1850124
EARNED RESERVE	41738	183130	426483	741239	1073501	1432694	1521016	1657064	1850124
TOTAL (LEGAL RESERVE)	4981054	5122446	5365798	5680554	6012817	6372010	6460332	6596380	6789440
TOTAL (EQUITY)	5964929	7441416	8813564	10144448	13105022	13464215	13552537	13688585	13881388
TOTAL (LIABILITIES & EQUITY)	5964929	7441416	8813564	10144448	13105022	13464215	13552537	13688585	13881388

1994	1995	1996	1997	1998	1999	2000	2001	2002	2003	2004	2005
6325581	7230604	8121725	8924442	9723111	10517538	11307519	12092840	12873277	13648595	14418549	15182880
91091	91091	91091	91091	91091	91091	91091	91091	91091	91091	91091	91091
6416672	7321695	8212816	9015533	9814202	10608629	11398610	12183931	12964368	13739686	14509640	15273971
186775	186775	186775	186775	186775	186775	186775	186775	186775	186775	186775	186775
1650943	1650943	1650943	1650943	1650943	1650943	1650943	1650943	1650943	1650943	1650943	1650943
999063	1034023	1068983	1103943	1138903	1173863	1208823	1243783	1278743	1313703	1348663	1383623
651880	616920	581960	547000	512040	477080	442120	407160	372200	337240	302280	267320
10102443	10102443	10102443	10102443	10102443	10102443	10102443	10102443	10102443	10102443	10102443	10102443
4548805	4790866	5011727	5232189	5452851	5665854	5878861	6091866	6304871	6517876	6730881	6943888
5533626	5311568	5090907	4870245	4649579	4436575	4223371	4010366	3797560	3584557	3371552	3158546
2208008	2208008	2208008	2208008	2208008	2208008	2208008	2208008	2208008	2208008	2208008	2208008
1200586	1421942	1544470	1667004	1789534	1911567	2033605	2042325	2051042	2059765	2068485	2077202
1087418	786062	663531	541001	418470	296435	174400	165680	156960	148240	139520	130800
460810	460810	460810	460810	460810	460810	460810	460810	460810	460810	460810	460810
369185	460810	460810	460810	460810	460810	460810	460810	460810	460810	460810	460810
91625	0	0	0	0	0	0	0	0	0	0	0
463878	463878	463878	463878	463878	463878	463878	463878	463878	463878	463878	463878
253878	283878	313878	343878	373878	403878	433878	463878	463878	463878	463878	463878
210000	180000	150000	120000	90000	60000	30000	0	0	0	0	0
0	0	0	0	0	0	0	0	0	0	0	0
7701335	7081336	6673184	6265030	5856877	5456877	5056876	4770177	4513500	4256811	4000132	3743450
7701335	7081336	6673184	6265030	5856877	5456877	5056876	4700177	4513500	4256811	4000132	3743450
14118007	14403031	14886000	15280563	15671079	16065506	16455486	16954108	17477868	17996496	18509772	19017420
789000	789000	789000	789000	789000	789000	789000	789000	789000	789000	789000	789000
4012105	4012105	4012105	4012105	4012105	4012105	4012105	4012105	4012105	4012105	4012105	4012105
4801105	4801105	4801105	4801105	4801105	4801105	4801105	4801105	4801105	4801105	4801105	4801105
2283346	2268654	2244499	2161255	2074011	1982574	1886742	1786304	1681040	1570715	1455088	1333905
7084451	7069759	7045604	6962360	6875116	6783679	6687847	6587409	6482145	6371820	6256193	6135010
7084451	7069759	7045604	6962360	6875116	6783679	6687847	6587409	6482145	6371820	6256193	6135010
4939316	4939316	4939316	4939316	4939316	4939316	4939316	4939316	4939316	4939316	4939316	4939316
4939316	4939316	4939316	4939316	4939316	4939316	4939316	4939316	4939316	4939316	4939316	4939316
4939316	4939316	4939316	4939316	4939316	4939316	4939316	4939316	4939316	4939316	4939316	4939316
2094240	2393956	2901080	3378887	3856647	4342511	4828323	5427396	6056413	6685370	7314265	7943095
2094240	2393956	2901080	3378887	3856647	4342511	4828323	5427396	6056413	6685370	7314265	7943095
7033556	7333272	7840396	8318203	8795963	9281827	9767639	10366712	10995729	11624686	12253581	12882411
14118007	14403031	14886000	15280563	15671079	16065506	16455486	16954108	17477868	17996492	18509772	19017420

2006 2007 2008 2009 2010 2011 2012 2013 2014

15941319	16693582	17439372	18178379	18909940	19625821	20359888	21108161	21815964
91091	91091	91091	91091	91091	91091	91091	91091	91091
16032410	16784672	17530463	18269460	19001031	19716912	20450979	21199252	21907055
386775	186775	186775	186775	186775	186775	186775	186775	186775
1650943	1650943	1650943	1650943	1650943	1650943	1650943	1650943	1650943
1418583	1453543	1479863	1506183	1532503	1558823	1585143	1611463	1637783
232360	197400	171080	144760	118440	92120	65800	39480	13160
10102443	10102443	10102443	10102443	10102443	10102443	10102443	10102443	10102443
7158891	7369895	7563628	7757359	7930840	8085684	8240526	8395367	8550208
2943539	2732535	2538802	2435070	2317589	22016749	1861907	1707068	1552225
2208008	2208008	2208008	2208008	2208008	2208008	2208008	2208008	2208008
2085925	2094645	2103362	2112085	2120805	2129522	2138245	2146965	2155682
122080	113360	104640	95920	87200	78480	69760	61040	52320
460810	460810	460810	460810	460810	460810	460810	460810	460810
460810	460810	460810	460810	460810	460810	460810	460810	460810
0	0	0	0	0	0	0	0	0
463878	463878	463878	463878	463878	463878	463878	463878	463878
463878	463878	463878	463878	463878	463878	463878	463878	463878
0	0	0	0	0	0	0	0	0
0	0	0	0	0	0	0	0	0
3486765	3230081	3001293	2772536	2564005	2374183	2184233	1994344	1804477
3486765	3230081	3001293	2772536	2564005	2374183	2184233	1994344	1804477
19519164	20014748	20531756	21041996	21565036	22091036	22635212	23193596	23711532
789000	789000	789000	789000	789000	789000	789000	789000	789000
4012105	4012105	4012105	4012105	4012105	4012105	4012105	4012105	4012105
4801105	4801105	4801105	4801105	4801105	4801105	4801105	4801105	4801105
1206897	1073785	934275	788060	634650	469906	314554	166601	4
6008002	5874890	5735380	5589165	5435754	5271010	5115659	4967706	4801109
6008002	5874890	5735380	5589165	5435754	5271010	5115659	4967706	4801109
4939316	4939316	4939316	4939316	4939316	4939316	4939316	4939316	4939316
4939316	4939316	4939316	4939316	4939316	4939316	4939316	4939316	4939316
4939316	4939316	4939316	4939316	4939316	4939316	4939316	4939316	4939316
8571857	9200547	9657075	10513525	11189974	11880717	12580252	13286596	13971114
8571857	9200547	9657075	10513525	11189974	11880717	12580252	13286596	13971114
13511173	14139863	14796391	15452841	16129290	16820028	17519564	18225900	18910428
19519164	20014748	20531756	21041996	21565036	22091036	22635212	23193596	23711532

表付一 11 資金運用調達表

(Unit: '000 pesos)

Item	1985	1986	1987	1988	1989	1990	1991	1992	1993
SOURCE									
LONG-TERM SOURCE									
NET INCOME	41738.	141392.	243352.	314756.	332262.	359193.	86322.	136046.	193060.
RESERVES									
DEPRECIATION RESERVES	252366.	259041.	247864.	263797.	282755.	336023.	653238.	651742.	640742.
LONG-TERM FUNDS									
BONDS									
GOVERNMENTAL BOND (EXIST)	789000.	0.	0.	0.	0.	0.	0.	0.	0.
GOVERNMENTAL BOND (NEW)	187615.	1130655.	935496.	768428.	989911.	0.	0.	0.	0.
LONG-TERM BORROWING	7260.	204440.	173300.	247700.	1638400.	0.	0.	0.	0.
TOTAL (LONG-TERM SOURCE)	1277979.	1735528.	1620011.	1594680.	3243328.	695216.	741560.	787790.	834002.
APPLICATION									
LONG-TERM APPLICATION									
WORKS OF PORT FACILITIES									
LAND	0.	37355.	141133.	4972.	3315.	0.	0.	0.	0.
BREAKWATER WATERWAY ANCHORAGE	0.	538760.	178905.	52635.	0.	0.	0.	0.	0.
BERTH & BUOY	533875.	654500.	537790.	502293.	51737.	0.	0.	0.	0.
PORT TRAFFIC	0.	0.	8520.	61363.	52842.	0.	0.	0.	0.
HANDLING EQUIPMENT	0.	0.	196068.	335545.	1919997.	0.	0.	0.	0.
PASSENGER TERMINAL	0.	13900.	0.	0.	24950.	0.	0.	0.	0.
PARK & OTHER ENVIRONMENT	0.	42180.	42180.	28120.	551270.	0.	0.	0.	0.
WATER SUPPLYING FACILITY	0.	48400.	24200.	24200.	24200.	0.	0.	0.	0.
TUG	450000.	0.	0.	0.	0.	0.	0.	0.	0.
TOTAL (WORKS OF PORT FACILI	983875.	1335095.	1128796.	1016128.	2628311.	0.	0.	0.	0.
BOND REDEMPTION									
LONG-TERM BORROWING	0.	0.	0.	0.	0.	0.	0.	0.	257.
TOTAL (BOND REDEMPTION)	0.	0.	0.	0.	0.	0.	0.	0.	257.
TOTAL (LONG-TERM APPLICATION)	983875.	1335095.	1128796.	1016128.	2628311.	0.	0.	0.	257.
SHORT-TERM SOURCE									
TOTAL (SOURCE)	1277979.	1735528.	1620011.	1594680.	3243328.	695216.	741560.	787790.	834002.
SHORT-TERM APPLICATION									
CASH INCREMENT	294104.	400433.	491215.	578552.	615017.	695216.	741560.	787790.	833746.
TOTAL (SHORT-TERM AP.)	294104.	400433.	491215.	578552.	615017.	695216.	741560.	787790.	833746.
TOTAL (APPLICATION)	1277979.	1735528.	1620011.	1594680.	3243328.	695216.	741560.	787790.	834002.

1994	1995	1996	1997	1998	1999	2000	2001	2002	2003	2004	2005
244116.	299717.	507124.	477807.	477761.	485864.	485813.	599074.	629017.	628958.	628896.	628831.
632625.	619978.	408153.	408153.	408153.	400000.	400000.	286685.	256685.	256685.	256685.	256685.
0.	0.	0.	0.	0.	0.	0.	0.	0.	0.	0.	0.
0.	0.	0.	0.	0.	0.	0.	0.	0.	0.	0.	0.
0.	0.	0.	0.	0.	0.	0.	0.	0.	0.	0.	0.
876742.	919715.	915277.	885960.	885913.	885864.	885813.	885758.	885702.	885643.	885580.	885515.
0.	0.	0.	0.	0.	0.	0.	0.	0.	0.	0.	0.
0.	0.	0.	0.	0.	0.	0.	0.	0.	0.	0.	0.
0.	0.	0.	0.	0.	0.	0.	0.	0.	0.	0.	0.
0.	0.	0.	0.	0.	0.	0.	0.	0.	0.	0.	0.
0.	0.	0.	0.	0.	0.	0.	0.	0.	0.	0.	0.
0.	0.	0.	0.	0.	0.	0.	0.	0.	0.	0.	0.
0.	0.	0.	0.	0.	0.	0.	0.	0.	0.	0.	0.
0.	0.	0.	0.	0.	0.	0.	0.	0.	0.	0.	0.
7497.	14692.	24155.	83243.	87244.	91437.	95831.	100437.	105264.	110324.	115626.	121183.
7497.	14692.	24155.	83243.	87244.	91437.	95831.	100437.	105264.	110324.	115626.	121183.
7497.	14692.	24155.	83243.	87244.	91437.	95831.	100437.	105264.	110324.	115626.	121183.
876742.	919715.	915277.	885960.	885913.	885864.	885813.	885758.	885702.	885643.	885580.	885515.
869244.	905023.	891121.	802717.	798670.	794427.	789981.	785321.	780437.	775319.	769954.	764332.
869244.	905023.	891121.	802717.	798670.	794427.	789981.	785321.	780437.	775319.	769954.	764332.
876742.	919715.	915277.	885960.	885913.	885864.	885813.	885758.	885702.	885643.	885580.	885515.

2006	2007	2008	2009	2010	2011	2012	2013	2014
628762.	628691.	656529.	656450.	676450.	690744.	699536.	706345.	684519.
256665.	256665.	228771.	228771.	208521.	189881.	189881.	189881.	189881.
0.	0.	0.	0.	0.	0.	0.	0.	0.
0.	0.	0.	0.	0.	0.	0.	0.	0.
0.	0.	0.	0.	0.	0.	0.	0.	0.
885447.	885376.	885300.	885222.	884971.	880625.	889417.	896226.	874400.
0.	0.	0.	0.	0.	0.	0.	0.	0.
0.	0.	0.	0.	0.	0.	0.	0.	0.
0.	0.	0.	0.	0.	0.	0.	0.	0.
0.	0.	0.	0.	0.	0.	0.	0.	0.
0.	0.	0.	0.	0.	0.	0.	0.	0.
0.	0.	0.	0.	0.	0.	0.	0.	0.
0.	0.	0.	0.	0.	0.	0.	0.	0.
0.	0.	0.	0.	0.	0.	0.	0.	0.
0.	0.	0.	0.	0.	0.	0.	0.	0.
0.	0.	0.	0.	0.	0.	0.	0.	0.
127008.	133112.	139510.	146215.	153411.	164744.	155351.	147953.	166597.
127008.	133112.	139510.	146215.	153411.	164744.	155351.	147953.	166597.
127008.	133112.	139510.	146215.	153411.	164744.	155351.	147953.	166597.
885447.	885376.	885300.	885222.	884971.	880625.	889417.	896226.	874400.
758439.	752263.	745790.	739007.	731561.	715881.	734067.	748273.	707803.
758439.	752263.	745790.	739007.	731561.	715881.	734067.	748273.	707803.
885447.	885376.	885300.	885222.	884971.	880625.	889417.	896226.	874400.

表付一 12 損益計算書 (マンサニージョ港サービス公社)

(Unit: '000 pesos)

Item	1985	1986	1987	1988	1989	1990	1991	1992	1993
Operating Revenues									
Charges for Facilities	196,467	220,119	243,908	267,561	291,350	315,003	325,667	336,194	346,859
Loading & Unloading Charge	423,479	479,616	535,753	591,891	648,028	704,165	727,979	751,794	775,608
Cargo Handling Charge	11,421	12,792	14,162	15,571	16,941	18,312	18,730	19,149	19,568
Water Supply	15,060	16,867	18,674	20,532	22,339	24,146	24,698	25,251	25,803
Towage	43,350	45,210	47,070	48,930	50,790	52,650	52,110	51,570	51,030
Fumigation & Other	550	550	550	550	550	550	550	550	550
Other (Company)	550	550	550	550	550	550	550	550	550
Total (Operating Revenues)	690,327	775,154	860,118	945,034	1,029,998	1,114,825	1,149,734	1,184,507	1,219,415
Operating Expenses									
Personnel & Other (Company)	304,000	304,000	304,000	304,000	304,000	304,000	304,000	304,000	304,000
Depreciation Expense	52,662	52,662	41,485	34,635	32,529	44,619	236,544	233,048	233,048
Maintenance & Repair	79,737	79,737	79,737	88,289	128,797	128,797	128,797	128,797	128,797
Total (Operating Expenses)	436,399	436,399	425,222	426,924	465,326	477,416	667,341	665,845	665,845
(Operating Profit)									
Non-Operating Revenues									
Dividend	0	14,575	14,575	14,575	14,575	14,575	14,575	14,575	14,575
Total (Non-Operating Revenue)	0	14,575	14,575	14,575	14,575	14,575	14,575	14,575	14,575
Non-Operating Losses									
Interest on Public Bond & Debt	0	0	0	712	4,560	22,705	22,705	22,705	22,705
Interest on Long-Term Loan	0	0	0	712	4,560	22,705	22,705	22,705	22,705
Total (Non-Operating Losses)	253,927	353,329	449,470	531,973	574,687	629,278	474,262	510,532	545,460
Net Income Before Tax	253,927	353,329	449,470	531,973	574,687	629,278	474,262	510,532	545,460
Net Income									

1994	1995	1996	1997	1998	1999	2000	2001	2002	2003	2004	2005
357,523	368,187	368,187	368,187	368,187	368,187	368,187	368,187	368,187	368,187	368,187	368,187
799,423	823,237	823,237	823,237	823,237	823,237	823,237	823,237	823,237	823,237	823,237	823,237
19,987	20,406	20,406	20,406	20,406	20,406	20,406	20,406	20,406	20,406	20,406	20,406
26,355	26,907	26,907	26,907	26,907	26,907	26,907	26,907	26,907	26,907	26,907	26,907
50,490	49,950	49,950	49,950	49,950	49,950	49,950	49,950	49,950	49,950	49,950	49,950
550	550	550	550	550	550	550	550	550	550	550	550
1,254,325	1,289,235	1,289,235	1,289,235	1,289,235	1,289,235	1,289,235	1,289,235	1,289,235	1,289,235	1,289,235	1,289,235
304,000	304,000	304,000	304,000	304,000	304,000	304,000	304,000	304,000	304,000	304,000	304,000
233,048	220,421	30,496	30,496	30,496	30,000	30,000	30,000	0	0	0	0
128,797	128,797	128,797	128,797	128,797	128,797	128,797	128,797	128,797	128,797	128,797	128,797
665,845	653,218	463,293	463,293	463,293	462,797	462,797	462,797	432,797	432,797	432,797	432,797
14,575	14,575	14,575	14,575	14,575	14,575	14,575	14,575	14,575	14,575	14,575	14,575
14,575	14,575	14,575	14,575	14,575	14,575	14,575	14,575	14,575	14,575	14,575	14,575
22,705	23,242	26,140	39,808	39,827	39,847	39,868	39,890	39,914	39,938	39,964	39,990
22,705	23,242	26,140	39,808	39,827	39,847	39,868	39,890	39,914	39,938	39,964	39,990
580,350	627,350	814,377	800,708	800,689	801,165	801,144	801,122	831,098	831,074	831,049	831,022
580,350	627,350	814,377	800,708	800,689	801,165	801,144	801,122	831,098	831,074	831,049	831,022

表付一 13 資金運用調達表 (マンサニージョ港サービス公社)

Item	1985	1986	1987	1988	1989	1990	1991	1992	1993
SOURCE									
LONG-TERM SOURCE									
NET INCOME	253927.	353329.	449470.	531973.	574687.	629278.	474262.	510532.	545440.
RESERVES									
DEPRECIATION RESERVES	52662.	52662.	41485.	34635.	32529.	44619.	234544.	233048.	233048.
LONG-TERM FUNDS									
BONDS									
GOVERNMENTAL BOND (EXIST)	450000.	0.	0.	0.	0.	0.	0.	0.	0.
GOVERNMENTAL BOND (NEW)	0.	0.	1568.	9045.	46147.	0.	0.	0.	0.
LONG-TERM BORROWING	0.	0.	30000.	162000.	764000.	0.	0.	0.	0.
TOTAL (LONG-TERM SOURCE)	756590.	405991.	522523.	737652.	1417362.	673898.	708807.	743580.	778488.
APPLICATION									
LONG-TERM APPLICATION									
WORKS OF PORT FACILITIES									
LAND	0.	3315.	4973.	0.	0.	0.	0.	0.	0.
HANDLING EQUIPMENT	0.	0.	31568.	171045.	810147.	0.	0.	0.	0.
TUG	450000.	0.	0.	0.	0.	0.	0.	0.	0.
TOTAL (WORKS OF PORT FACILITIES)	450000.	3315.	36541.	171045.	810147.	0.	0.	0.	0.
BOND REDEMPTION									
LONG-TERM BORROWING	0.	0.	0.	0.	0.	0.	0.	0.	0.
TOTAL (BOND REDEMPTION)	0.	0.	0.	0.	0.	0.	0.	0.	0.
TOTAL (LONG-TERM APPLICATION)	450000.	3315.	36541.	171045.	810147.	0.	0.	0.	0.
SHORT-TERM SOURCE									
TOTAL (SOURCE)	756590.	405991.	522523.	737652.	1417362.	673898.	708807.	743580.	778488.
SHORT-TERM APPLICATION									
CASH INCREMENT	306590.	402676.	485982.	566607.	607215.	673898.	708807.	743580.	778488.
TOTAL (SHORT-TERM AP.)	306590.	402676.	485982.	566607.	607215.	673898.	708807.	743580.	778488.
TOTAL (APPLICATION)	756590.	405991.	522523.	737652.	1417362.	673898.	708807.	743580.	778488.

1994	1995	1996	1997	1998	1999	2000	2001	2002	2003	2004	2005
580350.	627350.	814377.	800708.	800689.	801165.	801144.	801122.	831098.	831074.	831049.	831022.
233048.	220421.	30496.	30496.	30496.	30000.	30000.	30000.	0.	0.	0.	0.
0.	0.	0.	0.	0.	0.	0.	0.	0.	0.	0.	0.
0.	0.	0.	0.	0.	0.	0.	0.	0.	0.	0.	0.
0.	0.	0.	0.	0.	0.	0.	0.	0.	0.	0.	0.
813398.	847771.	844873.	831204.	831185.	831165.	831144.	831122.	831098.	831074.	831049.	831022.
0.	0.	0.	0.	0.	0.	0.	0.	0.	0.	0.	0.
0.	0.	0.	0.	0.	0.	0.	0.	0.	0.	0.	0.
0.	0.	0.	0.	0.	0.	0.	0.	0.	0.	0.	0.
0.	0.	0.	0.	0.	0.	0.	0.	0.	0.	0.	0.
0.	1061.	6839.	34180.	35822.	37544.	39348.	41240.	43222.	45299.	47476.	49758.
0.	1061.	6839.	34180.	35822.	37544.	39348.	41240.	43222.	45299.	47476.	49758.
0.	1061.	6839.	34180.	35822.	37544.	39348.	41240.	43222.	45299.	47476.	49758.
813398.	847771.	844873.	831204.	831185.	831165.	831144.	831122.	831098.	831074.	831049.	831022.
813398.	846710.	838034.	797024.	795363.	793621.	791796.	789882.	787876.	785775.	783573.	781264.
813398.	846710.	838034.	797024.	795363.	793621.	791796.	789882.	787876.	785775.	783573.	781264.
813398.	847771.	844873.	831204.	831185.	831165.	831144.	831122.	831098.	831074.	831049.	831022.

表付一 14 損益計算書(代替案)

Item	1985	1986	1987	1988	1989	1990	1991	1992	1993
OPERATING REVENUES									
CHARGES FOR FACILITIES									
LOADING & UNLOADING CHARGE	190588	211232	231877	252522	273167	293811	302014	310081	318284
CARGO HANDLING CHARGE	412727	460592	508457	556322	604187	652052	670123	688193	706264
CHARGE FOR USE OF STORAGE	67109	79578	92048	104517	116987	129456	133044	136632	140219
OTHER (NATIONAL)	46000	46000	46000	46000	46000	46000	46000	46000	46000
WATER SUPPLY	9670	10964	12259	13515	14809	16104	16370	16637	16903
TOWAGE	12751	14458	16164	17821	19528	21235	21586	21937	22289
PORT DUES (FOREIGN TRADE)	77238	88301	99364	110427	121490	132553	135957	139342	142746
PORT DUES (DOMESTIC TRADE)	2659	2576	2493	2401	2318	2236	2346	2456	2567
FUMIGATION & OTHER	43350	45210	47070	48930	50790	52650	52111	51572	51033
OTHER (COMPANY)	550	550	550	550	550	550	550	550	550
CHARGE FOR USE OF WHARF (EX)	2205	2730	3255	3795	4320	4855	5205	5565	5910
CHARGE FOR USE OF WHARF (IM)	30810	34560	38280	42030	45750	49500	50160	50850	51510
CHARGE FOR USE OF WHARF (DM)	3300	3165	3030	2910	2775	2640	2835	3030	3240
CHARGE FOR USE OF QUAYWALL	32927	33484	34042	34599	35157	35714	36354	36994	37634
TOTAL (OPERATING REVENUES)	931822	1033400	1134888	1236338	1337825	1439342	1474652	1509837	1545147
OPERATING EXPENSES									
PERSONNEL & OTHER (NATIONAL)	124000	124000	124000	124000	124000	124000	124000	124000	124000
PERSONNEL & OTHER (COMPANY)	304000	304000	304000	304000	304000	304000	304000	304000	304000
DEPRECIATION EXPENSE	252366	259041	247864	263797	282755	336023	653238	651742	640942
MAINTENANCE & REPAIR	244462	271646	295227	322544	399415	399415	399415	399415	399415
TOTAL (OPERATING EXPENSES)	924828	958687	971091	1014341	1110170	1163438	1480653	1479157	1468357
NON-OPERATING REVENUES									
DIVIDEND	0	14575	14575	14575	14575	14575	14575	14575	14575
TOTAL (NON-OPERATING REVENUE)	0	14575	14575	14575	14575	14575	14575	14575	14575
NON-OPERATING LOSSES									
INTEREST ON PUBLIC BOND & DEBT	0	172	5028	9619	15502	54414	54414	54414	54543
INTEREST ON LONG-TERM LOAN	7055	89115	173344	226953	226728	236065	-45840	-9159	36821
NET INCOME BEFORE TAX	7055	89115	173344	226953	216728	236065	-45840	-9159	36821
NET INCOME	7055	89115	173344	226953	216728	236065	-45840	-9159	36821

1994	1995	1996	1997	1998	1999	2000	2001	2002	2003	2004	2005
326351	334554	342620	350824	358890	367093	367093	367093	360993	367093	367093	367093
724334	742405	760475	778546	796616	814687	814687	814687	814687	814687	814687	814687
143807	147395	150983	154570	158158	161746	161746	161746	161746	161746	161746	161746
46000	46000	46000	46000	46000	46000	46000	46000	46000	46000	46000	46000
17170	17436	17703	17969	18236	18502	18502	18502	18502	18502	18502	18502
22640	22992	23343	23694	24046	24397	24397	24397	24397	24397	24397	24397
146150	149536	152940	156344	159729	163133	163133	163133	163133	163133	163133	163133
2677	2778	2889	2999	3110	3220	3220	3220	3220	3220	3220	3220
50494	49956	49417	48878	48339	47800	47800	47800	47800	47800	47800	47800
550	550	550	550	550	550	550	550	550	550	550	550
6270	6630	6990	7335	7695	8055	8055	8055	8055	8055	8055	8055
52200	52360	53550	54210	54900	55560	55560	55560	55560	55560	55560	55560
3435	3630	3825	4035	4230	4425	4425	4425	4425	4425	4425	4425
38274	38914	39554	40194	40834	41474	41474	41474	41474	41474	41474	41474
1580350	1615633	1650835	1686146	1721330	1756641	1756641	1756641	1756641	1756641	1756641	1756641
124000	124000	124000	124000	124000	124000	124000	124000	124000	124000	124000	124000
304000	304000	304000	304000	304000	304000	304000	304000	304000	304000	304000	304000
632625	619998	408153	408153	408153	400000	400000	286685	256685	256685	256685	256685
399415	399415	399415	399415	399415	399415	399415	399415	399415	399415	399415	399415
1460040	1447413	1235568	1235568	1235568	1227415	1227415	1114100	1084100	1084100	1084100	1084100
14575	14575	14575	14575	14575	14575	14575	14575	14575	14575	14575	14575
14575	14575	14575	14575	14575	14575	14575	14575	14575	14575	14575	14575
58200	61661	66100	95417	95463	95513	95564	95618	95675	95734	95796	95861
76684	121133	363742	369736	404874	448288	448237	561498	591441	591382	951320	591255
76684	121133	363742	369736	404874	448288	448237	561498	591441	591382	951320	591255

表付一 15 資金運用調達表 (代營案)

Item	1985	1986	1987	1988	1989	1990	1991	1992	1993
SOURCE									
LONG-TERM SOURCE									
NET INCOME	7055.	89115.	173344.	228953.	226728.	236065.	-45840.	-9159.	36821.
RESERVES									
DEPRECIATION RESERVES	252366.	259041.	247864.	263797.	282755.	336023.	653238.	651742.	640942.
LONG-TERM FUNDS									
BONDS									
GOVERNMENTAL BOND (EXIST)	789000.	0.	0.	0.	0.	0.	0.	0.	0.
GOVERNMENTAL BOND (NEW)	187615.	1130655.	935496.	768428.	989911.	0.	0.	0.	0.
LONG-TERM BORROWING	7260.	204440.	193300.	247700.	1638400.	0.	0.	0.	0.
TOTAL (LONG-TERM SOURCE)	1243295.	1683250.	1550003.	1506877.	3137794.	572088.	607398.	642583.	677763.
APPLICATION									
LONG-TERM APPLICATION									
WORKS OF PORT FACILITIES									
LAND	0.	37355.	141133.	4972.	3315.	0.	0.	0.	0.
BREAKWATER WATERWAY ANCHORAGE	0.	538760.	178905.	59635.	0.	0.	0.	0.	0.
BERTH & BUOY	533875.	654500.	537790.	502293.	51737.	0.	0.	0.	0.
PORT TRAFFIC	0.	0.	8520.	61363.	52842.	0.	0.	0.	0.
HANDLING EQUIPMENT	0.	0.	196068.	335545.	1919997.	0.	0.	0.	0.
PASSENGER TERMINAL	0.	13900.	0.	0.	24950.	0.	0.	0.	0.
PARK & OTHER ENVIRONMENT	0.	42180.	42180.	28120.	551270.	0.	0.	0.	0.
WATER SUPPLYING FACILITY	0.	48400.	24200.	24200.	24200.	0.	0.	0.	0.
TUG	45000.	0.	0.	0.	0.	0.	0.	0.	0.
TOTAL (WORKS OF PORT FACILITIES)	983875.	1335095.	1128796.	1016128.	2628311.	0.	0.	0.	0.
BOND REDEMPTION									
LONG-TERM BORROWING	0.	0.	0.	0.	0.	0.	0.	0.	257.
TOTAL (BOND REDEMPTION)	0.	0.	0.	0.	0.	0.	0.	0.	257.
TOTAL (LONG-TERM APPLICATION)	983875.	1335095.	1128796.	1016128.	2628311.	0.	0.	0.	257.
SHORT-TERM SOURCE									
TOTAL (SOURCE)	1243295.	1683250.	1550003.	1506877.	3137794.	572088.	607398.	642583.	677763.
SHORT-TERM APPLICATION									
CASH INCREMENT	259420.	348155.	421207.	490749.	509483.	572088.	607398.	642583.	677507.
TOTAL (SHORT-TERM AP.)	259420.	348155.	421207.	490749.	509483.	572088.	607398.	642583.	677507.
TOTAL (APPLICATION)	1243295.	1683250.	1550003.	1506877.	3137794.	572088.	607398.	642583.	677763.

JICA