

Fig. S-4 **LAND CLASSIFICATION MAP**
MAPA DE CLASIFICACION DE TIERRA

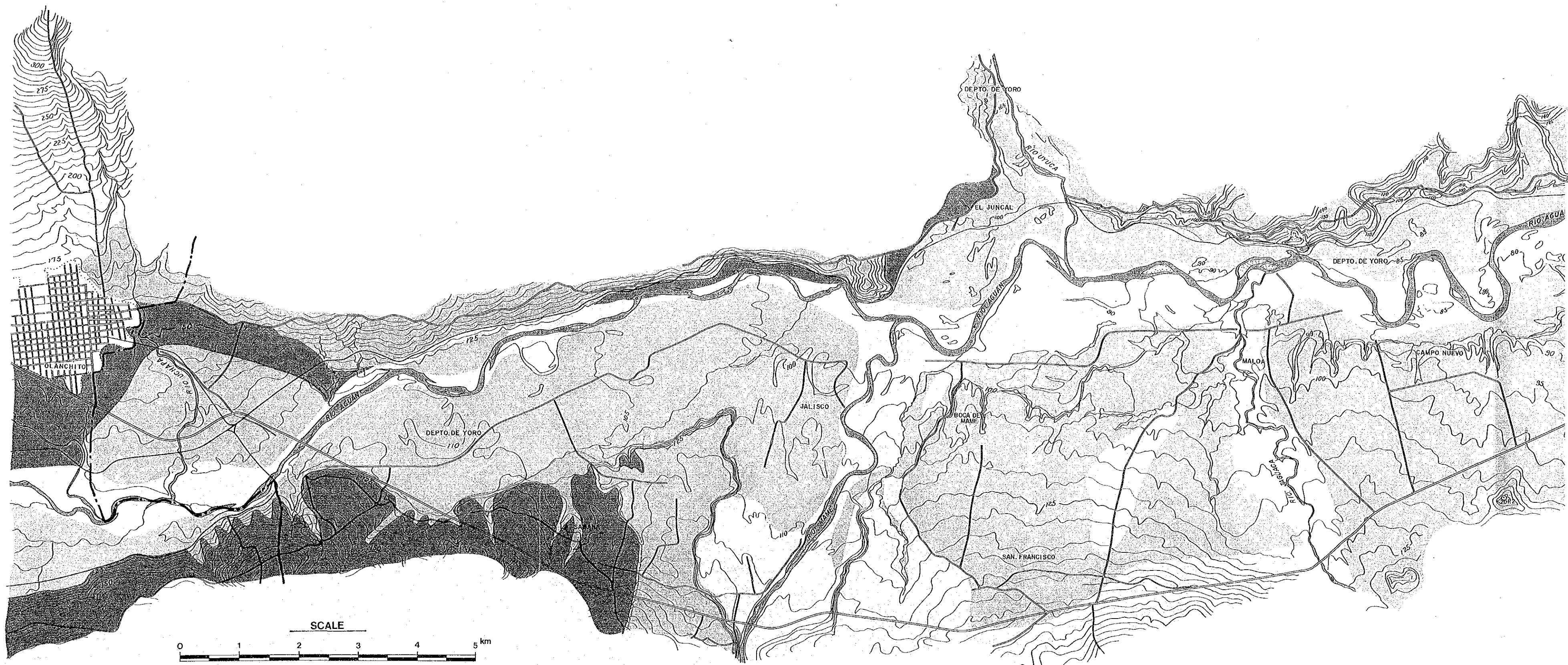
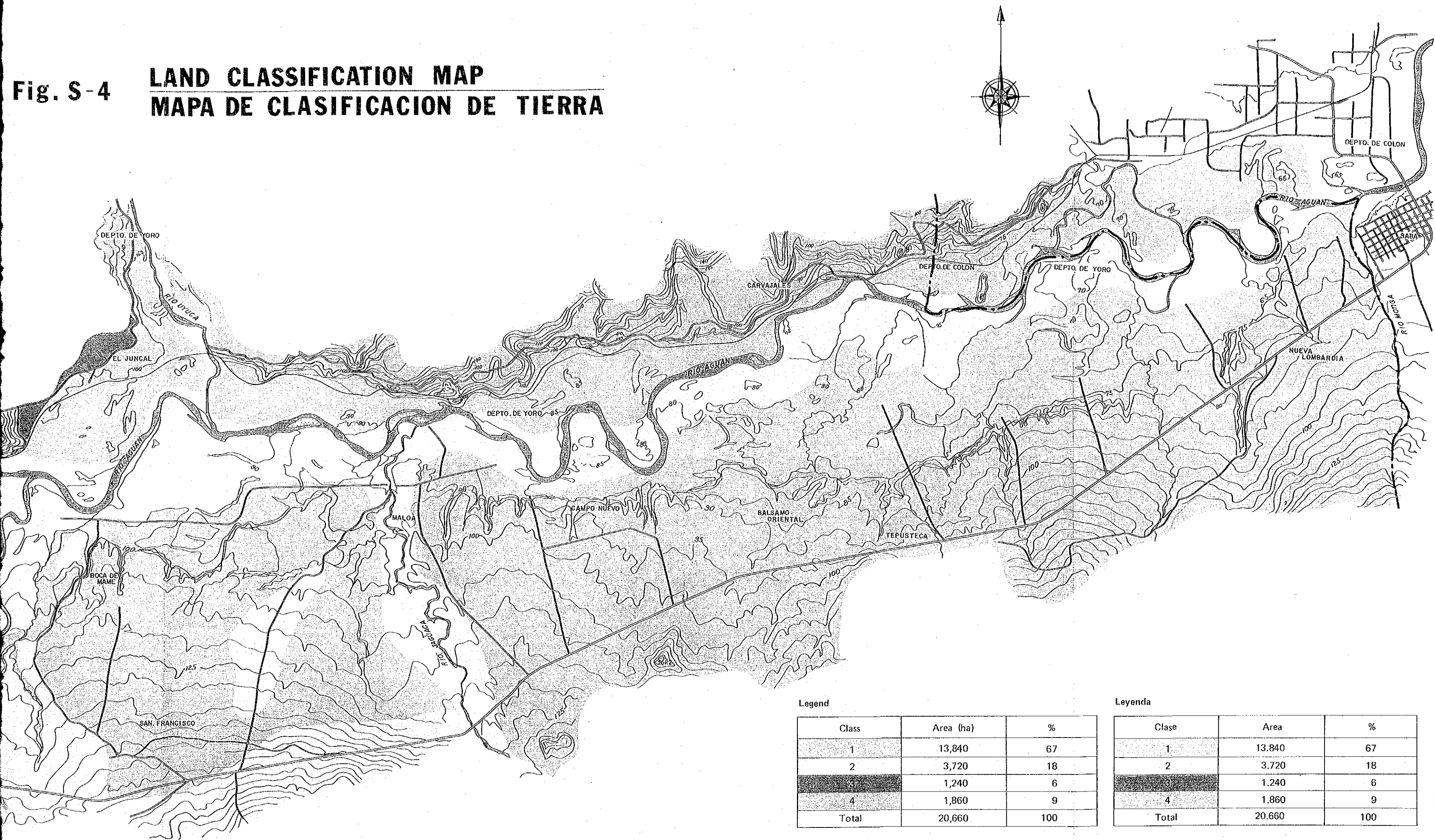


Fig. S-4

LAND CLASSIFICATION MAP
MAPA DE CLASIFICACION DE TIERRA



Legend

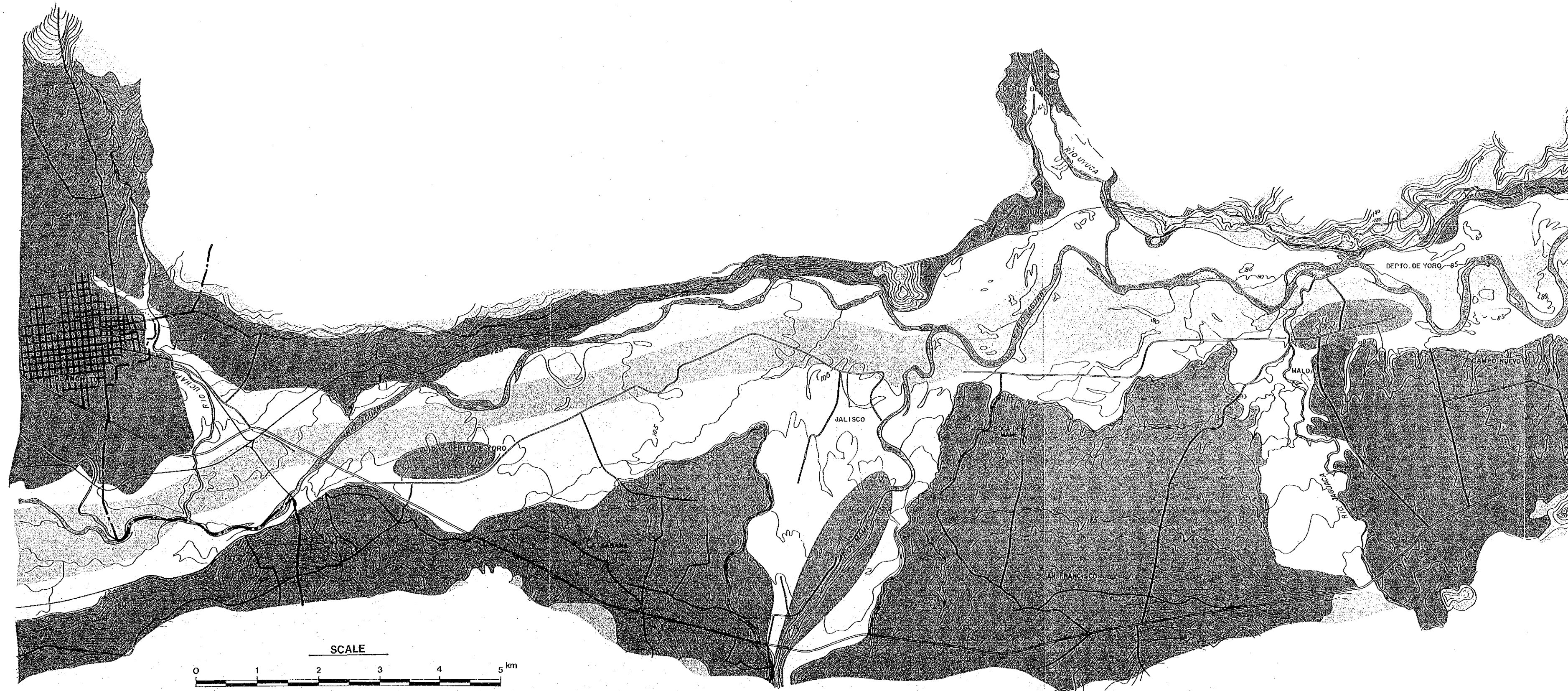
Class	Area (ha)	%
1	13,840	67
2	3,720	18
3	1,240	6
4	1,860	9
Total	20,660	100

Leyenda

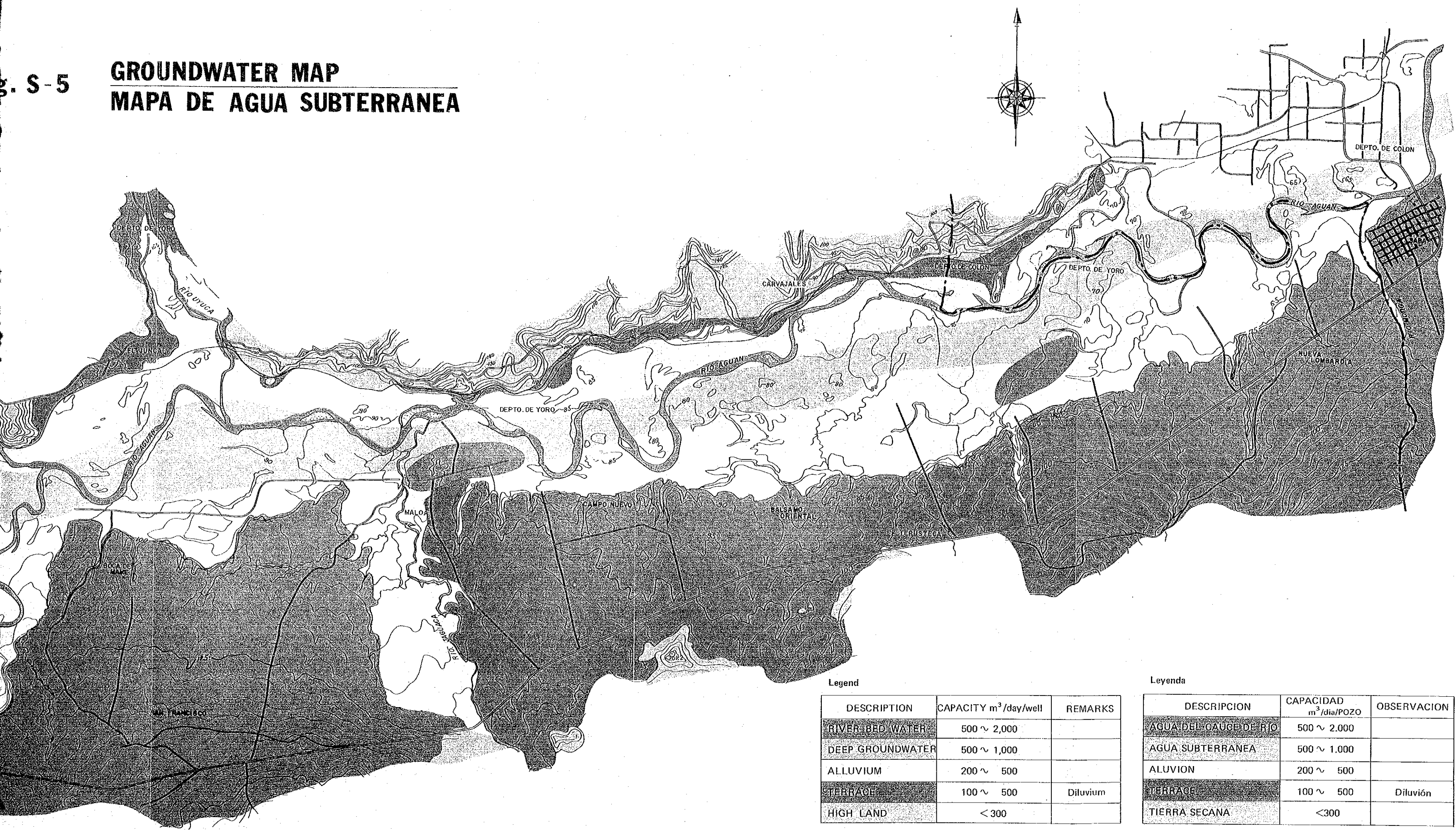
Clase	Area	%
1	13.840	67
2	3.720	18
3	1.240	6
4	1.860	9
Total	20.660	100

Fig. S-5

GROUNDWATER MAP
MAPA DE AGUA SUBTERRANEA



GROUNDWATER MAP
MAPA DE AGUA SUBTERRANEA



Legend

DESCRIPTION	CAPACITY m ³ /day/well	REMARKS
RIVER BED WATER	500 ~ 2,000	
DEEP GROUNDWATER	500 ~ 1,000	
ALLUVIUM	200 ~ 500	
TERRACE	100 ~ 500	Diluvium
HIGH LAND	< 300	

Leyenda

DESCRIPCION	CAPACIDAD m ³ /dia/POZO	OBSERVACION
AGUA DEL CAUCE DE RIO	500 ~ 2.000	
AGUA SUBTERRANEA	500 ~ 1.000	
ALUVION	200 ~ 500	
TERRACE	100 ~ 500	Diluvión
TIERRA SECANA	<300	

Fig. S-6 FLOOD AREA MAP
MAPA DE AREA INUNDADA

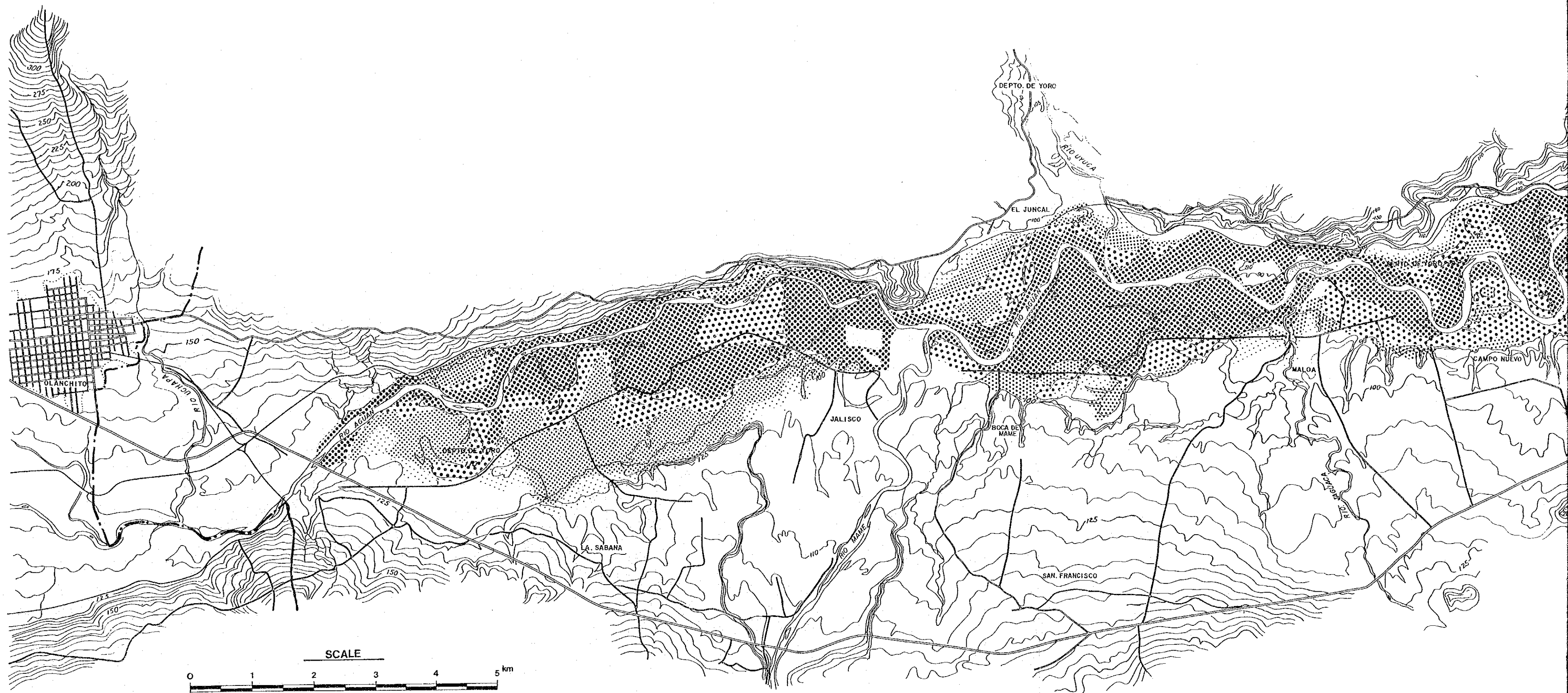


Fig. S-6 **FLOOD AREA MAP**
MAPA DE AREA INUNDADA

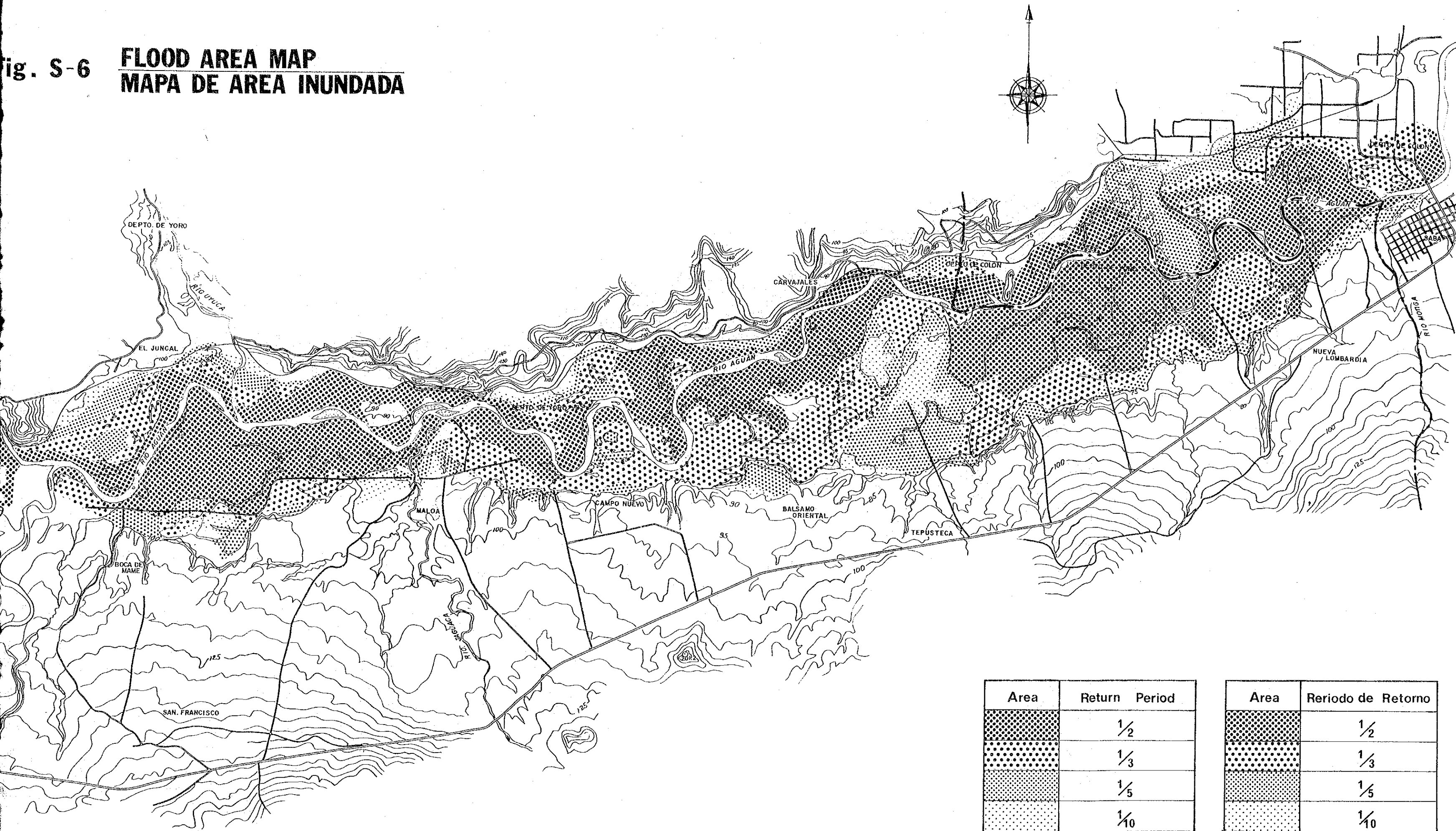


Fig. S-7 **LAND USE PLAN**
PLAN DE USO DE TIERRA

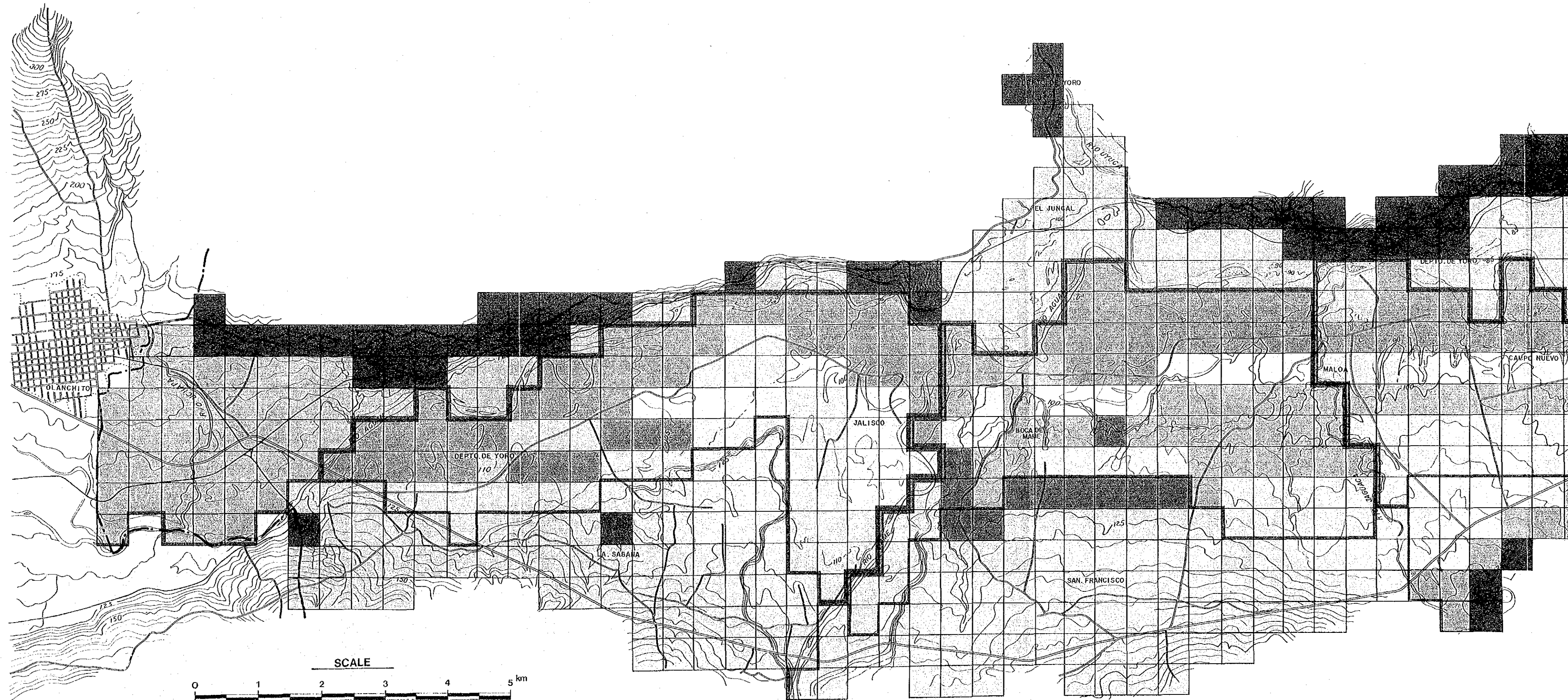
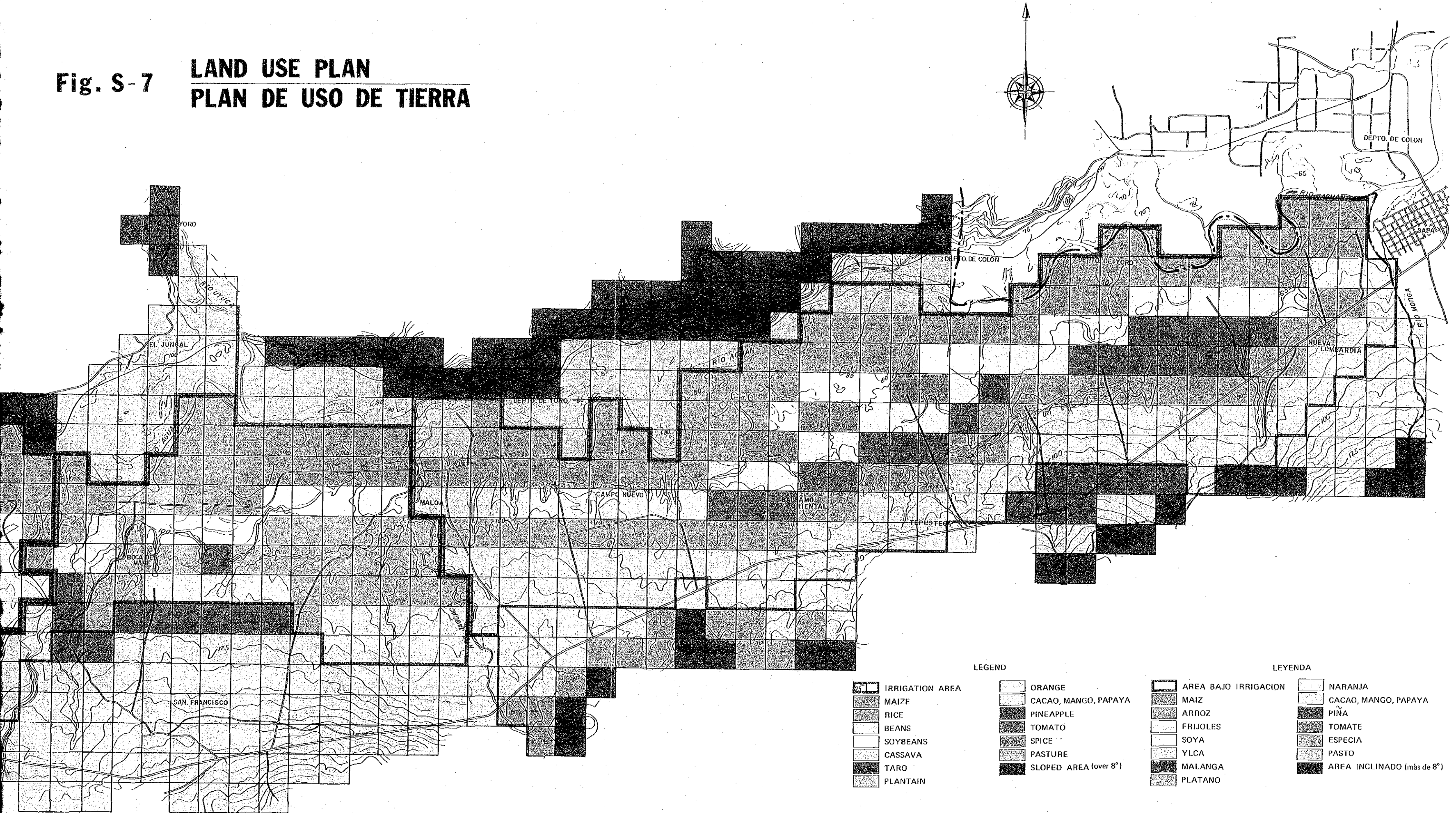


Fig. S-7

LAND USE PLAN PLAN DE USO DE TIERRA



LEGEND

- | | | | |
|--|-----------------|--|-----------------------|
| | IRRIGATION AREA | | ORANGE |
| | MAIZE | | CACAO, MANGO, PAPAYA |
| | RICE | | PINEAPPLE |
| | BEANS | | TOMATO |
| | SOYBEANS | | SPICE |
| | CASSAVA | | PASTURE |
| | TARO | | SLOPED AREA (over 8°) |
| | PLANTAIN | | |

LEYENDA

- | | | | |
|--|----------------------|--|----------------------------|
| | AREA BAJO IRRIGACION | | NARANJA |
| | MAIZ | | CACAO, MANGO, PAPAYA |
| | ARROZ | | PIÑA |
| | FRIJOLES | | TOMATE |
| | SOYA | | ESPECIA |
| | YLCA | | PASTO |
| | MALANGA | | AREA INCLINADO (más de 8°) |
| | PLATANO | | |

GLOSSARY OF ABBREVIATIONS

AID	: U.S. Agency for International Development
ANACH	: National Association of Honduran Cooperatives
BANADESA	: National Agricultural Development Bank
B/C	: Benefit - Cost Ratio
CACM	: Central America Common Market
COPALMA	: Agri-industrial Cooperative for African Oil Palm
CESAMO	: Healthy Center with Doctor
COHBANA	: Banana Corporation of Honduras
CESAR	: Rural Healthy Center
COHDEFOR	: National Forestry Corporation
CONSUPLANE	: National Economic Planning Council
CONSUPLANE/UN	: CONSUPLANE/UN Project for the Integrated Development of the Aguan Region
CONSUDE	: Swiss Corporation for Development
CORFINO	: Olancho Industrial Forestry Corporation
CASAGO	: Cooperative of Multiple Services, Agriculture and Livestock
EACI	: Isletas Cooperative of Banana Growers
EIRR	: Economic Internal Rate of Return
ENEE	: National Power Corporation
FECORAH	: Honduran Federation of Land Reform Cooperatives
FNH	: National Railway Corporation
FIRR	: Financial Internal Rate of Return
GDP	: Gross Domestic Product
GRP	: Gross Regional product
IDB	: Inter-American Development Bank
IHMA	: Honduran Agricultural Marketing Institute
INA	: National Agrarian Institute

JICA	:	Japan International Cooperation Agency
MRN	:	Ministry of Natural Resources
LANSA	:	National Airlines Co., Ltd.
LEYDE	:	Milk and By-product Co.
PROMECA	:	Programme for Agricultural Mechanization (Ministry of Natural Resources)
SAGO	:	Society of Farmers and Cattlemen of Olanchito
SECOPT	:	Ministry of Communications, Public Works and Transport
UNC	:	National Union of Campesinos
UNDP	:	United Nations Development Programme