

**THE REPUBLIC OF HONDURAS  
NATIONAL AGRARIAN INSTITUTE**

**THE FEASIBILITY STUDY  
ON  
THE AGUAN VALLEY AGRICULTURAL  
DEVELOPMENT PROJECT  
(SABA-OLANCHITO AREA)**

**FINAL REPORT  
VOLUME I-MAIN REPORT**

**JUNE 1985**

**JAPAN INTERNATIONAL COOPERATION AGENCY  
(JICA)**

A F T
<del>85-31</del>
85-31



JICA LIBRARY



1029909E7J



**THE REPUBLIC OF HONDURAS  
NATIONAL AGRARIAN INSTITUTE**

**THE FEASIBILITY STUDY  
ON  
THE AGUAN VALLEY AGRICULTURAL  
DEVELOPMENT PROJECT  
(SABA-OLANCHITO AREA)**

**FINAL REPORT**

**VOLUME I-MAIN REPORT**

**JUNE 1985**

**JAPAN INTERNATIONAL COOPERATION AGENCY  
(JICA)**

国際協力事業団	
受入 月日 '85. 8. 15	613
登録No. 11833	80.7
	AFT

## PREFACE

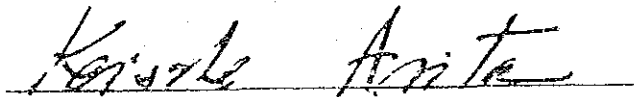
In response to the request of the Government of the Republic of Honduras, the Japanese Government decided to conduct a Feasibility Study on the Aguan Valley Agricultural Development Project and entrusted the study to the Japan International Cooperation Agency. The J.I.C.A. sent to Honduras a survey team headed by Mr. Y. Ichikawa in November, 1983.

The team exchanged views on the Project with the officials concerned of the Government of Honduras and conducted a field survey (in SABA-OLANCHITO area). After the team returned to Japan, further studies were made and the present report has been prepared.

I hope that this report will serve for the development of the Project and contribute to the promotion of friendly relations between our two countries.

I wish to express my deep appreciation to the officials concerned of the Government of the Republic of Honduras for their close cooperation extended to the team.

June, 1985

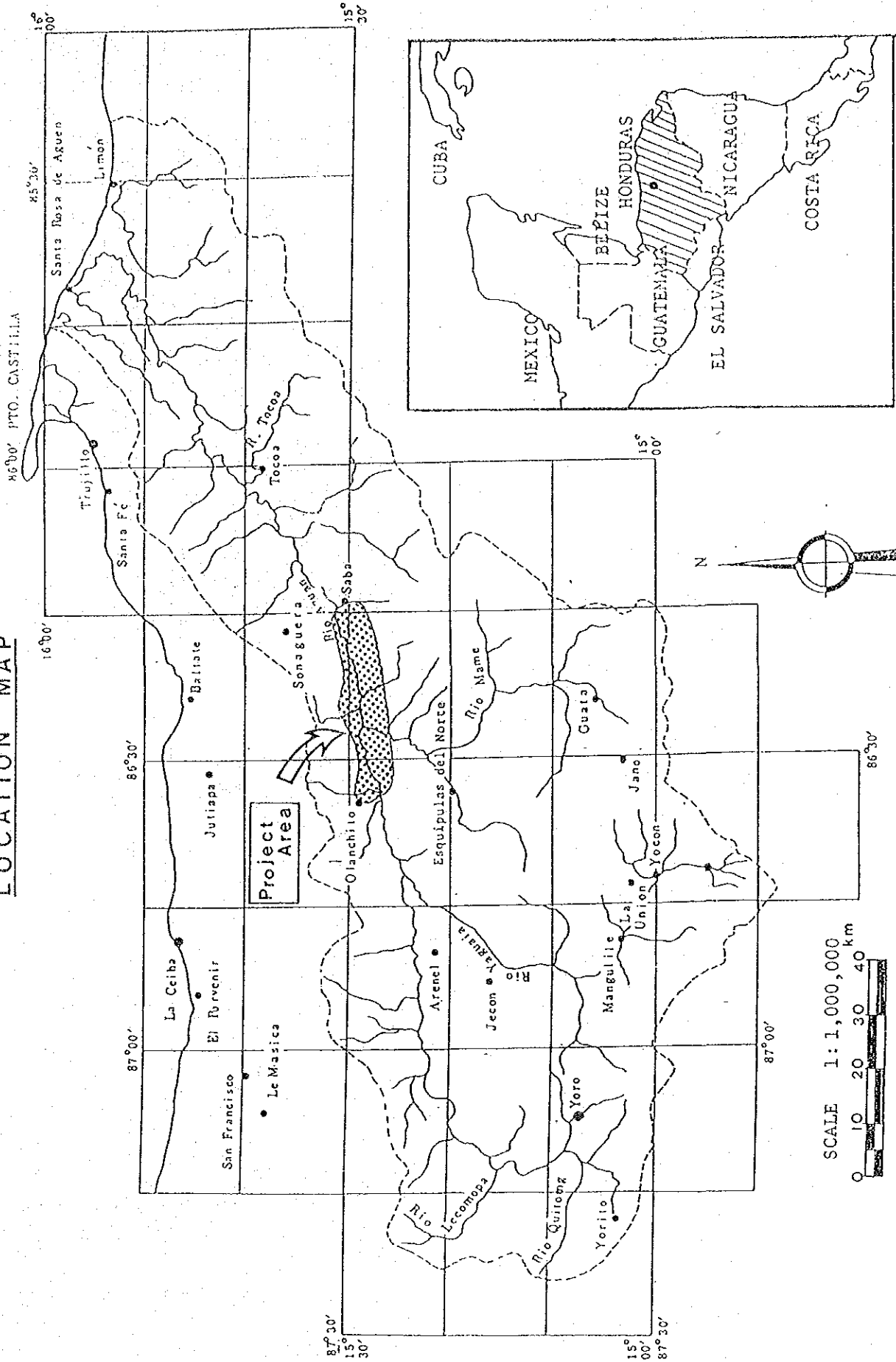
A handwritten signature in cursive script, reading "Keisuke Arita", is written over a horizontal line.

Keisuke Arita  
President  
Japan International Cooperation Agency

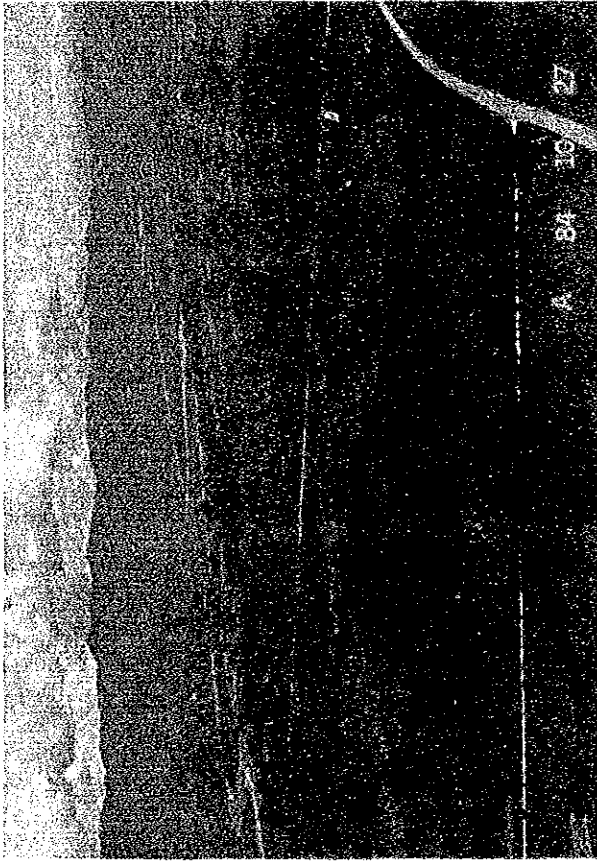




# LOCATION MAP



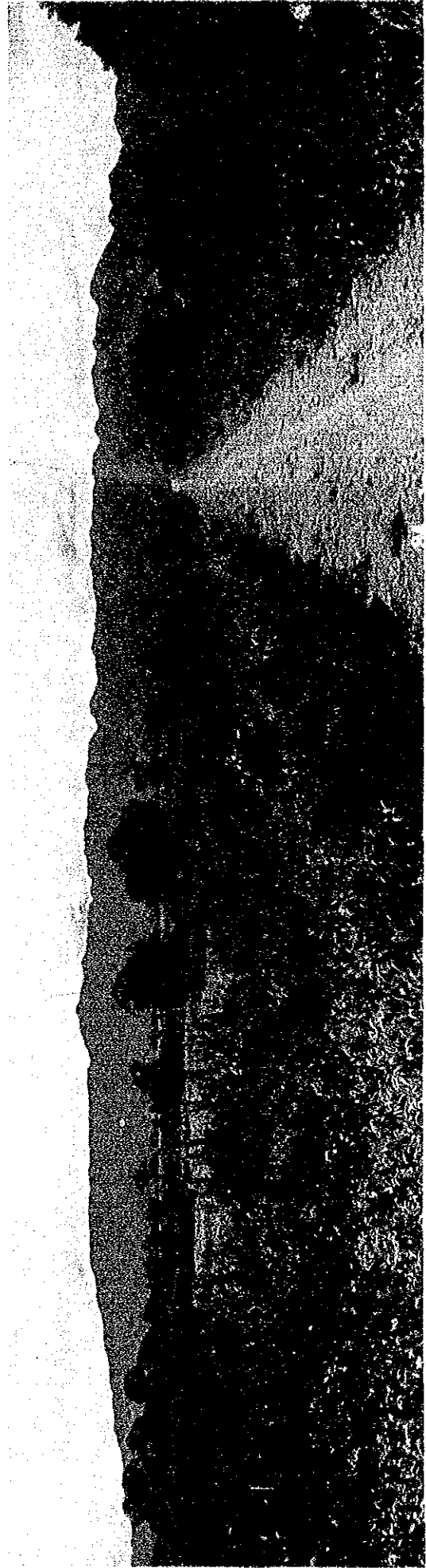




The Project Area (Right Bank of Aguan River)



Typical Farmer's House



Existing In-farm Road

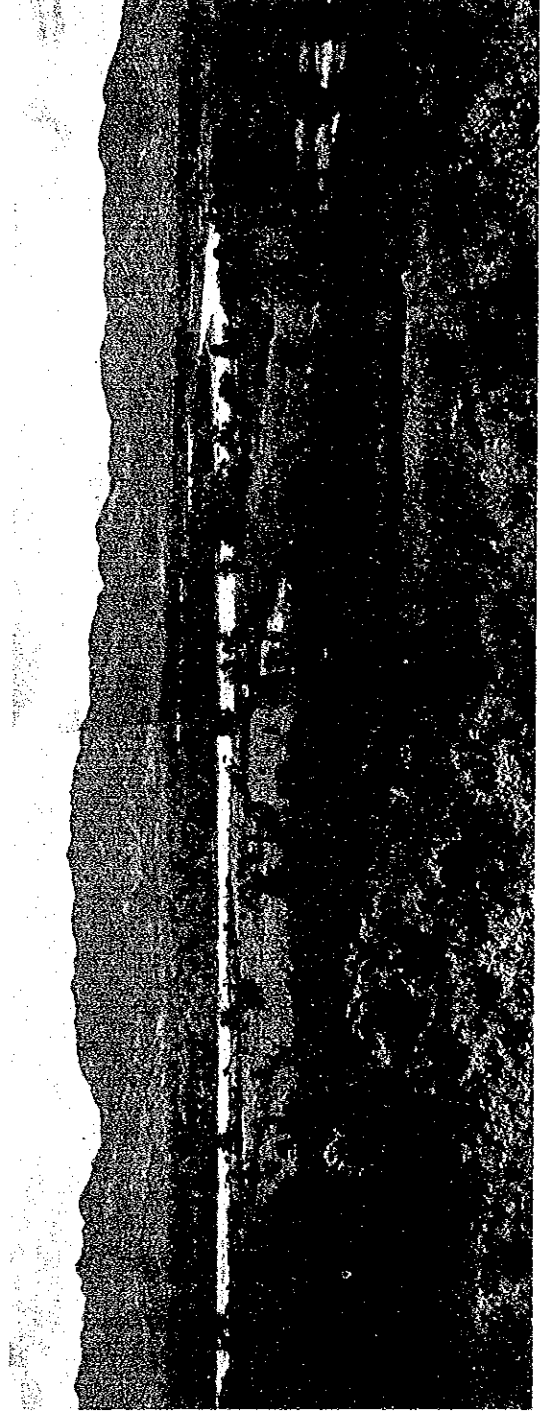




The Residences for New Settlements



Existing Farm (Table-land of Right Bank)



Existing Farm (Flood Plain of Left Bank)

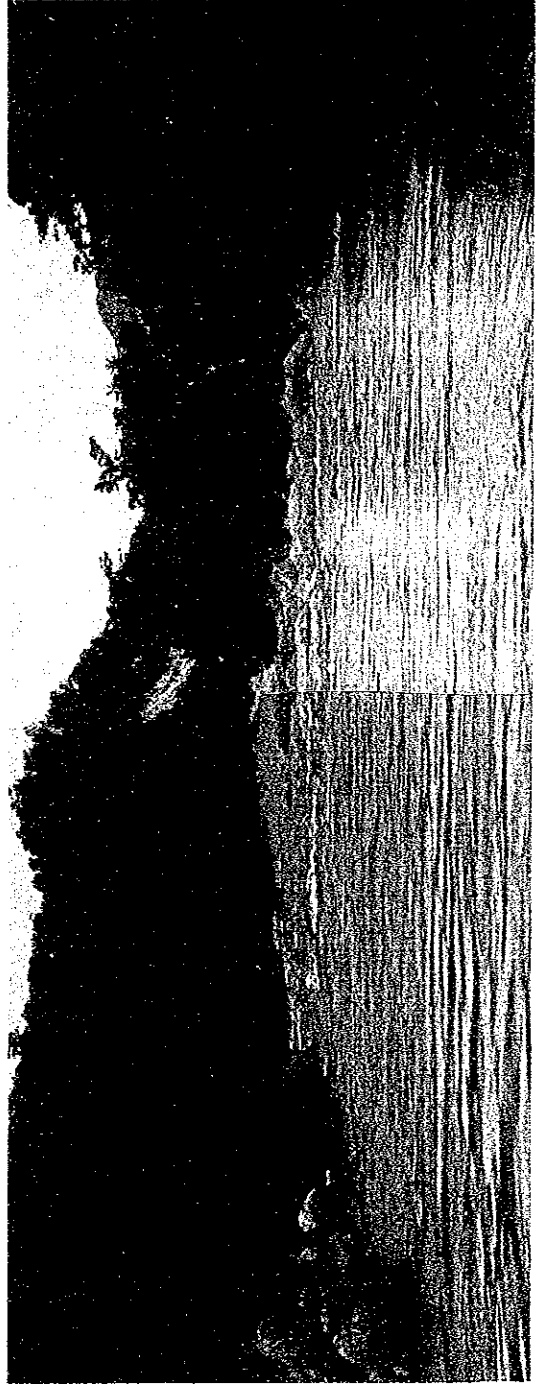




Middle Aguan Intake Point



Upper Aguan Intake Point



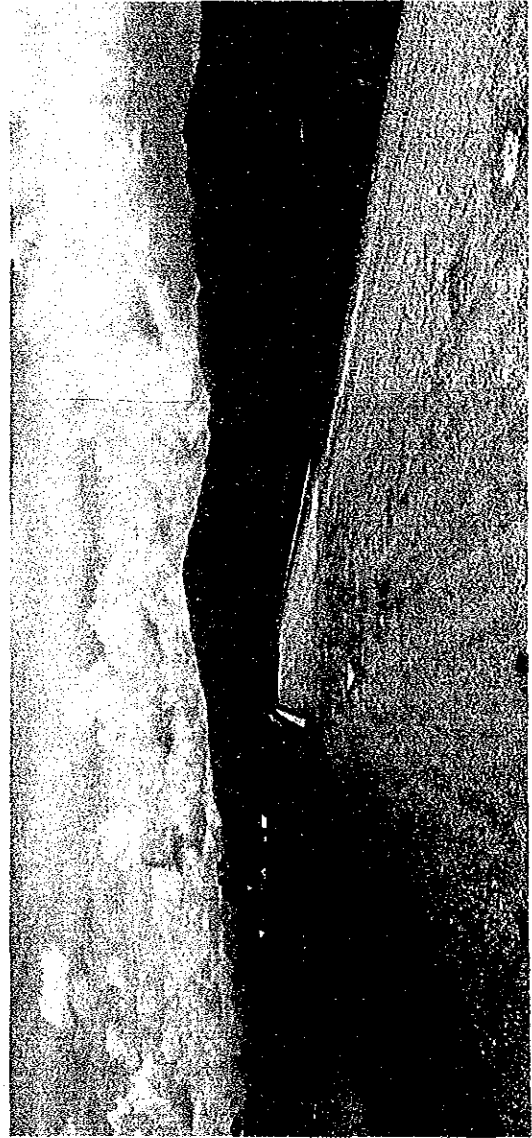
Mame River Intake Point







Proposed Intake Site on the Jaguaca River



Saba-Olanchito Highway in the Project Area (Pte. Mame)



Saba-Olanchito Highway in the Project Area





Banana Plantation (Coyoles: Standard Fruit Co.)



Banana Plantation (Coyoles: Standard Fruit Co.)

**Fig. S-1**      **GENERAL PLAN**  
**PLANO GENERAL**

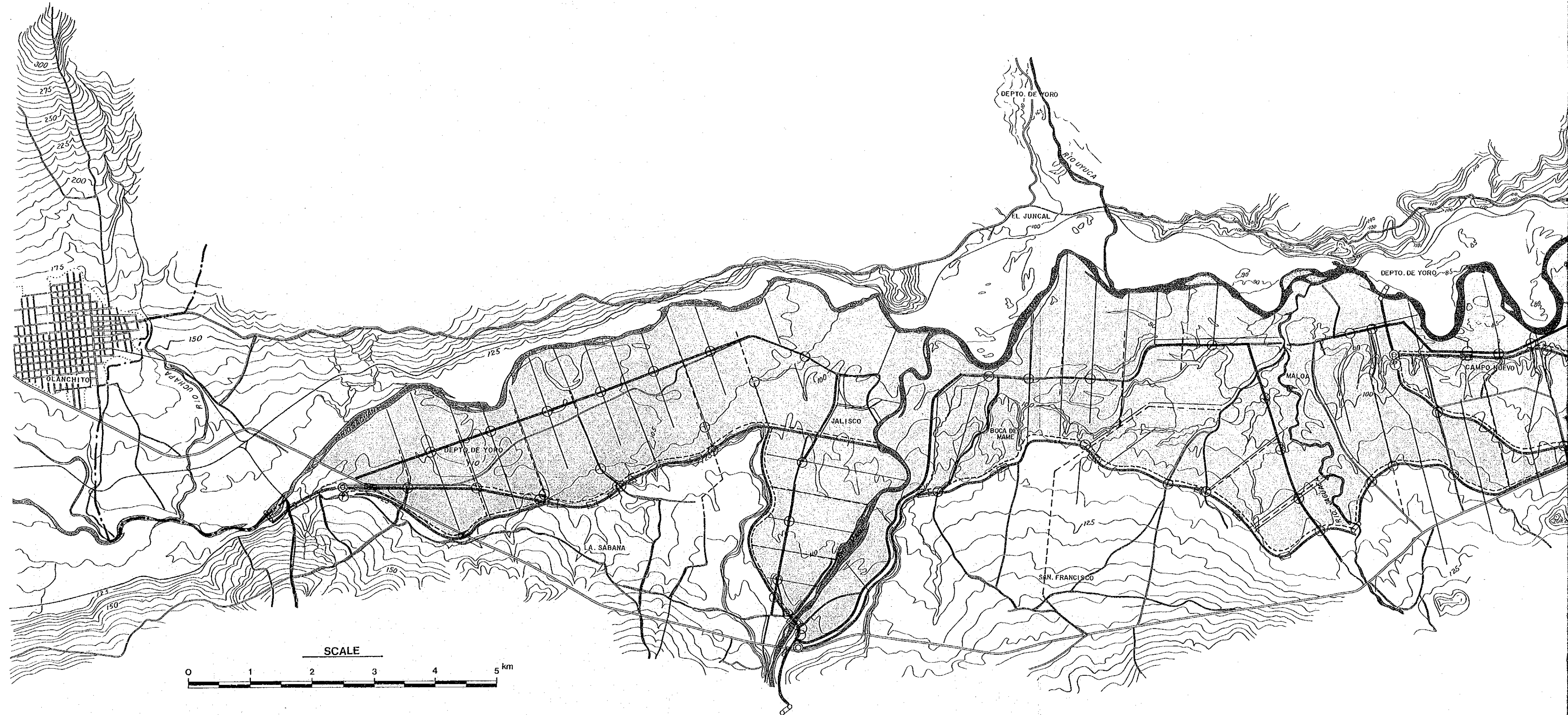
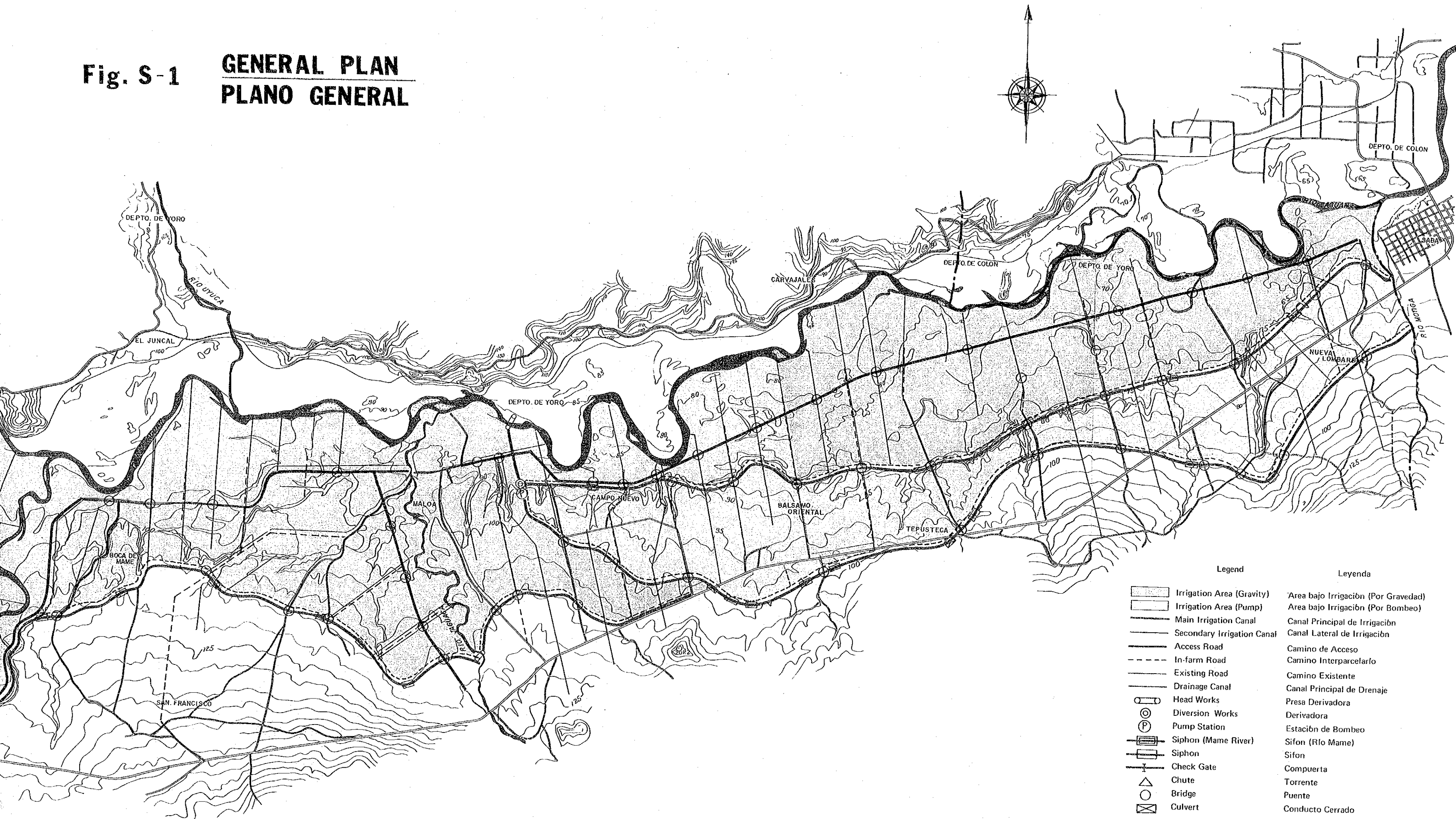

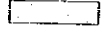
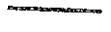
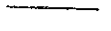

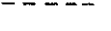
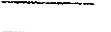
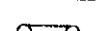
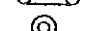

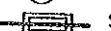

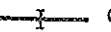






Fig. S-1

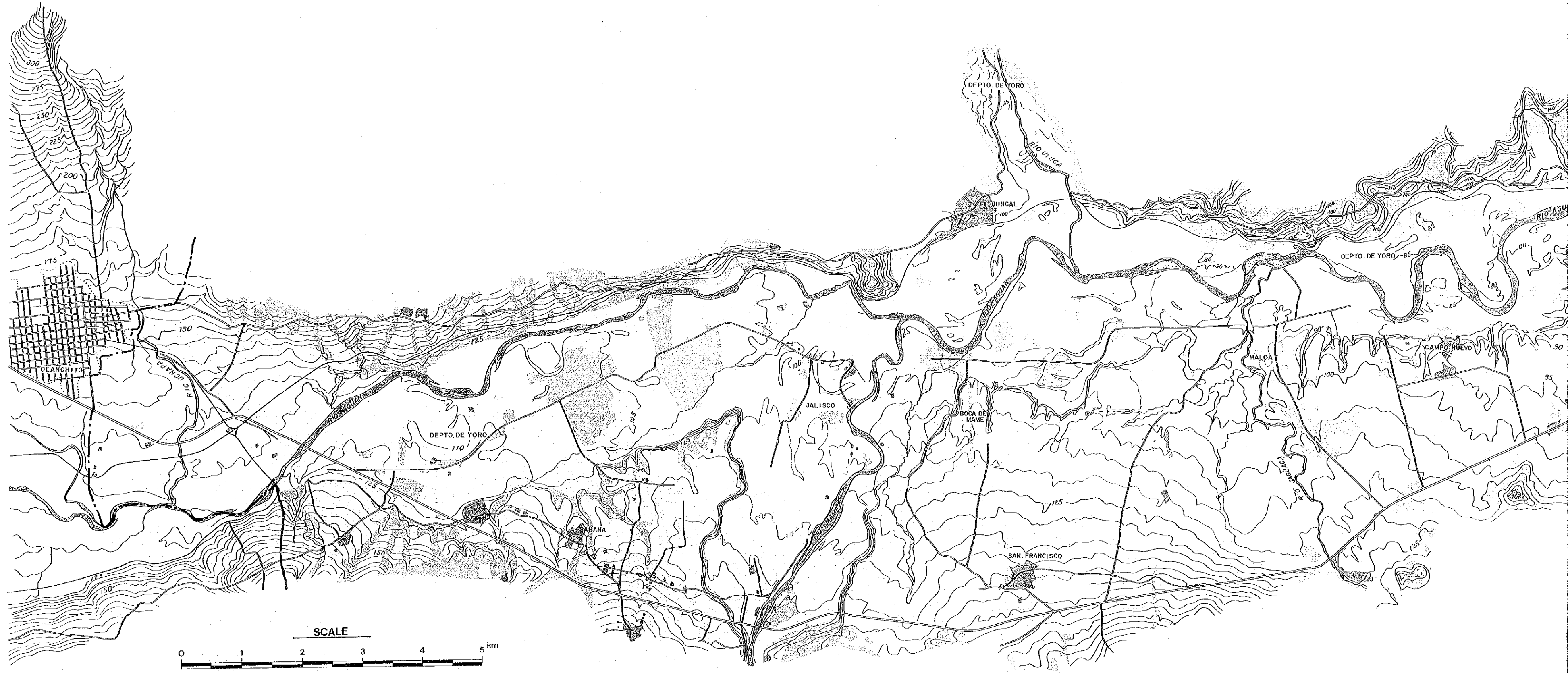
**GENERAL PLAN  
PLANO GENERAL**



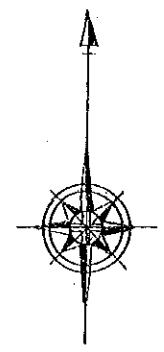
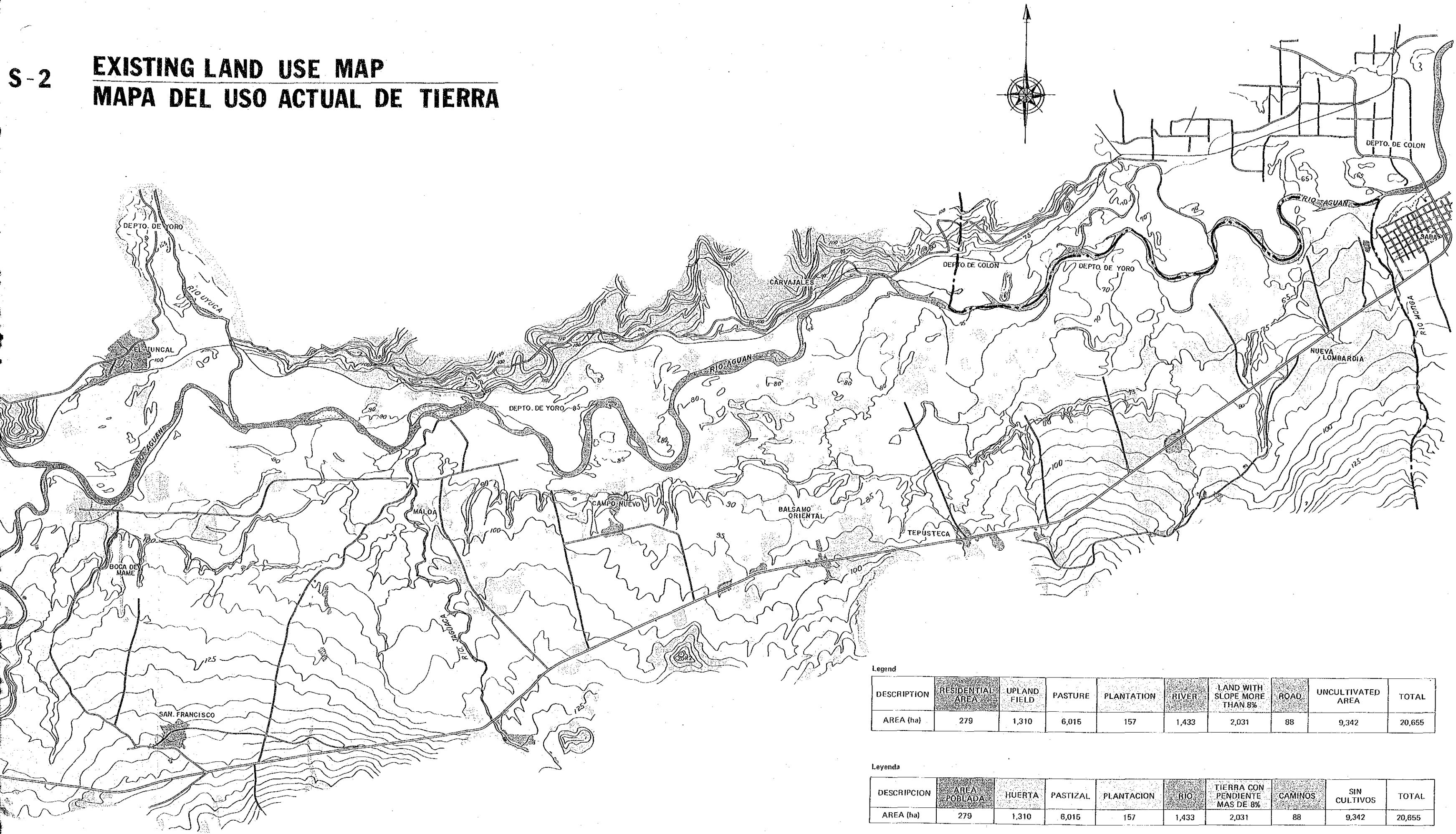
Leyenda

	Irrigation Area (Gravity)	Area bajo Irrigación (Por Gravedad)
	Irrigation Area (Pump)	Area bajo Irrigación (Por Bombeo)
	Main Irrigation Canal	Canal Principal de Irrigación
	Secondary Irrigation Canal	Canal Lateral de Irrigación
	Access Road	Camino de Acceso
	In-farm Road	Camino Interparcelario
	Existing Road	Camino Existente
	Drainage Canal	Canal Principal de Drenaje
	Head Works	Presa Derivadora
	Diversion Works	Derivadora
	Pump Station	Estación de Bombeo
	Siphon (Mame River)	Sifon (Río Mame)
	Siphon	Sifon
	Check Gate	Compuerta
	Chute	Torrente
	Bridge	Puente
	Culvert	Conducto Cerrado

**Fig. S-2**      **EXISTING LAND USE MAP**  
**MAPA DEL USO ACTUAL DE TIERRA**



**EXISTING LAND USE MAP**  
**MAPA DEL USO ACTUAL DE TIERRA**



Legend

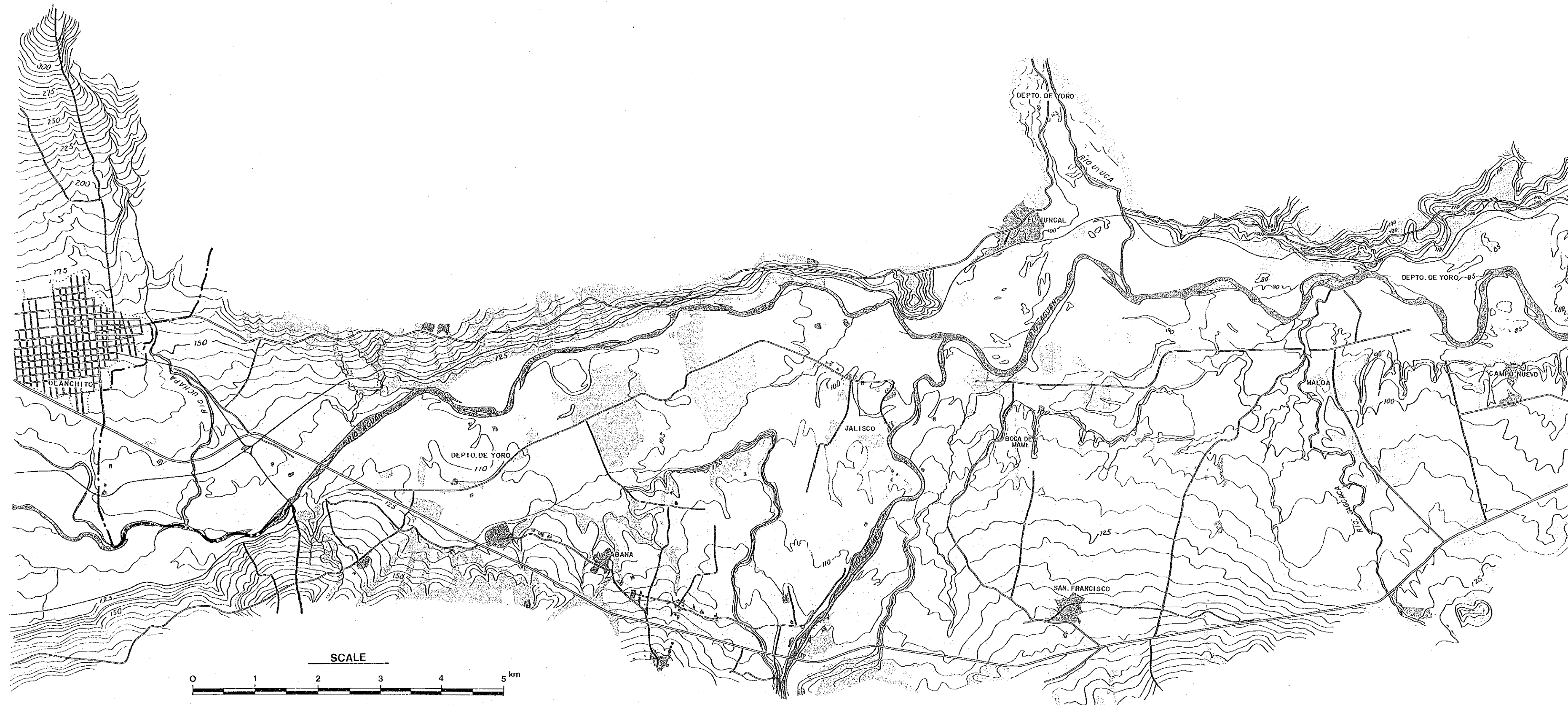
DESCRIPTION	RESIDENTIAL AREA	UPLAND FIELD	PASTURE	PLANTATION	RIVER	LAND WITH SLOPE MORE THAN 8%	ROAD	UNCULTIVATED AREA	TOTAL
AREA (ha)	279	1,310	6,015	157	1,433	2,031	88	9,342	20,655

Leyenda

DESCRIPCION	AREA POBLADA	HUERTA	PASTIZAL	PLANTACION	RIO	TIERRA CON PENDIENTE MAS DE 8%	CAMINOS	SIN CULTIVOS	TOTAL
AREA (ha)	279	1,310	6,015	157	1,433	2,031	88	9,342	20,655

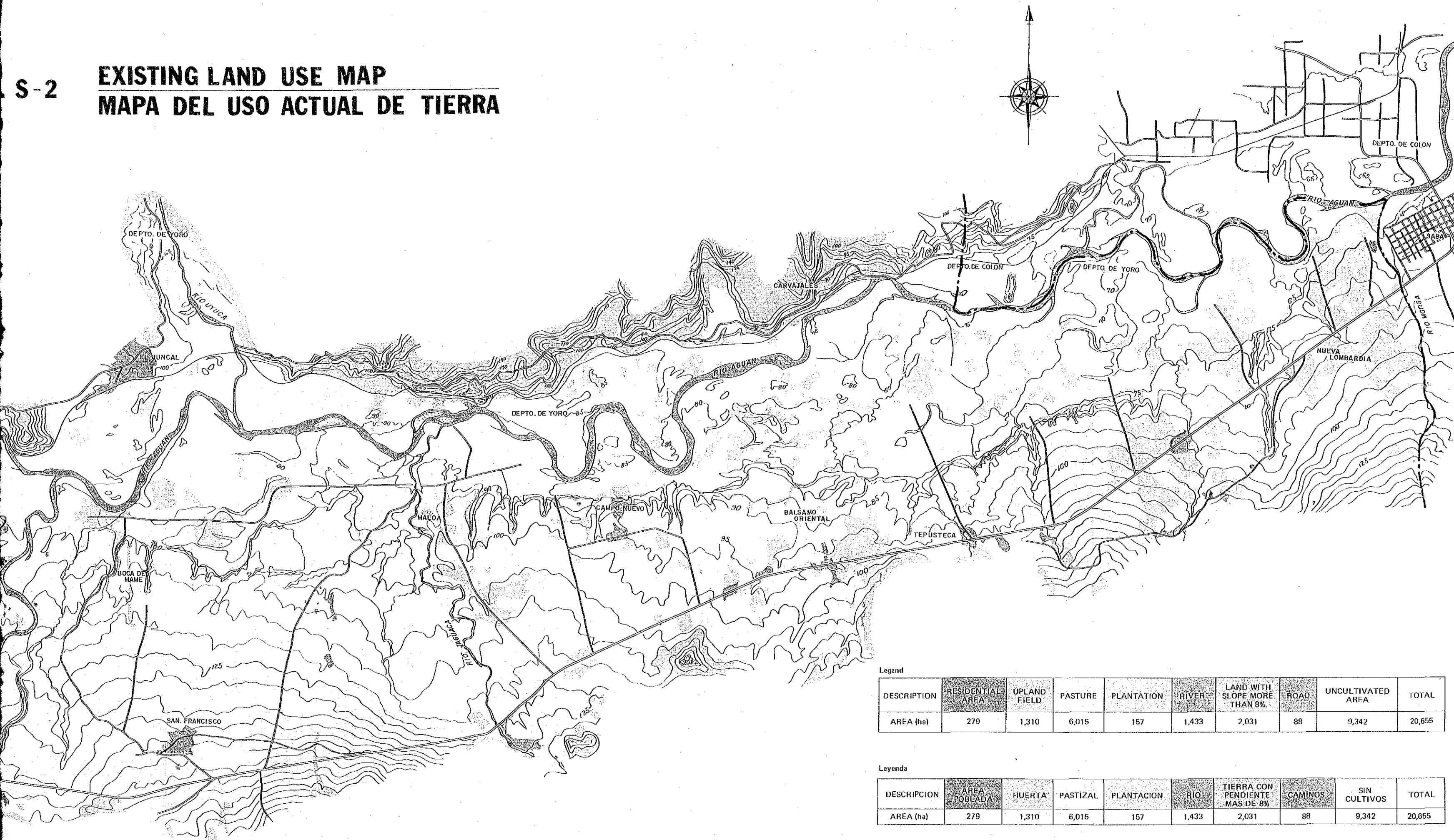
Fig. S-2

**EXISTING LAND USE MAP**  
**MAPA DEL USO ACTUAL DE TIERRA**





**EXISTING LAND USE MAP**  
**MAPA DEL USO ACTUAL DE TIERRA**



Legend

DESCRIPTION	RESIDENTIAL AREA	UPLAND FIELD	PASTURE	PLANTATION	RIVER	LAND WITH SLOPE MORE THAN 8%	ROAD	UNCULTIVATED AREA	TOTAL
AREA (ha)	279	1,310	6,015	157	1,433	2,031	88	9,342	20,655

Leyenda

DESCRIPCION	AREA POBLADA	HUERTA	PASTIZAL	PLANTACION	RIO	TIERRA CON PENDIENTE MAS DE 8%	CAMINOS	SIN CULTIVOS	TOTAL
AREA (ha)	279	1,310	6,015	157	1,433	2,031	88	9,342	20,655

Fig. S-3

SOIL MAP  
MAPA DE SUELO

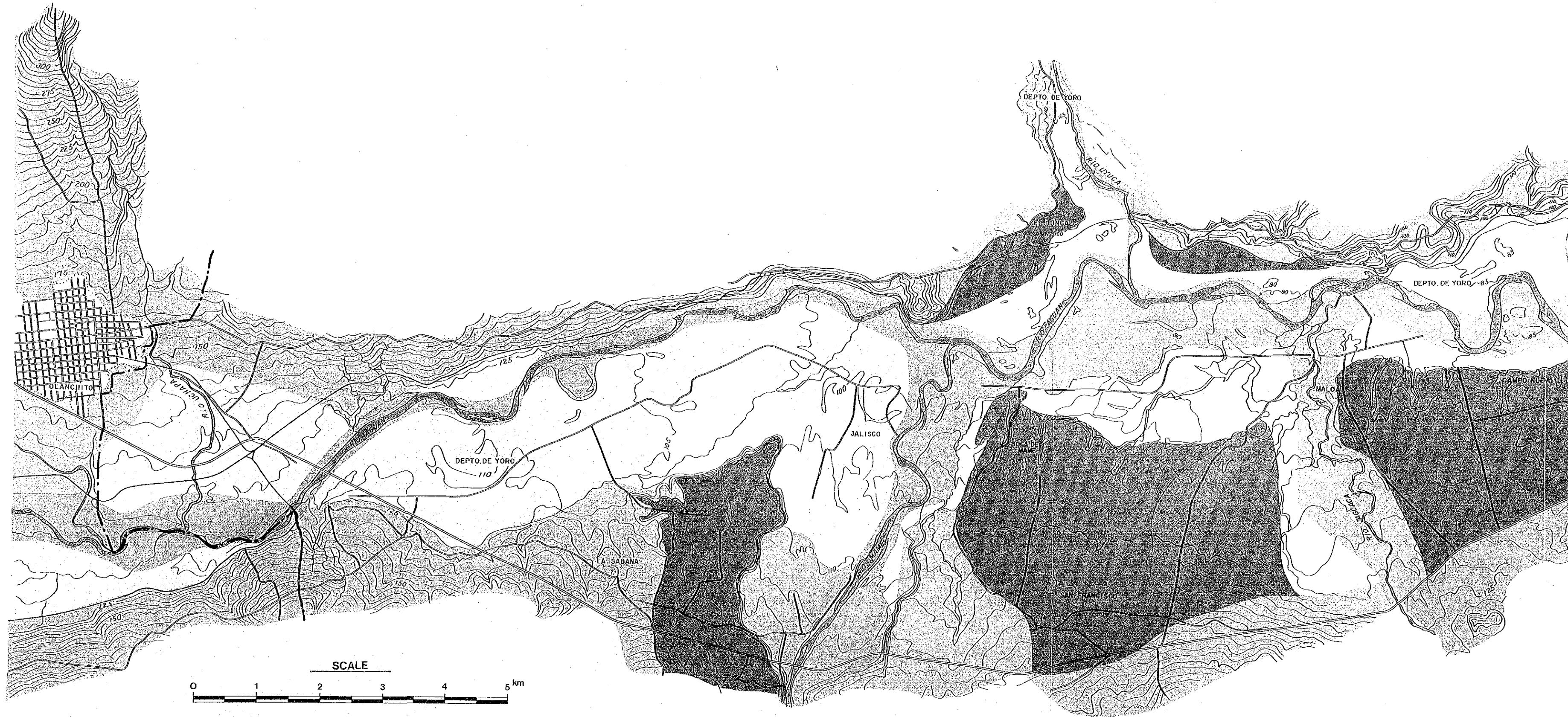
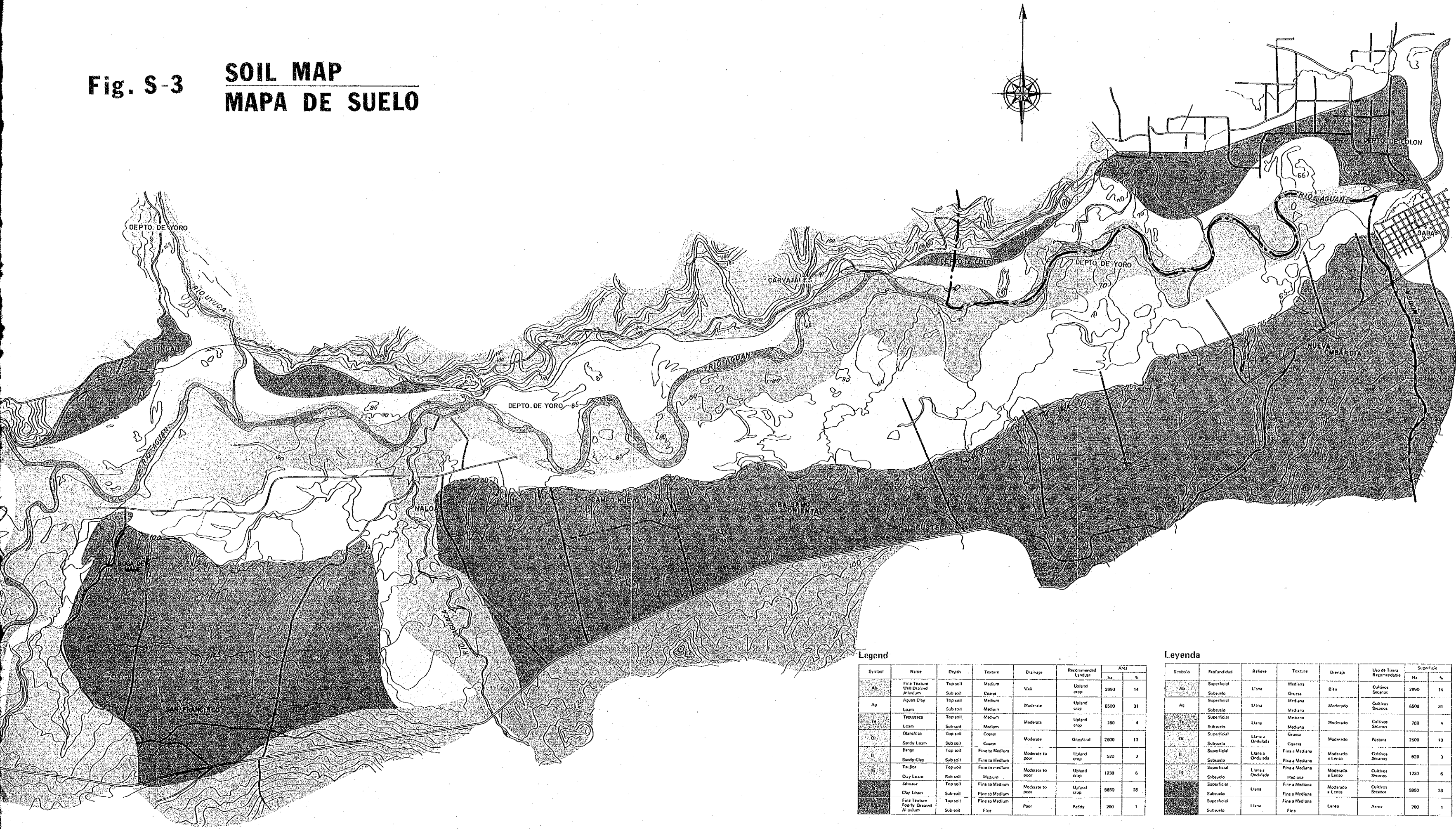


Fig. S-3

**SOIL MAP**  
**MAPA DE SUELO**



Legend

Symbol	Name	Depth	Texture	Drainage	Recommended Landuse	Area	
						ha	%
A <sub>1</sub>	Fine Texture Well Drained Alluvium	Top soil	Medium	Well	Upland crop	2990	14
		Sub soil	Coarse				
A <sub>2</sub>	Apans Clay	Top soil	Medium	Moderate	Upland crop	6500	31
		Sub soil	Medium				
B <sub>1</sub>	Topsoils	Top soil	Medium	Moderate	Upland crop	780	4
		Sub soil	Medium				
D <sub>1</sub>	Olanchia	Top soil	Coarse	Moderate	Grassland	2600	13
		Sub soil	Coarse				
E <sub>1</sub>	Sandy Loam	Top soil	Fine to Medium	Moderate to poor	Upland crop	520	3
		Sub soil	Fine to Medium				
E <sub>2</sub>	Sandy Clay	Top soil	Fine to Medium	Moderate to poor	Upland crop	1230	6
		Sub soil	Medium				
E <sub>3</sub>	Clay Loam	Top soil	Fine to Medium	Moderate to poor	Upland crop	6850	28
		Sub soil	Fine to Medium				
F <sub>1</sub>	Shales	Top soil	Fine to Medium	Poor	Pasture	200	1
		Sub soil	Fine				

Legenda

Simbolo	Profundidad	Relieve	Textura	Drenaje	Uso de Tierra Recomendable	Superficie	
						Ha	%
A <sub>1</sub>	Superficial	Llano	Mediana	Bien	Cultivos Secos	2990	14
	Subsuelo	Llano	Gruasa				
A <sub>2</sub>	Superficial	Llano	Mediana	Moderado	Cultivos Secos	6500	31
	Subsuelo	Llano	Mediana				
B <sub>1</sub>	Superficial	Llano	Mediana	Moderado	Cultivos Secos	780	4
	Subsuelo	Llano	Mediana				
D <sub>1</sub>	Superficial	Llano a Ondulado	Gruasa	Moderado	Pastura	2600	13
	Subsuelo	Llano a Ondulado	Gruasa				
E <sub>1</sub>	Superficial	Llano a Ondulado	Fina a Mediana	Moderado a Lento	Cultivos Secos	520	3
	Subsuelo	Llano a Ondulado	Fina a Mediana				
E <sub>2</sub>	Superficial	Llano a Ondulado	Fina a Mediana	Moderado a Lento	Cultivos Secos	1230	6
	Subsuelo	Llano a Ondulado	Mediana				
E <sub>3</sub>	Superficial	Llano	Fina a Mediana	Moderado a Lento	Cultivos Secos	6850	28
	Subsuelo	Llano	Fina a Mediana				
F <sub>1</sub>	Superficial	Llano	Fina	Lento	Arroz	200	1
	Subsuelo	Llano	Fina				