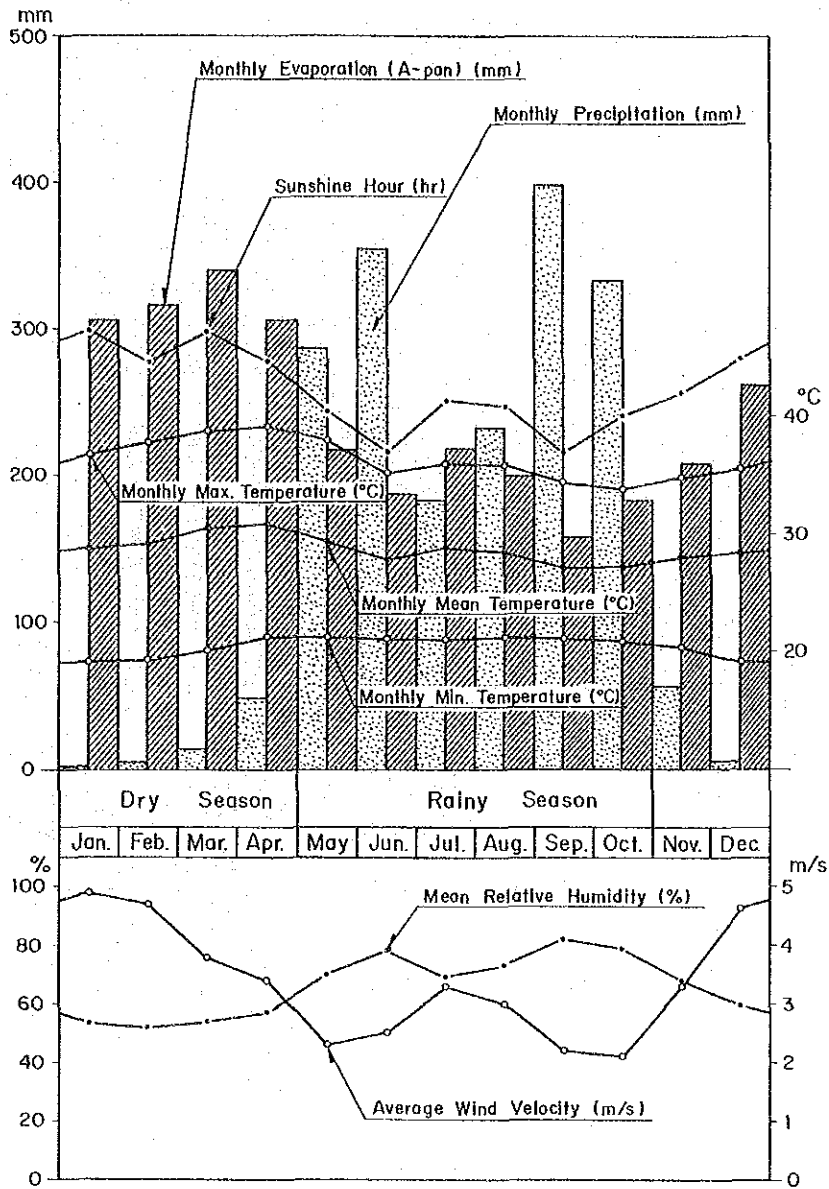


付 図



図 2 - 1 チョルテカ市における気候概要図

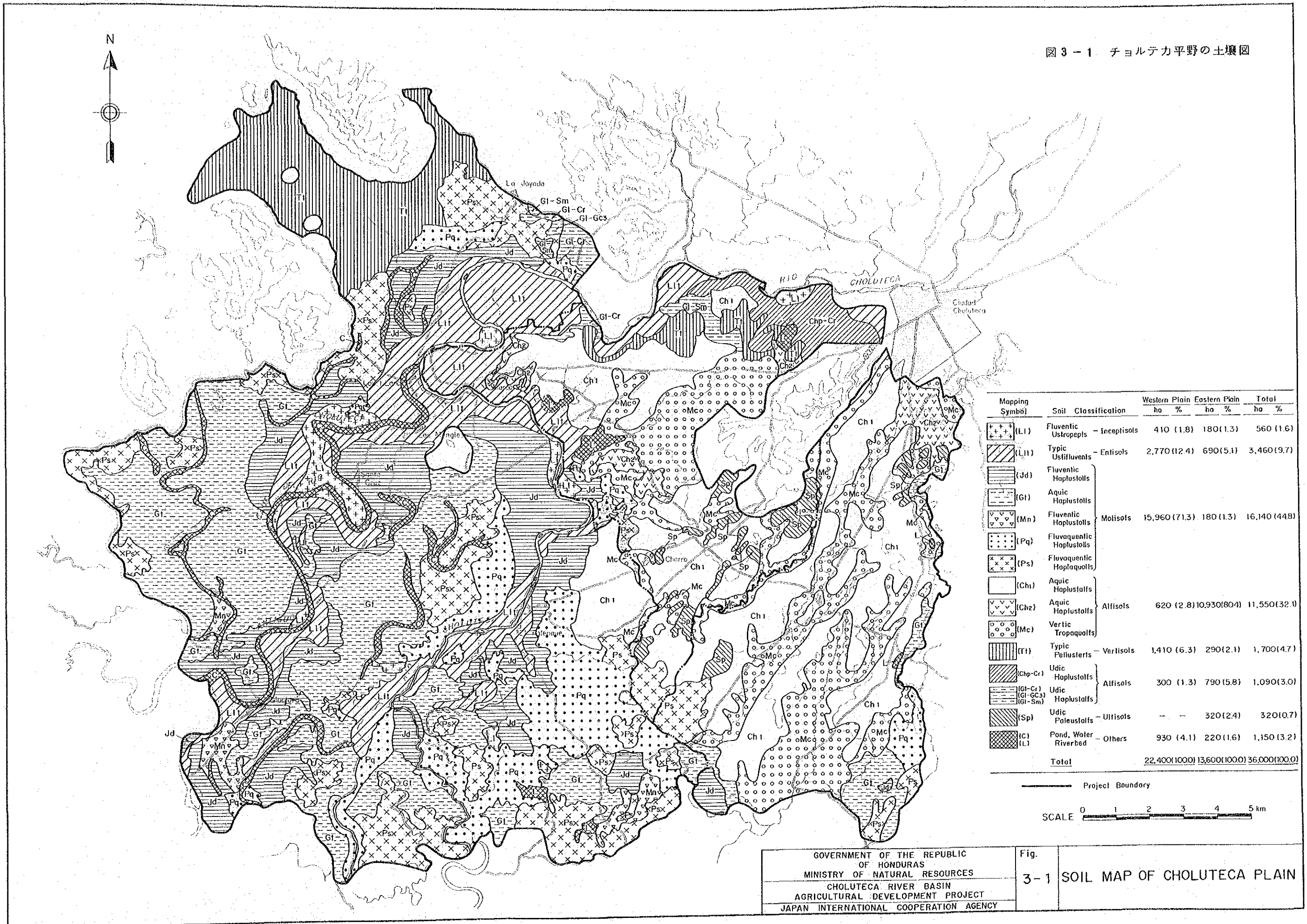


GOVERNMENT OF THE REPUBLIC  
OF HONDURAS  
MINISTRY OF NATURAL RESOURCES  
CHOLUTECA RIVER BASIN  
AGRICULTURAL DEVELOPMENT PROJECT  
JAPAN INTERNATIONAL COOPERATION AGENCY

Fig.  
2-1

CHARACTERISTICS OF CLIMATE  
AT CHOLUTECA

図 3-1 チョルテカ平野の土壤図



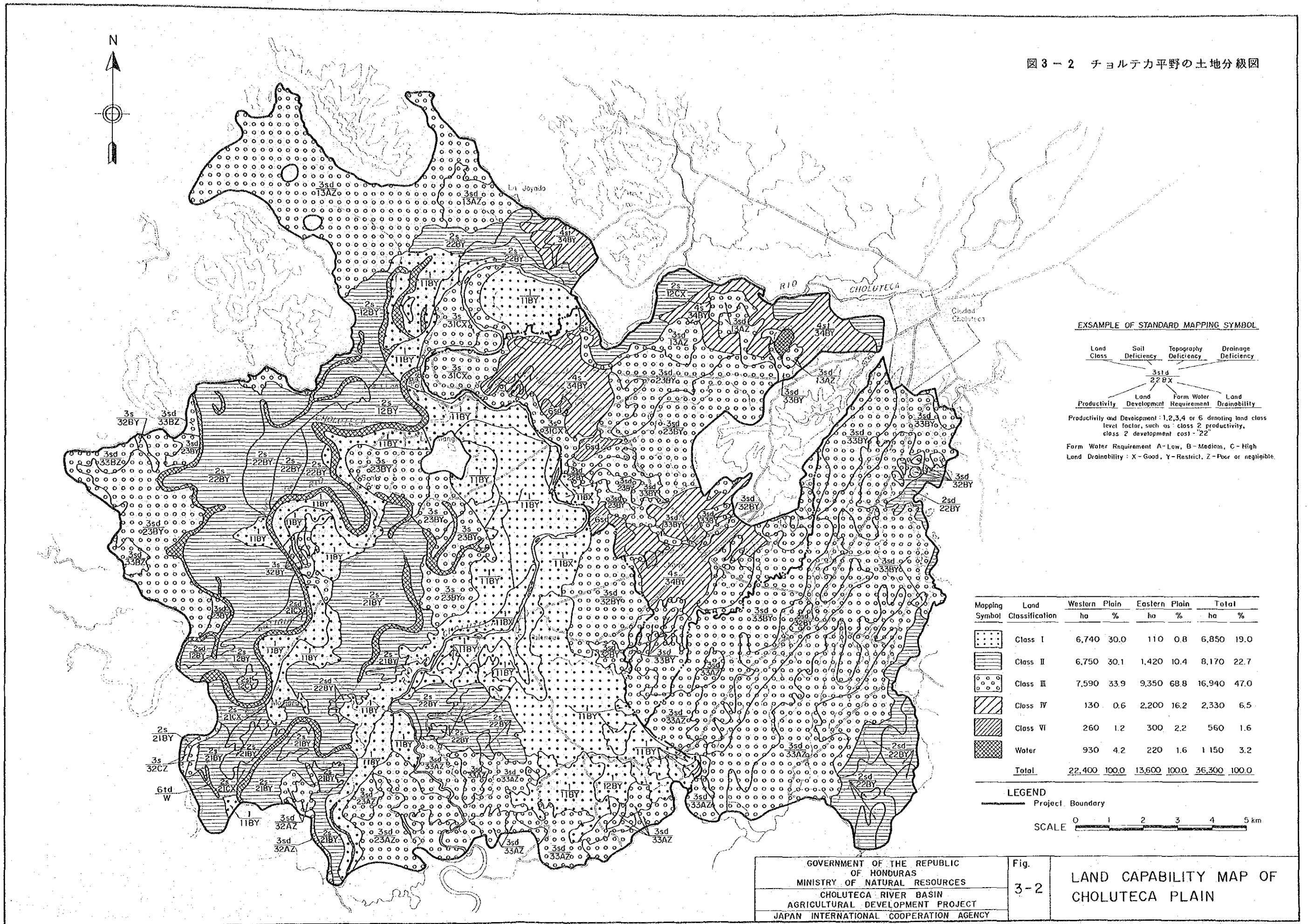
Mapping Symbol	Soil Classification	Western Plain ha %	Eastern Plain ha %	Total ha %
(L1)	Fluentic Ustropepts - Inceptisols	410 (1.8)	180 (1.3)	560 (1.6)
(L1)	Typic Ustifluvents - Entisols	2,770 (12.4)	690 (5.1)	3,460 (9.7)
(Jd)	Fluentic Haplustolls			
(G1)	Aquic Haplustolls			
(Mn)	Fluentic Haplustolls	15,960 (71.3)	180 (1.3)	16,140 (44.8)
(Pq)	Fluvaquentic Haplustolls			
(Ps)	Fluvaquentic Haplaquolls			
(Ch1)	Aquic Haplustalls			
(Ch2)	Aquic Haplustalls	620 (2.8)	10,930 (80.4)	11,550 (32.1)
(Mc)	Vertic Tropaquolls			
(T1)	Typic Pelusterts - Vertisols	1,410 (6.3)	290 (2.1)	1,700 (4.7)
(Chp-Cr)	Udic Haplustalls			
(G1-Cr)	Udic Haplustalls	300 (1.3)	790 (5.8)	1,090 (3.0)
(G1-GC3)	Udic Haplustalls			
(G1-Sm)	Udic Haplustalls			
(Sp)	Udic Paleustalls - Ultisols		320 (2.4)	320 (0.7)
(C)	Pond, Water	930 (4.1)	220 (1.6)	1,150 (3.2)
(L)	Riverbed			
<b>Total</b>		<b>22,400 (100.0)</b>	<b>13,600 (100.0)</b>	<b>36,000 (100.0)</b>

Project Boundary  
SCALE 0 1 2 3 4 5 km

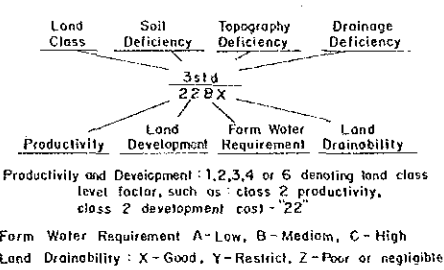
GOVERNMENT OF THE REPUBLIC OF HONDURAS  
MINISTRY OF NATURAL RESOURCES  
CHOLUTECA RIVER BASIN AGRICULTURAL DEVELOPMENT PROJECT  
JAPAN INTERNATIONAL COOPERATION AGENCY

Fig. 3-1 SOIL MAP OF CHOLUTECA PLAIN

図 3-2 チョルテカ平野の土地分級図



EXAMPLE OF STANDARD MAPPING SYMBOL



Mapping Symbol	Land Classification	Western Plain		Eastern Plain		Total	
		ha	%	ha	%	ha	%
	Class I	6,740	30.0	110	0.8	6,850	19.0
	Class II	6,750	30.1	1,420	10.4	8,170	22.7
	Class III	7,590	33.9	9,350	68.8	16,940	47.0
	Class IV	130	0.6	2,200	16.2	2,330	6.5
	Class VI	260	1.2	300	2.2	560	1.6
	Water	930	4.2	220	1.6	1,150	3.2
	<b>Total</b>	<b>22,400</b>	<b>100.0</b>	<b>13,600</b>	<b>100.0</b>	<b>36,300</b>	<b>100.0</b>

LEGEND

Project Boundary

SCALE 0 1 2 3 4 5 km

100

圖 4 - 1 計畫作付体系

— EASTERN PLAIN - A —

	Jan.	Feb.	Mar.	Apr.	May	Jun.	Jul.	Aug.	Sep.	Oct.	Nov.	Dec.
Paddy - Maize 1,150 ha	/											
Paddy - Beans 1,150 ha	/											
Cotton - Maize 1,150 ha	/											
Cotton - Beans 1,150 ha	/											

— EASTERN PLAIN - B —

	Jan.	Feb.	Mar.	Apr.	May	Jun.	Jul.	Aug.	Sep.	Oct.	Nov.	Dec.
Cotton - Maize 1,100 ha	/											
Cotton - Beans 1,100 ha	/											
Paddy - Maize 500 ha	/											
Paddy - Beans 500 ha	/											
Pasture 2,000 ha	Pasture											

— WESTERN PLAIN —

	Jan.	Feb.	Mar.	Apr.	May	Jun.	Jul.	Aug.	Sep.	Oct.	Nov.	Dec.
Sugar cane 5,980 ha	Plant Cane											
	1st Ratoon											
	2nd Ratoon											
	3rd Ratoon											
	4th Ratoon											
Paddy - Melon 2,000 ha	/											
Paddy - Vegetables 800 ha	/											
Paddy - Beans 1,000 ha	/											
Paddy - Sesame 250 ha	/											
Cotton - Maize 2,000 ha	/											
Cotton - Beans 1,830 ha	/											
Cotton - Vegetables 800 ha	/											
Cotton - Water melon 200 ha	/											
Pasture 140 ha	Pasture											

GOVERNMENT OF THE REPUBLIC  
OF HONDURAS  
MINISTRY OF NATURAL RESOURCES  
CHOLUTECA RIVER BASIN  
AGRICULTURAL DEVELOPMENT PROJECT  
JAPAN INTERNATIONAL COOPERATION AGENCY

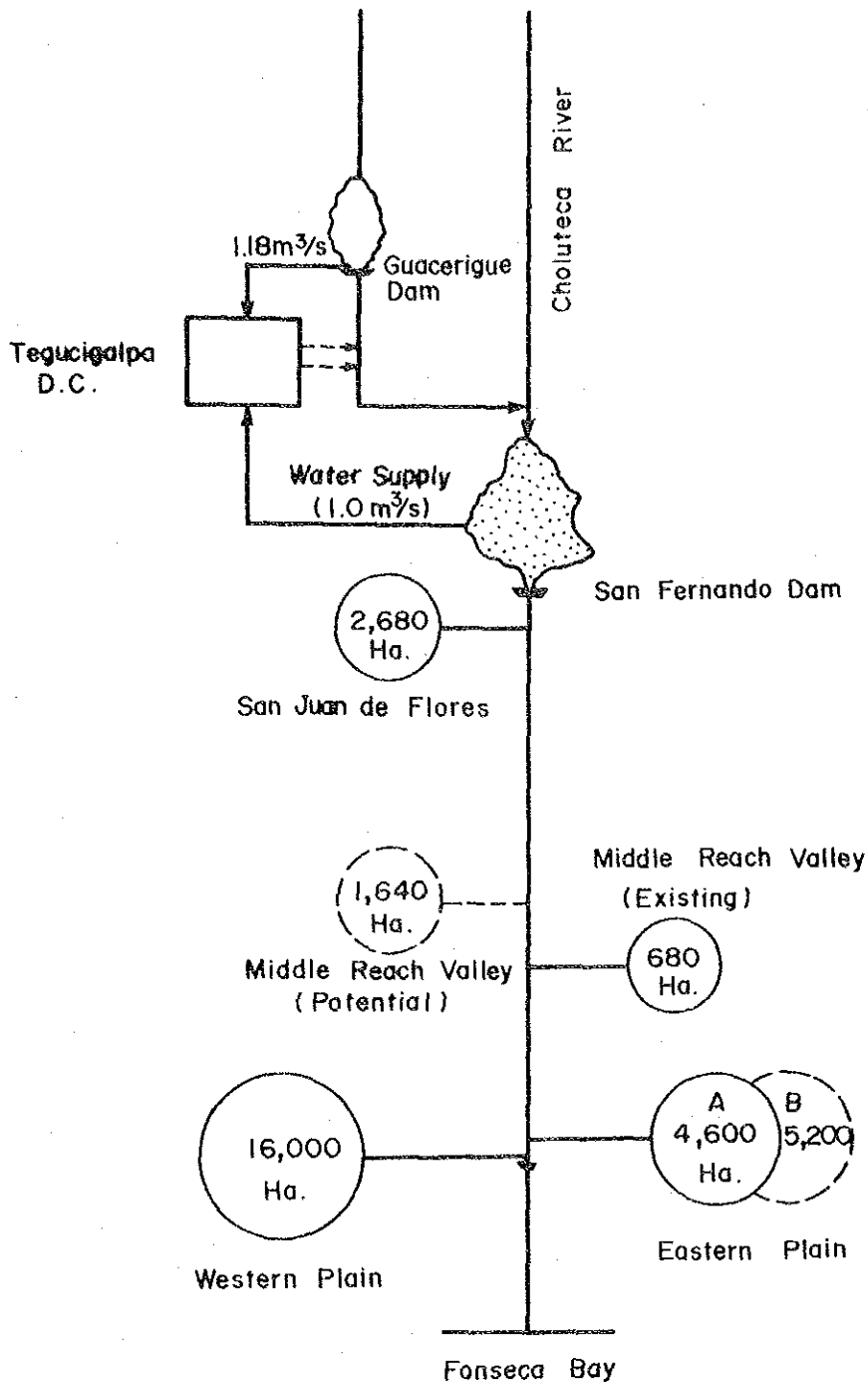
Fig.  
4-1

PROPOSED CROPPING PATTERN  
FOR CHOLUTECA PLAIN





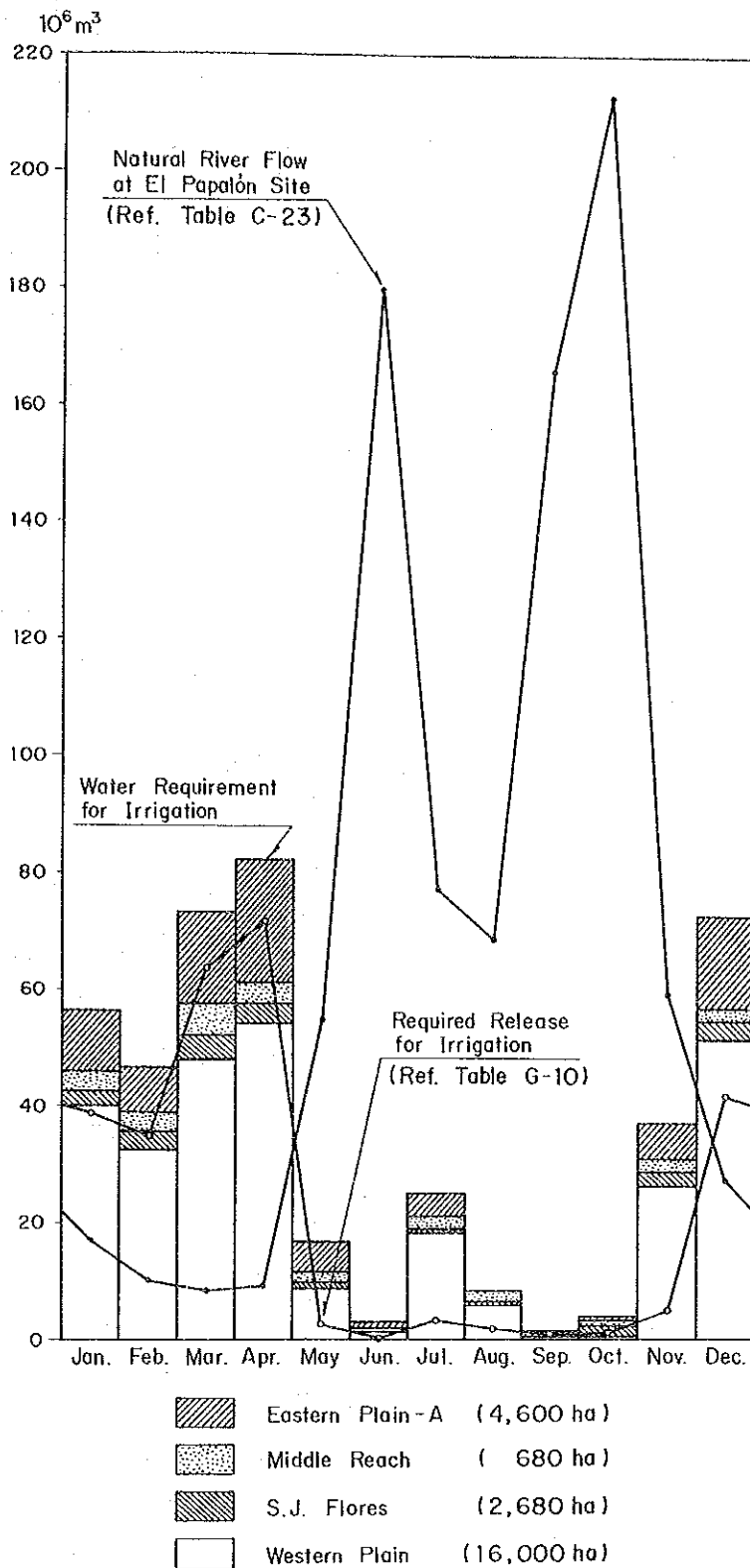
図 5 - 1 チョルテカ川流域水利用計画モデル



GOVERNMENT OF THE REPUBLIC OF HONDURAS MINISTRY OF NATURAL RESOURCES	Fig. 5-1	MODEL OF CHOLUTECA RIVER BASIN
CHOLUTECA RIVER BASIN AGRICULTURAL DEVELOPMENT PROJECT JAPAN INTERNATIONAL COOPERATION AGENCY		



図 5 - 2 かんがい用水量

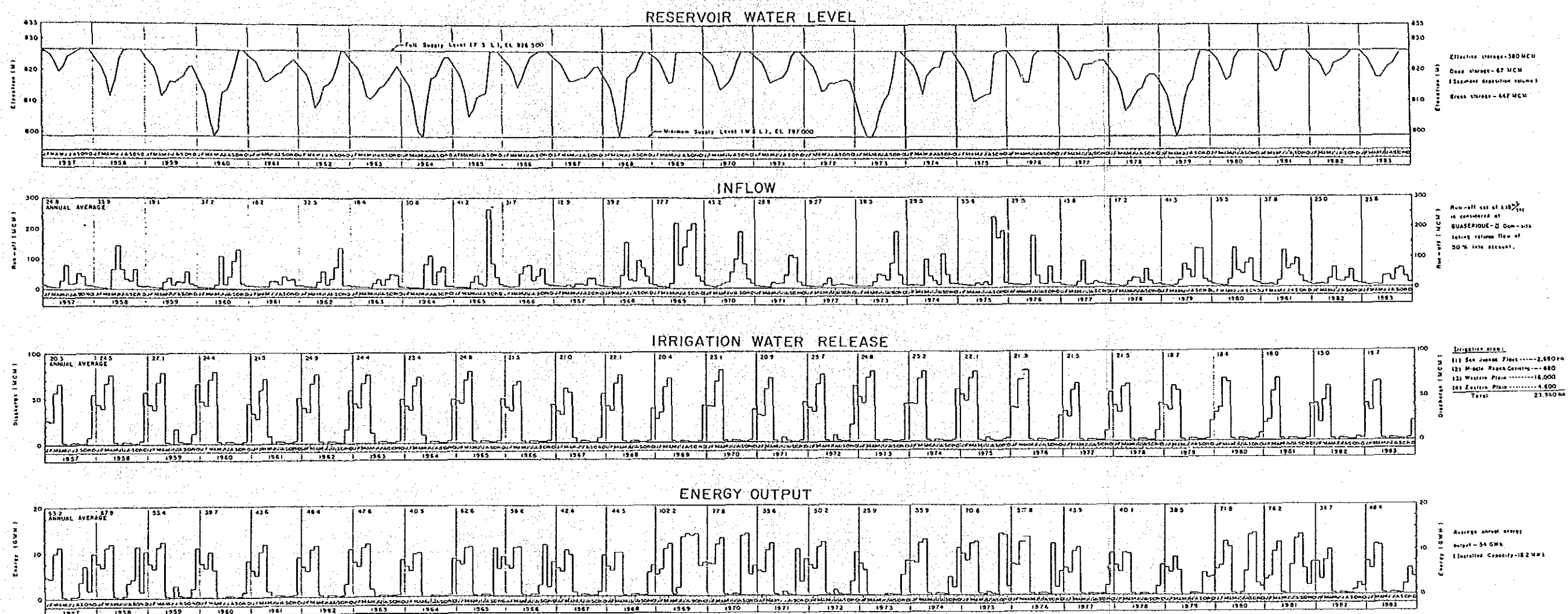


GOVERNMENT OF THE REPUBLIC  
OF HONDURAS  
MINISTRY OF NATURAL RESOURCES  
CHOLUTECA RIVER BASIN  
AGRICULTURAL DEVELOPMENT PROJECT  
JAPAN INTERNATIONAL COOPERATION AGENCY

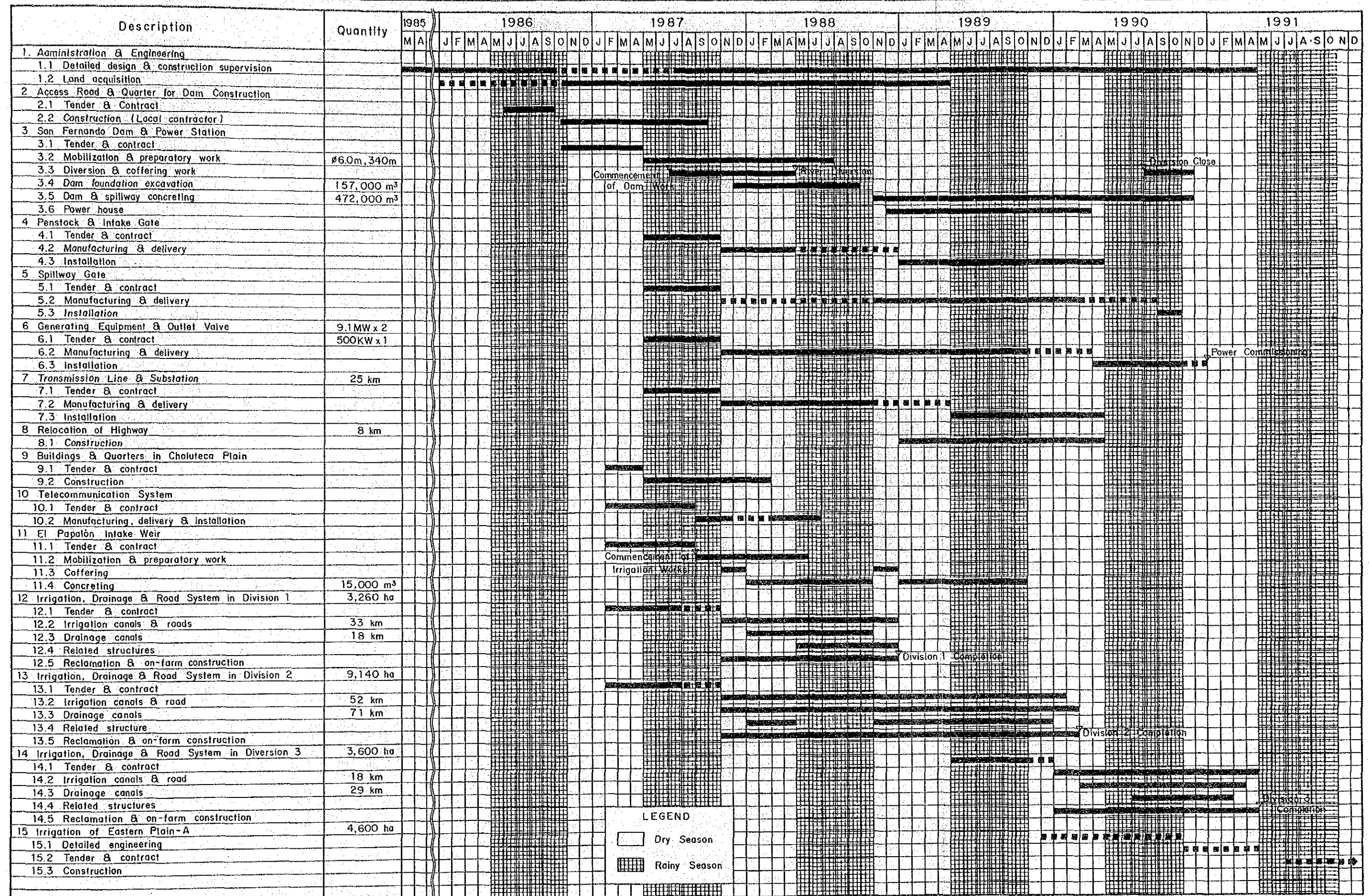
Fig.  
5-2

WATER REQUIREMENT FOR  
IRRIGATION

図 5-3 貯水池運用計画の検討



GOVERNMENT OF THE REPUBLIC OF HONDURAS MINISTRY OF NATURAL RESOURCES CHOLUTECA RIVER BASIN AGRICULTURAL DEVELOPMENT PROJECT JAPAN INTERNATIONAL COOPERATION AGENCY	Fig.	RESULT OF RESERVOIR OPERATION (Case 2-2)
	5-3	



LEGEND  
 [White box] Dry Season  
 [Hatched box] Rainy Season

CONSTRUCTION SCHEDULE OF THE PROJECT

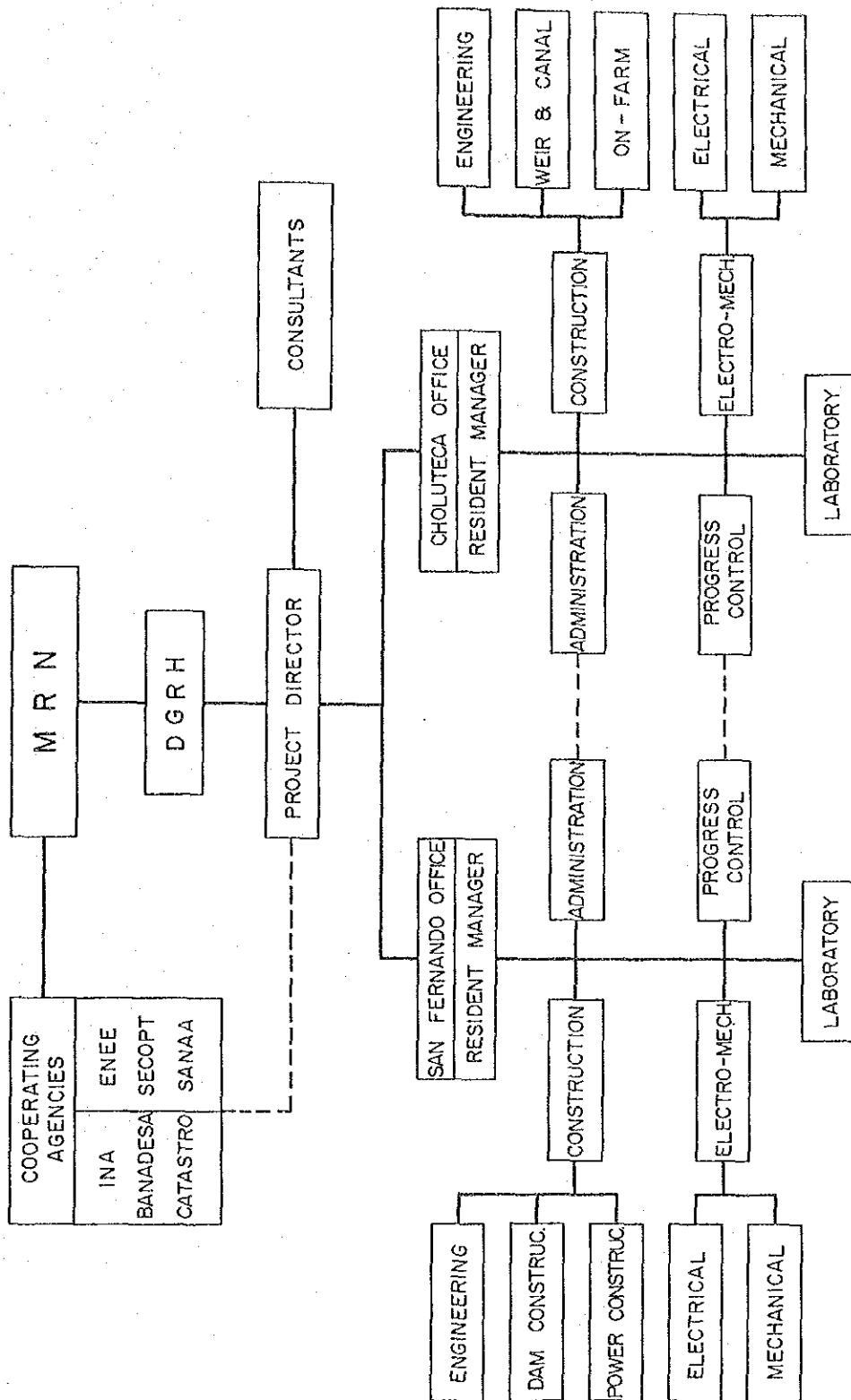
GOVERNMENT OF THE REPUBLIC OF HONDURAS  
 MINISTRY OF NATURAL RESOURCES  
 CHOLUTECA RIVER BASIN  
 AGRICULTURAL DEVELOPMENT PROJECT  
 JAPAN INTERNATIONAL COOPERATION AGENCY

Fig. 7-1

CONSTRUCTION SCHEDULE OF THE PROJECT

[The page contains extremely faint and illegible text, likely due to low contrast or scanning quality. The text is arranged in a vertical column on the left side of the page.]

图 7 - 2 事業実施組織図



GOVERNMENT OF THE REPUBLIC  
OF HONDURAS  
MINISTRY OF NATURAL RESOURCES  
CHOLUTECA RIVER BASIN  
AGRICULTURAL DEVELOPMENT PROJECT  
JAPAN INTERNATIONAL COOPERATION AGENCY

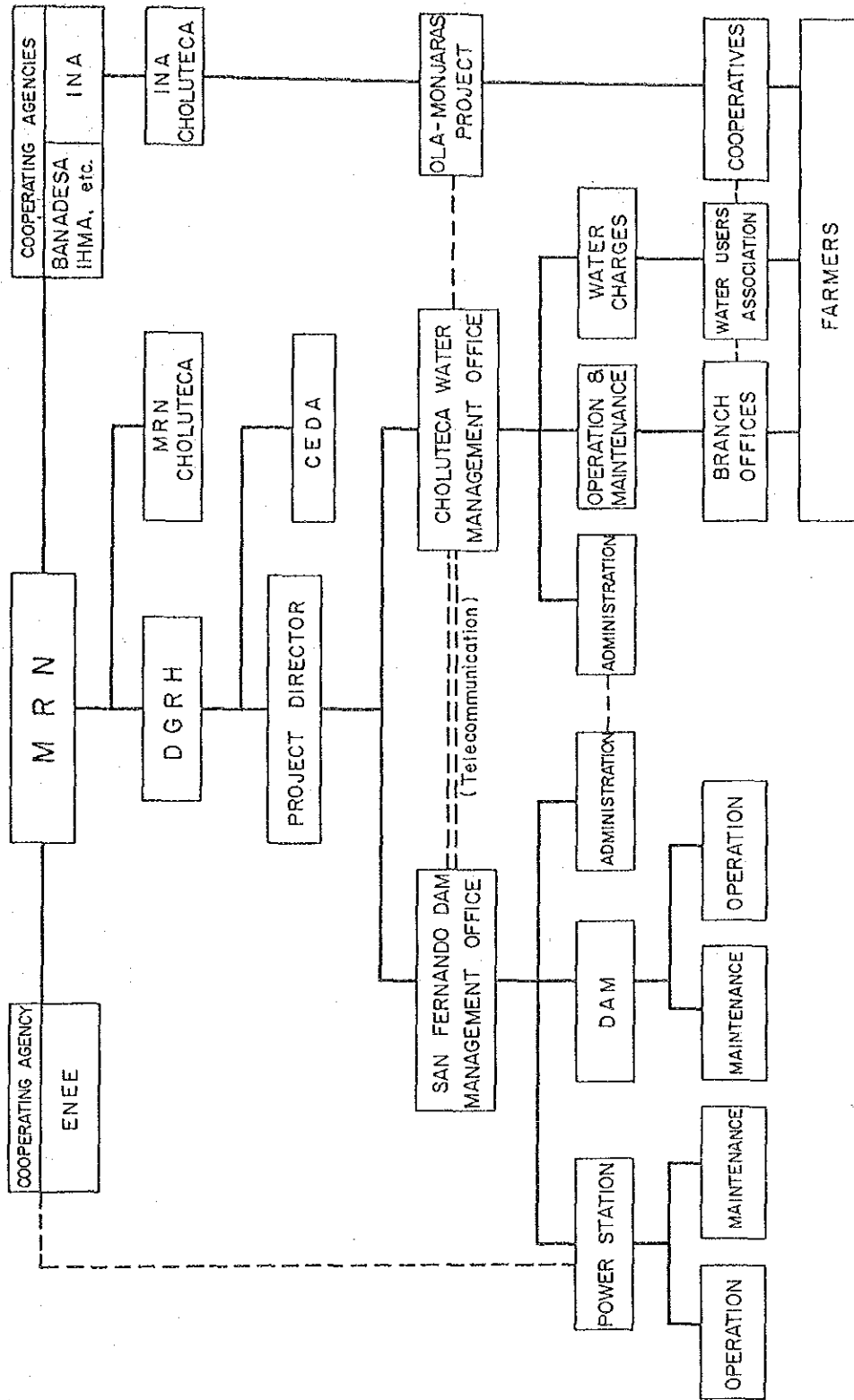
Fig.  
7-2

ORGANIZATION DURING  
CONSTRUCTION





图 7 - 3 新築維持設備組織圖



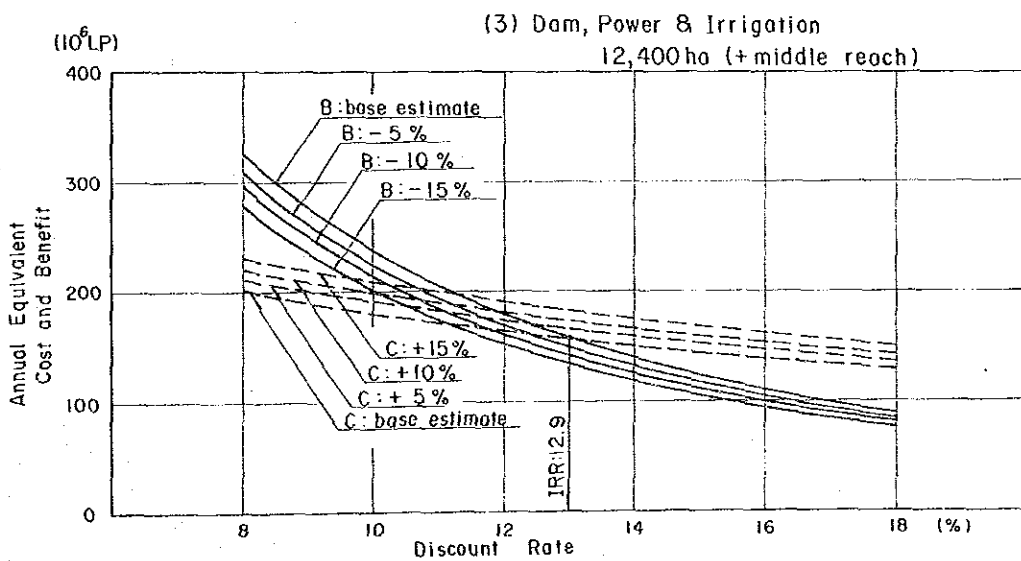
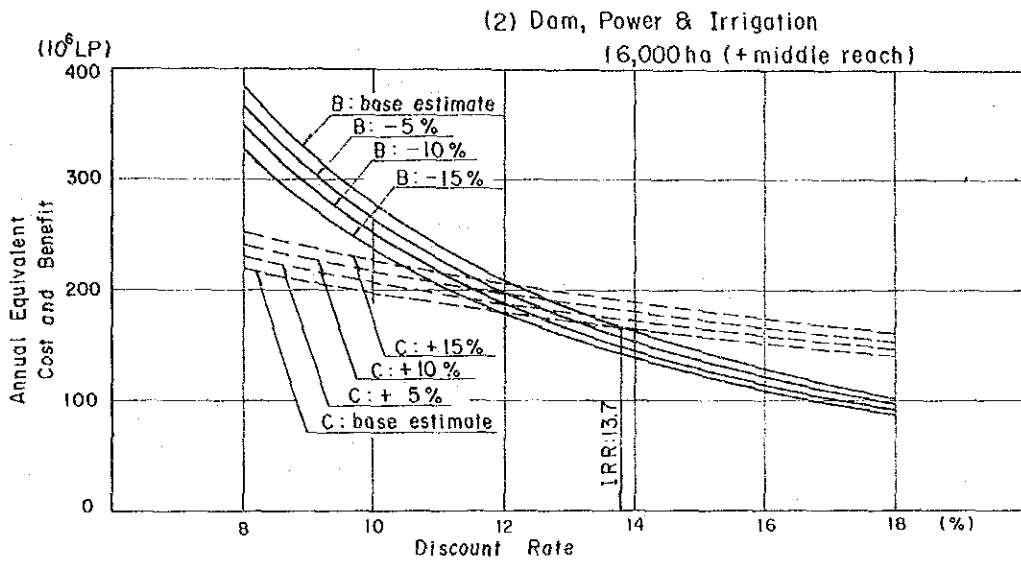
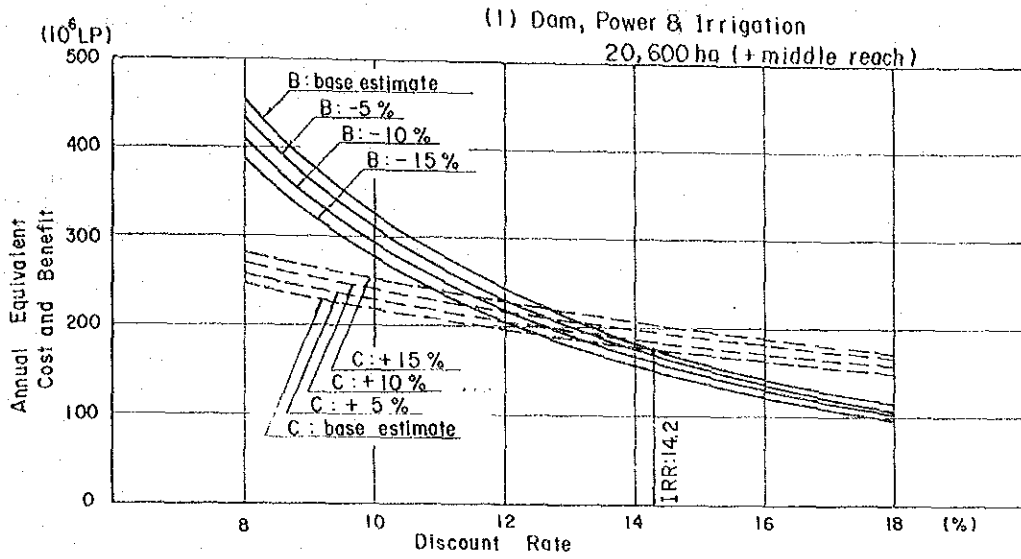
GOVERNMENT OF THE REPUBLIC OF HONDURAS  
 MINISTRY OF NATURAL RESOURCES  
 CHOLUTECA RIVER BASIN  
 AGRICULTURAL DEVELOPMENT PROJECT  
 JAPAN INTERNATIONAL COOPERATION AGENCY

Fig. 7-3

ORGANIZATION FOR OPERATION



図 10-1 内部収益率の感度分析



GOVERNMENT OF THE REPUBLIC  
OF HONDURAS  
MINISTRY OF NATURAL RESOURCES  
CHOLUTECA RIVER BASIN  
AGRICULTURAL DEVELOPMENT PROJECT  
JAPAN INTERNATIONAL COOPERATION AGENCY

Fig.

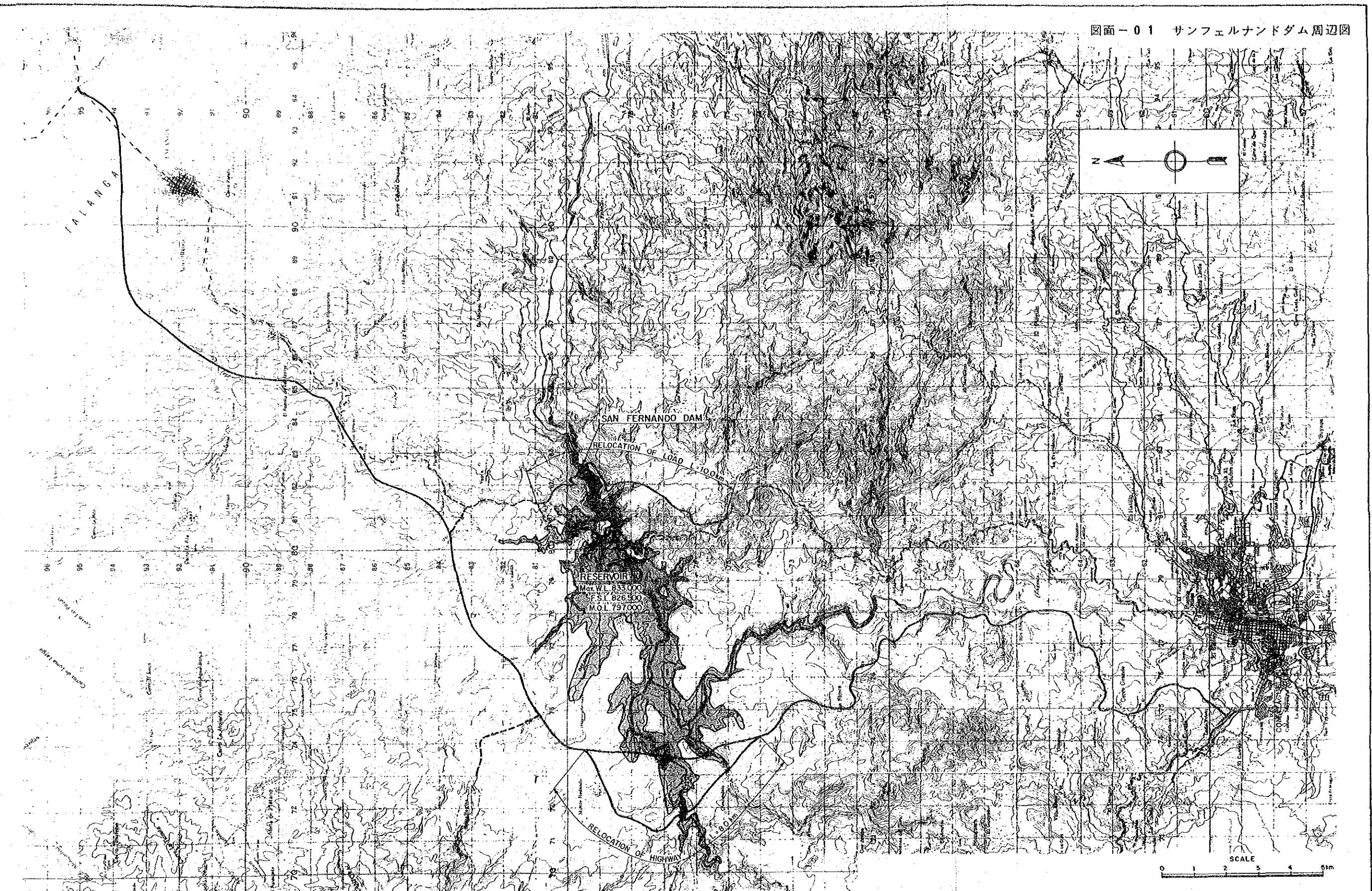
10-1

SENSITIVITY ANALYSIS OF EIRR



添付図面

図面-01 サンフェルナンドダム周辺図

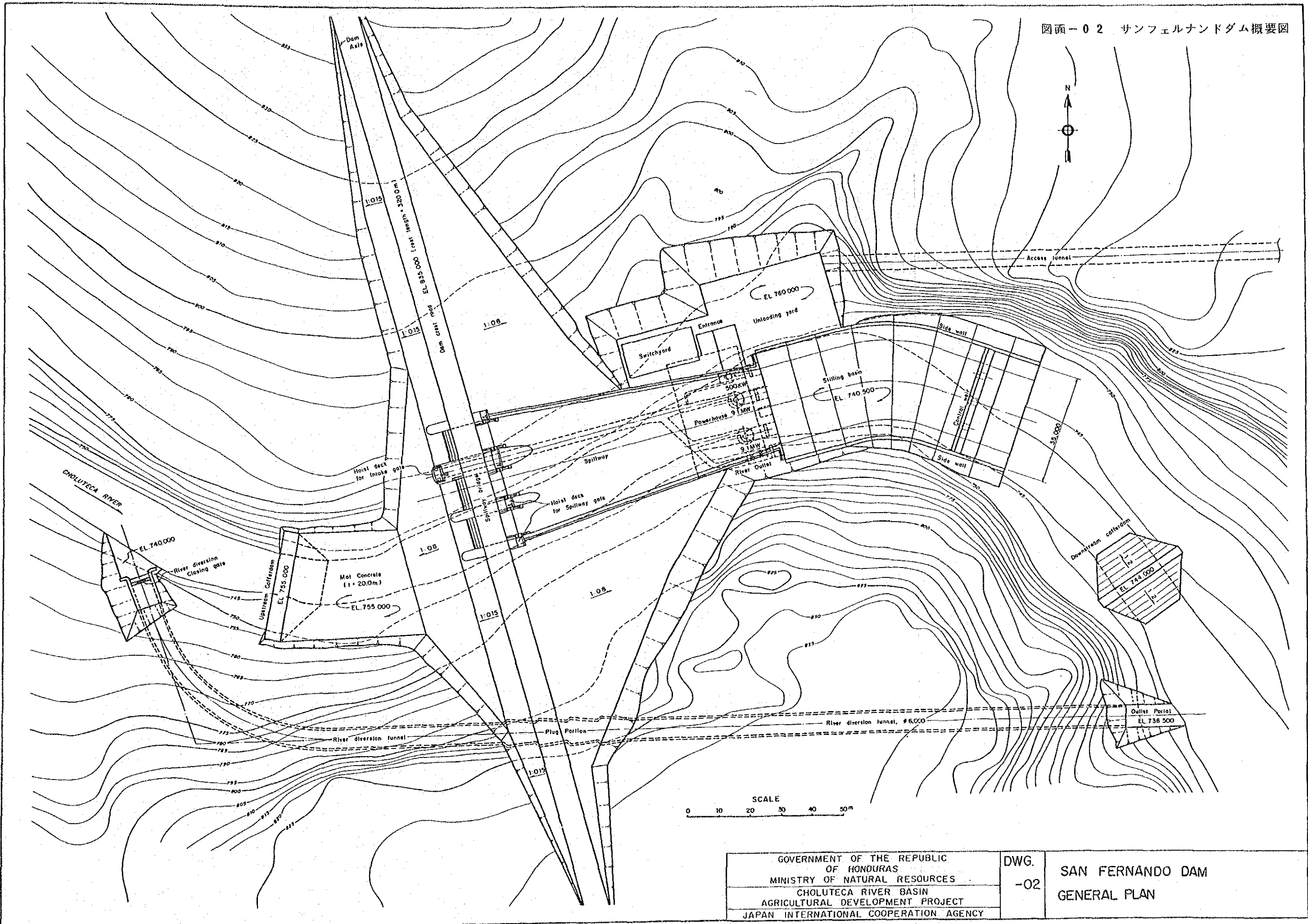


GOVERNMENT OF THE REPUBLIC  
OF HONDURAS  
MINISTRY OF NATURAL RESOURCES  
CHOLUTECA RIVER BASIN  
AGRICULTURAL DEVELOPMENT PROJECT  
JAPAN INTERNATIONAL COOPERATION AGENCY

DWG.  
-01

SAN FERNANDO DAM  
VICINITY MAP

図面-02 サンフェルナンドダム概要図

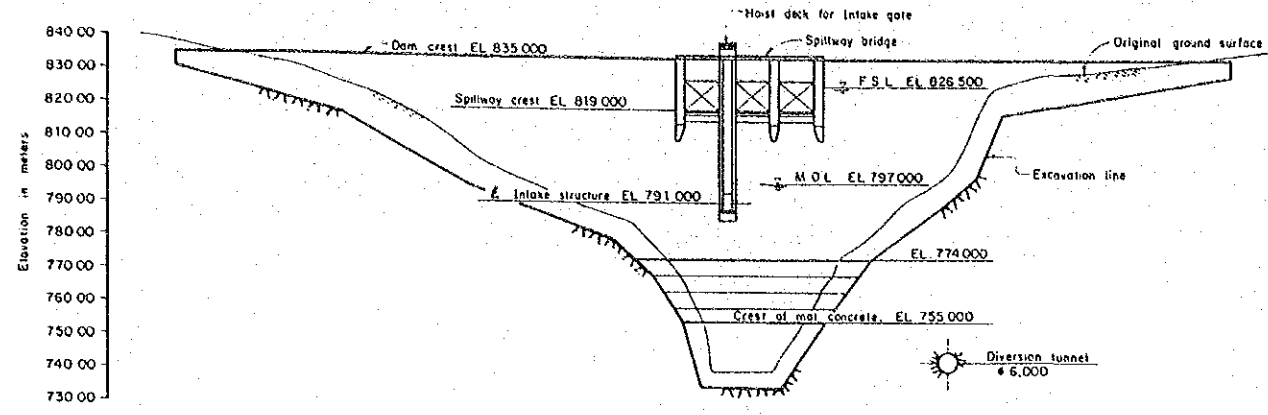


SCALE  
0 10 20 30 40 50m

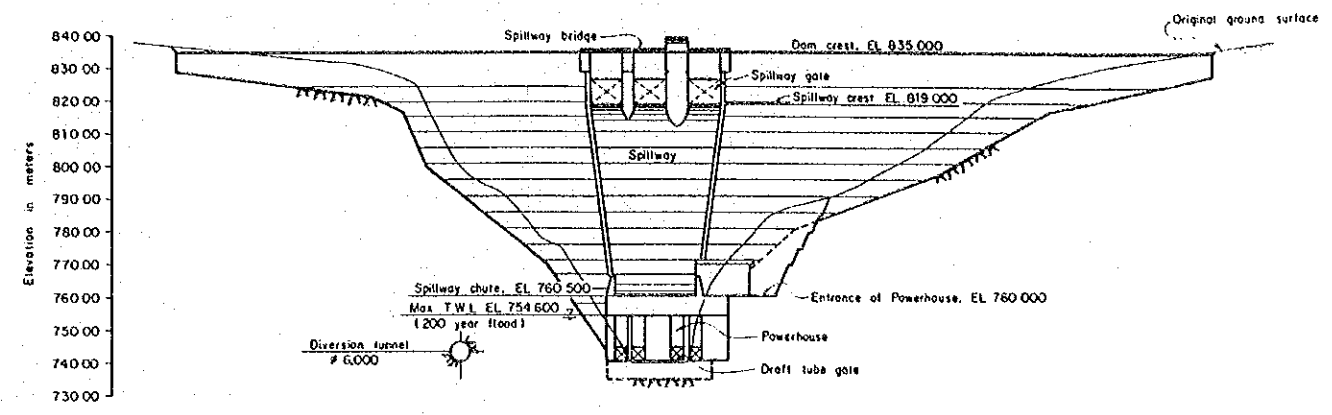
GOVERNMENT OF THE REPUBLIC  
OF HONDURAS  
MINISTRY OF NATURAL RESOURCES  
CHOLUTECA RIVER BASIN  
AGRICULTURAL DEVELOPMENT PROJECT  
JAPAN INTERNATIONAL COOPERATION AGENCY

DWG.  
-02

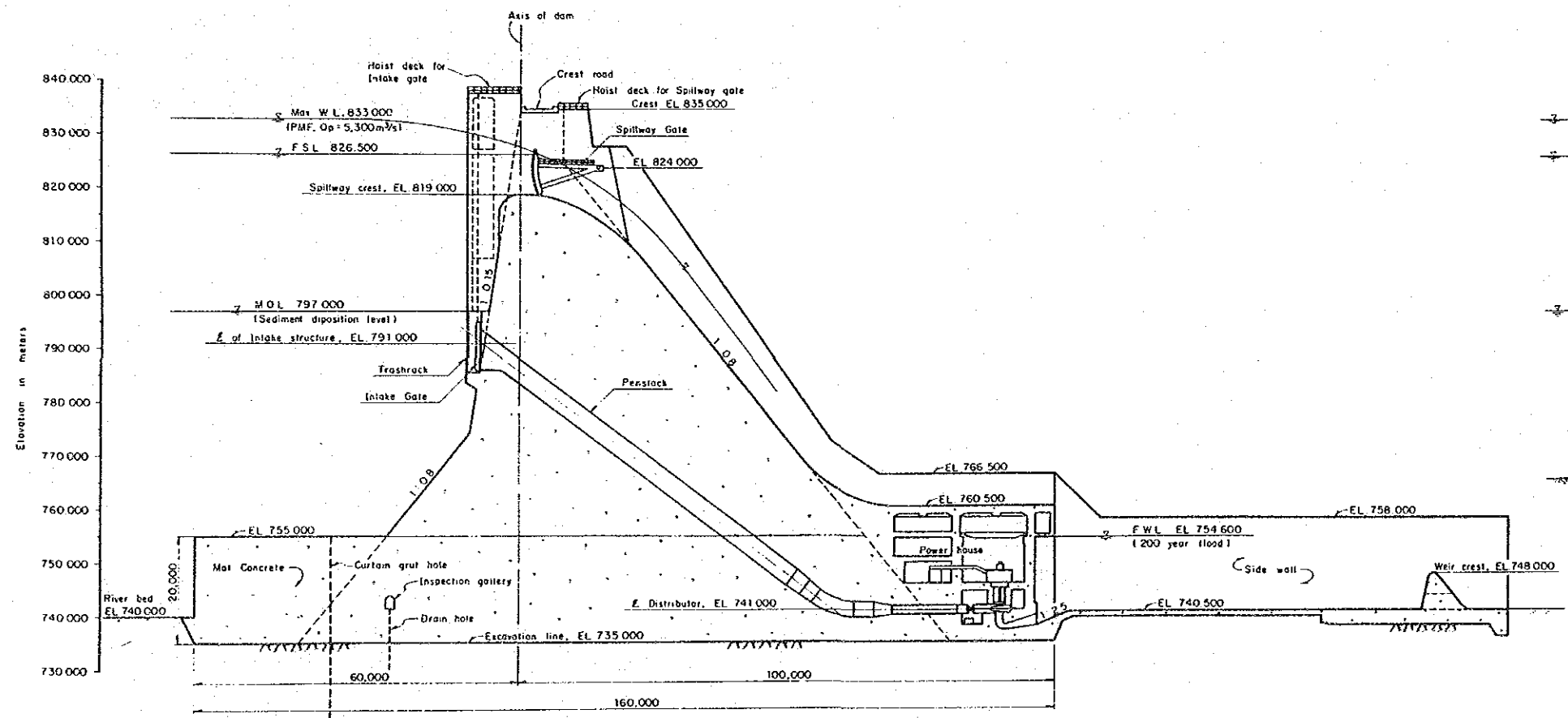
SAN FERNANDO DAM  
GENERAL PLAN



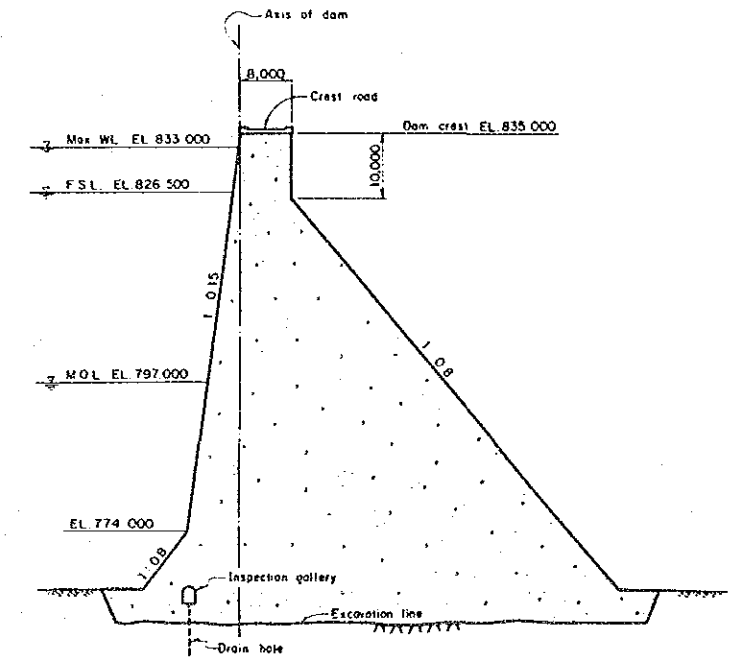
UPSTREAM ELEVATION SCALE A



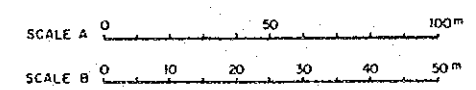
DOWNSTREAM ELEVATION SCALE A



TYPICAL SECTION OF OVERFLOW PORTION SCALE B

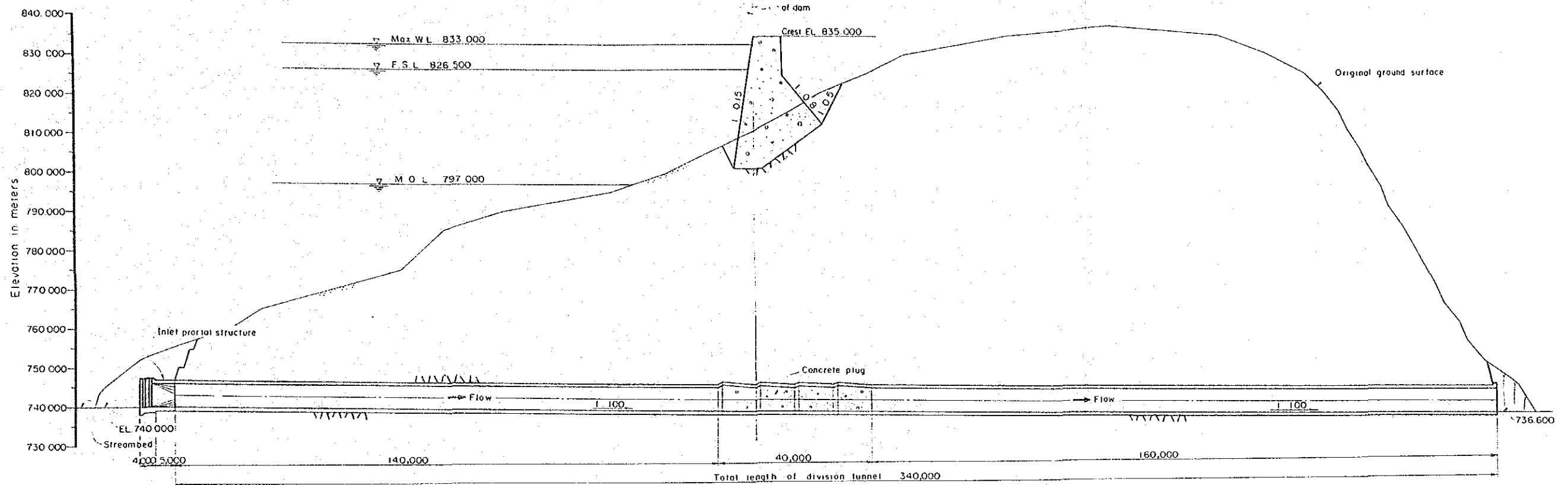


TYPICAL SECTION OF NONOVERFLOW PORTION SCALE B

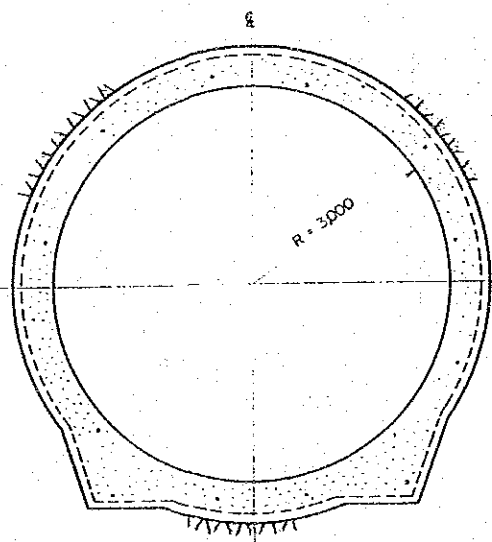


GOVERNMENT OF THE REPUBLIC OF HONDURAS MINISTRY OF NATURAL RESOURCES CHOLUTECA RIVER BASIN AGRICULTURAL DEVELOPMENT PROJECT JAPAN INTERNATIONAL COOPERATION AGENCY	DWG.	SAN FERNANDO DAM ELEVATIONS AND SECTIONS
	-03	

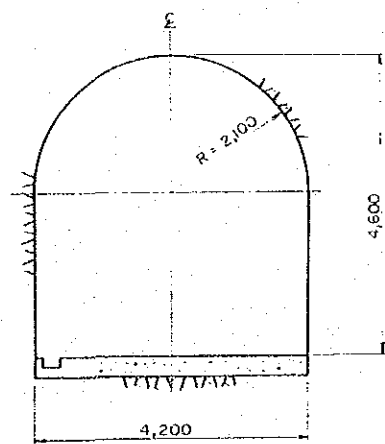




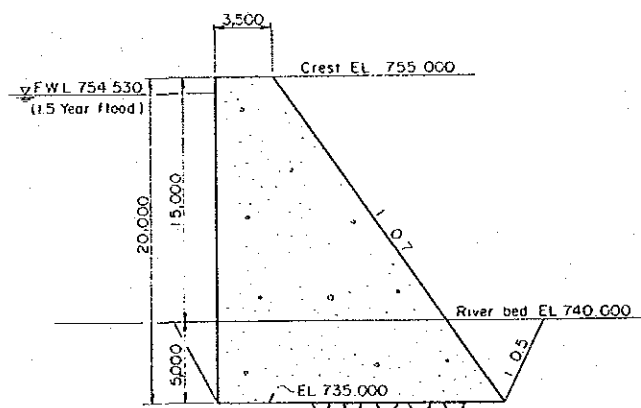
PROFILE ALONG  $\Sigma$  DIVERSION TUNNEL SCALE A



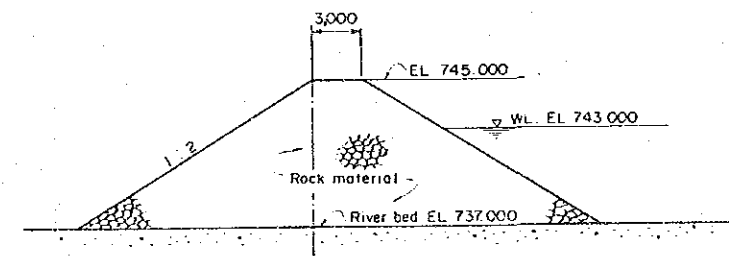
TYPICAL SECTION OF DIVERSION TUNNEL SCALE B



TYPICAL SECTION OF ACCESS ROAD TO POWER HOUSE SCALE B

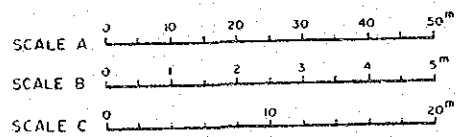


UPSTREAM COFFERDAM



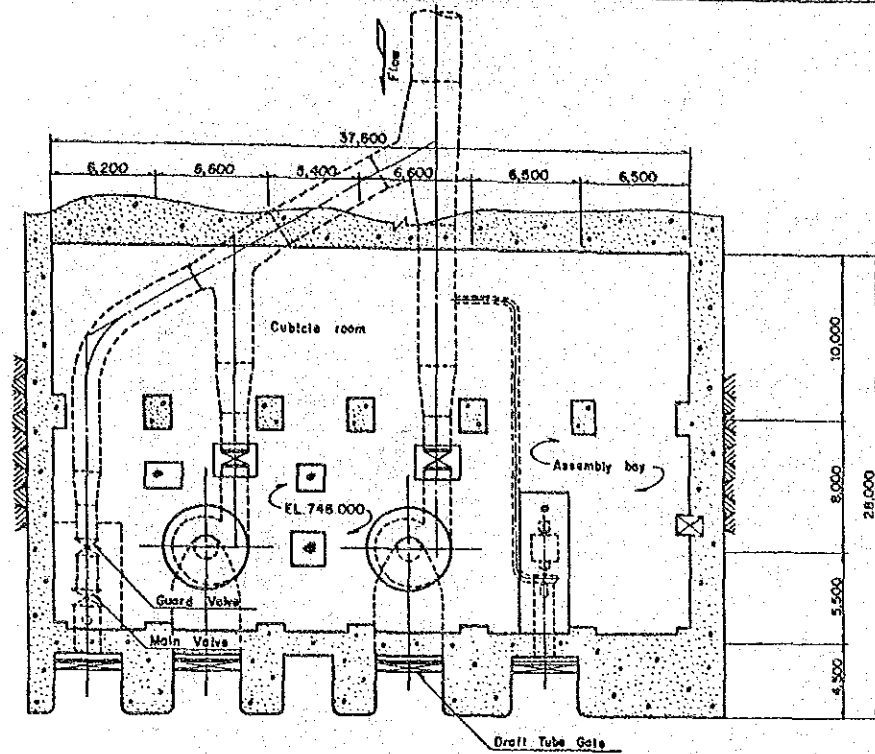
DOWNSTREAM COFFERDAM

TYPICAL SECTION OF COFFERDAMS SCALE C

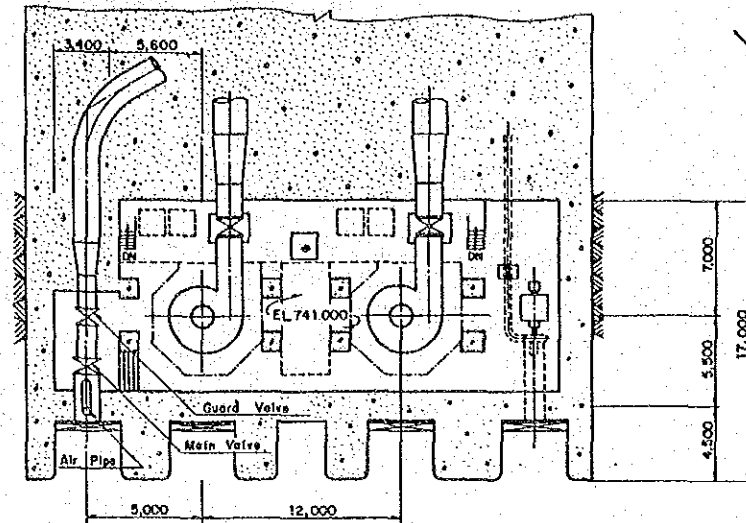


GOVERNMENT OF THE REPUBLIC OF HONDURAS MINISTRY OF NATURAL RESOURCES	DWG.	SAN FERNANDO DAM PROFILE AND SECTIONS
CHOLUTECA RIVER BASIN AGRICULTURAL DEVELOPMENT PROJECT	-04	
JAPAN INTERNATIONAL COOPERATION AGENCY		

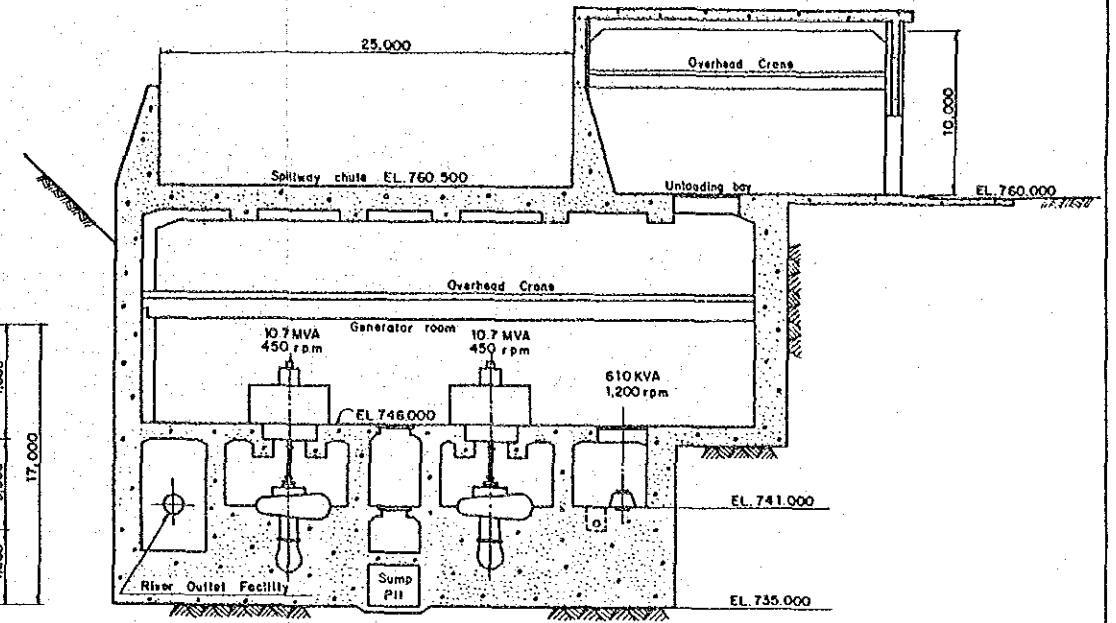
図面-05 サンフェルナンドダムにおける発電所  
および短線結線図



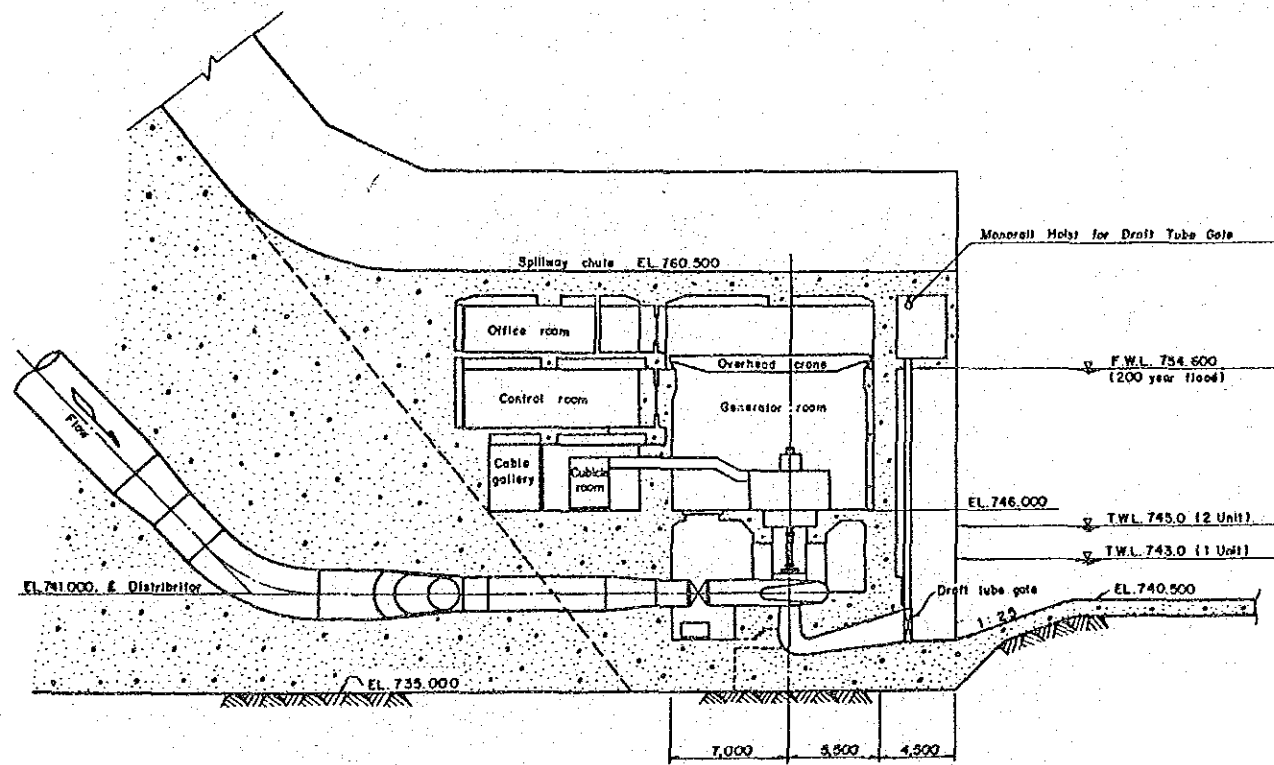
GENERATOR FLOOR PLAN (EL.746.000) SCALE A



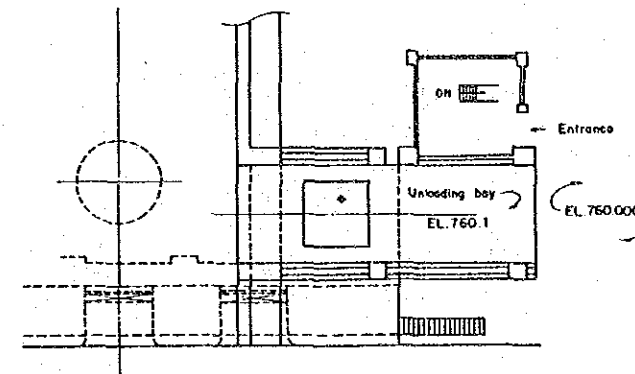
TURBINE FLOOR PLAN (EL.741.000) SCALE A



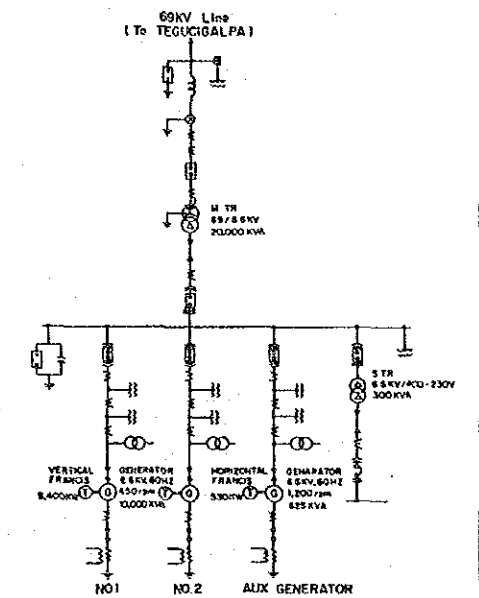
LONGITUDINAL SECTION SCALE A



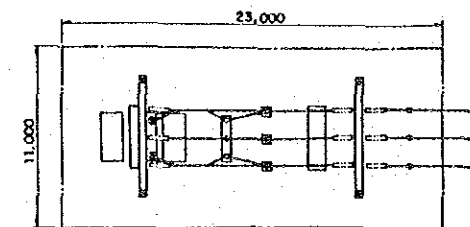
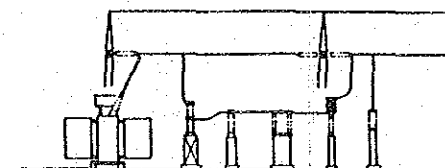
TRANSVERSE SECTION SCALE A



PLAN OF ENTRANCE & UNLOADING BAY SCALE A



SINGLE LINE DIAGRAM NO SCALE



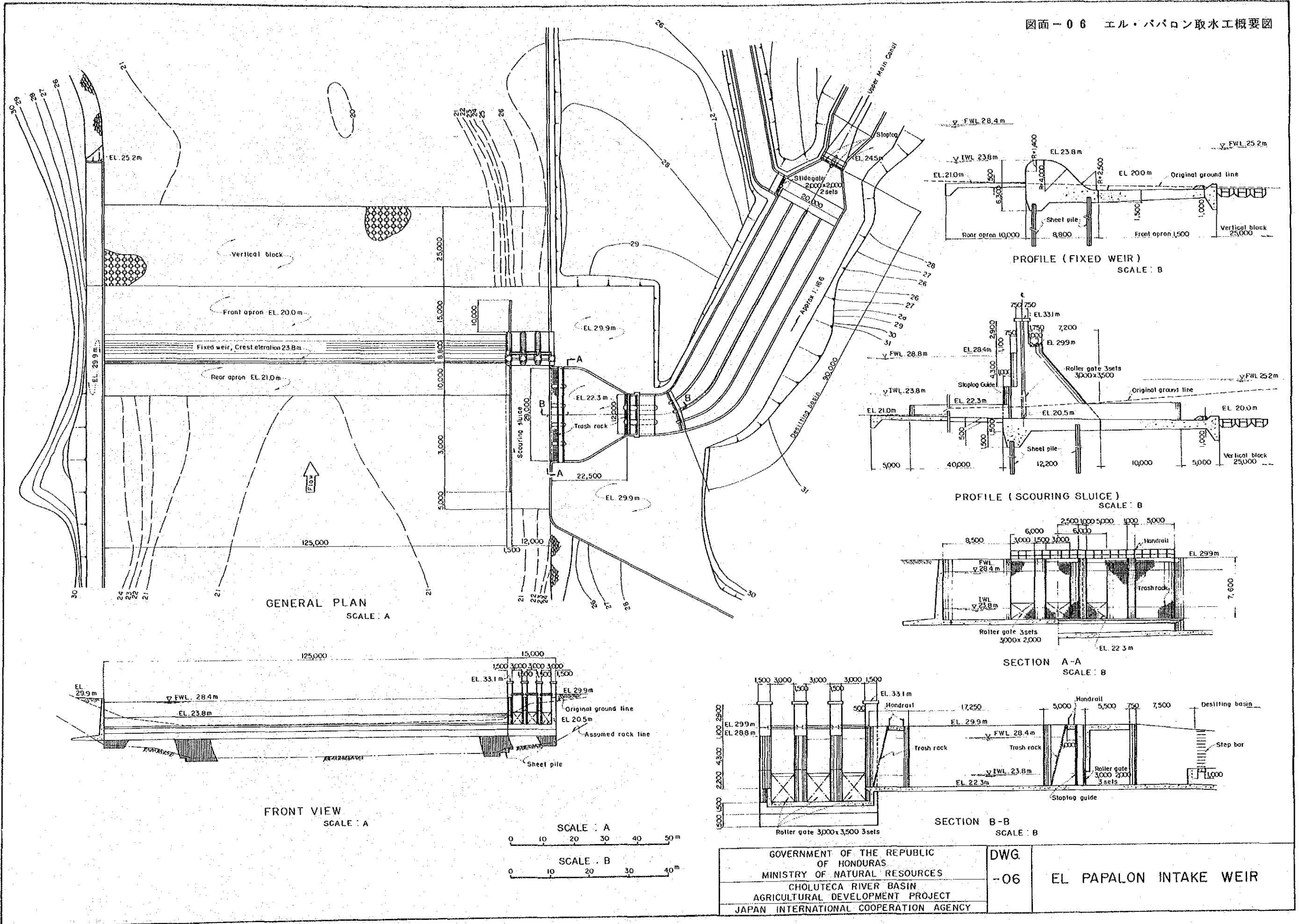
SWITCHYARD SCALE A

SCALE A 0 10 20

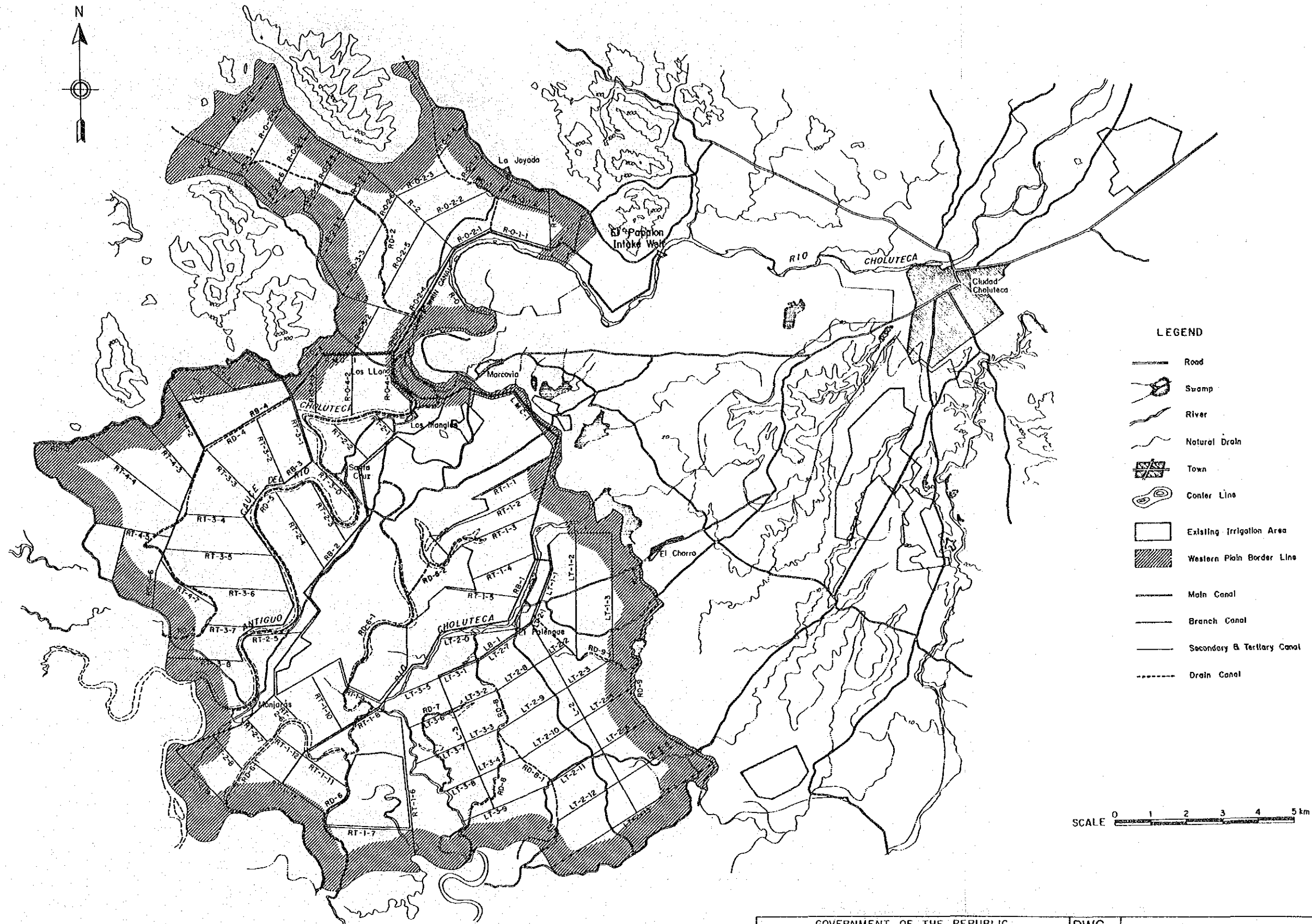
GOVERNMENT OF THE REPUBLIC  
OF HONDURAS  
MINISTRY OF NATURAL RESOURCES  
CHOLUTECA RIVER BASIN  
AGRICULTURAL DEVELOPMENT PROJECT  
JAPAN INTERNATIONAL COOPERATION AGENCY

DWG  
-05

SAN FERNANDO POWERHOUSE  
AND SINGLE LINE DIAGRAM



GOVERNMENT OF THE REPUBLIC OF HONDURAS MINISTRY OF NATURAL RESOURCES CHOLUTECA RIVER BASIN AGRICULTURAL DEVELOPMENT PROJECT JAPAN INTERNATIONAL COOPERATION AGENCY		DWG. -06	EL PAPALON INTAKE WEIR
---	--	-------------	------------------------



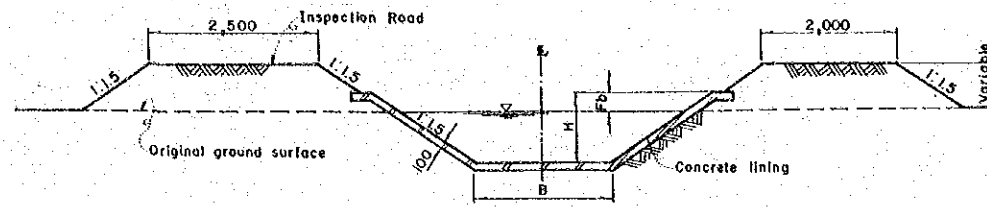
LEGEND

- Road
- Swamp
- River
- Natural Drain
- Town
- Center Line
- Existing Irrigation Area
- Western Plain Border Line
- Main Canal
- Branch Canal
- Secondary & Tertiary Canal
- Drain Canal

SCALE 0 1 2 3 4 5 km

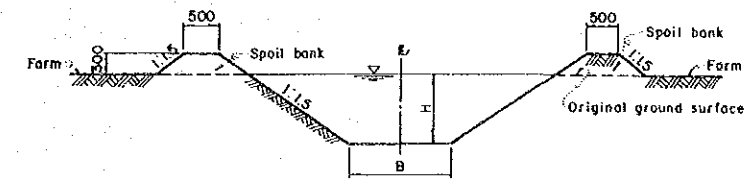
GOVERNMENT OF THE REPUBLIC OF HONDURAS MINISTRY OF NATURAL RESOURCES	DWG. -07	LAYOUT IN WESTERN PLAIN AREA
CHOLUTECA RIVER BASIN AGRICULTURAL DEVELOPMENT PROJECT JAPAN INTERNATIONAL COOPERATION AGENCY		

TYPICAL SECTION OF IRRIGATION CANAL

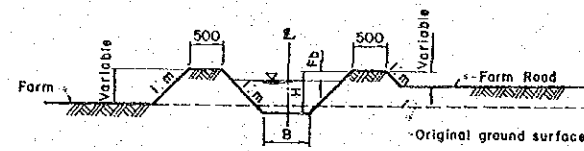


MAIN CANAL & BRANCH CANAL

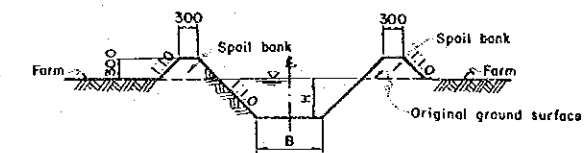
TYPICAL SECTION OF DRAINAGE CANAL



MAIN DRAIN & SECONDARY DRAIN

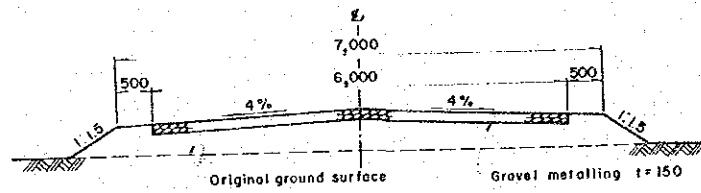


SECONDARY & TERTIARY CANAL

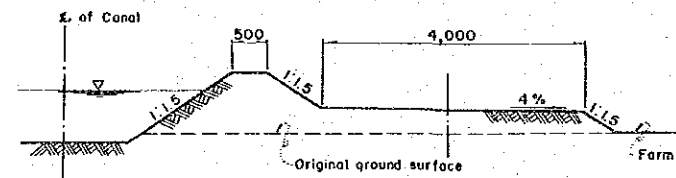


COLECTOR & FIELD DRAIN

FARM ROAD



MAIN FARM ROAD & LINKED ROAD



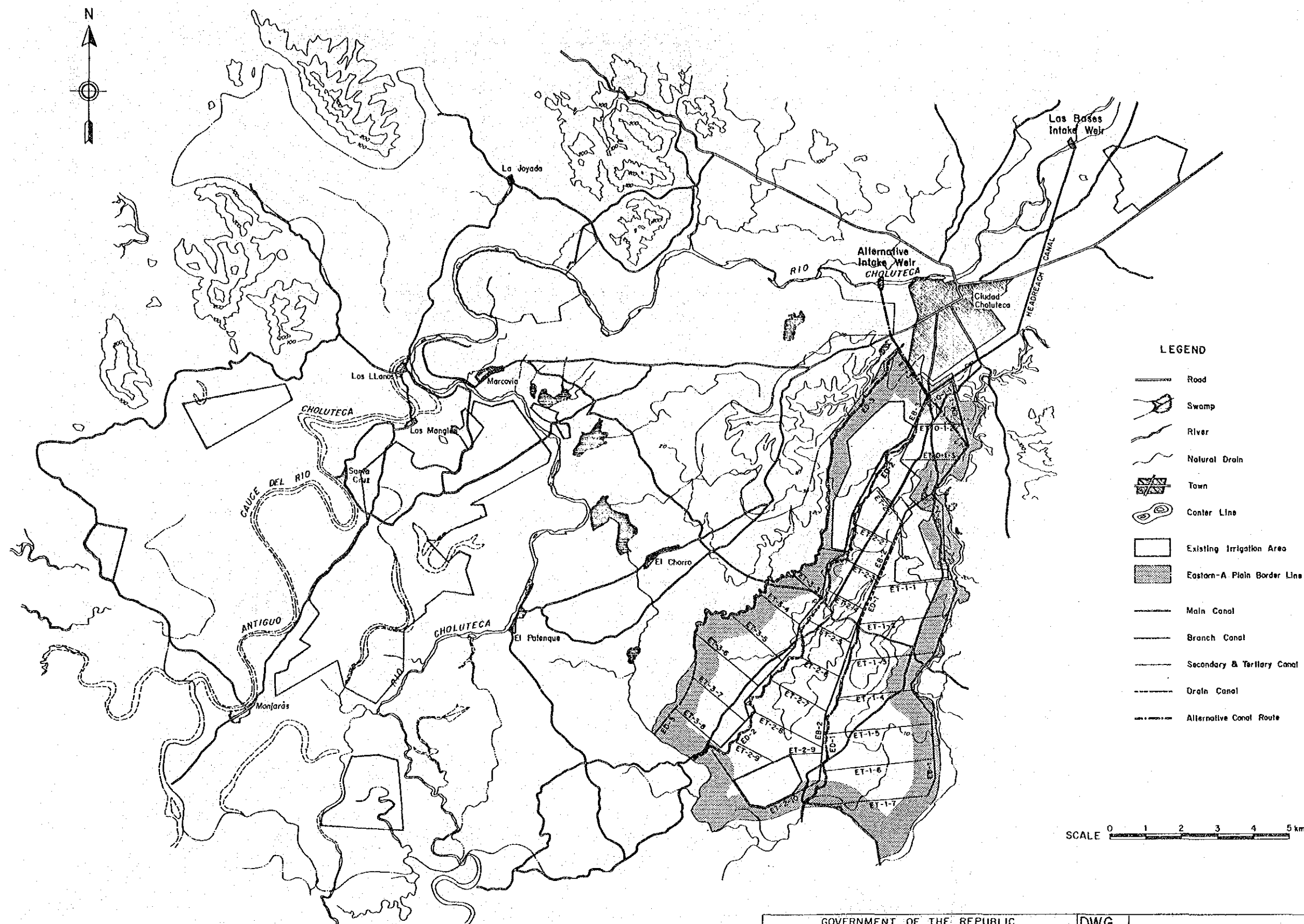
SECONDARY FARM ROAD

SCALE \_\_\_\_\_  
 SCALE \_\_\_\_\_  
 SCALE \_\_\_\_\_

GOVERNMENT OF THE REPUBLIC  
 OF HONDURAS  
 MINISTRY OF NATURAL RESOURCES  
 CHOLUTECA RIVER BASIN  
 AGRICULTURAL DEVELOPMENT PROJECT  
 JAPAN INTERNATIONAL COOPERATION AGENCY

DWG.  
 -08

TYPICAL SECTION OF IRRIGATION  
 DRAINAGE CANAL & FARM ROAD



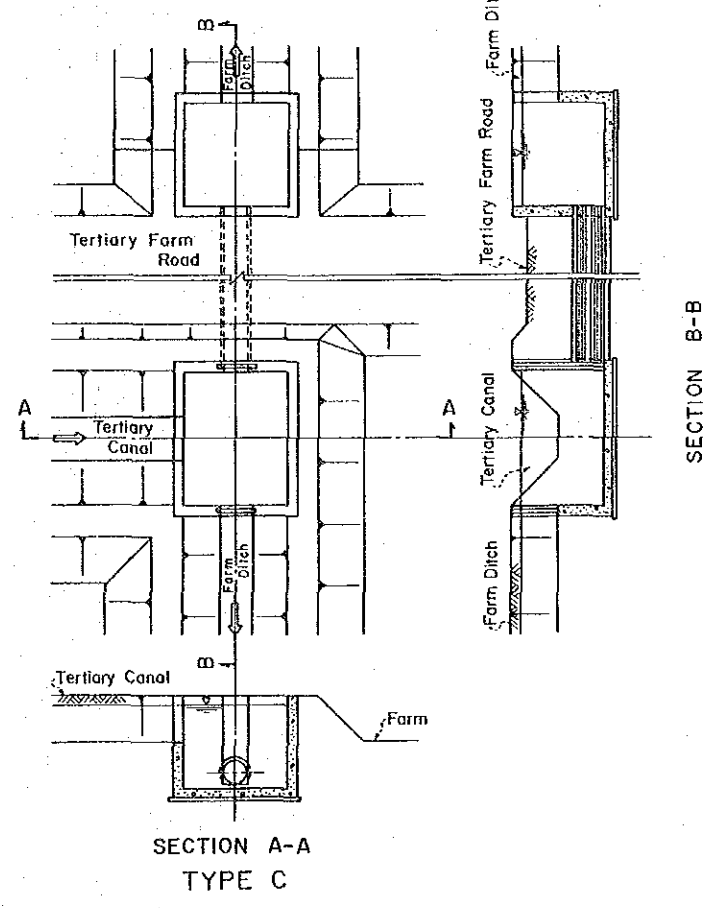
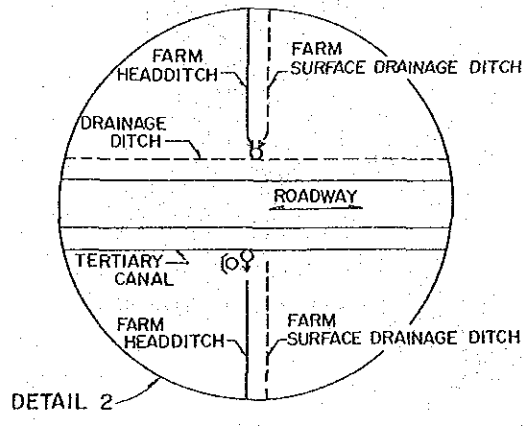
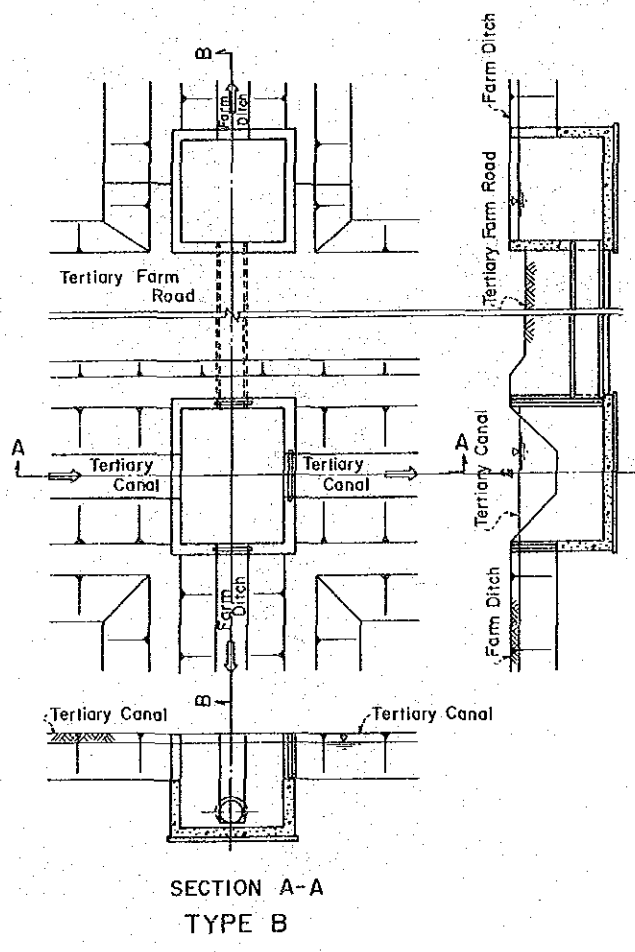
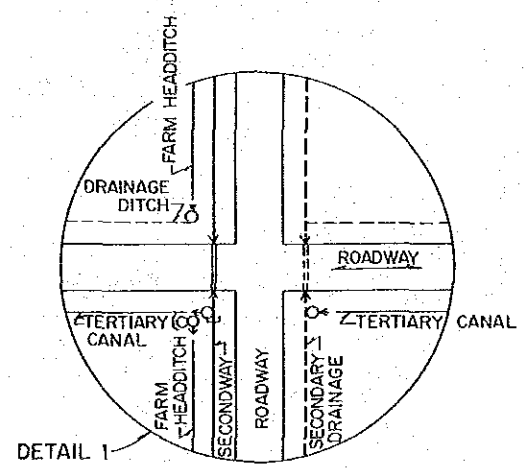
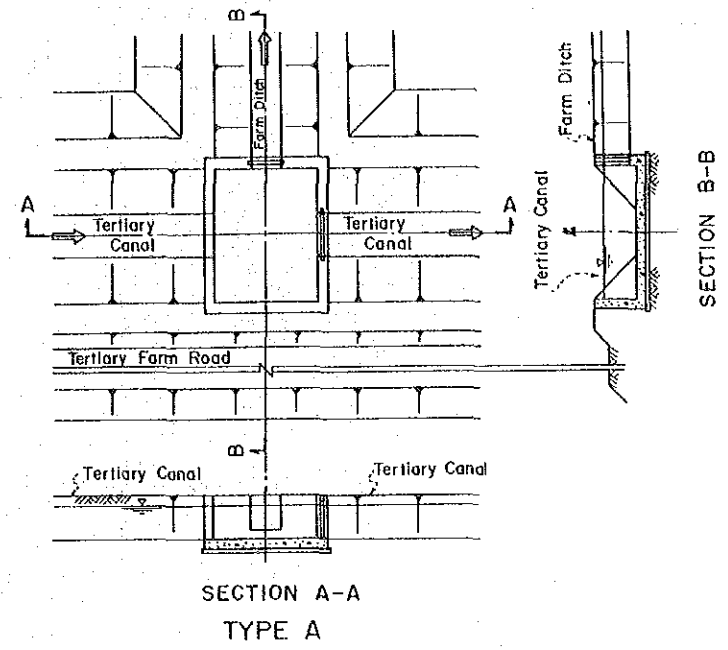
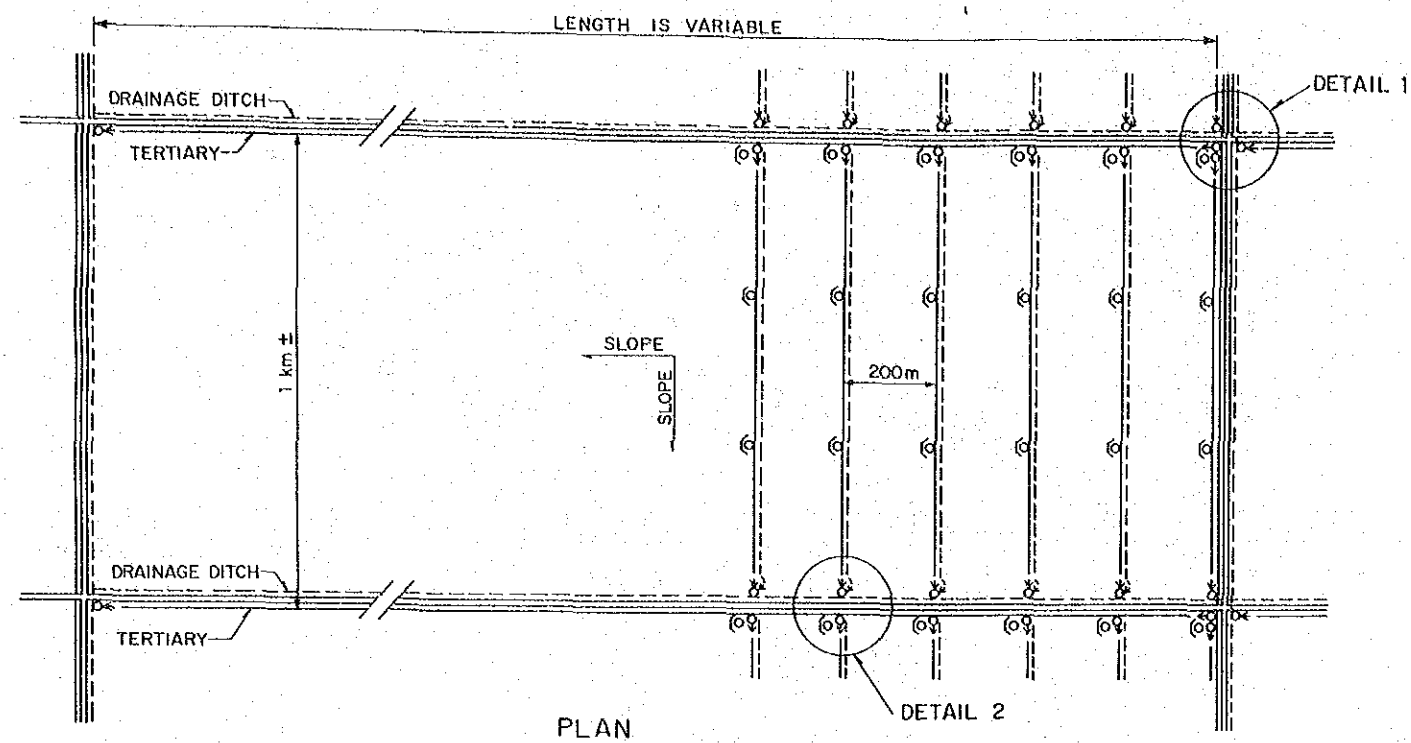
LEGEND

- Road
- Swamp
- River
- Natural Drain
- Town
- Contour Line
- Existing Irrigation Area
- Eastern-A Plain Border Line
- Main Canal
- Branch Canal
- Secondary & Tertiary Canal
- Drain Canal
- Alternative Canal Route

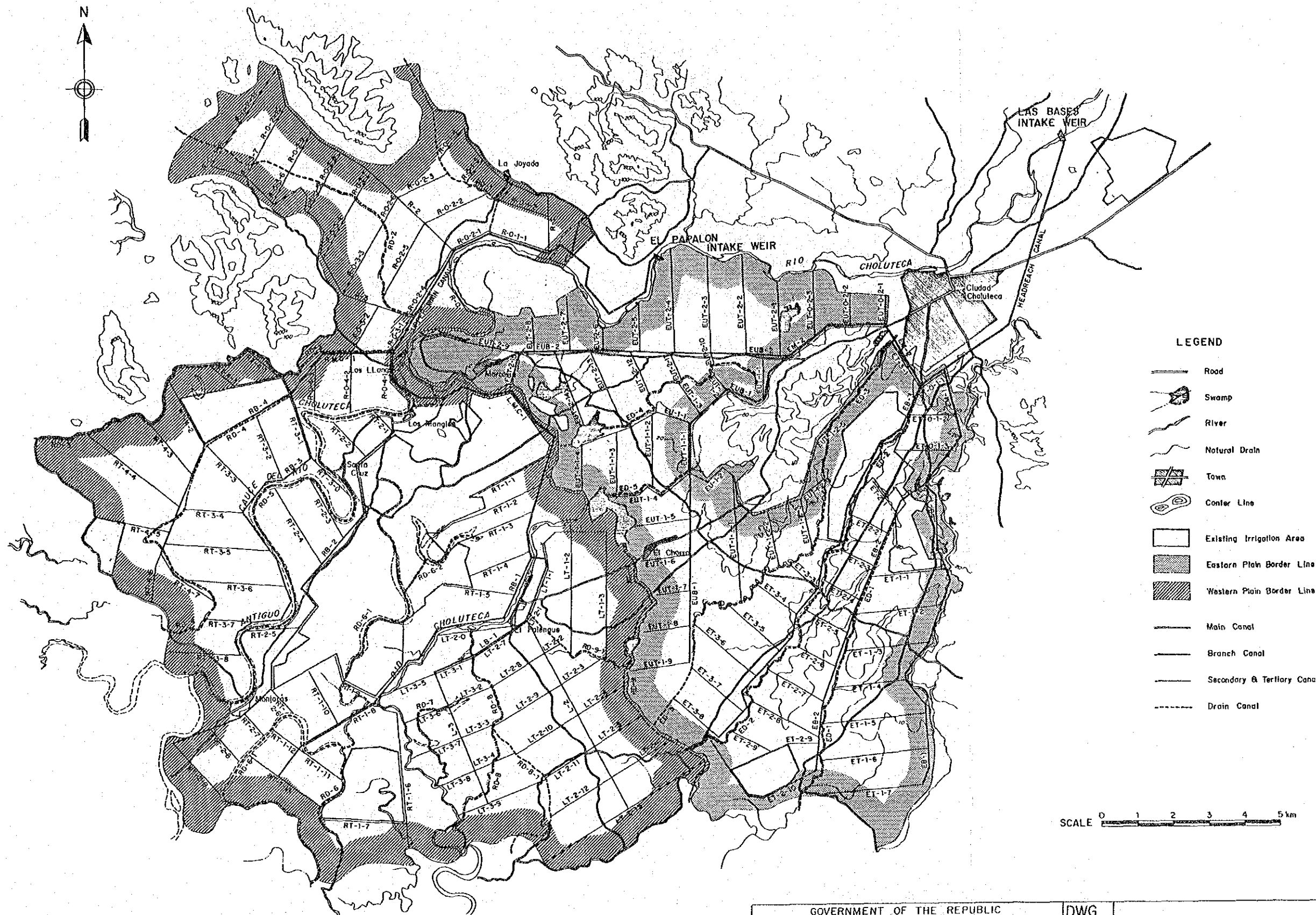
SCALE 0 1 2 3 4 5 km

GOVERNMENT OF THE REPUBLIC OF HONDURAS MINISTRY OF NATURAL RESOURCES CHOLUTECA RIVER BASIN AGRICULTURAL DEVELOPMENT PROJECT JAPAN INTERNATIONAL COOPERATION AGENCY	DWG. -09	LAYOUT IN EASTERN PLAIN-A AREA
---	-------------	-----------------------------------

図面-10 水路および道路関連構造物，  
農道および末端分水工



GOVERNMENT OF THE REPUBLIC OF HONDURAS MINISTRY OF NATURAL RESOURCES CHOLUTECA RIVER BASIN AGRICULTURAL DEVELOPMENT PROJECT JAPAN INTERNATIONAL COOPERATION AGENCY	DWG.	TYPICAL FARM LAYOUT AND DIVISION BOX
	-10	



GOVERNMENT OF THE REPUBLIC  
 OF HONDURAS  
 MINISTRY OF NATURAL RESOURCES  
 CHOLUTECA RIVER BASIN  
 AGRICULTURAL DEVELOPMENT PROJECT  
 JAPAN INTERNATIONAL COOPERATION AGENCY

DWG.  
 - 11

LAYOUT IN WHOLE  
 CHOLUTECA PLAIN







