

AREA E

NO.	SP-NO	COLOR	ROCK	AU (PPB)	SB (PPM)	AS (PPM)	NO.	SP-NO	COLOR	ROCK	AU (PPB)	SB (PPM)	AS (PPM)	NO.	SP-NO	COLOR	ROCK	AU (PPB)	SB (PPM)	AS (PPM)
1	1-1	D-B	F-L	25	50	8L	41	1-41	M-B	F-L	75	25	8L	81	2-30	VP-O	F-I	113	25	8L
2	1-2	M-B	F-L	10L	63	8L	42	1-42	M-RB	F-L	20	50	8L	82	2-31	VP-O	F-I	175	25	8L
3	1-3	M-B	F-L	50	50	8L	43	1-43	D-RB	F-L	300	38	8L	83	2-32	P-YB	F-I	50	25	8L
4	1-4	P-YB	M-L	38	50	8L	44	1-44	D-YB	F-L	200	38	8L	84	2-33	L-B	F-I	238	25	8L
5	1-5	P-YB	M-L	50	50	8L	45	1-45	D-RB	F-L	140	50	8L	85	2-34	L-B	F-I	88	38	8L
6	1-6	M-YB	M-L	80	50	8L	46	1-46	GO	F-L	50	25	8L	86	2-35	P-B	F-I	25	25	8L
7	1-7	M-YB	M-L	38	38	8L	47	1-47	P-YB	F-L	63	25	8L	87	2-36	M-B	F-I	38	25	8L
8	1-8	M-YB	M-L	13	63	8L	48	1-48	P-YB	F-L	250	38	8L	88	2-37	M-B	F-I	38	50	8L
9	1-9	L-B	M-L	38	63	8L	49	1-49	P-YB	F-L	14	50	8L	89	2-38	M-B	F-I	88	25	8L
10	1-10	M-YB	M-L	50	75	8L	50	1-50	D-B	F-L	100	50	8L	90	2-39	L-B	F-I	38	13	8L
11	1-11	M-B	M-L	50	50	8L	51	1-51	D-B	F-L	175	75	8L	91	2-40	L-B	F-I	38	13	8L
12	1-12	D-B	M-L	40	50	8L	52	2-1	M-B	M-L	686	75	8L	92	2-41	P-YB	F-L	50	13	8L
13	1-13	D-B	M-L	10L	38	8L	53	2-2	M-YB	M-L	71	50	8L	93	2-42	P-YB	F-L	25	13	8L
14	1-14	M-B	M-L	175	25	8L	54	2-3	M-YB	M-L	200	75	8L	94	2-43	D-YB	F-L	25	13	8L
15	1-15	M-B	M-L	88	25	8L	55	2-4	D-YB	M-L	57	63	8L	95	2-44	P-YB	F-L	13	13	8L
16	1-16	L-B	M-L	50	50	8L	56	2-5	L-B	M-L	29	50	8L	96	2-45	D-B	F-L	10L	13	8L
17	1-17	M-B	M-L	63	75	8L	57	2-6	M-YB	M-L	114	63	8L	97	2-46	D-B	F-L	100	13	8L
18	1-18	D-B	M-L	100	25	8L	58	2-7	D-YB	M-L	10L	63	8L	98	2-47	P-YB	F-L	375	13	8L
19	1-19	M-B	M-L	100	25	8L	59	2-8	P-YB	M-L	10L	50	8L	99	2-48	M-B	F-L	125	13	8L
20	1-20	M-B	M-L	175	50	8L	60	2-9	M-YB	M-L	29	50	8L	100	2-49	D-B	F-L	75	13	8L
21	1-21	M-B	M-L	20	38	8L	61	2-10	D-YB	M-L	43	50	8L	101	2-50	M-B	F-L	200	13	8L
22	1-22	M-B	M-L	150	38	8L	62	2-11	D-B	M-L	57	38	8L	102	2-51	M-B	F-L	25	13	8L
23	1-23	M-B	M-L	163	38	8L	63	2-12	D-B	M-L	171	50	8L	103	3-1	M-RB	M-L	75	13	8L
24	1-24	P-YB	M-L	225	25	8L	64	2-13	L-B	M-L	29	50	8L	104	3-2	D-RB	M-L	88	13	8L
25	1-25	P-YB	F-I	125	13	8L	65	2-14	L-B	M-L	200	50	8L	105	3-3	D-RB	M-L	88	13	8L
26	1-26	P-YB	F-I	225	13	8L	66	2-15	M-RB	M-L	100	50	8L	106	3-4	P-YB	M-L	25	13	8L
27	1-27	P-YB	F-I	50	13	8L	67	2-16	L-B	M-L	71	25	8L	107	3-5	D-YB	M-L	13	13	8L
28	1-28	L-B	F-I	150	13	8L	68	2-17	M-B	M-L	86	13	8L	108	3-6	D-YB	M-L	38	13	8L
29	1-29	P-YB	F-I	200	13	8L	69	2-18	M-YB	M-L	14	25	8L	109	3-7	M-B	M-L	63	13	8L
30	1-30	P-YB	F-I	350	13	8L	70	2-19	D-B	M-L	43	25	8L	110	3-8	M-B	M-L	200	13	8L
31	1-31	P-YB	F-I	43	25	8L	71	2-20	D-B	M-L	29	25	8L	111	3-9	M-B	M-L	75	13	8L
32	1-32	P-YB	F-I	75	13	8L	72	2-21	D-B	M-L	13	88	8L	112	3-10	M-B	M-L	14	13	8L
33	1-33	P-YB	F-I	25	50	8L	73	2-22	P-YB	M-L	25	50	8L	113	3-11	L-B	M-L	29	13	8L
34	1-34	L-B	F-I	38	38	8L	74	2-23	P-YB	M-L	25	50	8L	114	3-12	D-B	M-L	29	25	8L
35	1-35	M-YB	F-I	50	25	8L	75	2-24	D-YB	F-I	13	50	8L	115	3-13	M-B	M-L	14	13	8L
36	1-36	L-B	F-I	75	38	8L	76	2-25	P-YB	F-I	43	38	8L	116	3-14	M-B	M-L	29	13	8L
37	1-37	M-YB	F-I	29	13	8L	77	2-26	P-YB	F-I	175	25	8L	117	3-15	M-B	M-L	14	13	8L
38	1-38	L-B	F-I	10	25	8L	78	2-27	P-YB	F-I	100	25	8L	118	3-16	M-B	M-L	43	13	8L
39	1-39	L-B	F-I	160	13	8L	79	2-28	P-YB	F-I	10	25	8L	119	3-17	M-B	M-L	29	13	8L
40	1-40	L-B	F-I	13	25	8L	80	2-29	VP-O	F-I	25	13	8L	120	3-18	D-B	M-L	43	13	8L

AREA E

NO.	SP-NO	COLOR	ROCK	AU (PPB)	SB (PPM)	AS (PPM)	NO.	SP-NO	COLOR	ROCK	AU (PPB)	SB (PPM)	AS (PPM)	NO.	SP-NO	COLOR	ROCK	AU (PPB)	SB (PPM)	AS (PPM)
121	3-19	M-B	M-L	129	13	8L	161	4-8	M-B	M-L	38	75	8L	201	4-48	M-B	M-L	57	179	38
122	3-20	M-B	M-L	29	13	8L	162	4-9	GB	M-L	300	63	8L	202	4-49	M-B	M-L	43	196	25
123	3-21	L-B	M-L	57	13	8L	163	4-10	M-B	M-L	25	75	8L	203	4-50	M-B	M-L	114	143	25
124	3-22	L-B	F-I	57	13	8L	164	4-11	DU-YB	M-L	50	75	8L	204	4-51	M-B	M-L	243	143	50
125	3-23	L-B	F-I	14	13	8L	165	4-12	D-B	M-L	25	75	8L	205	5-1	D-B	M-L	71	179	25
126	3-24	L-B	F-I	71	13	8L	166	4-13	M-B	M-L	38	38	8L	206	5-2	D-B	M-L	29	143	50
127	3-25	P-YB	F-I	57	13	8L	167	4-14	M-B	M-L	25	38	8L	207	5-3	D-B	M-L	29	161	25
128	3-26	P-YB	F-I	29	13	8L	168	4-15	M-B	M-L	25	13	8L	208	5-4	D-YB	M-L	43	143	25
129	3-27	M-YB	F-I	14	13	8L	169	4-16	D-B	F-I	75	13	8L	209	5-5	D-YB	M-L	43	125	25
130	3-28	GO	F-I	29	13	8L	170	4-17	M-B	F-I	50	13	8L	210	5-6	L-B	M-L	14	107	25
131	3-29	GO	F-I	43	25	8L	171	4-18	M-B	F-I	50	25	8L	211	5-7	M-B	M-L	29	125	13
132	3-30	GO	F-I	14	13	8L	172	4-19	P-YB	F-I	50	25	8L	212	5-8	D-B	M-L	188	125	25
133	3-31	L-B	F-L	43	13	8L	173	4-20	P-YB	F-I	67	13	8L	213	5-9	L-B	M-L	50	125	25
134	3-32	P-YB	M-L	29	38	8L	174	4-21	P-YB	F-I	67	13	8L	214	5-10	M-B	M-L	50	107	25
135	3-33	L-B	M-L	14	13	8L	175	4-22	L-B	F-I	50	13	8L	215	5-11	D-YB	M-L	113	143	25
136	3-34	L-B	M-L	14	13	8L	176	4-23	L-B	F-I	17	25	8L	216	5-12	M-B	M-L	25	107	25
137	3-35	L-B	M-L	29	13	8L	177	4-24	P-YB	F-I	17	54	25	217	5-13	M-B	F-I	25	143	25
138	3-36	D-RB	M-L	14	25	8L	178	4-25	D-B	F-I	17	89	13	218	5-14	M-B	F-I	38	143	25
139	3-37	D-YB	F-L	57	13	8L	179	4-26	M-B	F-I	33	89	25	219	5-15	L-B	M-L	50	71	25
140	3-38	L-B	F-L	200	13	8L	180	4-27	P-YB	F-I	50	54	25	220	5-16	D-RB	M-L	75	179	50
141	3-39	L-B	F-L	29	25	8L	181	4-28	P-YB	F-I	50	54	13	221	5-17	L-B	M-L	225	143	25
142	3-40	L-B	F-L	29	25	8L	182	4-29	L-B	F-I	33	54	25	222	5-18	GO	M-L	38	107	25
143	3-41	M-B	M-L	43	13	8L	183	4-30	P-YB	F-I	67	54	25	223	5-19	L-B	F-I	44	143	13
144	3-42	M-YB	F-L	29	13	8L	184	4-31	L-B	M-L	83	36	25	224	5-20	GO	F-I	100	125	13
145	3-43	M-YB	F-L	43	13	8L	185	4-32	L-B	M-L	50	38	38	225	5-21	P-YB	F-I	100	89	13
146	3-44	M-B	F-L	71	25	8L	186	4-33	L-B	M-L	33	36	25	226	5-22	P-YB	F-I	50	71	13
147	3-45	D-B	F-L	57	50	8L	187	4-34	M-B	F-L	33	89	50	227	5-23	P-YB	F-I	50	71	13
148	3-46	D-YB	F-L	42	38	8L	188	4-35	M-B	F-L	50	107	25	228	5-24	P-YB	F-I	13	71	13
149	3-47	D-YB	F-L	57	25	8L	189	4-36	D-B	F-L	67	107	25	229	5-25	P-YB	F-I	38	107	13
150	3-48	D-YB	F-L	71	38	8L	190	4-37	D-YB	F-L	167	89	25	230	5-26	P-YB	F-I	125	107	25
151	3-49	DU-YB	F-L	43	38	8L	191	4-38	D-YB	F-L	17	89	25	231	5-27	P-YB	F-I	63	71	25
152	3-50	DU-YB	F-L	38	50	8L	192	4-39	P-YB	F-L	57	54	25	232	5-28	D-YB	F-I	57	107	25
153	3-51	DU-YB	F-L	50	25	8L	193	4-40	GO	F-L	43	71	25	233	5-29	M-YB	M-L	129	143	38
154	4-1	D-RB	M-L	13	38	8L	194	4-41	M-B	F-L	29	143	25	234	5-30	L-B	M-L	43	179	25
155	4-2	D-RB	M-L	25	38	8L	195	4-42	D-RB	F-L	43	143	38	235	5-31	M-B	M-L	29	161	38
156	4-3	D-B	M-L	13	38	8L	196	4-43	D-RB	F-L	71	143	25	236	5-32	L-B	M-L	86	107	25
157	4-4	D-B	M-L	38	88	8L	197	4-44	D-B	F-L	29	125	25	237	5-33	L-B	F-L	29	143	38
158	4-5	D-B	M-L	25	50	8L	198	4-45	GB	F-L	129	125	25	238	5-34	M-YB	F-L	29	143	25
159	4-6	M-B	M-L	13	75	8L	199	4-46	M-B	F-L	14	161	25	239	5-35	M-YB	M-I	43	143	50
160	4-7	L-B	M-L	25	50	8L	200	4-47	M-B	F-L	29	179	25	240	5-36	P-YB	F-L	29	89	25

AREA E

NO.	SP-NO	COLOR	ROCK	AU (PPB)	SB (PPM)	AS (PPM)	NO.	SP-NO	COLOR	ROCK	AU (PPB)	SB (PPM)	AS (PPM)	NO.	SP-NO	COLOR	ROCK	AU (PPB)	SB (PPM)	AS (PPM)
241	5-37	D-YB	F-L	29	89	25	281	6-26	D-YB	F-I	29	71	25	321	7-15	D-B	M-L	25	71	25
242	5-38	GO	F-L	14	89	25	282	6-27	L-B	F-I	43	36	13	322	7-16	M-B	M-L	67	107	13
243	5-39	P-YB	F-L	14	54	25	283	6-28	M-B	M-L	100	179	25	323	7-17	D-B	F-I	67	71	13
244	5-40	P-YB	F-L	14	36	25	284	6-29	D-B	M-I	43	179	13	324	7-18	M-B	F-I	33	107	13
245	5-41	M-B	F-L	29	143	38	285	6-30	D-B	M-L	57	179	25	325	7-19	M-YB	M-L	33	71	25
246	5-42	M-B	M-L	57	89	38	286	6-31	D-YB	M-L	14	125	25	326	7-20	GO	F-I	33	71	13
247	5-43	M-B	M-L	29	143	25	287	6-32	M-YB	F-L	29	89	13	327	7-21	P-YB	F-I	33	71	25
248	5-44	M-B	M-L	43	143	63	288	6-33	L-B	F-L	243	89	13	328	7-22	M-B	F-I	67	71	25
249	5-45	D-B	M-L	86	107	38	289	6-34	L-B	M-I	14	125	13	329	7-23	P-YB	F-I	67	54	13
250	5-46	D-B	M-L	22	107	38	290	6-35	L-B	F-L	14	89	13	330	7-24	P-YB	F-I	100	89	13
251	5-47	M-B	M-L	29	54	38	291	6-36	GO	F-L	14	71	25	331	7-25	M-YB	F-I	33	89	13
252	5-48	D-B	M-L	25	143	25	292	6-37	P-YB	F-L	67	89	13	332	7-26	M-B	F-I	29	107	25
253	5-49	D-B	F-L	50	143	25	293	6-38	P-YB	BIF	67	71	13	333	7-27	D-B	F-I	43	125	25
254	5-50	D-B	F-L	38	125	25	294	6-39	D-YB	F-L	33	71	13	334	7-28	M-RB	M-L	57	143	25
255	5-51	M-B	F-L	50	107	25	295	6-40	VP-O	F-L	33	54	13	335	7-29	M-RB	M-I	43	107	13
256	6-1	M-B	M-L	25	107	13	296	6-41	DU-YB	M-L	33	71	25	336	7-30	M-B	M-L	86	107	25
257	6-2	M-B	M-L	38	143	25	297	6-42	DU-YB	M-L	167	143	25	337	7-31	P-YB	F-L	57	71	25
258	6-3	D-B	F-I	38	179	25	298	6-43	DU-YB	M-L	167	107	13	338	7-32	M-B	F-L	57	89	25
259	6-4	D-B	F-I	75	179	25	299	6-44	M-B	M-L	33	125	25	339	7-33	M-YB	F-L	86	125	25
260	6-5	D-YB	M-L	50	143	38	300	6-45	M-B	M-L	33	107	13	340	7-34	L-B	F-L	29	89	25
261	6-6	M-B	M-L	50	143	25	301	6-46	M-RB	M-L	67	107	25	341	7-35	M-YB	F-L	14	107	25
262	6-7	M-B	M-L	38	107	13	302	6-47	M-RB	M-L	33	125	25	342	7-36	P-YB	M-I	329	107	13
263	6-8	M-B	M-L	13	125	25	303	6-48	M-RB	M-L	67	125	13	343	7-37	GO	BIF	29	54	13
264	6-9	D-B	M-L	25	143	38	304	6-49	P-B	F-L	67	107	25	344	7-38	P-YB	F-L	29	89	13
265	6-10	D-B	M-I	50	143	25	305	6-50	P-B	M-L	67	107	25	345	7-39	GO	F-L	14	54	25
266	6-11	D-B	F-I	25	143	25	306	6-51	P-B	M-L	67	125	25	346	7-40	VP-O	F-L	29	54	13
267	6-12	DU-YB	M-L	113	143	25	307	7-1	M-B	M-L	67	143	25	347	7-41	D-B	M-L	86	89	25
268	6-13	D-RB	M-L	375	107	25	308	7-2	M-B	M-L	100	143	38	348	7-42	D-B	M-L	29	89	25
269	6-14	L-B	M-L	38	143	25	309	7-3	P-YB	M-L	67	107	50	349	7-43	M-YB	M-L	14	89	25
270	6-15	M-B	M-L	25	125	25	310	7-4	P-YB	F-I	67	71	25	350	7-44	M-B	F-L	29	54	25
271	6-16	L-B	M-L	13	125	25	311	7-5	D-YB	F-I	67	107	13	351	7-45	M-B	M-L	43	89	25
272	6-17	L-B	M-L	14	89	13	312	7-6	M-YB	F-I	33	107	13	352	7-46	D-RB	M-L	67	89	25
273	6-18	L-B	M-L	14	143	25	313	7-7	M-B	M-L	33	89	38	353	7-47	D-RB	M-L	67	107	25
274	6-19	L-B	F-I	14	143	25	314	7-8	M-B	M-L	67	89	13	354	7-48	D-RB	M-L	67	143	25
275	6-20	L-B	F-I	14	125	13	315	7-9	D-B	M-I	33	143	13	355	7-49	D-RB	M-L	33	89	25
276	6-21	P-YB	F-I	10L	107	13	316	7-10	M-B	M-L	33	71	13	356	7-50	D-RB	M-L	67	107	50
277	6-22	D-YB	F-I	29	107	13	317	7-11	D-B	M-L	33	71	25	357	7-51	D-RB	M-L	133	107	50
278	6-23	D-YB	F-I	14	107	13	318	7-12	D-B	M-L	33	107	38	358	8-1	M-B	M-L	133	143	25
279	6-24	D-YB	F-I	14	71	13	319	7-13	M-B	M-L	33	107	25	359	8-2	P-YB	M-L	100	125	13
280	6-25	L-B	F-I	10L	71	25	320	7-14	M-B	M-L	67	71	13	360	8-3	M-YB	M-L	67	71	25

AREA E

NO.	SP-NO	COLOR	ROCK	AU (PPB)	SB (PPM)	AS (PPM)	NO.	SP-NO	COLOR	ROCK	AU (PPB)	SB (PPM)	AS (PPM)	NO.	SP-NO	COLOR	ROCK	AU (PPB)	SB (PPM)	AS (PPM)
361	8-4	M-YB	M-L	67	125	25	401	8-44	M-B	F-L	33	107	25	441	9-33	P-YB	F-L	17	71	25
362	8-5	M-B	F-I	67	71	25	402	8-45	M-B	M-L	33	89	25	442	9-34	P-YB	F-L	17	71	25
363	8-6	L-B	F-I	67	89	25	403	8-46	M-B	M-L	67	143	25	443	9-35	P-YB	F-L	33	71	63
364	8-7	P-YB	M-L	200	71	13	404	8-47	D-RB	M-L	67	179	38	444	9-36	M-YB	F-L	17	125	25
365	8-8	L-B	M-I	200	54	25	405	8-48	M-RB	M-L	33	161	13	445	9-37	M-YB	M-L	33	89	25
366	8-9	D-B	M-L	67	89	38	406	8-49	D-RB	M-L	33	125	25	446	9-38	M-YB	M-L	17	143	25
367	8-10	D-B	M-L	33	107	38	407	8-50	D-RB	M-L	33	179	25	447	9-39	M-B	M-L	33	161	25
368	8-11	DU-YB	M-L	67	125	25	408	8-51	D-YB	M-L	33	179	38	448	9-40	M-B	M-L	33	107	25
369	8-12	D-B	M-L	33	89	25	409	9-1	GB	F-I	33	143	25	449	9-41	M-B	M-L	17	125	25
370	8-13	M-YB	F-I	33	143	38	410	9-2	M-B	F-I	33	89	25	450	9-42	M-YB	M-L	67	125	25
371	8-14	D-B	M-L	33	54	25	411	9-3	M-B	M-I	33	107	13	451	9-43	M-YB	M-L	33	125	25
372	8-15	P-B	F-I	33	71	13	412	9-4	M-B	M-I	67	107	25	452	9-44	L-B	F-L	33	107	25
373	8-16	L-B	M-L	33	107	25	413	9-5	M-B	M-L	67	125	13	453	9-45	L-B	F-L	50	179	25
374	8-17	D-B	M-L	63	71	13	414	9-6	DU-YB	M-L	67	125	13	454	9-46	M-B	M-L	33	125	38
375	8-18	D-B	F-I	33	89	25	415	9-7	DU-YB	M-L	100	107	25	455	9-47	M-B	M-L	533	107	38
376	8-19	M-YB	F-I	33	36	13	416	9-8	DU-YB	M-L	33	143	13	456	9-48	M-B	M-L	33	125	38
377	8-20	L-B	F-I	100	54	13	417	9-9	DU-YB	M-L	67	143	25	457	9-49	M-B	M-L	33	179	25
378	8-21	P-YB	F-I	33	71	25	418	9-10	DU-YB	M-L	67	143	25	458	9-50	M-YB	M-L	50	125	25
379	8-22	L-B	F-I	33	71	25	419	9-11	M-YB	M-L	67	107	25	459	9-51	M-YB	M-L	33	89	25
380	8-23	L-B	M-L	200	107	25	420	9-12	L-B	M-L	67	89	13	460	10-1	P-YB	M-I	17	71	25
381	8-24	L-B	M-L	933	107	25	421	9-13	M-B	F-I	33	125	25	461	10-2	M-B	M-L	33	107	25
382	8-25	D-B	M-I	33	125	38	422	9-14	M-B	F-I	33	71	13	462	10-3	D-B	M-L	17	125	38
383	8-26	M-B	M-L	33	143	25	423	9-15	M-YB	M-L	67	71	25	463	10-4	M-B	M-L	17	107	38
384	8-27	M-B	M-L	33	179	25	424	9-16	M-YB	M-L	67	89	13	464	10-5	M-B	M-L	33	107	25
385	8-28	D-RB	M-L	67	179	25	425	9-17	L-B	F-L	33	71	25	465	10-6	D-B	M-L	100	125	25
386	8-29	M-B	M-L	333	143	50	426	9-18	M-YB	F-L	33	107	25	466	10-7	D-B	M-L	33	143	25
387	8-30	L-B	F-L	133	89	25	427	9-19	D-B	M-L	67	107	25	467	10-8	M-B	F-I	33	125	25
388	8-31	L-B	F-L	200	107	25	428	9-20	M-B	M-L	67	107	38	468	10-9	P-YB	F-I	33	107	25
389	8-32	L-B	F-L	100	89	25	429	9-21	M-YB	M-I	133	89	35	469	10-10	M-YB	F-I	10L	125	25
390	8-33	P-YB	F-L	200	89	25	430	9-22	L-B	M-L	467	89	25	470	10-11	M-YB	M-L	17	107	38
391	8-34	L-B	F-L	13	71	25	431	9-23	M-B	M-L	200	107	13	471	10-12	L-B	F-L	33	107	25
392	8-35	L-B	F-L	67	89	25	432	9-24	L-B	M-L	100	71	25	472	10-13	L-B	F-L	33	143	38
393	8-36	GO	F-L	67	89	25	433	9-25	L-B	F-L	33	107	25	473	10-14	L-B	F-L	17	125	25
394	8-37	GO	F-L	67	54	13	434	9-26	M-B	F-L	100	54	25	474	10-15	L-B	F-L	17	143	25
395	8-38	P-YB	F-L	33	54	13	435	9-27	L-B	F-L	200	89	13	475	10-16	L-B	M-L	17	143	38
396	8-39	P-YB	F-L	33	54	13	436	9-28	GO	F-L	200	71	100	476	10-17	L-B	F-L	33	143	38
397	8-40	P-YB	F-L	67	71	13	437	9-29	L-B	F-L	33	71	13	477	10-18	L-B	F-L	33	125	50
398	8-41	M-B	M-L	13	89	25	438	9-30	L-B	F-L	17	54	13	478	10-19	M-RB	M-L	800	125	25
399	8-42	D-B	M-L	33	107	25	439	9-31	GO	F-L	33	54	13	479	10-20	L-B	M-L	133	143	25
400	8-43	P-B	M-L	33	107	13	440	9-32	GO	F-L	50	54	25	480	10-21	M-YB	M-L	33	89	25

AREA E

NO.	SP-NO	COLOR	ROCK	AU (PPB)	SB (PPM)	AS (PPM)	NO.	SP-NO	COLOR	ROCK	AU (PPB)	SB (PPM)	AS (PPM)	NO.	SP-NO	COLOR	ROCK	AU (PPB)	SB (PPM)	AS (PPM)
481	10-22	M-B	M-L	17	125	25	521	11-11	D-B	F-L	133	125	25	561	11-51	M-B	M-L	67	89	25
482	10-23	M-B	F-L	33	107	25	522	11-12	M-B	F-L	33	125	38	562	12-1	D-YB	F-I	33	125	13
483	10-24	M-YB	F-L	50	125	25	523	11-13	M-B	F-L	150	107	25	563	12-2	D-YB	M-L	267	107	25
484	10-25	P-YB	F-L	33	71	25	524	11-14	M-B	F-L	50	107	25	564	12-3	D-YB	M-L	33	107	25
485	10-26	P-YB	F-L	67	143	25	525	11-15	M-B	F-L	33	161	38	565	12-4	M-B	M-L	133	71	13
486	10-27	L-B	F-L	17	71	13	526	11-16	M-B	F-L	33	125	38	566	12-5	M-B	F-L	50	107	13
487	10-28	P-YB	F-L	33	71	13	527	11-17	M-B	M-L	100	107	25	567	12-6	M-B	F-L	67	89	13
488	10-29	P-YB	F-L	10L	71	13	528	11-18	M-B	M-L	67	125	13	568	12-7	M-B	M-L	33	107	13
489	10-30	P-YB	F-L	17	54	25	529	11-19	M-B	M-L	100	143	38	569	12-8	M-YB	M-L	67	71	25
490	10-31	P-YB	F-L	10L	54	13	530	11-20	M-B	F-L	333	107	25	570	12-9	P-YB	M-L	33	107	25
491	10-32	P-YB	F-L	10L	54	25	531	11-21	M-B	F-L	94	71	13	571	12-10	P-YB	F-L	50	71	25
492	10-33	P-YB	F-L	10L	71	13	532	11-22	M-B	F-L	17	143	13	572	12-11	M-YB	F-L	33	125	13
493	10-34	P-YB	M-L	17	107	38	533	11-23	M-B	F-L	33	125	25	573	12-12	M-YB	M-L	83	107	38
494	10-35	M-YB	M-L	17	107	38	534	11-24	M-B	F-L	33	71	13	574	12-13	M-YB	M-L	83	71	38
495	10-36	M-B	M-L	17	89	25	535	11-25	GO	F-L	50	71	13	575	12-14	M-YB	M-L	667	71	25
496	10-37	M-B	M-L	33	125	25	536	11-26	D-YB	F-L	67	125	13	576	12-15	M-YB	M-L	17	89	25
497	10-38	M-B	M-L	50	107	25	537	11-27	M-YB	BIF	33	107	13	577	12-16	M-YB	M-L	17	71	38
498	10-39	D-YB	M-L	33	125	25	538	11-28	M-YB	F-L	33	71	13	578	12-17	L-B	M-L	3333	54	25
499	10-40	M-B	M-L	33	107	25	539	11-29	D-YB	F-L	33	71	13	579	12-18	D-B	F-L	466	107	50
500	10-41	M-B	M-L	33	125	25	540	11-30	D-YB	F-L	133	71	13	580	12-19	M-B	F-L	67	54	50
501	10-42	M-B	M-L	17	107	13	541	11-31	P-YB	F-L	33	71	13	581	12-20	M-B	F-L	17	89	38
502	10-43	L-B	M-L	33	89	13	542	11-32	P-YB	M-L	17	71	25	582	12-21	M-B	F-L	17	71	25
503	10-44	L-B	F-L	267	107	38	543	11-33	P-YB	M-L	17	71	13	583	12-22	P-YB	F-L	33	71	38
504	10-45	M-YB	F-L	17	107	38	544	11-34	L-B	M-L	33	107	13	584	12-23	M-YB	F-L	17	71	38
505	10-46	M-B	F-L	17	125	38	545	11-35	L-B	M-I	50	107	38	585	12-24	M-YB	F-L	67	71	13
506	10-47	M-B	M-L	17	143	38	546	11-36	L-B	M-L	167	71	13	586	12-25	P-YB	BIF	33	71	25
507	10-48	M-B	M-L	33	107	25	547	11-37	L-B	M-L	17	143	25	587	12-26	P-YB	F-L	281	54	25
508	10-49	M-YB	M-L	50	107	13	548	11-38	M-B	M-L	150	107	13	588	12-27	VP-O	F-L	33	54	25
509	10-50	M-YB	M-L	33	161	25	549	11-39	M-B	M-L	167	125	25	589	12-28	VP-O	F-L	50	71	13
510	10-51	M-B	M-L	33	143	25	550	11-40	D-RB	M-L	233	107	38	590	12-29	VP-O	F-L	33	89	25
511	11-1	D-YB	M-L	17	179	38	551	11-41	D-RB	M-L	600	107	25	591	12-30	P-YB	M-L	40	71	50
512	11-2	D-B	M-L	33	143	25	552	11-42	D-RB	M-L	333	71	13	592	12-31	VP-O	M-L	17	89	38
513	11-3	M-B	M-L	67	179	13	553	11-43	L-B	M-L	83	107	38	593	12-32	VP-O	M-L	20	107	38
514	11-4	M-B	F-I	83	143	25	554	11-44	L-B	F-L	133	71	13	594	12-33	D-B	M-L	17	107	38
515	11-5	M-B	F-I	33	125	13	555	11-45	M-YB	F-L	33	71	25	595	12-34	M-B	M-L	33	88	75
516	11-6	M-B	F-I	33	125	38	556	11-46	M-B	F-L	17	89	25	596	12-35	M-B	M-L	83	63	63
517	11-7	M-B	M-L	17	107	13	557	11-47	M-B	M-L	17	89	13	597	12-36	D-RB	M-I	17	75	50
518	11-8	M-B	M-L	67	107	38	558	11-48	M-B	M-L	17	71	38	598	12-37	D-RB	M-I	17	50	75
519	11-9	M-YB	F-L	33	89	25	559	11-49	M-B	M-L	167	107	13	599	12-38	D-YB	M-I	17	50	75
520	11-10	M-YB	F-L	33	125	38	560	11-50	D-B	M-L	3167	143	25	600	12-39	M-B	M-L	33	75	88

AREA E

NO.	SP-NO	COLOR	ROCK	AU (PPB)	SB (PPM)	AS (PPM)	NO.	SP-NO	COLOR	ROCK	AU (PPB)	SB (PPM)	AS (PPM)	NO.	SP-NO	COLOR	ROCK	AU (PPB)	SB (PPM)	AS (PPM)
601	12-40	M-B	M-L	17	75	75	641	13-29	P-YB	M-L	60	50	89	681	14-18	P-YB	M-L	33	50	50
602	12-41	M-B	M-L	33	63	50	642	13-30	M-B	M-L	40	75	100	682	14-19	L-B	F-L	17	38	63
603	12-42	D-RB	M-L	100	75	50	643	13-31	M-B	M-L	60	50	75	683	14-20	L-B	F-L	33	50	50
604	12-43	D-RB	M-L	33	100	63	644	13-32	D-B	M-L	20	50	78	684	14-21	M-YB	M-L	17	25	63
605	12-44	M-B	F-L	17	88	50	645	13-33	M-B	M-L	20	63	50	685	14-22	M-YB	M-L	33	38	50
606	12-45	M-B	F-L	17	50	63	646	13-34	M-B	M-L	20	75	50	686	14-23	M-YB	M-L	17	38	38
607	12-46	M-B	F-L	33	50	50	647	13-35	M-B	M-L	40	50	63	687	14-24	M-B	M-L	17	50	75
608	12-47	L-B	F-L	33	75	50	648	13-36	M-B	M-L	20	63	75	688	14-25	M-B	M-L	60	38	89
609	12-48	L-B	M-L	50	50	50	649	13-37	M-B	M-L	20	50	50	689	14-26	M-YB	M-L	50	50	75
610	12-49	L-B	M-L	17	75	63	650	13-38	M-B	M-I	20	50	63	690	14-27	M-YB	M-L	33	38	111
611	12-50	M-RB	M-L	33	63	75	651	13-39	M-B	F-I	20	75	75	691	14-28	M-B	M-L	83	50	50
612	12-51	M-B	M-L	17	50	78	652	13-40	D-B	F-I	60	75	78	692	14-29	M-B	M-L	33	50	133
613	13-1	M-B	M-L	50	63	50	653	13-41	D-RB	F-I	20	75	75	693	14-30	M-YB	M-L	17	38	50
614	13-2	M-B	F-L	33	50	63	654	13-42	M-B	F-I	20	75	63	694	14-31	M-B	M-L	17	38	111
615	13-3	M-B	F-L	50	50	75	655	13-43	D-RB	M-L	20	63	75	695	14-32	M-B	M-L	133	38	75
616	13-4	M-B	M-L	17	63	75	656	13-44	D-RB	M-L	20	63	78	696	14-33	M-B	M-L	33	50	89
617	13-5	M-YB	M-L	33	50	75	657	13-45	M-B	M-L	20	50	89	697	14-34	M-RB	M-L	17	50	111
618	13-6	M-YB	M-L	17	50	50	658	13-46	M-B	F-L	10L	50	75	698	14-35	M-RB	M-L	33	38	111
619	13-7	M-YB	M-L	100	75	75	659	13-47	M-YB	F-L	20	38	75	699	14-36	L-B	M-L	67	38	75
620	13-8	M-B	M-L	33	75	63	660	13-48	L-B	M-L	10L	38	63	700	14-37	L-B	M-L	33	38	75
621	13-9	M-B	M-L	33	50	75	661	13-49	L-B	M-L	20	38	50	701	14-38	L-B	M-L	17	38	38
622	13-10	M-B	M-L	17	50	50	662	13-50	M-B	M-L	40	50	111	702	14-39	L-B	M-I	33	38	75
623	13-11	M-B	M-L	50	50	63	663	13-51	M-B	M-L	20	50	50	703	14-40	D-B	F-I	33	38	63
624	13-12	M-B	M-L	33	63	75	664	14-1	M-YB	F-I	40	75	75	704	14-41	D-B	F-I	17	50	78
625	13-13	M-B	M-L	17	75	75	665	14-2	M-YB	F-I	40	50	111	705	14-42	D-B	F-I	33	50	133
626	13-14	M-B	M-L	20	50	63	666	14-3	P-YB	F-I	20	38	89	706	14-43	D-RB	F-I	67	50	111
627	13-15	D-YB	M-L	33	75	50	667	14-4	P-YB	F-I	40	38	111	707	14-44	M-B	M-L	33	38	63
628	13-16	M-B	F-L	40	50	75	668	14-5	P-YB	F-I	33	25	89	708	14-45	M-B	F-L	33	50	146
629	13-17	M-B	F-L	40	38	75	669	14-6	P-YB	F-I	33	25	75	709	14-46	L-B	M-L	17	38	63
630	13-18	D-B	F-L	10L	50	75	670	14-7	P-YB	F-I	20	25	25	710	14-47	L-B	M-L	17	38	111
631	13-19	P-YB	F-L	10L	10L	8L	671	14-8	P-YB	F-I	17	25	50	711	14-48	L-B	M-L	17	38	133
632	13-20	M-YB	F-L	20	50	63	672	14-9	P-YB	BIF	33	25	111	712	14-49	L-B	F-L	33	25	89
633	13-21	M-YB	F-L	20	50	75	673	14-10	P-YB	BIF	17	25	50	713	14-50	M-B	M-L	33	38	111
634	13-22	P-YB	BIF	40	38	78	674	14-11	P-YB	BIF	33	50	111	714	14-51	M-B	M-L	17	38	89
635	13-23	P-YB	BIF	20	38	50	675	14-12	L-B	BIF	17	50	50	715	15-1	M-YB	M-L	17	38	89
636	13-24	VP-0	F-I	40	38	63	676	14-13	L-B	F-L	33	50	38	716	15-2	M-YB	M-L	33	50	50
637	13-25	VP-0	F-I	120	38	75	677	14-14	L-B	F-L	50	50	50	717	15-3	L-B	M-I	17	38	50
638	13-26	P-YB	F-I	40	38	78	678	14-15	L-B	F-L	33	50	63	718	15-4	L-B	M-I	33	38	75
639	13-27	GO	F-I	20	50	89	679	14-16	M-YB	F-L	33	50	38	719	15-5	L-B	M-I	17	38	50
640	13-28	GO	M-L	40	25	75	680	14-17	P-YB	M-L	17	38	50	720	15-6	L-B	M-I	33	25	75

AREA E

NO.	SP-NO	COLOR	ROCK	AU (PPB)	SB (PPM)	AS (PPM)	NO.	SP-NO	COLOR	ROCK	AU (PPB)	SB (PPM)	AS (PPM)	NO.	SP-NO	COLOR	ROCK	AU (PPB)	SB (PPM)	AS (PPM)
721	15-7	L-B	F-L	17	38	111	761	15-47	M-B	M-L	40	88	111	801	16-36	D-RB	M-L	50	75	63
722	15-8	L-B	M-L	33	50	89	762	15-48	M-B	M-L	17	75	135	802	16-37	M-B	M-L	333	63	25
723	15-9	M-YB	M-L	33	38	111	763	15-49	M-B	M-L	33	63	89	803	16-38	M-B	M-L	60	75	50
724	15-10	M-YB	M-L	50	38	111	764	15-50	L-B	M-L	33	63	135	804	16-39	M-B	M-L	33	63	50
725	15-11	L-B	F-L	33	50	75	765	15-51	M-YB	M-L	17	75	146	805	16-40	M-YB	M-L	17	75	25
726	15-12	L-B	F-L	17	38	111	766	16-1	D-YB	M-L	33	75	111	806	16-41	M-YB	F-I	17	75	38
727	15-13	L-B	F-L	33	75	133	767	16-2	M-YB	F-L	50	50	122	807	16-42	M-B	F-I	33	100	75
728	15-14	GO	F-L	133	63	146	768	16-3	M-YB	F-L	33	75	50	808	16-43	M-B	M-L	17	75	75
729	15-15	GO	F-L	33	75	208	769	16-4	L-B	M-L	50	63	50	809	16-44	M-B	M-L	17	75	38
730	15-16	L-B	BIF	17	75	146	770	16-5	L-B	M-L	17	63	50	810	16-45	L-B	M-L	17	88	50
731	15-17	L-B	F-L	467	75	146	771	16-6	L-B	M-L	33	50	50	811	16-46	L-B	F-L	33	88	63
732	15-18	L-B	BIF	160	63	89	772	16-7	L-B	F-L	33	50	133	812	16-47	L-B	M-L	17	75	75
733	15-19	L-B	BIF	33	75	146	773	16-8	L-B	F-L	17	50	133	813	16-48	L-B	M-L	33	88	75
734	15-20	L-B	F-L	33	63	111	774	16-9	L-B	F-L	17	50	146	814	16-49	L-B	M-L	33	75	75
735	15-21	L-B	BIF	17	63	111	775	16-10	L-B	F-L	33	38	111	815	16-50	L-B	M-L	17	75	19
736	15-22	P-YB	F-I	33	50	89	776	16-11	GO	F-L	33	38	50	816	16-51	L-B	M-L	33	50	28
737	15-23	P-YB	F-I	17	38	75	777	16-12	L-B	F-L	17	38	50	817	17-1	M-YB	M-L	67	75	28
738	15-24	P-YB	F-I	33	50	133	778	16-13	L-B	F-L	17	50	75	818	17-2	M-YB	M-L	33	63	19
739	15-25	GO	F-I	17	38	111	779	16-14	L-B	F-L	300	50	133	819	17-3	M-B	M-L	50	75	19
740	15-26	GO	F-I	40	38	111	780	16-15	L-B	F-L	33	38	133	820	17-4	M-YB	F-L	17	63	38
741	15-27	P-YB	F-I	33	38	111	781	16-16	L-B	F-L	33	38	122	821	17-5	L-B	F-L	17	200	19
742	15-28	GO	F-I	33	38	75	782	16-17	L-B	BIF	17	38	89	822	17-6	M-B	F-L	33	75	19
743	15-29	M-B	M-L	50	50	146	783	16-18	P-YB	F-I	33	50	111	823	17-7	M-B	F-L	17	75	19
744	15-30	M-B	F-L	67	50	187	784	16-19	P-YB	F-I	17	50	133	824	17-8	D-B	F-L	33	63	28
745	15-31	L-B	M-L	17	50	111	785	16-20	P-YB	F-I	33	38	146	825	17-9	L-B	F-L	33	75	47
746	15-32	L-B	M-L	20	50	25	786	16-21	P-YB	F-I	50	38	75	826	17-10	M-YB	F-L	40	63	56
747	15-33	D-B	M-L	17	63	208	787	16-22	P-YB	F-I	33	38	111	827	17-11	D-YB	F-L	17	25	19
748	15-34	D-B	F-L	17	50	135	788	16-23	P-YB	F-I	33	38	111	828	17-12	D-YB	F-L	29	38	28
749	15-35	D-B	F-L	33	63	111	789	16-24	P-YB	F-I	633	38	50	829	17-13	VP-0	F-L	43	13	19
750	15-36	D-B	M-L	33	63	111	790	16-25	VP-0	F-I	33	38	89	830	17-14	VP-0	F-L	14	25	38
751	15-37	M-RB	M-L	33	75	111	791	16-26	M-YB	M-L	67	38	50	831	17-15	P-YB	F-I	257	50	28
752	15-38	M-B	F-I	67	75	50	792	16-27	M-YB	M-L	3333	25	50	832	17-16	P-YB	F-I	29	50	38
753	15-39	M-B	F-I	17	75	1556	793	16-28	L-B	M-L	50	50	25	833	17-17	P-YB	F-I	14	38	28
754	15-40	M-B	F-I	233	75	50	794	16-29	M-B	M-L	33	75	63	834	17-18	P-YB	F-I	29	50	28
755	15-41	M-B	M-L	33	50	89	795	16-30	M-B	M-L	50	75	75	835	17-19	P-YB	F-I	14	38	47
756	15-42	M-B	M-L	1533	75	187	796	16-31	M-B	M-L	33	63	75	836	17-20	P-YB	F-I	29	38	38
757	15-43	M-B	M-L	33	50	146	797	16-32	D-RB	M-L	40	50	75	837	17-21	M-B	F-I	14	75	56
758	15-44	M-B	M-L	500	50	89	798	16-33	M-RB	M-L	33	50	50	838	17-22	M-B	M-L	29	75	66
759	15-45	M-B	M-L	33	75	75	799	16-34	D-RB	M-L	17	88	38	839	17-23	D-YB	M-L	14	63	38
760	15-46	M-B	M-L	17	100	111	800	16-35	D-RB	M-L	33	75	89	840	17-24	D-YB	M-L	14	63	47

AREA E

NO.	SP-NO	COLOR	ROCK	AU (PPB)	SB (PPM)	AS (PPM)	NO.	SP-NO	COLOR	ROCK	AU (PPB)	SB (PPM)	AS (PPM)	NO.	SP-NO	COLOR	ROCK	AU (PPB)	SB (PPM)	AS (PPM)
841	17-25	D-YB	F-L	14	50	47	881	18-14	G0	F-L	17	38	19	921	19-3	D-B	F-I	33	25	38
842	17-26	M-B	M-L	14	75	38	882	18-15	G0	F-L	10L	75	28	922	19-4	D-YB	F-I	17	25	19
843	17-27	M-B	M-L	43	75	47	883	18-16	M-B	F-L	17	63	19	923	19-5	P-YB	F-I	67	25	38
844	17-28	M-B	M-L	14	88	38	884	18-17	M-B	F-L	17	63	19	924	19-6	P-YB	F-I	33	38	38
845	17-29	M-B	M-L	14	50	47	885	18-18	M-B	F-L	33	50	19	925	19-7	P-YB	F-I	167	25	19
846	17-30	L-B	M-L	14	75	56	886	18-19	M-B	F-L	17	63	19	926	19-8	P-YB	F-I	17	38	19
847	17-31	M-B	M-L	14	125	19	887	18-20	M-B	F-L	33	75	28	927	19-9	P-YB	F-I	33	13	47
848	17-32	M-B	M-L	10L	88	28	888	18-21	M-B	F-L	17	63	19	928	19-10	P-YB	F-L	33	13	19
849	17-33	M-B	M-L	10L	75	47	889	18-22	M-B	M-L	43	63	28	929	19-11	P-YB	F-L	333	25	38
850	17-34	D-RB	M-L	10L	63	38	890	18-23	M-B	M-L	29	50	19	930	19-12	P-YB	F-L	233	38	47
851	17-35	D-RB	M-L	10L	100	56	891	18-24	M-B	M-L	43	38	19	931	19-16	M-B	F-L	217	50	38
852	17-36	D-RB	M-L	10L	100	56	892	18-25	M-YB	M-L	57	38	19	932	19-17	M-YB	F-L	33	63	47
853	17-37	L-B	M-L	10L	75	47	893	18-26	M-YB	M-L	14	50	28	933	19-18	M-B	F-L	300	63	38
854	17-38	L-B	M-L	14	50	38	894	18-27	M-B	M-L	14	75	19	934	19-19	M-B	F-L	17	63	19
855	17-39	M-B	M-L	14	75	38	895	18-28	M-B	M-L	14	50	28	935	19-20	M-YB	F-L	67	50	47
856	17-40	D-B	M-L	14	88	56	896	18-29	M-B	M-L	29	50	28	936	19-21	L-B	F-L	83	50	38
857	17-41	D-B	M-L	14	30	38	897	18-30	M-B	M-L	14	63	19	937	19-22	M-B	M-L	17	38	38
858	17-42	M-B	F-I	14	40	56	898	18-31	M-B	M-L	10L	63	28	938	19-23	P-YB	M-L	17	50	19
859	17-43	D-YB	M-L	14	75	38	899	18-32	M-B	M-L	10L	50	38	939	19-24	M-YB	M-L	17	25	28
860	17-44	M-B	M-L	29	100	56	900	18-33	M-B	M-L	29	63	19	940	19-25	M-B	M-L	33	38	47
861	17-45	M-YB	M-L	14	75	28	901	18-34	M-B	M-L	14	75	19	941	19-26	D-B	M-L	167	38	38
862	17-46	M-B	M-L	14	75	38	902	18-35	D-RB	M-L	14	38	28	942	19-27	M-YB	M-L	17	38	47
863	17-47	L-B	F-L	14	75	38	903	18-36	M-B	M-L	29	38	38	943	19-28	M-YB	M-L	33	38	38
864	17-48	L-B	M-L	14	63	19	904	18-37	M-B	M-L	14	38	47	944	19-29	L-B	M-L	50	38	38
865	17-49	L-B	M-L	14	50	19	905	18-38	M-B	M-L	29	63	28	945	19-30	M-B	M-L	50	63	28
866	17-50	L-B	M-L	14	50	47	906	18-39	M-B	M-L	86	50	28	946	19-31	M-B	M-L	17	38	38
867	17-51	L-B	M-L	10L	125	56	907	18-40	M-B	M-L	29	75	38	947	19-32	M-B	M-L	35	88	38
868	18-1	M-B	M-L	14	63	75	908	18-41	M-B	M-L	14	75	28	948	19-33	M-RB	M-L	17	50	19
869	18-2	M-B	M-L	17	63	47	909	18-42	M-B	M-L	33	75	47	949	19-34	M-RB	M-L	17	50	28
870	18-3	M-B	F-I	17	25	38	910	18-43	M-B	M-L	33	63	38	950	19-35	D-B	M-L	33	50	56
871	18-4	P-YB	F-I	17	13	38	911	18-44	M-B	M-L	17	50	47	951	19-36	M-B	M-L	50	63	38
872	18-5	P-YB	F-I	10L	13	28	912	18-45	M-B	M-L	10L	50	38	952	19-37	M-B	M-L	17	50	38
873	18-6	P-YB	F-I	17	13	38	913	18-46	D-YB	M-L	33	63	38	953	19-38	M-B	M-L	17	63	38
874	18-7	P-YB	F-I	17	13	28	914	18-47	M-YB	M-L	33	63	38	954	19-39	D-RB	M-L	17	38	28
875	18-8	P-YB	F-I	33	13	38	915	18-48	M-YB	M-L	17	63	38	955	19-40	M-B	M-L	17	63	19
876	18-9	P-YB	F-I	17	25	19	916	18-49	D-B	M-L	167	50	38	956	19-41	M-RB	M-L	17	50	47
877	18-10	P-YB	F-L	10L	25	19	917	18-50	L-B	M-L	33	50	94	957	19-42	M-B	M-L	33	50	38
878	18-11	P-YB	F-L	17	50	38	918	18-51	L-B	M-L	33	75	56	958	19-43	M-B	M-L	17	50	38
879	18-12	P-YB	F-L	10L	50	47	919	19-1	L-B	M-L	50	63	47	959	19-44	D-YB	M-L	17	50	38
880	18-13	P-YB	F-L	17	50	19	920	19-2	L-B	M-L	17	50	38	960	19-45	D-YB	M-L	17	50	38



AREA E

NO.	SP-NO	COLOR	ROCK	AU (PPB)	SB (PPM)	AS (PPM)	NO.	SP-NO	COLOR	ROCK	AU (PPB)	SB (PPM)	AS (PPM)	NO.	SP-NO	COLOR	ROCK	AU (PPB)	SB (PPM)	AS (PPM)
961	19-46	D-B	M-L	33	50	38	1001	20-35	D-B	M-L	33	75	28	1041	21-24	P-YB	M-L	33	75	19
962	19-47	D-B	M-L	17	50	38	1002	20-36	D-B	M-L	17	100	38	1042	21-25	L-B	M-L	17	75	19
963	19-48	M-YB	M-L	17	63	48	1003	20-37	M-B	M-L	50	100	19	1043	21-26	L-B	M-L	33	75	28
964	19-49	L-B	M-L	17	63	56	1004	20-38	M-B	M-L	33	75	28	1044	21-27	L-B	F-L	33	75	28
965	19-50	L-B	M-L	17	63	28	1005	20-39	M-RB	M-L	67	125	19	1045	21-28	GO	F-L	17	50	19
966	19-51	M-B	M-L	17	50	28	1006	20-40	D-B	M-L	33	100	38	1046	21-29	L-B	F-L	33	113	19
967	20-1	L-B	M-L	17	63	127	1007	20-41	M-B	M-L	17	88	38	1047	21-30	L-B	F-L	17	75	19
968	20-2	L-B	M-L	33	63	75	1008	20-42	M-B	M-L	17	88	28	1048	21-31	L-B	F-L	50	75	38
969	20-3	L-B	M-L	40	75	75	1009	20-43	M-B	M-L	33	88	28	1049	21-32	M-YB	F-L	33	88	38
970	20-4	M-YB	M-L	40	75	38	1010	20-44	M-B	M-L	17	88	38	1050	21-33	L-B	PHY	17	88	38
971	20-5	M-YB	F-I	60	50	38	1011	20-45	M-B	M-L	17	88	28	1051	21-34	L-B	PHY	33	88	47
972	20-6	M-YB	F-I	40	50	38	1012	20-46	M-B	M-L	33	88	38	1052	21-35	L-B	F-L	17	88	28
973	20-7	P-YB	F-I	40	50	28	1013	20-47	M-B	M-L	50	113	47	1053	21-36	L-B	F-L	33	75	38
974	20-8	P-YB	F-I	80	50	47	1014	20-48	M-B	M-L	33	88	19	1054	21-37	P-YB	BIF	33	38	38
975	20-9	P-YB	F-I	40	50	38	1015	20-49	M-B	M-L	33	88	38	1055	21-38	P-YB	F-L	33	25	28
976	20-10	P-YB	F-L	20	25	38	1016	20-50	M-B	M-L	17	75	19	1056	21-39	P-YB	PHY	17	50	38
977	20-11	P-YB	F-L	20	50	38	1017	20-51	L-B	M-L	33	75	28	1057	21-40	P-YB	F-L	33	38	38
978	20-12	P-YB	F-L	40	25	19	1018	21-1	M-YB	M-L	50	100	38	1058	21-41	P-YB	F-L	17	25	19
979	20-13	P-YB	F-L	20	25	28	1019	21-2	M-B	M-L	17	100	38	1059	21-42	P-YB	BIF	33	38	38
980	20-14	D-YB	BIF	40	50	38	1020	21-3	M-B	M-L	33	75	19	1060	21-43	P-YB	F-I	33	25	19
981	20-15	P-YB	M-L	140	50	38	1021	21-4	M-B	M-L	33	100	19	1061	21-44	GO	F-I	33	25	38
982	20-16	L-B	PHY	40	25	28	1022	21-5	D-B	M-L	33	113	19	1062	21-45	P-YB	F-I	50	38	19
983	20-17	P-B	F-L	60	25	38	1023	21-6	M-RB	M-L	17	113	19	1063	21-46	L-B	F-I	50	100	38
984	20-18	L-B	F-L	40	50	19	1024	21-7	M-RB	M-L	17	113	28	1064	21-47	M-YB	M-L	67	63	47
985	20-19	L-B	F-L	20	50	19	1025	21-8	L-B	M-L	33	113	19	1065	21-48	M-YB	M-L	33	75	56
986	20-20	L-B	F-L	40	50	28	1026	21-9	D-B	M-L	17	113	28	1066	21-49	L-B	M-L	33	75	47
987	20-21	L-B	F-L	40	50	38	1027	21-10	D-B	M-L	33	113	28	1067	21-50	L-B	M-L	17	88	47
988	20-22	M-B	F-L	20	50	19	1028	21-11	D-B	M-L	33	125	19	1068	21-51	L-B	M-L	33	75	56
989	20-23	L-B	M-L	17	50	38	1029	21-12	M-B	M-L	33	88	28	1069	22-1	D-B	M-L	33	100	38
990	20-24	M-B	M-L	10L	50	28	1030	21-13	L-B	M-L	17	88	19	1070	22-2	D-B	M-L	50	75	47
991	20-25	L-B	M-L	10L	75	28	1031	21-14	M-RB	M-L	33	100	28	1071	22-3	M-B	M-L	17	75	19
992	20-26	M-B	M-L	10L	100	19	1032	21-15	M-B	M-L	17	125	19	1072	22-4	M-B	M-L	33	75	47
993	20-27	M-B	M-L	17	100	28	1033	21-16	M-B	M-L	50	113	19	1073	22-5	M-B	M-L	17	100	47
994	20-28	M-B	M-L	33	100	38	1034	21-17	D-RB	M-L	33	125	19	1074	22-6	M-RB	M-L	33	75	38
995	20-29	D-RB	M-L	50	113	28	1035	21-18	D-RB	M-L	17	125	19	1075	22-7	M-RB	M-L	467	75	38
996	20-30	D-RB	M-L	17	100	28	1036	21-19	M-B	M-L	33	63	19	1076	22-8	D-B	M-L	33	100	19
997	20-31	D-RB	M-L	33	75	19	1037	21-20	M-B	M-L	33	88	19	1077	22-9	D-B	M-L	17	88	19
998	20-32	D-RB	M-L	50	88	38	1038	21-21	M-B	M-L	33	88	19	1078	22-10	M-B	M-L	33	113	19
999	20-33	M-B	M-L	33	88	38	1039	21-22	M-B	M-L	17	100	28	1079	22-11	M-B	M-L	50	100	28
1000	20-34	D-RB	M-L	17	88	38	1040	21-23	M-YB	M-L	17	75	19	1080	22-12	M-B	M-L	33	113	28

AREA E

NO.	SP-NO	COLOR	ROCK	AU (PPB)	SB (PPM)	AS (PPM)	NO.	SP-NO	COLOR	ROCK	AU (PPB)	SB (PPM)	AS (PPM)	NO.	SP-NO	COLOR	ROCK	AU (PPB)	SB (PPM)	AS (PPM)
1081	22-13	M-B	M-L	17	113	38	1121	23-2	GO	F-L	17	88	38	1161	23-42	P-YB	M-L	20	38	19
1082	22-14	M-B	M-L	33	88	38	1122	23-3	M-YB	F-L	17	75	47	1162	23-43	P-YB	M-L	40	50	28
1083	22-15	M-B	M-L	17	75	19	1123	23-4	M-YB	F-L	17	75	47	1163	23-44	P-YB	M-L	40	38	38
1084	22-16	M-B	M-L	33	100	19	1124	23-5	M-YB	F-L	33	50	47	1164	23-45	P-YB	M-L	20	50	19
1085	22-17	D-RB	M-L	17	125	28	1125	23-6	M-YB	F-L	33	25	38	1165	23-46	P-YB	M-L	40	50	19
1086	22-18	D-RB	M-L	17	125	56	1126	23-7	M-B	F-L	1200	50	38	1166	23-47	GO	M-L	20	38	38
1087	22-19	M-YB	M-L	33	75	38	1127	23-8	M-B	M-L	33	50	28	1167	23-48	N-YB	M-L	10L	75	38
1088	22-20	M-B	M-L	17	75	75	1128	23-9	M-YB	M-L	50	50	38	1168	23-49	L-B	M-L	40	100	75
1089	22-21	M-B	M-L	40	100	66	1129	23-10	M-B	M-L	33	63	38	1169	23-50	M-B	M-L	40	50	28
1090	22-22	M-YB	M-L	20	75	38	1130	23-11	M-RB	M-L	17	88	19	1170	23-51	GO	M-L	20	75	38
1091	22-23	M-YB	M-L	40	88	75	1131	23-12	M-RB	M-L	17	50	19	1171	24-1	L-B	F-L	40	50	38
1092	22-24	M-YB	F-L	20	100	66	1132	23-13	M-B	M-L	17	113	28	1172	24-2	L-B	F-L	60	50	38
1093	22-25	M-B	F-L	40	88	82	1133	23-14	M-B	M-L	17	113	19	1173	24-3	L-B	F-L	40	75	28
1094	22-26	M-B	F-L	40	75	28	1134	23-15	M-B	M-L	233	50	28	1174	24-4	M-YB	F-L	40	75	38
1095	22-27	M-B	F-L	60	100	38	1135	23-16	M-YB	M-L	33	100	28	1175	24-5	M-YB	F-L	40	50	19
1096	22-28	M-YB	F-L	20	75	38	1136	23-17	M-YB	M-L	17	75	19	1176	24-6	D-YB	F-L	60	63	19
1097	22-29	M-YB	F-L	40	75	56	1137	23-18	M-B	M-L	33	50	19	1177	24-7	M-YB	M-L	20	75	28
1098	22-30	GO	F-L	40	50	47	1138	23-19	M-B	M-L	17	75	19	1178	24-8	M-YB	M-L	60	75	28
1099	22-31	GO	PHY	20	50	38	1139	23-20	M-B	M-L	33	88	28	1179	24-9	M-B	M-L	160	100	19
1100	22-32	GO	PHY	40	50	38	1140	23-21	D-B	M-L	17	63	19	1180	24-10	L-B	M-L	40	50	38
1101	22-33	P-YB	F-L	20	75	28	1141	23-22	M-B	M-L	33	100	28	1181	24-11	L-B	M-L	40	75	38
1102	22-34	L-B	F-L	40	88	38	1142	23-23	DU-YB	M-L	33	88	19	1182	24-12	L-B	M-L	20	75	19
1103	22-35	M-YB	BIF	20	63	19	1143	23-24	DU-YB	M-L	17	75	28	1183	24-13	L-B	M-L	160	50	28
1104	22-36	P-YB	F-L	40	63	28	1144	23-25	M-B	M-L	33	100	19	1184	24-14	M-YB	M-L	40	75	19
1105	22-37	P-YB	F-L	40	38	38	1145	23-26	D-B	M-L	33	88	38	1185	24-15	M-B	M-L	40	75	19
1106	22-38	VP-0	PHY	40	50	19	1146	23-27	DU-YB	M-L	17	88	19	1186	24-16	M-B	M-L	20	75	19
1107	22-39	P-YB	BIF	40	88	38	1147	23-28	D-B	M-L	33	75	19	1187	24-17	M-B	M-L	20	75	19
1108	22-40	P-YB	BIF	20	63	28	1148	23-29	M-YB	M-L	17	75	19	1188	24-18	D-B	M-L	20	75	28
1109	22-41	P-YB	M-L	33	50	28	1149	23-30	P-YB	PHY	40	63	19	1189	24-19	M-B	M-L	40	88	28
1110	22-42	P-YB	M-L	17	50	19	1150	23-31	P-YB	F-L	20	63	19	1190	24-20	M-RB	M-L	80	63	19
1111	22-43	P-YB	M-L	17	75	28	1151	23-32	P-YB	F-L	40	50	19	1191	24-21	D-YB	M-L	60	88	19
1112	22-44	L-B	M-L	33	75	47	1152	23-33	GO	F-L	20	25	28	1192	24-22	D-YB	M-L	40	75	19
1113	22-45	M-YB	M-L	17	63	38	1153	23-34	GO	F-L	40	38	19	1193	24-23	M-B	M-L	80	75	19
1114	22-46	GO	M-L	10L	75	28	1154	23-35	GO	F-L	40	38	28	1194	24-24	L-B	M-L	60	63	28
1115	22-47	GO	M-L	10L	63	19	1155	23-36	P-YB	PHY	20	25	19	1195	24-25	M-B	M-L	40	75	28
1116	22-48	L-B	M-L	10L	50	28	1156	23-37	P-YB	F-L	60	25	28	1196	24-26	M-B	M-L	40	63	28
1117	22-49	M-B	M-L	17	100	38	1157	23-38	P-YB	BIF	40	75	19	1197	24-27	M-B	M-L	40	75	28
1118	22-50	M-B	M-L	33	100	28	1158	23-39	P-YB	BIF	80	50	19	1198	24-28	L-B	F-L	60	63	19
1119	22-51	L-B	M-L	50	100	38	1159	23-40	P-YB	M-L	40	50	19	1199	24-29	L-B	F-L	80	50	28
1120	23-1	GO	F-L	33	75	38	1160	23-41	P-YB	M-L	40	25	28	1200	24-30	VP-0	F-L	40	50	19

AREA E

NO.	SP-NO	COLOR	ROCK	AU (PPB)	SB (PPM)	AS (PPM)	NO.	SP-NO	COLOR	ROCK	AU (PPB)	SB (PPM)	AS (PPM)	NO.	SP-NO	COLOR	ROCK	AU (PPB)	SB (PPM)	AS (PPM)
1201	24-31	VP-0	F-L	40	38	19	1241	25-20	D-YB	M-L	80	50	64	1281	26-9	M-B	F-I	40	50	19
1202	24-32	P-YB	F-L	60	38	28	1242	25-21	D-YB	F-L	40	75	73	1282	26-10	M-B	M-L	60	50	28
1203	24-33	60	F-L	40	50	19	1243	25-22	L-B	F-L	80	50	19	1283	26-11	D-B	M-L	40	50	28
1204	24-34	60	F-L	60	50	19	1244	25-23	L-B	F-L	60	75	28	1284	26-12	D-B	M-L	40	75	19
1205	24-35	60	PHY	20	50	19	1245	25-24	P-YB	F-L	60	63	56	1285	26-13	L-B	M-L	40	50	19
1206	24-36	P-YB	BIF	320	38	19	1246	25-25	M-YB	F-L	40	50	47	1286	26-14	L-B	M-L	40	63	38
1207	24-37	P-YB	BIF	80	25	19	1247	25-26	L-B	F-L	40	50	19	1287	26-15	L-B	M-L	20	50	56
1208	24-38	P-YB	BIF	60	25	19	1248	25-27	L-B	F-L	60	38	19	1288	26-16	M-B	M-L	40	88	72
1209	24-39	P-YB	M-L	60	25	19	1249	25-28	L-B	F-L	40	38	38	1289	26-17	M-YB	M-L	40	88	91
1210	24-40	60	M-L	40	38	28	1250	25-29	L-B	F-L	80	50	38	1290	26-18	M-YB	M-L	20	50	109
1211	24-41	P-YB	M-L	20	25	28	1251	25-30	M-YB	F-L	60	25	47	1291	26-19	L-B	M-L	40	63	38
1212	24-42	P-YB	M-L	40	25	38	1252	25-31	M-YB	F-L	60	38	47	1292	26-20	P-YB	M-L	40	50	19
1213	24-43	P-YB	M-L	40	25	38	1253	25-32	L-B	F-L	40	25	28	1293	26-21	P-YB	F-L	40	63	19
1214	24-44	P-YB	M-L	40	25	47	1254	25-33	L-B	F-L	40	25	38	1294	26-22	N-B	F-L	60	63	19
1215	24-45	P-YB	M-L	20	25	28	1255	25-34	P-YB	F-L	40	38	38	1295	26-23	P-YB	F-L	40	50	38
1216	24-46	P-YB	M-L	40	25	56	1256	25-35	60	F-L	40	50	38	1296	26-24	P-YB	F-L	40	63	38
1217	24-47	P-YB	M-L	40	25	19	1257	25-36	60	BIF	160	38	47	1297	26-25	P-YB	F-L	60	63	19
1218	24-48	P-YB	M-L	60	25	38	1258	25-37	60	M-L	40	25	19	1298	26-26	P-YB	F-L	60	38	38
1219	24-49	P-YB	M-L	40	38	28	1259	25-38	P-YB	F-I	60	25	28	1299	26-27	P-YB	F-L	80	25	38
1220	24-50	D-YB	M-L	40	38	19	1260	25-39	P-YB	F-I	40	25	19	1300	26-28	P-YB	F-L	40	50	19
1221	24-51	P-YB	M-L	60	38	19	1261	25-40	P-YB	M-L	40	25	28	1301	26-29	L-B	F-L	60	50	28
1222	25-1	M-B	M-L	40	50	28	1262	25-41	60	M-L	80	25	28	1302	26-30	P-YB	F-L	60	63	28
1223	25-2	M-B	M-L	40	50	38	1263	25-42	60	M-L	40	50	19	1303	26-31	L-B	F-L	40	75	19
1224	25-3	L-B	M-L	40	50	38	1264	25-43	60	M-L	40	50	19	1304	26-32	P-YB	F-L	40	75	38
1225	25-4	L-B	M-L	160	50	38	1265	25-44	60	M-L	60	38	19	1305	26-33	L-B	F-L	40	50	56
1226	25-5	D-YB	M-L	80	50	28	1266	25-45	60	M-L	40	50	19	1306	26-34	L-B	F-L	60	50	19
1227	25-6	D-YB	M-L	40	63	19	1267	25-46	60	M-L	40	25	28	1307	26-35	P-YB	BIF	60	50	19
1228	25-7	M-B	M-L	40	50	19	1268	25-47	60	M-L	60	38	28	1308	26-36	P-YB	BIF	40	50	38
1229	25-8	M-B	M-L	60	50	28	1269	25-48	L-B	M-L	40	50	38	1309	26-37	P-YB	F-I	10	38	38
1230	25-9	D-B	M-L	40	50	28	1270	25-49	L-B	M-L	80	38	28	1310	26-38	VP-0	F-I	80	50	28
1231	25-10	D-B	F-I	60	50	28	1271	25-50	L-B	M-L	14	38	19	1311	26-39	60	F-I	10L	38	38
1232	25-11	D-B	M-L	40	38	56	1272	25-51	60	M-L	14	63	19	1312	26-40	VP-0	M-L	60	25	38
1233	25-12	D-B	M-L	100	75	47	1273	26-1	M-B	M-L	10L	38	28	1313	26-41	60	M-L	60	50	19
1234	25-13	M-YB	M-L	80	38	47	1274	26-2	M-B	M-L	40	63	28	1314	26-42	P-YB	M-L	40	63	19
1235	25-14	M-YB	M-L	60	38	19	1275	26-3	M-B	M-L	40	50	38	1315	26-43	P-YB	M-L	80	63	28
1236	25-15	M-YB	M-L	40	38	28	1276	26-4	D-YB	M-L	20	75	28	1316	26-44	60	M-L	40	50	38
1237	25-16	D-YB	M-L	240	25	38	1277	26-5	M-RB	M-L	40	75	19	1317	26-45	L-B	M-L	80	50	47
1238	25-17	M-YB	M-L	60	25	47	1278	26-6	M-B	M-L	40	25	9	1318	26-46	L-B	M-L	40	50	56
1239	25-18	M-B	M-L	80	63	56	1279	26-7	M-B	M-L	300	50	19	1319	26-47	L-B	M-L	60	38	19
1240	25-19	D-YB	M-L	140	50	56	1280	26-8	M-RB	M-L	40	75	38	1320	26-48	L-B	M-L	40	75	19

AREA E

NO.	SP-NO	COLOR	ROCK	AU (PPB)	SB (PPM)	AS (PPM)	NO.	SP-NO	COLOR	ROCK	AU (PPB)	SB (PPM)	AS (PPM)	NO.	SP-NO	COLOR	ROCK	AU (PPB)	SB (PPM)	AS (PPM)
1321	26-49	L-B	M-L	80	50	19	1361	27-38	P-YB	F-I	33	38	56	1401	28-27	L-B	F-L	33	38	19
1322	26-50	L-B	M-L	40	50	38	1362	27-39	P-YB	F-I	17	50	28	1402	28-28	L-B	F-L	17	50	28
1323	26-51	L-B	M-L	60	75	38	1363	27-40	P-YB	F-I	17	38	19	1403	28-29	L-B	F-L	33	38	38
1324	27-1	L-B	M-L	40	50	19	1364	27-41	P-YB	M-L	17	19	25	1404	28-30	L-B	F-L	50	38	47
1325	27-2	L-B	M-L	140	50	28	1365	27-42	M-YB	M-I	33	19	50	1405	28-31	GO	F-L	33	50	19
1326	27-3	L-B	M-L	60	63	38	1366	27-43	M-B	M-L	50	28	75	1406	28-32	GO	F-L	17	25	28
1327	27-4	L-B	M-L	40	75	47	1367	27-44	M-YB	BIF	1200	19	88	1407	28-33	GO	F-L	33	25	19
1328	27-5	L-B	M-L	40	63	19	1368	27-45	GO	M-L	33	47	63	1408	28-34	GO	BIF	17	50	19
1329	27-6	D-RB	M-L	40	75	19	1369	27-46	L-B	M-L	17	56	63	1409	28-35	GO	BIF	17	38	28
1330	27-7	D-RB	M-L	40	125	38	1370	27-47	L-B	M-L	17	38	75	1410	28-36	GO	F-I	33	38	19
1331	27-8	M-RB	M-L	20	113	47	1371	27-48	L-B	M-L	17	19	63	1411	28-37	P-YB	F-I	50	50	28
1332	27-9	M-RB	F-I	40	75	19	1372	27-49	L-B	M-L	17	28	50	1412	28-38	P-YB	F-I	33	25	19
1333	27-10	M-B	M-L	20	50	19	1373	27-50	M-YB	M-L	17	19	25	1413	28-39	P-YB	F-I	33	25	28
1334	27-11	L-B	M-L	40	50	19	1374	27-51	M-YB	M-L	17	28	38	1414	28-40	P-YB	M-L	17	25	28
1335	27-12	D-B	M-L	60	50	19	1375	28-1	M-YB	F-L	17	19	38	1415	28-41	P-YB	M-I	33	38	38
1336	27-13	P-YB	M-L	40	63	38	1376	28-2	L-B	M-L	17	28	38	1416	28-42	L-B	BIF	17	63	47
1337	27-14	L-B	M-L	40	50	56	1377	28-3	L-B	M-L	17	38	38	1417	28-43	L-B	M-L	33	75	19
1338	27-15	D-B	M-L	60	63	19	1378	28-4	L-B	M-L	33	47	50	1418	28-44	L-B	M-L	133	50	28
1339	27-16	L-B	M-L	40	63	28	1379	28-5	M-B	M-L	17	19	75	1419	28-45	GO	M-L	33	38	38
1340	27-17	M-B	M-L	40	63	19	1380	28-6	M-B	M-L	50	28	50	1420	28-46	GO	M-L	33	38	47
1341	27-18	M-B	M-L	60	50	28	1381	28-7	M-B	M-L	33	38	50	1421	28-47	L-B	M-L	667	63	19
1342	27-19	L-B	M-L	60	38	38	1382	28-8	D-B	M-L	17	47	50	1422	28-48	L-B	M-L	100	50	19
1343	27-20	GO	M-L	40	50	56	1383	28-9	M-B	M-L	100	19	25	1423	28-49	L-B	M-L	33	50	19
1344	27-21	GO	F-L	20	38	38	1384	28-10	M-B	M-L	33	38	50	1424	28-50	L-B	F-L	33	63	38
1345	27-22	GO	F-L	40	25	38	1385	28-11	M-B	M-L	17	19	38	1425	28-51	L-B	F-L	33	50	28
1346	27-23	M-YB	F-L	800	38	38	1386	28-12	M-B	F-I	33	56	50	1426	29-1	M-YB	F-L	33	63	28
1347	27-24	M-YB	F-L	40	38	9	1387	28-13	D-RB	M-L	33	19	63	1427	29-2	M-YB	F-L	33	63	19
1348	27-25	M-YB	F-L	120	38	19	1388	28-14	D-RB	M-L	50	28	63	1428	29-3	GO	F-L	33	50	47
1349	27-26	M-YB	F-L	67	50	19	1389	28-15	D-RB	M-L	50	28	50	1429	29-4	M-YB	M-L	17	50	38
1350	27-27	M-YB	F-L	33	63	19	1390	28-16	D-RB	M-L	33	38	50	1430	29-5	GO	M-L	33	38	28
1351	27-28	M-YB	F-L	33	50	38	1391	28-17	D-B	M-L	500	63	38	1431	29-6	GO	F-I	33	38	38
1352	27-29	L-B	F-L	33	50	19	1392	28-18	D-B	M-L	33	38	38	1432	29-7	L-B	M-L	33	38	38
1353	27-30	M-YB	F-L	50	75	19	1393	28-19	D-B	M-L	17	75	28	1433	29-8	L-B	M-L	33	38	47
1354	27-31	L-B	F-L	33	50	47	1394	28-20	D-YB	M-L	17	25	28	1434	29-9	M-B	M-L	17	50	38
1355	27-32	D-YO	F-L	17	50	82	1395	28-21	M-YB	F-L	33	25	56	1435	29-10	P-YB	M-L	33	38	47
1356	27-33	GO	F-L	17	38	19	1396	28-22	L-B	F-L	17	38	19	1436	29-11	P-YB	BIF	33	38	38
1357	27-34	GO	PHY	33	50	28	1397	28-23	L-B	F-L	67	38	38	1437	29-12	P-YB	BIF	17	25	40
1358	27-35	VP-0	BIF	17	38	38	1398	28-24	L-B	F-L	50	50	47	1438	29-13	VP-0	F-I	17	25	47
1359	27-36	VP-0	F-I	17	38	47	1399	28-25	L-B	F-L	50	38	56	1439	29-14	VP-0	F-I	33	25	38
1360	27-37	VP-0	F-I	33	25	56	1400	28-26	L-B	F-L	33	50	47	1440	29-15	VP-0	F-I	33	25	19

AREA E

NO.	SP-NO	COLOR	ROCK	AU (PPB)	SB (PPM)	AS (PPM)	NO.	SP-NO	COLOR	ROCK	AU (PPB)	SB (PPM)	AS (PPM)	NO.	SP-NO	COLOR	ROCK	AU (PPB)	SB (PPM)	AS (PPM)	
1441	29-16	GO	F-I	33	25	28	1481	30-5	L-B	M-L	17	50	19	1521	30-45	D-RB	M-L	167	75	38	
1442	29-17	GO	M-L	50	25	38	1482	30-6	L-B	M-L	17	25	19	1522	30-46	D-B	M-L	200	75	19	
1443	29-18	GO	BIF	17	25	47	1483	30-7	GO	M-L	33	25	28	1523	30-47	D-B	M-L	200	50	28	
1444	29-19	GO	BIF	33	25	38	1484	30-8	GO	M-L	17	50	19	1524	30-48	D-B	M-L	50	75	38	
1445	29-20	GO	BIF	33	38	38	1485	30-9	P-YB	M-L	33	38	28	1525	30-49	M-B	M-L	133	63	38	
1446	29-21	M-YB	BIF	17	50	28	1486	30-10	P-YB	M-L	50	50	28	1526	30-50	M-B	M-L	33	63	47	
1447	29-22	M-YB	BIF	33	50	28	1487	30-11	P-YB	M-L	17	25	19	1527	30-51	L-B	M-L	100	63	19	
1448	29-23	L-B	F-L	33	63	19	1488	30-12	P-YB	M-L	50	50	28								
1449	29-24	L-B	F-L	33	38	19	1489	30-13	D-YB	BIF	33	38	28								
1450	29-25	M-YB	F-L	17	50	19	1490	30-14	P-YB	M-L	33	25	28								
1451	29-26	M-YB	F-L	17	50	19	1491	30-15	P-YB	M-L	50	25	28								
1452	29-27	L-B	F-L	33	50	28	1492	30-16	P-YB	M-L	50	50	19								
1453	29-28	L-B	F-L	50	50	38	1493	30-17	L-B	M-L	33	50	19								
1454	29-29	M-YB	F-L	33	50	38	1494	30-18	L-B	M-L	17	50	28								
1455	29-30	L-B	F-L	17	38	47	1495	30-19	L-B	M-L	33	25	19								
1456	29-31	L-B	F-L	33	38	38	1496	30-20	L-B	M-L	50	38	38								
1457	29-32	M-YB	F-L	33	38	28	1497	30-21	L-B	M-L	33	38	28								
1458	29-33	L-B	F-L	17	38	19	1498	30-22	L-B	BIF	33	63	38								
1459	29-34	M-YB	M-L	33	38	19	1499	30-23	L-B	BIF	33	50	19								
1460	29-35	M-YB	M-L	17	38	28	1500	30-24	L-B	BIF	17	50	28								
1461	29-36	M-YB	M-L	17	38	38	1501	30-25	L-B	F-L	33	50	19								
1462	29-37	D-B	M-L	33	50	28	1502	30-26	L-B	F-L	33	75	28								
1463	29-38	L-B	M-L	33	50	19	1503	30-27	L-B	F-L	17	50	38								
1464	29-39	L-B	M-L	17	38	19	1504	30-28	L-B	F-L	1333	50	28								
1465	29-40	M-YB	M-L	17	38	28	1505	30-29	L-B	F-L	33	38	19								
1466	29-41	L-B	M-L	133	38	28	1506	30-30	L-B	F-L	17	25	19								
1467	29-42	M-YB	M-L	67	38	19	1507	30-31	L-B	F-L	33	25	28								
1468	29-43	L-B	M-L	33	38	38	1508	30-32	L-B	F-L	33	25	38								
1469	29-44	M-B	M-L	33	50	47	1509	30-33	L-B	F-L	233	38	19								
1470	29-45	M-B	M-L	17	50	19	1510	30-34	L-B	M-L	200	25	47								
1471	29-46	D-RB	M-L	100	63	19	1511	30-35	L-B	M-L	50	75	19								
1472	29-47	L-B	M-L	33	75	28	1512	30-36	L-B	M-L	133	75	28								
1473	29-48	D-B	M-L	33	63	19	1513	30-37	L-B	M-L	33	75	19								
1474	29-49	D-B	M-L	33	50	28	1514	30-38	D-RB	M-L	133	75	19								
1475	29-50	D-B	M-L	33	50	19	1515	30-39	L-B	M-L	300	50	19								
1476	29-51	L-B	M-L	33	63	28	1516	30-40	L-B	M-L	167	63	19								
1477	30-1	L-B	F-L	17	63	38	1517	30-41	L-B	M-L	133	50	28								
1478	30-2	L-B	F-L	33	75	28	1518	30-42	M-B	M-L	67	50	28								
1479	30-3	L-B	F-L	17	63	19	1519	30-43	D-RB	M-L	33	63	28								
1480	30-4	L-B	M-L	33	50	28	1520	30-44	D-RB	M-L	667	75	19								



付録 2. 調査地域鉱山・鉱徴地一覧

鉱山名	位置	地質		床	沿革・生産
		母岩	鉱質		
Dalny 鉱山	調査地域北部 Chakari 地区	Lower Greenstones 中 ( Bulawayan 層群 ) の Dalny-Delcia 断裂帯	NE-SW 系破砕帯に伴なり Stella, Turkois, Arlandzer 走向方向 8 Km の産金地帯 non Reef 型 Dalny 1,200m×1,000m×0.8m Pixy 600m×600m×<1.0m Arlandzer 600m×600m×<1.0m As WO <sub>3</sub> , Zn Cu を伴う	Dalny, Pixy	Falcon Mines 社 Venice と合わせて 350,000 t/年 採掘処理 鉱石品位は Arlandzer で 4~5g/t
Golden Valley 地区	Kadoma 北西方 15Km	Bulawayan Lower Greenstones 中	NNE-S SW 系石英脈型 Golden Valley, Patchway 鉱山など	35°-40°W 傾斜	
Glasgow 地区	Kadoma 北 10Km Lion Hill Stock の東	Lower Bulawayan 層群	石英脈型 珪長岩 / 緑色岩の境界		
Big Ben 地区			随伴元素 : Cu As Pb Sb		Rio Tinto of Zimbabwe 社 1966 年再開・現在閉山
Last Chance 地区	Whitwaters 岩体北西端	Lower Bulawayan 層群	岩相境界に平行な走向 初期変形によるへき開面に Co Ni Cu Pb Zn Sb を伴う	N~NNE	

鉱山名	位置	地質		床	沿革・生産
		母岩	鉱床		
Eiffel Flats 地区 Cam & Motor 鉱山	Kadoma 東部	Lower Bulawayan 普通堆積物と緑色岩の境界	断裂パターンはNE系初期断線とdragしゅう曲の交点に生成した石英脈As 随伴型石英脈E-W系, N-S系石英脈が深部で収れんする探掘量, 約20百万t, 平均品位 11g/t	1900年以來の代表的大鉱山 1960年, Lonrho からRTZが買収 1968年閉山 現在分析設備 広域探査チームのベースの役目を果たす 地表下約2,000m(海面下約1,000m)まで開発 生産では1923-1966年同国最大の金鉱山	
Scheelite King	Kadoma 西方12Km	Whitewaters 岩体の 破碎帯中	WO <sub>3</sub> , Mo からもなる石英脈 走向N70°E Au よりも後期生成	1908-1944年間断続的に操業 精鉱85t 生産	
Monastery	A地区	Lower Bulawayan	N78°W/44°N Pb Py を伴う石英脈	閉山 4.8g/t 10KgAu	
Rocky Blue		(Dacite / Basalt の境界)			
Minerva	A地区東部	Shamvaian 層群	周辺に Gabbro dike が発達	閉山 7.3g/t	
Cobhurst	A地区	Lower Bulawayan		" 10g/t	
Affaire	"	"		" 10.7g/t	
Umsweswe	"	"	Basalt/sericite-qtz schist 境界付近の bs 中	" 1945-55年精鉱96t WO <sub>3</sub>	
Impala	"	"	N78°E/40°S 幅<100cm	" 1931-63年7.8g/t 21Kg Au	
I.X.L.	"	"	N45°E/60°N 幅 140cm	" 8.6g/t 24Kg	
Geoge	"	"	N75°E/50°-70°S WO <sub>3</sub> ·Au·石英脈	" 1912-14年2.8g/t 23Kg	
Heroin	"	"	Pb Zn Cu 随伴 石英脈中の90cm 鉱化 走向300m	" 1927-42年 3g/t Au	
Rise Up	A地区西方	"		8.3KgAu	



鉱山名	位置	地質		沿革・生産
		地母岩	鉱床	
Green Valley		Lower Bulawayan	Granite dike NE系/NW系の交差部	4.5g/tAu
Kanyemba	Kadoma SSW15Km	"	NE軸(SWブランチ)背斜構造の頂部に石英脈胚胎最大幅1.5m Py Pb Cu が随伴	閉山 1906-1965年15.1g/t 6.7Kg
Venice 地区			What Cheer : 石英脈型 NE~Eの走向 As 深部で方解石脈	操業中 7.7g/t 3096Kg
Venice		Lower Bulawayan (What Cheer Formation)	Venice : E-W系 断裂破砕帯 NS石 英脈 礫岩 緑色岩 境界付近 Nando : 層状鉱化 As Py 225m×60m×30m <sup>3</sup> レベル規模 ハローは低品位 Au+Py±Po Pink-un : Nando 脈の上盤側	" 1908-1961年 5.6g/t 984Kg 1922-1965年までは 1.71g/t 700Kg 3.4g/t
Cricket	B 地区	Upper Bulawayan Felsic Formation	走向 N25W, 45W Py As Sb を伴う 走向 N60E, 30-40S 幅 1~5m の破砕帯 に As limonite calcite magnesite の鉱化 地表下 300m までは酸化帯	閉山 1917~50年 13.7g/t 523Kg
Gold Beetle Cato 鉱脈群			走向 N60W, 50S Shear zone 型? 石英細脈のストックワーク 幅 0~45cm 細脈は低品位 酸化帯の底部に Au の二次富化帯	" 2.8g/t 11.45 Kg 酸化帯をオーブンピット採掘 非酸化帯は未開発 3.7g/t 392.27Kg
One Step		Upper Bulawayan Felsic Formation の 緑色岩		

鉱山名	位置	地質		沿革・生産
		母岩	鉱床	
East Step	B地区	Upper Bulawayan Felsic Formation の 緑色岩	2つの走向系: NE 45° SE N 62° E の石英脈 幅100-150cm	深度45mまで開発
Cato		"	Scheelite-Stibnite 石英脈	1952年 1.42tの Scheelite生産
Challenge		"	珩長質貫入岩との接触部付近	10.7g/t 45Kg
Leonada		"	走向N-S E傾斜	11.9g/t 2.15Kg
Monarch		"		14.8g/t 13.59Kg
Union Jack				
Nellie			走向NE 傾斜70°SE	
Star			" SW	1941年 0.59Kg
Dan			" NS " E	1934-37年 4.2g/t 23.02Kg
Redan				7g/t 42.2 Kg
Cissy			緑色岩と珩長質岩との接触部 Asを伴う As Sb 随伴 難溶性鉱物	-30mまで採掘 10.3g/t 56.26Kg
Oro Bredo				-60mまで採掘 9.9g/t 96.42Kg
Rich Money			Sb 随伴	17.42Kg
Clover		Granite 中		
Ballarat			Cu 随伴	2.6g/t 153.4Kg
Maki Pashoz			含Stibnite 石英脈	
Anna			走向E-W 70-80S 幅60cm	
Mio Kento			走向N-S 幅60cm	
Austin				-15mまで採掘
Janet				-35mまで採掘
Iripo				6.4g/t 4.23Kg

鉱山名	位置	地		質		沿革・生産
		母岩	岩	鉱	床	
Cuba	C地区	Upper Bulawayan Maliyami Formation の安山岩		走向NE-SW 幅30cm Py Cp Po ±Sb Pb As が随伴鉱物, 元素 金は free gold		8.8g/t 26.9Kg  7.6g/t 50.24Kg 1924-42年 7.5g/t 32.41Kg 1941-45年 16.4g/t 15.33Kg 閉山 1914-56年 8.5g/t 301.1Kg -90mまで開発
Urnietati	"			走向E-W N-Sの二系 幅30~100cm Po Py As を伴う 幅40cmの石英脈		
Old Crick	"			走向N40°E, 52°SE As Po 随伴 90cm×1.2m(幅)×>90cm		
Rose Marie	"					
Somerset	"					
Cuprum	D地区	Kwekwe 超苦鉄質岩体		銅鉱床		正確な位置不明
Rosstach		"		"		
Mac Angus		Upper Bulawayan 縞状鉄岩		含金石英脈		5.4g/t 85.08 Kg
Kwekwe		Kwekwe Gneiss		Trial, Atlanta, Alley, Napini, Yellow- Snake, Medway, Gamecock, Lonely Valley Swann など, 走向は Yellow Snake で E-W Medway で N-NW, 脈幅 40-100cm		4.0~15g/t 生産量は Atlanta の 3.57Kg Au が最大 いずれも地表下 100m 以下の浅 所開発
Gneiss 中の鉱床群	"					
Globe & Phoenix	Kwekwe 市街地	Kwekwe 超苦鉄質岩体		主要鉱脈の走向 NNE-SSW その他 NNW, EWE, Globe 地区と Phoenix 鉱床群 よりな る Phoenix は 走向延長 200m 幅 1.2-2.5m		粗鉱 3,000t/月 3~5g/t 深度 1550m まで開発
Gaika	Kwekwe 市街地南西	"				現在ダンプ処理中

鉍石名	位置	地 質		沿 革 ・ 生 産
		母 岩	鉍 床	
Black Prince Elsa Unit	E地区 " Kwekwe 西方10Km	Shamvaian 層群砂岩	走向N35°W 30° 延長約100m 脈幅30~60cm	1986年閉山1977-86年15Kg/月 地表下240mまで開発
Bristol	Kwekwe 北方5Km	Upper Bulawayan 縞状鉄岩	走向NS 70°E 脈幅約1m 露頭部で40~50g/t	開発中
Riverlea	Kwekwe 西方4Km	Shamvaian 層群 礫岩~砂質堆積岩	Bell 鉍床, Riverlea 鉍床 後者は幅約2mのレンズ鉍床	Riverlea 稼動中 5~6g/t 30~36kg/月 地表下240mまで開発
Tiger Reef	Kwekwe 北西10Km	Shamvaian 層群 砂岩	走向NE-SW 85°NE 幅平均5m 走向延長350m	1920~40年34g/t 1980年 Lonrho 再開 3.5g/t 24kg/月

付録 3. 岩石薄片検鏡結果

Abbreviation

Primary Minerals

Ol : Olivine  
 Cpx : Clinopyroxene  
 Opx : Orthopyroxene  
 Ho : Hornblende  
 Mc : Muscovite  
 Bi : Biotite  
 Pl : Plagioclase  
 Kf : Potash feldspar  
 Qz : Quartz  
 Fe : Iron minerals

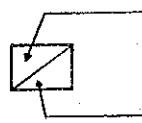
Secondary Minerals

Amp : Amphibole  
 Cal : Calcite  
 Chl : Chlorite  
 Sc : Sericite  
 Ab : Albite  
 Ep : Epidote  
 Tal : Talc  
 Ser : Serpentine  
 Qz : Quartz  
 Bi : Biotite  
 Pyr : Pyrophyllite  
 Cor : Cordierite

Rock Name

Hbd : Hornblendite  
 Spt : Serpentinite  
 GD : Granodiorite  
 Pyrt : Porphyrite  
 Qz dr: Quartz diorite  
 Tonal: Tonalite  
 Adm: Adamellite  
 Qz pyr: Quartz porphyry  
 Bs(lap)tf: Basaltic (lapilli) tuff  
 Inmd tf: Intermediate tuff  
 Fs lap tf: Felsic lapilli tuff  
 Congl: Conglomerate  
 Phyl : Phyllite  
 Sch : Schist

Symbol



No.1~No.38 Phenocryst  
 No.39~No.52 Rock fragment  
 No.1~No.38 Groundmass  
 No.39~No.52 Matrix

◎ abundant  
 ○ medium  
 • present  
 ? assumed

## Texture

por : porphyritic  
sbop : subophitic  
oph : ophitic  
hyalc: hyaloclastic  
int : intersertal  
pilo : pilotaxitic  
holo : holocrystalline  
eqg : equigranular  
poik : poikilitic  
amg : amygdaloidal  
hf : hornfels  
porbl: porpyroblastic

No.	Sample No.	Area	Rock Type	Primary Minerals										Secondary Minerals										Texture	Note
				Ol	Cpx	Opx	Hc	Mc	Bi	Pl	Kf	Qz	Fe	Amp	Cal	Ch	Sc	Ab	Ep	Ta	Qz	Bi	Ser		
1	Venice 10	Venice Mine	Basalt lava		⊙	⊙	⊙				⊙													por scoop	Xenocryst?
2	A50-20	A	Basalt lava		⊙	⊙	⊙				⊙													soop	
3	TH-8	A	Hbd		⊙	⊙	⊙				⊙													por	
4	C20-49	C	Basalt lava																					ang	
5	C31-48	C	Basalt lava																					hyal	
6	C11-3	C	Basalt lava		⊙	⊙	⊙				⊙													int	
7	E16-37	E	Basalt lava		⊙	⊙	⊙				⊙													int ang	
8	TH-68	C	Hbd								⊙													egg	
9	B7-13	B	Spilite ?																					int	
10	TH-65	C	Spilite ?		?	?	?																	int ang	
11	C30-32	C	Basalt		?	?	?																	int-pilo	
12	C16-3	C	Basalt																					int	
13	B5-4	B	Dolerite		⊙	⊙	⊙				⊙														Amp. Tremolite
14	D10-14	D	Dolerite		⊙	⊙	⊙				⊙													opt	
15	DAK-12	D	Dolerite																					holo egg	
16	DAK-8	D	Dolerite		⊙	⊙	⊙				⊙													holo egg	altered olivine
17	C25-45	C	Dolerite		⊙	⊙	⊙				⊙													oph	
18	TH-44	B	Dolerite		⊙	⊙	⊙				⊙													holo egg	
19	D50-16	D	Hbd																						Amp. Tremolite
20	D22-22	D	Hbd																					egg	
21	DAK-6	D	Spt																						
22	D1-23	D	Spt		?	?	?																		
23	D10-25	D	Spt																						
24	E15-17	E	Dacite lava																					por	
25	DAK-15	D	Bi-Ho-GD																					holo egg	
26	DAK-11	D	Bi-Gr																					holo egg	

No.	Sample No.	Area	Rock Type	Primary Minerals											Secondary Minerals										Texture	Note
				Ol	Cpx	Opx	Ho	Mc	Bi	Pl	Kf	Qz	Fe	Pyr	Cal	Ch	Sc	Ab	Ep	Tal	Qz	Bi	Cor			
27	TH-14	A	Bi-Qz-Pyrt																						holo por	Bi recrystallized
28	TH-21	A	Ozdr																						holo por	relict Cpx
29	TH-70	C	Ho-Tonal																						holo por	
30	E6-2	E	Ho-Tonal																							
31	Venice-11	A-B	Syenite																							
32	G-1	A-B	Ho-Bi-Adm																							
33	G-2	E	Ho-Bi-Tonal																							
34	C41-4	C	Qz-Pyr																							
35	A8-30	A	Qz-Pyr																							
36	E16-24	E	Qz-Pyr																							
37	E6-23	E	Qz-Pyr																							
38	TH-45	B	Qz-Pl-Pyr																							
39	C39-30	C	Bs lap tf																							
40	C37-33	C	Bs lap tf																							
41	C16-15	C	Bs lap tf																							
42	E5-8	E	Bs lap tf																							
43	E23-25	E	Bs tf																							
44	E13-1	E	Bs-Inrd tf																							
45	B17-4	B	Fs lap tf																							
46	TH-19	A	Greywacke																							
47	DAK-3	D	Congl																							
48	TH-13	A	Phyl																							
49	TH-34	A	Phyl																							
50	C37-20	C	Silt																							
51	TH-3	A	Sc-Qz-Sch																							
52	E20-13	E	Acid tf																							



付録 4. 鉍石研磨片検鏡結果

Abbreviation

Ore minerals

Au : Native gold

Py : Pyrite

Po : Pyrrhotite

As : Arsenopyrite

Bo : Bornite

Cc : Chalcocite

Cp : Chalcopyrite

Gn : Galena

Sp : Sphalerite

Tet : Tetrahedrite

Enr : Enargite

Hm : Hematite

Sample No.

G&P : Globe and Phoenix

EPMA test

△ qualitative analysis

○ quantitative analysis

□ composition image

Legend

◎ abundant

○ medium

• present

No.	Sample No.	Area / Mine	Ore Minerals											Texture	EPMA Test				
			Au	Py	Po	As	Bo	Cc	Cp	Gn	Sp	Tet	Enr			Him			
1	Dalny	Dalny Mine	○																
2	Pixy		○																
3	Stella		⊙																
4	Turkoi		⊙																
5	Unit-1	E	○																
6	Unit-2		○																
7	Rise Up	A	○															△ □	
8	Scheelite King	B	○																
9	New Topaz-1		○																△ ○
10	New Topaz-2		○																△ ○
11	Cato	B	○																
12	Riverlea		○																
13	Cuba Syndicate	C	○																
14	Cricket		○																
15	G&P-4-1	Globe & Phoenix Mine	○																△ ○ □
16	G&P-4-2		○																△ ○ □
17	G&P-17		○																△ ○ □
18	G&P-18		○																△ ○ □
19	G&P-19-1	C	○																△ ○ □
20	G&P-19-2		○																△ ○ □
21	Somerset-1	C	○																△ ○ □
22	Somerset-3		○																△ ○ □

\* Same as above

付録 5. X-線回折粉末法による分析結果

Abbreviation

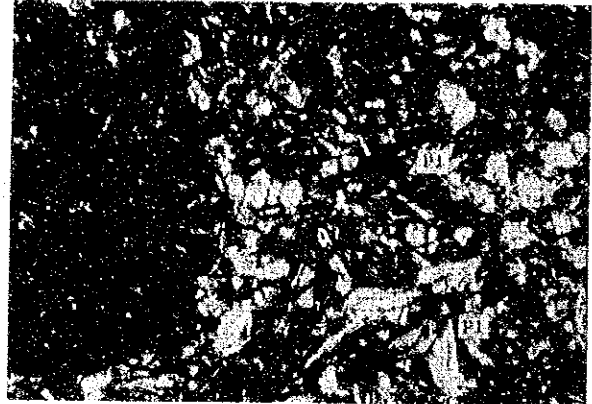
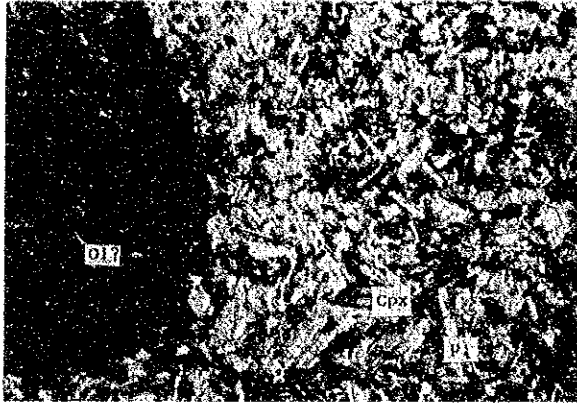
SHR	: Shear-zone
FW	: Footwall
RF	: Quartz reef (Quartz Vein)
HW	: Hanging wall
HW 6.5m	: 6.5m from hanging wall side of reef
PR-POR	: Pre-reef Porphyrite
EXM	: Extreme of ore body

Symbol

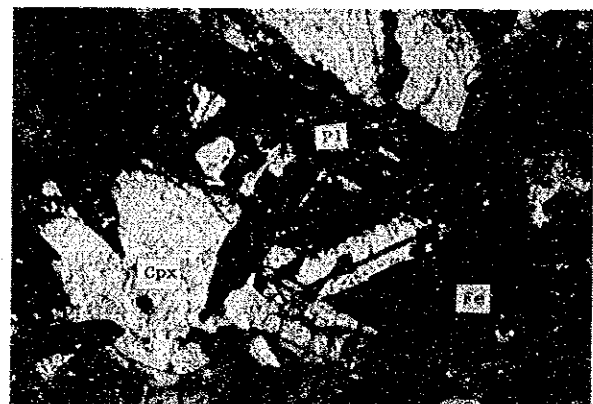
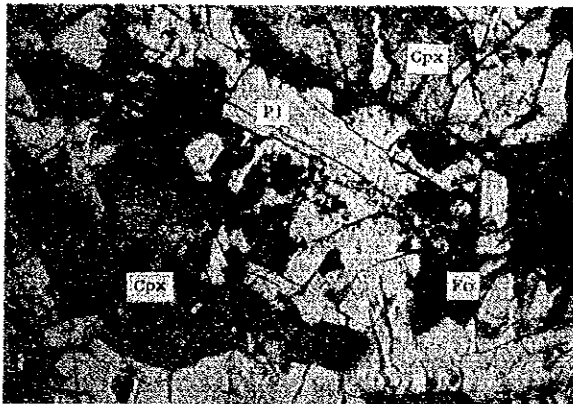
◎	abundant
○	medium
•	present
?	assumed

Alteration Mineral Sample No.		Quartz	Plagioclase	Albite	Amphibole	Pyroxene	Epidote	Sericite/Montmorillonite	Chlorite/Montmorillonite	Sericite	Chlorite	Kaolinite	Pyrophyllite	Talc	Calcite	Dolomite	Magnesite	Ankerite	Hematite	Limonite	Pyrite	Note
1	Bristol	⊙																				SHR
2	Globe & Phoenix	3 ⊙	•							•	•			•		○	•					FW
3	ditto	4 ⊙								•	•			•		⊙	•				•	RF
4	ditto	6 •									•			⊙		•	⊙					HW
5	ditto	8 •												•		•	⊙					HW
6	ditto	10 ⊙														•	⊙					FW
7	ditto	11 ⊙									•			⊙			⊙					HW 6.5m
8	ditto	12 ⊙												•		•	⊙					HW 4.0m
9	ditto	13 ⊙														⊙	⊙					HW 2.0m
10	ditto	14 ⊙														•	⊙					HW 1.0m
11	ditto	15 ⊙														•	⊙				•	HW
12	ditto	21 ⊙								•	•					⊙	⊙					FW
13	ditto	22 ⊙												•		⊙	⊙					FW 1.0m
14	Tiger Reef	1 ⊙								•	○					•						HW
15	ditto	2 ⊙		•						•	•					•					•	HW
16	ditto	3 ⊙		○						•	•					•	•					EXM
17	ditto	4 ⊙		•						•	•								?			HW
18	Venice	1 ⊙		○						•	•				•	•						PR-POR
19	ditto	2 ⊙		•						•	•				○	•			?			SHR
20	ditto	3 ⊙		•						•	○				•	○			?			SHR
21	ditto	4 ⊙								•	○				○							HW
22	ditto	5 ⊙								•	○				○							FW
23	ditto	6 ⊙								•	○				○						•	HW
24	ditto	7 ⊙								•	○				○						•	SHR
25	ditto	8 ⊙								•	•				○						•	SHR
26	ditto	9 ⊙								•	•				•							SHR
27	ditto	12 ⊙		•						•	•				⊙							RF
28	ditto	13 ○		•						•	○				○	•						HW
29	E 9-28	⊙										?	⊙									
30	E21-40	⊙								•												
31	E22-37	⊙										?	⊙									
32	E24-30	⊙										?	⊙									
33	E28-36	⊙								•												
34	E16-18	⊙								•			○									

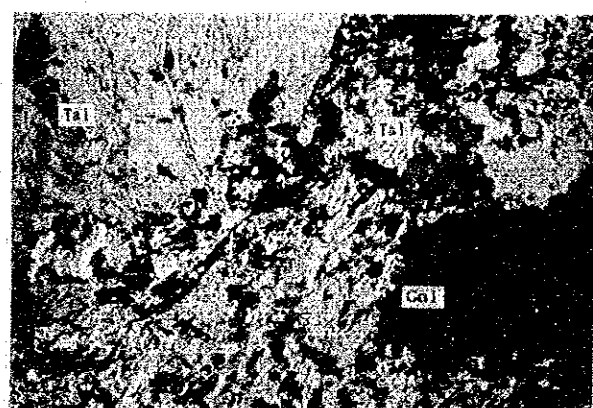
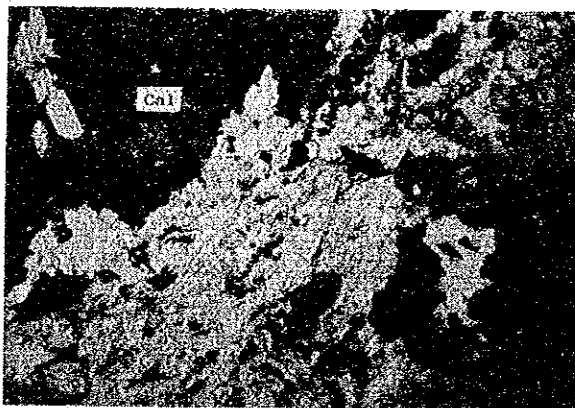
付録 6. 岩石薄片の顕微鏡写真



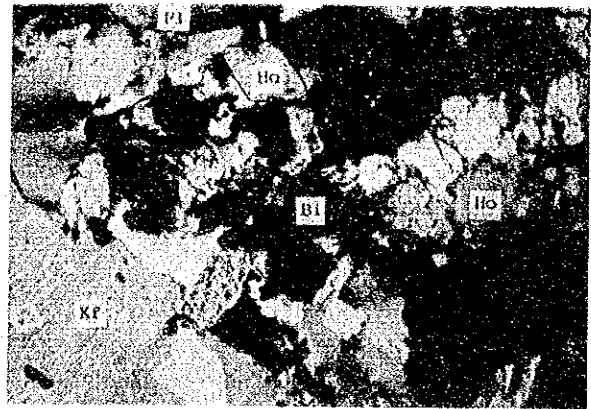
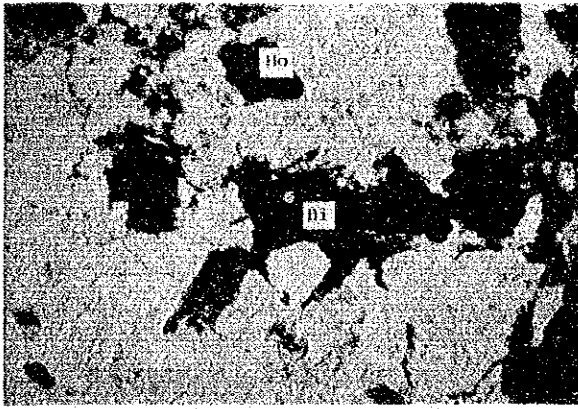
Sample No. : Venice-10      Open nicol      Crossed nicols  
 Locality : Venice Mine 6L  
 Rock name : (Olivine?) Basalt  
 Note : Subophitic texture with xenocryst of olivine(?)  
 0.5mm



Sample No. : DAK-8      Open nicol      Crossed nicols  
 Locality : 8km north of KweKwe  
 Rock name : Dolerite  
 0.5mm



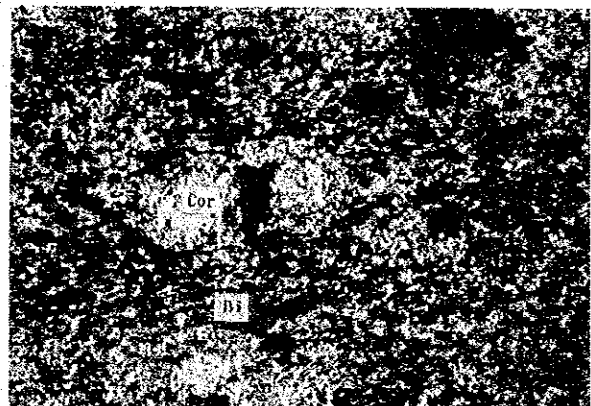
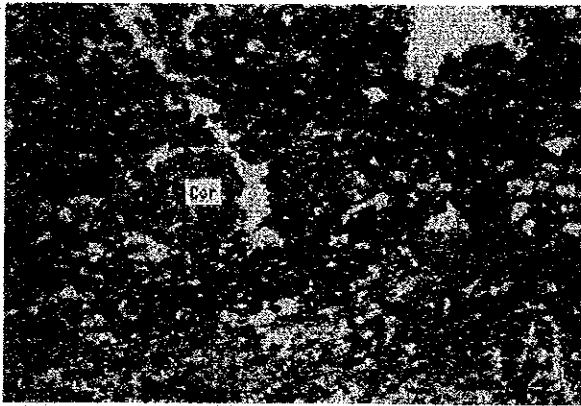
Sample No. : D50-16      Open nicol      Crossed nicols  
 Locality : Sherwood  
 Rock name : Carbonated Ultramafic rock  
 Note : Intensely replaced by calcite and talc  
 0.5mm



Sample No. : G-1                      Open nicol  
 Locality : 4km west of Venice Mine  
 Rock name : Adamellite  
 Note : K-feldspar predominant granitic rock

Crossed nicols

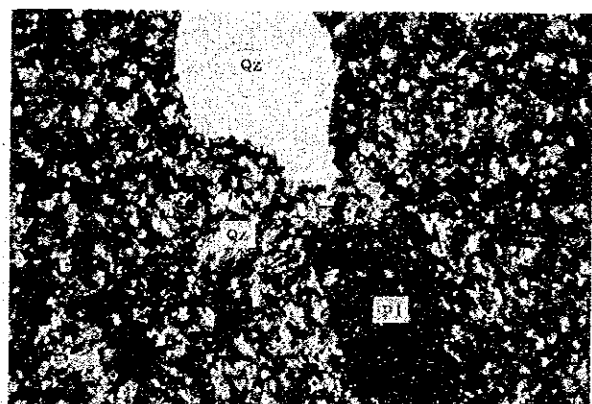
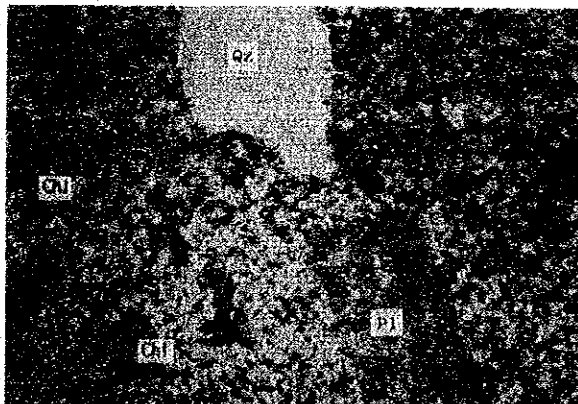
0.5mm



Sample No. : TH-13                      Open nicol  
 Locality : 16km southwest of Kadoma, A area  
 Rock name : Cordierite-Biotite-Sericite hornfels  
 (pelitic rock origin)

Crossed nicols

0.5mm



Sample No. : C41-4                      Open nicol  
 Locality : 10km west of Umniati power station, C area  
 Rock name : Quatz porphyry  
 Note : Quatz phenocryst shows coroded form

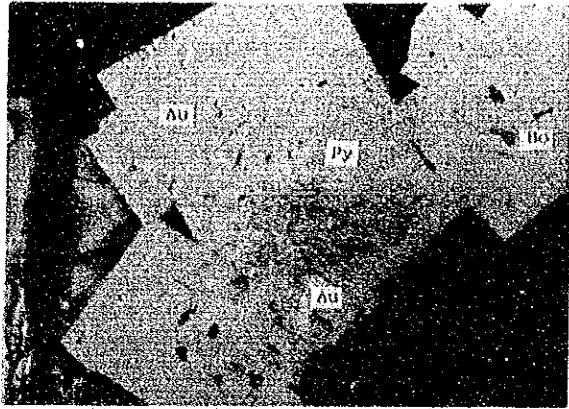
Crossed nicols

0.5mm



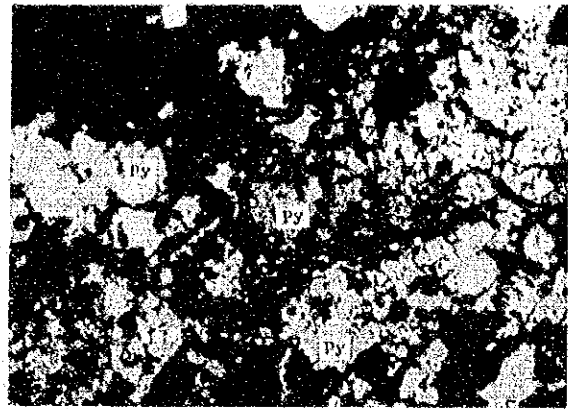


付録 7. 鈮石研磨片の顕微鏡写真



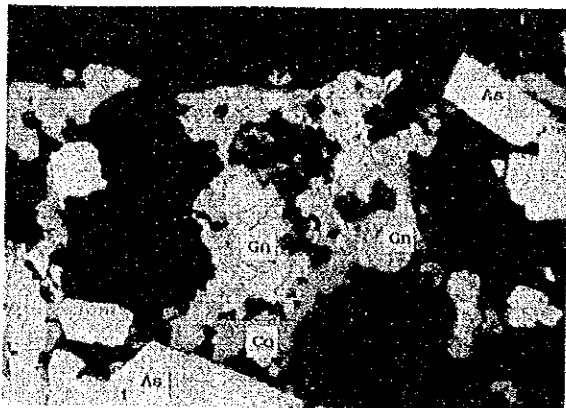
Sample No. : Pixy  
 Location : Dalny Mine  
 Note: Some small grains of native gold and bornite embedded in pyrite

Open nicol  
 0.1mm



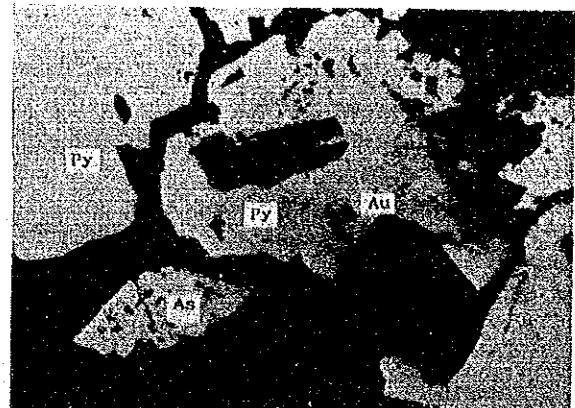
Sample No. : Stella  
 Location : Dalny Mine  
 Note: Pyrite showing framboidal texture in the center of the field

Open nicol  
 0.2mm



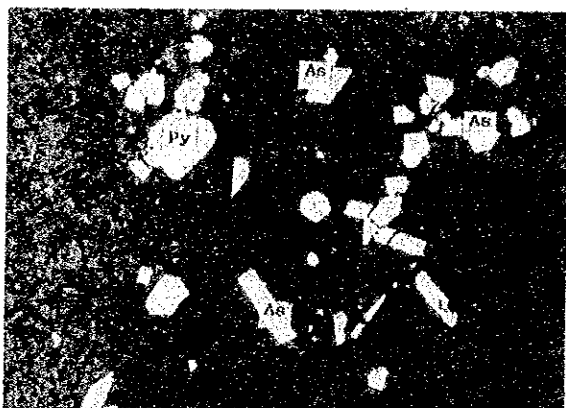
Sample No. : Unit-2  
 Location : Unit Mine  
 Note: Galena-Chalcocite intergrowth

Open nicol  
 0.1mm



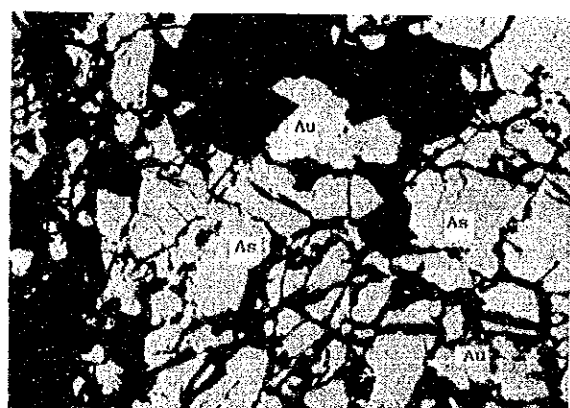
Sample No. : Rise-Up  
 Location : Rise-Up Mine  
 Note : Native gold enclosed in pyrite and along the crack

Open nicol  
 0.1mm



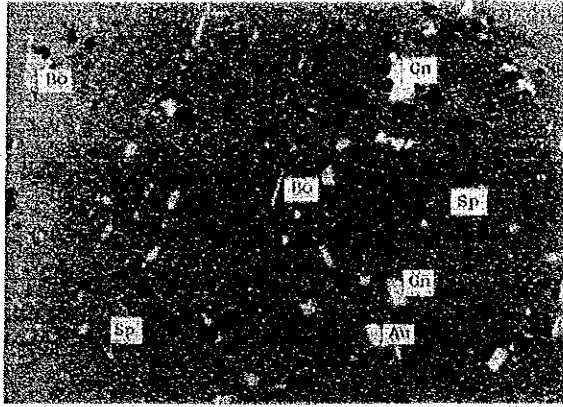
Sample No. : Cricket  
 Location : Cricket Mine  
 Note: Outstanding prismatic or hexagonal crystals of arsenopyrite

Open nicol  
 0.1mm

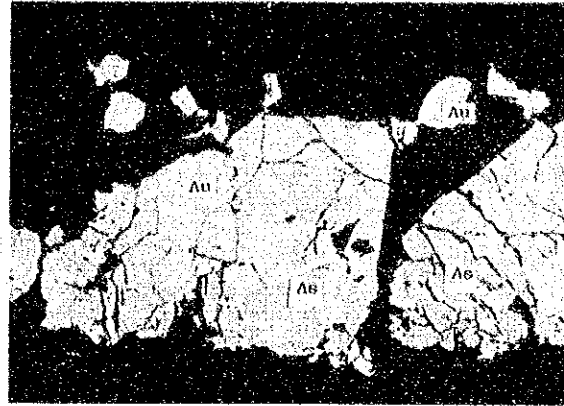


Sample No. : New Topaz-1-1  
 Location : New Topaz Mine  
 Note: Electrum contained in arsenopyrite in the form of grain or filling the cracks

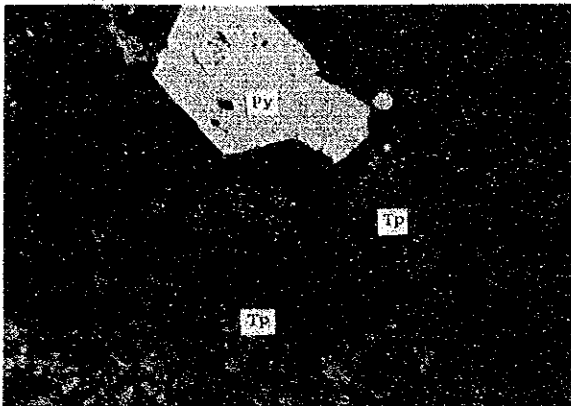
Open nicol  
 0.4mm



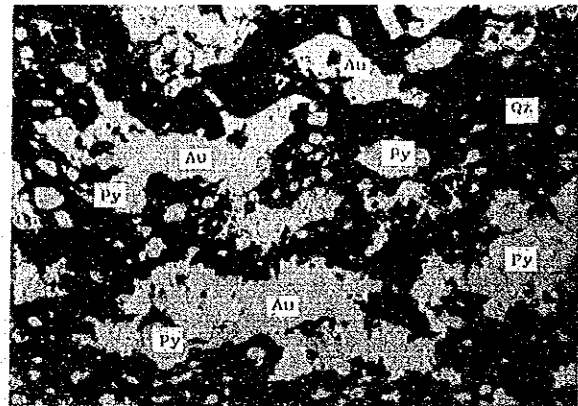
Open nicol  
 Sample No. : New Topaz-1-2 0.2mm  
 Locality : New Topaz Mine  
 Note: Dots of electrum, bornite and galena enclosed in sphalerite



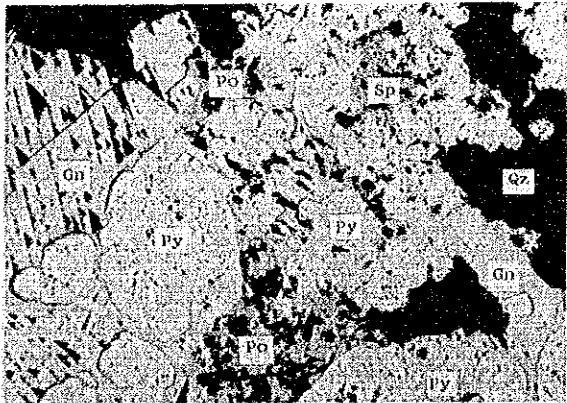
Open nicol  
 Sample No. : New Topaz-2 0.2mm  
 Locality : New Topaz Mine  
 Note: Electrum occurring in arsenopyrite and gangue quartz



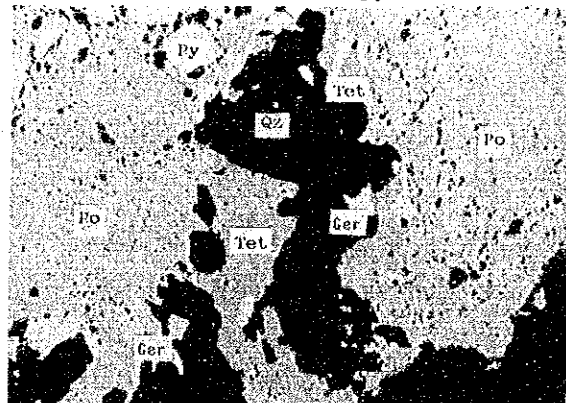
Open nicol  
 Sample No. : G&P4-1-1 0.1mm  
 Locality : Globe & Phoenix Mine  
 4 parallel 7L  
 Note: Euhedral pyrite enclosed by clusters of tripuhyite(Tp:FeSb<sub>2</sub>O<sub>6</sub>)



Open nicol  
 Sample No. : G&P4-2-1 0.4mm  
 Locality : Globe & Phoenix Mine  
 4 parallel 7L  
 Note: High grade gold ore  
 Native gold in the form of ameba associated with pyrite



Open nicol  
 Sample No. : G&P17 0.4mm  
 Locality : Globe & Phoenix Mine  
 Note: Pyrite, Pyrrhotite, sphalerite occurring in interstitial galena

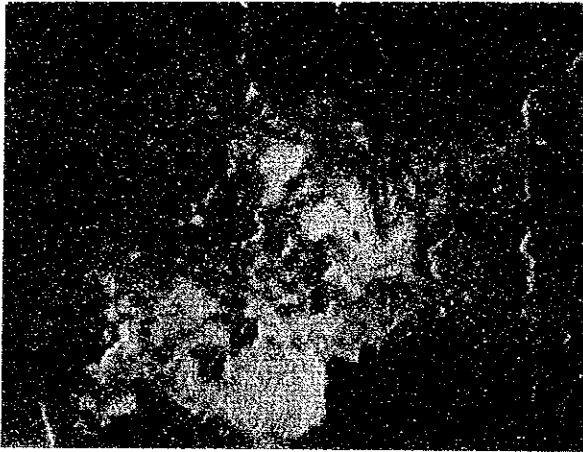


Open nicol  
 Sample No. : G&P-19-1 0.4mm  
 Locality : Globe & Phoenix Mine  
 Note: Tetrahedrite, Gersdorffite(Ger: (NiFeCo)AsS) occupying the rim of pyrrhotite



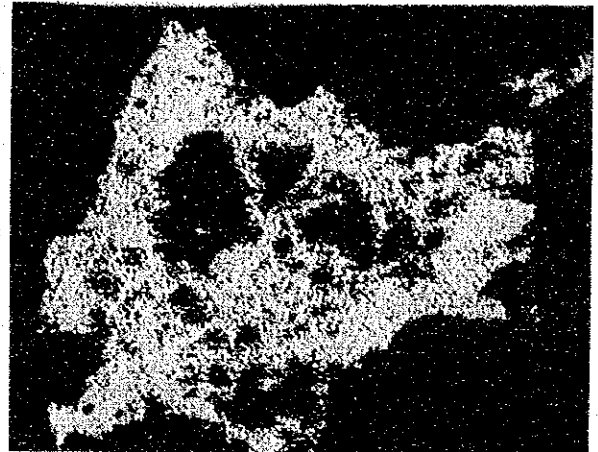
付録 8. EPMA面分析写真

Sample No. : Unit-2  
Location : Unit Mine  
Mineral : Chalcocite

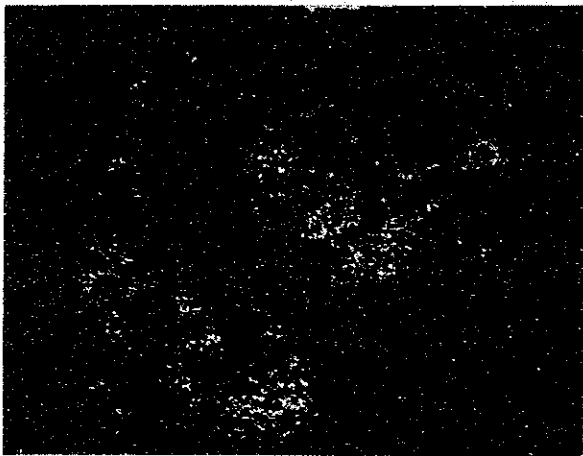


Compositional image

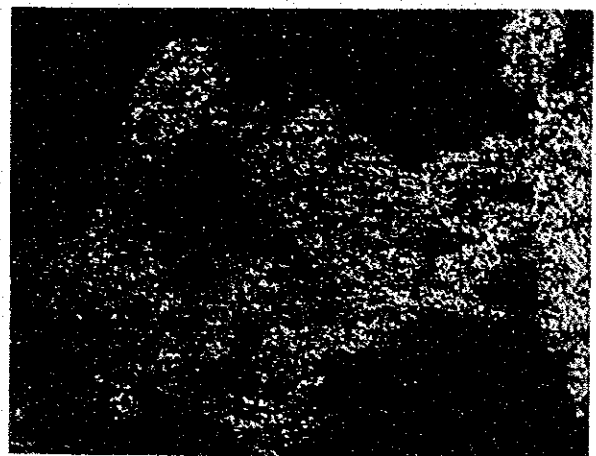
25 $\mu$



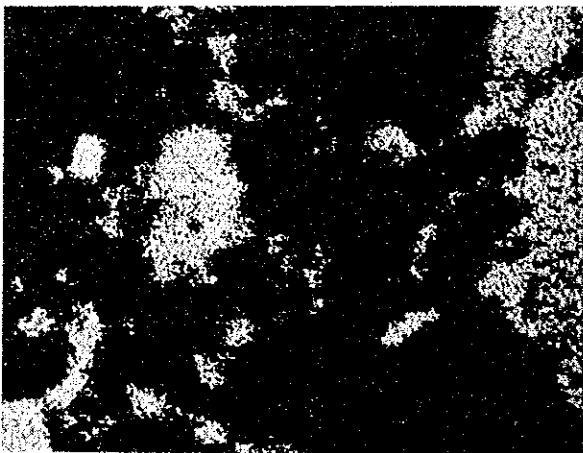
Cu K $\alpha$  X-ray image



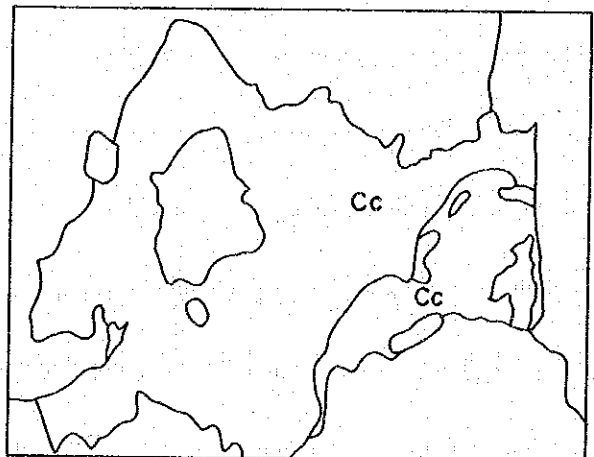
Pb M $\alpha$  X-ray image



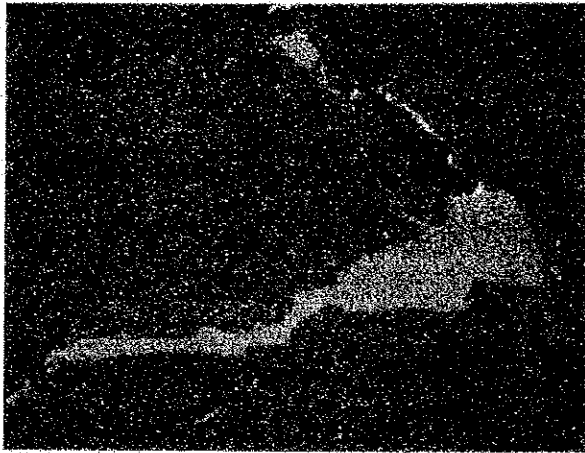
S K $\alpha$  X-ray image



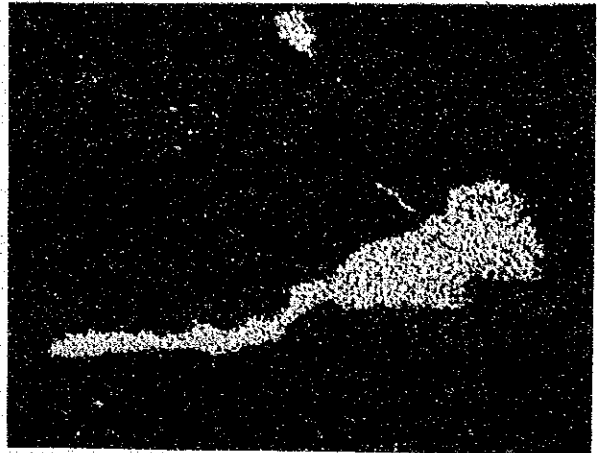
Fe K $\alpha$  X-ray image



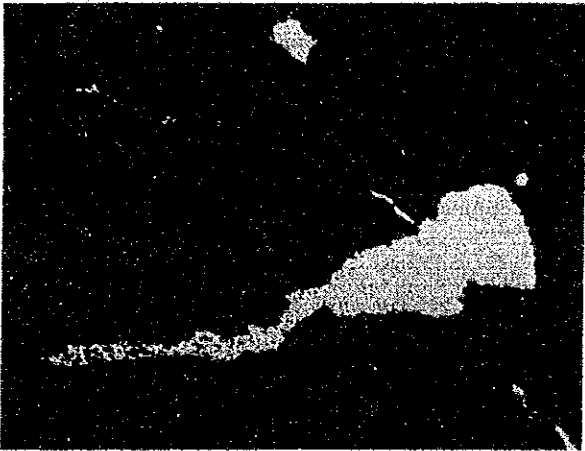
Sample No. : New Topaz-1  
Locality : New Topaz Mine  
Mineral : Electrum-Arsenopyrite



Compositional image 25μ



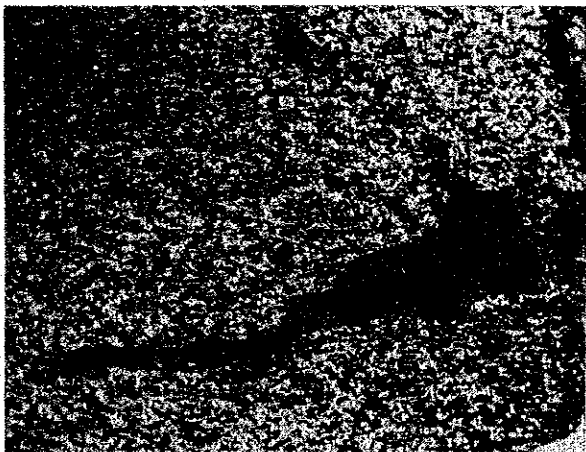
Au Lα X-ray image



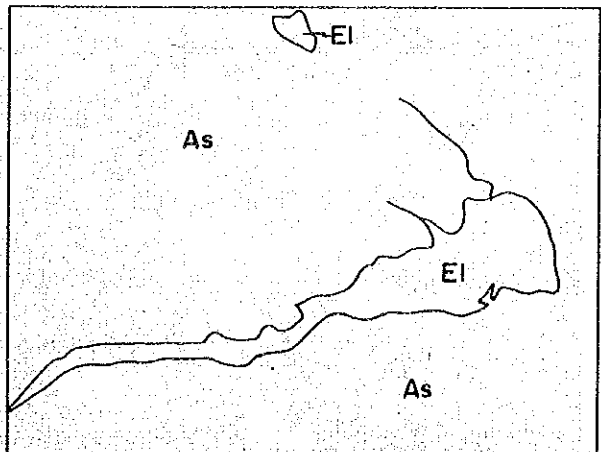
Ag Lα X-ray image



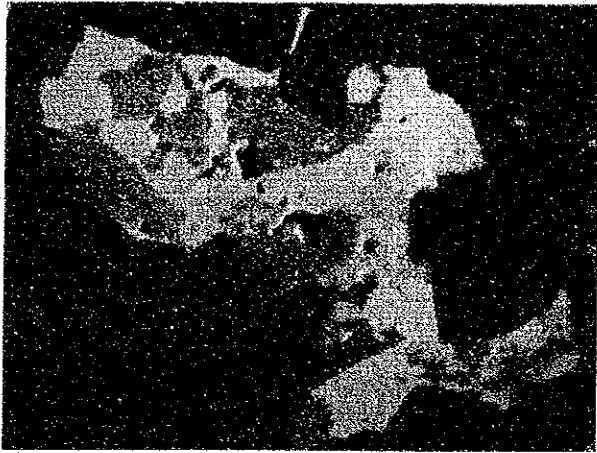
S Kα X-ray image



As Kα X-ray image

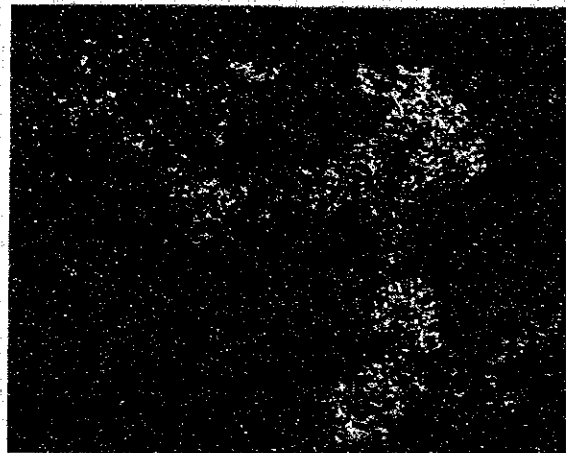


Sample No. : G&P-4-1  
Locality : Globe & Phoenix Mine 7L  
Mineral : Stibioenargite-Galena-Pyrite



Compositional image

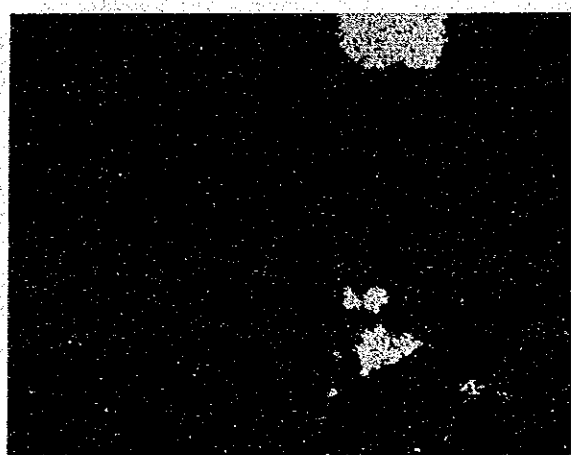
25μ



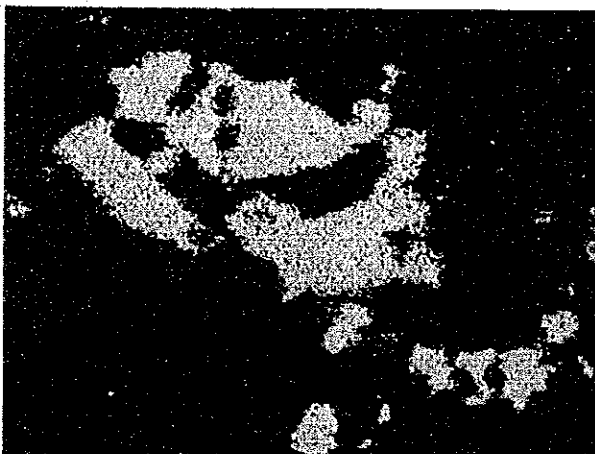
Pb Lα X-ray image



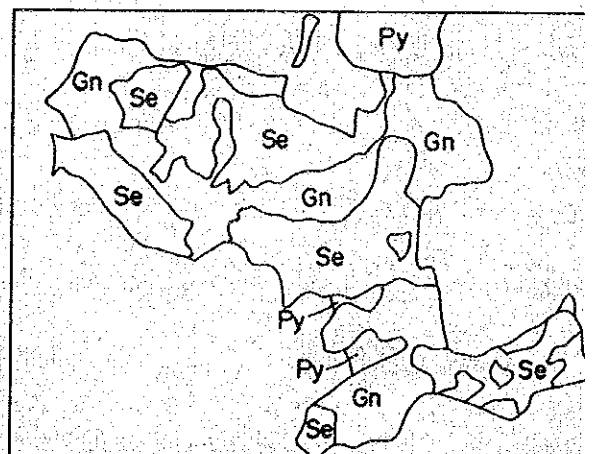
Cu Kα X-ray image



Fe Kα X-ray image



Sb Lα X-ray image





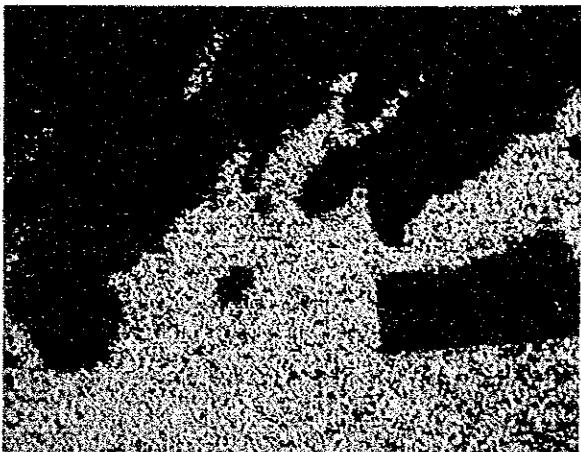
Sample No. : New Topaz-1  
Locality : New Topaz Mine  
Mineral : Sphalerite-Galena-Pyrite



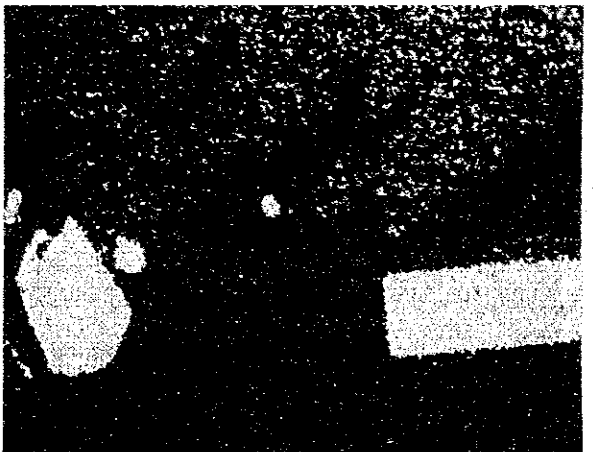
Compositional image 25μ



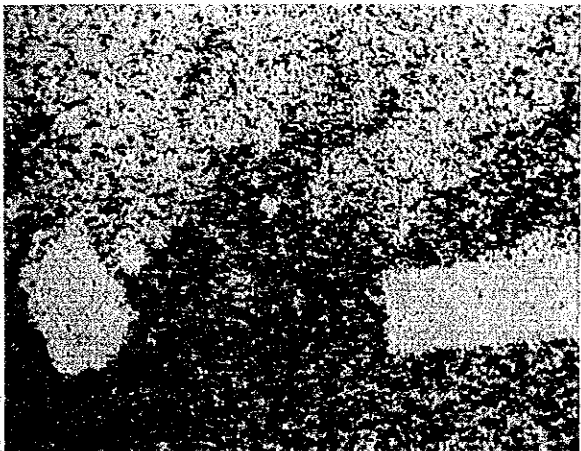
Zn Kα X-ray image



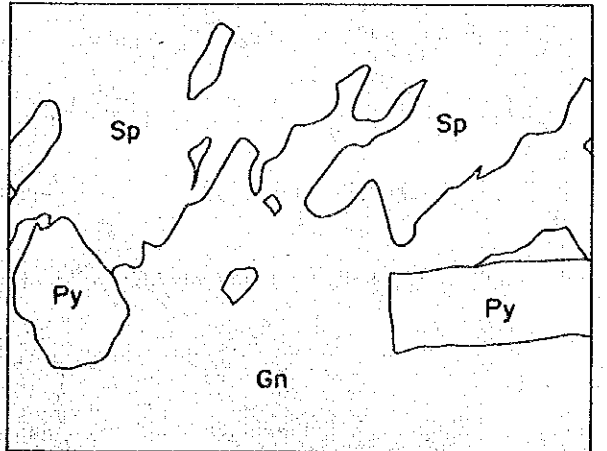
Pb Lα X-ray image



Fe Kα X-ray image



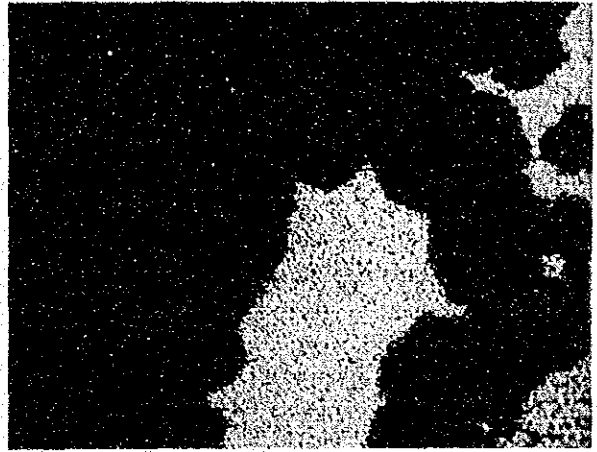
S Kα X-ray image



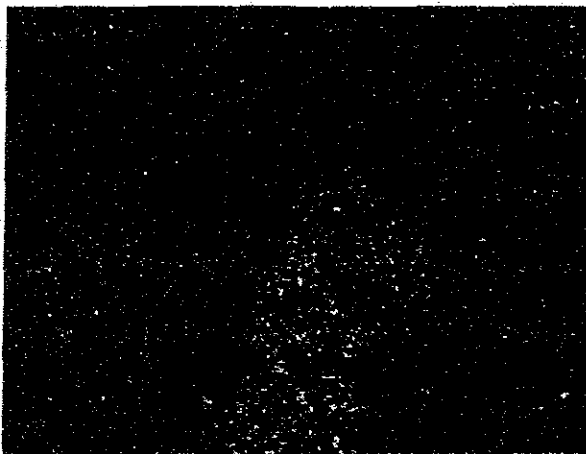
Sample No. : G&P-18  
Locality : Globe & Phoenix Mine 6L  
Mineral : Tetrahedrite-Galena-Pyrite



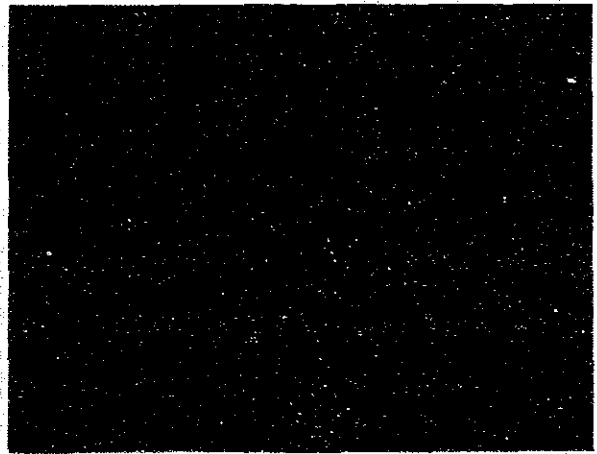
Compositional image 25 $\mu$



Cu K $\alpha$  X-ray image



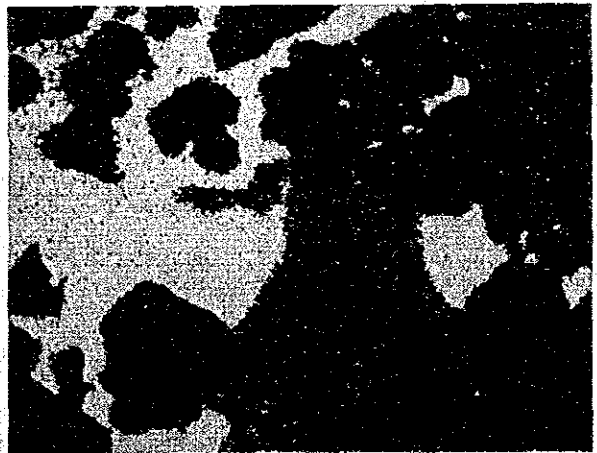
Zn K $\alpha$  X-ray image



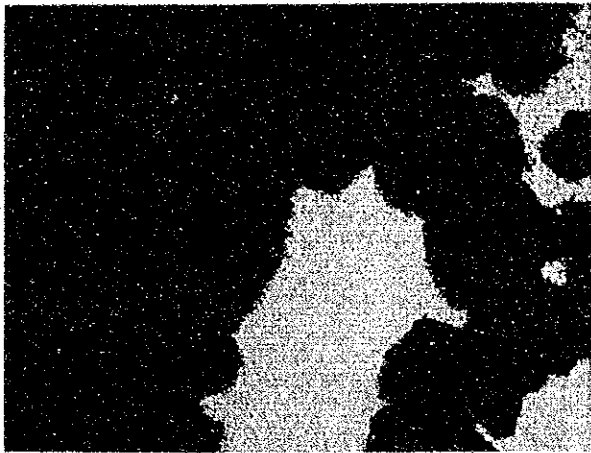
Ag L $\alpha$  X-ray image



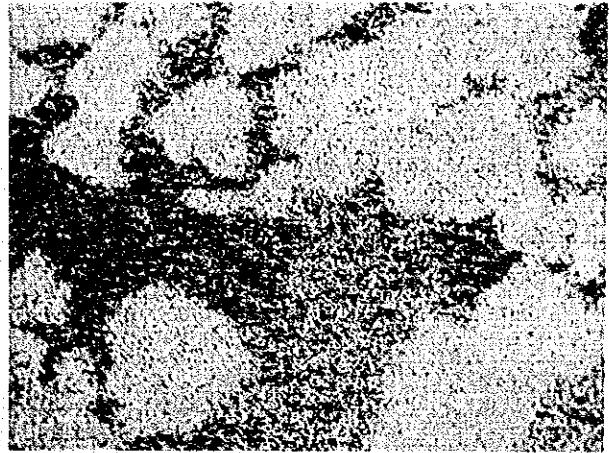
Fe K $\alpha$  X-ray image



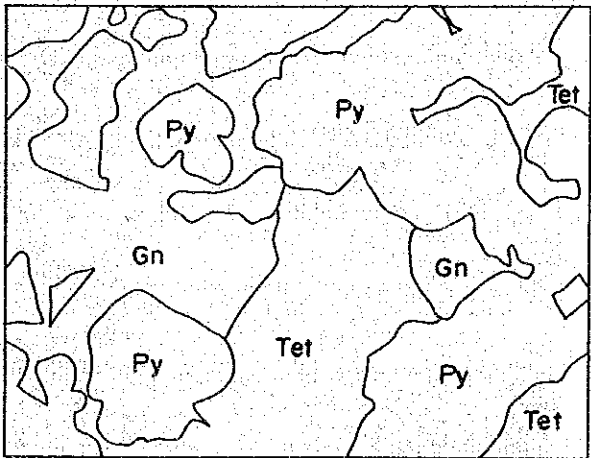
Pb L $\alpha$  and As K $\alpha$  X-ray image



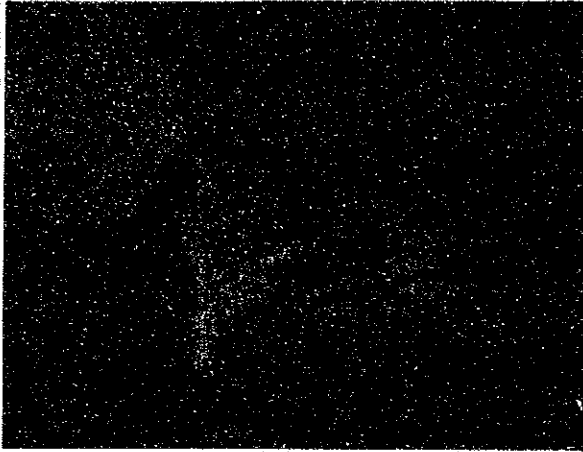
Sb L $\alpha$  X-ray image



S K $\alpha$  X-ray image

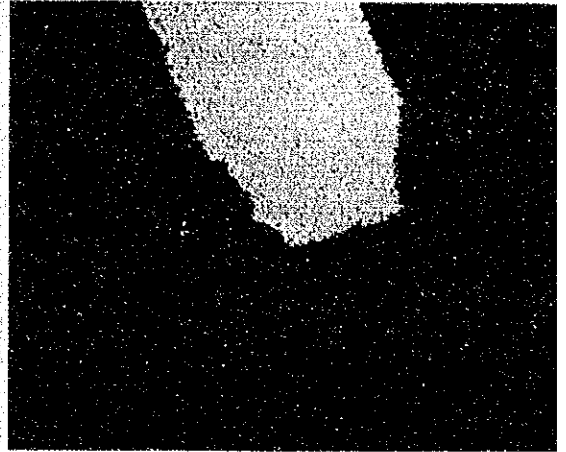


Sample No. : G&P-19-1  
Location : Globe & Phoenix Mine  
Mineral : Gersdorffite-Galena-Tetrahedrite

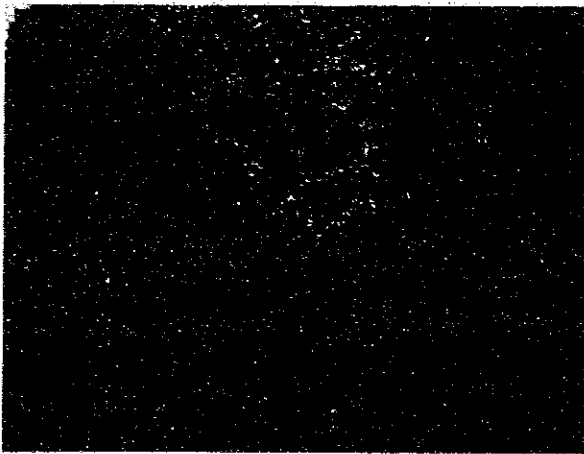


Compositional image

25 $\mu$



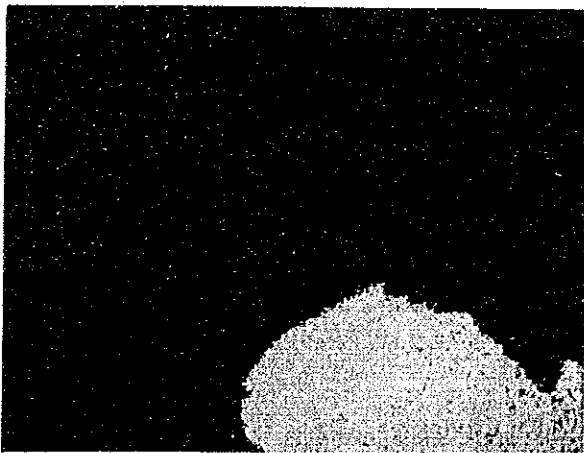
Ni K $\alpha$  X-ray image



Co K $\alpha$  X-ray image



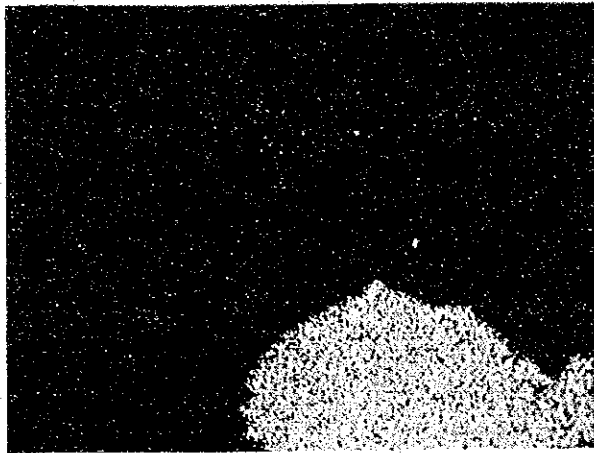
Fe K $\alpha$  X-ray image



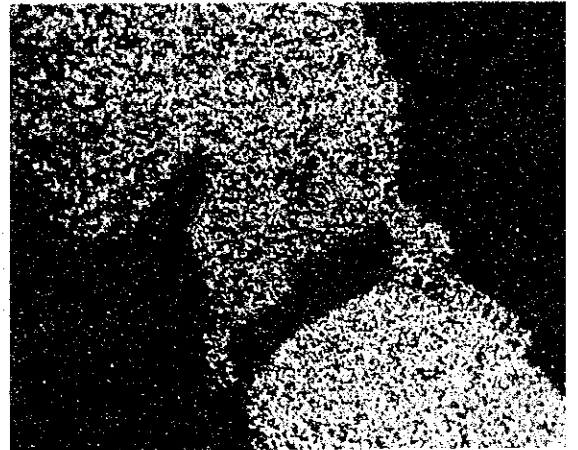
Cu K $\alpha$  X-ray image



PbL $\alpha$  and AsK $\alpha$  X-ray image



Sb L $\alpha$  X-ray image



S K $\alpha$  X-ray image

