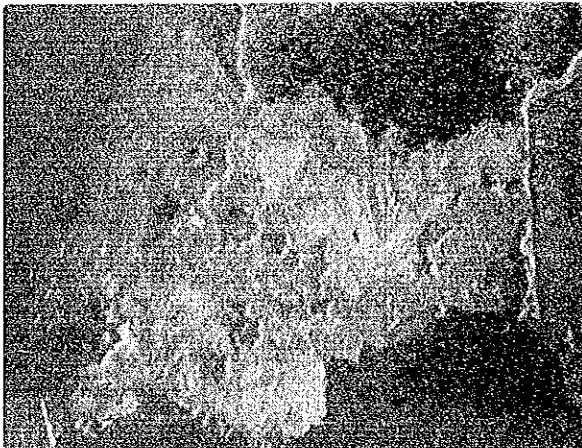


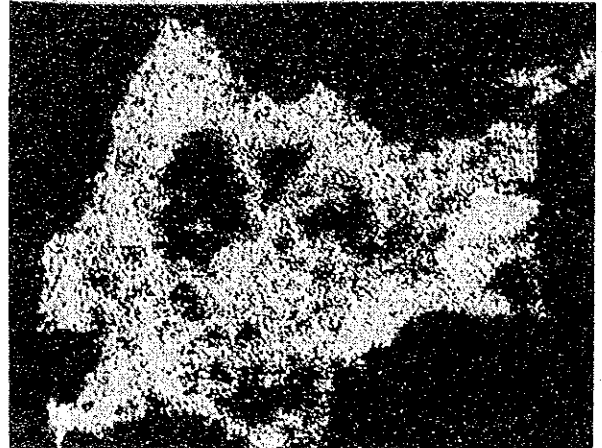
Appendix 8 Photomicrographs of EPMA Microanalysis

Sample No. : Unit-2
Location : Unit Mine
Mineral : Chalcocite

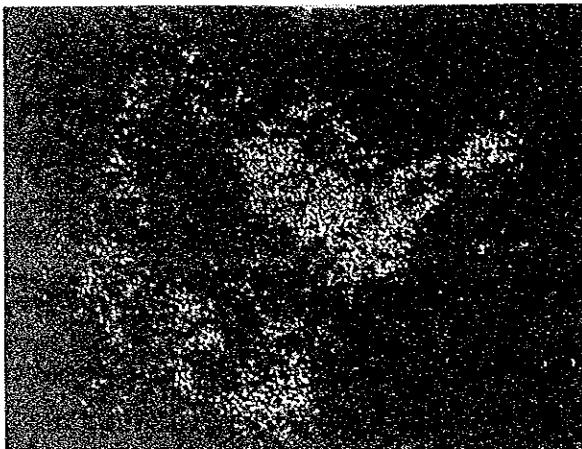


Compositional image

25μ



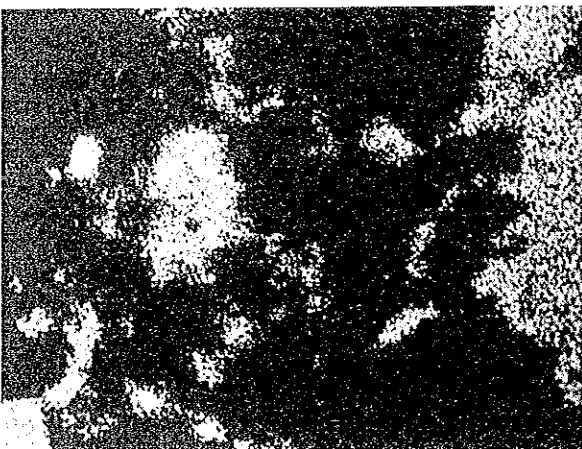
Cu Kα X-ray image



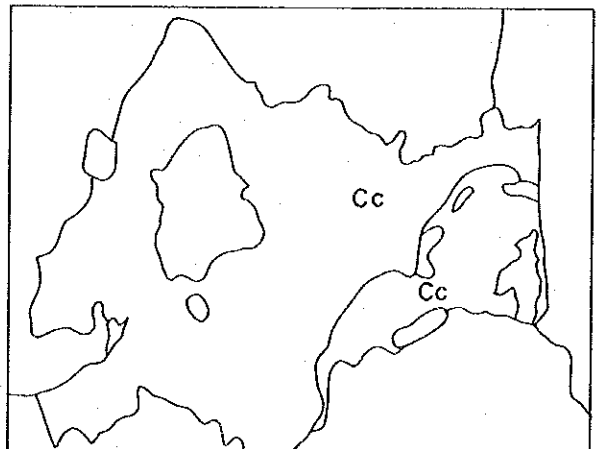
Pb Mα X-ray image



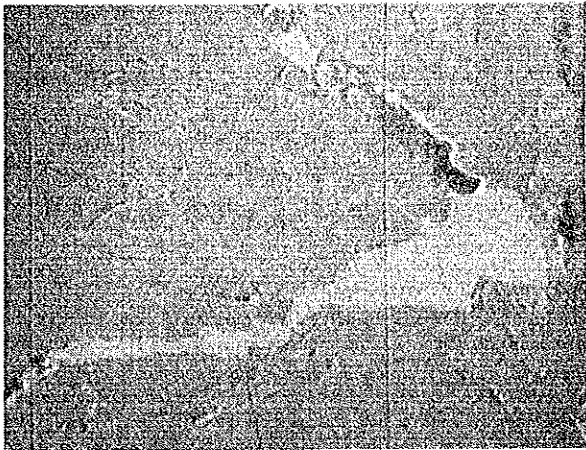
S Kα X-ray image



Fe Kα X-ray image

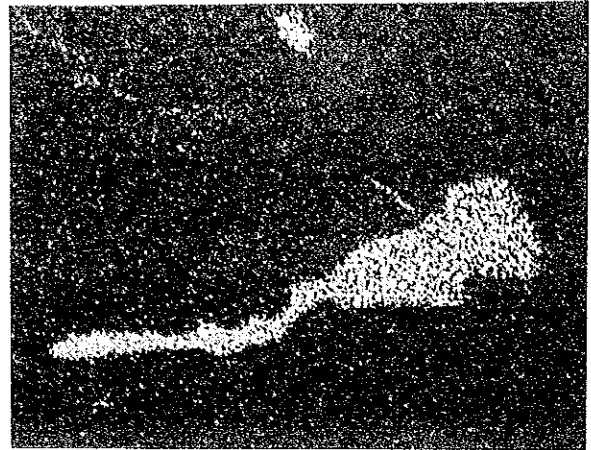


Sample No. : New Topaz-1
Locality : New Topaz Mine
Mineral : Electrum-Arsenopyrite

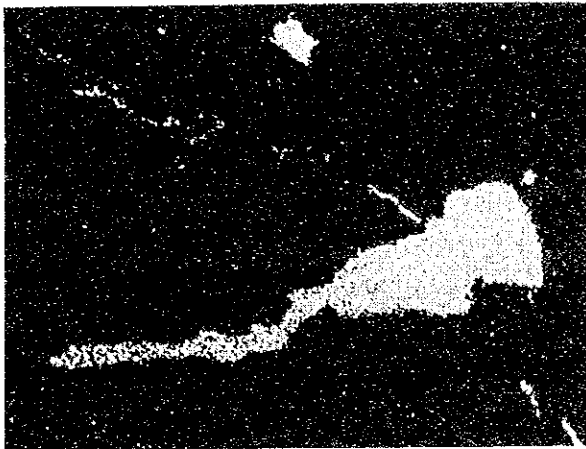


Compositional image

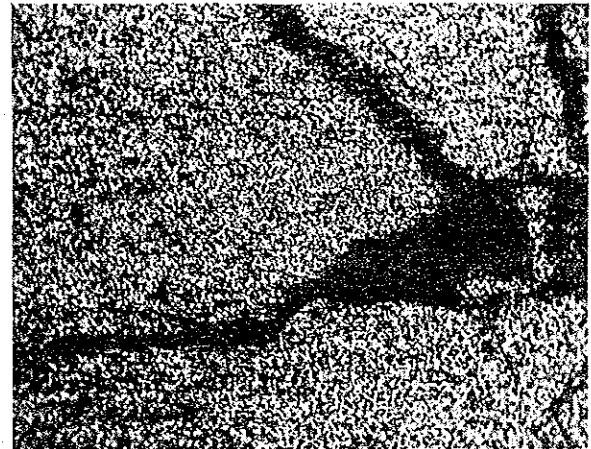
25 μ



Au L α X-ray image



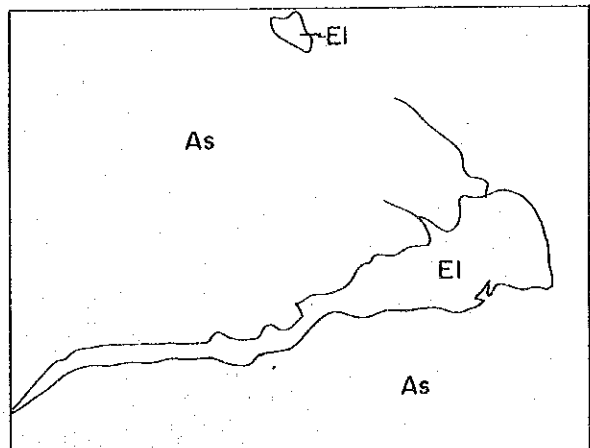
Ag L α X-ray image



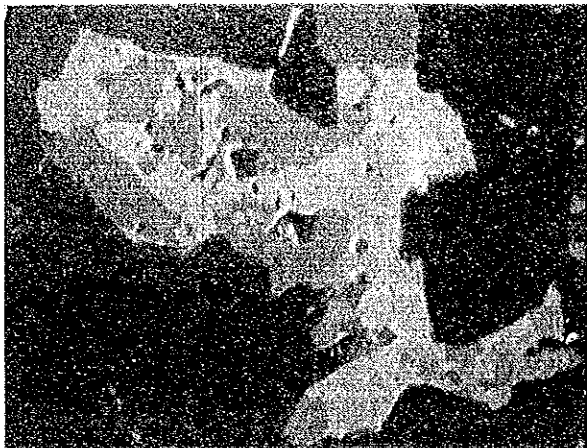
S K α X-ray image



As K α X-ray image

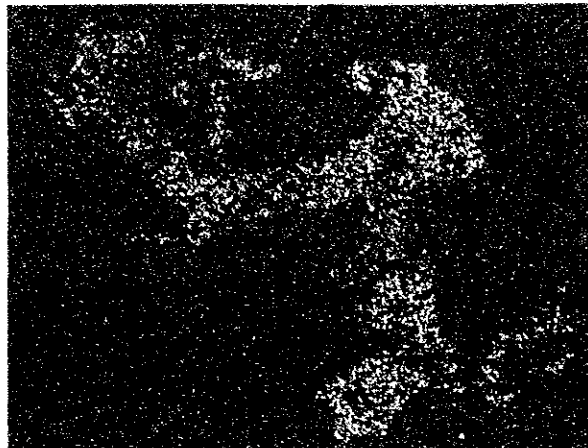


Sample No. : G&P-4-1
 Locality : Globe & Phoenix Mine 7L
 Mineral : Stibioenargite-Galena-Pyrite

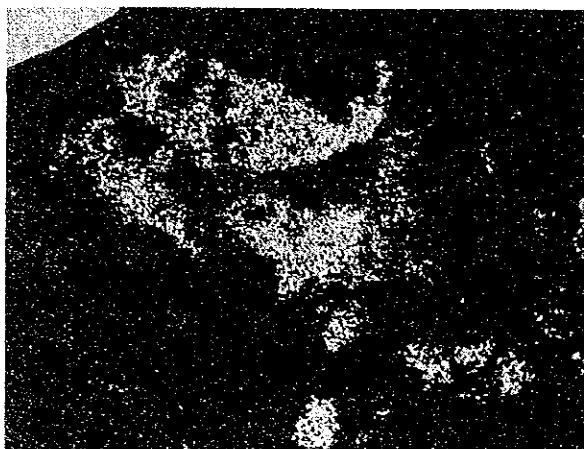


Compositional image

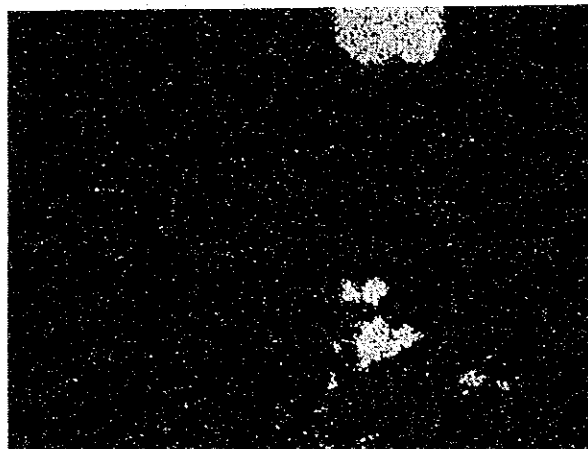
25μ



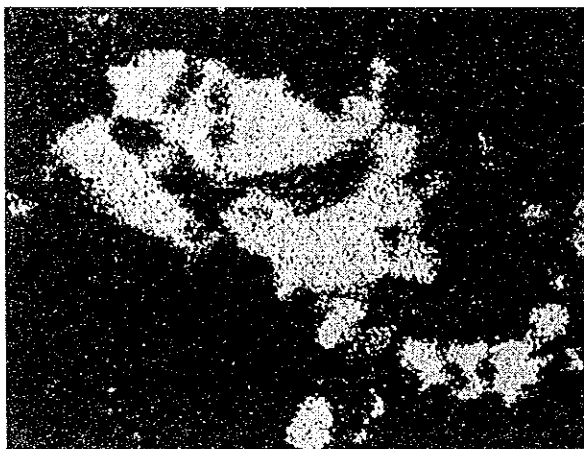
Pb Lα X-ray image



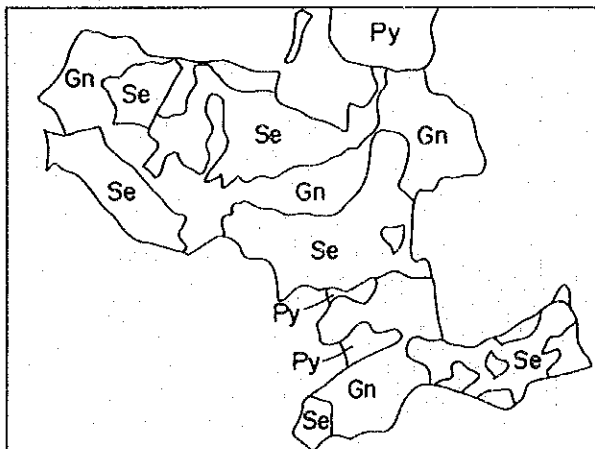
Cu Kα X-ray image



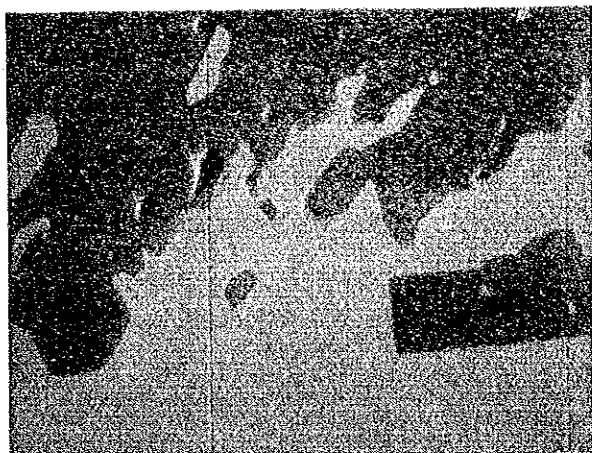
Fe Kα X-ray image



Sb Lα X-ray image



Sample No. : New Topaz-1
Locality : New Topaz Mine
Mineral : Sphalerite-Galena-Pyrite



Compositional image

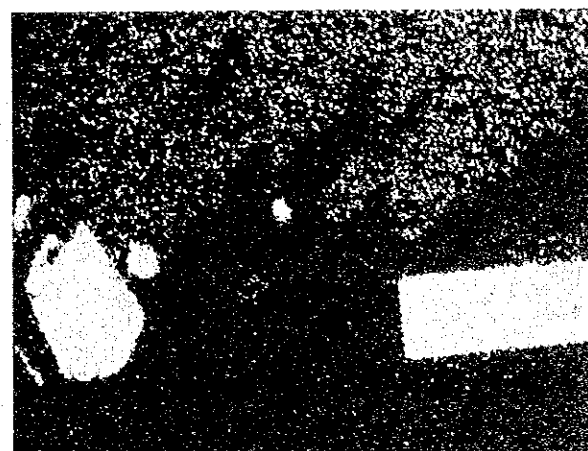
25μ



Zn K α X-ray image



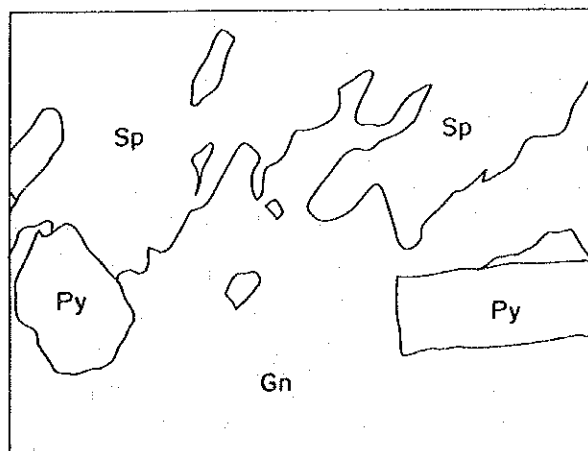
Pb L α X-ray image



Fe K α X-ray image



S K α X-ray image

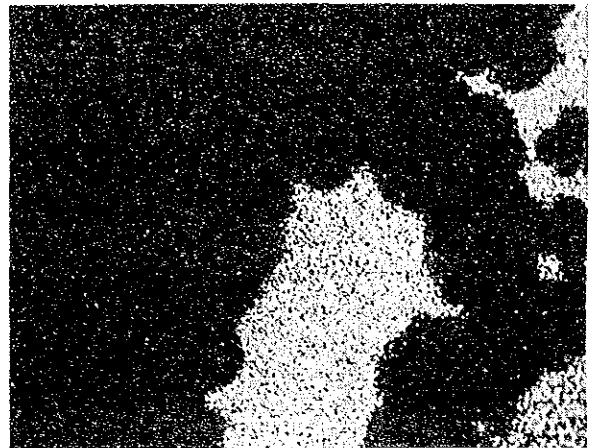


Sample No. : G&P-18
Locality : Globe & Phoenix Mine 6L
Mineral : Tetrahedrite-Galena-Pyrite

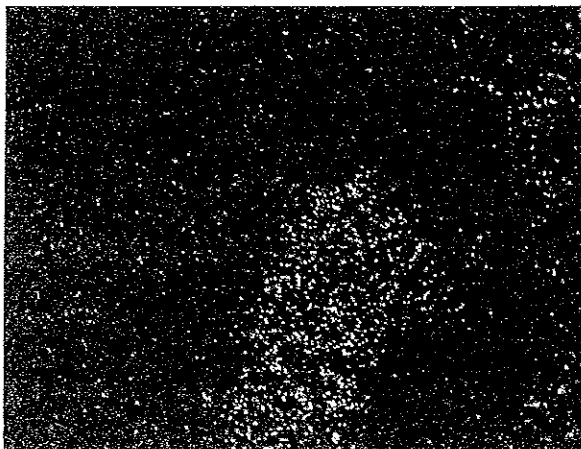


Compositional image

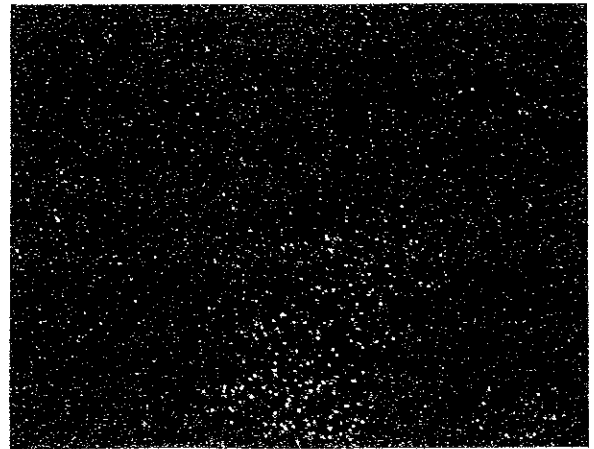
25μ



Cu Kα X-ray image



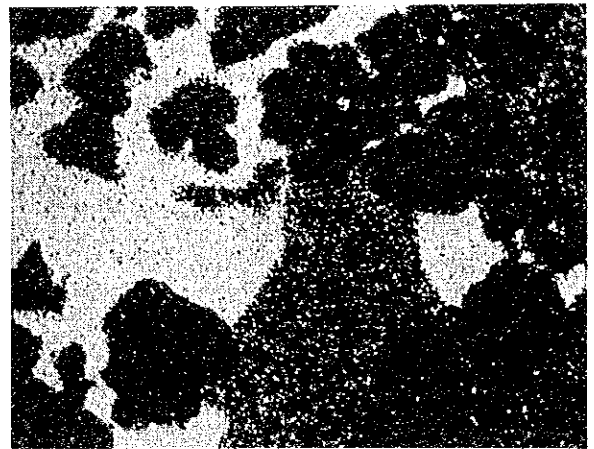
Zn Kα X-ray image



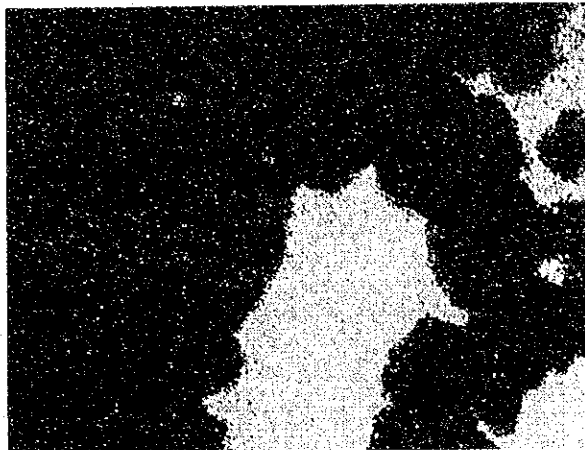
Ag Lα X-ray image



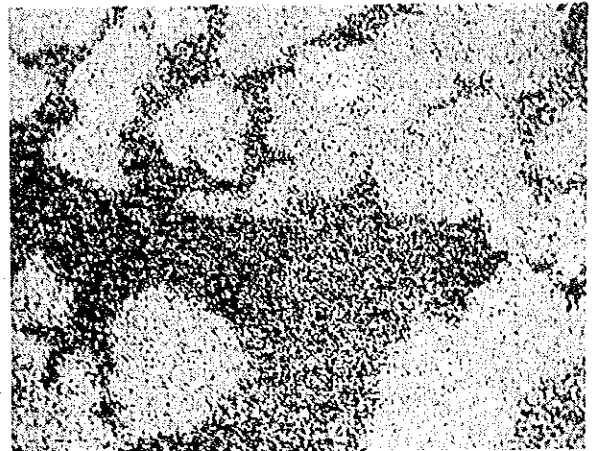
Fe Kα X-ray image



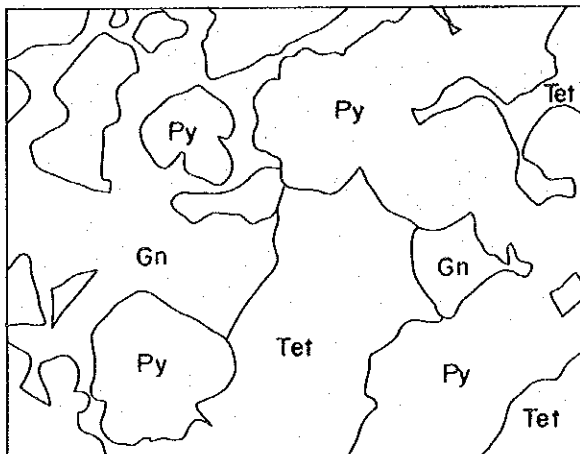
Pb Lα and As Kα X-ray image



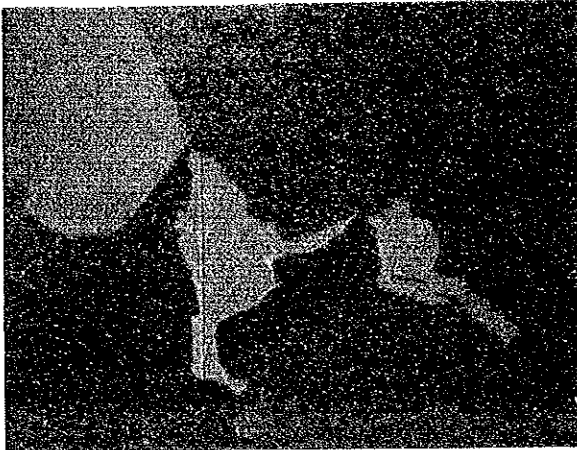
Sb L α X-ray image



S K α X-ray image

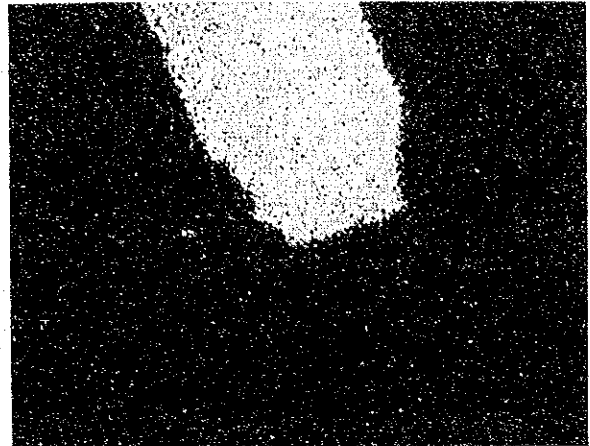


Sample No. : G&P-19-1
Location : Globe & Phoenix Mine
Mineral : Gersdorffite-Galena-Tetrahedrite

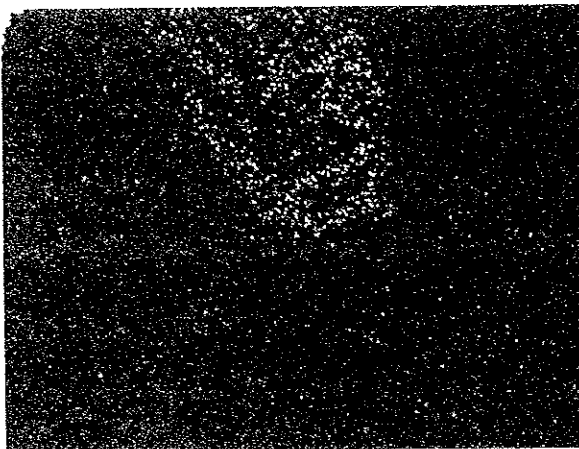


Compositional image

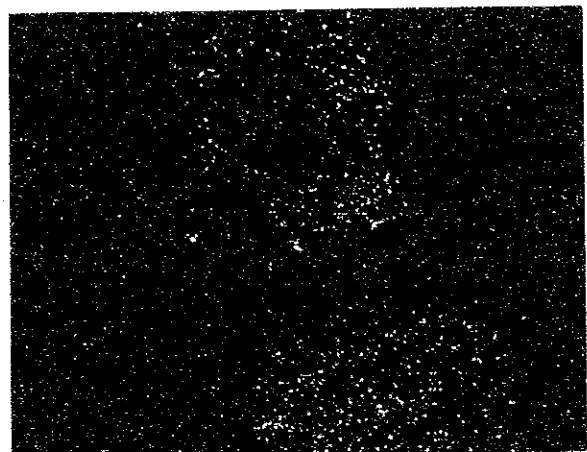
25μ



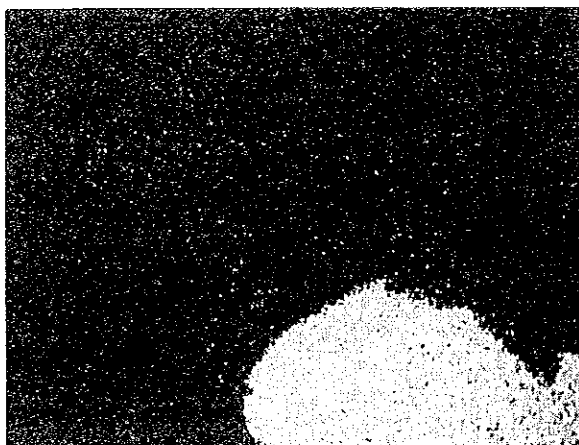
Ni K α X-ray image



Co K α X-ray image



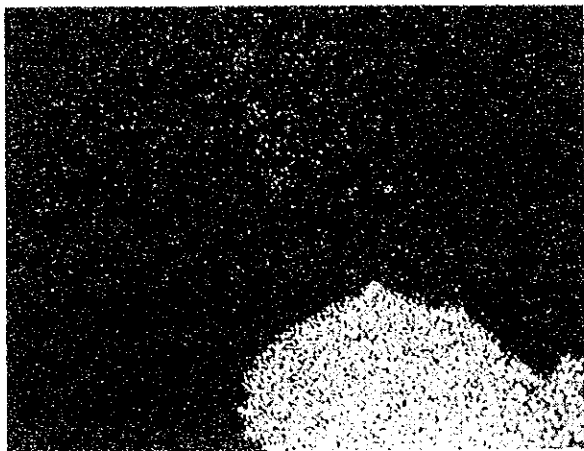
Fe K α X-ray image



Cu K α X-ray image



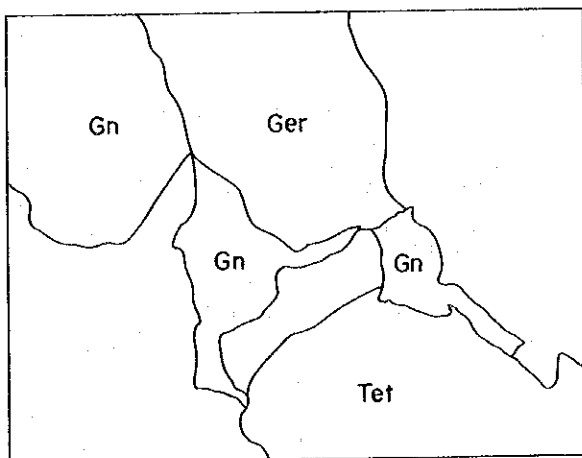
PbL α and AsK α X-ray image



Sb L α X-ray image



S K α X-ray image



JICA