

<p><i>White, fine grained, partly medium grained, dark gray, partly little cracked, joint clay of some occurs along upper boundary</i></p>	<p>37.50</p>	<p>100%</p>	<p>100%</p>
	<p>282.85</p>	<p>100%</p>	<p>100%</p>
	<p>280</p>	<p>100%</p>	<p>100%</p>
	<p>300</p>	<p>100%</p>	<p>100%</p>
	<p>310</p>	<p>100%</p>	<p>100%</p>
	<p>320</p>	<p>100%</p>	<p>100%</p>
	<p>330</p>	<p>100%</p>	<p>100%</p>
	<p>340</p>	<p>100%</p>	<p>100%</p>
	<p>350</p>	<p>100%</p>	<p>100%</p>
	<p>360</p>	<p>100%</p>	<p>100%</p>
<p>370</p>	<p>100%</p>	<p>100%</p>	
<p>380</p>	<p>100%</p>	<p>100%</p>	
<p>390</p>	<p>100%</p>	<p>100%</p>	
<p>400</p>	<p>100%</p>	<p>100%</p>	
<p>410</p>	<p>100%</p>	<p>100%</p>	
<p>420</p>	<p>100%</p>	<p>100%</p>	
<p>437.70</p>	<p>100%</p>	<p>100%</p>	
<p>438.90</p>	<p>100%</p>	<p>100%</p>	
<p>439.05</p>	<p>100%</p>	<p>100%</p>	
<p>439.05</p>	<p>100%</p>	<p>100%</p>	
<p>439.15</p>	<p>100%</p>	<p>100%</p>	
<p>439.15</p>	<p>100%</p>	<p>100%</p>	
<p>439.20</p>	<p>100%</p>	<p>100%</p>	
<p>439.20</p>	<p>100%</p>	<p>100%</p>	
<p>439.85</p>	<p>100%</p>	<p>100%</p>	

White, fine grained, partly medium grained, dark gray, partly little cracked, joint clay of some occurs along upper boundary

Dark gray, medium grained, partly, altered, along cracks, with unaltered, blue, fragment of the lower part, dark gray
 261.175m
 261.175m

Dark gray, fine to medium grained, hard, massive, dark gray, partly with tabular vein and vesicles, generally, altered, along cracks, with unaltered, blue, fragment of the lower part, dark gray, with some fibrously

- 241.75m Calcite vein 20mm (5%)
- 245.85m Calcite vein 10mm (5%)
- 248.20-263.85m Crack rich, Stibnite (10%)
- 263.85m Calcite vein (5-20%)
- 263.85-272.50m Crack rich (40-50, 40-80%)
- 263.85-272.50m Stibnite, partly, brown
- 272.50-284.85m Crack rich
- 284.85-290.85m Crack vein
- 290.85-405.85m Partly, vertical crack
- 405.85-421.50m Stibnite (10%)
- 421.50-425.80m Crack rich
- 425.80-425.80m Cracked

Dark gray, fine to medium grained, hard, massive, dark gray, partly with tabular vein and vesicles, generally, altered, along cracks, with unaltered, blue, fragment of the lower part, dark gray, with some fibrously

Dark gray, fine to medium grained, hard, massive, dark gray, partly with tabular vein and vesicles, generally, altered, along cracks, with unaltered, blue, fragment of the lower part, dark gray, with some fibrously

Dark gray, fine to medium grained, hard, massive, dark gray, partly with tabular vein and vesicles, generally, altered, along cracks, with unaltered, blue, fragment of the lower part, dark gray, with some fibrously

Dark gray, fine to medium grained, hard, massive, dark gray, partly with tabular vein and vesicles, generally, altered, along cracks, with unaltered, blue, fragment of the lower part, dark gray, with some fibrously

Dark gray, fine to medium grained, hard, massive, dark gray, partly with tabular vein and vesicles, generally, altered, along cracks, with unaltered, blue, fragment of the lower part, dark gray, with some fibrously

Dark gray, fine to medium grained, hard, massive, dark gray, partly with tabular vein and vesicles, generally, altered, along cracks, with unaltered, blue, fragment of the lower part, dark gray, with some fibrously

Dark gray, fine to medium grained, hard, massive, dark gray, partly with tabular vein and vesicles, generally, altered, along cracks, with unaltered, blue, fragment of the lower part, dark gray, with some fibrously

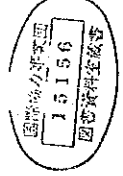
End of Note.

HOLE NO LD-11
 AREA LUBHUKU
 DATE DRILLED DEC 7, 1983 - DEC 15, 1983
 TOTAL DEPTH 224.78m
 ELEVATION +268m
 COORDINATE X=2,930,023 Y=75,885

國際協力事業団
 15156
 国際探査隊
 団番号

JAPAN INTERNATIONAL COOPERATION AGENCY
 1 320
 4K Site
 Dec 1, 1984 Proposed by Nishida, S. Morikawa

Depth [m]	Interval of Bore hole [m]	Core Recovery	Rock Description	Dip of Strata	Columnar Section	
					Thickness of Interval	Dip of Strata
5.89	5.89-6.20	100%	Silt, clay, brown, calcareous, medium grain, brownish grey, calcareous, medium grain, brownish grey, calcareous, medium grain, brownish grey.			
8.40	8.40-8.59	95%	Sandstone, medium grained, brownish grey.			
13.80	13.80-14.80		Shale, dark brown, fine grained, calcareous, brownish grey, calcareous, medium grain, brownish grey, calcareous, medium grain, brownish grey.			
15.56	15.56-16.10		Sandstone, medium grained, brownish grey, calcareous, medium grain, brownish grey, calcareous, medium grain, brownish grey.			
18.10	18.10-18.17		Sandstone, medium grained, brownish grey, calcareous, medium grain, brownish grey, calcareous, medium grain, brownish grey.			
19.20	19.20-20.88	100%	Sandstone, medium grained, brownish grey, calcareous, medium grain, brownish grey, calcareous, medium grain, brownish grey.	10°		
23.98	23.98-24.54		Sandstone, medium grained, brownish grey, calcareous, medium grain, brownish grey, calcareous, medium grain, brownish grey.			
25.53	25.53-26.58	100%	Sandstone, medium grained, brownish grey, calcareous, medium grain, brownish grey, calcareous, medium grain, brownish grey.			
29.58	29.58-30.98		Sandstone, medium grained, brownish grey, calcareous, medium grain, brownish grey, calcareous, medium grain, brownish grey.			
34.09	34.09-34.83		Sandstone, medium grained, brownish grey, calcareous, medium grain, brownish grey, calcareous, medium grain, brownish grey.			
35.83	35.83-36.48		Sandstone, medium grained, brownish grey, calcareous, medium grain, brownish grey, calcareous, medium grain, brownish grey.			
38.99	38.99-39.79		Sandstone, medium grained, brownish grey, calcareous, medium grain, brownish grey, calcareous, medium grain, brownish grey.			
40.03	40.03-41.81		Sandstone, medium grained, brownish grey, calcareous, medium grain, brownish grey, calcareous, medium grain, brownish grey.			
42.95	42.95-44.95		Sandstone, medium grained, brownish grey, calcareous, medium grain, brownish grey, calcareous, medium grain, brownish grey.			
48.83	48.83-48.87		Sandstone, medium grained, brownish grey, calcareous, medium grain, brownish grey, calcareous, medium grain, brownish grey.			
48.87	48.87-50.05		Sandstone, medium grained, brownish grey, calcareous, medium grain, brownish grey, calcareous, medium grain, brownish grey.			
51.81	51.81-51.85		Sandstone, medium grained, brownish grey, calcareous, medium grain, brownish grey, calcareous, medium grain, brownish grey.			
52.00	52.00-52.04		Sandstone, medium grained, brownish grey, calcareous, medium grain, brownish grey, calcareous, medium grain, brownish grey.			
54.36	54.36-55.33		Sandstone, medium grained, brownish grey, calcareous, medium grain, brownish grey, calcareous, medium grain, brownish grey.			
55.33	55.33-55.37		Sandstone, medium grained, brownish grey, calcareous, medium grain, brownish grey, calcareous, medium grain, brownish grey.			
56.93	56.93-58.31		Sandstone, medium grained, brownish grey, calcareous, medium grain, brownish grey, calcareous, medium grain, brownish grey.			
58.31	58.31-58.35		Sandstone, medium grained, brownish grey, calcareous, medium grain, brownish grey, calcareous, medium grain, brownish grey.			
58.35	58.35-59.54		Sandstone, medium grained, brownish grey, calcareous, medium grain, brownish grey, calcareous, medium grain, brownish grey.			
73.81	73.81-74.80	100%	Sandstone, coarse to medium grained, calcareous, partly with fine, white granules, calcareous, coarse to medium grained, calcareous, partly with fine, white granules.			
74.80	74.80-74.84		Sandstone, coarse to medium grained, calcareous, partly with fine, white granules, calcareous, coarse to medium grained, calcareous, partly with fine, white granules.			
74.84	74.84-74.88		Sandstone, coarse to medium grained, calcareous, partly with fine, white granules, calcareous, coarse to medium grained, calcareous, partly with fine, white granules.			
74.88	74.88-74.92		Sandstone, coarse to medium grained, calcareous, partly with fine, white granules, calcareous, coarse to medium grained, calcareous, partly with fine, white granules.			
74.92	74.92-74.96		Sandstone, coarse to medium grained, calcareous, partly with fine, white granules, calcareous, coarse to medium grained, calcareous, partly with fine, white granules.			
74.96	74.96-74.99		Sandstone, coarse to medium grained, calcareous, partly with fine, white granules, calcareous, coarse to medium grained, calcareous, partly with fine, white granules.			
74.99	74.99-75.03		Sandstone, coarse to medium grained, calcareous, partly with fine, white granules, calcareous, coarse to medium grained, calcareous, partly with fine, white granules.			
75.03	75.03-75.07		Sandstone, coarse to medium grained, calcareous, partly with fine, white granules, calcareous, coarse to medium grained, calcareous, partly with fine, white granules.			
75.07	75.07-75.11		Sandstone, coarse to medium grained, calcareous, partly with fine, white granules, calcareous, coarse to medium grained, calcareous, partly with fine, white granules.			
75.11	75.11-75.15		Sandstone, coarse to medium grained, calcareous, partly with fine, white granules, calcareous, coarse to medium grained, calcareous, partly with fine, white granules.			
82.94	82.94-83.10	100%	Sandstone, coarse grained, calcareous, highly rich at the upper part, with calcareous medium white.			
83.10	83.10-83.14		Sandstone, coarse grained, calcareous, highly rich at the upper part, with calcareous medium white.			
83.14	83.14-83.18		Sandstone, coarse grained, calcareous, highly rich at the upper part, with calcareous medium white.			
83.18	83.18-83.22		Sandstone, coarse grained, calcareous, highly rich at the upper part, with calcareous medium white.			
92.29	92.29-93.93		Sandstone, coarse grained, calcareous, partly fossiliferous, white, calcareous, coarse grained, calcareous, partly fossiliferous, white.			
93.93	93.93-100.73		Sandstone, coarse grained, calcareous, partly fossiliferous, white, calcareous, coarse grained, calcareous, partly fossiliferous, white.			
102.83	102.83-105.96		Sandstone, coarse grained, calcareous, partly fossiliferous, white, calcareous, coarse grained, calcareous, partly fossiliferous, white.			
112.12	112.12-113.84		Sandstone, very coarse grained, calcareous, with mica, calcareous, very coarse grained, calcareous, with mica.			
113.84	113.84-114.80		Sandstone, very coarse grained, calcareous, with mica, calcareous, very coarse grained, calcareous, with mica.			
114.80	114.80-115.84		Sandstone, very coarse grained, calcareous, with mica, calcareous, very coarse grained, calcareous, with mica.			
115.84	115.84-116.88		Sandstone, very coarse grained, calcareous, with mica, calcareous, very coarse grained, calcareous, with mica.			
116.88	116.88-119.38		Sandstone, very coarse grained, calcareous, with mica, calcareous, very coarse grained, calcareous, with mica.			
119.38	119.38-120.83		Sandstone, coarse grained, calcareous, white.			
120.83	120.83-121.87		Sandstone, coarse grained, calcareous, white.			
121.87	121.87-122.91		Sandstone, coarse grained, calcareous, white.			
122.91	122.91-123.34		Sandstone, coarse grained, calcareous, white.			
123.34	123.34-123.60		Sandstone, coarse grained, calcareous, white.			
123.60	123.60-124.89		Sandstone, coarse grained, calcareous, white.			
124.89	124.89-125.34		Sandstone, coarse grained, calcareous, white.			
125.34	125.34-128.99		Sandstone, coarse grained, calcareous, white.			
133.91	133.91-134.89		Sandstone, very coarse grained, calcareous, at the bottom, calcareous, very coarse grained, calcareous.			
134.89	134.89-142.08		Sandstone, very coarse grained, calcareous, at the bottom, calcareous, very coarse grained, calcareous.			
142.08	142.08-143.03		Sandstone, very coarse grained, calcareous, at the bottom, calcareous, very coarse grained, calcareous.			
143.03	143.03-145.03		Sandstone, very coarse grained, calcareous, at the bottom, calcareous, very coarse grained, calcareous.			
145.03	145.03-148.03		Sandstone, very coarse grained, calcareous, at the bottom, calcareous, very coarse grained, calcareous.			

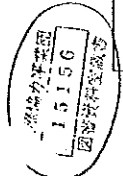


HOLE NO. : LD13
 AREA : LUBHUKU
 DATE DRILLED : 3. NOV. 1984. 13. NOV. 1984
 TOTAL DEPTH : 319.40m
 ELEVATION : +264 m
 COORDINATE : X=+2930,000Y =+79,000

JAPAN INTERNATIONAL COOPERATION AGENCY
 Borehole Log LD13

Scale 1:200
 Date Sep. 1985 Prepared by S. Morikawa, M. Morikawa

Depth of Borehole (M)	Apparent Thickness of Strata (M)	True Thickness of Strata (M)	DIP Column or StrataSection	Rock Description	Recovery
0					non-coring
7.24				Soft and weathered rock.	
7.61				Shale, sandy, weathered, dark brownish gray.	100%
14.06				Shale, sandy, partly little weathered, laminated dark gray.	100%
20.85				Sandstone, coarse grained, argillaceous, whitish gray, partly interbedded thin shale, little weathered along cracks.	100%
23.76				Shale, sandy, dark gray.	
26.42				Sandstone, medium grained, little indurated, light gray.	
29.14				Sandstone, fine grained, micaceous, well indurated, gray.	
29.34				Shale, sandy, with thin laminae, sandstone, dark gray.	
29.39				Sandstone, medium grained, little indurated, light gray.	
31.42				Sandstone, medium grained, coarse lamellar, light gray.	
31.70				Shale, sandy, gray, with dark greenish gray.	
32.79				Sandstone, coarse grained, argillaceous, whitish gray.	
33.92				Sandstone, medium grained, little indurated, sandstone, light gray.	
39.35				Sandstone, medium grained, argillaceous, partly calcareous, weathered, whitish gray.	
42.23				Sandstone, medium grained, argillaceous, little indurated, whitish gray.	
44.46				Sandstone, fine to medium grained, well laminated, micaceous, gray.	
46.21				Sandstone, fine grained, well laminated, micaceous, gray.	
46.60				Shale and low sandstone, argillaceous, laminated.	
48.06				Sandstone, coarse grained, argillaceous, whitish gray.	
49.63				Sandstone, medium grained, partly indurated, with mica, light gray.	
50.25				Sandstone, fine grained, well laminated, gray.	
53.60				Sandstone, medium grained, argillaceous, partly indurated, whitish gray.	
54.13				Sandstone, fine grained, well laminated, gray.	
54.66				Sandstone, medium grained, coarse lamellar, argillaceous, whitish gray.	
59.13				Sandstone, coarse to very coarse grained, partly indurated, whitish gray, argillaceous, whitish gray.	
61.08				Sandstone, fine grained, indurated, with thin gray.	
63.79				Sandstone, medium grained, partly well indurated, whitish gray.	
64.08				Sandstone, fine grained, well laminated, micaceous, gray.	
66.41				Shale and fine sandstone, argillaceous, laminated, micaceous, gray.	
66.52				Sandstone, medium grained, partly with thin shales, dark gray.	
68.24				Sandstone, coarse grained, argillaceous, whitish gray.	
69.80				Sandstone, fine grained, well laminated, gray.	
70.17				Sandstone, medium grained, argillaceous, whitish gray.	
71.48				Shale, sandy, argillaceous, laminated with sandstone, gray.	
74.47				Sandstone, fine grained, indurated, gray.	
74.48				Sandstone, medium to coarse grained, with mica, light gray.	
75.13				Sandstone, medium grained, little indurated, argillaceous, light gray.	
76.70				Sandstone, fine grained, well laminated, little indurated, light gray.	
77.24				Sandstone, fine grained, well laminated, argillaceous, light gray.	
77.95				Sandstone, coarse grained, with thin shales, argillaceous, gray.	
81.70				Sandstone and shale, rhythmic, laminated.	
82.00				Shale, argillaceous.	
82.30				Sandstone, medium grained, with coarse grained, argillaceous, light gray.	
83.75				Sandstone and shale, rhythmic, laminated.	
84.30				Sandstone, medium grained, indurated, argillaceous, light gray.	
85.86				Sandstone, medium to coarse grained, argillaceous, light gray.	
87.74				Sandstone, fine grained, indurated, partly indurated, gray.	
88.71				Sandstone, coarse grained, little indurated, argillaceous, light gray.	
89.30				Sandstone, medium grained, argillaceous, light gray.	
89.34				Sandstone, medium grained, argillaceous, light gray.	
90.85				Sandstone, fine grained, well laminated, argillaceous, light gray.	
91.35				Sandstone, coarse grained, argillaceous, whitish gray.	
91.62				Sandstone, medium grained, indurated, light gray.	
92.30				Sandstone, coarse grained, argillaceous, whitish gray.	
92.38				Shale, sandy, with remaining dark gray.	
94.45				Shale, sandy, with argillaceous, dark gray.	
95.24				Sandstone, fine grained, well laminated, argillaceous, gray.	
96.90				Sandstone, coarse grained, argillaceous, light gray.	
98.08				Sandstone, medium grained, argillaceous, light gray.	
100.00				Sandstone, fine grained, well laminated, argillaceous, gray.	
104.25				Sandstone, very fine grained, well laminated, with white veins, gray.	
106.80				Sandstone, very fine grained, argillaceous, dark gray.	
107.53				Shale, indurated, gray, indurated, gray.	
108.15				Sandstone, medium to coarse grained, argillaceous, whitish gray.	
108.57				Sandstone, medium grained, argillaceous, light gray.	
109.77				Sandstone, medium grained, argillaceous, whitish gray.	
110.85				Sandstone, coarse grained, argillaceous, dark gray.	
120.40				Sandstone, very fine grained, argillaceous, dark gray.	
120.46				Sandstone, coarse grained, argillaceous, dark gray.	
123.03				Sandstone, medium grained, partly indurated, light gray.	
124.17				Sandstone, fine grained, well laminated, argillaceous, gray.	
124.43				Sandstone and shale, argillaceous, micaceous.	
129.20				Sandstone, medium grained, indurated, with mica, light gray.	
130.45				Sandstone and shale, argillaceous, laminated.	
130.66				Sandstone, coarse grained, argillaceous, light gray.	
131.50				Sandstone, coarse grained, argillaceous, whitish gray.	
131.52				Sandstone, coarse grained, argillaceous, whitish gray.	
132.74				Sandstone, coarse grained, argillaceous, whitish gray.	
134.95				Sandstone, coarse grained, argillaceous, whitish gray.	
135.19				Sandstone, fine grained, argillaceous, whitish gray.	
136.15				Sandstone, coarse grained, argillaceous, whitish gray.	
140.39				Sandstone, very fine to fine grained, argillaceous, whitish gray.	
141.83				Sandstone, medium grained, argillaceous, whitish gray.	
141.86				Sandstone, medium grained, argillaceous, whitish gray.	



HOLE NO. : LD14
 AREA : LUBHUKU
 DATE DRILLED : 11 SEP 1984~ 10 OCT 1984
 TOTAL DEPTH : 460.25m
 ELEVATION : +280m
 COORDINATE : X = 2930040, Y = 79910

Borehole Log LD14

Scale : 1:200
 Drawn by S. Matsuoka

Depth of Borehole (M)	Apparent Thickness of Strata (M)	True Thickness of Strata (M)	Dip Column of Strata Section	Rock Description	Core Recovery
3.00				Red. brown.	100%
21.75				Sandstone, medium grained, well-sorted, light brownish gray.	100%
27.10				Sandstone, coarse grained, little indurated, light brownish gray.	100%
27.80				Dark calcarenite.	100%
28.00				Dark, fine grained, calcarenite.	100%
28.50				Sandstone, fine grained, calcarenite, with micaceous matter.	100%
30.30				Sandstone, coarse grained, calcarenite, with micaceous matter.	100%
31.10				Sandstone, medium grained, light gray.	100%
32.00				Sandstone, fine to medium grained, light gray, with micaceous matter.	100%
32.50				Sandstone, medium grained, with micaceous matter, light gray.	100%
34.00				Sandstone, coarse grained, with micaceous matter, light gray.	100%
39.00				Sandstone, fine to medium grained, brownish, with micaceous matter, light gray.	100%
39.45				Sandstone, medium grained, with micaceous matter, light gray.	100%
39.90				Sandstone, fine grained, brownish, with micaceous matter, light gray.	100%
40.80				Sandstone, very fine grained, partly with micaceous matter, light gray.	100%
43.10				Sandstone, medium grained, brownish, with micaceous matter, light gray.	100%
47.00				Sandstone, fine to medium grained, brownish, with micaceous matter, light gray.	100%
48.10				Sandstone, very fine grained, brownish, with micaceous matter, light gray.	100%
50.25			9°	Shale, partly sandy, light gray.	100%
50.70				Sandstone, fine grained, brownish, with micaceous matter, light gray.	100%
51.50				Sandstone, fine grained, brownish, with micaceous matter, light gray.	100%
52.50				Shale, sandy, light gray.	100%
57.20				Sandstone, medium grained, brownish, with micaceous matter, light gray.	100%
59.20				Sandstone and shale in alternation, light gray.	100%
62.40				Shale, interbedded thin sandstone beds, light gray.	100%
63.40				Shale and sandstone, fine grained in alternation, light gray.	100%
64.20				Sandstone, fine grained, with micaceous matter, brownish, light gray.	100%
66.50				Sandstone, medium grained, brownish, with micaceous matter, light gray.	100%
69.80				Sandstone, medium grained, brownish, with micaceous matter, light gray.	100%
70.90				Sandstone, fine grained, with micaceous matter, light gray.	100%
72.50				Sandstone, medium grained, brownish, with micaceous matter, light gray.	100%
76.40				Sandstone, fine to medium grained, brownish, with micaceous matter, light gray.	100%
78.50				Sandstone, medium grained, brownish, with micaceous matter, light gray.	100%
81.25				Sandstone, fine grained, light gray.	100%
85.20				Shale, sandy, light gray.	100%
90.20				Sandstone, fine grained, brownish, with micaceous matter, light gray.	100%
90.80				Shale, sandy, calcarenous, light gray.	100%
93.20				Sandstone, fine grained, light gray.	100%
96.80				Shale, sandy, gray.	100%
100.50				Shale, sandy, calcarenous, light gray.	100%
107.80				Shale, sandy, gray.	100%
107.85				Shale, sandy, calcarenous, light gray.	100%
108.40				Sandstone, medium grained, brownish, with micaceous matter, light gray.	100%
109.10				Shale, with micaceous matter, brownish, light gray.	100%
109.80				Sandstone, medium grained, brownish, with micaceous matter, light gray.	100%
116.10			8°	Shale, sandy, partly with micaceous matter, brownish, light gray.	100%
118.80			6°	Sandstone, medium grained, brownish, with micaceous matter, light gray.	100%
120.20			0°	Shale, sandy, calcarenous, light gray.	100%
123.85				Sandstone, medium grained, brownish, with micaceous matter, light gray.	100%
124.10				Sandstone, fine grained, with thin shales, light gray.	100%
125.50				Sandstone, medium grained, brownish, with micaceous matter, light gray.	100%
125.90				Shale, calcarenous, light gray.	100%
132.20				Sandstone, fine to medium grained, brownish, with micaceous matter, light gray.	100%
139.10				Sandstone, fine to medium grained, brownish, with micaceous matter, light gray.	100%
139.30				Shale, sandy, calcarenous, light gray.	100%
140.00				Sandstone, fine grained, brownish, with micaceous matter, light gray.	100%
140.20				Sandstone, fine grained, brownish, with micaceous matter, light gray.	100%
140.50				Sandstone, medium grained, brownish, with micaceous matter, light gray.	100%
145.20				Sandstone, medium grained, brownish, with micaceous matter, light gray.	100%
146.20				Sandstone, medium grained, brownish, with micaceous matter, light gray.	100%
146.50				Sandstone, medium grained, brownish, with micaceous matter, light gray.	100%
146.80				Sandstone, medium grained, brownish, with micaceous matter, light gray.	100%
147.00				Sandstone, medium grained, brownish, with micaceous matter, light gray.	100%

HOLE NO LD-15
 AREA LUBHUKU
 DATE DRILLED JAN 10, 1984 - FEB 20, 1984
 TOTAL DEPTH 450.92m
 ELEVATION +25.4m
 COORDINATE X = 2,930,000 Y = 81,000

国際協力事業団
 15156
 国際地質調査隊

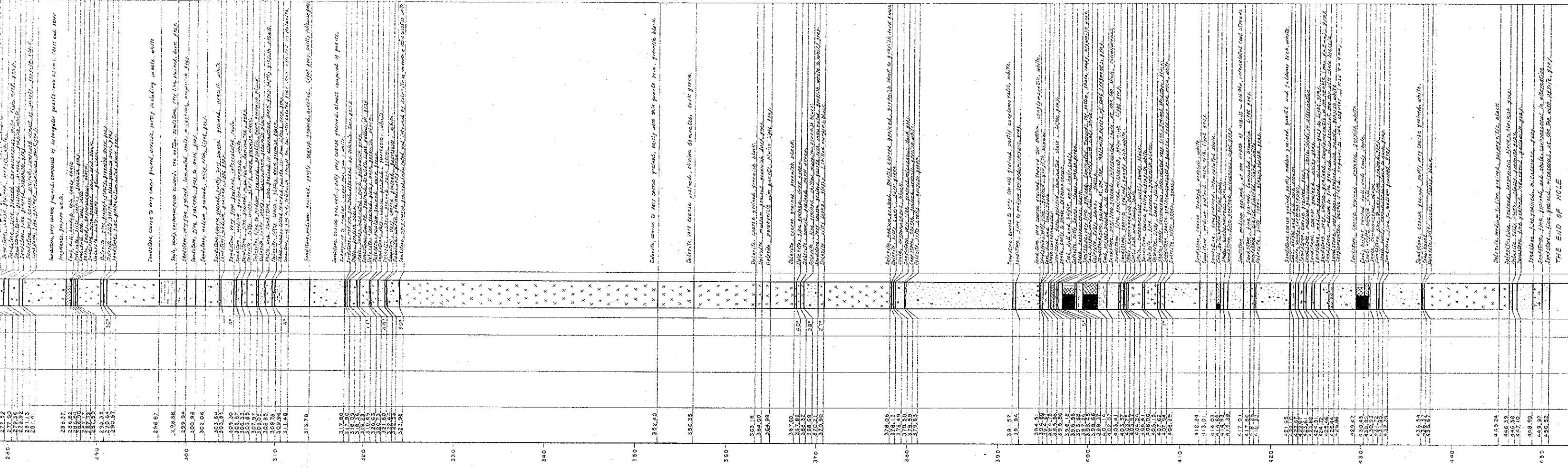
JAPAN INTERNATIONAL COOPERATION AGENCY
 Borehole Log LD-15
 Scale: 1:200
 Date: 1984

Depth of Borehole (m)	Apparent Thickness of Stratification (m)	True Thickness (m)	Dip of Stratification (°)	Core Recovery (%)	Rock Description
1.56					...
3.32					...
5.45					...
7.74					...
10.92					...
13.40					...
17.29					...
19.50					...
21.95					...
22.82					...
24.96					...
25.24					...
26.58					...
28.73					...
31.20					...
31.58					...
31.96					...
32.34					...
32.72					...
33.10					...
33.48					...
33.86					...
34.24					...
34.62					...
35.00					...
35.38					...
35.76					...
36.14					...
36.52					...
36.90					...
37.28					...
37.66					...
38.04					...
38.42					...
38.80					...
39.18					...
39.56					...
40.94					...
42.32					...
43.70					...
45.08					...
46.46					...
47.84					...
49.22					...
50.60					...
51.98					...
53.36					...
54.74					...
56.12					...
57.50					...
58.88					...
60.26					...
61.64					...
63.02					...
64.40					...
65.78					...
67.16					...
68.54					...
69.92					...
71.30					...
72.68					...
74.06					...
75.44					...
76.82					...
78.20					...
79.58					...
80.96					...
82.34					...
83.72					...
85.10					...
86.48					...
87.86					...
89.24					...
90.62					...
92.00					...
93.38					...
94.76					...
96.14					...
97.52					...
98.90					...
100.28					...
101.66					...
103.04					...
104.42					...
105.80					...
107.18					...
108.56					...
109.94					...
111.32					...
112.70					...
114.08					...
115.46					...
116.84					...
118.22					...
119.60					...
120.98					...
122.36					...
123.74					...
125.12					...
126.50					...
127.88					...
129.26					...
130.64					...
132.02					...
133.40					...
134.78					...
136.16					...
137.54					...
138.92					...
140.30					...
141.68					...
143.06					...
144.44					...
145.82					...
147.20					...
148.58					...
149.96					...
151.34					...
152.72					...
154.10					...
155.48					...
156.86					...
158.24					...
159.62					...
161.00					...

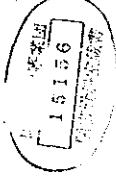
No. 1 - Core Drilling

100%

Dip: 10° - 15°



THE END OF HOLE



HOLE NO : LD16

AREA : LUBHUKU

DATE DRILLED : 28. NOV. 1984-14. JAN 1985

TOTAL DEPTH : 382.05m

ELEVATION : +272m

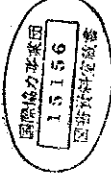
COORDINATE : X = 42,932,000, Y = -76,993

JAPAN INTERNATIONAL COOPERATION AGENCY

Borehole Log LD16

Scale 1:200
Date Recd. 1985
Revised by J. H. ...

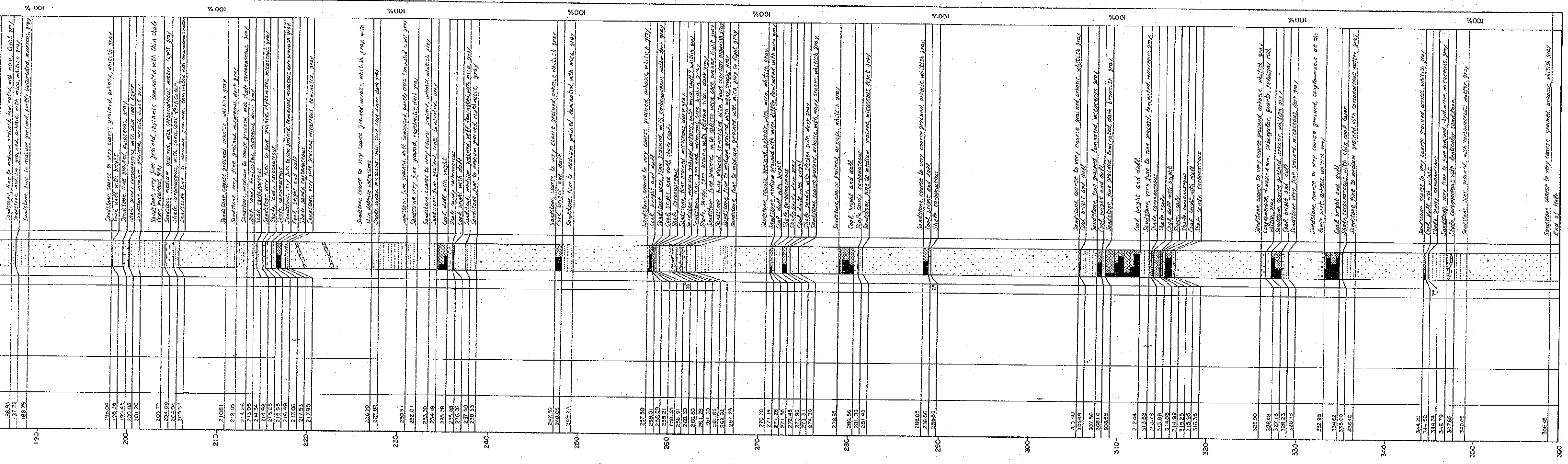
Depth of Borehole (M)	Apparent Thickness of Strata (M)	True Thickness of Strata (M)	Dip Column of Strata Section	Rock Description	Core Recovery
13.05				Sand and well-sorted sandstone	100%
15.05				Sandstone, medium grained, with thin siltstone part, heterolithic, medially, brownish grey, weathered, (C)H 1/2	100%
18.85				Sandstone, fine to medium grained, little laminated, with mica weathered, (C)H 1/2	100%
23.15				Sandstone, fine grained, partly laminated, with laminae, medially, weathered, (C)H 1/2	100%
23.37				Sandstone, medium grained, brownish, micaceous, grey, weathered, (C)H 1/2	100%
24.30				Sandstone, medium grained, brownish, micaceous, grey, weathered, (C)H 1/2	100%
28.00				Sandstone, medium to coarse grained, dark grey, weathered, (C)H 1/2	100%
28.70				Sandstone, medium grained, weathered, (C)H 1/2	100%
29.30				Sandstone, coarse grained, brownish, micaceous, weathered, (C)H 1/2	100%
31.00				Sandstone, medium grained, heterolithic, dark grey, weathered, (C)H 1/2	100%
32.42				Sandstone, coarse grained, brownish, micaceous, weathered, (C)H 1/2	100%
35.20				Sandstone, coarse grained, brownish, micaceous, weathered, (C)H 1/2	100%
36.56				Sandstone, fine grained, heterolithic, grey to dark grey, weathered, (C)H 1/2	100%
37.03				Sandstone, coarse grained, brownish, micaceous, weathered, (C)H 1/2	100%
40.05				Sandstone, coarse grained, brownish, micaceous, weathered, (C)H 1/2	100%
41.68				Sandstone, coarse grained, brownish, micaceous, weathered, (C)H 1/2	100%
43.85				Sandstone, coarse grained, brownish, micaceous, weathered, (C)H 1/2	100%
45.87				Sandstone, coarse grained, brownish, micaceous, weathered, (C)H 1/2	100%
46.37				Sandstone, coarse grained, brownish, micaceous, weathered, (C)H 1/2	100%
47.30				Sandstone, coarse grained, brownish, micaceous, weathered, (C)H 1/2	100%
49.25				Sandstone, medium grained, brownish, micaceous, weathered, (C)H 1/2	100%
49.91				Sandstone, coarse grained, brownish, micaceous, weathered, (C)H 1/2	100%
53.19				Sandstone, coarse grained, brownish, micaceous, weathered, (C)H 1/2	100%
53.95				Sandstone, coarse grained, brownish, micaceous, weathered, (C)H 1/2	100%
55.43				Sandstone, coarse grained, brownish, micaceous, weathered, (C)H 1/2	100%
58.87				Sandstone, coarse grained, brownish, micaceous, weathered, (C)H 1/2	100%
60.81				Sandstone, coarse grained, brownish, micaceous, weathered, (C)H 1/2	100%
65.21				Sandstone, coarse grained, brownish, micaceous, weathered, (C)H 1/2	100%
66.85				Sandstone, coarse grained, brownish, micaceous, weathered, (C)H 1/2	100%
68.24				Sandstone, coarse grained, brownish, micaceous, weathered, (C)H 1/2	100%
68.30				Sandstone, coarse grained, brownish, micaceous, weathered, (C)H 1/2	100%
68.59				Sandstone, coarse grained, brownish, micaceous, weathered, (C)H 1/2	100%
69.05				Sandstone, coarse grained, brownish, micaceous, weathered, (C)H 1/2	100%
69.17				Sandstone, coarse grained, brownish, micaceous, weathered, (C)H 1/2	100%
71.10				Sandstone, coarse grained, brownish, micaceous, weathered, (C)H 1/2	100%
72.54				Sandstone, coarse grained, brownish, micaceous, weathered, (C)H 1/2	100%
73.91				Sandstone, coarse grained, brownish, micaceous, weathered, (C)H 1/2	100%
75.71				Sandstone, coarse grained, brownish, micaceous, weathered, (C)H 1/2	100%
76.81				Sandstone, coarse grained, brownish, micaceous, weathered, (C)H 1/2	100%
78.47				Sandstone, coarse grained, brownish, micaceous, weathered, (C)H 1/2	100%
81.32				Sandstone, coarse grained, brownish, micaceous, weathered, (C)H 1/2	100%
83.90				Sandstone, coarse grained, brownish, micaceous, weathered, (C)H 1/2	100%
85.91				Sandstone, coarse grained, brownish, micaceous, weathered, (C)H 1/2	100%
86.46				Sandstone, coarse grained, brownish, micaceous, weathered, (C)H 1/2	100%
86.61				Sandstone, coarse grained, brownish, micaceous, weathered, (C)H 1/2	100%
87.57				Sandstone, coarse grained, brownish, micaceous, weathered, (C)H 1/2	100%
88.40				Sandstone, coarse grained, brownish, micaceous, weathered, (C)H 1/2	100%
88.55				Sandstone, coarse grained, brownish, micaceous, weathered, (C)H 1/2	100%
89.40				Sandstone, coarse grained, brownish, micaceous, weathered, (C)H 1/2	100%
90.21				Sandstone, coarse grained, brownish, micaceous, weathered, (C)H 1/2	100%
91.06				Sandstone, coarse grained, brownish, micaceous, weathered, (C)H 1/2	100%
92.69				Sandstone, coarse grained, brownish, micaceous, weathered, (C)H 1/2	100%
94.32				Sandstone, coarse grained, brownish, micaceous, weathered, (C)H 1/2	100%
95.17				Sandstone, coarse grained, brownish, micaceous, weathered, (C)H 1/2	100%
95.87				Sandstone, coarse grained, brownish, micaceous, weathered, (C)H 1/2	100%
97.60				Sandstone, coarse grained, brownish, micaceous, weathered, (C)H 1/2	100%
99.39				Sandstone, coarse grained, brownish, micaceous, weathered, (C)H 1/2	100%
99.18				Sandstone, coarse grained, brownish, micaceous, weathered, (C)H 1/2	100%
99.35				Sandstone, coarse grained, brownish, micaceous, weathered, (C)H 1/2	100%
102.07				Sandstone, coarse grained, brownish, micaceous, weathered, (C)H 1/2	100%
105.09				Sandstone, coarse grained, brownish, micaceous, weathered, (C)H 1/2	100%
107.26				Sandstone, coarse grained, brownish, micaceous, weathered, (C)H 1/2	100%
110.18				Sandstone, coarse grained, brownish, micaceous, weathered, (C)H 1/2	100%
110.77				Sandstone, coarse grained, brownish, micaceous, weathered, (C)H 1/2	100%
111.15				Sandstone, coarse grained, brownish, micaceous, weathered, (C)H 1/2	100%
111.80				Sandstone, coarse grained, brownish, micaceous, weathered, (C)H 1/2	100%
112.05				Sandstone, coarse grained, brownish, micaceous, weathered, (C)H 1/2	100%
112.65				Sandstone, coarse grained, brownish, micaceous, weathered, (C)H 1/2	100%
113.11				Sandstone, coarse grained, brownish, micaceous, weathered, (C)H 1/2	100%
113.55				Sandstone, coarse grained, brownish, micaceous, weathered, (C)H 1/2	100%
113.79				Sandstone, coarse grained, brownish, micaceous, weathered, (C)H 1/2	100%
114.26				Sandstone, coarse grained, brownish, micaceous, weathered, (C)H 1/2	100%
114.55				Sandstone, coarse grained, brownish, micaceous, weathered, (C)H 1/2	100%
115.25				Sandstone, coarse grained, brownish, micaceous, weathered, (C)H 1/2	100%
115.98				Sandstone, coarse grained, brownish, micaceous, weathered, (C)H 1/2	100%
116.88				Sandstone, coarse grained, brownish, micaceous, weathered, (C)H 1/2	100%
117.15				Sandstone, coarse grained, brownish, micaceous, weathered, (C)H 1/2	100%
117.44				Sandstone, coarse grained, brownish, micaceous, weathered, (C)H 1/2	100%
118.24				Sandstone, coarse grained, brownish, micaceous, weathered, (C)H 1/2	100%
118.84				Sandstone, coarse grained, brownish, micaceous, weathered, (C)H 1/2	100%



HOLE NO. : LD17
 AREA : LUBUKU
 DATE DRILLED : 14. NOV. 1984
 TOTAL DEPTH : 358.45m
 ELEVATION : +277 m
 COORDINATE : X = +2,932,000, Y = -78,000

APIAN INTERNATIONAL COOPERATION AGENCY
 Borehole Log LD17
 Well 43 Site 200
 Date Sep 1985 Prepared by S. Morimoto, M. Washino

Depth of Borehole (M)	Apparent Thickness of Strata (M)	True Thickness of Strata (M)	Dip of Column	Rock Description	Recovery
6.40				Soft and weathered red.	100%
7.82				Sandstone medium grained with mica, weathered, light brownish gray.	100%
7.95				Shale sandy, calcareous, weathered, brownish gray.	100%
8.30				Sandstone coarse grained, calcareous, weathered, light brownish gray.	100%
13.00				Sandstone medium grained, calcareous, weathered, light brownish gray.	100%
17.95				Sandstone coarse grained, calcareous, light brownish gray.	100%
20.70				Shale and sandstone medium grained, calcareous.	100%
22.06				Sandstone medium grained, calcareous, weathered, light gray.	100%
22.70				Shale and sandstone medium grained, calcareous, weathered, light gray.	100%
23.08				Sandstone medium grained, calcareous, weathered, light gray.	100%
23.15				Shale sandy, partly with mica, dark gray.	100%
23.28				Sandstone very fine grained, calcareous, light gray.	100%
28.12				Shale sandy, dark gray.	100%
28.15				Sandstone very fine grained, calcareous, light gray.	100%
33.17				Shale sandy, dark gray.	100%
33.30				Shale sandy, calcareous, light gray.	100%
45.13				Shale sandy, dark gray.	100%
45.24				Sandstone medium grained, calcareous, weathered, light gray.	100%
48.24			5°	Shale sandy, dark gray.	100%
48.78			5°	Sandstone with sandstone, medium grained, dark gray.	100%
49.18			5°	Sandstone medium grained, calcareous, weathered, light gray.	100%
49.67			5°	Sandstone fine to medium grained, calcareous, weathered, light gray.	100%
60.08			5°	Sandstone fine to medium grained, calcareous, weathered, light gray.	100%
61.29			5°	Sandstone very fine grained, calcareous, weathered, light gray.	100%
64.15				Sandstone medium grained, calcareous, weathered, light gray.	100%
67.77				Sandstone fine to medium grained, calcareous, weathered, light gray.	100%
74.00				Sandstone fine to medium grained, calcareous, weathered, light gray.	100%
77.06				Sandstone medium grained, calcareous, weathered, light gray.	100%
78.72				Sandstone coarse grained, calcareous, weathered, light gray.	100%
79.09				Sandstone medium grained, calcareous, weathered, light gray.	100%
80.90			0°	Sandstone fine to medium grained, calcareous, weathered, light gray.	100%
82.03				Sandstone medium grained, calcareous, weathered, light gray.	100%
82.19				Sandstone very fine grained, calcareous, weathered, light gray.	100%
84.94				Sandstone coarse grained, calcareous, weathered, light gray.	100%
88.48			5°	Sandstone fine to medium grained, calcareous, weathered, light gray.	100%
88.10			0°	Sandstone very fine grained, calcareous, weathered, light gray.	100%
88.42			0°	Sandstone medium grained, calcareous, weathered, light gray.	100%
91.12			0°	Sandstone fine to medium grained, calcareous, weathered, light gray.	100%
92.17			0°	Sandstone very fine grained, calcareous, weathered, light gray.	100%
92.75			0°	Sandstone very fine grained, calcareous, weathered, light gray.	100%
94.21			0°	Sandstone fine grained, calcareous, weathered, light gray.	100%
94.48			0°	Sandstone medium grained, calcareous, weathered, light gray.	100%
94.68			0°	Sandstone fine grained, calcareous, weathered, light gray.	100%
94.83			0°	Sandstone fine grained, calcareous, weathered, light gray.	100%
96.15			0°	Sandstone medium grained, calcareous, weathered, light gray.	100%
98.16			0°	Sandstone fine grained, calcareous, weathered, light gray.	100%
100.03			0°	Sandstone medium grained, calcareous, weathered, light gray.	100%
101.99			0°	Sandstone fine grained, calcareous, weathered, light gray.	100%
102.08			0°	Sandstone fine grained, calcareous, weathered, light gray.	100%
104.81			0°	Sandstone fine to medium grained, calcareous, weathered, light gray.	100%
105.20			0°	Sandstone very fine grained, calcareous, weathered, light gray.	100%
107.47			0°	Sandstone coarse grained, calcareous, weathered, light gray.	100%
108.61			0°	Sandstone medium grained, calcareous, weathered, light gray.	100%
112.47			0°	Sandstone coarse grained, calcareous, weathered, light gray.	100%
113.42			0°	Sandstone fine to medium grained, calcareous, weathered, light gray.	100%
113.90			0°	Sandstone medium grained, calcareous, weathered, light gray.	100%
114.50			0°	Sandstone medium grained, calcareous, weathered, light gray.	100%
114.65			0°	Sandstone very fine grained, calcareous, weathered, light gray.	100%
114.94			0°	Sandstone medium grained, calcareous, weathered, light gray.	100%
115.35			0°	Sandstone medium grained, calcareous, weathered, light gray.	100%
115.35			0°	Sandstone medium grained, calcareous, weathered, light gray.	100%
115.95			0°	Sandstone medium grained, calcareous, weathered, light gray.	100%
117.99			0°	Sandstone fine to medium grained, calcareous, weathered, light gray.	100%
120.85			0°	Sandstone medium grained, calcareous, weathered, light gray.	100%
121.65			0°	Sandstone fine grained, calcareous, weathered, light gray.	100%
122.02			0°	Sandstone fine grained, calcareous, weathered, light gray.	100%
122.49			0°	Sandstone fine grained, calcareous, weathered, light gray.	100%
122.86			0°	Sandstone medium grained, calcareous, weathered, light gray.	100%
123.30			0°	Sandstone medium grained, calcareous, weathered, light gray.	100%
124.94			0°	Sandstone medium grained, calcareous, weathered, light gray.	100%
125.94			0°	Sandstone fine to medium grained, calcareous, weathered, light gray.	100%
126.27			0°	Sandstone fine to medium grained, calcareous, weathered, light gray.	100%
131.07			0°	Sandstone coarse grained, calcareous, weathered, light gray.	100%
131.42			0°	Sandstone fine to medium grained, calcareous, weathered, light gray.	100%
132.70			0°	Sandstone medium grained, calcareous, weathered, light gray.	100%
133.25			0°	Sandstone medium grained, calcareous, weathered, light gray.	100%
134.97			0°	Sandstone coarse grained, calcareous, weathered, light gray.	100%
135.37			0°	Sandstone coarse grained, calcareous, weathered, light gray.	100%
135.78			0°	Sandstone coarse grained, calcareous, weathered, light gray.	100%
136.03			0°	Sandstone coarse grained, calcareous, weathered, light gray.	100%
136.89			0°	Sandstone coarse grained, calcareous, weathered, light gray.	100%
137.65			0°	Sandstone coarse grained, calcareous, weathered, light gray.	100%
138.90			0°	Sandstone coarse grained, calcareous, weathered, light gray.	100%
139.40			0°	Sandstone coarse grained, calcareous, weathered, light gray.	100%
140.10			0°	Sandstone coarse grained, calcareous, weathered, light gray.	100%
141.40			0°	Sandstone coarse grained, calcareous, weathered, light gray.	100%
141.80			0°	Sandstone coarse grained, calcareous, weathered, light gray.	100%
142.20			0°	Sandstone coarse grained, calcareous, weathered, light gray.	100%
142.70			0°	Sandstone coarse grained, calcareous, weathered, light gray.	100%
143.20			0°	Sandstone coarse grained, calcareous, weathered, light gray.	100%
143.30			0°	Sandstone coarse grained, calcareous, weathered, light gray.	100%
144.00			0°	Sandstone coarse grained, calcareous, weathered, light gray.	100%



186.95
187.32
188.79

190

196.54
198.78
200.68
201.68
201.80

200

201.74
202.00
202.06
202.12
202.18

210

210.81

212.06
213.31
213.56
214.34
214.92
215.25
215.39
215.53
216.08
217.53
217.90

210

226.99
227.82

230

232.51
232.81
233.36
234.19
235.28
237.06
237.40
237.60
238.35

240

247.70
248.06
249.33

250

257.59
258.01
258.29
258.56
258.91
259.90
261.14
261.45
261.83
262.02
262.29

260

272.76
273.14
273.52
273.88
274.25
274.45
274.59
274.93
274.99

270

283.85
284.06
284.27
284.45

280

286.65
286.86
287.07
287.25

290

296.65
298.65
298.93

300

305.45
305.89
307.86
308.10
308.25

310

312.44
313.53
313.78
313.88
314.02
314.32
315.25
315.55
316.35

320

326.50
326.68
327.13
328.23
328.98

330

332.98
334.62
335.00
336.40

340

344.20
344.50
344.74
345.79
347.68
348.05

350

356.49

360

100%

100%

100%

100%

100%

100%

100%

100%

100%

100%

100%

Sandstone, coarse to very coarse grained, arkose, whitish gray.
Coat bright and dull.

Sandstone, medium to coarse grained, arkose, whitish gray.
Coat bright and dull.

Sandstone, coarse to very coarse grained, arkose, whitish gray.
Coat bright and dull.

Sandstone, coarse to very coarse grained, arkose, whitish gray.
Coat bright and dull.

Sandstone, coarse to very coarse grained, arkose, whitish gray.
Coat bright and dull.

Sandstone, coarse to very coarse grained, arkose, whitish gray.
Coat bright and dull.

Sandstone, coarse to very coarse grained, arkose, whitish gray.
Coat bright and dull.

Sandstone, coarse to very coarse grained, arkose, whitish gray.
Coat bright and dull.

Sandstone, coarse to very coarse grained, arkose, whitish gray.
Coat bright and dull.

Sandstone, coarse to very coarse grained, arkose, whitish gray.
Coat bright and dull.

Sandstone, coarse to very coarse grained, arkose, whitish gray.
Coat bright and dull.

Sandstone, coarse to very coarse grained, arkose, whitish gray.
Coat bright and dull.

Sandstone, coarse to very coarse grained, arkose, whitish gray.
Coat bright and dull.

Sandstone, coarse to very coarse grained, arkose, whitish gray.
Coat bright and dull.

Sandstone, coarse to very coarse grained, arkose, whitish gray.
Coat bright and dull.

Sandstone, coarse to very coarse grained, arkose, whitish gray.
Coat bright and dull.

Sandstone, coarse to very coarse grained, arkose, whitish gray.
Coat bright and dull.

Sandstone, coarse to very coarse grained, arkose, whitish gray.
Coat bright and dull.

Sandstone, coarse to very coarse grained, arkose, whitish gray.
Coat bright and dull.

Sandstone, coarse to very coarse grained, arkose, whitish gray.
Coat bright and dull.

Sandstone, coarse to very coarse grained, arkose, whitish gray.
Coat bright and dull.

Sandstone, coarse to very coarse grained, arkose, whitish gray.
Coat bright and dull.

Sandstone, coarse to very coarse grained, arkose, whitish gray.
Coat bright and dull.

Sandstone, coarse to very coarse grained, arkose, whitish gray.
Coat bright and dull.

Sandstone, coarse to very coarse grained, arkose, whitish gray.
Coat bright and dull.

Sandstone, coarse to very coarse grained, arkose, whitish gray.
Coat bright and dull.

Sandstone, coarse to very coarse grained, arkose, whitish gray.
Coat bright and dull.

Sandstone, coarse to very coarse grained, arkose, whitish gray.
Coat bright and dull.

Sandstone, coarse to very coarse grained, arkose, whitish gray.
Coat bright and dull.

Sandstone, coarse to very coarse grained, arkose, whitish gray.
Coat bright and dull.



HOLE NO. : LD18
 AREA : LUBHUKU
 DATE DRILLED : 2. NOV. 1984-17 NOV. 1984
 TOTAL DEPTH : 382.45m
 ELEVATION : +289 m
 COORDINATE : X=+2,931,999Y =79,000

JAPAN INTERNATIONAL COOPERATION AGENCY
 Borehole Log LD18
 Scale: 4r, 1:200
 Date: Sep 1985 (Printed by S. Wakano, K. Wakabayashi)

Depth Borehole (M)	Apparent Thickness Strata (M)	True Thickness of Strata (M)	Dip of Strata Section	Core Recovery	Rock Description
5.00				100%	Soft and weathered sandstone
6.10				100%	Sandstone, medium grained, calcareous, weathered, light brownish grey
6.25				100%	Shale, sandy, laminated, weathered, dark brownish grey
6.75				100%	Sandstone, medium grained, calcareous, weathered, light brownish grey
7.30				100%	Shale, sandy, laminated, weathered, dark brownish grey
8.00				100%	Sandstone, medium grained, calcareous, weathered, light brownish grey
12.00				100%	Sandstone, medium grained, calcareous, weathered, light brownish grey
12.30				100%	Shale, sandy, laminated, weathered, dark brownish grey
14.30				100%	Sandstone, medium grained, calcareous, weathered, light brownish grey
15.36				100%	Sandstone, fine grained, calcareous, weathered, light brownish grey
17.28				100%	Sandstone, medium grained, calcareous, weathered, light brownish grey
18.33				100%	Sandstone, fine grained, calcareous, weathered, light brownish grey
20.37			X X	100%	Shale, sandy, laminated, weathered, dark brownish grey
22.75			X X	100%	Shale, sandy, laminated, weathered, dark brownish grey
22.85				100%	Sandstone, coarse grained, calcareous, weathered, light brownish grey
22.70				100%	Sandstone, medium grained, calcareous, weathered, light brownish grey
25.62				100%	Sandstone, medium grained, calcareous, weathered, light brownish grey
26.25				100%	Sandstone, medium grained, calcareous, weathered, light brownish grey
29.17				100%	Shale, sandy, laminated, weathered, dark brownish grey
29.70				100%	Sandstone, medium grained, calcareous, weathered, light brownish grey
31.20				100%	Shale, sandy, laminated, weathered, dark brownish grey
33.76				100%	Shale, sandy, laminated, weathered, dark brownish grey
33.53				100%	Sandstone, medium grained, calcareous, weathered, light brownish grey
40.68				100%	Shale, sandy, dark grey
40.96				100%	Sandstone, coarse grained, calcareous, weathered, light brownish grey
41.18				100%	Shale, sandy, laminated, weathered, dark brownish grey
60.10				100%	Shale, sandy, laminated, weathered, dark grey
61.31				100%	Sandstone, coarse grained, calcareous, weathered, light brownish grey
64.75				100%	Shale, sandy, laminated, weathered, dark grey
64.86				100%	Shale, sandy, laminated, weathered, dark grey
68.88				100%	Shale, sandy, laminated, weathered, dark grey
73.32				100%	Sandstone, medium grained, calcareous, weathered, light grey
79.13				100%	Sandstone, fine to medium grained, calcareous, weathered, light grey
79.86				100%	Sandstone, coarse to medium grained, calcareous, weathered, light grey
83.40				100%	Sandstone, fine to medium grained, calcareous, weathered, light grey
85.75				100%	Sandstone, medium grained, calcareous, weathered, light grey
86.11				100%	Sandstone, coarse grained, calcareous, weathered, light grey
88.62				100%	Sandstone, medium grained, calcareous, weathered, light grey
91.09				100%	Sandstone, coarse grained, calcareous, weathered, light grey
93.81				100%	Sandstone, fine grained, calcareous, weathered, light grey
95.15				100%	Sandstone, coarse to medium grained, calcareous, weathered, light grey
100.91				100%	Sandstone, fine grained, calcareous, weathered, light grey
101.84				100%	Sandstone, coarse grained, calcareous, weathered, light grey
102.19				100%	Sandstone, fine grained, calcareous, weathered, light grey
103.86				100%	Sandstone, fine grained, calcareous, weathered, light grey
105.41				100%	Sandstone, coarse grained, calcareous, weathered, light grey
105.48				100%	Sandstone, fine to medium grained, calcareous, weathered, light grey
106.16				100%	Sandstone, coarse grained, calcareous, weathered, light grey
107.72				100%	Sandstone, coarse grained, calcareous, weathered, light grey
110.75				100%	Sandstone, fine grained, calcareous, weathered, light grey
112.35			9°	100%	Shale, sandy, laminated, weathered, dark grey
117.21				100%	Sandstone, fine grained, calcareous, weathered, light grey
121.35				100%	Shale, sandy and weathered, calcareous, weathered, light brownish grey
121.61				100%	Shale, sandy, laminated, weathered, dark grey
122.62			6°	100%	Sandstone, coarse grained, calcareous, weathered, light grey
124.91				100%	Shale, sandy, calcareous, weathered, dark grey
127.31				100%	Sandstone, fine grained, calcareous, weathered, light grey
127.63				100%	Sandstone, coarse grained, calcareous, weathered, light grey
128.37				100%	Shale, sandy, calcareous, weathered, dark grey
129.56				100%	Sandstone, medium to coarse grained, calcareous, weathered, light grey
131.26				100%	Sandstone, fine grained, calcareous, weathered, light grey
132.32				100%	Sandstone, medium grained, calcareous, weathered, light grey
133.48				100%	Sandstone, medium grained, calcareous, weathered, light grey
136.88				100%	Sandstone, coarse grained, calcareous, weathered, light grey
138.17			0°	100%	Sandstone, fine grained, calcareous, weathered, light grey
147.10				100%	Coarse, fine grained, calcareous, weathered, light grey

217.06	Conditions, iron to medium ground, arsenic, partly brownish gray to light gray.
218.84	Conditions, medium to coarse, massive, darkish, with mica, whitish gray.
219.05	Shale, sandy, with mica, dark gray.
219.40	Conditions, coarse, ground, arsenic, with mica, whitish gray.
220.83	Conditions, very coarse, rounded, iron, brownish, arsenic, with mica, light gray and dark.
222.70	Conditions, coarse, rounded, iron, brownish, arsenic, with mica, light gray.
223.91	Conditions, coarse, rounded, iron, brownish, arsenic, with mica, light gray.
224.81	Shale, bedded, thin, weathered, dark gray.
231.97	Conditions, iron to medium ground, arsenic, rounded, brownish, white.
232.85	Conditions, iron to medium ground, arsenic, rounded, brownish, white.
234.32	Shale, partly with, feldspar, sandstone, dark gray.
237.59	Conditions, medium, ground, arsenic, with mica, light gray, brownish, white.
238.73	Shale, sandy, dark gray.
240.96	Conditions, medium, ground, arsenic, with mica, whitish gray.
241.11	Conditions, medium, ground, arsenic, with mica, whitish gray.
242.09	Conditions, coarse, rounded, iron, brownish, arsenic, with mica, light gray.
242.70	Conditions, coarse, rounded, iron, brownish, arsenic, with mica, light gray.
243.36	Conditions, coarse, rounded, iron, brownish, arsenic, with mica, light gray.
243.96	Conditions, coarse, rounded, iron, brownish, arsenic, with mica, light gray.
244.76	Conditions, coarse, rounded, iron, brownish, arsenic, with mica, light gray.
245.30	Conditions, coarse, rounded, iron, brownish, arsenic, with mica, light gray.
247.28	Shale, sandy, brownish, white.
247.59	Shale, sandy, brownish, white.
248.25	Conditions, iron to medium ground, arsenic, rounded, brownish, white.
248.41	Conditions, iron to medium ground, arsenic, rounded, brownish, white.
251.52	Conditions, iron to medium ground, arsenic, rounded, brownish, white.
272.09	Conditions, iron to medium ground, arsenic, rounded, brownish, white.
272.62	Conditions, iron to medium ground, arsenic, rounded, brownish, white.
274.04	Conditions, iron to medium ground, arsenic, rounded, brownish, white.
274.81	Conditions, iron to medium ground, arsenic, rounded, brownish, white.
283.27	Conditions, iron to medium ground, arsenic, rounded, brownish, white.
284.05	Conditions, iron to medium ground, arsenic, rounded, brownish, white.
284.41	Conditions, iron to medium ground, arsenic, rounded, brownish, white.
285.80	Conditions, iron to medium ground, arsenic, rounded, brownish, white.
288.72	Conditions, iron to medium ground, arsenic, rounded, brownish, white.
293.34	Conditions, iron to medium ground, arsenic, rounded, brownish, white.
293.49	Conditions, iron to medium ground, arsenic, rounded, brownish, white.
297.78	Conditions, iron to medium ground, arsenic, rounded, brownish, white.
297.90	Conditions, iron to medium ground, arsenic, rounded, brownish, white.
298.22	Conditions, iron to medium ground, arsenic, rounded, brownish, white.
300.09	Conditions, iron to medium ground, arsenic, rounded, brownish, white.
301.41	Conditions, iron to medium ground, arsenic, rounded, brownish, white.
304.11	Conditions, iron to medium ground, arsenic, rounded, brownish, white.
304.68	Conditions, iron to medium ground, arsenic, rounded, brownish, white.
305.89	Conditions, iron to medium ground, arsenic, rounded, brownish, white.
309.09	Conditions, iron to medium ground, arsenic, rounded, brownish, white.
309.22	Conditions, iron to medium ground, arsenic, rounded, brownish, white.
309.36	Conditions, iron to medium ground, arsenic, rounded, brownish, white.
310.11	Conditions, iron to medium ground, arsenic, rounded, brownish, white.
310.69	Conditions, iron to medium ground, arsenic, rounded, brownish, white.
316.61	Conditions, iron to medium ground, arsenic, rounded, brownish, white.
318.47	Conditions, iron to medium ground, arsenic, rounded, brownish, white.
321.05	Conditions, iron to medium ground, arsenic, rounded, brownish, white.
322.80	Conditions, iron to medium ground, arsenic, rounded, brownish, white.
323.89	Conditions, iron to medium ground, arsenic, rounded, brownish, white.
326.21	Conditions, iron to medium ground, arsenic, rounded, brownish, white.
327.02	Conditions, iron to medium ground, arsenic, rounded, brownish, white.
338.40	Conditions, iron to medium ground, arsenic, rounded, brownish, white.
338.67	Conditions, iron to medium ground, arsenic, rounded, brownish, white.
338.84	Conditions, iron to medium ground, arsenic, rounded, brownish, white.
339.74	Conditions, iron to medium ground, arsenic, rounded, brownish, white.
340.24	Conditions, iron to medium ground, arsenic, rounded, brownish, white.
342.84	Conditions, iron to medium ground, arsenic, rounded, brownish, white.
346.48	Conditions, iron to medium ground, arsenic, rounded, brownish, white.
347.70	Conditions, iron to medium ground, arsenic, rounded, brownish, white.
348.84	Conditions, iron to medium ground, arsenic, rounded, brownish, white.
348.90	Conditions, iron to medium ground, arsenic, rounded, brownish, white.
348.86	Conditions, iron to medium ground, arsenic, rounded, brownish, white.
350.02	Conditions, iron to medium ground, arsenic, rounded, brownish, white.
350.74	Conditions, iron to medium ground, arsenic, rounded, brownish, white.
361.44	Conditions, iron to medium ground, arsenic, rounded, brownish, white.
362.44	Conditions, iron to medium ground, arsenic, rounded, brownish, white.
363.65	Conditions, iron to medium ground, arsenic, rounded, brownish, white.
364.01	Conditions, iron to medium ground, arsenic, rounded, brownish, white.
367.21	Conditions, iron to medium ground, arsenic, rounded, brownish, white.
367.65	Conditions, iron to medium ground, arsenic, rounded, brownish, white.
368.74	Conditions, iron to medium ground, arsenic, rounded, brownish, white.
369.79	Conditions, iron to medium ground, arsenic, rounded, brownish, white.
370.21	Conditions, iron to medium ground, arsenic, rounded, brownish, white.
371.81	Conditions, iron to medium ground, arsenic, rounded, brownish, white.
372.36	Conditions, iron to medium ground, arsenic, rounded, brownish, white.
374.06	Conditions, iron to medium ground, arsenic, rounded, brownish, white.
374.68	Conditions, iron to medium ground, arsenic, rounded, brownish, white.
375.08	Conditions, iron to medium ground, arsenic, rounded, brownish, white.
375.62	Conditions, iron to medium ground, arsenic, rounded, brownish, white.
382.45	Conditions, iron to medium ground, arsenic, rounded, brownish, white.

End of book.

HOLE NO : LD19
 AREA : LUBHIKU
 DATE DRILLED : 10 DEC 1984 ~ 12 JAN 1985
 TOTAL DEPTH : 432.85m
 ELEVATION : +251m
 COORDINATE : X = +2,932,000, Y = -79,988

JAPAN INTERNATIONAL COOPERATION AGENCY
 Borehole Log LD19
 Scale 1:200
 Drawn Sep 1989 Prepared by H. Iwamoto, Y. Watanabe

Depth of Borehole (M)	Apparent Thickness of Strata (M)	True Thickness of Strata (M)		Dip of Strata Section	Column of Strata	Rock Description	Core Recovery
		Strata (M)	Strata (M)				
0	0						non-coring
4.30						Sh. silt.	
20.10						Shale, medium to coarse grained, with thin clay partings, dark grey.	100%
20.30						Shale, sandy, laminated, dark grey.	
22.38						Shale, sandy, laminated, with thin clay partings, dark grey.	
22.75						Shale, sandy, laminated, dark grey.	
24.11						Shale, sandy, laminated, with thin clay partings, dark grey.	
24.30						Sandstone, medium to coarse grained, with thin clay partings, dark grey.	
24.30						Sandstone, medium to coarse grained, with thin clay partings, dark grey.	
25.35						Shale, sandy, laminated, dark grey.	
32.75						Dolomite, fine grained, with thin clay partings, white to light grey.	
36.35						Sandstone, coarse grained, with thin clay partings, light grey.	
44.03						Sandstone, coarse grained, with thin clay partings, light grey.	
45.11						Shale, carbonaceous, thin coal beds at the top.	
46.53						Shale, carbonaceous, thin coal beds at the top.	
46.75						Shale, carbonaceous, thin coal beds at the top.	
47.45						Sandstone, very fine grained, light grey.	
50.41						Sandstone, medium to coarse grained, with thin clay partings, light grey.	
51.58						Shale, sandy, laminated, dark grey.	
52.85						Shale, sandy, laminated, with thin clay partings, dark grey.	
53.80						Sandstone, very fine grained, light grey.	
54.35						Sandstone, very fine grained, light grey.	
54.95						Sandstone, coarse grained, with thin clay partings, light grey.	
55.60						Sandstone, very fine grained, light grey.	
59.75						Sandstone, coarse grained, with thin clay partings, light grey.	
61.54						Sandstone, very fine grained, light grey.	
63.75						Shale, carbonaceous, thin coal beds at the top.	
64.35						Shale, carbonaceous, thin coal beds at the top.	
65.32						Sandstone, very fine grained, light grey.	
66.56						Shale, sandy, partly, with thin clay partings, light grey.	
71.30						Sandstone, coarse grained, with thin clay partings, light grey.	
72.80						Dolomite, fine grained, with thin clay partings, light grey.	
73.32						Dolomite, very fine grained, light grey.	
73.51						Sandstone, very fine grained, light grey.	
75.90						Dolomite, very fine grained, with thin clay partings, light grey.	
77.60						Sandstone, very fine grained, light grey.	
80.35						Dolomite, fine grained, with thin clay partings, light grey.	
80.70						Sandstone, very fine grained, light grey.	
82.15						Dolomite, very fine grained, with thin clay partings, light grey.	
84.50						Dolomite, very fine grained, with thin clay partings, light grey.	
87.15						Dolomite, very fine grained, with thin clay partings, light grey.	
89.05						Dolomite, coarse grained, light grey.	
91.15						Dolomite, very fine grained, with thin clay partings, light grey.	
94.00						Dolomite, medium grained, with thin clay partings, light grey.	
94.70						Dolomite, very fine grained, with thin clay partings, light grey.	
100.10						Dolomite, medium grained, with thin clay partings, light grey.	
102.24						Dolomite, very fine grained, with thin clay partings, light grey.	
104.13						Dolomite, medium grained, with thin clay partings, light grey.	
106.73						Dolomite, very fine grained, with thin clay partings, light grey.	
107.80						Shale, sandy, with thin clay partings, light grey.	
117.40						Shale, sandy, laminated, dark grey.	
119.35						Dolomite, very fine grained, light grey.	
120.34						Shale, sandy, laminated, dark grey.	
120.64						Dolomite, very fine grained, light grey.	
121.80						Shale, sandy, laminated, dark grey.	
122.70						Sandstone, medium to coarse grained, with thin clay partings, light grey.	
123.80						Shale, sandy, laminated, dark grey.	
124.40						Shale, sandy, laminated, dark grey.	
131.57						Sandstone, medium to coarse grained, with thin clay partings, light grey.	
137.85						Shale, partly with thin clay partings, light grey.	
139.20						Sandstone, medium grained, with thin clay partings, light grey.	
141.70						Dolomite, fine to medium grained, light grey.	
143.20						Sandstone, very fine grained, with thin clay partings, light grey.	
144.48						Dolomite, very fine grained, light grey.	

