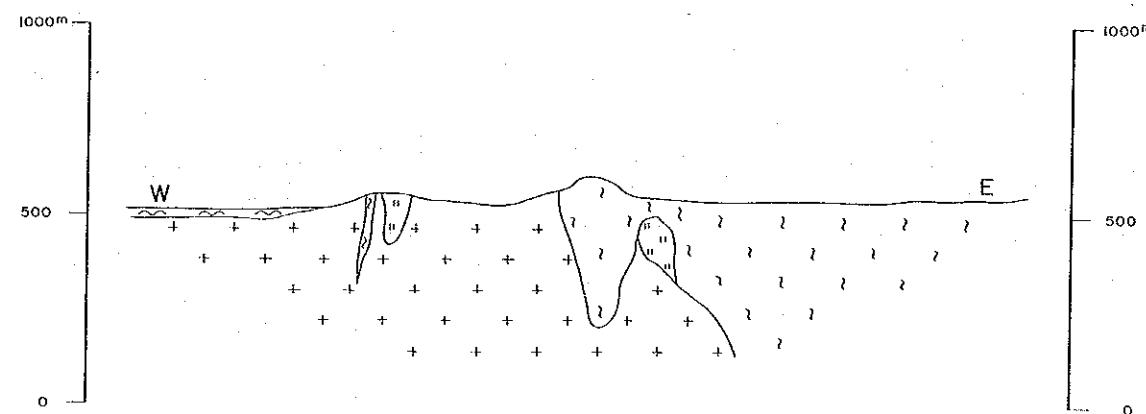


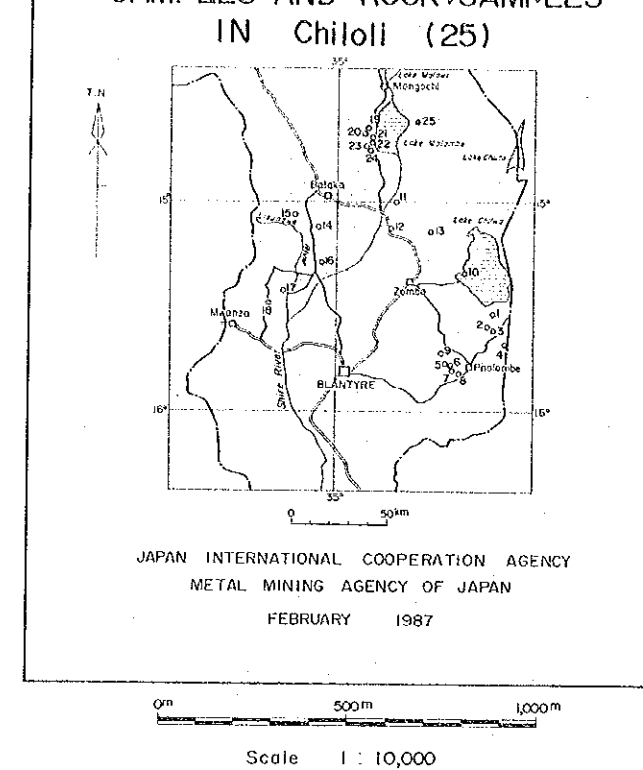
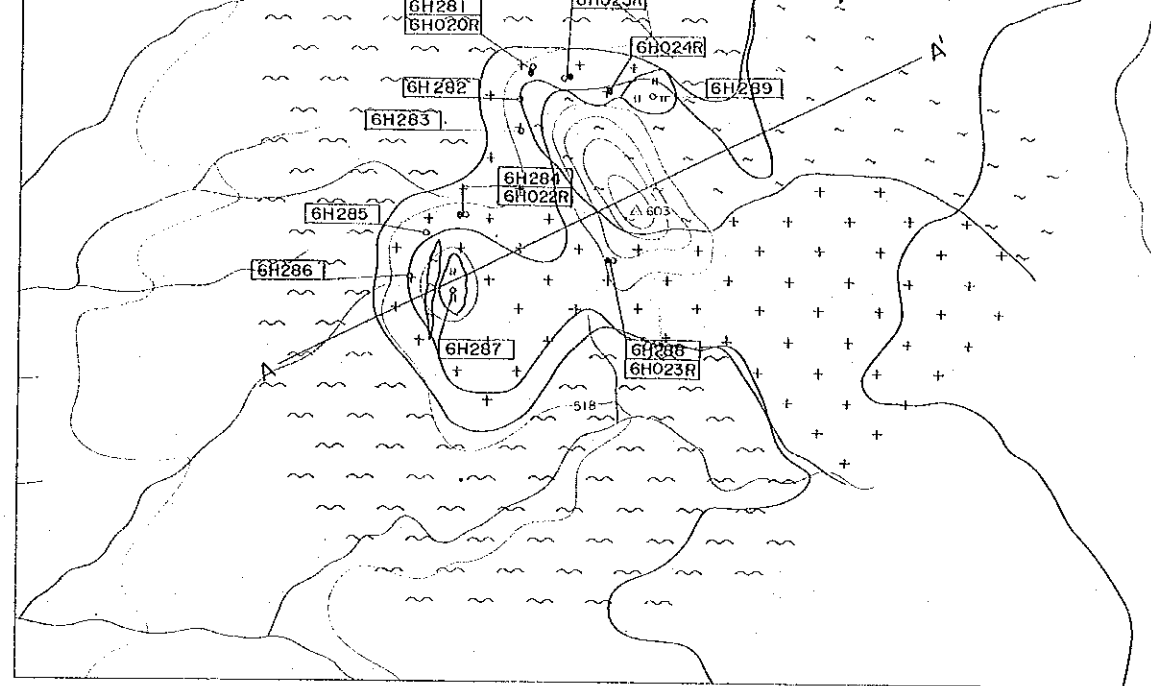
A-A' Section
 (N65E)



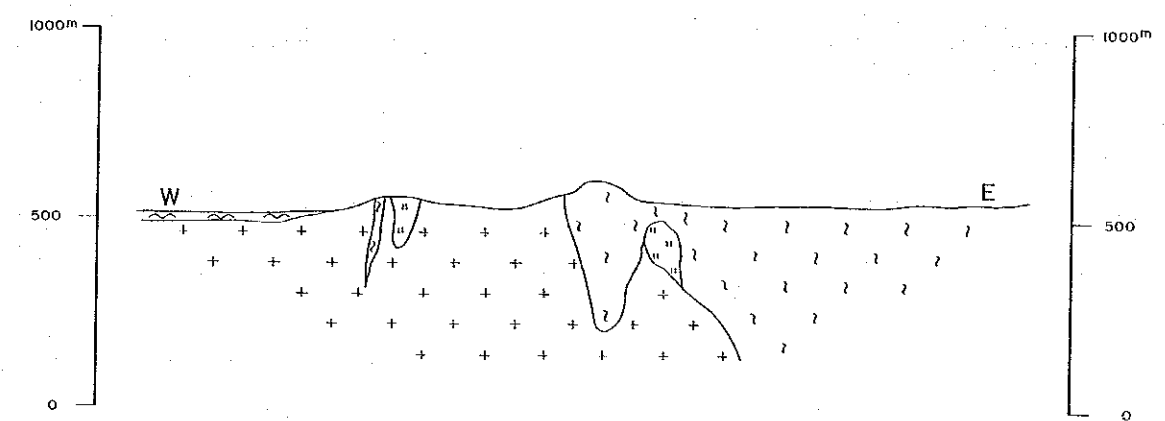
LEGEND

- Drift
 - Sideritic carbonatite
 - Ankeritic sövite
 - Sövite
 - Carbonate-Silicate rock
 - Feldspathic breccia, agglomerate
 - Phonolitic breccia
 - Fertilized gneiss
 - Trachyte
 - Phonolite
 - Nephelinite
 - Syenite (Pulaskite)
 - Nepheline syenite (Foyaite)
 - Hornblende biotite-gneiss
 - Granulite and gneissose granite
 - Dolomitic marble
 - Dolerite
 - Granite
 - Perthosite
 - Biotite-metapyroxenite, metagabbro & biotite
 - Meta conglomerate
 - Green pyroxene skarn
 - Dykes and plugs
- T - Trachyte
 P - Phonolite
 N - Nephelinite
 MF - Microfoyaite
 S - Sövsbergite
 I - Ijolite
 D - Dolerite
 M - Monchiquite
 A - Aplitite

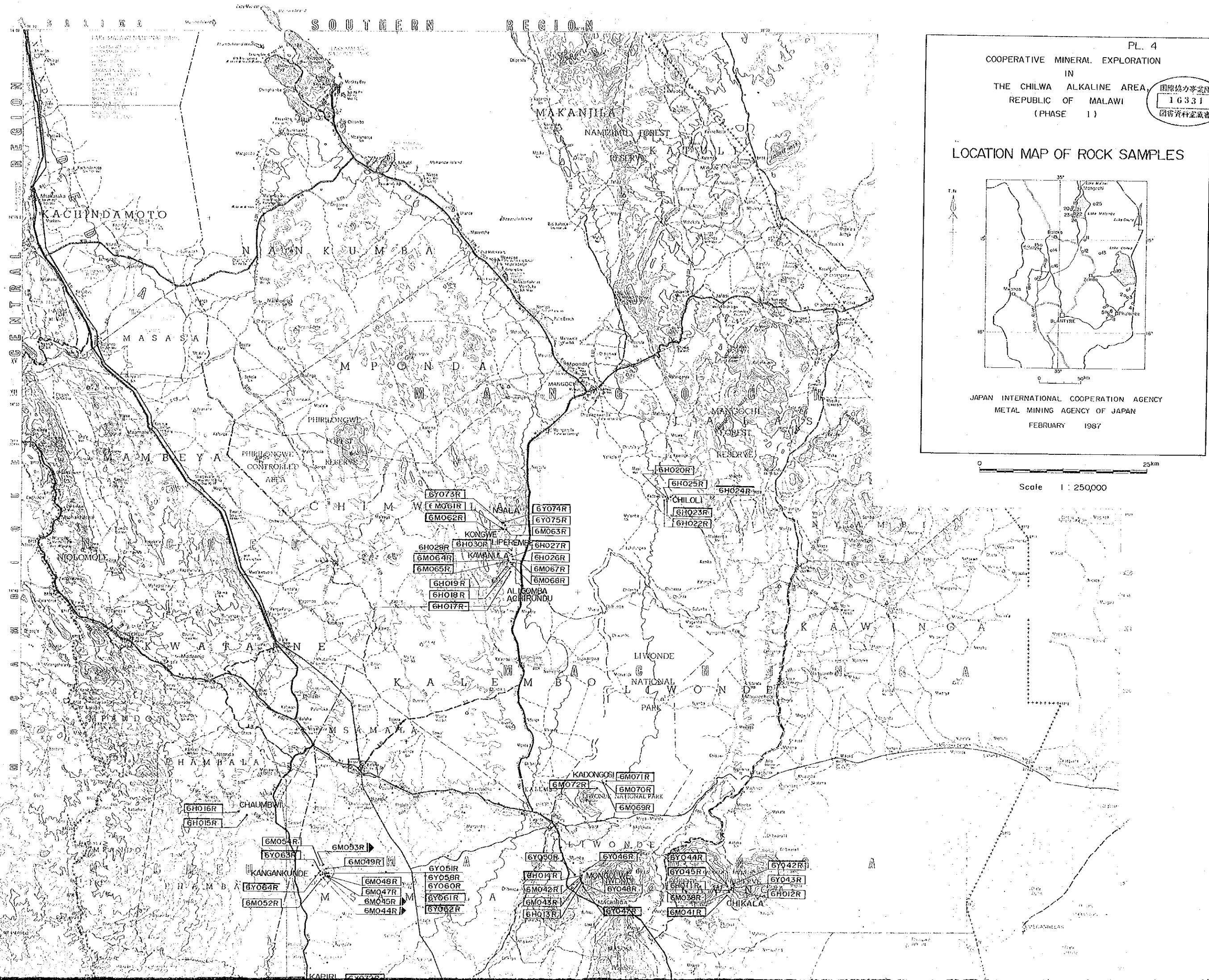
Fault



**A-A' Section
(N65E)**



- LEGEND**
- Drift
 - Sideritic carbonatite
 - Ankeritic sövite
 - Sövite
 - Carbonate-Silicate rock
 - Feldspathic breccia, agglomerate
 - Phonolitic breccia
 - Fenitized gneiss
 - Trachyte
 - Phonolite
 - Nephelinite
 - Syenite (Fulaskite)
 - Nepheline syenite (Foyaite)
 - Hornblende biotite-gneiss
 - Granulite and gneissose granite
 - Dolomitic marble
 - Dolerite
 - Granite
 - Perthosite
 - Biotite-metapyroxenite, metagabbro & biotite
 - Meta conglomerate
 - Green pyroxene skarn
 - Dykes and plugs
- T - Trachyte
 - P - Phonolite
 - N - Nephelinite
 - MF - Microfoyaite
 - S - Sövsbergite
 - I - Ijolite
 - D - Dolerite
 - M - Monchiquite
 - A - Aplite
- Fault
 - Dip of foliation of gneiss
- 6Y001 GEOCHEMICAL SAMPLES
 - 6Y001R ROCK SAMPLES



PL. 4

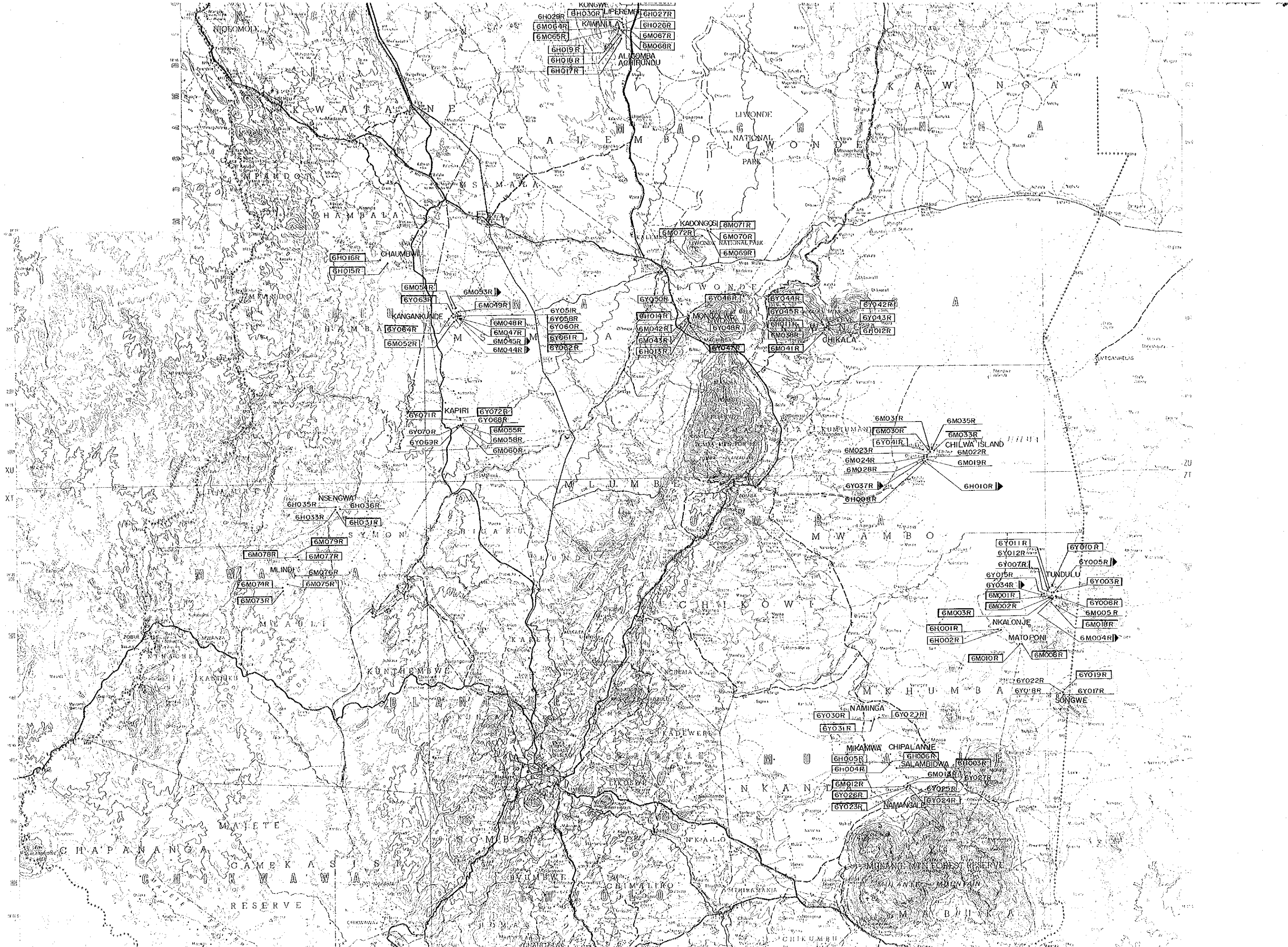
COOPERATIVE MINERAL EXPLORATION
IN
THE CHILWA ALKALINE AREA,
REPUBLIC OF MALAWI
(PHASE 1)

16331
国際協力事業団
図書資料室蔵書

LOCATION MAP OF ROCK SAMPLES

JAPAN INTERNATIONAL COOPERATION AGENCY
METAL MINING AGENCY OF JAPAN
FEBRUARY 1987

Scale 1 : 250,000



6H026R
6M064R
6M065R
6H019R
6H018R
6H017R

6H030R
KAWANLLA
6H027R
6M067R
6M066R

ALISOMBA
ACHIRUNDU

LIWONDE
NATIONAL
PARK

KADONGOSI
6M071R
6M072R
6M069R

6H016R
CHAUMBWI
6H015R

6M058R
6Y063R
6M049R
6Y051R
6Y058R
6Y060R
6Y061R
6Y062R
6M048R
6M047R
6M045R
6M052R
6M044R

6Y050R
6H014R
6M042R
6M043R
6H013R
6Y046R
6Y048R
6Y044R
6Y045R
6H011R
6M038R
6M041R
6Y047R
6Y043R
6H012R

6Y071R
6Y070R
6Y069R
6Y072R
6Y068R
6M055R
6M056R
6M060R

6M037R
6M030R
6Y041R
6M023R
6M024R
6M028R
6Y037R
6H008R
6M035R
6M033R
CHILWA ISLAND
6M022R
6M019R
6H010R

6H035R
6H036R
6H033R
6H031R

6M078R
6M077R
6M076R
6M071R
6M075R
6M073R

6Y011R
6Y012R
6Y007R
6Y015R
6Y034R
6M001R
6M002R
6M003R
6H001R
6H002R
6M010R
6M008R
6Y010R
6Y005R
6Y003R
6Y006R
6M005R
6M018R
6M004R

6M079R
6M076R
6M075R

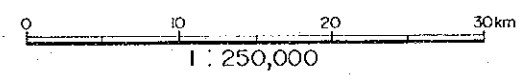
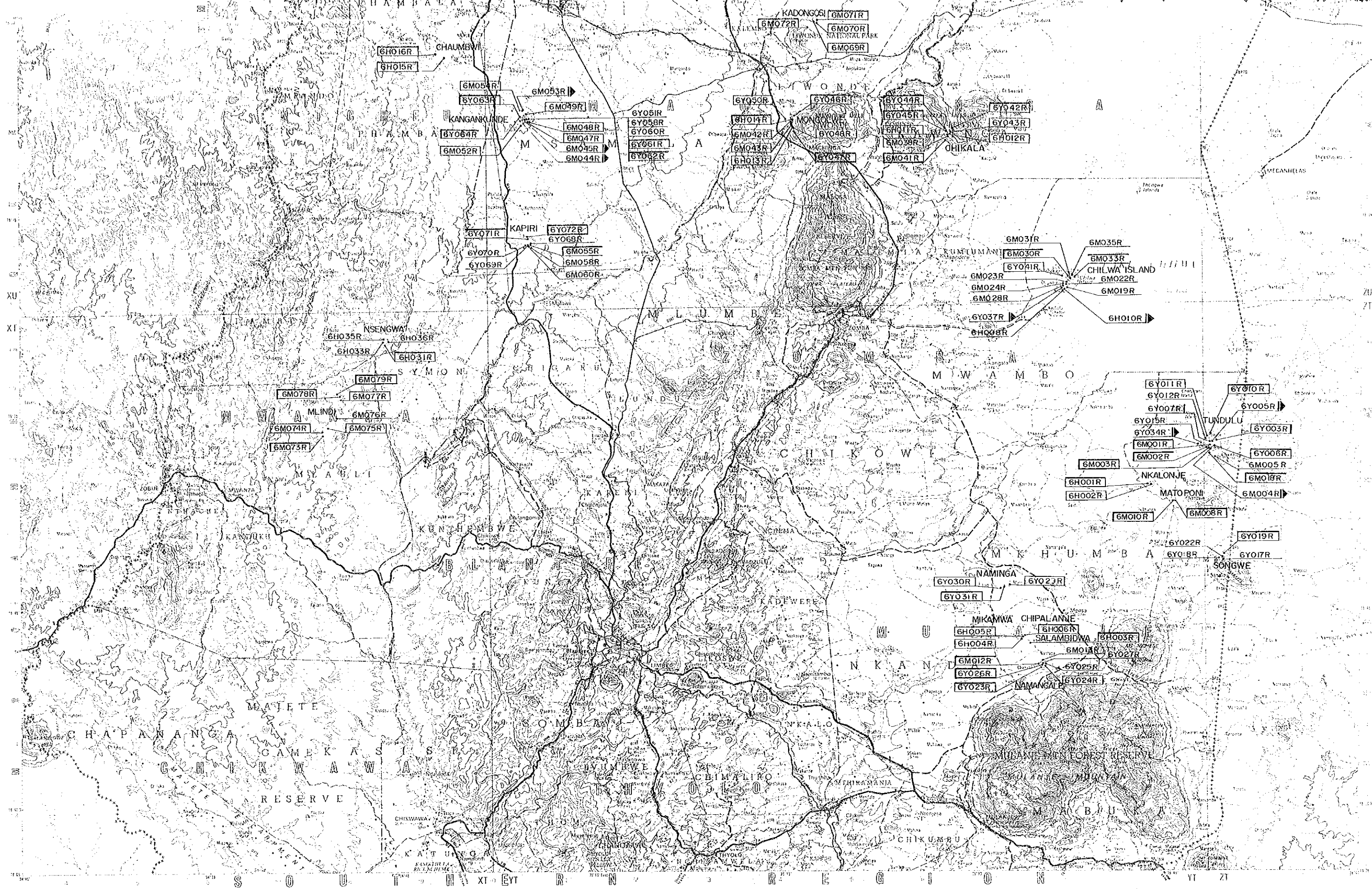
6Y030R
6Y031R
6Y022R

6H005R
6H004R
6M012R
6Y026R
6Y023R
6H006R
SALAMBIDWA
6H003R
6M018R
6Y027R
6Y025R
6Y024R
NAMANGA

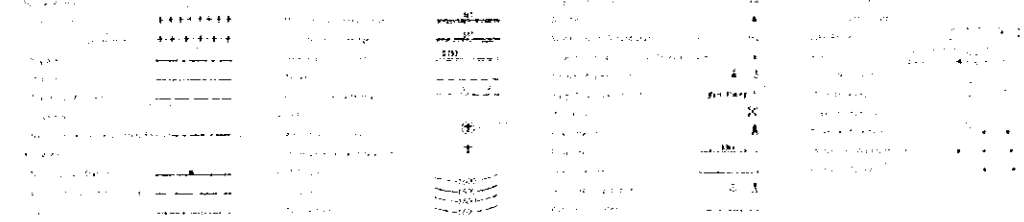
6Y022R
6Y019R
6Y017R
SONGWE

MAJETE
CHAPANANGA
GAMEKASISI
RESERVE

MUKAMWA
CHIPALANJE
6H006R
SALAMBIDWA
6H003R
6M018R
6Y027R
6Y025R
6Y024R
NAMANGA



LILONGWE
Blantyre
MCHINJI
Chikwawa
KATUNGA



LEGEND

- 6Y001R Sample No and sampling point
- 6Y001R Whole rock analysis
- 6Y001R Age determination by K-Ar method
- 6Y001R Sample for thin section
- 6Y001R Sample for polished section
- 6Y001R Sample for X-ray analysis
- 6Y001R Sample for EPMA

