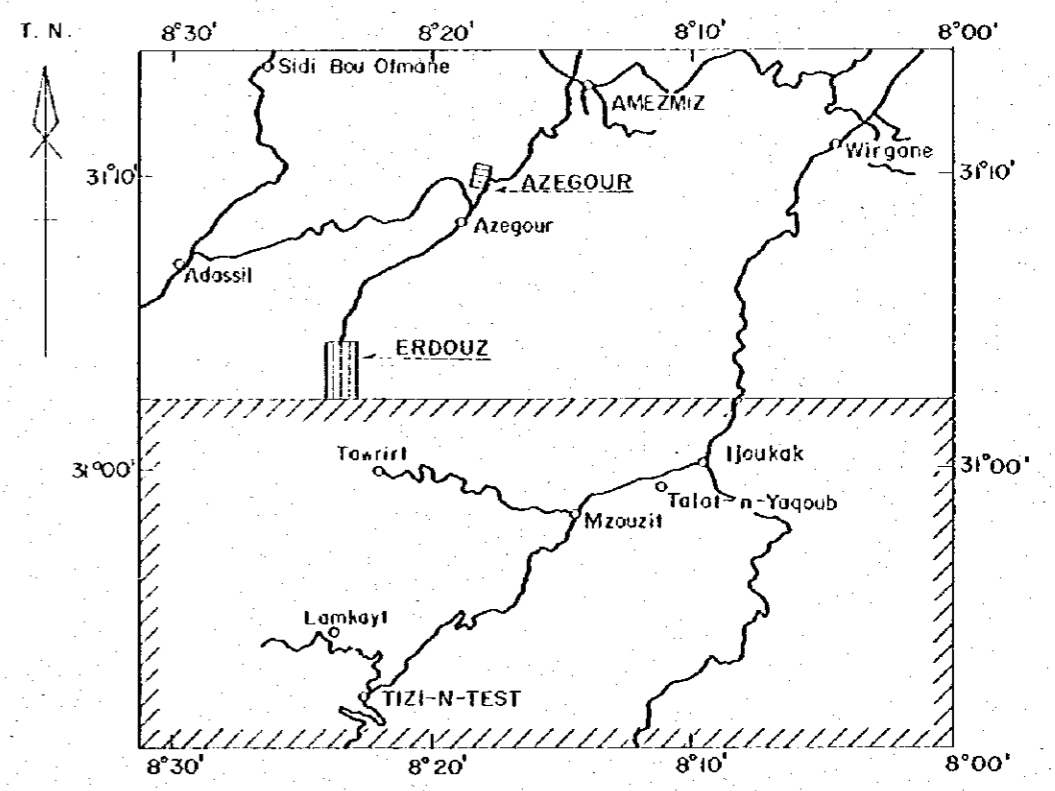


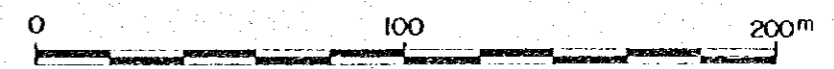
国際協力事業団
11637
図書資料室蔵書

GEOLOGICAL SURVEY
OF
HAUT ATLAS OCCIDENTAL AREA, MOROCCO
(PHASE II)

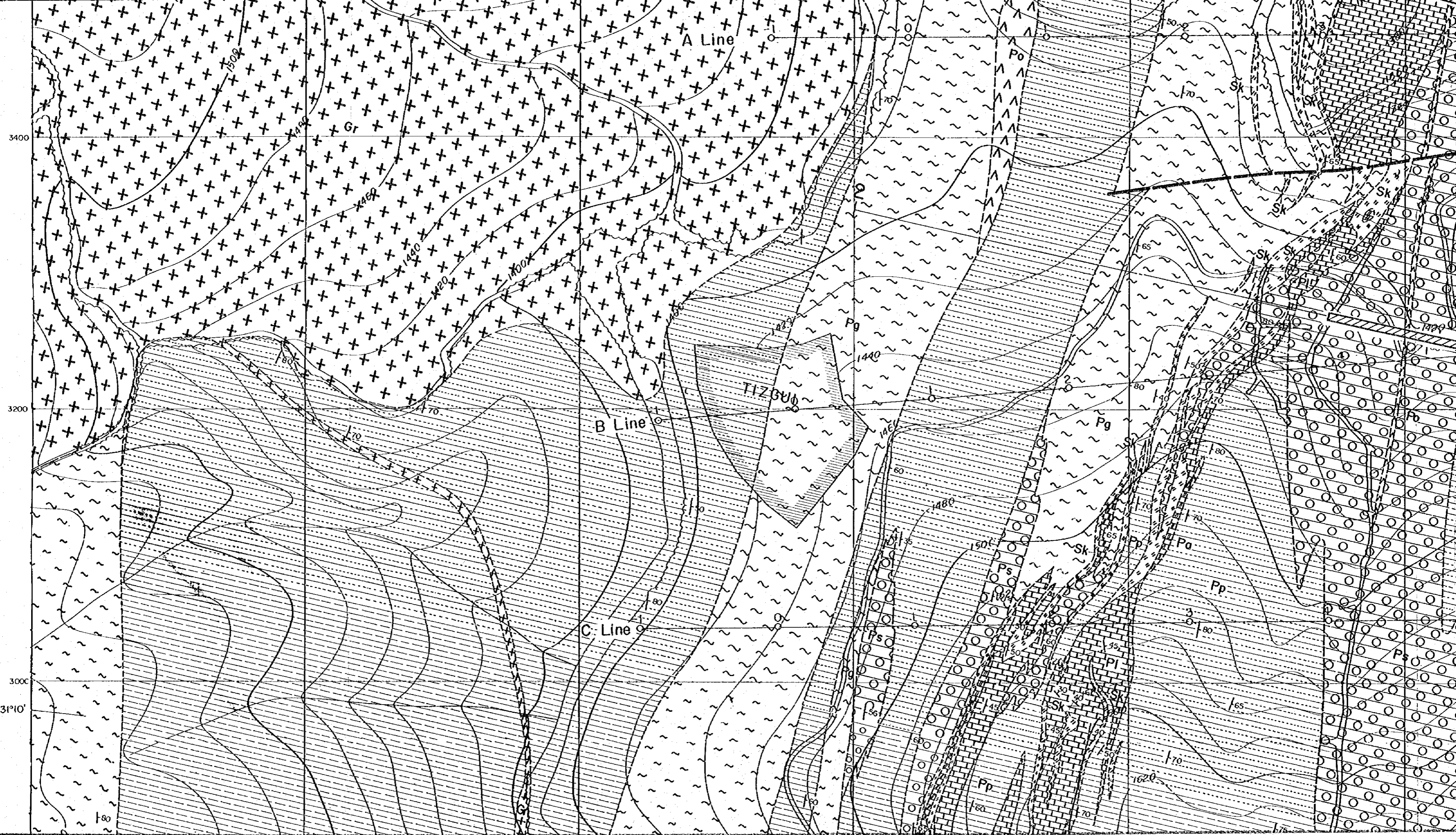
SIP SURVEY AREA WITH SIP LINES
AND DRILL HOLES, AZEGOUR SECTOR

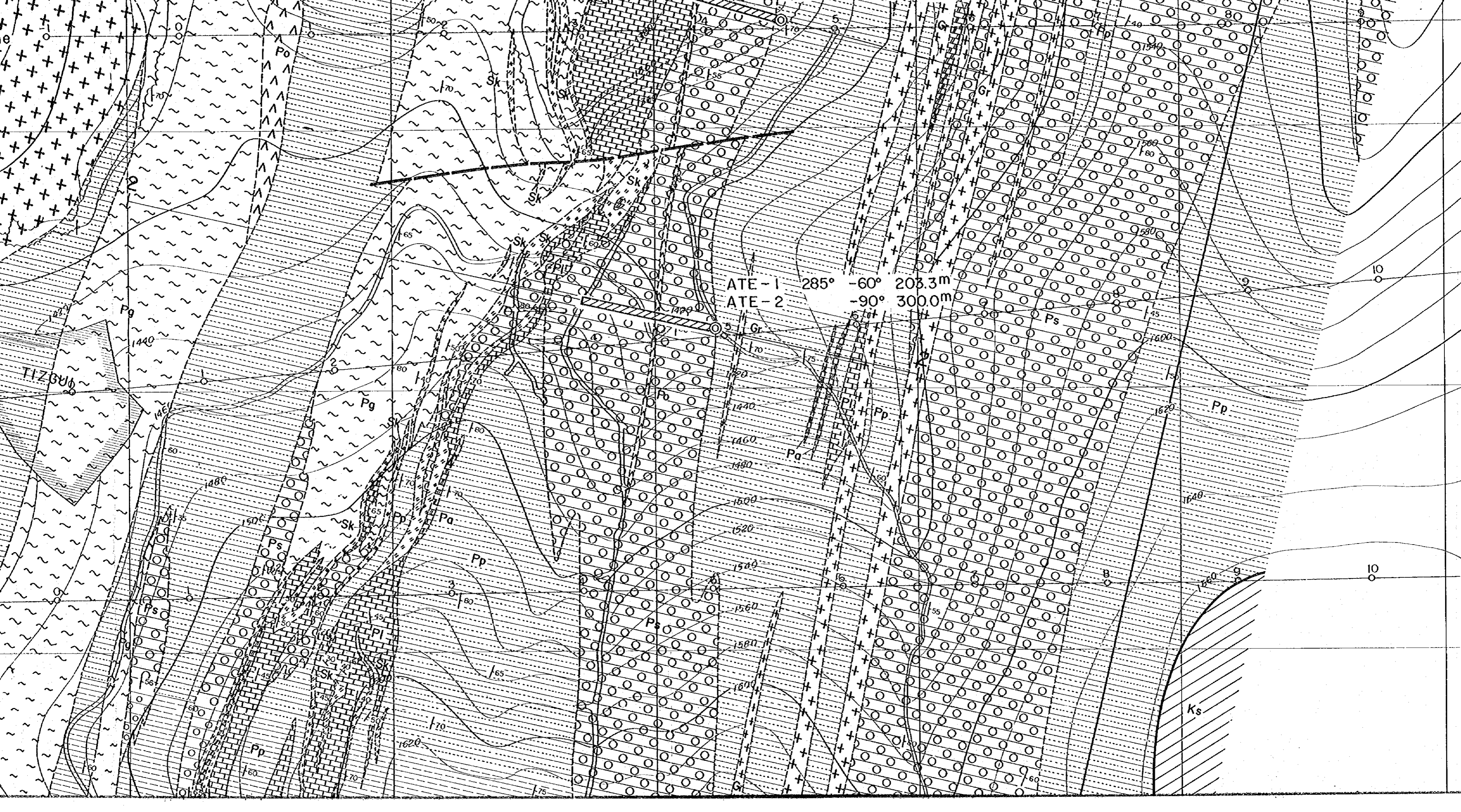


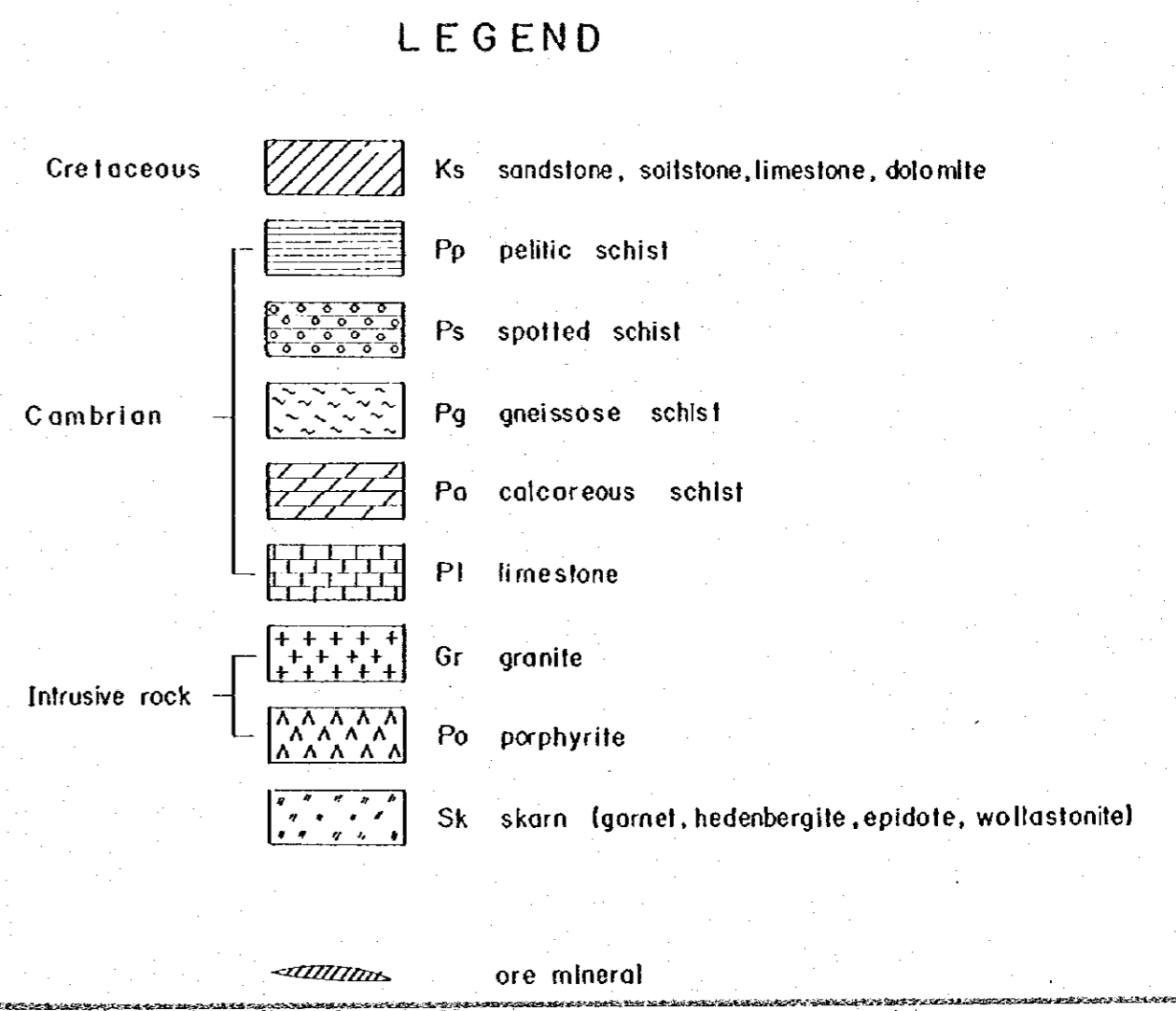
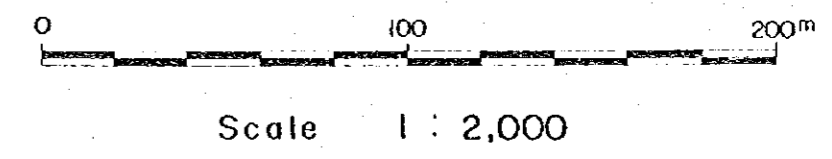
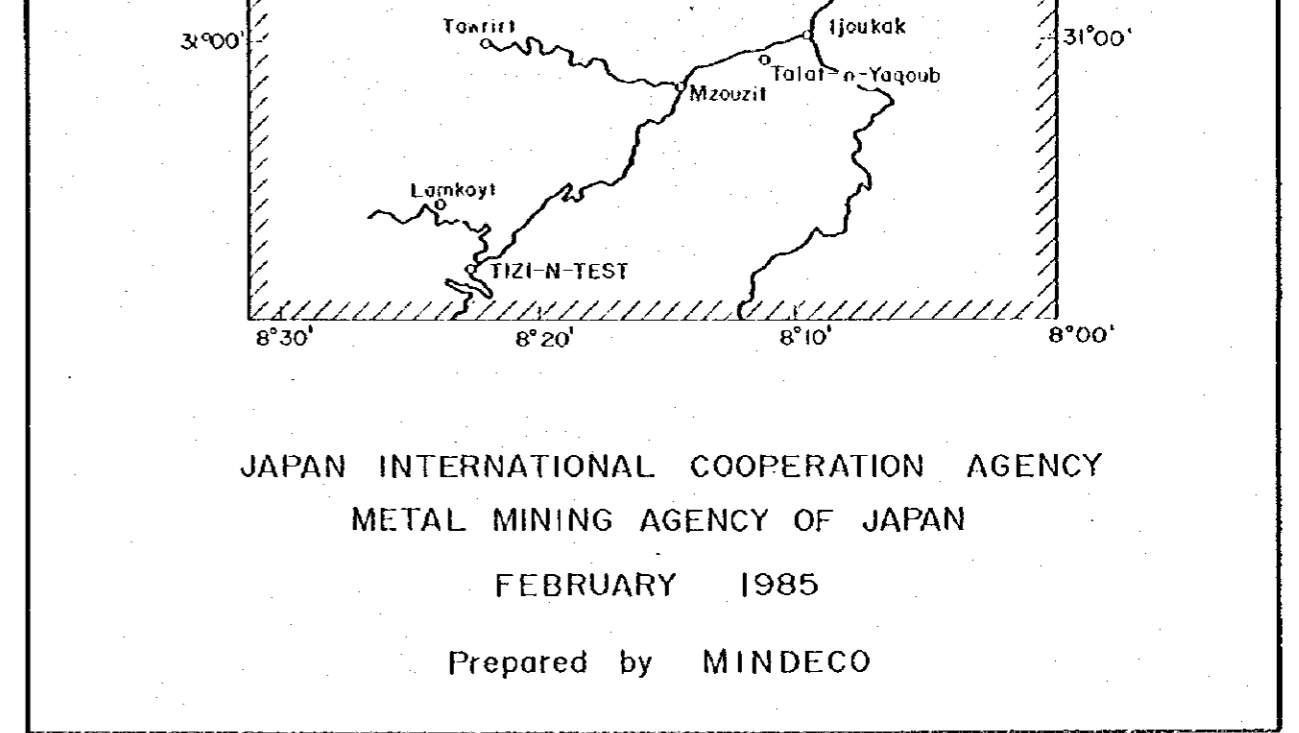
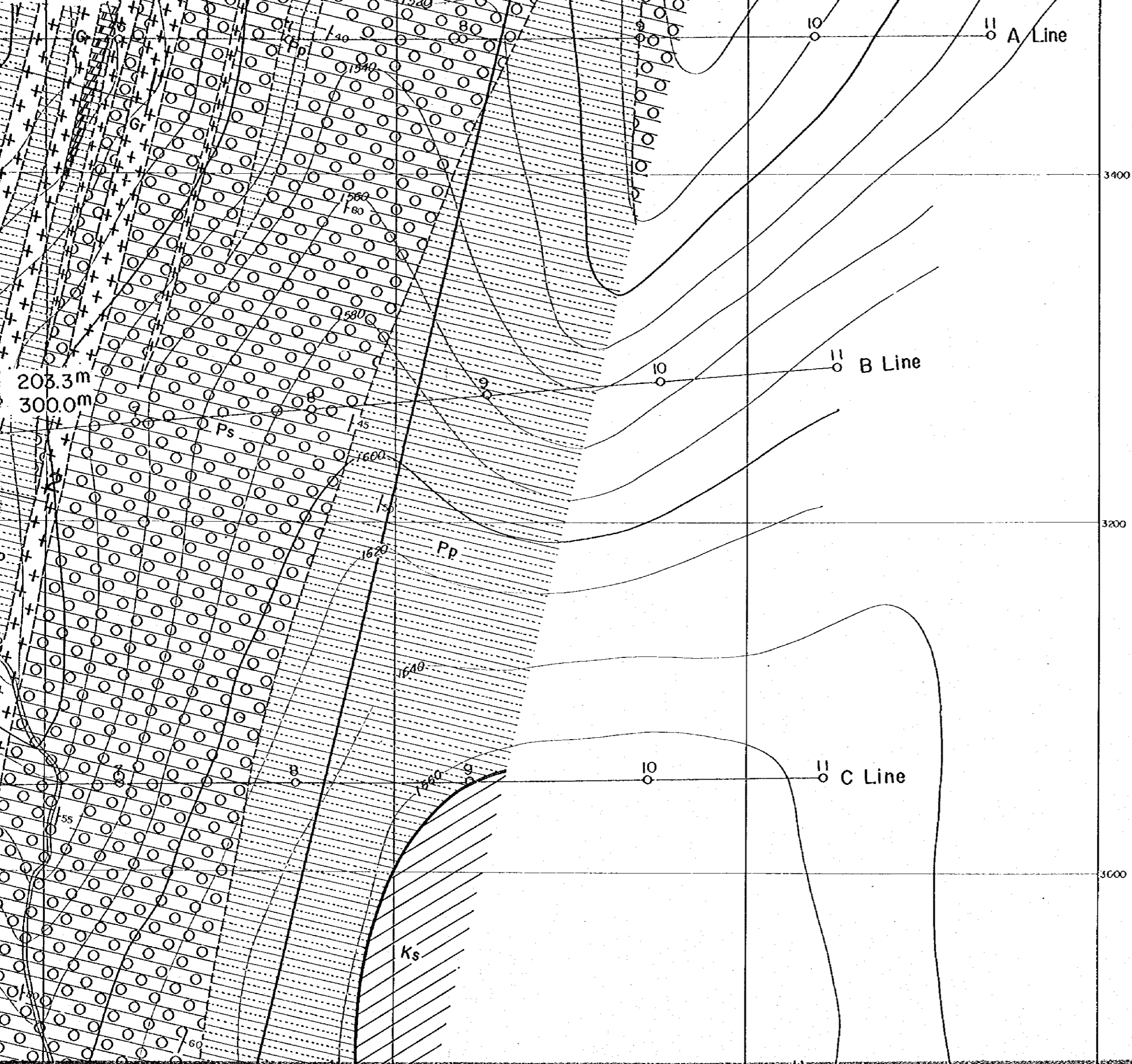
JAPAN INTERNATIONAL COOPERATION AGENCY
METAL MINING AGENCY OF JAPAN
FEBRUARY 1985
Prepared by MINDECO

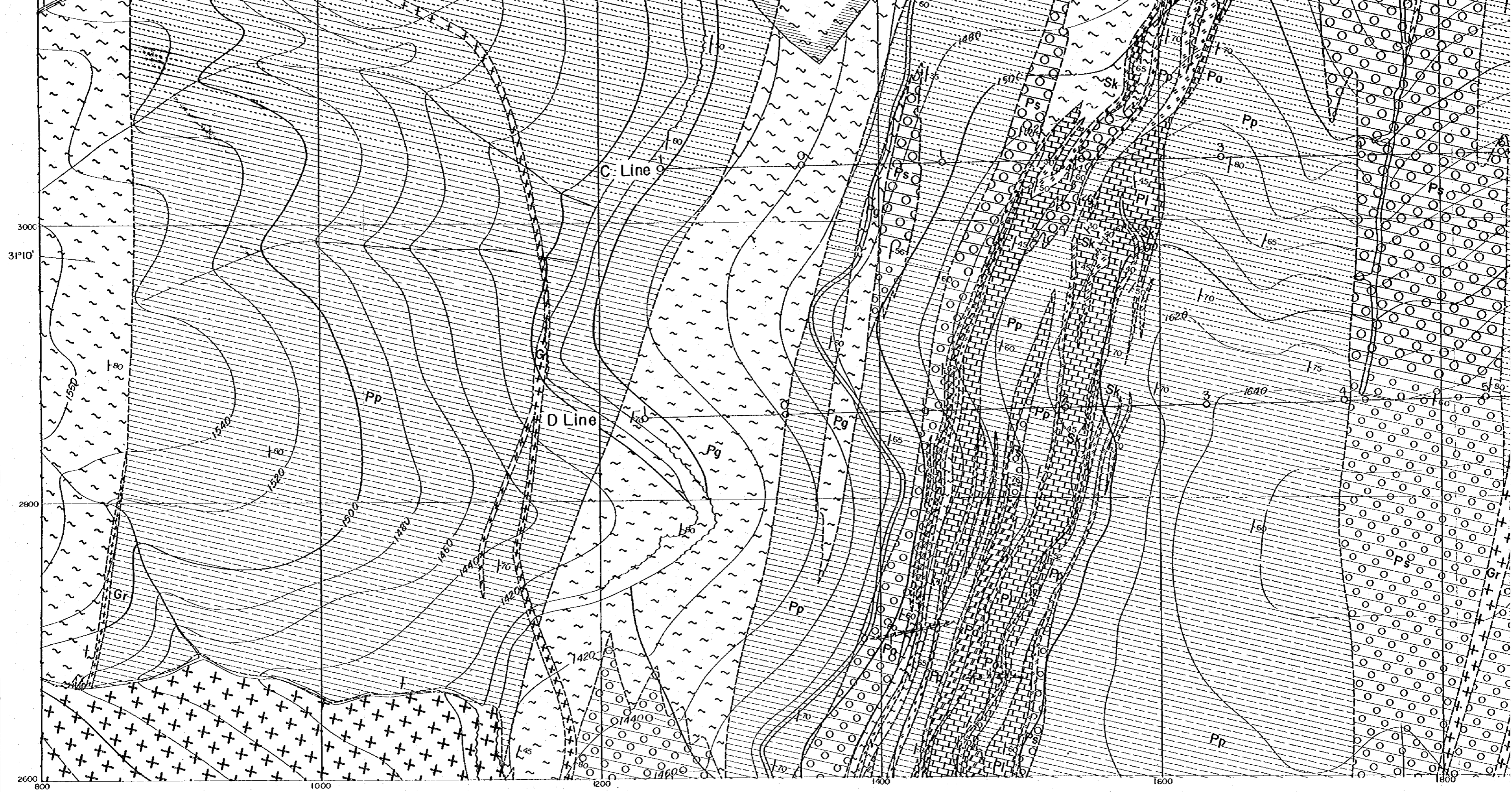


Scale 1 : 2,000











1400

1600

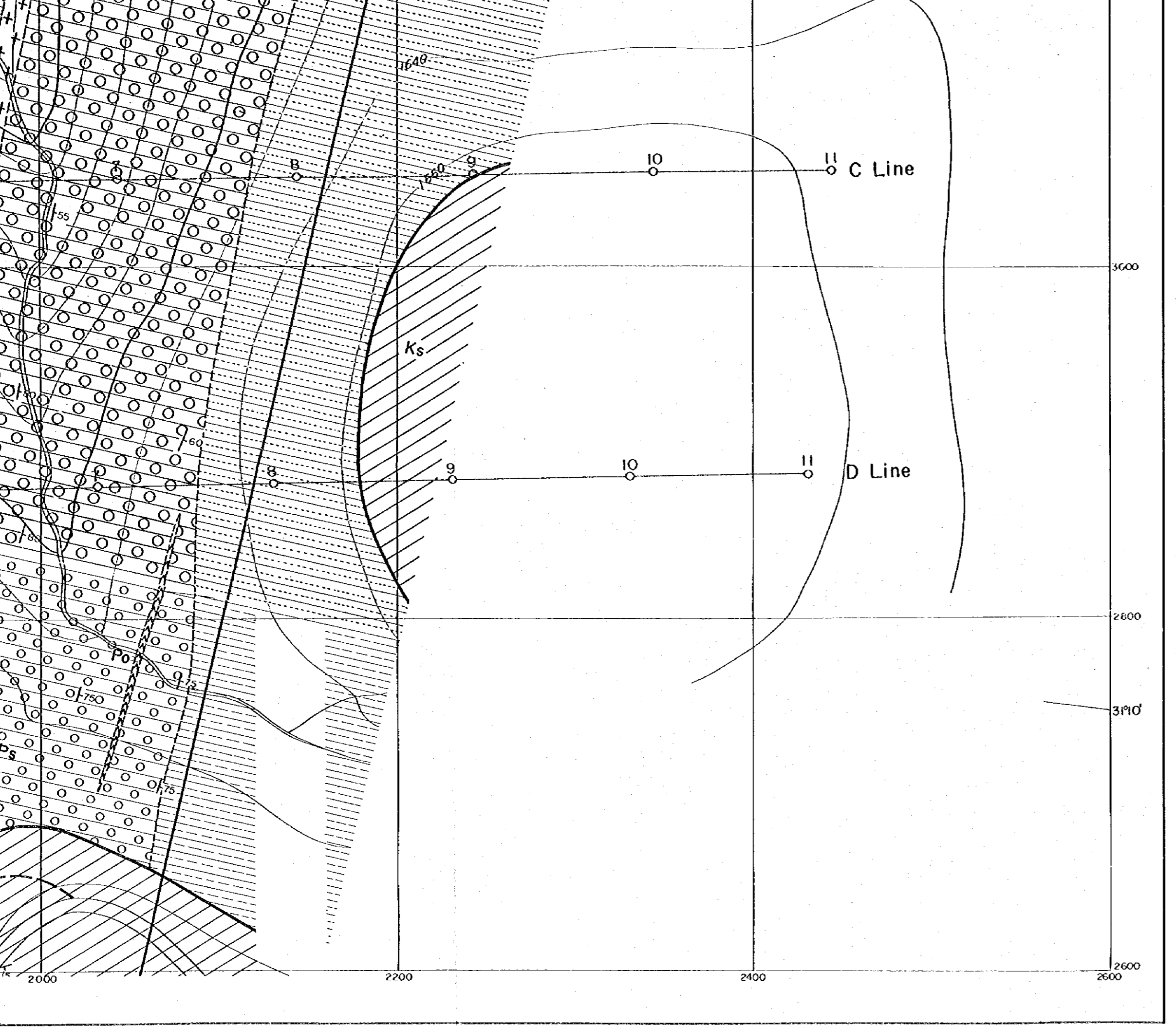
1800

8°17'

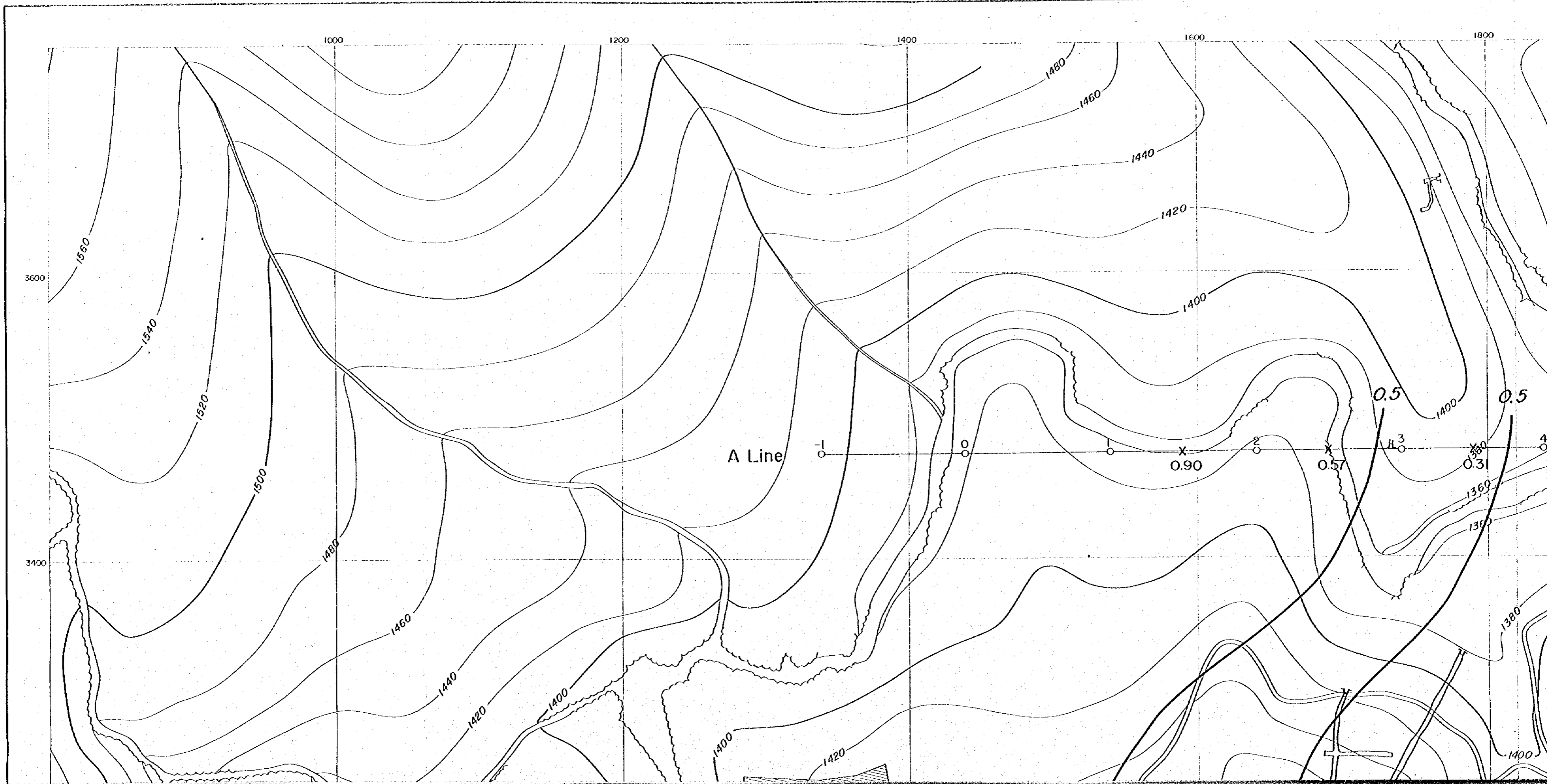
2000

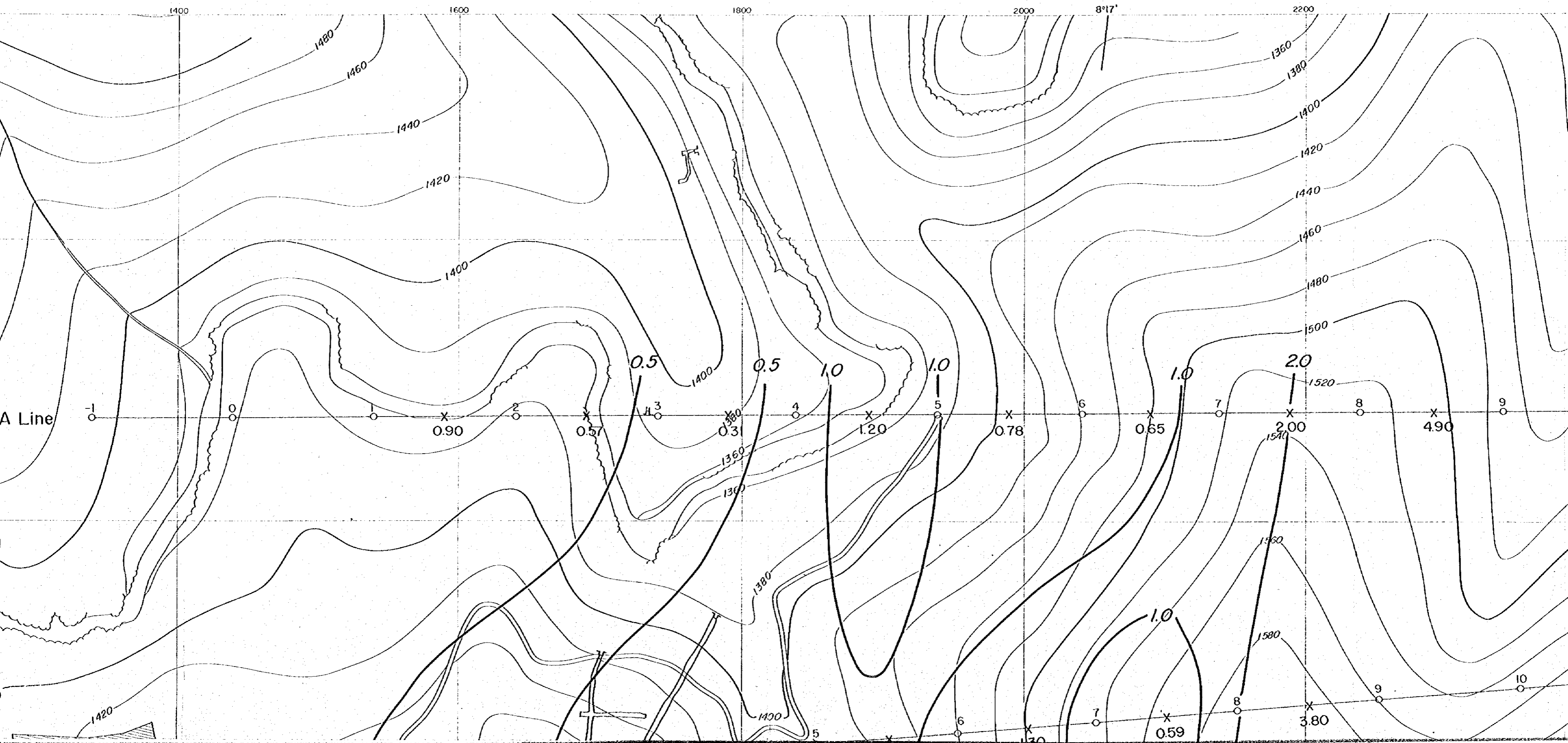
2200

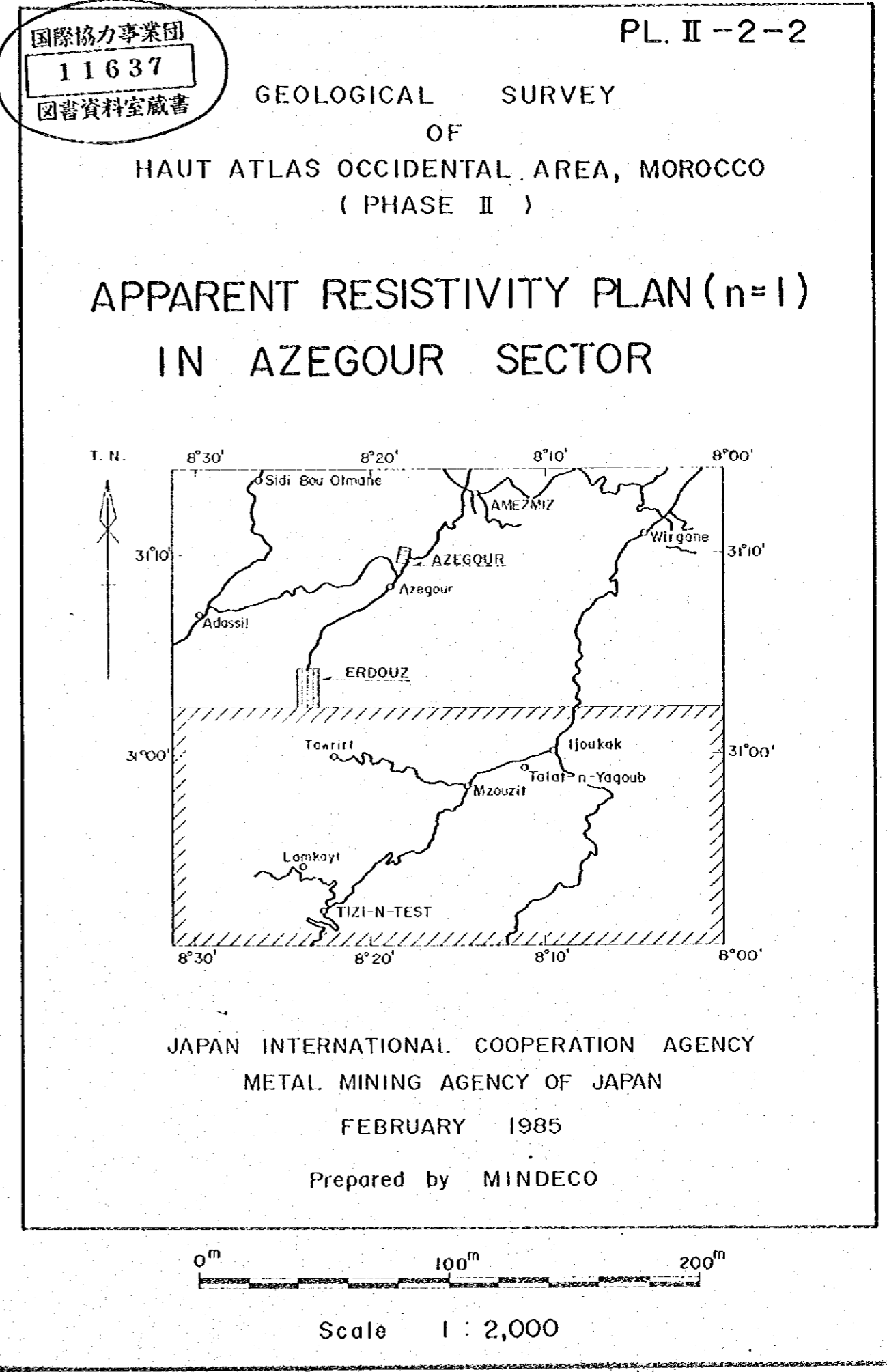
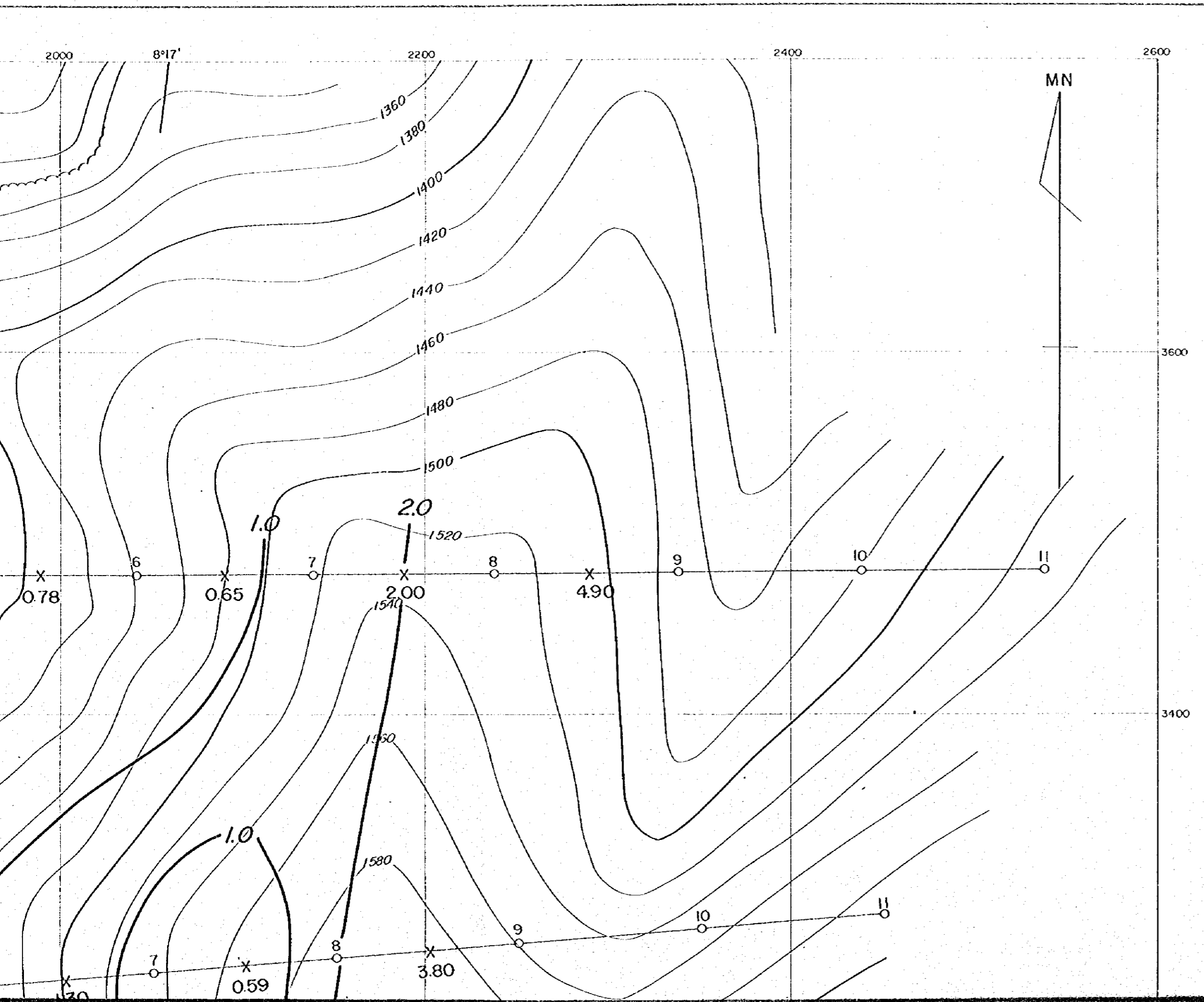
2400



- | | | |
|----------------|--|--------------------------------------------------------|
| Cretaceous | | Ks sandstone, siltstone, limestone, dolomite |
| Cambrian | | Pp pelitic schist |
| | | Ps spotted schist |
| | | Pg gneissose schist |
| | | Pa calcareous schist |
| | | Pl limestone |
| Intrusive rock | | Gr granite |
| | | Po porphyrite |
| | | Sk skarn (garnet, hedenbergite, epidote, wollastonite) |
| | | ore mineral |
| | | fault |
| | | unconformity |
| | | bedding plane |
| | | Survey Line and Station |
| | | Drilling hole |







3400

3200

3000

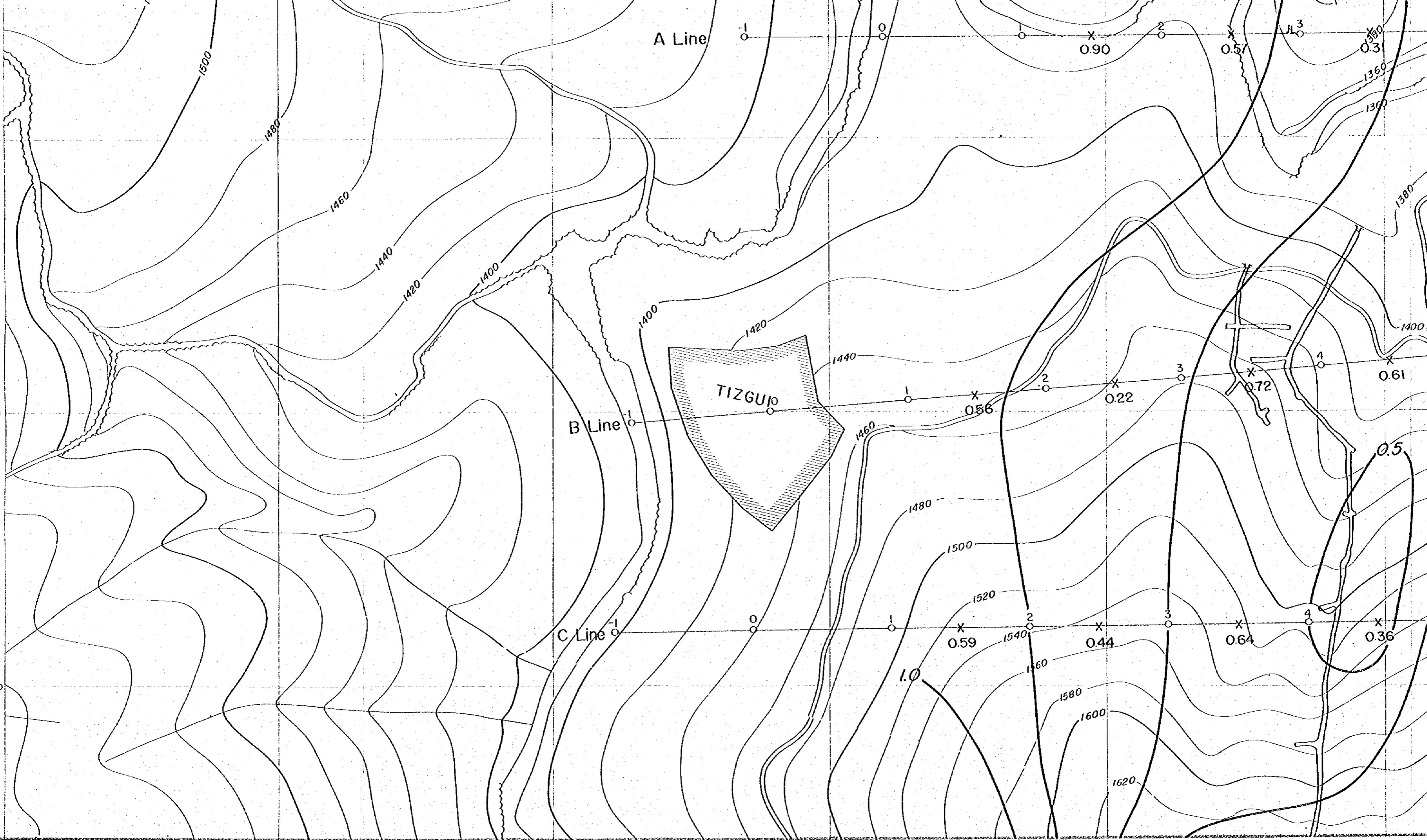
31°10'

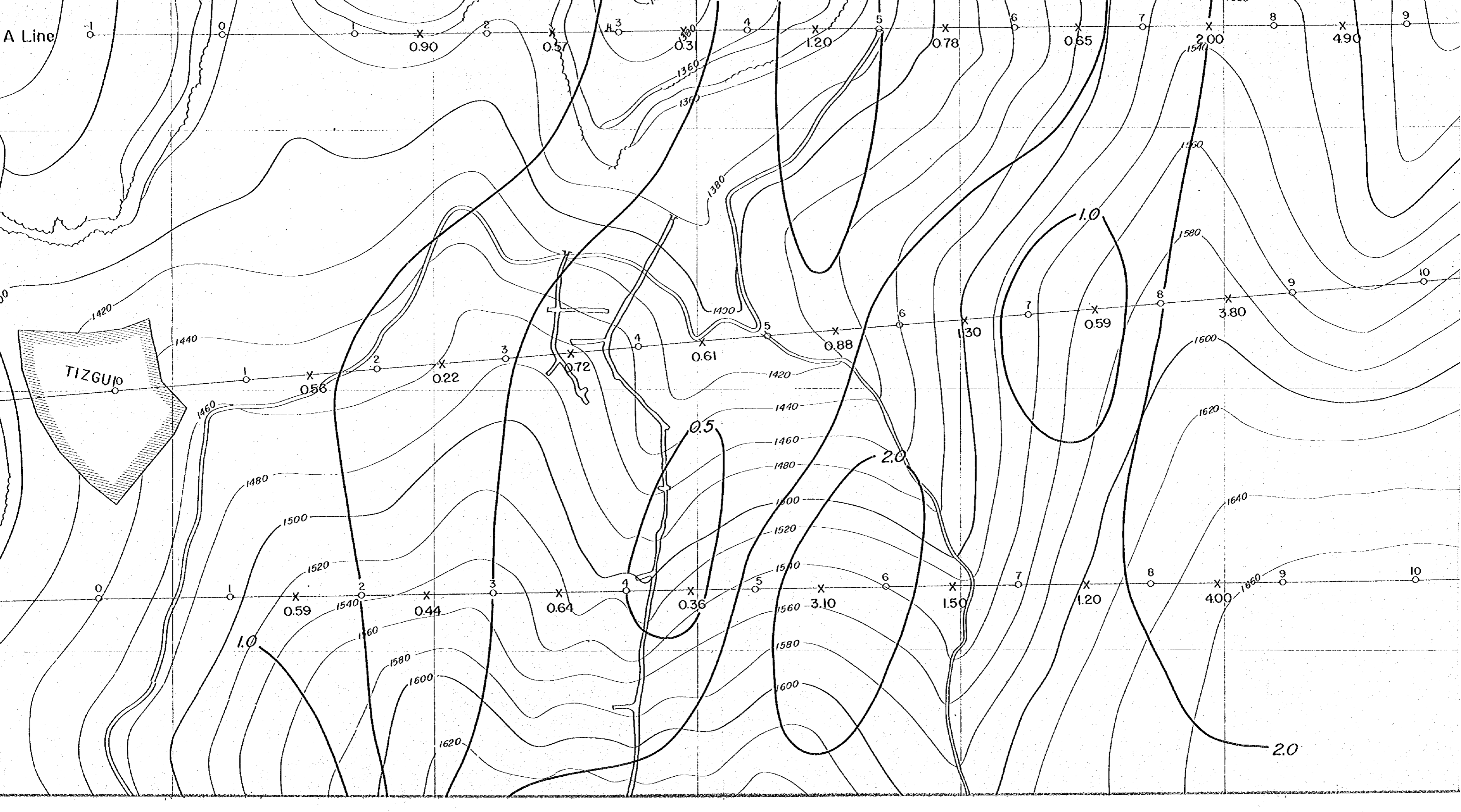
A Line

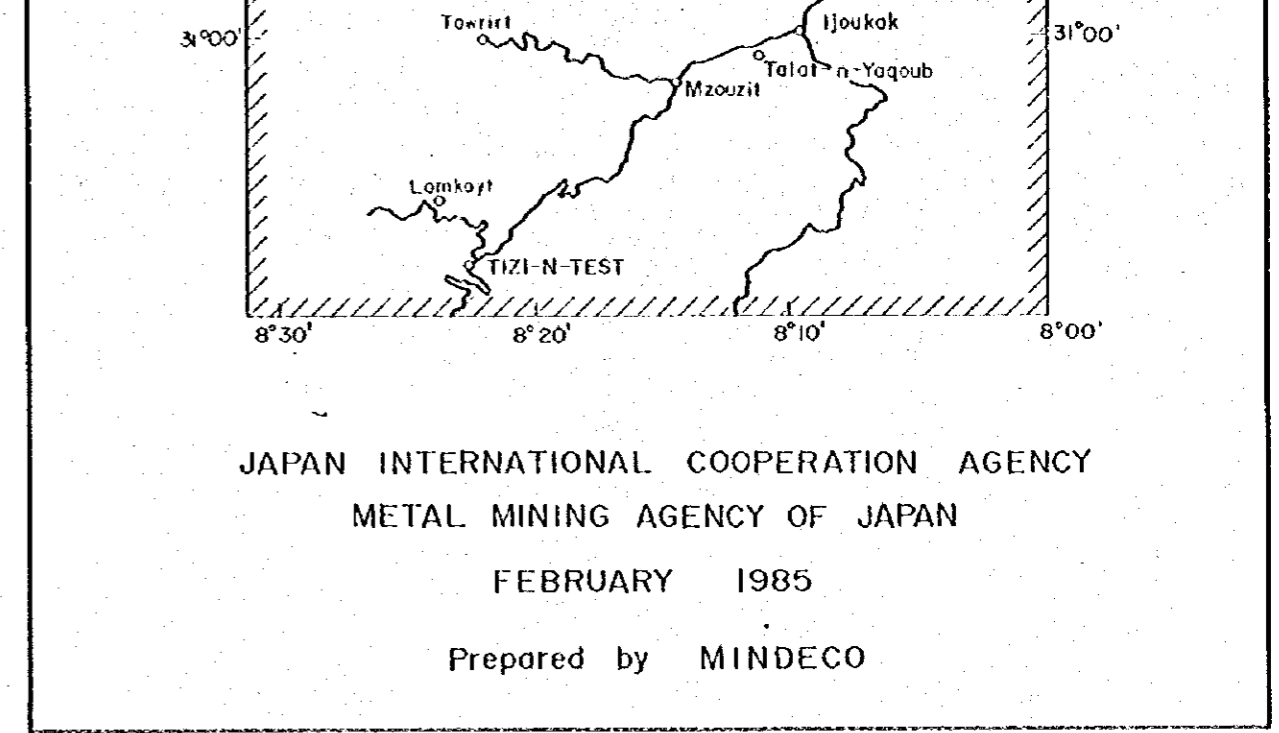
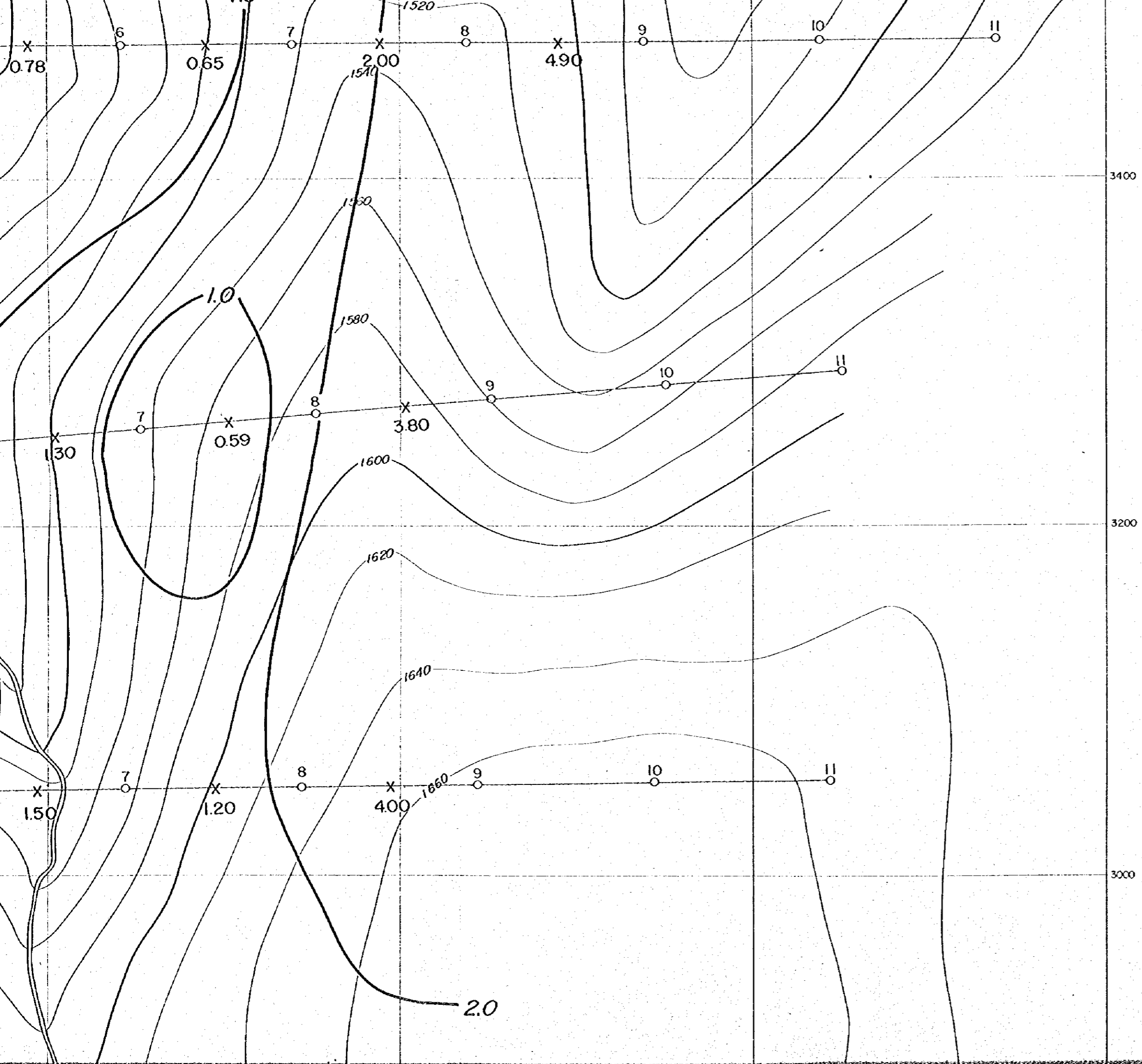
B Line

C Line

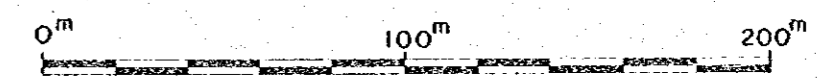
TIZGUP





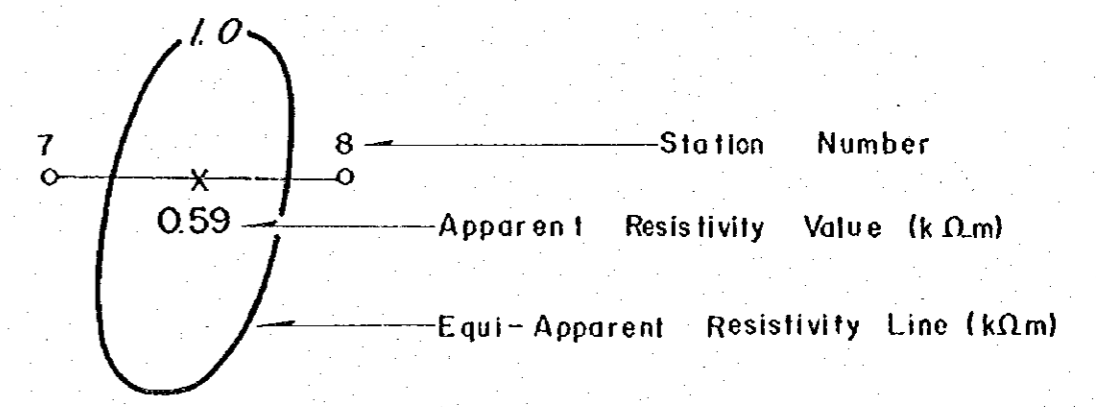


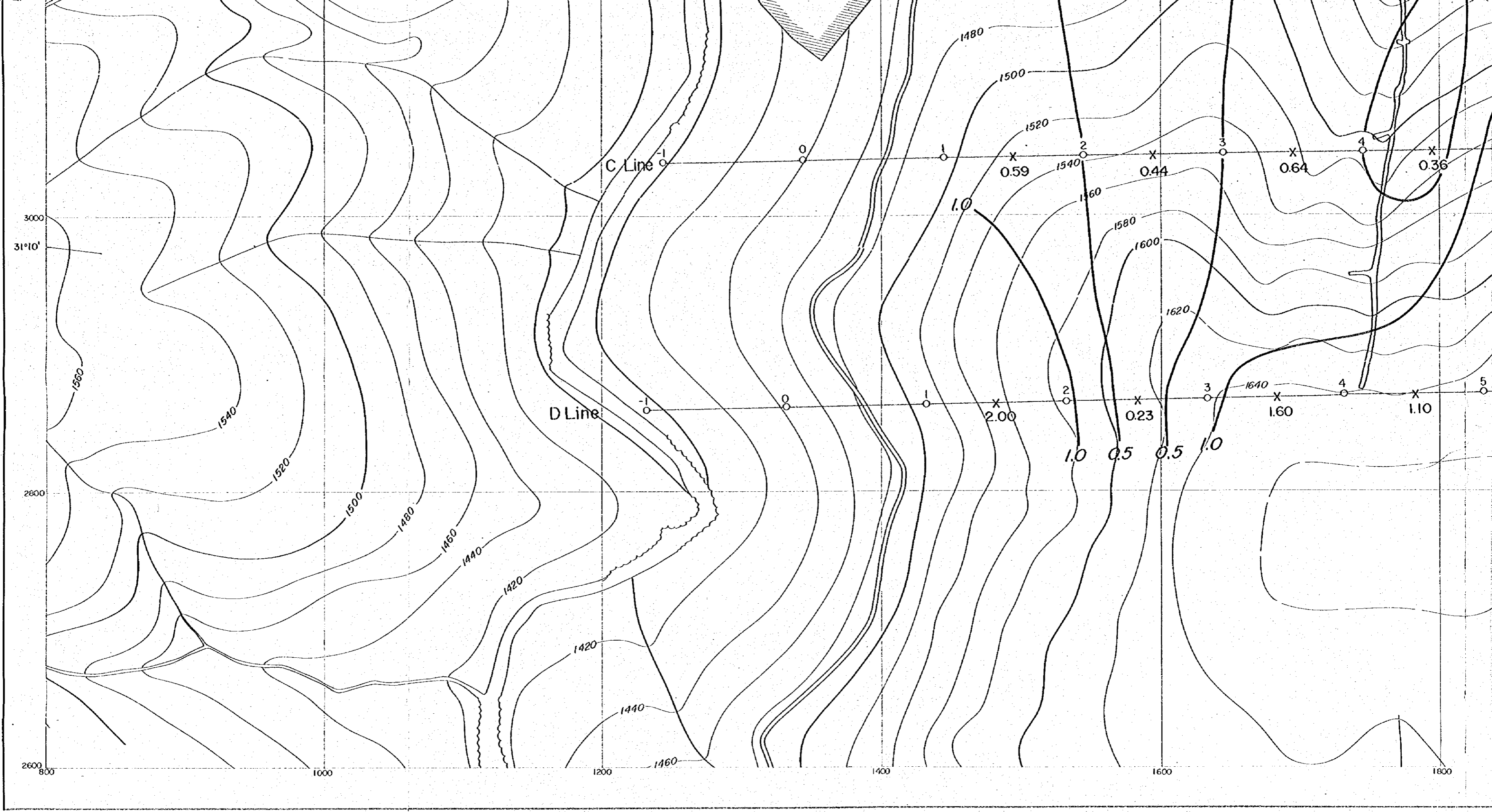
JAPAN INTERNATIONAL COOPERATION AGENCY
 METAL MINING AGENCY OF JAPAN
 FEBRUARY 1985
 Prepared by MINDECO

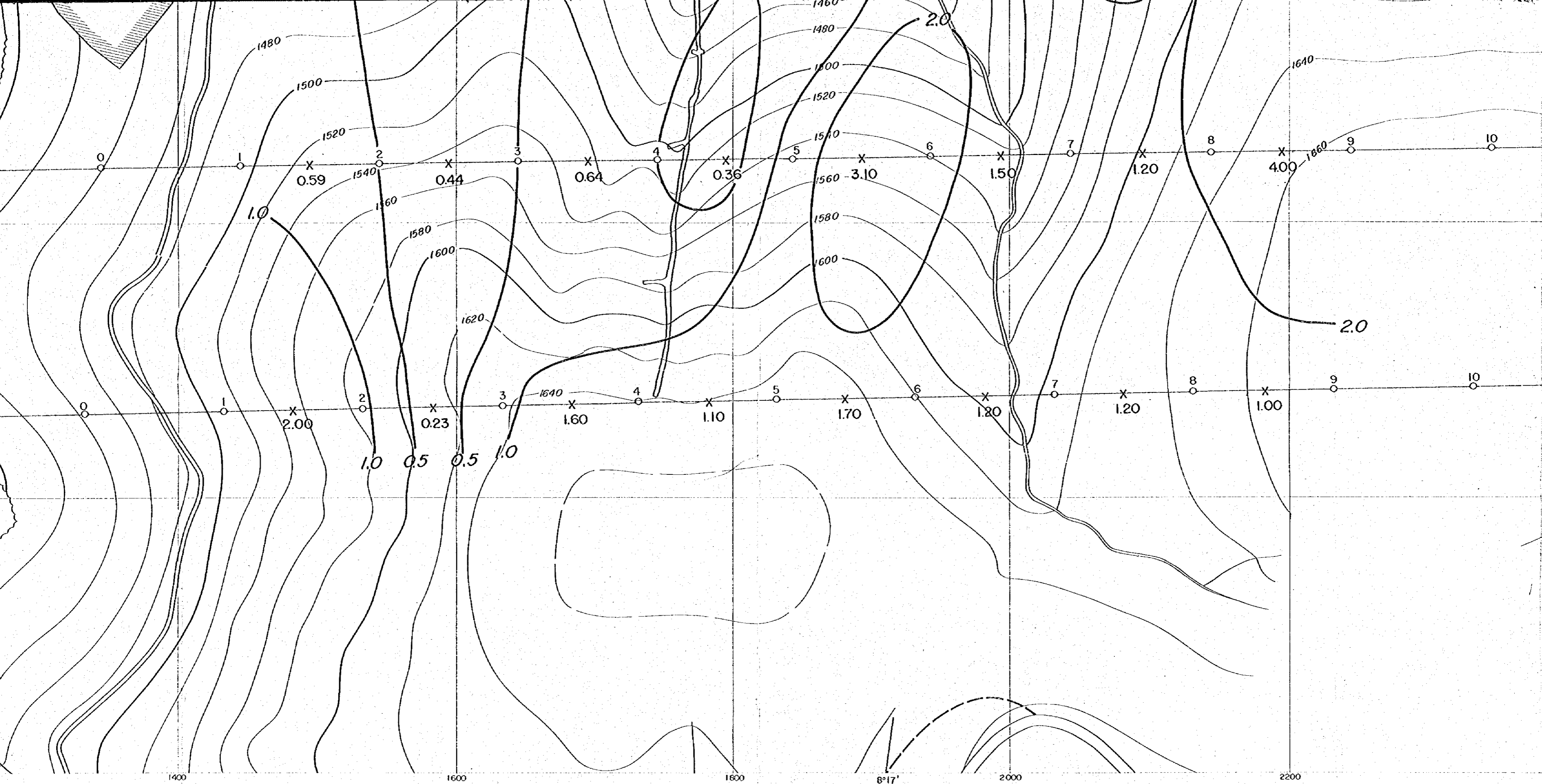


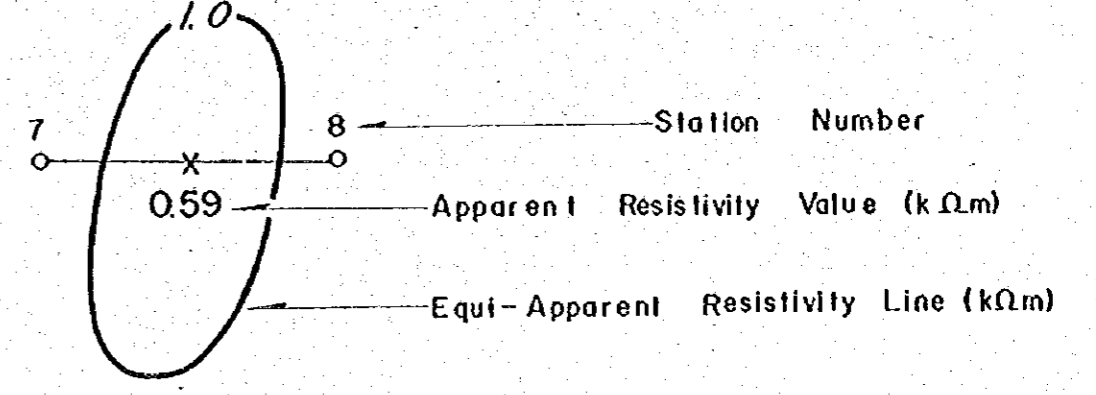
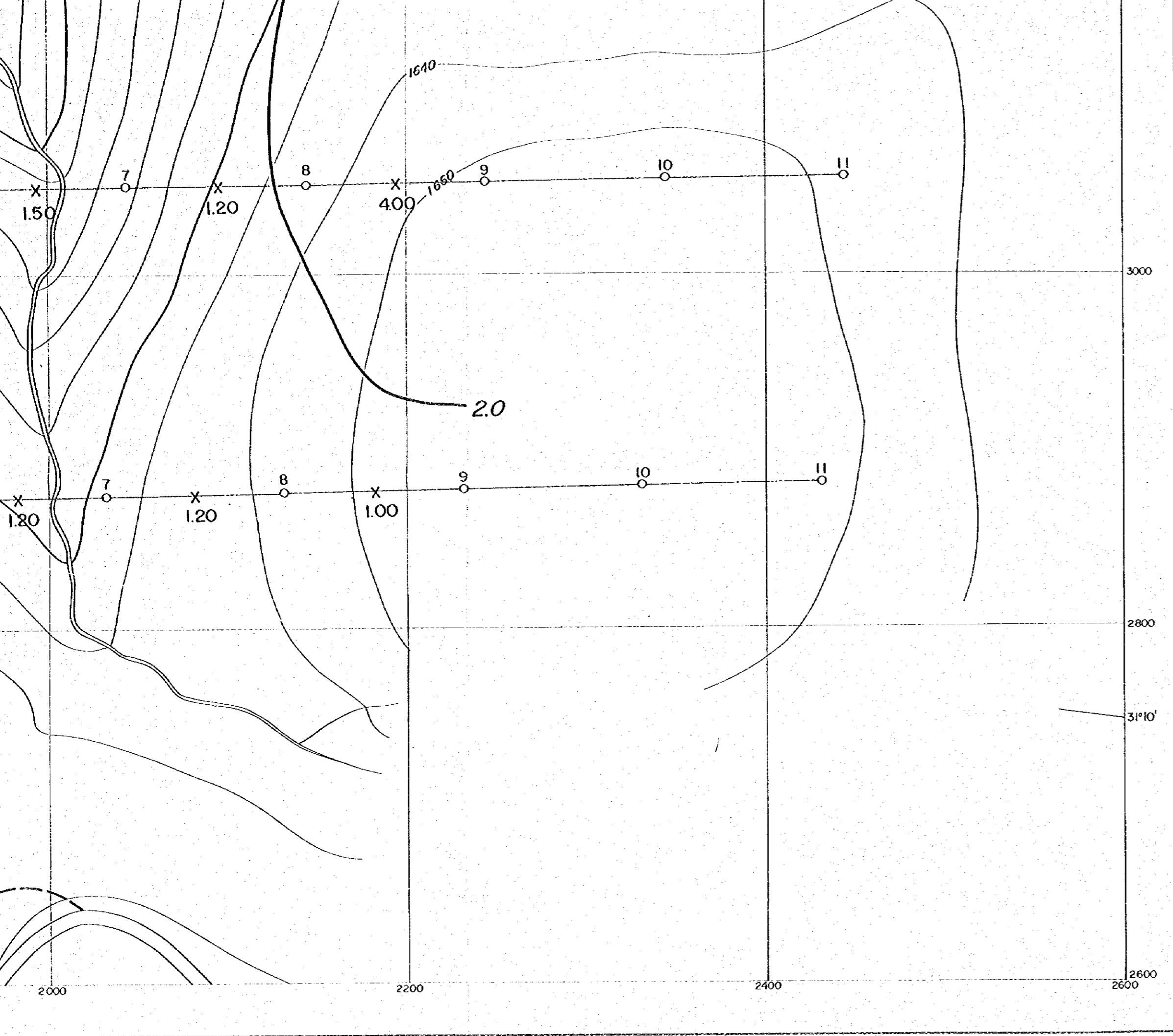
Scale 1 : 2,000

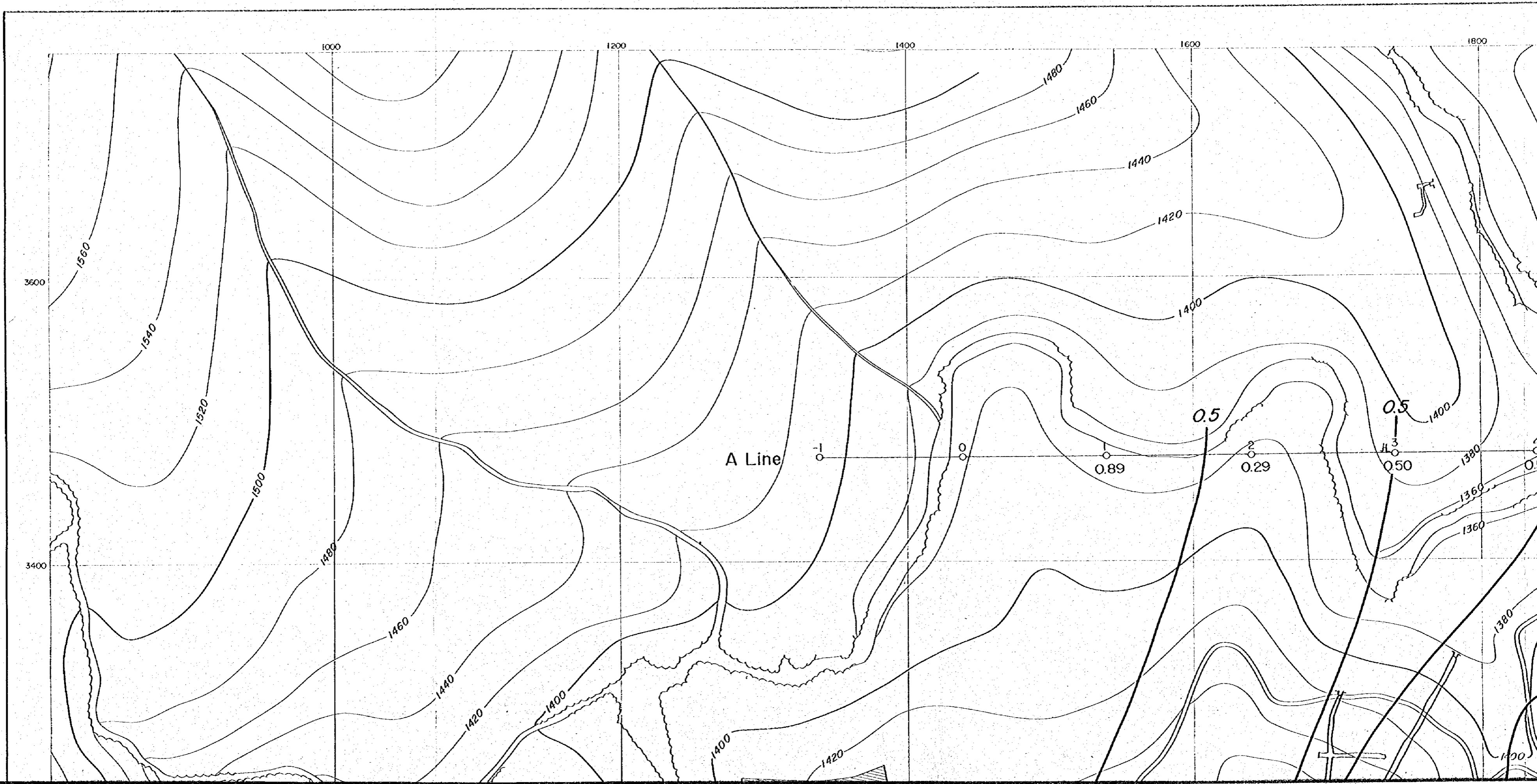
LEGEND

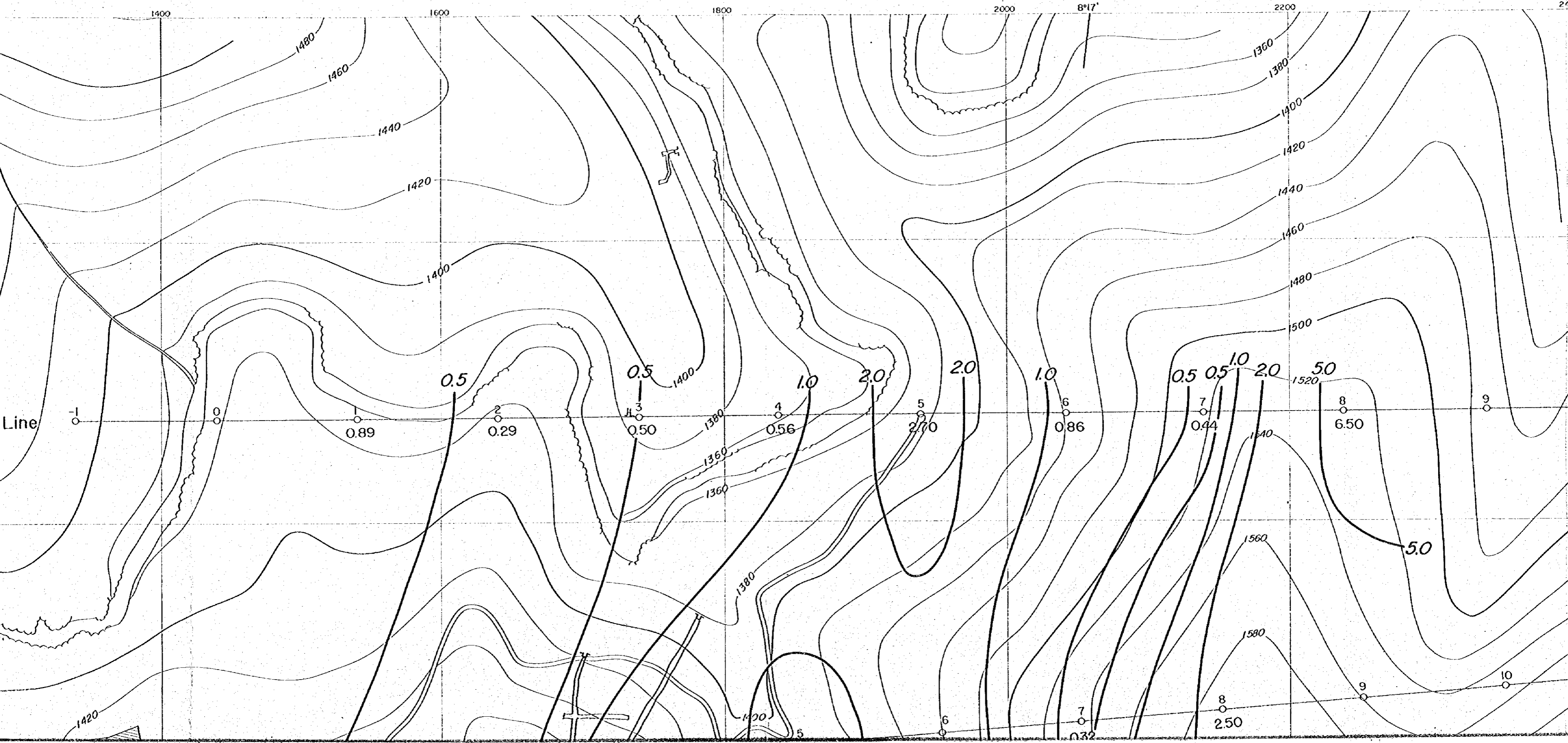


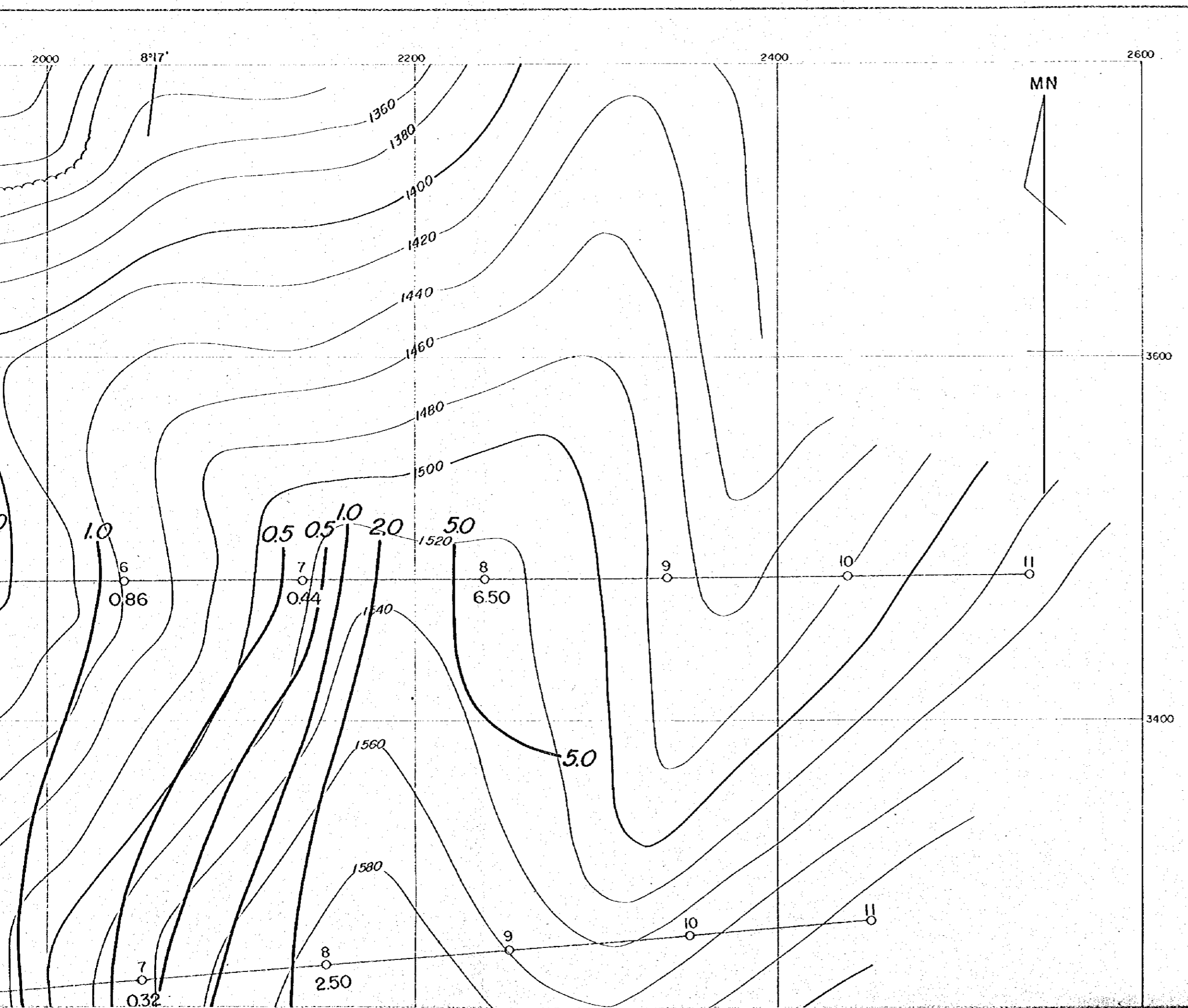












PL. II-2-3

国際協力事業団
 11637
 図書資料室蔵書

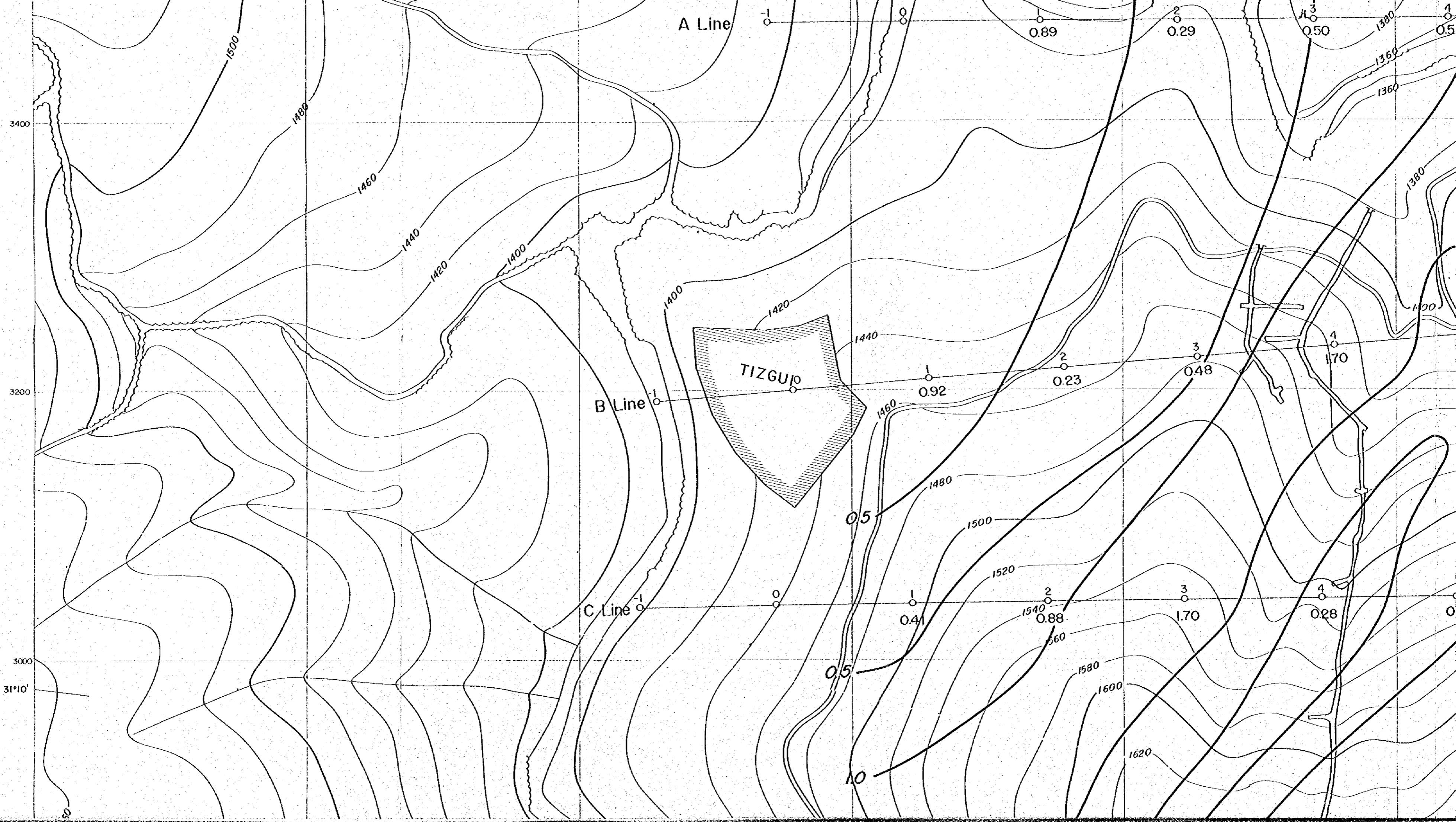
GEOLOGICAL SURVEY
 OF
 HAUT ATLAS OCCIDENTAL AREA, MOROCCO
 (PHASE II)

**APPARENT RESISTIVITY PLAN (n=2)
 IN AZEGOUR SECTOR**

T. N.

Scale 1 : 2,000

JAPAN INTERNATIONAL COOPERATION AGENCY
 METAL MINING AGENCY OF JAPAN
 FEBRUARY 1985
 Prepared by MINDECO



A Line

B Line

C Line

TIZGUP

0.89

0.29

0.50

0.5

0.92

0.23

0.48

1.70

0.41

0.88

1.70

0.28

3400

3200

3000

31°10'